



AvaTax for Communications

SaaS Standard User Manual

Release: 9.20.1812.1
Document: TM_00111_0047
Date: 11/21/2018

Avalara for Communications - Contact Information	
Address	Avalara, Inc. 512 South Mangum Street, Suite 100 Durham, North Carolina, 27701
Email	CommunicationSupport@avalara.com
Help Center	https://help.avalara.com/Avalara for Communications
Toll Free	(877) 780-4848
Corporate Web Site	http://communications.avalara.com/
Communications Customer Portal	https://communications.avalara.net

Document Revision History

The Revision History log lists the date and description of the most recent revisions or versions of the document.

Date	Version	Description
02/15/2016	0024	Avalara branding updates to reflect the transition to the new company and product names have been incorporated into this document. Please see Appendix D – Avalara Product Names for specific changes in product references and descriptions.
03/01/2016	0025	New Section 3.3.4 Handling Optional Files to address handling of optional files which can be embedded and/or persisted such as exclusion, override, exemption and bundle files. New Section 8.2 Specific Exemption File , and new Section 8.8.29 Proration .
04/05/2016	0026	Updates to Section 3.3.4 Handling Optional Files and Section 3.5 Results to include use of Custom Sort utility.
05/05/2016	0027	Updates to Section 3.5 Results related to the ability to view output files in CSV format.
06/13/2016	0028	Updates and new additions throughout Section 8.2 Exemption File to include Category Exemptions and Section 8.8.35 Exemptions by Tax Category . Update to date formats in Section 8.8.7 Specifying Transaction Date .
06/30/2016	0029	Updated NTL filename to match input filename in Section 3.5.2 . Added customsort_log.sta to status files in Section 3.5.3 .
08/09/2016	0030	Updated Section 3.5.2 with audit versions of TSR and RTR reports. Updated Section 8.8.30 Specifying Optional Reporting Fields and added new Section 8.8.30.1 Default Optional Fields and Section 8.8.30.2 Extended Optional Fields .
11/15/2016	0031	Updated Section 2 Naming Files with note regarding maximum allowed length for file name. Updated the title to Section 3.5 Tax Calculation Results to include zip look up results. Updated table in Section 8.1 Input File to include zip look up calculation data. Removed Request Type as a default from the table in Section 8.3 Default Values . Updated description in Section 8.8.12 Specifying Incorporated . Updated Section 8.8.30 Specifying Default Optional Reporting Fields and Section 8.8.31 Specifying Extended Optional Reporting Fields . Added note regarding federal level exemptions to 8.8.34 Specifying Exemption Tax Level . Added Section 8.9 Zip Lookup Requests .
12/05/2016	0032	Updated Section 8.1 Input File to include additional columns for safe harbor overrides for traffic studies functionality. Also, added Section 8.8.37 Specifying Safe Harbor Overrides for Traffic Studies .
02/13/2017	0033	Updated Section 3.3.4 Handling of Optional Files , Section 3.5.2 Report Files and added Section 8.10 Bridge Conference File to support the ability to calculate taxes for conference bridges. All references to 'reverse' tax calculations in AFC SaaS Standard have been updated and renamed to reflect the current naming convention which is 'tax inclusive' calculations. As a result, all request type values in Section 8.1 Input File and 8.8.1 Specifying Request Type have been updated and renamed. Updated Section 8.8.8 Specifying Transaction Charge with details related to support for Excel's currency/numeric format in the charge field/column.

Date	Version	Description
03/09/2017	0034	Added note in Section 8.8.28 Private Line (Point-to-Point) to address support of adjustment calculations with private line feature. Updated Section 8.2.1 Specifying Exemption and Section 8.8.34 Specifying Exemption Tax Type with note regarding availability of wildcard character for tax types. Release number and version updates.
04/24/2017	0035	Added notes to Section 4.1 Uploading the ftp.zip and Section 8.8.24 Specifying Invoice Number . Updates throughout tables in Section 3.5 Tax Calculation Results . Release number and version updates.
05/19/2017	0036	Updated Section 8.8.11 Specifying Sale Type . Release number and version updates.
08/28/2017	0037	Added note related to timestamp/invoice date passed in Section 8.8.7 Specifying Transaction Date . Release number and version updates.
10/25/2017	0038	Updated Avalara contact information (address and support site). Removed Appendix D – Avalara Product Names .
02/23/2018	0039	Updated Section 8.8.10 Specifying Lines to include rounding information for subscription line count values. Updated information throughout Section 8.2.2 Category Exemptions and added Section 8.8.38 Specifying Exemption by Tax Category Scope . Made release number and version updates.
04/25/2018	0040	Updated information throughout Section 8.2.2 Category Exemptions and removed Section 8.8.38 Specifying Exemption by Tax Category Scope . Made release number and version updates.
5/25/2018	0041	Added URL for accessing public resources in sections 1. Introduction and 5. Transaction Mapping Guidelines . Updated table in section 3.5.2 KMLR150117AA.zip - Report Files . Updated values in several tables throughout section 8.8 Transaction Specifications . Added error codes -41 through -48 in section 10. Appendix B – AFC Error Codes . Made release number and version updates.
6/25/2018	0042	Made release number and version updates.
7/25/2018	0043	Made release number and version updates.
8/24/2018	0044	Updated section 8.2 Exemption File . Made release number and version updates.
9/25/2018	0045	Updated Avalara contact information. Made release number and version updates.
10/25/2018	0046	Made release number and version updates.
11/21/2018	0047	Made release number and version updates.

Table of Contents

1.	Introduction	1
2.	Naming Files	1
2.1	Compliance Month.....	2
3.	AFC FTP Site.....	2
3.1	Accessing the FTP Site	2
3.2	Logging on to the FTP Site.....	2
3.3	Submitting a Request.....	3
3.3.1	Primary File – Transaction Batch Data	3
3.3.2	Extended Format – Excel, CSV.....	4
3.3.3	Fixed Format – CDF.....	4
3.3.4	Handling of Optional Files	4
3.4	Transferring Files To and From the FTP Site.....	6
3.5	Tax Calculation Results	7
3.5.1	KMLS150117AA.zip - Compliance Files	7
3.5.2	KMLR150117AA.zip - Report Files.....	7
3.5.3	KMLE150117AA.zip - Status Files.....	8
4.	Web Interface.....	9
4.1	Uploading the ftp.zip	10
4.2	Retrieving Files	12
4.3	Notifications.....	13
5.	Transaction Mapping Guidelines.....	13
6.	Frequently Asked Questions.....	14
7.	Support	14
8.	Appendix A – Extended Format: Excel and CSV.....	15
8.1	Input File.....	15
8.2	Exemption File.....	18
8.2.1	Exemption File Updates	18
8.2.2	Overview of Exemptions	19
8.2.3	Exemption Fields.....	20
8.3	Transaction Default Values	23

8.4	Transaction File Sample	24
8.5	Default File Sample.....	24
8.6	Specifying a Tax Jurisdiction.....	24
8.6.1	Jurisdiction Hierarchy.....	25
8.6.2	Jurisdiction Data Types.....	25
8.6.3	Jurisdiction Data Type Hierarchy	26
8.7	Getting the Right Tax Jurisdiction for Local Taxation.....	27
8.8	Transaction Specifications.....	27
8.8.1	Specifying Request Type.....	27
8.8.2	Specifying Jurisdiction PCode	28
8.8.3	Specifying Jurisdiction Address.....	28
8.8.4	Specifying Jurisdiction FIPS Code.....	29
8.8.5	Specifying Jurisdiction NPANXX	30
8.8.6	Specifying Transaction / Service Pair.....	30
8.8.7	Specifying Transaction Date	31
8.8.8	Specifying Transaction Charge.....	31
8.8.9	Specifying Customer Type	32
8.8.10	Specifying Lines.....	32
8.8.11	Specifying Sale Type.....	32
8.8.12	Specifying Incorporated	32
8.8.13	Specifying Level Exemptions.....	33
8.8.14	Specifying the Regulated Flag.....	33
8.8.15	Specifying Minutes.....	33
8.8.16	Specifying Debit Flag.....	34
8.8.17	Specifying Service Class.....	34
8.8.18	Specifying Lifeline Flag	34
8.8.19	Specifying Facilities Flag	35
8.8.20	Specifying Franchise Flag.....	35
8.8.21	Specifying Business Class.....	35
8.8.22	Specifying Company Identifier	35
8.8.23	Specifying Customer Number.....	36

8.8.24	Specifying Invoice Number.....	36
8.8.25	Specifying Discount Type.....	36
8.8.26	Specifying Exemption Type.....	37
8.8.27	Specifying Adjustment Method.....	38
8.8.28	Specifying Private Line (Point-to-Point).....	38
8.8.29	Specifying Proration.....	39
8.8.30	Specifying Default Optional Reporting Fields.....	39
8.8.31	Specifying Extended Optional Reporting Fields.....	39
8.8.32	Specifying Exemption Cross Reference Key.....	41
8.8.33	Specifying Exemption Jurisdiction.....	41
8.8.34	Specifying Exemption Domain.....	42
8.8.35	Specifying Exemption Scope.....	42
8.8.36	Specifying Exemption Tax Level (Deprecated – Use Domain instead).....	43
8.8.37	Specifying Exemption Category.....	43
8.8.38	Specifying Exemption Exempt Non-billable Flag.....	44
8.8.39	Specifying Exemption Exempt Non-level-exemptible Flag.....	44
8.8.40	Specifying Safe Harbor Overrides for Traffic Studies.....	44
8.9	Zip Lookup Requests.....	46
8.9.1	Zip Lookup Input File.....	46
8.9.2	Zip Lookup Results.....	47
8.9.3	Zip Lookup Specific Transaction Specifications.....	47
8.10	Bridge Conference File.....	49
9.	Appendix A – Fixed Format: CDF.....	50
10.	Appendix B – AFC Error Codes.....	52

1. Introduction

AvaTax for Communications (AFC) SaaS Standard is a tax-rating service bureau. It provides the necessary link to allow you to transfer files to and from Avalara for processing by the AFC server. AFC SaaS Standard provides two ways to connect to the AFC server - by using a file-transfer protocol (FTP) connection through an existing account and typing 'ftp.billsoft.com' at the prompt within the FTP session or by connecting to the web interface at <https://ftp.billsoft.com>.

For sample files and ftp scripts, see the **samples** folder and other resources at this URL: https://github.com/Avalara/Communications-Developer-Content/tree/master/afc_saasstd_tax.

Once your file has been uploaded to the server, AFC begins immediate processing of your data. AFC SaaS Standard and the AFC server are online - 24 hours a day, 7 days a week - to process your data.

2. Naming Files

Uploaded files MUST be named using the following naming conventions for the base name of the file.

KML150117AA.{ext}

- KML: 3 letter company code
- 15: Year the file is to be uploaded
- 01: Month in which you are processing
- 17: The day of the month the file was created
- AA: Unique identifier that allows for better tracking and maintaining of these files
- T: Special Designator indicating the file is a test run and should not be included in compliance filing. This is not required but is a good practice as it allows production reports and test reports to be distinguished.

Note: In addition to the naming convention guidelines, please be aware that the maximum allowed length for a file name is 19 bytes.

The following formats / extensions are supported:

- Extended Formats
 - Excel .xls,.xlsx
 - Comma-Separated .csv ABC151116AA.CSV
- Fixed Format
 - Customer Detail File .cdf

When uploading your file to the online ftp site (see [Uploading the ftp.zip](#)), it must be compressed (i.e., "zipped") into a file named ftp.zip in order to be processed automatically.

2.1 Compliance Month

The filename is generally the best approach for identifying which tax month the request applies to. If the billing cycle is for October 2015, then the name ABC1510NN would allow multiple submissions to be aggregated together for compliance filing.

General Rules:

- Do not mix transactions from different billing cycles in the same request.
- Designate test data by adding a T to the filename. For example, if ABC1510NN is the normal designation, use ABC1510NNT for testing.

3. AFC FTP Site

3.1 Accessing the FTP Site

AFC SaaS Standard provides two ways to connect to the AFC FTP server - by using a secure file-transfer protocol (SFTP) or file-transfer protocol (FTP) connection through an existing account and typing 'ftp.billsoft.com' at the prompt within the FTP session or by connecting to the web interface at <https://ftp.billsoft.com>.

Note Concerning FTP Client Software

Please be aware that web browsers (Microsoft Internet Explorer, Firefox, etc.) cannot be used for uploading and downloading files via FTP to the AFC FTP site. A FTP client application must be used to transfer files to and from the AFC FTP site when using our service as FTP.

Windows users:

Microsoft does not currently include convenient FTP client software in its operating systems. It is assumed you either own a third-party FTP client application such as WS_FTP (a shareware version of which can be downloaded from <http://www.ipswitch.com>), or that you are comfortable accessing FTP sites using command-line syntax.

Linux users:

If using a Linux system to transfer your call-data files, you can use any number of free FTP clients to contact the AFC FTP site, such as WXFtp, or you can use command-line syntax.

3.2 Logging on to the FTP Site

To log on to the AFC FTP site, you will need the following information:

HOSTNAME/ADDRESS: 'ftp.billsoft.com' within a FTP session or via the web at <https://ftp.billsoft.com>

USER ID: Your User ID is created and provided to you. Please refer to the **Welcome to Avalara** email or contact communicationsupport@avalara.com for your organization's assigned User ID.

PASSWORD: Your organization's login password is also provided by your Avalara technical support contact. For future reference, you may make note of your login details in spaced provided below.

User ID: _____

Password: _____

Company Code: _____

3.3 Submitting a Request

A single ftp.zip file will be submitted containing one and only one primary file and one or more optional files.

General Submission Rules

- Files submitted must be at the root-level within the zip file and cannot contain any other folders.
- The data must be compressed before you upload it for processing. The AFC FTP server uses *PK-Zip/PK-Unzip* version 2.04 for compressing and decompressing files. If you prefer using a Windows-based compression utility, you can use a product such as *WinZip*, which is compatible with the version 2.04 of *PK-Zip/PK-Unzip*.
- An account can only process a single request at a time. If additional requests are received before the first request has been completed, they will be rejected.

3.3.1 Primary File – Transaction Batch Data

The primary file contains all transactions to be processed and can be either **Fixed Format** (.cdf) or **Extended Format** (.csv/Excel). The naming convention for the primary file must be named correctly and uniquely. Submitting the same file name will cause the file to be rejected.

- The 1st through the 3rd characters in the filename should begin with your company's three-letter code.
- The 4th and 5th characters in the filename should be the current year (2-digits).
- The 6th and 7th characters are the current month.
- The 8th and 9th characters are the current day.
- The 10th through the 13th characters are your unique files identifiers. Please note that 'T' is reserved for test files.
- The final character must be 'T' if this a test file. (optional or preferred)
- The file extension must be a supported extension.

Thus, an example of a correctly named file is *KML150117AA.CSV*, where *KML* is the three-letter code for the company, *15* is the year, *01* is the month and *17 is the day*. *AA* indicates it is the first file uploaded that day, and *.CSV* indicates it is a comma delimited file for processing by AFC. Refer to the [Compliance Month](#) section for additional details on compliance processing as well as the importance of naming for compliance purposes.

3.3.2 Extended Format – Excel, CSV

Extended format supports Excel and CSV (Comma-Separated Values) files. The contents and columns are identical and are discussed in [Appendix A – Extended Format: Excel and CSV File Format](#) for additional details.

3.3.3 Fixed Format – CDF

The fixed format, or CDF format, supports a limited number of transaction options and is intended for basic transaction processing. Please refer to [Appendix B – Fixed Format: CDF File Format](#) for additional details.

3.3.4 Handling of Optional Files

Both Extended and Fixed format processing supports several different types of optional files that can be embedded in the zip file ftp.zip or persisted in your account.

Supported Optional Files		
Type	Extension	Reference
Override File	.ovr	<ul style="list-style-type: none"> Specify a filename by naming the file with an .ovr extension. To make the Override File a persisted file, please contact communicationsupport@avalara.com to proceed. To embed an Override File, place the Override File into your ftp.zip file along with an Extended Format input file. Also, contact communicationsupport@avalara.com for more information on the RLM (Rate and Logic Modifier) Tool for creating and/or maintaining override files.
Exemption File	.exm	<ul style="list-style-type: none"> Specify a filename by naming the file with an .exm extension. To make the Exemption File a persisted file, please contact communicationsupport@avalara.com to proceed. To embed an Exemption File, place the Exemption File into your ftp.zip file along with an Extended Format input file. Refer to Exemption File for additional details.
Bundle File	.bdl	<ul style="list-style-type: none"> Specify a filename by naming the file with a .bdl extension. To make the Bundle File a persisted file, please contact communicationsupport@avalara.com to proceed.

Supported Optional Files		
Type	Extension	Reference
		<ul style="list-style-type: none"> To embed a Bundle File, place the Bundle File into your ftp.zip file along with an Extended Format input file. Contact communicationsupport@avalara.com for more information on the Bundler Tool for creating and/or maintaining bundle files.
Exclusion File	.exc	<ul style="list-style-type: none"> Specify a filename by naming the file with an .exc extension. To make the Exclusion File a persisted file, please contact communicationsupport@avalara.com to proceed. To embed an Exclusion File, place the Exclusion File into your ftp.zip file along with an Extended Format input file. Refer to TM_00556_Exclusion File Formats for additional information or details.
CustomSort Configuration File	customsort.cfg	<ul style="list-style-type: none"> To make the customsort.cfg file a persisted file, please contact communicationsupport@avalara.com to proceed. Note: Persisting the customsort.cfg file is the preferred method of generating the Custom Sort report. To embed customsort.cfg, place the customsort.cfg file into your ftp.zip file along with the input file. Refer to Section 1.2 of TM_00405_AFC Custom Sort Utility User Manual for additional information or details.

A request can be made to add a persisted optional file from an authorized representative of the owner of the account. Please send the request, along with the file, to communicationsupport@avalara.com. Your account will be updated with the persisted file, and it will apply to all future batch processing.

An embedded optional file is only applied to the current set of transactions contained within the ftp.zip file.

Order of handling – Persisted vs Embedded

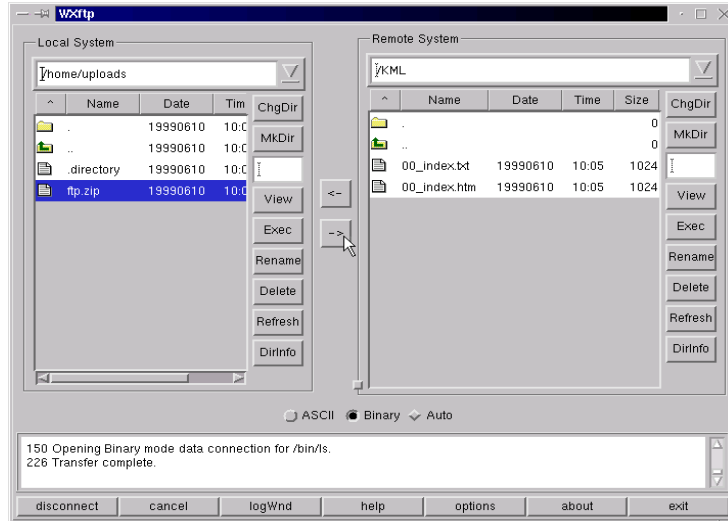
When both a persisted optional file exists and the same type of optional file is embedded in the zip file, the embedded file will be used. This is designed to support clients testing new files or having special processing for certain batch files without having to update the persisted file.

Note: All optional files (embedded and persisted) used in the transactions are returned in the report zip.

3.4 Transferring Files To and From the FTP Site

Once you are connected to the AFC FTP site, you should change to the directory that has the same name as your company's three-character code. You are now ready to send your file (which, again, must be named ftp.zip) for processing (see image below).

When successfully connected to the AFC FTP site and changed to your company's file-transfer directory, you can send your ftp.zip file for processing. You can ignore the index files.



Your uploaded file should begin processing within 30 seconds after you finish putting it on the FTP site.

When your file has finished processing, you can either download the output (or "result" file) from the AFC FTP or get it from the <https://ftp.billsoft.com> site.

This feature of the AFC SaaS Standard process allows your technical personnel to upload via FTP and your destination personnel (accountant, etc.) to download the result files via the web interface.

The result file will have a similar name to the input file you uploaded, except that the first character after the three letter company code (in the file name) will be an "R" - indicating it is a result file. For example, if your uploaded ftp.zip file contained a file called KML150117AA.CSV, the result file (for downloading) would be called KMLR150117AA.ZIP.

If the input file you upload is small, you can simply remain connected to the FTP site and wait for the file to be processed. Otherwise, you should repeat the above steps to connect and log on to the FTP site, and you can then get your result file.

3.5 Tax Calculation Results

The following zip files would be produced if a file with the base name KML150117AA is uploaded.

3.5.1 KMLS150117AA.zip - Compliance Files

Compliance Files	
File Name	Description
KML150117AA.ssf*	Summarized standard billable tax report.
KML150117AA.nba*	Summarized Non-billable tax report (as applicable).
KML150117AA.nca*	Summarized Non-compliance tax report (as applicable).

*This output file is also available in CSV format; however, the option to generate the CSV format or version must be turned on. To request this option, please contact communicationsupport@avalara.com for assistance. Please note that the CSV formats are available in the Report Files output zip file (section 3.5.2)

3.5.2 KMLR150117AA.zip - Report Files

Report Files	
File Name	Description
KML150117AA.csf	Summarized fixed position customer info report. Produced for clients configured for standard compliance reporting.
KML150117AA.tsr*	Transaction/Service Jurisdiction Report. By default, all clients will receive the tsr report.
KML150117AA.tsr.csv**	
KML150117AA._audit.tsr.csv***	
KML150117AA.rtr	Tax Inclusive Transaction/Service Jurisdiction Report (as applicable).
KML150117AA._audit.rtr.csv***	Produced if client has requested the rtr report.
KML150117AA_ASCIILOG.CSV	Contents of the tax data log converted to a comma-delimited text file with header row included. Refer to Section 5.3.1 asciilog.exe in TM_00101_AFC User Manual Telecom.pdf for more information on this report. Note: Clients wishing to receive this report must submit a request to communicationsupport@avalara.com for configuration to add this to the list of reports.
EZTax.license.rpt	Detailed version of the Transaction Count Report. Provides a count of transactions processed by transaction/service pair.
KML150117AA.ntl	Transaction/Service data that was processed but did not generate any taxes.
{output_filename_format}.rpt	Custom Sort report metrics. Provides details of the Custom Sort processing. {output_filename_format} is defined in customsort.cfg.
{output_filename_format}_nca.csv	Non-compliance Custom Sort Report (as applicable based on customsort.cfg settings). {output_filename_format} is defined in customsort.cfg.

Report Files	
File Name	Description
{output_filename_format}_nba.csv	Non-billable Custom Sort Report (as applicable based on customsort.cfg settings). {output_filename_format} is defined in customsort.cfg.
{output_filename_format}_ssf.csv	Compliance Custom Sort Report. {output_filename_format} is defined in customsort.cfg.
KML150117AA.csv	Request in comma delimited format.
KML150117AA_Default.csv	Request defaults in comma delimited format (as applicable).
KML150117AA_conversion.rpt	Conversion report. Generated if input file is in Excel format. Convert excel to comma delimited.
KML150117AA_dtl.rpt	Detailed log report. This matches SaaS Pro detailed log report.
KML150117AA.CDF_dtl.csv	
KML150117AA_dtl.rpt.csv**	
KML150117AA_error.rpt	Processing error report. Produced if errors occur during processing. Report captures the specific error message and the input line that failed processing.
KML150117AA_summary.rpt	Processing summary report.
KML150117AA.ssf.csv**	Summarized standard billable tax report.
KML150117AA.nba.csv**	Summarized Non-billable tax report (as applicable).
KML150117AA.nca.csv**	Summarized Non-compliance tax report (as applicable).

*This output file is also available in CSV format; however, the option to generate the CSV format or version must be turned on. To request this option, please contact communicationsupport@avalara.com for assistance.

**This CSV format version of the file is generated and sent in addition to the existing output format version only if the option has been activated.

***The audit version of the report contains two additional columns, Start Date and End date, which provide a timestamp for the report and headers for each column of data are included as well.

Note: All optional files (embedded and persisted) used in the transactions are returned in the report zip. Please reference [Handling of Optional Files](#) for additional information and details.

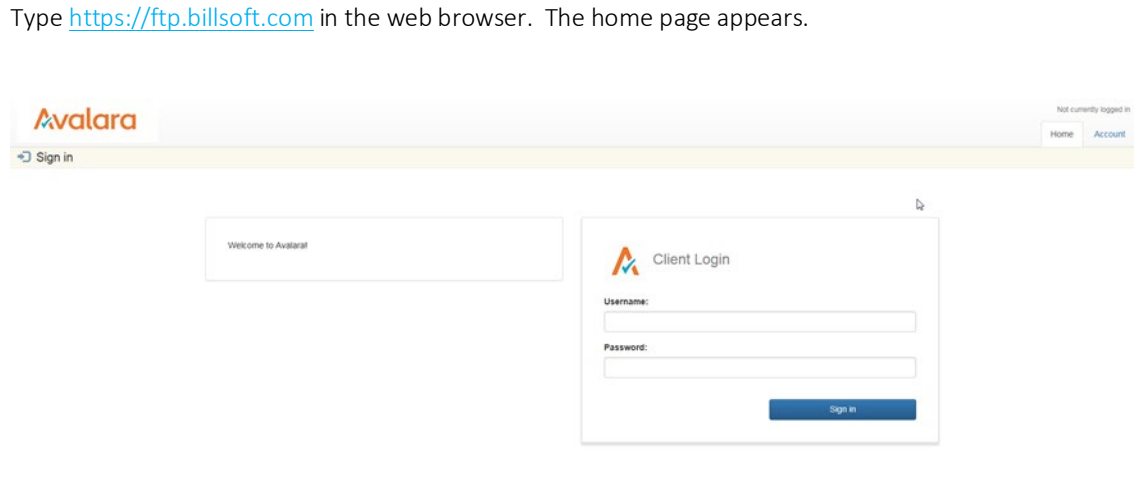
3.5.3 KMLE150117AA.zip - Status Files

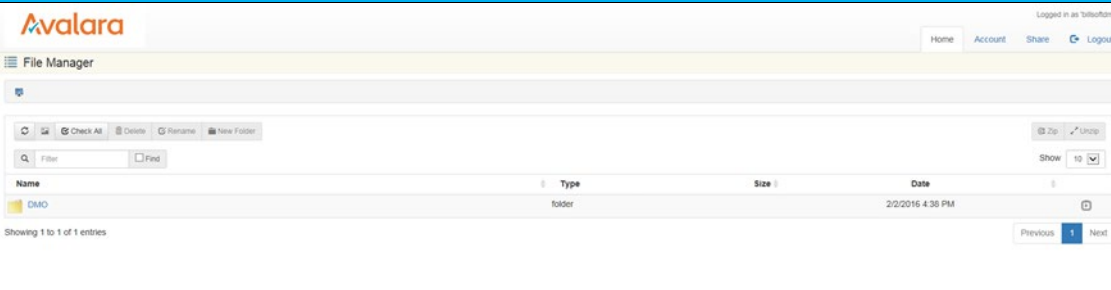
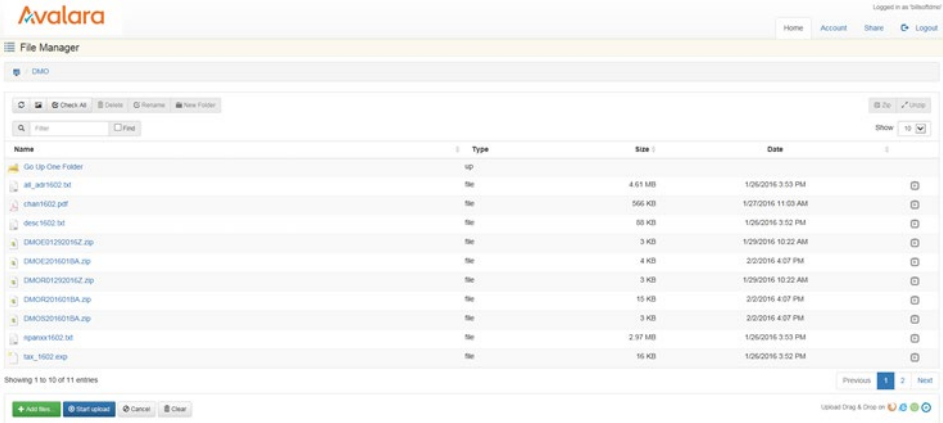
Status Files	
File Name	Description
Read_err.sta	Reports problems encountered while reading the input file. Problems might relate to invalid transaction/service type pairings or an invalid input file.
Taxer.sta	Reports status during taxing routines. Status messages pertaining to successful or unsuccessful insertion of overrides or jurisdiction not found.

Status Files	
File Name	Description
Sorter.sta	Reports status during sorting routines. Status messages pertaining to successful or unsuccessful sort after taxation has occurred.
KML150117AA_converter.sta	Applies to excel input files. If an error occurs during conversion from Excel to csv format, this file will be generated with the error message.
KML150117AA_batch.sta	Status from batch processor. Outputs column mappings and any informational, warning or error level messages.
Customsort_log.sta	Reports status during custom sort processing. Contains processing steps for the sort and any errors that may have occurred.

4. Web Interface

AFC SaaS Standard is accessible via web interface at <https://ftp.billsoft.com>. Please follow the steps provided to log in.

Step	Action/Result
1	Type https://ftp.billsoft.com in the web browser. The home page appears. 
2	Enter the username in the Username field.
3	Enter the password in the Password field.
4	Click Sign In . Once logged in, the File Manager window appears. You will be able to see all of the online products which your organization is currently subscribing to.

Step	Action/Result
	 <p>The screenshot shows the Avalara File Manager interface. At the top, there is a navigation bar with the Avalara logo and user information. Below that, there are tabs for 'Home', 'Account', 'Share', and 'Logout'. The main area is titled 'File Manager' and contains a search bar, a filter dropdown, and a table of files. The table has columns for 'Name', 'Type', 'Size', and 'Date'. A single entry is visible: a folder named 'DMO' with a type of 'folder' and a date of '2/2/2016 4:38 PM'. At the bottom, it says 'Showing 1 to 1 of 1 entries'.</p>
5	<p>Select and click the appropriate client folder such as DMO, which is the example within the screenshot. All previous output files ran in previous days or sessions will also be visible after clicking on the folder. You can confirm this by viewing the date or timestamp for each.</p>  <p>The screenshot shows the Avalara File Manager interface with the 'DMO' folder selected. The table now displays 11 entries. The entries include folders like 'Go Up One Folder' and various files such as 'all_1902.txt', 'chan1902.pdf', 'deac1902.txt', and several zip files with names like 'DMOC021902H2Z.zip', 'DMOC0219019A.zip', 'DMOC0219019Z.zip', 'DMOC0219019A.zip', and 'DMOC0219019A.zip'. Each entry shows its name, type, size, and date. At the bottom, it says 'Showing 1 to 10 of 11 entries'.</p>

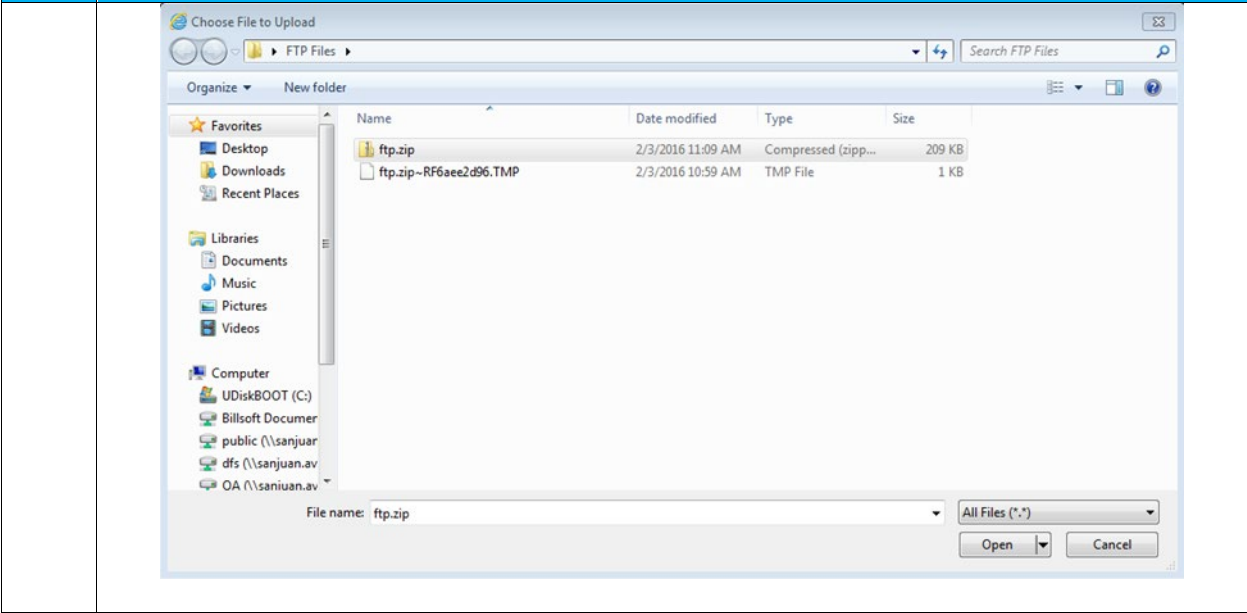
4.1 Uploading the ftp.zip

Once on the web interface, follow the steps below to upload the ftp.zip file.

Note: Please be aware that some functions or options are disabled and cannot be clicked or selected. Disabled options are grayed-out in appearance and users do not have rights to access or utilize those particular functions.

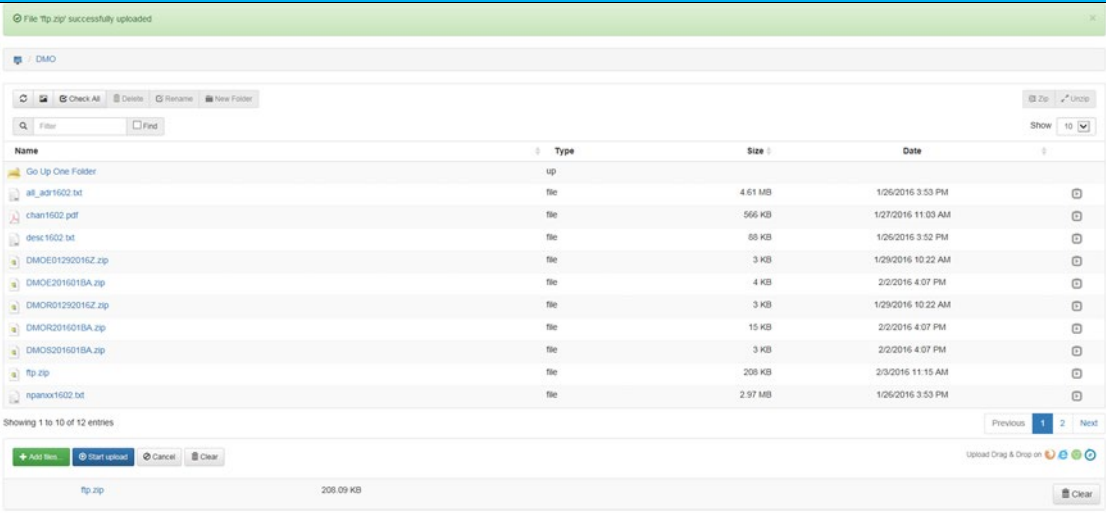
Step	Action/Result
1	Click the green Add files option to open the Choose File to Upload window to your local directory or the location where the ftp.zip you previously created is stored.

Step **Action/Result**

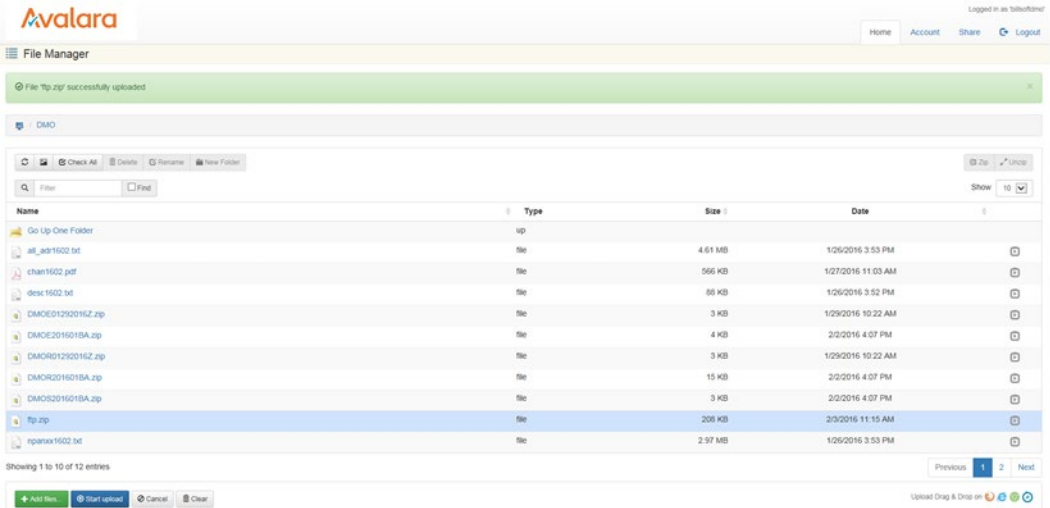


2 Highlight and double-click the filename or click **Open**.

3 Click the blue **Start upload** or the blue **Start** option. The upload process will begin and status of your upload will appear as well as verification that the upload was successful near the top of the window shaded in green.

Step	Action/Result
	

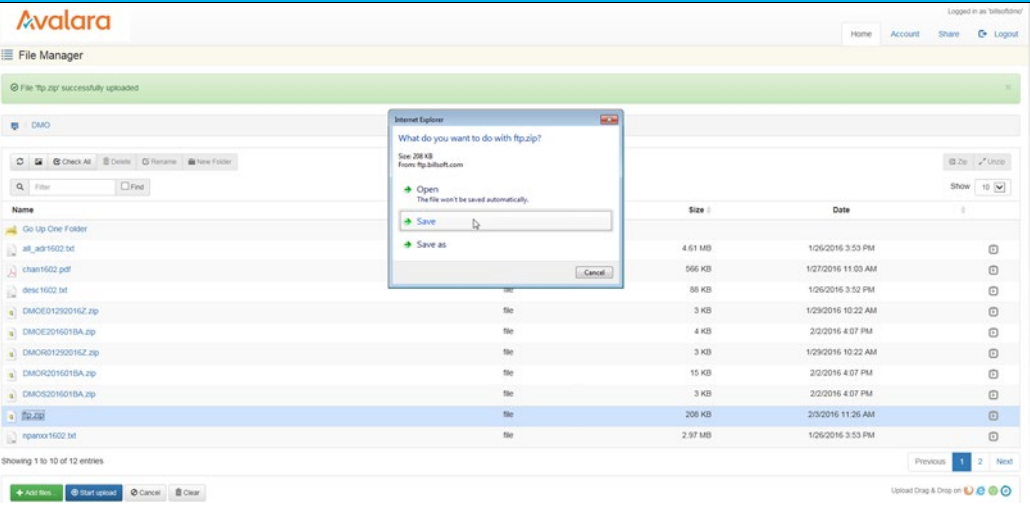
4 Once completed, the output files or results will appear (such as the one highlighted in blue in the screenshot.)

	
--	---

4.2 Retrieving Files

Please follow the steps provided below in order to retrieve or review files.

Step	Action/Result
1	View the completed files processed and locate the file with appropriate date and timestamp.
2	Highlight or double-click the file you wish to open.

Step	Action/Result
	
3	<p>Select the Save or Save as option in the window.</p> <p>Note: The file must be saved. If the file is opened and closed without being saved, it will no longer be available on the FTP site to download and save for your records.</p>

4.3 Notifications

The system is set up to automatically provide email notification of updated files and status; however, please contact communicationsupport@avalara.com with any questions or for additional assistance with this feature.

5. Transaction Mapping Guidelines

AFC uses a system of numbers to represent the Transaction Types and Service Types for the service you wish to tax. Passing valid combinations of Transaction Type / Service Type pairs provides AFC part of the information necessary to produce the appropriate taxes for a specific jurisdiction.

For more information about mapping guidelines, see the document **AFC Telecom Mapping Guidelines.pdf**, which is available for download at this URL: https://github.com/Avalara/Communications-Developer-Content/tree/master/afc_saasstd_tax/support_docs

6. Frequently Asked Questions

I have a back log of data files I need processed. Can I send them all at once?

No. You can send only one file at a time, and you must wait for that data to be processed before uploading another file. Otherwise, you face the risk of the data from one file appending or even overwriting the data from another file.

I uploaded my file quite a while ago, and I still don't see any result file. What's wrong?

The most likely reason for this is an incorrect filename or an incorrect file format. The file must be in the correct format for the system to process it. Likewise, the file must be named correctly for the system to recognize it (see the appropriate sections in this manual regarding the naming of files). The filename can be especially tricky: the actual .CSV or Excel file and .ZIP file (as they appear on your system's hard drive) must be named according to the afore-mentioned file-naming convention. Solution: if, after verifying your file is both formatted and named correctly, you are still having problems - call or email your Avalara technical support contact.

I've connected to the AFC FTP server, but I cannot view the contents of my directory.

If you're unable to change directories, or if you are unable to list the contents of your transfer directory or transfer files to/from the FTP server, you are most likely being denied access to the AFC SaaS Standard server by a firewall or proxy server.

7. Support

Avalara strives to provide the very best in customer support. If you should need assistance or further information when contacting the AFC FTP site or transferring files, please contact us at communicationsupport@avalara.com.

If you have an urgent matter outside of the hours of 8 AM to 5 PM CST Monday through Friday, please leave a message on the Avalara Technical Support contact's voice mail at (913) 221-7320.

8. Appendix A – Extended Format: Excel and CSV

8.1 Input File

The columns in the Excel and CSV file formats are the same in each format. Column headers are the first row in each file which describe the data in that particular field or column.

Field	*Required	Value List	Reference
Request Type	R	CalcTaxes CalcAdj CalcIncl CalcInclAdj	Specifying Request Type
BillTo PCode Origination PCode Termination PCode	OR		Specifying Jurisdiction PCode
BillTo Country BillTo State BillTo County BillTo Locality BillTo ZipCode BillTo ZipP4 Origination Country Origination State Origination County Origination Locality Origination ZipCode Origination ZipP4 Termination Country Termination State Termination County Termination Locality Termination ZipCode Termination ZipP4	OR		Specifying Jurisdiction Address
BillTo Fips Code Origination Fips Code Termination Fips Code	OR		Specifying Jurisdiction Fips Code
BillTo NpaNxx Origination NpaNxx Termination NpaNxx	OR		Specifying Jurisdiction NpaNxx
Transaction Type	R		Specifying Transaction / Service Pair
Service Type	R		Specifying Transaction / Service Pair
Date	R	YYYYMMDD	Specifying Transaction Date
Charge	R		Specifying Transaction Charge

Field	*Required	Value List	Reference
Customer Type	SR	Business (default) Residential Industrial Senior Citizen	Specifying Customer Type
Lines	D	Integer (default is 0)	Specifying Lines
Sale	D	Sale (default) Resale	Specifying Sale Type
Incorporated	D	True (default) False	Specifying Incorporated
Federal Exempt Federal PCode State Exempt State PCode County Exempt County PCode Local Exempt Local PCode	D		Specifying Level Exemptions
Regulated	D	True (default) False	Specifying Regulated Flag
Minutes	D	Number (default is 0)	Specifying Minutes
Debit	D	True False (default)	Specifying Debit Flag
Service Class	D	Local (default) Long Distance	Specifying Service Class
Lifeline	D	True False (default)	Specifying Lifeline Flag
Facilities	D	True (default) False	Specifying Facilities Flag
Franchise	D	True (default) False	Specifying Franchise Flag
Business Class	D	CLEC (default) ILEC	Specifying Business Class
Company Identifier	D		Specifying Company Identifier
Customer Number	D		Specifying Customer Number
Invoice Number	D		Specifying Invoice Number

Field	*Required	Value List	Reference
Discount Type	D	None (Default) Retail Product Manufacturer Product Account Level Subsidized Goodwill	Specifying Discount Type
Exemption Type	D		Specifying Exemption Type
Adjustment Method	D	Default (Default) Least Most	Specifying Adjustment Method
IsPrivateLine PrivateLineSplit	D	Percentage allocation specified as a decimal in the range 0 to 1.	Specifying Private Line or Point-to-Point
IsProRated ProRatedPct	D	Percentage allocation specified as a decimal in the range 0 to 1.	Specifying Proration
Optional Optional4 Optional5 Optional6 Optional7 Optional8 Optional9 Optional10 OptionalAlpha1	D		Specifying Optional Reporting Fields
Key:{header}	O		Specifying Extended Optional Reporting Fields
VoIP Old (Original Fed TAM)	O	TAM value specified as decimal between 0 and 1.	Specifying Safe Harbor Overrides for Traffic Studies
VoIP New (Override Fed TAM)			
Cellular Old (Original Fed TAM)	O	TAM value specified as decimal between 0 and 1.	Specifying Safe Harbor Overrides for Traffic Studies
Cellular New (Override Fed TAM)			
Paging Old (Original Fed TAM)	O	TAM value specified as decimal between 0 and 1.	Specifying Safe Harbor Overrides for Traffic Studies
Paging New (Override Fed TAM)			

***Required:**

- R = Required
- OR = Only One Required (Remaining optional)

- SR = Strongly Recommended (Default, if applicable)
- O = Optional (No Default)
- D = Optional (Default, if applicable)

Please see [Default Values](#) for additional information on default parameters.

Notes:

- Spacing is ignored in a field name. For example, [Request Type] and [RequestType] would be considered identical.
- Matching will ignore additional fields or characters beyond the listed value. Example: [Lines] and [Lines Count] would be considered identical. [Line Count] however would not be considered a valid column identifier, as it is missing the character [s].
- Column headers are required and must be included in Excel and CSV format.

8.2 Exemption File

The exemption file is an optional input file that identifies tax type exemptions, category exemptions, or both. The name of the file is user defined, but the extension must be .exm.

Note: While both a tax type and category exemption can be applied to the same transaction within the input file, the separate exemptions must be specified on individual rows within the exemption file.

Please refer to [Handling of Optional Files](#) for additional information.

8.2.1 Exemption File Updates

New Fields – Effective September 2018

Scope – union, user supplied

- One or more of the set { Federal, State, County, Local }

Include Nonbillable – flag, user supplied

- True – nonbillable taxes can be exempted
- False – nonbillable taxes should not be included in exemption

Domain – discrete, user supplied

- Defines the level the taxing jurisdiction must match exemption jurisdiction
- One of the set { Federal, State, County, Local }
- Does not need to correlate to the tax level of the tax being exempted

Ignore Level Exemptible - flag, user supplied

- True (Default) - Tax type wildcard exemptions will exempt taxes tagged not level exemptible

- False - Tax type wildcard exemptions will exclude taxes tagged not level exemptible from consideration

The exemption handling has been redesigned to allow more flexibility in how they are used. Wherever possible backwards compatibility was maintained with the following exception:

Category exemptions and wildcard tax type exemptions by default will no longer exempt non-billable taxes. The new flag ExemptNB must be set to true if a client wishes to include non-billable taxes. This change was made to protect clients from applying exemptions beyond the scope of the exemption certificate(s) for which the customer qualifies. If you have additional questions on why Avalara changed the default, please contact CommunicationSupport@avalara.com.

8.2.2 Overview of Exemptions

Setting up exemptions allows for exempting clients from taxes that would normally apply for a given product for either a specific jurisdiction or a jurisdictional region.

Checklist for creating an exemption

- **What - Is the exemption for a specific tax or for a category of taxes?**
 - Listing of tax types and associated categories can be found in the Mapping Guideline.
 - An array of exemptions can be created if multiple tax types and/or categories apply.
 - Values of **0** or **All** defines wildcard for both tax type and categories..
- **Where - Does the exemption apply to a specific jurisdiction or to a jurisdiction region?**
 - This defines the Scope. Regions are Federal (Country), State/Province, County, City.
 - You can define multiple regions for Scope such as (State + County + Local)
- **When - At what level must the exemption match the taxing jurisdiction?**
 - This defines the Domain. Domain can be one of (Federal, State, County, Local)
 - For example, if you wish to exempt Federal taxes only if the taxing jurisdiction is in Puerto Rico, then the Domain would be State and the Exemption would be defined for Puerto Rico. The federal taxes would then only be exempt when the taxing jurisdiction was in Puerto Rico.
- **Who – Define the cross-reference for who the exemption will be applied to**
 - Exemptions can be tied to transactions by one of the following:
 - Customer Number
 - Company Identifier
 - Optional Alpha1
 - Exemption Type

8.2.3 Exemption Fields

Field	Value List	Reference
[<i>Cross Reference Key</i>]		Specifying Exemption Cross Reference Key
[<i>Jurisdiction</i>]		Specifying Exemption Jurisdiction
TaxType	Numeric Tax Type ID Or "All"	Specifying Exemption Tax Type
TaxCategory	Numeric Category ID Or "All"	Specifying Exemption Category
Scope	Numeric Scope Value -or- Text Scope Value(s)	Specifying Exemption Scope
Domain	Numeric Tax Level ID -or- Text Domain Value	Specifying Exemption Domain
ExemptNB	Flag – Boolean	Specifying Exemption Exempt Non-billable Flag
ExemptLvl	Flag – Boolean	Specifying Exemption Exempt Non-level-exemptible Flag

Tax Type Exemption Sample File

The samples provided show tax type exemption files processed and properly cross-referenced by the following key columns:

- Using Company Identifier and PCode**
 The data within lines 2 – 3 of the previous input file are associated with the sample exemption file provided below.

Company Identifier	PCode	Tax Type	Domain	Scope
Company A	540000	18	0	Federal
Company A	540000	64	1	Federal+State

- Using Customer Number and LinkTo**
 The data within lines 2 – 3 of the previous input file are associated with the sample exemption file provided below.

Customer Number	LinkTo	Tax Type	Domain
Customer 1	BillTo	18	0

Customer 1	Origination	64	1
Customer 1	Termination	64	3

- **Using Customer Number and Address**

The data within lines 2 – 5 of the previous input file are associated with the sample exemption file provided below.

Customer Number	Country	State	County	Locality	Zip Code	Tax Type	Domain
Customer 1	USA					18	0
Customer 1		FL				64	1
Customer 1	USA	FL	Brevard	Cocoa Beach	32931	64	3
Customer 2	USA					169	Federal
Customer 2		CA				18	Federal
Customer 2	USA	CA	San Francisco	San Francisco	94102	16	Local

8.2.3.1 Application of Jurisdiction for Exemptions

The exemption jurisdiction should be defined at least to the Domain level specified. If it is not, the Domain will automatically shift upward to the level the exemption jurisdiction is defined at. So for example, if the Domain level is specified at city level, but the exemption jurisdiction provided is for the state of Colorado, the Domain level will shift to State and produce a match if the transaction taxing jurisdiction is in Colorado.

8.2.3.2 Exemption Default Values

Tax Type defaults (where applicable)

Field	Default	Special Condition
Include Nonbillable	True False	Valid tax type specified Wildcard for tax type used
Scope	Tax Level or Domain	
Domain	Tax Level	One or the other is required for Tax Type exemptions. Domain overrides tax level if both are provided
Force Lvl Exempt	True	Wildcard for tax type used

Category defaults (where applicable)

Field	Default	Special Condition
-------	---------	-------------------

Include Nonbillable	False	
Scope	State+County+City All	If State or lower level jurisdiction If Country level jurisdiction
Domain	State Federal	If State or lower level jurisdiction If Country level jurisdiction

8.2.3.3 Exemption Use Case Scenarios

Scenario 001 - apply exemption to all cities within a state - billable only

Client wants all tax categories of type 1 (Sales) exempt at local level for the state of Colorado (billable only).

Scope local will exempt only local taxes. Domain state will match jurisdiction at the state level (CO). Non-billable taxes will be excluded from consideration.

TaxCategory	Jurisdiction	Scope	ExemptNB	Domain	ExLvl
1	USA, CO, Boulder, Boulder	1024 (Local)	false	1 (State)	n/a

Scenario 002 - apply exemption to all states, counties and cities within a country - include non-billable

Client wants all tax categories of type 5 (Connectivity Charges) exempt at state, county and local level for all states in the USA, billable or non-billable.

Scope will exempt State, County and Local taxes. Domain Federal will match jurisdiction at the Federal level (USA). Non-billable taxes will be subject to exemption.

TaxCategory	Jurisdiction	Scope	ExemptNB	Domain	ExLvl
5	USA, TX	1792 (State+County+Local)	true	0 (Federal)	n/a

Scenario 003 - apply multiple exemptions to all locations within a state

Client wants billable Sales tax (1) and Use tax (49) exempt at state, county and city level for Washington.

Scope will exempt State, County and Local taxes. Domain State will match jurisdiction at the State level (WA).

TaxType	Jurisdiction	Scope	ExemptNB	Domain	ExemptLvl
1	USA, WA	1792 (State+County+Local)	n/a	1 (State)	n/a
49	USA, WA	1792 (State+County+Local)	n/a	1 (State)	n/a

Scenario 004 - exempt Federal tax only if taxing jurisdiction is within a state

Client wants FUSF tax (18) exempt at Federal level but only if transaction is in Puerto Rico.

Scope will exempt Federal taxes. Domain State will match jurisdiction at the State level (PR).

TaxType	Jurisdiction	Scope	ExemptNB	Domain	ExemptLvl
18	USA, PR	128 (Federal)	n/a	1 (State)	n/a

Scenario 005 - exempt all taxes at Federal level except non-level exemptible

Client wants all Federal taxes exempt at Federal level except those marked non-level exemptible. Scope will exempt Federal taxes. Domain will match at Federal level. Non-billable will be included. Taxes that are not level-exemptible will be excluded from consideration.

TaxType	Jurisdiction	Scope	ExemptNB	Domain	ExemptLvl
0	USA, PR	128 (Federal)	true	0 (Federal)	false

8.3 Transaction Default Values

Clients that use the Excel or CSV format for the input file have the option of including a default file that will be used to specify what default values should be used. The file must be named Default.{ext} with the extension being either a valid Excel extension or csv for comma delimited. The default value for each column specified will be used when the input file does not include the column.

If a customer-provided Default file is not uploaded, the following default values will be used.

Field	Default
Customer Type	Business
Lines	0
Sale	TRUE
Incorporated	TRUE
Federal Exempt	FALSE
State Exempt	FALSE
County Exempt	FALSE
Local Exempt	FALSE
Regulated	FALSE
Minutes	0
Debit	FALSE
Service Class	Local
Lifeline	FALSE
Facilities	TRUE
Franchise	TRUE
Business Class	CLEC

8.4 Transaction File Sample

The order of columns is not important, but column headers are required.

Request Type	Origination PCode	Customer Type	Date	Charge	Lines	Transaction Type	Service Type	Sale	Incorporated	Customer Number
CalcTaxes	540000	Business	20150715	100	0	19	6	True	True	Customer 1
CalcTaxes	540000	Business	20150715	100	0	19	30	True	True	Customer 1
CalcTaxes	540000	Business	20150715	100	0	19	37	True	True	Customer 1
CalcTaxes	540000	Business	20150715	100	0	19	577	True	True	Customer 1
CalcTaxes	446400	Business	20150715	100	0	19	6	True	True	Customer 2
CalcTaxes	446400	Business	20150715	100	0	19	30	True	True	Customer 2
CalcTaxes	446400	Business	20150715	100	0	19	37	True	True	Customer 2
CalcTaxes	446400	Business	20150715	100	0	19	577	True	True	Customer 2

8.5 Default File Sample

The order of columns is not important, but column headers are required. There should only be a single line of data indicated what default values to use. You need only define default values for columns that are not otherwise defined or that are different from the default values used by the service.

Regulated	Debit	Service Class	Lifeline	Facilities Based	Franchise	Business Class
True	False	Local	False	False	False	CLEC

8.6 Specifying a Tax Jurisdiction

For AFC to calculate taxes for transactions correctly, it must first determine the taxing jurisdiction for the transaction in question. The tax laws of various jurisdictions complicate this. AFC currently supports multiple unique rules for determination of the correct tax jurisdiction. Jurisdiction determination is usually based upon three inputs to AFC:

1. The Service Address or the Bill To Number (BTN).
2. The termination location of the transaction (for telephone calls only) to be taxed. The number called, also known as the "To Number" or the "Termination number" usually specifies this.
3. The origination location of the transaction to be taxed. For telephone calls this is usually specified by the number called from, also known as the "From Number" or Origination number.

The jurisdiction, for many telecommunications taxes applied by AFC, is determined by the Goldberg or "2 out of 3" rule. With this particular rule, the three jurisdiction inputs pointed out above are compared. If 2 of the 3 jurisdictions supplied match, that is the jurisdictions for which taxes are generated. It is slightly

more complicated since there are four authority levels for which jurisdictions determination must be made (i.e. federal, state, county, and local), however; this brief discussion illustrates the concept. Remember, the Goldberg Rule although the most common, is only one of 10 rules specified for jurisdiction determination by taxing jurisdictions in the United States.

Jurisdiction information can be supplied to the system in different ways. It can be supplied using a permanent jurisdiction code (PCode), using a FIPS Code, using an NPANXX, or using zip code and address information. AFC allows the user to identify the jurisdictions by any of these methods, thereby providing maximum flexibility. AFC allows the specification of jurisdiction information using any combination of these methods during the same session.

8.6.1 Jurisdiction Hierarchy

Clients have the option of specifying one, two or all three jurisdictions for a single transaction. If only one jurisdiction is specified, it will be used for all three. If two jurisdictions are specified, the following hierarchy will be used for determining which jurisdiction will be used to populate the missing jurisdiction.

High Level Jurisdiction Order of Preference (by Transaction):

1. BillToPCode
2. Origination
3. Termination

The following table of populating missing jurisdiction from jurisdictions is provided.

Missing Jurisdiction	Hierarchy Application	Resulting Jurisdictions Used
BillTo	Uses Origination	Orig, Orig, Term
Origination	Uses BillTo	BillTo, BillTo, Term
Termination	Uses BillTo	BillTo, Orig, BillTo

8.6.2 Jurisdiction Data Types

PCode

PCodes are permanent jurisdiction codes which Avalara provides and allow AFC software users to populate their databases with jurisdiction information. With PCodes, AFC clients can populate their customer records with jurisdiction information and never worry about changes of jurisdiction codes. If a jurisdiction code changes, AFC re-maps the PCodes so clients are not affected. This allows AFC clients to populate client records with a PCode.

For more information refer to [Specifying Jurisdiction PCode](#).

Address

The accuracy of the ZIP code method depends upon the amount of data provided for the address as well as the user's ability to choose the correct taxing jurisdiction zip code and address. AFC databases contain numerous duplicate zip codes that cross not only taxing jurisdiction boundaries, but boundaries of localities as well. Providing a complete address along with the zip code insures the best match possible. When address information is missing, AFC returns taxes based upon the first match of the provided input information.

It is appropriate to use the zip code interface or PCode methods for transactions where the jurisdiction can be positively identified by the calling application. Examples of this type of transaction are product sales and Internet usage.

For more information refer to [Specifying Jurisdiction Address](#).

FIPS Code

FIPS Codes are issued by the National Institute of Standards and Technology (NIST). AFC provides internal translation tables from FIPS Codes to PCodes, so that using FIPS Codes is almost as fast and accurate as using PCodes. Some special taxing districts are not identified in separate FIPS codes, so there is some loss of accuracy, but the majority of transactions will produce the same tax results with FIP Codes as with PCodes.

For more information refer to [Specifying Jurisdiction Fips Code](#).

NPANXX

The NpaNxx is the first 6 digits of a phone number.

For more information refer to [Specifying Jurisdiction NpaNxx](#).

8.6.3 Jurisdiction Data Type Hierarchy

If a client supplies more than one data type for a single jurisdiction, the following hierarchy will be used to determine which jurisdiction data type is used for that jurisdiction.

Jurisdiction Data Type Order of Preference (by Jurisdiction):

1. PCode
2. Address
3. FIPs Code
4. NpaNxx

For example, if a transaction has both an OriginationPCode and an OriginationNpaNxx specified, the OriginationPCode value will be used for the Origination Jurisdiction.

8.7 Getting the Right Tax Jurisdiction for Local Taxation

It is important to get the end users location correct for local taxation. People tend to know what they are charged for local taxes. These taxes also have a tendency to change from one neighborhood to the next.

Avalara provides a comma delimited ASCII file to aid with entry of customers in your system and to help insure the correct taxing jurisdiction is setup. The file is "all_adr.txt". This comma delimited ASCII files is provided to allow Avalara clients to populate database tables in their system with this information. The all address (all_adr.txt) file is a cross-reference of locations to PCodes. The format of the files is illustrated below.

The "all_adr.txt" file format and example follows:

Pcode,P/A,Country,State,County,City,"Zip code range start","Zip code range end"

```
3346800,0,USA,PA,LANCASTER,BART,17503,17503
3346900,0,USA,PA,LANCASTER,BAUSMAN,17504,17504
3347000,0,USA,PA,LANCASTER,BIRD IN HAND,17505,17505
3347100,0,USA,PA,LANCASTER,BOWMANSVILLE,17507,17507
3347200,0,USA,PA,LANCASTER,CHRISTIANA,17509,17509
3347300,0,USA,PA,LANCASTER,CHURCHTOWN,17555,17555
3347400,0,USA,PA,LANCASTER,CONESTOGA,17516,17516
3347500,0,USA,PA,LANCASTER,DRUMORE,17518,17518
3347600,0,USA,PA,LANCASTER,EAST EARL,17519,17519
3347700,0,USA,PA,LANCASTER,ELM,17521,17521
3347800,0,USA,PA,LANCASTER,GAP,17527,17527
```

8.8 Transaction Specifications

8.8.1 Specifying Request Type

The request type tells the engine what type of calculation should be performed on the transaction data. The request type is independent of the jurisdiction type, and supports all jurisdiction specifications.

Please refer to the table below to view the request types which are supported.

Request Type	
Value	Description
CalcTaxes	Perform a standard tax calculation.
CalcAdj	Calculate an adjustment for a standard tax calculation. All transaction data, including charge and transaction date, should be identical to the standard calculation. Supports Specifying Adjustment Method and Specifying Discount Type .
CalcIncl	Perform a tax inclusive calculation. The desired total (charge + taxes) should be placed in the "Charge" column. The tax calculation method will determine the "base charge" that is needed such that (base charge + taxes calculated = desired total). Notes: <ul style="list-style-type: none">The desired total must be a positive value sufficiently large to cover any fixed taxes that may apply.

Request Type	
Value	Description
	<ul style="list-style-type: none"> The calculated base charge will be stored in the optional field as an unsigned long where: optional = (unsigned long)(base charge * 100) Clients using tax inclusive calculations should not use the optional field or the data in the optional field will be overwritten. The standard TSR report uses the calculated base charge. To add the original charge passed in, a request needs to be made to receive the RTR (Reconciliation Transaction/Service Report).
CalcInclAdj	<p>Calculates an adjustment for a tax inclusive calculation. All transaction data, including charge and transaction date, should be identical to the tax inclusive calculation. Refer to CalcIncl Request Type for more details on tax inclusive calculations.</p> <p>Supports Specifying Adjustment Method and Specifying Discount Type.</p>

8.8.2 Specifying Jurisdiction PCode

A PCode is a persisted numeric identifier for a taxing jurisdiction. It can represent anything from a country to a special taxing jurisdiction within a local taxing district, such as the Salado Public Library District in Bell, Texas.

The value can be obtained from either using our Avalara Geo for Communications (AFC Geo) product or from parsing the PCode from the all_adr.txt file. [Getting the Right Tax Jurisdiction for Local Taxation](#) has more information on the format and contents of this file.

8.8.3 Specifying Jurisdiction Address

When using an address to specify the taxing jurisdiction, the more complete the information provided the more accurate the lookup will be. For most foreign nations, other than Canada and Brazil, the country is sufficient for taxation purposes. For USA and Canada, at a minimum the Country, State and Zip Code must be provided.

If the address is for a USA Territory, it can be handled the same as a USA state by using the provided two byte state abbreviation.

Supported USA Territory abbreviations are provided in the following table.

Code	Territory	Special Handling Notes
AS	American Samoa	
FM	Fed St of Micronesia	
GU	Guam	Leave County blank
MH	Marshall Islands	
MP	Northern Mariana Islands	
PR	Puerto Rico	Leave County blank
PW	Palau	
VI	US Virgin Islands	

For Canada, you may populate the 6 digit Postal Code in the Zip Code field (with or without a dash or space). Zip plus 4 (ZipP4) is for USA only.

Supported Canadian Province and Territory abbreviations are provided in the following table.

Code	Territory
AB	Alberta
BC	British Columbia
MB	Manitoba
NB	New Brunswick
NL or NF	Newfoundland
AB	Alberta
NS	Nova Scotia
NT	Northwest Territories
NU	Nunavut
ON	Ontario
PE	Prince Edward Island
QC or PQ	Quebec
SK	Saskatchewan
YT	Yukon Territory

A breakdown of the address fields are below. The **Column Name** should be prefixed with either BillTo, Origination or Termination (as applicable).

ZipAddress	
Column Name	Description
Country	3 character ISO abbreviation
State	State Abbreviation
County	County name
Locality	City name
ZipCode	ZIP Code (5 digit USA, 6 digit Canada)
ZipP4	ZIP Code extension (4 digit)

The **all_adr.txt** file can be used to verify zip address data. [Getting the Right Tax Jurisdiction for Local Taxation](#) has more information on the format and contents of this file.

Optionally, the Viewer in the AFC Manager can also be used for manual verification.

Note: The country will default to USA if no country is specified.

8.8.4 Specifying Jurisdiction FIPS Code

“The Federal Information Processing Standards codes (FIPS codes) are a standardized set of numeric or alphabetic codes issued by the National Institute of Standards and Technology (NIST) to ensure uniform identification of geographic entities through all federal government agencies. The entities covered include: states and statistically equivalent entities, counties and statistically equivalent entities, named

populated and related location entities (such as, places and county subdivisions), and American Indian and Alaska Native areas”.

A FIPS Code may be used to identify a jurisdiction, but must follow the 10-digit numeric code with the following format:

FIPS CODE FORMAT	
SSCCPPPP	
SS	FIPS State Code
CCC	FIPS County Code
PPPPP	FIPS Place Code

8.8.5 Specifying Jurisdiction NPANXX

NPANXX 6 digit numbers may be used for specifying a jurisdiction. There are issues to be considered with using the NPANXX.

1. The first six digits of a toll free number do not constitute an NPANXX. Rather, these numbers are associated with a “ring to” number which is the number that is actually reached when the toll free number is dialed. The NPANXX of the “ring to” number should be used as the NPANXX for the toll free number. This replacement must be made before the information is passed to the AFC system.
2. Switches are capable of producing CDRs with account codes in place of a “Bill To” number, which is not related to an actual NPANXX. The user is required to convert this number to the actual NPANXX using data from the billing system before interfacing with AFC.
3. Use of NPANXX for determination of a taxing jurisdiction is generally considered not sufficient for local service. There is often an unacceptable rate of foreign exchanges that incorrectly map customers to the wrong local tax jurisdiction resulting in the wrong local taxes being calculated.

NPANXXs exist for the U.S., Barbados, Canada, Guam, Mexico, Northern Mariana Islands, Puerto Rico, Trinidad & Tobago and the US Virgin Islands. These countries are on the North American dialing plan.

8.8.6 Specifying Transaction / Service Pair

AFC stipulates a unique pair of numbers for each Transaction and Service Type. The first number defines the Transaction Type and the second number defines the Service Type. Transaction Types and Service Types are combined (or “paired”) to uniquely describe a Valid Transaction / Service Pair for a transaction.

Refer to the document [TM_00505_AFC Telecom Mapping Guidelines.pdf](#) for a complete list of all t/s pair mappings and product mapping guidelines.

8.8.7 Specifying Transaction Date

The Date field is normally populated with the bill date, invoice date or call date (as applicable) and may appear in any of the Standard Date and Time Format Strings for .NET Framework shown in the table below.

Date Format	Sample
yyyymmdd	20160601
mm/dd/yyyy	06/01/2016
m/d/yyyy	6/1/2016
mm-dd-yyyy	06-01-2016
m-d-yyyy	6-1-2016
yyyy-mm-dd	2016-06-01
yyyy-m-d	2016-6-1
yyyy-mm-ddThh:MM:ss	2016-06-01T13:45:30
yyyy-m-dThh:MM:ss	2016-6-1T13:45:30

AFC compares this date to the effective date of each tax that applies to the transaction. Historical rates and effective dates are maintained and updated within AFC and it will return the correct tax information based upon the transaction date. The monthly updates assure that the rates and effective dates are current.

Note: The invoice date passed to the server in the transaction by default is preserved as is. For example, if the date 1/1/2017 is passed, Avalara does not convert the time and will use 1/1/2017. It is recommended that clients not use modifiers on the invoice date.

8.8.8 Specifying Transaction Charge

For standard calculations, the Charge field specifies the amount of the transaction to be taxed and it may appear in any of the numeric or currency formats supported in Microsoft Excel. Please refer to the table shown below for specific examples of positive or negative charge amounts.

Charge	Examples
1500	1500.00 1,500.00 \$1,500 \$1,500.00
-1500	-1500.00 -1,500.00 (1500.00) (1,500.00) (\$1,500.00)

For Tax Inclusive calculations, this field specifies the desired total (base charge + taxes). Please refer to [Specifying Request Type](#) for additional details on adjustments or tax inclusive calculations.

8.8.9 Specifying Customer Type

This field is used to specify the type of customer involved in the transaction. The customer type is selected from one of the following four Customer Types.

Customer Type		
ID	Value	Description
0	Residential	When transactions are made by a customer for home use.
1	Business	When transactions are made at a place of business
2	Senior Citizen	When transactions are made by a customer who meets the jurisdiction requirements to be considered a senior citizen and qualify for senior citizen tax breaks.
3	Industrial	When transactions are made at an industrial business.

8.8.10 Specifying Lines

When local service is provided, a transaction should be generated with the Lines field populated with the number of lines the customer subscribes to. AFC uses this information for generation of per line taxes usually associated with local E911 charges and local telecommunications relay service taxes and other assorted taxes.

Transaction Fields	
Column Name	Description
Lines	Numeric : integer >= 0 (rounded to nearest integer using the half round up method)

8.8.11 Specifying Sale Type

Sale should be used for retail transactions. Resale should be used for wholesale transactions. Telecommunication companies are taxed on transactions made by their clients, which in some cases can be passed on or “resold” to their customers in part or in total. Resale is used to indicate whether the product or service transaction is final or if it is to be resold.

To have exempt taxes available for reporting, exemption type 3 (Sales For Resale) should be used in combination with Resale.

Sale Type		
ID	Value	Description
0	Resale	Only Resale/Wholesale taxes apply
1	Sale (Default)	Standard taxes apply

8.8.12 Specifying Incorporated

The Incorp field is used to specify whether the customer involved in this transaction is inside or outside of the Local level designated as their location. The tax may or may not be affected by this designator depending upon whether or not the local level has taxes which would apply to the transaction/service type pair. Marking transactions as Incorporated = False will usually result in no local taxes returned. If not sure, the value True is the recommended setting to be used.

Incorporated Flag

Value	Description
True (Default)	Jurisdiction is inside an incorporated location.
False	Jurisdiction is outside an incorporated location.

8.8.13 Specifying Level Exemptions

The tax logic has a flag that indicates whether it is level exemptible or not. Only those taxes which have been flagged to be level exemptible can be exempted through specifying a level exemption.

The exemption PCode is the PCode associated with the jurisdictional level of the taxing authority that defines the tax. It is used to exempt all federal, state, county and / or local taxes. If the exemption PCode fields are not specified then all taxes are exempt at that level.

The **Exempt Level** field to be used (set to True) should be chosen based upon the level of the tax to be exempted.

Examples:

If the desire is to exempt all New York state taxes, but not New Jersey (or other states), then the following would be used:

Field	Value
State Exempt	True
State PCode	2502500

If the desire is to exempt all state taxes, then the following would be used:

Field	Value
State Exempt	True
State PCode	0

8.8.14 Specifying the Regulated Flag

The Regulated Flag is used to specify whether the telecommunication company and its services are regulated by the regulatory commission in the state of the service. Unless the seller is registered with the state regulatory commission as a rate-regulated, incumbent provider, all transactions should be Regulated = False.

Field	Value	Description
Regulated Flag	True	Company is rate-regulated
	False (Default)	Company is not rate-regulated

8.8.15 Specifying Minutes

The Minutes (Call Duration) Field specifies the length of phone call in minutes, with one tenth of a minute precision capability. AFC uses this field for generation of taxes that are specified as per minute flat fees in some taxing jurisdictions and stores the value in the AFC log database. The number is a double so any

seconds added should be in decimal format. For example, 20 minutes and 30 seconds would be 20.5 minutes.

Transaction Fields	
Column Name	Description
Minutes	Numeric : floating point >= 0.0

8.8.16 Specifying Debit Flag

Setting the value to True triggers a special prepaid taxing routine.

In general, unless you are a prepaid seller and understand the impact of setting the debit flag, the value of False should be used. Contact Avalara Support for more information if you are not sure if setting this flag to True is applicable to your business.

Debit Flag	
Value	Description
True	Perform a debit call tax calculation.
False (Default)	Debit does not apply.

8.8.17 Specifying Service Class

The Service Class Indicator is provided to delineate the Primary activity of an organization as either Long Distance or Local Service. The service class only impacts Telecom transactions in certain jurisdictions, such as New York.

Service Class		
ID	Value	Description
0	Local (Default)	Primary Local Service providers are carriers vending their services with over 50% of the gross business activities in Local Service revenue.
1	Long Distance	Primary Long Distance providers are carriers vending their services with over 50% of the gross business activities in Long Distance revenue.

8.8.18 Specifying Lifeline Flag

The Lifeline flag is used to indicate if a customer is a Lifeline participant.

Lifeline Flag	
Value	Description
True	Has the effect of turning off the calculation of taxes that are not collected from Lifeline recipients.
False (Default)	Collects all taxes.

8.8.19 Specifying Facilities Flag

The Facilities flag specifies the tangible facilities used by a company to deliver the service. This designation applies to Seller.

If the carrier delivering the service uses company-owned facilities to provide the service, then it is facilities-based. If the carrier does not own the facilities, it is non-facilities based.

Facilities Flag	
Value	Description
True (Default)	Seller is facilities based.
False	Seller is not facilities based.

8.8.20 Specifying Franchise Flag

The Franchise flag indicates that the company provides services sold pursuant to a franchise agreement between the carrier and the jurisdiction. This designation applies to the Seller.

Note: Marking the transaction as Franchise = False will often result in no franchise fees or taxes being returned.

Franchise Flag	
Value	Description
True (Default)	Seller has a franchise agreement with jurisdiction.
False	Franchise fees and taxes do not apply to seller.

8.8.21 Specifying Business Class

The Business Class Indicator field is used to specify whether the business making the transaction is an Incumbent Local Exchange Company (ILEC) or a Competitive Local Exchange Company (CLEC). This designation applies to the Customer.

This setting can also be considered as, “You are ILEC” or, “You are not ILEC.” If neither class applies, use the default value **CLEC**.

The business class only impacts Telecom transactions in certain jurisdictions, such as Oregon.

Business Class		
ID	Value	Description
0	ILEC	Customer is an ILEC company.
1	CLEC (Default)	Customer is not an ILEC company.

8.8.22 Specifying Company Identifier

The company identifier does not impact taxation, but is useful in reporting. Normally this field would only be used if you need to distinguish transactions for different companies.

Reporting Fields	
Column Name	Description
Customer Identifier	Alpha-numeric field. Supports up to 20 bytes.

8.8.23 Specifying Customer Number

The customer number does not impact taxation, but is useful in reporting. Normally this field would only be used if you need to distinguish transactions for different customers.

Reporting Fields	
Column Name	Description
Customer Number	Alpha-numeric field. Supports up to 20 bytes.

8.8.24 Specifying Invoice Number

The invoice number does not impact taxation, but is useful in reporting. Normally this field is only used if you need to distinguish transactions for different invoices.

Reporting Fields	
Column Name	Description
Invoice Number	<p>Unsigned long value. Should be ≥ 0. The max value is different for different platforms, but in general supports values at least up to 4294967295 ($2^{32} - 1$).</p> <p>Note: All numerical values entered into fields, such as Invoice Number, are considered integers and cannot be greater than the maximum value previously noted in this table. Any numbers larger than this value cannot be passed in AFC SaaS Standard and will produce an error message indicating the value is too large.</p>

8.8.25 Specifying Discount Type

AFC has an additional table that stores discount types by state with an “allow ability” indicator. The adjustment functions have arguments for the discount type which look up the discount type from the table to determine whether to apply taxes or not.

Discounts may or may not be taxed within each state. When a discount is taxed, the customer receives a tax benefit commensurate with the amount of the discount (i.e., if the customer gets \$5 off on a transaction subject to a 5% tax, the customer pays \$0.25 less in tax than they would have). When a discount is not taxed, the customer receives non tax benefit from the discount. Whether a discount is taxed or not depends on the type of discount and the rules in a particular tax jurisdiction.

Discount types only apply to adjustment transactions. Refer to **Section 4.1.7 Discount Adjustments in TM_00101_AFC User Manual_Telecom.pdf** for more information on calculating adjustments.

Discount Type		
ID	Value	Description
0	None (Default)	Discount Type not applicable.
1	Retail Product	An amount subtracted from the original price to arrive at a lower price.
2	Manufacturer Product	A credit applied to the total amount reimbursed to either the retailer or the customer by the manufacturer.
3	Account Level	A stand-alone discount that is not applied against any service but instead as a stand-alone product.
4	Subsidized	A credit for telephone service where the telephone provider provides a service to a lifeline eligible customer. The credit will be applied to the subscriber line charge.
5	Goodwill	A credit applied to customer invoices for the purpose of engendering customer goodwill. For example, compensation for a service outage.

8.8.26 Specifying Exemption Type

- Specifying the exemption type is for reporting purposes only and does not impact tax calculations.
- Spaces and capitalization do not matter in Exemption Type value.
- The **bolded** text is sufficient, additional characters are ignored.
- The optional numeric ID can be used. For example:
 Non Profit Sales = nonprofitsales = nonprofit = 6
 Fed Coupons WIC Vouchers = Fed Coupons = FEDCOUPONS = 4

Exemption Type		
ID	Value	Description
0	None (Default)	Exemption Type not applicable.
1	Fed Sales Supremacy	Sales to the Federal government exempt based on supremacy.
2	State Local Gov Sales	Sales to the State or Local government in the state that you operate in.
3	Sales for Resale	Sales that are designated for resale.
4	Fed Coupons WIC Vouchers	Sales at retail for which Federal government coupons or vouchers under the supplemental feeding for women, infants and children program are used as payment.
5	Reduced Food Rate	Tax imposed on food that is taxed at a reduced rate.
6	Non Profit Sales	Sales made by or to not-for-profit civic, social, service or fraternal organizations.
7	Public School Sales	Sales made by or to all elementary and secondary schools operated at public expense in their educational functions and activities.
8	Religious Charitable Sales	Sales made by or to religious and charitable organizations and institutions in their religious, charitable or educational functions and activities.
9	Prescription Drug Sales	Drugs which may be legally dispensed by a licensed pharmacist only upon a lawful prescription of a practitioner licensed to administer those items.
10	Prosth Ortho Devices	Prosthetic or orthopedic devices as defined on January 1, 1980, by the Federal Medicare program pursuant to Title XVIII of the Social Security Act of 1965.
11	Insulin Sales	All sales of insulin.
12	Interstate Foreign Sales	Sales in commerce between various states or between any foreign country (Export Sales).

Exemption Type		
ID	Value	Description
13	Ingredient Component Parts	Sale of ingredient or component parts.

8.8.27 Specifying Adjustment Method

In certain cases, when the rate of a tax will change based upon the charge or the number of lines in the transaction, clients may wish to make an adjustment at a different rate than would normally apply for the transaction.

For example, if the client purchased 20 lines at a rate of \$0.67 per line and the credit or adjustment is for 5 lines at a rate of \$1.25 per line, then usage of LEAST for the adjustment method would refund the 5 lines at the least favorable rate for the brackets making sure the client was not over compensated.

If unsure, use the value “Default”.

Adjustment Method	
Value	Description
Default (Default)	Standard Tax Brackets applied for transaction.
Least Favorable Rate	Tax brackets applied to produce smallest tax refund.
Most Favorable Rate	Tax brackets applied to produce largest tax refund.

8.8.28 Specifying Private Line (Point-to-Point)

Private line, or Point-to-Point (PTP) as it is often referred to, allows a transaction to be split between the A point and Z point. If “IsPrivateLine” is set to true, then the “PrivateLineSplit” must also be provided. If all transactions have the same split, the default file can be used to set the PrivateLineSplit.

Private Line or Point-to-Point	
Column Name	Description
IsPrivateLine	True/False
PrivateLineSplit	Percentage allocation specified as a decimal in the range 0 to 1. Example: For a 40% - 60% split, the value 0.4 would be specified. 40% would be applied to the A point, and 60% to the Z point.

The Origination Jurisdiction will be used for the A point, and the Termination Jurisdiction will be used for the Z point.

Note: This feature is only supported with processing of tax calculations and adjustments which are not Tax Inclusive. It is not supported for use with Tax Inclusive calculations.

8.8.29 Specifying Proration

The Proration feature provides clients with the ability to calculate prorated taxes on a transaction that represents a partial month of service. Percentage-based taxes are prorated by way of the charge amount passed. However, fixed and per line taxes are subject to special prorating rules and procedures. Some tax authorities allow sellers to pro-rate fixed and per line taxes for partial months, but many insist on receiving the full amount. AFC will apply these rules automatically if the prorating feature is used. . A number between 0 and 1 is passed to specify the percentage of the month the service was active. The prorating functionality checks the logic of each tax in the appropriate jurisdiction to determine if prorating is allowed. If prorating is not allowed, the full amount is taxed. If prorating is allowed, the fixed or per line tax applicable to the service will be returned multiplied by the fraction supplied.

If the proration is being used for an adjustment credit rather than a partial charge, the ratio of the percentage applied should reflect the portion of the month in which the service was not active.

Proration	
Column Name	Description
IsProRated	True/False
ProRatedPct	Percentage allocation specified as a decimal in the range 0 to 1.

If IsProRated is true and a prorated percentage is not provided, the default value of 1 will be applied.

8.8.30 Specifying Default Optional Reporting Fields

AFC SaaS Standard provides up to 9 Default Optional Fields. The optional fields do not impact taxation, but can be useful in reporting. As noted in [Specifying Request Type](#), the field **Optional** should not be used when performing tax inclusive calculations.

Reporting Fields		
Column Name	Description	
Optional	Unsigned long value. Should be ≥ 0 . The max value is different for different platforms, but in general supports values at least up to $4294967295 (2^{32} - 1)$.	
Optional4		
Optional5		
Optional6		
Optional7		
Optional8		
Optional9		
Optional10		
OptionalAlpha1		Alpha-numeric field. Supports up to 20 bytes.

8.8.31 Specifying Extended Optional Reporting Fields

AFC SaaS Standard provides up to 10 Extended Optional Fields. The optional fields do not impact taxation, but can be useful in reporting. As noted in [Specifying Request Type](#), the field **Optional** should not be used when performing tax inclusive calculations.

8.8.32 Specifying Exemption Cross Reference Key

The exemption file requires the name of the first column to be the one of the appropriate cross reference keys that ties the exemption to the applicable transactions. The value of the cross reference key should match exactly the value of the applicable transaction column in the input file. The following table shows valid options for the column header names which may be used to represent the cross reference key. (Please note that only one option for column name may be selected.)

Cross Reference Key	
Column Name	Description
Customer Number	Ties exemption(s) to input file transactions with matching Customer Number . Refer to Specifying Customer Number for more details on the field.
Company Identifier	Ties exemption(s) to input file transactions with matching Company Identifier . Refer to Specifying Company Identifier for more details on the field.
OptionalAlpha1	Ties exemption(s) to input file transactions with matching OptionalAlpha1 . Refer to Specifying Optional Reporting Fields for more details on the field.
Exemption Type	Ties exemption(s) to input file transactions with matching Exemption Type . Refer to Specifying Exemption Type for more details on the field.

8.8.33 Specifying Exemption Jurisdiction

The exemption jurisdiction can be specified through any of the jurisdiction types in the **Exemption Jurisdiction Table**. Only one of the jurisdiction options should be chosen for a given exemption.

Exemption Jurisdiction Table		
Column Header(s)	Values List	Description
Link To	BillTo Origination Termination	Linked jurisdictions are useful for when the jurisdiction of the taxes to be exempted can be defined by one of the input transaction jurisdictions. When the tax calculation occurs, the exemption will be updated with the correct corresponding jurisdiction from the transaction. If all three jurisdictions in the input transaction are the same, the linked exemption would always apply.
PCode	Numeric	The PCode should be the same level or lower than the targeted tax level. Refer to Specifying Jurisdiction PCode for more details on the field.
Country State County Locality ZipCode ZipP4	Address	The address can be Country Only, State Only (for USA), or any valid address. Refer to Specifying Jurisdiction Address for more details on the address fields.
Fips Code	10 digit number	The Fips Code should be the same level or lower than the targeted tax level. Refer to

Exemption Jurisdiction Table		
Column Header(s)	Values List	Description
		Specifying Jurisdiction Fips Code for more details on the field.
NpaNxx	6 digit number	Refer to Specifying Jurisdiction NpaNxx for more details on the field.

8.8.34 Specifying Exemption Domain

Domain determines the jurisdiction level at which the exemption jurisdiction must match the taxing jurisdiction. The domain will automatically shift upwards if the exemption jurisdiction is defined at a higher level than the domain.

The domain value can be specified either by numeric id or the equivalent text representation. Capitalization is ignored (FEDERAL = Federal = 0).

Exemption Type		
ID	Value	Description
0	Federal	Matches at the Federal or Country level.
1	State	Matches at the State, Province or Territory level.
2	County	Matches at the County level.
3	Local	Matches at the Local or City level.

8.8.35 Specifying Exemption Scope

Exemptions are designed to be applied for one or more specific tax types. The tax type is required.

Exemption Scope	
Value	Description
Numeric value	Numeric mask representing summarized scope values.
Text value	Text representing combined scope values.

Description of values

Scope Base Numeric Value	Scope Base Text Value
128	Federal
256	State
512	County
1024	Local

To get combinations, add up the numeric values or combine the text values with + as the separator.

Examples:

Scope Numeric Value	Scope Text Value Options
1920	All Federal+State+County+Local F+S+C+L
1792	State+County+Local S+C+L
384	Federal+State F+S

8.8.36 Specifying Exemption Tax Level (Deprecated – Use Domain instead)

The tax level can be specified either by numeric id or the equivalent text representation. Capitalization is ignored (FEDERAL = Federal = 0).

Exemption Type		
ID	Value	Description
0	Federal	Exemption applies to Federal taxes.
1	State	Exemption applies to State taxes.
2	County	Exemption applies to County taxes.
3	Local	Exemption applies to Local taxes.

Note: Most Federal taxes are only exempted when selling to a reseller who is registered, reporting, and remitting to the regulating agency. For this reason, a wholesale exemption or a tax type exemption must be used to exempt taxes at the Federal level.

8.8.37 Specifying Exemption Category

Exemptions may also be applied by tax category in AFC SaaS Standard. Clients may enter the appropriate tax category ID instead of a tax type ID.

Please reference the table below for a current list of tax categories in AFC SaaS Standard.

Tax Categories	
Category ID	Name
0	No Category Description
1	Sales and Use Taxes
2	Business Taxes
3	Gross Receipts Taxes
4	Excise Taxes
5	Connectivity Charges
6	Regulatory Charges
7	E-911 Charges
8	Utility User Taxes
9	Right of Way Fees
10	Communications Services Tax

Tax Categories	
Category ID	Name
11	Cable Regulatory Fees
12	Reserved
13	Value Added Taxes

8.8.38 Specifying Exemption Exempt Non-billable Flag

The Exempt non-billable flag indicates whether non-billable taxes should be included as candidates for exemption.

This is not required if a specific tax type is being exempted, but only for Category exemptions and wild-card exemptions.

Facilities Flag	
Value	Description
True	Include non-billable taxes as candidates for exemption.
False (Default)	Exclude non-billable taxes as candidates for exemption.

8.8.39 Specifying Exemption Exempt Non-level-exemptible Flag

The exempt non-level exemptible flag indicates whether taxes tagged as non-level exemptible should be included as candidates for exemption.

This is not required if a specific tax type is being exempted or if it is a category exemption, but only for tax type wild-card exemptions.

Facilities Flag	
Value	Description
True (Default)	Include non-level exemptible taxes as candidates for exemption.
False	Exclude non-level exemptible taxes as candidates for exemption.

8.8.40 Specifying Safe Harbor Overrides for Traffic Studies

The results of percentages from a traffic study can be applied by administering traffic study TAM overrides. The TAM values for Cellular, VoIP and Paging are adjusted to reflect the percentages in the traffic study.

Please contact communicationsupport@avalara.com in order to set the override at the account level versus transaction level.

1. Cellular Examples:

Original Cellular Safe Harbor: 37.1% Federal / 62.9% State											
State	City	Zip	Charge	Products	Tax Type	Level	Rate	TM	Tax	Charge	Exempt
NY	Manhattan	10001	100	Cellular/Access Charge	Fed USF Cellular	Federal	0.174	37.1	6.4554	100	62.9

Cellular Traffic Study Override: 15.0% Federal / 85.0% State											
State	City	Zip	Charge	Products	Tax Type	Level	Rate	TM	Tax	Charge	Exempt
NY	Manhattan	10001	100	Cellular/Access Charge	Fed USF Cellular	Federal	0.174	15	2.61	100	85

2. VoIP Examples:

Original VoIP Safe Harbor: 64.9% Federal / 35.1% State											
State	Zip	Charge	Products	Tax Type	Level	Rate	TM	Tax	Charge	Exempt	
CA	90001	100	VoIP/Access Charge	Universal Lifeline Telephone Service Charge (VoIP)	State	0.055	35.1	1.9305	100	64.9	
CA	90001	100	VoIP/Access Charge	CASF (VoIP)	State	0.00464	35.1	0.16286	100	64.9	
CA	90001	100	VoIP/Access Charge	CA Teleconnect Fund (VoIP)	State	0.0108	35.1	0.37908	100	64.9	
CA	90001	100	VoIP/Access Charge	CA High Cost Fund A (VoIP)	State	0.0035	35.1	0.12285	100	64.9	
CA	90001	100	VoIP/Access Charge	TRS (VoIP)	State	0.005	35.1	0.1755	100	64.9	
CA	90001	100	VoIP/Access Charge	E911 (VoIP)	State	0.0075	35.1	0.26325	100	64.9	
CA	90001	100	VoIP/Access Charge	FUSF (VoIP)	Federal	0.174	64.9	11.2926	100	35.1	
CA	90001	100	VoIP/Access Charge	FCC Regulatory Fee (VoIP)	Federal	0.00371	64.9	0.24078	100	35.1	

VoIP Traffic Study Override: 25.0% Federal / 75.0% State										
State	Zip	Charge	Products	Tax Type	Level	Rate	TM	Tax	Charge	Exempt
CA	90001	100	VoIP/Access Charge	Universal Lifeline Telephone Service Charge (VoIP)	State	0.055	75	4.125	100	25
CA	90001	100	VoIP/Access Charge	CASF (VoIP)	State	0.00464	75	0.348	100	25
CA	90001	100	VoIP/Access Charge	CA Teleconnect Fund (VoIP)	State	0.0108	75	0.81	100	25
CA	90001	100	VoIP/Access Charge	CA High Cost Fund A (VoIP)	State	0.0035	75	0.2625	100	25
CA	90001	100	VoIP/Access Charge	TRS (VoIP)	State	0.005	75	0.375	100	25
CA	90001	100	VoIP/Access Charge	E911 (VoIP)	State	0.0075	75	0.5625	100	25
CA	90001	100	VoIP/Access Charge	FUSF (VoIP)	Federal	0.174	25	4.35	100	75
CA	90001	100	VoIP/Access Charge	FCC Regulatory Fee (VoIP)	Federal	0.00371	25	0.09275	100	75

8.9 Zip Lookup Requests

8.9.1 Zip Lookup Input File

The columns in the Excel and CSV file formats are the same in each format. Column headers are the first row in each file which describe the data in that particular field or column.

Field	*Required	Value List	Reference
Request Type	R	ZipLookup	Specifying Request Type
Country State County Locality ZipCode ZipP4	OR		Specifying Jurisdiction Address
Best Match	D	True False (default)	Specifying Best Match Flag
Limit Results	D	Number (default is 100)	Specifying Limit Results Value
Key:{header}	O		Specifying Extended Optional Reporting Fields

*Required:

- R = Required
- OR = Only One Required (Remaining optional)
- SR = Strongly Recommended (Default, if applicable)
- O = Optional (No Default)
- D = Optional (Default, if applicable)

Notes:

- Spacing is ignored in a field name. For example, [Request Type] and [RequestType] would be considered identical.
- Matching will ignore additional fields or characters beyond the listed value. Example: [Country] and [Country] would be considered identical. [Zip] however would not be considered a valid column identifier, as it must be either [ZipCode] or [ZipP4] to distinguish which value applies.
- Column headers are required and must be included in Excel and CSV format.
- The key column should be used to tie input data to the results.

8.9.2 Zip Lookup Results

The following zip files would be produced if a file with the base name KML150117AA is uploaded.

8.9.2.1 KMLR150117AA.zip - Report Files

Zip Lookup Report Files	
File Name	Description
KML161015AA.csv	Request in comma delimited format.
KML161015AA_ziplookup.csv	Results in comma delimited format.
KML161015AA_conversion.rpt	Conversion report. Generated if input file is in Excel format. Convert excel to comma delimited.
KML161015AA_error.rpt	Processing error report. Produced if errors occur during processing. Report captures the specific error message and the input line that failed processing.
KML161015AA_summary.rpt	Processing summary report.

8.9.2.2 KMLE161015AA.zip - Status Files

Extended and Fixed Format Status Files	
File Name	Description
Read_err.sta	Reports problems encountered while reading the input file. Problems might relate to invalid transaction/service type pairings or an invalid input file.
KML161015AA_converter.sta	Applies to excel input files. If an error occurs during conversion from Excel to csv format, this file will be generated with the error message.
KML161015AA_batch.sta	Status from batch processor. Outputs column mappings and any informational, warning or error level messages.

8.9.3 Zip Lookup Specific Transaction Specifications

8.9.3.1 Specifying Best Match Flag

Best Match Flag	
Value	Description
True	Will attempt to locate the best match for the data provided
False (Default)	All data provided must match exactly to the values in the address file

By default, the Zip Lookup algorithm requires an exact match of all fields provided with the following considerations:

1. Punctuation in city names will be ignored
2. Whitespace will be ignored

For example, the city name **LAND O' LAKES** will match LAND O LAKES or LANDOLAKES as both the punctuation and spacing will be ignored for purposes of matching.

If Best Match is set to true, some limited variable search algorithms will be used to find the best match for the data provided.

Examples using Manhattan in New York are as follows:

1. Sample Request with one exact match

Request 1 - Match exact on Country, State, County, City and Zip Code

Request Type	Country	State	County	Locality	ZipCode	Best Match
ZipLookup	USA	NY	New York	Manhattan	10001	FALSE

Result

PCode	Country	State	County	City
2604100	USA	NY	NEW YORK	MANHATTAN

2. Sample Request with multiple exact matches

Request 1 – Match exact on Country, State, County and Zip Code

Request Type	Country	State	County	Locality	ZipCode	Best Match
ZipLookup	USA	NY	New York		10001	FALSE

Request 2 – Match exact on Country and Zip Code (Blank Country defaults to USA)

Request Type	Country	State	County	Locality	ZipCode	Best Match
ZipLookup					10001	FALSE

Result - Both match 5 addresses (All have same Country, State, County and Zip)

PCode	Country	State	County	City
2604100	USA	NY	NEW YORK	EMPIRE STATE
2604100	USA	NY	NEW YORK	GREELEY SQUARE
2604100	USA	NY	NEW YORK	ONE HUNDRED THIRTY EIGHTH
2604100	USA	NY	NEW YORK	MANHATTAN
2604100	USA	NY	NEW YORK	NEW YORK

3. Sample Request – Match exact on invalid address

Request 1 – Match exact on Country, State, County, City and Zip Code

Request Type	Country	State	County	Locality	ZipCode	Best Match
ZipLookup	USA	NY	Westchester	Manhattan	10001	FALSE

Result – No matches, not a valid address

PCode	Country	State	County	City

4. Sample Request – Best match on invalid address

Request 1 – Best match on Country, State, County, City and Zip Code

Request Type	Country	State	County	Locality	ZipCode	Best Match
ZipLookup	USA	NY	Westchester	Manhattan	10001	FALSE

Result – County was disregarded

PCode	Country	State	County	City
2604100	USA	NY	NEW YORK	MANHATTAN

8.9.3.2 Specifying Limit Results Value

The limit results field is used to limit the number of matches returned.

Limit Results	
Column Name	Description
Limit Results	Numeric : integer ≥ 0 <ul style="list-style-type: none">• Default = 100, Maximum Limit = 1000• If zero is entered as the value, the default limit will be used.• If the value entered is greater than the maximum, the maximum limit will be used.

8.10 Bridge Conference File

The Bridge Conferencing feature is currently in development at this time. Please refrain from using this feature as well as the proposed solutions and files until further notice.

9. Appendix A – Fixed Format: CDF

The CDF file format is currently available. Please reference the table provided below for additional details on this format.

CDF Client Input Data Specification							
Opt/Req	Sec	Data Description	Type	Len	Positions	Default	Note
R	J	Origination	N	10	0-9		Originating NPANXX if flag=N Originating PCode if flag=P Originating State code if flag=S (numeric value)
R	J	Origination Flag	A	1	10		Set to N if using NPANXX, P if using PCode, or S if using State code
R	J	Termination	N	10	11-20		Terminating NPANXX if flag=N Terminating PCode if flag=P Terminating State code if flag=S (numeric value)
R	J	Termination Flag	A	1	21		Set to N if using NPANXX, P if using PCode, or S if using State code
R	J	Service Address	N	10	22-31		Service (BTN) NPANXX if flag=N Service PCode if flag=P Service State code if flag=S (numeric value)
R	J	Service Address Flag	A	1	32		Set to N if using NPANXX, P if using PCode, or S if using State code
R	C	Customer Type	A	1	33	B	Business, Residential Customer, Industrial, or Senior Citizen
R	T	Invoice Date	N	8	34-41		Format "CCYYMMDD"

CDF Client Input Data Specification							
Opt/Req	Sec	Data Description	Type	Len	Positions	Default	Note
R	T	Taxable Amount Sign	A	1	42		Format "+", "-", "p" or "m"
R	T	Taxable Amount	N	11.5	43-53		Format "99999999999" Zero-Filled, 5 decimal places, no decimal point
R	T	Lines	N	6	54-59	0	6-character integer
R	T	Location	N	6	60-65	0	6-character integer
R	T/S	Transaction Type	A/N	6	66-71		See Table of Transaction Types and Service Types
R	T/S	Service Type	A/N	6	72-77		See Table of Transaction Types and Service Types
R	T	Client Resale Flag	A	1	78	S	Call subject to Sale or Resale
R	C	Inc-Code	A	1	79	I	Customer is Inside or Outside an incorporated city area
R	C	Fed. Exempt	A	1	80	Blank	Call is exempt from Federal taxes
R	C	State Exempt	A	1	81	Blank	Call is exempt from State taxes
R	C	County Exempt	A	1	82	Blank	Call is exempt from County taxes
R	C	Local Exempt	A	1	83	Blank	Call is exempt from Local taxes
O	C	Customer Number (Primary Output Key)	A/N	20	84-103		Defines primary Key for Client Summary Data
R	CO	Regulated / Unregulated Flag	A	1	104	R	Reseller is Regulated or Unregulated in the state of sale

CDF Client Input Data Specification							
Opt/Req	Sec	Data Description	Type	Len	Positions	Default	Note
R	T	Call Duration (in minutes)	N	11.1	105-115		Format "9999999999" Zero-Filled, 1 decimal place, no decimal point
R	T	Telecom Type	A	1	116	C	C – Calls (telcom), D-Debit Card Calls, P-Point of sale
R	C	service class indicator	A	1	117	D	Long Distance or Local primary (D or L)
O	C	Lifeline flag	A	1	118	Blank	L - lifeline customer (Blank or I)
R	CO	facilities-based flag	A	1	119	N	Facilities-based or Non Facilities-based (F or N)
R	CO	franchise flag	A	1	120	N	Franchise or Non-Franchise (F or N)
R	C	business class indicator	A	1	121	C	CLEC or ILEC (C or I)

10. Appendix B – AFC Error Codes

A list of AFC error codes and descriptions for each are provided in the table below.

AFC Error Code	Message/Description
0	Backend System Error. Error details will be included in the error message.
-11	JCode not found.
-12	PCode not found.
-13	Zip code not found.

AFC Error Code	Message/Description
-14	NPANXX not found.
-15	Address not found.
-16	County, State, Zip not found.
-17	Session not initialized.
-18	JCode database not open.
-19	PCode database not open.
-20	ZipCode database not open.
-21	NPANXX database not open.
-22	Address database not open.
-23	Jurisdiction not found.
-24	FIPS not found.
-25	FIPS (to PCode) cross-reference database not open.
-26	PCode (to FIPS) cross-reference database not open.
-27	Invalid transaction date.
-28	Invalid transaction/service pair.
-29	Log name not set.
-32	Transaction/service pair is not supported by the API call.
-34	Transaction/Service pair is not licensed for user.
-35	System error allocating memory for internal tables.
-36	Split for private line transaction if either < 0 or > 1.
-37	Insufficient charge supplied to cover taxes generated.
-38	Tax-on-tax exceeded maximum iterations.
-39	Custom log size exceeds max allowed size.
-40	Exclusion is invalid.
-41	Bridge conference data is invalid.

AFC Error Code	Message/Description
-42	Safe Harbor Type is invalid.
-43	Safe Harbor federal fraction is invalid.
-44	Total distinct tax items for bundled package exceeded.
-45	Total of fixed charges exceeds bundle charge.
-46	Transaction/Service pair not in bundle table.
-47	Bundle Transaction/Service pair has bad syntax.
-48	Cannot determine call type for International calls.