

HAIER

COLOR TELEVISION & DVD

SERVICE MANUAL

PART # TV-8888-41

HAIER AMERICA TRADING, LLC
www.haieramerica.com



Colour Television

SERVICE MANUAL

z



Haier model:
DTA-2198
Customer model:
TDCF2014S
TDC2014S

● FEATURES

- DVD-TV 21" COMBO
- AUTO TUNE/181 CHANNELS
- DVD/VCD/SVCD/CD/CD-R/CD-RW/JPEG/MP3 COMPATIBLE
- NTSC-M, CCD, V-CHIP+AV STEREO
- 96kHz/24 BITS AUDIO DAC
- FORMATO DE VIDEO 4:3PS, 4:3LB
- DOLBY AC-3 DECODE
- PANATAL LOCK
- MTS

CONTENTS

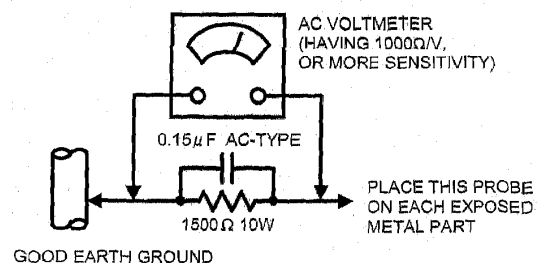
1. Safety precautions.....	3
2. TV block diagram.....	4
3. Replacement of memory IC.....	5
4. Service adjustment.....	5
5. ICs functional description.....	8
6. Test point waveform.....	10
7. All ICs voltages.....	10
8. Purity / convergence adjustment.....	11
9. DVD maintenance.....	13
10. List of Parts	14
11. Circuit diagram.....	Attached
12. Exploded view.....	Attached

1. SAFETY

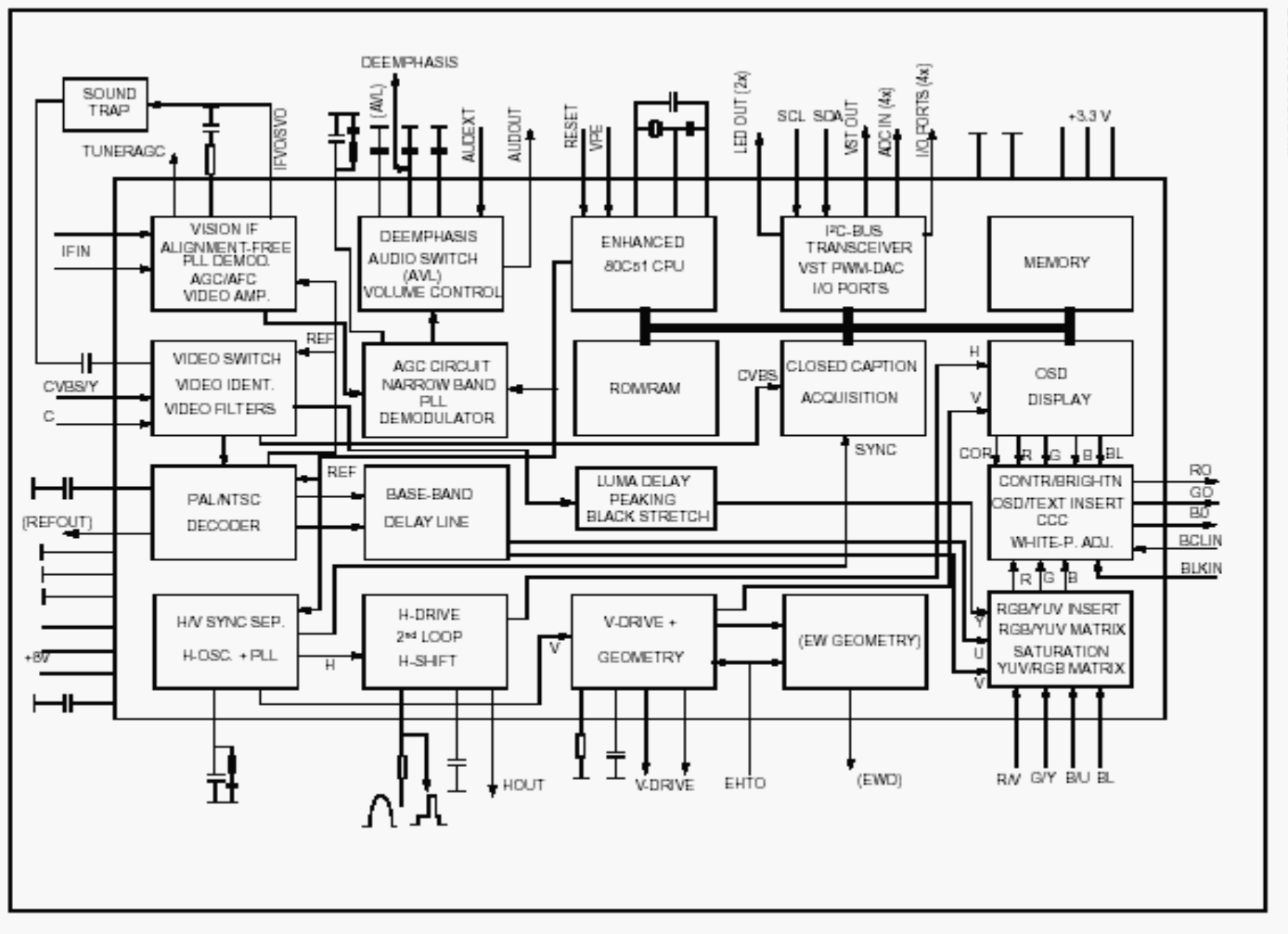
- The design of this product contains special hardware, many circuits and components especially for safety purposes. For continued protection, no changes should be made to the original design unless authorized in writing by the manufacturer. Replacement parts must be identical to those used in the original circuits. Service should be performed by qualified personnel only.
- Alterations of the design or circuitry of the products should not be made. Any design alterations or additions will void the manufacturer's warranty and will further relieve the manufacturer of responsibility for personal injury or property damage resulting therefrom.
- Many electrical and mechanical parts in the products have special safety-related characteristics. These characteristics are often not evident from visual inspection nor can the protection afforded by them necessarily be obtained by using replacement components rated for higher voltage, wattage, etc. Replacement parts which have these special safety characteristics are identified in the parts list of Service manual. Electrical components having such features are identified by shading on the schematics and by (!) on the parts list in Service manual. The use of a substitute replacement which does not have the same safety characteristics as the recommended replacement part shown in the parts list of Service manual may cause shock, fire, or other hazards
- Don't short between the LIVE side ground and ISOLATED (NEUTRAL) side ground or EARTH side ground when repairing.** Some model's power circuit is partly different in the GND. The difference of the GND is shown by the LIVE: (⚡) side GND, ISOLATED (NEUTRAL): (⊥) side GND and EARTH: (⊕) side GND. Don't short between the LIVE side GND and ISOLATED (NEUTRAL) side GND or EARTH side GND and never measure with a measuring apparatus (oscilloscope etc.) the LIVE side GND and ISOLATED (NEUTRAL) side GND or EARTH side GND at the same time. If above note will not be kept, a fuse or any parts will be broken.
- If any repair has been made to the chassis, it is recommended that the B1 setting should be checked or adjusted (See ADJUSTMENT OF B1 POWER SUPPLY).
- The high voltage applied to the picture tube must conform to that specified in Service manual. Excessive high voltage can cause an increase in X-Ray emission, arcing and possible component damage, therefore operation under excessive high voltage conditions should be kept to a minimum, or should be prevented. If severe arcing occurs, remove the AC power immediately and determine the cause by visual inspection (incorrect installation, cracked or melted high voltage harness, poor soldering, etc.). To maintain the proper minimum level of soft X-Ray emission, components in the high voltage circuitry including the picture tube must be the exact replacements or alternatives approved by the manufacturer of the complete product.
- Do not check high voltage by drawing an arc. Use a high voltage meter or a high voltage probe with a VTVM. Discharge the picture tube before attempting meter connection, by connecting a clip lead to the ground frame and connecting the other end of the lead through a 10kΩ 2W resistor to the anode button.
- When service is required, observe the original lead dress. Extra precaution should be given to assure correct lead dress in the high voltage circuit area. Where a short circuit has occurred, those components that indicate evidence of overheating should be replaced. Always use the manufacturer's replacement components.

PRECAUTIONS

- Isolation Check
(Safety for Electrical Shock Hazard)
After re-assembling the product, always perform an isolation check on the exposed metal parts of the cabinet (antenna terminals, video/audio input and output terminals, Control knobs, metal cabinet, screw heads, earphone jack, control shafts, etc.) to be sure the product is safe to operate without danger of electrical shock.
 - The surface of the TV screen is coated with a thin film which can easily be damaged. Be very careful with it when handle the TV. Should the TV screen become soiled, wipe it with a soft dry cloth. Never rub it forcefully. Never use any cleaner or detergent on it.
- (1) Dielectric Strength Test
The isolation between the AC primary circuit and all metal parts exposed to the user, particularly any exposed metal part having a return path to the chassis should withstand a voltage of 3000V AC (r.m.s.) for a period of one second. (...Withstand a voltage of 1100V AC (r.m.s.) to an appliance rated up to 120V, and 3000V AC (r.m.s.) to an appliance rated 200V or more, for a period of one second.) This method of test requires test equipment not generally found in the service trade.
- (2) Leakage Current Check
Plug the AC line cord directly into the AC outlet (do not use line isolation transformers during this check). Using a "Leakage Current Tester", measure the leakage current from each exposed metal part of the cabinet, particularly any exposed metal part having a return path to the chassis, to a known good earth ground (water pipe, etc.). Any leakage current must not exceed 0.5mA AC (r.m.s.). However, in tropical area, this must not exceed 0.2mA AC (r.m.s.).
- Alternate Check Method
Plug the AC line cord directly into the AC outlet (do not use a line isolation transformer during this check.). Use an AC voltmeter having 1000 ohms per volt or more sensitivity in the following manner. Connect a 1500Ω 10W resistor paralleled by a 0.15μF AC-type capacitor between an exposed metal part and a known good earth ground (water pipe, etc.). Measure the AC voltage across the resistor with the AC voltmeter. Move the resistor connection to each exposed metal part, particularly any exposed metal part having a return path to the chassis, and measure the AC voltage across the resistor. Now, reverse the plug in the AC outlet and repeat each measurement. Any voltage measured must not exceed 0.75V AC (r.m.s.). This corresponds to 0.5mA AC (r.m.s.). However, in tropical area, this must not exceed 0.3V AC (r.m.s.). This corresponds to 0.2mA AC (r.m.s.)



2. Block diagram TDA9377 PS/N2 series with mono intercarrier sound demodulator



BLOCK DIAGRAM

3. REPLACEMENT OF MEMORY IC

1. MEMORY IC.

This TV uses memory IC. In the memory IC are memorized data for correctly operating the video and deflection circuits.

2. PROCEDURE FOR REPLACING MEMORY IC

- (1) Power off
Switch the power off and unplug the power cord from AC outlet.
- (2) Replace IC
Be sure to use memory IC written with the initial data values.
- (3) Power On
Plug the power cord into the AC outlet and switch the power on.
- (4) Check and set SYSTEM default value:
 - 1) Press "MUTE" → "CALL" → "-\--" → "CALL" → "MUTE" buttons in sequence to enter into factory status.
 - 2) If the memory IC haven't been written with the initial data, press [Program+] / [Program-] to select item INIT and press [VOLUME+] / [VOLUME-] to start initialize memory IC.
 - 3) Check the setting value of the SYSTEM default value of Table below. If the value is different, select items by [Program+] / [Program-] keys and set value by [VOLUME+] / [VOLUME-] keys.
 - 4) Press "EXIT" button to return to the normal screen.

4. SERVICE ADJUSTMENT

Specific operation: use remote controller

Press "MUTE" → "CALL" → "-\--" → "CALL" → "MUTE" buttons in sequence to enter into factory mode.

Press [Program+] / [Program-] to select items and press [VOLUME+] / [VOLUME-] key, to make data adjustment of corresponding factory menus.

Press "EXIT" key to exit factory mode.

Focus adjustment

1. Receive a crosshatch signal.
2. While watching the screen, adjust the FOCUS VR on the FBT to make the vertical and horizontal lines as fine and sharp as possible.

Geometrical adjustment

Receive PAL standard complete pattern signal.

Adjustment steps :

- a) Adjust VSL, to the centre horizontal line just appears from half bottom shadow.
- b) Adjust VAM, to get 92% of vertical picture contents would be displayed on CRT.
- c) Adjust VSH, the centre horizontal line corresponds to CRT vertical centre.
- d) Adjust SCL, to the linearity of P card field is in proper condition.
- e) Adjust HSH, to get the picture horizontal centre correspond to CRT horizontal centre.

Receive NTSC signal and repeat above adjustment.

AGC Adjustment

Receive 60dB μ (1mV) VH colour bar pattern signal.

Select TOP item.

Adjust value, to noise reduce gradually and just disappeared point.

CRT cut off and white balance adjustment

- a) CRT cut off adjustment
 1. Select item VG2B, then adjust value to 32.
 2. PRESS "0" key, when the screen shows "VG2" adjust the SCREEN control on Fly back transformer to make the screen show alternating flashing characters of "INSIDE HIGH INSIDE LOW".
- b) White balance adjustment
 1. Receive a Black and White pattern.
 2. Adjust WRP, WRG, WRB items to get colour temperature 9300K \pm 3 JND.

Adjustable Items

Direct access key	Items	Description	Preset	Remark
"1"	5/6HSH	Horizontal shift	ON	A
"2"	5/6VSL	Vertical slop	21	A
	5/6VAM	Vertical amplitude	45	A
	5/6SCL	S-correction	20	A
	5/6VSH	Vertical shift	38	A
	5/6VOF	OSD Vertical offset	38	A
	HOF*	OSD Horizontal offset	20	A
"3"	RED	Black level offset R	32	A
	GRN	Black level offset G	32	A
	WPR	White point R	31	A
	WPG	White point G	31	A
	WPB	White point B	31	A
"4"	TOP	AGC Take-over point	20	A
	VOL	Volume	42	
	9860	Sub-volume of TDA9860/59	59	
	HDOL	Cathode drive level	5	
	AGC	IF AGC speed	1	
	VG2B	VG2 Brightness	42	
	IFO		31	
"5"	Picture preset 1			
	0CON	Listen: Contrast	0	A
	0BRI	Listen: Brightness	0	A
	0COL	Listen: Colour	50	A
	0SHP	Listen: Sharpness	50	A
	1CON	Soft: Contrast	45	A
	1BRI	Soft: Brightness	45	A
	1COL	Soft: Colour	50	A
	1SHP	Soft: Sharpness	50	A
"6"	Picture preset 2			
	2CON	Standard: Contrast	75	A
	2BRI	Standard: Brightness	50	A
	2COL	Standard: Colour	50	A
	2SHP	Standard: Sharpness	60	A
	3CON	Dynamic: Contrast	85	A
	3BRI	Dynamic: Brightness	60	A
	3COL	Dynamic: Colour	60	A
	3SHP	Dynamic: Sharpness	80	A

NOTE: THE ITEMS WITH REMARK "A" IS ADJUSTABLE DATA.

Optional data

1. OP1

Bit	Function	Description	Preset	Remark
Bit 7	RESERVE		0	EA
Bit 6	AV2	1=Enable	1	EA
Bit 5	Half Tone	Translucence OSD manual 1=Enable	1	EA
Bit 4	RGB	1=Enable (Can only be selected either RGB and DVD)	0	EA
Bit 3	DVD	1=Enable	1	EA
Bit 2	Comb filter	1=Enable	0	EA
Bit 1	SVHS	1=Enable	0	EA
Bit 0	AV1	1=Enable	1	EA

2. OP2

Bit	Function	Description	Preset	Remark
Bit 7	Ident sensitive PAL	1=21dB μ V 0=26dB μ V	0	EA
Bit 6	TILT	1=Enable	0	EA
Bit 5	OSO	1=Enable	1	EA
Bit 4	FSL	1=Enable	0	EA
Bit 3	RESERVE		1	EA
Bit 2	FMWS	1=Enable	1	EA
Bit 1	RESERVE		1	EA
Bit 0	AVL	1=Enable	1	EA

3. OP3

Bit	Function	Description	Preset	Remark
Bit 7	TDA9377	1=TDA9377 0=TDA9378	1	EA
Bit 6	16:9	1=Enable	0	EA
Bit 5	RESERVE		0	EA
Bit 4	RESERVE		0	EA
Bit 3	YPbPr	1=YPbPr 0=Yuv	1	EA
Bit 2	Blue/Black back	1=Blue Back 0=Black Back	1	EA
Bit 1	RESERVE		0	EA
Bit 0	Woofers	1=Enable	0	EA

4. OP4

Bit	Function	Description	Preset	Remark
Bit 7	RESERVE		0	EA
Bit 6	VCHIP	1=Enable	1	EA
Bit 5	RESERVE		0	EA
Bit 4	Soft program change	1=Enable	0	EA
Bit 3	RESERVE		0	EA
Bit 2	RESERVE		0	EA
Bit 1	RESERVE		0	EA
Bit 0	RESERVE		0	EA

5. OP5

Bit	Function	Description	Preset	Remark
Bit 7	AUTO CHARACTER	1= Enable	1	EA
Bit 6	FREQ	1= Enable	0	EA
Bit 5	AV AUDIO TRACK	1=Enable	0	EA
Bit 4	PAL	1=Enable	0	EA
Bit 3	Portuguese	1= Enable	0	EA
Bit 2	Spanish	1= Enable	1	EA
Bit 1	French	1=Enable With DVD select 1	0	EA
Bit 0	English	1=Enable	1	EA

6. OP6

Bit	Function	Description	Preset	Remark
Bit 7	RESERVE	1=Enable	0	EA
Bit 6	RESERVE	1=Enable	0	EA
Bit 5	SOFT CHANGE AV	1=Enable	0	EA
Bit 4	LISTEN	1=Enable	1	EA
Bit 3	INNER DVD	1=Enable	1	EA
Bit 2	ZOOM	1=Enable	0	EA
Bit 1	9860	1=Enable	0	EA
Bit 0	MEMU STYLE		1	EA

Note : Don't adjust any OPTION items, please inform the engineer about any change.

5. ICs functional description

1. N501 UOC TDA9377

SYMBOL	PIN	DESCRIPTION
STAND BY output.	1	In STAND BY mode, low level (Power OFF). For Power ON this pin will be high.
SCL	2	I ² C-bus clock line
SDA	3	I ² C-bus data line
TUNING	4	tuning Voltage (Vt) PWM output
KEY	5	Control keys input
SYSTEM	6	TV system control
VOL	7	Sound Volume control PWM output
MUTE	8	Sound mute output
VSSC/P	9	Digit ground for μ -controller core and periphery
CTL	10	DVD power control
STANDBY	11	STANDBY control
VSSA	12	Analog ground of digital ground of TV-processor
SECPLL	13	Internally connected
VP2	14	2 nd supply voltage TV-processor(+8V)
DECDIG	15	decoupling digital supply of TV-processor
PH2LF	16	Phase-2 filter
PH1LF	17	Phase-1 filter
GND3	18	Ground 3 for TV-processor
DECBG	19	Band gap decoupling
AVL/EWD	20	Automatic volume levelling
VDRB	21	Vertical drive B output
VDRA	22	Vertical drive A output
IFIN1	23	IF input 1
IFIN2	24	IF input 2
IREF	25	Reference current input
VSC	26	Vertical sawtooth capacitor
TUNER AGC	27	Tuner AGC output
AUDEEM/SIFIN1 *1	28	Audio deemphasize or SIF input
DECSDEM/SIFIN2	29	Decoupling sound demodulator
GND2	30	Ground 2 for TV processor
SNDPLL/SIFAGC *1	31	Narrow band PLL filter
AVL	32	Automatic Volume Levelling
HOUT	33	Horizontal output
FBISO	34	Flyback input/sandcastle output
AUDEXT	35	External audio output
EHTO	36	EHT/over voltage protection input
PLL IF	37	IF-PLL loop filter
IFVO/SVO	38	IF video output / selected CVBS output
VP1	39	supply voltage TV processor
CVBS INT	40	internal CVBS input
GND1	41	ground for TV processor
CVBS/Y	42	CVBS/SVHS(Y) input
CHROMA	43	SVHS (C) input
AUDOUT	44	Audio output
INSSW2	45	YUV insertion input
R2/VIN	46	R input / V (R-Y) input / PR input
G2/YIN	47	G input / Y input
B2/UIN	48	B input / U (B-Y) input / PB input
BCLIN	49	Beam current limiter input
BLKIN	50	Black current input
RO	51	Red output
GO	52	Green output
BO	53	Blue output
VDDA	54	Analog supply of Closed Caption decoder and digital supply of TV-processor (3.3 V)
VPE	55	Ground
VDDC	56	Digital supply to core (3.3 V)
OSCGND	57	Oscillator ground supply
XTALIN	58	Crystal oscillator input
XTALOUT	59	Crystal oscillator output

RESET	60	Ground
VDDP	61	Digital supply to periphery (+3.3 V)
P1.0/INT1	62	AV1 / AV2 mode Output.
P1.1/T0	63	AV /S-VHS mode Output.
P1.2/INT0	64	Remote control signal input.

Note

Pin	TV	SVHS	AV1	AV2
62	1	0	0	1
63	1	1	0	0

2. N902 24C08/PCF8598

PIN	Function
1	GND
2	GND
3	Upper resistance
4	GND
5	SDA data wire
6	SCL clock wire
7	GND
8	+5V Power

3. N601: Sound power amplify (AN7522N)

Symbol	PIN	Function	Symbol	PIN	Function
Vcc	1	Power supply	GND	7	ground
Out 1 (+)	2	Ch 1 output (+)	In 2	8	Ch 2 input
GND(out 1)	3	Ch 1Ground	VOL	9	Volume Control
Out 1 (-)	4	Ch 1 output (-)	Out 2 (-)	10	Ch 2 output (-)
Standby	5	Mute input	GND(out 2)	11	Ch 2 Ground
In 1	6	Ch 1 input	Out 2 (+)	12	Ch 2 output (+)

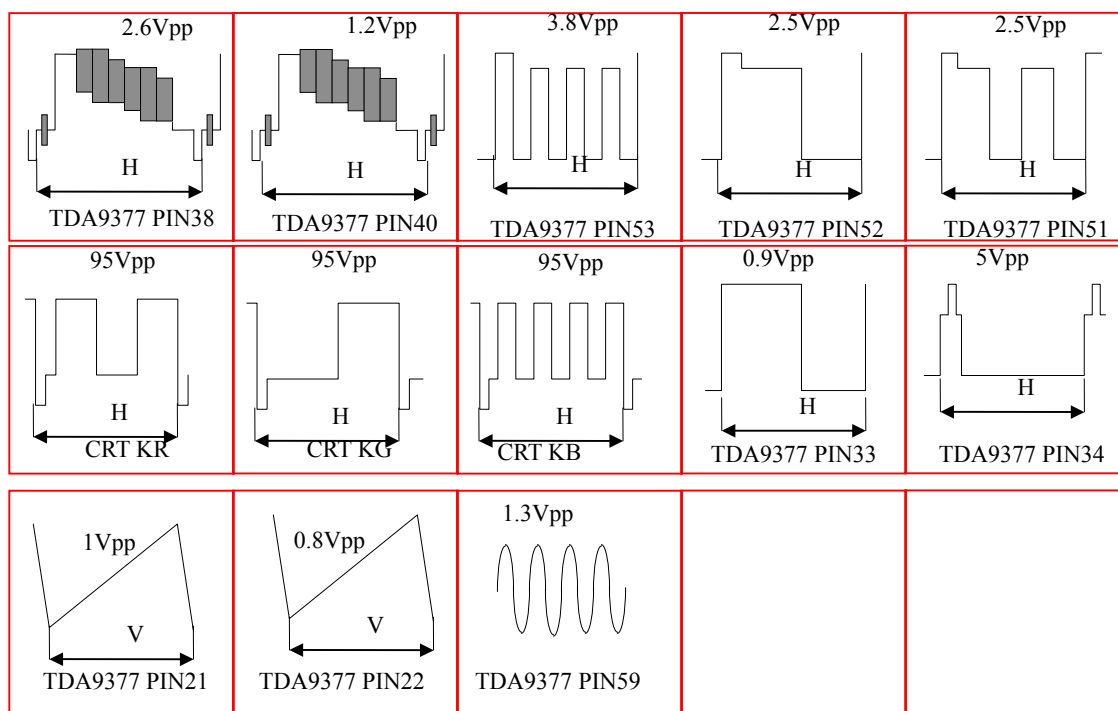
4. N301: Vertical output (TDA8357A)

Symbol	PIN	Function	Symbol	PIN	Function
INV IN	1	Input	PUMP UP	6	Pump up power
INV IN	2	Input	V OUT	7	Vertical output
Vcc	3	Pump up power	V PRO	8	Vertical protection
V OUT	4	Vertical output	V FEEDBACK	9	Vertical feedback
GND	5	Ground			

5. U101 : Tuner

PIN	Function	PIN	Function
1	AGC	7	+5V
2	vacant	8	vacant
3	Gnd	9	Vt 33V
4	SCL	10	Gnd
5	SDA	11	IF Out
6	+5V		

6. Test point Waveforms



7. IC voltages

TDA9377

PIN	1	2	3	4	5	6	7	8	9	10	11	12	13	14	15	16
V	0	3.8	3.6	3.3	3.5	4.4	5.1	1.8	0	0.18	0.17	0	2.3	8	5	3
PIN	17	18	19	20	21	22	23	24	25	26	27	28	29	30	31	32
V	4	0	4	0.5	0.7	0.8	1.9	1.9	3.9	3.8	1.6	3.2	2.3	0	2.3	0.2
PIN	33	34	35	36	37	38	39	40	41	42	43	44	45	46	47	48
V	0.5	0.3	0	1.7	2.4	3.4	8	3.9	0	3.3	0	3.6	1.4	2.5	2.5	2.5
PIN	49	50	51	52	53	54	55	56	57	58	59	60	61	62	63	64
V	1.9	5.0	2.4	2.4	2.4	3.1	0	3.2	0	1.8	1.7	0	3.2	5.1	3.3	5

TDA8357

PIN	1	2	3	4	5	6	7	8	9
V	0.8	0.7	16	6.9	0	43	7.2	0.3	7.2

AN 7522N

PIN	1	2	3	4	5	6	7	8	9	10	11	12	
V	10	4.4	0	4.4	2.75	1.4	0	1.4	0.35	4.4	0	4.4	

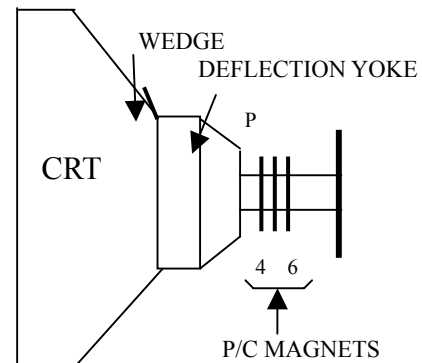
24C08/PCF8598

PIN	1	2	3	4	5	6	7	8
V	0	0	5.1	0	3.2	0	0	5.1

8. PURITY / CONVERGENCE ADJUSTMENT

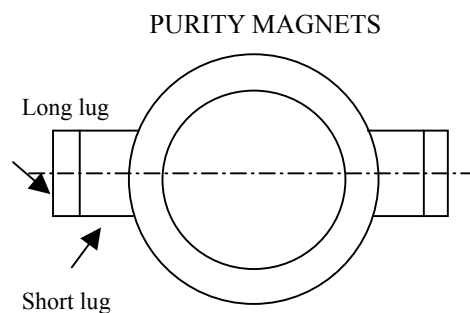
PURITY ADJUSTMENT

1. Demagnetize CRT with the demagnetizer.
2. Loosen the retainer screw of the deflection yoke.
3. Remove the wedges.
4. Input a green raster signal from the signal generator, and turn the screen to green raster.
5. Move the deflection yoke backward.
6. Bring the long lug of the purity magnets on the short lug and position them horizontally. (Fig2)
7. Adjust the gap between two lugs so that the GREEN RASTER will come into the centre of the screen. (Fig. 3)
8. Move the deflection yoke forward, and fix the position of the deflection yoke so that the whole screen will become green.
9. Insert the wedge to the top side of the deflection yoke so that it will not move.
10. Input a crosshatch signal.
11. Verify that the screen is horizontal.
12. Input red and blue raster signals, and make sure that purity is properly adjusted.



P: PURITY MAGNET
4: 4-POLES (convergence magnets)
6: 6-POLES (convergence magnets)

Fig. 1



Bring the long lug over the short lug and position them horizontally.

Fig. 2

(FRONT VIEW)

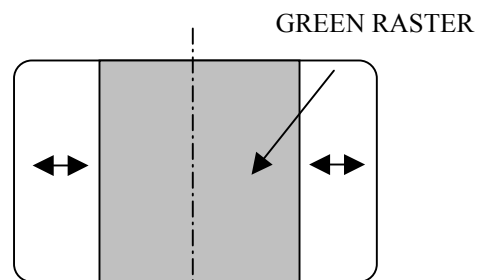
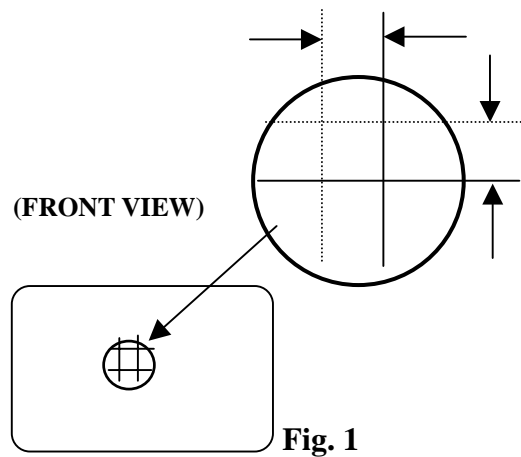


Fig. 3

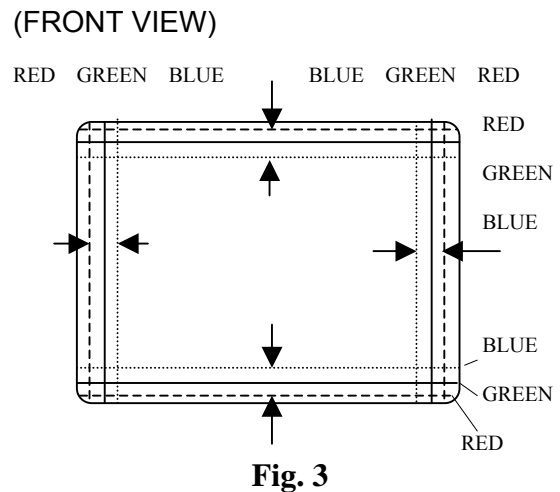
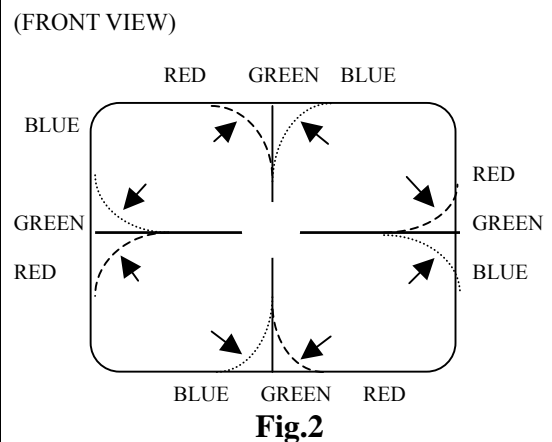
STATIC CONVERGENCE ADJUSTMENT

1. Input a crosshatch signal.
2. Using 4-pole convergence magnets overlap the red and blue lines in the center of the screen (Fig. 1) and turn them to magenta (red/blue).
3. Using 6-pole convergence magnets overlap the magenta (red/blue) and green lines in the center of the screen and turn them to white.
4. Repeat 2 and 3 above, and make the best convergence.



DYNAMIC CONVERGENCE ADJUSTMENT

1. Move the deflection yoke up and down and overlap lines in the periphery. (Fig. 2)
2. Move the deflection yoke left to right and overlap lines in the periphery. (Fig. 3)
3. Repeat 1 and 2 above, and make the best convergence.



After adjustment, fix the wedge at the original position.
Fasten the retainer screw of the deflection yoke.
Fix the 6 magnets with glue.

9. DVD Part: Introduction of MTK1379 maintenance

1. Under normal power supply conditions, the maintenance plan for MT1379 mono-chip is: first the reset circuit resets the MT1379, after the crystal oscillator circuit gave the clock signal to MT1379, MT1379 will start the initialization check for Flash、E²PROM、SDRAM, after everything is checked to be normal, it will start initialization check for 7Audio DAC, MT1336 and motor Driver.
2. If the all the a.m. parts are good, then MT1379 will send signal to motor Driver to drive the servo system , pick up then to generate DVD light for collection, tracing the main shaft to check if there is any disc, and confirm if it is CD format or DVD format disc. If the disc is in DVD format, the system will read the data from the disc directly; if it is in CD format MT1336 will drive the CD laser to send out CD light and read the data, the data then will be amplified through MT1336 and sent to MT1379 for data processing, released by MPEG and resolved into video data and audio data, then they will be returned to analog signals through VIDEO DAC、AUDIO DAC.

Decoder section

3. There is power supply, clock and reset, but the system does not work.
 - 1) Check if all the address wires required for FLASH are exist, and if they are in normal status, especially check if the A0~A15 of FLASH have normal signals, if there aren't, then inspect MT1379 to see if there is faulty soldering. If there are normal signals at A0~A15, check if the address data signal of MT1379 and SDRAM is normal. If it is normal, then check the signal at A16~A19 of MT1379; if there are also signals, then check the 8 video data wires; if there is no signal, then check the corresponding pins of MT1397 to see if there is any short circuit, break or faulty soldering.
 - 2) If all the a.m. conditions are good, but there is still no video signal output, then the filter circuit after MT1379 shall be checked.
4. System in normal operation, but the audio has no sound.
 - 1) Check if all the signals of DATA, MCLK, BCLK, LRCK and reset required by the Audio DAC are exist, if there is signal missing, then check the signal line between MT1379 and Audio DAC. If the line is connected properly, but there is no signal, then check if there is any welding problem at the corresponding pins of MT1379. If it is still OK, it is probably the problem on MT1379 itself.
 - 2) All the required signals are exist, while there is no audio output. Then you need to check the lower passing amplifying circuit and the MUTE circuit at the back of Audio DAC. Also check if there is any power supply to the Audio DAC.
 - 3) Check if the power supply voltage required for playing is at normal level.

Servo Section

5. After the LOGO of the machine shows normally, there is no OSD display. This problem mainly is caused by the abnormality between servo and MPEG, possible problems may be:
 - 1) T1336 and its surrounding circuits have problems.
 - 2) Servo part of MT1379 has problems.
6. OSD display is normal , while there is no action of servo part(feeding motor does not work, main shaft does no turn, possible fault status are:
 - 1) The corresponding signals giving by MT1379 to DMSO、FMSO are missing, the reason may be the problem of MT1379 or the communication between MT1379 and motor Driver.
 - 2) Not output from Motor Driver, the reason may be the problem on motor Driver or its corresponding circuit.
7. Servo part in good status, while there is no pick up action (no light, no focus)
 - 1) No light, check the power supply(power supply for pick up), or the light producing driving circuit to see if they are in normal status.
 - 2) No focus, check MT1379 to see if there is signal output from FOSO、TRSO.
Secondly, check motor driver to see if there is F+、F-、T+、T-signal output.
Thirdly, check the external corresponding circuit of the motor driver to see if there is any problem.
8. All the servo part has action, while it cannot read out the disc
 - 1) Check MT1336 if there is RF net picture output, if there isn't, then it must be the problem of MT1336 and external surrounding circuits, if there is output, then it might the problem of MT1369 and its surrounding circuits.
 - 2) There is RF signal , but not in normal status , then check MT1336 and surrounding circuits.
 - 3) Everything is normal, but the disc cannot be read out, check MT1369 and its surrounding circuit

10. List of Parts

LOCATION	DESCRIPTION		QTY
	FRONT CABINET ASS'Y	BCJ7008----Q	90806302 1
	LENS	MTAA7011AA--Q	90204520 1
	SCREW	SJ2824-87 ST3X10F	90600011 1
	KEYS	MTAA7012AA--Q	90204553 1
	SCREW	SJ2824-87 ST3X10F	90600011 3
	SCREW	SJ2838-87 ST3x12F	90600200 2
	SWITCH BUTTON	MTAA7013AA--Q	90204554 1
	SPRING	MTBH7004BC--Q	90100663 1
	SPEAKER	YDT0407-9AU-8W-8Ω	94008903 2
	SPEAKER WIRE		90401453 2
	SCREW	SJ2824-87 ST3X8F	90600012 8
	SCREW	SJ2824-87 ST4X12F	90600015 2
		D2006-12P-D2512-10P-TJ	
	WIRE ASS'Y	C3-2P-350	90401676 1
	FRONT AV CONNECTOR ASS'Y		90401336 1
	DVD STAND	MTAC7014AA--Q	90204556 1
	DVD SHIELD (UP)		90100709 1
	DVDSHIELD (DOWN)		90100710 1
	SCREW	SJ2824-87 ST3X12F	90600034 4
	DVD ASS'Y	DC005B	94006927 1
	BACK CABINET	MTFC7011AJ--Q	90204557 1
	SCREW	SJ2825-87 ST3X10F	90600037 1
	AV LABEL	69.6X71.4	90204538 1
	HIGH VOLTAGE SPACER	TEM101	90200008 1
	DVD DOOR	MTAH7008AA--Q	90204558 1
	POWER CORD CLIP	MTAH7005AA--Q	90205627 1
	SCREW	SJ2824-87 SJ4X16F	90600023 8
	SCREW	SJ2824-87 SJ4X16F	90600023 2
	TOP FOAM STAND	MTEE7013AB--Q	90503695 1
	BOTTOM FOAM STAND	MTEE7014AB--Q	90503696 1
	PLASTIC BRACKET	MTFC1014AJ--Q	90806490 1
	SCREW	SJ2825-87 ST3X10F	90600037 6
	UL POWER CORD	JPRVVZ202XDFQ	90402120 1
	040 PLASTIC CLIP	MTAJ1001AG--Q	90200038 1
	CRT ASS'Y		94005582 1
	21" CRT	A51JXS098X96	94000748 1
	GROUNDING WIRE	TJC1-1Y/2	90401291 1
	DEGUASSING COIL	HXC-54D	94500818 1
	NUT	M6	90600003 1
	PARKAGING ASS'Y		90804858 1
	RATING LABEL	MTFB5364CA--Q	90205788 1
	CARTON BOX		90505178 1
	BATTERY	5#	94000105 2
	PLASTIC BAG	FOR USER MANUAL	90204759 1
	REMOTE CONTROL		94009887 1
	PLASTIC BAG	FOR 14" COMPLETE SET	90500102 1
	PLASTIC BAG	FOR POWER CORD	90500018 1
	USER MANUAL		90504553 1

	TELESCOPIC MAST		94501185	1
	MAIN BAORD ASS'Y		94008724	1
N301B	HEAT SINK	HEAT SINK	90100450	1
N301C	IC	TDA8357J	94401409	1
N301D	SCREW	ST3X8F SJ2831-87	90600097	1
V401B	SCREW	ST3X8F SJ2831-87	90600097	1
V401A	HEAT SINK	QHS-30184A	90100017	1
V401	TRANSISTOR	2SD2499	94401401	1
N801A	HEAT SINK	QHS-30184A	90100661	1
N801C	IC	KA5Q0765RTH-YDTU	94401392	1
N801D	SCREW	ST3X8F SJ2831-87	90600097	1
N802C	IC	L7809CS	94400808	1
N802B	SCREW	ST3X8F SJ2831-87	90600097	1
N802A	HEAT SINK	QHS-30184A	90100017	1
N601B	IC	AN7522N	94401684	1
N601A	HEAT SINK	QHS-30184A	90100665	1
N601C	SCREW	ST3X8F SJ2831-87	90600097	2
N804B	IC	KA278R05	94401923	1
N804A	HEAT SINK	MTBH4070BC--Q	90100443	1
N804C	SCREW	ST3X8F SJ2831-87	90600097	2
VD806	IC	FFPF10U20STU	94401512	1
R625	CARBON FILM RESISTOR	RT13-1/6W-1K-J-----T	94100023	1
R110	METAL OXIDE RESISTOR	RY16S-1W-33-J-05-E-A	94102578	1
R407	METAL OXIDE RESISTOR	RY16S-1W-3.9K-J-12.5-E-A	94102667	1
R307	METAL OXIDE RESISTOR	RY17S-2W-390-J-05-E-A	94100097	1
R414	METAL OXIDE RESISTOR	RY17S-2W-1K-J-05-E-A	94102457	1
R413	METAL OXIDE RESISTOR	RY17S-2W-7.5K-J-05-E-A	94100098	1
R810	METAL OXIDE RESISTOR	RY17S-2W-18K-J-17.5-L-A	94102580	1
R802	METAL OXIDE RESISTOR	RY17S-2W-33K-J-05-E-A	94100101	1
R801	METAL OXIDE RESISTOR	RY17S-2W-33K-J-05-E-A	94100101	1
R501H	CARBON FILM RESISTOR	RT13-1/6W-47-J-----T	94100066	1
C501	CERAMIC CAPACITOR	CC1-B-500V-470PF-K-F05	94201264	1
C502	CERAMIC CAPACITOR	CC1-B-500V-470PF-K-F05	94201264	1
R502	CARBON FILM RESISTOR	RT13-1/6W-47-J-----T	94100066	1
R825	METAL OXIDE RESISTOR	RY17S-2W-47K-J-05-E-A	94102581	1
R818	METAL OXIDE RESISTOR	RY15S-1/2W-1.5K-J-----T	94100085	1
R503	CARBON FILM RESISTOR	RT13-1/6W-47-J-----T	94100066	1
R505	FUSE RESISTOR	RF10-2W-2.4Ω-J-A	94100704	1
R506	FUSE RESISTOR	RF10-2W-68-J-05-E-A	94100128	1
R820	FUSE RESISTOR	RF10-2W-68Ω-J-05-C	94100128	
R821	FUSE RESISTOR	RF10-2W-1-J-05-E-A	94100125	1
R824	FUSE RESISTOR	RF10-1/2W-1-J-05-E-A	94102583	1
R415	FUSE RESISTOR	RF10-1/2W-1-J-05-E-A	94102583	1
R302	FUSE RESISTOR	RF10-1/2W-10-J-05-E-A	94102668	1
R409	FUSE RESISTOR	RF10-1/2W-0.22-J-05-E-A	94102584	1
R306	FUSE RESISTOR	RF10-2W-0.68-J-05-E-A	94102586	1
R815	FUSE RESISTOR	RF10-2W-0.18-J-15-L-A	94102669	1
R416	FUSE RESISTOR	RF10-1/2W-68-J-12-L-A	94102591	1
DV801		TVR14561	94400806	1
P801	THERMISTOR	MZ73-14RM270V	94400046	1
RP801	THERMISTOR	MF72-2-5Ω±N	94400047	1
C248	CERAMIC CAPACITOR	CS1-F-63V-0.1μF-Z-F05	94201617	1
C419	CERAMIC CAPACITOR	CT1-B-2kV-681pF-K-07-A	94201373	1
C410	CERAMIC CAPACITOR	CT1-B-2kV-681pF-K-07-A	94201373	1
C807	CERAMIC CAPACITOR	CT1-B-2kV-561pF-K-07-A	94200067	1

C810	CERAMIC CAPACITOR	CT1-B-500V-560pF-K-F05	94201449	1
		CT81-400VAC-18B-2E4-33		
C823	CERAMIC CAPACITOR	2-M-10-C-A	94202412	1
C805	CAPACITOR	CT1-B-1kV-1000pF-K-07-A	94201071	1
C849	CAPACITOR	CL21X-63V-224-J-----F	94201463	1
C216	CAPACITOR	CL21X-63V-224-J-----F	94201463	1
C414	CAPACITOR	CL21X-400V-104-J-07-A-A	94200098	1
C227	CAPACITOR	CBB13-50V-104-J-07-A-A	94200099	1
C416	CAPACITOR	CBB21-400V-364-J-20-G-A	94200101	1
C409	CAPACITOR	CBB81-1.6KV-752-J-20-A-A	94200104	1
		MKT61-275V-104-M-15-G-		
C802A	CAPACITOR	A	94200105	1
C222	ELECT. CAPACITOR	CD110X-50V-1μF-M-F05	94200043	1
C236	ELECT. CAPACITOR	CD110X-16V-22μF-M-F05	94201043	1
		CD110X-25V-1000μF-M-05-		
C846	ELECT. CAPACITOR	A	94201011	1
		CD110X-25V-2200μF-M-05-		
C811	ELECT. CAPACITOR	A	94201319	1
		CD110X-25V-1000μF-M-05-		
C610	ELECT. CAPACITOR	A	94201011	1
C304	ELECT. CAPACITOR	CD263-100V-33uF-M-05-A	94202297	1
C418	ELECT. CAPACITOR	CD263-100V-33uF-M-05-A	94202297	1
		CD263-160V-100μF-M-07-		
C808	ELECT. CAPACITOR	A	94200736	1
		CD288H-250V-22uF±20%-0		
C411	ELECT. CAPACITOR	5-G-A	94201604	1
		CD293-400V-150μF-M-10-		
C801	ELECT. CAPACITOR	A	94201341	1
		CD110X-16V-1000μF-M-F0		
C852	ELECT. CAPACITOR	5	94200802	1
N201	IC	TDA9377PS/N2/A	94401967	1
N202	IC	M24C08(BR24C08)	94400636	1
N202	IC	PC817C	94400036	1
N703	IC	TC4052BP	94400138	1
N805	IC	KA78R12	94401924	1
N702	IC	HEF4053	94400503	1
X201	CRYTAL	JA12D-12MHZ-20PF	94600198	1
Z201	CERAMIC TRAP FILTER	XT4.5B	94600015	1
TU101	TUNER	ENV56DB4G3	94003734	1
SF101	SAW FILTER	D1510C	94600292	1
F801	FUSE	TSG-3.15A-250V	94000137	1
F801A	FUSE CLIP	FC503	90100021	1
F801B	FUSE CLIP	FC503	90100021	1
L401	LINEARITY COIL	LX034	94501053	1
L801	LINE FILTER	LCL-207	94500686	1
T444	FLYBACK TRANSFORMER	BSC25-0283G	94501054	1
T801	SWITCHING MODE TRANSFORMER	BCK-07-DE7	94501146	1
T401	HORIZONTAL TRANSFORMER	AA26-50001B	94500034	1
LW	INDUCTOR	TK115	94401063	1
V999	CRT SOCKET	GZS10-2-BD	94300007	1
CN801	CONNECTOR SOCKET	TJC1-2A	94300110	1
CN802	CONNECTOR SOCKET	TJC2-2A	94300063	1
CN601	CONNECTOR SOCKET	TJC3-2A	94300092	1
CN602	CONNECTOR SOCKET	TJC3-2A	94300092	1
CN502	CONNECTOR SOCKET	TJC3-3A	94300111	1

CN200	CONNECTOR SOCKET	TJC3-3A	94300012	1
CN211	CONNECTOR SOCKET	TJC3-3A	94300012	1
CN210	CONNECTOR SOCKET	TJC3-5A	94300104	1
CN503	CONNECTOR SOCKET	TJC3-5A	94300104	1
CN401	CONNECTOR SOCKET	TJC1-4A	94300307	1
CN809	CONNECTOR SOCKET	TJC3-5A	94300104	1
VD802	DIODE	T1R5GU41-12.5-M	94401993	1
VD803	DIODE	T1R5GU41-12.5-M	94401993	1
C259	DIODE	MTZJ5.1B-----T	94400617	1
CN501	WIRE ASS'Y	TJC3-5Y-750mm	90401725	1
CN502	WIRE ASS'Y	TJC3-3Y-750mm	90401724	1
GT501	CONNECTOR SOCKET	TJC1-1A	94300090	1
GT502	CONNECTOR SOCKET	TJC1-1A	94300090	1
C503	CERAMIC CAPACITOR	CC1-B-500V-470PF-K-F05	94201264	1
C705	CAPACITOR	CD71-50V-1uF-M-F05	94200994	1
		CD110X-25V-1000μF-M-05-		
C848	ELECT. CAPACITOR	A	94201011	1
CN702	WIRE ASS'Y		90401872	1
CN706	WIRE ASS'Y		90401670	1
CN703	CONNECTOR SOCKET	TJC3-8A	94300106	1
S	WIRE ASS'Y		90401672	1
CN810	WIRE ASS'Y	TJC3-4A	90400514	1
CN807-CN				
808	WIRE ASS'Y		90401671	1
G	WIRE ASS'Y	150mm	90400064	1
DVD	SCART SOCKET	CS-103	94300457	1
	MAIN PCB	91801280	91801280	1
R104	CARBON FILM RESISTOR	RT13-1/6W-10-J-----T	94100065	1
R752	CARBON FILM RESISTOR	RT13-1/6W-10-J-----T	94100065	1
R742	CARBON FILM RESISTOR	RT13-1/6W-10-J-----T	94100065	1
R216	CARBON FILM RESISTOR	RT13-1/6W-47-J-----T	94100066	1
R103	CARBON FILM RESISTOR	RT13-1/6W-100Ω-J-T52	94100017	1
R943	CARBON FILM RESISTOR	RT13-1/6W-47-J-----T	94100066	1
R250	CARBON FILM RESISTOR	RT13-1/6W-47-J-----T	94100066	1
R257	CARBON FILM RESISTOR	RT13-1/6W-47-J-----T	94100066	1
R258*	CARBON FILM RESISTOR	RT13-1/6W-75-J-----T	94100067	1
R265	CARBON FILM RESISTOR	RT13-1/6W-75-J-----T	94100067	1
R715	CARBON FILM RESISTOR	RT13-1/6W-75-J-----T	94100067	1
R735	CARBON FILM RESISTOR	RT13-1/6W-75-J-----T	94100067	1
R733	CARBON FILM RESISTOR	RT13-1/6W-75-J-----T	94100067	1
R734	CARBON FILM RESISTOR	RT13-1/6W-75-J-----T	94100067	1
RS03	CARBON FILM RESISTOR	RT13-1/6W-75-J-----T	94100067	1
R718	CARBON FILM RESISTOR	RT13-1/6W-75-J-----T	94100067	1
RS01	CARBON FILM RESISTOR	RT13-1/6W-75-J-----T	94100067	1
RS02	CARBON FILM RESISTOR	RT13-1/6W-100-J-----T	94100017	1
R208	CARBON FILM RESISTOR	RT13-1/6W-100-J-----T	94100017	1
R209	CARBON FILM RESISTOR	RT13-1/6W-100-J-----T	94100017	1
R210	CARBON FILM RESISTOR	RT13-1/6W-100-J-----T	94100017	1
R230	CARBON FILM RESISTOR	RT13-1/6W-100-J-----T	94100017	1
R235	CARBON FILM RESISTOR	RT13-1/6W-100-J-----T	94100017	1
R236	CARBON FILM RESISTOR	RT13-1/6W-100-J-----T	94100017	1
R237	CARBON FILM RESISTOR	RT13-1/6W-100-J-----T	94100017	1
R245	CARBON FILM RESISTOR	RT13-1/6W-100-J-----T	94100017	1
R252	CARBON FILM RESISTOR	RT13-1/6W-100-J-----T	94100017	1
R743	CARBON FILM RESISTOR	RT13-1/6W-100-J-----T	94100017	1

R744	CARBON FILM RESISTOR	RT13-1/6W-100-J-----T	94100017	1
R745	CARBON FILM RESISTOR	RT13-1/6W-100-J-----T	94100017	1
R740	CARBON FILM RESISTOR	RT13-1/6W-100-J-----T	94100017	1
R741	CARBON FILM RESISTOR	RT13-1/6W-100-J-----T	94100017	1
W235	CARBON FILM RESISTOR	RT13-1/6W-100-J-----T	94100017	1
W236	CARBON FILM RESISTOR	RT13-1/6W-100-J-----T	94100017	1
R280	CARBON FILM RESISTOR	RT13-1/6W-100-J-----T	94100017	1
R281	CARBON FILM RESISTOR	RT13-1/6W-100-J-----T	94100017	1
R251	CARBON FILM RESISTOR	RT13-1/6W-200-J-----T	94100133	1
R263	CARBON FILM RESISTOR	RT13-1/6W-200-J-----T	94100133	1
R843	CARBON FILM RESISTOR	RT13-1/6W-220-J-----T	94100019	1
R817A	CARBON FILM RESISTOR	RT13-1/6W-220-J-----T	94100019	1
R244	CARBON FILM RESISTOR	RT13-1/6W-390-J-----T	94100134	1
R255	CARBON FILM RESISTOR	RT13-1/6W-430-J-----T	94100069	1
R106	CARBON FILM RESISTOR	RT13-1/6W-470-J-----T	94100020	1
R256	CARBON FILM RESISTOR	RT13-1/6W-470-J-----T	94100020	1
R242	CARBON FILM RESISTOR	RT13-1/6W-1K-J-----T	94100023	1
R243	CARBON FILM RESISTOR	RT13-1/6W-1K-J-----T	94100023	1
R258	CARBON FILM RESISTOR	RT13-1/6W-1K-J-----T	94100023	1
R840	CARBON FILM RESISTOR	RT13-1/6W-510-J-----T	94100070	1
R227	CARBON FILM RESISTOR	RT13-1/6W-1K-J-----T	94100023	1
R841	CARBON FILM RESISTOR	RT13-1/6W-1K-J-----T	94100023	1
R310	CARBON FILM RESISTOR	RT13-1/6W-1.5K-J-----T	94101350	1
R861	CARBON FILM RESISTOR	RT13-1/6W-1.5K-J-----T	94100025	1
R102	CARBON FILM RESISTOR	RT13-1/6W-2.2KΩ-J-T52	94100026	1
R215	CARBON FILM RESISTOR	RT13-1/6W-3.3K-J-----T	94101328	1
R266	CARBON FILM RESISTOR	RT13-1/6W-3.3K-J-----T	94101328	1
R247	CARBON FILM RESISTOR	RT13-1/6W-3.3K-J-----T	94101328	1
R220	CARBON FILM RESISTOR	RT13-1/6W-3.3K-J-----T	94101328	1
R278	CARBON FILM RESISTOR	RT13-1/6W-3.3K-J-----T	94101328	1
R747	CARBON FILM RESISTOR	RT13-1/6W-3.3K-J-----T	94101328	1
R746	CARBON FILM RESISTOR	RT13-1/6W-3.3K-J-----T	94101328	1
R845	CARBON FILM RESISTOR	RT13-1/6W-3.3K-J-----T	94101328	1
R846	CARBON FILM RESISTOR	RT13-1/6W-3.3K-J-----T	94101328	1
R229	CARBON FILM RESISTOR	RT13-1/6W-3.9K-J-----T	94100071	1
R830	CARBON FILM RESISTOR	RT13-1/6W-3.3K-J-----T	94101328	1
R105	CARBON FILM RESISTOR	RT13-1/6W-3.3K-J-----T	94101328	1
R211	CARBON FILM RESISTOR	RT13-1/6W-4.7K-J-----T	94100029	1
R212	CARBON FILM RESISTOR	RT13-1/6W-4.7K-J-----T	94100029	1
R207	CARBON FILM RESISTOR	RT13-1/6W-4.7K-J-----T	94100029	1
R262*	CARBON FILM RESISTOR	RT13-1/6W-4.7K-J-----T	94100029	1
R241	CARBON FILM RESISTOR	RT13-1/6W-4.7K-J-----T	94100029	1
R623	CARBON FILM RESISTOR	RT13-1/6W-4.7K-J-----T	94100029	1
R605	CARBON FILM RESISTOR	RT13-1/6W-5.6KΩ-J-----T	94100721	1
R606	CARBON FILM RESISTOR	RT13-1/6W-5.6KΩ-J-----T	94100721	1
R610	CARBON FILM RESISTOR	RT13-1/6W-5.6KΩ-J-----T	94100721	1
R611	CARBON FILM RESISTOR	RT13-1/6W-5.6KΩ-J-----T	94100721	1
R213	CARBON FILM RESISTOR	RT13-1/6W-6.2K-J-----T	94100072	1
R848	CARBON FILM RESISTOR	RT13-1/6W-15K-J-----T	94100034	1
R847	CARBON FILM RESISTOR	RT13-1/6W-15K-J-----T	94100034	1
R248	CARBON FILM RESISTOR	RT13-1/6W-6.8K-J-----T	94100031	1
R246	CARBON FILM RESISTOR	RT13-1/6W-8.2K-J-----T	94100032	1
R860	CARBON FILM RESISTOR	RT13-1/6W-10K-J-----T	94100033	1
R862	CARBON FILM RESISTOR	RT13-1/6W-15K-J-----T	94100034	1
R218	CARBON FILM RESISTOR	RT13-1/6W-10K-J-----T	94100033	1
R214	CARBON FILM RESISTOR	RT13-1/6W-10K-J-----T	94100033	1

R218	CARBON FILM RESISTOR	RT13-1/6W-10K-J-----T	94100033	1
R831	CARBON FILM RESISTOR	RT13-1/6W-10K-J-----T	94100033	1
R620	CARBON FILM RESISTOR	RT13-1/6W-10K-J-----T	94100033	1
R622	CARBON FILM RESISTOR	RT13-1/6W-10K-J-----T	94100033	1
R738	CARBON FILM RESISTOR	RT13-1/6W-220-J-----T	94100019	1
R739	CARBON FILM RESISTOR	RT13-1/6W-220-J-----T	94100019	1
R849	CARBON FILM RESISTOR	RT13-1/6W-10K-J-----T	94100033	1
R833	CARBON FILM RESISTOR	RT13-1/6W-10K-J-----T	94100033	1
R832	CARBON FILM RESISTOR	RT13-1/6W-10K-J-----T	94100033	1
R850	CARBON FILM RESISTOR	RT13-1/6W-10K-J-----T	94100033	1
R238	CARBON FILM RESISTOR	RT13-1/6W-1K-J-----T	94100023	1
R311	CARBON FILM RESISTOR	RT13-1/6W-12K-J-----T	94100073	1
R219	CARBON FILM RESISTOR	RT13-1/6W-15K-J-----T	94100034	1
R226	CARBON FILM RESISTOR	RT13-1/6W-15K-J-----T	94100034	1
R249	CARBON FILM RESISTOR	RT13-1/6W-20K-J-----T	94100074	1
R274	CARBON FILM RESISTOR	RT13-1/6W-22K-J-----T	94100779	1
R276	CARBON FILM RESISTOR	RT13-1/6W-27K-J-----T	94100780	1
W610	CARBON FILM RESISTOR	RT13-1/6W-56K-J-----T	94100038	1
R275	CARBON FILM RESISTOR	RT13-1/6W-270K-J-----T	94100943	1
R273	CARBON FILM RESISTOR	RT13-1/6W-33K-J-----T	94100036	1
R621	CARBON FILM RESISTOR	RT13-1/6W-33K-J-----T	94100036	1
R851	CARBON FILM RESISTOR	RT13-1/6W-33K-J-----T	94100036	1
R233	CARBON FILM RESISTOR	RT13-1/6W-36KΩ-J	94100767	1
R261	CARBON FILM RESISTOR	RT13-1/6W-68K-J-----T	94100039	1
R277	CARBON FILM RESISTOR	RT13-1/6W-100K-J-----T	94100077	1
R303	CARBON FILM RESISTOR	RT13-1/6W-100K-J-----T	94100077	1
R314	CARBON FILM RESISTOR	RT13-1/6W-270K-J-----T	94100943	1
R407	METAL OXIDE RESISTOR	RY15S-1/2W-0.39-J-----T	94100079	1
R408	METAL OXIDE RESISTOR	RY15S-1/2W-33-J-----T	94100080	1
R403	METAL OXIDE RESISTOR	RY15S-1/2W-270-J-----T	94100083	1
R406	METAL OXIDE RESISTOR	RY15S-1/2W-330-J-----T	94102592	1
R809	METAL OXIDE RESISTOR	RY15S-1/2W-39K-J-----T	94102161	1
R822	METAL OXIDE RESISTOR	RY15S-1/2W-470K-J-----T	94100090	1
R823	METAL OXIDE RESISTOR	RY15S-1/2W-470K-J-----T	94100090	1
R807	RESISTOR	RS11-1/2W-3.3M-K-----T	94100103	1
RX801	RESISTOR	RS11-1/2W-3.3M-K-----T	94100103	1
R260	METAL FILM RESISTOR	RJ13-1/6W-9.1K-J-----T	94100106	1
R262	METAL FILM RESISTOR	RJ13-1/6W-9.1K-J-----T	94100106	1
R259	METAL FILM RESISTOR	RJ13-1/6W-100K-J-----T	94102210	1
R228	METAL FILM RESISTOR	RJ13-1/6W-39K-G-----T	94101159	1
R312	METAL FILM RESISTOR	RJ15X-1/2W-2.2KΩ-F-T52	94102527	1
R313	METAL FILM RESISTOR	RJ15X-1/2W-2.2KΩ-F-T52	94102527	1
R308	METAL FILM RESISTOR	RJ15S-1/2W-1.5-F-----T	94101353	1
R305	METAL FILM RESISTOR	RJ15S-1/2W-1.3-F-----T	94102593	1
R803	METAL FILM RESISTOR	RJ15S-1/2W-390Ω±1%-----T	94102526	1
R805	METAL FILM RESISTOR	RJ15S-1/2W-600-J-----T	94102162	1
R819	METAL FILM RESISTOR	RJ15S-1/2W-1K-F-----T52	94101354	1
R420	METAL FILM RESISTOR	RJ15S-1/2W-232K-F-----T	94102851	1
R816	METAL FILM RESISTOR	RJ15S-1/2W-123K-F-----T	94102595	1
R817	METAL FILM RESISTOR	RJ15S-1/2W-2.49K-F-J	94101355	1
C417	CERAMIC CAPACITOR	CT1-B-500V-330pF-K-F05	94202282	1
C403	CERAMIC CAPACITOR	CT1-B-500V-470pF-K-F05	94201264	1
C402	CERAMIC CAPACITOR	CT1-B-500V-560pF-K-F05	94201449	1
C847	CERAMIC CAPACITOR	CT1-B-500V-560pF-K-F05	94201449	1
C845	CERAMIC CAPACITOR	CT1-B-500V-560pF-K-F05	94201449	1

C239	CERAMIC CAPACITOR	CC1-CH-63V-33pF-J-F05	94201124	1
C240	CERAMIC CAPACITOR	CC1-CH-63V-33pF-J-F05	94201124	1
C208	CERAMIC CAPACITOR	CC1-CH-63V-56pF-J-F05	94201228	1
C209	CERAMIC CAPACITOR	CC1-CH-63V-56pF-J-F05	94201228	1
C804	CERAMIC CAPACITOR	CT1-B-63V-3900PF-K-F05	94202277	1
C218	CERAMIC CAPACITOR	CT1-B-63V-2200pF-K-F05	94200760	1
C249	CERAMIC CAPACITOR	CC1-CH-63V-150PF-J-F05	94200715	1
C232	CERAMIC CAPACITOR	CC1-CH-63V-330PF-J-F05	94202373	1
C231	CERAMIC CAPACITOR	CT1-B-63V-1000pF-K-F05	94200981	1
C234	CERAMIC CAPACITOR	CT1-B-63V-1000pF-K-F05	94200981	1
C110	CERAMIC CAPACITOR	CT1-B-63V-1000pF-K-F05	94200981	1
C229	CERAMIC CAPACITOR	CT1-B-63V-3300PF-K-F05	94201178	1
C221	CERAMIC CAPACITOR	CT1-B-63V-4700PF-K-F05	94201039	1
C603	CERAMIC CAPACITOR	CT1-B-63V-4700PF-K-F05	94201039	1
C611	CERAMIC CAPACITOR	CT1-B-63V-4700PF-K-F05	94201039	1
		CT1-2F4-63V-0.01μF-Z-----		
C111	CERAMIC CAPACITOR	F	94201040	1
C207	CERAMIC CAPACITOR	CT1-B-63V-0.01μF-K-F05	94201040	1
C225	CERAMIC CAPACITOR	CT1-B-63V-0.01μF-K-F05	94201040	1
C226	CERAMIC CAPACITOR	CT1-B-63V-0.01μF-K-F05	94201040	1
C228	CERAMIC CAPACITOR	CT1-F-63V-0.022μF-Z-F05	94201448	1
C254	CERAMIC CAPACITOR	CT1-F-63V-0.022μF-Z-F05	94201448	1
C101	CERAMIC CAPACITOR	CS1-F-63V-0.1μF-Z-F05	94201617	1
C202	CERAMIC CAPACITOR	CS1-F-63V-0.1μF-Z-F05	94201617	1
C220	CERAMIC CAPACITOR	CS1-F-63V-0.1μF-Z-F05	94201617	1
C223	CERAMIC CAPACITOR	CS1-F-63V-0.1μF-Z-F05	94201617	1
C237	CERAMIC CAPACITOR	CS1-F-63V-0.1μF-Z-F05	94201617	1
C242	CERAMIC CAPACITOR	CS1-F-63V-0.1μF-Z-F05	94201617	1
C243	CERAMIC CAPACITOR	CS1-F-63V-0.1μF-Z-F05	94201617	1
C244	CERAMIC CAPACITOR	CS1-F-63V-0.1μF-Z-F05	94201617	1
C245	CERAMIC CAPACITOR	CS1-F-63V-0.1μF-Z-F05	94201617	1
C256	CERAMIC CAPACITOR	CS1-F-63V-0.1μF-Z-F05	94201617	1
C306	CAPACITOR	CL11-63V-0.047μF-J-F05	94201458	1
CS01	CAPACITOR	CL11-63V-1000pF-J-F05	94201459	1
C803	CAPACITOR	CL11-63V-0.047μF-J-F05	94201458	1
C217	CAPACITOR	CL21X-63V-224-J-----F	94201463	1
C850	CAPACITOR	CL21X-63V-224-J-----F	94201463	1
C725	CAPACITOR	CD71-50V-1uF-M-F05	94200994	1
C247	ELECT. CAPACITOR	CD71-50V-1uF-M-F05	94200994	1
C253	ELECT. CAPACITOR	CD71-50V-1uF-M-F05	94200994	1
C401	CAPACITOR	CL21X-100V-103-J-----F	94200095	1
C413	CAPACITOR	CL23B-400V-472-J-----F	94200097	1
C814	CAPACITOR	CL21X-63V-104-J-----F	94201462	1
C853	CAPACITOR	CL21X-63V-104-J-----F	94201462	1
C851	CAPACITOR	CL21X-63V-104-J-----F	94201462	1
C722	ELECT. CAPACITOR	CD71-50V-1uF-M-F05	94200994	1
C727	ELECT. CAPACITOR	CD71-50V-1uF-M-F05	94200994	1
C706	ELECT. CAPACITOR	CD71-50V-1uF-M-F05	94200994	1
C233	ELECT. CAPACITOR	CD110X-50V-4.7μF-M-F05	94200751	1
C230	ELECT. CAPACITOR	CD110X-16V-10μF-M-F05	94200008	1
C246	ELECT. CAPACITOR	CD110X-16V-10μF-M-F05	94200008	1
C250	ELECT. CAPACITOR	CD110X-16V-10μF-M-F05	94200008	1
C842	ELECT. CAPACITOR	CD110X-16V-10μF-M-F05	94200008	1
C107	ELECT. CAPACITOR	CD110X-16V-10μF-M-F05	94200008	1
C108	ELECT. CAPACITOR	CD110X-16V-47μF-M-F05	94200988	1
C252	ELECT. CAPACITOR	CD110X-16V-47μF-M-F05	94200988	1

C257	ELECT. CAPACITOR	CD110X-16V-47μF-M-F05	94200988	1
C620	ELECT. CAPACITOR	CD110X-16V-100μF-M-F05	94200747	1
C829	ELECT. CAPACITOR	CD110X-16V-100μF-M-F05	94200747	1
C819	ELECT. CAPACITOR	CD110X-16V-100μF-M-F05	94200747	1
C841	ELECT. CAPACITOR	CD110X-16V-100μF-M-F05	94200747	1
C922	ELECT. CAPACITOR	D110X-16V-100μF-M-F05	94200747	1
C219	ELECT. CAPACITOR	CD110X-16V-100μF-M-F05	94200747	1
C854	ELECT. CAPACITOR	CD110X-16V-100μF-M-F05	94200747	1
C241	ELECT. CAPACITOR	CD110X-16V-100μF-M-F05	94200747	1
C255	ELECT. CAPACITOR	CD110X-16V-100μF-M-F05	94200747	1
C408	ELECT. CAPACITOR	CD110X-25V-47μF-M-F05	94201113	1
C303	ELECT. CAPACITOR	CD263-35V-100uF-M-F05	94200746	1
C102	ELECT. CAPACITOR	CD110X-25V-220μF-M-F05	94200550	1
C820	ELECT. CAPACITOR	CD110X-25V-220μF-M-F05	94200550	1
C238	ELECT. CAPACITOR	CD110X-50V-1μF-M-F05	94200043	1
C750	ELECT. CAPACITOR	CD110X-50V-1μF-M-F05	94200043	1
C621	ELECT. CAPACITOR	CD110X-50V-1μF-M-F05	94200043	1
C740	ELECT. CAPACITOR	CD110X-50V-1μF-M-F05	94200043	1
C224	ELECT. CAPACITOR	CD110X-50V-2.2μF-M-F05	94200044	1
C258	ELECT. CAPACITOR	CD110X-50V-2.2μF-M-F05	94200044	1
C201	ELECT. CAPACITOR	CD110X-50V-10μF-M-F05	94200046	1
C802	ELECT. CAPACITOR	CD110X-50V-47μF-M-F05	94200858	1
C404	ELECT. CAPACITOR	CD263-25V-470uF-M-F05	94200729	1
C415	ELECT. CAPACITOR	CD110-160V-1uF-M-F	94200993	1
C604	ELECT. CAPACITOR	CD71-50V-1uF-M-F05	94200994	1
C612	ELECT. CAPACITOR	CD71-50V-1uF-M-F05	94200994	1
L210	INDUCTOR	LGA0203-5R6-K-----T	94500020	1
L101	INDUCTOR	LGA0203-1μH-K-T52	94500450	1
L102	INDUCTOR	LGA0203-100-K-----T	94500021	1
L202	INDUCTOR	LGA0203-100-K-----T	94500021	1
L206	INDUCTOR	LGA0203-100-K-----T	94500021	1
L207	INDUCTOR	LGA0203-100-K-----T	94500021	1
L208	INDUCTOR	LGA0203-100-K-----T	94500021	1
L306	INDUCTOR	LGA0305-10uH-J-T52	94500264	1
L402	INDUCTOR	LB3.5*5-2-----F	94500027	1
L804	INDUCTOR	LB3.5*6-3-----T	94500028	1
DZ831	DIODE	1N4148-----T	94400049	1
VD201	DIODE	1N4148-----T	94400049	1
VD202	DIODE	1N4148-----T	94400049	1
VD809	DIODE	1N4148-----T	94400049	1
VD816	DIODE	1N4148-----T	94400049	1
VD817	DIODE	1N4148-----T	94400049	1
VD620	DIODE	1N4148-----T	94400049	1
VD217	DIODE	1N4148-----T	94400049	1
VD401	DIODE	1N4004-T52	94400473	1
VD402	DIODE	1N4004-T52	94400473	1
L209	DIODE	1N4004-T52	94400473	1
VD804	DIODE	TB1206-----T	94400052	1
VD403	DIODE	TC2406-----T	94400053	1
VD406	DIODE	T1R5GU41-----T	94400055	1
VD404	DIODE	T1R5GU41-----T	94400055	1
VD805	DIODE	T1R5GU41-----T	94400055	1

VD405	DIODE	TTVR10G-----T	94400056	1
VD810	DIODE	TERB4304-----T	94400059	1
DZ808	DIODE	MTZJ3.9B-----T	94400615	1
DZ205	DIODE	MTZJ4.7B-----T	94400616	1
DZ102	DIODE	MTZJ5.1B-----T	94400617	1
DZ402	DIODE	MTZJ5.1B-----T	94400617	1
DZ802	DIODE	MTZJ5.1B-----T	94400617	1
DZ101	DIODE	MTZJ9.1B-----T	94400493	1
DZ701	DIODE	MTZJ9.1B-----T	94400493	1
DZ702	DIODE	MTZJ9.1B-----T	94400493	1
DZ703	DIODE	MTZJ9.1B-----T	94400493	1
DZ807	DIODE	MTZJ9.1B-----T	94400493	1
VD811	DIODE	TRM11C-----T	94400453	1
VD812	DIODE	TRM11C-----T	94400453	1
VD813	DIODE	TRM11C-----T	94400453	1
VD814	DIODE	TRM11C-----T	94400453	1
DZ303	DIODE	MTZJ15C-----T	94400372	1
DZ301	DIODE	MTZJ22A-----T	94400068	1
		TRANSISTOR2SC2216(O)		
V101	TRANSISTOR	-05-D-A	94400405	1
V620	TRANSISTOR	KSA539-YTA-----F	94400203	1
V622	TRANSISTOR	KSA539-YTA-----F	94400203	1
V402	TRANSISTOR	KSC2331-YTA-----F	94400204	1
V206	TRANSISTOR	KSC815-YTA-----F	94400192	1
V208	TRANSISTOR	KSC815-YTA-----F	94400192	1
V212	TRANSISTOR	KSC815-YTA-----F	94400192	1
V213	TRANSISTOR	KSC815-YTA-----F	94400192	1
V621	TRANSISTOR	KSC815-YTA-----F	94400192	1
V801	TRANSISTOR	KSC815-YTA-----F	94400192	1
V802	TRANSISTOR	KSC815-YTA-----F	94400192	1
V803	TRANSISTOR	KSC815-YTA-----F	94400192	1
V804	TRANSISTOR	KSC815-YTA-----F	94400192	1
V806	TRANSISTOR	KSC815-YTA-----F	94400192	1
V807	TRANSISTOR	KSC815-YTA-----F	94400192	1
V805	TRANSISTOR	2SB764E	94401676	1
DZ201	IC	KA33VTA-----F	94400201	1
DZ803	IC	KA431AZTA-----F	94400200	1
R511	METAL OXIDE RESISTOR	RY17-2W-18KΩ-J-20-D	94102168	1
R512	CARBON FILM RESISTOR	RT13-1/6W-220-J-----T	94100019	1
R513	CARBON FILM RESISTOR	RT13-1/6W-390-J-----T	94100019	1
R514	RESISTOR	RS11-1/2W-1.8K-K-----T	94100102	1
R516	CARBON FILM RESISTOR	RT13-1/6W-270-J-----T	94100795	1
R521	METAL OXIDE RESISTOR	RY17-2W-18KΩ-J-20-D	94102168	1
R522	CARBON FILM RESISTOR	RT13-1/6W-220-J-----T	94100019	1
R523	CARBON FILM RESISTOR	RT13-1/6W-390-J-----T	94100134	1
R524	RESISTOR	RS11-1/2W-1.8K-K-----T	94100102	1
C508	ELECT. CAPACITOR	CD110X-250V-10μF-M-F05	94200728	1
C509	CERAMIC CAPACITOR	CD110X-250V-4.7μF-M-F05	94200727	1
VD501	DIODE	1N4148-----T	94400049	1
VD503	DIODE	1N4148-----T	94400049	1
VD507	DIODE	MTZJ8.2B--T	94400621	1
VD505	DIODE	1SS133T-72-----T	94400106	1
VD502	DIODE	1SS133T-72-----T	94400106	1
VD504	DIODE	1SS133T-72-----T	94400106	1
V511	TRANSISTOR	BF420	94400578	1
V521	TRANSISTOR	BF420	94400578	1

V531	TRANSISTOR	BF420	94400578	1
V513	TRANSISTOR	BF420	94400578	1
V523	TRANSISTOR	BF420	94400578	1
V533	TRANSISTOR	BF420	94400578	1
C510	CERAMIC CAPACITOR	CT1-B-2KV-1000PF-K-07-A	94200971	1
C511	CERAMIC CAPACITOR	CT1-B-63V-1000pF-K-F05	94200981	1
R526	CARBON FILM RESISTOR	RT13-1/6W-270-J-----T	94100795	1
R527	METAL OXIDE RESISTOR	RY17S-2W-33K-J-05-E-A	94100101	1
R531	METAL OXIDE RESISTOR	RY17-2W-18KΩ-J-20-D	94102168	1
R806	RESISTOR	RS11-1/2W-3.3M-K-----T	94100103	1
R532	CARBON FILM RESISTOR	RT13-1/6W-220-J-----T	94100019	1
R533	CARBON FILM RESISTOR	RT13-1/6W-390-J-----T	94100134	1
R534	RESISTOR	RS11-1/2W-1.8K-K-----T	94100102	1
R536	CARBON FILM RESISTOR	RT13-1/6W-270-J-----T	94100795	1
R550	METAL OXIDE RESISTOR	RY15S-1/2W-10M-J-----T	94100091	1
V512	TRANSISTOR	BF421	94400577	1
V522	TRANSISTOR	BF421	94400577	1
V532	TRANSISTOR	BF421	94400577	1
CC2	COAXIAL		94300460	1
CC1	WIRE ASS'Y		90401735	1
	COAXIAL PCB		91801448	1
	DVD INPUT PCB	0091800828V1.0	91800828	1
R001	CARBON FILM RESISTOR	RT13-1/6W-120-J-----T	94100942	1
R002	CARBON FILM RESISTOR	RT13-1/6W-200-J-----T	94100133	1
R003	CARBON FILM RESISTOR	RT13-1/6W-100-J-----T	94100017	1
C001	ELECT. CAPACITOR	CD110-16V-10uF±20%-----F	94200008	1
C002	ELECT. CAPACITOR	CD110-16V-10uF±20%-----F	94200008	1
C003	ELECT. CAPACITOR	CD110-16V-10uF±20%-----F	94200008	1
CN001	CONNECTOR SOCKET	TJC3-4AW	94300283	1
DVD	AV CONNECTOR SOCKET	AV9-3B04	94300393	1
	CONTROL BOARD ASS'Y		94009500	1
LP01	LED	TOL-30mRGdEHa	94401957	1
A1001	REMOTE RECEIVER	HS0038A 进口	94000136	1
CNT08	AV CONNECTOR SOCKET	AV3-B03	94300018	1
TV/AV	TACT SWITCH	K66T-1B-BL-6.5	94000480	1
MENU	TACT SWITCH	K66T-1B-BL-6.5	94000480	1
V-	TACT SWITCH	K66T-1B-BL-6.5	94000480	1
V+	TACT SWITCH	K66T-1B-BL-6.5	94000480	1
P-	TACT SWITCH	K66T-1B-BL-6.5	94000480	1
P+	TACT SWITCH	K66T-1B-BL-6.5	94000480	1
OPEN/CLO				
SE	TACT SWITCH	K66T-1B-BL-6.5	94000480	1
PLAY	TACT SWITCH	K66T-1B-BL-6.5	94000480	1
STOP	TACT SWITCH	K66T-1B-BL-6.5	94000480	1
CN01	CONNECTOR SOCKET	TJC3-6A	94300107	1
CN03	CONNECTOR SOCKET	TJC3-2P-260	90400915	1
CN04	WIRE ASS'Y	300mm	90402080	1
CN05	WIRE ASS'Y	230mm	90401673	1
CN02	WIRE ASS'Y	TJC3-5Y-750mm	90401725	1
POWER	TACT SWITCH	KFC-A06-1H-9	94008608	1

VD02	TRANSISTOR	KSC815-YTA-----F	94400192	1
RD14	CARBON FILM RESISTOR	RT13-1/6W-1K-J-----T	94100023	1
RD17	CARBON FILM RESISTOR	RT13-1/6W-1K-J-----T	94100023	1
CN08	WIRE ASS'Y	450mm	90401317	1
	CONTROL BOARD PCB	0091801372V2.0	91801372	1
R01	CARBON FILM RESISTOR	RT13-1/6W-470-J-----T	94100020	1
R02	CARBON FILM RESISTOR	RT13-1/6W-620-J-----T	94100916	1
R03	CARBON FILM RESISTOR	RT13-1/6W-1K-J-----T	94100023	1
R04	CARBON FILM RESISTOR	RT13-1/6W-1.2K-J-----T	94100753	1
R05	CARBON FILM RESISTOR	RT13-1/6W-1.8K-J-----T	94100722	1
RB06	CARBON FILM RESISTOR	RT13-1/6W-10K-J-----T	94100033	1
RB07	CARBON FILM RESISTOR	RT13-1/6W-10K-J-----T	94100033	1
R12	CARBON FILM RESISTOR	RT13-1/6W-100-J-----T	94100017	1
R11	CARBON FILM RESISTOR	RT13-1/6W-100-J-----T	94100017	1
R13	CARBON FILM RESISTOR	RT13-1/6W-10K-J-----T	94100033	1
VD01	TRANSISTOR	2SA1015	94400439	1
C13	CERAMIC CAPACITOR	CT1-F-63V-0.01μF-Z-F05	94201040	1
C11	ELECT. CAPACITOR	CD110X-16V-100μF-M-F05	94200747	1
C12	ELECT. CAPACITOR	CD110X-16V-47μF-M-F05	94200988	1
			009440019	
N701	IC	TDA9859	9	1
CN708-CN			009430053	
701	2*8 16PINS		1	1
009180115	PCB		009180115	
8			8	1
			009420173	
C714	film capacitor	CL21X-50V-562-J-----F	5	1
			009420173	
C717	film capacitor	CL21X-50V-562-J-----F	5	1
			009420143	
C713	film capacitor	CL21X-50V-333-J-----F	7	1
			009420143	
C718	film capacitor	CL21X-50V-333-J-----F	7	1
			009420146	
C722	film capacitor	CL21X-63V-224-J-----F	3	1
			009420146	
C709	film capacitor	CL21X-63V-104-J-----F	2	1
			009420008	
C721	film capacitor	CL11-63V-0.015μF-J-F05	7	1
			009410001	
R705	CARBON FILM RESISTOR	RT13-1/6W-100-J-----T	7	1
			009410001	
R706	CARBON FILM RESISTOR	RT13-1/6W-100-J-----T	7	1
			009410002	
R730	CARBON FILM RESISTOR	RT13-1/6W-1K-J-----T	3	1
			009410002	
R726	CARBON FILM RESISTOR	RT13-1/6W-1K-J-----T	3	1
			009410003	
R753	CARBON FILM RESISTOR	RT13-1/6W-10K-J-----T	3	1
			009410003	
R752	CARBON FILM RESISTOR	RT13-1/6W-10K-J-----T	3	1
			009410003	
R731	CARBON FILM RESISTOR	RT13-1/6W-10K-J-----T	3	1
			009410003	
R727	CARBON FILM RESISTOR	RT13-1/6W-10K-J-----T	3	1
			009420004	
C712	ELECT. CAPACITOR	F	6	1
			009420000	
C711	ELECT. CAPACITOR	F	8	1

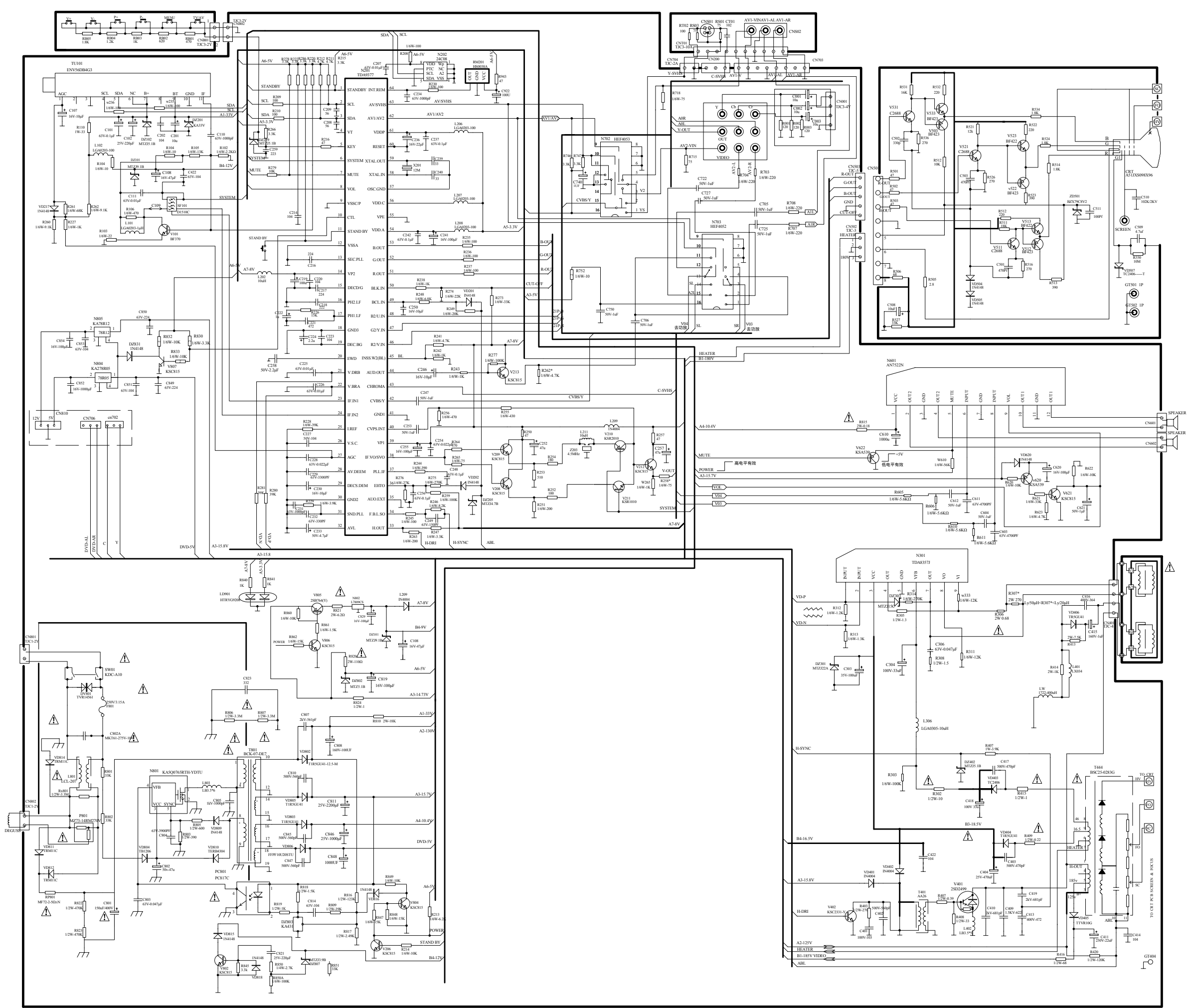
C719	ELECT. CAPACITOR	CD110-50V-10uF±20%-----F	009420004 6	1
C720	ELECT. CAPACITOR	CD110-16V-10uF±20%-----F	009420000 8	1
C710	ELECT. CAPACITOR	CD110X-25V-100uF±20%--F	009420058 1	1
C707	ELECT. CAPACITOR	CD110X-25V-100uF±20%--F	009420058 1	1
L709	inductance	LGA0203-100-K-----T	009450002 1	1
NN02	IC	TDA9850	009440079 6	1
ZD03	crystal	CSB503F58(500KHZ)	009460011 9	1
MD701A	socket	JL-6AW	009430018 4	1
MD702A	socket	JL-7AW	009430018 6	1
	PCB	BTSC PCB	009180113 6	1
RD22	CARBON FILM RESISTOR	RT13-1/6W-100-J-----T	009410001 7	1
RD20	CARBON FILM RESISTOR	RT13-1/6W-150Ω-J-----T	0094100802	1
RD25	CARBON FILM RESISTOR	RT13-1/6W-100-J-----T	0094100017	1
RD26	CARBON FILM RESISTOR	RT13-1/6W-2.2KΩ-J-----T	0094100026	1
RD21	CARBON FILM RESISTOR	RT13-1/6W-8.2K-J-----T	0094100032	1
CD26	CERAMIC CAPACITOR	CT1-F-63V-0.022μF-Z-F05	0094201448	1
CD38	film capacitor	CL21X/CL23B-50V-0.015uF-J-----	0094202341	1
CD20	film capacitor	CL21X-50V-0.047uF-F5-K----F	0094201093	1
CD21	film capacitor	CL21X-63V-104-J-----F	0094201462	1
CD41	film capacitor	CL21X-63V-104-J-----F	0094201462	1
CD29	film capacitor	CL21X-63V-224-J-----F	0094201463	1
CD28	film capacitor	CL21X-63V-474-J-----F	0094201465	1
CD27	ELECT. CAPACITOR	CD110X-16V-100μF-M-F05	0094200747	1
CD39	ELECT. CAPACITOR	CD110X-16V-100μF-M-F05	0094200747	1
CD47	ELECT. CAPACITOR	CD110X-50V-1μF-M-F05	0094200043	1
CD48	ELECT. CAPACITOR	CD110X-50V-1μF-M-F05	0094200043	1
CD22	ELECT. CAPACITOR	CD110X-50V-4.7μF-M-F05	0094200751	1
CD31	ELECT. CAPACITOR	CD110X-50V-4.7μF-M-F05	0094200751	1
CD32	ELECT. CAPACITOR	CD110X-50V-4.7μF-M-F05	0094200751	1
CD35	ELECT. CAPACITOR	CD110X-50V-4.7μF-M-F05	0094200751	1
CD23	ELECT. CAPACITOR	CD110X-16V-10μF-M-F05	0094200008	1
CD45	ELECT. CAPACITOR	CD110X-16V-10μF-M-F05	0094200008	1
CD30	ELECT. CAPACITOR	CD110X-16V-10μF-M-F05	0094200008	1
CD46	ELECT. CAPACITOR	CD110X-16V-10μF-M-F05	0094200008	1
CD33	ELECT. CAPACITOR	CD110X-16V-10μF-M-F05	0094200008	1
CD25	ELECT. CAPACITOR	CD110X-16V-22μF-M-F05	0094201043	1
CD36	ELECT. CAPACITOR	CD110X-50V-2.2μF-M-F05	0094200986	1
CD37	ELECT. CAPACITOR	CD110X-50V-2.2μF-M-F05	0094200986	1
CD40	ELECT. CAPACITOR	CD110X-50V-2.2μF-M-F05	0094200986	1
CD42	ELECT. CAPACITOR	CD110X-50V-2.2μF-M-F05	0094200986	1

LD02

inductance

LGA0203-100-K-----T

0094500021 1



DTA-2198 Exploded view :

