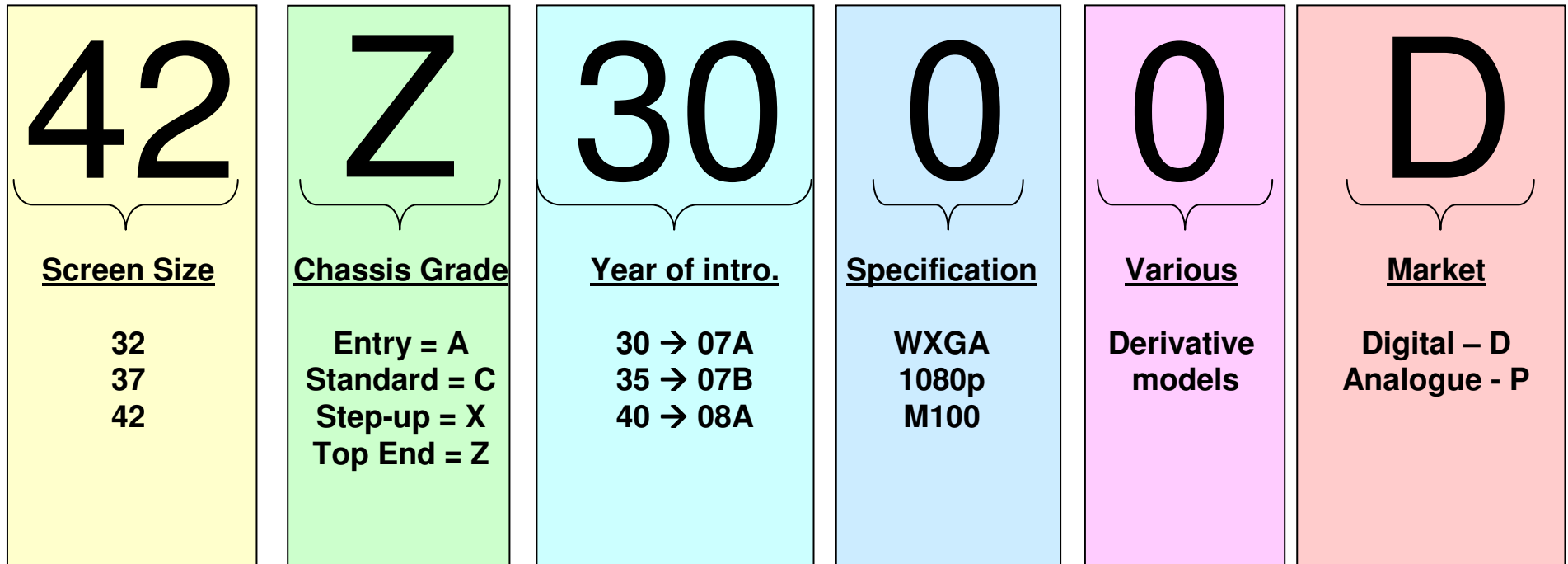
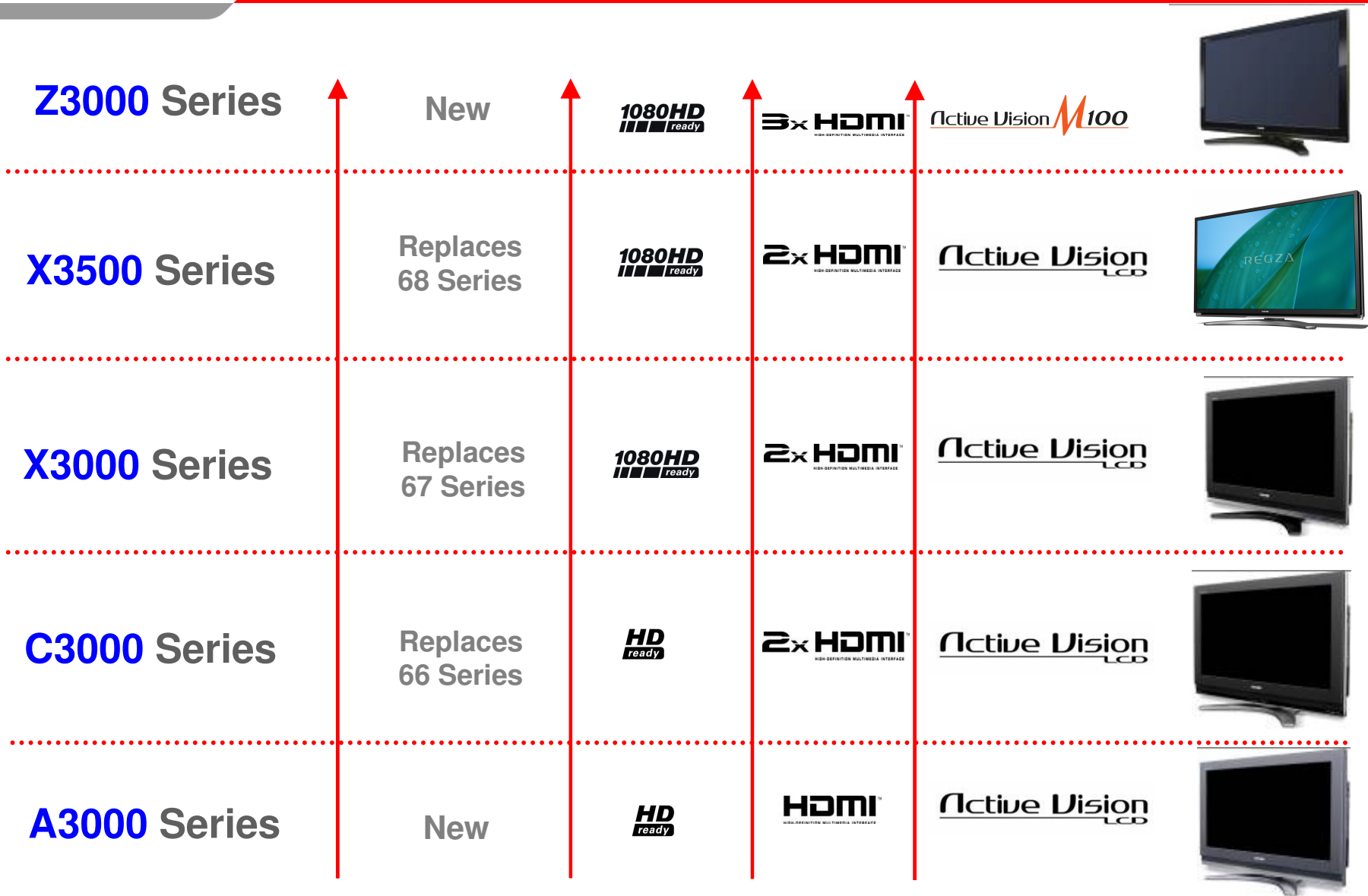




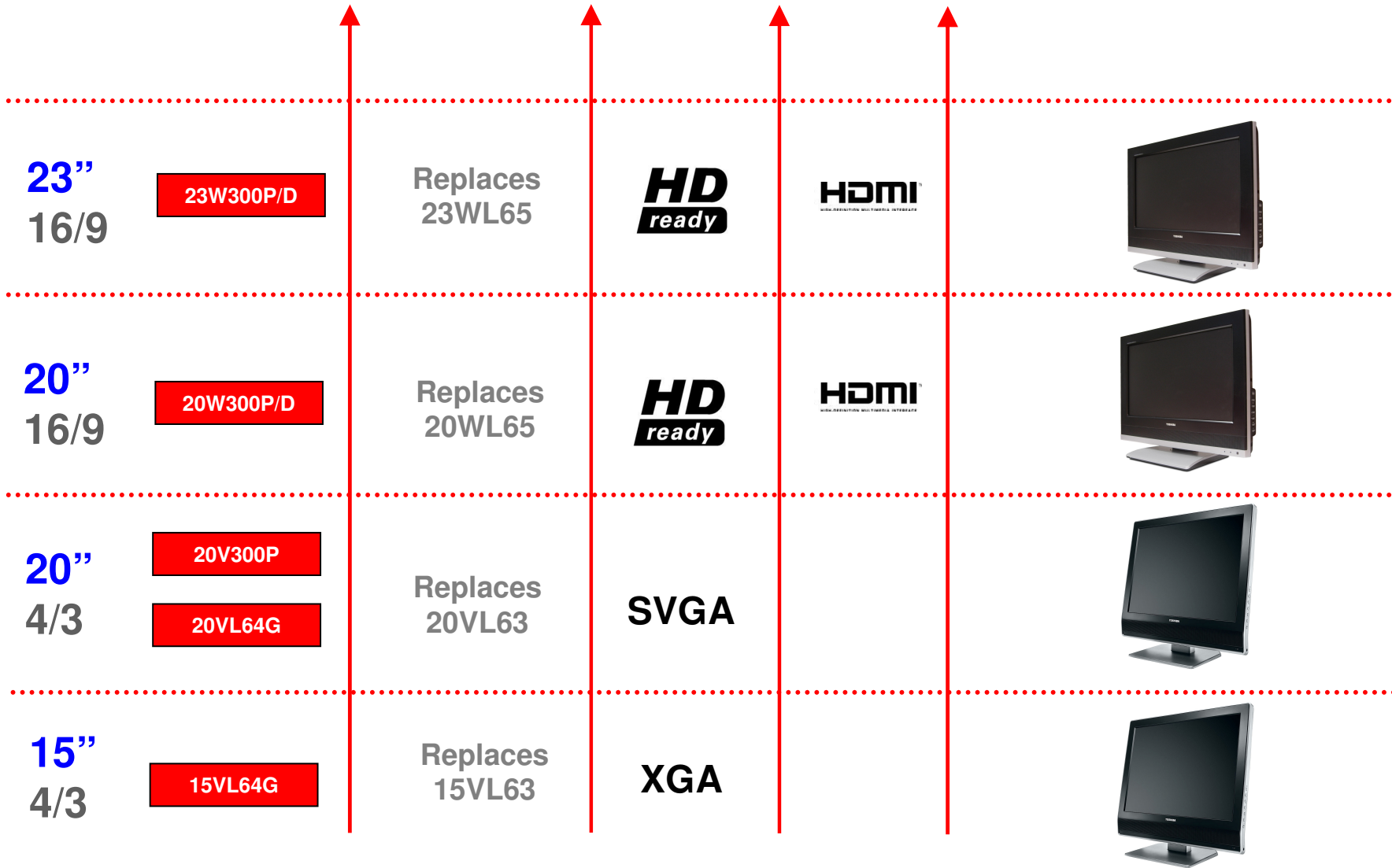
REGZA

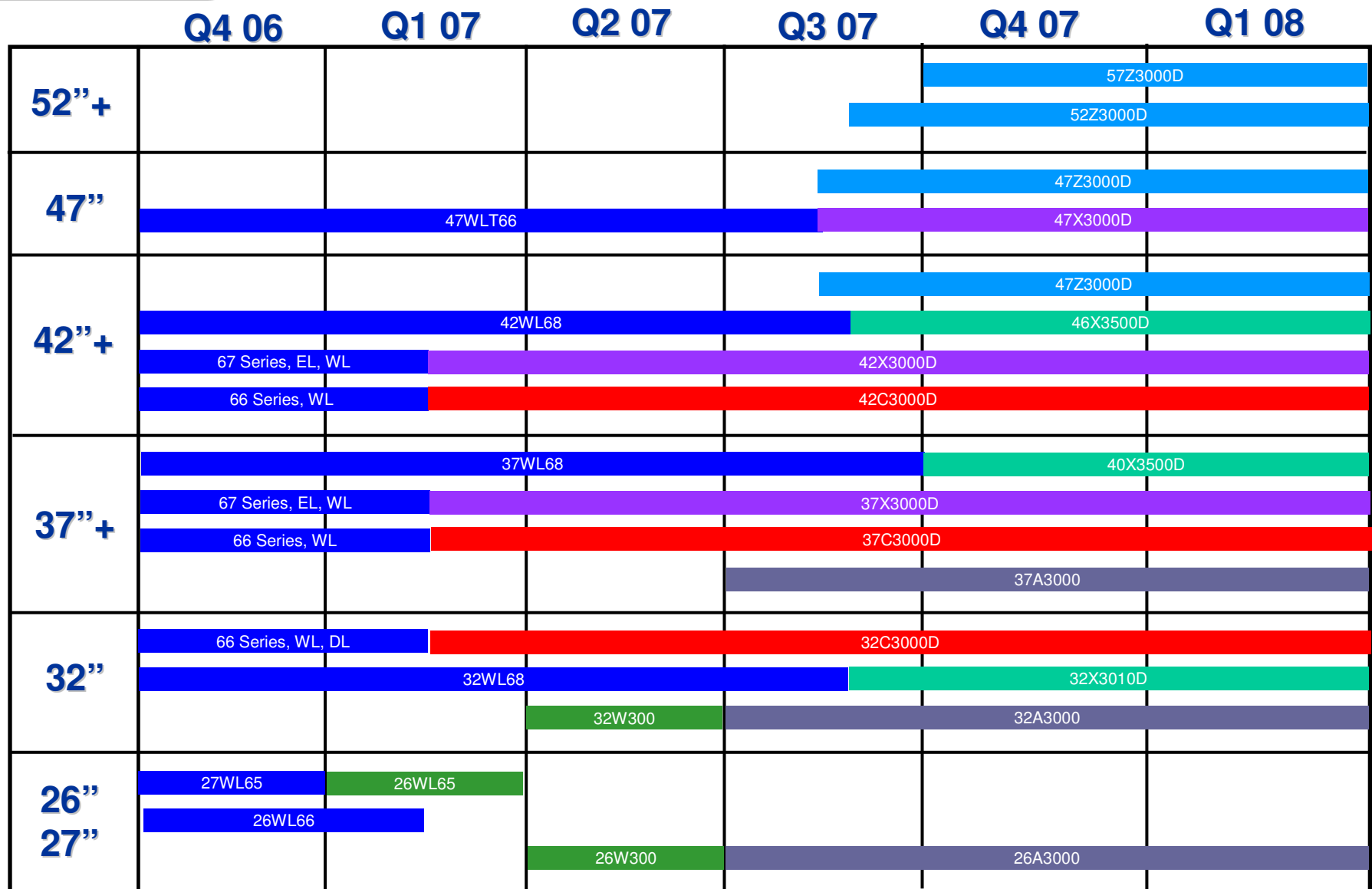
Adding colour to Life





	OEM	A Series	C Series	X 3000	X 3500	Z Series
52"+						57Z3000D 52Z3000D
46"+				47X3000P/D	46X35000P	47Z3000D
40"+			42C3000P/D 42C3001 & 2	42X3000P/D	40X3500P	42Z3000D
37"		37A3000P/D	37C3000P/D 37C3001 & 2	37X3000P/D		
32"	32W300P/D	32A3000P/D	32C3000P/D 32C3001 & 2			
26"	26W300P/D 26WL65G	26A3000P/D		1080HD ready	1080HD ready	1080HD ready Active Vision M100





TOSHIBA

GROUP TEST! WE REVEAL THE 20in LCD TVs YOU MUST BUY

What Video & Widescreen TV

THE ESSENTIAL GUIDE TO TVs, HI-DEF & DIGITAL RECORDERS

CHAMPION RECORDERS!

EXCLUSIVE! We reveal our favorite Professional DVD-TV HD Recorders & more!

IN-DEPTH TESTS YOU CAN TRUST!



TrustedReviews.com

Toshiba 32WLT66 32in LCD TV

Price (EU VAT) £1,200
Price (inc VAT) £1,560
Manufacturer: Toshiba
Supplier: Currys

TR

RECOMMENDED

The 20th month's proposition

WhatPlasma BEST BUY



WHAT HI-FI? SOUND AND VISION

★★★★★

32in LCD TV

Toshiba 32WLT66

THE OUTSTANDING PICTURE QUALITY EVEN BETTERS TOSHIBA'S PREVIOUS EXEMPLARY EFFORTS

The outstanding picture quality even betters Toshiba's previous exemplary efforts

PRICE: £1,200 (inc VAT)

OVERALL RATING: ★★★★★

Toshiba 32WLT66

Toshiba hits a new dimension with an all-digital, affordable set

THE FACTS

- TV SIZE: 32"
- RES: 1080p
- MODULATION: 1,000 Hz
- CHANNELS: 125
- TV TYPE: PLASMA
- DISPLAY: 15.5 W

CONCLUSION

THE WINNER

It takes two

Wings in the...



Best Buy

What Video & Widescreen TV

BUY

OVERALL RATING: ★★★★★

32in LCD TV > GROUP TEST



Toshiba 32WLT66

A forward-thinking LCD TV, as Toshiba sees the future and recognizes that variable digital content flows are a necessity, not a luxury

PRICE: £1,200

OVERALL RATING: 93%

WHAT HOME CINEMA BEST BUY

at-a-glance guide to features and ratings for all the kit tested

Model	Price	Resolution	Channels	TV Type	Display
LG 32L220	£1,200	1080p	125	Plasma	15.5 W
Looney Tunes 32" TV	£1,200	1080p	125	Plasma	15.5 W
Philips 32PFL6710	£1,500	1080p	125	Plasma	15.5 W
Sony 32WDP750	£1,300	1080p	125	Plasma	15.5 W

CONCLUSION

It takes two

It takes two

It takes two

GAME CUTIE

What HDTV EDITOR'S CHOICE

REGZA

Active Vision M100

TOSHIBA

An amazing acknowledgment for the WL66 series....



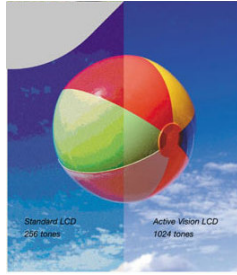
REGZA

Active Vision **M100**

Active Vision



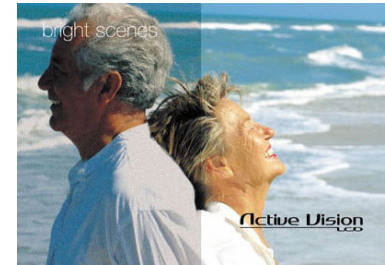
Detail



Colour



Movement

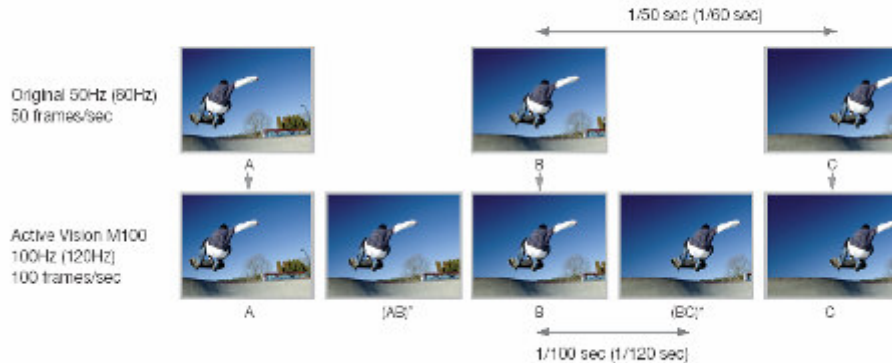


Contrast

Active Vision M100

By creating a new frame from two original frames and doubling the number of frames, Active Vision M100 reduces afterimages.

This is because each frame is displayed only half the length of time compared to the original 50Hz signal by doubling the number of frames.



* Intermediate frames artificially created by scanning and storing frames A and B, and calculating a halfway frame.



OFF



ON

- Toshiba’s picture processing technologies have become well established with the media.

Active Vision LCD



“Black levels are striking and there’s little sign of motion smearing”



“Colour balance and contrast levels are excellent, meaning plenty of blacks at the same time as bright vivid colours ”



“colours are phenomenal.....underpinned by one of the best black-level performances we have ever seen”



“Active Vision LCD helps the 37WLT66 serve up outstanding LCD picture quality”

Active Vision M100



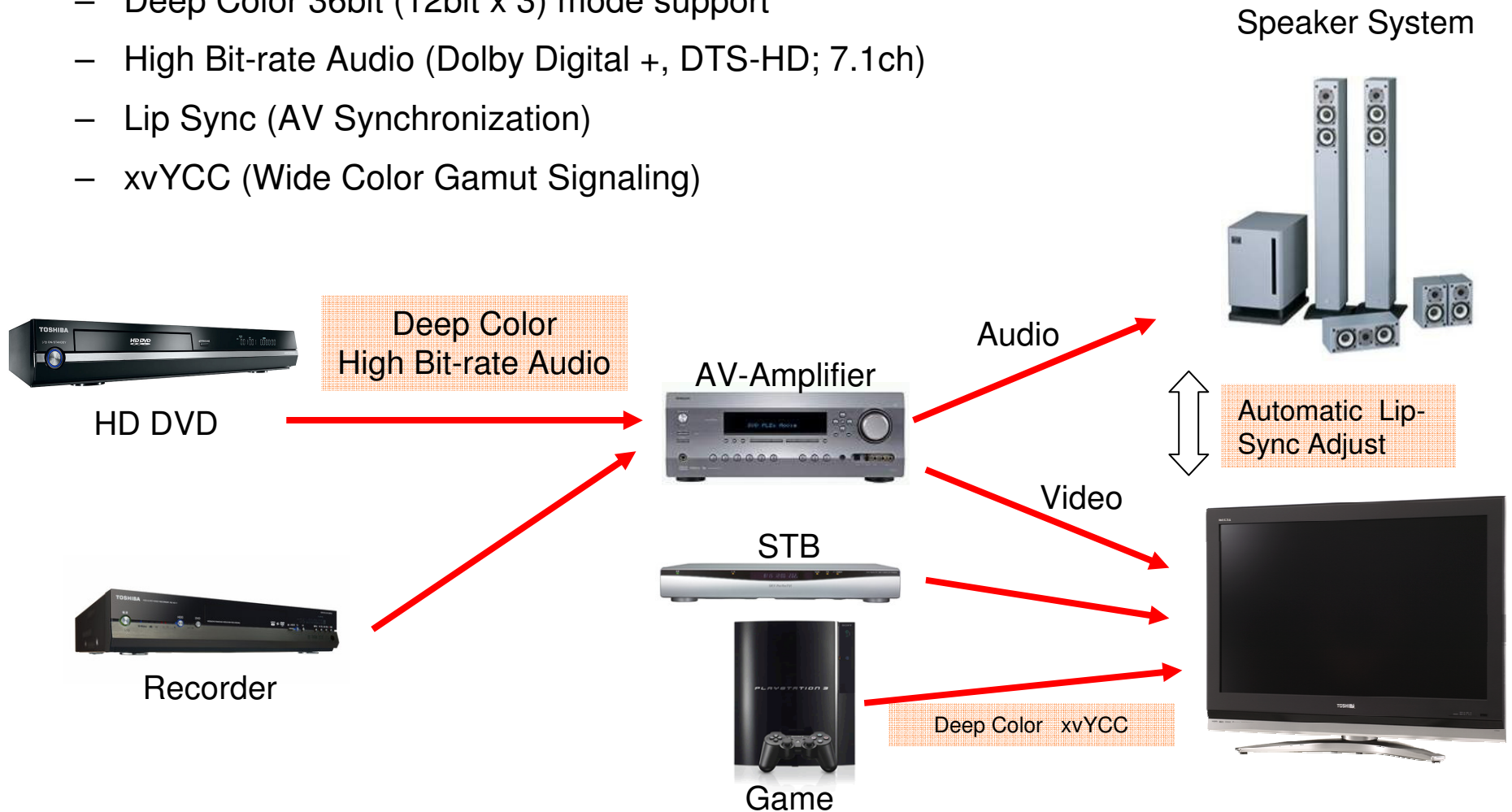
“I paid close attention to the amount of motion blur and smearing, or more accurately, the **lack of motion blur** and smearing. Watching a Premiership match in HD provided smooth, **clear movement**, with nothing to distract from the beautiful game. Slow panning movements didn’t seem to phase the 32WLT68 either, even in scenes of high contrast”



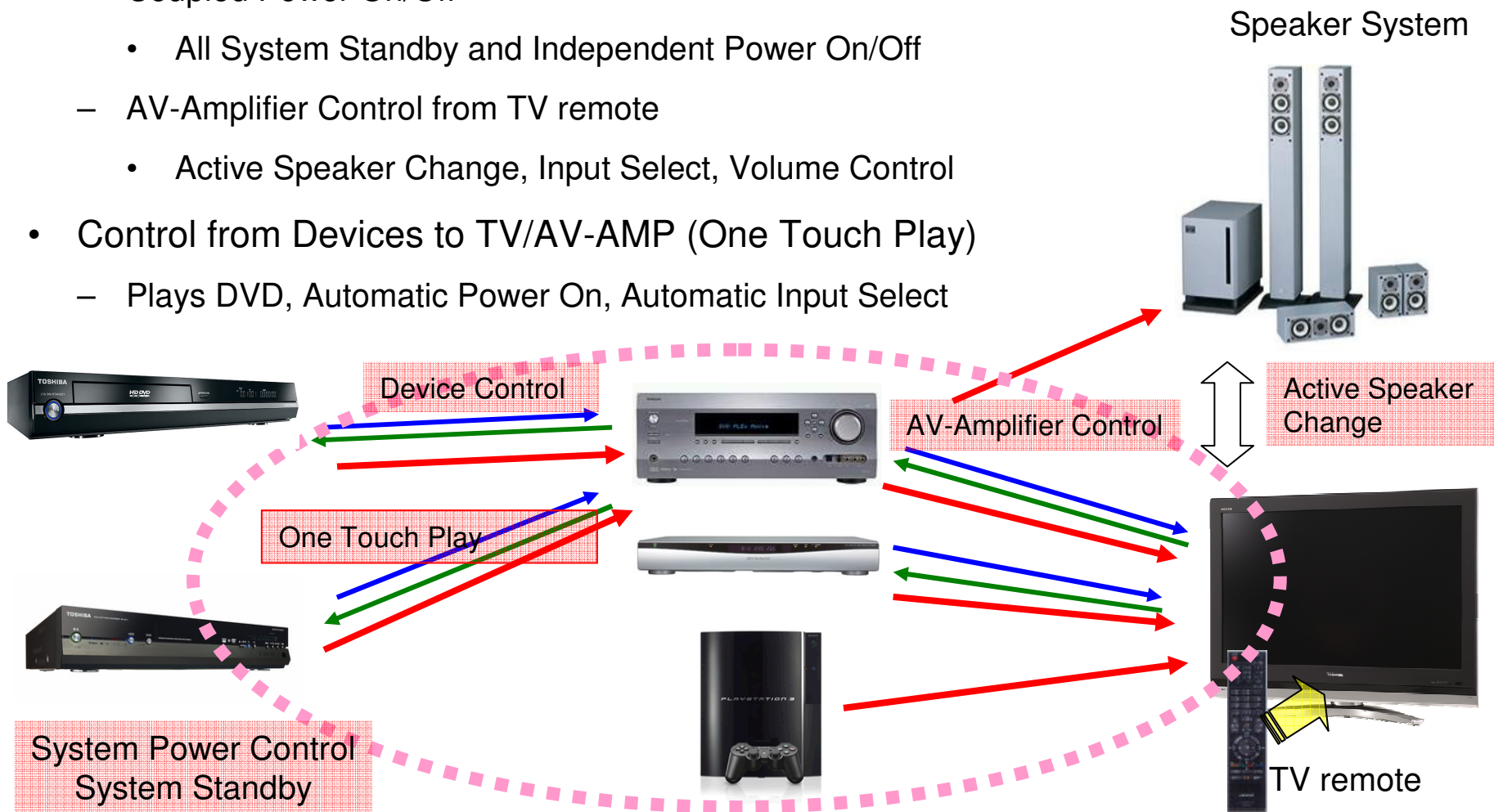
“**Superb black levels** instill images with **striking detail and bold contrast** that create almost tangible realism, which is enhanced by the natural colour balance. **Movement is excellent** without a trace of smearing or staggering “

HDMI-1.3 Features

- Deep Color 36bit (12bit x 3) mode support
- High Bit-rate Audio (Dolby Digital +, DTS-HD; 7.1ch)
- Lip Sync (AV Synchronization)
- xvYCC (Wide Color Gamut Signaling)



- Control from TV to Devices (Device Controlled from TV remote)
 - Coupled Power On/Off
 - All System Standby and Independent Power On/Off
 - AV-Amplifier Control from TV remote
 - Active Speaker Change, Input Select, Volume Control
- Control from Devices to TV/AV-AMP (One Touch Play)
 - Plays DVD, Automatic Power On, Automatic Input Select



Model – VL65

15" & 20" Screen size

- Screen resolution

1024 x 768 = 15"

800 x 600 = 20"

- Contrast Ratio

500:1 = 15"

700:1 = 20"

- Brightness

400cdm2 = 15"

450cd/m2 = 20"

- 2 x Scart

- Progressive scan & 3D comb filter



Matt Black with Silver Rim / Trim

Model – **W300**

20" & 23" Screen size

- HD Ready
- Digital Tuner Options
- 1 x HDMI interface
- 1366 x 768 screen resolution
- Contrast Ratio
 - 700:1 = 20"
 - 800:1 = 23"
- 450 cd/m2 Brightness
- 2 x Scart
- Component Video interface



Matt Black with Silver Rim / Trim



Model – **W300**

26" & 32" Screen size

- HD Ready
- Digital Tuner Options
- 1 x HDMI interface
- 1366 x 768 screen resolution
- Contrast Ratio
 - 700:1 = 26"
 - 800:1 = 32"
- 450 cd/m2 Brightness
- 2 x Scart
- Component Video interface



Grey Single tone



Model – **A3000**

26"/ 32"/ 37" Screen sizes

- HD Ready
- Digital Tuner Options
- 1 x HDMI interface
- 1366 x 768 screen resolution
- Contrast Ratio
 - 700:1 = 26"
 - 800:1 = 32"
 - 850:1 = 37"
- 500 cd/m2 Brightness
- 2 x Scart
- Component Video interface



Grey with Silver Trim



Model – C3000

26" / 32" / 37" / 42" Screen size

- HD Ready
- Digital Tuner Options
- 2 x HDMI interface
- Dynamic Contrast Ratio
- 1366 x 768 screen resolution
- Contrast Ratio
 - 800:1 = 26"/32"
 - 1000:1 = 37"/42"
- Dynamic Contrast 3500:1
- 500 cd/m2 Brightness
- 2 x Scart
- Component Video interface



Matt Black with Silver Rim / Trim



Active Vision
LCD



2x HDMI™
HIGH-DEFINITION MULTIMEDIA INTERFACE



REGZA

Active Vision M100

Model – C3001

26"/ 32"/ 37"/ 42" Screen size

- HD Ready
- Digital Tuner Options
- 2 x HDMI interface
- Dynamic Contrast Ratio
- 1366 x 768 screen resolution
- Contrast Ratio
 - 800:1 = 26"/32"
 - 1000:1 = 37"/42"
- Dynamic Contrast 3500:1
- 500 cd/m2 Brightness
- 2 x Scart
- Component Video interface



TBC – 2 options available



Active Vision
LCD



2x HDMI™
HIGH-DEFINITION MULTIMEDIA INTERFACE



REGZA

Active Vision M100

Model – C3002

26"/ 32"/ 37"/ 42" Screen size

- HD Ready
- Digital Tuner Options
- 2 x HDMI interface
- Dynamic Contrast Ratio
- 1366 x 768 screen resolution
- Contrast Ratio
 - 800:1 = 26" / 32"
 - 1000:1 = 37"/42"
- Dynamic Contrast 3500:1
- 500 cd/m2 Brightness
- 2 x Scart
- Component Video interface



TBC – 2 options available



Active Vision
LCD



2x HDMI™
HIGH-DEFINITION MULTIMEDIA INTERFACE



REGZA

Active Vision M100

Model – X3000

37"/ 42"/ 47" Screen size

- 1080 HD Ready
- Digital Tuner Options
- 2 x HDMI interface
- 1920 x 1080 screen resolution
- Contrast Ratio

800:1 = 37"
1000:1 = 42"/47"

- Dynamic Contrast 3500:1
- 500 cd/m2 Brightness
- CEC functionality
- 2 x Scart
- Component Video interface



Piano Black with Silver Trim

1080HD
ready

Active Vision
LCD

DYNAMIC
CONTRAST

2x HDMI
HIGH-DEFINITION MULTIMEDIA INTERFACE

COMPONENT
VIDEO
input

REGZA

Active Vision **M100**

Model – X3500

40"/ 46" Screen size

- HD Ready
- Digital Tuner Options
- 2 x HDMI interface
- 1366 x 768 screen resolution
- Contrast Ratio

800:1 = 32"

1000:1 = 37"/42"

- Dynamic Contrast 3500:1
- 500 cd/m2 Brightness
- CEC functionality
- 2 x Scart
- Component Video interface



Super Slim Bezel, Shiny Black



Active Vision
LCD



2x HDMI™
HIGH-DEFINITION MULTIMEDIA INTERFACE



REGZA

Active Vision M100

image is everything

Model – “Z3000D

42”/ 47”/ 52”/ 57” Screen size

- HD Ready
- Digital Tuner
- 3 x HDMI interface
- 1920 x 1080 screen resolution
- Contrast Ratio
 - 1000:1 = 42/47”
 - 800:1 = 52/57”
- Dynamic Contrast 3500:1
- 500 cd/m2 Brightness
- CEC Functionality
- 2 x Scart
- Component Video interface



Piano Black with Silver Rim



floor stands

- 1 x stand for 32" & 37" screen sizes
- 1 x stand for 42" screen size



floor stands

Available floor stands for the C3001 series

- 1 x stand for 32" & 37" screen sizes
- 1 x stand for 42" screen size





- Market overview
- Product strategy
- Product Line-up

TOSHIBA

Design concept for 2007



REGZA

Active Vision **M100**



- PAL Progressive
- Component /composite Video
- JPEG Picture Viewer
- Coaxial Digital Output
- 14bit/108 MHz Video DAC
- 24bit/192KHz Audio DAC



- DivX (version 6)
- MP3 Playback
- PAL Progressive
- Component /composite Video
- JPEG Picture Viewer
- Coaxial Digital Output
- 14bit/108 MHz Video DAC
- 24bit/192KHz Audio DAC



- HDMI - upconversion to 1080i
- HD JPEG
- DivX (version 6)
- MP3 Playback
- PAL Progressive
- Component /composite Video
- JPEG Picture Viewer
- Coaxial Digital Output
- 14bit/108 MHz Video DAC
- 24bit/192KHz Audio DAC



- DivX (version 6)
- MP3 Playback
- PAL Progressive
- Component /composite Video
- JPEG Picture Viewer
- Coaxial Digital Output
- PDC
- Simultaneous play/rec
- 7 event /1 month timer



- Multidrive Recording (+RW/-RW)
- 160GB HDD
- Timeslip
- PAL Progressive scan
- Component video output
- DivX playback
- Auto recording from STB
- MP3 playback & JPEG picture viewer
- 8 event / 1 month timer
- 6 recording modes (SEP = 10 hours)

Key Features

- DVD Recorder with 160Gb Hard Disk Drive
- Chase Play / Timeslip
- EPG
- DivX Playback
- MP3 Playback
- JPEG Viewer

Connectors

- S-Video, Composite and Audio Input
- 2 x SCART Output
- S-Video Output
- Coaxial and Analogue Output, DTS Digital

Video Processing

- PAL Progressive
- 3D Digital Noise Reduction





- HD output resolution: 1080i/720p
- DVD Video: up-conversion to 720p/1080i with HDMI
- HDMI output (v1.2a)
- Component, S-Video and Composite Video Terminals
- Analog 2ch down-mix audio outputs and optical output
- Ethernet terminal for Internet connection
- Extension terminal





- HD output resolution: 1080p/1080i/720p
- DVD Video: up-conversion to 720p/1080i/1080p with HDMI terminal, thanks to an ultimate I/P Converter & Scaler
- HD 4 x over-sampling with DAC 297MHz/12bit
- HDMI Ver.1.3, Component, S-Video and Composite Video Terminals
- Analog 5.1 ch audio outputs, coaxial and optical output
- Ethernet terminal for Internet connection
- Extension terminal



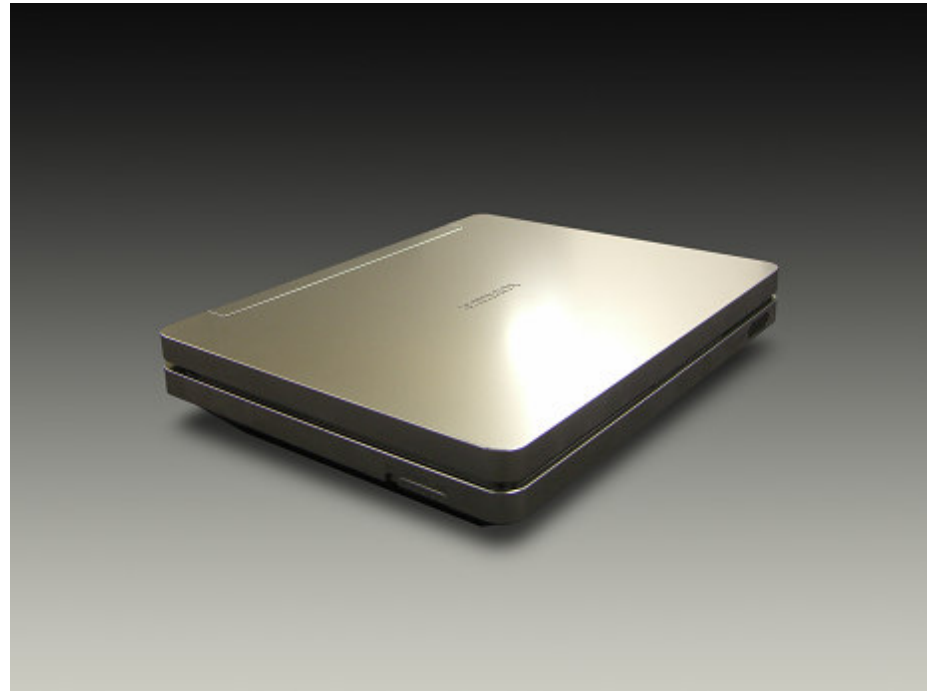
- 7" widescreen
- 3hr battery life
- 480 x 234 resolution
- DivX (version 6)
- JPEG Picture Viewer
- Digital Optical Output
- MP3, WMA Playback
- Carrycase, adapter, headphones
- Brightness: 180cd/m²
- Contrast ratio: 150:1



- 9" widescreen
- 110 degree viewing angle
- 3hr battery life
- 480 x 234 resolution
- DivX (version 6)
- JPEG Picture Viewer
- Digital Optical Output
- MP3, WMA Playback
- Carrycase ,adapter ,headphones
- Brightness: 180cd/m2
- Contrast ratio: 150:1



- 7" widescreen
- DVB-T Tuner
- 3hr battery life
- 480 x 234 resolution
- DivX (version 6)
- JPEG Picture Viewer
- Digital Optical Output
- MP3, WMA Playback
- Carrycase, adapter, headphones
- Brightness: 180cd/m2
- Contrast ratio: 150:1



- 9" widescreen
- DVB-T Tuner
- 5hr battery life
- 480 x 234 resolution
- DivX (version 6)
- JPEG Picture Viewer
- Digital Optical Output
- MP3, WMA Playback
- Carrycase, adapter, headphones
- Brightness: 180cd/m²
- Contrast ratio: 150:1



- 10.2" IPS widescreen
- 170 degree viewing angle
- DVB-T Tuner
- 5hr battery life
- 480 x 234 resolution
- DivX (version 6)
- JPEG Picture Viewer
- Digital Optical Output
- MP3, WMA Playback
- Carrycase, adapter, headphones
- Brightness: 180cd/m²
- Contrast ratio: 150:1



Category	Model name	2006B						2007A					
		Oct	Nov	Dec	Jan	Feb	Mar	Apr	May	Jun	Jul	Aug	Sep
HD DVD Player	HD-E1-K-TE												
	HD-XE1-K-TE												
player	SD-170-K-TE												
	SD-270E-K-TE												
	SD-370E-S-TE												
	SD-470-K-TE												
combi	SD-37VE												
	SD-38VE												
recorder	D-R265-S-TE												
	D-VR40-S-TE												
HDD & Recorder	RD-XS25-S-TE												
	RD-XV45-S-TE												
	RD-XV47-K-TE												
Portable DVD Player	SD-P30DT												
	SD-P2800												
	SD-P1880												
	SD-P1700												
	SD-P1707												
	SD-P1900												
	SD-P70DT												
	SD-P90DT												
SD-P100DT													

TOSHIBA



Ecosystem
in
Europe



REGZA

Active Vision **M100**

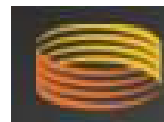
TOSHIBA

*Partners for Encoding & Verifying
Tools in Europe*

TOSHIBA

Microsoft®

 **MEMORY-TECH**

 **dts™**

 **DOLBY®**

ULEAD 

CREATIVE INTELLIGENCE

SONIC

 **Plasmon**

 **DaTARIUS**

SINGULUS

TECHNOLOGIES

REGZA

Active Vision M100

Authoring Labs and Disc Replicators currently producing Titles in Europe



**161 titles available or under production
from those 24 Partner Studios in Europe**





24 titles in Austria, Ireland, Benelux, Portugal, Nordic up to Q2 '07

Q1

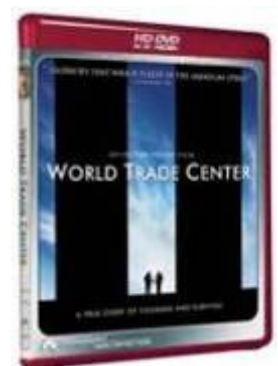
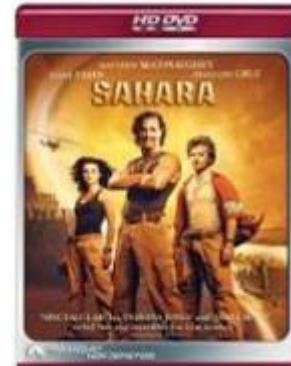
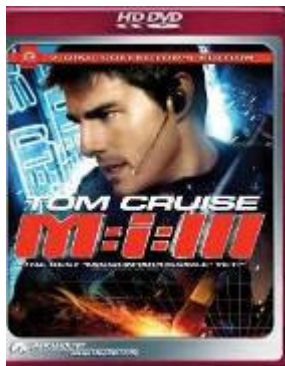


- Q1: 15 titles
- Q2: 9 titles (TBC)



Around 30 titles across Europe by end 2007

- **Austria and Ireland**
 - MI3 & MI trilogy pack already available
 - Q1/Q2: 16 titles TBC
 - Q3/Q4: 12 titles (TBC)
- **Other Countries Western Europe**
 - Same titles launched from mid-2007





Up to 35 titles* in Austria, Ireland, Benelux, Nordic by end 2007



- Total Q1: 10 titles
- Planned Q2: 15 titles
- Planned Q3: 10 titles (TBC)

* Due to distribution rights, some titles may not be available in some countries

TOSHIBA

Marketing



REGZA

Active Vision **M100**

REGZA LCD TV 68 SERIES
image is everything*



Tout pour l'image

Active Vision
Motion 100

HD ready

TNT
intercode

TOSHIBA

www.toshiba.fr/egp

REGZA

Active Vision **M100**



**Tournament
Sponsor
Presentation**

**For
TOSHIBA**

PROJECT

