

Twilight Bay



LEXINGTON



- 6 Bedroom
- 24 Dining Room
- 50 Living Room
- 94 Media Room
- 100 Details
- 102 Visual Index

The morning mist drapes the air, and calms the slightest stir of breeze off the water. Empty glasses on the porch recall an evening shared with family and friends. We invite you to pause and savor these moments of quiet comfort...moments of reflection that will inspire you to look at familiar things with a renewed sense of appreciation. We invite you to experience Twilight Bay from Lexington – a collection that offers a fresh new perspective on sophisticated casual living.



Inspired by timeless French and American traditional styling, designs span two cultures to create a blending of great individual pieces. The continuity of the look is achieved through the artful combination of three distinctive finishes – the warm saddle coloration of Chestnut, the vintage charm of Antique Linen, and the weathered beauty of Driftwood.

Upholstery designs reflect the casual elegance of chic French Laundry styling, with signature elements like washed linen, slipcover tailoring, authentic document patterns, and pewter nailhead trim. The cushioning is relaxed and inviting, while soft neutral colors allow for an eclectic blending of fabrics and finishes.

Twilight Bay is designed to encourage the art of self-expression...offering permission to mix and match pieces to create a look that beautifully expresses your style. Traditional designs are infused with a modern perspective, and a familiar look is transformed into a fresh new interpretation of casual elegant style.

LEXINGTON

THE FINISH STORY

One of the tenets of great interior design is that color, character and texture play a pivotal role in creating visual interest and adding drama to a room. The essence of *Twilight Bay* is found in the blending of three unique and complementary finishes in such a way that the look is fresh and the designs reflect your personal style.

Timeless French and American traditional designs offer a common theme, giving you “permission” to mix and match items and finishes. The neutral color palette ensures harmony in an eclectic presentation. *Twilight Bay* offers evidence that applying a non-traditional finish to a traditional design can be transformational.



The Chestnut finish is a warm saddle coloration, with gentle distressing and a feeling of familiarity. Antique Linen is an aged white crackle finish with moderate distressing and rub-through to a

slate coloration beneath.

Driftwood is a soft taupe-gray painted finish over wood that has been textured to emulate the effects of weather and age. The blending of three distinctive finishes reveals a new sophisticated interpretation of casual elegant style.

We invite you to enjoy the *Twilight Bay* introductory video, shot on location in Isle of Palms, SC. It is posted at lexington.com,

[facebook.com/lexington](https://www.facebook.com/lexington), or [youtube.com/lexingtonfurniture](https://www.youtube.com/lexingtonfurniture).

THE FABRIC STORY

Inspirational lifestyle design incorporates an elegant blending of wood and upholstered furniture. *Twilight Bay* showcases a fresh new design perspective by infusing the distinctive signature look of French Laundry styling into both the wood and upholstered pieces.

French Laundry styling originated in Europe, where artisans took woven hopsack, and

upholstered the fabric on

exposed wood chairs using steel tacks. Often, the fabric was decorated with hand stenciling that took the form of monogrammed initials, flowing script or scenic patterns. The most popular frames were beautifully carved bergère chairs.

The current iteration of French Laundry styling includes casual slipcover tailoring, nailhead trim applied over ribbon tape and relaxed cushioning. The palette

of neutral fabrics includes washed linen, Merino wool, tone-on-tone crewel, and vintage printed documents. The soft colors facilitate the eclectic blending of fabrics and finishes to achieve a relaxed but elegant look.



Twilight Bay

BEDROOM

More than any other living area in a home, the bedroom is the most personal expression of your individual style. With Twilight Bay, the ability to blend finishes and textures offers you limitless options in creating a sanctuary that reflects your personality and fits your lifestyle. Notice how the French Laundry elements in the upholstery and bed linens pull the room together with an effective layering of color and texture.

Hathaway Panel Bed, King
351-144C
80¼W x 89¼L x 68H in.

Brandon Night Chest
350-624
29¾W x 18¼D x 30H in.

Isabella Chair
1545-11
31½W x 36D x 39½H in.

Isabella Ottoman
1545-44
28½W x 21D x 19H in.



Twilight Bay offers four nightstand options...each with a unique design. The Brandon Chest, shown below, features an apothecary drawer configuration offering a pleasing symmetry to the room. On pages 83 and 91, you will see that the piece is equally dramatic in a living room setting.



Left
Hathaway Panel Bed, King
351-144C
80¾W x 89¾L x 68H in.

Brandon Night Chest
352-624
29¾W x 18¼D x 30H in.

Right
Hathaway Panel Bed, King
351-144C

Wayside Dresser
351-221
43W x 18D x 36H in.





Hathaway Panel Bed, King
350-144C
80¼W x 89¼L x 68H in.

Caroline Nightstand
350-621
32W x 18D x 32H in.

Mayfair Nightstand
350-622
30W x 19D x 30H in.



Margaux
Upholstered Bed, King
353-134C
81¾W x 89L x 74¼H in.

Caroline Nightstand
351-621
32W x 18D x 32H in.

Julianna Chair
1592-11
30½W x 33½D x 39H in.



Nailhead trim applied over a tone-on-tone linen tape is a signature element of French Laundry styling, and a defining feature of the Margaux upholstered bed and headboard. Its tailoring speaks to hand craftsmanship and attention to detail.



Bottom Left
Harper Nightstand
350-623
18W x 18D x 29H in.

Hathaway
Panel Headboard, Twin
351-141HB
41¾W x 61½H in.

Right
Margaux
Upholstered Headboard, Twin
353-131HB
42W x 66H in.

Harper Nightstand
351-623



Hathaway Panel Headboard, Twin
350-141HB
41½W x 61½H in.

Brandon Night Chest
350-624
29¾W x 18¼D x 30H in.

Isabella Chair
1545-11
31½W x 36D x 39½H in.



Twin beds are becoming increasingly popular, yet most are designed for the youth customer. Twilight Bay offers the Margaux upholstered headboard and the Hathaway headboard in twin size. Shown here in different finishes, the looks are both sophisticated and elegant.

Right
Hathaway Panel Headboard,
Twin
351-141HB

Mayfair Nightstand
351-622
30W x 19D x 30H in.





Above
 Hathaway Panel Headboard, Twin
 351-141HB
 41½W x 61½H in.

Mayfair Nightstand
 351-622
 30W x 19D x 30H in.

Left
 Mayfair Nightstand
 350-622



Above
 Caroline Nightstand
 350-621
 32W x 18D x 32H in.

Hathaway Panel Bed, King
 350-144C
 80¼W x 89¼L x 68H in.

Right
 Caroline Nightstand
 351-621





Wayside Dresser
350-221

Above and Right
Hathaway
Panel Bed, King
351-144C
80¼W x 89¼L x 68H in.

Wayside Dresser
351-221
43W x 18D x 36H in.

Childress Mirror
351-205
36½W x 46H in.

Julianna Chair
1592-11
30½W x 33½D x 39H in.

Devereaux Dresser
351-222
68W x 21½D x 38H in.

Bailey Chairside Table
351-951
21¼W x 20¼D x 26H in.



Right
Weston Mirror
350-201
38¾ in. diameter

Devereaux Dresser
350-222

DINING ROOM

The joy of entertaining often comes in bringing a large group together.

The Ashton Dining Table includes three 22-inch leaves, offering you the option of seating as few as six or as many as twelve guests in exceptional style. Fully extended, you might find the chalk boards helpful in finding your designated seat...

Ashton Rectangular Dining Table
350-877

150W x 46D x 30H in.
Shown with 3 leaves

Wingate Side Chair
350-880-01
20½W x 22½D x 38H in.

Wingate Arm Chair
350-881-01
23¾W x 22D x 38H in.



The Ashton Dining Table is a beautiful showcase for the warm Chestnut finish. On the following page, the table is shown without leaves, accommodating six chairs in a more intimate setting. Both chair styles work well with the table design...the Wingate, shown here, is casual while the Byerly is more elegant.



Ashton Rectangular Dining Table
350-877
150W x 46D x 30H in.

Wingate Side Chair
350-880-01
20½W x 22½D x 38H in.

Wingate Arm Chair
350-881-01
23¾W x 22D x 38H in.



Ashton Rectangular
Dining Table
350-877
84W x 46D x 30H in.

Byerly Arm Chair
351-883-01
26W x 23½D x 41¾H in.

Byerly Side Chair
351-882-01
21W x 23½D x 41¾H in.

Hartley Cabinet
351-691
32½W x 20D x 87H in.



The Barrett Dining Table, with its graceful scalloped edge and elegant twisted pedestal base, is available in two sizes. The 60-inch version is shown here, and the 48-inch version is shown on the following page. For homes with grand entrances, the smaller version is dramatic as a center table for the foyer.



60" Diameter
Scalloped Edge Top

Barrett Dining Table
351-875C
60 in. diameter x 30H in.

Byerly Side Chair
352-882
21W x 23½D x 41¾H in.

Pierpoint Display Cabinet
354-864c
43W x 18D x 88H in.





48" Diameter
Scalloped Edge Top

Barrett Dining Table
351-870C
48-in. diameter x 30H in.

Byerly Arm Chair
350-883
26W x 23½D x 41¾H in.





Barrett Dining Table
350-870C
48-in. diameter x 30H in.



Barrett Dining Table
350-875C

Barrett Dining Table
350-875C
60 in. diameter x 30H in.

Byerly Side Chair
351-882-01
21W x 23½D x 41¾H in.

Pierpoint
Display Cabinet
350-864C
43W x 18D x 88H in.

The Wingate chairs are a study in casual elegance. The pierced ladder backs speak to craftsmanship and attention to detail. Natural hand-woven rush seats are a wonderful historical reference. The tie-on seat cushions, in a printed document pattern on linen, reflect classic French Laundry styling.



Wingate Side Chair
350-880-01
20½W x 22½D x 38H in.

Wingate Arm Chair
350-881-01
23¾W x 22D x 38H in.





Byerly Side Chair
351-882-01
21W x 23½D x 41¾H in.

Barrett Dining Table
350-875C
60 in. diameter x 30H in.



Right
Byerly Arm Chair
350-883-01
26W x 23½D x 41¾H in.

Byerly Side Chair
350-882-01
21W x 23½D x 41¾H in.



Byerly Side Chair
352-882-01

Barrett Dining Table
351-870C
48-in. diameter x 30H in.

Pierpoint Display Cabinet
354-864C
43W x 18D x 88H in.



Byerly Side Chair
352-882-01
21W x 23½D x 41¼H in.

Byerly Arm Chair
352-883-01
26W x 23½D x 41¼H in.

Shelter Island Bistro Table
352-873
66W x 41D x 36½H in.

Dalton Counter Stool
352-815-01
19W x 20¾D x 36½H in.



The Shelter Island Bistro Table is the collection's signature piece. Its burnished stainless steel top is anchored with large pewter nails. The base is a showcase for the Driftwood finish. The wood is textured to create a weathered effect, and then finished in a custom taupe-gray coloration to highlight the grain pattern. The look is casual, but the styling is extraordinary.





Above
Merideth Hutch
351-919
62W x 20D x 49H in.

Merideth Console
351-909
59W x 18D x 35H in.

Right
Merideth Hutch
350-919
Merideth Console
350-909



Far Right
Shelter Island Bistro Table
352-873
66W x 41D x 36H in.

Dalton Counter Stool
352-815-01
19W x 20D x 36H in.





Left
Dalton Counter Stool
352-815-01
19W x 20½D x 36½H in.



Right
Dalton Bar Stool
352-816-01
19W x 20½D x 42½H in.

The concave back and serpentine vertical supports on the Dalton Bar and Counter Stools lend a softness to the silhouette that is enhanced by the round shape of the hand-woven rush swivel seats. The Driftwood finish highlights the use of metal on the backs of the stools and kick plates.





Pierpoint
Display Cabinet
354-864C
43W x 18D x 88H in.



The Pierpoint Cabinet, in the Antique Linen finish, features the Driftwood finish as an accent on the back panel. The marriage of colors creates both depth and visual interest when viewed through antique glass doors.



Childress Mirror
350-205
36½W x 46H in.

Kendall Buffet
350-852
72¼W x 20D x 34¾H in.

Pierpoint
Display Cabinet
350-864C



LIVING ROOM

Twilight Bay is a wonderful mix of traditional and transitional styling. Here, the informal stone fireplace blends with the formal mantle and crown molding. The casual stripe on the sofa blends with the elegant pattern on the club chair. The Juliette Mirror, over the fireplace, is one of our favorites, with a perimeter accent of burnished stainless steel that ties back to the complementary top on the Wyatt Cocktail Table.

Phoebe Lamp Table
352-950
25-in. diameter x 26H in.

Carley Sofa
7859-33
94W x 41D x 37H in.

Abbey Chair
1541-11
37½W x 36D x 38H in.

Juliette Mirror
352-902
38-in. diameter

Wyatt Cocktail Table
352-955
40W x 40D x 19H in.





Above
Carley Sofa
7859-33
94W x 41D x 37H in.

Left
Abbey Chair
1541-11
37½W x 36D x 38H in.

Right
Juliette Mirror
352-902
38-in. diameter

Wyatt Cocktail Table
352-955
40W x 40D x 19H in.



Lewiston
Cocktail Table
350-943
60W x 34D x 20H in.

Sydney Slipcover
Left Arm Facing
Love Seat
7373-52L-02
71W x 40½D x 33¾H in.

Sydney Slipcover
Corner Chair
7373-51CR-02
39¾W x 56D x 33¾H in.

Sydney Slipcover
Right Arm Facing
Love Seat
7373-52R-02
71W x 40½D x 33¾H in.

Phoebe Lamp Table
350-950
25-in. diameter x 26H in.

Merideth Console
350-909
59¾W x 18½D x 35¾H in.





Sydney Slipcover Sofa
7373-33-02
93W x 40½D x 33¾H in.



The turned legs and cross stretchers on the Lewiston Cocktail Table give it a sense of proportion that balances the more generous scale required to accommodate seating in a large gathering room.



Lewiston
Cocktail Table
350-943
60W x 34D x 20H in.

Sydney Slipcover
Corner Chair
7373-51CR-02
39¾W x 56D x 33¾H in.

Sydney Slipcover
Left Arm Facing Love Seat
7373-52L-02
71W x 40¾D x 33¾H in.

Sydney Slipcover
Right Arm Facing Love Seat
7373-52R-02
71W x 40¾D x 33¾H in.



Keaton End Table
351-942
32W x 24D x 26H in.

Sydney Slipcover Sofa
7373-33-01
93W x 40½D x 33¾H in.

Holloway Cocktail Table
351-953
42 in. diameter x 19H in.

Abbey Chair
1541-11
37½W x 36D x 38H in.



Left
Holloway Cocktail Table
351-953
42 in. diameter x 19H in.

Right
Holloway Cocktail Table
350-953

Sydney Slipcover Sofa
7373-33-02
93W x 40½D x 33¾H in.

The round Holloway Cocktail Table offers a generous view of the woven cane shelf through a beveled glass top. The cane inserts are patterned in quarters and provide contrast, in pattern and texture, in either the Chestnut or Antique Linen finish.





Top Left
Bailey Chairside Table
350-951
21½W x 20¼D x 26H in.

Isabella Chair
1545-11
31½W x 36D x 39½H in.

Top Right
Bailey
Chairside Table
352-951

Abbey Chair
1541-11
37½W x 36D x 38H in.

Bottom Right
Bailey
Chairside Table
351-951

Isabella Chair
1545-11

Right
Bailey Chairside Table
352-951
351-951
350-951



Phoebe Lamp Table
351-950



Phoebe Lamp Table
352-950



Sydney Slipcover
Left Arm Facing Love Seat
7373-52L-02
71W x 40¾D x 33¾H in.

Sydney Slipcover
Right Arm Facing Love Seat
7373-52R-02
71W x 40¾D x 33¾H in.

Sydney Slipcover
Corner Chair
7373-51CR-02
39¾W x 56D x 33¾H in.

Phoebe Lamp Table
350-950
25-in. diameter x 26H in.



Keaton End Table
350-942
32W x 24D x 26H in.

Abbey Chair
1541-11
37½W x 36D x 38H in.



Jasmine Ottoman
7515-44
35W x 35D x 21H in.

Carley Sofa
7859-33
94W x 41D x 37H in.

Keaton End Table
350-942





Isabella Chair
1545-11
31½W x 36D x 39½H in.

Isabella Ottoman
1545-44
28½W x 21D x 19H in.

Jasmine Ottoman
7515-44
35W x 35D x 21H in.

Carley Sofa
7859-33
94W x 41D x 37H in.

Keaton End Table
350-942
32W x 24D x 26H in.

Abbey Chair
1541-11
37½W x 36D x 38H in.





Barrett Dining Table
351-870C
48-in. diameter x 30H in.



Keaton End Table
351-942
32W x 24D x 26H in.

Abbey Chair
1541-11
37½W x 36D x 38H in.



Above
Carley Sofa
7859-33
94W x 41D x 37H in.

Right
Keaton End Table
352-942
351-942
350-942
32W x 24D x 26H in.





Sydney Slipcover Chair
7373-11-01
37W x 40½D x 33¾H in.

Sydney Slipcover Ottoman
7373-44-01
32W x 23D x 16¾H in.

Halsey Bunching Chest
352-974
39W x 18¼D x 36¼H in.

Right
Wyatt Lamp Table
352-952
24W x 24D x 26H in.





The Olivia Tray Table is special in both form and function, with four adjustable pull-out shelves for storage, and woven cane inserts on the end panels.



Above Left
Olivia Tray Table
350-941
25¼W x 18D x 27H in.

Abbey Chair
1541-11
37½W x 36D x 38H in.

Left, Right and Above
Mallory Chair
7532-11
37W x 36D x 35½H in.

Right
Olivia Tray Table
351-941





Isabella Chair
1545-11
31½W x 36D x 39½H in.

Weston Mirror
350-201
38¾ in. diameter

Devereaux Dresser
350-222
68W x 21½D x 38H in.



Right
Weston Mirror
351-201

Wayside Dresser
351-221
43W x 18D x 36H in.

Julianna Chair
1592-11
30½W x 33½D x 39H in.
Harper Nightstand
351-623
18W x 18D x 29H in.



Right
Halsey
Bunching Chest
352-974
39W x 18¼D x 36¼H in.

Julianna Chair
1592-11



The Halsey Chest, shown below as a pair, features a classic apothecary drawer design. The top row is a pair of drop-front drawers, while the four lower rows are actually a pair of doors that open in the middle. The Brandon chest to the right, which also functions beautifully as a night stand, has four drawers. Both pieces demonstrate the elegance of symmetry.



Childress Mirror
350-205
36½W x 46H in.

Halsey
Bunching Chest
350-974
39W x 18¼D x 36¼H in.



Right
Brandon Night Chest
350-624
29¾W x 18¼D x 30H in.





Veronica Console Table
350-972
84W x 20D x 34H in.

Mallory Chair
7532-11
37W x 36D x 35½H in.

The Veronica Console Table makes a striking entrance piece, or functions beautifully in a supporting role as a sofa table behind your favorite custom upholstery.

Right
Juliette Mirror
352-902
38-in. diameter

Veronica Console Table
352-972

Wingate Side Chair
350-880-01
20½W x 22½D x 38H in.





Sydney Slipcover Chair
7373-11-02
37W x 40½D x 33¾H in.

Sydney Slipcover Ottoman
7373-44-02
32W x 23D x 16¾H in.

Devereaux Dresser
350-222
68W x 21½D x 38H in.

The Merideth Console, shown on the opposite page, can be used as a stand-alone piece or in combination with the hutch, as shown here. The pair is also shown as a home entertainment unit on page 97.



Merideth Hutch
350-919
62W x 20D x 49½H in.

Merideth Console
350-909
59¼W x 18¾D x 35¾H in.

Merideth Console
350-909
59¼W x 18¾D x 35¾H in.





Left Bottom
Byerly Arm Chair
351-883-01
26W x 23½D x 41¾H in.

Colette Secretary
350-933

Left and Right Top
Nicholas Chair
1536-11
28½W x 27D x 38½H in.

Right Bottom
Colette Secretary
354-933

Byerly Arm Chair
352-883-01
26W x 23½D x 41¾H in.



Colette Hutch
354-932
47¾W x 14½D x 44¾H in.

Colette Secretary
354-933
47¾W x 21D x 42¾H in.

Byerly Arm Chair
352-883-01
26W x 23½D x 41¾H in.



Hartley Cabinet
352-691
32½W x 20D x 87H in.

Brandon Night Chest
352-624
29¾W x 18¼D x 30H in.

The Hartley Cabinet works in several areas of the home, offering generous storage behind a pair of beautiful full-length louvered doors. There are two drawers at the bottom, two fixed shelves, and eight adjustable shelves. The cabinets are particularly dramatic when used in pairs. Storage has never looked so good.



Hartley Cabinet
350-691
32½W x 20D x 87H in.

Isabella Chair
1545-11
31½W x 36D x 39½H in.



Right
Hartley Cabinet
351-691

Byerly Side Chair
351-882-01
21W x 23½D x 41¾H in.



MEDIA ROOM

We believe that your furnishings should be the hero in a media room and not the electronics. With that in mind, Twilight Bay offers an array of stylish designs to accommodate the electronics. Featured here is a three-piece configuration that makes a strong transitional design statement, while offering ample function and storage for the electronics.

Halsey Bunching Chest
352-974
39W x 18½D x 36¾H in.

Andrews Entertainment Console
352-907
57¾W x 18½D x 36¾H in.

Mallory Chair
7532-11
37W x 36D x 35½H in.





Right
Merideth Hutch
350-919
62W x 20D x 49½H in.

Merideth Console
350-909
59¼W x 18¾D x 35¾H in.



Above and Below Right
Andrews Entertainment Console
352-907
57¾W x 18¾D x 36¾H in.





Carley Sofa
7859-33
94W x 41D x 37H in.

Holloway Cocktail Table
350-953
42 in. diameter x 19H in.

Keaton End Table
350-942
32W x 24D x 26H in.

Andrews Entertainment Console
350-907
57½W x 18¼D x 36¼H in.

DETAILS

FINISHES



350 Chestnut - a warm saddle brown coloration with gentle distressing



351 Antique Linen - generously distressed white crackle with rub-through to a slate coloration beneath



352 Driftwood - soft taupe-gray color on wood that has been textured to create a weathered effect

353 Parchment - a soft ivory coloration with umber burnishing (exclusive to the feet on the Margaux Bed)
 354 Antique Linen (exterior) & Driftwood (interior)

DINING CHAIR FABRICS



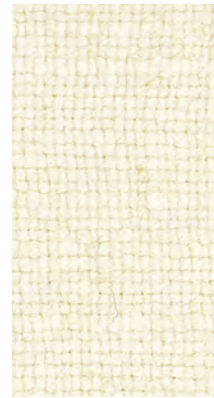
Bridgeport
479311
A basket-weave textured cotton in a soft ivory coloration



Michelle
483311
A chocolate brown vintage document design printed on a natural colored linen weave



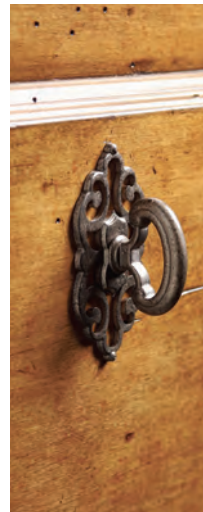
Gabrielle
482871
Taupe Linen (body)



Gabrielle
482811
Ivory Linen (trim)

UPHOLSTERED BED FABRICS

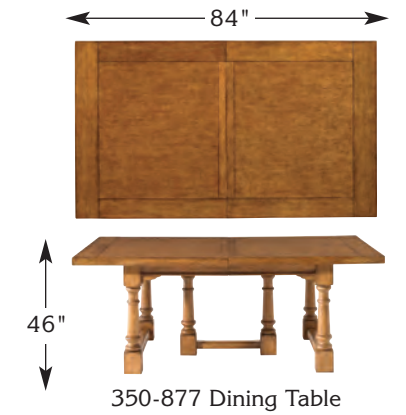
HARDWARE Custom designed, finished in an antique pewter



DINING TABLE TOP CONFIGURATIONS



350-870C Dining Table
Also available in 351 Antique Linen finish



350-877 Dining Table



350-877 Dining Table (shown with (1) 22" leaf)



350-877 Dining Table (shown with (2) 22" leaves)



350-877 Dining Table (shown with (3) 22" leaves)



350-875C Dining Table
Also available in 351 Antique Linen finish

BEDROOM



353-131HB
Margaux Upholstered Headboard
 3/3 Twin
 ½ in. nailhead trim
 Overall size 42W x 66H in.
 Headboard available only in fabric 482871
 Gabrielle - A taupe linen; 482811 ivory
 linen trim
 Metal bed frame required to complete bed.
 See options.
 Shown on page 15

353-133HB
Margaux Upholstered Headboard
 5/0 Queen
 ½ in. nailhead trim
 Overall size 65¼W x 71½H in.
 Headboard available only in fabric 482871
 Gabrielle - A taupe linen; 482811 ivory
 linen trim
 Metal bed frame required to complete bed.
 See options.

353-134HB
Margaux Upholstered Headboard
 6/6 King
 ½ in. nailhead trim
 Overall size 81¼W x 74¼H in.
 Headboard available only in fabric 482871
 Gabrielle - A taupe linen; 482811 ivory
 linen trim
 Metal bed frame required to complete bed.
 See options.

353-135HB
Margaux Upholstered Headboard
 6/0 California King
 ½ in. nailhead trim
 Overall size 77¼W x 74¼H in.
 Headboard available only in fabric 482871
 Gabrielle - A taupe linen; 482811 ivory
 linen trim
 Metal bed frame required to complete bed.
 See options.



353-133C Margaux Upholstered Bed
 5/0 Queen
 ½ in. nailhead trim
 Headboard 65¼W x 71½H in.
 Footboard 65¼W x 16¼H in.
 Overall length 89 in.
 Bottom of side rail to floor 5 in.
 Bottom of box springs to floor 9 in.
 Consists of:
 -133HB Margaux Upholstered Headboard
 -133FB Margaux Upholstered Footboard
 -133SR Upholstered Side Rails/Support
 Bed available only in fabric 482871 Gabrielle -
 A taupe linen; 482811 ivory linen trim

353-134C Margaux Upholstered Bed
 6/6 King
 ½ in. nailhead trim
 Headboard 81¼W x 74¼H in.
 Footboard 81¼W x 16¼H in.
 Overall length 89 in.
 Bottom of side rail to floor 5 in.
 Bottom of box springs to floor 9 in.
 Consists of:
 -134HB Margaux Upholstered Headboard
 -134FB Margaux Upholstered Footboard
 -134SR Upholstered Side Rails/Support
 Bed available only in fabric 482871 Gabrielle -
 A taupe linen; 482811 ivory linen trim
 Shown on pages 12 and 13

353-135C Margaux Upholstered Bed
 6/0 California King
 ½ in. nailhead trim
 Headboard 77¼W x 74¼H in.
 Footboard 77¼W x 16¼H in.
 Overall length 93 in.
 Bottom of side rail to floor 5 in.
 Bottom of box springs to floor 9 in.
 Consists of:
 -135HB Margaux Upholstered Headboard
 -135FB Margaux Upholstered Footboard
 -135SR Upholstered Side Rails/Support
 Bed available only in fabric 482871 Gabrielle -
 A taupe linen; 482811 ivory linen trim



350/351-141HB
Hathaway Panel Headboard
 3/3 Twin
 Overall size 41¼W x 61½H in.
 Post 58¼ in.
 Metal bed frame required to complete bed.
 See options.
 Shown in -350 Chestnut finish on pages 16, 18
 and 19
 Shown in -351 Antique Linen finish on pages 17
 and 18

350/351-143HB
Hathaway Panel Headboard
 5/0 Queen
 Overall size 63¼W x 68H in.
 Post 65H in.
 Metal bed frame required to complete bed.
 See options.

350/351-144HB
Hathaway Panel Headboard
 6/6 King
 Overall size 80¼W x 68H in.
 Post 65H in.
 Metal bed frame required to complete bed.
 See options.

350/351-145HB
Hathaway Panel Headboard
 6/0 California King
 Overall size 76¼W x 68H in.
 Post 65H in.
 Metal bed frame required to complete bed.
 See options.



350/351-143C
Hathaway Panel Bed
 5/0 Queen
 Headboard 63¼W x 68H in.
 Post 65H in.
 Footboard 63¼W x 32¼H in.
 Post 37¼H in.
 Overall length 89¼ in.
 Bottom of side rail to floor 7½ in.
 Bottom of box springs to floor 9¼ in.
 Consists of:
 -143HB Headboard
 -143FB Footboard
 -143SR Side Rails/Support

350/351-144C
Hathaway Panel Bed
 6/6 King
 Headboard 80¼W x 68H in.
 Post 65H in.
 Footboard 80¼W x 32¼H in.
 Post 37¼H in.
 Overall length 89¼ in.
 Bottom of side rail to floor 7½ in.
 Bottom of box springs to floor 9¼ in.
 Consists of:
 -144HB Headboard
 -144FB Footboard
 -144SR Side Rails/Support
 Shown in -350 Chestnut finish on pages 10 and 11
 Shown in -351 Antique Linen finish on pages 6, 7,
 9, 20 and 21

350/351-145C
Hathaway Panel Bed
 6/0 California King
 Headboard 76¼W x 68H in.
 Post 65H in.
 Footboard 76¼W x 32¼H in.
 Post 37¼H in.
 Overall length 93¼ in.
 Bottom of side rail to floor 7½ in.
 Bottom of box springs to floor 9¼ in.
 Consists of:
 -145HB Headboard
 -145FB Footboard
 -145SR Side Rails/Support



350/351-201 Weston Mirror
 Overall framed size 38¼-in. diameter
 Plate 28 in. diameter; 1-in. bevel
 Shown in -350 Chestnut finish on pages 23 and 78
 Shown in -351 Antique Linen finish on page 79



350/351-205 Childress Mirror
 Overall framed size 36¼W x 46H in.
 Plate 26W x 35¼H; 1-in. bevel
 Can be used vertically or horizontally
 Shown in -350 Chestnut finish on pages 49 and 82
 Shown in -351 Antique Linen finish on page 22



350/351-221 Wayside Dresser
 Overall size 43W x 18D x 36H in.
 3 drawers
 Shown in -350 Chestnut finish on pages 19 and 20
 Shown in -351 Antique Linen finish on pages 9,
 19, 20, 21 and 79



350/351-222 Devereaux Dresser
 Overall size 68W x 21¼D x 38H in.
 6 drawers
 Shown in -350 Chestnut finish on pages 23, 78
 and 86
 Shown in -351 Antique Linen finish on page 22



350/351-621 Caroline Nightstand
 Overall size 32W x 18D x 32H in.
 3 drawers
 Shown in -350 Chestnut finish on page 19
 Shown in -351 Antique Linen finish on pages
 10, 12 and 13



350/351-622 Mayfair Nightstand
 Overall size 30W x 19D x 30H in.
 1 drawer; 1 shelf; casters
 Shown in -350 Chestnut finish on pages 11
 and 18
 Shown in -351 Antique Linen finish on pages 17
 and 18



350/351-623 Harper Nightstand
 Overall size 18W x 18D x 29H in.
 3 drawers; finished back
 Shown in -350 Chestnut finish on page 14
 Shown in -351 Antique Linen finish on pages 15
 and 80



350/352-624 Brandon Night Chest
 Overall size 29¼W x 18¼D x 30H in.
 4 drawers
 Shown in -350 Chestnut finish on pages 6, 7
 and 16
 Shown in -352 Driftwood finish on pages 8
 and 90



350/351/352-691 Hartley Cabinet
Overall size 32½W x 20D x 87H in.
2 doors; 2 drawers; 10 shelves (8 adjustable);
grommet for electrical cords
Shown in -350 Chestnut finish on page 92
Shown in -351 Antique Linen finish on pages 28
and 93
Shown in -352 Driftwood finish on pages 90
and 91

DINING ROOM



352-873 Shelter Island Bistro Table
Overall size 66W x 41D x 36½H in.
Bottom of apron to floor 28½
Hammered stainless steel top; 4 drawers; ¾ in.
nailhead trim
SOME ASSEMBLY REQUIRED
Shown on pages 42, 43 and 45



352-815-01 Dalton Counter Stool
Overall size 19W x 20½D x 36½H in.
Rush seat with metal back support
Seat 18W x 18D x 24H in.
STOOL SHIPS ONE PER BOX
STOOL SHIPS ASSEMBLED
Shown on pages 43, 45 and 46



352-816-01 Dalton Bar Stool
Overall size 19W x 20½D x 42½H in.
Rush seat with metal back support
Seat 18W x 18D x 30H in.
STOOL SHIPS ONE PER BOX
STOOL SHIPS ASSEMBLED
Shown on page 47



350/351-870C Barrett Dining Table
Overall size 48-in. diameter x 30H in.
Bottom of top to floor 29 in.
Consists of:
-870T Top 48-in. diameter x 2H in.
-875B Base 34W x 34D x 28H in.
SOME ASSEMBLY REQUIRED
Shown in -350 Chestnut finish on page 34
Shown in -351 Antique Linen finish on pages
32, 33, 41 and 70



350/351-875C Barrett Dining Table
Overall size 60 in. diameter x 30H in.
Bottom of top to floor 29 in.
Consists of:
-875T Top 60 in. diameter x 2H in.
-875B Base 34W x 34D x 28H in.
SOME ASSEMBLY REQUIRED
Shown in -350 Chestnut finish on pages 35
and 38
Shown in -351 Antique Linen finish on pages
30 and 31



350-877 Ashton Rectangular Dining Table
Overall size 84W x 46D x 30H in.
Extends to 150 in. with (3) 22 in. leaves
Bottom of apron to floor 28 in.
Shown on pages 24, 25, 26, 27, 28 and 29



350-880-01 Wingate Side Chair
Overall size 20½W x 22½D x 38H in.
Rush seat with tie-on seat cushion
Seat 20½W x 19D x 19½H in.
Tie on seat cushion available only in fabric
483311 Michelle - A chocolate brown vintage
document design printed on a natural colored
linen weave
CHAIR SHIPS TWO PER BOX
CHAIR SHIPS ASSEMBLED
Shown on page 24, 25, 27, 37 and 85



350-881-01 Wingate Arm Chair
Overall size 23½W x 22D x 38H in.
Rush seat with tie-on seat cushion
Seat 23½W x 19D x 19½H in., Arm 26½H in.
Tie on seat cushion available only in fabric
483311 Michelle - A chocolate brown vintage
document design printed on a natural colored
linen weave
CHAIR SHIPS TWO PER BOX
CHAIR SHIPS ASSEMBLED
Shown on page 25, 27 and 37



350/351/352-882-01 Byerly Side Chair
Overall size 21W x 23½D x 41½H in.
¾ in. nailhead trim
Seat 21W x 19D x 19½H in.
Available only in standard fabric 479311
Bridgeport - A basket-weave textured cotton
in a soft ivory coloration
CHAIR SHIPS TWO PER BOX
ASSEMBLY REQUIRED
Shown in -350 Chestnut finish on page 39
Shown in -351 Antique Linen finish on pages 28,
29, 31, 35 and 93
Shown in -352 Driftwood finish on pages 40
and 41

350/351/352-882-479311 Byerly Side Chair
Overall size 21W x 23½D x 41½H in.
¾ in. nailhead trim
Seat 21W x 19D x 19½H in.
Available only in standard fabric 479311
Bridgeport - A basket-weave textured cotton
in a soft ivory coloration
CHAIR SHIPS TWO PER BOX
CHAIR SHIPS ASSEMBLED

350/351/352-882 Byerly Side Chair
Overall size 21W x 23½D x 41½H in.
¾ in. nailhead trim
Seat 21W x 19D x 19½H in.
Available in any Lexington Upholstery fabric or
COM. If no fabric is specified, chair will ship in
the standard cover.
COM requires 1.5 yards of 54-inch material
with no repeat. Fabrics with a repeat in excess
of 28" will require 20% additional yardage.
See COM instructions inside front cover.
Custom Fabric Applications -
Upcharge will apply to assembled price

CHAIR SHIPS TWO PER BOX
CHAIR SHIPS ASSEMBLED



350/351/352-883-01 Byerly Arm Chair
Overall size 26W x 23½D x 41½H in.
¾ in. nailhead trim
Seat 22W x 19D x 19½H in.
Arm 26½H in.
Available only in standard fabric 479311
Bridgeport - A basket-weave textured cotton
in a soft ivory coloration
CHAIR SHIPS TWO PER BOX
CHAIR SHIPS ASSEMBLED
Shown in -350 Chestnut finish on pages 33 and 39
Shown in -351 Antique Linen finish on pages 28
and 29
Shown in -352 Driftwood finish on page 40

350/351/352-883 Byerly Arm Chair
Overall size 26W x 23½D x 41½H in.
¾ in. nailhead trim
Seat 22W x 19D x 19½H in.
Arm 26½H in.
Available in any Lexington Upholstery fabric or
COM. If no fabric is specified, chair will ship in
the standard cover.
COM requires 1.5 yards of 54-inch material
with no repeat. Fabrics with a repeat in excess
of 28" will require 20% additional yardage.
See COM instructions inside front cover.
Custom Fabric Applications -
Upcharge will apply to assembled price
CHAIR SHIPS ONE PER BOX
CHAIR SHIPS ASSEMBLED



350-852 Kendall Buffet
Overall size 72½W x 20D x 34½H in.
2 doors; 6 drawers (left and right side facing drawers have drop-fronts to accommodate media components; 4 center drawers are felt lined and the top center drawer is divided for silver); 4 adjustable shelves (2 with removable wine racks)
Shown on page 49



350/354-864C Pierpoint Display Cabinet
Overall size 43W x 18D x 88H in.
Deck: 2 antique glass doors; 3 adjustable glass shelves; grooved for plates; antique glass end panels; lighted interior
Deck 43W x 18D x 63H in.
Base: 2 wood doors; 2 adjustable shelves
Base 43W x 18D x 25H in.
Consists of:
-864D Deck
-864B Base
The 354 Pierpoint Display Cabinet is finished in Antique Linen and features a reversible Antique Linen or Driftwood back panel
Shown in -350 Chestnut finish on pages 35 and 48
Shown in -354 Antique Linen with Driftwood finish on pages 31, 41 and 48

LIVING ROOM



352-955 Wyatt Cocktail Table
Overall size 40W x 40D x 19H in.
Hammered stainless steel top; ¾ in. nailhead trim
Shown on pages 51 and 53



352-952 Wyatt Lamp Table
Overall size 24W x 24D x 26H in.
Hammered stainless steel top; 1 shelf; ¾ in. nailhead trim
Shown on page 75



350/351-953 Holloway Cocktail Table
Overall size 42 in. diameter x 19H in.
Inset glass top; 1 wood-framed traditional hexagonal open weave cane shelf
Glass top 35½ in. diameter x ¼ in. thick; 1 in. bevel
SOME ASSEMBLY REQUIRED
Shown in -350 Chestnut finish on pages 61 and 98
Shown in -351 Antique Linen finish on pages 59 and 60



350/351-941 Olivia Tray Table
Overall size 25½W x 18D x 27H in.
4 removable pull-out shelves; traditional hexagonal open weave cane end panels
Shown in -350 Chestnut finish on page 76
Shown in -351 Antique Linen finish on page 77



350-943 Lewiston Cocktail Table
Overall size 60W x 34D x 20H in.
SOME ASSEMBLY REQUIRED
Shown on pages 54 and 57



350/351/352-951 Bailey Chairside Table
Overall size 21½W x 20½D x 26H in.
1 shelf
SOME ASSEMBLY REQUIRED
Shown in -350 Chestnut finish on pages 62 and 63
Shown in -351 Antique Linen finish on pages 22, 62 and 63
Shown in -352 Driftwood finish on pages 62 and 63



350/351/352-942 Keaton End Table
Overall size 32W x 24D x 26H in.
SOME ASSEMBLY REQUIRED
Shown in -350 Chestnut finish on pages 66, 67, 69 and 73
Shown in -351 Antique Linen finish on pages 58, 71 and 73
Shown in -352 Driftwood finish on page 73



350/351/352-950 Phoebe Lamp Table
Overall size 25-in. diameter x 26H in.
1 shelf
SOME ASSEMBLY REQUIRED
Shown in -350 Chestnut finish on pages 55 and 65
Shown in -351 Antique Linen finish on page 64
Shown in -352 Driftwood finish on pages 50 and 64



350/352-972 Veronica Console Table
Overall size 84W x 20D x 34H in.
SOME ASSEMBLY REQUIRED
Shown in -350 Chestnut finish on pages 55 and 84
Shown in -351 Antique Linen finish on page 85



350/352-974 Halsey Bunching Chest
Overall size 39W x 18½D x 36½H in.
2 doors; 2 drawers with drop-fronts to accommodate media components; 2 adjustable shelves; ventilated back; grommet for electrical cords
Shown in -350 Chestnut finish on pages 82 and 83
Shown in -352 Driftwood finish on pages 74, 75, 81, 94 and 95



350/354-932 Colette Hutch
Overall size 47½W x 14½D x 44½H in.
2 antique glass doors; 2 glass shelves; lighted interior
The 354 Colette Hutch exterior is finished in Antique Linen with Driftwood finished interior
Complements -933 Colette Secretary
Shown in -354 Antique Linen with Driftwood finished interior on page 89



350/354-933 Colette Secretary
Overall size 47½W x 21D x 42½H in.
Upper section: Drop-down door creates writing surface; 4 drawers; 1 shelf; open storage compartments; 4 removable partitions
Lower section:
2 doors; 4 adjustable shelves
The 354 Colette Secretary is finished in Antique Linen with Driftwood finished drawer compartment
Accommodates -932 Colette Hutch
Shown in -350 Chestnut finish on page 88
Shown in -354 Antique Linen with Driftwood finished interior on pages 88 and 89



352-902 Juliette Mirror
Overall frame size 38-in. diameter
Hammered stainless steel accents
Plate 28-in. diameter; 1 in. bevel
Shown on pages 51, 53 and 85



350/351-919 Merideth Hutch
Overall size 62W x 20D x 49½H in.
2 shelves (lower shelf is removable)
TV compartment with shelf removed
51W x 13½D x 28H in.
Complements -909 Merideth Console
SOME ASSEMBLY REQUIRED
Shown in -350 Chestnut finish on pages 44, 86 and 97
Shown in -351 Antique Linen finish on pages 44 and 45

350/351-909 Merideth Console
Overall size 59½W x 18½D x 35½H in.
2 drawers with drop-fronts to accommodate media components; 1 shelf; ventilated back
Accommodates -919 Merideth Hutch
SOME ASSEMBLY REQUIRED
Shown in -350 Chestnut finish on pages 44, 86, 87, and 97
Shown in -351 Antique Linen finish on pages 44 and 45

MEDIA ROOM



350/352-907
Andrews Entertainment Console
 Overall size 57½W x 18½D x 36½H in.
 2 doors; 6 drawers (top 2 drawers with drop-fronts to accommodate media components); 3 adjustable shelves; ventilated back; grommet for electrical cords
 Shown in -350 Chestnut finish on page 99
 Shown in -352 Driftwood finish on pages 95 and 96

UPHOLSTERY



7373-33-01 Sydney Slipcover Sofa
 Overall 93W x 40½D x 33½H in.
 Arm 22½H in., Seat 18½H in.
 Inside 80W x 21D in.
 Standard Seat Cushion Ultra Down
 Standard Back Tight
 Standard Features Five 24" Lux Down Throw Pillows, two 18" Lux Down Throw Pillows
 Available Only as Shown – Shown in 4863-11 Gr. 3, three 24" Throw Pillows in 6062-11 Gr. 5 with Cord 795-11, two 24" Throw Pillows in 4863-11 Gr. 3 with Cord 795-11, two 18" Throw Pillows in 5671-11 Gr. 4 with Cord 795-11
 Shown on page 58



7373-33-02 Sydney Slipcover Sofa
 Overall 93W x 40½D x 33½H in.
 Arm 22½H in., Seat 18½H in.
 Inside 80W x 21D in.
 Standard Seat Cushion Ultra Down
 Standard Back Tight
 Standard Features Five 24" Lux Down Throw Pillows, two 18" Lux Down Throw Pillows
 Available Only as Shown - Shown in 4863-31 Gr. 3, three 24" Throw Pillows in 6016-11 Gr. 3 with Cord 755-71, two 24" Throw Pillows in 4863-31 Gr. 3 with Cord 755-71, two 18" Throw Pillows in 4832-11 Gr. 5 with Cord 755-71
 Shown on pages 56 and 61



7373-11-01 Sydney Slipcover Chair
 Overall 37W x 40½D x 33½H in.
 Arm 22½H in., Seat 18½H in.
 Inside 24W x 23½D in.
 Standard Seat Cushion Ultra Down
 Standard Back Cushion Lux Down
 Standard Feature One 24 x 14" Lux Down Kidney Pillow
 Available Only as Shown – Shown in 4863-11 Gr. 3, one 24 x 14" Kidney Pillow in 5671-11 Gr. 4 with Cord 795-11
 Shown on pages 74 and 75

7373-44-01 Sydney Slipcover Ottoman
 Overall 32W x 23D x 16½H in.
 Standard Seat Cushion Ultra Down
 Available Only as Shown – Shown in 4863-11 Gr. 3
 Shown on pages 74 and 75



7373-11-02 Sydney Slipcover Chair
 Overall 37W x 40½D x 33½H in.
 Arm 22½H in., Seat 18½H in.
 Inside 24W x 23½D in.
 Standard Seat Cushion Ultra Down
 Standard Back Cushion Lux Down
 Standard Feature One 24 x 14" Lux Down Kidney Pillow
 Available Only as Shown – Shown in 4863-31 Gr. 3, one 24 x 14" Kidney Pillow in 4832-11 Gr. 5 with Cord 755-71
 Shown on page 86

7373-44-02 Sydney Slipcover Ottoman
 Overall 32W x 23D x 16½H in.
 Standard Seat Cushion Ultra Down
 Available Only as Shown – Shown in 4863-31 Gr. 3
 Shown on page 86



7373-52R-02 Sydney Slipcover Right Arm Facing Love Seat
 Overall 71W x 40½D x 33½H in.
 Arm 22½H in., Seat 18½H in.
 Inside 64½W x 33½D in.
 Standard Seat Cushion Ultra Down
 Standard Back Tight
 Standard Features Four 24" Lux Down Throw Pillows, one 22" Lux Down Throw Pillow, one 20" Lux Down Throw Pillow

7373-51CR-02 Sydney Slipcover Corner Chair
 Overall 39½W x 56D x 33½H in.
 Seat 18½H in.
 Inside 33½W x 33½D in.
 Standard Seat Cushion Ultra Down
 Standard Back Tight
 Standard Features Three 24" Lux Down Throw Pillows, one 22" Lux Down Throw Pillow

7373-52L-02 Sydney Slipcover Left Arm Facing Love Seat
 Overall 71W x 40½D x 33½H in.
 Arm 22½H in., Seat 18½H in.
 Inside 64½W x 33½D in.
 Standard Seat Cushion Ultra Down
 Standard Back Tight
 Standard Features Four 24" Lux Down Throw Pillows, one 22" Lux Down Throw Pillow, one 20" Lux Down Throw Pillow

Available Only as Shown – Shown in 4863-31 Gr. 3, eleven 24" Throw Pillows in 4863-31 Gr. 3, three 22" Throw Pillows in 6016-11 Gr. 3 with Cord 755-71, two 20" Throw Pillows in 4832-11 Gr. 5 with Cord 755-71
 Shown on pages 54, 55, 57, 64 and 65

Also Available
 7373-52R-01 Sydney Slipcover Right Arm Facing Love Seat (Linen)
 7373-51CR-01 Sydney Slipcover Corner Chair (Linen)
 7373-52L-01 Sydney Slipcover Left Arm Facing Love Seat (Linen)



7859-33 Carley Sofa
 Overall 94W x 41D x 37H in.
 Arm 22½H in., Seat 19H in.
 Inside 79W x 26D in.
 Standard Seat Cushion Ultra Down
 Standard Back Cushion Blend Down
 Standard Features Two 20" Lux Down Throw Pillows, two 18" Lux Down Throw Pillows, #9 Nailhead Trim, Casters – Pewter
 Standard Finish Vintage
 Shown in 4830-11 Gr. 3, two 20" Lux Down Throw Pillows – One Side in 6028-11 Gr. 10 / One Side in 4793-11 Gr. 3 with Welt 4793-11 Gr. 3, two 18" Throw Pillows in 6014-11 Gr. 4 with Welt 4793-11 Gr. 3, #9 Nailhead Trim, Casters – Pewter, finish Vintage
 Shown on pages 67, 69, 72, 98 and 99



Shown in 5643-11 Gr. 3, two 20" Throw Pillows in 4837-71 Gr.4 with Welt 4830-11 Gr. 3, two 18" Throw Pillows – One Side in 6027-71 Gr. 10 / One Side in 4830-11 Gr. 3 with Welt 4830-11 Gr. 3, #9 Nailhead Trim, Casters – Pewter, finish Vintage
 Shown on pages 50, 51 and 52



1541-11 Abbey Chair
 Overall 37½W x 36D x 38H in.
 Arm 26H in., Seat 19H in.
 Inside 21½W x 22½D in.
 Standard Seat Cushion Ultra Down
 Standard Back Tight
 Standard Finish Vintage
 Shown in 6022-71 Gr. 10, Contrast Body Welt in 4830-11 Gr. 3, finish Driftwood
 Shown on pages 51, 52, 53 and 62



Shown in 6015-11 Gr. 3, Contrast Body Welt in 4831-11 Gr. 3, finish Driftwood
 Shown on pages 59 and 71



Shown in 6014-11 Gr. 4, Contrast Body Welt in 4830-11 Gr. 3, finish Antique Linen
 Shown on pages 66, 69 and 76



1545-11 Isabella Chair
 Overall 31½W x 36D x 39½H in.
 Arm 25H in., Seat 19H in.
 Inside 21W x 22D in.
 Standard Seat Cushion Ultra Down
 Standard Back Tight
 Standard Feature One 20" Lux Down Throw Pillow
 Standard Finish Vintage
 Shown in 6028-11 Gr. 10, Contrast Welt on Seat Cushion in 4793-11 Gr. 3, one 20" Throw Pillow in 6028-11 Gr. 10 with Welt 4793-11 Gr. 3, finish Antique Linen
 Shown on pages 7, 16, 68 and 78

1545-44 Isabella Ottoman
 Overall 28½W x 21D x 19H in.
 Standard Seat Cushion Ultra Down
 Standard Finish Vintage
 Shown in 6028-11 Gr. 10, Contrast Welt on Seat Cushion in 4793-11 Gr. 3, finish Antique Linen
 Shown on pages 7 and 68



Shown in 6013-11 Gr. 5, Contrast Welt on Seat Cushion in 4830-11 Gr. 3, one 20" Throw Pillow in 6013-11 Gr. 5 with Welt 4830-11 Gr. 3, finish Vintage
 Shown on pages 62 and 92



1592-11 Julianna Chair
 Overall 30½W x 33½D x 39H in.
 Arm 25H in., Seat 18½H in.
 Inside 20½W x 21½D in.
 Standard Seat Cushion Ultra Down
 Standard Back Tight
 Standard Feature #7 Nailhead Trim
 Standard Finish Vintage
 Shown in 6013-11 Gr. 5, Contrast Welt on Seat Cushion in 4830-11 Gr. 3, #7 Nailhead Trim, finish Antique Linen
 Shown on pages 12, 22 and 80



Shown in 4860-11 Gr. 4, #7 Nailhead Trim, finish Antique Linen
 Shown on page 81



7532-11 Mallory Chair
 Overall 37W x 36D x 35½H in.
 Arm 28H in., Seat 16½H in.
 Inside 19W x 22½D in.
 Standard Seat Tight
 Standard Back Tufted
 Standard Features #7 Nailhead Trim, Casters
 Standard Finish Vintage
 Shown in 4619-11 Gr. 4, #7 Nailhead Trim, Casters – Pewter, finish Vintage
 Shown on pages 76 and 77



Shown in 4860-11 Gr. 4, #7 Nailhead Trim, Casters – Pewter, finish Antique Linen
 Shown on pages 76, 84 and 95



7515-44 Jasmine Ottoman
 Overall 35W x 35D x 21H in.
 Standard Seat Tight
 Standard Feature Casters
 Shown in 5642-11 Gr. 3
 (shown horizontal stripe – fabric standard as vertical stripe), Contrast Skirt Block in 4830-11 Gr. 3
 Shown on pages 67 and 69



1536-11 Nicholas Chair
 Overall 28½W x 27D x 38½H in.
 Arm 26H in., Seat 17½H in.
 Inside 20W x 20D in.
 Standard Seat Tufted
 Standard Feature #1 Nailhead Trim
 Standard Finish Heritage
 Shown in 4830-11 Gr. 3, #7 Nailhead Trim, finish Antique Linen
 Shown on page 88

Also Available
 LL1536-11 Nicholas Leather Chair

CARING FOR YOUR
LEXINGTON HOME BRANDS
FURNITURE

WOOD

- Avoid prolonged exposure to direct sunlight.
- Do not leave plastic or rubber materials on wood surfaces.
- Wipe up spills immediately.
- Clean with a reliable non-silicone furniture polish. Always rub with the grain.
- Avoid common hazards such as hot dishes (use a protective pad), harsh solvents (nail polish remover, alcohol), and abrasives.

ANTIQUED BRASS AND METAL

- Maintain with regular dusting.
- Wipe up spills immediately.
- Clean with mild soap and water, dry thoroughly. Do not use a brass cleaner (it will damage the lacquer)

UPHOLSTERY

See the Lexington Upholstery and Leather Catalog for more information on cleaning and care for your product. Available from your retailer, by visiting lexington.com or by phoning 336.474.5300, ext. 2. For current fabric information, see your Lexington Upholstery dealer.

CAUTION: Never remove cushion covers for separate dry-cleaning or washing, even though they do have zippers. Do not use bleach or any tumble method cleaning service as this may destroy the backing of the fabric or shrink or otherwise damage the upholstery fabric.

NOTE TO FURNITURE RETAILER: Possession of this catalog does not necessarily constitute authority to purchase and the furnishing of this catalog does not constitute an offer by the Company to sell any of the items contained herein. Lexington Home Brands (LHB) reserves the right to alter specifications or discontinue items at any time without advance notice. All price lists and catalogs remain the property of LHB, and may not be copied or in any way duplicated without the express written consent of LHB, and must be returned, or made available, without cost, to LHB promptly should the relationship be terminated by either party. Failure to observe this restriction may result in the termination of LHB's relationship with the dealer, legal action or both.

CONSTRUCTION NOTE: In order to provide our customers with the best possible quality and/or value, this collection includes items or components produced outside the United States. All Lexington furniture is produced to Lexington design and material specifications and crafted to meet the highest quality standards.

VIEW THE TWILIGHT BAY VIDEO
ON YOUR IPHONE
OR OTHER 3G SMARTPHONE

To experience the video on your mobile device, download and install the free Tag Reader application at www.gettag.mobi



Once the app is installed and launched, simply aim your smart phone camera at the box above and snap it to access the video.



LEXINGTON
HOME BRANDS
lexington.com
facebook.com/lexington
youtube.com/lexingtonfurniture

Copyright ©2010LHB WCP-6M-9/10

Twilight Bay



To purchase a Twilight Bay catalog or locate a retailer in your area, visit lexington.com, or call 336-474-5300 ext 2.

LEXINGTON
HOME BRANDS

lexington.com