

PAVEMENT SIGNS

FORECOURT SIGNS

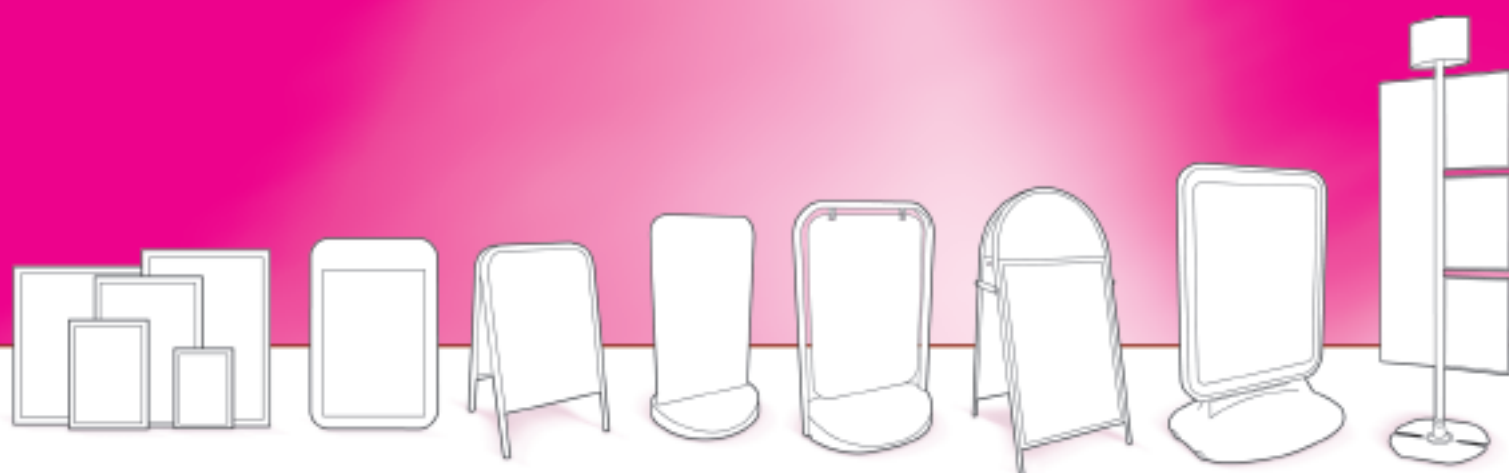
A-BOARDS

PROJECTING SIGNS

POSTER DISPLAY

# SIGN & DISPLAY

## BROCHURE 2007



BROCHURE DISPLAY

LIGHTBOXES

BANNERS

MENU BOARDS

INTERNAL DISPLAY

PAVEMENT SIGNS

FORE COURT SIGNS

A-BOARDS

PROJECTING SIGNS

POSTER DISPLAY

BROCHURE DISPLAY

LIGHTBOXES

BANNERS

MENU BOARDS

INTERNAL DISPLAY

# CONTENTS

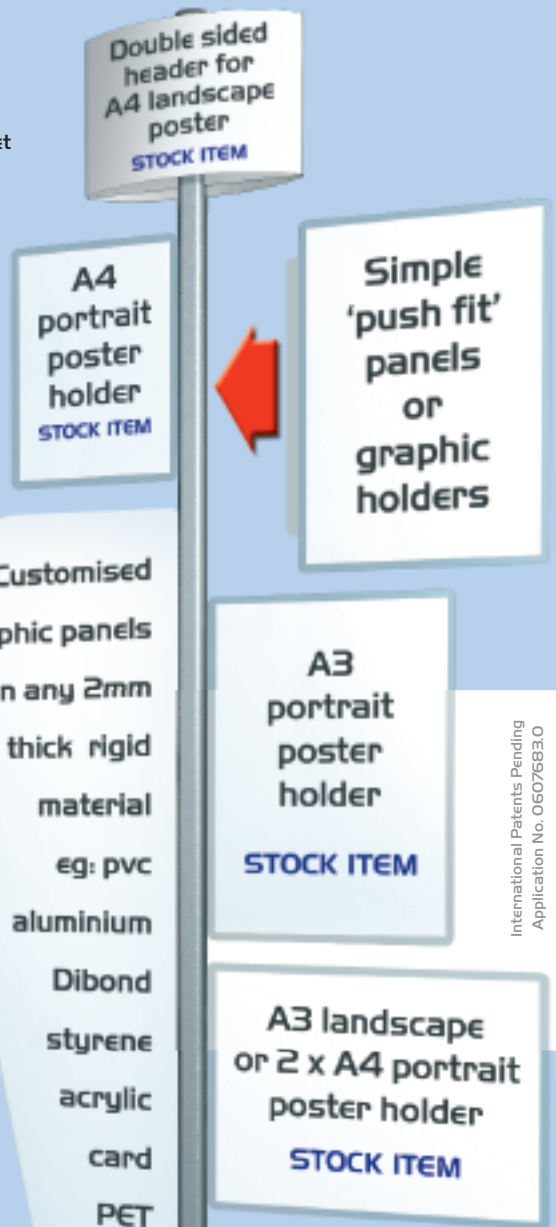
|                                  |   |              |
|----------------------------------|---|--------------|
| <b>NEW FOR 2006 -</b>            | - | <b>1-6</b>   |
| POLEMORPHICS                     |   |              |
| SIGHTMASTER                      |   |              |
| BOOSTER                          |   |              |
| BUDGET A-BOARD & CHALK A-BOARD   |   |              |
| TACTICAL HEADER                  |   |              |
| CORK BOARD                       |   |              |
| HEADLINER (INTERIOR & EXTERIOR)  |   |              |
| SLIDE-IN POSTER FRAME            |   |              |
| BESPOKE SNAPFRAMES               |   |              |
| POSTER HANGER                    |   |              |
| SNAPFRAME COUNTER STANDS         |   |              |
| ILLUMINATED TOTEM                |   |              |
| FREELIGHT PLUS                   |   |              |
| PROMOTIONAL COUNTER              |   |              |
| PROMOSTAND                       |   |              |
| ZIGZAG BROCHURE STAND (PORTABLE) |   |              |
| ZIGZAG BROCHURE STAND            |   |              |
| BROCHURE & MENU HOLDERS          |   |              |
| <b>PAVEMENT SIGNS</b>            | - | <b>7-8</b>   |
| <b>FORECOURT SIGNS</b>           | - | <b>9-10</b>  |
| <b>WATERBASE SIGNS</b>           | - | <b>11</b>    |
| <b>A-BOARDS</b>                  | - | <b>11-12</b> |
| <b>PROJECTING SIGNS</b>          | - | <b>12</b>    |
| <b>POSTER FRAMES</b>             | - | <b>13-14</b> |
| <b>POSTER DISPLAY</b>            | - | <b>15</b>    |
| <b>MENU BOARDS</b>               | - | <b>16</b>    |
| <b>INTERNAL DISPLAY</b>          | - | <b>17</b>    |
| <b>LIGHTBOXES</b>                | - | <b>17-18</b> |
| <b>BROCHURE DISPLAY</b>          | - | <b>18-19</b> |
| <b>BANNER DISPLAY</b>            | - | <b>20</b>    |



NEW FOR 2006

# POLEMORPHICS® DISPLAY SYSTEM

This innovative and patented display system enables any 2mm thick rigid sheet material to grip into a 'pole' without the need for fixings or brackets. Simply push the panel or graphic holder into the slot in the pole and it is gripped securely in place. It is a truly revolutionary display solution that is easily adaptable to suit any interior display situation - retail, banks, car dealerships, travel and estate agents, museums, galleries, hotels, etc



Customised graphic panels in any 2mm thick rigid material eg: pvc aluminium Dibond styrene acrylic card PET

Simple 'push fit' panels or graphic holders

A3 portrait poster holder  
STOCK ITEM

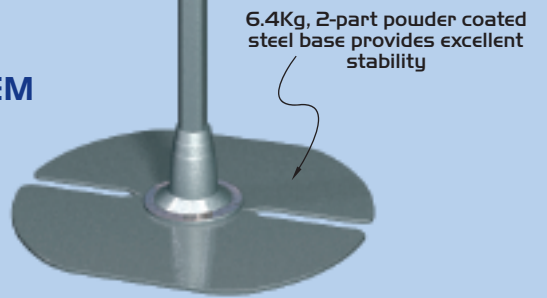
A3 landscape or 2 x A4 portrait poster holder  
STOCK ITEM

International Patents Pending  
Application No. 0607683.0

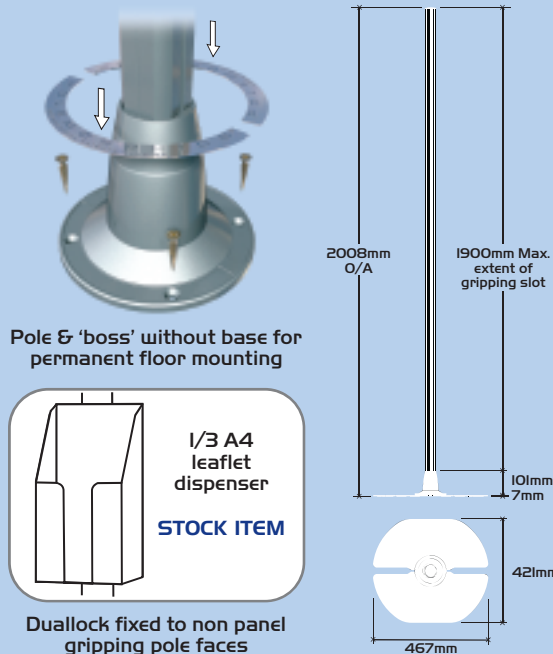
## KEY FEATURES

- Beautifully engineered, strong and safe
- Cheaper than wire or rod display systems, much faster to install and significantly more flexible
- Does not require professional installers and associated costs and inconvenience
- Flexible polycarbonate poster holders offer safety to passers-by and are indestructible - unlike rigid acrylic
- Can be free-standing or permanently fixed
- Easily and quickly updateable by untrained staff

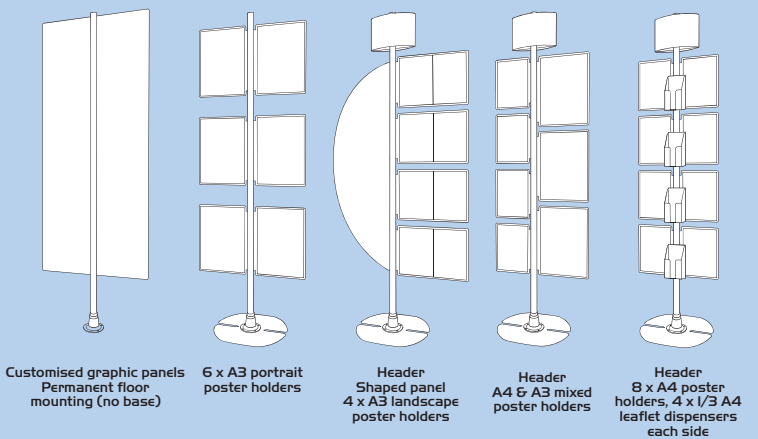
## STOCK ITEM



6.4Kg, 2-part powder coated steel base provides excellent stability



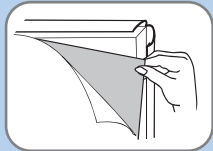
## Display examples:



Note - New Polemorphics pole profiles and standard accessories are part of a continuous development programme

## SIGHTMASTER FORECOURT SIGN

- Double-sided large format poster display solution
- Quick poster change, 'snap open, snap shut' frames
- Water fillable base with in-built wheels for positioning flexibility
- Steel springs enable slight panel movement to aid stability
- Posters protected by antiglare PVC covers
- Stock colour: silver frame, grey base
- Stock sizes: A1, 30"x40" - other sizes made to order



EASY ACCESS TO  
CHANGE POSTERS



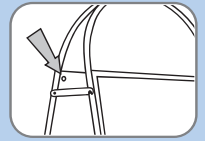
STOCK ITEM

## BOOSTER A-BOARD

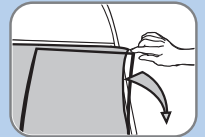
- Attractive poster A-Board boosted by semi-circular header
- Magnetic-edged antiglare poster cover with colour-matched border
- Stock colours: White, Black, Red, Blue, Silver, (20"x30")  
White, Black (A1)

NEW  
LOW  
PRICE

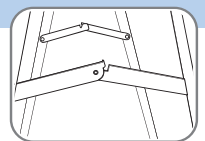
A1  
NOW IN  
STOCK



HIDDEN RELEASE  
HOLE



MAGNETIC CLOSURE



HINGED LOCKING ARMS

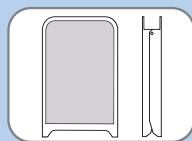
STOCK ITEM



DES. REG. NO. 2025710/2021368

## BUDGET A-BEARD

- Lightweight, low price A-Board for permanent graphics
- Suitable for sheltered locations only
- Panels suitable for vinyl and digitally printing
- Printing area 480 x 815mm
- O/A Size: 500 x 880mm

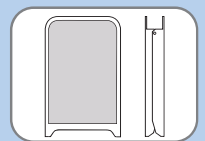


FOLDS FLAT FOR  
EASE OF STORAGE

STOCK ITEM

## BUDGET CHALK A-BEARD

- Lightweight, low price chalk A-Board
- Suitable for sheltered locations only
- Soft chalk or chalk pens
- O/A Size: 500 x 880mm



FOLDS FLAT FOR  
EASE OF STORAGE



EASY WRITE  
CHALKBOARD SURFACE

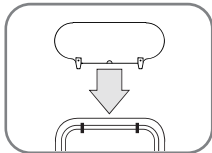
STOCK ITEM



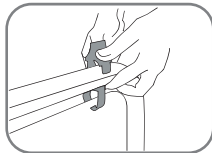
## TACTICAL HEADER PANEL PAVEMENT/FORECOURT SIGN ACCESSORY

- Additional advertising site for minimal cost
- Clips to the top of Swinger 2000, 3000, 4000 pavement signs and Sentinel forecourt signs
- Add vinyl graphics to a standard white unit
- Ideal for highlighting short term promotional messages
- O/A Panel area: 542 x 194mm

STOCK ITEM



CLIPS TO THE TOP OF SWINGER OR SENTINEL FRAME



SIMPLY 'SNAP' INTO POSITION

## CORK BOARD

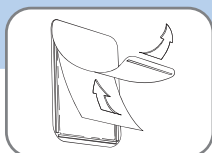
- 9mm wide stylish Aluminium frame
- Available in 4, 6, 9 or 12 x A4 capacity
- Comes complete with pins
- Ideal for office, home, schools, hospitals etc
- Key-hole hangers for wall fixing - portrait or landscape

MADE TO ORDER



## HEADLINER INTERNAL WINDOW POSTER HOLDER

- A2 magnetic PVC window poster holder
- Multiple promotional use with quick and easy poster change
- Sticks to inside of window for quick, effective advertising
- O/A dimensions 500x750mm



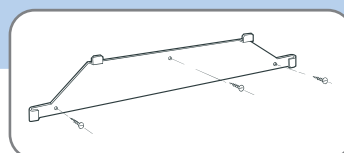
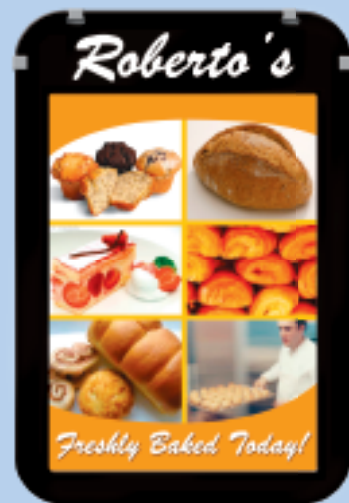
QUICK AND EASY POSTER CHANGE INSIDE SHOP WINDOW



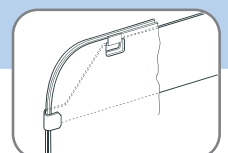
PERMANENT BRANDING AREA

## HEADLINER EXTERNAL WALL MOUNTED POSTER HOLDER

- A2 magnetic poster holder for wall mounted exterior use
- Tough polycarbonate poster 'wallet'
- Wall bracket allows poster holder to be used as required
- Bracket and panel can be purchased as individual items



WALL BRACKET PERMANENTLY SCREWS TO OUTSIDE WALL



HEADLINER IS CLIPPED TO BRACKET DURING STORE OPENING HOURS

NOTE - these products match the Swinger 2000 pavement sign poster panel and so offer styling and processing compatibility

STOCK ITEM

STOCK ITEM

## SLIDE-IN POSTER FRAME (DOUBLE SIDED)

- 25mm silver anodised aluminium frame profile
- Easy, 'slide in, slide out' poster change - side entry
- Hangers provide dual wall mount or hanging capability
- Range of stock sizes in portrait and landscape format
- 2 x antiglare poster cover sheets included

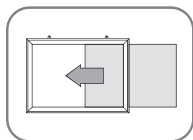


## BESPOKE SNAPFRAME OFFER

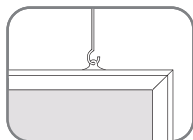
- 15, 25 or 38mm front-loading snap frames
- Rigid anti-glare PVC poster cover
- Available in any custom made size from A5 to 40"x60"
- Silver anodised or any RAL colour
- Woodgrain (25mm only)
- No minimum order, fast turn-round



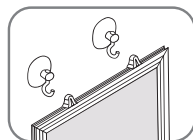
## STOCK ITEM



EASY 'SLIDE IN' POSTER CHANGE



HANG FRAMES FOR MAXIMUM IMPACT



SUCTION CUP HOOKS FOR WINDOW MOUNTING (NOT SUPPLIED)

## EXPRESS MAKE TO ORDER

3-5 working day turn-round on silver anodised & woodgrain (Qtys up to 10)

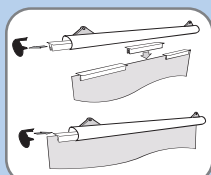
7-10 working day turn-round on colours (Qtys up to 10)

Qtys. over 10 subject to leadtime confirmation

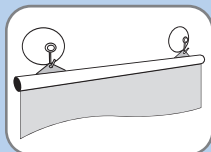
EXPRESS MAKE TO ORDER SERVICE FROM THE UK'S LEADING SNAPFRAME MANUFACTURER

## POSTER HANGER CEILING AND WINDOW DISPLAY

- 20mm wide silver anodised aluminium top and bottom poles
- Black swivel end caps to access poster grip channel in each pole
- Plastic slide-on paper grippers for top and bottom poster edge
- Slide-in hanging tabs for top pole
- Ideal for suspending from ceilings or for window displays
- Stock sizes (poster width), 420, 594, 841, 1016mm  
Numerous other sizes to order



QUICK AND EASY POSTER LOADING

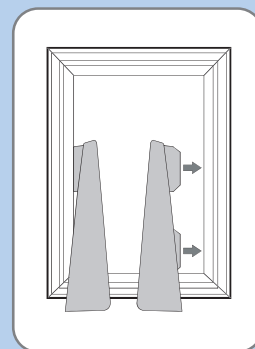


SUCTION CUP HOOKS FOR WINDOW MOUNTING (NOT SUPPLIED)

STOCK ITEM

## SNAPFRAME COUNTER STANDS

- Pair of black polypropylene 'rudder feet'
- Converts our snapframes to free-standing counter, shelf or desk use
- Ideal for any 15 or 25mm profile frames upto A3 in size - portrait or landscape
- Supplied flat pack, cut to shape and creased. Takes seconds to fold into shape and to convert your poster frame

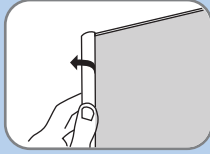


FOLD INTO SHAPE AND SLIDE TAB ON STAND INTO SPACE BETWEEN BACK PANEL AND REAR OF FRAME

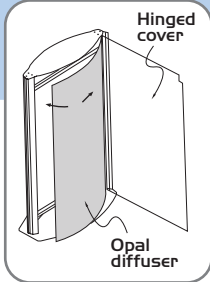
STOCK ITEM

## ILLUMINATED TOTEM

- Double sided free-standing poster lightbox for internal use
- Elegant convex design
- 'Snap open, snap shut' side trim to access posters
- Antiglare poster cover permanently fixed on one edge magnetic closure to other edge
- Poster sizes: 600 x 1700mm  
700 x 1700mm



SNAP OPEN SIDE TRIM TO CHANGE POSTER



OPAL DIFFUSER PANEL CAN BE REMOVED TO ACCESS ELECTRICS

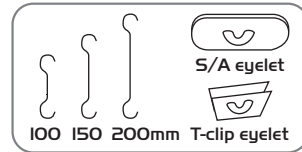


**MADE TO ORDER**

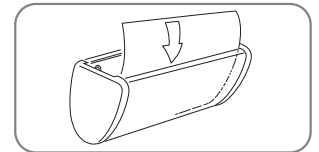
## FREELIGHT PLUS INTERNAL CEILING LIGHTBOX

- High level, high impact branding
- Uses existing in-store lighting, no wiring or power supply required
- Updateable graphic inserts for digital print or vinyl graphics
- Flat packed, assemble in seconds
- Dimensions: 226(D) x 648(L) x 256(H)mm, weight: 0.72Kgs
- Coloured end caps and/or pad printed logos available on 500+ units

**STOCK ITEM**



SUPPLIED WITH 3 PAIRS OF DIFFERENT LENGTH CEILING HOOKS AND 2 STYLES OF 'BUTTON' EYELETS

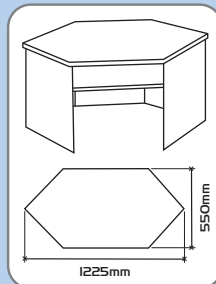


SIMPLY SLIDE IN GRAPHIC PANEL AND FREELIGHT PLUS IS READY TO USE

## PROMOTIONAL COUNTER

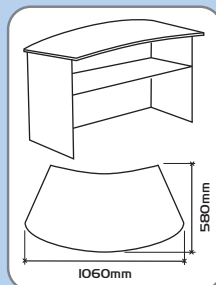
- Portable, fast assembly promo counters
- Strong and sturdy construction in 2 style options
- Choice of wood or white laminate tops
- Silver anodised aluminium with white foam pvc display panels
- Weights: 21.5Kgs (hex), 18Kgs(conv)
- Carry case available

### HEXAGONAL COUNTER



SHELVING DETAIL & DIMENSIONS

### CONVEX COUNTER



SHELVING DETAIL & DIMENSIONS

**MADE TO ORDER**

## PROMOSTAND

- Lightweight, portable promotional counter with header
- Moulded white plastic top, base and shelf
- Silver anodised poles, pvc body & header panels
- Weight: 9Kgs
- Panel dimensions: 1710 x 885mm(body), 920 x 200mm(header)
- Carry case available



BACK VIEW



CARRY CASE

**MADE TO ORDER**



## ZIGZAG BROCHURE STAND (PORTABLE)

- 3 x A4 collapsible design
- Powder coated aluminium (silver) with clear acrylic shelves
- Upright in seconds
- Fully portable, expands to 1.6m high
- Footprint 285 x 310mm
- Folded dimensions 285 x 410 x 420mm
- Weight 8.6Kgs



## ZIGZAG BROCHURE STANDS

- Eye-catching 6 x A4 portrait brochure display with small footprint
- 50 x 25mm oval anodised aluminium leg and 10mm clear acrylic shelves
- Silver powder coated steel base
- Optional header panel and double-leg designs (see page 18)



**NOW IN STOCK**



CARRY CASE FOR PORTABLE ZIGZAG

**STOCK ITEM**

**STOCK ITEM**

**STOCK ITEM**

## BROCHURE & MENU HOLDERS

- Crystal clear injection moulded styrene holders
- Colours and branding available on volume orders
- Other non stock sizes available including businesscard holders



**LOW PRICES**

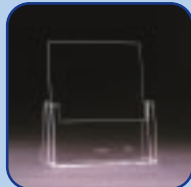
**STOCK ITEM**



1/3 A4 FREE-STANDING  
OPENING: 110x32mm



A5 FREE-STANDING  
OPENING: 160x32mm



A4 FREE-STANDING  
OPENING: 230x32mm



2x 1/3 A4 (SIDE x SIDE)  
FREE-STANDING  
OPENING: 112x32mmx2



2x 1/3 A4 (STACKED)  
FREE-STANDING  
OPENING: 110x45mmx2



4x 1/3 A4 (STACKED)  
FREE-STANDING  
OPENING: 110x32mmx4



1/3 A4 WALL/DUAL MOUNTING  
OPENING: 110x32mm



A5 WALL/DUAL MOUNTING  
OPENING: 160x32mm



A4 WALL/DUAL MOUNTING  
OPENING: 230x32mm



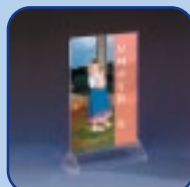
4 x A4 (STACKED)  
FREE-STANDING OR  
WALL MOUNTED WITH  
DIVIDERS TO ALLOW 8x1/3 A4  
OPENING: 230x32x4mm



4 COMPARTMENT  
A4 LANDSCAPE (STACKED)  
WITH DIVIDERS TO ALLOW  
COMBINATION OF POCKET  
SIZES FREE-STANDING  
OR WALL MOUNTED  
OPENING: 330x32mmx4



1/3 A4 INFORMATION/  
MENU HOLDER  
DOUBLE SIDED



A5 INFORMATION/  
MENU HOLDER  
DOUBLE SIDED

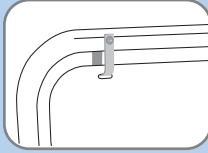


A4 INFORMATION/  
MENU HOLDER  
DOUBLE SIDED

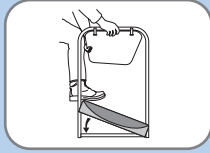
**ECO SWINGER**

- Budget shop-front advertising with 430x625mm display panel
- Recycled PVC base offers exceptional stability
- Polyester powder coated aluminium panel
- 32mm round steel tube frame
- Flat packed, the unit assembles in seconds without tools
- Stock colours: white panel, black base and straps, choice of white or black frame

**STOCK ITEM**



PANEL CLIP DETAIL

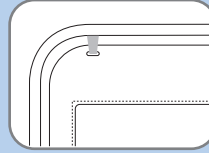


NO TOOLS ASSEMBLY

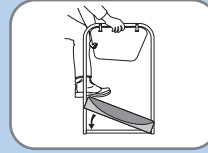
**SWINGER 2000**

- High impact on-street advertising, 500x750mm display area
- Recycled PVC base offers exceptional stability
- Polyester powder coated aluminium panel
- 50x25mm flat sided oval steel tube frame
- New shock absorbing panel clips for optimum sign performance
- Stock colours: white panel, black base and straps, choice of white or black frame

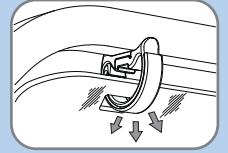
**STOCK ITEM**



NO SHARP CORNERS



NO TOOLS ASSEMBLY



NEW SHOCK ABSORBING PANEL CLIPS

**CONVERSION TABLE**

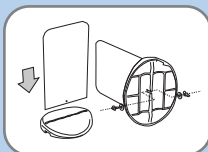
| POSTER SIZE | A4      | A3      | A2      | 20"x30" | A1      | 30"x40"  | A0       | B2      | B1       | B0        | 40"x60"   |
|-------------|---------|---------|---------|---------|---------|----------|----------|---------|----------|-----------|-----------|
| SIZE (MM)   | 210x297 | 297x420 | 420x594 | 508x762 | 594x841 | 762x1016 | 841x1189 | 500x707 | 707x1000 | 1000x1414 | 1016x1524 |



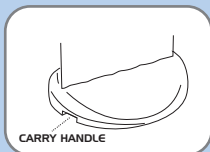
**ECO FLEX**

- Economical awareness builder with 460x783mm display panel
- Rugged recycled PVC base for excellent stability
- Polyester powder coated aluminium panel (special flexible grade)
- Easy assembly, no tools required
- Stock colour: white panel, black base

**STOCK ITEM**



FIXINGS PROVIDED

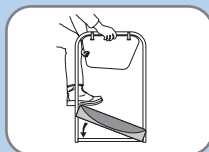


EASY TO POSITION

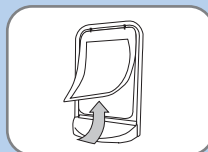
**SWINGER 2000 (A2 POSTER)**

- Pavement sign incorporating A2 poster display facility
- Ideal for displaying tactical and promotional messages, quick and easy to update
- Magnetic edged polycarbonate poster wallet provides excellent weather resistance
- Recycled PVC base ensures exceptional stability
- 50x25mm flat sided oval steel tube frame
- Stock colours: black base and straps, choice of white or black frame and wallet border

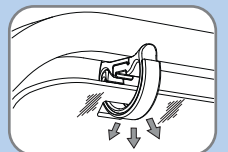
**STOCK ITEM**



NO TOOLS ASSEMBLY



QUICK AND EASY POSTER CHANGE



NEW SHOCK ABSORBING PANEL CLIPS

# SELLING PAVEMENT SIGN

## SWINGER H2000

- High impact on-street advertising, 500x750mm display area
- Same features as Swinger 2000 but with a choice of colourful water-fillable bases
- Polyester powder coated aluminium panel
- 50x25mm flat sided oval steel tube frame
- Available in red, blue and black with colour-matched frame

### STOCK ITEM



WATER FILLED BASE

NO TOOLS ASSEMBLY

NEW SHOCK ABSORBING PANEL CLIPS

▼ Don't forget your Tactical Header, see page 3 for more details

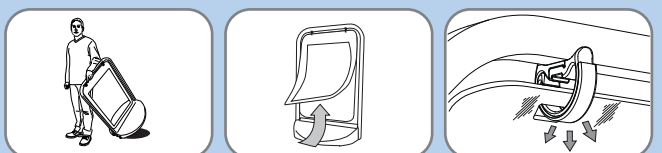


DES. REG. NO. 2071096  
EUROPEAN PATENT NO. EP0809227  
INTERNATIONAL PATENTS PENDING 0608990.8

## SWINGER 3000 (20"x30" POSTER)

- Increased flexibility of permanent graphics plus 20"x30" poster display, quick and easy to update
- Ideal for displaying tactical and promotional messages
- Magnetic edged polycarbonate poster wallet provides excellent weather resistance
- Through-coloured polyethylene base with in-built wheels
- Flat packed, the unit assembles in seconds without tools
- Stock colours: black base and straps, choice of white or black frame and wallet border

### STOCK ITEM



EASY TO POSITION

QUICK AND EASY POSTER CHANGE

NEW SHOCK ABSORBING PANEL CLIPS

## SWINGER 3000

- Large permanent display panel (588x917mm) ideal for high footfall areas
- Rounded styling and low centre of gravity minimise health and safety concerns
- Water-fillable base with in-built wheels allows easy positioning
- 50x25mm flat sided oval steel tube frame
- Flat packed, the unit assembles in seconds without tools
- Stock colours: white panel, black base and straps, choice of white or black frame

### STOCK ITEM



WATER FILLED BASE

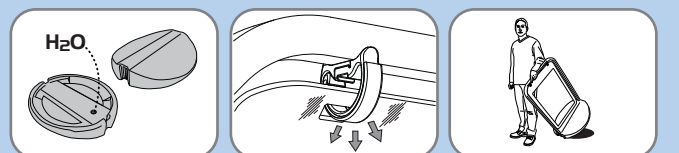
EASY TO POSITION

NEW SHOCK ABSORBING PANEL CLIPS

## SWINGER 4000 (A1 POSTER)

- Large format (A1) poster display solution
- Rounded design minimises health and safety concerns in high footfall areas
- 50x25mm flat sided oval steel tube frame
- Water-fillable base with in-built wheels
- Magnetic edged polycarbonate poster wallet provides excellent weather resistance
- Stock colour: Black base, straps, frame and wallet border

### STOCK ITEM



WATER FILLED BASE

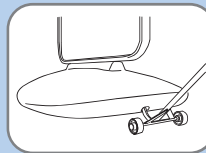
NEW SHOCK ABSORBING PANEL CLIPS

EASY TO POSITION



## SENTINEL POSTER

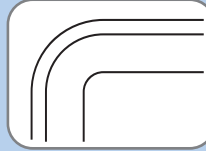
- The optimum forecourt poster sign
- Attractive and flexible large format poster display
- Simple poster change
- Rounded safe styling and water fillable base
- Steel frame: 50x25mm flat sided oval
- Vandal resistant steel back panel
- Magnetic edged polycarbonate glazing panel
- Stock colour: silver frame, grey base



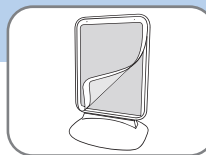
TROLLEY AVAILABLE



EASY TO POSITION



SAFE ROUNDED STYLING



QUICK EASY POSTER LOADING



\* ASK FOR A COPY OF OUR FORECOURT SIGN BUYERS GUIDE

DES. REG. NO. 000190954-0001-0004

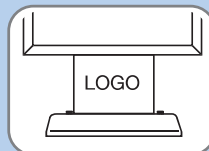
## SENTINEL BANNER

- Large format semi-permanent banner display
- Supplied with white PVC banner – easy to apply graphics
- Superb stability and outdoor performance
- Rounded steel frame and water fillable base
- Steel frame: 50x25mm flat sided oval
- Stock colour: silver frame, grey base

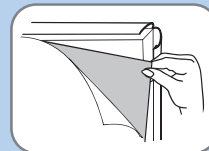


## DEFENDER

- Permanent large format outdoor poster display
- Double-sided 38mm aluminium snapframe for quick poster change
- Concrete base guarantees stability with a small footprint
- Panel life enhanced by permanently fixed correx back panel
- Posters protected by antiglare polypropylene cover
- Stock colour: white frame, grey base



LOGO PANEL



EASY ACCESS TO CHANGE POSTERS

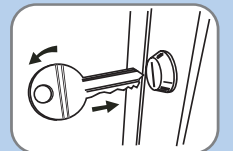


## GUARDIAN

- Lockable large format poster display unit
- Incorporates Slimlok II frame for added security and durability
- Frame profile 52mm, 25mm deep
- Secure poster protection - permanently fixed 2mm PET glazing panel
- Logo panels provide permanent branding opportunity and ownership
- Stock colour: white frame, grey base



LOGO PANEL



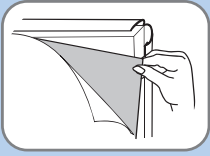
HIGH SECURITY, WEATHER RESISTANT FRAME





## CYCLONE

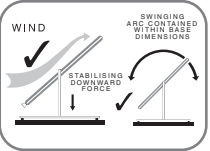
- Safe and secure 40"x60" poster display solution
- Double-sided 38mm aluminium snapframe for quick poster change
- Exceptional stability for a portable sign of this size
- Easily portable by two people for tactical or safety purposes
- Panel life enhanced by permanently fixed correx back panel
- Powder coated steel base, non-slip rubber feet
- Stock colour: white frame and base



QUICK AND EASY POSTER CHANGE



RECOMMENDED METHOD OF MOVING



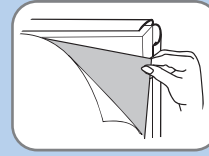
COUNTER BALANCED DISPLAY PANEL



STOCK ITEM

## SIGHTMASTER

- Quick poster change, 'snap open, snap shut' frames
- Water fillable base with in-built wheels for positioning flexibility
- Steel springs enable slight panel movement to aid stability
- Posters protected by antiglare PVC covers
- Stock colour: silver frame, grey base
- Stock sizes: A1, 30"x40" - other sizes made to order
- 40"x60" to be stocked soon



EASY ACCESS TO CHANGE POSTERS

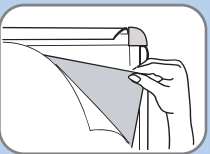
STOCK ITEM



DES. REG. NO. 2006204

## PROMOTER

- Double-sided large format display
- Ideally suited to sheltered environments such as shopping malls
- Quick poster change, 'snap open, snap shut' frame
- Lightweight design, easy to reposition if required
- Silver anodised aluminium frame, antiglare PVC poster covers
- Poster sizes: A1, 500x700mm, 700x1000mm



EASY ACCESS TO CHANGE POSTERS

**MADE TO ORDER**

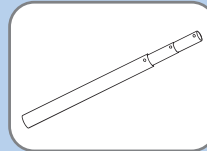


## GIANT POLE

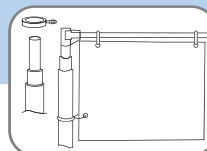
- Huge, attention-grabbing portable banner display system
- Ideal for forecourts, shopping malls, exhibitions and events
- Displays a 1.1m x 4.1m banner (not included)
- Water fillable base ensures complete stability
- Stock colour: silver framework, grey base



WATER-FILLABLE BASE



TELESCOPIC POLE



EASY ASSEMBLY

STOCK ITEM



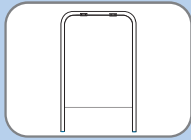
CONVERSION TABLE

| POSTER SIZE | A4      | A3      | A2      | 20"x30" | A1      | 30"x40"  | A0       | B2      | B1       | B0        | 40"x60"   |
|-------------|---------|---------|---------|---------|---------|----------|----------|---------|----------|-----------|-----------|
| SIZE (MM)   | 210x297 | 297x420 | 420x594 | 508x762 | 594x841 | 762x1016 | 841x1189 | 500x707 | 707x1000 | 1000x1414 | 1016x1524 |

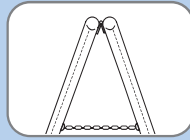
# A-BOARDS

## A-BOARD (500x700MM)

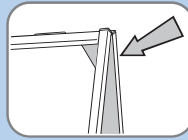
- Aluminium panel, steel tube frame
- Fixing-free panel surface ideal for printed vinyl graphics
- Stock colour: White frame and panel



FOLDS FLAT FOR EFFICIENT STORAGE



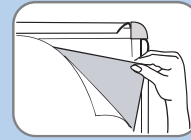
CHROME OVAL CHAIN



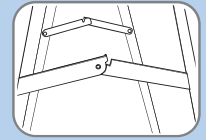
HIDDEN RELEASE HOLE



MAGNETIC CLOSURE



EASY ACCESS TO CHANGE POSTERS



HINGED LOCKING ARMS

## INFORMER (20"x30")

- Simple and effective poster display
- Magnetic edged PVC cover offers increased poster security
- Stock colour: White frame and panel

## A-MASTER (A2, A1, 20"x30")

- Front-loading 'snap open, snap shut' poster frame A-board
- 32mm profile snapframe, antiglare PVC poster cover
- Stock colour: Silver anodised aluminium



STOCK ITEM



STOCK ITEM



STOCK ITEM

# WATERBASE SIGNS

## WATERBASE PYRAMID

- Durable safety sign, fill with water for stability
- Overall size: 357x1165mm
- Graphic size: 337x435mm
- Weight when full: 7.5kg
- Stock colour: Silver (RAL 9006)



NO SHARP CORNERS



WATER-FILLABLE BASE



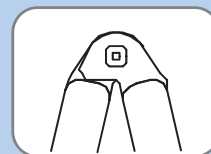
**MADE TO ORDER**

## WATERBASE A-BOARD

- Durable safety sign, fill with water for stability
- Overall size: 400x690mm
- Graphic size: 325x590mm
- Weight when full: 12kg
- Stock colour: Silver (RAL 9006)



WATER-FILLABLE PANELS



ROBUST LOCKING HINGES



**MADE TO ORDER**

### CONVERSION TABLE

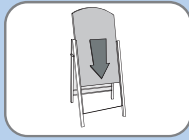
| POSTER SIZE | A4      | A3      | A2      | 20"x30" | A1      | 30"x40"  | A0       | B2      | B1       | B0        | 40"x60"   |
|-------------|---------|---------|---------|---------|---------|----------|----------|---------|----------|-----------|-----------|
| SIZE (MM)   | 210x297 | 297x420 | 420x594 | 508x762 | 594x841 | 762x1016 | 841x1189 | 500x707 | 707x1000 | 1000x1414 | 1016x1524 |

## PREMIER CHALK A-BOARD

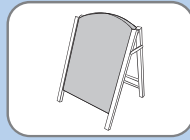
- Superb quality A-Board ideal for pubs, restaurants and cafes
- 539x810mm display area
- Exterior grade MDF panels, rubber hinges, self-levelling feet
- Suitable for use with chalk or liquid chalk pens
- Stock colour: Silver frame, black panels



UNBREAKABLE RUBBER HINGES



SLIDE IN REVERSIBLE PANELS



CURVED TOP PANELS



STOCK ITEM

## BOOSTER (20"x30" & A1)

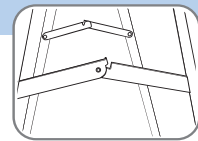
- Attractive poster A-Board boosted by semi-circular header
- Magnetic-edged antiglare poster cover with colour-matched border
- Stock colours: White, Black, Red, Blue, Silver, (20"x30") White, Black (A1)



HIDDEN RELEASE HOLE



MAGNETIC CLOSURE



HINGED LOCKING ARMS



STOCK ITEM

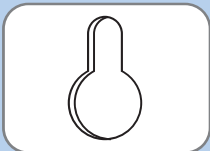


DES. REG. NO. 2025710/2021368

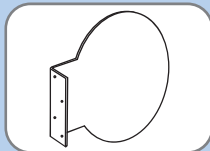
A-BOARDS

## PROJECTING SIGNS

- Double-sided aluminium sign
- 2mm polyester powder coated aluminium
- 50mm flange with key-hole
- Stock colour: White
- Round Projector – display area 495mm diameter
- Rectangular Projector – display area 570x417mm
- Oval Projector – display area 600x400mm



KEY-HOLE DETAIL



ANGLED VIEW



STOCK ITEM



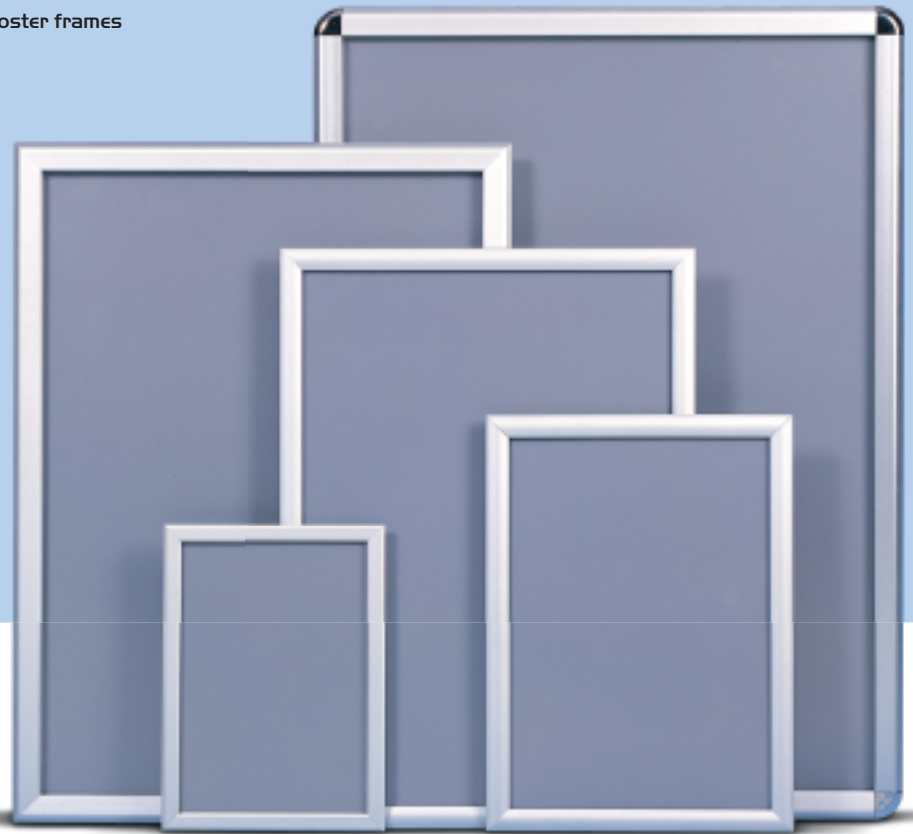
PROJECTING SIGNS

## SNAP FRAMES

- Front-loading 'snap open, snap shut' poster frames
- Quick and easy to change posters
- Silver anodised aluminium finish
- Rigid anti-glare PVC poster cover
- Massive stocks
- Best prices

Did you know that we are now offering an express make to order service on one off custom sizes and colours?

See the Bespoke Snapframe offer on page 4



| FRAME SIZE | CORNER PROFILE |   | CROSS-SECTION | STOCK ITEM<br>(POSTER SIZE) | MADE TO ORDER<br>(POSTER SIZE)  |
|------------|----------------|---|---------------|-----------------------------|---|
| 15MM       |                | — |               | A5, A4, A3                  | A2, A1<br>500x700MM, 20"x30"  |
| 20MM       |                | — |               | —                           | A5, A4, A3, A2, A1<br>500x700MM, 700x1000MM<br>20"x30", 30"x40"                   |
| 25MM       |                | — |               | A4, A3, A2, A1<br>20"x30"   | A5, A0<br>500x700MM, 700x1000MM<br>30"x40", 40"x60"                               |
| 25MM       | —              |   |               | A4, A3, A2                  | A5, A1, A0, 500x700MM<br>700x1000MM, 20"x30"<br>30"x40", 40"x60"                  |
| 26MM       |                |   |               | —                           | A4, A3, A2, A1, A0<br>500x700MM, 700x1000MM<br>20"x30", 30"x40", 40"x60"          |
| 30MM       |                | — |               | —                           | A3, A2, A1, A0, 500x700MM<br>700x1000MM, 1000x1400MM<br>20"x30", 30"x40", 40"x60" |
| 30MM       | —              |   |               | A1, 20"x30"                 | A3, A2, A0, 500x700MM<br>700x1000MM, 1000x1400MM<br>30"x40", 40"x60"              |
| 32MM       |                |   |               | —                           | A3, A2, A1, A0, 500x700MM<br>700x1000MM, 1000x1400MM<br>20"x30", 30"x40", 40"x60" |
| 38MM       |                | — |               | A0, 30"x40", 40"x60"        | A3, A2, A1, 500x700MM<br>700x1000MM, 20"x30"                                      |
| 45MM       |                | — |               | —                           | A3, A2, A1, A0, 500x700MM<br>700x1000MM, 1000x1400MM<br>20"x30", 30"x40", 40"x60" |
| 46MM       |                |   |               | —                           | A3, A2, A1, A0, 500x700MM<br>700x1000MM, 1000x1400MM<br>20"x30", 30"x40", 40"x60" |

### OTHER SIZES AND FINISHES MADE TO ORDER - MINIMUM QUANTITY

#### CONVERSION TABLE

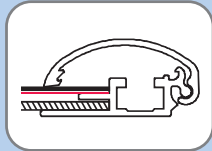
| POSTER SIZE | A4      | A3      | A2      | 20"x30" | A1      | 30"x40"  | A0       | B2      | B1       | B0        | 40"x60"   |
|-------------|---------|---------|---------|---------|---------|----------|----------|---------|----------|-----------|-----------|
| SIZE (MM)   | 210x297 | 297x420 | 420x594 | 508x762 | 594x841 | 762x1016 | 841x1189 | 500x707 | 707x1000 | 1000x1414 | 1016x1524 |



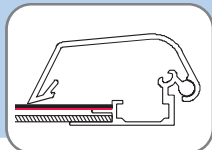
## SECURITY FRAMES

- Additional security to prevent poster theft or vandalism
- Frame is virtually impossible to open without opening tool
- With the tool, poster change is quick and easy
- 25mm profile stock sizes A4, A3, A2, A1, 20"x30"
- 42mm profile stock sizes A0, 30"x40", 40"x60"

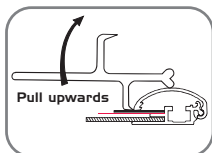
### STOCK ITEM



25MM PROFILE



42MM PROFILE



LEVER TOOL

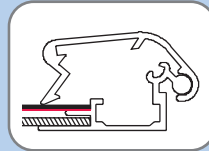


OTHER SIZES MADE TO ORDER - MINIMUM QUANTITY

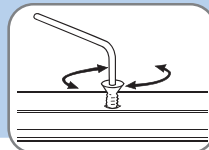
## LOCKABLE SNAP FRAME

- 32mm profile lockable snapframe, high security poster display
- Sequentially opening sides, last side is lockable
- Stops any security concerns, easy to use with tool provided
- Stock sizes A3, A2, A1

### STOCK ITEM



32MM PROFILE



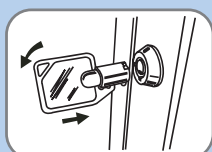
SIMPLE, SECURE FASTENING  
(ALAN KEY SUPPLIED)



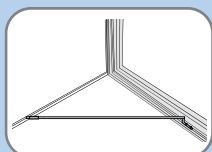
OTHER SIZES MADE TO ORDER - MINIMUM QUANTITY

## SHOWBOARD (SLIMLOK I)

- Lockable large format poster display
- Durable 45mm aluminium frame with hinged door
- Shatterproof permanently bonded door panel
- Interior clips to hold poster in position
- Stock sizes A2, A1, A0, 20"x30", 30"x40", 40"x60"



HIGH SECURITY POSTER DISPLAY



SUPPORTING DOOR ROD

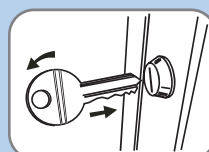


STOCK ITEM

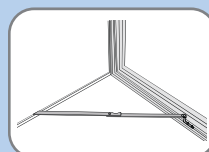
OTHER SIZES MADE TO ORDER - MINIMUM QUANTITY

## SLIMLOK II

- Heavy duty lockable frame for retail exteriors
- Durable 52mm aluminium frame with hinged door
- Shatterproof permanently bonded glazing panel
- Locking door stays ensure safe outdoor poster change
- Interior clips to hold poster in position
- Stock sizes 30"x40", A0, 40"x60"



HIGH SECURITY, WEATHER RESISTANT FRAMES



LOCKING DOOR STAYS



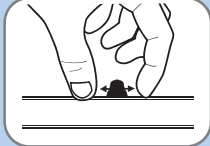
STOCK ITEM

OTHER SIZES MADE TO ORDER - MINIMUM QUANTITY

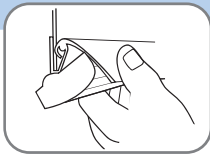
## POSTER CLAMP

- A robust poster display solution for heavier or large posters
- Sold in pairs, extrusion clamps to top and bottom of poster
- Can be wall mounted or suspended
- Ideal for window displays
- Stock sizes (portrait) 500mm, 700mm, 1000mm

### STOCK ITEM



EASY TO ADJUST  
HANGING CLIPS



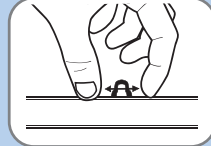
STRONG CLAMPING  
DEVICE TO HOLD LARGER,  
HEAVIER POSTERS



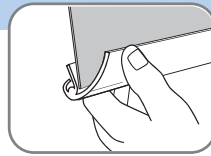
## POSTER SNAP

- Lightweight display solution for paper posters
- Sold in pairs, snap onto the top and bottom of poster
- Stylish silver anodised finish
- Can be wall mounted or suspended for window display
- Stock sizes (portrait) A4, A3, A2, A1

### STOCK ITEM



EASY TO ADJUST  
HANGING CLIPS

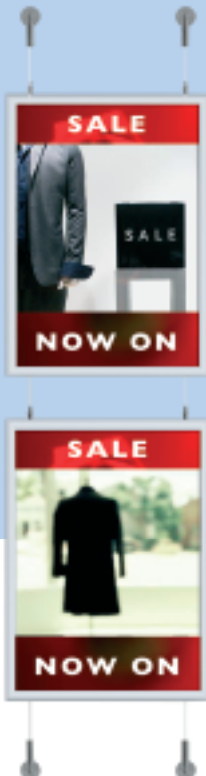


SIMPLE, EASY  
POSTER SNAPPING

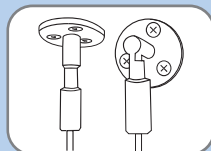


## DOUBLE SIDED SNAP FRAME (WITH WIRE CABLE SYSTEM)

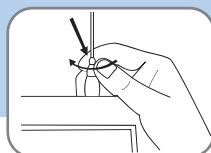
- For ceiling to floor or wall mounting
- Supplied with wire cable and fixing sets
- Attractive window display solution
- Poster frame stock sizes A4, A3, A2 portrait  
Other sizes made to order



### STOCK ITEM



UNIVERSAL WALL, CEILING  
AND FLOOR FIXINGS



EASY FRAME HEIGHT  
ADJUSTMENT

\* FULL SPECIFICATION &  
FIXING GUIDE AVAILABLE  
ON REQUEST

## SHOWBOARD DISPLAY CASE (WITH MAGNETIC OR CORK BACKING)

- Lockable aluminium display case with magnetic or cork back panel
- Suitable for internal or external use (cork recommended for internal use only)
- Each unit includes a free set of magnets/pins as appropriate
- 45mm profile frame with locking door stays
- Standard sizes: 4, 6, 9 or 12 x A4 paper capacity

### STOCK ITEM

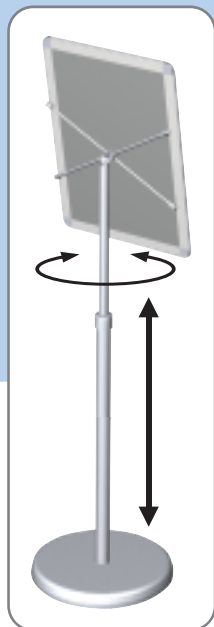


NOTE - these products replace the Cork Noticeboard and Magnetic Noticeboard in the old catalogue

## TELESCOPIC MENUBOARD

- Attractive and flexible information display
- Incorporates an A3 snapframe for quick and easy poster change
- Telescopic option allows flexibility of display height and angle
- Height adjustable between 1000mm and 1450mm

### STOCK ITEM



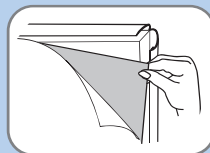
FULLY ADJUSTABLE HEIGHT AND ROTATION



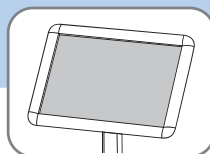
## DECORATIVE MENUBOARD

- Stylish and functional internal messaging
- Rounded base offers improved aesthetics and safety
- Choice of rounded or mitred frames
- Stock sizes: A4, A3 (landscape or portrait)

### STOCK ITEM



EASY ACCESS TO CHANGE POSTERS



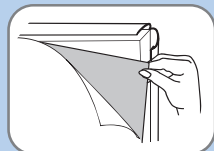
LANDSCAPE ALSO AVAILABLE



## CLASSICAL MENUBOARD (A4)

- A4 portrait or landscape information display
- Snapframe allows quick and easy poster change
- Unit height 1000mm, choice of rounded or mitred corners

### MADE TO ORDER



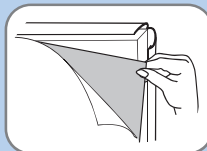
EASY ACCESS TO CHANGE POSTERS



## CLASSICAL MENUBOARD (DOUBLE LEG)

- Traditional information display post, A3 poster display
- Provided with anti-glare PVC poster cover
- Choice of mitred or rounded corners
- A3 landscape unit height is 1200mm

### STOCK ITEM



EASY ACCESS TO CHANGE POSTERS



### CONVERSION TABLE

| POSTER SIZE | A4      | A3      | A2      | 20"x30" | A1      | 30"x40"  | A0       | B2      | B1       | B0        | 40"x60"   |
|-------------|---------|---------|---------|---------|---------|----------|----------|---------|----------|-----------|-----------|
| SIZE (MM)   | 210x297 | 297x420 | 420x594 | 508x762 | 594x841 | 762x1016 | 841x1189 | 500x707 | 707x1000 | 1000x1414 | 1016x1524 |

## D-LIGHT

- Attractive internal lightbox for poster or duratran display
- Side profiles snap open to allow easy image change
- Silver anodised aluminium carcass, 3mm opal acrylic panel
- Sizes: A3, A2, B2, A1, B1, A0, 20"x30", 30"x40"

**MADE TO ORDER**



## EDGELIGHT

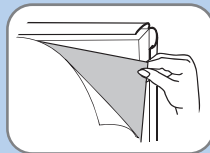
- Slimline illuminated poster display – only 40mm depth
- Quick and easy to change graphics
- Available single or double sided
- Standard unit is portrait, with hanging poles
- Silver anodised aluminium finish
- Sizes: A3, A2, B2, A1, B1, 20"x30", 30"x40"



**MADE TO ORDER**

## ILLUMINATED INFO BOARD

- Info Board is also available with a lightbox
- Choice of single or double sided, with or without shelves
- Single or double sided options available
- Standard poster frame sizes: B2, A1, B1



EASY ACCESS TO CHANGE POSTERS

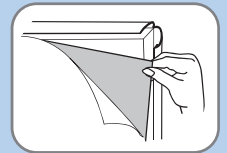


OPTIONAL ACRYLIC SHELVES

**MADE TO ORDER**

## INFO BOARD

- High impact poster and literature display
- Snap open, snap shut poster frame
- Acrylic literature shelves
- Single or double sided options available
- Standard poster frame sizes: B2, A1, B1



EASY ACCESS TO CHANGE POSTERS



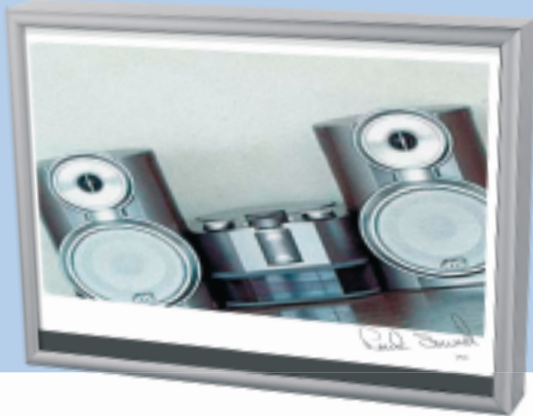
OPTIONAL ACRYLIC SHELVES

**MADE TO ORDER**

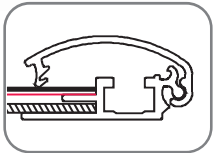


## LIGHTBOX

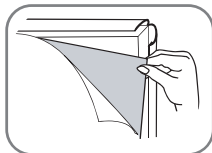
- Eye-catching poster or transparency display
- 25mm snapframe profile allows easy image change
- Aluminium carcass, galvanised steel backing
- Finish: Silver anodised aluminium
- Available single or double sided
- Sizes: from A3 to 700x1000MM



**MADE TO ORDER**



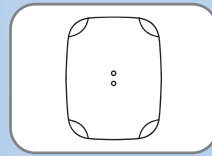
25MM SNAPFRAME PROFILE



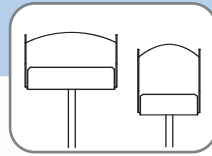
EASY ACCESS TO CHANGE POSTERS

## DECORATIVE BROCHURE STAND

- Eye-catching A4 brochure display solution
- Sturdy aluminium frame with polycarbonate display shelf
- Available for portrait or landscape brochure display
- Stock sizes: A4 portrait or landscape



DECORATIVE POWDER COATED BASE



AVAILABLE IN PORTRAIT OR LANDSCAPE



**STOCK ITEM STOCK ITEM**

## ZIGZAG BROCHURE STAND (PORTABLE)

- Unique design made of Aluminium, with acrylic shelving
- Folded dimensions: 285x410x420mm
- Upright in seconds
- Fully portable, expands to 1.6m high
- Footprint 285x310mm
- Weight 8.5kgs

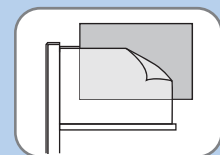
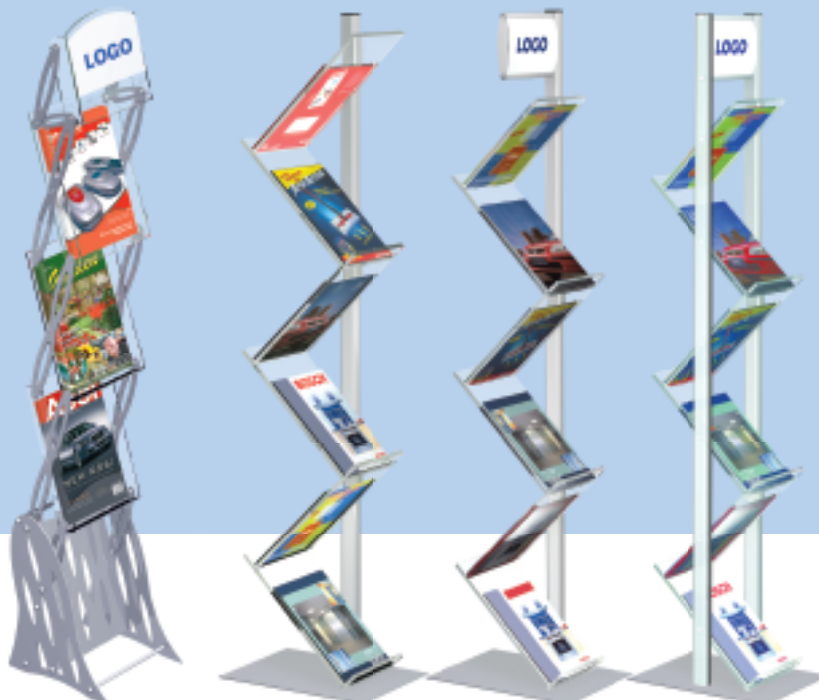


CARRY CASE FOR PORTABLE ZIGZAG

**STOCK ITEM**

## ZIGZAG BROCHURE STANDS

- Eye-catching brochure display with small footprint
- Attractive elliptical legs and 10mm acrylic display shelves
- Choice of single or double leg stands
- Optional header panel for logo display



UPDATEABLE HEADER

**STOCK ITEM**

**STOCK ITEM**

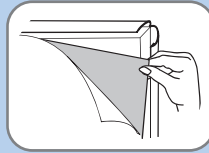
**MADE TO ORDER**

**MADE TO ORDER**

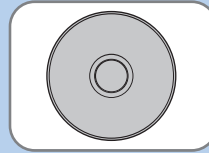


## FREE STANDING LEAFLET DISPLAY

- Modular internal display system
- Central pole can display poster frames and/or literature shelves
- Single or double sided frames and shelves available
- Powder coated steel or acrylic shelf options
- Each shelf has 2 x A4 display capacity
- Poster frames from A4 to A1 can be incorporated



QUICK AND EASY  
POSTER CHANGE



WEIGHTED BASE FOR  
EXTRA STABILITY

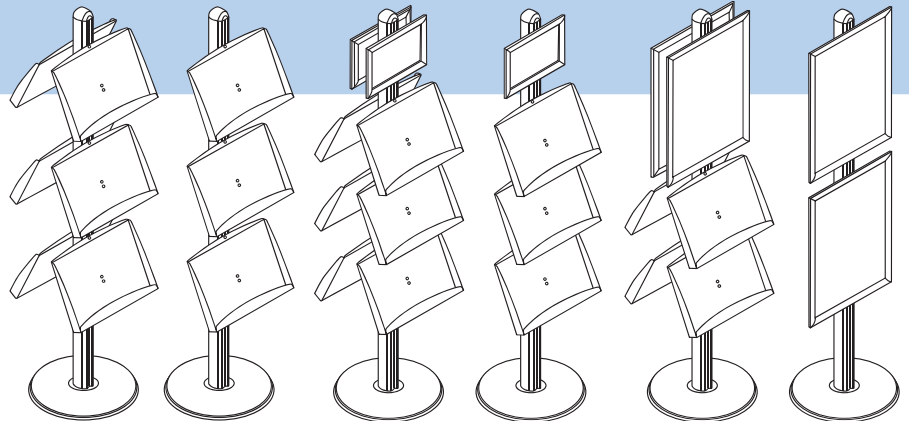
**MADE TO  
ORDER**



STEEL SHELF



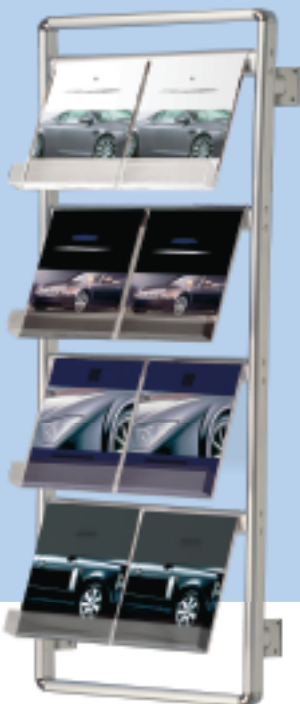
ACRYLIC SHELF



## BROCHURE SETS

- Simple and stylish brochure display
- Aluminium frame with acrylic shelves
- Single or double sided options
- Can display between 8 and 32 A4 brochures
- Available with casters for positioning flexibility
- Wall mounted option also available

**MADE TO  
ORDER**



WALL MOUNTED 4x2 A4



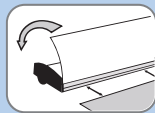
DOUBLE SIDED 4x4 A4



DOUBLE SIDED 4x2 A4

## CROSS BANNER

- Lightweight and flexible banner display
- Quick and easy to assemble
- Adjustable height depending on poster size
- Maximum display height is 2 metres
- Three widths available - 600, 700 or 800mm



'SLIDE IN AND CLAMP' BANNER FIXING

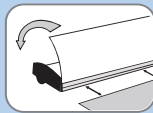


CARRY CASE

**MADE TO ORDER**

## QUICK BANNER (SINGLE SIDED)

- Flexible free-standing banner display
- Easy to assembly within seconds
- Banner clips easily into display system
- Carry case provided for easy portability
- Banner height 2 metres (fixed height)
- Stock sizes: 600, 800 or 1000mm widths



'SLIDE IN AND CLAMP' BANNER FIXING

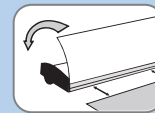


QUICK AND EASY TO ASSEMBLE

**STOCK ITEM**

## QUICK BANNER (DOUBLE SIDED)

- High impact branding with minimal fuss
- Quick and easy to assemble and pack away
- Supplied with durable carry case
- Banner height 2 metres (fixed height)
- Stock sizes: 600, 800 or 1000mm widths



'SLIDE IN AND CLAMP' BANNER FIXING

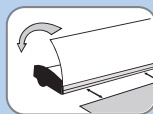


CARRY CASE

**STOCK ITEM**

## SMART BANNER (SINGLE SIDED)

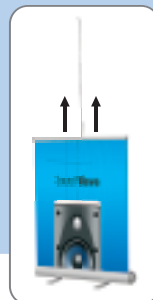
- Spring-loaded roll banner display
- Graphics clip into the system and are stored within unit casing
- Telescopic pole offers adjustable display height between 1m and 2.3m
- Carry case provided for easy portability
- Stock sizes: 800, 1000mm widths



'SLIDE IN AND CLAMP' BANNER FIXING



CARRY CASE

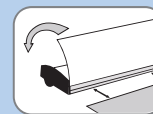


TELESCOPIC ADJUSTABLE HEIGHT

**STOCK ITEM**

## SMART BANNER (DOUBLE SIDED)

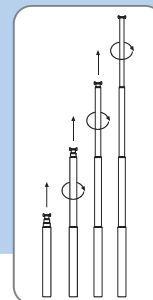
- Double sided branding for additional impact
- Telescopic pole offers adjustable display height
- Carry case provided for easy portability and good maintenance
- Stock sizes: 800, 1000mm widths



'SLIDE IN AND CLAMP' BANNER FIXING



CARRY CASE



TELESCOPIC ADJUSTABLE HEIGHT

**STOCK ITEM**

