

# Installation Manual



# Table of Contents

About This Document.....	1
Special Installation Requirements.....	1
UL Listed Installations.....	1
Basic System Devices .....	1
Household Burglary Alarm System (UL 1023).....	1
Household Fire Warning System (UL 985).....	1
24-Hour Battery Backup (UL 1023 and 985).....	1
Digital Alarm Communicator System (UL 1635).....	1
Installation Planning.....	2
System Information Tables.....	2
Area Names.....	2
Exit/Entry Delay Settings.....	2
Devices, Area Assignments, and Device Names .....	2
Reporting Format and Central Station Numbers.....	3
Voice Transmitter.....	3
Email Alarm Messages.....	3
Access Codes.....	3
Alphanumeric Keypad Programming Functions.....	4
Notes About Programming Functions.....	4
Installation Guidelines.....	5
Running the Required System Wiring.....	5
Installing an RJ31X Jack.....	5
Installation Sequence.....	5
Power Up Control Panel and Clear Memory.....	6
Programming an Alphanumeric Keypad into the Control Panel ....	6
Initial Configuration Menus.....	14
Completing Initial Configuration/Programming.....	15
Changing Settings after Completing Initial Configuration/Programming.....	16
Setting the System to Level 4.....	16
System Menus.....	17-18
Access Level .....	19
Configuration.....	19
Maintenance.....	19
Events Log.....	19
Badges, Access Codes.....	19
Programmable Features.....	19
Programming Access Codes.....	19
Changing Access Level Assignments.....	20
Changing Access Code Alarm Mode Restrictions.....	20
Deleting Access Codes.....	20
Creating Schedules.....	21
Setting Up Special Arming Modes 1 and 2.....	22
Viewing the History/Event Log.....	22
Viewing by Keypad.....	22
Sending History/Log File by Email.....	22
Specifications.....	23

## Regulatory Information

**FCC Part 15** Information to the User Changes or modifications not expressly approved by RSIalarm, Inc. can void the user's authority to operate the equipment.

**FCC Part 15 Class B** This equipment has been tested and found to comply with the limits for a Class B digital device, pursuant to part 15 of the FCC Rules. These limits are designed to provide reasonable protection against interference in a residential installation.

This equipment generates, uses, and can radiate radio frequency energy and, if not installed and used in accordance with the instructions, may cause harmful interference to radio communications. However, there is no guarantee that interference will not occur in a particular installation.

If this equipment does cause harmful interference to radio or television reception, which can be determined by turning the equipment off and on, the user is encouraged to try to correct the interference by one or more of the following measures:

- Reorient or relocate the receiving antenna.
- Increase the separation between the equipment and the receiver.
- Connect the affected equipment and the panel receiver to separate AC power outlets, on different branch circuits.
- Consult the dealer or an experienced radio/TV technician for help.

**ACTA Part 68** This equipment complies with Part 68 of the FCC Rules and the requirements adopted by the ACTA. Located on this equipment is a label that contains, among other information, the registration number and the ringer equivalence number (REN) for this equipment. If requested, this information must be provided to the telephone company. The REN for the panel is 3.6".

### Registration No. US:

The REN is used to determine the maximum number of devices that may be connected to your telephone line. Excessive RENs on a telephone line may result in devices not ringing in response to an incoming call. In most areas, the sum of all device RENs should not exceed five (5.0). To be certain of the number of devices that may be connected to a line, as determined by the total RENs, contact the local telephone company. For products approved after July 23, 2001, the REN for this product is part of the product identifier that has the format US:AAAEO##TXXXX. The digits represented by ## are the REN without a decimal point (e.g. 02 is a REN of 0.2). For earlier products, the REN is separately shown on the label.

A plug and a jack used to connect this equipment to the premises wiring and telephone network must comply with the applicable FCC Part 68 Rules and requirements as adopted by ACTA. A compliant telephone cord and modular plug is provided with this product. It is designed to be connected to a compliant modular jack. See the Installation Manual for details.

Alarm dialing equipment must be able to seize the telephone line and place a call in an emergency situation. It must be able to do this even if other equipment (telephone, answering machine, computer modem, etc.) already has the telephone line in use. To do so, alarm dialing equipment must be connected to a properly installed RJ31X jack that is electrically in series and ahead of all other equipment connected to the same telephone line. Proper installation is depicted in the following diagram. If you have any questions concerning these instructions, consult with your local telephone company or a qualified installer about installing a RJ31X jack and alarm dialing equipment for you.

If this equipment causes harm to the telephone network, the telephone company may temporarily disconnect your service. If possible, you will be notified in advance. When advance notice is not practical, you will be notified as soon as possible.

The telephone company may make changes in its facilities, equipment, operations, or procedures that could affect the operation of the equipment. The telephone company may ask you to disconnect the equipment from the network until the problem has been corrected, or you are sure that the equipment is not malfunctioning.

This equipment may not be used on coin service provided by the telephone company. Connection to party lines is subject to state tariffs.

**This device complies with Part 15 of the FCC Rules.** Operation is subject to the following two conditions: (1) this device may not cause harmful interference, and (2) this device must accept any interference received, including interference that may cause undesired operation.

**RF Exposure Warning:** During operation, the user has to keep a minimum separation distance of 20 cm with the RF devices.

### For Canada:

**Le présent matériel est conforme aux spécifications techniques applicables d'Industrie Canada.**

*L'utilisation de ce dispositif est autorisée seulement aux conditions suivantes : (1) il ne doit pas produire de brouillage et (2) l'utilisateur du dispositif doit être prêt à accepter tout brouillage radioélectrique reçu, même si ce brouillage est susceptible de compromettre le fonctionnement du dispositif.*

L'indice d'équivalence de la sonnerie (IES) sert à indiquer le nombre maximal de terminaux qui peuvent être raccordés à une interface téléphonique. La terminaison d'une interface peut consister en une combinaison quelconque de dispositifs, à la seule condition que la somme d'indices d'équivalence de la sonnerie de tous les dispositifs n'excède pas 5. L'IES de la centrale d'alarme est de 3.6

# About This Document

**This installation manual** provides the necessary information for installing, configuring/programming, testing, and troubleshooting RSIalarm™ security systems.

This installation manual does not provide mounting information for individual devices compatible with the control panel.

This installation manual does not provide complete system operating information.

Please refer to the VIA PRO Users Manual.

**Special installation requirements.** This security system may be installed as a fire warning system, intrusion alarm system or emergency notification system.

Some installations may require configurations dictated by city and/or state codes, insurance, and Underwriters Laboratories (UL). This section describes the various device and system configuration listings.

## UL Listed Installations

**Note** All UL Listings are pending. The following describes the hardware devices and system settings required to meet UL certification.

### **Basic System Devices**

- Control Panel
- Keypad
- Internal Siren

### **Household Burglary Alarm System (UL 1023)**

#### **Basic system, plus:**

- Door Contact
- Camera
- Exit Delay set to 60 seconds
- Entry Delay set to 45 seconds or less
- Siren timeout set to 3 minutes or more

### **Household Fire Warning System (UL 985)**

#### **Basic system, plus:**

- Smoke Detector
- Siren timeout set to 3 minutes or more

24-Hour Battery Backup (UL 1023 and 985)

For 24-hour backup, Digital Alarm Communicator System (UL 1635)

#### **Same as UL 1023 and 985, plus:**

- Primary Phone Number must be programmed

# Installation Planning

It is recommended that you plan the system configuration and programming by writing it all down. This will help speed programming by having all the information in one place. Use pages 2 - 3 to record all system configuration settings.

## System Information Tables

### Area Names

Areas determine how the control panel responds to device assigned to a specific area. Area 1 is always used for all alphanumeric keypads and any entry/exit delay points. Therefore, it is recommended that you name Area 1 as Entry/Exit Area (see table below). Areas 2, 3, and 4 can be configured by the installer as needed. For example, Area 2 could be configured for devices on the main level, Area 3 for devices on the upper level, and Area 4 for devices in the basement. Area names can be alphanumeric, up to 16 characters. Abbreviate where necessary.

Area	Area Name
1	Entry/Exit Area
2	
3	
4	

### Exit/Entry Delay Settings

The exit and entry delay times determine how much time users have to leave or enter when arming or disarming the system. Select delay times from a preset list of choices, based on customer needs.

Delays	Setting				
Exit	15 sec.	30 sec.	45 sec.	1 min.	2 min.
Entry	45 sec.	1 min.	2 min.		

## Devices, Area Assignments, and Device Names

The system can handle up to 24 individual wireless devices (alphanumeric keypads, motion detectors, cameras, sirens, etc.). Each device must be assigned to an area. Device names can be alphanumeric, up to 16 characters (a space counts as a character). Abbreviate where necessary.

Device	Area	Device Name/Location
1	1 2 3 4	
2	1 2 3 4	
3	1 2 3 4	
4	1 2 3 4	
5	1 2 3 4	
6	1 2 3 4	
7	1 2 3 4	
8	1 2 3 4	
9	1 2 3 4	
10	1 2 3 4	
11	1 2 3 4	
12	1 2 3 4	
13	1 2 3 4	
14	1 2 3 4	
15	1 2 3 4	
16	1 2 3 4	
17	1 2 3 4	
18	1 2 3 4	
19	1 2 3 4	
20	1 2 3 4	
21	1 2 3 4	
22	1 2 3 4	
23	1 2 3 4	
24	1 2 3 4	

## Reporting Format and Central Station Numbers

Central station communication and reporting formats, phone numbers, and IP address's (depending on format choice) must be programmed. There are seven reporting formats to choose from.

Each format requires a subscriber (account) number for customer identification at the central monitoring station.

Format	Subscriber Number
Surtec	(8 digits)
Contact ID	(4 digits)
Frontel	(8 digits)
Surtec+Frontel	(8 digits)
Contact ID+Frontel	(4 digits)
Surtec+Video	(8 digits)
Contact ID+Video	(4 digits)

Phone numbers can be up to 11 digits. IP address's are 12 digits and are filled in for your convenience.

Phone/IP No.	Number
Phone No. 1	
Phone No. 2	
Frontel No. 1	
Frontel No. 2	
Frontel IP 1	010.000.000.016
Frontel IP 2	010.000.000.031

## Voice Transmitter

The system can report alarms by digital voice, via the telephone line. Up to three phone numbers can be programmed. Each number can be up to 11 digits.

Voice Trans.	Phone Number
1	
2	
3	

## Email Alarm Messages

The system can send alarm messages and video files to 2 designated email address's.

Email	Address
1	
2	
SMTP	

## Access Codes

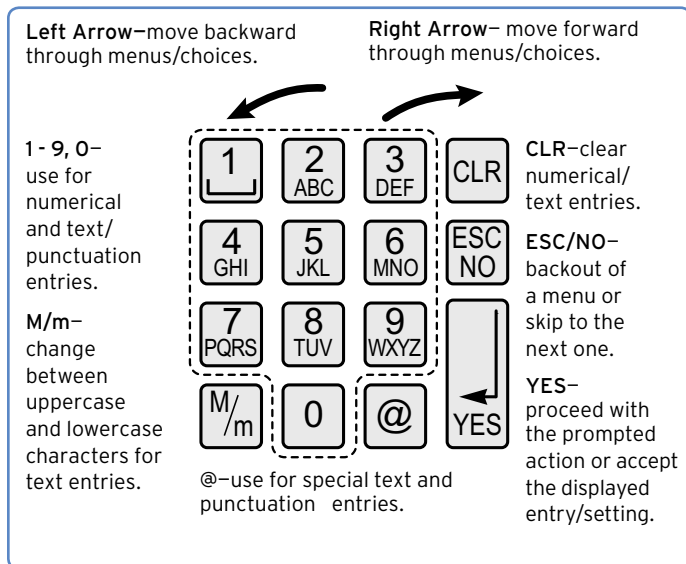
The system can handle up to 20 access codes that can be 4- to 6-digits. Each code must be named and assigned to one of four system levels (described below), that determines the operating limits of the assigned code.

- Level 1—arm, disarm.
- Level 2—arm, disarm, general menus.
- Level 3—arm, disarm, general menus.
- Level 4—general and configuration/programming menus.

Code No	Code Name	Level

## Alphanumeric Keypad Programming Functions

On-site programming is done using a programmed alphanumeric keypad. The keypad functions a specific way when performing system programming. The following diagram describes these functions.



## Notes About Programming Functions

**Timing**—there is a slight delay after pressing a button before the display responds. The more you program, the better you'll get with the timing.

**1 - 9, 0**—the number of presses of each button determines the character displayed. When you see the desired character on the display, pause slightly before proceeding. The following table shows the characters that appear with each button press.

Button	1st press	2nd press	3rd press	4th press	5th press	6th press	7th press	8th press	9th press	10th press	11th press
1	space	.	,	?	!	;	:	1			
2	A	B	C	2							
3	D	E	F	3							
4	G	H	I	4							
5	J	K	L	5							
6	M	N	O	6							
7	P	Q	R	S	7						
8	T	U	V	8							
9	W	X	Y	Z	9						
0	-	+	=	/	¥	_	<	>	( )	0	
@	@	\$	%	&	*	#					

**Left/Right Arrow Buttons**—some system parameters have preset values to choose from (Time, Date, Entry/Exit Delays, etc.). Use these buttons to cycle through the available choices.

**CLR**—press and release to erase one character at a time or press and hold to erase a complete line.

**ESC/NO**—pressing this button when making numerical/ text entries returns you to the previous menu. Pressing this button when prompted to proceed with a specific task skips to the next menu.

**Display**—if there is no keypad activity for 40 seconds, the display goes out to conserve battery power. Pressing any button (except the red panic button) restores the display to the same menu or entry field before it went out.

**Data Entry**—menu displays that appear with a colon (:) indicate when you can enter or select the data or setting. For example, when INSTALLER CODE: is displayed you may enter the desired code.

### Installation Guidelines

It is recommended that you install new systems in the following order:

- > Run the required system wiring (phone line for RJ31X jack).
- > Mount the control panel.
- > Power up control panel and clear memory.
- > Program alphanumeric keypad into the control panel.
- > Program system parameters.
- > Program detectors into the control panel and test them.
- > Mount detectors.
- > Exit programming mode.

**Note:** Detector programming and testing are done in one step. When a device is programmed into the control panel, the alphanumeric keypad displays a message automatically prompting you to test the device.

When installing this security system, it is recommended that you first run the phone line for the RJ31X jack to the control panel location. This is the only wiring requirement for this system.

### Running The Required System Wiring

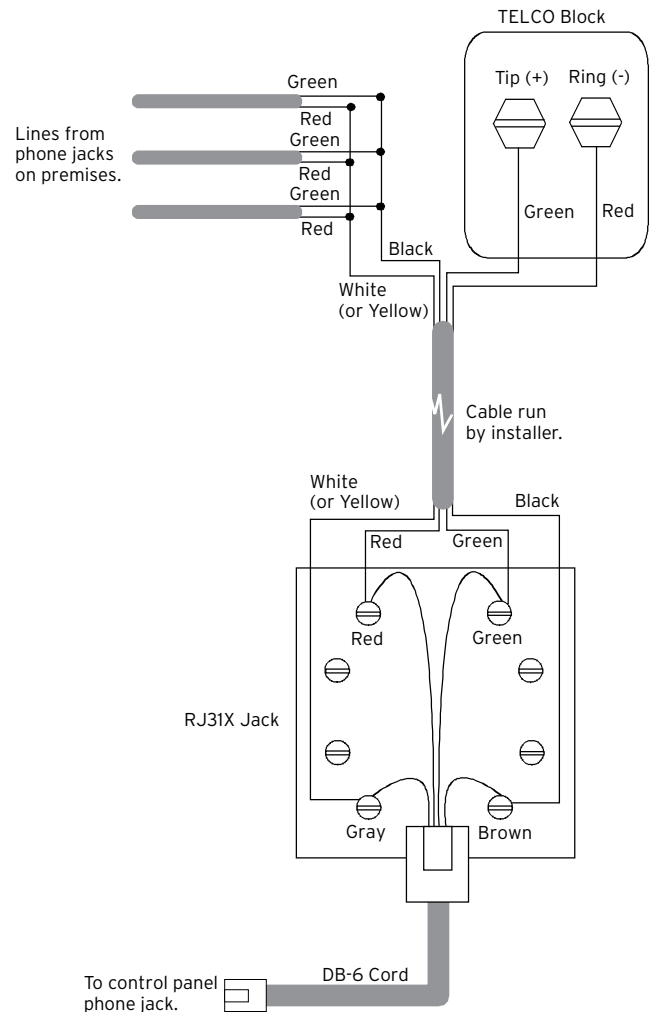
The only system wiring requirement is for a phone line connection. This line should be run before any power up or programming procedures.

### Installing an RJ31X Jack

Systems set up for central station monitoring, Email, and/or voice messaging require that the control panel be connected to the phone line.

It is especially important that monitored systems be connected to the phone line with full line seizure using an RJ31X jack. This type of connection places the control panel ahead of all other devices connected to the phone line. This ensures that the control panel has the priority to seize the phone line and cut off all other phone devices in the event of an alarm, even if the line is in use.

**1. Install the RJ31X jack** for full line seizure as described in the following diagram.



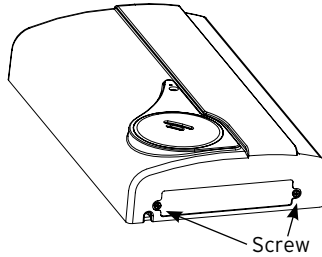
**2. STOP.** Do not connect the DB-6 plug to the control panel phone jack at this time. You will be instructed to do this only after all programming is completed and successful.

# Installation Sequence

## Power Up Control Panel and Clear Memory

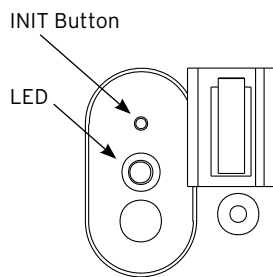
For new installations, always clear the control panel memory after powering it up for the first time, and before programming any devices or other system information.

1. Remove the end screws on the control panel to remove its cover and install the batteries. The LED flashes once after the second battery is installed.

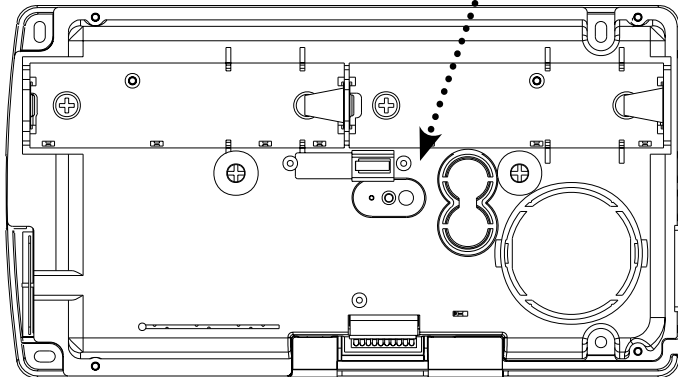


**Note:** The control panel must remain off for programming.

2. Mount the control panel at its intended location using the four mounting holes.



3. Clear control panel memory by using a paper clip end. Press and hold the program button and wait for the LED to flash twice, then release the button. (8 seconds)

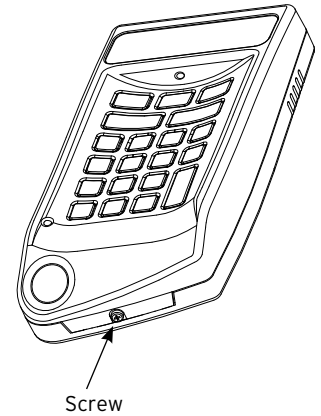


## Programming an Alphanumeric Keypad into the Control Panel

An alphanumeric keypad must be programmed into the control panel first, in order to perform any on-site programming.

**Note:** The control panel assigns alphanumeric keypads to Area 1 (Entry/Exit Delay) automatically and does not prompt you to assign it manually.

1. Install batteries into keypad by removing the bottom screw and separating the base and keypad.

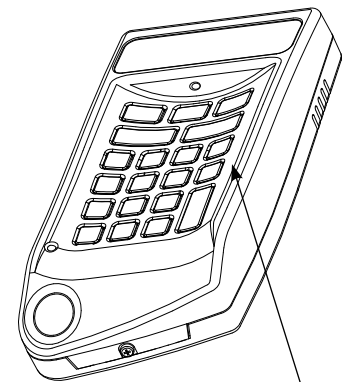


2. Re-attach base with screw.

**Note:** After installing keypad batteries, the keypad LED remains on if the wall tamper is not pushed in (closed). The tamper state does not affect programming.

3. Put the control panel into program mode by pressing and releasing the program button once using a paper clip end. The LED flashes once.

4. On the alphanumeric keypad, press and hold the CLR and ESC/NO buttons together for one second, then release them.



Wait for the keypad display to show KEYBOARD 1 RECORDED.

5. Press YES. The display shows RADIO RANGE TEST?

6. Press YES. The display shows REQUEST IS BEING SENT, then TEST IN PROGRESS. The keypad LED starts flashing once every second.

7. Take the keypad to its intended mounting location and make sure the LED flashes continuously, indicating good communication with the control panel.

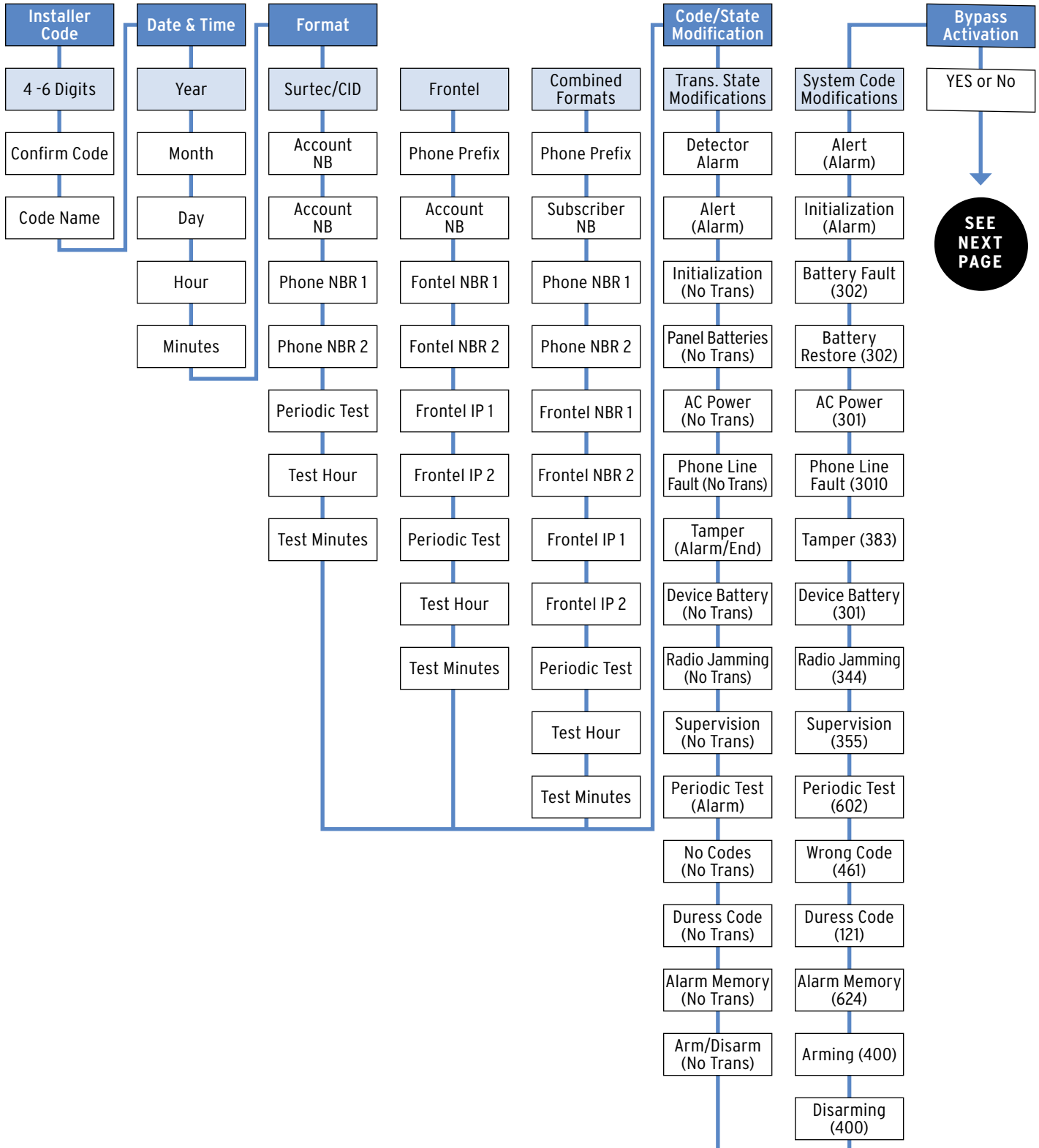
8. Press Yes to end the radio range test, then press ESC/NO. The display shows the following messages: ENTER THE INSTALLER CODE 4 TO 6 DIGITS THEN YES. The display shows CONFIRM CODE. Re-enter the installer code and press yes.



# Installation Sequence

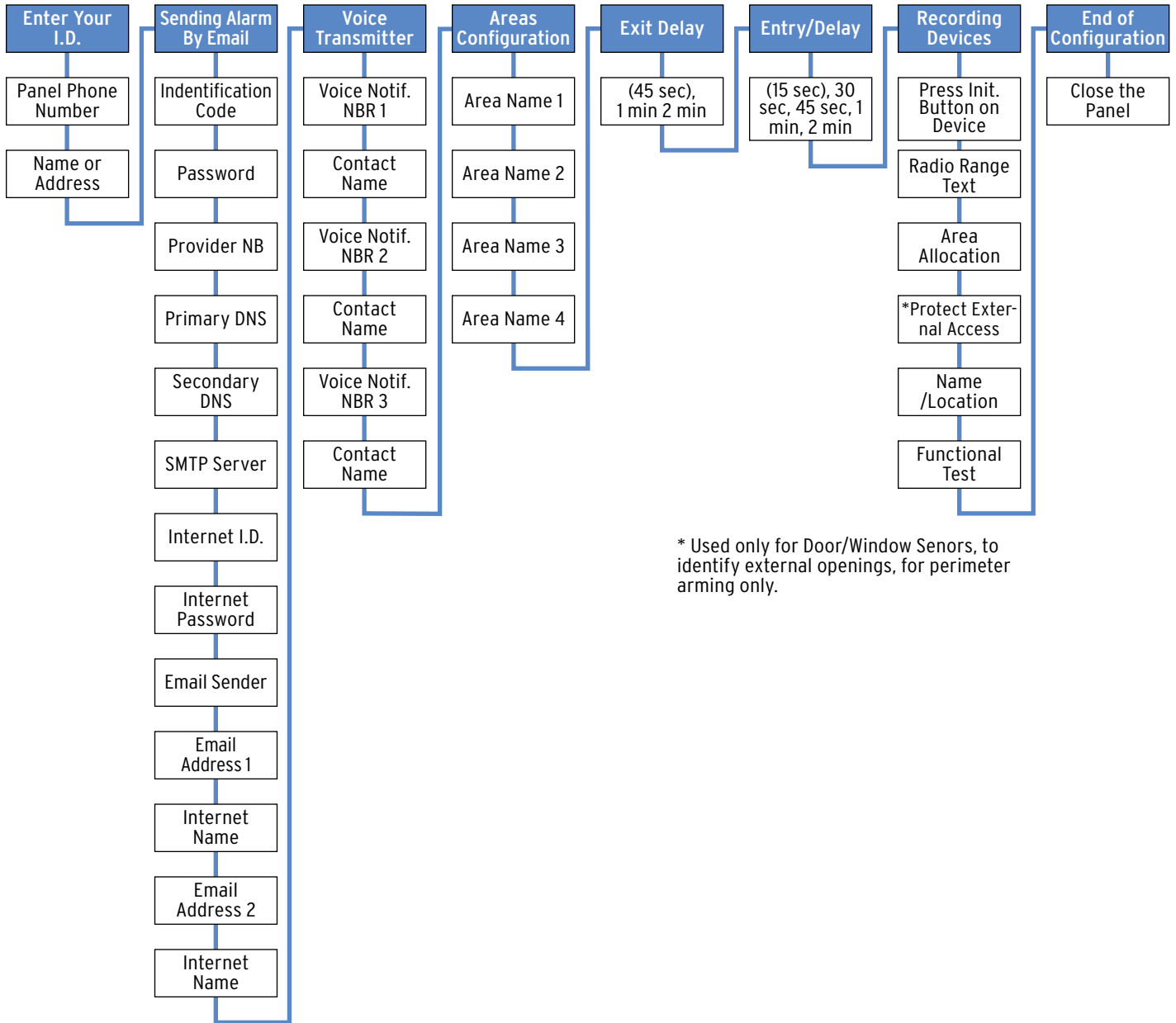
## Initial Configuration Menus

The next two pages show the order in which menus appear for the initial programming session (beginning with the Installer Code). After these pages, the manual continues with details of each menu and the data entries required.



# Installation Sequence

## Initial Configuration Menus - continued Completing Initial Configuration/Programming



\* Used only for Door/Window Senors, to identify external openings, for perimeter arming only.

### Installer Code

Lets you program a code that is used for all programming and maintenance functions. The installer code cannot arm/disarm the system.

**Note:** *An installer code must be programmed in order to program user access codes.*

1. With the display showing INSTALLER CODE: enter the desired code, then press **YES**. The display shows CONFIRM CODE.
2. Re-enter the code and press **YES**. The display shows CODE NAME.
3. Enter a name for the installer code using the alphanumeric buttons (up to 16 characters), then press **YES**. The display shows "Install Entry Complete".

## Adjusting Time and Date

### Data and Time

1. With the display showing DATE (Year):, press the left or right arrow button repeatedly until the correct year number is displayed, then press **YES**.
2. With the display showing DATE (Month):, press the left or right arrow button repeatedly until the correct month number is displayed, then press **YES**.
3. With the display showing DATE (Day):, press the left or right arrow button repeatedly until the correct day number is displayed, then press **YES**.
4. With the display showing DATE (Hour):, press the left or right arrow button repeatedly until the correct hour number is displayed, then press **YES**.
5. With the display showing DATE (Minutes):, press the left or right arrow button repeatedly until the correct minutes number is displayed, then press **YES**. The display shows the programmed time and date RECORDED. Then display shows "Entry Complete".

## Connected To Monitor Station?

[YES = continue, ESC/NO = skip]

### Format

Lets you set up the system for reporting to a central monitoring station. The format selection determines how much information must be programmed.

#### For Surtec and Contact ID formats:

1. With the display showing FORMAT: press either arrow button until SURTEC or CONTACT ID is displayed, then press **YES**.
2. With the display showing PHONE PREFIX: enter the required prefix (such as a 9 with a pause for outside line access) + **YES** or press **ESC/NO** if no prefix is required.

**Note:** *To program a pause, press the @ button six times for the # sign. Each # entry adds a 2-second pause.*

3. With the display showing Account Number: enter the subscriber (account) number (8 digits for Surtec, 4 digits for Contact ID), then press **YES**.
4. With the display showing PHONE NBR 1: enter the primary central station phone number the control panel will dial first to send reports, then press **YES**.
5. With the display showing PHONE NBR 2: press **ESC/NO** to skip to the next step, or enter the secondary phone number the control panel will dial to send reports if attempts using the primary number are unsuccessful, then press **YES**.
6. With the display showing PERIODIC TEST: 24 HOURS, press either arrow button to select the desired interval (1 hour, 12 hours, 24 hours, 48 hours, 7 days, or No Test) the control panel reports a phone communication test to the central monitoring station, then press **YES**.

**Note:** *If you select No Test and press YES, the next menu prompt (CODE/STATE MODIFICATION?) appears.*

7. With the display showing TEST HOUR: press **YES** to accept the default hour displayed, or press either arrow button until the desired hour is displayed, then press **YES**.
8. With the display showing TEST (MINUTES): press **YES** to accept the default minutes displayed, or press either arrow button until the desired minute is displayed, then press **YES**.

### For Frontel Format

1. With the display showing FORMAT:, press either arrow button until FRONTEL is displayed, then press **YES**.
2. With the display showing PHONE PREFIX:, enter the required prefix (such as a 9 with a pause for outside line access) + **YES** or press **ESC/NO** if no prefix is required.  
*Note: To program a pause, press the @ button six times for the # sign. Each # entry adds a 2-second pause.*
3. With the display showing SUBSCRIBER NB: enter the subscriber (account) number, (up to 16 digits), then press **YES**.
4. With the display showing FRONTEL NBR 1:, enter the primary phone number the control panel will dial first to send reports to Frontel Automation Software supported central stations, then press **YES**.
5. With the display showing FRONTEL NBR 2:, press **ESC/NO** to skip to the next step, or enter the secondary phone number the control panel will dial to send reports if attempts using the primary number are unsuccessful, then press **YES**.
6. With the display showing FRONTEL IP 1:, enter the primary IP number 010.000.000.016, then press **YES**.
7. With the display showing FRONTEL IP 2:, enter the secondary IP number 010.000.000.031, then press **YES**.
8. With the display showing PERIODIC TEST: 24 HOURS, press either arrow button to select the desired interval (1 hour, 12 hours, 24 hours, 48 hours, 7 days, or No Test) the control panel reports a phone communication test to the central monitoring station, then press **YES**.  
*Note: If you select No Test and press YES, the next menu prompt (CODE/STATE MODIFICATION?) appears.*
9. With the display showing TEST HOUR: press **YES** to accept the default hour displayed, or press either arrow button until the desired hour is displayed, then press **YES**.
10. With the display showing TEST (MINUTES): press **YES** to accept the default minutes displayed, or press either arrow button until the desired minute is displayed, then press **YES**.

### For Combined Format

#### Surtec+Frontel, Contact ID+Frontel, Surtec+Video, Contact ID+Video:

1. With the display showing FORMAT:, press either arrow button until the desired combination format is displayed, then press **YES**.

2. With the display showing PHONE PREFIX:, enter the required prefix (such as a 9 with a pause for outside line access) + **YES** or press **ESC/NO** if no prefix is required.  
*Note: To program a pause, press the @ button six times for the # sign. Each # entry adds a 2-second pause.*
3. With the display showing SUBSCRIBER NB: enter the subscriber (account) number, (8 digits for Surtec for mats, 4 digits for Contact ID formats), then press **YES**.
4. With the display showing PHONE NBR 1: enter the primary central station phone number the control panel will dial first to send reports, then press **YES**.
5. With the display showing PHONE NBR 2: press **ESC/NO** to skip to the next step, or enter the secondary phone number the control panel will dial to send reports if attempts using the primary number are unsuccessful, then press **YES**.
6. With the display showing FRONTEL NBR 1: enter the primary phone number the control panel will dial first to send reports to Frontel Automation Software supported central stations, then press **YES**.
7. With the display showing FRONTEL NBR 2: press **ESC/NO** to skip to the next step, or enter the secondary phone number the control panel will dial to send reports if attempts using the primary number are unsuccessful, then press **YES**.
8. With the display showing FRONTEL IP 1: enter the primary IP number 010.000.000.016, then press **YES**.
9. With the display showing FRONTEL IP 2: enter the secondary IP number 010.000.000.031, then press **YES**.
10. With the display showing PERIODIC TEST: 24 HOURS, press either arrow button to select the desired interval (1 hour, 12 hours, 24 hours, 48 hours, 7 days, or No Test) the control panel reports a phone communication test to the central monitoring station, then press **YES**.  
*Note: If you select No Test and press YES, the next menu prompt (CODE/STATE MODIFICATION?) appears.*
11. With the display showing TEST HOUR: press **YES** to accept the default hour displayed, or press either arrow button until the desired hour is displayed, then press **YES**.
12. With the display showing TEST (MINUTES): press **YES** to accept the default minutes displayed, or press either arrow button until the desired minute is displayed, then press **YES**.

### Code/State Modification?

[YES = continue, ESC/NO = skip]

#### Tran. State Modification

Lets you change the control panel default settings for how and/or whether certain conditions are reported to the central station. There are three possible settings for each state:

**Alarm**—alarm reports only

**Alarm/End**—alarm and restore reports

**No Trans**—no report

There are 15 states described below with their default setting that can be changed.

- > DEVICE—Alarm
- > ALERT —Alarm
- > INITIALIZATION —No Trans
- > PANEL BATTERIES—No Trans
- > AC POWER—No Trans
- > PHONE LINE FAULT—No Trans
- > TAMPER—Alarm/End
- > DEVICE BATT.—No Trans
- > RADIO JAMMING—No Trans
- > SUPERVISION—No Trans
- > PERIODIC TEST—Alarm
- > WRONG CODES—No Trans
- > DURESS CODE—No Trans
- > ALARM MEMORY—No Trans
- > ARM/DISARM—No Trans

1. With the display showing TRANS. STATE MODIFICATION: press **Yes**. The display shows the first state/setting DETECTOR ALARM.
2. Press **YES** to change this setting or press either arrow button until the desired state/setting is displayed, then press **YES**. A colon (:) appears indicating that you may now change the current setting.
3. Press either arrow button until the desired setting appears, then press **YES**. The colon disappears and the the new setting is displayed.
4. Repeat steps 2 and 3 for all other setting changes.
5. When all desired changes are done, press **ESC/NO**. The display returns to TRANS. STATE MODIFICATION.
6. Press the right arrow button once. The display shows ALARM CODE MODIFICATION.

#### Alarm Code Modification

Lets you change the default alarm reporting code of each system device.

**Note:** *Although this menu appears at this point in the cycle, pressing YES produces the display message NO EQUIPMENTS RECORDED. After devices (equipment) and all initial system programming are programmed (recorded) into control panel memory, you must start a new programming session to modify these codes.*

#### System Code Modification

Lets you change the system codes the control panel reports to the central station. There are 16 codes described below with their default settings that can be changed.

- > ALERT—code 120
- > INITIALIZATION—code 305
- > BATTERY FAULT—code 302
- > BATTERY RESTORE—code 302
- > AC POWER—code 301
- > PHONE LINE FAULT—code 351
- > TAMPER—code 383
- > DEVICE BATTERY—code 384
- > RADIO JAMMING—code 344
- > SUPERVISION—code 355
- > PERIODIC TEST—code 602
- > WRONG CODES—code 461
- > DURESS CODE—code 121
- > ALARM MEMORY—code 624
- > ARMING—code 400
- > DISARMING—code 400

1. With the display showing ALARM CODE MODIFICATION, press the right arrow button once. The display shows SYSTEM CODE MODIFICATION.
2. Press **YES**. The display shows ALERT CODE 120
3. Press either arrow button until the desired system code is displayed, then press **YES**. A colon (:) appears indicating that you may now change the current setting.
4. Enter the desired 3-digit code, then press **YES**. The colon disappears and the new setting is displayed.
5. Repeat steps 3 and 4 for all other setting changes.
6. When all desired changes are done, press **ESC/NO**. The display returns to SYSTEM CODE MODIFICATION.

### Bypass Activation

Lets you set up the system so operators in Frontel supported central stations can initiate contact with and access the system.

1. With the display showing BYPASS ACTIVATION?, press **YES** or **ESC/NO**.

### Sending Alarm By Email

Lets you enter an Email address so the customer can receive alarm notifications by the Internet.

**Note:** *Pressing ESC/NO displays the message EMAIL ALARM DISABLED and skips to the next menu.*

1. With this menu displayed, press **YES** to program an Email address. The display shows: INTERNET ACCESS PARAMETERS, then IDENTIFICA. CODE.
2. Enter a customer identification code (up to 15 characters), then press **YES**. The display shows PASSWORD:.
3. Enter the customer password, then press **YES**. The display shows: PROVIDER NO:.
4. Enter the customer's Internet provider phone number, then press **YES**. The display shows PRIMARY DNS:.
5. Enter the first DNS (IP address), then press **YES**. The display shows SECONDARY DNS.
6. Enter the second DNS (IP address), then press **YES**. The display shows SMTP SERVER:.
7. Enter the SMTP server address (up to 15 characters), then press **YES**. The display shows INTERNET I.D.:.
8. Enter the Internet (Email) ID address, then press **YES**. The display shows INTERNET PASS:.
9. Enter the Email password, then press **YES**. The display shows EMAIL SENDER:.
10. Enter the sender's Email address, then press **YES**. The display shows EMAIL ADDRESS 1.
11. Enter the first recipient's Email address, then press **YES**. The display shows INTERNET NAME:.
12. Enter the recipient's internet name, then press **YES**. The display shows EMAIL ADDRESS 1 RECORDED!, then EMAIL ADDRESS 2.
13. Enter the second recipient's Email address, then press **YES**. The display shows INTERNET NAME:.
14. Enter the recipient's internet name, then press **YES**. The display shows EMAIL ADDRESS 2 RECORDED!

## Enter Your I.D.

### Your Phone Number

1. With the display showing PANEL PHONE NUMB:, enter the customer site phone number, then press **YES**. The display shows NAME OR ADDRESS.
2. Enter the customer name and address, then press **YES**. The display shows "Name and Address Complete".

## Using The Voice Transmitter

Lets you set up the system for voice reporting to as many as three customer designated phone numbers. The report includes the device, zone, alarm type, time, and date.

During an alarm, the control panel makes three attempts using the first phone number. If all attempts are unsuccessful, the control panel waits for one minute and makes three more attempts using the second phone number. If these attempts are unsuccessful, the control panel waits for one minute and makes three more attempts using the third phone number.

Follow these steps to enter the destination phone numbers, contact /recipient names, passwords, and name assigned to each password.

**Note:** *Pressing ESC/NO displays the message VOICE TRANS. DISABLED and skips to the next menu.*

1. With this menu displayed, press **YES** to set up the voice transmitter. The display shows VOICENOTIF . PHONE NBR 1:.
  2. Enter the first phone number destination, then press **YES**. The display shows CONTACT NAME.
  3. Enter the appropriate contact name, then press **YES**. The display shows "Entry Complete", then VOICENOTIF . PHONE NBR 2:.
- Note:** *If only programming one voice transmitter number, press ESC/ NO to skip programming the next two voice transmitter numbers.*
4. Enter the second phone number destination, then press **YES**. The display shows CONTACT NAME:.
  5. Enter the second appropriate contact name, then press **YES**. The display shows "Entry Complete", then VOICENOTIF . PHONE NBR 3:.
- Note:** *If only programming two voice transmitter numbers, press ESC/NO to skip programming the third voice transmitter number.*
6. Enter the third phone number destination, then press **YES**. The display shows CONTACT NAME:.
  7. Enter the third appropriate contact name, then press **YES**. The display shows "Entry Complete".

## Area Configuration

### Area Name 1

Lets you name each of the four areas used for identifying the different areas of the installation.

**Area 1** is predefined from the factory for alphanumeric keypads and any entry/exit delay points. Area 1 should be named appropriately to identify it as the delay area.

**Areas 2, 3, and 4** have no predefined default properties and can be named as required for the installation. For example,

**Area 2** could be configured and named as Main Level, Area 3 Upper Level, and Area 4 Basement.

1. With the display showing AREA NAME 1: enter the desired name, then press YES. The display shows [NAME], AREA 1 RECORDED, then AREA NAME 2.
2. Enter the desired area 2 name, then press YES. The display shows [NAME], AREA 2 RECORDED, then AREA NAME 3.
3. Enter the desired area 3 name, then press YES. The display shows [NAME], AREA 3 RECORDED, then AREA NAME 4.
4. Enter the desired area 4 name, then press YES. The display shows [NAME], AREA 4 RECORDED.

### Exit Delay

Determines the amount of time users have to leave through a delay door without causing an alarm.

**Note:** *For UL Listed installations, the Exit Delay must be set to 60 seconds or less.*

- > With the display showing EXIT DELAY: 45 sec, press **YES** to accept the default setting, or press either arrow button until the desired exit delay time appears (45 sec, 1 min, or 2 min), then press Yes.

### Entry Delay

Determines the amount of time users have to disarm the system upon entry, before an alarm occurs.

**Note:** *For UL Listed installations, the Entry Delay must be set to 45 seconds or less.*

- > With the display showing ENTRY DELAY: 15 sec, press **YES** to accept the default setting, or press either arrow button until the desired entry delay time appears (15 sec, 30 sec, 45 sec, 1 min, or 2 min), then press Yes.

### Recording Equipment

#### Press Init. Butt. On Equipment

Lets you program system devices into the control panel memory.

1. Install batteries into all system devices\* (refer to the installation instructions). Make sure bases are attached to devices to secure the tamper switches.
2. Press and release the program button on the desired device using a paper clip end (see graphics on right side of page for device program button locations). The device LED starts flashing. Wait for the keypad display to show "Device Type 1 Recorded".

3. Press YES. The display shows RADIO RANGE TEST? Press YES again. The device LED starts flashing and the display shows TEST IN PROGRESS.

**Note** *The Radio Range Test prompt does not appear when programming keyfobs.*

4. Take the device to its intended mounting location and make sure the LED flashes once every second, indicating good communication with the control panel.
5. Press YES to end the radio range test, then press ESC/NO.

6. The display now shows AREA ALLOCATION: AREA:1. Press either arrow button repeatedly until the desired area number appears, then press YES.

**Note** *The Area Allocation prompt does not appear when programming keyfobs or sirens.*

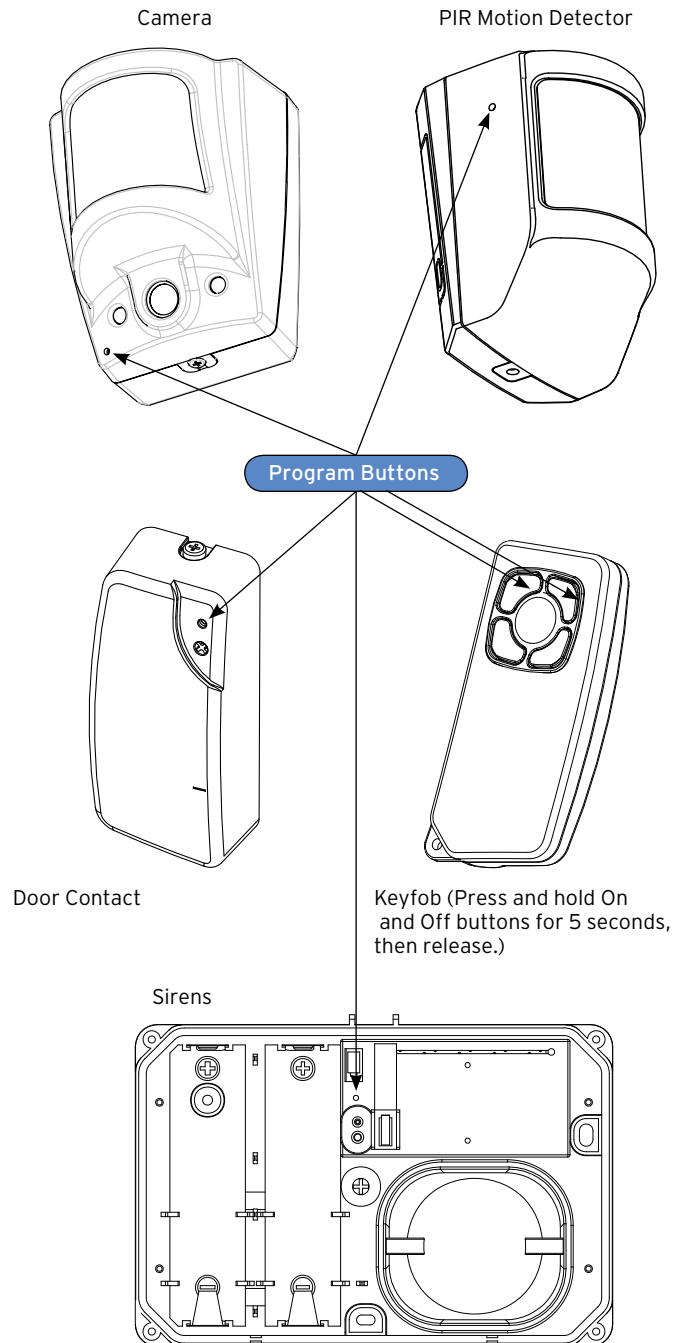
7. The display shows PROTECT AN EXTERNAL ACCESS? Press YES or ESC/NO, whichever is appropriate for this device.

**Note** *The Protect An External Access prompt only appears when programming door contacts.*

8. The display shows NAME + LOCATION. Enter the appropriate device name/location (up to 16 characters), then press YES. The display shows the device number and name for your verification.

**Note** *The Name + Location prompt does not appear when programming keyfobs or sirens.*

9. Press YES. The display shows FUNCTIONAL TEST? Press YES again and verify the device operation. For example, waving your hand in front of a motion detector should activate its LED indicating detection.



Keyfob (Press and hold On and Off buttons for 5 seconds, then release.)

Moving a magnet away from a door contact should activate its LED indicating detection.

10. Press YES to end functional test.
11. The display shows RECORDING NEW EQUIPMENTS? Press YES to continue programming remaining devices.

\* All installation instructions, manuals are available at our web site [www.videofied.com](http://www.videofied.com). Go to dealer support, click on "To Login". User name = "your first name", the Password = "videofied". Then click on "Technical Documentation" you now have access to all RSI installation sheets and manuals



## Completing Initial Configuration/Programming

After the last device is programmed, press ESC/NO. The display shows END OF CONFIGURATION, then changes to CLOSE THE PANEL.

### STOP!

It is important that you first mount all devices, then secure the cover on the control panel. Failure to follow this order of tasks will cause a tamper condition from devices.

1. With the display showing CLOSE THE PANEL, **do not press YES.**
2. Mount all system devices at their permanent locations
3. Connect the supplied phone cord into the control panel phone jack.

**Note:** *The phone line can be run inside the wall and through the back of the control panel, or it can be run inside the wire cavity and out the end of the control panel.*

4. With the keypad display showing CLOSE THE PANEL, secure the cover onto the control panel. The display shows PANEL TAMPER ON OPEN = ALARM, then OPERATION COMPLETED?
5. Press YES. The display shows SYSTEM CHECK IN PROGRESS.

The system performs a test of all programmed devices. If all tampers are closed and battery conditions in all devices are good, the display shows INSTALLATION SUCCESSFUL, then changes to the date, time, and current status (DISARMED LVL:3). If there is no keypad activity for 40 seconds, the display goes out to conserve battery power.

### Changing Settings After Completing Initial Configuration/Programmin

Once the control panel cover is secured in place, removing it causes a tamper alarm. Changing settings made during the initial configuration or adding devices now requires setting the system to Access Level 4, using your installer code.

#### Setting the System to Level 4

1. With the display showing [DATE/ TIME], DISARMED LEVEL:3, press the right arrow button once. The display shows ACCESS LEVEL 3.
2. Press **YES**. The display now shows a colon (:) between LEVEL and 3 (LEVEL:3).
3. Press the right arrow button once to change the level number to 4, then press **YES**. The display shows BADGE OR CODE.
4. Enter your installer code, then press **YES**. The display shows ACCESS LEVEL 4.

You can now access the following menus:

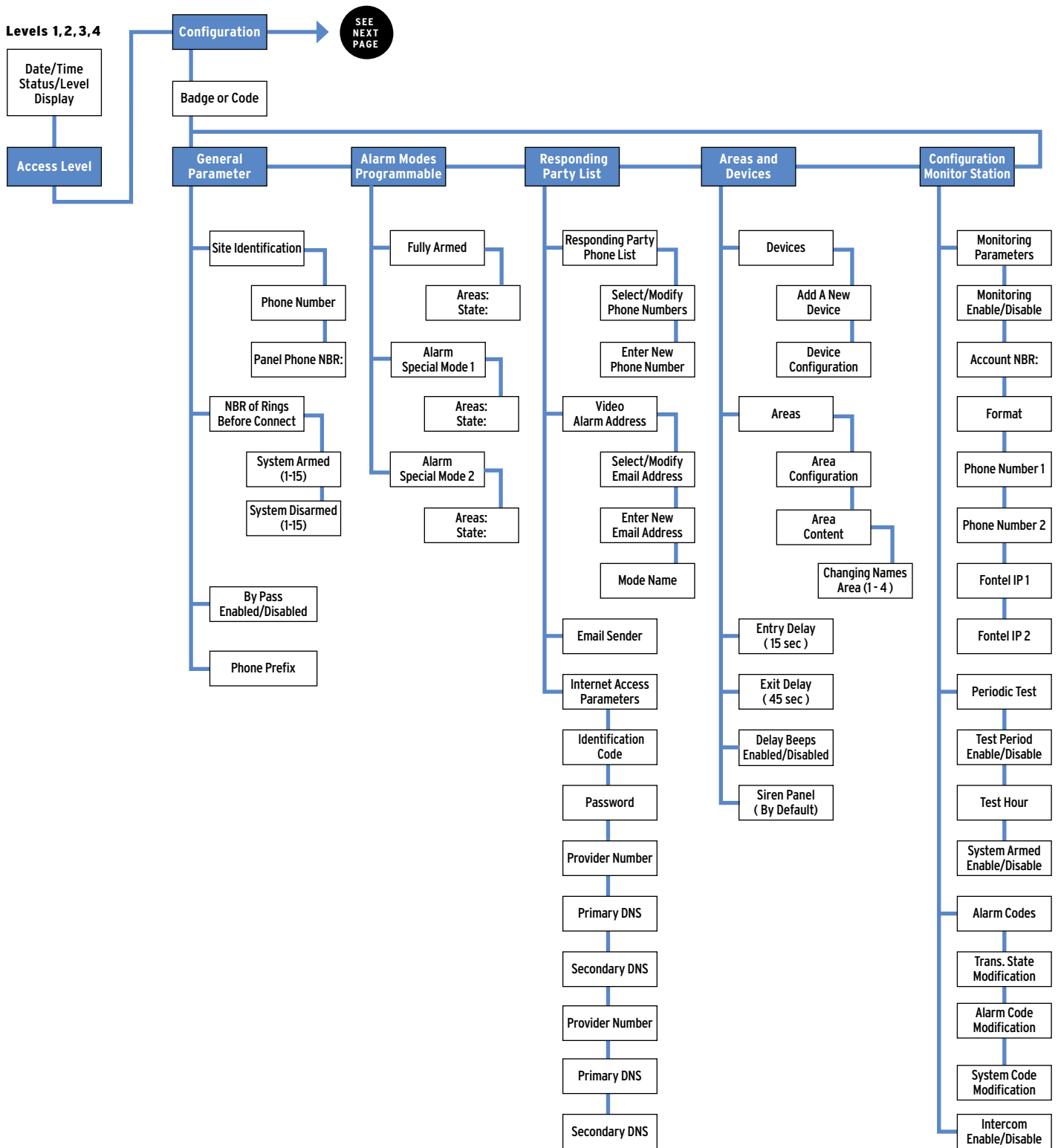
- > Configuration
- > Maintenance
- > Event Log
- > Badges-Access codes
- > Programmable Features

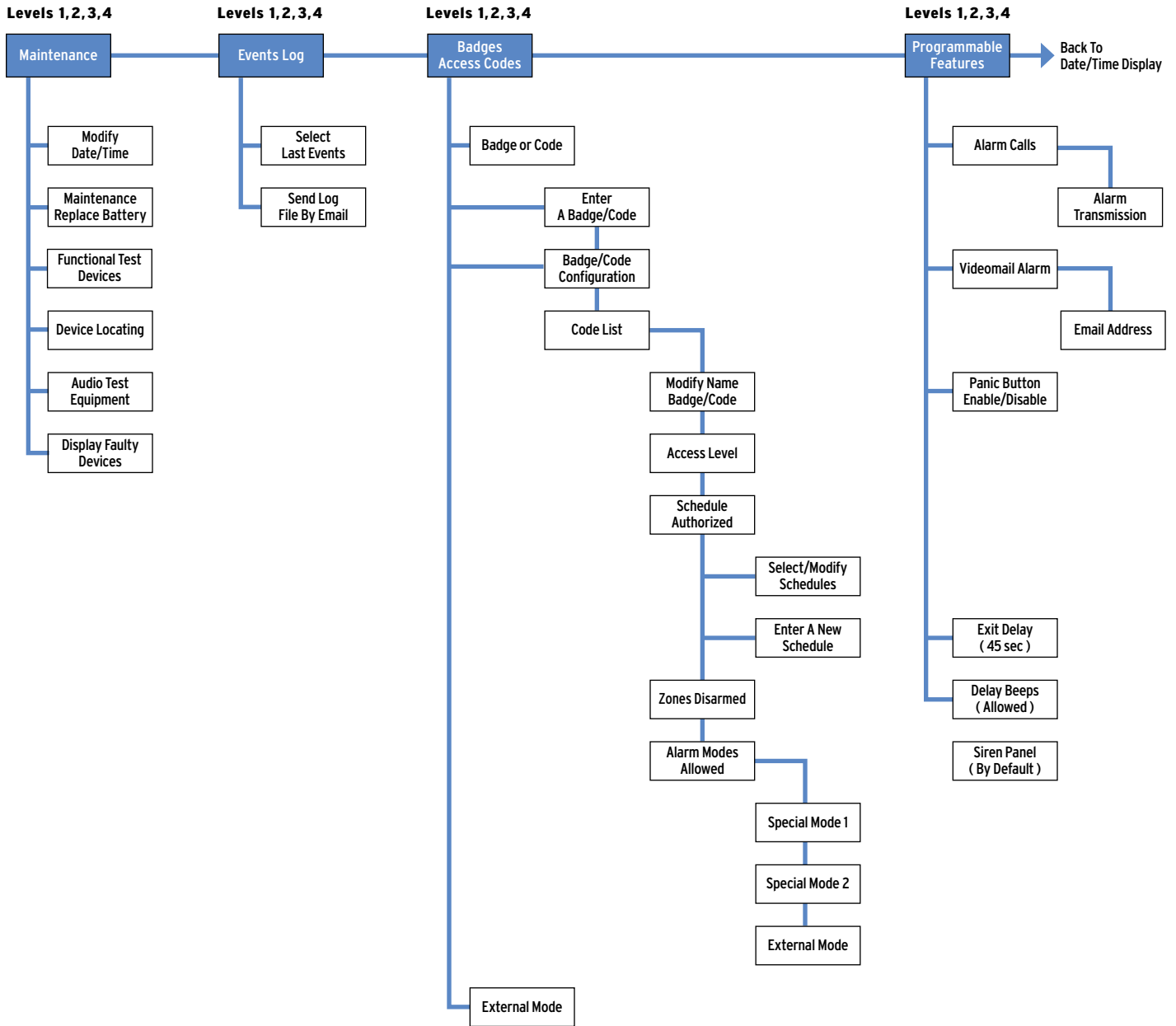
To make changes press the arrow keys to go to the desired menu and press YES. Only the Configuration & Badges-Access Codes menus require an access code to enter to view or change data. Review the system menus on the next few pages to see the programmable options.

### System Menus

The next two pages show the order in which menus now appear with the system in operational mode. There are six main menus available in the operating mode. The system level determines which menus are available, some with their own set of submenus.

The main menus and submenus are described afterward. To access these menus, press either arrow button until the desired main menu is displayed, then press YES to proceed.





**Access Level** – available in Levels 1, 2, 3, and 4  
 This menu shows the current system level and lets you change the level. Increasing the level always requires a valid access code assigned to that level. Lowering the level does not require an access code.

**Configuration** – available only in Level 4  
 This menu and the listed submenus below allow access to review and/or change system settings entered during the initial configuration/programming session.

- > **General Parameters**
  - Site Identification (phone number, name or address)
  - Number of Rings Before Connect system armed/disarmed
  - Bypass (enabled/disabled)
  - Phone Prefix
- > **Alarm (Arming) Modes Programmable**
  - Alarm
  - Alarm Special Mode 1
  - Alarm Special Mode 2
- > **Responding Party List**
  - Alarm Transmission (select/modify phone numbers, enter a new phone number)
  - Videomail Alarm Address (select/modify Email addresses, enter a new Email address)
- > **Email Sender**
- > **Internet Access Parameters**
  - Identity. Code
  - Password
  - Provider Number
  - Primary DNS
  - Secondary DNS
  - SMTP Server
  - Internet ID.
  - Internet Password
  - Responding Party Phone List (select/modify phone numbers, enter a new phone number)
- > **Areas and Devices**
  - Equipment (add a new device, device configuration) Areas
- > **Configuration Monitor. Station**
  - Monitoring Parameters (subscriber number, format, phone numbers, IP address's)
  - Periodic Test
  - Alarm Codes
  - Intercom (enabled/disabled)

**Maintenance** – available in Levels 2, 3, and 4  
 This menu allows access for system servicing.

- > **Modifying Date/Time**
- > **Maintenance Replace Battery**
- > **Functional Test Devices**
- > **Device Locating (identify/locate detectors)**
- > **Audio Test Equipment**
- > **Display Faulty Devices**

**Events Log** – available in Levels 2, 3, and 4  
 This menu lets you view and send via Email, a list of all system activity and events.

**Badges, Access Codes** – available in Levels 2, 3, and 4 (only with a valid Level 2, 3, or 4 access code) This menu and the submenus listed below let you add, modify, assign access levels to, and/or delete system access codes. Schedules can also be created and assigned to codes as needed.

- > **Recording A Badge/Code**
- > **Badges/Codes Configuration**
  - Modify Name Badge/Code
  - Access Level
  - Schedule Authorized Areas
  - Alarm (Arming) Modes
- > **Deleting Badges/Codes**

**Programmable Features** – available in Levels 2, 3, and 4 This menu allows access to the submenus below that let you view and/or change the system phone and IP numbers programmed during the initial configuration/programming mode. You can also enable or disable the panic button.

- > **Alarm Calls**
- > **Panic Button Enabled/Disabled**

**Programming Access Codes** – At this point in new installations, the only programmed access code is the installer code. This code, and any future programmed Level 4 codes are restricted from operating (arming/disarming) the system.

To make the system operational for the customer, access codes assigned to Levels 1, 2, or 3 must be programmed. Access codes can be 4 to 6 digits. The differences between access levels are described below.

- > **Level 1** – arm and disarm only.
- > **Level 2** – arm, disarm, Maintenance, Events Log, Badges Access Codes, and Programmable Features menus.
- > **Level 3** – same as Level 2.
- > **Level 4** – Configuration, Maintenance, Events Log, Badges Access Codes, and Programmable Features menus.

**Note:** *All new access codes are assigned to Level 3 by default. The procedure below includes access level assignment for a new code (steps 9 - 11). To change the access level assignment at a later time, refer to the next section "Changing Access Level Assignments".*

1. With the display showing the current date, time, and LVL:4, press the left arrow button twice. The display shows BADGES ACCESS CODES.
2. Press **YES**. The display shows BADGE OR CODE. Enter your installer code + **YES**. The display shows RECORDING A BADGE/CODE.
3. Press **YES**. The display shows BADGE OR CODE.
4. Enter the desired code + **YES**. The display shows CONFIRM THE CODE.
5. Re-enter the code + **YES**. The display shows CODE NAME:.
6. Enter the desired name + **YES**. The display shows [NAME] ENTRY COMPLETE, then returns to RECORDING A BADGE/CODE.
7. Press the right arrow button once. The display shows BADGES/CODES CONFIGURATION.
8. Press **YES**. The display shows MODIF NAME BADGE CODE.
9. Press the right arrow button once. The display shows ACCESS LEVEL 3.
10. Press **YES**. The display now shows a colon (:) between LEVEL and 3.
11. Press either arrow button until the desired level is displayed, then press **YES**. The display shows the new level assignment.
12. Press **ESC/NO** three times to return to BADGES ACCESS CODES.
13. Repeat steps 2 - 12 for remaining codes.

### Changing Access Level Assignments

You can change the access level assignments as needed any-time, using the following steps.

1. With the display showing the current date, time, and LVL: 4, press the left arrow button twice. The display shows BADGES ACCESS CODES.
2. Press **YES**. The display shows BADGE OR CODE. Enter your installer code + **YES**. The display shows ENTER A BADGE/CODE.
3. Press the right arrow button once. The display shows BADGES/CODES CONFIGURATION.
4. Press **YES**. The display shows the first programmed access code.
5. Press either arrow button until the desired code appears, then press **YES**. The display shows MODIF NAME BADGE/CODE.
6. Press the right arrow button once. The display shows ACCESS LEVEL 3.
7. Press **YES**. The display now shows a colon (:) between LEVEL and 3.
8. Press either arrow button until the desired level assignment appears, then press **YES**. The display shows the new level assignment.

9. Press **ESC/NO**.
10. Repeat steps 5 - 9 for other level assignment changes

### Changing Access Code Alarm Mode Restrictions

- After programming a new access code, altering alarm (arming) modes for any access code, using the following steps.

1. With the display showing date, time and LVL 4, press the left arrow button twice. The display shows BADGES ACCESS CODES.
2. Press **YES**. The display shows BADGE OR CODE. Enter a Level 2 or 3 access code + **YES**. The display shows ENTER A BADGE/CODE.
3. Press the right arrow button once. The display shows BADGES/CODES CONFIGURATION.
4. Press **YES**. The display shows the first programmed access code.
5. Press either arrow button until the desired code appears, then press **YES**. The display shows MODIFY NAME BADGE/CODE.
6. Press the left arrow button once. The display shows ALARM MODES ALLOWED.
7. Press **YES**. The display shows SPECIAL MODE 1 ALLOWED.
8. Press either arrow button until the desired mode appears, then press **YES**. The display shows a colon (:) next to ALLOWED.
9. Press either arrow button once. The display changes to DISABLED.
10. Press **YES**. The display shows the new alarm (arming) mode setting without the colon.
11. Repeat steps 5 - 10 for other code restriction changes.

**Deleting Access Codes** - Delete access codes as needed anytime, using the following steps.

1. With the display showing the current date, time, and LVL: 4, press the left arrow button twice. The display shows BADGES ACCESS CODES.
2. Press **YES**. The display shows BADGE OR CODE. Enter your installer code + **YES**. The display shows ENTER A BADGE/CODE.
3. Press the left arrow button once. The display shows DELETING BADGES/CODES.
4. Press **YES**. The display shows the first programmed access code.
5. Press either arrow button until the desired code appears, then press **YES**. The display shows DELETING CODE.
6. Press **YES** again. The display shows CODE DELETED.
7. Repeat steps 5 - 6 to continue deleting codes.

### Creating Schedules

Schedules determine when a specific access code can be used to arm and disarm the system. A schedule consists of a day, beginning time, and ending time that the specific access code can be used. Up to five schedules can be programmed for each access code.

Make copies of the table at right to fill in the necessary schedule information for each code. Enter this information using the procedure below.

1. With the display showing the current date, time, and LVL: 4, press the left arrow button twice. The display shows BADGES ACCESS CODES.
2. Press YES. The display shows BADGE OR CODE. Enter your installer code + **YES**. The display shows ENTER A BADGE/CODE.
3. Press the right arrow button once. The display shows BADGES/CODES CONFIGURATION.
4. Press **YES**. The display shows the first access code.
5. Press the left or right arrow button until the desired code is displayed, then press **YES**. The display shows MODIF NAME BADGE/CODE.
6. Press the right arrow button twice. The display shows SCHEDULE AUTHORIZED.
7. Press **YES**. The display shows SELECT/MODIFY SCHEDULES.
8. Press the right arrow button once. The display shows ENTER A NEW SCHEDULE.
9. Press **YES**. The display shows BEGIN SCHEDULE 1 Mon.
10. Press either arrow button until the desired weekday appears, then press **YES**. The display shows BEGIN SCHEDULE 1 Day= 00:00.
11. Press either arrow button until the desired hour appears, then press **YES**. The display does not change.
12. Press either arrow button until the desired minutes appear, then press **YES**. The display shows END SCHEDULE 1 Day.
13. Press **YES**. The display shows END SCHEDULE 1 Day= 00:00.
14. Press either arrow button until the desired hour appears, then press **YES**.
15. Press either arrow button until the desired minutes appear, then press **YES**. The display shows SCHEDULE ENTERED, then returns to ENTER A NEW SCHEDULE.

Code #	Sched. #	Day	Start Time	End Time
	1			
	2			
	3			
	4			
	5			
	1			
	2			
	3			
	4			
	5			
	1			
	2			
	3			
	4			
	5			
	1			
	2			
	3			
	4			
	5			
	1			
	2			
	3			
	4			
	5			
	1			
	2			
	3			
	4			
	5			
	1			
	2			
	3			
	4			
	5			

### Setting Up Special Arming Modes 1 and 2

These undefined special arming modes are used for Special Area arming of your system. You can set up which Areas of your premises are armed in mode 1 & 2 and if an alarm would be silent or audible. An office in the home could be armed/disarmed independently.

### Program Special Arming Modes 1 and 2

1. Set the system to CONFIGURATION using the installer code.
2. Press the right arrow until ALARM MODE PROGRAMMABLE is displayed.
3. Press **YES**. The display shows ALARM.
4. Press right arrow, display shows ALARM SPECIAL MODE 1.
5. Press **YES**. The active areas for that special Armand mode are displayed.  
 AREAS: 1234 are active in Special Arming Mode 1.  
 STATE: ABAA are the state of that Area when the special arming level 1 is used, Areas 1,3 and 4 are armed, Area 2 is disarmed. If Area 2 is your office, it is not armed when Areas 1, 3 and 4 are using Special Arming Mode 1.  
 There are four possible arming states you can select for each Area that is active in Special arming level 1 or 2, they are:

**A** = Area totally armed

**B** = Area totally disarmed

**C** = Only entry sensors are armed

**D** = Only entry sensors on perimeter openings are armed

Press the Area number 1-4 and select A-D for the Area, Press **Yes**, you will then be prompted for the special arming mode siren options: ALARM SIREN, SIGNAL DELAY BEEPS, ALARM SILENT, ALARM WITHOUT SIREN Press the right arrow button until the display shows the siren mode you want, press **Yes**. The display now shows: DESIGNATION MODE SPECIAL MODE 1 you can hit ESC/NO and back out of configuration or rename special arming mode 1 to a new name of your choice. To do this: Press **Yes**, the display shows OPERATING MODE\_now input your new name and press the **Yes** key.

When finished, press and hold the ESC/NO key until you get back to the Date and time idle text.

Put the alarm panel back into level 2 or 3 when all configuration/programming is complete.

### Viewing the History/Event Log

Events are any system activity such as arming, disarming, alarms, access codes entered, and system programming changes. The control panel uses built-in memory to record each system event. This log cannot be cleared or erased and accumulates events for up to a full year. As additional events occur, the control panel automatically deletes the oldest event. This ensures an accurate history.

You can view the contents of the history/event log using a system Keypad or by instructing the system to send the complete event log as an Email.

### Viewing by Keypad

This method lets you view the most recent events.

1. Set the system to Level 2 or 3.
2. Press either arrow button until the display shows EVENT LOG.
3. Press Yes. The display shows SELECT LAST EVENTS.
4. Press Yes. The last or most recent event is displayed.
5. Press the left arrow button to view previous events.
6. When finished, simply stop pressing buttons. The display returns to the date/time and current status, then goes blank to conserve battery power.

### Sending History/Log File by Email

This method lets you send a complete history/log file to a desired Email address for viewing. The Email includes an attachment (in ASCII file format) that can be opened using a word/text processor such as Microsoft® Word® or Notepad®

1. Set the system to Level 2 or 3.
2. Press either arrow button until the display shows EVENT LOG.
3. Press Yes. The display shows SELECT LAST EVENTS.
4. Press the right arrow button once. The display shows SEND LOG FILE BY EMAIL.
5. Press Yes. The display prompts you to identify the Email address.
6. Enter the desired Email address using the alphanumeric Keypad buttons, then press Yes. The display shows DELIVER?
7. Press Yes. The display indicates when delivery is completed.

**Note:** *If the display message indicates the Email was undeliverable, check the Email address to make sure it is valid/correct and try again.*



# Specifications

## Electrical Data

Power requirements:	Four 3.6 V batteries
Battery type:	Lithium, LSH20
Battery life (estimated):	At least 4 years
RF technology:	S2VIEW®
Radio type:	Bidirectional
Operating frequency:	915 MHz 25 channel spread spectrum
Frequency allocation:	Automatic by control panel
Transmission speed:	9600 bps
Transmission security:	AES algorithm encryption
Radio jam detection:	Yes
Supervision:	Every 8 minutes
Antenna:	Integrated
Tamper detection:	Cover removal or removal from mounting surface
Siren output:	110 dba @ 1 meter
Siren duration:	3 minutes maximum
Programming:	Alphanumeric Keypads or Frontel Automation Software
Devices per system:	24 maximum
Access codes:	20 maximum
Installer codes:	One (for system programming only)
Security levels:	4
Arming modes:	4
Area:	1 (Area 1 predefined from factory for entry/exit delay. Areas 2, 3, & 4 programmable)
Communicator transmitter:	Embedded; digital, voice, IP Communicator type: Analog phone line PTSN (TBR21)
Dialing:	DTMF
Protocols:	Frontel, CID
IP stack:	IP, TCP/IP, HTTP, SMTP, PPP
Voice alarm transmission:	Up to 3 phone numbers
Voice server:	Pre-recorded messages
Email transmission:	Up to 2 Email addresses
Remote maintenance:	Frontel protocol only
Video transmission:	By Frontel protocol to central monitoring station, or by Email
Video format:	MPEG V1.0 video file, 5 frames/second
Video file size:	200 Kbytes
Video framing:	5 frames/second
Picture format:	JPEG
Picture size:	320 x 240 pixels
History/Event Log:	4,000 events stored in flash memory
Operating temperature:	32° - 104° F (0° - 40° C)
Maximum relative humidity:	70%, non-condensing
UL Listings:	1023 (applied for)

## Physical Data

Material:	ABS-ULVO
Dimensions:	(LxWxD): 11 in. x 6-1/4 in. x 2-1/4 in. (280 mm x 158 mm x 57 mm)
Weight:	34.5 oz./980 g (without batteries)
History/Event Log:	4,000 events stored in flash memory
Operating temperature:	32° - 104° F (0° - 40° C)
Maximum relative humidity:	70%, non-condensing
UL Listings:	1023 (applied for)