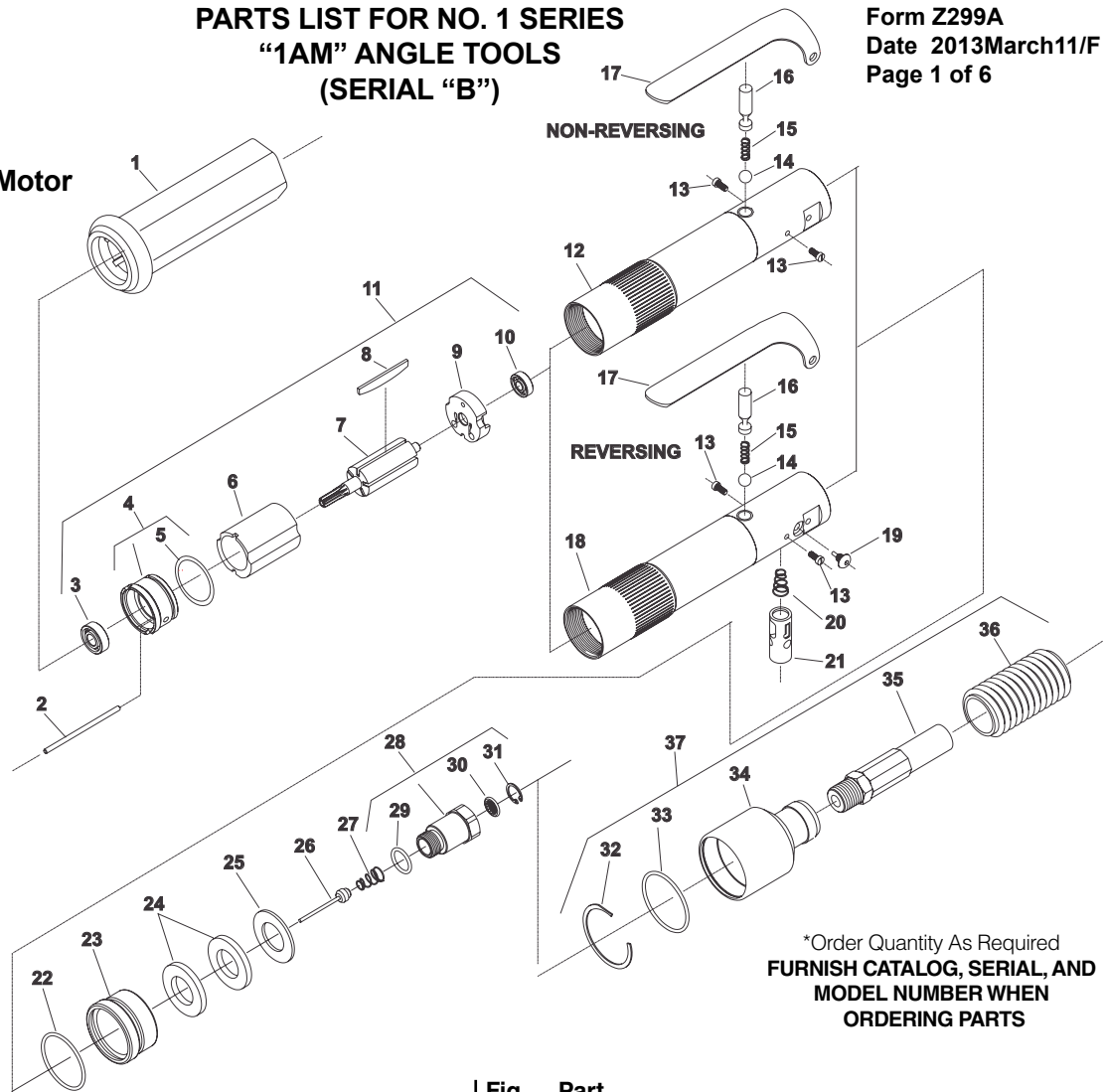




**PARTS LIST FOR NO. 1 SERIES  
"1AM" ANGLE TOOLS  
(SERIAL "B")**

Form Z299A  
Date 2013March11/F  
Page 1 of 6

Housing And Motor



\*Order Quantity As Required  
**FURNISH CATALOG, SERIAL, AND  
MODEL NUMBER WHEN  
ORDERING PARTS**

Fig. No.	Part No.	Description
1.	66124	Housing Sleeve (Long)(800, 1100, 1500 RPM)
	66193	Housing Sleeve (Short)(2200, 2800, 3400, 4300 RPM)
2.	66132	Pin
3.	65998	Ball Bearing
4.	65995	Lower End Plate
5.	14391	O-Ring
6.	65994	Cylinder (800, 1100, 1500, 2200, 2800, 3400 RPM)
	66005	Cylinder (4300 RPM)
7.	65991	Rotor (6 Tooth)(2200 RPM)
	65992	Rotor (8 Tooth)(800, 1100, 1500, 2800 RPM)
	66084	Rotor (10 Tooth)(3400, 4300 RPM)
8.	SP66190	Vane (Set of 5)
9.	65997	Upper End Plate (800, 1100, 1500, 2200, 2800, 3400 RPM)
	66004	Upper End Plate (4300 RPM)
10.	10255	Ball Bearing
11.	65999	Motor (6 Tooth)(2200 RPM)
	66000	Motor (8 Tooth)(800, 1100, 1500, 2800 RPM)
	66146	Motor (10 Tooth)(3400 RPM)
	66085	Motor (10 Tooth)(4300 RPM)
12.	66220	Housing Assembly (Non-Reversing)(800, 1100, 1500 RPM)
	66219	Housing Assembly (Non-Reversing) (2200, 2800, 3400, 4300 RPM)
13.	06099	Screw (2)*
14.	10299	Steel Ball, 1/4" Dia

Fig. No.	Part No.	Description
15.	21211	Spring
16.	66020	Plunger
17.	35235	Non-Locking Lever (For 1AM... Models)
	65669TM	Locking Lever (For 1AML... Models)
18.	66222	Housing Assembly (Reversing) (800, 1100, 1500 RPM)(Includes Figure 18)
	66221	Housing Assembly (Reversing) (2200, 2800, 3400, 4300 RPM) (Includes Figure 18)
19.	66032	Retaining Screw
20.	21441	Spring
21.	66021	Valve
22.	04210	O-Ring
23.	66018	Silencer Housing
24.	66191	Felt Washer (2)*
25.	66017	Diffuser Screen
26.	66035	Valve Assembly
27.	21441	Spring
28.	66016	Inlet Adapter
29.	14312	O-Ring
30.	30463	Screen
31.	21541	Retaining Ring
32.	66034	Retaining Ring
33.	14371	O-Ring
34.	66033	Exhaust Adapter
35.	1359	Air Hose
36.	65723	Exhaust Hose
37.	3302	Remote Exhaust Kit

Remote Exhaust



Snap-on Power Tools, Inc.

**PARTS LIST FOR NO. 1 SERIES "1AM" ANGLE TOOLS  
(SERIAL "B")**

**Double Reduction  
(800, 1100, 1500 RPM)**

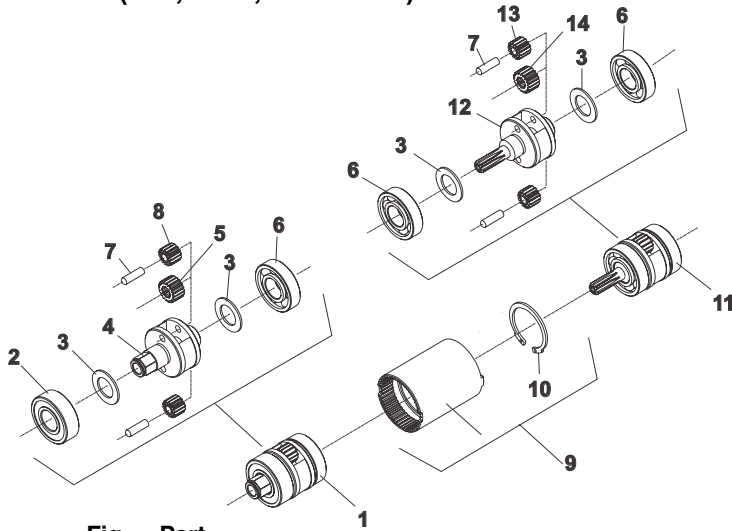


Fig. No.	Part No.	Description
1.	43298	Planetary Assembly (800 RPM)
	43301	Planetary Assembly (1100 RPM)
	66089	Planetary Assembly (1500 RPM)
2.	10246	Ball Bearing
3.	25680	Washer (4)*
4.	44455	Gear Carrier (800 RPM)
	44456	Gear Carrier (1100 RPM)
	66081	Gear Carrier (1500 RPM)
5.	66077	Pinion Gear (1500 RPM)
6.	10241	Ball Bearing (3)*
7.	30453	Pin (4)*
8.	19195	Idler Gear (800 RPM)(2)*
	19191	Idler Gear (1100 RPM)(2)*
	66078	Idler Gear (1500 RPM)(2)*
9.	19190	Ring Gear
10.	21537	Retaining Ring
11.	66087	1st Planetary Assembly (800, 1500 RPM)
	66088	1st Planetary Assembly (1100 RPM)
12.	66079	Gear Carrier (800, 1500 RPM)
	66080	Gear Carrier (1100 RPM)
13.	66078	Idler Gear (800, 1100 1500 RPM)(2)*
14.	66077	Pinion Gear (800, 1100 1500 RPM)

**Single Reduction  
(2200, 2800, 3400, 4300 RPM)**

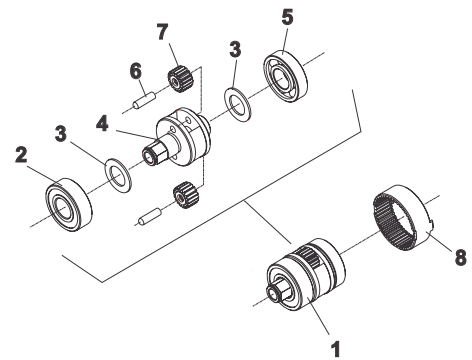


Fig. No.	Part No.	Description
1.	43713	Planetary Assembly (2200 RPM)
	43298	Planetary Assembly (2800 RPM)
	66090	Planetary Assembly (3400, 4300 RPM)
2.	10246	Ball Bearing
3.	25680	Washer (2)*
4.	44878	Gear Carrier (2200 RPM)
	44455	Gear Carrier (2800 RPM)
	66083	Gear Carrier (3400, 4300 RPM)
5.	10241	Ball Bearing
6.	30453	Pin (2)*
7.	19212	Idler Gear (2200 RPM)(2)*
	19195	Idler Gear (2800 RPM)(2)*
	66082	Idler Gear (3400, 4300 RPM)(2)*
8.	19189	Ring Gear

\*Order Quantity As Required  
**FURNISH CATALOG, SERIAL, AND  
MODEL NUMBER WHEN  
ORDERING PARTS**

**PARTS LIST FOR NO. 1 SERIES "1AM" AIRCRAFT ANGLE TOOLS  
(SERIAL "B")**

**Single Reduction  
(2200, 2800 RPM)**

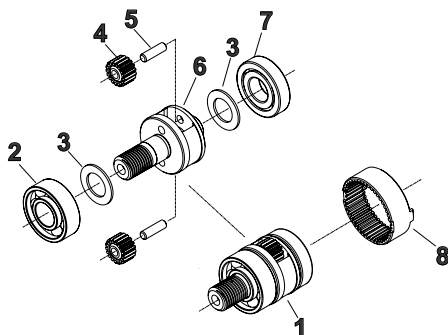
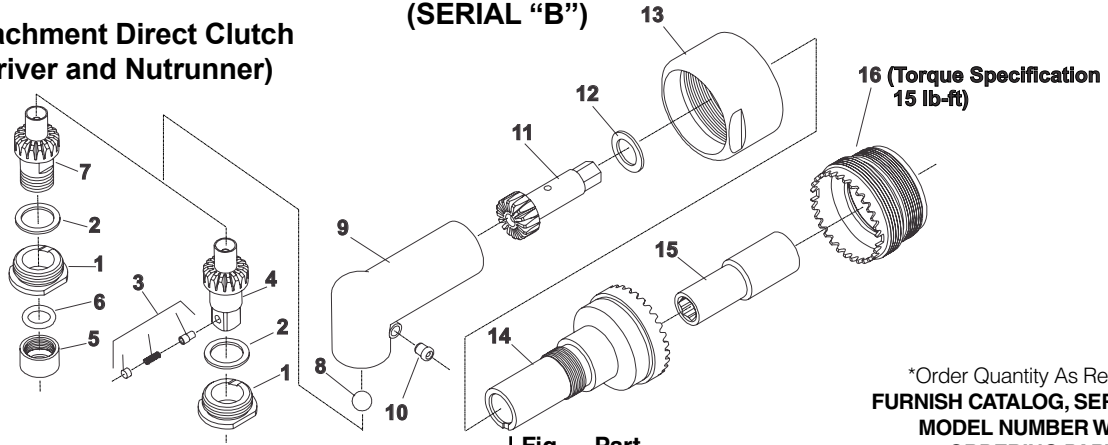


Fig. No.	Part No.	Description
1.	43803	Planetary Assembly (2200 RPM)
	43804	Planetary Assembly (2800 RPM)
2.	10257	Ball Bearing
3.	25680	Washer (2)*
4.	30453A	Pin (2)*
5.	19212	Idler Gear (2200RPM)
	19195	Idler Gear (2800RPM)
6.	44920	Gear Carrier (2200 RPM)
	44921	Gear Carrier (2800 RPM)
7.	10241	Ball Bearing
8.	19189	Ring Gear

**PARTS LIST FOR NO. 1 SERIES "1AM" ANGLE TOOLS  
(SERIAL "B")**

**Angle Attachment Direct Clutch  
(Screwdriver and Nutrunner)**



\*Order Quantity As Required  
**FURNISH CATALOG, SERIAL, AND  
MODEL NUMBER WHEN  
ORDERING PARTS**

Fig. No.	Part No.	Description	
1.	44981	Retainer	
2.	35258	Output Gear Spacer	
3.	53347	Socket Retainer Assembly	Nutrunner
4.	53457	Spindle Assembly 1/4" Square (Includes Figure 3)	
5.	44977	Nut	Screwdriver
6.	14291	O-Ring	
7.	19328	Bit Holder Assembly, 1/4" Hex Female	
8.	10291	Ball, 7/32" Dia	
9.	11567	Angle Head	
10.	30375	Grease Fitting	

Fig. No.	Part No.	Description
11.	19469	Pinion
12.	35259	Input Gear Spacer
13.	44980	Locknut
14.	66139	Angle Head Adapter
15.	66147	Connector
16.	66169	Retainer
		66144 Angle Head Assembly (1/4" Hex Female Screwdriver) (Includes Figures 1, 2, 5 thru 14)
		66145 Angle Head Assembly (1/4" Hex Square Nutrunner) (Includes Figures 1 thru 4, 8 thru 14)

**Angle Attachment Adjustable Clutch  
(Screwdriver and Nutrunner)**

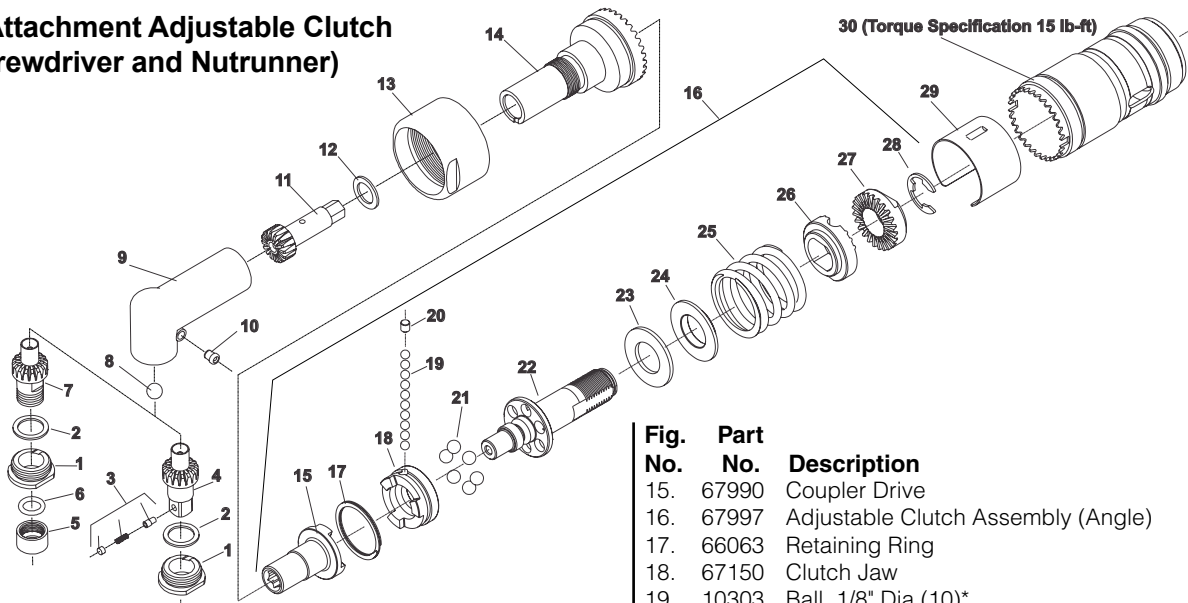


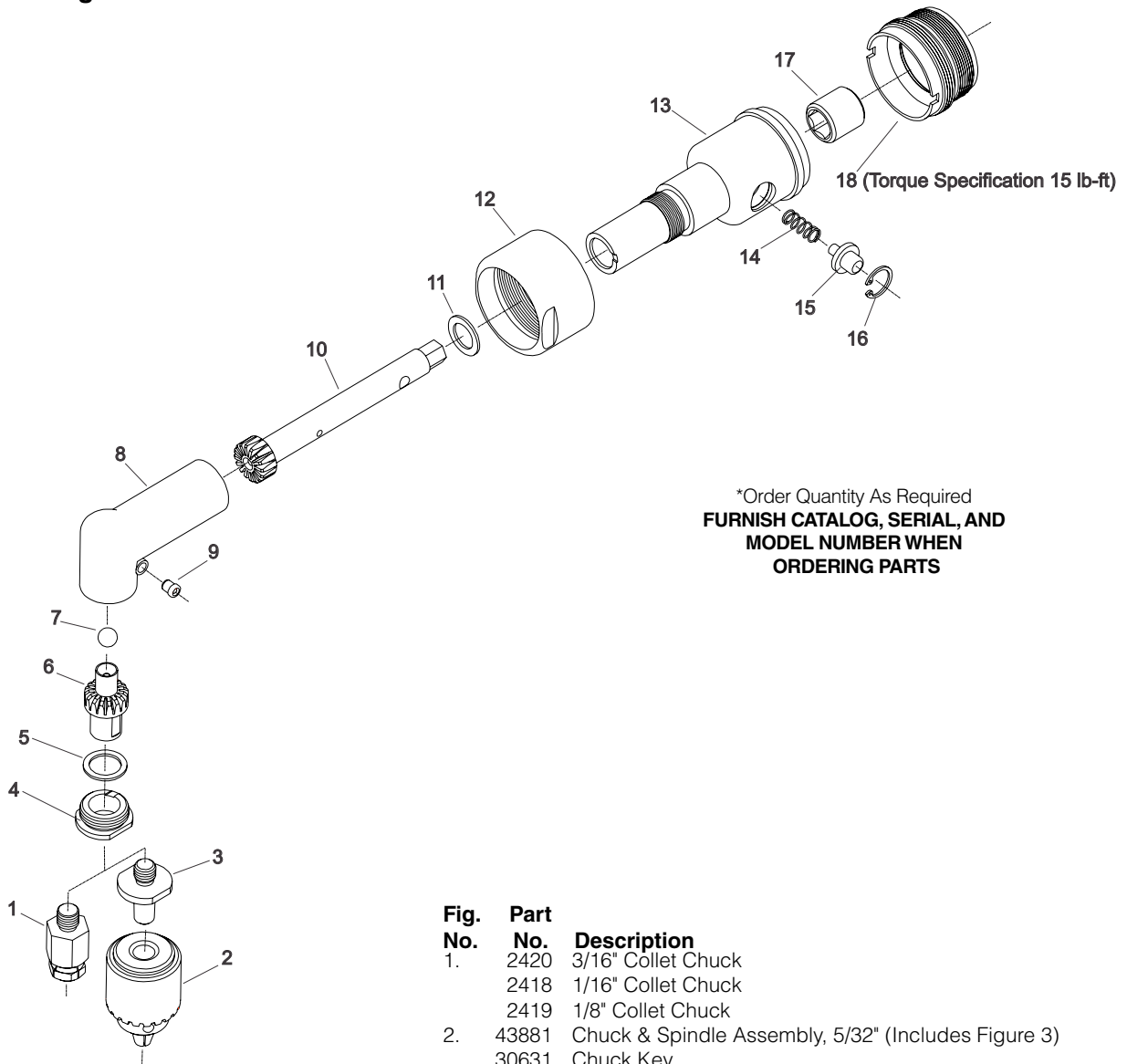
Fig. No.	Part No.	Description	
1.	44981	Retainer	
2.	35258	Output Gear Spacer	
3.	53347	Socket Retainer Assembly	Nutrunner
4.	53457	Spindle Assembly 1/4" Square (Includes Fig. 3)	
5.	44977	Nut	Screwdriver
6.	14291	O-Ring	
7.	19328	Bit Holder Assembly 1/4" Hex Female	
8.	10291	Ball, 7/32" Dia	
9.	11567	Angle Head	
10.	30375	Grease Fitting	
11.	19469	Pinion	
12.	35259	Input Gear Spacer	
13.	44980	Locknut	
14.	66139	Angle Head Adapter	

Fig. No.	Part No.	Description
15.	67990	Coupler Drive
16.	67997	Adjustable Clutch Assembly (Angle)
17.	66063	Retaining Ring
18.	67150	Clutch Jaw
19.	10303	Ball, 1/8" Dia (10)*
20.	66055	Plug
21.	10306	Ball, 3/16" Dia (6)*
22.	67149	Clutch Spindle
23.	68014	Thrust Race
24.	66053	Thrust Washer
25.	66048	Spring (Silver)(800, 1100 RPM)(30-50 in-lb)
	66049	Spring (Blue)(1500 RPM)(15-35 in-lb)
	66050	Spring (Green)(2800 RPM)(2-20 in-lb)
26.	66047	Adjustment Washer
27.	66046	Adjustment Nut
28.	21493	Retaining Ring
29.	66058	Cover
30.	66138	Retainer (Adjustable Clutch)

Items Not Shown:  
2366 Clutch Adjustment Wrench

**PARTS LIST FOR NO. 1 SERIES  
"1AM" ANGLE TOOLS  
(SERIAL "B")**

**Angle Attachment Drill**

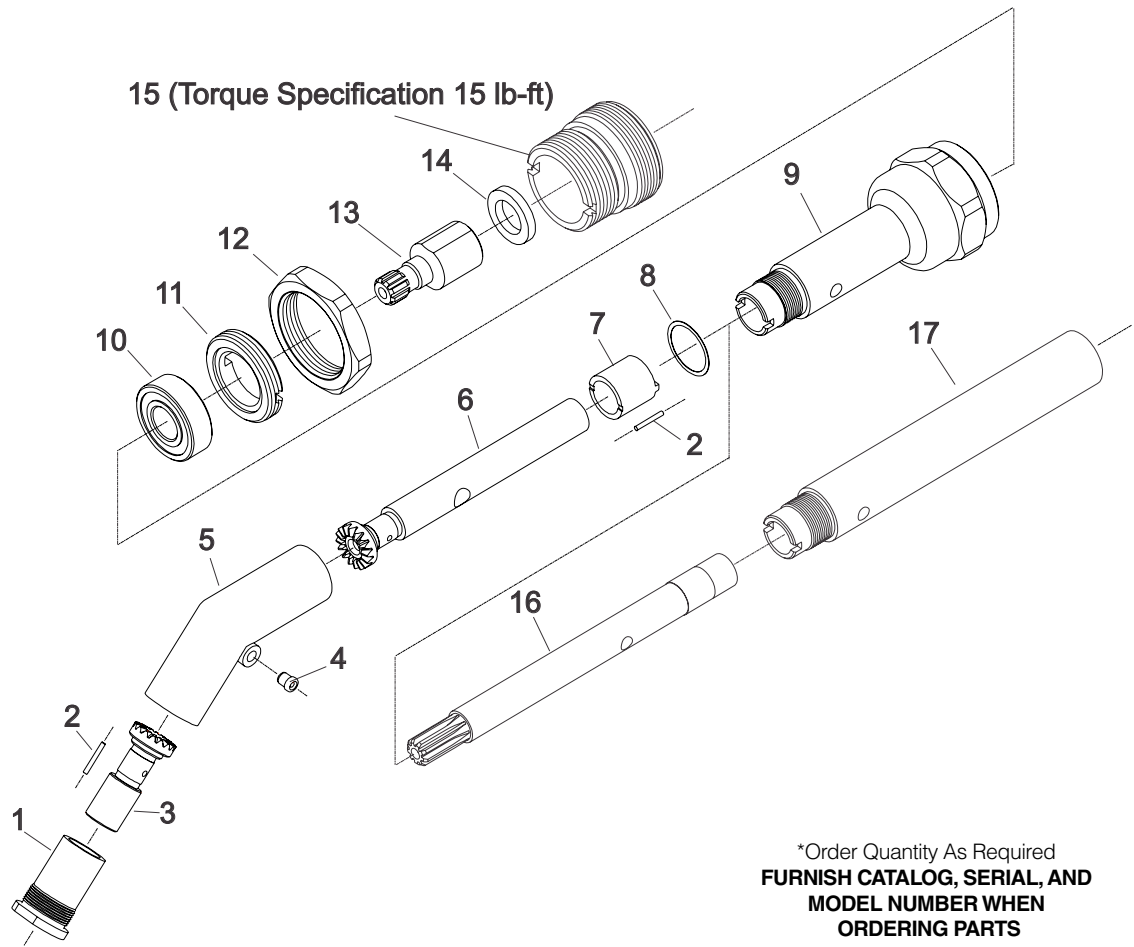


\*Order Quantity As Required  
**FURNISH CATALOG, SERIAL, AND  
MODEL NUMBER WHEN  
ORDERING PARTS**

<b>Fig. No.</b>	<b>Part No.</b>	<b>Description</b>
1.	2420	3/16" Collet Chuck
	2418	1/16" Collet Chuck
	2419	1/8" Collet Chuck
2.	43881	Chuck & Spindle Assembly, 5/32" (Includes Figure 3)
	30631	Chuck Key
3.	44840	Chuck Spindle
4.	44981	Retainer
5.	35258	Output Gear Spacer
6.	19329	Spindle Assembly, 1/4"-28 Female Thread
7.	10291	Ball, 7/32" Dia
8.	11567	Angle Head
9.	30375	Grease Fitting
10.	19468	Pinion
11.	35259	Input Gear Spacer
12.	44980	Locknut
13.	53035	Angle Attachment Sleeve Assembly (Includes Figures 14 thru 16)
14.	21211	Spring
15.	54145	Spindle Lock
16.	21765	Retaining Ring
17.	44996	Connector
18.	44982	Retainer
	53000	Complete Drill Angle Assembly (Includes Figures 4 thru 18)

**PARTS LIST FOR NO. 1 SERIES  
"1AM" ANGLE TOOLS  
(SERIAL "B")**

**45 Degree Angle Head Assembly**



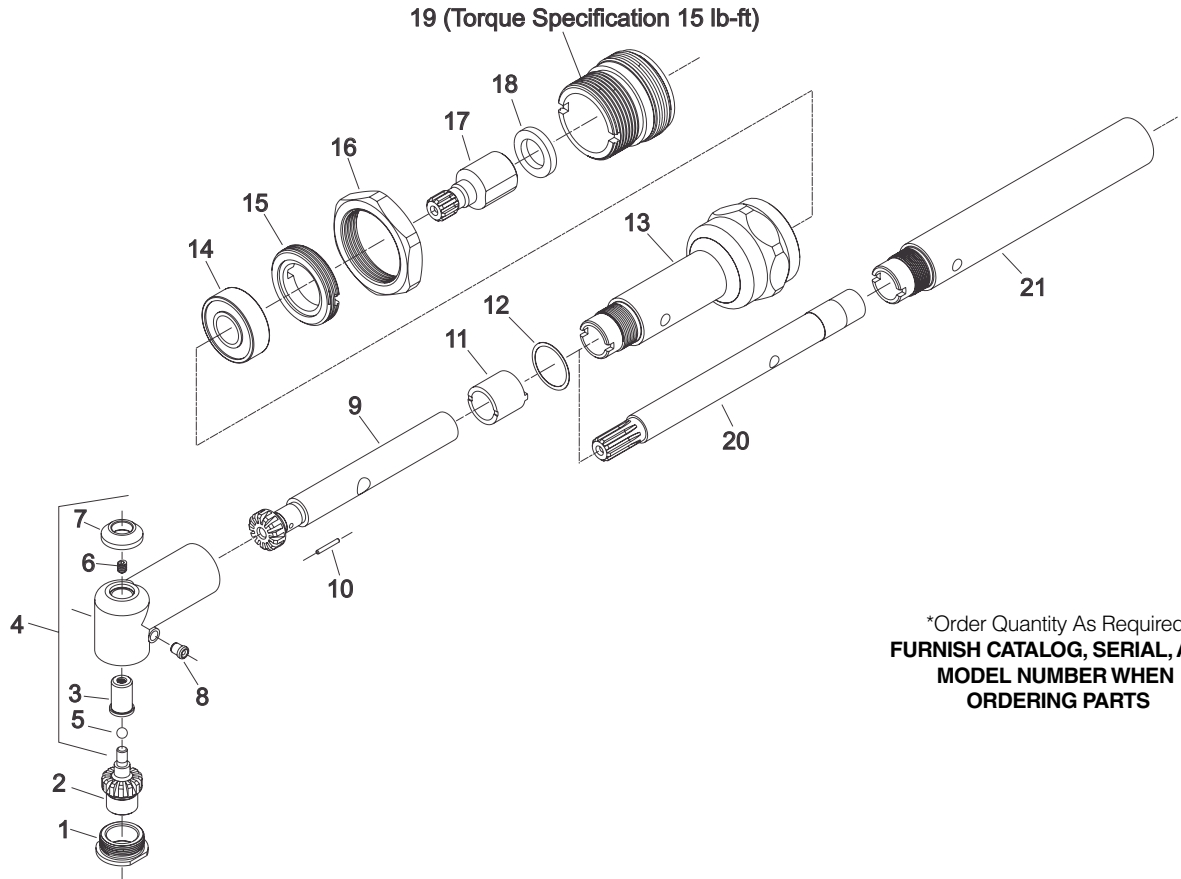
\*Order Quantity As Required  
**FURNISH CATALOG, SERIAL, AND  
MODEL NUMBER WHEN  
ORDERING PARTS**

<b>Fig. No.</b>	<b>Part No.</b>	<b>Description</b>
1.	65238	Flange Bushing
2.	65246	Pin (Set of 22)(2)*
3.	65236	Collet Gear (1/4-28 Th'd)
	65264	Collet Gear (#10-32 Th'd)
	65538	Collet Gear (9/32"-40 Th'd)
4.	30375	Grease Fitting
5.	65237	45 Degree Housing (Includes Figure 4)
6.	65235	Pinion
7.	65245	Bearing Retainer
8.	65242	Shim, .005" (Order Quantity As Needed)
9.	65244	Angle Drill Housing
10.	10257	Ball Bearing
11.	65243	Retaining Nut
12.	65143	Jam Nut
13.	65146	Spindle Adapter
14.	44122	Spacer
15.	65231	Adapter
16.	65486	Drive Shaft Extension
17.	65487	Housing Extension
	65213	Complete Assembly (1/4"-28 Th'd)(Includes Figures 1 thru 11)
	65265	Complete Assembly (#10-32 Th'd)(Includes Figures 1 thru 11)
	65541	Complete Assembly (9/32"-40 Th'd)(Includes Figures 1 thru 11)



**PARTS LIST FOR NO. 1 SERIES  
"1AM" ANGLE TOOLS  
(SERIAL "B")**

**90 Degree Angle Head Assembly**



\*Order Quantity As Required  
**FURNISH CATALOG, SERIAL, AND  
MODEL NUMBER WHEN  
ORDERING PARTS**

Fig. No.	Part No.	Description
1.	65248	Bearing Bushing
2.	67495A	Set Gear (1/4"-28 Th'd)
		(Includes Figures 3, 5, 6, 7, 9)
	67496A	Set Gear (#10-32 Th'd)
		(Includes Figures 3, 5, 6, 7, 9)
	67497A	Set Gear (9/32"-40 Th'd)
		(Includes Figures 3, 5, 6, 7, 9)
3.	67852	Bushing (Includes Figures 5, 6)
4.	65247A	90° Housing
5.	10303	Steel Ball, Ø1/8"
6.	06012	Set Screw, #4-40 x 1/8" Socket Hex
7.	67853	Cap
8.	30375	Grease Fitting
9.		90° Pinion (Not Available Individually, Refer to Figure 2)
10.	65246	Pin (Set of 22)
11.	65245	Bearing Retainer
12.	65242	Shim, .005" (Order Quantity As Needed)

Fig. No.	Part No.	Description
13.	65244	Angle Drill Housing
14.	10257	Ball Bearing
15.	65243	Retaining Nut
16.	65143	Jam Nut
17.	65146	Spindle Adapter
18.	44122	Spacer
19.	65231	Adapter
20.	65486	Drive Shaft Extension
21.	65487	Housing Extension
	65214A	Complete Assembly (1/4-28 Th'd) (Includes Figures 1 thru 15)
	65266A	Complete Assembly (#10-32 Th'd) (Includes Figures 1 thru 15)
	65542A	Complete Assembly (9/32"-40 Th'd) (Includes Figures 1 thru 15)



Snap-on Power Tools, Inc.

This pdf incorporates the following model numbers:

1AM1141, 1AM1151, 1AM1441, 1AM1451, 1AM1452, 1AM1541, 1AM1542, 1AM1550, 1AM1551,  
1AM1552, 1AM1611, 1AM2101, 1AM2102, 1AM2105, 1AM2106, 1AM2201, 1AM2205, 1AML1451,  
1AML1541, 1AML1551