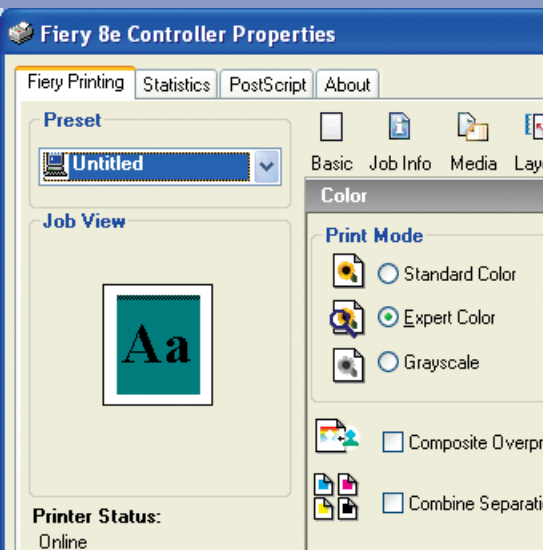


Ricoh Aficio MP C2500/C3000/C3500/C4500 EFI Series  
Fiery-Driven Color Multifunctional Systems  
Maximize productivity and color control

**RICOH**



versatile



color



control

## Manage color while improving quality and productivity

Maximize the performance and productivity of your RICOH® Color Multifunctional System with the latest EFI Fiery print controller technology. Designed to handle the workflow of even color-intensive, multi-user environments, the Ricoh Aficio® MP C2500/C3000/C3500/C4500 EFI Series allows you to manage sophisticated color projects quickly and easily.

### Take control, expand versatility

Whatever your business, you're often faced with constantly changing priorities and last-minute jobs.

- Take control of your workflow and optimize the productivity of your printer with the Fiery Command WorkStation (CWS) utility. This virtual "window into the system" provides a real-time status report on all jobs in the Fiery.
- Extend versatility with the optional Impose application, a powerful in-RIP imposition tool that allows you to make last-minute document revisions without having to go back to the native application.

### Consistent, accurate color

Ensure consistent, accurate color and print virtually any color file exactly as it should be with ColorWise, Fiery's powerful color management system.

- No matter what your level of expertise, ColorWise allows you to calibrate color quickly and easily: novices are provided with a simple, 3-step process, while color experts can take advantage of a range of sophisticated tools.
- For additional color control, the Spot-On option lets you easily match specific colors, while optional Auto Trapping simplifies the challenge of printing text on colored backgrounds.

### Streamline document production

Save time and eliminate errors with advanced Fiery capabilities that boost productivity and efficiency:

- Make programming jobs a snap with the new, icon-driven interface on the Fiery Driver V3.0.
- Simplify printing of complex documents with Fiery Driver templates that allow one-click printing. Or simply drag and drop files into a Hot Folder (optional), which automatically prints files using predefined output parameters.
- Accelerate throughput by downloading PDF, PostScript, EPS, TIFF and font files directly to the Fiery, without requiring the original application or spooling on the client desktop.
- Print files directly from removable media—with no need for a computer—with USB Media Print.

### Easy installation, strong security

Fiery's Netwise makes it simple to connect the MP C2500/C3000/C3500/C4500 EFI Series to virtually any network, operating system or computer—Mac or PC. In addition, a wide range of tools ensures data security, prevents unauthorized access, and helps you keep color usage under control and manage printing costs.

With powerful tools to manage file processing and color accuracy, the Ricoh Aficio MP C2500/C3000/C3500/C4500 EFI Series is a versatile solution for all your color output needs.



## Specifications

### General Features

Print speed (B&W/Color)	C2500 EFI: 25-ppm/25-ppm color, C3000 EFI: 30-ppm/30-ppm C3500 EFI: 35-ppm/35-ppm, C4500 EFI: 45-ppm/40-ppm
Type	External Print Controller
CPU	Intel Celeron 2GHz
RAM	256MB (Std./Max.)
Hard Disk Drive	80GB
Operating System	Linux

### Printing Features

Resolution	600 dpi
PDLs	Adobe® PostScript® 3™, PCL 5c, PCL 6
Fonts	PostScript: 139 Fonts (127 Adobe Type 1, 10 TrueType, 2 Multiple Masterbase) PCL: 81 Fonts (10 TrueType, 35 Intelli, 1 Bitmapped, 35 Type 1)
Capabilities	RIP-While-Print, Continuous Print, Electronic Collation, Calibration, Mixed Media, Previews, RGB Separations, Combine Separations, Composite Overprint, Black Overprint, Secure Erase, User Authentication, Variable Data Printing

### Scanning Features

Resolution	600 dpi
File Formats	JPEG, TIFF, PDF
Image Adjustment	Brightness, Drop-Out Color, Page Size, Orientation, Compression
Mixed Originals	Yes
Scan-to	E-Mail (with LDAP), SMB Folder, FTP, Mailbox, Internet Fax, Fiery Hold Queue
TWAIN scanning	Yes

### Networking

Interfaces	10BaseT/100BaseTX/1000BaseT with RJ-45, USB 2.0 (For USB Media Print)
Protocol	TCP/IP, IPX/SPX, AppleTalk (Auto Switching), SMB
Color Management Tools	ICC Profile, Color Chart, CMYK Color Reference Pages, RGB Color Tests, Trapping Support, ColorWise Pro Tools
Utilities	Command WorkStation Windows Edition V4.5 Command WorkStation Macintosh Edition V1.2 ColorWise Pro Tools Fiery Scan (Twain plug-in, Remote Scan) Fiery Printer Delete Utility Fiery Mail Port Fiery Web Tools
Options	EFI Impose Color Profiler Auto Trapping Spot-On Hot Folders Atlas PrintShopMail (Fiery version) for PC & MAC

For maximum performance, we recommend using genuine Ricoh parts and supplies. Specifications subject to change without notice.

**RICOH**  
www.ricoh-usa.com



Ricoh Corporation, Five Dedrick Place, West Caldwell, NJ 07065  
RICOH and the Ricoh Logo are registered trademarks of Ricoh Company, Ltd. Windows® and Windows® 98/Me/NT4.0/2000/XP are registered trademarks of Microsoft Corporation. Macintosh®, Mac® OS and AppleTalk® are registered trademarks of Apple Computer, Inc. Adobe® and PostScript® are registered trademarks of Adobe Systems, Inc. PCL® is a registered trademark of Hewlett-Packard Company. RPS™ is a trademark of Ricoh Company, Ltd. All other trademarks are the property of their respective owners. Specifications and external appearances are subject to change without notice.