

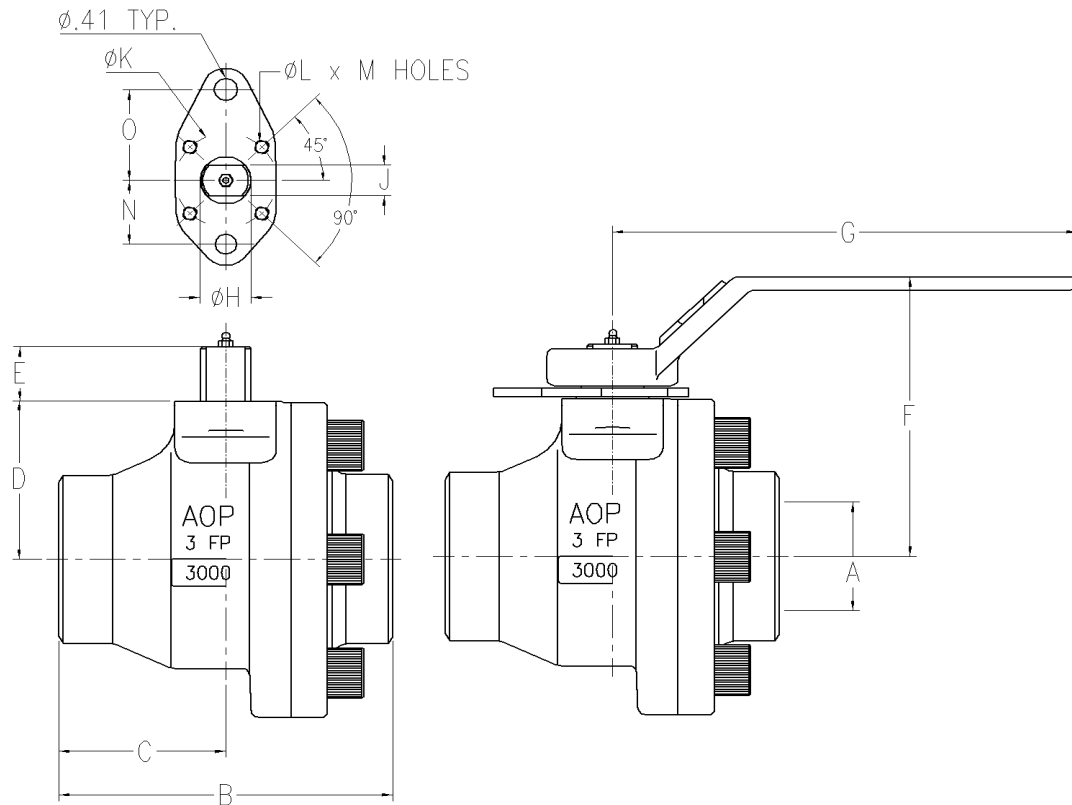
| DIMENSION | SIZE | 1.5 x 1.5 | 1.5 x 1.5 | 2 x 1.5 | 2 X 2 | 2 X 2 | 2.5 x 2 | 3 x 2 | 3 x 3 | 3 x 3 | 4 x 3 |
|---------------------------|----------------|--------------|-------------|----------------------|----------------------|-------------|-----------|--------------|-------------|-------------|--------------|
| | Lbs. | 3000 5000 | CBR 2500 | 2500 3000 5000 | 2500 3000 5000 | CBA 2160 | 2500 | 2500 3000 | 2500 | 3000 | 2500 3000 |
| Wt-lbs | valve w/handle | | | | | | | | | | |
| A - Ball Port | | 1.50 | 1.50 | 1.50 | 2.00 | 2.00 | 2.00 | 2.00 | 3.00 | 3.00 | 3.00 |
| B - end to end | | 5.50 | 5.50 | 5.50 | 5.75 | 7.62 | 7.62 | 7.62 | 8.37 | 8.37 | 8.87 |
| C - body end to stem CL | | 2.75 | 2.75 | 2.75 | 2.87 | 2.87 | 3.81 | 3.63 | 4.19 | 4.19 | 4.44 |
| D - valve CL to top pad | | 2.62 | 2.62 | 2.62 | 2.96 | 2.96 | 2.96 | 2.96 | 4.60 | 4.60 | 4.60 |
| E - top pad to stem end | | 1.03 | 1.03 | 1.03 | 1.03 | 1.03 | 1.03 | 1.03 | 1.31 | 1.31 | 1.31 |
| F - valve CL to top lever | | 5.41 | 4.94 | 5.41 | 5.75 | 5.75 | 5.75 | 5.75 | 7.42 | 7.42 | 7.42 |
| G - valve CL to lever end | | 15.00 | 8.00 | 15.00 | 15.00 | 15.00 | 15.00 | 15.00 | 15.00 | 15.00 | 15.00 |
| H - stem diameter | | .871/.873 | .871/.873 | .871/.873 | .871/.873 | .871/.873 | .871/.873 | .871/.873 | 1.235/1.240 | 1.235/1.240 | 1.235/1.240 |
| J - stem flats | | .554/.560 | .554/.560 | .554/.560 | .554/.560 | .554/.560 | .554/.560 | .554/.560 | .619/.622 | .619/.622 | .619/.622 |
| K - top works BC | | 1.750 | 1.750 | 1.750 | 1.750 | 1.750 | 1.750 | 1.750 | 2.250 | NA | 2.250 |
| L - hole diameter | | 1/4-20 | 1/4-20 | 1/4-20 | 1/4-20 | 1/4-20 | 1/4-20 | 1/4-20 | 5/16-18 | NA | 5/16-18 |
| M - number of holes | | 4 | 4 | 4 | 4 | 4 | 4 | 4 | 4 | NA | 4 |
| N | | 1.190 | 1.190 | 1.190 | 1.190 | 1.190 | 1.190 | 1.190 | 1.56 | NA | 1.56 |
| O | | 1.690 | 1.690 | 1.690 | 1.690 | 1.690 | 1.690 | 1.690 | 2.125 | NA | 2.125 |

DESIGN TORQUES FOR ACTUATOR SIZING (In.-Lbs)

| SIZE/PRESSURE | 2500 | 3000 | 5000 |
|---------------|------|------|------|
| 1.5 | 1400 | 1750 | 2700 |
| 2 | 1880 | 2350 | 3650 |
| 3 | 3650 | 4100 | NA |

FLOW COEFFICIENT (Cv)

| SIZE | 1.5 FP | 2 RP | 2 FP | 2.5 RP | 3 RP | 3 FP | 4 RP |
|------|--------|------|------|--------|------|------|------|
| Cv | 130 | 120 | 360 | 216 | 350 | 996 | 480 |



| DIMENSION | SIZE | 2 x 1.5 | 2 X 2 | 3 x 2 | 3 x 3 | 4 x 3 | 4 x 4 |
|---------------------------|----------------|--------------|--------------|--------------|-------------|-------------|--------------|
| | Lbs. | 1500 2000 | 1500 2000 | 1500 2000 | 1500 | 1500 | 1500 2000 |
| Wt-lbs | valve w/handle | | | | | | |
| A - Ball Port | | 1.50 | 2.00 | 2.00 | 3.00 | 3.00 | 4.00 |
| B - end to end | | 5.50 | 5.75 | 7.26 | 8.13 | 8.63 | 12.25 |
| C - body end to stem CL | | 2.75 | 2.87 | 3.63 | 4.07 | 4.32 | 6.05 |
| D - valve CL to top pad | | 2.62 | 2.96 | 2.96 | 4.60 | 4.60 | 5.13 |
| E - top pad to stem end | | 1.03 | 1.03 | 1.03 | 1.31 | 1.31 | 1.55 |
| F - valve CL to top lever | | 4.94 | 5.28 | 5.28 | 7.42 | 7.42 | 10.13 |
| G - valve CL to lever end | | 8.00 | 8.00 | 8.00 | 15.00 | 15.00 | 18.00 |
| H - stem diameter | | .871/.873 | .871/.873 | .871/.873 | 1.235/1.240 | 1.235/1.240 | 1.360/1.365 |
| J - stem flats | | .554/.560 | .554/.560 | .554/.560 | .619/.622 | .619/.622 | .742/.745 |
| K - top works BC | | 1.750 | 1.750 | 1.750 | 2.250 | 2.250 | NA |
| L - hole diameter | | 1/4-20 | 1/4-20 | 1/4-20 | 5/16-18 | 5/16-18 | NA |
| M - number of holes | | 4 | 4 | 4 | 4 | 4 | NA |
| N | | 1.190 | 1.190 | 1.190 | 1.56 | 1.56 | NA |
| O | | 1.690 | 1.690 | 1.690 | 2.125 | 2.125 | NA |

DESIGN TORQUES FOR ACTUATOR SIZING (In.-Lbs)

| SIZE/PRESSURE | 1500 | 2000 |
|---------------|------|------|
| 1.5 | 890 | 1120 |
| 2 | 1200 | 1500 |
| 3 | 2700 | 3200 |
| 4 | 4500 | 5000 |

FLOW COEFFICIENT (Cv)

| SIZE | 2 RP | 2 FP | 2.5 RP | 3 RP | 3 FP | 4 RP | 4 FP |
|------|------|------|--------|------|------|------|------|
| Cv | 120 | 360 | 216 | 350 | 996 | 480 | 1893 |