

## Installation, Operation, And Maintenance

# GUIDE I O M



### Installation

Install valve in piping system using proper size gaskets/seals rings or threaded end connections. Threaded valves require a thread sealant/lubricant for proper make-up.

**Caution:** *Inspect male pipe thread for damage (i.e. nicks, burrs ect.) prior to installation. Also, do not over tighten NPT connection or thread joint damage may occur.*

**Threaded-End valves should be installed using two pipe wrenches, one on the flats of the adapter or body and the other on the adjacent pipe. DO NOT apply wrench to the body section or opposite side when making up pipe as this may result in damage to the body or breaking loose the threaded adapter-to-body connection. In addition, all pipe sections should be properly supported to prevent excessive bending loads applied to the valve. **WARNING, weighted objects suspended on the downstream end of a threaded connection, create bending loads and may result in failure of the body to adapter connection.****

### Operation

AOP Ball Valves are recommended for on-off service only. Throttling may cause excessive non-uniform wear on seats, preventing tight shut-off. All AOP Ball Valves open by rotating handle in counter-clockwise direction.

### Maintenance

AOP Ball Valves are permanently lubricated during assembly and normally require no routine maintenance. However all Series CT, DT assemblies include an external stem lube fitting for periodic lubrication of stem journal if desired.

### Reconditioning

#### To replace seats, ball or body seal:

See exploded view on page two. Open valve, unscrew adapter (2) from body (1). Remove body seal(10). Turn ball (3) to the closed position and remove. Remove seats (4) with care to prevent damaging flats surfaces of the seat cavity in body and adapter. Clean seat cavities and body seal seating surfaces using fine emery. Replace seats and ball. Grease body seal and position it in its groove in the adapter. Replace adapter, assuring that it butts metal-to-metal against the body.

#### To replace Stem or Stem Seal:

With ball removed loosen locknut and lift handle/square nut from stem. Remove retainer (12), allowing removal of stop plate (10) and stem bearing (8). Remove stem (5), stem seals (11), and thrust bearing (9) through body bore. Clean stem journal in body using fine emery. Grease stem journal. Place thrust bearing and stem seals on stem in that order. Apply a coat of grease to all parts. Replace stem, using a wooded pry against the bottom of the stem if necessary. Assure that the stem seals are not pinched during re-assembly. Replace stem bearing, stop plate and retainer. Reaffix handle/square nut on stem and tighten locknut. Reassembly valve as above.

The World Standard in Quality Flow Management Products and Service

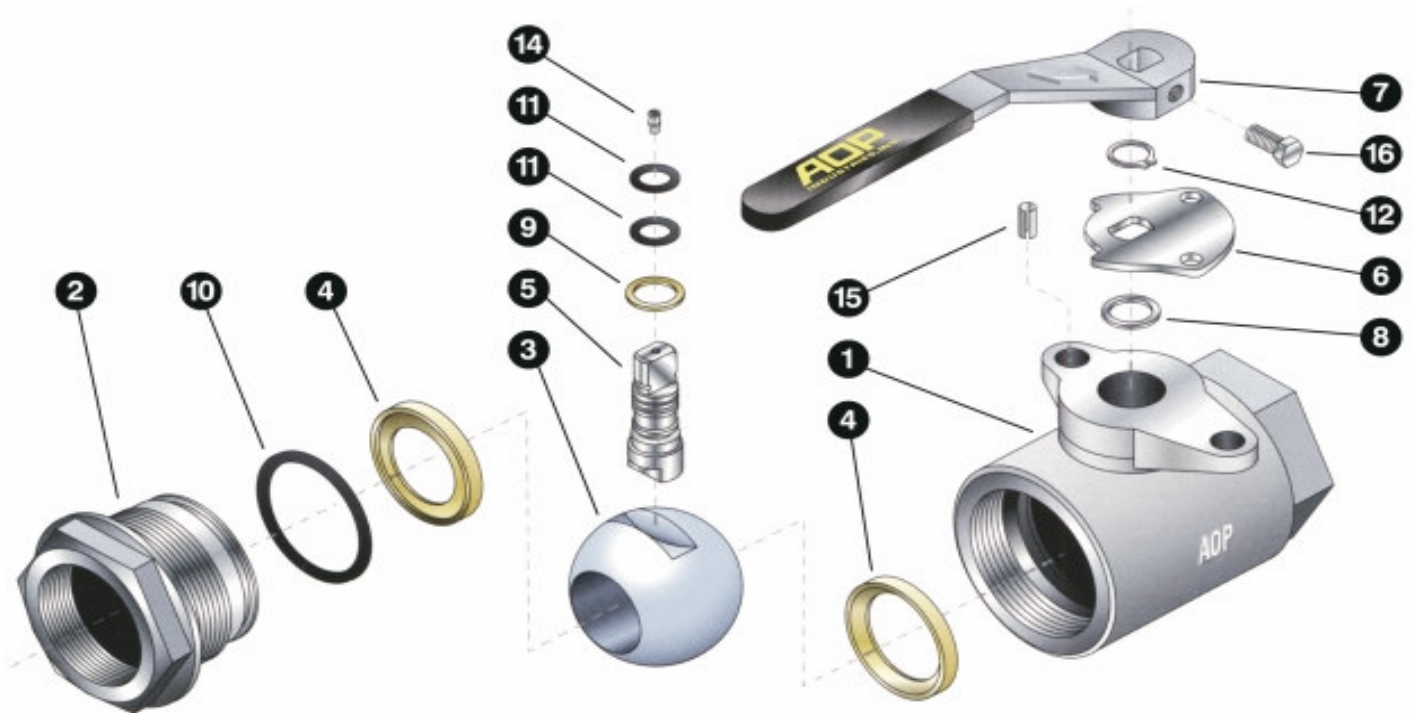
2101 South Broadway  
Moore, Oklahoma 73160  
P.O. Box 6979  
Moore, Oklahoma 73153-0979  
<http://www.aopind.com>



Tel: 405/912-4446  
Toll Free: 800-654-4493  
Fax: 405/912-4440  
Email: [sales@aopind.com](mailto:sales@aopind.com)

# AOP SERIES CT, DT Floating Ball Valve

## Component Parts, **GUIDE**



### Parts List

No.	Description	No.	Description	No.	Description	No.	Description
1	Body	5	Stem	9	Thrust Bearing	14	Lube Fitting
2	Adapter	6	Stop Plate	10	Body Seal	15	Stop Pin
3	Ball	7	Handle	11	Stem Seal	16	Handle Bolt
4	Seat	8	Stem Bearing	12	Retainer Ring		

The World Standard in Quality Flow Management Products and Service

2101 South Broadway  
 Moore, Oklahoma 73160  
 P.O. Box 6979  
 Moore, Oklahoma 73153-0979  
<http://www.aopind.com>



Tel: 405/912-4446  
 Toll Free: 800-654-4493  
 Fax: 405/912-4440  
 Email: [sales@aopind.com](mailto:sales@aopind.com)