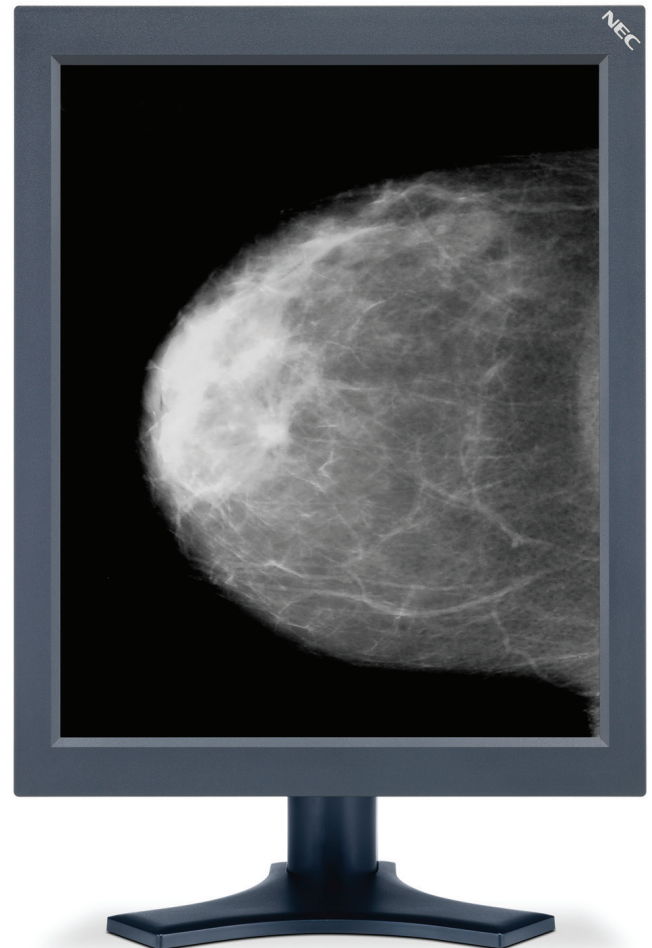


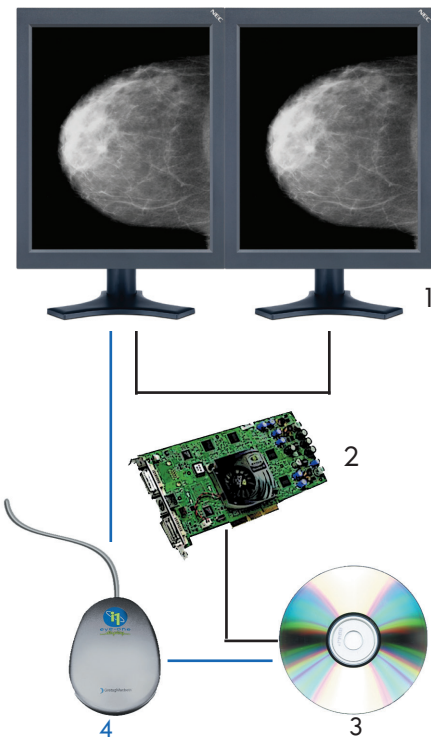
NEC MultiSync® MD205MG

20.1" grayscale medical-grade LCD display
ideal for ultra-high-resolution diagnostic imaging

- Specially designed for demanding applications including mammography and radiology, the 20.1" NEC MultiSync MD205MG (5MP display) features a resolution of 2048 x 2560 and a pixel pitch value of less than or equal to 0.156mm for film-like image reproduction without pixelization
- NEC's Super Advanced SFT In-Plane Switching (IPS) LCD technology provides accurate grayscale reproduction as well as fast response times for moving images and extremely wide viewing angles
- 11.5-bit lookup table (LUT) and 10-bit conversion algorithm and dithering technology reproduces up to 1024 shades of gray from a palette of 3061.
- DICOM GSDF conformance produces images that are visible in a linear manner to the human eye, guaranteeing precise image reproduction for diagnosis
- Integrated backlight sensor constantly monitors and adjusts brightness and maintains the factory DICOM GSDF calibration.
- With its DICOM calibration, 10-bit conversion algorithm and dithering technology, and clear, precise images, the MD205MG has been built to support the most demanding Picture Archiving and Communication Systems (PACS) and modality requirements
- The MD205MG's design combines the best in form and function to meet ergonomic standards and provide users with flexibility and ease of use. Features include a durable base that can be easily adjusted for tilt, swivel and height based on the user's preferences. The VESA-compliant display also pivots between portrait and landscape orientation.
- FDA 510(k) approved for use in digital mammography applications, meeting the highest standards for diagnostic displays
- Design includes durable base that easily adjusts for tilt, swivel, height and portrait/landscape orientation



NEC MULTISYNC MD SERIES The clear choice in diagnostic displays.



A typical NEC MultiSync MD Series display system configuration

- 1 Single or dual head displays
- 2 Display controller board
- 3 GammaComp MD quality control software
- 4 Calibrator (optional)

Industry-leading standard limited warranty

- 5 years
- Advanced Overnight Exchange ships a replacement monitor to arrive the next business day with NEC covering the cost of shipping both ways

Model	MultiSync MD205MG
LCD Viewable Image Size	20.1"
LCD Module Technology	SA-Superfine Grayscale TFT Glass
Active Screen Area	31.9 x 39.9 cm
Native Resolution	2560 x 2048 Landscape/2048 x 2560 Portrait
Pixel Pitch	0.156mm
Brightness at Native (typical)	850 cd/m ² max / 400 cd/m ² calibrated
Contrast Ratio (typical)	600:1
Response Time (typical)	30ms
Viewing Angle (typical) (up/down/left/right)	85°/85°/85°/85°
Grayscale Tone	10-bit: 1024 shades of gray from a pallet of 3061
Input Connectors	Dual Link DVI-D
Selectable Gamma	DICOM, log-linear, 2.2 and programmable
Factory calibration	Gamma correction according to DICOM GSDF with automatic adjustment
X-Ray film simulation	Clear Base
Power Supply	Internal, AC 100-240V, 50/60 Hz nominal
Power Consumption (typical)(120V)	65W
Power Savings	< 3W
Tilt / Swivel Stand	+30°, -5° / 340°
Height Adjustable Stand	120mm
Pivot Enabled Stand	Yes
VESA Mounting	100 x 100mm
Dimensions (WxHxD)	18.7 x 18.3 x 9.7 in. / 474.3 x 465.3 x 247.3mm (Landscape) 14.9 x 20.2 x 9.7 in. / 379.6 x 512.7 x 247.3mm (Portrait)
Bezel Width	28mm
Net Weight, including stand	25.8 lbs. / 9.8 kg.
Regulatory Standards	UL2601/EN60601-1/EC601, FCC part 15 class B, CE/MDD, PCT, C-tick, PCBC/B Mark, PSB, EnergyStar, GEEA Energy Label, DIN 6868-57, FDA-510(k)
Display Video Cards (preferred)	MDRV10B-5MP
Remote Network Sensor (optional)	Sentry ^{DX} (MD-N2M5B)
Colorimeter	GammaComp MD Sensor (MDSVSENSOR)
Limited Warranty*	5 years parts and labor, including Advanced Overnight Exchange
Extended Warranty (addtl. 1 yr./addtl. 2 yr.)	EW1-MD2MP21 / EW2-MD2MP21

* Backlight usage limited to 30,000 hours at 400 cd/m² or less

Display video card	MDRV10B-5MP
Bus Interface	PCIe x 1
Output Signal	DVI x 2 / 8- or 10-bit grayscale
Display Resolutions (portrait)	2048 x 2560 (single head) / 4096 x 2560 (dual head)
Dot Clock	165 Mhz
Maximum Power Consumption	25.8W
System Requirements	
Compatible OS	Microsoft Windows XP / 2000 / XP x64
Host Processor Frequency	500 MHz or greater
Main Memory	256 MB or greater

NOTE 1: American College of Radiology (ACR) recommends minimum of 171 cd/m²



MultiSync is a registered trademark of NEC Display Solutions. All other brand or product names are trademarks or registered trademarks of their respective holders. Product specifications subject to change. 12/09 Ver. 3.

©2009 NEC Display Solutions of America, Inc. All rights reserved.

NEC Display Solutions

500 Park Boulevard, Suite 1100
Itasca, IL 60143
866-NEC-MORE

