

EPSON

EpsonScript Level 2 Macintosh™ User's Guide C83202*/C83209*

English

Deutsch

Français

Español

Italiano



EPSON®

**EpsonScript™ Level 2
Macintosh
User's Guide**

EpsonScript Level 2 Cartridge
(C83202*)
and EpsonScript Level 2 Board
(C83209*)

All rights reserved. No part of this publication may be reproduced, stored in a retrieval system, or transmitted in any form or by any means, mechanical, photocopying, recording or otherwise, without the prior written permission of Seiko Epson Corporation. No patent liability is assumed with respect to the use of the information contained herein. Neither is any liability assumed for damages resulting from the use of the information contained herein.

Neither Seiko Epson Corporation nor its affiliates shall be liable to the purchaser of this product or third parties for damages, losses, costs, or expenses incurred by purchaser or third parties as a result of: accident, misuse, or abuse of this product or unauthorized modifications, repairs, or alterations to this product, or (excluding the US) failure to strictly comply with Seiko Epson Corporation's operating and maintenance instructions.

Seiko Epson Corporation shall not be liable against any damages or problems arising from the use of any options or any consumable products other than those designated as Original EPSON Products or EPSON Approved Products by Seiko Epson Corporation.

The EpsonScript Level 2 Cartridge or Board is a customized product based on PhoenixPage Level 2 developed by Phoenix Technologies Ltd.

EPSON is a registered trademark of Seiko Epson Corporation.

ActionLaser and SelecType are trademarks and EPSON Connection is a service mark of Epson America, Inc.

Apple, Macintosh, LaserWriter, AppleTalk, TrueType, and LocalTalk are registered trademarks of Apple Computer, Inc.

ITC Avant Garde, ITC Bookman, ITC Zapf Chancery, ITC Zapf Dingbats are registered trademarks of International Typeface Corporation.

Bookman and Century Schoolbook are registered trademarks of Kingsley-ATF Type Corporation.

Helvetica Narrow and Palatino are registered trademarks of Linotype AG and/or its related companies.

Phoenix MultiGray is a registered trademark of Phoenix Technologies Ltd.

PostScript is a registered trademark of Adobe Systems, Inc.

Swiss and Dutch are registered trademarks of Bitstream Inc.

General notice: Other product names used herein are for identification purposes only and may be trademarks or registered trademarks of their respective owners. EPSON disclaims any and all rights in those marks.

EpsonScript Driver, Copyright © 1992,1993
PhoenixPage PS2 Driver, Copyright © 1992,1993
COMPUTER:applications, Inc., Copyright © 1988-1993
All Rights Reserved

Copyright © 1994 by Seiko Epson Corporation, Nagano, Japan

Contents

Introduction

Features	1
Where to Get Help in the U.S.	2
Before You Install the Option	3
Hardware requirements	3
System and memory requirements	4
Unsupported software programs	5
Care and handling	5

Chapter 1 Setting Up

Installing Your Hardware	1-2
Installing the EpsonScript cartridge	1-2
Installing the EpsonScript board	1-3
Selecting the EpsonScript Emulation Mode	1-5
EPL-5000/5200 and ActionLaser 1000/1500	1-6
EPL-5600 and ActionLaser 1600	1-6

Chapter 2 Installing the Software

Installing the Printer Driver	2-2
Easy installation	2-2
Customize installation	2-4
Selecting the EpsonScript Driver	2-6

Chapter 3 EpsonScript Driver Print Settings

Using the EpsonScript Driver	3-2
Page Setup and Print menus	3-2
Page Setup Parameters	3-4

Advanced Options	3-5
General	3-6
Visual Effects	3-6
Resolution Improve	3-8
Dot Screen	3-8
Printing Resolution	3-8
Error Sheet	3-8
Fonts Menu Options	3-9
Print Menu Options	3-11

Chapter 4 Using the EpsonScript Utility

Managing Your Printer	4-2
Using the EpsonScript Utility to Manage Fonts	4-4
Displaying a list of printer fonts	4-4
Downloading fonts	4-4
Removing downloaded fonts	4-6
Getting Information About the Printer	4-7
Printing PostScript Files	4-8
Renaming the Printer	4-9
Additional EpsonScript Utility Features	4-10
Sending commands to the printer	4-10
Resetting the printer	4-11
Enabling or disabling the startup page	4-11

Chapter 5 EpsonScript SelectType Settings

Changes to SelectType	5-2
EPL-5000/5200 and ActionLaser 1000/1500	5-2
Level 1 changes	5-2
Level 2 changes	5-5
Status and error messages	5-5
EPL-5600 and ActionLaser 1600	5-7
PS MENU	5-7
TEST MENU	5-8

Appendix A Specifications

Appendix B Character Tables

Index

Introduction

The EpsonScript™ Level 2 option gives your EPSON® printer the ability to print documents formatted for PostScript® Level 1 and Level 2. When installed, the EpsonScript option enables your printer to emulate an Apple® LaserWriter® IIg printer.

The EpsonScript option can be either a cartridge (C83202*) you insert in the front of the printer or a board (C83209*) that you install in the printer. The particular option you need depends on your printer type. See “Hardware requirements” for more information.

This manual describes how to install and use your EpsonScript option and is intended to supplement the information in your printer manual. Most sections in this guide apply to both the cartridge and board, while other sections apply to only one option.

Features

The EpsonScript option provides you with the following high-performance features:

- ❑ Ability to print documents formatted for PostScript printers. You can easily print text, line art, and graphics.
- ❑ Two print modes: Banding mode and Page Protect mode. Banding mode uses less memory, allowing you to print with at least 1.5 MB (for the C83202* cartridge) or 2 MB (for the C83209J* board) of memory. Page Protect mode allows you to allocate memory for a full page image.
- ❑ Phoenix MultiGray® (C83202* cartridge) and MicroGray (C83209* board only) features that enhance grayscale images to produce higher quality grayscale images than is possible in normal PostScript mode.

- ❑ Thirty-five fonts in 11 font families. Fonts include Fixed Pitch 810 Courier, Dutch® 801 Roman, Swiss® 721, Geometric ITC Avant Garde® Revival 711 ITC Bookman®, Swiss 721 Narrow, Century 702 Century Schoolbook®, Zapf Calligraphic 801, ITC Zapf Chancery® Medium Italic, ITC Zapf Dingbats®, and Symbol.
- ❑ IES (Intelligent Emulation Switch) and SPL (Shared Printer Language) support to allow the printer to switch between EpsonScript emulation and other emulations as print data is received at the printer.
- ❑ EPSON quality, reliability, and ease of operation.

Where to Get Help in the U.S.

Epson America provides local customer support and service through a nationwide network of authorized EPSON dealers and Service Centers.

EPSON also provides support services through EPSON ConnectionSM at (800) 922-8911.

Before You Install the Option

Read the following sections before installing your EpsonScript option.

Hardware requirements

To use EpsonScript with Macintosh[®] computers, you must use the appropriate option with one of the printers listed in the following table. You must also install the LocalTalk[®] interface (C8231*) in your printer and obtain LocalTalk cables to connect the printer to the computer or AppleTalk[®] network. You cannot use the serial interface.

Option	Printers
EpsonScript Level 2 cartridge (C83202*)	EPL-5000/5200 ActionLaser™ 1000/1 500
EpsonScript Level 2 board (C83209*)	EPL-5600 ActionLaser 1600

Other printers might support the EpsonScript option. If you purchased an EpsonScript printer after January 1994 and it is not listed in the table, ask your EPSON representative if your printer supports EpsonScript.

Note:

The EpsonScript option will not work if the optional EPSON PostScript card (C82609) or EPSON GL card (C82604*) is installed in your printer.*

System and memory requirements

Any Macintosh computer to which the printer is connected must be running System 7.x and have at least 2 MB of RAM.



Caution:

Do not install EpsonScript on a computer running System 6.x or earlier. Installing EpsonScript on early systems can corrupt them.

The memory requirements for your printer depend on which option and printer you are using. Make sure your printer has the minimum amount of memory required for your option as shown in the following table.

Option	Minimum winter memory
EpsonScript Level 2 cartridge (C83202*)	1.5 MB
EpsonScript Level 2 board (C83209*)	2MB

You may need to add more memory if you regularly print documents with detailed graphics, complex layouts, or paper larger than A4 or letter size. Also, if you use the Page Protect mode, you may need more memory than shown in the table.

By reducing resolution to 300 dpi, you can save memory.

If you have an EPL-5000/5200 or an ActionLaser 1000/1500 and you want to connect it to more than one computer, you must assign at least the minimum amount of required memory to the channel using the EpsonScript option. See your printer manual for more information.

Unsupported software programs

The following programs are not supported by EpsonScript:

☐ LaserTalk™

☐ SmartArt™

Because of differences in type design, the TrueType® fonts printed by your printer might not exactly match fonts printed by an Apple LaserWriter IIg.

Cure and handling

Follow these guidelines when using the EpsonScript option:

- ☐ Do not drop or bend the option.
- ☐ Do not store the option in direct sunlight or near a heat source.
- ☐ Make sure the printer is turned off when you insert or remove the option; otherwise, you can damage the option or the printer.
- ☐ Do not touch the connectors. If the connectors become dirty, clean them by wiping the edge with a clean tissue. Do not use water, alcohol, or other solvents.

Chapter 1

Setting Up

Installing Your Hardware	1-2
Installing the EpsonScript cartridge	1-2
Installing the EpsonScript board.	1-3
Selecting the EpsonScript Emulation Mode	1-5
EPL-5000/5200 and ActionLaser 1000/1500	1-6
EPL-5600 and ActionLaser 1600	1-6

Installing Your Hardware

The following two sections describe how to install the EpsonScript cartridge or board. Use the procedure that applies to your option.

After you install the hardware, you need to select the EpsonScript emulation mode on your printer and then select the printer type using your software.

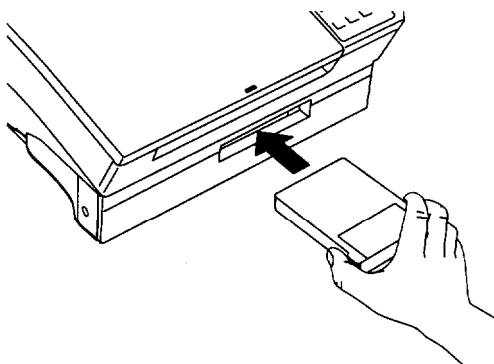
Installing the EpsonScript cartridge

The following procedure describes how to install the EpsonScript cartridge if you have an EPL-5000/5200 or ActionLaser 1000/1500.



Caution:

- ☐ *Do not insert the cartridge while the printer is on.*
 - ☐ *Do not touch the connectors on the cartridge or in the printer's cartridge slot; you can damage them.*
1. Turn off the printer if it is not already off.
 2. With the label up, insert the cartridge as shown below:



3. Gently slide the cartridge into the slot until it locks in place.
4. Turn on the printer.

Once you insert the cartridge, you need to use SelectType™ to select the EpsonScript emulation mode. See “Selecting the EpsonScript Emulation Mode” later in this chapter.

To remove the cartridge, turn off the printer and remove the cartridge by grasping it at the center and gently pulling it straight out.

Installing the EpsonScript board

This section describes how to install the EpsonScript board if you have an EPL-5600 or ActionLaser 1600 printer.

You install the EpsonScript board on the printer's controller board. To install the EpsonScript board, you need to first remove the controller board as described in the "Options" chapter of your printer manual.

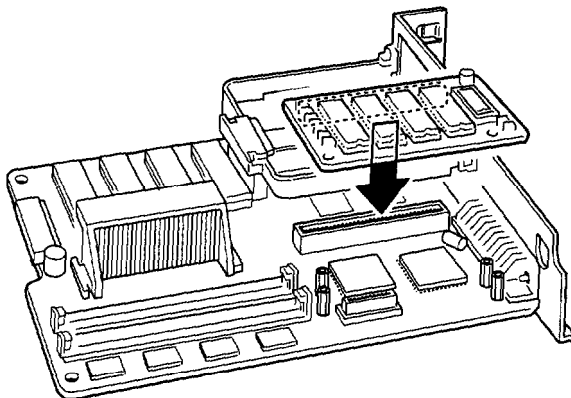


Caution:

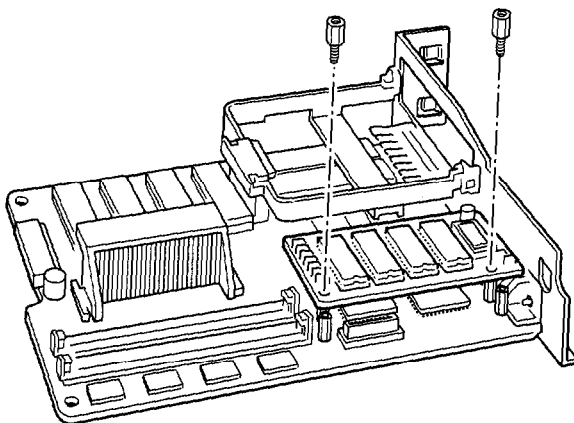
Do not attempt to remove the controller board unless the printer is off and the power cord is unplugged. Removing the controller board exposes the electrical components inside the printer. These components may be very hot if the printer has been used recently. Also, try not to touch the contacts on the board because many of the components can be damaged by static electricity.

After you remove the controller board, do the following:

1. Hold the EpsonScript board with the CN1 connector facing down and insert it into the CN3 connector on the controller board as shown below.



2. Press the EpsonScript board in firmly until it stops secure the EpsonScript board with the screws that come with it.



3. Reinsert the controller board.

For instructions on reinserting the controller board, see your printer manual.

4. Print a status sheet to verify that the EpsonScript board is properly installed.

See your printer manual for instructions on printing a status sheet.

To remove the EpsonScript board, remove the interface cover, remove the controller board, detach the EpsonScript board, reinsert the controller board, and attach the interface cover.

Selecting the EpsonScript Emulation Mode

You need to change the emulation mode through SelecType before you can use the EpsonScript option.

How you use SelecType to change the emulation mode depends on the printer type. See the section below that applies to your printer.

EPL-5000/5200 and ActionLaser 1000/1500

First decide what interface channel to use for EpsonScript mode. Then in the SelecType EMULATION menu, change the printer mode to SCRPT2 or any one of the multiple emulation modes that includes PS (PS&LJ-2P, PS&3/P/Si, PS&LQ).

See your printer manual for information on using SelecType.

Note:

If a SAVE MEMORY OVERFLOW error (wording may vary slightly depending on the printer) occurs when you are setting the printer emulation mode, you must delete a macro used in other printer modes and try to change the printer mode again. This error occurs when the current printer mode or modes use too much EEPROM memory for storing macros and there is not enough EEPROM memory for EpsonScript mode.

EPL-5600 and ActionLaser 1600

If you install an optional LocalTalk interface and the EpsonScript board together, the printer automatically sets the emulation for the LocalTalk (L/T interface) to PS.

Chapter 2

Installing the Software

Installing the Printer Driver	2-2
Easy installation	2-2
Customize installation	2-4
Selecting the EpsonScript Driver	2-6



Installing the Printer Driver

The Installer program that is included with EpsonScript installs the EpsonScript driver, the EpsonScript Utility for changing printer parameters, and the screen fonts.

The installer program has two installation methods: easy installation and customize installation.

Easy installation installs all EpsonScript files and screen fonts if any font is not already installed on your computer. Normally you should use the easy installation since this ensures that all necessary files are copied and that the computer environment is modified to give you the full benefit of the EpsonScript option.

The customize installation installs only the files that you specify. You might want to use the customize installation if you are low on memory and want to install only those files that are absolutely required. However, if you have enough memory, it is recommended that you do the easy installation.

Easy Installation

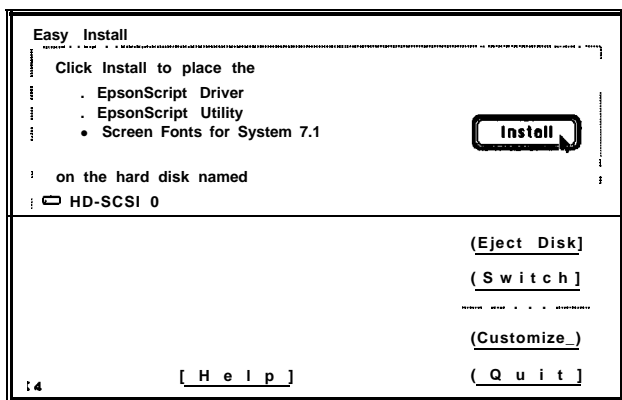
If your Macintosh runs any software programs (such as a virus checker) automatically when the power is turned on, quit the applications before running the Installer.

1. Turn on your Macintosh if it is not already on.
2. Insert Disk 1 (Installation) into your computer. The Printing Tools icon automatically opens.

3. Double-click the Installer icon. The following dialog box appears:



4. Click OK. The Installer then shows the following menu:



5. Make sure the hard disk to which you want to install EpsonScript is shown.

To select a different disk, click Switch Disk until the appropriate disk is displayed.

6. Click Install to install the EpsonScript files.
7. Follow the screen prompts that prompt you to remove and insert disks.

If any of the necessary screen fonts are not already installed on your hard disk, the Installer prompts you to insert and then remove Disk 2 (Screen Fonts). If all the screen fonts are already on your hard disk, you are not prompted to insert Disk 2.

8. When installation is complete, follow the instructions on the screen.

Click Restart or Quit as appropriate.

This completes installation of the EpsonScript software. You now need to select the EpsonScript printer driver; see “Selecting the EpsonScript Driver” later in this chapter.

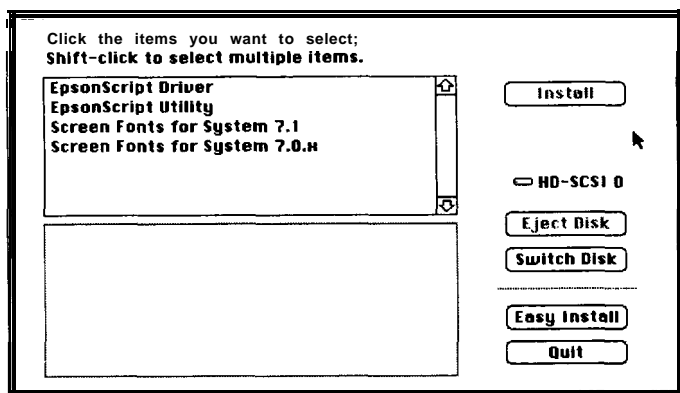
If you are connecting two or more EPSON printers of the same model using AppleTalk, you must rename one printer to distinguish it from other printers. See the section “Renaming the Printer” in Chapter 4.

Customize installation

If your Macintosh runs any applications automatically (such as a virus checker) when the power is turned on, quit these applications before running the Installer.

To do a customize installation in which you explicitly specify which EpsonScript software to install, follow steps 1 to 5 of the easy installation (see previous section) and then do the following:

6. Click Customize to open the Customize Installation dialog box.



You can perform the easy installation by clicking Easy Install.

7. Click the item(s) you want to install. If you install a single item only, the product information for that item is displayed at the bottom of the screen.

To select multiple items, hold down the SHIFT key while selecting items.

8. Once the items you want to copy are selected, click Install to begin installation.
9. Follow the screen prompts that prompt you to remove and insert disks.

If you selected to install the screen fonts, the Installer prompts you to insert and then remove Disk 2.

10. When installation is complete, follow the instructions on the screen.

If you install the screen fonts, you are prompted to restart the system. If you did not install the screen fonts, you are prompted to quit the Installer. Click Restart or Quit as appropriate.

This completes installation of the EpsonScript software. You now need to select the EpsonScript printer driver as described in the next section.

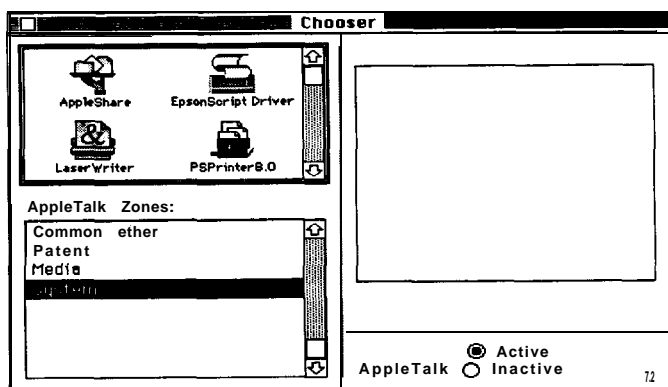
If you are not able to print after you complete the customize installation, perform the easy installation to copy the necessary files and modify your system settings.

If you are connecting two or more printers of the same model using AppleTalk, you must rename one printer to distinguish it from other printers. See the section “Renaming the Printer” in Chapter 4.

Selecting the EpsonScript Driver

To use EpsonScript, you need to select the printer using the Chooser as described below.

1. Under the Apple menu, select Chooser. This opens the Chooser dialog box.



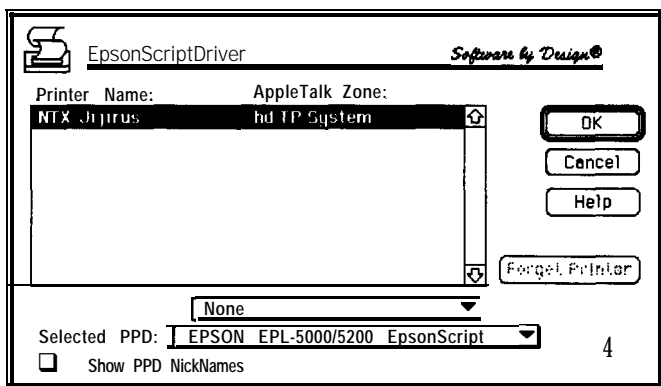
2. Make sure that AppleTalk is active.
3. Click the EpsonScript Driver icon to select it. The name of your printer appears in the Select a PostScript Printer box.
4. Click on the name of your printer to select it. The Setup button and the radio button for Background Printing appear.
5. If appropriate, click the AppleTalk zone your printer is connected to in the AppleTalk Zones list.

If your computer is connected to only one AppleTalk zone, ignore this step.

Note:

You can select the background printing feature that allows you to proceed with other work while printing. To enable this feature, click the On radio button. Refer to your computer manual for more information.

6. Click the Setup button; you then see the following dialog box.



7. Click the Selected PPD button and scroll down to select the PPD (PostScript Printer Description file) for each printer. Then, click OK.

If you use a color printer, change Color Correction to PostScript® calibrated color.

If you want to see only the PPD filenames, click Show PPD NickNames to erase the check.

If you need to cancel the PPD you previously selected, click the Forget Printer button.

8. Close the Chooser. The system then displays a message warning you that you need to change settings in the Page Setup menu.
9. Click OK to close the message dialog box.

Chapter 4

Using the EpsonScript Utility

Managing Your Printer	4-2
Using the EpsonScript Utility to Manage Fonts	4-4
Displaying a list of printer fonts.	4-4
Downloading fonts.	4-4
Removing downloaded fonts	4-6
Getting Information About the Printer	4-7
Printing PostScript Files	4-8
Renaming the Printer	4-9
Additional EpsonScript Utility Features	4-10
Sending commands to the printer	4-10
Resetting the printer	4-11
Enabling or disabling the startup page	4-11

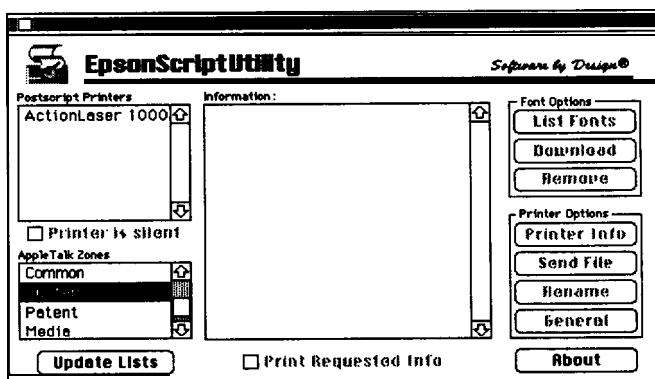
Managing Your Printer

The EpsonScript Utility allows you to manage your printer from a Macintosh computer. The EpsonScript utility will also work with other Epson or PostScript printers. With it, you can do the following:

- ☐ Display a list of fonts stored in the printer, download additional fonts, and remove any downloaded fonts.
- ☐ Find out information about the printer, such as the driver version, the number of pages printed, and amount of printer memory.
- ☐ Print PostScript files without the use of a software program.
- ☐ Rename the printer.
- ☐ Send control commands to the printer, reset the printer, enable or disable the startup page, and edit control commands.

The EpsonScript Utility is installed on your hard disk during installation. (If you did a customize installation, you might not have installed the utility.)

To use the utility, first use the Chooser to select the printer whose settings you want to change. Then bring up the EpsonScript Utility by opening your hard disk and double-clicking on the EpsonScript Utility icon. This brings up the dialog box shown on the following page.



The EpsonScript Utility dialog box allows you to view all EpsonScript and PostScript printers that are connected to the selected AppleTalk zone. Click the printer whose settings you want to change. If your network is divided into zones, only those printers in the selected zone will be displayed. If you cannot find your printer, it might be connected to another AppleTalk zone.

If you still cannot find a printer, it might be because the printer you are looking for was disconnected when you started the utility. Update the PostScript Printers and AppleTalk Zones information by clicking the Update Lists button.



Caution:

Some features enable you to remove data from your printer, such as fonts in your printer's RAM and on the hard disk. Make sure you have backup copies of this data before you delete it.

The Printer is Silent radio button disables the bidirectional communication between your computer and printer and any messages from your printer are ignored. If Printer is Silent is selected, you cannot get printer information or font lists.

Using the EpsonScript Utility to Manage Fonts

The Fonts button in the EpsonScript Utility allows you to list the fonts currently stored in the printer, download fonts from your computer to the printer, and remove downloaded fonts.

Displaying a list of printer fonts

To display a list of resident and downloaded fonts available on your printer:

1. Bring up the EpsonScript Utility and select your printer using PostScript Printers and AppleTalk Zones.
2. Click the List Fonts button.

Downloading fonts

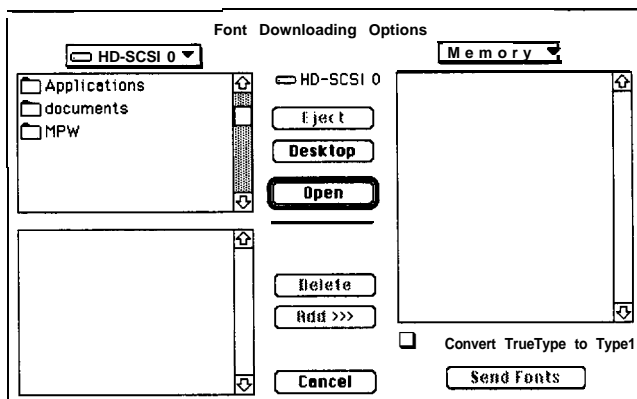
The Download button downloads fonts from your computer to your printer. Fonts downloaded in this way remain at the printer until you turn off the printer or reset it.

You do not have to use the EpsonScript Utility to download fonts even if your printed document requires downloaded fonts (the fonts will be downloaded automatically when you print); however, using EpsonScript to download fonts can sometimes reduce the time it takes to print. This is because the fonts you explicitly download are handled in the same way as resident fonts and remain in printer memory until you turn off or reset the printer.

To download fonts, do the following:

1. Bring up the EpsonScript Utility and select the printer to which you want to download fonts using PostScript Printers and AppleTalk Zones.

2. Click the Download button. The following dialog box appears:



3. In the top left box, locate the folder or folders that contain the fonts you want to download.
4. Open the folder by double-clicking on it or by clicking the Open button. The fonts in the folder are displayed in the lower left box.
5. Select the fonts you want to download.
6. Click the Add button. The fonts to be downloaded are displayed at the right of the dialog box.

Most printers can download fonts to memory only, so Memory is normally displayed at the top of the list of fonts to be downloaded. However, if your printer has another device (such as a hard disk), click Memory and scroll to the device.

If you want to remove fonts from the list of fonts to be downloaded, select the font at the right of the dialog box and click Delete.

Note:

*By default, TrueType fonts are converted to PostScript Type 1 format before being downloaded. If you do not want them converted, disable **the Convert TrueType To Type 1 box**.*

7. Once you have selected and added the fonts you want to download, click Send Fonts. This transfers the fonts from your computer to the printer.
8. Click the Close box to exit.

Removing downloaded fonts

To remove downloaded fonts from printer memory:

1. Bring up the EpsonScript Utility and select the printer using PostScript Printers and AppleTalk Zones.
2. Click the Remove button. This brings up a dialog box that allows you to remove downloaded fonts. The fonts currently downloaded to the printer are shown to the left of the screen.
3. Select the font(s) you want to remove (or type in the name of the font in the text box at the bottom of the dialog box) and click Add. The fonts to be removed are then listed at the right of the dialog box.

If you decide not to remove a font, select the font and click Delete. The font is deleted from the list of fonts to be removed.

4. When all the fonts have been added to the list of fonts to be removed, click Remove Fonts.
5. Close the dialog box by clicking Cancel.

Getting Information About the Printer

The Printer Info option of the EpsonScript Utility allows you to view information about any of the printers attached to the AppleTalk network. The information displayed includes the following:

- ☐ The printer name and firmware version
- ☐ PostScript level and version
- ☐ Amount of printer memory
- ☐ Number of pages printed

Additional information might also be shown, depending on your printer.

To view printer information:

1. Bring up the EpsonScript Utility and select the printer using PostScript Printers and AppleTalk Zones.
2. Click the Printer Info button.

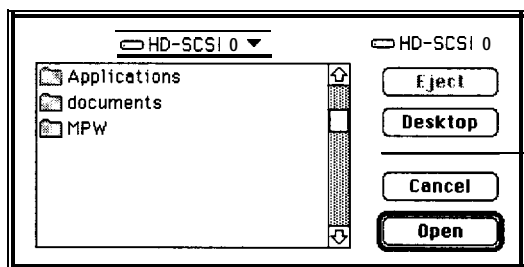
You can also print information about your printer if you first click the Print Requested Info check box before clicking the Printer Info button.

Printing PostScript Files

The Send File option allows you to print an EpsonScript or PostScript file without having to open a software program. It does not allow you, however, to print other types of files.

To print an EpsonScript or PostScript file:

1. In the EpsonScript Utility dialog box, click Send File. This brings up the following dialog box.

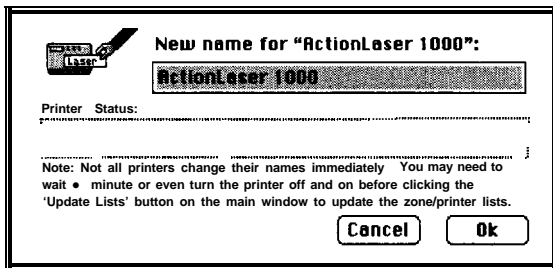


2. Select an EpsonScript or PostScript file.
3. Click Open. This sends the file to the printer.
4. Click Cancel to close the dialog box.

Renaming the Printer

If you are connecting two or more printers of the same model using AppleTalk, you need to rename the printer. To do so:

1. Bring up the EpsonScript Utility and select your printer using PostScript Printers and AppleTalk Zones.
2. Click the Rename button. This brings up the following dialog box:

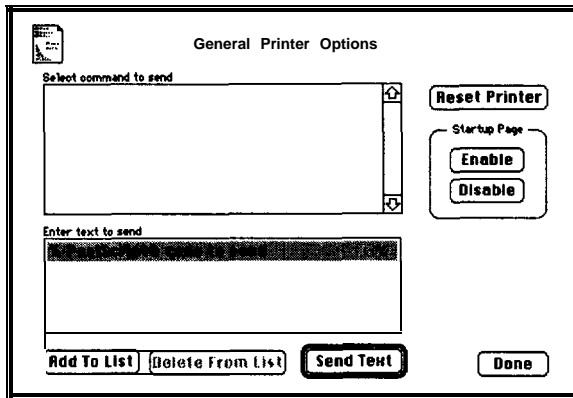


3. Type in a unique name for your EpsonScript or PostScript printer.
4. Click OK.
5. Click the Close button.

Additional EpsonScript Utility Features

The General option allows you to send control commands to the printer, reset the printer, and enable or disable the startup page.

When you click the General option, the following dialog box appears:



Sending commands to the printer

The General Printer Options dialog box allows you to send any command in ASCII language. To send a command:

1. Bring up the EpsonScript Utility and select your printer using PostScript Printers and AppleTalk Zones.
2. Click the General button.
3. In the General Printer Options dialog box, type a command string in the Enter text to send list box.
4. Click the Add to List button. The command you type now appears in the Select command to send list box.

If you want to delete a command that appears in the Select command to send list, select the command and click Delete From List.

5. In the Select command to send list box, select the command line you want to send to the printer.
6. Click Send Text. This sends the selected command line to the printer.
7. Click Done to close the General Printer Options dialog box.

Resetting the printer

The Reset option of the General Printer Options dialog box allows you to reset the printer. When you use the EpsonScript reset option, the printer software is reset, causing the printer settings to be changed to the defaults and print jobs to be canceled. This software reset feature is not the same as the hardware reset feature available on the printer.

Enabling or disabling the startup page

The startup sheet is a page that prints automatically each time you turn on the printer. It contains information about the printer status. Click Enable if you want the startup page printed; click Disable if you do not want the startup sheet printed.

The startup page may not be available on all printers.

Chapter 3

EpsonScript Driver Print Settings

Using the EpsonScript Driver	3-2
Page Setup and Print menus	3-2
Page Setup Parameters	3-4
Advanced Options	3-5
General	3-6
Visual Effects	3-6
Resolution Improve	3-8
Dot Screen	3-8
Printing Resolution	3-8
Error Sheet	3-8
Fonts Menu Options	3-9
Print Menu Options	3-11

Using the EpsonScript Driver

The EpsonScript driver enables you to use your software to change parameters for your print job. The parameters fall into three major areas:

- ❑ Page layout parameters, including the ability to specify the page size, orientation, and other parameters that affect the page to be printed.
- ❑ Font parameters, such as the ability to add fonts to the PPD list of fonts and to convert TrueType fonts to Level 1 PostScript fonts.
- ❑ Advanced options that allow you to add a banner page, flip images, specify the type of bitmaps, specify the RITech setting, and control other effects such as the dot pattern and underlining.

The specific options might vary, depending on your software program.

Page Setup and Print menus

You access the EpsonScript driver parameters by selecting Page Setup or Print in your software program. Selecting Page Setup and Print, both of which are located in the File menu, brings up dialog boxes with options that allow you to change printer parameters.

Many of the same parameters are available for both Page Setup and Print. However, the Print menu contains additional options specific to printing such as the number of copies, the range of pages to print, the paper source, and other options. These options are described in “Print Menu Options” later in this chapter.

Both menus have the following buttons:

Cancel

This button exits the dialog box, without saving any changes you made.

About

This button displays version information about the driver. To exit the About dialog box, click anywhere in the dialog box.

Help

This button allows you to view help text for the options in the Page Setup or Print menu.

Options

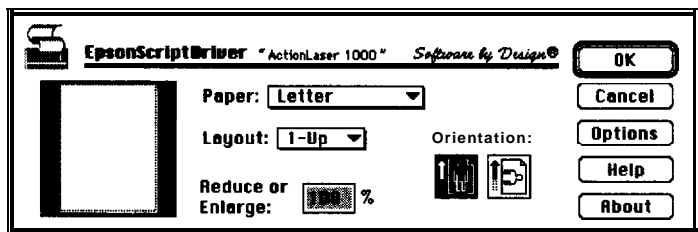
This button opens the Options dialog box, which allows you to change advanced settings for your printer. See “Advanced Options” later in this chapter.

Each of the following sections describe the options available with the EpsonScript driver.

The Page Setup dialog box also contains the Document option, which allows you to specify document parameters, such as the page margins, placement of footers and headers, control of widow lines, and how to treat hidden text. For a description of document parameters, see the user manual for your software.

Page Setup Parameters

When you select Page Setup in your software, you see a dialog box similar to the one shown below. The dialog box you see might be slightly different, depending on your software.



The options relevant to page setup are the following:

Paper

Specifies the size of the paper. This setting must match the size of the paper loaded in the printer. The paper sizes you can choose from can include the following (the actual listing will vary): A4, A5, Letter, Legal, HalfLetter, Executive, GovernmentLegal, GovernmentLetter, F4, Monarch, Commercial-10, DL, C5, A3, B4, Ledger. The default is either A4 or Letter, depending on your printer.

Orientation

Specifies whether the page is printed in portrait (default) or landscape orientation.

Reduce or Enlarge

Allows you to reduce or enlarge the page. You can enter a percentage from 25% to 400%. (The default is 100%.)

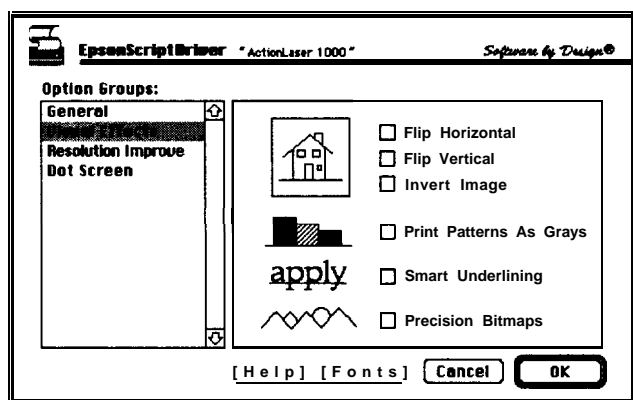
Layout

Allows you to print two or more pages of your document onto one sheet of paper. Each page is reduced so the number of pages you specify can appear on one sheet. For example, if you specify 4-UP, four pages are printed on one sheet. The options are 1-up (default), 2-up, 4-up, 6-up, 8-up, 12-up, or 16-up.

Your Page Setup dialog box might have additional options. See your software program manual for more information.

Advanced Options

When you click Options in the Page Setup or Print menu, you see a dialog box similar to the following:



The menus available in the Options dialog box - General, Visual Effects, Resolution Improve, Dot Screen, Printing Resolution, and Error Sheet (the listing varies depending on your printer) - are described in the following sections.

General

Banner Page

For each print job, specifies whether to print a banner sheet that identifies the user and gives the date and time the job was printed. The banner options are None (default), First, or Last. None specifies that no banner page is printed, First specifies the banner page is the first page that prints, and Last specifies that the banner page is the last page that prints.

Encoding

Enables you to save a document as a PostScript file. The options are Binary (default) or ASCII. Use Binary (default) to reduce the quantity of data; use ASCII if you plan to later edit the document.

Date/Time Stamp

Specifies whether the printing date and time are displayed on each page that prints. By default, Date/Time Stamp is not on.

Visual Effects

Flip Horizontal/Flip Vertical

These check boxes allow you to flip the printed image on the page.

Invert Image

This check box allows you to invert the image or text on the page so that black areas of the page become white and white areas become black.

Print Patterns as Gray (/As Colors)

This check box allows you to send bitmap patterns to the printer as grayscale or colors so the printer can print them using its own grayscale patterns. The As Colors item appears only if you have a PPD file for a color printer.

Some bitmap graphic images simulate grayscale or color by using black and white patterns to represent shades of gray or color. However, if the printer does not recognize the patterns as representing grayscale or color, it will print the pattern and not convert it to grayscale or color.

Smart Underlining

When selected, this item breaks underlining around the descenders in your document. By default, underlining crosses the descenders. You can confirm the setting by viewing the sample graphic in the dialog box.

Precision Bitmaps

When the Precision Bitmap check box is selected, images are printed at a multiple of 75 dpi.

Images are displayed on Macintosh computers at 72 dpi; however, most EpsonScript and PostScript printers print images in multiples of 75 dpi. During the transformation of 72-dpi screen data to print data, some image quality might be lost. If you select Precision Bitmaps, the screen data is converted to a multiple of 75 and then printed, preserving the quality of the image, though reducing the size of the image by approximately 4%.

Note:

For the options below, Printer's Default uses the setting made in SelectType.

Resolution Improve

Resolution Improve allows you to specify the printer's RITech setting. Normally you should not have to change this setting because the default provides the optimum setting in most cases. The options are Printer's Default (the default), Off, Light, Medium, or Heavy. See your printer manual for more information about RITech.

Note:

RITech is supported on certain EPSON printers only. This setting does not affect other printers that have a similar feature.

Dot Screen

Dot Screen allows you to change the grayscale technology used by the printer to create images. The options are Printer's Default (the default), Standard, and MultiGray. (MultiGray is not supported on all printers.)

If your printer supports MultiGray, choose this option. Standard sets the printer's grayscale handling to be the same as the default PostScript feature.

Printing Resolution

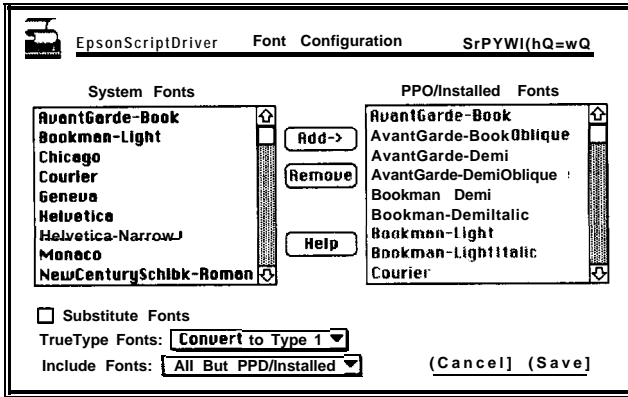
Printing Resolution sets the printing resolution. The options are Printer's Default (the default), 300 dpi, or 600 dpi.

Error Sheet

Error Sheet sets whether the printer prints out an error sheet when an error occurs. The options are Printer's Default (the default), ON, or OFF.

Fonts Menu Options

When you select the Fonts button from the Page Setup or Print menu, you see the following dialog box:



The Fonts options allow you to control the font environment for your printer.

Note:

You should be familiar with font management on a Macintosh computer before you attempt to change font settings.

System Fonts

Displays a list of available fonts that can be added to the PPD/Installed Fonts list.

PPD/Installed Fonts

Displays the fonts found in the PPD file and those added from the System Fonts list to be saved in the PPD file.

Substitute Fonts

When selected, Substitute Fonts substitutes screen fonts with similar printer fonts, making it unnecessary to download fonts. This allows you to print faster. Be aware that if the substituted font is very different from the screen fonts, the final printed output might look much different than it does on screen.

TrueType Fonts

This pop-up menu allows you to specify one of two options: Convert to Type 1 and Keep as TrueType.

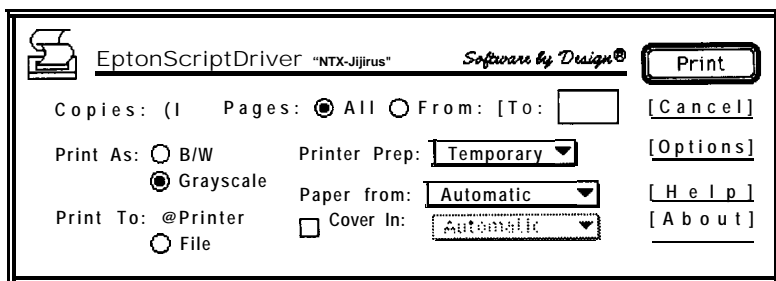
Include Fonts

This pop-up menu gives you the following options: All But PPD/Installed (default), None, All, All But Standard 13, and All But Standard 35.

To exit the Fonts menu, click Save or Cancel. If you click Save, any changes you made are saved. If you press Cancel, any changes you made are canceled and the settings are returned to the values that were specified before you entered the dialog box.

Print Menu Options

When you are ready to print a document, select Print in the File menu. This brings up the following dialog box:



Note:

*The **Options**, **Help**, and **About** options are the same as those for Page Setup. See previous sections.*

Copies

Specifies how many copies of the document to print. Enter a number from 1 (default) to 999.

Pages (From, To)

Specifies a range of pages to print. The available numbers are 1 to 9999. The default is for all pages to be printed.

Print As

Specifies one of the following options: B/W, Color (if available on your printer), Grayscale (if available on your printer).

B/W prints a document in black and white, even if the image on screen is in color.

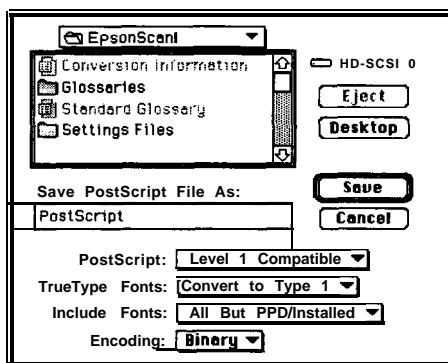
Grayscale prints the image by simulating shades of gray, even if the image on screen is in color. This option appears if the printer's PPD file supports grayscale printing.

Color prints the image using color. This option appears only if your printer supports color printing.

Print To

Allows you to specify whether the document is printed or saved to a file.

If you select File, the following dialog box appears:



PostScript allows you to specify Level 1 Compatible or Level 2 Only.

The TrueType Fonts pop-up menu allows you to specify one of two options: Convert to Type 1 and Keep as TrueType.

The Include Fonts pop-up menu gives you the following options: All But PPD/Installed (default), None, All, All But Standard 13, and All But Standard 35.

The Encoding option enables you to save a PostScript document as Binary (default) or ASCII. Use Binary (default) to reduce the quantity of data; use ASCII if you plan to later edit the document.

Printer Prep

The Printer Prep pop-up allows you to choose Temporary (default), None, Permanent, and Interrogate.

Permanent saves the prepared settings so that the driver does not perform the preparation for the next printing.

Temporary does not save the prepared settings. The driver must re-prepare the settings for the next print job.

Interrogate specifies that the printer driver query the printer whether preparation is needed. Preparation is done only if the printer specifies that it be done. The prepared settings are lost after printing.

When None is selected, the driver assumes that the printer is already prepared.

If you are using AppleTalk, the recommended setting is Permanent for the first job and None for all following print jobs.

If not all users are using the EpsonScript driver, set this option to Permanent; do not select Interrogate.

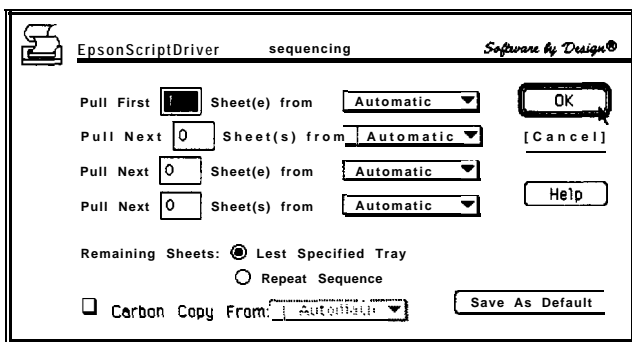
Paper From

Selects the paper source from one of the following: Automatic (default), Custom, Use SelectType's PAGESIZE, Standard Bin, Optional Lower Cassette, and Manual Feed. The actual option you see depends on your printer.

Automatic uses the paper source that is selected in the Page Setup dialog box.

Custom allows you to use up to four paper sources and to set the number of pages for each paper source.

When Custom is selected, the following dialog box appears.



Set the number of pages and paper sources. When the number of pages is larger than the sum of the numbers, set Remaining Sheets.

If you need to print one copy of all sheets from a different paper source, check Carbon Copy From and select the paper source.

Click Save As Default to save the current settings. Click OK to set and exit the dialog box.

Cover In

When selected, Cover In allows you to print the cover sheet of a document from a specific paper source. The pages following the cover sheet are loaded from the paper source specified in the Paper From menu. Except for Custom, Cover In has the same options as those for Paper From.

Chapter 5

EpsonScript SelecType Settings

Changes to SelecType	5-2
EPL-5000/5200 and ActionLaser 1000/1500	5-2
Level 1 changes	5-2
Level 2 changes	5-5
Status and error messages	5-5
EPL-5600 and ActionLaser 1600	5-7
PS MENU	5-7
TEST MENU	5-8

Changes to SelecType

When you install the EpsonScript option, the SelecType settings are slightly changed. Some settings are added to allow you to change settings specific to the EpsonScript option. Other settings, which are available for the built-in emulation modes, might not be applicable for EpsonScript and are not selectable in EpsonScript mode. Also additional status and error messages can appear when you use EpsonScript.

This chapter describes how SelecType is different for EpsonScript mode. See the section appropriate for your printer type.

Note:

Not all menu items listed in this chapter are available on all printers.

EPL-5000/5200 and ActionLaser 1000/1500

When using EpsonScript, there are minor changes to both SelecType Level 1 and Level 2 as well as additional status and error messages.

Level 1 changes

When you use EpsonScript, the Level 1 menu is changed as follows:

- ☐ The ORIENT, FONT, and SUB CONFIG items are not accessible.
- ☐ Two new Level 1 menu items are available: RECOVER JAM and ERR SHEET. These items are discussed below.
- ☐ The SYSTEM CONFIG menu has some new items added and some other items deleted.

New Level 1 items

RECOVER JAM	ON (default), OFF
--------------------	--------------------------

Determines whether a page is reprinted after a paper jam is cleared. If ON is selected and a paper jam occurs, the page is reprinted after the jam is cleared. If RECOVER JAM is OFF, the jammed page is not automatically reprinted. Turning off RECOVER JAM can sometimes speed the printing of complex pages.

ERR SHEET	ON, OFF (default)
------------------	--------------------------

Specifies whether the printer prints an EpsonScript error message when an error occurs. If ERR SHEET is OFF, the error message is displayed in the control panel but is not printed. If ERR SHEET is ON, an error sheet is printed when the error occurs. This feature can be convenient for programmers using a non-bidirectional parallel interface.

New SYSTEM CONFIG menu

The SYSTEM CONFIG menu has been modified as follows:

- ☐ The FULL PRINT, MEMORY LEFT, LOAD MACRO, SAVE MACRO, DELETE MACRO, and PowerOn MACRO items have been deleted.
- ☐ The PRINT MODE, MULTI GRAY, SAVE LEVEL 1, and RESET LEVEL 1 items have been added. These items are described below.

PRINT MODE**BAND (default), PAGE**

Specifies whether the printer uses the banding mode or page protect mode.

Banding mode (BAND), which is the default, is designed to use the printer's memory as effectively as possible. If a printer error occurs when using this mode, you need to expand your printer's memory, simplify the page you're printing, or change the setting to PAGE. Most documents are printed faster in banding mode than in page protect mode.

Page protect (PAGE) mode uses data from the computer to create the entire virtual page in the printer's memory before printing. This allows you to print some documents that require more memory than is allowed in banding mode. However, page protect mode requires more memory and it may take longer to print in page protect mode.

Note:

Page protect mode usually requires at least 2 MB. (The actual memory requirements depend on the page size.) If your printer has less than 2 MB, BAND is automatically selected, even if you manually select PAGE.

MULTI GRAY**ON (default), OFF**

Turns the Multi Gray feature on and off. This feature enhances grayscale printing if your software program supports halftone images. If you want to print your documents using standard PostScript grayscale, turn MULTI GRAY off.

Note:

In order to turn on the MULTI GRAY option, your software must support halftones.

SAVE LEVEL 1

Saves the current Level 1 settings. To save settings, select SAVE LEVEL 1 and then press ►.

If you changed any SelecType settings, SAVE LEVEL 1 erases the previous settings to save the new ones.

RES LEVEL 1

Resets all SelecType Level items to their default settings. To reset SelecType settings, select RES LEVEL 1 and then press ►.

Using RES LEVEL 1 erases any SelecType settings that you have changed from the default.

Level 2 changes

The only change to SelecType Level 2 is that the EMULATION menu now allows you to select EpsonScript mode (SCRIPT2) or one of the multiple emulation modes (such as PS&LQ).

Status and error messages

The status messages and error message described in this section can be displayed when you use EpsonScript. For descriptions of the status and error messages that are not specific to EpsonScript, see your printer manual.

BUSY : x SCRIPT2

This status message appears when the printer is processing data in EpsonScript emulation mode.

INIT : x SCRIPT2

This status message appears when the printer is initializing the EpsonScript emulation mode.

SERVICE REQ. POxxx

This error message, which rarely occurs, appears when the printer cannot continue developing the print data. If this message is displayed, reset your printer as described in your printer manual.

Notes:

- ❑ *If the SET FULL PRINT error message is displayed, change the PRINT MODE setting in SelecType Level 1 from BAND to PAGE. If the page still does not print, the print job is too complex to print with your printer's current memory. Try simplifying the page by reducing the number and size of fonts or graphics or add more memory.*
- ❑ *If your printer prints VM error on the error sheet, you should increase your printer's memory. The VM error occurs when you do not have enough memory to print the data.*

EPL-5600 and ActionLaser 1600

When EpsonScript emulation is selected, the PS MENU is accessible in SelecType and new items are added to the TEST MENU. All other menus and status and error messages are the same as for the built-in emulations; see your printer manual for more information.

Note:

Using page protect mode and 600 dpi resolution requires at least 6 MB. If your printer does not have enough memory, the printer switches the resolution to 300 dpi or turns page protect off.

PS MENU

The PS MENU contains the following three items that allow you to change EpsonScript parameters.

ERR SHEET	ON, OFF (default)
------------------	--------------------------

Specifies whether the printer prints an EpsonScript error message when an error occurs. If ERR SHEET is OFF, the error message is displayed on the printer's control panel but is not printed. If ERR SHEET is ON, an error sheet is printed when the error occurs. This feature can be convenient for programmers using a non-bidirectional parallel interface.

MicroGray	ON (default), OFF
------------------	--------------------------

Enables your printer to increase the grayscale quality to approximate 1,200 dpi. If your software program supports halftones, its graphic output becomes smoother than the normal PostScript setting. If you want to print your documents using standard PostScript grayscale, turn MicroGray off.

MicroGray is not available in 300-dpi mode; you can, however, use the Multi Gray feature when in 300-dpi mode.

PROTECT LEVEL 1 (default) - 5

Allows you to increase the amount of memory allocated for page protection. If the SelectType item PAGE PROTECT is off, an overrun error might occur if there is not enough memory to print a page. If this error occurs, raise the protect level. If the error occurs after raising the level to 5, set PAGE PROTECT to PAGE, LT, LGL, or A4.

TEST MENU

The TEST MENU now contains three new items that allow you to print test pages specific to the EpsonScript emulation. To print a test page, select the item in the TEST MENU and then press the Enter button. If you need more information, see your printer manual.

PS STATUS SHEET

Prints a status sheet describing the current EpsonScript settings.

PS FONT SHEET SAMPLE

Prints a sample of the fonts available in EpsonScript emulation.

PS FACT SHEET

Prints a fact sheet that illustrates the features available for EpsonScript emulation.

Appendix A

Specifications

Emulation

EpsonScript level 2:

Printing output is equivalent to
Adobe PostScript level 2

Note:

Refer to the PostScript Reference Manual, Second Edition (published by the Addison Wesley Publishing Company, Inc.), for details on PostScript Language specifications.

Environmental

Operating temperature:

0° to 50°C (32° to 122°F)

Storage temperature:

-20° to 60°C (-4° to 140°F)

Operating humidity:

5% to 85% without condensation

Storage humidity:

5% to 90% without condensation

Mechanical

Connector:

C83202*

268D-125B-2212 or equivalent

C83209*

DHB-RB120-S131NB (DDK) or
equivalent

Dimensions:

C83202*

Height 20.4 mm

Width 90.0 mm
(95.7 mm maximum)

Depth 141.0 mm

C83209*

Height 20.9 mm

Width 57.0 mm

Depth 102.0 mm

Regulatory approvals

Safety standards:

UL 1950 with D3, CSA 22.2 #220

R.F.I:

FCC part 15 Subpart B class B,
CSA c108.8 class B, FTZ (VDE
0871 class B, 0875 part 1), CISPR
Pub 22

Emulation name

in PJL

POSTSCRIPT

in EIJ

(C83202*)
SCRPT2

(C83209*)
PS

AppleTalk protocol

Device name



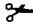


























LaserWriter

Emulation type

POSTSCRIPT-00

Appendix B

Character Tables

	Courier	Zapf	Dingbats	Symbol
SP				
!				
"	"			∇
#	#			#
\$	\$			3
%	%			%
&	&			&
((	3
))			(
*	*		)
+	+			*
,	,			+
.	.			,
/	/			/
0	0			0
1	1			1
2	2			2
3	3			3
4	4			4
5	5			5
6	6			6
7	7			7
8	8			8
9	9			9
:	:			:
;	;			;
<	<			<
=	=			=
>	>			>
?	?			?

<i>Courier</i>	<i>Zapf Dingbats</i>	<i>Symbol</i>
@	Ⓐ	⌘
A	A	A
B	B	B
C	C	X
D	D	A
E	E	E
F	F	Φ
G	G	Γ
H	H	H
I	I	I
J	J	⊖
K	K	K
L	L	Λ
M	M	M
N	N	N
O	O	O
P	P	∩
Q	Q	⊖
R	R	P
S	S	Σ
T	T	T
U	U	Y
V	V	ς
W	W	Ω
X	X	⌘
Y	Y	Ψ
Z	Z	Z
[[[
\	\	..
!	!	
^	^	⌞
	—	—

	Courier	Zapf Dingbats	Symbol
160			
161	ı	♪	Υ
162	ç	•	
163	£	♥	≤
164	/	♥	/
165	≠	♥	∞
166	f	♣	f
167	\$	♣	♣
168	¤	♣	♦
169		♦	♥
170	”	♥	♠
171	«	♠	↔
172	‘	①	←
173	’	②	↑
174	fi	③	→
175	fl	④	↓
176		⑤	°
177		⑥	±
178	t	⑦	”
179	‡	⑧	≈
180	·	⑨	×
181		⑩	α
182	¶	①	∂
183	·	②	•
184	,	③	+
185	”	④	≠
186	”	⑤	■
187	»	⑥	
188	...	⑦	...
189	∞	⑧	↑
190		⑨	—
191	¿	⑩	↵

	<i>Courier</i>	<i>Zapf Dingbats</i>	<i>Symbol</i>
192		①	ℵ
193	.	②	ℶ
194	.	③	ℷ
195		④	ℸ
196		⑤	⊗
197	┌	⑥	⊕
198	┐	⑦	⊖
199		⑧	⊗
200	:	⑨	⊔
201		⑩	⊕
202	°	❶	⊖
203	˘	❷	⊗
204	˙	❸	⊕
205	˚	❹	⊖
206	◁	❺	⊕
207	◁	❻	⊖
208	└	❼	⊗
209		❽	⊕
210		❾	®
211		❿	©
212		➔	™
213		➡	∏
214		↔	√
215		↕	·
216		↙	└
217		➔	^
218		↘	√
219		➡	↔
220		➔	⇐
221		➡	⇑
222		➡	⇒
223		➡	⇓

	<i>Courier</i>	<i>Zapf Dingbats</i>	<i>Symbol</i>
224		➡	◇
225	Æ	➡	◁
226		↗	®
227	ä	↗	©
228		↗	™
229		➡	Σ
230		↶	⎵
231		➡	⎵
232	£	➡	⎵
233	Ø	↶	⎵
234	ƒ	↶	⎵
235	◊	↶	⎵
236		↶	⎵
237		↶	⎵
238		↶	⎵
239		↶	⎵
240			🍏
241	æ	↶	◁
242		↶	⎵
243		↶	⎵
244		↶	⎵
245	1	↶	⎵
246		↶	⎵
247		↶	⎵
248	ı	↶	⎵
249	o	↶	⎵
250	œ	↶	⎵
251	ß	↶	⎵
252		➡	⎵
253		➡	⎵
254		➡	⎵
255			

Index

B

Banding mode, Intro 1
Banner page, printing, 3-7

C

Commands,
 editing, 4-10
 sending to printer, 4-10
Cover In, 3-13
Customize installation, 2-2

D

Date/Time Stamp, 3-6
Dot Screen, 3-8
Downloading fonts, 4-4
 removing 4-4

E

Easy installation, 2-2
Encoding, 3-6
EpsonScript, Intro-1
 features, Intro-1
 fonts, Intro-2
 installing the driver, 2-2
 hardware installation, 1-2
 hardware requirements, Intro-3
 memory requirements, Intro-3
EpsonScript cartridge, Intro-1
 installing 1-2
 memory requirements, Intro-3
EpsonScript driver, 3-2
 installing 2-2
 selecting 2-6
EpsonScript emulation mode
 selecting 1-5

EpsonScript interface board, Intro-1
 installing 1-3
 memory requirements, Intro-3
EpsonScript Utility, 4-2
ERR SHEET, 5-3

F

Flip Horizontal/Flip Vertical, 3-6
Fonts, Intro-2
 converting TrueType fonts to Type 1, 3-9
 displaying a list of printer fonts, 4-4
 downloading, 4-4
 installing screen fonts, 2-4
 removing downloaded fonts, 4-6
Fonts option, 3-8

G

General option, 4-10

I

Include Fonts, 3-9
Intelligent Emulation Switch, Intro-2
Invert Image, 3-6

J

LocalTalk interface, Intro-3

M

Memory requirements
 Macintosh, Intro-4
 printer, Intro-4
MicroGray, Intro-2, 5-7
MultiGray, Intro-2, 5-4

O

Options menu, 3-5

P

Page protect mode, Intro-1, 5-4

Page Setup menu, 3-2 , 3-4

getting help, 3-3

Paper From, 3-13

PostScript

viewing level and version number,
4-7

printing PostScript files, 4-8

PPD/Installed Fonts, 3-9

Precision Bitmaps, 3-7

Print As, 3-10

Print menu, 3-2-3- 10-12

getting help, 3-3

PRINT MODE, 5-4

Print Patterns as Gray/Color, 3-6

Print To, 3-11

Printer

getting information, 4-7

renaming 4-9

resetting 4-11

sending commands, 4-10

Printer Prep, 3-11

Printer Is Silent checkbox, 4-3

PROTECT LEVEL, 5-7

PS FACT SHEET, 5-8

PS FONT SHEET, 5-8

PS STATUS SHEET, 5-8

R

RECOVER JAM, 5-3

Renaming the printer, 4-9

RES LEVEL 1 ,5-5

Resolution Improve, 3-7

Resetting the printer, 4-11

RI Tech, specifying setting, 3-7

S

SAVE LEVEL 1,5-5

SelectType, changes to, 5-2

Shared Printer Language, Intro-2

Smart Underlining, 3-7

Startup page, **4-11**

Substitute Fonts, 3-9

System Fonts, 3-9

T

TEST MENU, 5-8

TrueType Fonts option, 3-9

TrueType fonts

converting to Type 1 fonts, 3-9

U

Update List, 4-3

EPSON OVERSEAS MARKETING LOCATIONS

EPSON AMERICA, INC.

20770 Madrona Ave.
P.O. Box 2842
Torrance, CA 90509.2842
Phone: (800) 922-8911
Fax: (310) 782.5220

EPSON UK LTD.

Campus 100, Maylands Avenue,
Hemel Hempstead, Herts,
HP2 7TJ. U.K.
Phone: 0442-61144
Telex: 5 182467

EPSON DEUTSCHLAND GmbH

Zülpicher Straße 6,
40549 Düsseldorf Germany
Phone: (02 11) 56030
Telex: 8584786

EPSON FRANCE S.A.

68 bis, rue Marjolin
92300, Levallois-Perret, France
Phone: (1) 4087-3737
Telex: 610657

EPSON AUSTRALIA PTY. LTD.

1/70 Gibbes Street, Chatswood 2067 NSW.
Phone: 2-4 15-9000
Fax: 2-4 17-0077

EPSON SINGAPORE PTE. LTD.

No. 1 Raffles Place #26-00
OUB Centre, Singapore 0 104
Phone: 5330477
Fax: 5338 119

EPSON HONG KONG LTD.

Rooms 4706-10, 47/F,
China Resources Bldg.,
26 Harbour Road, Wanchai, Hong Kong
Phone: 5854300
Fax: 8277083

**EPSON ELECTRONICS TRADING LTD.
(TAIWAN BRANCH)**

10F. No. 287 Nanking E. Road, Sec. 3,
Taipei, Taiwan, R.O.C.
Phone: (02) 7 17-7360
Fax: (02) 7 12-9 164

EPSON ITALIA S.p.A.

V.le F.lli Casiraghi 427
20099 Sesto S.Giovanni
MI, Italy
Phone: 2-262331
Fax: 2-2440750

EPSON IBERICA S.A.

Av. de Roma, 18-26
08290 Cerdanyola del Valles
Barcelona, Spain
Phone: 582.15.00
Fax: 582.15.55

**SEIKO EPSON CORPORATION
(Hirooka Office)**

80 Harashinden, Hirooka
Shiojiri-shi, Nagano-ken
399-07 Japan
Phone: (0263) 52.2552

EPSON