

ACCESSORIES



IN THIS CHAPTER...

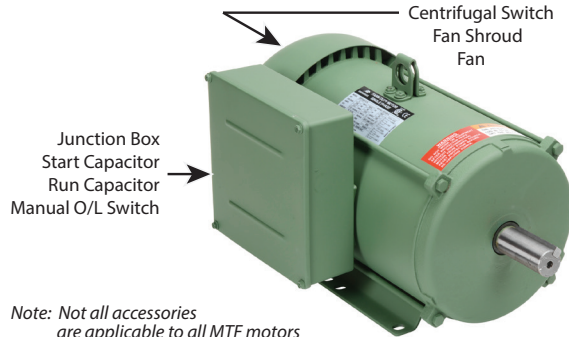
<i>Replacement Parts</i>	4-2
<i>Capacitors and Centrifugal Switches for IronHorse® Single-Phase Motors</i>	4-2
<i>Spare/Replacement Parts for MTF Single-Phase Farm-Duty Motors</i>	4-2
<i>Spare/Replacement Parts for MTR(2) Single-Phase Motors</i>	4-3
<i>Spare/Replacement Parts for MTR/MTRP Three-Phase Motors</i>	4-4
<i>Spare/Replacement Parts for MTCP Premium-Efficiency Three-Phase Motors</i>	4-5
<i>Spare/Replacement Parts for MTSS Stainless-Steel Three-Phase Motors</i>	4-6
<i>C-Flange Kits</i>	4-7
<i>C-Flange Kits for MTCP Premium-Efficiency Three-Phase Motors</i>	4-7
<i>C-Flange Kits for MTC EPC Act Three-Phase Motors</i>	4-8
<i>STABLE™ Slide Bases</i>	4-10
<i>Slide Base Selection</i>	4-11
<i>Slide Base Dimensions</i>	4-12

REPLACEMENT PARTS

CAPACITORS AND CENTRIFUGAL SWITCHES FOR IRONHORSE® SINGLE-PHASE MOTORS

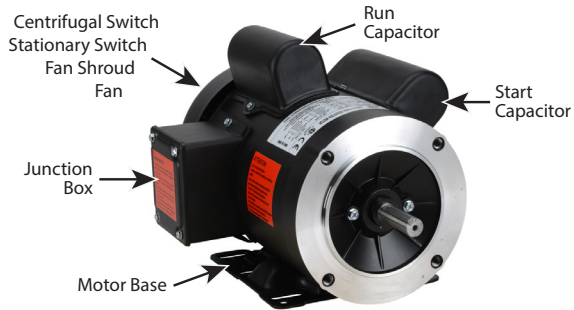
Single phase motors use capacitors to provide starting torque when power is first applied to the motor. When the motor begins to turn, the start capacitor is no longer need and is taken out of the circuit by a centrifugal switch. In addition to the start capacitor, 1-1/2 hp and larger IronHorse single-phase motors have run capacitors to allow the motor to develop higher running torque and greater efficiency. Run capacitors also help improve the motor power factor.

MTF ACCESSORY LOCATIONS



Note: Not all accessories are applicable to all MTF motors

MTR & MTR2 ACCESSORY LOCATIONS



Note: Not all accessories are applicable to all MTR and MTR2 motors

SPARE/REPLACEMENT PARTS FOR MTF SINGLE-PHASE FARM-DUTY MOTORS

MTF Single-Phase Motor Spare/Replacement Parts *						
Part Number	Accessory Type	Capacitance (µF)	Rated Voltage	Dimension Height x Ø (in[mm])	Applicable Motor Number	Motor HP
MTA-CAP-16	start capacitor	200	300	3.39 x 1.81 [86.1 x 46.0]	MTF-002-1C18-182	2
MTA-CAP-17		300		3.39 x 1.81 [86.1 x 46.0]	MTF-003-1C18	3
MTA-CAP-18		500		4.33 x 1.97 [110.0 x 50.0]	MTF-005-1C18	5
MTA-CAP-19	run capacitor	35	450	3.96 x 1.77 [100.6 x 45.0]	MTF-002-1C18-182	2
MTA-CAP-20		40		3.96 x 1.97 [100.6 x 50.0]	MTF-003-1C18	3
MTA-CAP-21		50		4.17 x 1.97 [106.0 x 50.0]	MTF-005-1C18	5
MTA-CSW-05	centrifugal switch	n/a	250		MTF-002-1C18-182	2
MTA-CSW-06					MTF-003-1C18	3
MTA-CSW-07					MTF-005-1C18	5
MTA-MOL-1**	manual overload switch	n/a			MTF-002-1C18-182	2
MTA-MOL-2**					MTF-003-1C18	3
MTA-MOL-3**					MTF-005-1C18	5
MTAF-JBOX-180	junction box				MTF-xxx-1C18-xxx	all
MTAF-FAN-182	fan		n/a		MTF-002-1C18-182	2
MTAF-FAN-184					MTF-003-1C18	3
MTAF-FAN-184-2					MTF-005-1C18	5
MTAF-SHROUD-180					fan shroud	MTF-xxx-1C18-xxx

* These accessories are spare/replacement components only for IronHorse MTF series single-phase farm-duty motors.

** MTA-MOL-1 = JOEMEX TC4-0-E-1-44, V07-1; MTA-MOL-2 = JOEMEX TC4-0-E-1-44, V06-1; MTA-MOL-3 = JOEMEX TC4-0-E-1-40, V08-1

CAPACITORS AND CENTRIFUGAL SWITCHES FOR IRONHORSE SINGLE-PHASE MOTORS (CONTINUED)

SPARE/REPLACEMENT PARTS FOR MTR(2) SINGLE-PHASE MOTORS

MTR Single-Phase Motor Spare/Replacement Parts (NOT for MTR ₂ Motors)*						
Part Number	Accessory Type	Capacitance (μF)	Rated Voltage	Dimension Height x Ø (in[mm])	Applicable MTR Motor Number	MTR Motor HP ; RPM
MTA-CAP-01	start capacitor	200	165	3.15 x 1.65 [80.0 x 41.9]	MTR-P33-1AB18	1/3 ; 1800
MTA-CAP-02		250			MTR-P50-1AB18	1/2 ; 1800
MTA-CAP-03		300			MTR-P75-1AB18	3/4 ; 1800
MTA-CAP-04		250			MTR-001-1AB18	1 ; 1800
MTA-CAP-08		400			MTR-1P5-1AB18	1-1/2 ; 1800
MTA-CAP-06	run capacitor	40	450	4.02 x 1.75 [102.1 x 44.5]	MTR-1P5-1AB18	1-1/2 ; 1800
MTA-CAP-09		35		4.0 x 1.8 [101 x 45]	MTR-1P5-1AB36	1-1/2 ; 3600
MTA-CSW-01	centrifugal switch	n/a	250	n/a	MTR-xxx-1AB18	all 1800 rpm
MTA-CSW-02					MTR-1P5-1AB36	3600 rpm
MTAR-BASE-56	motor base	n/a	n/a	n/a	MTR-xxx-1ABxx	all
MTAR-FAN-56	fan					
MTAR-JBOX-56	junction box					
MTAR-SHROUD-56	fan shroud					

* These accessories are spare/replacement components only for MTR series IronHorse motors. Accessories for MTR series motors are NOT compatible with MTR₂ series motors.

MTR ₂ Single-Phase Motor Spare/Replacement Parts (NOT for MTR Motors)*							
Part Number	Accessory Type	Capacitance (μF)	Rated Voltage	Dimension Height x Ø (in [mm])	Applicable MTR ₂ Motor Number	MTR ₂ Motor HP ; RPM	
MTA-CAP-10	start capacitor	200	165	2.80 x 1.46 [71.1 x 37.1]	MTR ₂ -P33-1AB36	1/3 ; 3600	
MTA-CAP-11	start capacitor	300		3.39 x 1.85 [86.1 x 47.0]	MTR ₂ -P50-1AB36	1/2 ; 3600	
MTA-CAP-12	start capacitor	400			MTR ₂ -P75-1AB36	3/4 ; 3600	
MTA-CAP-13	start capacitor	500			MTR ₂ -001-1AB36	1 ; 3600	
MTA-CAP-14	run capacitor	40	250	3.38 x 1.81 [85.9 x 46.0]	MTR ₂ -1P5-1ABxx MTR ₂ -002-1ABxx	1-1/2 ; 1800	
MTA-CAP-15	start capacitor	800	165	4.41 x 1.85 [112.0 x 47.0]		2 ; 1800 2 ; 3600	
MTA-CSW-03	centrifugal switch	n/a	125	n/a	MTR ₂ -xxx-1AB36	all 3600 rpm	
MTA-CSW-04	stationary switch				MTR ₂ -xxx-1ABxx	all	
MTA-CSW-08	centrifugal switch				MTR ₂ -xxx-1AB18	all 1800 rpm	
MTA ₂ -BASE-56	motor base		n/a		n/a	MTR ₂ -xxx-1ABxx	all
MTA ₂ -FAN-56	fan						
MTA ₂ -JBOX-56	junction box						
MTA ₂ -SHROUD-56	fan shroud						

* These accessories are spare/replacement components only for MTR₂ series IronHorse motors. Accessories for MTR₂ series motors are NOT compatible with MTR series motors.

SPARE/REPLACEMENT PARTS FOR MTR/MTRP THREE-PHASE MOTORS

IronHorse bases, fans, and fan shrouds are available as direct replacement parts for MTRP motors.

These parts are field installable, and include installation instructions.



Fan



Fan Shroud



Junction Box



Motor Base



Fan

MTR Series Three-Phase Motor Spare/Replacement Parts*			
Part Number	Description	Applicable MTR Motor Number	MTR Motor HP : RPM
MTAR-BASE-56	motor base	MTR-xxx-xBDxx	all
MTAR-FAN-56	fan		
MTAR-JBOX-56	junction box		
MTAR-SHROUD-56	fan shroud		
* These accessories are spare/replacement components only for MTR series IronHorse motors.			

MTRP Series Three-Phase Motor Spare/Replacement Part*			
Part Number	Description	Applicable MTRP Motor Number	MTRP Motor HP : RPM
MTA2-BASE-56	motor base	MTRP-xxx-3BDxx	all
MTA2-FAN-56-1	fan		
MTA2-JBOX-56	junction box		
MTA2-SHROUD-56	fan shroud		
* These accessories are spare/replacement components only for MTRP series IronHorse motors.			

SPARE/REPLACEMENT PARTS FOR MTCP PREMIUM-EFFICIENCY THREE-PHASE MOTORS

IronHorse junction boxes, TEFC fans, and TEFC fan shrouds are available as direct replacement parts for MTCP motors.

These parts are field installable, and include installation instructions.



MTCP Premium-Efficiency Three-Phase Motor Replacement Parts					
Part Number (1)	Description (2)(3)(4)	Fits Frame	Fits PE Motor Number (1)	Motor HP	Product Weight (lb)
MTAP-FAN-140	Replacement Fan	143 & 145	MTCP-001-3BD12	1	0.3
MTAP-SHROUD-140	Replacement Fan Shroud		MTCP-001-3BD18(C)	1	1.1
MTAP-JBOX-140	Replacement Junction Box		MTCP-1P5-3BD18(C)	1-1/2	
			MTCP-1P5-3BD36	1-1/2	
			MTCP-002-3BD18(C)	2	2.6
			MTCP-002-3BD36	2	
MTAP-FAN-180	Replacement Fan	182 & 184	MTCP-1P5-3BD12	1-1/2	0.3
MTAP-SHROUD-180	Replacement Fan Shroud		MTCP-002-3BD12	2	1.5
MTAP-JBOX-180	Replacement Junction Box		MTCP-003-3BD18(C)	3	
			MTCP-003-3BD36	3	
			MTCP-005-3BD18(C)	5	3.1
			MTCP-005-3BD36	5	
MTAP-FAN-210-2	Replacement Fan (for 2-pole motors)	213 & 215	MTCP-7P5-3BD36	7-1/2	0.3
			MTCP-010-3BD36	10	
MTAP-FAN-210	Replacement Fan (4&6-pole)		MTCP-003-3BD12	3	0.3
MTAP-SHROUD-210	Replacement Fan Shroud		MTCP-005-3BD12	5	2.3
MTAP-JBOX-210	Replacement Junction Box	MTCP-7P5-3BD18(C)	7-1/2	3.4	
		MTCP-010-3BD18(C)	10		

1) These MTAP replacement components fit only MTCP Premium-Efficiency motors; they will NOT fit MTC EPAct motors.
 2) Replacement Fans include fan, snap ring, and instructions.
 3) Replacement Fan Shrouds include shroud, bolts w/washers, rubber plug, and instructions.
 4) Replacement Junction Boxes include gasketed base & cover assembly, base gasket, base bolts, and instructions.


*** TABLE CONTINUED NEXT PAGE ***

SPARE/REPLACEMENT PARTS FOR MTCP PREMIUM-EFFICIENCY 3-PHASE MOTORS (CONTINUED)

*** TABLE CONTINUED FROM PREVIOUS PAGE ***

MTCP Premium-Efficiency Three-Phase Motor Replacement Parts					
Part Number (1)	Description (2)(3)(4)	Fits Frame	Fits PE Motor Number (1)	Motor HP	Product Weight (lb)
MTAP-FAN-250-2	Replacement Fan (for 2-pole motors)	254 & 256	MTCP-015-3BD36 MTCP-020-3BD36	15 20	0.3
MTAP-FAN-250	Replacement Fan (4&6-pole)		MTCP-7P5-3BD12	7-1/2	0.3
MTAP-SHROUD-250	Replacement Fan Shroud	284 & 286	MTCP-010-3BD12	10	4.5
MTAP-JBOX-250	Replacement Junction Box		MTCP-015-3BD18(C) MTCP-020-3BD18(C)	15 20	7.0
MTAP-FAN-280	Replacement Fan	284 & 286	MTCP-015-3BD12	15	0.5
MTAP-SHROUD-280	Replacement Fan Shroud		MTCP-020-3BD12	20	6.5
MTAP-JBOX-280	Replacement Junction Box	324 & 326	MTCP-025-3BD18(C) MTCP-030-3BD18(C)	25 30	7.0
MTAP-FAN-320	Replacement Fan		MTCP-040-3BD18(C) MTCP-050-3BD18(C)	40 50	0.6 8.3
MTAP-SHROUD-320	Replacement Fan Shroud	364 & 365	MTCP-060-3BD18(C) MTCP-075-3BD18(C)	60 75	22.3
MTAP-JBOX-320	Replacement Junction Box				0.6
MTAP-FAN-360	Replacement Fan	405	MTCP-100-3BD18(C)	100	9.0
MTAP-SHROUD-360	Replacement Fan Shroud				15.8
MTAP-JBOX-360	Replacement Junction Box	444 & 445	MTCP-125-3BD18 MTCP-150-3BD18	125 150	22.3
MTAP-FAN-400	Replacement Fan				1.1
MTAP-SHROUD-400	Replacement Fan Shroud	444 & 447	MTCP-200-3BD18	200	30.0
MTAP-JBOX-400	Replacement Junction Box				2.0
MTAP-FAN-440	Replacement Fan	445 & 447	MTCP-150-3BD18 MTCP-200-3BD18	150 200	17.5
MTAP-SHROUD-440	Replacement Fan Shroud				40.0
MTAP-JBOX-440	Replacement Junction Box	<p>1) These MTAP replacement components fit only MTCP Premium-Efficiency motors; they will NOT fit MTC EPAct motors.</p> <p>2) Replacement Fans include fan, snap ring, and instructions.</p> <p>3) Replacement Fan Shrouds include shroud, bolts w/washers, rubber plug, and instructions.</p> <p>4) Replacement Junction Boxes include gasketed base & cover assembly, base gasket, base bolts, and instructions.</p>			

SPARE/REPLACEMENT PARTS FOR MTSS STAINLESS-STEEL THREE-PHASE MOTORS

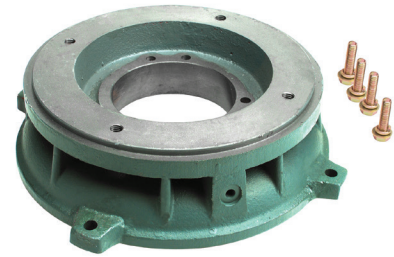
MTSS Stainless-Steel Three-Phase Motor Replacement Parts		
Part Number	Description	Picture
MTAS-CG-M22	<p>Cable gland; M22 x 1.5 mm thread; (1) silicone rubber gasket accommodates a cable diameter range of 0.393 to 0.512 in (10 to 13 mm); IP66 protection level; nickel-plated brass housing.</p> <p>This is a SPARE part for IronHorse MTSS motors – one cable gland is pre-installed on each MTSS motor.</p>	

C-FLANGE KITS

C-FLANGE KITS FOR MTCP PREMIUM-EFFICIENCY THREE-PHASE MOTORS

C-FLANGE KITS

Any IronHorse MTCP Premium-Efficiency T-frame cast-iron motor from 1–200hp can be converted to C-face mounting by using a cast iron C-flange kit. These kits are field installable and include the C-faces and mounting bolts.



MTAP T-Frame C-Flange Kit

C-FLANGE DIMENSIONS

C-flange dimensions are shown in Chapter 2 (Mounting & Initial Startup) along with TC-frame motor dimensions.



AUTHORIZED EASA SERVICE CENTERS ARE EQUIPPED WITH THE NECESSARY EQUIPMENT TO QUICKLY AND INEXPENSIVELY INSTALL C-FACE KITS. VISIT THE EASA WEBSITE AT WWW.EASA.COM TO FIND THE NEAREST AUTHORIZED SERVICE CENTER.

MTCP Premium-Efficiency T-frame Three-Phase Motor C-Flange Kits				
Part Number (1)	Fits Frame	Fits Motor (1)	Motor HP	Product Weight (lb)
MTAP-CFACE-140TC	143T & 145T	MTCP-001-3BD12	1	6.8
		MTCP-001-3BD18	1	
		MTCP-1P5-3BD18	1-1/2	
		MTCP-1P5-3BD36	1-1/2	
		MTCP-002-3BD18	2	
		MTCP-002-3BD36	2	
MTAP-CFACE-180TC	182T & 184T	MTCP-1P5-3BD12	1-1/2	14.3
		MTCP-002-3BD12	2	
		MTCP-003-3BD18	3	
		MTCP-003-3BD36	3	
		MTCP-005-3BD18	5	
		MTCP-005-3BD36	5	
MTAP-CFACE-210TC	213T & 215T	MTCP-003-3BD12	3	13.8
		MTCP-005-3BD12	5	
		MTCP-7P5-3BD18	7-1/2	
		MTCP-7P5-3BD36	7-1/2	
		MTCP-010-3BD18	10	
		MTCP-010-3BD36	10	
MTAP-CFACE-250TC	254T & 256T	MTCP-7P5-3BD12	7-1/2	40.1
		MTCP-010-3BD12	10	
		MTCP-015-3BD18	15	
		MTCP-015-3BD36	15	
		MTCP-020-3BD18	20	
		MTCP-020-3BD36	20	
1) MTAP-CFACE C-flange kits will NOT fit MTC EPMotors.				
*** TABLE CONTINUED NEXT PAGE ***				

C-FLANGE KITS FOR MTCP PREMIUM-EFFICIENCY THREE-PHASE MOTORS (CONTINUED)

*** TABLE CONTINUED FROM PREVIOUS PAGE ***

MTCP Premium-Efficiency T-frame Three-Phase Motor C-Flange Kits				
<i>Part Number (1)</i>	<i>Fits Frame</i>	<i>Fits Motor (1)</i>	<i>Motor HP</i>	<i>Product Weight (lb)</i>
MTAP-CFACE-280TC	284T & 286T	MTCP-015-3BD12 MTCP-020-3BD12 MTCP-025-3BD18 MTCP-030-3BD18	15 20 25 30	44.0
MTAP-CFACE-320TC	324T & 326T	MTCP-040-3BD18 MTCP-050-3BD18	40 50	61.7
MTAP-CFACE-360TC	364T & 365T	MTCP-060-3BD18 MTCP-075-3BD18	60 75	70.5
MTAP-CFACE-400TC	405T	MTCP-100-3BD18	100	136.6
MTAP-CFACE-444TC	444T & 445T	MTCP-125-3BD18 MTCP-150-3BD18	125 150	143.2
MTAP-CFACE-447TC	445/7T	MTCP-200-3BD18	200	144.4

1) MTAP-CFACE C-flange kits will NOT fit MTC EPAct motors.

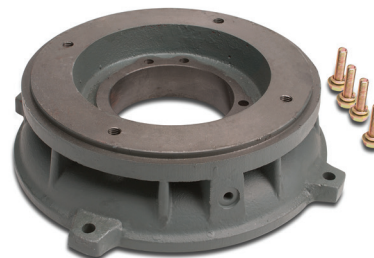
C-FLANGE KITS FOR MTC EPACT THREE-PHASE MOTORS

C-FLANGE KITS

Any IronHorse MTC EPAct T-frame cast-iron motor from 1–300hp can be converted to C-face mounting by using a cast iron C-flange kit. These kits are field installable and include the C-faces and mounting bolts.

C-FLANGE DIMENSIONS

C-flange dimensions are shown in Chapter 2 (Mounting & Initial Startup) along with TC-frame motor dimensions.



MTA T-Frame C-Flange Kit



AUTHORIZED EASA SERVICE CENTERS ARE EQUIPPED WITH THE NECESSARY EQUIPMENT TO QUICKLY AND INEXPENSIVELY INSTALL C-FACE KITS. VISIT THE EASA WEBSITE AT WWW.EASA.COM TO FIND THE NEAREST AUTHORIZED SERVICE CENTER.

C-FLANGE KITS FOR MTC EPACT THREE-PHASE MOTORS (CONTINUED)

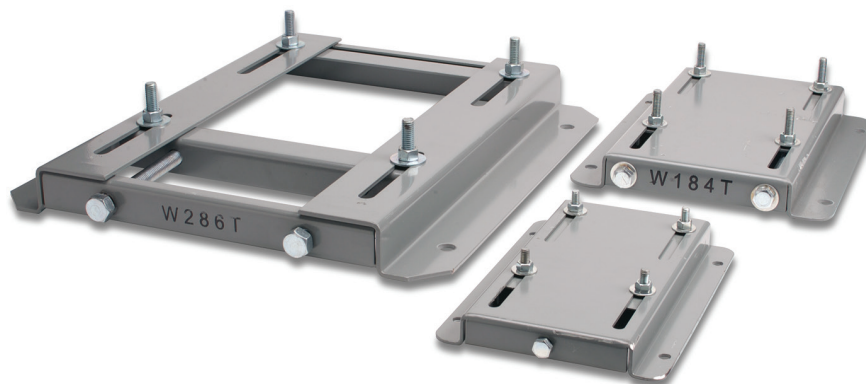
EPAct T-Frame Three-Phase Motor C-Flange Kits				
Part Number (1)	Fits Frame	Fits Motor (1)	Motor HP	Shipping Weight (lb)
MTA-CFACE-140TC	143T & 145T	MTC-001-3BD12 MTC-001-3BD18 MTC-1P5-3BD18 MTC-1P5-3BD36 MTC-002-3BD18 MTC-002-3BD36	1 1 1-1/2 1-1/2 2 2	6
MTA-CFACE-180TC	182T & 184T	MTC-1P5-3BD12 MTC-002-3BD12 MTC-003-3BD18 MTC-003-3BD36 MTC-003-3BD36 MTC-005-3BD36	1-1/2 2 3 3 5 5	12
MTA-CFACE-210TC	213T & 215T	MTC-003-3BD12 MTC-005-3BD12 MTC-7P5-3BD18 MTC-7P5-3BD36 MTC-010-3BD18 MTC-010-3BD36	3 5 7-1/2 7-1/2 10 10	12
MTA-CFACE-250TC	254T & 256T	MTC-7P5-3BD12 MTC-010-3BD12 MTC-015-3BD18 MTC-020-3BD18	7-1/2 10 15 20	24
MTA-CFACE-280TC	284T & 286T	MTC-25-3BD18 MTC-30-3BD18	25 30	30
MTA-CFACE-320TC	324T & 326T	MTC-40-3BD18 MTC-50-3BD18	40 50	48
MTA-CFACE-360TC	364T & 365T	MTC-60-3BD18 MTC-75-3BD18	60 75	50
MTA-CFACE-400TC	405T	MTC-100-3BD18	100	123
MTA-CFACE-444TC	444T & 445T	MTC-125-3BD18 MTC-150-3BD18	125 150	133
MTA-CFACE-447TC	445/7T	MTC-200-3BD18	200	133
MTA-CFACE-449TC	449T	MTC-250-3D18 MTC-300-3D18	250 300	147
1) MTA-CFACE C-flange kits will NOT fit MTCP Premium-Efficiency motors.				



AUTHORIZED EASA SERVICE CENTERS ARE EQUIPPED WITH THE NECESSARY EQUIPMENT TO QUICKLY AND INEXPENSIVELY INSTALL C-FACE KITS. VISIT THE EASA WEBSITE AT WWW.EASA.COM TO FIND THE NEAREST AUTHORIZED SERVICE CENTER.

STABLE™ SLIDE BASES

AutomationDirect offers STABLE AC motor slide bases for mounting most AC motor brands with frame sizes from 56 to 449. These heavy duty steel bases are primed with an oven-baked primer ready for painting. The motor mounting bolts are welded to the exact motor foot pattern to prevent the bolts from spinning.

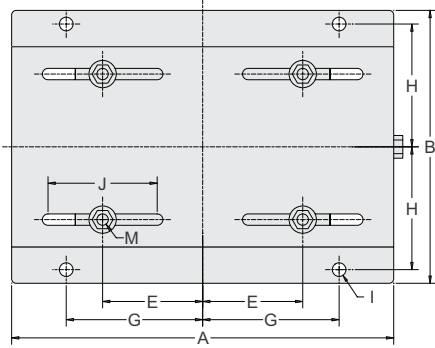


SLIDE BASE SELECTION

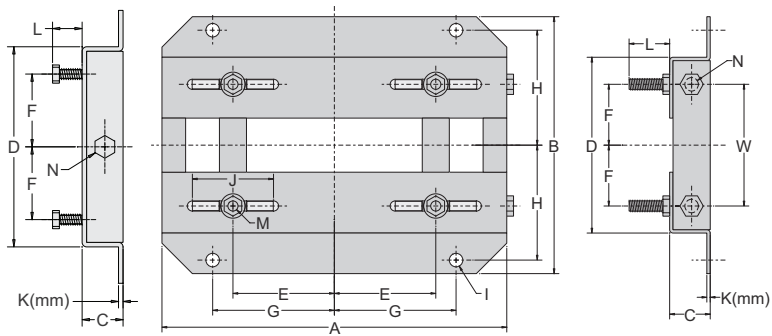
STABLE™ Motor Slide Bases			
Part Number	Fits Frame Type	Product Weight (lb)	IronHorse Model
MTA-BASE-W56*	56C*	2.8	MTR(2)-xxx-xxxxx* MTRP-xxx-xxxxx
MTA-BASE-W143T	143T/TC	4.6	MTC(P)-001-3BD18(C)(CK) MTC(P)-1P5-3BD36
MTA-BASE-W145T	145T/TC	5.1	MTC(P)-001-3BD12 MTC(P)-1P5-3BD18(C)(CK) MTC(P)-002-3BD18(C)(CK) MTC(P)-002-3BD36
MTA-BASE-W182T	182T/TC	9.2	MTC(P)-1P5-3BD12 MTC(P)-003-3BD18(C)(CK) MTC(P)-003-3BD36 MTF-002-1C18-182
MTA-BASE-W184T	184T/TC	10	MTC(P)-002-3BD12 MTC(P)-005-3BD18(C)(CK) MTC(P)-005-3BD36 MTF-00x-1C18
MTA-BASE-W213T	213T/TC	13	MTC(P)-003-3BD12 MTC(P)-7P5-3BD18(C)(CK) MTC(P)-7P5-3BD36
MTA-BASE-W215T	215T/TC	15	MTC(P)-005-3BD12 MTC(P)-010-3BD18(C)(CK) MTC(P)-010-3BD36
MTA-BASE-W254T	254T/TC	18	MTC(P)-7P5-3BD12 MTC(P)-015-3BD18(C)(CK) MTCP-015-3BD36
MTA-BASE-W256T	256T/TC	19	MTC(P)-010-3BD12 MTC(P)-020-3BD18(C)(CK) MTCP-020-3BD36
MTA-BASE-W284T	284T/TC	20	MTCP-015-3BD12 MTC(P)-025-3BD18(C)(CK)
MTA-BASE-W286T	286T/TC	21	MTCP-020-3BD12 MTC(P)-030-3BD18(C)(CK)
MTA-BASE-W324T	324T/TC	30	MTC(P)-040-3BD18(C)(CK)
MTA-BASE-W326T	326T/TC	31	MTC(P)-050-3BD18(C)(CK)
MTA-BASE-W364T	364T/TC	43	MTC(P)-060-3BD18(C)(CK)
MTA-BASE-W365T	365T/TC	43	MTC(P)-075-3BD18(C)(CK)
MTA-BASE-W404T	404T/TC	58	–
MTA-BASE-W405T	405T/TC	60	MTC(P)-100-3BD18(C)(CK)
MTA-BASE-W444T	444T	63	MTC(P)-125-3BD18
MTA-BASE-W445T	445T	65	MTC(P)-150-3BD18
MTA-BASE-W447T	447T	89	MTC(P)-200-3BD18
MTA-BASE-W449T	449T	94	MTC-250-3D18 MTC-300-3D18

* IronHorse MTR2 and MTRP 56HC motors have double-punched bases to mount on slide base MTA-BASE-W56

SLIDE BASE DIMENSIONS



W56 - W145T Motor Slide Base Dimensions

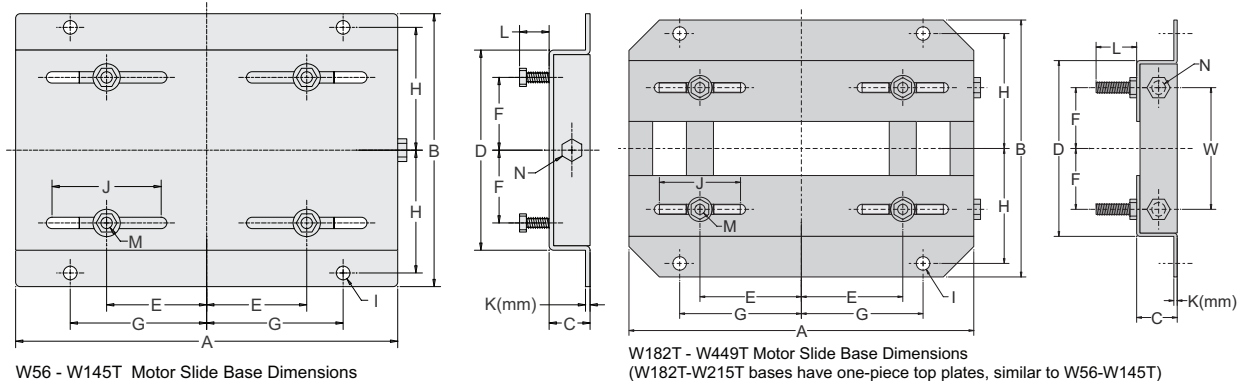


W182T - W449T Motor Slide Base Dimensions
(W182T-W215T bases have one-piece top plates, similar to W56-W145T)

Dimensions [inches, except as noted] - STABLE™ Motor Slide Bases							
MTA-BASE-Wxxxx	A	B	C	D	E	F	G
56	10-5/8	6-1/2	1-1/8	4-1/2	2-7/16	1-1/2	3-13/16
143T	10-1/2	7-1/2	1-1/8	5-1/2	2-3/4	2	3-3/4
145T	10-1/2	8-1/2	1-1/8	6-1/2	2-3/4	2-1/2	3-3/4
182T	12-3/4	9-1/2	1-1/2	6-1/2	3-3/4	2-1/4	4-1/2
184T	12-3/4	10-1/2	1-1/2	7-1/2	3-3/4	2-3/4	4-1/2
213T	15	11	1-3/4	7-1/2	4-1/4	2-3/4	5-1/4
215T	15	12-1/2	1-3/4	9	4-1/4	3-1/2	5-1/4
254T	17-3/4	15-1/8	2	10-3/4	5	4-1/8	6-1/4
256T	17-3/4	16-7/8	2	12-1/2	5	5	6-1/4
284T	19-3/4	16-7/8	2	12-1/2	5-1/2	4-3/4	7
286T	19-3/4	18-3/8	2	14	5-1/2	5-1/2	7
324T	22-3/4	19-1/4	2-1/2	14	6-1/4	5-1/4	8
326T	22-3/4	20-3/4	2-1/2	15-1/2	6-1/4	6	8
364T	25-1/2	20-1/2	2-1/2	15-1/2	7	5-5/8	9
365T	25-1/2	21-1/2	2-1/2	16-1/2	7	6-1/8	9
404T	28-3/4	22-3/8	3	16-1/2	8	6-1/8	10
405T	28-3/4	23-7/8	3	18	8	6-7/8	10
444T	31-1/4	24-5/8	3	19-1/4	9	7-1/4	11
445T	31-1/4	26-5/8	3	21-1/4	9	8-1/4	11
447T	31-1/4	30-1/8	3	24-3/4	9	10	11
449T	31-1/4	35-1/8	3	29-3/4	9	12-1/2	11

**** Table Continued Next Page for Dimensions H-W ****

SLIDE BASE DIMENSIONS (CONTINUED)



W56 - W145T Motor Slide Base Dimensions

W182T - W449T Motor Slide Base Dimensions
(W182T-W215T bases have one-piece top plates, similar to W56-W145T)

**** Table Continued from Previous Page for Dimensions A-G ****

Dimensions [inches, except as noted] - STABLE™ Motor Slide Bases (continued)								
MTA-BASE-Wxxxx	H	I	J	K(mm)	L	M	N	W
56	2-7/8	3/8	3	2 mm	7/8	5/16 x 1	3/8 x 4	n/a
143T	3-3/8	3/8	3	3 mm	13/16	5/16 x 1	3/8 x 4	n/a
145T	3-7/8	3/8	3	3 mm	13/16	5/16 x 1	3/8 x 4	n/a
182T	4-1/4	1/2	3	3.5 mm	1-1/2	3/8 x 1-3/4	1/2 x 6	4-1/2
184T	4-3/4	1/2	3	3.5 mm	1-1/2	3/8 x 1-3/4	1/2 x 6	5-1/2
213T	4-3/4	1/2	3-1/2	3.8 mm	1-1/2	3/8 x 1-3/4	1/2 x 6	5-1/2
215T	5-1/2	1/2	3-1/2	3.8 mm	1-1/2	3/8 x 1-3/4	1/2 x 6	7
254T	6-5/8	5/8	4	4.6 mm	1-7/16	1/2 x 1-3/4	5/8 x 6	5-5/16
256T	7-1/2	5/8	4	4.6 mm	1-7/16	1/2 x 1-3/4	5/8 x 6	7
284T	7-1/2	5/8	4-1/2	4.6 mm	1-11/16	1/2 x 2	5/8 x 6	7
286T	8-1/4	5/8	4-1/2	4.6 mm	1-11/16	1/2 x 2	5/8 x 6	8
324T	8-1/2	3/4	5-1/4	4.6 mm	2-3/16	5/8 x 2-1/2	3/4 x 9	7
326T	9-1/4	3/4	5-1/4	4.6 mm	2-3/16	5/8 x 2-1/2	3/4 x 9	8-1/2
364T	9-1/8	3/4	6	5.8 mm	2-1/16	5/8 x 2-1/2	3/4 x 9	7-3/4
365T	9-5/8	3/4	6	5.8 mm	2-1/16	5/8 x 2-1/2	3/4 x 9	8-3/4
404T	9-7/8	7/8	7	5.8 mm	2-1/2	3/4 x 3	3/4 x 11	8-3/4
405T	10-5/8	7/8	7	5.8 mm	2-1/2	3/4 x 3	3/4 x 11	10-1/4
444T	11	7/8	7-1/2	5.8 mm	2-1/2	3/4 x 3	3/4 x 11	11
445T	12	7/8	7-1/2	5.8 mm	2-1/2	3/4 x 3	3/4 x 11	13
447T	13-3/4	7/8	7-1/2	8 mm	3	3/4 x 3-1/2	3/4 x 11	16-1/2
449T	16-1/4	7/8	7-1/2	8 mm	3	3/4 x 3-1/2	3/4 x 11	21-1/2

**BLANK
PAGE**