

Canon



PRODUCTION SOLUTIONS



meap
POWERED BY 



imageRUNNER®
7105 / 7095 / 7086

PRODUCTION SOLUTIONS

CHALLENGE YOUR DOCUMENT PRODUCTION STANDARDS

High-speed imageRUNNER® technology meets the rigors of high-volume offices and production environments with unmatched versatility.



imageRUNNER®
7105 / 7095 / 7086

Designed to support enterprise-class environments demanding the utmost in productivity and durability, the imageRUNNER 7105/7095/7086 devices provide versatility in both functionality and hardware configuration.

The imageRUNNER 7105/7095 devices are perfectly suited for central reproduction departments, print-for-pay establishments, print-on-demand applications, and large corporate offices where rapid document capture and production are required. The imageRUNNER 7086 device offers the speed and versatility to serve as a complete document publishing and communications hub device for busy corporate departments. And best of all, each model is Internet-ready, so you can be assured of the tightest possible integration and device control across your entire corporate network.

CHALLENGE YOUR DOCUMENT PRODUCTION CAPABILITIES

The imageRUNNER 7105, imageRUNNER 7095, and imageRUNNER 7086 devices will redefine your expectations for total in-house black-and-white document production.

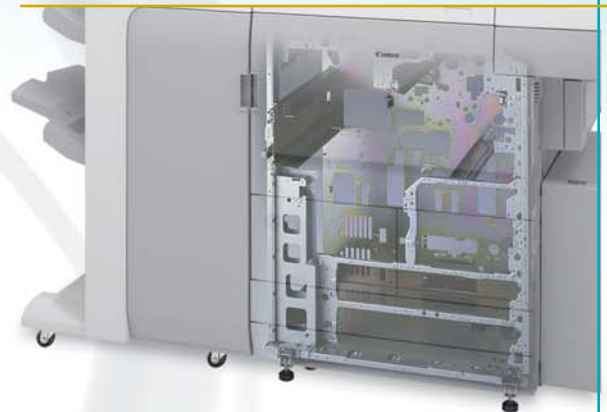
PRODUCTIVITY

While their output speeds are impressive, it's what Canon has done to each system's internal design that's truly inspiring. Every model features dual Canon custom processor technology to handle sophisticated applications with incredible speed. With available support for actual 1200 x 1200 dpi* print resolution and Canon's exclusive Fine Character and Edge Technology (FCET), you can count on outstanding image quality on every page.



Color LCD panel

Job programming is a breeze, thanks to an oversized color LCD user interface panel that clearly displays available modes and functions. From the desktop, intuitively designed drivers and utilities guide connected users through jobs with point-and-click simplicity.



A sturdy engine design provides maximum durability

RELIABILITY

Each imageRUNNER 7105/7095/7086 device is infused with the strength and power needed to withstand the daily punishment of production environments. A sturdy, reinforced frame offers rock-solid stability, while multifeed detection technology stands guard against double-feeds and lost productivity. These improvements, along with high-durability parts and components, add up to superior reliability for environments producing huge volumes of pages every month.

DURABILITY

Set new expectations for uptime and maintenance requirements. A high-capacity toner bottle design provides quick and clean replacement and can be changed while the machine is running for non-stop productivity. And with a long-lasting 6,000,000-impression Amorphous-Silicon (A-Si) drum, the imageRUNNER 7105/7095/7086 devices deliver low operating costs and less downtime.



"Set-On" Toner Bottle



A-Si Drum

* Only available with certain page description languages.

CHALLENGE YOUR SYSTEM VERSATILITY EXPECTATIONS

The Finisher-V1 or Saddle Finisher-V2 provides the collating, stapling, saddle-stitching and optional punching flexibility required for busy production environments.

Install the Document Insertion Unit-C1 on top of the Finisher Units to feed booklet covers into job streams.

Add the Perfect Binder-A1* to produce perfectly bound and trimmed books with wraparound covers.

The Professional Puncher-A1* offers a number of optional hole-punch tools to ready documents for advanced binding applications.

Attach the Booklet Trimmer-C1 to the Saddle Finisher-V2 to trim the open end of booklets.

The Paper Folding Unit-D1 Z-folds 11" x 17" pages into document sets with a finished 8-1/2" x 11" size.

**The Professional Puncher-A1 cannot be installed simultaneously with the Perfect Binder-A1. The Professional Puncher-A1 and the Puncher Unit-V1 can be installed simultaneously in the same configuration.*

Note: Some accessories require additional equipment or may be prerequisites for other options. Check with your local Authorized Canon Dealer for details.

The imageRUNNER 7105, imageRUNNER 7095, and imageRUNNER 7086 devices are modular, allowing you to mix and match the paper supply and advanced finishing accessories you need to meet your diverse publishing requirements and drive productivity to new levels.

The High-Capacity Stacker-A1 neatly stacks sheets for long periods of unattended operation. Includes a removable dolly.

The standard Duplexing Automatic Document Feeder makes quick work of complex originals.

Add the Paper Deck-W1 or Paper Deck-X1 to raise system paper capacity to a maximum of 7,650 sheets.



Perfect-Bound Booklets



Professional Punching



Z-Folding



Saddle-Stitched Booklet



Stapled Output

CHALLENGE YOUR NETWORK PRINTING STANDARDS

Powerful connectivity solutions for every production environment, application, and budget.

Canon imageRUNNER 7105/7095/7086 devices can be configured with three different print controller options to keep pace with demanding departments and page-churning production environments.

CANON MULTI-PDL PRINTER KIT

The optional Multi-PDL Printer Kit-H2 is an embedded controller that provides support for PCL and PostScript® 3™ emulation, plus Canon's proprietary UFR II (Ultra Fast Rendering) technology for exceptional printing performance in both Windows® and Macintosh® networks. Canon's consistent driver architecture provides intuitive print settings and dynamic device information, such as configuration and available media.

The imageRUNNER 7105/7095/7086 devices support Job Definition Format (JDF) for enhanced print workflows in production environments. When used together with Canon's imageWARE™ Prepress Manager and imageWARE Print Job Manager, documents can be submitted as a JDF file format with customized pre-press, printing or finishing settings.** These JDF files can be printed or submitted into the Hold Queue of the device and then operators can easily manage, Preview, Job Ticket Edit, and Sample Print multiple queued jobs from the device.

imagePASS-S2

The optional imagePASS-S2 external print server is a robust solution for light-production environments, and supports genuine Adobe® PostScript 3 and PCL. The standard Command Workstation® software provides an intuitive graphical user interface for managing jobs, print queues and workflows from a centralized location, and the Hot Folders option enhances productivity by automating job submission and helps reduce setup errors. Additional advanced software includes FreeForm™ (standard) and EFI Impose (optional).

EFI MicroPress

For large production environments, the EFI® MicroPress Server (optional) delivers true multi-engine clustering of up to 12 imageRUNNER 7105/7095/7086 devices at their maximum rated speed. Designed to manage every aspect of the pre-press to finishing production process, the MicroPress server includes industry leading tools to automate document creation, manage collation and finishing, and overcome print errors across multiple engines—all from an intuitive WYSIWYG, drag-and-drop interface.

The MicroPress server simplifies the task of printing jobs that contain both color and monochrome pages when used with a Color imageRUNNER C5185 Series device. Color output from the Color imageRUNNER device can be placed into the insertion unit of an imageRUNNER 7105/7095/7086 device to complete the workflow through its powerful collating and finishing capabilities.

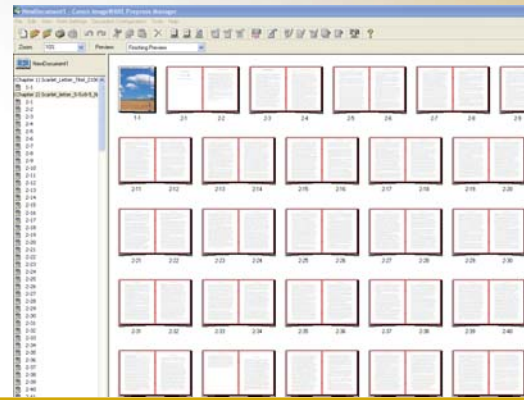
** Check with your Authorized Canon Dealer for availability of imageWARE Prepress Manager and imageWARE Print Job Manager.

PUBLISH PROFESSIONAL-LOOKING DOCUMENTS

Build complex documents in a simple drag-and-drop environment with Canon's powerful imageWARE Prepress Manager software. This optional desktop publishing utility simplifies the production of professional-looking documents containing various inserts or chapters from multiple files. Merge, edit, or reassemble content from several sources such as manuals, presentations, brochures, proposals, and catalogs into a single, cohesive document—even combine documents created in different applications.

The imageWARE Prepress Manager software option completes the digital workflow by driving all the advanced finishing options of the imageRUNNER 7105/7095/7086 devices. The all-in-one application features a highly intuitive make-ready

interface and professional functionality such as perfect bind support, advanced imposition options, spine editing, creep correction, content editing tools, and variable data printing.



imageWARE Prepress Manager

Canon provides all the tools you need for a complete, easy-to-use, in-house document production system!

Print Controller Options

Multi-PDL Print Kit

High-volume office printing option:



- Canon UFR II, PCL, and PS Emulation Support
- JDF Workflow Support through imageWARE Prepress Manager option and job hold function
- Canon imageWARE Print Job Manager to manage multiple jobs

imagePASS

Print server for light-production environments:



- Genuine PostScript 3™ and PCL 5e /6 Support
- Command Workstation to centrally manage jobs
- Hot folders, FreeForm™ and EFI Impose options

EFI MicroPress

True multi-engine connectivity and clustering:



- Up to 12 imageRUNNER 7105/7095/7086 devices
- Up to 5 color imageRUNNER C5185 Series devices



imageRUNNER 7105

* Check for availability of JDF workflow support.

CHALLENGE YOUR DOCUMENT WORKFLOW STANDARDS

Multitask, reduce costs, speed job turnaround, get more done every day—that's what high-volume productivity is all about.

BOOST YOUR EFFICIENCY

The imageRUNNER 7105/7095/7086 devices offer a host of document reproduction and storage features to ensure that every job is produced on time, every time.

To make the production of complicated documents manageable, users can combine different sets of documents into one with Job Block Combination at the device. Each set can be configured to run with unique settings, such as paper type and size, finishing, color, and more, then tested with the Sample Set feature or stored in a Mail Box for later use. Offset-stack document sets in groups can also speed preparation for off-line finishing or packaging. From the desktop, individual or groups of pages in documents can be configured with the new Exceptional Settings tab* in the print driver to control output settings such as media type, paper size, input tray and finishing options.



Express Copy

Universal Send



COMMUNICATE WITH EASE

Canon's Universal Send technology enables you to distribute scanned documents to multiple network destinations—such as e-mail and Internet fax addresses, local Mail Boxes, network folders, and document management systems—in one simple operation. Help prevent impersonation or interception of information with the Digital Device Signature and Digital User Signature options, which verify a document's source and its sender. Documents can be password protected with 128-bit AES encryption using the optional Encrypted PDF feature. And to locate the documents you need quickly and easily, you can also create searchable PDF files.

RETRIEVE INFORMATION ANYTIME

Transform your imageRUNNER system into an on-site information retrieval kiosk with the optional Web Access function. Navigate Internet or intranet pages right from the color LCD panel to locate and output desired forms or documents, without the need for a PC.

* Only available with PostScript 3 Emulation.

CHALLENGE YOUR DEVICE MANAGEMENT STANDARDS

Your need to address device management, system monitoring, and data security can now be met.

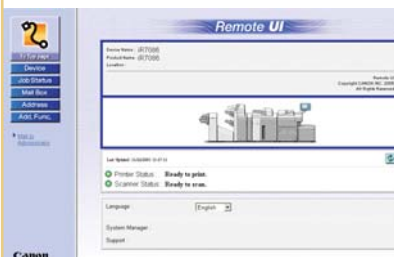
SIMPLIFY INSTALLATION AND INTEGRATION

Through a comprehensive suite of Canon-supplied software utilities, the Canon imageRUNNER 7105/7095/7086 devices answer the call for solutions that are easy to install, can seamlessly integrate with existing network management applications, and allow for monitoring and device control from anywhere on the network.

Canon's imageWARE Enterprise Management Console (EMC) is a Web-based utility that simplifies and centralizes device installation and management, whether you're supporting a single system or a fleet of networked devices. Administrators can also easily replicate settings and Address Books across multiple devices through the Device Information Delivery Function (DIDF). With Remote UI (User Interface), end-users can check device status and configuration before initiating a job for more informed printing decisions.

REDUCE USER ADMINISTRATION

Administrators have a choice of methods to control access and privileges to imageRUNNER 7105/7095/7086 devices, including Single Sign-On (SSO) using network accounts, Simple Device Log-In (SDL), and Department ID Mode with optional Control Card/Card Reader system. Using the Access Management System option, administrators also have powerful control over access to the device and its functions at both the user- and group-level for even greater security and cost control.



Remote UI Screen

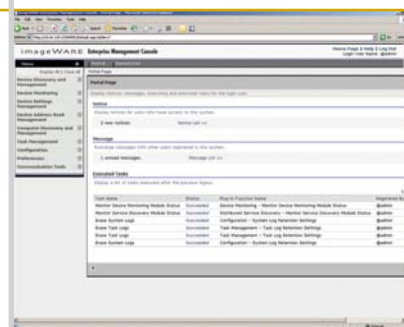
TIGHTEN YOUR NETWORK SECURITY

Beyond user-level authentication, network access to the device can also be restricted to specific IP/MAC addresses or ranges. With the Encrypted Secured Print option, all print data sent over the network is encrypted and password-protected at the device. Once the correct password has been entered, it will be printed and immediately deleted.

PROTECT YOUR SENSITIVE DATA

Protect your imageRUNNER 7105/7095/7086 device with advanced features that guard against unauthorized data access. To protect your stored, scanned, and printed data, the HDD Data Erase Kit automatically overwrites previously stored data. The HDD Data Encryption option provides additional security by encrypting data before it is written to the hard disk drive, and has achieved EAL3 Common Criteria (CC) certification. You can even embed secure watermarks that appear when unauthorized copies are made to help prevent leaks of confidential information.

imageWARE Enterprise Management Console



CHALLENGE THE CONVENTIONAL

Innovative device customization and accessibility technologies to empower everyone on your team.

MEET UNIQUE WORKFLOWS

Based on Java technology, Canon MEAP® (Multifunctional Embedded Application Platform) architecture allows the system to incorporate unique applications that run embedded within the device. The result is total integration into your company's infrastructure by presenting customized applications to walk-up users directly from the imageRUNNER 7105/7095/7086 systems' color LCD panel.

EQUAL ACCESS FOR ALL

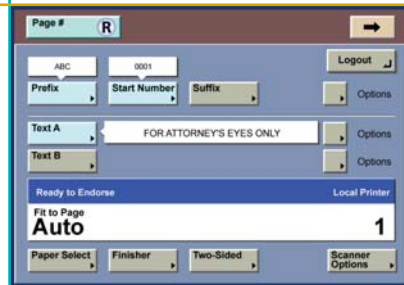
The imageRUNNER 7105/7095/7086 devices go even further to provide easy system access to every authorized user. Disabled employees can operate system functions from a laptop or desktop PC using the optional Remote Operator's Software Kit that emulates the control panel; visually impaired users can receive audible job confirmation via the optional Voice Guidance Kit.

IMAGE OF A LEADER

As a leading producer of network-connected multifunction devices, Canon continues to set new standards for quality, performance, and reliability. That's why businesses of every size and scope trust Canon to provide industry-leading solutions that enhance productivity and make every business more productive.



Voice Guidance Kit



MEAP Application: Ribstone



MEAP Application: eCopy Share Scan™



MEAP Application: imageWARE Document Manager Client for MEAP

SPECIFICATIONS

Main Unit

Type:	Digital Multifunctional Imaging System
Imaging System:	Laser Dry Electrostatic Transfer
Developing System:	Dry Monocomponent Toner Projection
Main Unit CPU:	Dual Canon Custom Processors
Interface Connection:	10/100Base-TX (RJ-45), Hi-Speed USB 2.0
Image Server Memory:	Standard 1GB RAM + 40GB HDD
Max. Mail Boxes Supported:	100 (Max. Page Capacity: Approximately 20,000 pages)
Max. Copy Reservation:	20 Jobs
Acceptable Originals:	Sheets, Books, 3-Dimensional Objects up to 4.4 lb.
Max. Original Size:	11" x 17"
Max. Copy Size:	11" x 17"
Min. Copy Size:	3-15/16" x 5-7/8" (Stack Bypass)
Scanning Resolution:	600 x 600 dpi
Copy Resolution:	1200 x 600 dpi (Interpolated)
Halftone:	256-Level Grayscale
Exposure Control:	Automatic or Manual (Text, Photo, or Text/Photo)
Copy Speed	
7105:	105 cpm (Letter) 53 cpm (11" x 17")
7095:	95 cpm (Letter) 49 cpm (11" x 17")
7086:	86 cpm (Letter) 43 cpm (11" x 17")
First-Copy Time	
7105/7095:	2.8 Seconds (From Platen)
7086:	3.0 Seconds (From Platen)
Warm-Up Time:	6 Minutes or Less
Multiple Copies:	1 – 9,999
Duplexing:	Standard Automatic Trayless Duplexing
Magnification	
From Glass:	25% - 400% (In 1% increments)
From Feeder:	25% - 200% (In 1% increments)
Preset Reduction:	25%, 50%, 64%, 73%, 78%
Preset Enlargement:	121%, 129%, 200%, 400%
Standard Paper Supply:	Dual Front-Loading Drawers (1,500 Sheets Each) Dual Front-Loading Cassettes (550 Sheets Each) 50-Sheet Stack Bypass
Optional Paper Supply:	3,500-Sheet Paper Deck-W1/X1
Paper Capacity:	Standard: 4,150 Sheets Maximum: 7,650 Sheets
Acceptable Paper Weight:	17 lb. Bond to 110 lb. Index (All Sources)
Power Consumption	
7105/7095:	2.15kW
7086:	2kW
Plug:	NEMA 6-15R
Photoconductor Yield:	6 Million Impressions
Toner Yield:	47,000 Images @ 6% Coverage
Duplex Automatic Document Feeder (imageRUNNER 7105/7095)	
Tray Capacity:	100 Sheets
Scanning Speed:	85 Sheets Per Minute (Letter)
Acceptable Original Sizes:	Statement to 11" x 17"
Acceptable Size Originals:	Same Width
Acceptable Paper Weight:	13 lb. Bond to 80 lb. Cover

Duplex Automatic Document Feeder (imageRUNNER 7086)

Tray Capacity:	100 Sheets
Scanning Speed:	65 Sheets Per Minute (Letter)
Acceptable Original Sizes:	Statement to 11" x 17"
Acceptable Size Originals:	Same Width, Different Width
Acceptable Paper Weight:	13 lb. to 32 lb. Bond

Optional Accessories

Paper Deck-W1/Paper Deck-X1

Paper Capacity:	3,500 Sheets
Number of Drawers:	1
Acceptable Paper Weight:	17 lb. Bond to 110 lb. Index
Acceptable Paper Size	
Paper Deck-W1:	Letter
Paper Deck-X1:	Letter-R, Letter, Legal, 11" x 17"

Perfect Binder-A1*

Bind Method:	Perfect Binding
Cutting Method:	Stack Rotation 3-Direction, or 1-Direction (for Open Edge) Cut

Finished Book Size: (After 3-Direction Cutting)

Width:	7-1/8" to 11-1/4"
Length:	5-5/8" to 8-1/4"
Book Thickness:	10 to 200 Sheets Using 17 to 24 lb. Bond 10 to 150 Sheets Using 24 to 28 lb. Bond 10 Sheets Using 28 lb. Bond to 110 lb. Index

Cover Source Location: Stack Bypass, Paper Drawers, Paper Deck (Imageable) Document Insertion Unit (For Pre-Printed Covers)

Stacker Tray Capacity: 3.94" (100mm) (Equivalent to 10 100-page Books with 17 lb. Bond)

Glue Supplies and Yield: Glue-A1 (33 lb./15kg): Estimated Yield: 5,000 Sets of 100 Sheet Books (20 lb. Bond)
Glue-A2 (11 lb./5kg): Estimated Yield: 1,650 Sets of 100 Sheet Books (20 lb. Bond)

Glue Warm-Up Time: 380 Seconds or Less

Glue Unit Capacity: Bind Approximately 180 100-page Books Using 20 lb. Bond Paper

Trim Range
Width: 7mm – 27mm
Length: 7mm – 39mm
Adjustable in 1mm increments

Trimmer Waste Capacity: Space for 3-Sided Cuttings From Approximately 15 100-page Books

Document Insertion Unit (Standard With Perfect Binder-A1)

Acceptable Media: Covers and Inserts

Number of Trays: 2

Tray Capacity
Upper Tray: 200 Sheets (20 lb. Bond)
Lower Tray: 200 Sheets (20 lb. Bond)

Acceptable Paper Weight: 17 lb. Bond to 158 lb. Index

Acceptable Paper Sizes
Upper Tray: Letter, Letter-R, Executive
Lower Tray: 11" x 17", Legal, Letter, Letter-R, Executive

Finisher-V1/Saddle Finisher-V2

Number of Trays: 2/3

Tray Capacity
Top Tray: 3,000 Sheets
Lower Tray: 2,000 Sheets
Saddle-Stitch Tray: 30 Booklets or Limitless

Acceptable Paper Weight

Finisher-V1:	17 lb. Bond to 110 lb. Index
Saddle Finisher-V2:	17 lb. Bond to 110 lb. Index
Acceptable Paper Size:	11" x 17", Legal, Letter, Letter-R, Statement-R, Executive

Staple Positions: Corner Stapling, Double Stapling

Max. Stapling Capacity: 100 Sheets (Letter, Executive)
50 Sheets (11" x 17", Legal, Letter-R)

Type of Staple: Staple-N1 (5,000 x 3)

Saddle-Stitching (Saddle Finisher-V2 Only)

Acceptable Paper Size: 11" x 17", Legal, Letter-R

Folding Mode: V-Folding Standard

Stapling Capacity: 20 Sheets (80 Pages)

Type of Staple: Staple-P1 (5,000 x 2)

Professional Puncher-A1* (For Finisher-V1/Saddle Finisher-V2)

Type: External In-Line Punch Unit

Hole-Punching Method: Press Punch Unit

Acceptable Punch
Paper Weight: 20 lb. Bond to 80 lb. Cover

Acceptable Punch Paper Size: Letter

Punch Speed: Up to 105 ppm (Depending on speed of main unit)

Punch Patterns (Optional): Plastic Comb (19-Hole)
Twin Loop (32-Hole)
Twin Loop (21-Hole)
Color Coil (44-Hole)
Velo Bind (11-Hole)
Loose-leaf Bind (3-Hole)
Proclick (32-Hole)

Puncher Unit-V1 (For Finisher-V1/Saddle Finisher-V2)

Type: Internal Punch Unit

Hole-Punching Method: Press Punch System

Acceptable Punch
Paper Weight: 17 lb. Bond to 110 lb. Index

Acceptable Punch Paper Size
Two Holes: Legal, Letter-R
Three Holes: 11" x 17", Letter

Punch Speed: Up to 105 ppm (Depending on speed of main unit)

Document Insertion Unit-C1 (For Finisher-V1/Saddle Finisher-V2)

Number of Trays: 2

Capacity
Upper Tray: 200 Sheets
Lower Tray: 200 Sheets

Acceptable Paper Weight: 17 lb. Bond to 158 lb. Index

Acceptable Paper Size
Upper Tray: Letter, Letter-R, Executive
Lower Tray: 11" x 17", Legal, Letter, Letter-R, Executive

Paper Folding Unit-D1 (For Finisher-V1/Saddle Finisher-V2)

Folding Method: Roller Pressure Folding

Folding Type: Z-Fold

Acceptable Paper Weight: 17 lb. Bond to 20 lb. Bond

Acceptable Paper Size: 11" x 17"

Booklet Trimmer-C1 (For Saddle Finisher-V2)

Margin Trimming: Open-End Only

Trim Thickness: 40 Sheets

Waste Tray Capacity: 1,500 Sheets of Trimmed Strip

Acceptable Paper Weight: 17 lb. Bond to 110 lb. Index

Output Tray Capacity: 30 Booklets

Specifications are continued on back cover.

Connectivity Options

Universal Send Kit-E1

Sending Methods:	E-mail, I-fax, File Server (FTP, SMB, IPX, WebDAV), User Inbox
Address Book Capacity:	1,800 Destinations
Communication Protocol	
File:	FTP(TCP/IP), SMB (TCP/IP), NCP(IPX), WebDAV
E-mail/I-Fax:	SMTP, POP3, I-Fax(Simple, Full)
Supported Data Format	
File/E-mail:	TIFF, PDF, PDF(OCR), Encrypted PDF, Digital Dence Signature PDF, Digital User Signature PDF
I-Fax:	TIFF(MH, MR, MMR)

Canon Multi-PDL Printer Kit-H2

Processor:	Dual Canon Custom Processors
Memory:	1 GB – Shared
Storage:	40 GB – Shared
PDL Support:	PCL 5e, PCL 6, PostScript® 3 Emulation, UFR II
Resolution:	1200 x 1200 dpi: UFR II, PCL 6, PostScript 3 Emulation 2400 x 600 dpi: PCL 5e
Interface Connections	
Standard:	10/100Base-TX (RJ-45), Hi-Speed USB 2.0

Network OS:	Windows® 98/Me/2000/XP Windows Server 2003/ Windows Vista™ Solaris 1.1x, 2.5x or Later Macintosh® OS 8.0 or Later (PPD) Novell® NetWare® v3.2, 4.1, 4.11, 4.2, 5, 5.1, 6, 6.5 (IPX/SPX)
--------------------	--

imagePASS-S2

Type:	External Print Controller
CPU:	Intel® Celeron® D @ 2.8GHz
Operating System:	System 8e
Memory:	256MB RAM (Standard) 512MB RAM (Maximum)
Hard Disk Drive:	80GB (Standard)
Interface Connections:	10/100/1000Base-TX (RJ-45)
Supported PDLs:	Adobe PostScript® 3™, PCL 5e/6
Resolution:	PCL 5e: 2400 x 600 dpi (Interpolated) PCL 6/PS3: 1200 x 1200 dpi**
Printer Drivers:	Windows 98/Me/2000/XP Windows NT 4.0/ Server 2003/ Windows Vista Citrix MetaFrame Macintosh OS X (OS 10.2 or Later)
Internal Fonts:	136 Adobe Type 1 Roman PS Fonts
Network Operating System:	Apple Macintosh OS 9.1 (PPD), OS X (10.2.8 or Later) Solaris 8.0 or Later Sun OS 4.1.3 or Later

Windows 2000/XP/Server 2003/Windows Vista	Novell NetWare v4.2, 5.1, 6.1 Hot Folders and Virtual Printers, Impose v2.6, 256 RAM
--	---

EFI Options:

Other Accessories

- Cassette-AB1
- Tab Feeding Attachment-A1
- Document Tray-L1
- Braille Label Kit-A1
- Control Card Reader-D1
- Control Card Sets
- Universal Send Searchable PDF Kit-A1
- Universal Send PDF Security Feature Set-A1
- Digital User Signature Kit-A1
- Encrypted Secure Print Software-C1
- Web Access Software-F1
- Remote Operator's Software Kit-A1
- Expansion Bus-D1
- HDD Data Encryption Kit-B2
- HDD Data Erase Kit-A1
- Voice Guidance Kit-A2
- Secure Watermark Kit-A1
- Barcode Printing Kit-A1
- Finisher Option Power Supply Unit-R1
- High Capacity Stacker-A1
- Stacker Dolly-A1
- Punch Tools for Professional Puncher-A1
- ADF Access Handle-A1
- Access Management System Kit-A1

* The professional Puncher-A1 cannot be installed simultaneously with the Perfect Binder-A1. The Professional Puncher-A1 and Puncher Unit-V1 can be installed simultaneously.

** 1200 x 1200 dpi resolution for PCL printing is not supported on Windows 9x/Me Clients.

NOTE: Some accessories require additional equipment or may be prerequisites for other options. Check with your Authorized Canon Dealer for details.

Device Dimensions and Power Requirements Chart

Product/Accessory Name	Dimensions (H x W x D)	Weight	Power
Main Unit	58" x 47-7/8" x 30-7/8" (1474mm x 1216mm x 783mm)	7105/7095: 617 lb. (280kg) 7086: 595 lb. (270kg)	208V, 60Hz, 12A
Paper Deck-W1	22-1/2" x 12-3/4" x 23" (570mm x 323mm x 583mm)	90.4 lb. (41kg)	Directly From Main Unit
Paper Deck-X1	22-5/8" x 23-3/8" x 24-1/2" (574.5mm x 593mm x 621mm)	101 lb. (46kg)	
High-Capacity Stacker-A1	48-9/10" x 33-9/10" x 30-1/5" (1240mm x 860mm x 765mm)	440 lb. (200kg)	120V, 10A
Perfect Binder-A1	53-1/2" x 36-1/4" x 31-1/8" (1360mm x 920mm x 783mm)	696 lb. (316kg)	208V, 15A
Finisher-V1	46-1/2" x 31-1/2" x 31-1/4" (1180mm x 800mm x 792mm)	278 lb. (126kg)	Directly From Main Unit* or 208V, 60Hz, 12A**
Saddle Finisher-V2	46-1/2" x 31-1/2" x 31-1/4" (1180mm x 800mm x 792mm)	392 lb. (178kg)	
Document Insertion Unit-C1	8-3/8" x 24-5/8" x 26-1/4" (213mm x 625mm x 667mm)	37.5 lb. (17kg)	From Finisher-V1 or Saddle Finisher-V2
Paper Folding Unit-D1	41" x 7-1/8" x 31" (1040mm x 179mm x 786mm)	97 lb. (44kg)	
Booklet Trimmer-C1	41" x 62-1/10" x 30-2/5" (1040mm x 1575mm x 770mm)	335 lb. (152kg)	
Professional Puncher-A1	38-1/2" x 12" x 28-1/2" (978mm x 305mm x 723mm)	154 lb. (70kg)	

* When Finisher is equipped with Paper Folding Unit-D1 and/or Document Insertion Unit-C1.

**When Finisher is equipped with Professional Puncher-A1, Booklet Trimmer-C1, High-Capacity Stacker-A1, and/or Perfect Binder-A1.

As an ENERGY STAR® Partner, Canon U.S.A., Inc. has determined that these products meet the ENERGY STAR guidelines for energy efficiency. ENERGY STAR and the ENERGY STAR mark are registered U.S. marks. Windows and Windows NT are registered trademarks of Microsoft Corporation in the United States and/or other countries. Adobe and PostScript are registered trademarks of Adobe Systems Incorporated in the United States and/or other countries. Macintosh is a registered trademark of Apple Computer, Inc. Intel and Celeron are registered trademarks of Intel Corporation. Novell and NetWare are registered trademarks of Novell, Inc. in the United States and other countries. Solaris and Sun are trademarks or registered trademarks of Sun Microsystems, Inc. in the United States and other countries. EFI and Command WorkStation are registered trademarks and FreeForm is a trademark of Electronics for Imaging, Inc. in the U.S. Patent and Trademark Office and certain other foreign jurisdictions. eCopy ShareScan is a trademark of eCopy, Inc. CANON, IMAGERUNNER, and MEAP are registered trademarks of Canon Inc. in the United States and may also be registered trademarks or trademarks in other countries. IMAGEWARE is a registered trademark of Canon U.S.A., Inc. in the United States and is a trademark of Canon Inc. in certain countries. IMAGEANYWARE is a trademark of Canon. All referenced product names and other marks are trademarks of their respective owners.

Specifications and availability subject to change without notice.
©2013 Canon U.S.A., Inc. All rights reserved.



Canon
image*ANYWARE*

1-800-OK-CANON
www.usa.canon.com

Canon U.S.A., Inc.
One Canon Park
Melville, NY 11747