

N



JAY R. SMITH MFG. CO.

MEMBER OF MORRIS GROUP INTERNATIONAL
 POST OFFICE BOX 3237
 MONTGOMERY, ALABAMA 36109-0237 (USA)
 TEL: 334-277-8520 FAX: 334-272-7396 www.jrsmith.com



MEMBER OF:



LOCATION

DRAWING NUMBER
S2710

SIZE
A

SCALE:
NONE

DATE:
11-6-89

APPROVED BY:
McD

CHECKED BY:
SB

DRAWN BY:
EMB

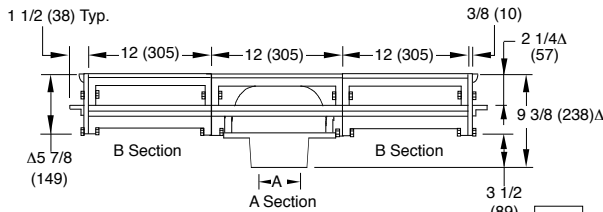
WE CAN ASSUME NO RESPONSIBILITY FOR USE OF SUPERSEDED OR VOID DATA

WIDE HEAVY DUTY TRENCH DRAINS

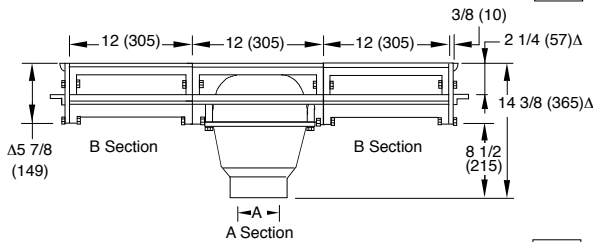
HEAVY DUTY MODULAR TRENCH DRAINS

FUNCTION: Used as a ramp drain in loading or parking areas where a wide continuous trench drain is required to handle moderate traffic loads and serve as a reservoir for large water runoff. Can also be used individually as an area drain (A Section Only).

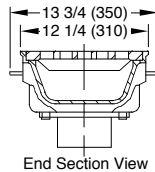
Free Area
 39.3 SQ IN
 (254)SQ CM
 (Each Section)



A (Pipe Size) = 03(75), 04(100), 05(125), 06(150) or 08(200)

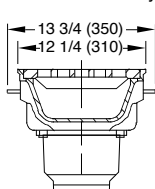


A (Pipe Size) = 03(75), 04(100), 05(125), 06(150) or 08(200)



End Section View

- FIG. 2710C CAULK OUTLET
- FIG. 2710Y NO-HUB OUTLET

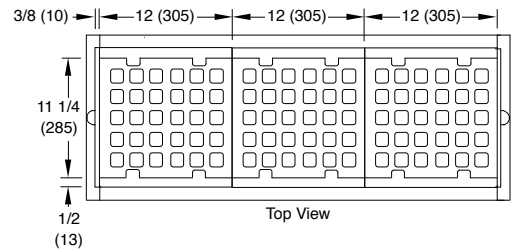


End Section View

- FIG. 2710C (-DH) CAULK OUTLET
- FIG. 2710Y (-DH) NO-HUB OUTLET

Deep Hub Body

Note: Apply sealant provided between each section and end plate prior to assembling.



Top View

Assembly ordering Information:

A and B sections are both 12"(305) long. A section is the outlet section and available in the standard hub or deep outlet hub (-DH). B section is the extension section. It is recommended that no more than 5, 12"(305) extension sections on each side of the A outlet section be used. Each section is 12" (305) long and end plates are 1 1/2"(38) thick including flange. In determining overall length, multiply 12" (305) x no. of sections and add 3"(76) (thickness of the two end plates).

- FIG. 2710 "A" Section
- FIG. 2711 "A" Section with (1) "B" Section
- FIG. 2712 "A" Section with (2) "B" Section
- FIG. 2713 "A" Section with (3) "B" Section
- FIG. 2714 "A" Section with (4) "B" Section
- FIG. 2715 "A" Section with (5) "B" Section
- FIG. 2716 "A" Section with (6) "B" Section
- FIG. 2717 "A" Section with (7) "B" Section
- FIG. 2718 "A" Section with (8) "B" Section
- FIG. 2719 "A" Section with (9) "B" Section
- FIG. 2720 "A" Section with (10) "B" Section

NOTE: Last digit of figure number designates number of "B" sections.

NOTE: Any figure number other than the 2710 and 2711 must be furnished with sectional layout when placing order, to insure proper assembly at jobsite.

REGULARLY FURNISHED:

Duco Cast Iron Flanged Body
 Outlet Section A and Flanged End Plate with Cast Iron Anti-Shift Loose Set Square Hole Grate.

Δ Add 1 1/4" (32) when Bronze Top is specified.

Note: B sections are shown above with the A section for illustrative purposes only. Only the A section is regularly furnished and additional B sections must be specified as determined by figure number.

VARIATIONS:

- Backwater Valve -V 02(50) -04"(100) (Deep Hub Body Only)
- Deep Hub -DH, Not Available in 08"(200)
- Dome Bottom Strainer -DBS
- Flashing Clamp -C
- Sediment Bucket -B (Deep Hub Body only)
- Vandal Proof Grate -U
- Quad Close Trap Seal (Specify Fig. 2692)

OPTIONAL MATERIALS:

- Ductile Iron Grate -M
- Galvanized Cast Iron -G
- Nickel Bronze Top -NB
- Polished Bronze Top -PB

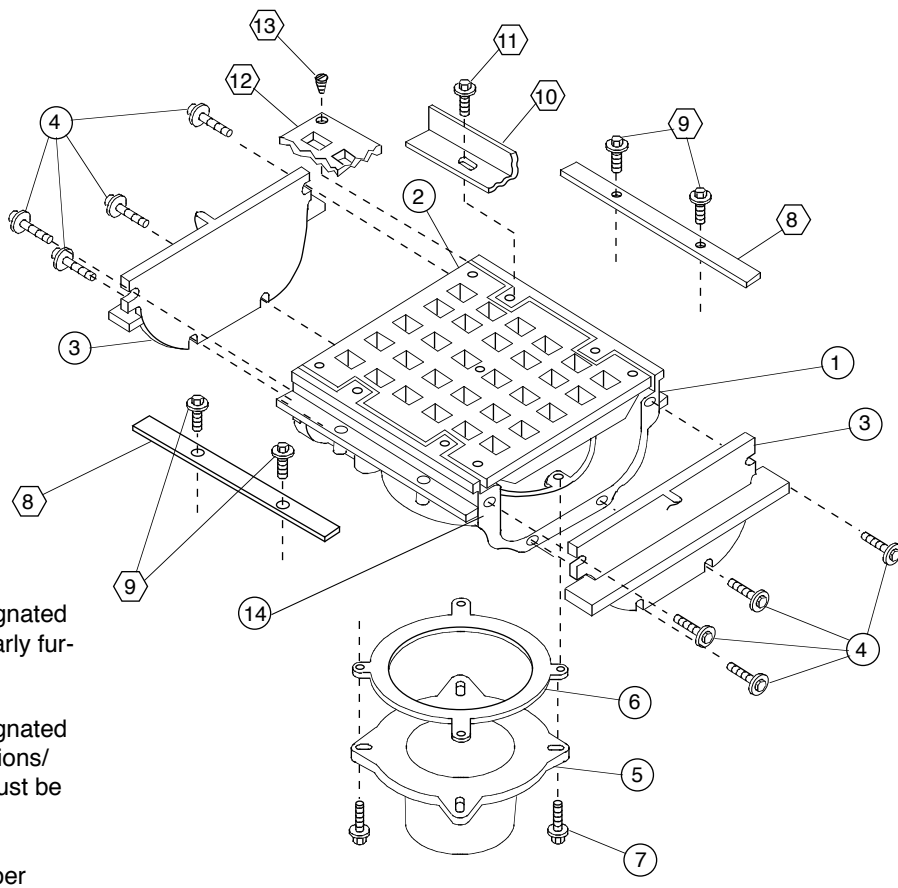
NOTE: Dimensions shown in parentheses are in millimeters.

2710 Series

FIGURE NUMBER

REV.	DATE	DESCRIPTION	BY	CKD. BY	WEIGHT POUNDS	VOLUME CUBIC FEET	FIGURE NUMBER
							2710 Series

ASSEMBLY DRAWING



- NOTES:**
- Numbers designated thus are regularly furnished parts.
 - ⬡ Numbers designated thus are variations/options and must be specified.

* Quantities are per section.

NO.	DESCRIPTION	QU.*	NO.	DESCRIPTION	QU.*
①	Flanged Body (Specify)	1	⑧	Flashing Flange	4
②	Grate	1	⑨	5/16(8)-18 x 3/4(19) Bolt with Washer	8
③	Flanged End Plates	2	⑩	Body Veneer	1
④	5/16(8)-18 x 1 3/4(44) Bolts/Nuts & Washer	8	⑪	5/16(8)-18 x 3/4(19) Bolt with Washer	4
⑤	Hub (Specify Size)	1	⑫	Grate Veneer	1
⑥	Gasket	1	⑬	10-24 x 7/16(11) Flat Head Screws	5
⑦	5/16(8)-18 x 1 1/4(32) Bolt & Washer	4	⑭	Apply Permatex #2 Seal to each end of each body section	2

DRAWING NUMBER: S2710BS
 SIZE: A
 SCALE: NONE
 DATE: 3-26-90
 APPROVED BY: TD
 CHECKED BY: BS
 DRAWN BY: EMB
 2710 Assembly Drawing
 DIMENSIONS ARE SUBJECT TO MANUFACTURERS TOLERANCE AND CHANGE WITHOUT NOTICE

D 4-9-08 C 11-5-97 B 6-19-95 A 3-91	Revised Callouts Revised Dwg & Callouts Added Millimeters Added Flange & Boss	TBW EMB EMB EMB	AM BS BS JCS	WEIGHT POUNDS	VOLUME CUBIC FEET	FIGURE NUMBER 2710 Assembly Drawing
REV.	DATE	DESCRIPTION	BY	CKD. BY		