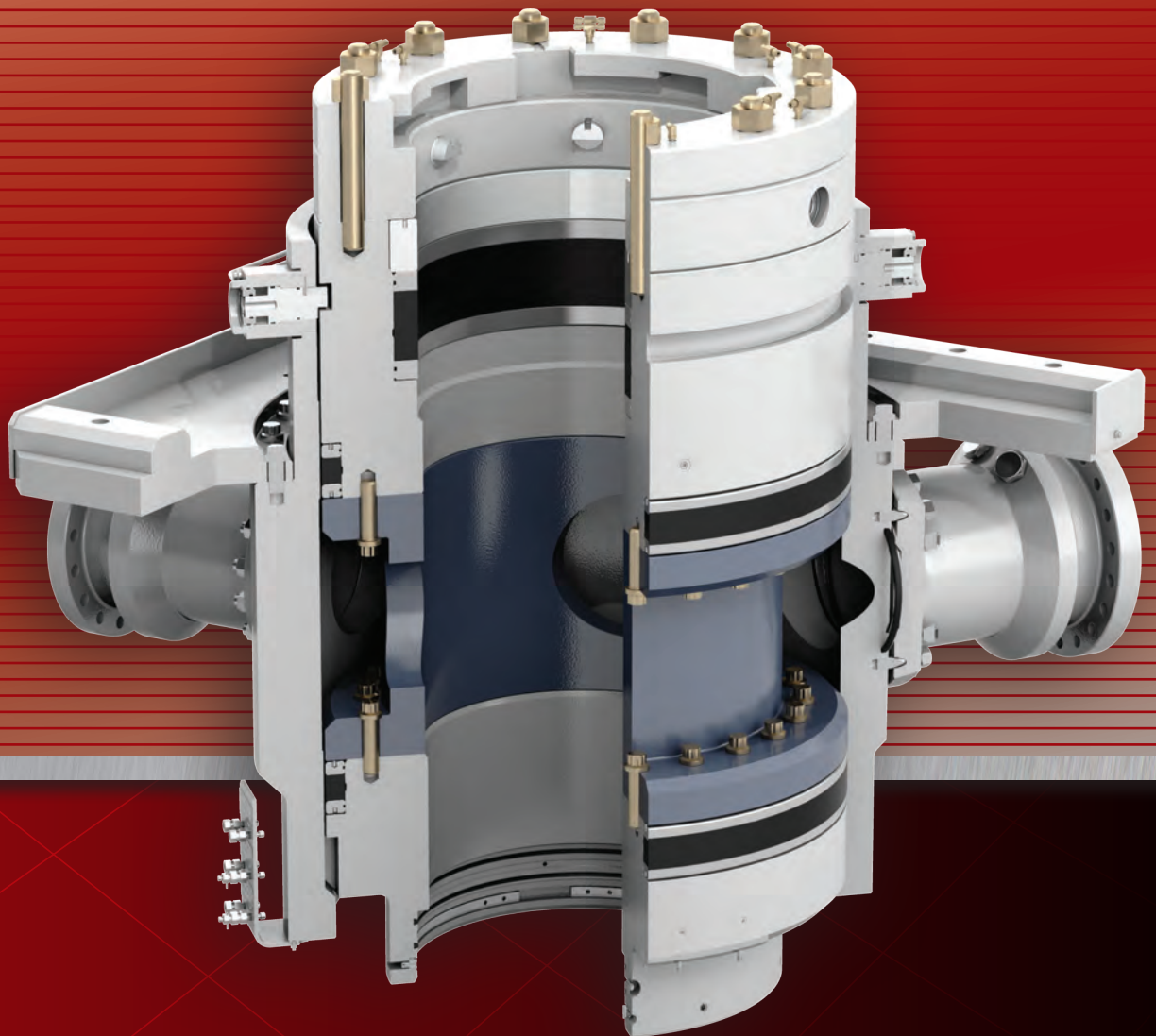


CF Diverter Product Line

Diverter solutions for jackups and floaters

TECHNOLOGY



The CF-A and CF-B diverter systems are both fully customizable and consist of the following components:

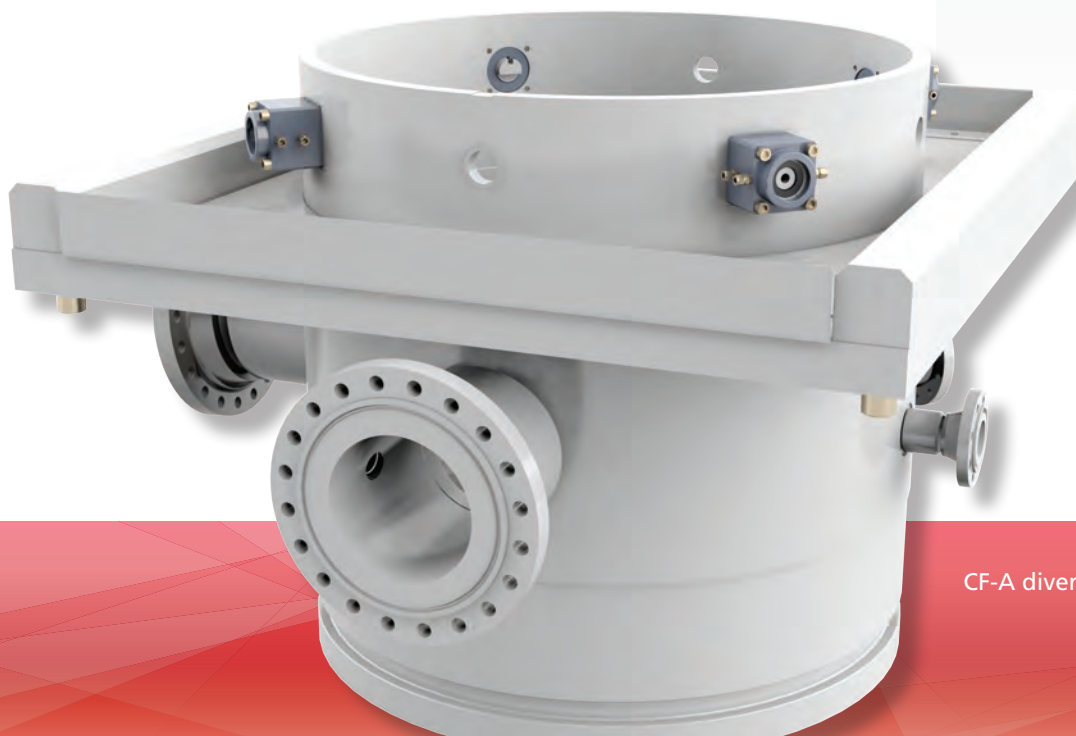
- Housing
- Outlet Valves
- Running Tools
- Controls System
- Diverter Assembly
- Overshot Packers
- Storage Skids

While the CF-A and CF-B are fundamentally different, both products share key features such as:

- A landing shoulder and retractable lock-down dogs in the diverter housing allow for easy running and retrieval of diverter assembly
- Corrosion-resistant alloys are applied to flowline sealing surfaces in the diverter housing and all ring gasket grooves
- Cofferdams and 4" NPT drain holes to collect drilling fluid/mud
- Zero fabrication welds
- Housing outlets equipped with washout ports

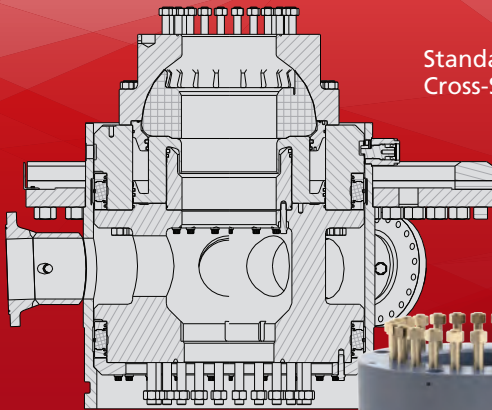


CF-B Diverter
and Overshot
Mandrel for
Jack Up Rigs



CF-A diverter housing

CF-A



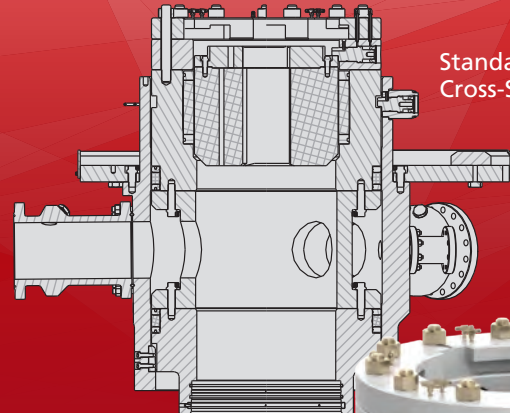
Standard CF-A Cross-Section

CF-A Style Diverter



CF-A Style Diverter Running and Test Tool

CF-B



Standard CF-B Cross-Section

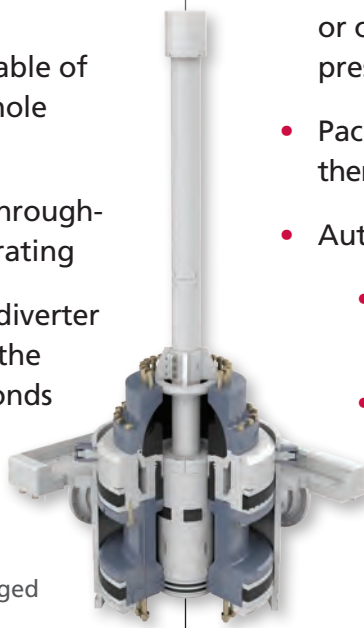
CF-B Style Diverter



- Housings available for 60.5", 75.5" and 78" rotary tables with hang-off capacities of up to 2.5 million pounds*
- Single annular packing element capable of sealing around any size pipe in the hole or itself
- Diverter Assembly, 21.25" nominal through-bore diameter and 500 psi pressure rating
- The primary closing function of the diverter can operate the flowlines and close the annular packer within forty five seconds of operation

- Housings available for 49.5" rotary table*
- Insert packers for virtually every size pipe or casing available with 500 psi or 1000 psi pressure ratings
- Packers can be split and hinged to allow them to be changed out with pipe in the hole
- Automatically engaged hydraulic stabs
 - Diverter Assembly, 29.5" nominal through-bore diameter
 - J-slot type running tools are entirely mechanical (no hydraulics required)

CF-A Style Diverter with the Running and Test Tool Engaged



* Housing can be customized to fit all industry standard rotary tables

4601 Westway Park Blvd
Houston, TX 77041
USA
Tel 1 281 606 6000

Learn more about diverters at:

www.c-a-m.com or email drillinginfo@c-a-m.com.



HSE Policy Statement

At Cameron, we are committed ethically, financially and personally to a working environment where no one gets hurt and nothing gets harmed.