

***NOTEBOOK PC
DRIVERS & UTILITIES***

***INSTALLATION & USER'S GUIDE
(WINDOWS 98)***

User's Notice (Support CD)

No part of this manual, including the products and software described in it, may be reproduced, transmitted, transcribed, stored in a retrieval system, or translated into any language in any form or by any means, except documentation kept by the purchaser for backup purposes, without the express written permission of ASUSTeK COMPUTER INC. ("ASUS").

ASUS PROVIDES THIS MANUAL "AS IS" WITHOUT WARRANTY OF ANY KIND, EITHER EXPRESS OR IMPLIED, INCLUDING BUT NOT LIMITED TO THE IMPLIED WARRANTIES OR CONDITIONS OF MERCHANTABILITY OR FITNESS FOR A PARTICULAR PURPOSE. IN NO EVENT SHALL ASUS, ITS DIRECTORS, OFFICERS, EMPLOYEES OR AGENTS BE LIABLE FOR ANY INDIRECT, SPECIAL, INCIDENTAL, OR CONSEQUENTIAL DAMAGES (INCLUDING DAMAGES FOR LOSS OF PROFITS, LOSS OF BUSINESS, LOSS OF USE OR DATA, INTERRUPTION OF BUSINESS AND THE LIKE), EVEN IF ASUS HAS BEEN ADVISED OF THE POSSIBILITY OF SUCH DAMAGES ARISING FROM ANY DEFECT OR ERROR IN THIS MANUAL OR PRODUCT.

Products and corporate names appearing in this manual may or may not be registered trademarks or copyrights of their respective companies, and are used only for identification or explanation and to the owners' benefit, without intent to infringe.

- Windows and MS-DOS are registered trademarks of Microsoft Corporation.
- Adobe and Acrobat are registered trademarks of Adobe Systems Incorporated.
- ALPS is registered trademark of Alps Electric Co., Ltd.
- GlidePoint is registered trademarks of Cirque Corporation.
- IBM, IBM PC are registered trademarks of International Business Machines Corporation.
- Microsoft Windows is registered trademark of Microsoft Corporation.

SPECIFICATIONS AND INFORMATION CONTAINED IN THIS MANUAL ARE FURNISHED FOR INFORMATIONAL USE ONLY, AND ARE SUBJECT TO CHANGE AT ANY TIME WITHOUT NOTICE, AND SHOULD NOT BE CONSTRUED AS A COMMITMENT BY ASUS. ASUS ASSUMES NO RESPONSIBILITY OR LIABILITY FOR ANY ERRORS OR INACCURACIES THAT MAY APPEAR IN THIS MANUAL, INCLUDING THE PRODUCTS AND SOFTWARE DESCRIBED IN IT.

Copyright © 1998 ASUSTeK COMPUTER INC. All Rights Reserved.

Product Name:	Support CD
Manual Revision:	1.00 E312/E314
Release Date:	December 1998

Contents

User's Notice (Support CD)	2
Using New Hard Disk Drives	4
Flashing the BIOS	6
New Operating System	7
Microsoft Windows 98	7
Support CD for Windows 98	8
YAMAHA Audio	9
YAMAHA Software (optional)	11
VGA Driver	13
Setting the Display	15
Control Panel	17
Lynx Display Properties	18
TouchPad	19
Fast IR Driver	21
PC-cillin	23
Other Support CD Options	24
Alps Mouse Utility	25

Using New Hard Disk Drives

When you purchase a new hard disk drive, there will not be any partitions on it unless it was pre-configured for your Notebook PC by your dealer. Partitions are necessary for a hard disk drive to accept data. Booting to Windows requires that the active partition be within the maximum of 2GB, therefore at least two partitions are necessary for the standard hard disk drive of 3GB. With two partitions, you will see drive letters “C:\>” and “D:\>”. Because the Suspend-to-Disk partition is not user-accessible, it does not have a drive letter. Each additional partition will create another drive letter and the built-in CD-ROM will then add its own drive letter to the end.

NOTE: Formatting will not be allowed on non-partitioned hard disk drives and formatting hard disk drives will not remove partitions.

Creating a Bootable Diskette

A bootable system diskette is necessary to enter the command prompt when there are no active system partition on your hard disk drive. To create a bootable floppy diskette, type “FORMAT A:/S” from the DOS prompt or use Window’s format (from “My Computer”) and check “Copy system files.” You must copy FDISK.EXE and other DOS utilities from the “C:\WINDOWS\COMMAND” directory of Windows 95 or 98. Do not include AUTOEXEC.BAT or CONFIG.SYS system files on the boot disk because some utilities cannot be used with memory managers usually loaded through the AUTOEXEC.BAT and CONFIG.SYS system files.

Creating a Suspend-to-Disk Partition

If you wish to use the Suspend-to-Disk utility any time in the future, you must have a Suspend-to-Disk partition. The Suspend-to-Disk partition must be created before other partitions are used because the other partitions will be removed. If you decide in the future that you do not want the Suspend-to-Disk partition, the Suspend-to-Disk partition may be removed using FDISK.EXE without affecting other partitions. The Suspend-to-Disk partition will occupy its own space on the hard disk drive that cannot be used for other purposes. The “Suspend-to-Disk” function requires the “Power Management” mode to be configured for this function in the BIOS setup.

1. Boot from a system diskette with the “PHDISK.EXE” utility.
2. Type “PHDISK/CREATE 165000” then press [Enter].

Using New Hard Disk Drives (Cont')

The option "165000" is to tell PHDISK.EXE to create a 165,000 byte partition. The reason why 165MB is required is so that the Notebook PC maximum memory size of 160Mbytes can be supported. The 165MB Suspend-to-Disk partition on the hard disk drive guarantees that all of the data in the memory can be stored on this partition regardless of your memory upgrades. If you do not specify "165000," PHDISK.EXE will create a partition which is a slightly larger than the system's current memory size. Future memory upgrades will not allow the use of the Suspend-to-Disk without recreating the Suspend-to-Disk partition. The problem is that the PHDISK.EXE utility will remove all other partitions when used.

Using the FDISK.EXE Utility

The FDISK.EXE utility can add or remove partitions on a hard disk drive. This utility is only required if the hard disk drive is new and has never been formatted or used (remember the ability to format a hard disk drive means that there is at least one partition). You do not need to use this utility after formatting a hard disk drive. Be careful not to remove existing partitions that you may need, you will not be able to recover it!

1. Boot from a system diskette with the "FDISK.EXE" utility.
2. Type "FDISK" from the "A:\>" prompt, then press [Enter].
3. Create a primary partition and set it active by following the on-screen menu, and also create extended partitions if needed.

Formatting the Hard Disk Drive

Formatting a hard disk drive actually only erases all the data on one partition. In order to erase data on other partitions, you must specify those drive letters when using the format utility. The /S command will place system files on the partition to allow bootup. Type "FORMAT /?" for a list of other options.

1. Boot from a system diskette with the "FORMAT.COM" utility.
2. Type "FORMAT C: /S" from the "A:\>" prompt then press [Enter].
3. Type "Y", then press [Enter] to confirm format.
4. Enter a Volume label, or press [Enter] to leave blank.

Flashing the BIOS

The BIOS contains information for the Notebook PC's hardware. Newer versions of the BIOS may include new features and bug fixes. New bug fixes will include all previous fixes so only the newest version is needed. Each BIOS image file is customized for a specific product and model. Do not try to use a BIOS image file that was not intended for your Notebook PC. With the wrong BIOS, your Notebook PC may not bootup and will require servicing. Use the utility "PHLASH.EXE" (pronounced "flash") to update (or "flash") your Notebook PC's BIOS. NOTE: Any user-defined changes in the BIOS configuration will be lost. Write down specific settings that you made in the BIOS setup before using this utility.

1. Boot from a system diskette with the "PHLASH" utility, PLATFORM.BIN, and BIOS image (e.g. ls-0103a) files. (If downloading from the internet, you will have to UNZIP the files to the diskette.)
2. Type "phlash/mode=3 ls-0103a" (use the name of your new BIOS image file) and press [ENTER].
3. The PHLASH utility will automatically update the BIOS. When the BIOS has been successfully programmed, you will be asked to press any key to restart the system. If the system does not restart, power OFF the Notebook PC and then turn ON the power.
4. Assuming that you have successfully flashed the BIOS, press [F2] on system bootup to enter the BIOS setup. Select the "Load Setup Defaults" on the "Exit" menu and then [Enter]. Go back to the other menus if you require BIOS configuration changes (previous BIOS settings will be lost after updating the BIOS). Then select "Exit Saving Changes" to exit the BIOS setup. If the screen resolution has changed after you restart the Notebook PC, change your "Screen area" to **1024 by 768** pixels and "Colors" to **High Color (16 bit)** through **Settings** in "Display Properties".

New Operating System

CD-ROM Support Under MS-DOS

When installing an operating system on an empty hard disk drive, a DOS real-mode CD-ROM driver needs to be loaded in the CONFIG.SYS and AUTOEXEC.BAT files in order to use the CD-ROM drive. The floppy disk drive can be used without any device drivers. PCMCIA cards are not recommended under DOS but, if necessary, you may consult your PCMCIA card documentation or dealer for configuration under the DOS environment. The CD-ROM device driver should be pre-configured from the factory as follows (because hardware and software are constantly improved or customized for a particular market, the examples in the software section may not exactly reflect your Notebook PC).

CONFIG.SYS: DEVICE=C:\CDROMDRV.SYS /D:0EMCD001

AUTOEXEC.BAT: MSCDEX.EXE /D:OEMCD001 /L:D

Microsoft Windows 98

Microsoft Windows 98 may be pre-installed on your Notebook PC. If installation or configuration changes are necessary, please refer to the documentation provided with the Windows 98 operating system. Once Windows 98 is running, you should use the Windows 98 CD-ROM device driver instead of the DOS real-mode CD-ROM driver. A DOS driver has poor performance, poor memory management, and may cause conflicts with other devices.

Removing the DOS real-mode CD-ROM driver

Removing the device line or adding “REM” (upper or lower case) in front of the line will disable the DOS driver and allow Windows 98 to use its own CD-ROM device driver. Windows 98 may already add the letters “REM” in front of the DOS CD-ROM drivers in AUTOEXEC.BAT such as:

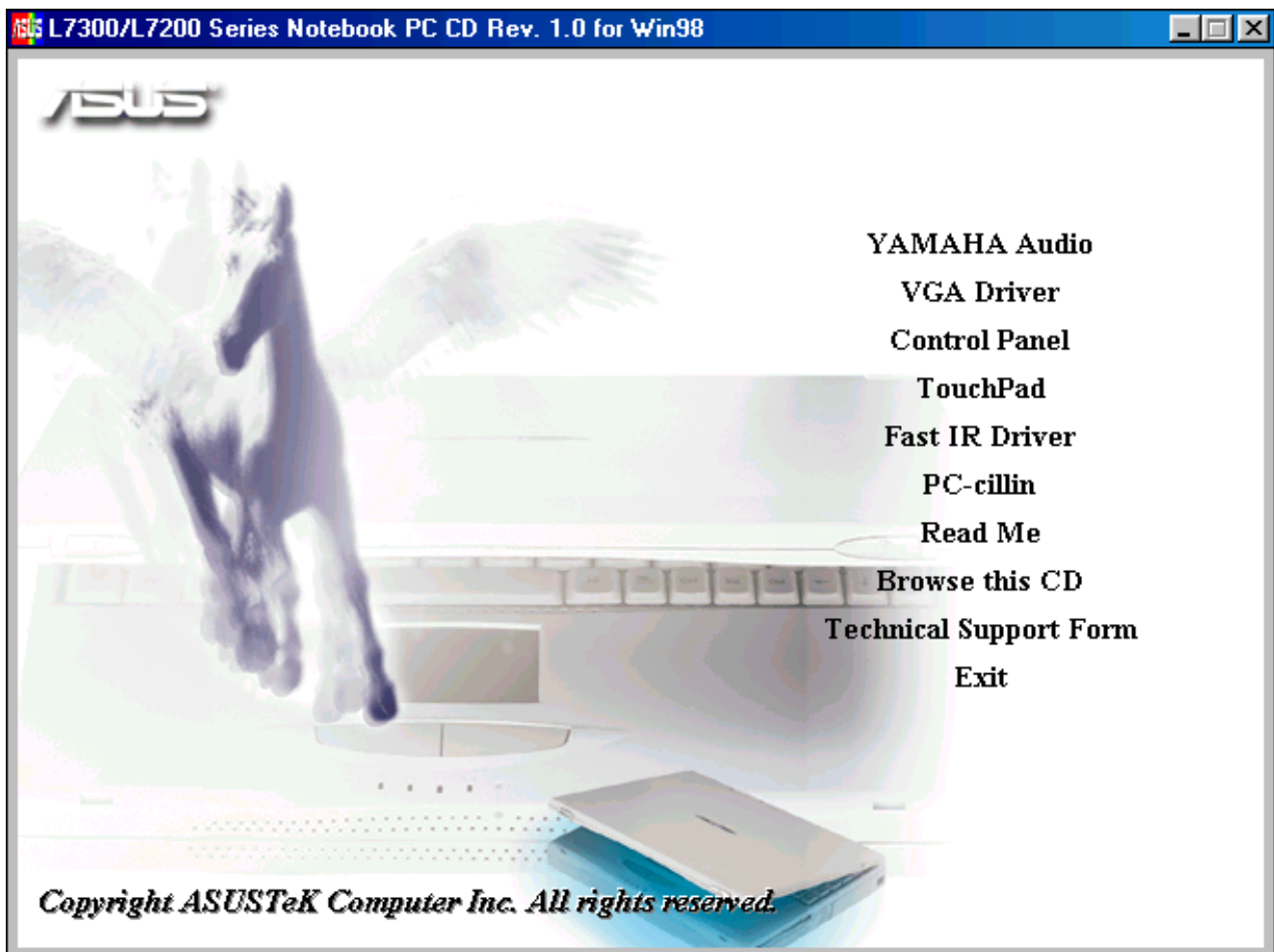
CONFIG.SYS: rem - By Windows Setup - DEVICE=C:\CDROMDRV.SYS /D:0EMCD001

AUTOEXEC.BAT: rem - By Windows Setup - MSCDEX.EXE /D:OEMCD001 /L:D

If running Windows 98 setup, it will automatically check for real-mode drivers and guide you using a wizard to remove undetected ones. If these two lines exist and do not have “REM” in front, add them yourself by opening the files with NOTEPAD.EXE provided by Windows or EDIT.COM provide by DOS or you may simply delete these two lines.

Support CD for Windows 98

The support CD included with the Notebook PC provides all the necessary drivers and utilities in order for you to use your Notebook PC. The following pages will give step-by-step installation procedures for typical system configurations. For application usage, please see the on-line help provided with each of the applications after installation. The following is what you will see when you insert the support CD. If the autorun menu does not appear, double clicking the CD-ROM disc drive icon (the letter (E:) drive on hard disk drives with two partitions) or running SETUP.EXE located in the root of the support CD, will bring up the autorun menu.



YAMAHA Audio

This is necessary in order for your operating system to have the correct audio drivers for your Notebook PC's built-in audio. Windows 98 cannot contain all the device drivers from every manufacture, with every update; therefore the provided support CD will contain the best driver for your built-in audio. You may skip this software if your audio drivers were pre-configured at the time of purchase.

Installation Procedure

1. Insert the support CD. (You may exit the autorun screen.)
2. Right-click on **My Computer** icon and choose **Properties**.
3. Click the **Device Manager** tab.
4. Under **Sound, video and game controllers**, select **Gameport Joystick**. (Click the plus sign or double click a component heading to expand the component items.)
5. Click **Remove**, and then click **OK**.
6. Double-click **YAMAHA OPL3-SAX WDM Driver**, and then click **Properties**.



YAMAHA Audio (Cont')

7. Select the **Driver** tab and click **Update Driver**.



8. Click **Next** to search for updated drivers.



9. Click **Next** again to let Windows search for you.



10. Select **Specify a location** and type in the CD path: **E:\AUDIO\WIN98**.



11. Click **Finish**, and then click **Close** twice to exit.



YAMAHA Software (optional)

The YAMAHA YSTATION32 software, which consists of CD, MIDI, WAVE and MIX players, is included on your support CD and supports the following languages: English, French, German, Japanese, Italian, Spanish, Danish, Dutch, Finnish, Norwegian, Swedish, Traditional Chinese, Simplified Chinese, and Brazilian Portuguese.

Installation Procedure

1. Insert the support CD.
2. Click **Browse this CD** from the autorun menu.
3. Double-click the **Audio** and the **Appli** folders.
4. Double-click **SETUP.EXE** in the “Appli” folder.
5. Click **Next** on the “Welcome” screen.
6. Click **Typical** on the “Setup Options” screen.
7. Click **Next** (or **Browse** to change the destination directory) on the “Choose Destination Location” screen.
8. Click **Yes** to create a new directory or to replace an existing directory.
9. Click **Next** to allow changes to your AUTOEXE.BAT file. Your original file will be saved to another name.
10. Click **OK** on the “Information” window.



YAMAHA Software (Cont’)

11. Click **Next** to allow changes to your DOSSTART.BAT file. Your original file will be saved to another name.

12. Click **OK** on the “Information” window.

13. Wait while files are copied to your computer.

14. After copying is finished, click **Next** to create a program folder.

15. Click **OK** to exit the installation program.

You may run the YSTATION32 from the newly created program folder but future Windows sessions require you to run it through **Start | Programs | Accessories | Yamaha | YSTATION32**.

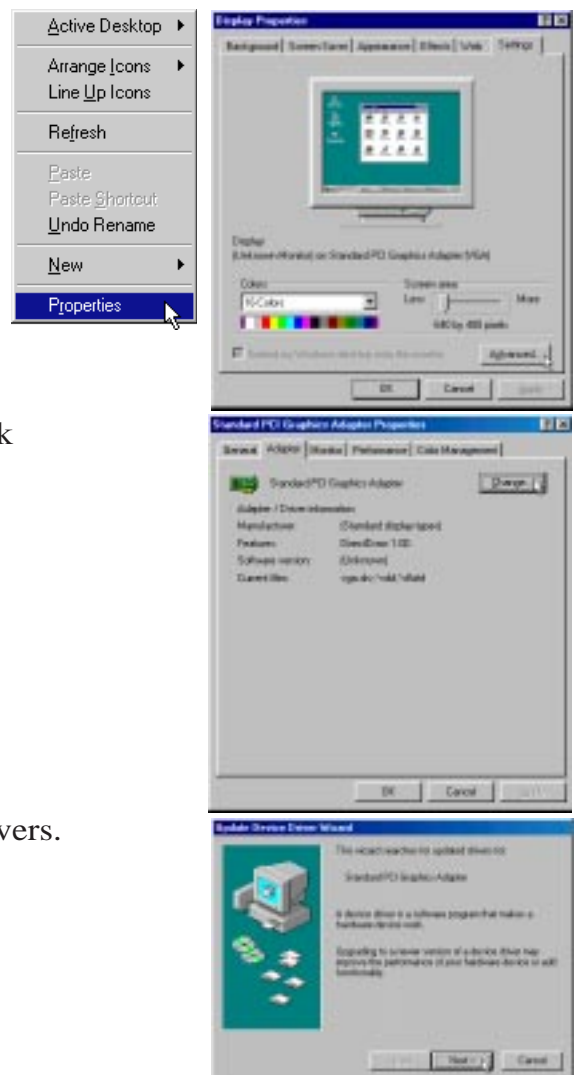


VGA Driver

This is necessary in order for your operating system to have the correct video drivers for your Notebook PC's built-in graphics. Windows 98 cannot contain all the device drivers from every manufacturer, with every update; therefore the provided support CD will contain the best driver for your built-in graphics.

Installation Procedure

1. Insert the support CD. (You may exit the autorun screen.)
2. Right-click on the desktop and select **Properties**, then click the **Settings** tab, and the **Advanced** button.
3. Click the **Adapter** tab, and then click **Change**.
4. Click **Next** to search for updated drivers.



VGA Driver (Cont')

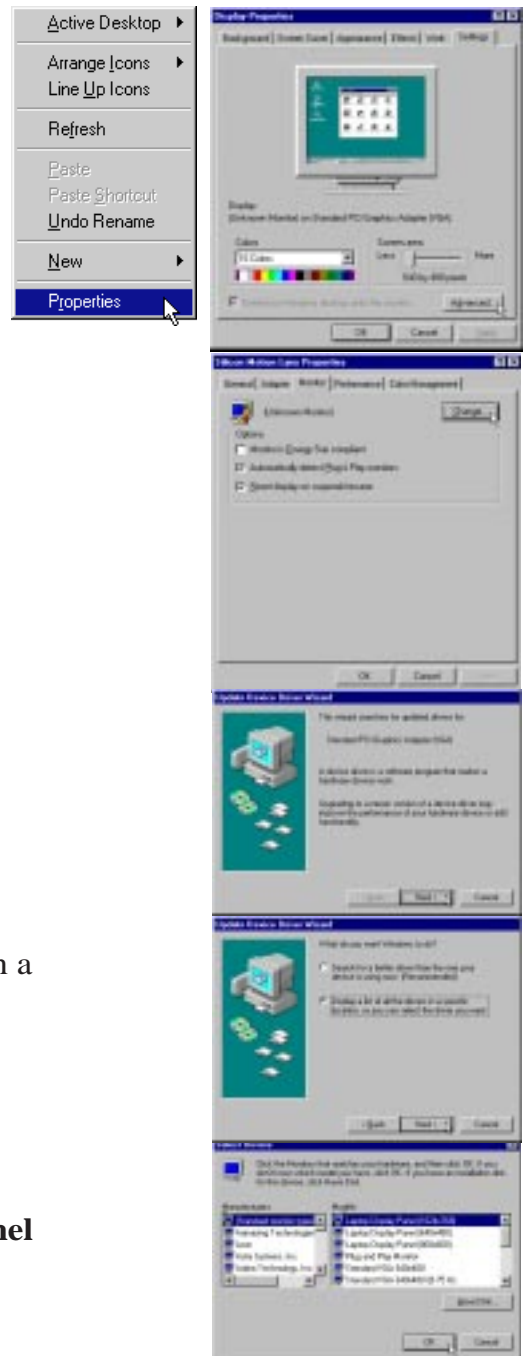
5. Click **Next** again to let Windows search for you.
6. Select **Specify a location** and type in the CD path: **E:\VGA\WIN98**.
7. Click **Next** when you see “Windows driver file search for the device”
8. You may be asked for the location of the driver again.
9. Enter the location of the driver in the support CD: **E:\VGA\WIN98** and then click OK.
10. Click **Finish**, and then click **Yes** to restart Windows.



Setting the Display

Procedure

1. Insert the support CD. (You may exit the autorun screen.)
2. Right-click on the desktop and click **Properties**.
3. Click **Settings, Advanced**, and then click the **Monitor** tab.
4. Click **Change**.
5. Click **Next** when “This wizard searches for updated drivers for:” is displayed.
6. Select “Display a list of all the drivers in a specific location, so you can select the driver you want.”, then click **Next**.
7. Select (**Standard monitor types**) from **Manufacturers** and **Laptop Display Panel (1024x768)** from **Models**.



Control Panel

The Silicon Motion Control Programs is a utility that provides DualView and DualApp support for your Notebook PC. See the description on the next page.

Installation Procedure

1. Insert the support CD.
2. Click **Control Panel** on the support CD.
3. Click **Next** on the Welcome screen.
4. Click **Next** to accept the default program folder or choose another.
5. Click **Finish** when you see the “Setup Complete” notice.
6. If you restart Windows, an **SMI** icon will appear on the task bar each time Windows starts. You may also run the **Control Program** manually through **Start - Programs - Silicon Motion Control Programs**.



Windows Task Bar



Control Panel (Cont')

Double-clicking on the SMI icon or **right-clicking the desktop** and choosing **Properties** will give you the Display Properties screen. The Display Properties screen is a standard feature in Windows but a **Lynx** tab will be added to the standard tabs.

Lynx Display Properties

Display Properties

Background | Screen Saver | Appearance | Effects

Web | **Lynx** | Settings

SMI Chip Information..... Lynx, 4 MB
 LCD Panel..... TFT, 1024 X 768
 Control Program..... Version 3. 2. 0, 1998-11-10
 Display Driver..... Version 2. 2. 0, 1998-11-23

Display Switching:
 LCD: ON OFF
 CRT: ON OFF
 TV: ON OFF NTSC PAL

Special Modes:
 DualApp: ON OFF
 DualView: ON OFF
 Stretch: ON OFF

Hot Key:
 Enable Hot Key Hot Key Settings...

OK Cancel Apply

Turns Notebook PC display panel ON or OFF

Turns Dual Application ON or OFF

Enables or Disables Hot-Key Switching

Lynx Tab

Graphics and Display Information

(not used)

Turns external display ON or OFF

(not used)

Turns Dual View ON or OFF

See/Edit Hot-Keys

Dual Application (DualApp): Allows you to simultaneously display one application on the Notebook PC and another application on an external monitor.

Dual View: Allows you to simultaneously view your Notebook PC display and a portion of your screen up to the entire screen for display on an external monitor.

Hot Key Settings...

Display Switching:
 To LCD: None
 To CRT: Ctrl + Alt + C
 To TV: Ctrl + Alt + T
 To LCD+CRT: Ctrl + Alt + S
 To LCD+TV: Ctrl + Alt + V

Special Modes:
 DualApp: Set DualApp: Ctrl + Alt + A
 Swap Applications: Ctrl + Alt + W
 Swap Display: Ctrl + Shift + W

Set DualView:
 Set DualView: Ctrl + Alt + V
 Set Switch: Ctrl + Alt + R
 Turn-off special mode: Ctrl + Shift + Z

OK Cancel

TouchPad

The system BIOS fully supports keyboard and PS/2 mouse devices that are built-in or connected to the Notebook PC externally. The Notebook PC's integrated TouchPad pointing device is fully compatible with the two-button PS/2 mouse. However, the provided device driver will provide enhancements to the touchpad when working with some applications. For detailed information on these enhancements, please see the Alps Mouse Utility section later in this manual.

Installation Procedure

1. Insert the support CD. (You may exit the autorun screen.)
2. Right-click on the **My Computer** icon and choose **Properties**.
3. Click the **Device Manager** tab.
4. Under **Mouse**, double-click the current device. (Click the plus sign or double click a component heading to expand the component items.)
5. Click the **Driver** tab, and then click **Update Driver**.



TouchPad (Cont’)

6. Click **Next** to search for updated drivers.

7. Click **Next** again to let Windows search for you.

8. Select **Specify a location** if necessary and type in the CD path:
E:\TOUCHPAD\WIN98.

9. Click **Next** when you see “Windows driver file search for the device”

10. Click **Finish**, and then click **Close** twice to exit.



Fast IR Driver (Cont’)

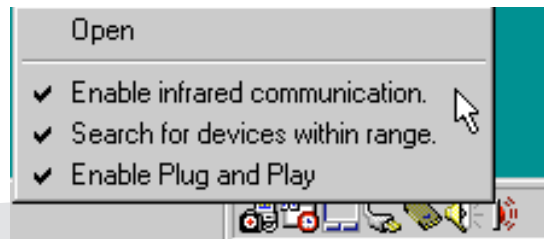
After your computer is restarted:

- 10. Right-click the **Network** icon on the desktop.
- 11. Double-click **Winbond Infrared Controller (PIO)** and click the **Advanced** tab.



- 12. Change the Infrared Transceiver “Value” to **IBM**, then click **OK** twice.
- 13. Click **Yes** to restart your computer.

To use the the infrared port for wireless communication, right click the infrared icon on the task bar and place check marks beside each option to enable the infrared port.



PC-cillin

As software become more and more a part of our daily lives, measures have to be taken to protect them. When you invest in this Notebook PC, a very important anti-virus software is included on the support CD. Follow the procedure below to install this software and use the on-line help if you have any questions. You may skip this software if you have your own anti-virus software.

Installation Procedure

1. Click **PC-cillin** on the autorun menu.
2. Click **Next** on the Welcome screen.
3. Wait while your setup checks your system.
4. Type in your name and company (optional), and then click **Next** on the “Registration” screen.
5. Click **Next** or choose another destination directory on the “Choose Destination Location” screen.



PC-cillin (Cont’)

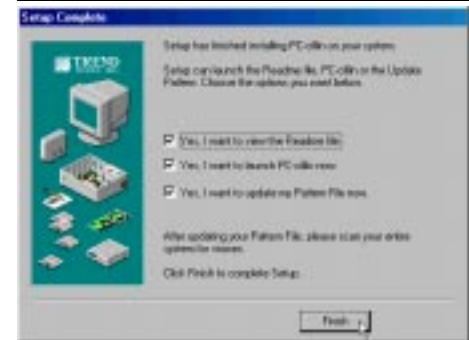
6. Click **Next** for Express Install on the “Choose Setup Type” screen.



7. Click **Start** to create a Bootable Emergency Clean Disk. Otherwise, click **Skip** on the “Create Emergency Clean Disk” screen.



8. Click **Finish** on the “Setup Complete” screen to exit the installation program.



Other Support CD Options

Read Me: View notes concerning this support CD or the Notebook PC.

Browse this CD: Allows you to see the contents of this support CD.

Technical Support Form: View the technical support form which is required when asking for technical support.

Exit: Closes the autorun menu.

NOTEBOOK PC ALPS MOUSE UTILITY

Section Overview

The Alps Mouse Utility is installed from the autorun by clicking “TouchPad”. Alps is a pointing device driver and utility for Windows systems that can be used on the Notebook PC. The Alps Mouse Utility can be used with the built-in Touchpad pointing device as well as any externally connected PS/2 pointing devices.

USER'S MANUAL

Contents

Section Overview	25
Changing the Settings	28
Mouse Properties	28
Buttons	28
Functions assigned to buttons	29
Double Click Speed	29
Use Wheel Function	29
Options	29
Options (Cont')	30
Scroll Speed	30
Scroll Area	30
Tray Icon	30
Mouse Compatibility Mode	30
Motion	31
Acceleration	31
Speed	31
Pointer Trail	32
Orientation	32
Orientation Settings	32
Auto Jumps	33
Tapping	34
Tapping	35
Tapping Speed	35
Drag Lock Settings	35
Typing	35

Contents (Cont')

Gesture	36
Corner Tap Functions	36
Use Scroll Function	36
Option	36
Sound Feedback	37
Easy Launcher	38
Application button(s)	38
Easy Launcher Properties	39
Shortcut List	39
New	39
Delete	39
Change	39
Up/Down	40
Option	40
General controls	43
OK	43
Cancel	43
Apply	43
Default	43
Version Information	43
Frequently Asked Questions (FAQ)	44

Changing the Settings

Mouse Properties

Mouse Properties is an easy to use application software to change the settings for pointing devices. The original Windows property sheets for the mouse (found in the control panel) were either added to or replaced when the Touchpad driver was installed.

NOTE: The Pointers sheet is the same as the Windows standard mouse properties. If any functions cannot be used, the corresponding tab will not be displayed.

Buttons

Use this feature to adjust the button settings



A preset function can be assigned to each button. The picture of the device varies according to the device which the driver detects. The third picture is for “Both Buttons” on your Notebook PC Touchpad or a two button mouse, the “Central Button” for the middle button on a 3 button mouse, and the “Wheel Button” for a mouse with a wheel.

NOTE: The Internal Pointing Device in the Advanced Menu of the BIOS Setup Utility must be set to [Disabled] to allow detection of a wheel mouse by the Mouse Utility. If left [Enabled] the Notebook PC will treat all externally connected pointing devices as a standard 2 or 3 button mouse.

Changing the Settings (Cont')

Functions assigned to buttons

The following are functions that can be assigned to the mouse buttons.

- None
- Click
- Shortcut Menu
- Auto Scroll
- Double Click
- Easy Launcher

Double Click Speed

Double Click Speed allows the user to vary the time period between clicks in order for Windows system to register a double click. The user can test their own settings by double clicking in the test window. When a double click is registered, the dolphin jumps through the hoop.

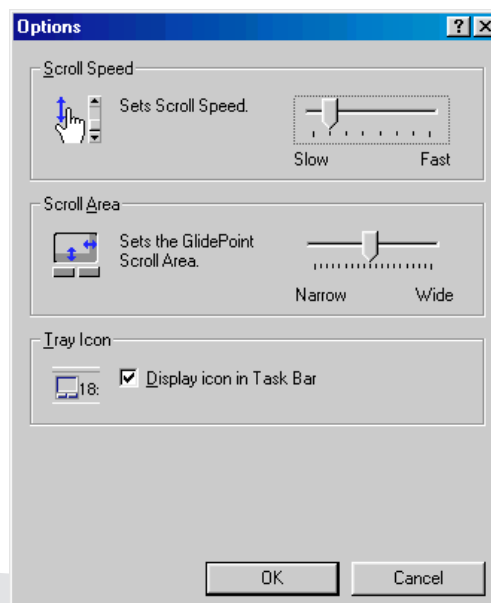
Use Wheel Function

Check this if you want to use the wheel feature. This check box is displayed only when a wheel mouse is used on your Notebook PC in place of your Touchpad.

NOTE: The Internal Pointing Device in the Advanced Menu of the BIOS Setup Utility must be set to [Disabled] to allow detection of a wheel mouse by the Mouse Utility. If left [Enabled] the Notebook PC will treat all externally connected pointing devices as a standard 2 or 3 button mouse.

Options

You can change scrolling related values and other options on this sheet.



Options (Cont')

Scroll Speed

This allows you to change the scrolling speed of your pointing device with the scrolling function.

NOTE: The Internal Pointing Device in the Advanced Menu of the BIOS Setup Utility must be set to [Disabled] to allow detection of a wheel mouse by the Mouse Utility. If left [Enabled] the Notebook PC will treat all externally connected pointing devices as a standard 2 or 3 button mouse.

Scroll Area

Change the width of the scrolling area for the Touchpad.

NOTE: The Internal Pointing Device in the Advanced Menu of the BIOS Setup Utility must be set to [Disabled] to allow detection of a wheel mouse by the Mouse Utility. If left [Enabled] the Notebook PC will treat all externally connected pointing devices as a standard 2 or 3 button mouse.

Tray Icon

Check this to display the tray icon on the task bar. Part of this Tray icon will change color when you touch the scrolling area. Also, you can display a menu by right-clicking the icon. Double-clicking the icon brings up the Mouse Properties.



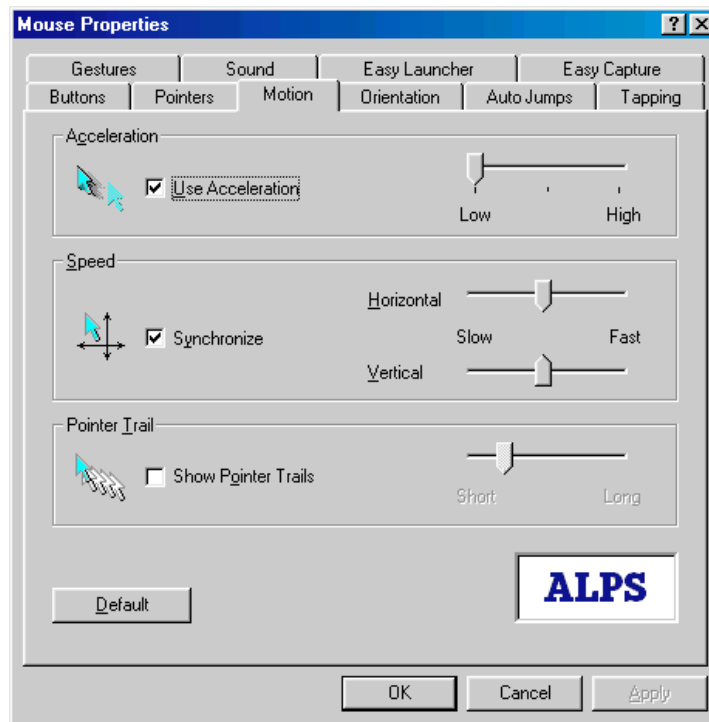
Mouse Compatibility Mode

Use this feature when the external mouse does not work. When this mode is enabled, you cannot use the extended functions of the Touchpad.

NOTE: This feature is displayed only when you are using an old-format mouse.

Motion

Use this feature to adjust the motion of the mouse pointer.



Acceleration

Acceleration allows the cursor to cover more area if the mouse is moved quickly. The check box will enable or disable acceleration. If acceleration is enabled, you can choose Low, Medium, or High acceleration using the track bar.

Speed

Sensitivity defines how Windows scales the distance moved by the mouse and the distance moved on the screen. Low Sensitivity settings can enable the user to position the cursor more precisely, setting a high sensitivity results in a broader cursor coverage on the screen with relatively small movements of the pointing device. The check box enables the user to lock or unlock the horizontal and vertical sensitivity trackbars together. The trackbars allow the user to vary the sensitivity for both horizontal and vertical directions.

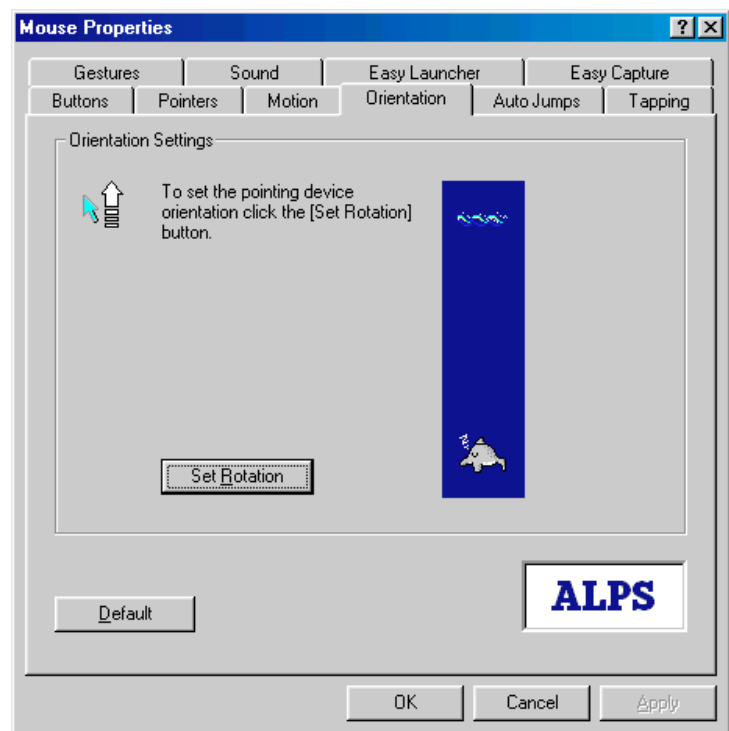
Motion (Cont')

Pointer Trail

This feature makes it easier for the user to keep track of the location of the cursor on screen. It does this by leaving ghost cursors, which slowly disappear whenever the mouse is moved. This leaves a very noticeable trail on the screen when the cursor moves. The check box will enable or disable the trails and the trackbar can vary the number of ghost cursors trailing the main cursor.

Orientation

Use this feature to adjust the rotation of the mouse pointer.



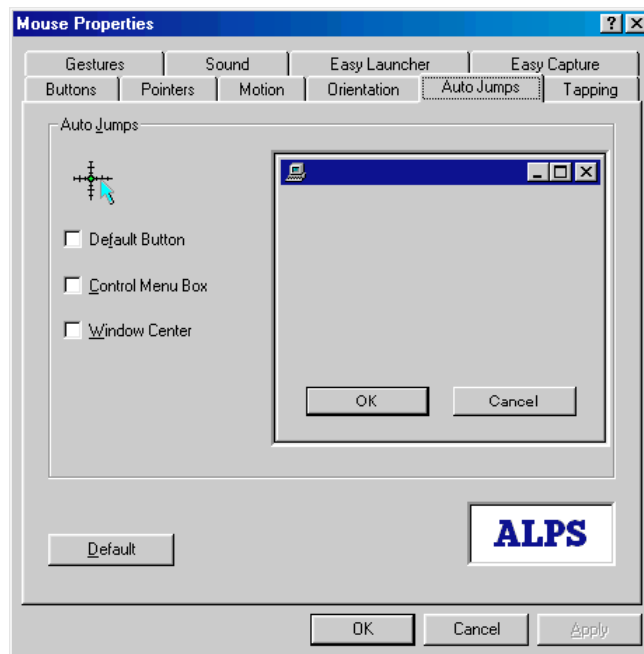
Orientation Settings

This feature is beneficial when the user finds it more efficient to hold or place the pointing device at an angle. Click the **Set Rotation** button, when the message “Move the dolphin to the surface to set the orientation” appears, move the pointing device in the direction the user wants to represent as the upward movement on the screen. Based on this new upward direction, the on-screen cursor will, from now on, move relative to this new orientation.

Motion (Cont')

Auto Jumps

Use this feature to automatically jump to a specified point.



Auto Jumps moves the cursor to a specified area of a window every time one is opened. There are currently three different positions that the cursor can jump to with this function.

1. Default Button
2. Control Menu Box (top right hand corner of the Window)
3. Center of the Window

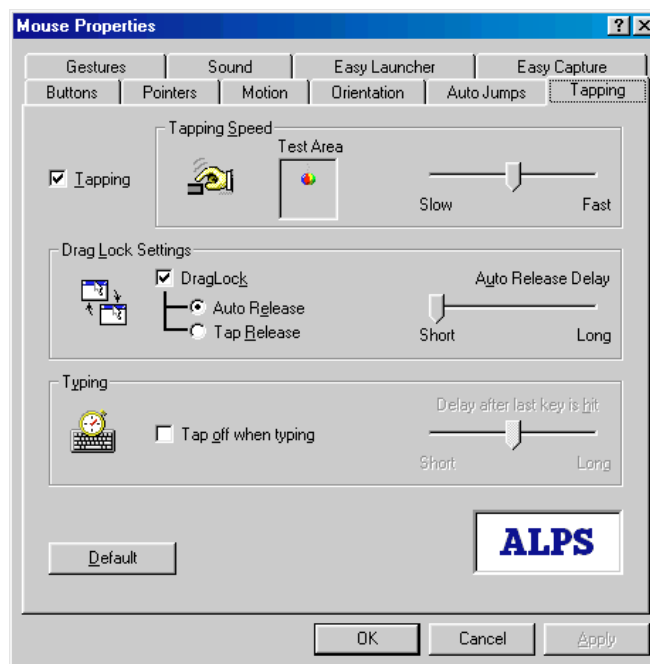
Orientation (Cont’)

In the case where a specific control does not exist (e.g. no default button) The cursor remains in it’s current position. The user can however select multiple locations and in this case a priority system is used. For example, if default push button and system menu box are selected and a window which contains no default push button is opened then the cursor jumps to the system menu box if it is present. If not, the cursor remains in it’s current location. The dialog bitmap to the right of the check boxes show the location of the current auto Jumps and their associated priorities - one being the highest, three being the lowest.

NOTE: This feature only moves a cursor to specific position; it does not make click event. This feature may not work on some application.

Tapping

Use this feature to adjust the tap settings.



NOTE: Tapping tab appears only when a Touchpad having tapping setup functions is used. When the Tapping property sheet is not displayed, this function cannot be used with your pointing device.

Tapping (Cont')

Tapping

When Tapping is enabled, you can simulate a mouse click by simply pressing on the surface of the pointing device. It is set whether to use the Tapping function. When the Tapping function is used, the Tapping check box is turned on. When the Tapping is not used, the Tapping check box is turned off. **NOTE:** If this feature is disabled, Drag Lock Setting, Tapping Speed, and Typing will also be disabled.

Tapping Speed

Moving the Tapping Speed track bar to the left results in a simulated mouse click to slower tapping. Moving it to the right results in a simulated mouse click to faster tapping. By tapping in the test box, you can test the current tapping speed. The animation in the box begins to move when done from the value to which the Tapping is set fast. The animation does not change when it is slower than setting.

Drag Lock Settings

Drag Lock

It is a function that keeps the state of dragging even if the finger is separated from the operation side after drags by the Tapping. When the drag lock function is used, the drag lock check box is turned on. **NOTE:** When the drag lock check box is disabled, the Auto Release cannot be set.

Auto Release

The Drag Lock will release the cursor after a specified period of time, which starts when the user raises his or her finger from the surface of the Touchpad. This time period can be defined by the user via the Auto Release Delay track bar, just to the right of the auto release radio button.

Tap Release

When the Tap Release is chosen, the drag lock will be released by clicking a left mouse button mouse or tapping.

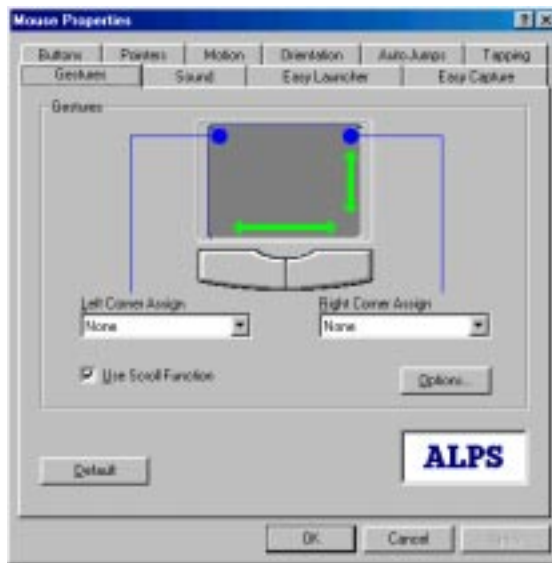
Typing

Tap off when typing

With this option selected, you can not tap while typing on the keyboard. This feature will benefit users in preventing inadvertent tapping while creating a document on a word processor. When typing is interrupted, tapping becomes acceptable. This time period can be defined by the user via the "Delay after last key is hit" track bar.

Gesture

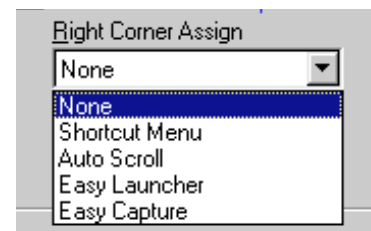
Use this feature to adjust the Gesture settings.



Corner Tap Functions

Left Corner Assign/Right Corner Assign

You can assign a function to the corner tap of the Touchpad. Click the Left Corner Assign or Right Corner Assign drop down list and a menu of available options will appear.



Use Scroll Function

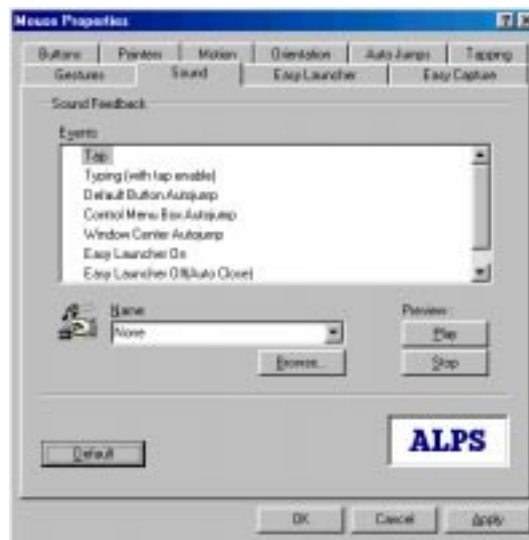
Check this if you want to use the scrolling function. When this feature is enabled, you can scroll by sliding your finger on the edge of Touchpad instead of moving the cursor onto the scroll bar. Also, you can use Zoom and Data Zoom by pressing the “Ctrl” key or “Shift” key while sliding you finger on the Touchpad.

Option

Opens “Options” dialog box. In this dialog, you can change scrolling parameter, tray icon status, and mouse compatibility mode. You can also open this dialog box from the “Gesture” tab.

Sound Feedback

Sound Feedback enhances the many features of the mouse by giving the user easily discernible feedback on the operation of the pointing device. Users can assign specific sound files (WAV format) to the various pointing device operations. When audible feedback occurs, users can recognize the execution of the specific pointing device operation. Users can customize the Sound Feedback settings by using Sound property sheet.



Events

The operation to which the sound is allocated is displayed. The speaker is displayed to show that the sound is set.

Name

The sound set in the operation is displayed. Click the down arrow on the name cell to see a list of the allocated sounds.

Browse

It is possible to refer to the sound of an arbitrary folder. It is possible to refer to other folders when the sound is not displayed in the sound name cell.

Preview: Play

Plays the sound that the sound is displayed in the name cell.

Preview: Stop

Stops the sound preview.

Easy Launcher

Easy Launcher is an utility program which allows you to easily operate the Windows system. Users can execute an arbitrary application program by clicking icon buttons which are located in the popup window. To start the Easy Launcher, set the Easy Launcher to Left or Right Corner Assign, then tap the corner.

The following windows open when the Easy Launcher is started.



After installation Easy Launcher has four default icon buttons which consist of the minimize button, the closed button, the start button and the Close Easy Launcher button.

Minimize button

When users click this button, the currently activated window is minimized.

Close button

When users click this button, the currently activated window is closed.

Start button

When users click this button, the Windows start menu is displayed on the task bar.

Close Easy Launcher button

When users click this button, the Easy Launcher is closed.

NOTE: The Easy Launcher can also be closed by clicking the close window button or pressing the Esc key on the keyboard.

Application button(s)

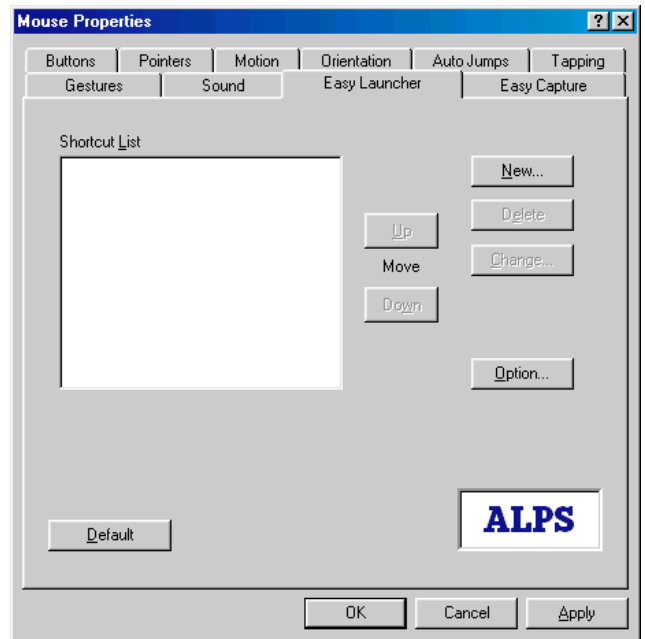
Application button(s) appear when the short cuts are added in the Easy Launcher. When users click the application button(s), the application associated with that icon can be started. The application is added/deleted form Alps Pointing Device Driver property sheet.

Use this feature to adjust the Easy Launcher settings.

Easy Launcher (Cont')

Easy Launcher Properties

Use this feature to adjust the Easy Launcher settings.



Shortcut List

The application program registered in the Easy Launcher is displayed. The application icon can be added to the Easy Launcher when drag and dropping to the short cut list from desktop and the Explorer.

New

The application program is added to the Easy Launcher.

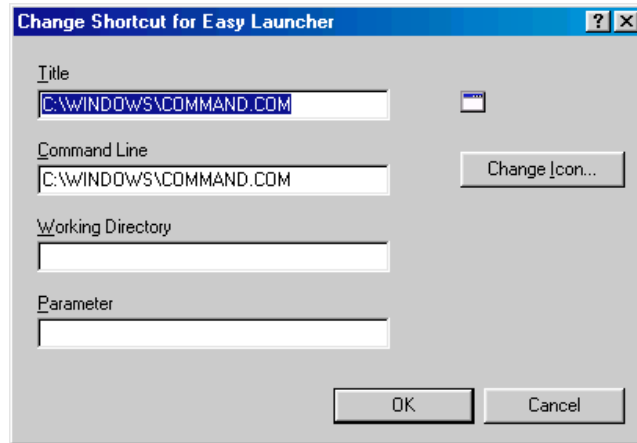
Delete

The application program is deleted from the Easy Launcher.

Change

The Change Shortcut for Easy Launcher dialog box is opened, and setting the application program can be changed.

Easy Launcher (Cont')



Up/Down

The arrangement of the application button displayed in the Easy Launcher is changed.

Option

The option dialog box opens, and the Easy Launcher can be customized.

Windows style

The window style of the Easy Launcher is selected from Standard, Vertical or Horizontal.

Windows location

The window location of the Easy Launcher is selected from Display center, Pointer position or Previous position.

Icon-button size

The icon size of the Easy Launcher is selected from Standard buttons, Small buttons or Large buttons.

Enable Auto close

The Easy Launcher window is automatically closed after a fixed time when this check box is turned on.

Show Title Bar

The display/non-display of the title bar is switched.

Use Tool Hint

The display/non-display of the tool hint is switched.

Only Application Shortcut

If this box is checked, the start menu button, the close button and the minimize buttons are hidden.

Enable Auto Grid

When the Easy Launcher opens, the mouse of each icon is moved when this box is checked.

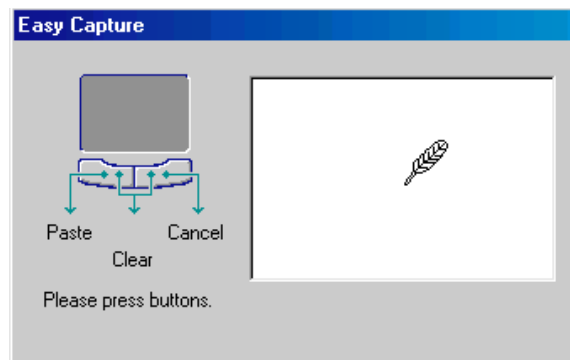
Use Close Easy Launcher button

When this check box is turned off, the button which Close Easy Launcher button becomes non-display.

Easy Capture

The Easy Capture is a utility program which enables the user to draw a picture and paste them into an active application without the need of starting the Paint Brush or similar application.

To start Easy Capture, set the Easy Launcher to Left or Right Corner Assignment, then tap the corner. If 3 button mode is set, it is also possible to start with one of the mouse buttons. Starting Easy Capture will open an Easy Capture window which is described below. With this window, you can draw a picture or character and then paste them into an application.



NOTE: Easy capture only support images and may not display other forms of data.

To paste a picture on Easy Capture window in an application

Click on the left button of Touchpad.

To clear a picture on Easy Capture window

Click on both the right and left buttons of Touchpad simultaneously.

To cancel Easy Capture window

Click on the right button of the Touchpad, or press the Esc key on the keyboard.

The Easy Capture property sheet allows changing the color, the size of the pen, and the size of the canvas.



Canvas size

Select the canvas size to be used in Easy Capture: Large, Medium and Small.

Width (Pen Style)

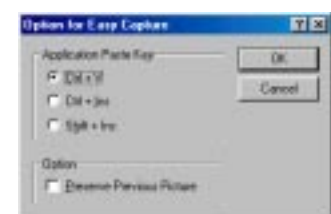
Select the width of the line to be used from the list.

Color (Pen Style)

Select the line color to be used from the list.

Option

The Option for Easy Capture dialog box opens when this button is clicked. In the option dialog box, the Application Paste Key and the Preserve Previous Picture is set. When Easy Capture cannot paste to the application program, change the Application Paste Key.



General controls

OK

Click the OK button to close the Mouse Properties and save any changes which you have made.

Cancel

Click the Cancel button to close the Mouse Properties without saving any changes which you have made.

Apply

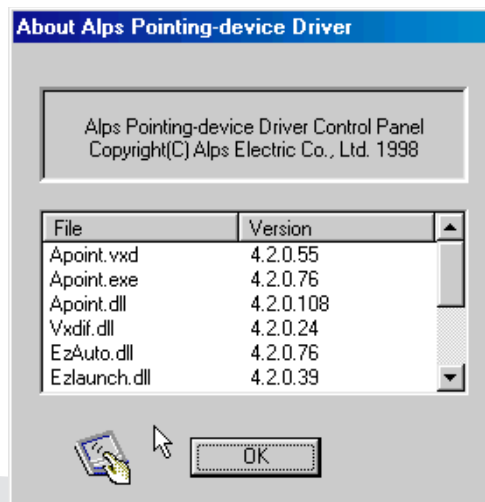
Click the Apply button to save the changes which you have made without closing the Mouse Properties .

Default

Click the Default button to return the current settings to the initial default values.

Version Information

You can find version of Alps Pointing Device Driver files. To display the About dialog box, click “ALPS” logo on any Mouse Properties sheet to see “About Alps Pointing-device Driver”.



Frequently Asked Questions (FAQ)

Here we will list frequently ask questions about Alps Pointing Device Driver.

- Q1.** How do I use the Windows standard mouse driver instead of the Alps Pointing Device Driver.
- A1.** See “To add or change a device driver for hardware” under Windows help files.
- Q2.** How do I use Tapping?
- A2.** Open Tapping property page, and then select the Tapping check box.
- Q3.** I cannot see the Alps Pointing Device Driver Properties.
- A3.** Restart your Notebook PC. If you connected an external PS/2 mouse, disconnect it from your Notebook PC.
- Q4.** I cannot popup the Easy Launcher and the Easy Capture.
- A4.** If an external mouse is connected, disconnect it. Please confirm whether the Easy Launcher or Easy Capture is set to the corner tap by the Gesture property sheet.