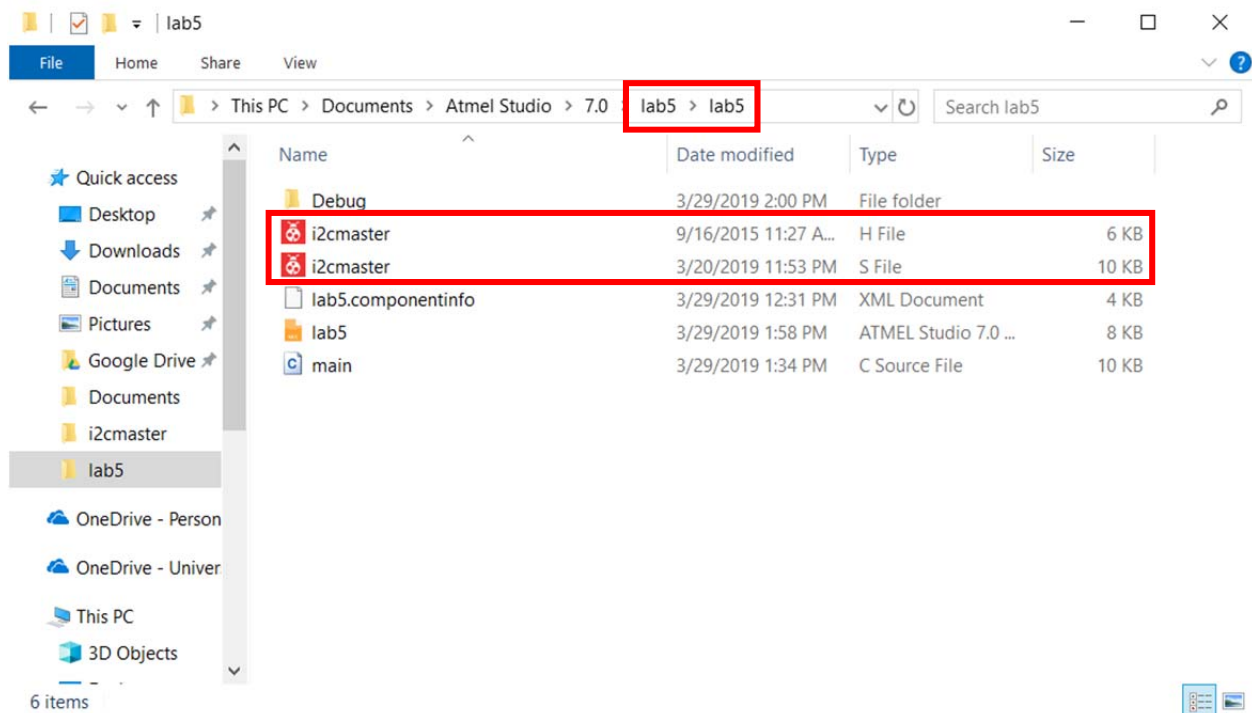


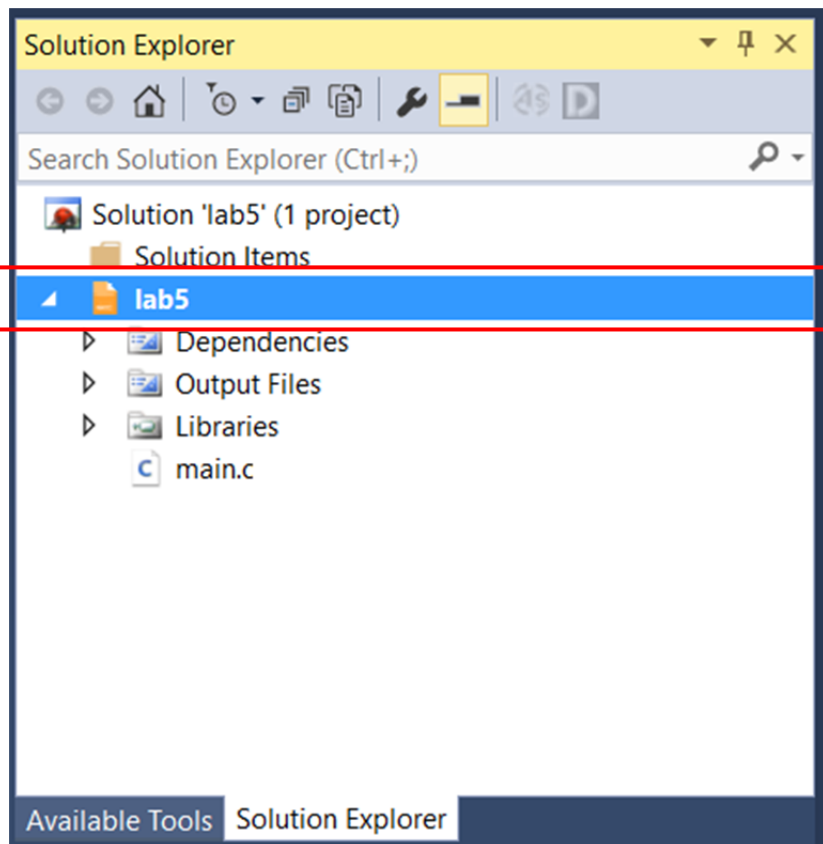
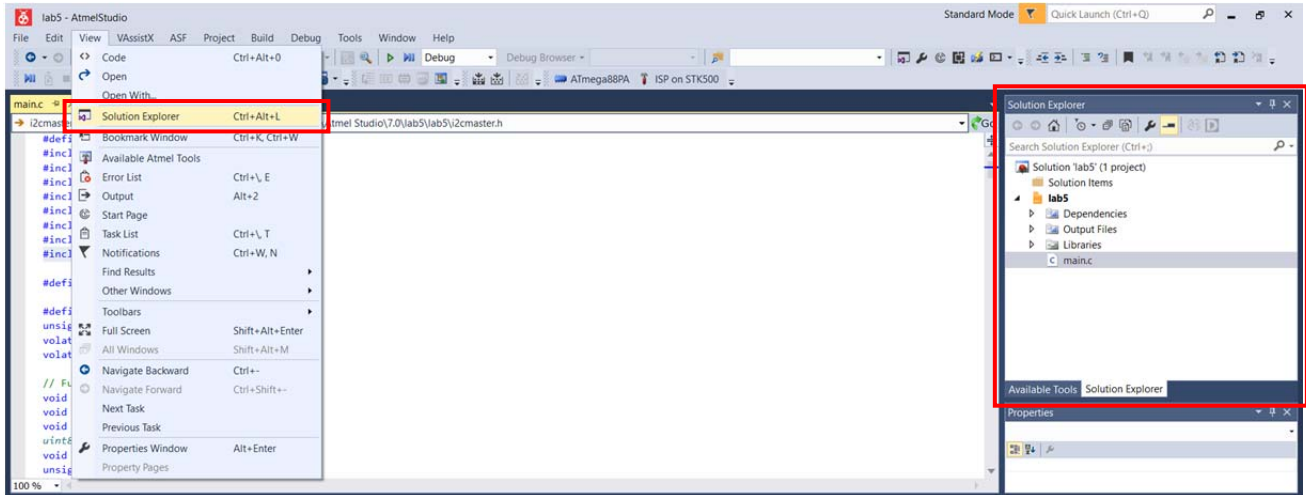
Instructions for Adding an I2C Library to an AVR C Project

This example demonstrates how to add files from Peter Fleury's I2C (TWI) Master Software Library to an AVR C project.

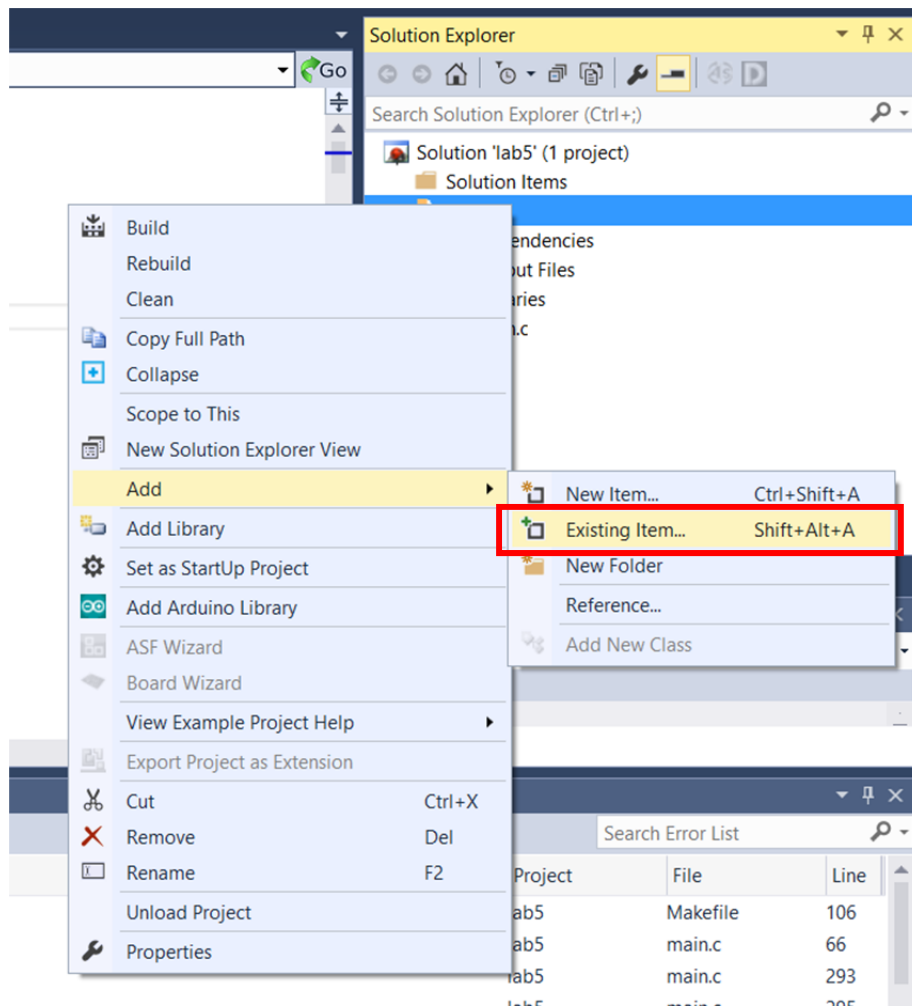
1) Add i2cmaster.S and i2cmaster.h to the same folder as your main.c file



2) Open the solution explorer and right click on the ATMEL project file (orange icon)



3) Click on Add > Existing Item...



4) Add i2cmaster.S

