

ETHERNET MANUAL

Ethernet Node Configuration for Series 2 Digital Panel Meters, Counters, Timers, Transmitters and Ethernet-to-Serial Device Servers.



LAUREL Electronics Inc.

3183-G Airway Ave, Costa Mesa, CA, 92626, USA

Tel: (714) 434-6131 Fax: (714) 434-3766 Website: www.laurels.com

1. TABLE OF CONTENTS

1.	TABLE OF CONTENTS	2
2.	APPLICABILITY	3
3.	ETHERNET PRIMER & DEFINITIONS	4
4.	JUMPER SETTINGS & FIELD WIRING	6
5.	NETWORK CONFIGURATION EXAMPLES	13
6.	HOW TO SET UP NODES USING NODE MANAGER PC SOFTWARE.....	16
7.	HOW TO SET UP NODES USING THEIR BUILT-IN WEB SERVER	29
8.	HOW TO SET UP DEVICES USING INSTRUMENT SETUP SOFTWARE	41
9.	WARRANTY	44

2. APPLICABILITY

This Manual applies to 1/8 DIN size Laureate digital panel meters, counters and timers with an Ethernet communication board, and to LTE Series DIN-rail Ethernet transmitters. The Ethernet Nodes in this manual are as follows:

- **LNET Ethernet board.** Plugs into a host 1/8 DIN digital panel meter, counter or timer. Provides an RJ45 connector for a 10/100BaseT Ethernet interface. Before using this board with your meter, verify that the meter is a “Series 2” meter. The host meter can be ordered with a choice of displays, signal conditioner boards, relay output boards, and analog output boards.
- **LNET485 Ethernet-to-serial converter board.** Plugs into a host 1/8 DIN digital panel meter, counter or timer. Provides an RJ45 connector for a 10/100BaseT Ethernet interface plus an RJ11 connector to serve as a device server for up to 31 meters on an RS485 bus. RS485 wiring is via commercial straight-through 6-wire data cables with RJ11 connectors. The host meter can be ordered with a choice of displays, signal conditioner boards, relay output boards, and analog output boards.
- **LTE Series Ethernet transmitters.** These DIN-rail mounted instruments provide an RJ45 connector for a 10/100BaseT Ethernet interface, plus a 4-20 mA, 0-20 mA or 0-10V isolated analog output and two 120 mA AC/DC solid state relays. The transmitters accept the same signal conditioner boards as our 1/8 DIN size digital panel meters, counters and timers. The Ethernet circuitry is on the transmitter main board. Power over Ethernet (PoE) operation is jumper selectable with the low voltage power option.

Ethernet Nodes and instruments attached to an LNET485 Node via RS485 can be accessed over a LAN or a WAN once the Nodes have been configured by our Instrument Setup Software (see Section 9), our Node Manager Software (see Section 7), or our Web Server firmware (see Section 8), which is built into our Nodes. Once communications have been established, the instruments associated with each Node can be set up using our Instrument Setup Software, for example to scale the input and define setpoints for relay operation. Custom software can also be written by users as described at the end of this manual.

Instruments from other manufacturers can be operated on an RS485 bus interfaced to our LNET485 Ethernet-to-serial converter board if the host computer uses the Modbus TCP protocol and commands are issued suitable for these instruments.

3. ETHERNET PRIMER & DEFINITIONS

An Ethernet node is an Ethernet connection point. Node (with a capital “N”) refers to our Ethernet nodes. These run special firmware, which allows them to be discovered and configured using built-in Web Server Software or PC-resident Node Manager Software. Configuration data is stored in flash memory of the Node.

An Ethernet-to-serial converter board in a meter can interface the Ethernet to multiple meters and transmitters on an RS485 bus.

Node Manager Software is a Windows-based application that runs on a host PC and can be used to find and configure Nodes. It is free and can be downloaded from our website. It automatically discovers all Nodes on a LAN or WAN, plus any devices connected to Server Nodes via an RS485 bus. It configures each Node by setting up communication parameters, naming the Node and associated devices, entering email addresses for alarm notification and data requests, selecting the Node’s time zone for time-stamping of emails and streaming data, and upgrading the Node’s firmware. Once the configuration data has been stored in flash memory of all Nodes, Node Manager Software can be closed.

Instrument Setup Software is a Window-based application that runs on a host PC and is primarily used to set up the operation of each meter and transmitter. It is free and can be downloaded from our website. This includes scaling for display and analog output, setting relay operation modes, and setting setpoints for relay operation. It includes the components of Node Manager Software that allow it to automatically discover all Nodes on a LAN or WAN, plus any devices connected to Server Nodes via an RS485 bus.

Web Server capability is built into each Node’s firmware to allow the Node to perform most of the same functions as Node Manager Software (but not upgrading the Node’s firmware). A PC with a browser interface is required, such as Internet Explorer. Once a Node is attached to a LAN, the router that controls the LAN will assign a unique IP address to the Node (such as 192.168.0.19). Entering that IP address as a URL into the browser will open the website and discover all other Nodes on the LAN.

A MAC address is an identifier assigned to each Node at our factory for permanent identification. That address is 6 bytes long and is unique in the world.

An IP address (e.g., 192.168.0.19) is used to address Ethernet nodes on a LAN or WAN. An IP address can be Static and Public so that it can be addressed on a WAN. An IP address can also be dynamic as assigned by a router or by another DHCP for addressing the same LAN. Dynamic IP addresses on a LAN are also called private or local IP addresses.

Port numbers are associated with each software application and serve as passwords for two-way packet transmissions. Default port numbers assigned to our Nodes are TCP port **502** for Modbus TCP transmissions, UDP port **63179** for UDP transmissions, and TCP port **80** for web server http:// transmissions.

A router is a device that bridges two networks and forwards data packets to their destinations on a LAN based on their IP addresses and port number. Normally a router will use its built-in DHCP server capability, and network devices will use their built-in DHCP client capability, to negotiate private (or local) IP addresses for all devices on the LAN.

A switch is a device that filters and forwards data packets between segments in the same network.

DHCP server capability is built into all of our Nodes. When a Node fails to find a DHCP server that responds to its request for a private IP address, it assigns one. When several Nodes fail to receive a Private IP address, they mutually agree to make one of the Nodes a temporary DHCP server that assigns a Private IP address to each device on the network. Built-in DHCP server capability allows Nodes to constitute themselves into a network and be connected directly to a host computer when no router or dedicated DHCP server is present. The time for Nodes to decide that there is no dedicated DHCP server is about 25 seconds. The Nodes are intelligent enough that when another DHCP server comes online, the temporary DHCP server Node relinquishes its unique status and seamlessly becomes a client network device.

On a Local Area Network (LAN) where the host computer is part of the network, our Nodes are discovered by our Instrument Setup Software or by Node Manager Software, which then lists the Nodes' MAC address and private IP address. When one of the discovered Nodes is selected, all of the active devices on that Node are discovered, and the following information is listed for each device: device name, address, type, revision, signal conditioner, protocol, communication settings, and reading format.

On a Wide Area Network (WAN), such as the Internet, the host computer is outside of the LAN and therefore must know the public IP address of the LAN router to discover the Nodes on the LAN.

Emails with device readings and alarm status can be sent to a computer or to a smart phone in the form of text messages when devices on a Node encounter an alarm condition, go on- or off-line, or at selected intervals. Emails containing device readings can also be sent from the Node in response to email requests. Each Node can be configured with an email account, recipient email addresses, and notification intervals. Emails can be sent as text messages to any smart phone to notify plant operators of alarm conditions wherever they are.

Communication protocols supported by our Nodes are **Modbus RTU**, **Modbus ASCII**, **Custom ASCII** (a simpler protocol than Modbus), and **Modbus TCP** for Ethernet communications. When used with an LNET485 Ethernet-to-serial device server Node, Modbus TCP is seamlessly converted by the Node to Modbus RTU or Modbus ASCII for communication with meters and transmitters on an RS485 bus.

4. JUMPER SETTINGS & FIELD WIRING

1. Safety Warnings

Warning: Use of a device in a manner other than specified may impair the protection of the device and subject the user to a hazard. Visually inspect the unit for signs of damage. If the unit is damaged, do not attempt to operate it.

Caution:

Our meters and transmitters may be powered with AC (mains) from 85-264 Vac with the high voltage power supply option, or from 12-32 Vac or 10-48 Vdc with the low voltage power supply option. Verify that the proper power option is installed for the power to be used. These products have no AC (mains) switch. They will be in operation as soon as power is connected.

- The 85-264 Vac or 95-300 Vdc (mains) connector is colored Green to differentiate it from other input and output connectors. The 12-32 Vac or 10-48 Vdc connector is colored Black.
- For safety reasons, do not make signal wiring changes or connections when power is applied to an instrument. Make signal connections before power is applied. If reconnection is required, disconnect the AC (mains) power before such wiring is attempted.
- To prevent electrical or fire hazard, do not expose the instrument to excessive moisture or temperature.
- Do not operate the instrument in the presence of flammable gases or fumes, as such an environment constitutes an explosion hazard.
- Meters are designed to be mounted in a metal panel. Verify the panel cutout dimensions, and mount according to instructions.
- LTE transmitters are designed to be clipped to a 35 mm DIN rail.

Symbols Used



Caution (refer to accompanying documents)



Caution, risk of electric shock.



Equipment protected throughout by double insulation or reinforced insulation.



Both direct and alternating current.



Earth ground terminal.



Signal ground terminal.

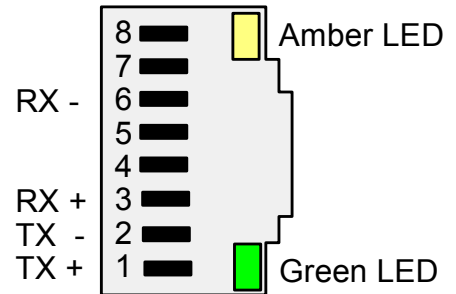
Operating Environment:

Our meters and transmitters are Class II (double insulated) equipment designed for use in Pollution degree 2.

2. Hardware Overview

The **Ethernet connector** for all of our Nodes is provided by an RJ45 jack, Green and amber LEDs on the jack indicate network operation:

- 1) Following power-up, the green and amber LEDs are on steady until an IP address has been assigned to the Node.
- 2) Once an IP address has been assigned to the Node, the amber LED is turned off. It will light up whenever the Node detects data packet activity.
- 3) When the Node has made a TCP connection, the green LED alternates on (1 sec) and off (1 sec), while the amber LED is on steady.



Ethernet Indicators

Ethernet cables (CAT5 or better) can be straight-through or crossover. Our Nodes automatically adapt for either.

An LNET option board is used in our Ethernet panel meters and counters. This board has an RJ45 jack for direct connection to a computer, router, switch or hub via an Ethernet cable.

An LNET485 option board is used in our Ethernet-to-serial device server meters. This board has an RJ45 jack to the Ethernet plus an RJ11 jack which supports up to 31 remote meters on an RS485 bus. The remote meters must be equipped with our **L485** RS485 serial communication board with dual RJ11 jacks. These allow the remote meters to be daisy-chained using readily-available, straight-through, 6-wire data cables with no need for hand-wiring or an RS485 hub.

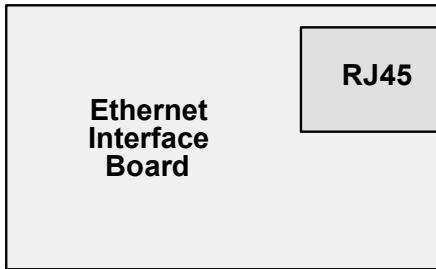
LTE Series Ethernet transmitters feature an RJ45 jack for the Ethernet in lieu of the 6 screw terminals that would otherwise be standard for RS232 and RS485 with our transmitters.

Half or full duplex RS485 communications (2 data wires + ground or 4 data wires + ground) can be selected via jumpers on our LNET485 Ethernet-to-serial converter board and on the devices on the RS485 bus. If the RS485 bus is implemented with screw terminals, half-duplex selection can also be made by shorting ATX to ARX and BTX to BRX at the screw terminals. Shorting these wires at the connector is electrically equivalent to using jumpers on the board.

RS485 Termination Resistors should be inserted via jumpers on the server end and on the last device on an RS485 line longer than 200 feet (60 m). Do not install more than these two sets of jumpers on an RS485 line, as this could add an excessive resistive load and draw down the voltage on the line. First try operating without termination resistors.

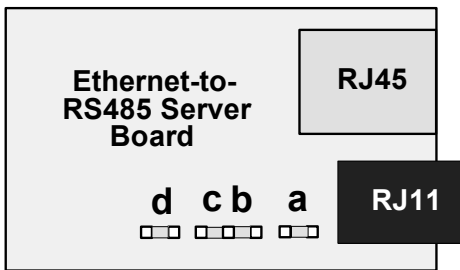
3. Connection of 1/8 DIN meters

Basic Ethernet panel meters use an LNET Ethernet option board with an RJ45 jack for direct connection to a computer, router, switch or hub via an Ethernet cable.

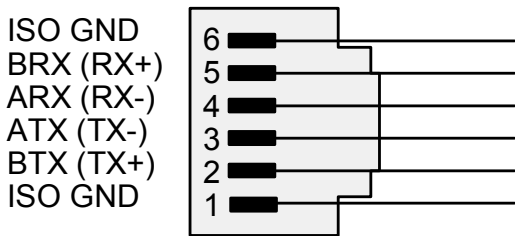


Basic Ethernet meter board
No jumpers needed.

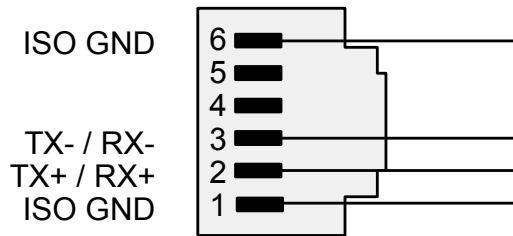
Ethernet-to-serial device server meters with an LNET485 option board can function as normal meters for measurement and control purposes and also as a device server. This option board features an RJ485 jack to the Ethernet plus an RJ11 jack which can support up to 31 remote meters via an RS485 bus in daisy chain fashion.



Ethernet-to-serial device server meter board
Full duplex: No jumpers for short cable runs.
Add **a + c** for long cable runs.
Half duplex: **b + d**. Add **a** for long cable runs.



Full duplex operation

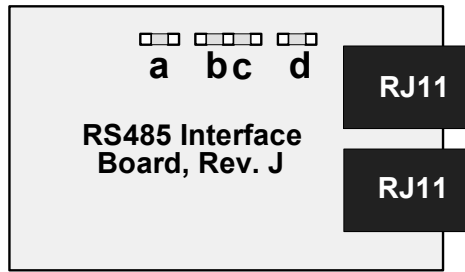


Half duplex operation

Wiring of RJ11 jack of Ethernet-to-serial device server board

Meters on an RS485 bus need to be equipped with our **L485** RS485 digital interface board with dual 6-pin RJ11 jacks (communication option 2), not our **LMOD** RS485 digital interface with dual 8-pin RJ45 jacks (communication option 4). The dual 6-pin RJ11 jacks on the L485 RS485 board are wired in parallel to allow multiple meters to be daisy-chained using readily-available 6-wire data cables with no need for hand-wiring or an RS485 hub. The outer two wires are used for ground.

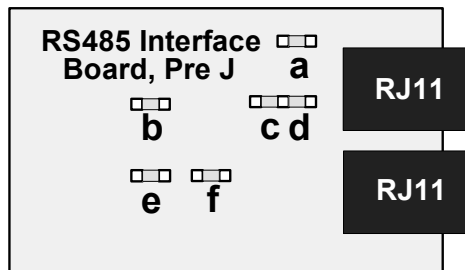
Use **6-wire, straight-through data cables**, not 4-wire telephone cables or crossover cables, all the way from the device server to the last device on the RS485 bus. Connect ATX to ATX, BTX to BTX, etc., with no crossover as you go from device to device.



RS485 meter board, Rev J

Full duplex: No jumpers for short cable runs.
Add **b + d** for long cable runs.

Half duplex: **a + c**. Add **d** in last meter for long cable runs.



RS485 meter board, pre-Rev J

(shipped before April 2009)

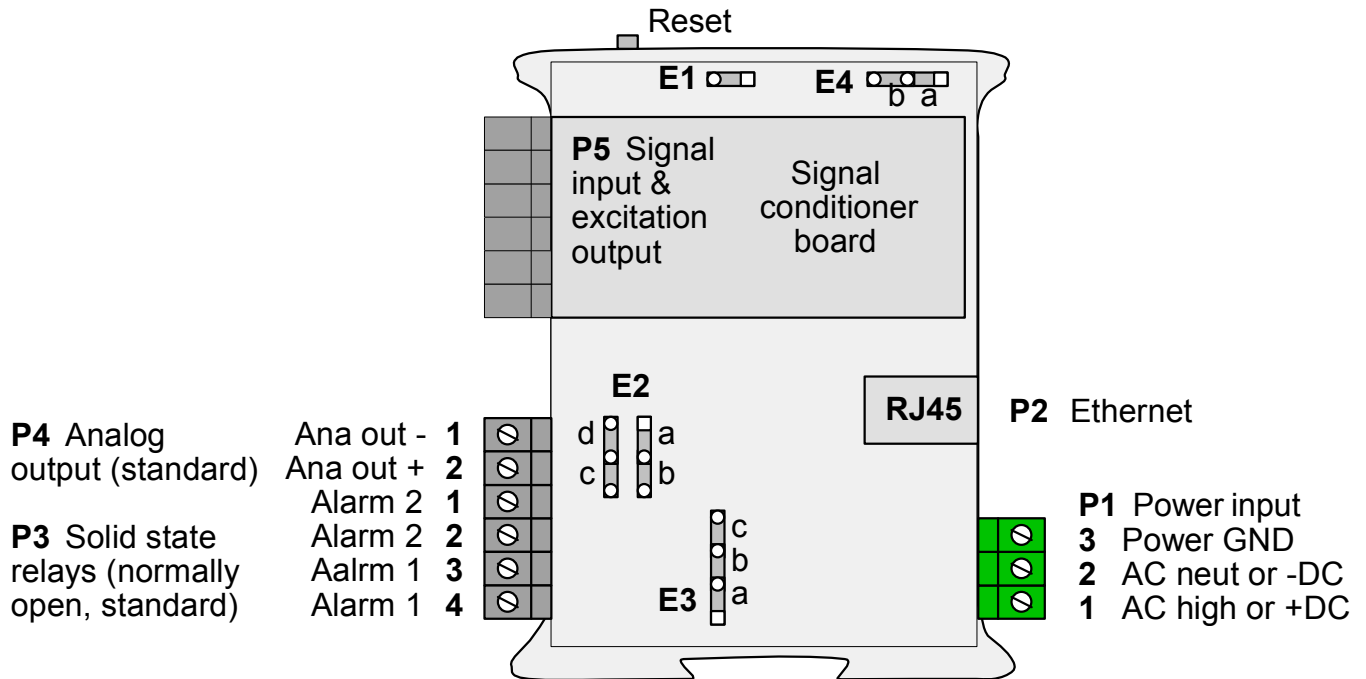
Full duplex: **b + e** bias jumpers on one meter only.
Add **a + d** in last meter for long cable runs.

Half duplex: **b + e** bias jumper on one meter only.
c + f for half duplex operation.
Add **d** in last meter for long cable runs.

RS485 boards used in remote meters

4. Connection of Transmitters

4.1 LTE Ethernet Transmitters



LTE Ethernet transmitters feature an RJ45 Ethernet connector, which allows the transmitter to be connected directly to a computer, router, switch or hub via an Ethernet cable. The RJ45 connector replaces the screws terminals that would otherwise be provided for RS485 or RS232 data I/O. An isolated 4-20 mA, 0-20 mA or 0-10V analog output is standard, as are dual 120 mA solid state relays for alarm or control. Signal conditioner boards are available for all popular industrial analog, frequency and pulse-type transducer signals.

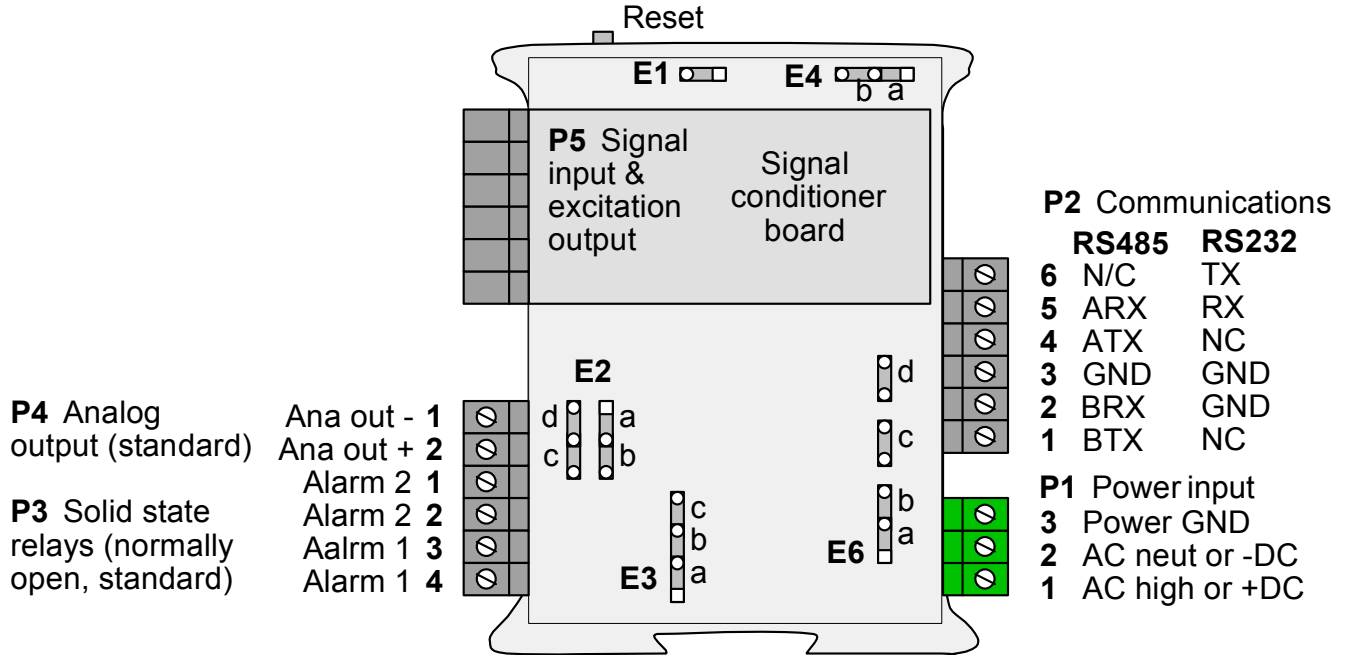
To reset the transmitter (same as power-up), press the Reset button.

To reset communications to 9600 baud, command mode, Custom ASCII protocol, and Address 1, place a jumper at E1 and power up the transmitter.

Analog Output	Jumpers	Excitation Output*	Jumpers
Current (0-20 mA)	E2 a + d	5V, 100 mA	E3 a + c; E4 a
Voltage (0-10V)	E2 b + c	10V, 120 mA	E3 a + c; E4 b
		24V, 50 mA	E3 b, E4 none

* Attempting to draw more than the rated transducer excitation output current will shut down the output.

4.2 LT Series DIN-Rail Transmitters on an RS485 Bus



LT Series transmitters on an RS485 bus offer RS485 data I/O as a standard feature along with an isolated 4-20 mA, 0-20 mA or 0-10V analog output and dual 120 mA solid state relays for alarm or control. Signal conditioner boards are available for all popular industrial analog, frequency and pulse-type transducer signals.

For Ethernet connectivity, connect up to 31 LT Series transmitters to our LNET485 Ethernet-to-serial device server using discrete, parallel wires in daisy chain fashion from the server to each transmitter.

- **For full-duplex communications**, use five wires to connect BTX to BTX, BRX to BRX, ATX to ATX, ARX to ARX, and GND to GND, all in daisy chain fashion without crossover.
- **For half-duplex communications**, use three wires to connect A to A, B to B, and GND to GND.

Serial Signal	Duplex	Jumpers	Termination Resistor*
RS485	Full	None	E6 a + c
	Half	E6 b + d **	E6 c

* Only install termination resistor(s) if the transmitter is the last device on an RS485 line longer than 200 feet (60 m).

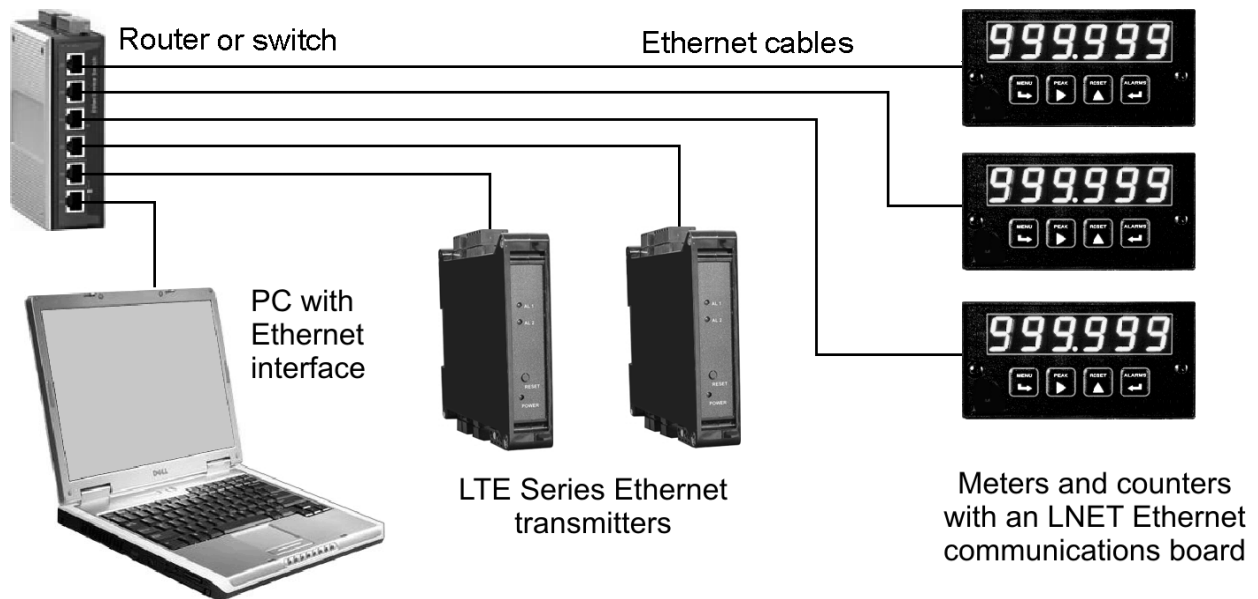
** Or externally jumper BTX to BRX and ATX to ARX (same effect as internal jumpers).

To reset the transmitter (same as power-up), press the Reset button.

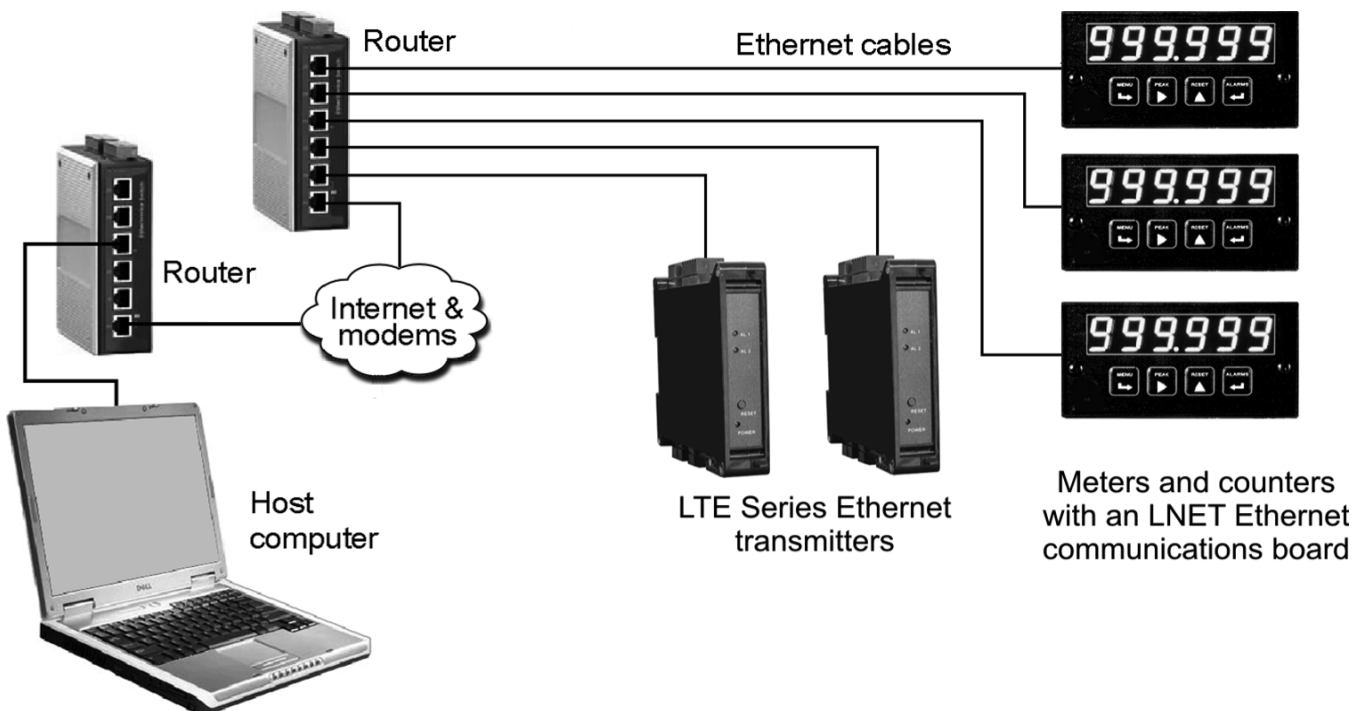
To reset communications to 9600 baud, command mode, Custom ASCII protocol, and Address 1, place a jumper at E1 and power up the transmitter, then remove the E1 jumper.

Other jumper positions are as for our LTE Ethernet Transmitter Node (Section 4.1).

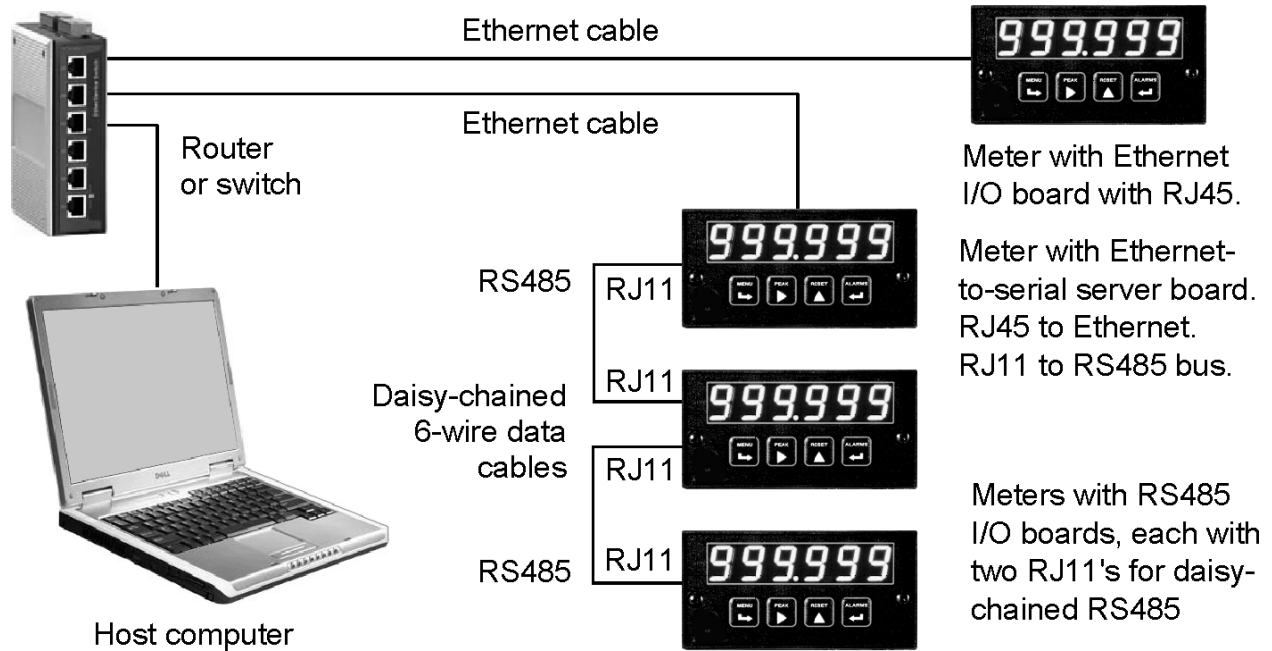
5. NETWORK CONFIGURATION EXAMPLES



Example 1. On the same LAN are the host computer and multiple Nodes consisting of a mix of LTE transmitters plus meters and counters with an LNET Ethernet I/O board. The Nodes will automatically be discovered and can then be configured by Node Manager Software running on the host computer. They can also be discovered and configured by using the Web Server built into all Nodes. To do so, use a web browser like Internet Explorer and enter the public IP address of the router or the IP address of any Node in the network.



Example 2. For connection via the Internet, the PC can be plugged into a local LAN, and remote instruments can be plugged into a remote LAN. Laureate Ethernet Nodes and any Devices attached to them via an RS485 bus are automatically discovered by our Node Manager Software, Instrument Setup Software, or XLog Datalogging Software when the IP address of the remote router is supplied.



Example 3. Multiple Laurel meters can be connected to a single Ethernet port via an Ethernet cable if the first meter is equipped with an LNET485 Ethernet-to-serial converter board. This first meter can take measurements and also serves as the host for an Ethernet-to-serial converter board. That board is acts as the Ethernet gateway for the host meter and for up to 31 other meters via commercial 6-wire RS485 data cables in daisy-chain fashion. All meters with an RS485 interface are also automatically discovered by our Node Manager Software, Instrument Setup Software, or XLog Datalogging Software.

6. HOW TO SET UP NODES WITH NODE MANAGER PC SOFTWARE

Nodes can be configured using Node Manager Software, a Windows application, as follows:

- 1. Connect all Nodes and RS485 device.** The Nodes can be on the same LAN as the host computer or be connected to it via a WAN (Internet). They can also be connected directly to the host computer using a straight-through or cross-over Ethernet cable. Connection via a LAN or a straight-through cable is recommended for initial Node setup.
- 2. Install Node Manager Software on the host computer.** This software can be downloaded from our website at no charge. To install, click on the .exe file and follow the prompts. The recommended installation directory is C:\Program Files\NodeMgr.
- 3. Launch NodeMgr.exe** by clicking on that file name or on the corresponding desktop icon that you may have created. A welcome splash screen will be displayed briefly, followed by the Node Discovery screen.
- 4. Discover all Nodes on the network (Node Discovery tab).** This is done automatically by Node Manager for all Nodes on a LAN upon entering the Node Discovery screen. When the Nodes are on a WAN (Internet), the public IP address of the router must be entered. Your Windows firewall settings must allow Node Manager to run, or Nodes will not be discovered.
- 5. Discover all devices attached to each server Node (Device Discovery tab).** This is done automatically and continuously for the Node's serial settings over the selected range of device addresses, also for all possible combinations of protocol, parity and baud rates of 4800, 9600 and 19200 if this option is checked.
- 6. Force serial settings of discovered devices to those of the server Node (Device Discovery tab).** Select the desired protocol, baud rate and parity for the Node, then check a box to force the discovered devices to the Node's settings.
- 7. Enter the time zone for each Node (Time Zone tab).** This time zone plus UTC/GMT time obtained by the Node over the Internet will allow the Node to send correctly time-tagged readings and alarm notifications via email or streaming data.
- 8. Enter email addresses for each Node (E-Mail Addresses tab).** These addresses will receive readings and alarm notifications via email messages from the Node, as programmed.
- 9. Set up the email account for each Node (E-Mail Account tab).** Enter the email address, incoming mail server and outgoing mail server so that the Node can receive and send email.
- 10. Set up TCP and UDP ports (Advanced Settings tab).** Enter the TCP port, a second UDP port, and a TCP connection timeout. Also use the Advanced Settings screen to write Node setup data to disk and read it from disk.
- 11. Upgrade the Node's firmware (Firmware Upgrade tab)** at no charge from our website when a new Node firmware version is available.

GENERAL INFORMATION

F1 Help Key. Pressing the F1 Key for any tab or control item in the Node Manager program brings up comprehensive help information for that item. To avoid executing a command item, right-click on the command button before pressing the F1 key.

Get and Put Commands. The Get command reads configuration data from the Node for display on the host computer. The Put command writes configuration data from the host computer into the Node. If a Put command is not executed before exiting a Node Manager screen, any entered changes will be lost. A warning message will be displayed first.

Password Protection

A Node can operate with or without Password protection. If a Node is configured with Password protection, Node Manager allows node configuration data to be read with a Get command without a Password; however, any changes to Node configuration with a Put command require a valid password. For each session of Node Manager, the Password only needs to be entered the first time a Put command is issued for that Node.

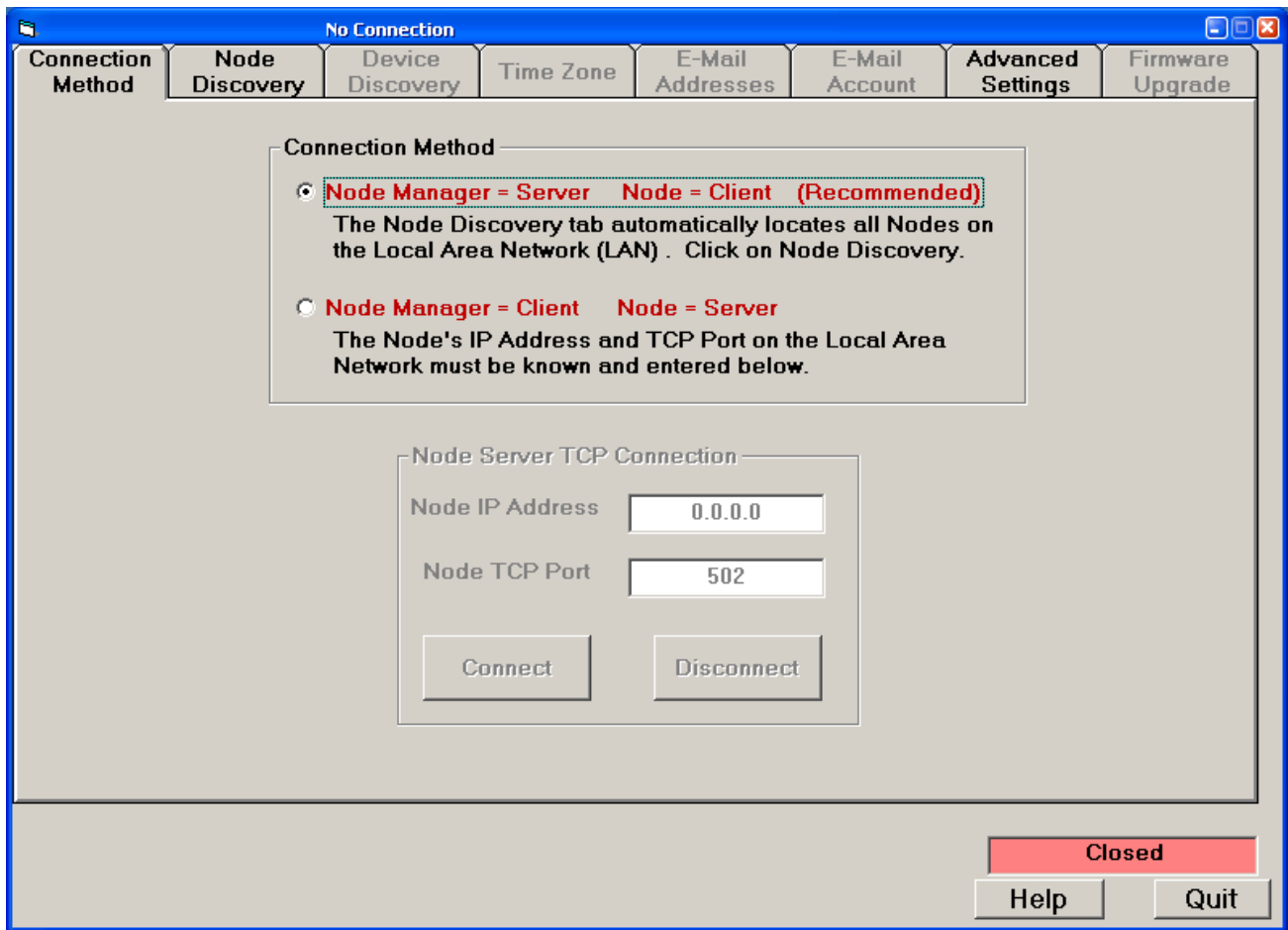
If Password protection is not desired, “NoPassword” appears as the Password. This allows Node configuration changes to be made with only a “Continue” command from the Password screen.

Passwords consist of 1 to 16 case-sensitive alphanumeric characters. These are encoded for storing in the Node and for transmission over the Ethernet. Nodes can each have a different Password, or the same Password can be used for all Nodes.

A Node operating without Password protection can be changed to Password protection by unchecking the “Do not use Node Password protection” box and then entering the desired Password. If the Node is operating with Password protection, the Password can be changed by clicking on the “Change Password” button after first entering the current Password. The new Password is stored in the Node when the Continue command is clicked.

If you have forgotten your password, call the factory number shown in the opening screen of Node Manager. Please have Node Manager running, the Node connected, and the Password screen open when you call.

1. CONNECTION METHOD TAB



The PC-to-Node connection can be made by two methods:

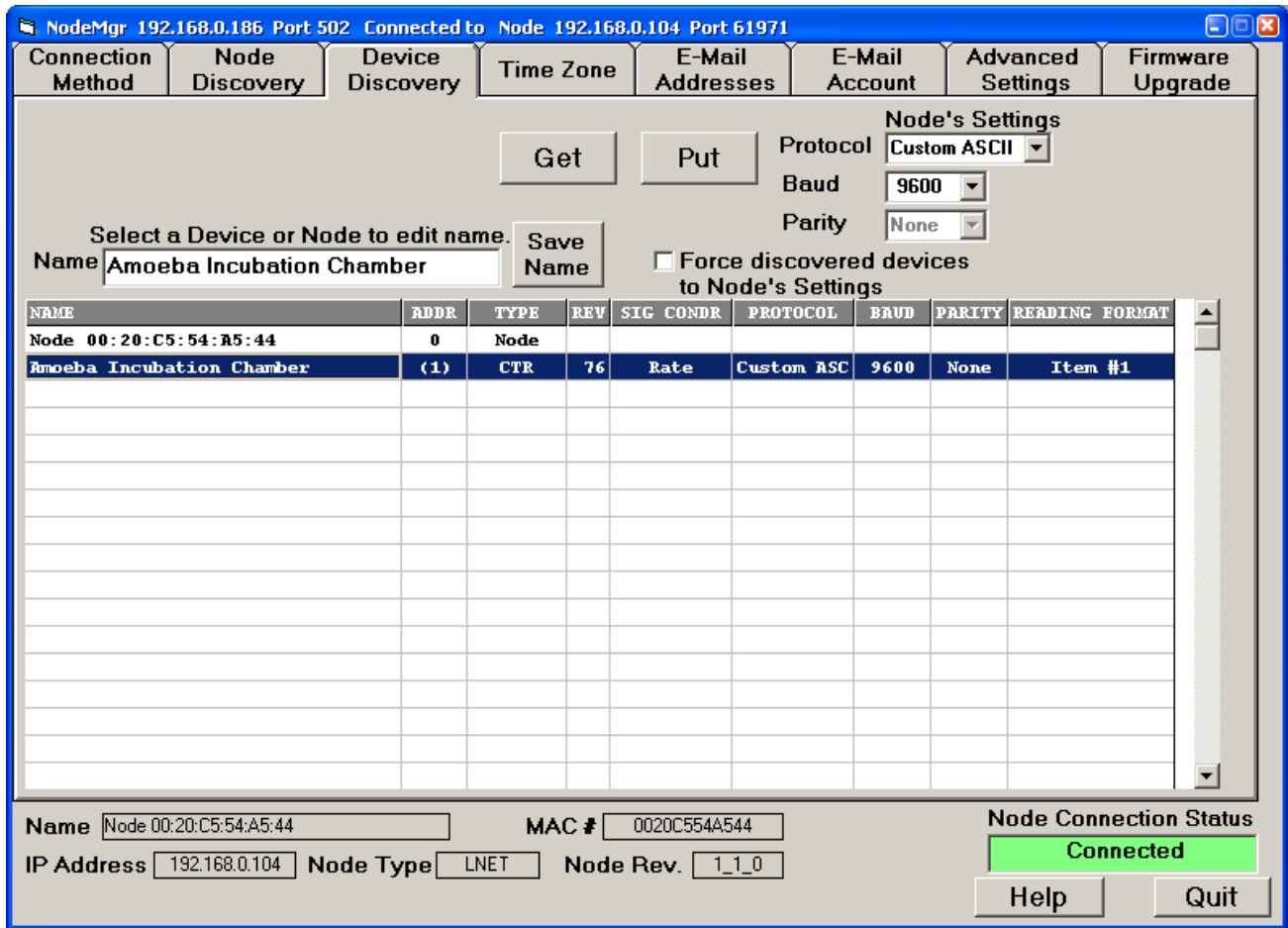
Method 1: PC running Node Manager Software is the server, Node is the client.

The PC sends a broadcast signal to all of the Nodes via the UDP protocol, and requests them to send back their IP and MAC addresses. Node Manager then lists all of responding Nodes, and the user chooses the one of interest. Node Manager then notifies that Node to send a request for a TCP connection. When the Node Manager receives it, it sends an acknowledgement to the Node, and the connection is completed. This method has the advantage that the IP Addresses of all of the Nodes are discovered, and these do not need to be known beforehand. The Node Discovery tab is associated with this Connection Method.

Method 2: Node is the server, PC running Node Manager Software is the client.

To create a connection with a Node, the Node Manager must then know the Node's IP Address and TCP Port number. With this information, it sends a request for a TCP connection directly to the Node, which is constantly listening. The Node sends an acknowledgement, and the TCP connection is completed. This method does not require the use of the UDP protocol to make a connection. If the Node's IP Address and TCP Port are unknown, Method 1 can be used for Node discovery, and Method 2 can then be used.

4. DEVICE DISCOVERY TAB, NOT A DEVICE SERVER NODE

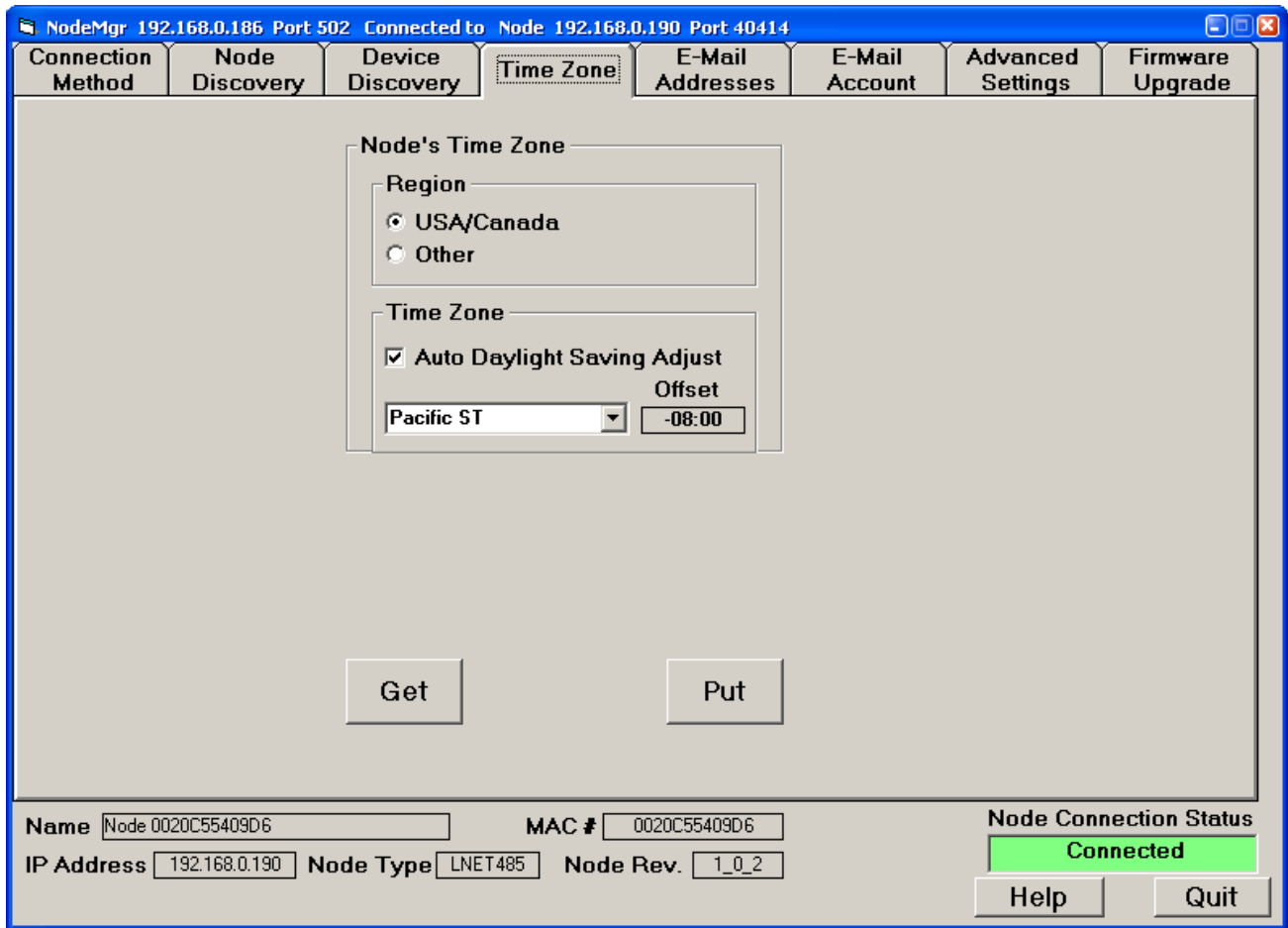


If the selected Node is an LNET485 Ethernet I/O board of a meter, only that single host meter will be discovered as the device for that Node. The Node itself will be shown with an artificially assigned address of 0. The address of the discovered device will be a number from 1-31 for device addressing with the Custom ASCII protocol or from 1-247 with the Modbus protocol. The address of the Node hosting device is always shown in parentheses ().

To change the name of the Node or of a discovered device, select the item, enter the desired name, and press on “Save Name”. The new name will then be stored in the Node and will be included in emails and streaming data.

Set the same serial settings for the Node and the host device. Make your selections under “Node’s Settings” (protocol, baud rate, parity), check the box “Force discovered devices to Node’s settings”, then press “Put” to save your data in the Node.

6. TIME ZONE TAB

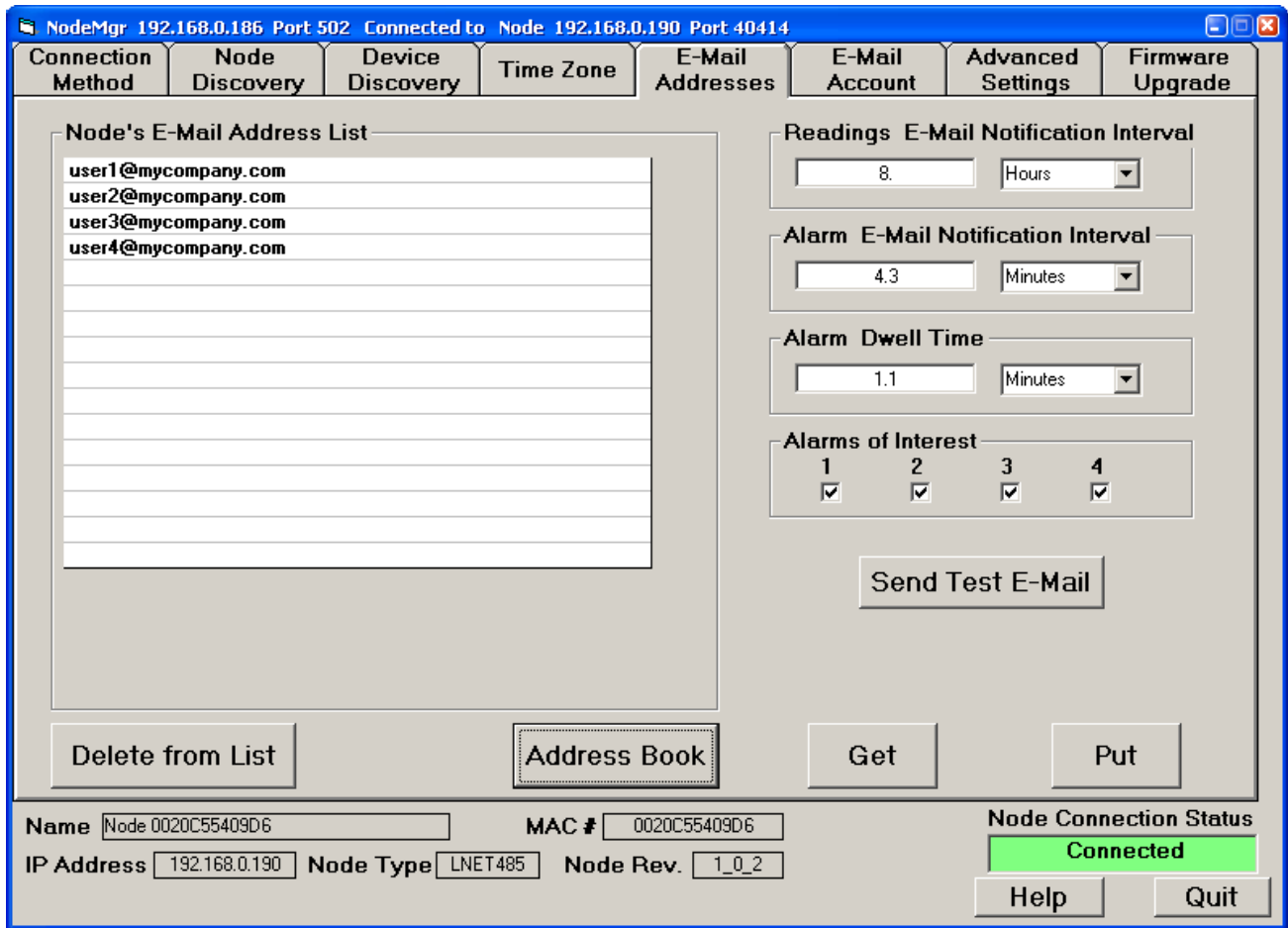


A time stamp is included in email messages and in streaming data sent by the Node. If the Node has a path to the Internet (also required for email), the Node will automatically obtain accurate UTC/GMT time (Coordinated Universal Time or Greenwich Mean Time) from an online time server. The Node's time zone or the offset from UTC/GMT time must be also supplied using this screen.

To set the Node's time zone, select the Region as "USA/Canada" or "Other". If the selected Region is "USA/Canada", the program offers eight selectable time zones, each with the corresponding offset from UTC/GMT in hours. The offset is corrected for Daylight Saving time if that box is checked. If the selected Region is "Other", the offset from UTC/GMT needs to be entered in +/- hh:mm format. If the offset time for a particular region is unknown, go to an Internet source such as www.timetemperature.com. To enter your selections, press "Put". To read previously entered selections, press "Get".

Note: Only one instance of Node Manager can connect to the same Node at the same time.

7. EMAIL ADDRESSES TAB



Readings and alarm notifications can be emailed by the Node to a list of email addresses stored in the Node.

Node's E-Mail Address List displays email addresses stored in the Node that will be receiving emails from the Node. To retrieve that list from the Node, press on "Get". To delete an address from the Node, highlight it, press on "Delete from List", then press on "Put".

Address Book is a new window (see next page) which displays email addresses stored in the host computer under Node Manager. To reduce typing time, these addresses can be downloaded into multiple Nodes, not just the currently active Node. To remove an email address from Address Book, select it, then press on "Remove Selected Book Address". To download email addresses from Address Book into the Node's E-Mail Address List (shown above), select them, then press on "Add Selections to Node's List". This will close the Address Book window. To download the Node's E-mail Address List to the Node, press on "Put".

Readings Email Notification Interval. The readings of all devices connected to the Node are emailed to all email addresses in the Node at this selected time interval. Reading emails are disabled by entering an interval of 0 (hours or minutes).

Alarm Email Notification Interval. An alarm notification email can be sent to all email recipients each time the alarm status of a device connected to the Node changes. To reduce the number of emails, this interval dictates the minimum time between consecutive emails. Alarm emails are disabled by entering an interval of 0 (hours, minutes or seconds).

Alarm Dwell Time. To reduce the number of emails, an Alarm Dwell Time is set so that an email message is sent only when the changed alarm state has lasted longer than this dwell time. If the alarm state changes during the dwell time, the dwell timer is reset.

Alarms of Interest. A device with alarms may have 2 or 4 alarms, some of which may not be of interest. To remove an alarm from Alarm Email Notifications, uncheck that alarm.

Send Test E-mail sends a test email to all of the Nodes' email recipients.

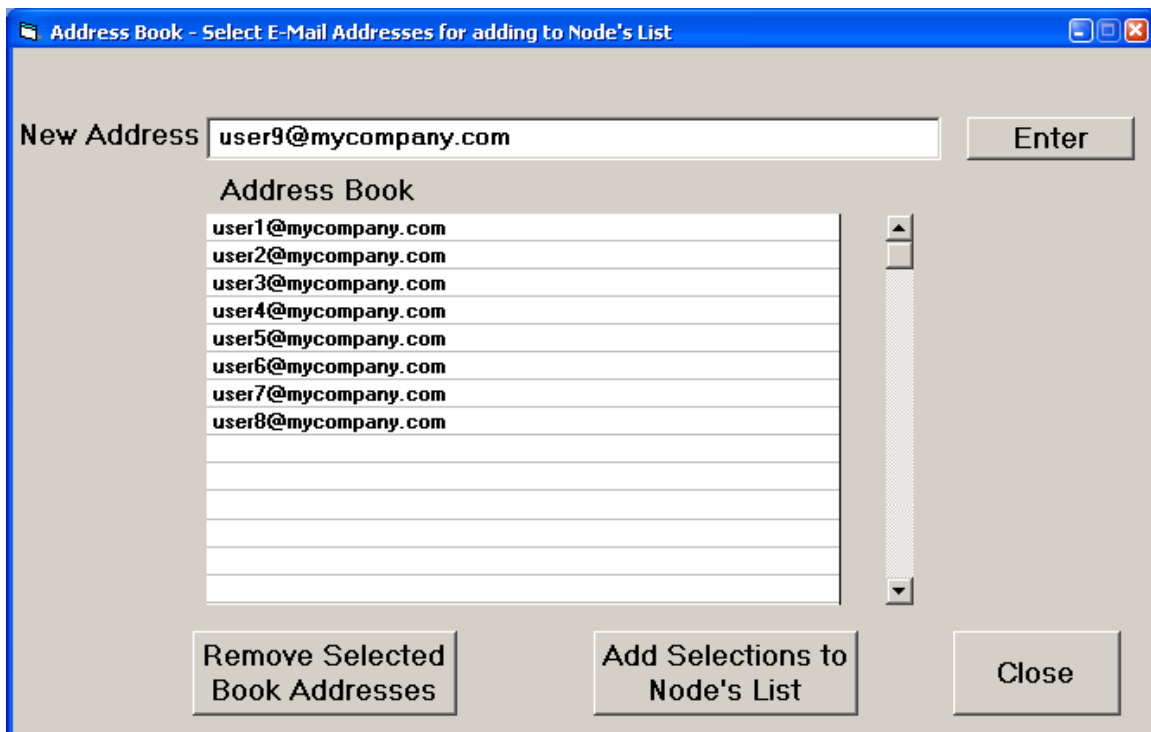
Commands can be emailed to the Node with only these capitalized words in the subject line:

LIST – Adds the sender's email address to the email list in the Node.

DELIST – Removes the sender's email address from the email list in the Node.

ACQUIRE – Requests the last readings of all devices under this Node.

IDENTIFY – Requests the MAC address of the Node.



Note: Only one instance of Node Manager can connect to the same Node at the same time.

8. EMAIL ACCOUNT TAB

The screenshot shows the 'E-Mail Account' tab in the NodeMgr application. The window title is 'NodeMgr 192.168.0.186 Port 502 Connected to Node 192.168.0.190 Port 40414'. The interface includes several sections for configuring email settings:

- Node's E-Mail Address:** A text field containing 'node1@mycompany.com'.
- Server Information (Names):** Two text fields: 'Incoming Mail (POP3)' with 'mail.mycompany.com' and 'Outgoing Mail (SMTP)' with 'relay.myisp.com'.
- Incoming Mail (POP3) Server Logon Information:** Two text fields: 'Username' with 'node1' and 'Password' with '*****'.
- Alternate Server Information (IP Addresses):** A checkbox for 'Advanced User' (unchecked), and two text fields: 'Incoming Mail (POP3)' with '112.41.0.0' and 'Outgoing Mail (SMTP)' with '240.44.0.0'.
- Server Ports:** A checkbox for 'Advanced User' (unchecked), and two text fields: 'Incoming Mail (POP3)' with '110' and 'Outgoing Mail (SMTP)' with '25'.

At the bottom, there are fields for 'Name' (Node 0020C55409D6), 'MAC #' (0020C55409D6), 'IP Address' (192.168.0.190), 'Node Type' (LNET485), and 'Node Rev.' (1_0_2). A 'Node Connection Status' indicator shows 'Connected' in a green box. 'Get' and 'Put' buttons are located between the 'Server Ports' and 'Alternate Server Information' sections. 'Help' and 'Quit' buttons are at the bottom right.

A Node must have its own email account so that it can send and receive emails.

Node's E-Mail Address. Enter a unique email address for the Node so that it can receive email, then press on "Put". That address will also be shown as the sender in emails from the Node.

Server Information (Names). Enter names for the Incoming Mail (POP3) and Outgoing Mail (SMTP) servers for the Node. This information should be the same as for other email clients on the same network. In MS Outlook, it is found under Tools > E-mail Accounts. It should also be available from the network administrator or company IT department.

Advanced User Checkboxes. If desired, IP addresses can be entered instead of names for the Incoming Mail (POP3) and Outgoing Mail (SMTP) servers, and server ports can be changed from their default settings. Standards are Port 110 for Incoming Mail and Port 25 for Outgoing Mail. While Outgoing Port 25 is the standard for sending email, it is also often used for sending spam, so Internet Service Providers may block it. If blocked, try Port 2525 or Port 587.

Note: Only one instance of Node Manager can connect to the same Node at the same time.

9. ADVANCED SETTINGS TAB

NodeMgr 192.168.0.186 Port 502 Connected to Node 192.168.0.190 Port 40414

Connection Method	Node Discovery	Device Discovery	Time Zone	E-Mail Addresses	E-Mail Account	Advanced Settings	Firmware Upgrade
TCP Port <input type="text" value="502"/>		UDP Port 2 <input type="text" value="63179"/>		Static IP Address <input type="text" value="0.0.0.0"/>		Gateway <input type="text" value="0.0.0.0"/>	
TCP Connection Timeout <input type="text" value="32"/> Seconds				Subnet Mask <input type="text" value="0.0.0.0"/>		0.0.0.0 indicates that a DHCP Server is supplying these parameters. If no DHCP Server, these parameters must be supplied.	
Minimum = 16 secs Maximum = 99 hours Disabled = 0 secs		Parent Meter Interrogation <input checked="" type="checkbox"/> Enabled				Disable only if there is a Serial Input Device connected to the Node	
<input type="button" value="Get"/>		<input type="button" value="Put"/>					
		<input type="button" value="Read Node Setup File"/>		<input type="button" value="Write Node Setup File"/>			
Name <input type="text" value="Node 0020C55409D6"/>		MAC # <input type="text" value="0020C55409D6"/>		Node Connection Status <input type="text" value="Connected"/>			
IP Address <input type="text" value="192.168.0.190"/>		Node Type <input type="text" value="LNET485"/>		Node Rev. <input type="text" value="1_0_2"/>		<input type="button" value="Help"/> <input type="button" value="Quit"/>	

Change “Local TCP Port” from its default of 502 if that port value is blocked by your router.

Change “Remote Node UDP Port 2” from its factory default of 63179 if that port value is blocked by your router. Node discovery will use both Node UDP Port 1 at 63179 and Node UDP Port 2 at the value set using this screen.

Change “TCP Connection Timeout” from its factory default of 30 seconds if so desired. Minimum timeout is 16 seconds. Enter 0 to disable timeout. If no TCP activity is detected by the Node during the timeout, the TCP connection is broken by the Node.

Set “Parent Meter Interrogation” to “Enabled” so that the Node will read data from its host meter or counter. Set it to “Disabled” if the host device is a remote serial display or a serial-to-analog transmitter which does not supply data, otherwise the device will go into Reset.

Press “Put” to save your Advanced Setting changes in the Node.

Press “Read Node Setup File” to retrieve a previously saved Node setup file from disk.

Press “Write Node Setup File” to save your current Node setup to disk.

Enter the Static IP Address, Gateway and Subnet Mask if not supplied by a DHCP server.

10. FIRMWARE UPGRADE TAB

The screenshot shows the 'Firmware Upgrade' tab in the NodeMgr application. The window title is 'NodeMgr 192.168.0.186 Port 502 Connected to Node 192.168.0.190 Port 40414'. The interface includes a navigation bar with tabs: Connection Method, Node Discovery, Device Discovery, Time Zone, E-Mail Addresses, E-Mail Account, Advanced Settings, and Firmware Upgrade. The main content area contains instructions for upgrading the firmware, a text input field for the 'Firmware Upgrade File' (set to 'EtherLN1_0_7.txt'), a 'Browse' button, a 'Directory Path' input field (set to 'C:\Program Files\NodeMgr'), and a 'Start Firmware Upgrade' button. A note below the inputs reads: 'Note: Once the Firmware Upgrade is started, DO NOT 'Break' the program or turn off the computer DO NOT remove the power to the Ethernet Node device until the Upgrade is done.' At the bottom, there is a status section with fields for Name (Node 0020C55409D6), MAC # (0020C55409D6), IP Address (192.168.0.190), Node Type (LNET485), and Node Rev. (1_0_2). A 'Node Connection Status' indicator shows 'Connected' in a green box, and there are 'Help' and 'Quit' buttons.

Node firmware upgrades are available from the factory at no charge and should be installed into each Node when available. Upgrading the firmware will not affect data stored in the Node.

To see if a Node needs an upgrade, click on the Firmware Upgrade tab and note the revision of the currently installed firmware, such as EtherLN1_0_0.txt. Then go to the Software Downloads section of the factory website and note the latest posted revision. If it is has a higher number than the currently installed version, download it into a computer directory of your choice. This directory could be C:\Program Files\NodeMgr\, which is also recommended for the Node Manager executable file.

To upgrade a Node, connect to the Node. Use the “Browse” button to locate your download directory. Select your downloaded firmware file and press on “Open”. Then press the “Start Firmware Upgrade” button. A red box will appear indicating “Upgrade in Process”. While this indication is present, do not turn off your computer or disconnect the Node, as this could corrupt the firmware of the Node. Once the upgrade has been completed (in about 5 seconds), the box will turn green. To repeat for other Nodes, connect to each Node, then repeat the upgrade process.

7. HOW TO SET UP NODES WITH THEIR BUILT-IN WEB SERVER

A Web Server is built into each of our Nodes and hosts a website with an IP address, which can be entered into the URL field of a browser (such as Internet Explorer) or be the destination of a web link. The Web Server offers the same Node discovery and setup functions as Node Manager Software, except that only Node Manager Software can be used for Node firmware upgrades.

All web server pages offer online help. Simply click on the blue captions associated with each data entry field.

How to get started:

- **Node access with browser on same LAN as the Nodes.** Once the IP address of any of our Nodes has been entered into your browser, all other Nodes will automatically be discovered by our Web Server and will be listed in the Node Discovery web page. An easy way to discover a first Node IP address (as well as all other Node IP addresses) is to use our Node Manager Software, as explained in the previous section of this manual.
- **Node access over the Internet.** If the browser is to access our Nodes on a remote LAN over the Internet, port forwarding must first be set up for the router that controls the remote LAN. The default port numbers programmed into our Nodes are UDP port **63179** for Node discovery, TCP port **502** for Modbus TCP, and TCP port **80** for http:// communications. If any of these ports are blocked by the router or a firewall, different port values can be entered into our Nodes, and you or your company's IT department will then need to set up the remote router to forward these different port values. Once port forwarding has been set up, simply enter the public IP address of the remote router into your browser. This will open our Node Discovery web page, which lists all of our Nodes on the remote LAN.

1. NODE DISCOVERY Web Page

Node :D4:20:38

NODE DISCOVERY

NODE NAME	IP ADDRESS	TYPE	FIRMWARE	
Node :D4:20:38	<u>192.168.0.197</u>	LNET485	1_3_3	SETUP DEVICES
Node :D4:40:72	<u>192.168.0.196</u>	LNET	1_3_3	SETUP DEVICES
Node 00:20:C5:54:09:D6	<u>192.168.0.195</u>	LNET	1_1_4	SETUP DEVICES

Date: Tuesday, March 19, 2013, 04:16 PM

Navigation: [LAN](#) | [NODE](#)

How to get here: Upon entering the public IP address of your router or the first IP address of a Node into your browser, this web page displays all LNET, LTE and LNET485 Nodes on the same LAN as the router or first Node.

NODE NAME: A Node’s default name is “Node” followed by the Node’s unique MAC address. This name may be changed by the user to a more descriptive name by clicking on SETUP.

IP ADDRESS: The Node’s IP address, which can be entered into a browser such as Internet Explorer or be the destination of a web link.

TYPE: The Node’s type (LNET, LNET485 or LTE). LNET is an Ethernet communication board in a 1/8 DIN instrument. LNET485 is an Ethernet-to-RS485 device server board in a 1/8 DIN instrument. LTE is a DIN rail mounted transmitter with an Ethernet interface. Clicking on TYPE brings up a FACTORY SETUP screen, which is password protected.

FIRMWARE: The Node’s firmware version, which can be updated using Node Manager Software without loss of setup data. Check for the latest version, which can be downloaded from our website.

SETUP: A link to the NODE SETUP web page, which allows changes to the Node’s time zone, name, LED status, and passwords.

DEVICES: A link to the DEVICE DISCOVERY web page, which lists all Devices (or instruments) attached to the Node. With an LNET or LTE Node, this will be a single meter or transmitter. With an LNET485 server Node, there can be a mix of up to 31 meters and transmitters on an RS485 bus.

LAN: A link to the NODE DISCOVERY screen (this screen), which lists all Nodes on the LAN.

DEVICES: A link to the DEVICE DISCOVERY screen, which lists all Devices attached to this Node.

2. NODE SETUP Web Page

Node :D4:20:38

NODE SETUP

[DEVICE INTERFACE SETUP](#) | [EMAIL SETUP](#) | [NETWORK SETUP](#) | [NODE SETUP](#)

TIME ZONE Pacific <input type="button" value="v"/>	DAYLIGHT SAVING YES <input checked="" type="radio"/> / <input type="radio"/> NO	GMT OFFSET (SEC) -28800	<input type="button" value="GO"/>
CHANGE NODE NAME Node :D4:20:38	CHANGE LED STATES 0, Normal <input type="button" value="v"/>		<input type="button" value="GO"/>
CHANGE PASSWORD <input type="text"/>	CONFIRM PASSWORD <input type="text"/>		<input type="button" value="GO"/>

Date: Tuesday, March 19, 2013, 04:33 PM

Navigation: [LAN](#) | [NODE](#)

How to get here: From the top navigation bar of the selected Node.

Background: A time stamp is included in email messages and in streaming data sent by the Node. If the Node has a path to the Internet (also required for email), the Node will automatically obtain accurate UTC/GMT time (Coordinated Universal Time or Greenwich Mean Time) from an online NTP time server. The Node's time zone, daylight saving time status, and the offset from UTC/GMT time are supplied using this screen.

Top row: Links to [DEVICE INTERFACE SETUP](#), [EMAIL SETUP](#), and [NETWORK SETUP](#) screens for this Node.

TIME ZONE: Select one of the six listed North American time zones, or select "Other". This data will be used in the time stamp included in email messages and in streaming data sent by the Node. Press GO to enter any change.

DAYLIGHT SAVINGS: Indicate whether or not GMT Offset (Sec) should be automatically corrected for daylight saving time, which causes the local clock to be adjusted forward one hour in spring and backward one hour in autumn. This correction is only applied if a North American time zone was selected. Press GO to enter any change.

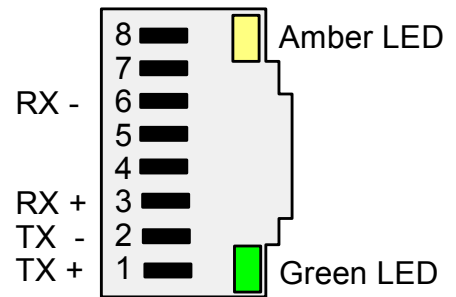
GMT OFFSET (SEC): When the Node has a path to the Internet (as required for email), it will automatically obtain accurate UTC/GMT time (Coordinated Universal Time / Greenwich Mean Time) from an online NTP time server. If a North American time zone was selected, this field will automatically display the offset in seconds from UTC/GMT time. If "Other" was selected, you need to enter the GMT offset in seconds. To obtain the required entry, do a Google search for "world time zones" and convert the listed offset in hours to seconds by multiplying by 3600. Press GO to enter any change.

CHANGE NODE NAME: Used to enter a descriptive name for the Node, such as "Tank 1 Level". If a custom entry is not made, the assigned default name is in the format Node :D4:20:38, where the word "Node" is followed by the Node's MAC address. Press GO to enter any change.

CHANGE LED STATES: Use the pull-down selections to change the color assignments of the two indicator LEDs on the RJ45 jack. Changing the color assignments may be used as a temporary diagnostic to identify a specific Node from its light pattern. Press GO to enter any change.

Normal operation is as follows:

- 1) Following power-up, the green and amber LEDs are on steady until an IP address has been assigned to the Node.
- 2) Once an IP address has been assigned to the Node, the amber LED is turned off. It will light up whenever the Node detects data packet activity.
- 3) When the Node has made a TCP connection, the green LED alternates on (1 sec) and off (1 sec), while the amber LED is on steady.



Ethernet Indicators

CHANGE PASSWORD and CONFIRM PASSWORD: If you wish to password protect the Node, enter the same password in these two fields. A Node can operate with or without password protection. If a password has been defined using this screen, this password will be required for any change to Node Setup, including changing the password. Passwords consist of 1 to 16 case sensitive alphanumeric characters, which are encoded for storing in the Node and for transmission over the Ethernet. Nodes can have the same or different passwords. If you have changed a password, you will be given a 5-minute grace period for the change to take effect. If you have forgotten your password, call the factory and ask for Ethernet Support. Please have the Node connected and the Node Setup screen open when you call.

NODE PROTOCOL: Select Custom ASCII, Modbus RTU, Modbus ASCII, or a pass-through protocol indicated by ? for the device that has been selected under "Select Device". Press GO to enter any change. If only our devices are used, the node protocol, baud rate and parity are automatically selected in a plug-and-play mode as part of device discovery. Multiple devices that are interfaced to the same Node via an RS485 bus can each be set up with a different node protocol, baud rate and parity. This capability is normally only used to accommodate devices by other manufacturers.

- If Modbus TCP is used to communicate over a LAN with the Node, this protocol is seamlessly converted by the Node to Modbus RTU or Modbus ASCII for communication with our meters and transmitters on an RS485 bus.
- The Custom ASCII protocol is simpler than Modbus RTU or Modbus ASCII.
- The ? protocol selection is a pass-through protocol where the Node simply passes through data packets to the LAN without modification in a tunneling mode. This should only be used to accommodate devices by other manufacturers.

BAUD RATE: Select the baud rate for the device that has been selected under "Select Device". Press GO to enter any change. If only our devices are used, the node protocol, baud rate and parity are automatically selected in a plug-and-play mode as part of device discovery.

- Multiple devices that are interfaced to the same Node via an RS485 bus can each be set up with a different node protocol, baud rate and parity. This capability is normally only used to accommodate devices by other manufacturers.
- Available selections range from 300 to 614,400 baud. The factory default setting for our meters is 9,600 baud. Rates higher than 19,200 baud are not supported by our devices shipped prior to 2013, but may be supported by devices by other manufacturers.
- Slow baud rates of 1,200 baud and below are not recommended, since these cause unnecessary transmission delays.

PARITY: Use the "Parity" field to change the parity setting of the device that has been selected under "Select Device". Press GO to enter any change. If only our devices are used, the node protocol, baud rate and parity are automatically selected initially in a plug-and-play mode as part of device discovery.

- Multiple devices that are interfaced to the same Node via an RS485 bus can each be set up with a different node protocol, baud rate and parity. This capability is normally only used to accommodate devices by other manufacturers.
- If "Custom ASCII" is selected as under "Node Protocol", No Parity is automatically selected by the software.

ALARM NOTIFICATION (SEC): An alarm notification email can be sent to all email recipients each time the alarm status of a device connected to the Node changes. To reduce the number of emails, this interval in seconds dictates the minimum time between consecutive emails. Alarm emails are disabled by entering an interval of 0. Press GO to enter any change.

ALARM DWELL TIME (SEC): An alarm dwell time can be set in seconds to reduce the number of emails sent by the Node. An email message will only be sent when the changed alarm state has lasted longer than the dwell time. If the alarm state changes during the dwell time, the dwell timer is reset. Press GO to enter any change.

ALARM MASK: 1, 2, 3, 4: Check any boxes 1, 2, 3, 4 to receive alarm email mail notifications from any alarms 1, 2, 3, 4 the selected devices connected to the Node. If the device is one of our meters (DPM or counter), it can have 2 or 4 alarms. If it is one of our LT or LTE transmitters, it will have 2 solid state alarms. Not all alarms may be of interest for email notification. To remove an alarm from alarm email notifications, uncheck that alarm. Press GO to enter any change.

DATA EMAIL INTERVAL (SEC): The data readings of all devices connected to the Node are emailed to all email addresses in the Node at this selected time interval. Data emails are disabled by entering an interval of 0. Press GO to enter any change.

URL REFRESH (SEC): This is the time interval in seconds at the root pages for Node Discovery and Device Discovery self-refresh, thereby showing the latest Node and device discovery status. The default value is 16 seconds. Press GO to enter any change.

Stop interrogating parent meter continuously? The default is NO, which means that the Node continuously interrogates the parent meter or transmitter for data supplied by the signal conditioner board. Select YES if the node is housed in a serially driven remote display or in a serial-to-analog transmitter, neither of which has a signal conditioner board to interrogate. Failure to select YES will cause a serially driven remote display or serial-to-analog transmitter to reset.

Force all our devices to the Node's communication setting? All devices attached to an LNET485 or Ethernet-to-RS485 Device Server Node can have their own communication settings (baud rate, parity, protocol, and digital address). Select YES to force all discovered devices on a device server Node to the Node's communication settings, otherwise select NO. Press GO to enter any change.

4. EMAIL SETUP Web Page

Node :D4:20:38

EMAIL SETUP

[DEVICE INTERFACE SETUP](#) | [EMAIL SETUP](#) | [NETWORK SETUP](#) | [NODE SETUP](#)

POP3 SERVER	POP3 USERNAME	POP3 PASSWORD	POP3 PORT	POP3 INTERVAL (SEC)
<input type="text"/>	<input type="text"/>	<input type="text"/>	<input type="text" value="110"/>	<input type="text" value="256"/>

SMTTP SERVER	SMTTP EMAIL ADDRESS	SMTTP PORT	<input type="button" value="GO"/>
<input type="text"/>	<input type="text"/>	<input type="text" value="25"/>	

DELETE	ADD NEW EMAIL ADDRESS	TEST EMAIL	<input type="button" value="GO"/>
	<input type="text"/>	<input type="checkbox"/>	

Date: Friday, April 5, 2013, 08:52 PM

Navigation: [LAN](#) | [NODE](#)

How to get here: From the top navigation bar of the selected Node.

Background: An email account can be set up for each Node. This allows the Node to send data readings at periodic intervals, when it encounters an alarm condition, when it goes on-or off-line, or in response to email requests. Commands can also be emailed to the Node with these capitalized words in the subject line:

- LIST – Adds the sender’s email address to the email list in the Node.
- DELIST – Removes an email address from the email list in the Node.
- ACQUIRE – Requests the last readings of all devices under this Node.
- IDENTIFY – Requests the MAC address of the Node.

A powerful feature of our Nodes is the ability to send Alarm information to cell phones via text messages. This allows operators to receive alarm information within a couple of seconds wherever they are, even if they are in a meeting, at lunch, or outside the plant. Sending a text message in North America is as easy as sending an email. Specify the receiving address in the format below, which will vary with the cell phone carrier. “Number” is the 10-digit cell number without spaces or punctuation:

- AT&T: number@txt.att.net
- Qwest: number@qwestmp.com
- T-Mobile: number@tmomail.net
- Verizon: number@vtext.com
- Sprint: number@messaging.sprintpcs.com
- Sprint: number@pm.sprint.com
- Virgin Mobile: number@vmobl.com
- Nextel: number@messaging.nextel.com
- Alltel: number@message.alltel.com
- Metro PCS: number@mymetropcs.com
- Powertel: number@ptel.com
- Boost Mobile: number@myboostmobile.com
- Suncom: number@tms.suncom.com
- Tracfone: number@mmst5.tracfone.com
- U.S. Cellular: number@email.uscc.net

Top row: Links to DEVICE INTERFACE SETUP, NETWORK SETUP, and NODE SETUP web pages.

POP3 SERVER: The incoming mail server to be used for the Node. Enter the same name as for the other email clients on the same network, such as mail.mycompany.com. Press on the first GO to enter.

POP3 USERNAME: The username to be supplied to retrieve incoming email. It is tied to the Node's specific email address and is normally supplied by the network administrator or company IT department. Press on the first GO to enter.

POP3 PASSWORD: The password to be supplied to retrieve incoming email. It is tied to the Node's specific email address and is normally supplied by the network administrator or company IT department. Press on the first GO to enter.

POP3 PORT: A number which identifies the type of incoming email port. Leave at 110, which is the normal number for a POP3 port. The POP3 protocol assumes that there is only one client connected to the mailbox. On rare occasions, a network administrator or company's IT department may specify a different number. Press on the first GO to enter.

POP3 INTERVAL (SEC): The interval in seconds at which to Node will check email. Enter 0 to disable email checking. The maximum interval is over 4 million seconds. Normally do not check email more often than every 60 seconds. Press on the first GO to enter.

SMTP SERVER: The outgoing mail server to be used for the Node. Enter the same name as for the other email clients on the same network, such as mail.mycompany.com. Press on the first GO to enter. Press on the first GO to enter.

SMTP EMAIL ADDRESS: The email address that will be shown as the sender of the email. A typical email address would be in the format user1@mycompany.com. Press on the first GO to enter.

SMTP PORT: A number which identifies the type of outgoing email port. Normally leave the number at 25, which is the standard for sending email via SMTP. Since port is also often used for sending spam, Internet Service Providers may block it. If blocked, try Port 2525 or Port 587. Press on the first GO to enter.

ADD NEW EMAIL ADDRESS: Write in each email address which is to receive emails from the Node, then press GO. Addresses should be in the format user@mycompany.com. All entered addresses will appear below the email entry field, each preceded by a DELETE box.

DELETE: Check each box to the left of any previously entered recipient email address that you wish to delete from the Node, then press GO to execute. This will update the Email Setup screen.

TEST EMAIL: Check the Test Email box, then press then press GO to execute. This will send a test email to all email recipients that have been defined using the ADD NEW EMAIL ADDRESS field to the left, thereby verifying email operation.

5. NETWORK SETUP Web Page

Node :D4:20:38

NETWORK SETUP

[DEVICE INTERFACE SETUP](#) | [EMAIL SETUP](#) | [NETWORK SETUP](#) | [NODE SETUP](#)

REFRESH NET	STATIC IP	GATEWAY IP	SUBNET MASK	GO
<input type="checkbox"/>	<input type="text" value="0.0.0.0"/>	<input type="text" value="0.0.0.0"/>	<input type="text" value="0.0.0.0"/>	<input type="button" value="GO"/>

TCP TIME-OUT (SEC)	MODBUS TCP PORT	HTTP PORT	GO
<input type="text" value="40"/>	<input type="text" value="502"/>	<input type="text" value="80"/>	<input type="button" value="GO"/>

DISCOVERY PORT	STEALTH MODE	AUTO-DISCOVERY	GO
<input type="text" value="63179"/>	<input type="radio"/>	<input checked="" type="radio"/>	<input type="button" value="GO"/>

NTP SERVER	NTP INTERVAL (SEC)	GO
<input type="text" value="pool.ntp.org"/>	<input type="text" value="86400"/>	<input type="button" value="GO"/>

Date: Saturday, April 6, 2013, 06:26 PM

Navigation: [LAN](#) | [NODE](#)

How to get here: From the top navigation bar of the selected Node.

Background: Each Node has an IP address which is used to address the Node on a local area network (LAN) or on the Internet (WAN). An IP address can be static and public so that it can be addressed on over the Internet and have an associated domain name. It can also be a dynamic address assigned by a router or other DHCP server on a LAN. Such an address is also called a private or local IP address. Our Node-resident firmware automatically discovers the IP address of all Nodes on a LAN or WAN, plus any Devices on the RS485 bus connected to an Ethernet-to-RS485 Device Server Nodes.

Top row: Links to DEVICE INTERFACE SETUP, EMAIL SETUP, and NODE SETUP web pages.

REFRESH NET: Enter a checkmark and press GO to refresh the Node's IP address on command from the network.

STATIC IP: Enter a static IP address for the Node if you want to be able to address the Node from anywhere over the Internet. An IP address is a 4-byte number (e.g., 192.168.0.57). Leave the entry at 0.0.0.0 if you want the IP address to be assigned dynamically by the router for the LAN on which the Node is located, or by the Node itself if there is no router or other DHCP server. Press GO to enter any change.

GATEWAY IP: Enter the static IP address of your LAN's gateway router if you want to be able to address your Nodes from anywhere over the Internet. This address is normally provided by your organization's IT department. Leave the entry at 0.0.0.0 if you do not want address your Nodes from anywhere over the Internet. Press GO to enter any change. A gateway router is a device which provides the entrance to a local area network (LAN). This is normally a router which assigns dynamic IP addresses and also serves as a firewall. A gateway can interface a first LAN to another LAN or to the Internet.

SUBNET MASK: Enter the subnet mask for your LAN's gateway router if you want to be able to address Nodes on the LAN from anywhere over the Internet and if a subnet mask entry has been requested by your organization's IT department. A subnet mask is a way of telling your router which network addresses it can consider local and which are remote. Leave at 0.0.0.0 to disable the subnet mask feature. Press GO to enter any change.

TCP TIME-OUT: Change "TCP Connection Timeout" from its factory default of **32** seconds if so desired. Minimum timeout is 16 seconds. Enter 0 to disable timeout. If TCP activity has not been detected by the Node for this timeout period, the TCP connection is broken by the Node. Press GO to enter any change.

MODBUS TCP PORT: Enter the TCP port number of the Node or leave that number at **502** if you have no reason to change. Press GO to enter any change. The standard TCP port number for Modbus is 502. It is possible to use a different port number, provided that both the client and server can be set to use a different port number. This may not be possible, and in most cases it will be most convenient to just use the standard port number 502. Our Node discovery software uses TCP port 502 and UDP port 63179.

HTTP PORT: Enter the HTTP port number of the Node or leave that number at **80** if you have no reason to change. Press GO to enter any change. By default, port 80 is used by URLs that begin with http:// and is the default port number for HTTP communications. Port 443 is used by URLs that begin with https:// . Only enter a port number other than 80 if that number has been blocked by the IT department and a different number has been supplied. If the port number is changed to anything other than 80, all web addresses that reference the Node must include that port number.

DISCOVERY PORT: Enter a second UDP port number if required. Leave the UDP number at **63179** if you do not require a second UDP port number. Press GO to enter any change. The TCP and UDP protocols specify a source and destination port number in their packet headers. A port number is a software construct associated with permissions for an application such as our Node discovery. Our Node discovery software uses TCP port 502 and UDP port 63179. If port 63179 is blocked by a router, this field can be used to enter a second UDP port number, which will then be used for Node discovery in addition to 63179.

AUTO-DISCOVERY: This default selection permits the Node to broadcast a 70-byte self identification message over the LAN every 15 seconds, a very light load on the network. This allows the Nodes to discover each other's IP Addresses, thereby greatly facilitating network setup and maintenance.

STEALTH MODE: This setting precludes the Node from broadcasting a 70-byte self-identification message over the LAN every 15 seconds. This setting should only be selected if such broadcasting is not allowed by IT department policy, as it does not allow the Nodes to discover each other's IP Addresses. However, IP addresses can still be discovered by our PC-resident Node Manager software.

NTP SERVER: Enter an NTP time server, if desired, other than www.pool.ntp.org. This is the default online NTP time server used to synchronize the clocks in our Nodes and also millions of other networked devices. It returns extremely accurate UTC/GMT time (Coordinated Universal Time or Greenwich Mean Time), which is then modified by our Nodes for the local time zone and is used to time and date stamp emailed and streamed reading data. Press GO to enter any change.

NTP INTERVAL (SEC): Specifies how often the Node will correct its own quartz crystal clock by checking the NTP time server. The default interval is 86400 seconds, or one day. Press GO to enter any change.

6. DEVICE DISCOVERY Web Page

Node :D4:20:38

DEVICE DISCOVERY

NAME	TYPE	DATA	ALARM
<u>Device 004</u>	<u>DPM</u>	<u>+262.55</u>	<u>0000</u>
<u>Device 004</u>	<u>CTR</u>	<u>+300.03</u>	<u>0000</u>
<u>Device 004</u>	<u>DPM</u>	<u>+2.001 / +2.001 / +2.001</u>	<u>0000</u>

Date: Tuesday, March 19, 2013, 04:19 PM

Navigation: [LAN](#) | [NODE](#)

How to get here: Select a specific Node on the NODE DISCOVERY PAGE and click on DEVICES or on NODE.

Background: This screen displays all Devices (or instruments) discovered for the Node. If the Node is an LTNET Ethernet board in a meter or counter or is an LTE transmitter, only a single Device will be shown, namely the host meter, counter or transmitter. If the Node is an LNET485 Ethernet-to-RS485 Device Server, there can be up to 31 Devices, namely the host meter or counter plus up to 30 additional Devices on an RS485 bus. Hovering over any underlined item will bring up an informational bubble.

NAME: The name assigned to the discovered Device using the DEVICE INTERFACE SETUP page.

TYPE: The instrument type programmed into the Device by the factory. Choices are DPM for analog input (including panel instruments and transmitters), CTR for pulse input (including panel instruments and transmitters), and WT for meters with weighing firmware (panel instruments).

DATA: The data transmitted by the Device. Setup of transmitted data can be by means of Instrument Setup Software (panel instruments and transmitters) or front panel keys (panel mounted instruments). Hover for data labels. For example, hovering over “+2.001 / +2.001 / +2.001” brings up the bubble “Reading / Peak / Valley”.

ALARM: State of up to 4 alarms, where 0 indicates no alarm and 1 indicates an alarm state. If the Device is one of our panel instruments, it can have 2 or 4 alarms. If it is one of our LT or LTE transmitters, it will have 2 alarms. Setup of alarms can be by means of Instrument Setup Software (panel instruments and transmitters) or front panel keys (panel mounted instruments).

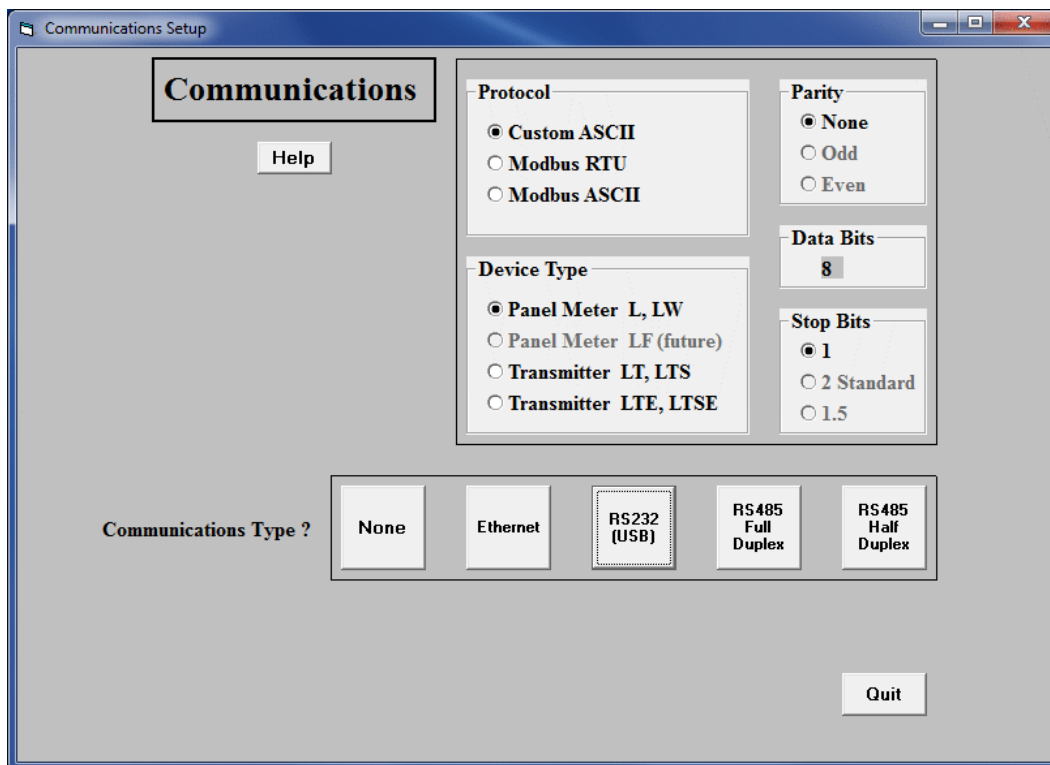
9. INSTRUMENT SETUP SOFTWARE

Instrument Setup Software has the Node discovery capabilities of Node Manager Software, but only Node Manager Software can be used to assign static IP addresses, change port numbers, change TCP connection timeout, set up emails to be sent periodically or upon alarm, set up time zones for time stamped readings, and update Node firmware, as described in this manual.

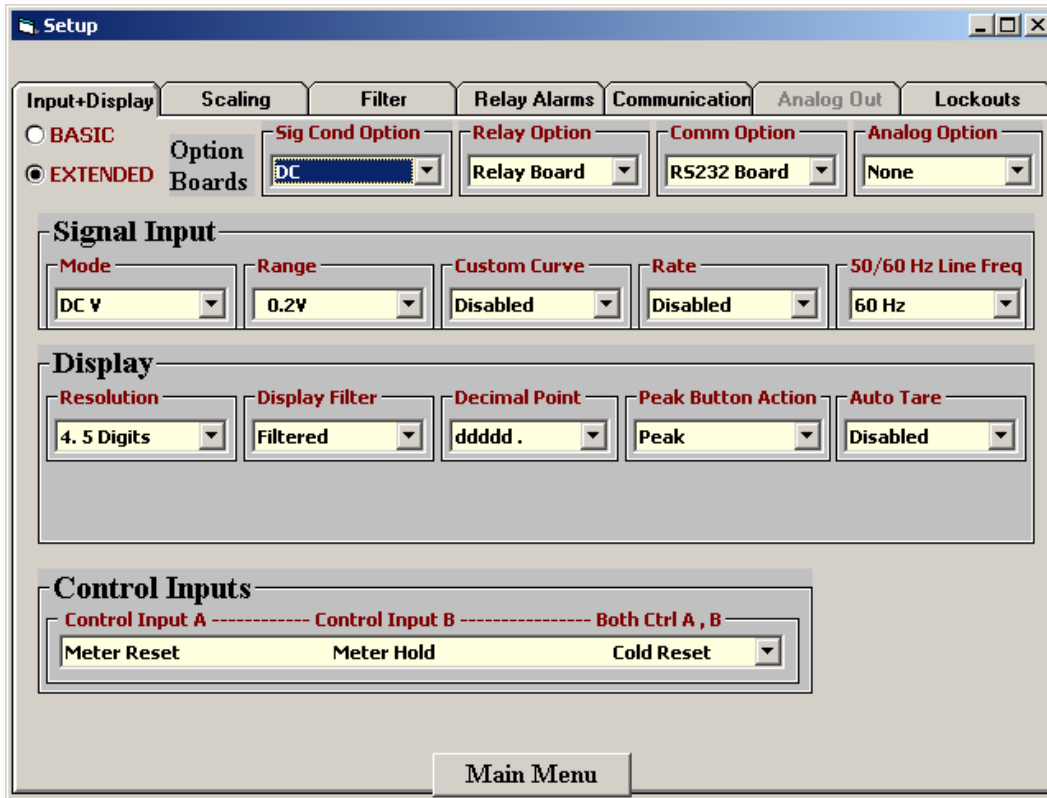
Instrument Setup Software is the preferred tool to set up meters, counters and timers when communications and a PC are available. It is the required tool to set up transmitters. It allows uploading, editing and downloading of setup data, execution of commands under computer control, listing, plotting and graphing of data, and computer prompted calibration. It can also display the location of jumpers which have to be inserted to select signal types and ranges.

To install Instrument Setup software, download IS2.exe (Version 3.4.5 or higher) onto your PC from our website. Double-click on the downloaded file to unzip it into a temporary directory, such as c:\temp. Double-click on setup.exe to install the software on your PC.

To establish Ethernet communications with Instrument Setup, connect your PC to the same LAN as the Ethernet meters and transmitters, and ensure that these are under power. Start Instrument Setup by clicking on Start => Programs => IS2 => IS2 or on the desktop shortcut that you may have established. This will open the Communications (screen shown below). Click on “Ethernet”, which will open the “Node Discovery” screen.



In the resulting DPM or Counter Main Menu screen, which is a mostly blank screen, go to DPM or Counter, and execute a “Get Setup” to retrieve setup data from the selected Device. Then click on View and Setup. The resulting Setup screen will allow you to view and change Device setup parameters. After making changes, click on “Main Menu”. In the resulting DPM or Counter Main Menu screen, go to DPM or Counter, and execute a “Put Setup” to download the changed setup data into the selected Device.



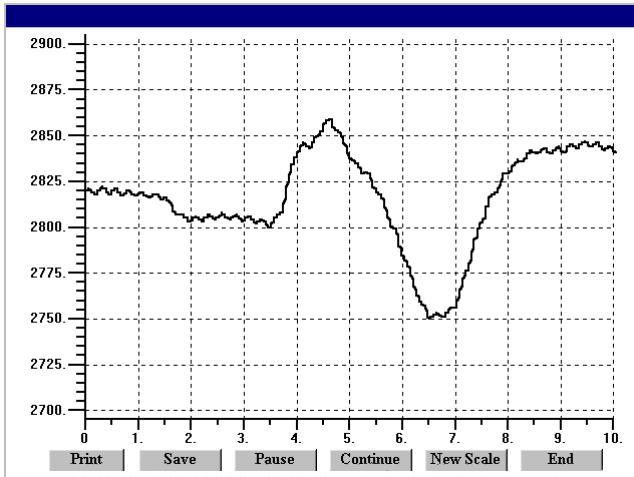
Summary Information:

- To select a meter or transmitter, highlight its associated Node under the Node Discovery tab, then click on the Device Discovery tab. All discovered meters and transmitters will be listed.
- To work on a discovered device, select it, then click on the “Main Menu” button.
- To retrieve device setup information from the device, click on Device => Get Setup.
- To retrieve device setup information from disk, click on File => Open Setup.
- To view and then edit that the retrieved information, click on View => Setup.
- To download the edited information back into the device, click on Device => Put Setup.
- To save the edited information to disk, click on File -> Save Setup.

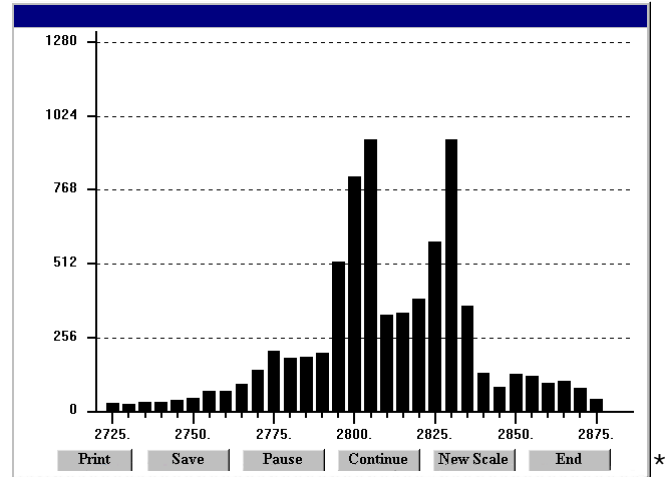
You will find that Instrument Setup software is very user friendly, with separate tab-selectable windows for Input+Display, Scaling, Filter, Relay Alarms, Communications, Analog Output, and Lockouts. If the required hardware, such as an analog output board, is not sensed, the corresponding tab will be grayed out. Uploading and downloading setup files from a host PC can be a major time saving when multiple meters or transmitters have to be set up in the same way.

Additional Instrument Setup Software Features

- **The Commands pull-down menu** allows execution of certain meter functions by using a computer mouse. You can reset individual meter functions, display current or peak readings, and enter numbers to be displayed on a remote meter. The Commands pull-down menu is grayed out unless a Get Setup has been executed.



Plot



Graph

- **The Readings pull-down menu** provides three formats to display device data on the PC monitor. Use the Pause and Continue buttons to control the timing of data collection, then press Print for a hardcopy using your PC printer.
- **List** presents the latest readings in a 20-row by 10-column table. Press Pause at any time to freeze the display. Press Print for a hardcopy. List can capture peak readings.
- **Plot** generates a plot of readings vs. time in seconds. It effectively turns the DPM-PC combination into a printing digital oscilloscope.
- **Graph** generates a histogram, where the horizontal axis is the reading and the vertical axis is the number of readings. The display resizes itself as the number of readings increases.
- **The Jumpers pull-down menu** shows required board jumper positions.
- **The Calibration pull-down menu** allows easy calibration of voltage and current ranges for the DC, load cell, and AC RMS signal conditioner boards. The PC first recognizes the type of board, then prompts you to apply specific jumpers and calibration signals. Press Ready to take a reading. Press Repeat to take more readings. When you have decided on which reading to accept, press on the number 1 through 10 of that reading. Additional calibration software is available online.

10. WARRANTY

Laurel Electronics Inc. warrants its products against defects in materials or workmanship for a period of one year from the date of purchase.

In the event of a defect during the warranty period, the unit should be returned, freight prepaid (and all duties and taxes) by the Buyer, to the authorized Laurel distributor where the unit was purchased. The distributor, at its option, will repair or replace the defective unit. The unit will be returned to the buyer with freight charges prepaid by the distributor.

LIMITATION OF WARRANTY

The foregoing warranty shall not apply to defects resulting from:

1. Improper or inadequate maintenance by Buyer.
2. Unauthorized modification or misuse.
3. Operation outside the environmental specifications of the product.
4. Mishandling or abuse.

The warranty set forth above is exclusive and no other warranty, whether written or oral, is expressed or implied. Laurel specifically disclaims the implied warranties of merchantability and fitness for a particular purpose.

EXCLUSIVE REMEDIES

The remedies provided herein are Buyer's sole and exclusive remedies. In no event shall Laurel be liable for direct, indirect, incidental or consequential damages (including loss of profits) whether based on contract, tort, or any other legal theory.