



#DS4935 PRINTED IN CHINA



## **WARNING!**

**This manual provides critical safety instructions on the proper setup, operation, maintenance and service of this machine/equipment.**

**Failure to read, understand and follow the instructions given in this manual may result in serious personal injury, including amputation, electrocution or death.**

**The owner of this machine/equipment is solely responsible for its safe use. This responsibility includes but is not limited to proper installation in a safe environment, personnel training and usage authorization, proper inspection and maintenance, manual availability and comprehension, application of safety devices, blade/cutter integrity, and the usage of personal protective equipment.**

**The manufacturer will not be held liable for injury or property damage from negligence, improper training, machine modifications or misuse.**



## **WARNING!**

**Some dust created by power sanding, sawing, grinding, drilling, and other construction activities contains chemicals known to the State of California to cause cancer, birth defects or other reproductive harm. Some examples of these chemicals are:**

- **Lead from lead-based paints.**
- **Crystalline silica from bricks, cement and other masonry products.**
- **Arsenic and chromium from chemically-treated lumber.**

**Your risk from these exposures varies, depending on how often you do this type of work. To reduce your exposure to these chemicals: Work in a well ventilated area, and work with approved safety equipment, such as those dust masks that are specially designed to filter out microscopic particles.**

# Table of Contents

<b>INTRODUCTION.....</b>	<b>2</b>
Foreword .....	2
Contact Info .....	2
Machine Data Sheet.....	3
Identification .....	4
<b>SECTION 1: SAFETY .....</b>	<b>5</b>
Safety Instructions for Machinery .....	5
Additional Safety Instructions for Tile Saws.....	7
<b>SECTION 2: CIRCUIT REQUIREMENTS .....</b>	<b>8</b>
110V Operation .....	8
<b>SECTION 3: SET UP .....</b>	<b>9</b>
Set Up Safety .....	9
Unpacking .....	9
Inventory.....	9
Clean Up .....	10
Site Considerations .....	10
Assembly .....	11
Test Run.....	12
Lubrication.....	13
<b>SECTION 4: OPERATIONS .....</b>	<b>14</b>
Operation Safety .....	14
Cutting .....	14
45° Miter Cutting .....	15
Bevel Cutting .....	15
<b>SECTION 5: MAINTENANCE .....</b>	<b>16</b>
General.....	16
Blade Changes.....	16
<b>SECTION 6: SERVICE .....</b>	<b>17</b>
Troubleshooting.....	17
Parts Breakdown .....	18
Parts List .....	19
Label Placement and List.....	20
<b>WARRANTY AND RETURNS .....</b>	<b>23</b>

# INTRODUCTION

---

## Foreword

---

We are proud to offer the Model H3118 Tile Saw. This machine is part of a growing Grizzly family of fine tools. When used according to the guidelines set forth in this manual, you can expect years of trouble-free, enjoyable operation and proof of Grizzly's commitment to customer satisfaction.

The specifications, drawings, and photographs illustrated in this manual represent the Model H3118 when the manual was prepared. However, owing to Grizzly's policy of continuous improvement, changes may be made at any time with no obligation on the part of Grizzly.

For your convenience, we always keep current Grizzly manuals available on our website at **www.grizzly.com**. Any updates to your machine will be reflected in these manuals as soon as they are complete. Visit our site often to check for the latest updates to this manual!

## Contact Info

---

If you have any comments regarding this manual, please write to us at the address below:

Grizzly Industrial, Inc.  
c/o Technical Documentation Manager  
P.O. Box 2069  
Bellingham, WA 98227-2069  
Email: [manuals@grizzly.com](mailto:manuals@grizzly.com)

We stand behind our machines. If you have any service questions or parts requests, please call or write us at the location listed below.

Grizzly Industrial, Inc.  
1203 Lycoming Mall Circle  
Muncy, PA 17756  
Phone: (570) 546-9663  
Fax: (800) 438-5901  
E-Mail: [techsupport@grizzly.com](mailto:techsupport@grizzly.com)  
Web Site: <http://www.grizzly.com>





# MACHINE DATA SHEET

Customer Service #: (570) 546-9663 • To Order Call: (800) 523-4777 • Fax #: (800) 438-5901

## MODEL H3118 TILE SAW

Design Type ..... Benchtop

### Product Dimensions:

Weight ..... 25 lbs.  
Table Height ..... 7"  
Table Size ..... 15" x 15½"  
Water Reservoir ..... 12½" x 7½"

### Construction:

Table ..... Stainless Steel  
Stand ..... Steel  
Bearings ..... Sealed and Permanently Lubricated Ball Bearings

### Cutting Capacity:

Maximum Blade Diameter ..... 7"  
Maximum Depth of Cut at 90° ..... 1"  
Rip Cut Capacity ..... 8"

### Motor:

Type ..... Universal  
Phase/Cycle ..... Single-Phase / 60Hz  
Voltage ..... 110V  
Amps ..... 3.75A  
Motor Speed ..... 3450 RPM  
Power Transfer ..... Direct Drive  
Switch ..... ON/OFF Toggle w/ Safety Switch  
Cord Provided ..... NEMA 5-15



---



# SECTION 1: SAFETY

## WARNING

### For Your Own Safety, Read Instruction Manual Before Operating this Machine

The purpose of safety symbols is to attract your attention to possible hazardous conditions. This manual uses a series of symbols and signal words intended to convey the level of importance of the safety messages. The progression of symbols is described below. Remember that safety messages by themselves do not eliminate danger and are not a substitute for proper accident prevention measures.



Indicates an imminently hazardous situation which, if not avoided, **WILL** result in death or serious injury.



Indicates a potentially hazardous situation which, if not avoided, **COULD** result in death or serious injury.



Indicates a potentially hazardous situation which, if not avoided, **MAY** result in minor or moderate injury. It may also be used to alert against unsafe practices.

**NOTICE**

This symbol is used to alert the user to useful information about proper operation of the machine.

## WARNING

### Safety Instructions for Machinery

- 1. READ THE ENTIRE MANUAL BEFORE STARTING MACHINERY.** Machinery presents serious injury hazards to untrained users.
- 2. ALWAYS USE ANSI APPROVED SAFETY GLASSES WHEN OPERATING MACHINERY.** Everyday eyeglasses only have impact resistant lenses—they are NOT safety glasses.
- 3. ALWAYS WEAR A NIOSH APPROVED RESPIRATOR WHEN OPERATING MACHINERY THAT PRODUCES DUST.** Most types of dust (wood, metal, etc.) can cause severe respiratory illnesses.
- 4. ALWAYS USE HEARING PROTECTION WHEN OPERATING MACHINERY.** Machinery noise can cause permanent hearing loss.
- 5. WEAR PROPER APPAREL. DO NOT** wear loose clothing, gloves, neckties, rings, or jewelry that can catch in moving parts. Wear protective hair covering to contain long hair and wear non-slip footwear.
- 6. NEVER OPERATE MACHINERY WHEN TIRED OR UNDER THE INFLUENCE OF DRUGS OR ALCOHOL.** Be mentally alert at all times when running machinery.



# WARNING

## Safety Instructions for Machinery

7. **ONLY ALLOW TRAINED AND PROPERLY SUPERVISED PERSONNEL TO OPERATE MACHINERY.** Make sure operation instructions are safe and clearly understood.
8. **KEEP CHILDREN AND VISITORS AWAY.** Keep all children and visitors a safe distance from the work area.
9. **MAKE WORKSHOP CHILDPROOF.** Use padlocks, master switches, and remove start switch keys.
10. **NEVER LEAVE WHEN MACHINE IS RUNNING.** Turn power **OFF** and allow all moving parts to come to a complete stop before leaving machine unattended.
11. **DO NOT USE IN DANGEROUS ENVIRONMENTS.** DO NOT use machinery in damp, wet locations, or where any flammable or noxious fumes may exist.
12. **KEEP WORK AREA CLEAN AND WELL LIGHTED.** Clutter and dark shadows may cause accidents.
13. **USE A GROUNDED EXTENSION CORD RATED FOR THE MACHINE AMPERAGE.** Grounded cords minimize shock hazards. Undersized cords create excessive heat. Always replace damaged extension cords.
14. **ALWAYS DISCONNECT FROM POWER SOURCE BEFORE SERVICING MACHINERY.** Make sure switch is in OFF position before reconnecting.
15. **MAINTAIN MACHINERY WITH CARE.** Keep blades sharp and clean for best and safest performance. Follow instructions for lubricating and changing accessories.
16. **MAKE SURE GUARDS ARE IN PLACE AND WORK CORRECTLY BEFORE USING MACHINERY.**
17. **REMOVE ADJUSTING KEYS AND WRENCHES.** Make a habit of checking for keys and adjusting wrenches before turning machinery **ON**.
18. **CHECK FOR DAMAGED PARTS BEFORE USING MACHINERY.** Check for binding or misaligned parts, broken parts, loose bolts, and any other conditions that may impair machine operation. Repair or replace damaged parts before operation.
19. **USE RECOMMENDED ACCESSORIES.** Refer to the instruction manual for recommended accessories. Improper accessories increase risk of injury.
20. **DO NOT FORCE MACHINERY.** Work at the speed for which the machine or accessory was designed.
21. **SECURE WORKPIECE.** Use clamps or a vise to hold the workpiece when practical. A secured workpiece protects your hands and frees both hands to operate the machine.
22. **DO NOT OVERREACH.** Maintain stability and balance at all times.
23. **MANY MACHINES CAN EJECT WORKPIECES TOWARD OPERATOR.** Know and avoid conditions that cause the workpiece to "kickback."
24. **ALWAYS LOCK MOBILE BASES (IF USED) BEFORE OPERATING MACHINERY.**
25. **CERTAIN DUST MAY BE HAZARDOUS** to the respiratory systems of people and animals, especially fine dust. Be aware of the type of dust you are exposed to and always wear a respirator designed to filter that type of dust.





## **WARNING**

# Additional Safety Instructions for Tile Saws

1. **WET HANDS.** DO NOT touch electrical components with wet hands.
2. **PLUG IN.** All plug and receptacles must be off the ground and in a dry location.
3. **DRIP LOOP.** Always make a drip loop with the power cord when using the saw.
4. **GFCI.** Always use a GFCI outlet in the electrical circuit of the saw.
5. **BLADE COOLING.** Ensure that the blade remains lubricated with water during all cutting operations.
6. **DRY CUTTING.** Never dry cut with blades designed for wet cutting.
7. **DUST MASK.** Always wear a dust mask when cutting tile.
8. **DIAMOND BLADES.** DO NOT feed the tile into the blade faster than the blade can cut.
9. **BLADE SELECTION.** Match the correct diamond blade to the material being cut.
10. **BLADE MOUNTING.** Before mounting the blade, inspect the arbor, arbor nut, and flanges for damage, wear, or looseness. Replace any damaged or worn parts.
11. **BLADE DIRECTION.** Check that the directional arrow on the saw blade points in a counterclockwise direction as viewed from the mounting side.
12. **BLADE ARBOR.** Ensure the blade arbor hole size matches the shaft size on the saw.
13. **BLADE GUARD.** DO NOT operate the saw without the blade guard installed and properly adjusted.
14. **BLADE SPEED.** DO NOT exceed the safe operating speed of the blade.
15. **SAFE GRINDING.** DO NOT grind tile on the side of the blade, or make radius or curve cuts.

## **WARNING**

Like all machinery there is potential danger when operating this machine. Accidents are frequently caused by lack of familiarity or failure to pay attention. Use this machine with respect and caution to lessen the possibility of operator injury. If normal safety precautions are overlooked or ignored, serious personal injury may occur.

## **CAUTION**

No list of safety guidelines can be complete. Every shop environment is different. Always consider safety first, as it applies to your individual working conditions. Use this and other machinery with caution and respect. Failure to do so could result in serious personal injury, damage to equipment, or poor work results.

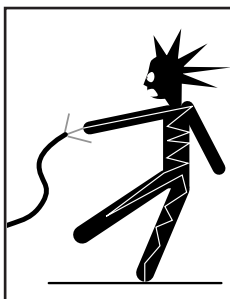


# SECTION 2: CIRCUIT REQUIREMENTS

## 110V Operation

### ⚠ WARNING

Serious personal injury could occur if you connect the machine to power before completing the setup process. **DO NOT** connect the machine to the power until instructed later in this manual.



### ⚠ WARNING

Electrocution or fire could result if machine is not grounded and installed in compliance with electrical codes. Compliance **MUST** be verified by a qualified electrician!

### ⚠ WARNING

Reduce the risk of electrocution by keeping all connections dry and off the ground. **DO NOT** touch plugs with wet hands. Failure to follow these warnings could result in serious injury.

### Full Load Amperage Draw

This machine draws the following amps under maximum load:

Amp Draw..... 3.75 Amps

### Power Supply Circuit Requirements

You **MUST** connect your machine to a grounded circuit that is rated for the amperage given below. Never replace a circuit breaker on an existing circuit with one of higher amperage without consulting a qualified electrician to ensure compliance with wiring codes. **If you are unsure about the wiring codes in your area or you plan to connect your machine to a shared circuit, consult a qualified electrician.**

Minimum Circuit Size..... 15 Amps



### Power Connection Device

The Model H3118 comes with a 5-15 plug, similar to **Figure 1**, to connect the machine to power.

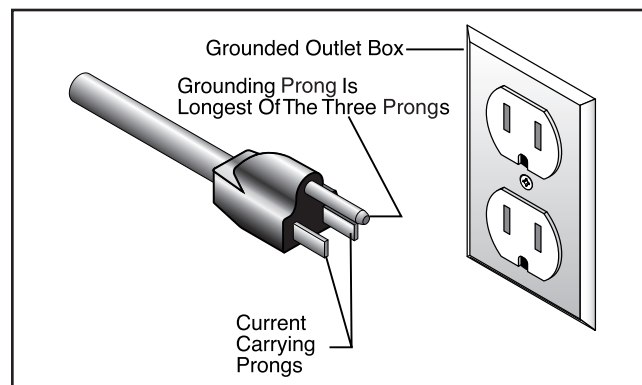
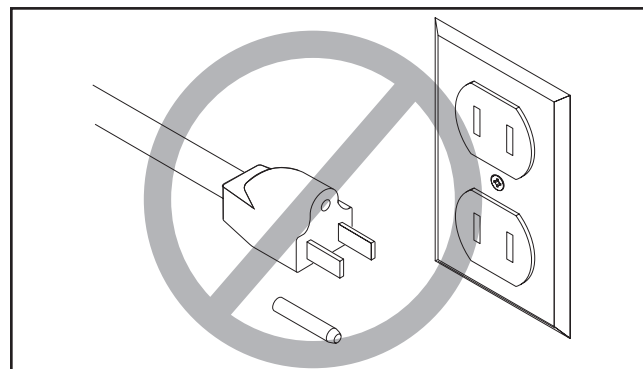


Figure 2. Typical 5-15 plug and receptacle.



### ⚠ CAUTION

This machine **MUST** have a ground prong in the plug to help ensure that it is grounded. **DO NOT** remove ground prong from plug to fit into a two-pronged outlet! If the plug will not fit the outlet, have the proper outlet installed by a qualified electrician.

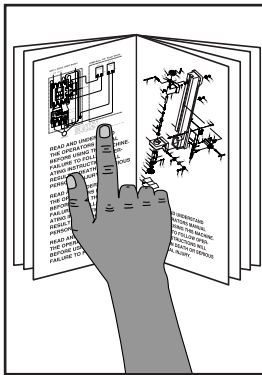
### Extension Cords

We do not recommend using extension cords, but if you find it absolutely necessary:

- Use at least a 16 gauge cord that does not exceed 50 feet in length!
- The extension cord must have a ground wire and plug pin.
- A qualified electrician **MUST** size cords over 50 feet long to prevent motor damage.

# SECTION 3: SETUP

## Setup Safety



**!WARNING**

This machine presents serious injury hazards to untrained users. Read through this entire manual to become familiar with the controls and operations before starting the machine!

## Unpacking

Your machine was carefully packaged for safe transportation. Remove the packaging materials from around your machine and inspect it. If you discover the machine is damaged, *please immediately call Customer Service at (570) 546-9663 for advice.*

Save the containers and all packing materials for possible inspection by the carrier or its agent. *Otherwise, filing a freight claim can be difficult.*

When you are completely satisfied with the condition of your shipment, inventory the contents.

## Inventory

The following is a description of the main components shipped with your machine. Lay the components out to inventory them.

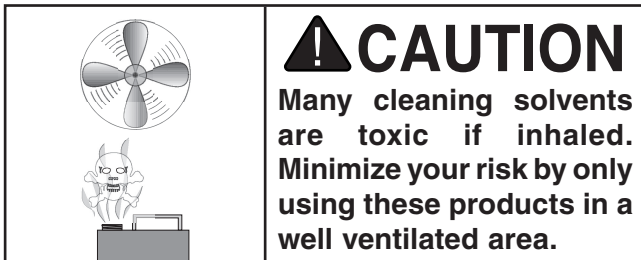
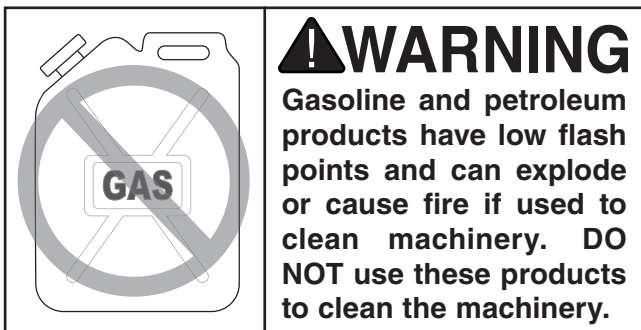
**Note:** *If you can't find an item on this list, check the mounting location on the machine or examine the packaging materials carefully. Occasionally we pre-install certain components for shipping purposes.*

Inventory	Qty
A. Tile Saw.....	1
B. Rubber Feet .....	4
C. Blade Guard Assembly .....	1
D. Arbor Wrenches .....	2



# Clean Up

The unpainted surfaces are coated with a waxy oil to prevent corrosion during shipment. Remove this protective coating with a solvent cleaner or citrus-based degreaser such as Grizzly's G7895 Citrus Degreaser. To clean thoroughly, some parts must be removed. **For optimum performance from your machine, clean all moving parts or sliding contact surfaces.** Avoid chlorine-based solvents, such as acetone or brake parts cleaner that may damage painted surfaces. Always follow the manufacturer's instructions when using any type of cleaning product.



## G7895—Grizzly Citrus Degreaser

This natural, citrus-based degreaser is a great solution for removing export grease, and it's much safer to work around than nasty solvents.



Figure 3. Grizzly citrus degreaser.

# Site Considerations

## Workbench Load

Refer to the **Machine Data Sheet** for the weight and footprint specifications of your machine. The H3118 is a small weight load with a small footprint. Most workbenches should be sufficient to carry the weight of the machine. Reinforce the workbench if you question its ability to support the weight.

## Placement Location

Consider existing and anticipated needs, size of material to be processed through each machine, and space for auxiliary stands, work tables or other machinery when establishing a location for your new machine. The model H3118 may splash water around the work area. **DO NOT** let water from the operation of the tile saw get on or near any other electrical machines or tools. Keep a safe distance between the Model H3118 and all other electrical machines and tools.

## Lighting

Lighting should be bright enough to eliminate shadows and prevent eye strain. Electrical circuits should be dedicated or large enough to handle combined motor amp loads. Be sure to follow local electrical codes for proper installation of new lighting or circuits.



# Assembly

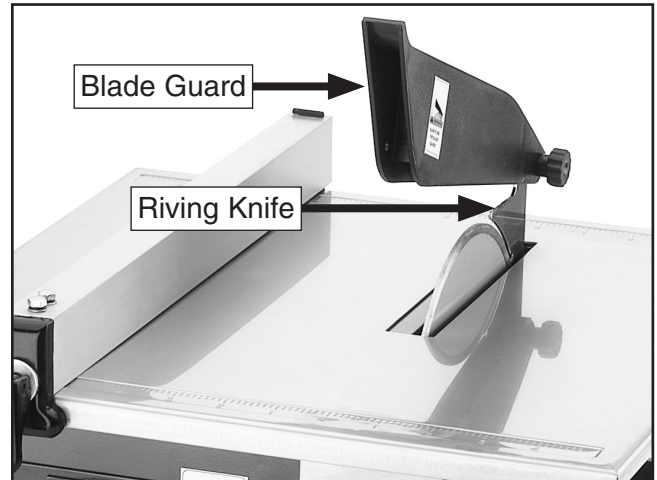
The Model H3118 comes pre-assembled from the factory except for the blade guard and the four rubber feet that need to be inserted into the base, as shown in **Figure 4**. Dip the rubber feet into soapy water to ease the installation.

**Note:** Do not twist the feet during installation. They could break. Use only a wiggling action.



**Figure 4.** Attaching the rubber feet

To attach the blade guard, loosen the knob on the blade guard assembly. Mount the blade guard to the riving knife behind the saw blade and re-tighten the knob, as shown in **Figure 5**.

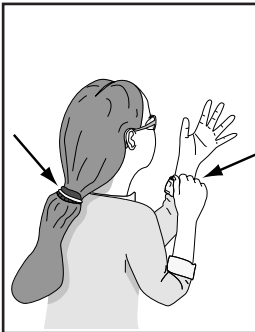


**Figure 5.** Mounting the blade guard to the riving knife.

# Test Run

## ⚠️ WARNING

Operating, plugging, or unplugging any electrical machine into a power source with wet hands or feet could cause electrocution. Dry off hands and power plug, and make sure feet and ground are dry before plugging or unplugging any electrical machine into a power source.



## ⚠️ WARNING

Loose hair, clothing, or jewelry could get caught in machinery and cause serious personal injury. Keep these items away from moving parts at all times to reduce this risk.



## ⚠️ WARNING

Projectiles thrown from the machine could cause serious eye injury. Wear safety glasses at all times.

Once the assembly is complete, test run your machine to make sure it runs properly and is ready for regular operation.

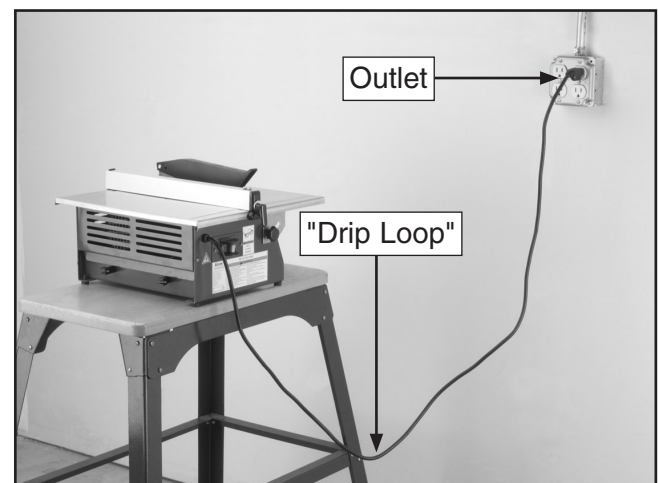
The test run consists of verifying the following: 1) The motor powers up and runs correctly, and 2) the safety disabling mechanism works correctly.

If, during the test run, you cannot easily locate the source of an unusual noise or vibration, stop using the machine immediately, then review **Troubleshooting** on **Page 17**.

If you still cannot remedy a problem, contact our Tech Support at (570) 546-9663 for assistance.

### To test run the machine:

1. Make sure you have read the safety instructions at the beginning of the manual and that the machine is setup properly.
2. Make sure all tools and objects used during setup are cleared away from the machine.
3. Make sure the lower blade guard is installed and is covering the blade above the table surface.
4. Make sure the blade cover is installed and is covering the blade below the table.
5. With dry hands, a dry plug, and dry feet, connect the machine to the power source. Make sure the cord is positioned in a "drip loop," as shown in **Figure 6**. A drip loop is created when the cord is positioned below the level of the outlet. This prevents water from running down the cord and into the outlet. Instead, the water will drip into the floor at the "drip loop" on the cord.



**Figure 6.** "Drip loop" below the level of the outlet.



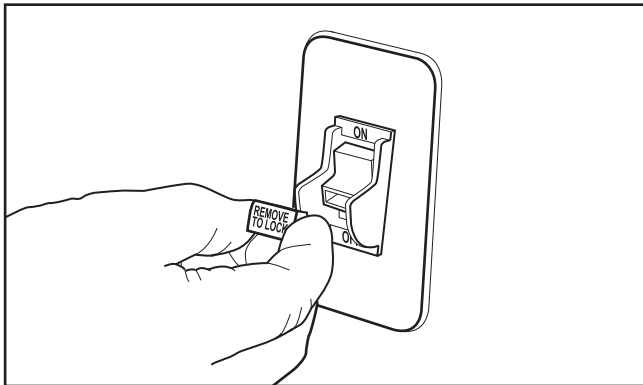


6. If not already installed, plug the switch key into the power switch. Verify that the machine is operating correctly by turning the machine **ON**.

—When operating correctly, the machine runs smoothly with little or no vibration or rubbing noises.

—Investigate and correct strange or unusual noises or vibrations before operating the machine further. Always disconnect the machine from power when investigating or correcting potential problems.

7. Turn the machine **OFF**.
8. Remove the switch disabling key, as shown in **Figure 7**.



**Figure 7.** Removing switch key from toggle switch.

9. Try to turn the start the machine by flipping the toggle switch to the **ON** position.
- If the machine does not start, the switch disabling feature is working as designed.
- If the machine starts, immediately stop the machine. The switch disabling feature is not working correctly. This safety feature must work properly before proceeding with regular operations. Call Tech Support for help.

## Lubrication

Water is used to cool and lubricate the saw blade when cutting tile. Water also reduces the amount of tile dust produced. Fill the water tray with water before making any tile cuts. The water level should be above the blade cover base when the water tray is under the saw as shown in **Figure 8**.

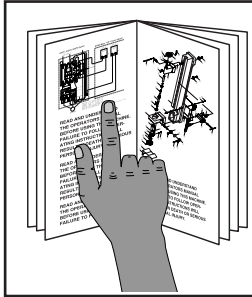


**Figure 8.** Correct water level.



# SECTION 4: OPERATIONS

## Operation Safety

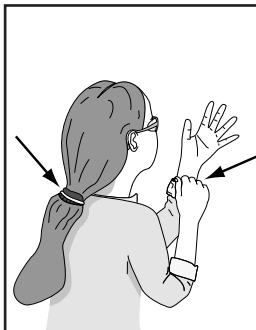
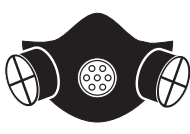


### !WARNING

To reduce the risk of serious injury when using this machine, read and understand this entire manual before beginning any operations.

### !WARNING

Damage to your eyes, lungs, and ears could result from using this machine without proper protective gear. Always wear safety glasses, a respirator, and hearing protection when operating this machine.



### !WARNING

Loose hair, clothing, or jewelry could get caught in machinery and cause serious personal injury. Keep these items away from moving parts at all times to reduce this risk.

## NOTICE

If you have never used this type of machine or equipment before, WE STRONGLY RECOMMEND that you read books, trade magazines, or get formal training before beginning any projects. Regardless of the content in this section, Grizzly Industrial will not be held liable for accidents caused by lack of training.

## Cutting

To make a cut:

1. Using a marking pencil, mark the cut line on a piece of tile.
2. Unlock the rip fence (**Figure 9**) and slide it to the edge of the table.



Figure 9. Rip fence locking lever.

3. Line up the cut line on the tile with the saw blade.
4. Adjust the rip fence against the edge of the tile and lock the rip fence into position.
5. Turn the saw **ON** and allow it to reach full speed. Be sure the blade runs smoothly. The blade should also be wet from the water tray below the saw.
6. Keeping your fingers out of the cutting path, slowly slide the tile into the moving blade.

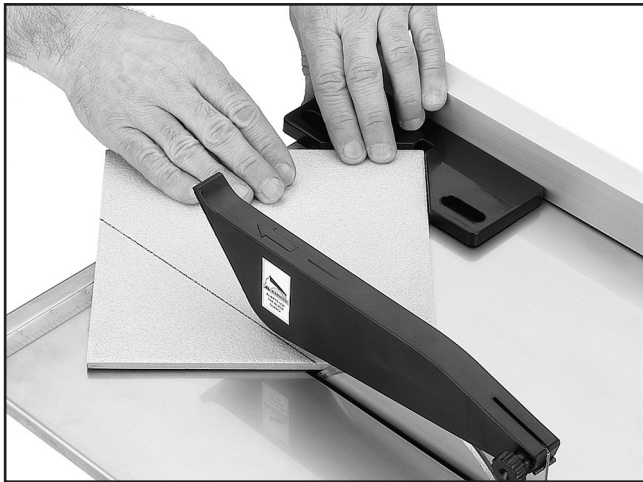
**Note:** DO NOT feed the tile into the blade too fast. If the motor sounds like it is slowing down during the cut, you are feeding the tile too fast. Slow down the feed rate immediately.





# 45° Miter Cutting

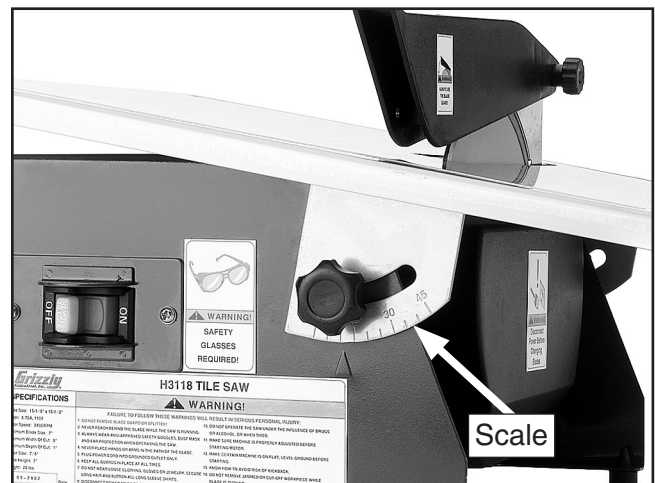
Diagonal cuts of 45° can be made on rectangular tiles using the supplied miter gauge. **Figure 10** shows a typical setup for cutting the corner off of a square tile.



**Figure 10.** Diagonal cutting with the miter gauge.

# Bevel Cutting

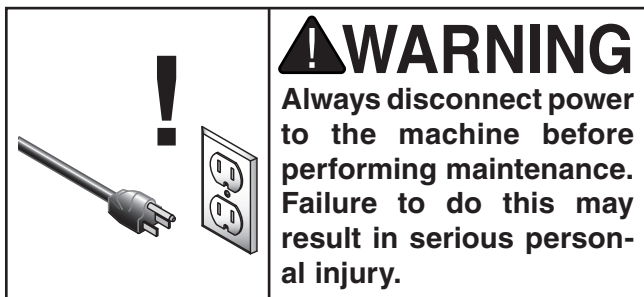
The saw table can be tilted up to 45° to accommodate bevel cutting. Loosen the knob on the front of the saw to adjust the saw table, as shown in **Figure 11**. Use the scale on the front of the saw to set the desired table tilt angle. Retighten the knob to secure the table.



**Figure 11.** Tilting the table for bevel cutting.



# SECTION 5: MAINTENANCE



## General

For optimum performance from your machine, follow this maintenance schedule and refer to any specific instructions given in this section.

### Daily Check:

- Loose mounting bolts.
- Damaged saw blade.
- REPLACE worn or damaged wires, plugs or switches. DO NOT repair.
- Conditions allowing prolonged exposure of the motor and electrical components to water.
- Blade guard alignment and operation.
- Any other unsafe condition.

## Blade Changes

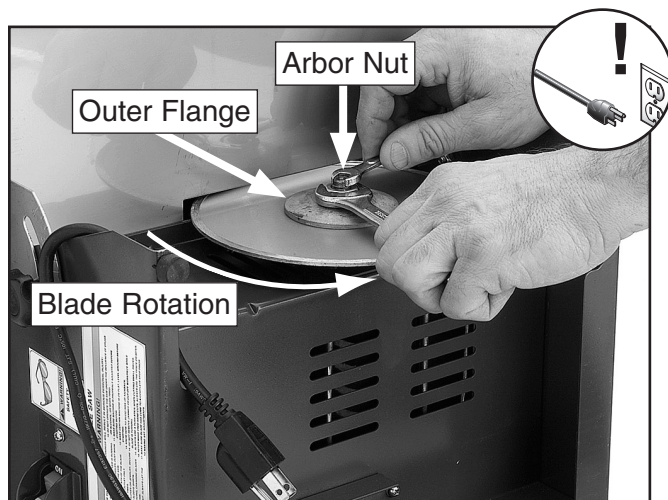
### To change/install the blade:

1. DISCONNECT THE MACHINE FROM POWER!
2. Remove the water tray from underneath the tile saw.
3. Remove the lower blade cover by removing the screws on each side, as shown in **Figure 12**.



**Figure 12.** Removing blade cover screws.

4. Using the supplied arbor wrenches or 8 and 19mm open-end wrenches, loosen and remove the arbor nut from the motor spindle, as shown in **Figure 13**.



**Figure 13.** Removing the arbor nut.

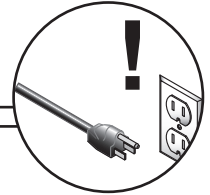
5. Slide the arbor flange (**Figure 13**) and the saw blade off the end of the motor spindle.
6. Slide the new blade and the outer flange over the end of the spindle. Make sure that the directional arrow printed on the saw blade is pointing in the same counterclockwise direction as **Figure 13**.
7. Thread and tighten the arbor nut onto the motor spindle to secure the saw blade.
8. Re-install the blade cover.



# SECTION 6: SERVICE

Review the troubleshooting and procedures in this section to fix or adjust your machine if a problem develops. If you need replacement parts or you are unsure of your repair skills, then feel free to call our Technical Support at (570) 546-9663.

## Troubleshooting

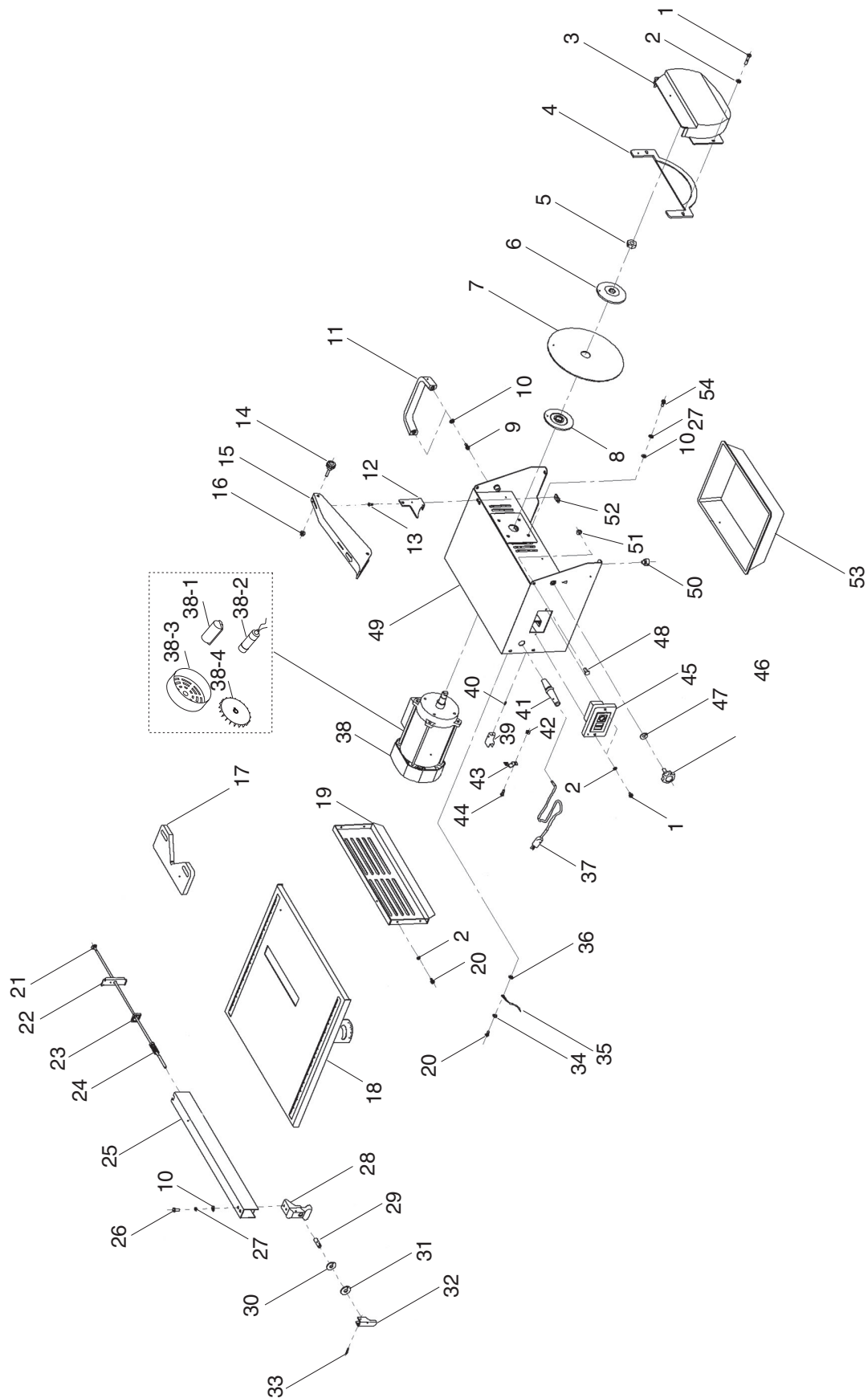


### Motor & Electrical

Symptom	Possible Cause	Possible Solution
The motor gets hot.	1. The ventilation slots in the motor are blocked with dust.	1. Clean the ventilation slots.
The machine does not work.	1. The disabling key is not installed. 2. The power supply source is being interrupted.	1. Insert disabling key in power switch. 2. Check power supply cord connection and/or breaker.



# Parts Breakdown



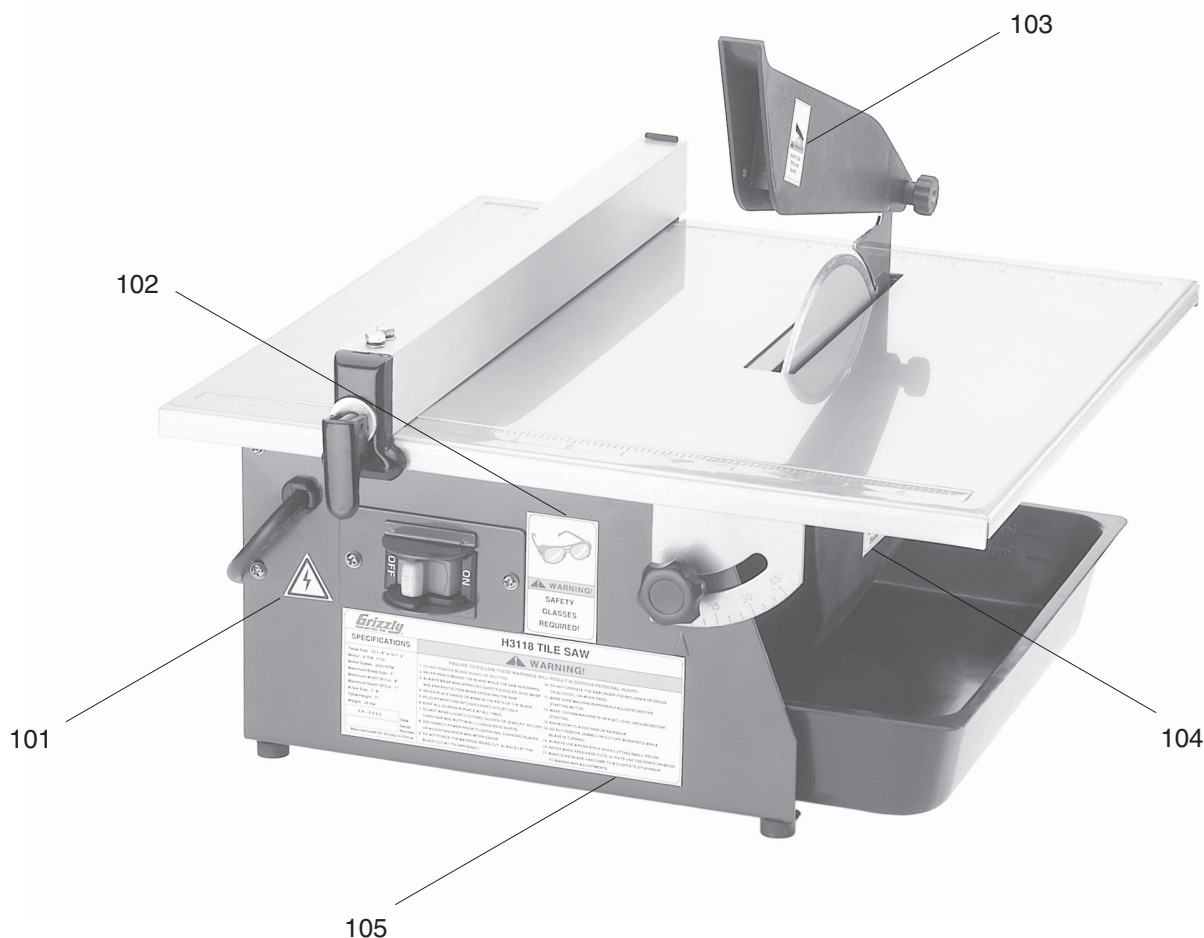
# Parts List

REF	PART #	DESCRIPTION
1	PS38M	PHLP HD SCR M4-.7 X 10
2	PW05M	FLAT WASHER 4MM
3	PH3118003	LOWER BLADE COVER
4	PH3118004	LOWER GUARD PLATE
5	PN31M	HEX NUT M12-1.5
6	PH3118006	OUTER FLANGE
7	PH3118007	BLADE
8	PH3118008	INNER FLANGE
9	PS09M	PHLP HD SCR M5-.8 X 10
10	PW02M	FLAT WASHER 5MM
11	PH3118011	HANDLE
12	PH3118012	RIVING KNIFE
13	PFH19M	FLAT HD SCR M4-.7 X 10
14	PH3118014	KNOB M5-.8
15	PH3118015	BLADE GUARD
16	PN06M	HEX NUT M5-.8
17	PH3118017	MITER GUARD
18	PH3118018	TABLE
19	PH3118019	REAR COVER
20	PS07M	PHLP HD SCR M4-.7 X 8
21	PH3118021	CLAMP ROD
22	PH3118022	MOVING CLAMP
23	PH3118023	SQUARE SPACER
24	PH3118024	COMPRESSION SPRING
25	PH3118025	FENCE
26	PB96M	HEX BOLT M5-.8 X 10
27	PLW01M	LOCK WASHER 5MM
28	PH3118028	LOCKING LEVER
29	PH3118029	CONNECTION PIN

REF	PART #	DESCRIPTION
30	PH3118030	RUBBER WASHER
31	PW01M	FLAT WASHER 8MM
32	PH3118032	CLAMP LEVER
33	PRP02M	ROLL PIN 3 X 16
34	PLW02M	LOCK WASHER 4MM
35	PH3118035	GROUND WIRE CONNECTION
36	PTLW01M	EXT TOOTH WASHER 4MM
37	PH3118037	POWER CORD 110V, W/5-15 PLUG
38	PH3118038	MOTOR 1HP 110V
38-1	PH3118038-1	CAPACITOR COVER
38-2	PH3118038-2	CAPACITOR 20M 250V 1-1/2 X 2-5/8
38-3	PH3118038-3	FAN COVER
38-4	PH3118038-4	FAN
39	PH3118039	CORD STORAGE
40	PHTEK11M	TAP SCREW M3 X 8
41	PH3118041	STRAIN RELIEF
42	PN04M	HEX NUT M4-.7
43	PH3118043	FIXED CLAMP
44	PS38M	PHLP HD SCREW M4-.7 X 10
45	PH3118045	SWITCH ASSEMBLY
46	PH3118046	KNOB M6-1
47	PW03M	FLAT WASHER 6MM
48	PB02M	HEX BOLT M6-1 X 12
49	PH3118049	FRAME
50	PH3118050	RUBBER FOOT
51	PLN03M	LOCK NUT M6-1
52	PH3118052	SPECIAL NUT M4-.7
53	PH3118053	WATER TRAY
54	PS40M	PHLP HD SCR M5-.8 X 16



# Label Placement and List



REF	PART #	DESCRIPTION
101	PLABEL-14	ELECTRICITY LABEL
102	PLABEL-11	SAFETY GLASSES 2" X 3 5/16"
103	PH3118103	BLADE GUARD WARNING

REF	PART #	DESCRIPTION
104	PH3118104	UNPLUG LABEL
105	PH3118105	MACHINE ID/WARNING

## WARNING

Safety labels warn about machine hazards and ways to prevent injury. The owner of this machine **MUST** maintain the original location and readability of the labels on the machine. If any label is removed or becomes unreadable, **REPLACE** that label before using the machine again. Contact Grizzly at (800) 523-4777 or [www.grizzly.com](http://www.grizzly.com) to order new labels.





# WARRANTY CARD

Name \_\_\_\_\_

Street \_\_\_\_\_

City \_\_\_\_\_ State \_\_\_\_\_ Zip \_\_\_\_\_

Phone # \_\_\_\_\_ Email \_\_\_\_\_ Invoice # \_\_\_\_\_

Model # \_\_\_\_\_ Order # \_\_\_\_\_ Serial # \_\_\_\_\_

The following information is given on a voluntary basis. It will be used for marketing purposes to help us develop better products and services. **Of course, all information is strictly confidential.**

1. How did you learn about us?

\_\_\_\_\_ Advertisement

\_\_\_\_\_ Friend

\_\_\_\_\_ Catalog

\_\_\_\_\_ Card Deck

\_\_\_\_\_ Website

\_\_\_\_\_ Other:

2. Which of the following magazines do you subscribe to?

\_\_\_\_\_ Cabinet Maker

\_\_\_\_\_ Popular Mechanics

\_\_\_\_\_ Today's Homeowner

\_\_\_\_\_ Family Handyman

\_\_\_\_\_ Popular Science

\_\_\_\_\_ Wood

\_\_\_\_\_ Hand Loader

\_\_\_\_\_ Popular Woodworking

\_\_\_\_\_ Wooden Boat

\_\_\_\_\_ Handy

\_\_\_\_\_ Practical Homeowner

\_\_\_\_\_ Woodshop News

\_\_\_\_\_ Home Shop Machinist

\_\_\_\_\_ Precision Shooter

\_\_\_\_\_ Woodsmith

\_\_\_\_\_ Journal of Light Cont.

\_\_\_\_\_ Projects in Metal

\_\_\_\_\_ Woodwork

\_\_\_\_\_ Live Steam

\_\_\_\_\_ RC Modeler

\_\_\_\_\_ Woodworker West

\_\_\_\_\_ Model Airplane News

\_\_\_\_\_ Rifle

\_\_\_\_\_ Woodworker's Journal

\_\_\_\_\_ Modeltec

\_\_\_\_\_ Shop Notes

\_\_\_\_\_ Other:

\_\_\_\_\_ Old House Journal

\_\_\_\_\_ Shotgun News

3. What is your annual household income?

\_\_\_\_\_ \$20,000-\$29,000

\_\_\_\_\_ \$30,000-\$39,000

\_\_\_\_\_ \$40,000-\$49,000

\_\_\_\_\_ \$50,000-\$59,000

\_\_\_\_\_ \$60,000-\$69,000

\_\_\_\_\_ \$70,000+

4. What is your age group?

\_\_\_\_\_ 20-29

\_\_\_\_\_ 30-39

\_\_\_\_\_ 40-49

\_\_\_\_\_ 50-59

\_\_\_\_\_ 60-69

\_\_\_\_\_ 70+

5. How long have you been a woodworker/metalworker?

\_\_\_\_\_ 0-2 Years

\_\_\_\_\_ 2-8 Years

\_\_\_\_\_ 8-20 Years

\_\_\_\_\_ 20+ Years

6. How many of your machines or tools are Grizzly?

\_\_\_\_\_ 0-2

\_\_\_\_\_ 3-5

\_\_\_\_\_ 6-9

\_\_\_\_\_ 10+

7. Do you think your machine represents a good value?

\_\_\_\_\_ Yes

\_\_\_\_\_ No

8. Would you recommend Grizzly Industrial to a friend?

\_\_\_\_\_ Yes

\_\_\_\_\_ No

9. Would you allow us to use your name as a reference for Grizzly customers in your area?

**Note:** We never use names more than 3 times.

\_\_\_\_\_ Yes

\_\_\_\_\_ No

10. Comments: \_\_\_\_\_

\_\_\_\_\_

\_\_\_\_\_

\_\_\_\_\_

CUT ALONG DOTTED LINE



FOLD ALONG DOTTED LINE

\_\_\_\_\_

\_\_\_\_\_

\_\_\_\_\_



Place  
Stamp  
Here



GRIZZLY INDUSTRIAL, INC.  
P.O. BOX 2069  
BELLINGHAM, WA 98227-2069



FOLD ALONG DOTTED LINE

Send a Grizzly Catalog to a friend:

Name\_\_\_\_\_

Street\_\_\_\_\_

City\_\_\_\_\_State\_\_\_\_\_Zip\_\_\_\_\_

TAPE ALONG EDGES--PLEASE DO NOT STAPLE



# WARRANTY AND RETURNS

---

Grizzly Industrial, Inc. warrants every product it sells for a period of **1 year** to the original purchaser from the date of purchase. This warranty does not apply to defects due directly or indirectly to misuse, abuse, negligence, accidents, repairs or alterations or lack of maintenance. This is Grizzly's sole written warranty and any and all warranties that may be implied by law, including any merchantability or fitness, for any particular purpose, are hereby limited to the duration of this written warranty. We do not warrant or represent that the merchandise complies with the provisions of any law or acts unless the manufacturer so warrants. In no event shall Grizzly's liability under this warranty exceed the purchase price paid for the product and any legal actions brought against Grizzly shall be tried in the State of Washington, County of Whatcom.

We shall in no event be liable for death, injuries to persons or property or for incidental, contingent, special, or consequential damages arising from the use of our products.

To take advantage of this warranty, contact us by mail or phone and give us all the details. We will then issue you a "Return Number," which must be clearly posted on the outside as well as the inside of the carton. We will not accept any item back without this number. Proof of purchase must accompany the merchandise.

The manufacturers reserve the right to change specifications at any time because they constantly strive to achieve better quality equipment. We make every effort to ensure that our products meet high quality and durability standards and we hope you never need to use this warranty.

Please feel free to write or call us if you have any questions about the machine or the manual.

Thank you again for your business and continued support. We hope to serve you again soon.

# ***grizzly.com***

**TOOL WEBSITE**

**Buy Direct and Save with Grizzly® – Trusted, Proven and a Great Value!**

*Visit Our Website Today And Discover  
Why Grizzly® Is The Industry Leader!*

- **SECURE ORDERING**
- **ORDERS SHIPPED WITHIN 24 HOURS**
- **E-MAIL RESPONSE WITHIN ONE HOUR**

**-OR-**

**Call Today For A FREE  
Full Color Catalog**

**1-800-523-4777**

