

---

# Model 275 HART<sup>®</sup> Communicator Interface

- *Easy upload and download of field device information between your Model 275 HART Communicator and AMS.*
- *Retain up-to-date records of installed field devices.*
- *Improve productivity.*
- *Increase field device maintenance effectiveness.*

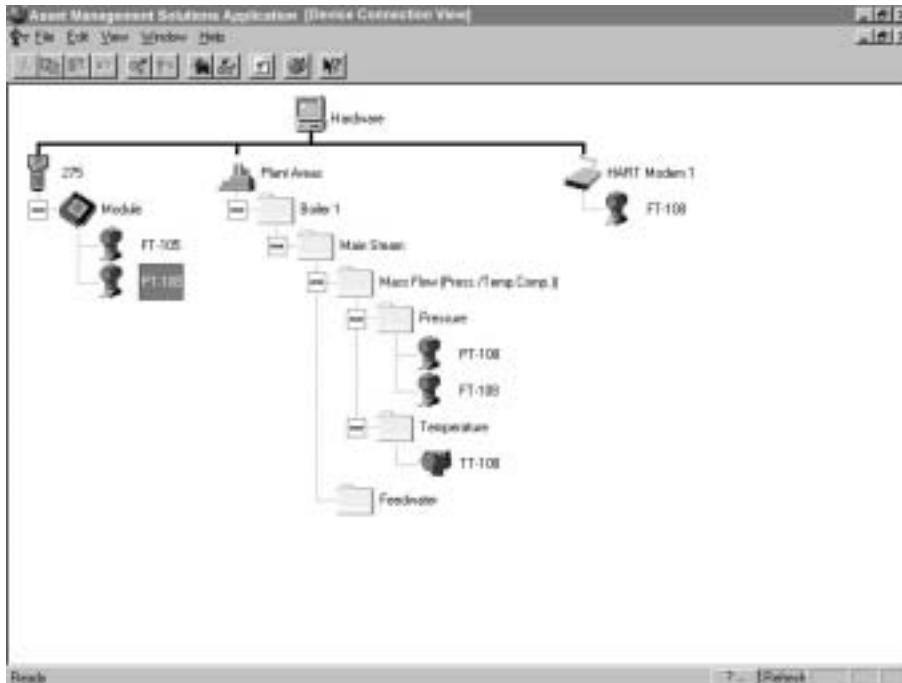


The Model 275 HART<sup>®</sup> Communicator Interface enables easy upload and download of field device information between your Model 275 HART Communicator and your PC.

## INTRODUCTION

The Model 275 HART® Communicator Interface application is an AMS option which enables you to upload and download information between the Model 275 HART Communicator and your AMS database.

With the 275 HART Communicator Interface software, you can take advantage of all of the features of AMS—including simple drag-and-drop transfer of configurations between the AMS software and the 275 HART Communicator.



The Model 275 HART Communicator Interface brings the field to the office

## Benefits

*Retain up-to-date records of installed field devices.* With the ability to upload device information from the Model 275 HART Communicator to AMS, you gain complete control over your field device information. Accurate records of device configurations can be invaluable in showing your compliance to regulatory requirements. Information from your Model 275 HART Communicator can be stored in your AMS database for ready access to date and time stamped field device information.

*Improve productivity with the easy drag-and-drop upload and download of field device information.* Field maintenance is now easier. The 275 HART Communicator revolutionized access to HART-resident data in your field devices. AMS revolutionizes how you manage your HART data. The 275 HART Communicator can be connected to the PC with a serial PC cable and a Model 275 Communication Adapter. Configuration changes done in AMS are easily downloaded to the 275

HART Communicator by simply dragging and dropping the configurations onto the 275 icon on the screen. Once the configurations are downloaded from AMS to the 275 HART Communicator, you are ready to go to the field to download new configurations to the field devices. With a complete field device database available, maintenance scheduling becomes faster and easier too. Configuration changes can be performed in advance so that maintenance activities can be done more effectively and proactively.

*Increase field device maintenance effectiveness through reconciling of information from the 275 HART Communicator to the database.* Once a configuration change has been made to a field device, the change is quickly and easily uploaded to AMS. The user can then review the changes to the device configuration and store them to the database.

# Asset Management Solutions

Catalog 2002 – 2003

## Specifications

AMS: Single Workstation or a Client/Server network version with the Model 275 HART Communicator Interface Option.

Audit Trail Option (Recommended).

Model 275 HART Communicator with Revision 3 firmware.

PC for Asset Management Solutions software.

Data Pack (Recommended).

## 275 Interface Kit

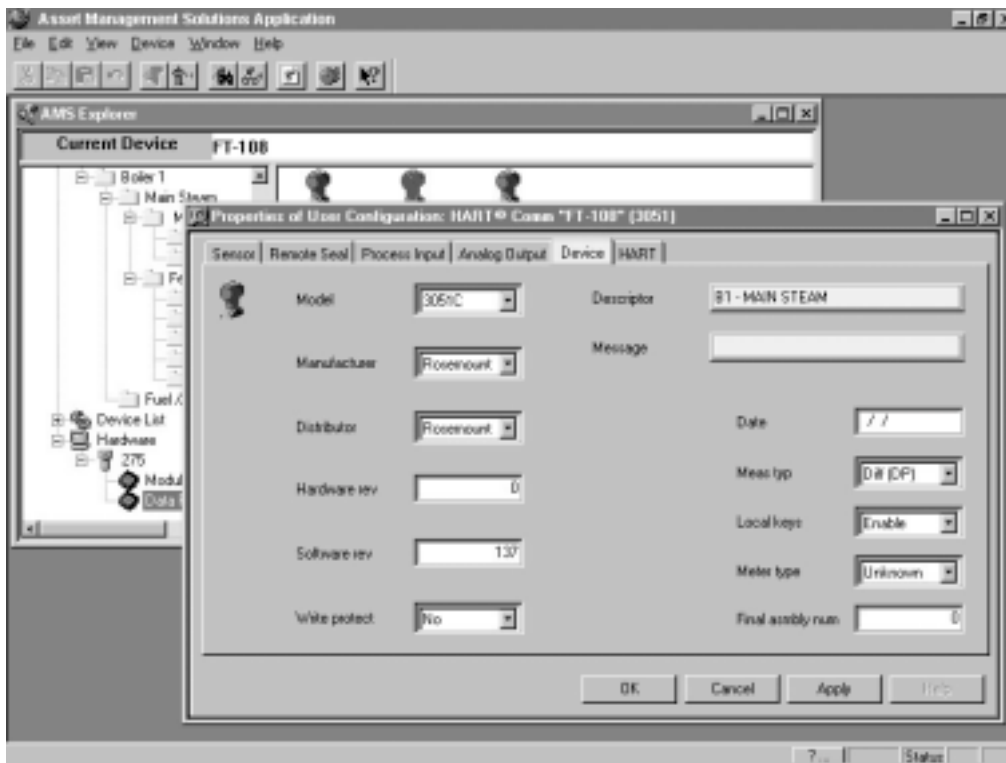
The 275 Interface Kit includes:

Model 275 HART Communicator Interface Option software

Communication Adapter.

Shielded serial PC Cable.

Upgrade of 275 HART Communicator to Revision 3 Firmware.



AMS\_0003B

The Model 275 HART Communicator Interface lets you update your Field Server database to maintain up-to-date records of field device configurations

# Asset Management Solutions

Catalog 2002 – 2003

---

*Rosemount and the Rosemount logotype are registered trademarks of Rosemount Inc.  
PlantWeb is a mark of one of the Emerson Process Management companies.  
All other marks are the property of their respective owners.*

## Emerson Process Management

**Rosemount Inc.**  
8200 Market Boulevard  
Chanhassen, MN 55317 USA  
T 1-800-999-9307  
F (952) 949-7001

[www.rosemount.com](http://www.rosemount.com)