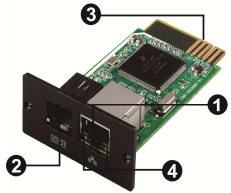
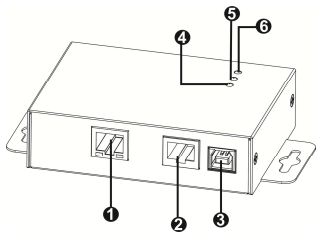


SNMP Card/Box for Hybrid Inverter Quick Guide

1. Overview



- ❶ Ethernet port (10/100Base-T)
- ❷ Sensor port
- ❸ Golden finger: connects to **device** slot
- ❹ Ethernet port status LEDs



- ❶ Ethernet port(10/100Base-T)
- ❷ **RS-232 port**
- ❸ 5Vdc DC input
- ❹ Data receiving indicator
- ❺ Data transmission indicator
- ❻ Power indicator

Ethernet port status LEDs:

100M LED (Green)	Flash	Port is operating at 100Mbit/s
	Off	Card is not connected to the network
10M LED (Yellow)	Flash	Port is operating at 10Mbit/s
	Off	Card is not connected to the network

2. Installation and Connection

If using SNMP card, please follow below steps to install SNMP card first:

Step 1: Remove the cover of intelligent slot on the back panel of device and retain the screws

Step 2: Slide the card into the open slot and secure with the screws from step 1. (see chart 2-1)

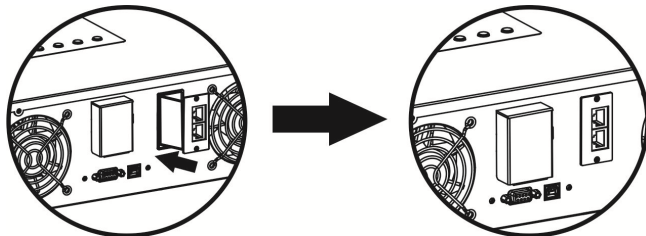


Chart 2-1

3. Connection

Refer to chart 2-2 for connecting the SNMP card and chart 2-3 for connecting SNMP box.

If using SNMP card:

Plug Ethernet cable to the Ethernet port (RJ-45) on the SNMP card. Use one more Ethernet cable. Connect one end to the sensor port on the SNMP card and the other end to the optional environmental monitoring device.

If using SNMP box:

Use one Ethernet cable to connect to Ethernet port (❶) of the box. Use one RJ45 cable to connect to RS-232 port (❷) of the box and RS-232 port of the device. Then, use bundled USB cable to connect to USB port (❸) of the box and 5V DC USB power source.

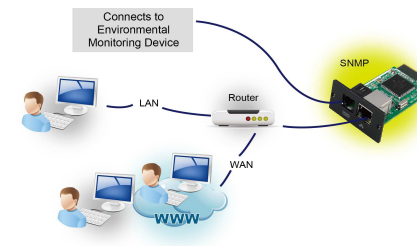


Chart 2-2

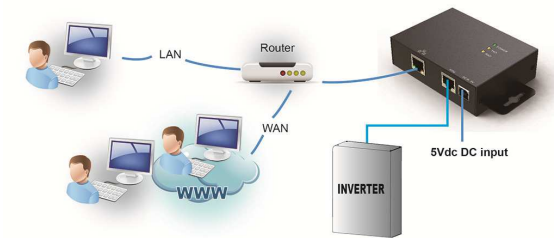


Chart 2-3

3. Configuration

- a) Please install SolarPower Pro monitoring software in your PC. After software is installed successfully, it will pop up a plug icon in the tray. SNMP manager will be automatically activated. Select "SNMP manager" by clicking right button of the mouse.



Chart 3-1

- b) Enter specific IP address to search all SNMP devices in LAN. (The SNMP manager will automatically collect the IP address from sever by default via a DHCP server. It will apply default IP address of 192.168.102.230, default subnet mask as 255.255.255.0, and default gateway as 0.0.0.0 without a DHCP server.

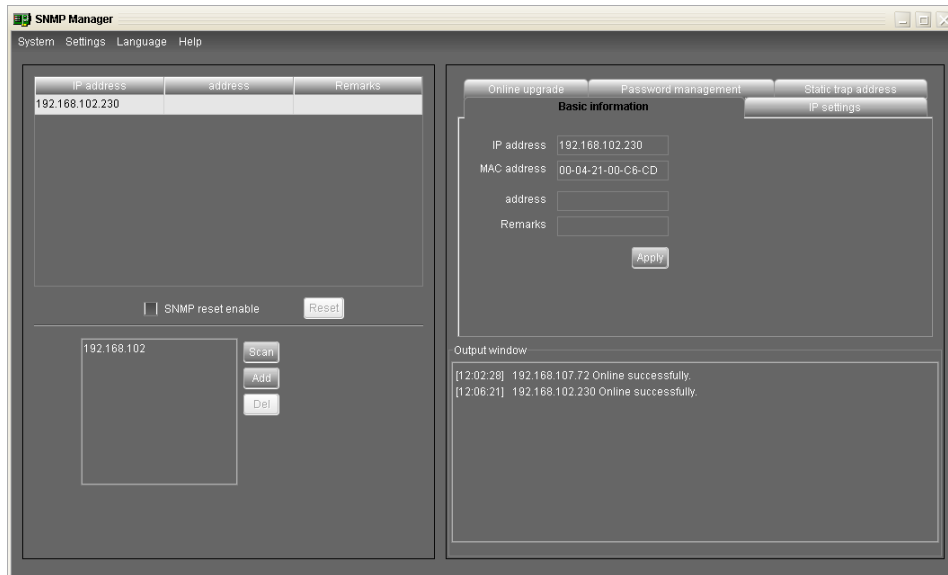


Chart 3-2

- c) User can modify IP setting, online upgrade, password management, and static trap address setting in SNMP Manager interface. It is necessary to enter password for any medications. The default password is 12345678.

4. Monitoring

As chart 4-1, select "Open URL" by clicking right button of the mouse.

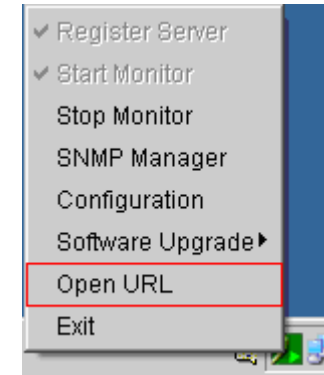


Chart 4-1

Then, it will activate SolarPower Pro software and list SNMP devices on the left side of screen. Refer to Chart 4-2.

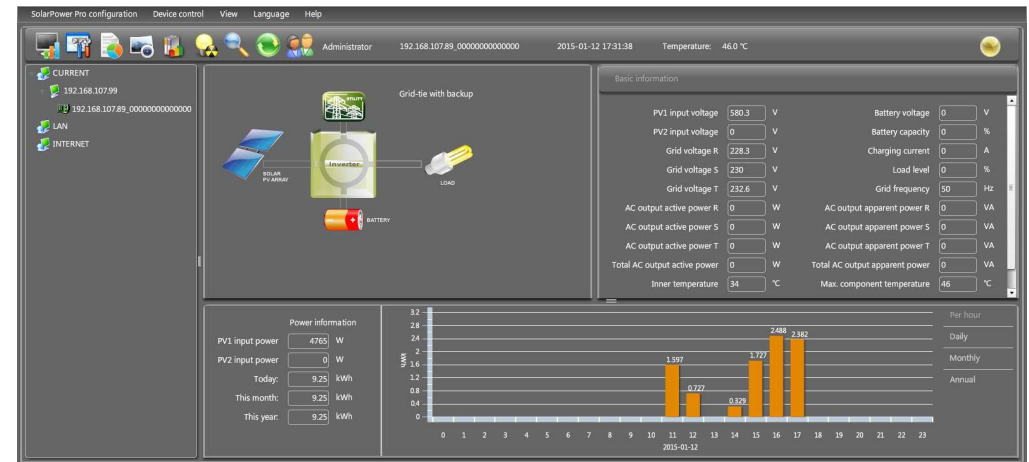


Chart 4-2

Please check SolarPower Pro software for detailed operation.

Please check SNMP Manager User Manual for detailed configuration.