

INDEX

mixing consoles

rd series	pages	4 - 5
rx series	pages	6 - 7
ultimix	pages	8 - 10

compact p.a. systems

system 200	page	12
------------	------	----

amplifiers

procon series	page	13
---------------	------	----

speakers

hurricane series	pages	16 - 19
spx series	pages	20 - 21
titanium series	pages	23 - 25
d400 - x300	page	27
cyclop EWT system	pages	28 - 29
hercules system	pages	30 - 31
pegasus system	pages	32 - 33
poseidon system	pages	34 - 35
dx editor - rs kit	page	36

digital processors

dx series	page	39
fx series	page	40

analog processors

crossover xo	page	41
--------------	------	----

wireless

L2000/L3000 series	pages	42 - 43
L200/L300	pages	44 - 45

accessories

accessories	page	46
-------------	------	----

LEM

Since 1969, LEM has been at the forefront of groundbreaking design and technology introducing innovative solutions for amplification and loud-speaker situations. The LEM approach is customer driven, with a strong international focus on the design of products to match artist and venue requirements.

With more than 30 years of continuous Research and Development LEM has been able to stay at the forefront of technology introducing 40 bit digital processors featuring the exclusive LEM DSP's. Other innovative solutions include editor software for the control of processing functions in digital integrated loudspeaker systems, high resolution 24 bit converters, custom made loudspeakers, reliable components and newest materials such as neodymium.

The strive for innovative, quality products has culminated in the current LEM range, that incorporates state-of-the-art digital processing technology.

The latest products use:

- 40 bit digital processor, featuring a proprietary LEM DSP.
- Editor software for the control of processing functions in the digital integrated loudspeaker systems.
- High resolution 24 bit converters.
- Custom made loudspeakers.
- Reliable components.
- Newest light weight materials such as neodymium, for easy portability.

Incorporating the Italian flair for design and innovation, has meant that LEM Professional Sound systems are a first choice for a wide range of applications, both indoor and outdoor: installations, concerts, gigging bands, theatres, discos and special events. When sound quality and control is an imperative, LEM should always be your first choice.



rd series

RD, LEM's new series of mixing consoles are designed to offer the most out of small PA. systems. Ideal for musicians, home recording, multimedia applications along with small permanent installations.

All RD models feature mono channels with mic/line input, phantom power supply and stereo line input channels. Each channel has a low-cut filter, 3-band EQ, 2 to 4 auxiliary sends, solo function and peak LED. RD 122 fx and RD 204 fx are also equipped with sweepable mid EQ along with insert points on all the mono channels.

All the models feature a 24bit built-in effect processor, providing high-quality REVERB, DELAY, CHORUS, FLANGER and COMBINED effects with the definition of a studio-grade effects processor. 16 PRESET banks each with 16 VARIATIONS provide an impressive total of 256 different effects.

rd 82 fx



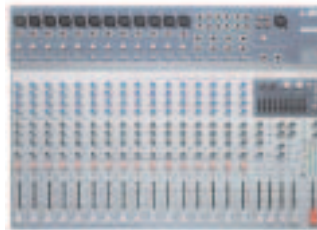
- 4 mic/line input channels with phantom power
- low cut filter
- 2 stereo input channels
- 3-band EQ
- 2 aux sends
- solo with peak LED
- 45mm sliders
- 2 stereo return on master
- 1 return on monitor out
- balanced & unbalanced master outs
- control room out
- 24bit built-in digital effect processor with 256 presets
- 12 LED bar-graphs
- 246 x 73 x 306mm (L x H x D)
- 2,9kg

rd 122 fx



- 8 mic/line input channels with phantom power
- low cut filter and insert point
- 2 stereo input channels
- 3-band Eq with sweep mid
- 3 aux sends
- solo, mute and peak LED
- ALT assign
- 60 mm sliders
- 3 stereo return on master
- 1 return on monitor out
- balanced & unbalanced master outs
- insert point on master outs
- control room out
- 24bit built-in digital effect processor with 256 presets
- 12 LED bar-graphs
- 392 x 392 x 80mm (L x H x D)
- 6kg

rd 204 fx



- 12 mic/line input channels with phantom power
- low cut filter and insert point
- 4 stereo input channels
- 3-band Eq with sweep mid
- 4 aux sends
- Solo, peak and mute functions
- 4 sub-groups routing
- 60mm sliders
- 4 stereo return on master
- 4 return on monitor out
- balanced & unbalanced master outs
- insert point on master outs
- 4 groups out
- control room out
- 24bit built-in digital effect processor with 256 presets
- 9 bands graphic eq on master out
- 12V lamp connector
- 12 LED bargraphs
- 580 x 95 x 410 mm (L x H x D)
- 9 kg

carry bag



To compliment the portability and design style of the RD series, a padded gig bag is supplied with every rd series mixer.

rx series

A perfect combination of power and professional features you would typically expect from larger mixing consoles, the new RX powered mixers incorporate the most advanced up-to-date technology, optimised to provide the best in all kinds of LIVE applications.

All models offer a mixer section designed with no compromises, able to guarantee absolute fidelity and high precision of the signal treatment. The dynamic and rugged power amplifiers are designed to supply their maximum power output continuously so you can freely perform to your full potential.

All models feature a high quality 24bit DSP, providing studio-grade REVERB, DELAY, CHORUS, FLANGER and COMBINED effects. 16 PRESET banks each with 16 VARIATIONS provide an impressive total of 256 different effects. (16 effects in RX 200).

rx 200

4 mono MIC/LINE input channels
2 stereo LINE input channels
3-band Eq
1 aux send
phantom power
24bit built-in digital effect processor
With 16 presets
built-in power amplifier
100+100W on 4 Ohm
257 x 277 x 102mm (L x H x D)
5kg

rx 300

4 mono MIC/LINE input channels
phantom power
2 stereo MIC/LINE input channels
3-band Eq
2 aux sends
PFL and peak LED
45mm sliders
1 stereo return with monitor routing
speaker processor on the main outs
with high and low enhancer
master out with insert and mono out
24 bit built-in digital effect processor
with 256 presets
8 LED bargraphs
built-in power amplifier
150 + 150W on 8 Ohm
anti-clipping circuit
364 x 149 x 390mm (L x H x D)
8kg

rx 700 new

8 mono MIC/LINE input channels
with low cut filter
phantom power
2 stereo MIC/LINE input channels
3-band Eq with sweep mid
3 aux sends
PFL and peak LED
60mm sliders
1 stereo return with monitor routing
speaker processor on the main outs
with high and low enhancer
master out with insert and mono out
24 bit built-in digital effect processor
with 256 presets
16 LED bargraphs
built-in power amplifier
350 + 350W on 4 Ohm
anti-clipping circuit
495 x 115 x 445 mm (L x H x D)
kg12,6

carry bag

To compliment the portability and design style of the rx series, a padded gig bag is supplied with every powered mixer.

ultimix new

Ultimix is the most complete compact mixer we feel available on the market, incorporating all the features and professional specifications required by demanding sound engineers. Providing 20 inputs and 13 outputs, ultimix offers the most advanced functions available in this class of mixer. The 100mm faders, the insert points, the low-noise high-definition mic preamps, the built-in switching power supply, all define this console as truly a category leader. In addition, ultimix is packed with an amazing set of "extra" features, allowing you to expand your creative dreams. This extra feature set includes: "dynamics" – help you to control the level of your microphones, state-of-the-art "intelligent eq" for all the channels and the monitor sends, two built-in "high quality stereo effects" with editing to create individual favourite studio quality reverbs, "15-band stereo graphic

ultimix

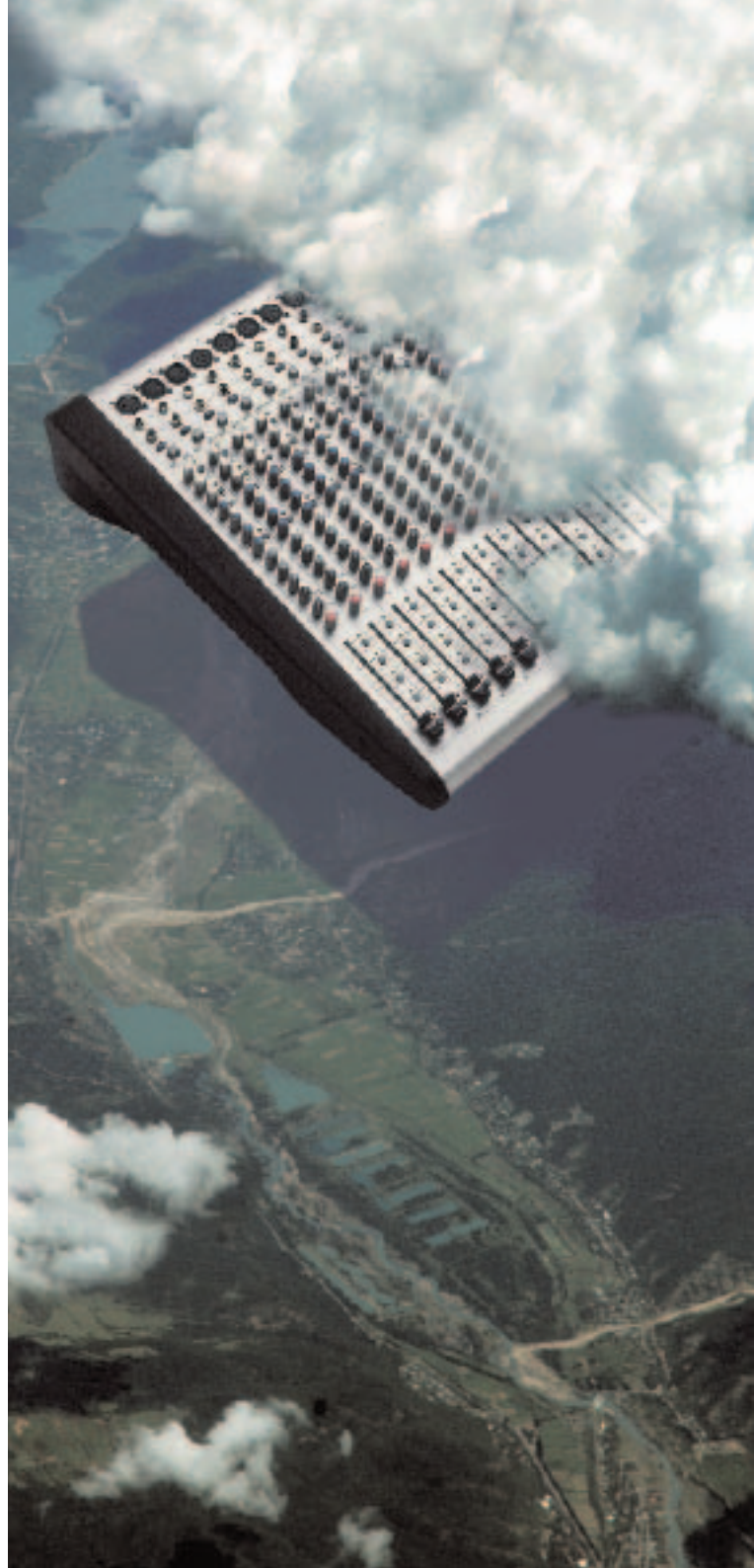
eq" on the master outputs to shape your sound in a precise way, "mute groups" to switch on or off your channels with a single finger touch, "stereo digital input" allowing digital audio connection of your cd, minidisc player or pc without any loss to the signal and "stereo digital output" for achieving amazing live recordings. Ultimix has everything you could possibly need to mix at the highest quality, all in one convenient package without having to add external devices into the signal path. Ultimix is the first 100% digital mixer using traditional analog faders and knobs to provide a familiar user interface. Incorporating 24bit low-noise converters and 40bit processing power, it provides efficient and precise audio mixing . When installations or live applications require the most accurate and flexible all in one mixing solution, Ultimix is the ideal choice!



ultimix

20 inputs
12 mono channels, 4 stereo channels, 16 mic inputs
insert on each mono channel
compressor and noise gate on each mono channel
with gain reduction display
3-band intelligent eq with low cut on each channel, including
a very steep high shelving, accurate sweep mid and low shelving
with proportional lo-mid cut
3 monitor sends (pre-fader) and 2 effect sends (pre/post-fader)
mute and solo function
100mm high quality faders
3 monitor sends with intelligent eq (hfp, lpf plus 2 notch filters)
4 sub-groups with mix l&r routing
mix 2 and control room outputs
analog and digital (optical + coaxial) 2-track in and 2-track out
4 mute groups
built-in dual stereo effect processor with editing and 32+32 user memories
2 effect returns with 60mm fader and routing to monitors
built-in stereo 15-band graphic eq with 16 user memories
24bit low-noise adc and dac converters
40bit processing
+20db max input signal and +20db max output signal
lamp socket
internal switching power supply (110-240v)
rugged metal chassis
flight-case included
770 x 138 x 510 mm (L x H x P)
15,5 kg

rear panel



system 200

System 200 is an extremely compact amplification system including a RX 200 powered mixer, two reliable PFM 10.2 loudspeakers, a LM20 dynamic microphone and a complete set of connection cables.

The System 200 is a package designed for small PA applications requiring fast, convenient and simple transport and set up. It's the ideal PA solution for small live performances, venues, recorded music, or conference room applications.

system 200



rx 200 powered mixer

- 4 mono input channels
- 2 stereo input channels
- phantom power
- 3-band Eq
- 1 aux send
- 24bit built-in digital effect processor
- 16 presets
- built-in power amplifier
- 100+100 W on 4 Ohm
- 257 x 277 x 102mm (L x H x D)
- 5kg

loudspeakers

- 2 pfm 10.2 on 4 Ohm**
- 10" woofer
- horn loaded tweeter
- 100W at 4 Ohm
- 340 x 458 x 285mm (L x H x D)
- 9kg

LM20 dynamic mic

- with cardioids polar pattern
- ideal for vocal use

microphone and speakers cables also included

procon series

Procon power amplifiers have been designed to provide great efficiency, dynamics and reliability at a very affordable price.

The accurately designed circuitry and the selected components offer an excellent sound quality with high fidelity audio reproduction in a metal chassis that ensures maximum sturdiness.

procon 400



2 x 200W on 4 Ohm, 2 x 125W on 8 Ohm, 2 rack units, 11kg

procon 750



2 x 375W on 4 Ohm, 2 x 215W on 8 Ohm, 2 rack units, 12,8kg

procon 950



2 x 475W on 4 Ohm, 2 x 275W on 8 Ohm, 2 rack units, 14,6kg

procon 1250



2 x 625W on 4 Ohm, 2 x 375W on 8 Ohm, 2 rack units, 18kg

procon 1500



2 x 750W on 4 Ohm, 2 x 450W on 8 Ohm, 2 rack units, 20kg

hurricane series **new**

Hurricane loudspeakers are the perfect combination of good, solid sound with impressive affordability.

In designing the hurricane series, our engineers selected the best lightweight quality / value cabinets to provide a sturdy solution with maximum shock resistance. For the high frequency reproduction, compression drivers mounted on our proprietary EWT horn (Elliptical Waveguide Technology) provide stunning clarity. High-excursion woofers, with the use of large voice coils are able to tolerate extreme temperatures, featuring an impressive low distortion, even at very high sound pressure levels. No compromise was made in the crossover filterdesign: oversized high-quality components, carefully selected and tested for continuous endurance, ensure the lowest distortion and highest filtering capabilities. The hurricane series includes 16 models, offering one of the widest selection in this class, covering all application requirements you may have.

H150/H150A



1" compression driver on EWT horn
10" woofer with 2" voice coil
frequency response 60~20kHz
Spl max 117 dB
composite wooden cabinet
with carpet and metal grill
340x460x285 mm (WxHxD)

H150
8 Ohm impedance
150W AES power handling
14 Kg

H150A
150W built-in amplifier
18 Kg

H200/H200A



1" compression driver on EWT horn
12" woofer with 2" voice coil
frequency response 50~20kHz
Spl max 120 dB
composite wooden cabinet
with carpet and metal grill
390x508x325 mm (WxHxD)

H200
8 Ohm impedance
200W AES power handling
17 Kg

H200A
200W built-in amplifier
22 Kg

H300/H300A



1" compression driver on EWT horn
15" woofer with 2,5" voice coil
frequency response 48~20kHz
Spl max123 dB
composite wooden cabinet
with carpet and metal grill
455x580x405 mm (WxHxD)

H300
available in 4 or 8 Ohm
300W AES power handling
23Kg

H300A
50+250W built-in bi-amplification
27,5 Kg

H350/H350A



1.5" supertweeter
8" midrange
15" woofer with 2,5" voice coil
frequency response 35~25kHz
Spl max122 dB
composite wooden cabinet
with carpet and metal grill
455x790x405 mm (WxHxD)

H350
available in 4 or 8 Ohm
350W AES power handling
29Kg

H350A
80+270W built-in bi-amplification
33,5 Kg

H500



1" high efficiency compression driver
on EWT horn
2 15" woofers with 2.5" voice coil
frequency response 40~20kHz
Spl max122 dB
composite wooden cabinet
with carpet and metal grill
4 Ohm impedance
500W AES power handling
485x1060x435 mm (WxHxD)
40 Kg

H350S/H350SA

15" woofer with 2.5" voice coil
frequency response 38~300Hz
Spl max 122 dB
composite wooden cabinet
with carpet and metal grill
475x555x520 mm (WxHxD)

H350S

4 Ohm impedance
350W AES power handling
29,5 Kg

H350SA

350W built-in amplifier
built-in electronic crossover
35,6 Kg

H400S/H400SA

18" woofer with 3" voice coil
frequency response 32~300Hz
Spl max 122 dB
composite wooden cabinet
with carpet and metal grill
625x540x545 mm (WxHxD)

H400S

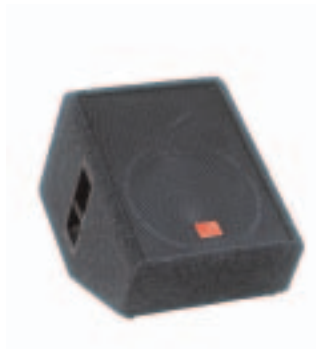
4 Ohm impedance
400W AES power handling
38 Kg

H400SA

400W built-in amplifier
built-in electronic crossover
43 Kg

H100MA

8" full range speaker
frequency response 65~20kHz
Spl max 114 dB
composite wooden cabinet
with carpet and metal grill
100W built-in amplifier
305x395x275 mm (WxHxD)
13 Kg

H200MA

1" compression driver on EWT horn
12" woofer with 2" voice coil
frequency response 55~20kHz
Spl max 120 dB
composite wooden cabinet
with carpet and metal grill
200W built-in amplifier
390x508x325 mm (WxHxD)
20,5 Kg

H300MA

1" compression driver on EWT horn
15" woofer with 2,5" voice coil
frequency response 48~20kHz
Spl max 123 dB
composite wooden cabinet
with carpet and metal grill
50W+250W built-in bi-amplification
455x580x405 mm (WxHxD)
27 Kg

spx series

The SPX series of loudspeakers are ideally suited designed for fixed installations or for portable use, where design style, maximum durability and studio-quality sound is required.

The speaker cabinets of SPX live and SPX media are made of polypropylene, reinforced with mineral fibers resulting in an attractive, sturdy design. The cabinet of the spx active sub is manufactured with quality MDF. All models are equipped with unique LEM mounting systems when matched with our accessory line, allow the speakers to be installed in various ways. SPX live and SPX media utilize high-quality custom LEM speakers offering a linear frequency response without distortion. The sub-woofer has been designed in order to give impressive performance and extended low frequency response.

spx live active



built-in 90W power amplifier
6,5" wide-range
frequency response 85~20kHz
Spl max 119 dB
polypropylene cabinet with
mineral fibres
194 x 300 x 220mm (L x H x D)
6,8kg

spx live
passive version
90W on 8 Ohm
4,6kg

spx media active



built-in 90W power amplifier
1" tweeter on ewt™ horn
6" woofer
frequency response 70~20kHz
Spl max 115 dB
polypropylene cabinet with
mineral fibres
194 x 300 x 220mm (L x H x D)
6,8kg

spx media
passive version
90W on 8 Ohm
4,6kg

spx sub active



built-in 350W power amplifier
12" woofer
frequency response 50~400Hz
Spl max 120 dB
stereo inputs and outputs
built-in electronic crossover with
variable frequency
MDF cabinet
486 x 340 x 350mm (L x H x D)
24kg

spx sub rear panel



serie titanium

Titanium from LEM offers a new contemporary plywood cabinet design featuring our acclaimed digital processor.

Titanium is one of the first systems of this type to combine a powerful digital processor with the most advanced design of speaker construction.

The active models feature an integrated, high quality power amplifier positioning Titanium at the top of its category for price and performance.

Built in digital processor features a 24bit low-noise converters and 40bit processing power allowing titanium to perform with the highest precision. The processor's 16 presets have been programmed by our experienced sound engineers to provide the system with different acoustic and dynamic responses suitable for a broad range of applications. All active versions feature

bi-amplification modules, able to drive each single speaker with high dynamic range and impressive power values. Engineered for touring systems, live performances and all permanent installations where optimum acoustic results and high performances in terms of reliability and efficiency are required.



T3A



1" compression driver
horn loaded (90x65°)
10" woofer
built-in bi-amplification 200+100W
frequency response 60~20kHz
Spl max 120 dB
internal digital processor
with 16 presets
4 M10 flying points
cabinet in plywood, scratch-resistant
paint, metal grill
357 x 490 x 355mm (L x H x D)
22kg

T200
passive version
200W on 8 Ohm
357 x 490 x 305mm (L x H x D)
14,5kg

T4A



1" compression driver
horn loaded (100x60°)
12" neodymium woofer
built-in bi-amplification 300+100W
frequency response 55~20kHz
Spl max 123 dB
internal digital processor
with 16 presets
4 M10 flying points
cabinet in plywood, scratch-resistant
paint, metal grill
400 x 608 x 390mm (L x H x D)
25kg

T300
passive version
300W on 8 or 4 Ohm
400 x 608 x 340mm (L x H x D)
17,5kg

T5A

1" compression driver
horn loaded (100x60°)
15" neodymium woofer
built-in bi-amplification
400+100W
frequency response 50~20kHz
Spl max 124 dB
internal digital processor
with 16 presets
cabinet in plywood, scratch-resistant
paint, metal grill
456 x 690 x 430mm (L x H x D)
32kg

T400

passive version
400W on 8 or 4 Ohm
456 x 690 x 380mm (L x H x D)
22,5kg

T6A

1" compression driver
horn loaded (90x65°)
8" midrange
15" neodymium woofer
built-in bi-amplification
400+200W
frequency response 45~20kHz
Spl max 126 dB
internal digital processor
with 16 presets
cabinet in plywood, scratch-resistant
paint, metal grill
456 x 804 x 430mm (L x H x D)
37kg

T500

passive version
500W on 8 or 4 Ohm
456 x 804 x 380mm (L x H x D)
28kg

T5SA

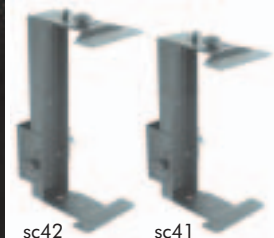
15" neodymium sub
built-in 500W power amplifier
frequency response 40~160Hz
Spl max 125 dB
internal digital processor
with presets
cabinet in plywood, scratch-resistant
paint, metal grill
466 x 600 x 600mm (L x H x D)
43,5kg

T4MA

12" coaxial woofer
1" compression driver
horn loaded
frequency response 55~20kHz
Spl max 122 dB
built-in bi-amplification
250+50W
internal digital processor
with presets
cabinet in plywood, scratch-resistant
paint, metal grill
506 x 326 x 422mm (L x H x D)
26kg

T5MA

15" coaxial woofer
1" compression driver
horn loaded
frequency response 50~20kHz
Spl max 124 dB
built-in bi-amplification
100+350W
internal digital processor
with presets
cabinet in plywood, scratch-resistant
paint, metal grill
586 x 356 x 495mm (L x H x D)
33,5kg

rear panel**mounting brackets**

**d400**

The acclaimed D400 is one of the first speakers in its category to combine a powerful digital processor, state-of-the-art loudspeaker design, power amplifiers and lightweight cabinets for a total compact solution. The integrated digital processor features a 24 bit, low-noise conversion system and with 40 bit processing power, to perform with the highest precision.

The D400's 16 presets have been programmed by our experienced sound engineers to provide different acoustic and dynamic responses suitable for a broad range of applications and music styles. The D400's cabinet shape allows it to be utilized as a high performance stage monitor if required. Although the D400 is featured to levels typically associated with high end products, LEM has succeeded in packaging it in a light weight and extremely affordable design resulting in the ideal solution for gigging bands, DJs, pubs, clubs, or permanent installation applications.

d400

2 way bi-amplified system
1" compression driver
with titanium diaphragm mounted
on a high-efficiency CD horn
12" high-excursion woofer with
2.5" voice and neodymium magnet
built-in power amplifiers 300+100W
frequency response 55~20kHz
Spl max 117 dB
built-in digital processor with HPF
and LPF crossover filters
25 bands parametric eq delay
and phase alignment
additional processing plug-ins:
multicomp, noise gate, anti-feedback
16 presets
digital protection system
high-density polypropylene
4 M10 flying points
400 x 620 x 375mm (L x H x D)
20kg

x300
passive version
300W on 4 or 8 Ohm
power handling
13kg

rear panel**mounting brackets**

up to 7 positions

cyclop EWT system **new**

Looking for an easy to transport, fast to set up PA system with the best sound for any application, then the Cyclop EWT system is right for you! A 3-way bi-amplified system comprising of two passive satellites and a subwoofer that integrates into its cabinet, the amplifiers and all the electronics required for fast set up times.

The new CYCLOP EWT provides a series of new features, greatly improving performance and audio results from its predecessor. Cyclop EWT is the ideal sound system for live musicians and mobile DJs as well as being suitable for installations in clubs, pubs and public venues where simplistic, yet high quality operation is preferred.

cyclop EWT system



cyclop EWT sat

two ways satellite
1" driver on EWT horn
8" woofer
4 M8 flying points
150 W power handling
4 Ohm impedance
274 x 440 x 245mm (W x H x D)
9,8 kg



cyclop EWT sub

300 W 15" woofer
with built-in amplifiers:
300 W for sub
2 x 150 W for satellites
MDF box black painted
550 x 480 x 550 mm ((W x H x D)
37,8 kg



cyclop stage pack

1 carry bag
2 aluminium stands
2 carry bags for the aluminium stands
2 speakon-speakon cables, 10m
2 jack-jack (bal.) cables, 10m



hercules system

Hercules is a three-way tri-amplified system based on one satellite and one subwoofer combination.

The amplification module in the subwoofer cabinet includes three independent power amplifiers (one for each loudspeaker Low/Mid/High) along with a 24dB/oct. crossover network that performs perfect frequency separation. The cabinets are constructed of quality MDF with scratch-resistant paint, providing maximum sturdiness and durability. Detailed attention to the cabinet design was undertaken in order to offer easy transportation and handling. Hercules is a professional integrated P.A. system which provides high efficiency and superior audio quality. It can be used not only as a portable live P.A. system for bands, but also as an ideal solution for permanent installations in all venues.

hercules sat



2 ways bi-amplified satellite
1" compression driver 50W
on EWT™ horn for the high section
12" woofer 150W
speakon connectors
to be used also as stage monitor
MDF cabinet, scratch-resistant paint
370 x 506 x 325mm (L x H x D)
16,4kg

hercules sub



high efficiency 15" woofer
in bass-reflex configuration
integrated power amplifier module
with:
1 power amplifier 300W for sub
2 power amplifiers 50W and 150W
for satellites
active crossover for the frequency
separation
active eq circuit for the system
compensation
three different anti-clipping circuits
for the loudspeaker protection
4 wheels
MDF cabinet, scratch-resistant paint
546 x 476 x 630mm (L x H x D)
39kg

hercules standard set-up



The standard setup consists of two satellites and two subwoofers.
Frequency response 38~22kHz
Spl max 122 dB

hercules double set-up



The double setup consists of two satellites and four subs.
The two additional satellites can be used as stage monitors.

hercules stage pack



1 carry bag
2 aluminium telescopic stands
2 connection cables
jack-jack (bal.), 15m

pegasus



Pegasus is part of LEM's line of feature-packed digitally integrated loudspeaker systems which have been engineered to meet the requirements of extremely demanding applications. Pegasus systems are equipped with a 400+400W Digitally Processed Power Module (DPPM), integrating the amplifiers with a sophisticated digital processor. This digital processor features 40 bit

internal processing and high resolution, low noise 24 bit converters for superb audio quality and excellent dynamic range.

The combination of the control section, the power amplifiers along with the speakers, has been engineered to provide extraordinary results in terms of quality, efficiency and reliability. Pegasus is ideal for all demanding applications in live music, clubs, theatres, concert halls, ballrooms, etc. Pegasus will impress even the most critical of audiences!

pegasus



pegasus sat 212



2" horn loaded driver
12" woofer in bass reflex
2 built-in 400W power amplifiers
VDAT system
Frequency response 48~18kHz
Spl max 124 dB
40bit built-in digital processor
editable via PC (dx editor)
with RS232 connection
4 plug-ins: noise gate, hum cancel,
multi-band compressor, anti-feedback
4 M10 flying points
plywood cabinet with protection foam
and metal grid
424 x 638 x 440mm (L x H x D)
44kg

pegasus sub 118



18" woofer in bass reflex
built-in 800W power amplifier
VDAT system
Frequency response 32~300Hz
Spl max 124 dB
40bit built-in digital processor
editable via PC (dx editor)
with RS232 connection
4 plug-ins: noise gate, hum cancel,
multi-band compressor, anti-feedback
plywood cabinet with protection foam
and metal grid
4 wheels
620 x 620 x 566mm (L x H x D)
60kg

dppm module



Together with the power amplifiers, the DPPM module includes the digital processor with a series of FACTORY PRESETS suitable for the use of the system in different configurations, which can be recalled directly from the control panel. A complete serial interface (RS232 + RS485) allows the remote control of all the input parameters (EQ, MASTER DELAY, LEVEL) and the PLUGINS from a PC using the DX EDITOR software (see page 36). Personal setups can be saved in a series of USER PRESETS.

poseidon



Poseidon, LEM's top of the line high-quality amplified loudspeaker systems is designed for large indoor or outdoor applications.

Using the same Pegasus' technology, our engineers have further enhanced Poseidon's efficiency by adding a series of particular enhancements: horn loaded drivers and woofers, push-pull systems and band-pass cabinets insure the maximum acoustic diffusion with extraordinary SPL results.

Poseidon provides a surprisingly low cost, yet extremely reliable solution for sound reinforcement in large venues such as stadiums, arenas, concert halls, etc.

poseidon



poseidon sat 212



2" horn loaded driver
12" horn loaded woofer
2 built-in 400W power amplifiers
VDAT system
Frequency response 130~18kHz
Spl max 134 dB
40bit built-in digital processor
editable via PC (dx editor)
with RS232 connection
4 plug-ins: noise gate, hum cancel,
multi-band compressor, anti-feedback
plywood cabinet with protection foam
and metal grid
604 x 973 x 723mm (L x H x D)
67kg

poseidon sat 212 fly

8 flying bars
4 different positions for flying

poseidon sub 218

2 18" woofers in push-pull in a band-pass cabinet
2 built-in 400W power amplifiers VDAT system
frequency response 35~110Hz - Spl max 129 dB
40bit built-in digital processor editable via PC (dx editor) with RS232
connection, 4 plugins: noise gate, hum cancel, multi-band compressor,
anti-feedback plywood cabinet with 4 wheels,
1460 x 540 x 735mm (L x H x D), 127kg



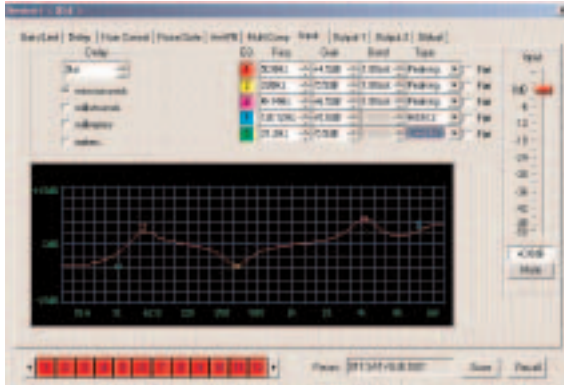
dppm module



Together with the power amplifiers, the DPPM module includes the digital processor with a series of FACTORY PRESETS suitable for the use of the system in different configurations, which can be recalled directly from the control panel. A complete serial interface (RS232 + RS485) allows the remote control of all the input parameters (EQ, MASTER DELAY, LEVEL) and the PLUGINS from a PC using the DX EDITOR software (see page 36). Personal setups can be saved in a series of USER PRESETS.

dx editor

The DX editor software has been designed by LEM to control from a PC Poseidon, Pegasus and dx series. It provides seamless visual access to all the processor's many parameters, allowing sound engineers to edit the DSP in real time. You can download a free copy of the dx editor software by visiting www.lemaudio.com



rs kit



- serial system connection for processor software control
- 2 RSC serial converters with external PSU
- two RS232 serial cables 9-pin (1,5 m)
- one RS485 serial cable with 5-pin XLR on both ends (30m)



dx series

DX 24 and DX 26 plus are digital loudspeaker processors powered by a proprietary LEM DSP. This powerful 40bit DSP, together with 24bit converters, ensures superb audio quality and dynamics.

Both models include factory presets with general purpose configurations which may be used in various different kinds of applications.

User presets for the storage of personal setups are also available. Both DX models are equipped with a remote control interface to utilise the powerful DX Editor control software (see p. 31). You can download a free copy of the dx editor software by visiting www.lemaudio.com

dx 24



- digital speaker processor
- 40bit internal processing
- 24bit A/D and D/A converters
- 2 way stereo (2 in/4 out)
- up to 48dB/oct. digital crossover
- and output delay, phase alignment, limiter
- 17 factory presets + 64 user presets
- 2 x 16 LCD
- MIDI interface
- DX Editor software PC control
- 1 rack unit, 4kg

dx 26 plus



- digital speaker processor
- 40bit internal processing
- 24bit A/D and D/A converters
- 3 way stereo (2 in/6 out)
- up to 48dB/oct. digital crossover
- and output delay, phase alignment, limiter
- 21 factory presets + 128 user presets
- memory card slot
- AES/EBU digital input
- 2 x 16 LCD
- RS485 and RS232 serial interface
- DX Editor software PC control
- 1 rack unit, 4kg

fx series

LEM digital multi-effects "FX" offer musicians, technicians and recording studios state-of-the-art algorithm effects with the purity of 40bit digital sound quality. Surprising versatility and easy to operate, the Fx effects reach a level of quality and characteristics usually found on much higher priced products. Featuring an extremely uncomplicated user interface, Fx12 offers quality effects for a wide range of signals (16 PRESET banks each with 16 VARIATIONS provide an impressive total of 256 different effects.). FX 22 and FX 24, with 40bit processing power provide some of the best reverb, delay and modulation effects currently available. These include extremely realistic Hall and Plate reverbs, bounce and tape-back vintage effects, rich Chorus as well as Flanger, Phaser and Rotary Simulator in pure analogue style.

fx 12 new

digital effect with 24bit processing
 24bit ADC and DAC converters
 16 preset + 16 variations for a total of 256 different effect carry bag
 3 jack-jack cables included
 rack adapters
 1/2 rack unit, 0,6kg

fx 22

digital double effect processor
 40bit internal processing
 two independent stereo effects
 dual or combi mode
 121+121 presets
 1/2 rack unit 1,2kg

fx 24

digital double effect processor
 40bit internal processing
 two independent stereo effects
 up to 3 effects for each preset
 up to 3 editable parameters
 128 factory presets + 128 user presets
 3 digit LCD
 MIDI interface
 1 rack unit 4kg

crossover XO

The XO 203-2 is a stereo three-way crossover. In a 1-rack unit chassis, the XO electronic crossover can apply high-precision, 24dB/oct. Linkwitz/Riley filters.

The controls include a constant directivity horn compensation and the connection panel is fitted with balanced xlr and trs jack connectors.

xo 203²

three ways active crossover
 2 in/6 out
 24dB/oct.
 Linkwitz/Riley a 24dB/oct. crossover filters
 CD boost
 1 rack unit
 2,5kg

L2000/L3000

The L series microphones are available in both VHF (L2000) and in UHF (L3000) frequency range, including an impressive feature set and multiple versions suited for many different applications.

- The available versions are:
- Handheld microphone (HT version)
- Headset and body pack transmitter (ST version)
- Lavalier microphone and body pack transmitter (LT version)
- COMBI - includes all three versions.

L2000 sd

VHF switching diversity
two antennas VHF receiver
volume and squelch controls
RF LED and signal LED
xlr and jack connectors
external PSU
1/2 rack unit
1,3kg

L3000 sd

UHF switching diversity
two antennas UHF receiver
volume and squelch controls
RF LED and signal LED
xlr and jack connectors
external PSU
1/2 rack unit
1,3kg

HT version with hand-held mic

wireless hand-held mic
dynamic capsule
cardioid polar pattern

LT version bodypack with lavalier mic

body-pack transmitter
lavalier condenser mic
omni-directional polar pattern

ST version bodypack with mic headset

bodypack transmitter
headset dynamic mic
cardioid polar pattern

GT version bodypack with connection cable

body-pack transmitter
connection cable
for musical instruments

L200/L300

L200 (VHF) and L300 (UHF) are compact wireless microphone systems combining high-level performance with a very affordable price. They are available in different versions suitable for many different uses.

With handheld microphone (HT version)

With headset and bodypack transmitter (ST version)

With lavalier microphone and bodypack transmitter (LT version)

COMBI includes all three versions.

L 200 new

VHF switching diversity receiver
2 antenna receiver
LED RF and SIGNAL LED
Jack connector
external PSU
carry case

available only in COMBI version

L 300

UHF receiver
1 antenna receiver
LED RF and SIGNAL LED
Xlr and Jack connector
external PSU
1/3 rack unit
carry case

HT version with hand-held mic

wireless hand-held mic
dynamic capsule
cardioid polar pattern

LT version bodypack with lavalier mic

body-pack transmitter
lavalier condenser mic
omni-directional polar pattern

ST version bodypack with mic headset

bodypack transmitter
headset dynamic mic
cardioid polar pattern

COMBI version

carry bag with
L300 or L200 receiver
bodypack transmitter
wireless hand-held mic
lavalier condenser mic
headset dynamic mic

code	description
951354	Stage Pack Cyclop
951365	Stage Pack Hercules
951283	LM 20 dynamic microphone
950860	SC 20 metal telescopic stand
950199	SC 30 aluminium telescopic stand
950978	SC 31 aluminium telescopic stand
951451	SC 41 mounting bracket for D400/X300/T4A/T300
951452	SC 42 mounting bracket for T3A/T200
950444	SC 61 stand adaptor (SP and SPX series)
950445	SC 62 mounting clamp (SP and SPX series)
950446	SC 63 table fixing clamp (SP and SPX series)
951125	SC 64 "T" stand (SP and SPX series)
951137	SC 65 flange for speaker stand (SP and SPX series)
951136	Power connection cable (Pegasus & Poseidon)
951133	Power cable SPK2 speakon cable 2 x 1,5 - 15m
951151	Signal cable JJS jack-jack cable 15m
970294	Rack Adaptor FX22 for FX 22, Wireless series, PM series

notes

