

# php Kitchen Planner manual

## CHAPTERS

1. ABOUT PHP KITCHEN PLANNER SCRIPT.....	3
2. QUICK GUIDE USING PHP KITCHEN PLANNER.....	6
3. INSTALLATION.....	12
GoDaddy Installation.....	13
CPanel Installation.....	19
5. ADMIN (CMS).....	23
6. UPLOAD ITEMS.....	30
7. IN-HOUSE RENDERING AND UPLOADING SERVICES.....	31

## ABOUT PHP KITCHEN PLANNER SCRIPT

php Kitchen Planner is a powerful online 3d interior planner developed for online users that would consider more comfortable to use such a software in order to create her/his favorite kitchen room from home. One of the best ways to get closer to your clients is to give them the opportunity to explore your products from a computer or portable device. The script has a friendly User Interface, easy to use, fast and reliable and it can always be customizable for other rooms (bathroom, living room etc.).

You can also say that php Kitchen Planner is powerful online interior design software for design pros, manufacturers, retailers and web developers. It helps you build from scratch your kitchen dream. Despite his name, php Kitchen Planner, it can be adjusted also for other rooms. Simple, robust, no particular hardware requirements and no required extra programs installed. The server requirements are minimum, no media stream or other streaming related software.

This product comes in 3 different editions and each one presents particular services included.

We have Developer, Business and Deluxe Edition.

Developer Edition like its name is designated for web developers, they are able to install, create templates, rendering/uploading items and more.

Business Edition (services included) is the entrepreneur's online start-up edition for his business. With this edition you can have a quick start and experience the online interior design software marketing strategy for your business.

Deluxe Edition also we like to call it corporate edition. Anything you may want extra we are flexible for customization at request. More information about what each edition has to offer: <http://www.3dkitchenplanners.com/purchase/>

php Kitchen Planner script has what you need to start a business online and not only. We provide a complete set of services that will launch you directly into online interior selling. More information about this new script on our official web site: <http://www.3dkitchenplanners.com/>

Where kitchen industry is in a continuous growing across the world especially in Asia, Digital Artflow created php Kitchen Planner (<http://www.3dkitchenplanners.com>) the right tool for web developers, design pros, manufactures and retailers. Along with our products also we provide various services like: customization and 3d renderings.

The software is using technology that relies on isometric 3d projections generated by flash/actionscript combined with php/javascript language. The idea with php Kitchen Planner is that it's more available than any other script of this kind to any developer or entrepreneur who seeks cheaper and pre-developed interior planner software for his business strategy. You can find more information about each product and its services here: <http://www.3dkitchenplanners.com/purchase/>

Php Kitchen Planner has many features (<http://www.3dkitchenplanners.com/features/>) and if you're looking to keep up with technology you might need this kind of software implemented into your business and start exposing your items in 3D directly on the internet. Php Kitchen Planner is the most easy and affordable way to have an interior planner ready to showroom and sell your cabinets/appliances online.

So we believe that this is the first compact interior planner script with back-end administration, able to buy it online and install in 5 minutes if you're familiar with FTP, SQL (<http://www.3dkitchenplanners.com/installation/>). So finally we can have an already made interior planner script that can be easily customized.

So this is a good way to start immediate your online interior planner and not spending too much on your start. The best thing about php Kitchen Planner is that they have various services to support you in customizing and updating your planner periodically. The most easy and affordable way to have an interior planner ready to showroom and sell your cabinets/appliances online.

**I observed on most freelancer websites that many contractors are posting projects for various cabinets selling website projects where they want an online interior planner introduced in order for regular visitors to plan their rooms with available catalogues embedded in the planner script.**

Usually is not a cheap task and that's why php Kitchen Planner is here for a more cheap, fast implementing and no high demand resources to implement online interior design software into your business.

So if you're looking to keep up with technology you might need this kind of software implemented into your business and start exposing your items in 3D directly on the internet. So crunch it now and buy this software with its unique set of services that will boost you online like never before. More info related to this software here: <http://www.3dkitchenplanners.com/overview/>

**Main Advantages that would take you to another level in kitchen business and not only for kitchens:**

Low Cost Developing

Buying our product saves you time and money spent on programmers and you can always customize it!

Get Full Technical Support for Your Own Interior Design Software

php Kitchen Planner has all you need to start a business online and not only. We provide full technical support for script maintenance and customization.

100 % Customizable

Everything is customizable. The source code is open for custom and it can easily be adapted to your needs. We can adapt the planner script for bathroom planner, living-room, etc.

Requirements

The server requirements are minimum ,no media stream or other streaming related software.

Server Requirements:

- Web Server
- Linux
- PHP 4.x & above
- MySQL
- GD complied
- ImageMagick

Our theme we release has been tested to work on the latest versions of all the most common web browsers (eg. Firefox, IE8, Opera, Chrome etc...). For those that use Internet Explorer must have version 7 or higher installed in order to properly use all the features provided.

## Hosting

Ask your host. The best way to check your requirements is to simply contact your host and ask them. Simply link them back to this page so they can look over the list.

## Main Features:

# php Kitchen Planner

- Fast Isometric PNG 3D Rendering on 4 Angles
- Order High Detail Photorealistic Rendering
- Admin Control Panel (CMS)
- Free Form Room Tool (90 degree restrictions wall drawing)
- 4 Room Templates (Room Dimension Edit)
- Snap
- Add Inner Walls/Windows/Doors Tool (Custom Design and Predefined Design)
- Add Units/Worktops/Textures/Handles/Appliances Tool (Description, Rotate, Delete)
- Add Custom and Predefined Units and Appliances
- Location and Postal Code
- Advanced Filters Option
- Shopping Cart\*
- User Registration, Profile, Save rooms.
- User Guide Module
- Search kitchen elements, undo/redo, pan view, zoom, delete, clear, show floating/wall units by layer
- Wizard Style Template with 3 main steps.

\*E-Payment Installation more information [contact us](#).

**php Kitchen Planner Script** has what you need to start a business online. We assure full support for script maintenance, database and customization. **Perfect for your online marketing strategy.** See [DEMO](#)

We also provide 3d rendering services, maintenance, customization, and many more for a complete and functional planner script. Also if you want to find out the latest on php Kitchen

Planner we invite you to visit: <http://www.3dkitchenplanners.com> and/or write us an email: [contact@digitalartflow.com](mailto:contact@digitalartflow.com)

For more information regarding integrating software into your business web site please [contact us!](#)

or at : [contact@digitalartflow.com](mailto:contact@digitalartflow.com)

## QUICK GUIDE USING PHP KITCHEN PLANNER

### 1. What Would You Like To Do?!

php Kitchen Planner has 3 main steps, page by page you will get through all the necessary steps in order to create your favorite design room in just a few minutes. The first button you will see in our standard edition would be "Start to plan your kitchen" if you want to proceed forward with planning, or "Take a tutorial or get help" button that will direct you to tutorials and help materials. Once you are in User Guide area you can always get "Back" and start to plan your room after you learned more about using the software. You have access to User Guide on every step of your design and you will be able to consult help pages whenever you need.



The next step will ask to specify State and Postal Code:

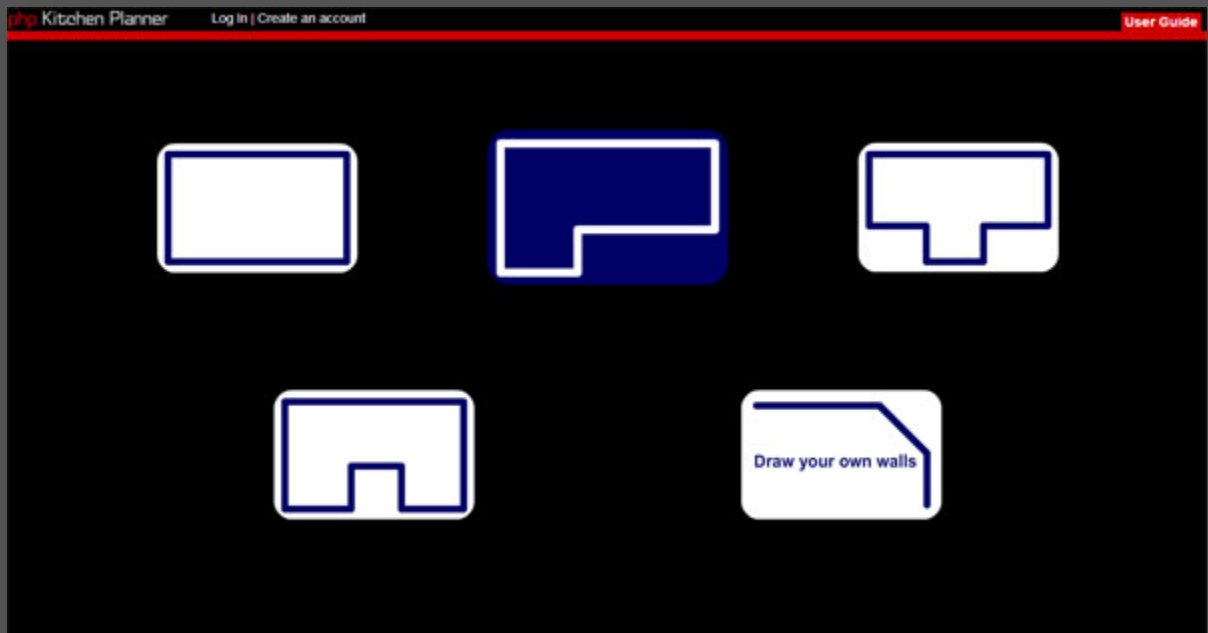
The screenshot shows a web browser window with the title 'php Kitchen Planner'. The top navigation bar includes 'Log In | Create an account' and a 'User Guide' link. The main content area displays a form titled 'Please Specify Country and Postal Code'. The form has two input fields: 'State:' with a dropdown menu showing 'Country or Region', and 'Postal Code:' with the value '5608'. A red 'Continue' button is located at the bottom right of the form.

Before we get to Step 1 (Room Templates and Free Form Room Creator) you need to select your manufacture, or you can switch between bathroom, kitchen, living etc.

The screenshot shows a web browser window with the title 'php Kitchen Planner'. The top navigation bar includes 'Log In | Create an account' and a 'User Guide' link. The main content area displays a form titled 'Please Select Manufacture'. The form has a single input field with a dropdown menu showing 'StoneAge'.

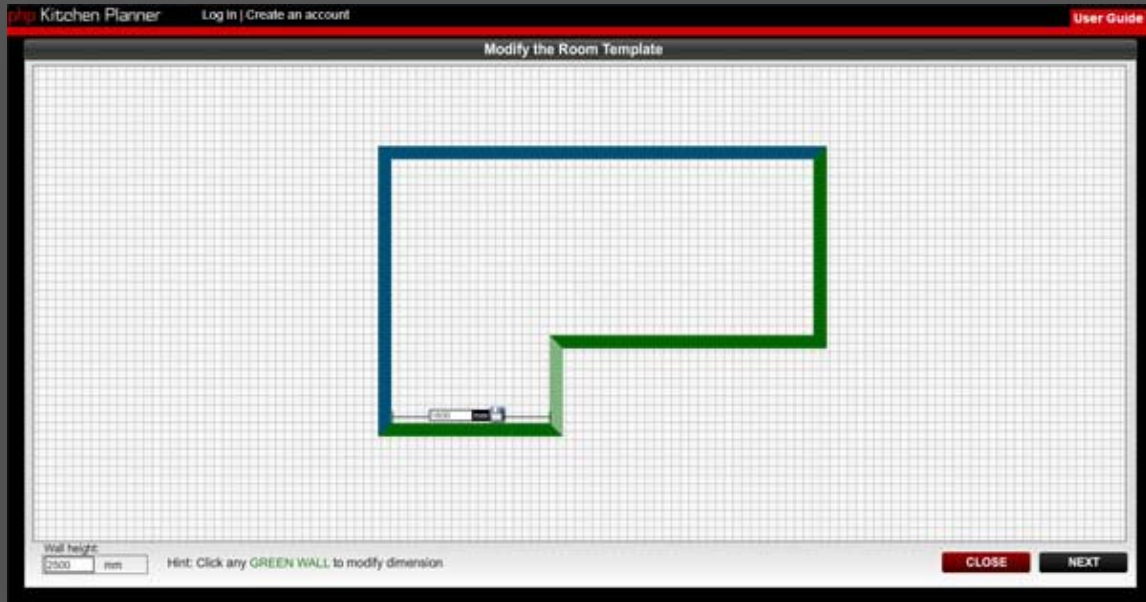
## 2. Step 1. Start Planning Page.

Here you have 4 room templates: square, L, T and U type rooms. You can define that particular room template you choose. You can edit wall height at the bottom left dimension box. You can click any GREEN WALL on your prebuilt room template and modify dimensions. After you defined that particular room template you can click the right bottom "Next" button to go forward or "Close" button to go back to choose another room template.

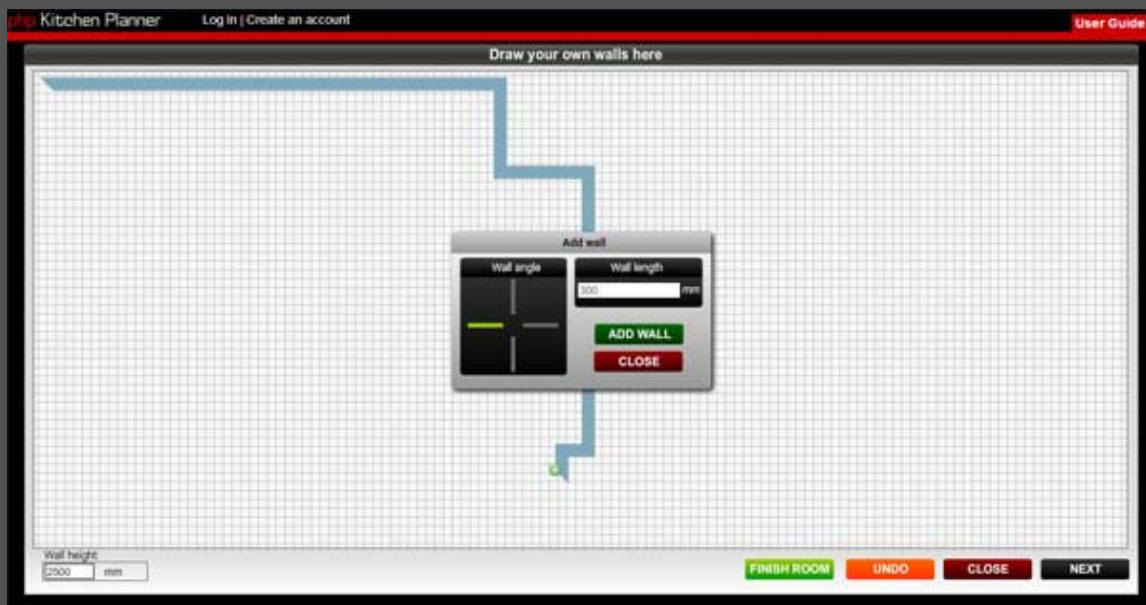


Besides room templates also you can choose the last room option "Draw Your Own Walls" that will direct you to create from scratch your own room.





In top left screen you have a PLUS icon button that will help you start your first wall from scratch, when you click "plus" icon you will get an "Add Wall" window tool with all the necessary options like: Wall angle, Wall length and two request buttons "Add Wall" and "Close". With the help of "Add Wall" window you will be able to draw your room walls from scratch. Also you can always use "Finish Room" function which is an automated wall creator that finishes himself the room in respect to your already made wall plans.



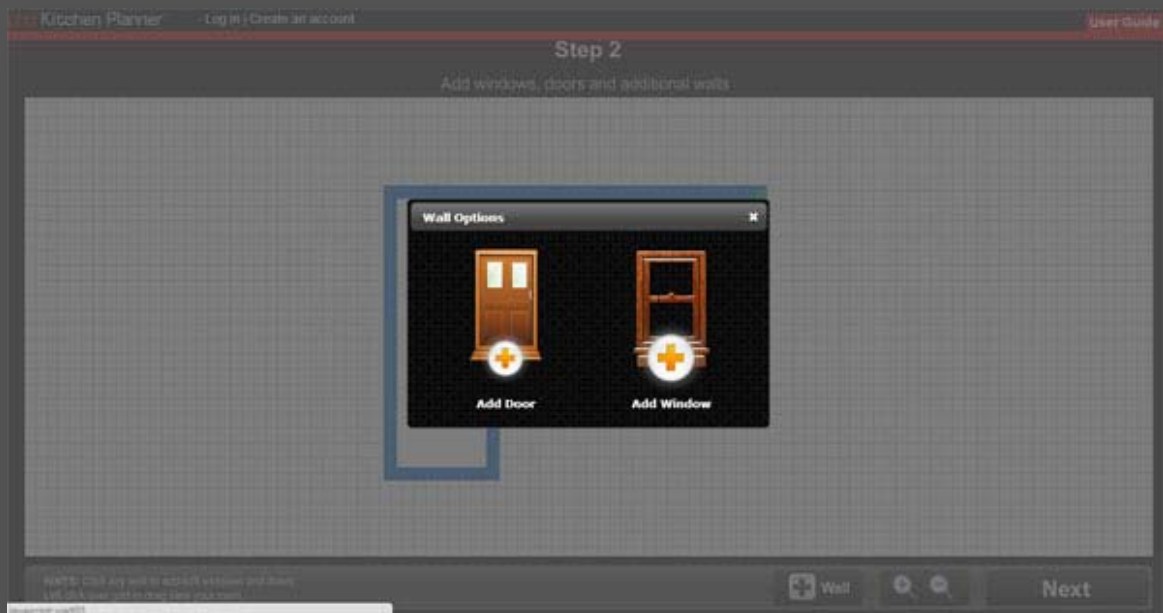
“Undo” erases the last change done to your room walls reverting it to an older state. You can right click screen (outside room) and drag-view to fit your room on screen for a better view. If you click “Next” at right bottom screen you go forward in building your interior.

### 3. Step 2. Room Design.

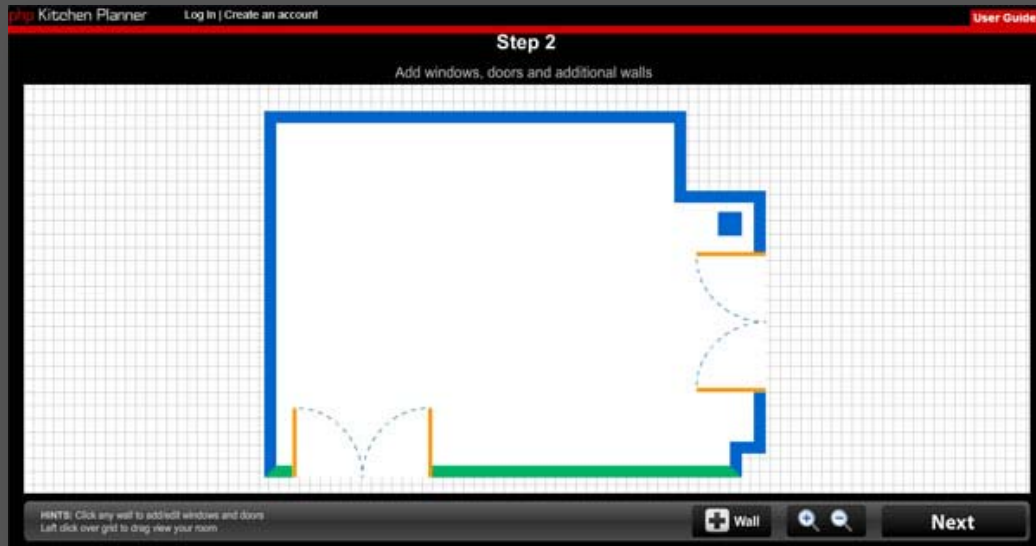
The first thing you observe once you will get to Step 2 is the pop-out HINT window which lets you know to click on ANY blue wall in order to add WINDOWS and DOORS.

You can right click screen (outside room) and drag-view to fit your room on screen. Also if anything is unclear you can always access User Guide on right top screen.

On Step 2 you can start by click one of your desired walls in order to insert your favorite door or window, sequent you can click other walls to insert more windows or/and doors. When you click one wall, “Wall Options” tool will appear in front of you. You will be able to select and add doors or/and windows; on both choices you will be able to create your own customizable door/window or predefined door/window variations.

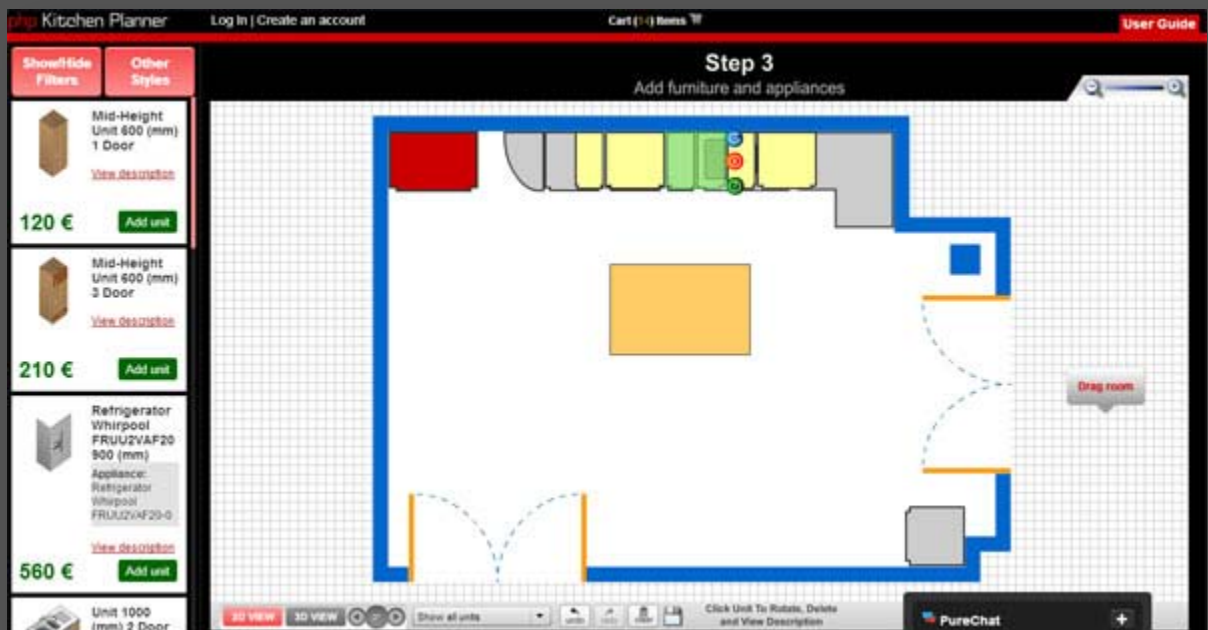


If you want to add inner walls and square columns click on the right bottom screen button named “Wall”. If you want to go forward click “Next” button at right screen.



#### 4. Step 3. Add Furniture and Appliances.

The first window, ones you reach Step 3, is the “Choose an option” pop-out window from where you can select your desired custom style or the available predefined styles. You can return to “Choose an option” window by clicking the top left button “Other Styles” to switch to other styles.



The last stage contains all the necessary tools to finish, save and even send orders with your room items online.

From top left screen you will find "Other Styles", this button will switch you between your preferred furnitures/cabinets or/and appliances from the "Custom Style" or trying already the "Predefined Styles".

Filters (order by), search and rollout through all type of units from the second top left button "Show/Hide Filters". You can easily add units, check description, prices, delete, translate and rotate them.



In low center page "Show All Units" from the planner's viewport allows you to filter wall units and ground units for a more friendly 2D visualization. On low left screen you can switch from 2D view to 3D Isometric view, here you can rotate in 4 angles, zoom in and zoom out. You can "Login" to your account to load saved kitchens (from any stage) or "Create an account" to save and send orders.

## INSTALLATION

The installation process is usually split in 4 main steps and would take a few minutes if you're familiar with some things regarding FTP, MySQL and Hosting services. Before we

explain how can install php Kitchen Planner let me remind you that you can always contact us on <http://www.3dkitchenplanners.com/contact/> to provide you with professional installation. The installation instructions are written here for GoDaddy and CPanel.

## I. GoDaddy

1. DOWNLOAD & EXTRACT ZIP FILE
2. CREATE MySQL DATABASE/IMPORT .sql

If you're using a hosting provider clearly it will need to create a MySQL database in concordance with what panel you are using, for example **CPanel**, **Plesk** or **GoDaddy Hosting Control Center**. If you already have a database built, you can easily use that database instead.

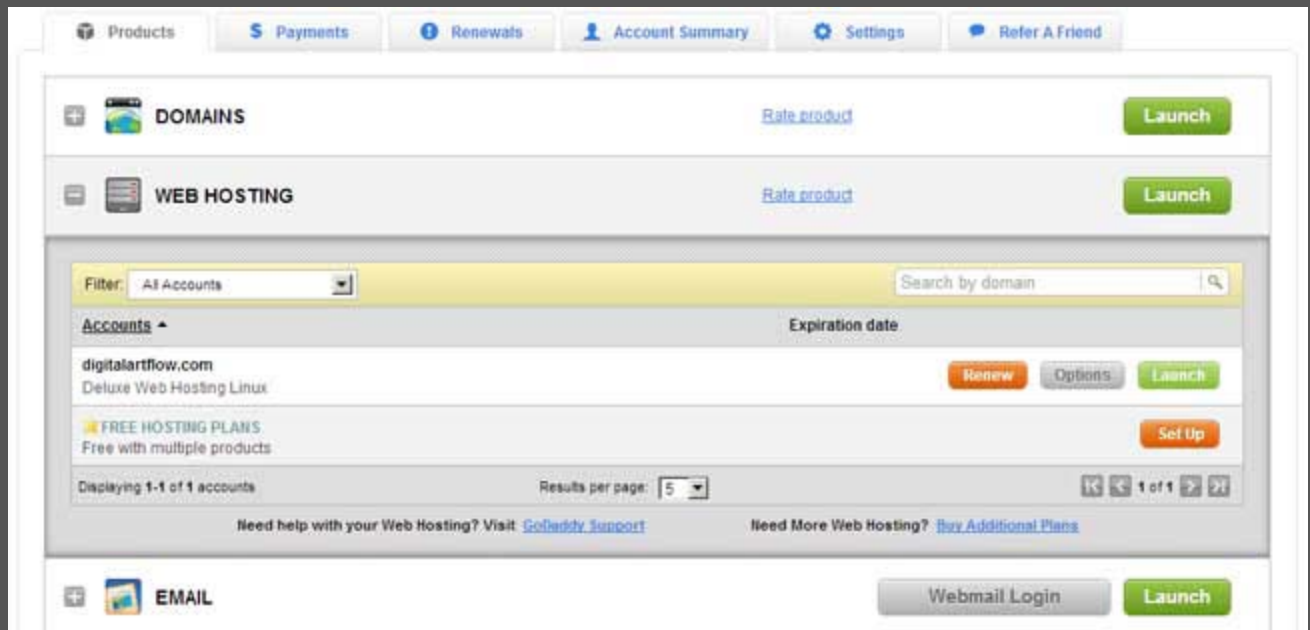
Below you can see how easy you can create a MySQL Database in GoDaddy Hosting Control Center and Login into it.

Login into your **GoDaddy** account.

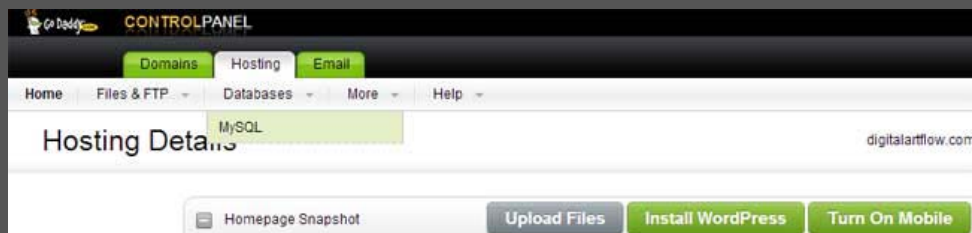
A screenshot of the GoDaddy 'Log In' page. The page has a white background with a light blue header. The title 'Log In' is in a large, bold, orange font. Below the title, there are two radio buttons. The first is selected and is labeled 'Yes, I have a Go Daddy account.' Below this, there are two input fields: 'Enter your username/customer #' and 'Enter your password'. To the right of the password field is a link that says 'Forgot Password?'. The second radio button is labeled 'I'm a new customer.' At the bottom of the form is a green button with the text 'Log In' in white.

After you logged in into your GoDaddy account, select **My Account** and look for **Web Hosting** and from there you can **Launch** your **Hosting Control Center**.

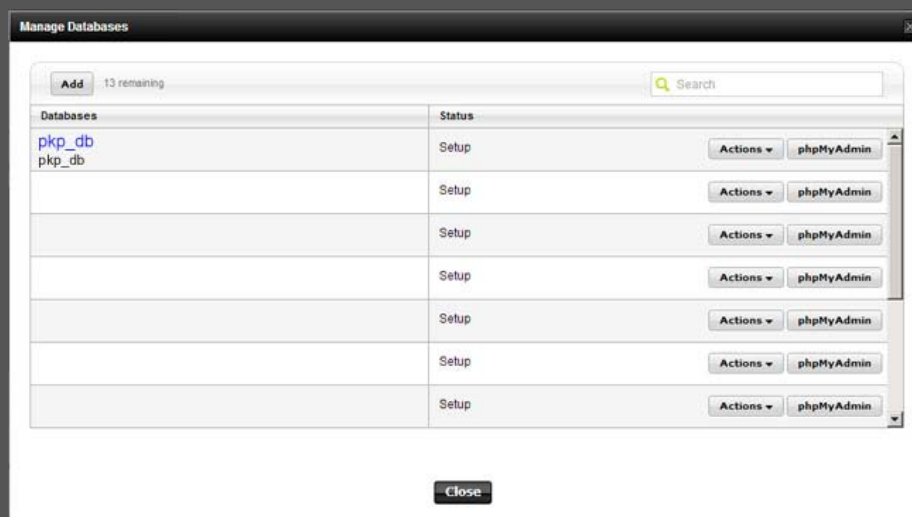




Now you should see GoDaddy's Hosting **Control Center** interface and from there select **Databases**, and **MySQL**.



You should see something like this:



If you observe the image above, you have 3 critical buttons that helps you create and edit your database. First button is **Add** that helps you create one database from scratch

(recommended). The second button is **phpMyAdmin** which will help you manage your SQL tables. And the third button is **Actions** and will show you all the information needed for your script.

Let's assume you created one database from scratch and then you clicked **Actions>>Details**, then will show you something like this:

**Database Details**  
Manage your database details. ?

**Back Up** **Restore** **Delete** **Code Sample** ▾

**Database name and username:** ?  
pkp\_db

**Password:** <hidden> **Reset**

**Friendly Name:** pkp\_db **Edit**

**Admin URL (phpMyAdmin):** ?  
https://n1n1mysqladm01.secureserver.net/ **Visit**

**MySQL version:**  
5.0 (Direct access not allowed)


**Status:**  
Setup

**Last Activity:**  
Restore on 21.8.2013 at 10:51:08

**Close**

The above **MySQL Database Details** will help you now to write it on your config.php files found in your php Kitchen Planner root script folder and Admin.

Before we leave GoDaddy Hosting Control Database, after we created the database and noted the necessary database information we need, we click to **Visit** via **phpMyAdmin** explained on previous image and access database tables. Click **Visit** via **phpMyAdmin** and a similar page like the image below should show up.



## Welcome to phpMyAdmin

**Language**

English (utf-8)

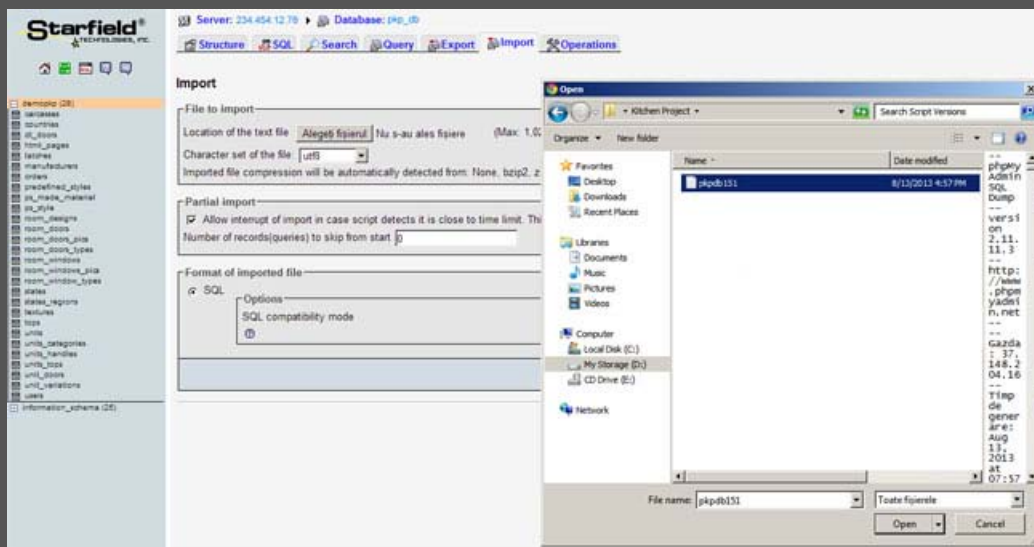
**Log in**

**Username:**

**Password:**

**Forgot Password?**  
 You may reset your database password in the Hosting Control Center.

You log-in with your username and password. Go to **Table** root and then click **Import** and import **.sql file tables** found in your php Kitchen Planner edition package. After you browsed and selected the requested .sql file you can click **GO** button on right down screen and import the file into your created database.



And that's about it, you've created the database needed for your online interior planner. These directions are for Go Daddy but are no vast differences between other hosting providers, usually hosting websites are giving precise directions on how you can create databases, or you can search over internet for tutorials like **"how do I create database in Godaddy, CPanel or Plesk"** depending on what provider you are using.

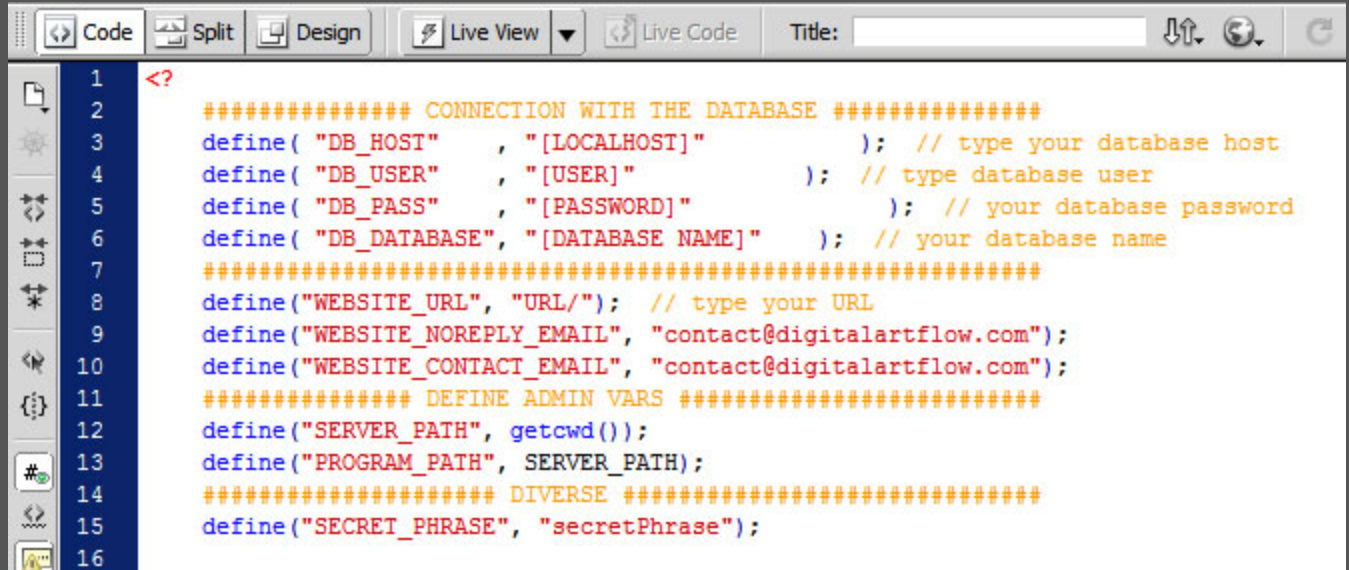


### 3. CONFIG.PHP

Go to php Kitchen Planner root folder where you unzipped the files. Here you will have to find both config files and connect them to your database.

Name	Date modified	Type	Size
admin	7/7/2012 7:18 PM	File folder	
ajax	7/6/2012 6:05 PM	File folder	
Classes	7/6/2012 6:05 PM	File folder	
css	7/6/2012 6:05 PM	File folder	
door_types	7/6/2012 6:05 PM	File folder	
flash	7/6/2012 6:05 PM	File folder	
html_pages	7/7/2012 6:58 PM	File folder	
images	7/6/2012 6:05 PM	File folder	
js	7/6/2012 6:06 PM	File folder	
libs	7/6/2012 6:06 PM	File folder	
pages	7/6/2012 6:06 PM	File folder	
templates	7/6/2012 6:06 PM	File folder	
templates_c	7/6/2012 6:14 PM	File folder	
uploads	7/6/2012 6:09 PM	File folder	
.htaccess	7/6/2012 6:04 PM	HTACCESS File	1 KB
body	7/6/2012 6:04 PM	PHP Script	2 KB
codsecuritate	7/6/2012 6:04 PM	PHP Script	4 KB
config	7/7/2012 7:18 PM	PHP Script	2 KB
getPage	7/6/2012 6:04 PM	PHP Script	2 KB
getUnitPic	7/6/2012 6:04 PM	PHP Script	3 KB
includes	7/6/2012 6:04 PM	PHP Script	1 KB
index	7/6/2012 6:04 PM	PHP Script	2 KB
logo	7/6/2012 6:04 PM	Icon	6 KB

Each **config.php** represents a script module: **Main** and **Admin**. The first **config.php**, can be found in your script root. Is the main configuration file and here you will be able to type your database information created a little bit earlier. Open it with an editor (Notepad, WordPad, Dreamweaver, NetBeans etc.). Let's say you've opened with Dreamweaver, you will find something like in the below image.



```

1  <?
2  ##### CONNECTION WITH THE DATABASE #####
3  define( "DB_HOST"      , "[LOCALHOST]"          ); // type your database host
4  define( "DB_USER"      , "[USER]"               ); // type database user
5  define( "DB_PASS"      , "[PASSWORD]"           ); // your database password
6  define( "DB_DATABASE" , "[DATABASE NAME]"        ); // your database name
7  #####
8  define("WEBSITE_URL" , "URL/"); // type your URL
9  define("WEBSITE_NOREPLY_EMAIL", "contact@digitalartflow.com");
10 define("WEBSITE_CONTACT_EMAIL", "contact@digitalartflow.com");
11 ##### DEFINE ADMIN VARS #####
12 define("SERVER_PATH", getcwd());
13 define("PROGRAM_PATH", SERVER_PATH);
14 ##### DIVERSE #####
15 define("SECRET_PHRASE", "secretPhrase");
16

```

Your interest lies only on **CONNECTION WITH THE DATABASE** section where you will have to complete 7 rows like: **Database Host**, **Database User**, **Database Password** and **Database Name**, **Website\_URL**, here case sensitive, depending where have you uploaded the script and what domain and hosting account you are using (**Example: <http://yourdomain.com/> or <http://yourdomain.com/kitchenplanner/>**). And the last 2 rows you have to type is your **E\_MAIL** (it will help in receiving interior design orders).

Then you have to add the same database information for the other **config.php** file found in Admin folder. You will complete this in the same manner like explained above for the first configuration only that you will not have to type **WEBSITE\_URL**. On **Admin** may need to specify the **mysql\_select\_db** which usually is the name of your database and complete bottom **config.php** page with specific paths:



```

21 ##### SETARI #####
22 $server = array(
23     /**server_path' => dirname(__FILE__).'/', */
24     'server_path' => '/home/content/87/6010387/html/[YOUR_FOLDER]/' // type server path example: /home/content/87/6010387/html/demo/
25 );
26 $config = array(
27     'siteurl' => '[URL]/[YOUR_FOLDER]/', // type url
28     'site_url' => '[URL]/[YOUR_FOLDER]/', // type URL with www
29     'site_name' => '[NAME]/', // type your site name
30     'secret_phrase' => 'WINTEROUD',
31     'server_path' => '/home/content/87/6010387/html/[YOUR_FOLDER]/', // type server path, example: /home/content/87/6010387/html/demo/
32     'adminurl' => '[URL]/[YOUR_FOLDER]/admin/', // type your admin url path, example: http://digitalartflow.com/demo/admin/
33     'admin_url' => '[URL]/[YOUR_FOLDER]/admin/', // type your admin url path with www
34     'static_admin' => array(
35         'css' => '[URL]/[YOUR_FOLDER]/admin/static/css/', // URL
36         'js' => '[URL]/[YOUR_FOLDER]/admin/static/js/', // URL
37         'img' => '[URL]/[YOUR_FOLDER]/admin/static/img/' // URL
38     ),
39 );
40 ?>

```

#### 4. UPLOAD SCRIPT

After you completed all **config.php** files with the necessary database information and paths, you can now upload your script into your desired FTP address, for more information regarding this part if you're not familiar on how to assign your specific domain name and ftp

folder address and where to upload your script or any other information related to installation please contact your hosting service provider.

Make both **config.php** & **admin/pages/login.php** 444 permission, as default this file has **username:** admin and **password:** 123qwe.

5. Type on your internet browser the URL address to experience for the first time the php Kitchen Planner interface

(Example: <http://www.yourdomain.com> or <http://www.yourdomain.com/kitchenplanner>)

## II. CPanel

Installation through CPanel is not too different from GoDaddy's Hosting Plan, the only things that are different between the two are the control panel user interface (which are totally different) but the actual installation process is the same and database host name, many of you know is : **"localhost"** as default.

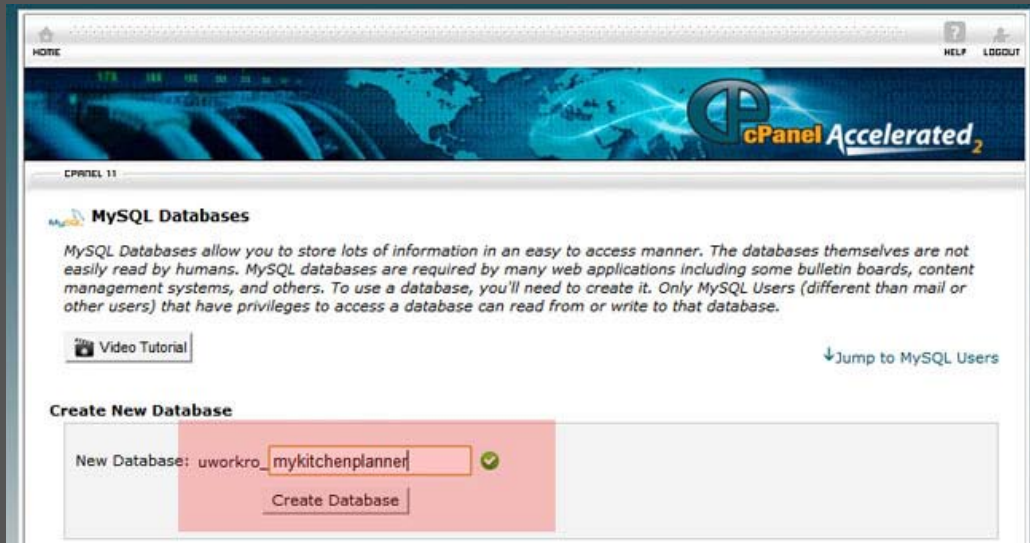
Our instructions installing the script are with **cPanel Accelerated 2**, but differences are minor if not at all.

1. DOWNLOAD & EXTRACT ZIP FILE
2. CREATE MySQL DATABASE/IMPORT .sql

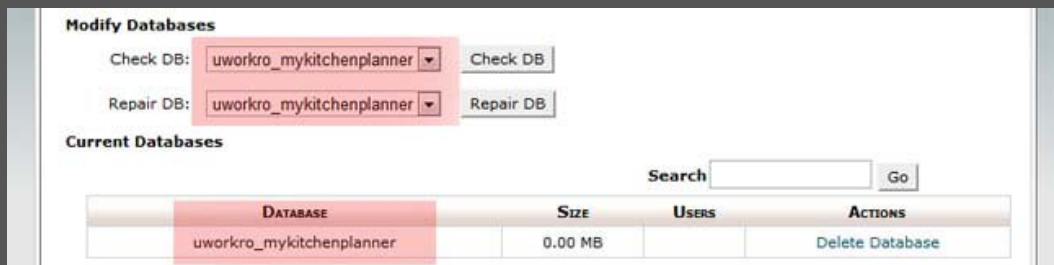
On the CPanel Main Interface access from Databases section the **MySQL Databases**.



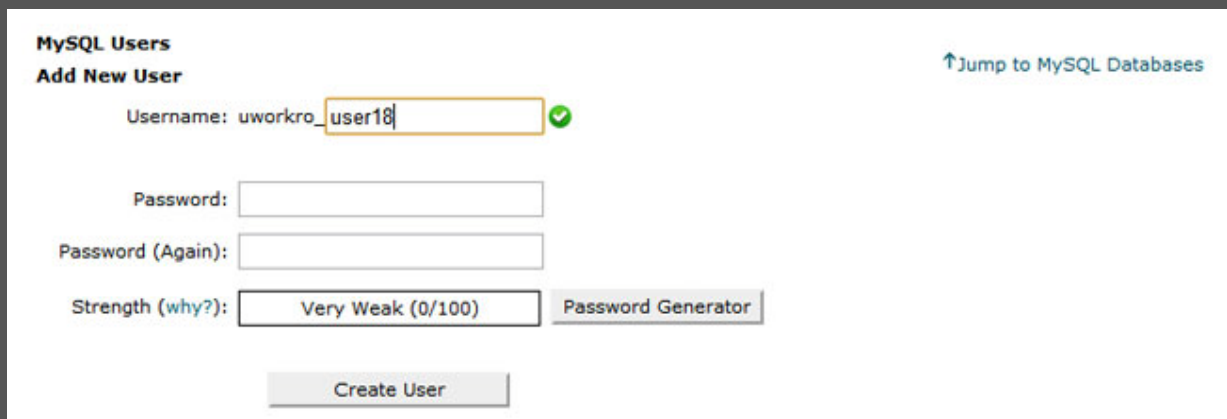
After you clicked MySQL Databases see **Create New Database** first page section and on **New Database**, type your desired database name. Hit **Create Database** button.



After you clicked **Create Database** button your page should look like this:



You will need to create a user account in order to access your database. You have below on your page **MySQL Users/Add New User** section. Fill in the user name and password to create your desired account for your database created earlier above. Hit **Create User** button.



**Add User to Database** section, select your desired user (in case are more than 1 user accounts) and select your desired database (in case are more than 1) and hit **Add** button. After you hit **Add** button to add user to your database a window with **User Privileges** will appear and we recommend checking **ALL PRIVILEGES** in order for your account to work properly with our script.

**MySQL Account Maintenance**

**Manage User Privileges**

User: **uworkro\_user18**  
Database: **uworkro\_mykitchenplanner**

<input checked="" type="checkbox"/> <b>ALL PRIVILEGES</b>	
<input checked="" type="checkbox"/> ALTER	<input checked="" type="checkbox"/> CREATE
<input checked="" type="checkbox"/> CREATE ROUTINE	<input checked="" type="checkbox"/> CREATE TEMPORARY TABLES
<input checked="" type="checkbox"/> CREATE VIEW	<input checked="" type="checkbox"/> DELETE
<input checked="" type="checkbox"/> DROP	<input checked="" type="checkbox"/> EXECUTE
<input checked="" type="checkbox"/> INDEX	<input checked="" type="checkbox"/> INSERT
<input checked="" type="checkbox"/> LOCK TABLES	<input checked="" type="checkbox"/> REFERENCES
<input checked="" type="checkbox"/> SELECT	<input checked="" type="checkbox"/> SHOW VIEW
<input checked="" type="checkbox"/> UPDATE	

**Make Changes**

After you hit **Make Changes** button you will have user and database name ready to go forward with script installation.

You need to go back to **CPanel** main page and select from **Databases** page section **phpMyAdmin** and **Import** the **.sql** file included in our edition package.

### 3. CONFIG.PHP

Go to php Kitchen Planner script root folder where you unzipped. Here you will have to make connection with your database through 2 **config.php** files.



Name	Date modified	Type	Size
admin	7/7/2012 7:18 PM	File folder	
ajax	7/6/2012 6:05 PM	File folder	
Classes	7/6/2012 6:05 PM	File folder	
css	7/6/2012 6:05 PM	File folder	
door_types	7/6/2012 6:05 PM	File folder	
flash	7/6/2012 6:05 PM	File folder	
html_pages	7/7/2012 6:58 PM	File folder	
images	7/6/2012 6:05 PM	File folder	
js	7/6/2012 6:06 PM	File folder	
libs	7/6/2012 6:06 PM	File folder	
pages	7/6/2012 6:06 PM	File folder	
templates	7/6/2012 6:06 PM	File folder	
templates_c	7/6/2012 6:14 PM	File folder	
uploads	7/6/2012 6:09 PM	File folder	
.htaccess	7/6/2012 6:04 PM	HTACCESS File	1 KB
body	7/6/2012 6:04 PM	PHP Script	2 KB
codsecuritate	7/6/2012 6:04 PM	PHP Script	4 KB
config	7/7/2012 7:18 PM	PHP Script	2 KB
getPage	7/6/2012 6:04 PM	PHP Script	2 KB
getUnitPic	7/6/2012 6:04 PM	PHP Script	3 KB
includes	7/6/2012 6:04 PM	PHP Script	1 KB
index	7/6/2012 6:04 PM	PHP Script	2 KB
logo	7/6/2012 6:04 PM	Icon	6 KB

Each **config.php** represents a script module like: **Main** and **Admin**. The first config.php, can be found in your script root. Is the main configuration file and here you will be able to type your database information gathered a little bit earlier above on CPanel. Open it with an editor (Notepad, WordPad, Dreamweaver etc.). Let's say you've opened with Dreamweaver, you will find something like in the below image.

```

1  <?
2  ##### CONNECTION WITH THE DATABASE #####
3  define("DB_HOST"      , "[LOCALHOST]"          ); // type your database host
4  define("DB_USER"      , "[USER]"               ); // type database user
5  define("DB_PASS"      , "[PASSWORD]"           ); // your database password
6  define("DB_DATABASE"  , "[DATABASE NAME]"       ); // your database name
7  #####
8  define("WEBSITE_URL"  , "URL/"); // type your URL
9  define("WEBSITE_NOREPLY_EMAIL", "contact@digitalartflow.com");
10 define("WEBSITE_CONTACT_EMAIL", "contact@digitalartflow.com");
11 ##### DEFINE ADMIN VARS #####
12 define("SERVER_PATH"  , getcwd());
13 define("PROGRAM_PATH", SERVER_PATH);
14 ##### DIVERSE #####
15 define("SECRET_PHRASE", "secretPhrase");
16

```

Your interest lies only on **CONNECTION WITH THE DATABASE** section where you will have to complete 7 rows like: **Database Host**, **Database User**, **Database Password** and **Database Name**, **Website\_URL**, here case sensitive, depending where have you uploaded the script and what domain and hosting account you are using (**Example: <http://yourdomain.com/> or <http://yourdomain.com/kitchenplanner/>**). And the last 2 rows you have to type is your **E\_MAIL** (it will help in receiving interior design orders).

Then you have to add the same database information to the other config.php file found in Admin folder. You will complete this in the same manner like explained above for the first configuration only that you will not have to type **WEBSITE\_URL**. On **Admin** may need to specify the **mysql\_select\_db** which usually is the name of your database and complete bottom config.php page with specific paths:

```

21 ***** SETARI *****
22 $server = array(
23     /*'server_path' => dirname(__FILE__).'/', */
24     'server_path' => '/home/content/87/6010387/html/[YOUR_FOLDER]/' // type server path example: /home/content/87/6010387/html/demo/
25 );
26 $config = array(
27     'siteurl' => '[URL]/[YOUR_FOLDER]/', // type url
28     'site_url' => '[URL]/[YOUR_FOLDER]/', // type URL with www
29     'site_name' => '[NAME]/', // type your site name
30     'secret_phrase' => 'WINTEROUD',
31     'server_path' => '/home/content/87/6010387/html/[YOUR_FOLDER]/', // type server path, example: /home/content/87/6010387/html/demo/
32     'adminurl' => '[URL]/[YOUR_FOLDER]/admin/', // type your admin url path, example: http://digitalartflow.com/demo/admin/
33     'admin_url' => '[URL]/[YOUR_FOLDER]/admin/', // type your admin url path with www
34     'static_admin' => array(
35         'css' => '[URL]/[YOUR_FOLDER]/admin/static/css/', // URL
36         'js' => '[URL]/[YOUR_FOLDER]/admin/static/js/', // URL
37         'img' => '[URL]/[YOUR_FOLDER]/admin/static/img/' // URL
38     ),
39 );
40 ?>

```

#### 4. UPLOAD SCRIPT

After you completed all config.php files with the necessary database information you can now upload your script into your desired FTP address, for more information regarding this part if you're not familiar on how to assign your specific domain name and ftp folder address and where to upload your script or any other information related to installation please contact your hosting service provider.

Make both **config.php** & **admin/pages/login.php** 444 permission, as default this file has **username:** admin and **password:** 123qwe.

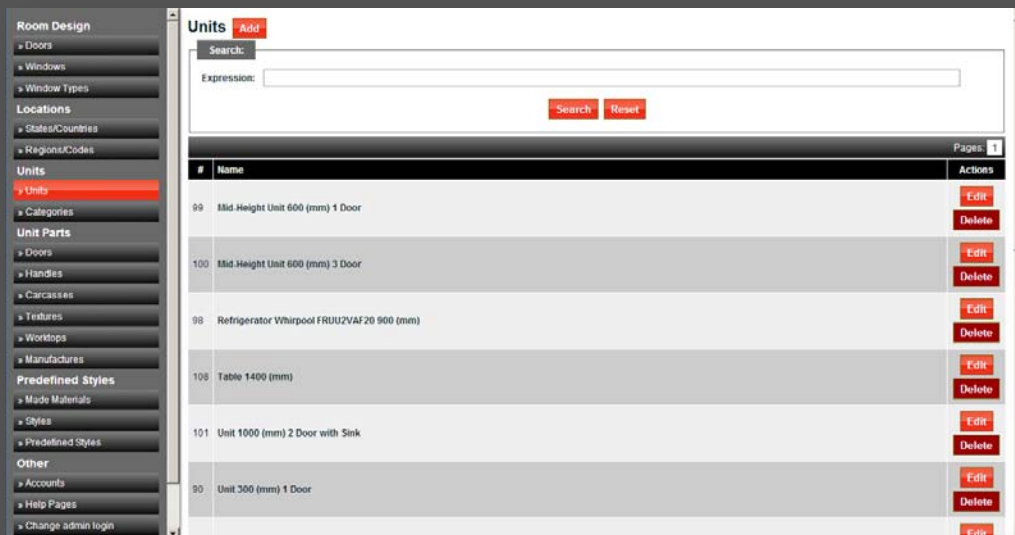
5. Type on your internet browser the URL address to experience for the first time the php Kitchen Planner script

(Example: <http://www.yourdomain.com> or <http://www.yourdomain.com/kitchenplanner>)

## ADMIN (CMS)



The vertical menu in the left presents a number of 6 admin sections, these sections helps in managing your planner content. When you will start to add catalogues into your online interior planner you will use some of these sections. In the admin menu you can add into your interior planner: predefined doors, predefined windows, units (cabinets, appliances and other elements), unit doors, handles, manufactures, textures, worktops, carcasses (construction type cabinets), floors.



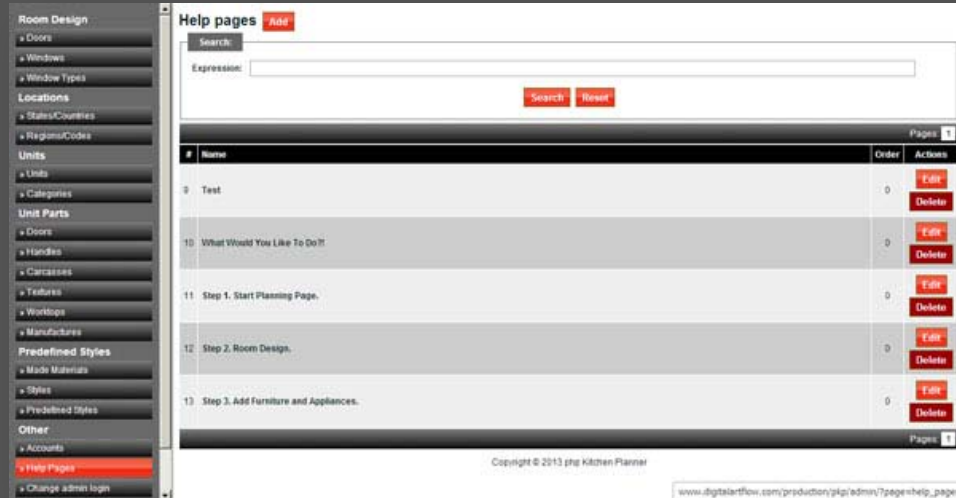
Let's get some quick knowledge on some of the most important ones.

### Admin Menu

#### 1. Help Pages (Other Admin Section)

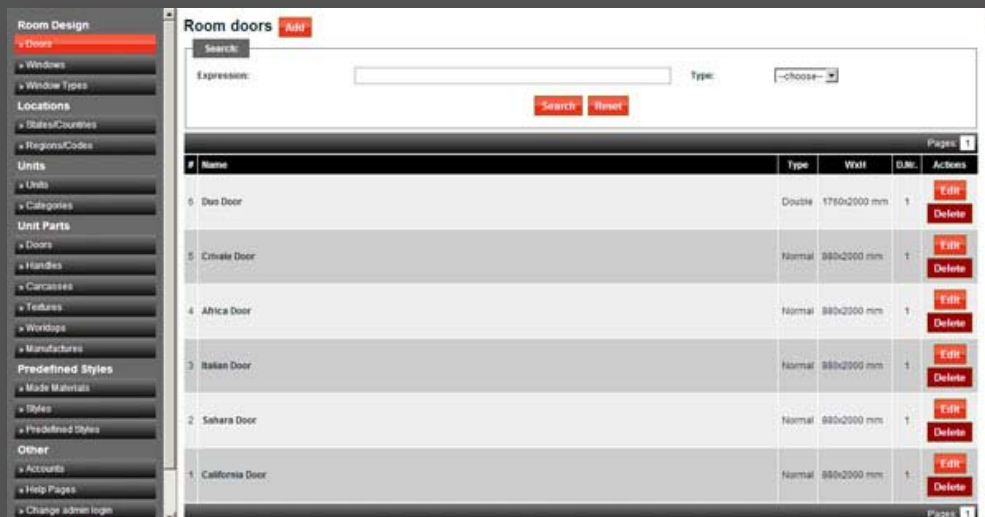


In Help Pages you will write various help/guide materials that users will be able to read in any stage of their room design. You can click “Add” found on header page and create various help pages with images, embed videos and rich text content or you can click “Edit” on already made pages to modify content.



## 2. Doors (Room Design Admin Section)

On this section you can add Predefined Doors; you should know that php Kitchen Planner can create customized doors and predefined doors on wall options at Step 2 Room Design. Predefined doors are auto cropped isometric 3d projections of already rendered PNG images. If you prefer to have into your interior planner script some particular detailed door models then predefined doors is the answer. Here on Room Doors you can upload PNG 3D isometric images of your preferred door models.



Click "Add" on top page or "Edit" on each added door on right side to access door options like: name, type, sizes and upload thumbnail image and PNG 3D Isometric images in 4 angles like in the image below.

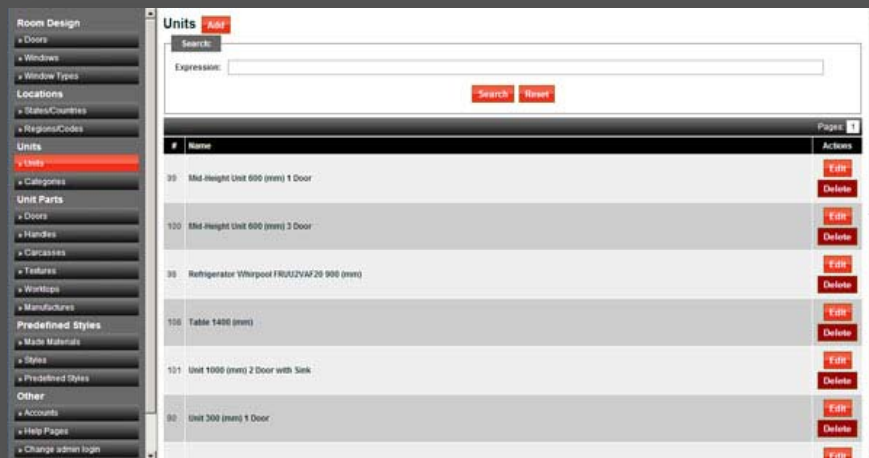
### 3. Windows (Room Design Admin Section)

On "Windows" section you can add Predefined Windows. php Kitchen Planner gives you the opportunity to customize your window or create predefined windows to choose from. Click "Add" or "Edit" to upload thumbnail image and PNG 3D Isometric Projections in 4 angles of your window. The method is pretty much the same as Doors.

On the main vertical menu, below Windows you have Window types where you can create any window category you desire.

### 4. Units (Units Admin Section)

Units are important, because in this section you add/upload your items: cabinets/units, worktops, handles and appliances in your interior planner. This section is a little bit more complex than the above sections. A unit is actually a set of elements (like: cabinet variations/textures, worktops and handles) that are combined in various ways depending on user preferences.



When adding a new unit you can add to that specific unit multiple handles, multiple doors, multiple worktop textures and multiple cabinet/texture variations. User will select his preferred combination for his room design from the elements uploaded on your particular unit.

When you add one unit in your interior planner you will have to assign the category/ies that the specific unit will take part.

We have 4 Tabs in Edit Unit/Add Unit: Unit info, Handles, Tops and Variations.

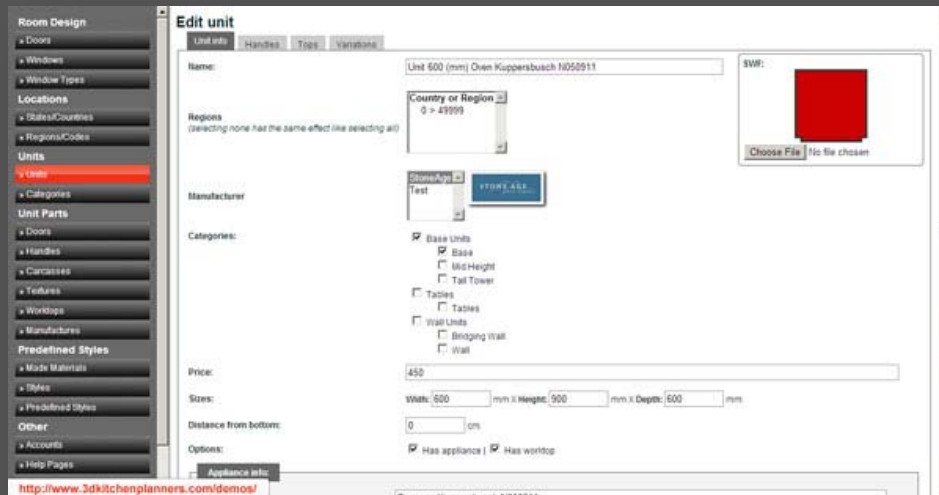
#### Unit info TAB

On Categories check the category (Example: Base units, Tall units, Wall units etc.) that fits the best for your new unit. Above Categories you can give to your unit a Name.

Other unit options on Unit info tab:

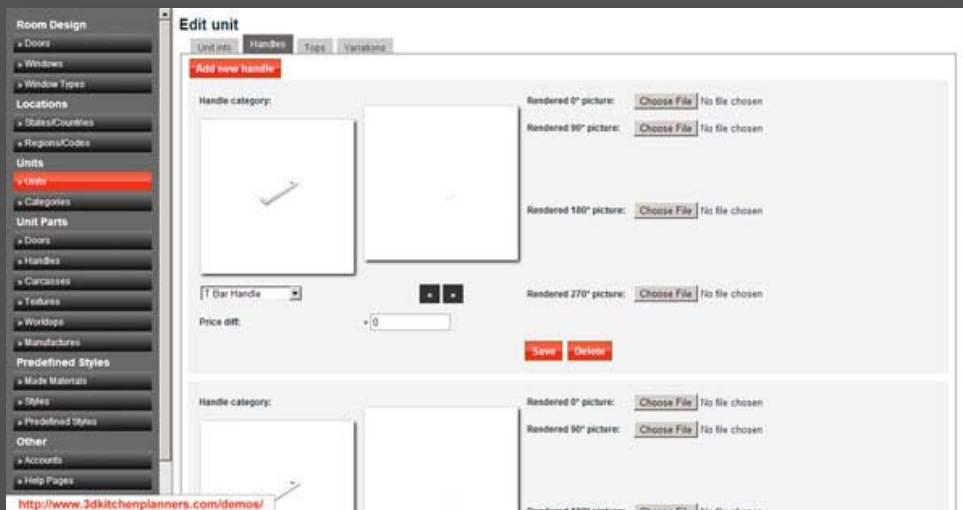
- Regions
- Has appliance – If the cabinet has appliance or not.
- Manufacturer
- Price – Cabinet's price
- Width (mm) – Cabinet's width
- Height (mm) – Cabinet's height
- Depth (mm) – Cabinet's depth
- Distance from bottom – distance of a cabinet from floor (used mainly for wall units) measured in cm.
- Has worktop – If cabinet contains worktop
- Appliance Info
- Unit Description

- Upload SWF – Here you will need to upload your .swf 2D projection image of your cabinet. This file image .swf will load when you drag cabinets into your room on Step 3. You can preview your 2D flash file in your upper right side page.



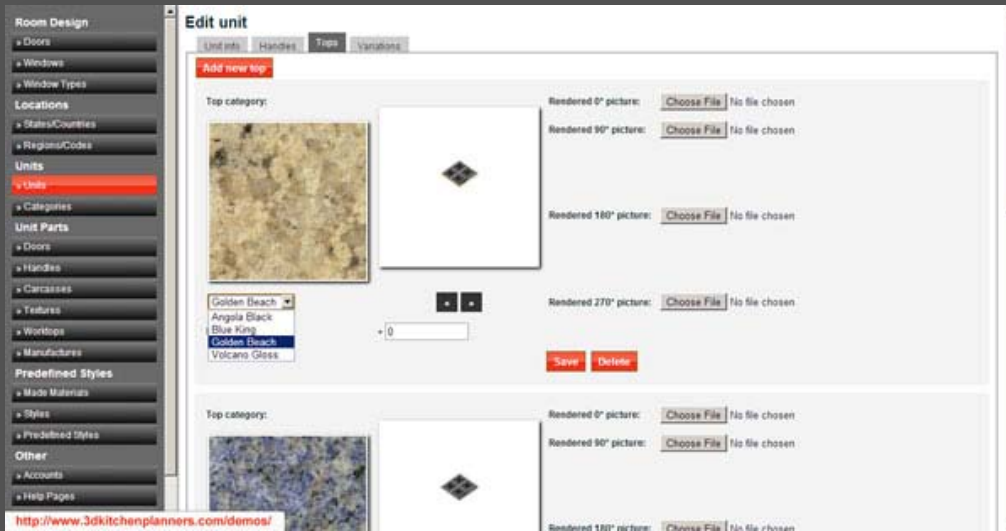
## Handles TAB

Add handle models to your unit. You can preview in 3D your uploads in Admin.



## Tops TAB

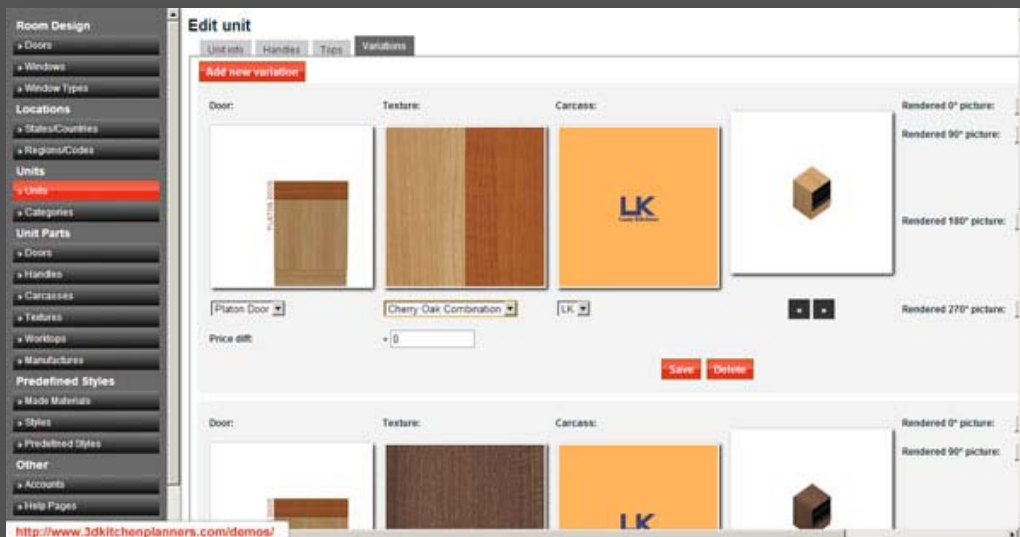
Add worktops to your unit. You can preview in 3D your uploads in Admin.



## Variations TAB

Add textures to your unit. These are object rendering of cabinets with specific textures and appliances (if available). You can preview in isometric 3D your uploads in Admin.

**NOTE:** Important to add handles and worktops before adding another variation for your unit.



## 5. Doors (Unit Parts Admin Section)

You can add pieces of your units from which user can select. Like Doors from Unit Pieces Admin Section. The options are very intuitive and easy to use.

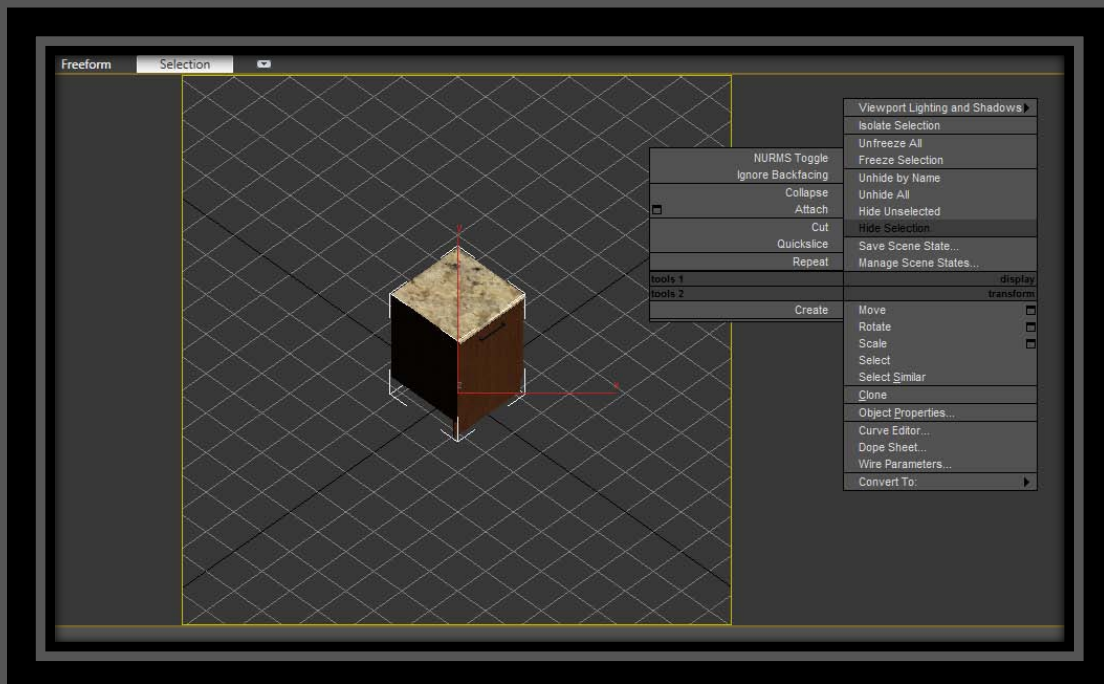
You can precede the same with the rest of the functions from the Unit Parts like: Handles, Carcasses, Textures, Top Textures and Manufactures.



## UPLOAD ITEMS

When we grasp UPLOAD ITEMS we say modeling, rendering and uploading through Admin into your 3d interior planner script.

It is recommended to be familiar with 3d Studio Max or Maya in order to recreate your catalogues in 3D. Digital Artflow offers 3d rendering services, more details about our 3d studio division here below.



If you're planning to create renderings with another vendor or just doing yourself, on your bought edition you will find 3d max scenes for rendering windows, doors and units. Important not to move cameras, keep 1024 resolution render and be sure to put the same sizes (mm) on your 3d max scenes and admin **Unit info**.

**NOTE:** On window and door renders **very important on 90 degree PNG images** need to keep this pixel space (red line) to align properly on your 3d isometric projection. See samples. Currently we are working on the bug.



### Digital Artflow In-House Rendering and Uploading Services

**php Kitchen Planner** is a powerful 3D isometric online interior planner solution developed by Digital Artflow. Along with its features, customization and maintenance services, Digital Artflow also provide rendering services to populate and update product catalogues inside the **MySQL** database that php Kitchen Planner uses.

#### Content:

1. Why do I need renderings for php Kitchen Planner?
2. Understanding 3D modeling and rendering process
3. Rendering costs

#### 1. Why do I need renderings for php Kitchen Planner?



Php Kitchen Planner is an online selling platform for interior assets; your leads (potential customers) can interact with your items in 3D. In order for php Kitchen Planner to work, the script needs to generate the items selected by your leads. For each item you will need to import into MySQL database: **rendering layers** and **item information**.



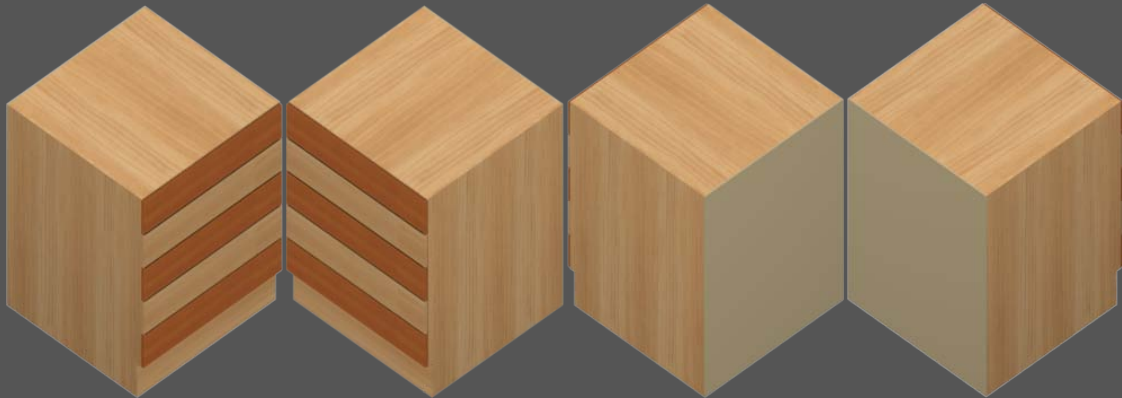
## 2. Understanding 3D modeling and rendering process.

It is important for the business owner or/and developer to understand what a **“unit”** represents in php Kitchen Planner. A **unit** is a set of rendering layers that once grouped together (through selection) makes up an **item** (an item can be a: kitchen cabinet, appliance, chair, table etc.). Each layer is rendered in **4 angles** because our current viewport supports **4 angle camera rotations**. The following rendering layers are:

- **Unit carcass:**
  - a. Carcass 3D modeling (size and shape)  
**Example:** 30x70x60 cm
  - b. Carcass texture/material mapping  
**Example:** combination of 2 oak textures
  - c. Door model (size and shape)  
**Example:** door with glass or/and various designs
  - d. Door texture mapping  
**Example:** 2 oak texture combinations since we used it on the carcass above



Rendering sample on 4 angles:



- **Handle:**

- a. Handle 3D modeling  
**Example:** half-moon shape
- b. Handle texture/material mapping  
**Example:** silver

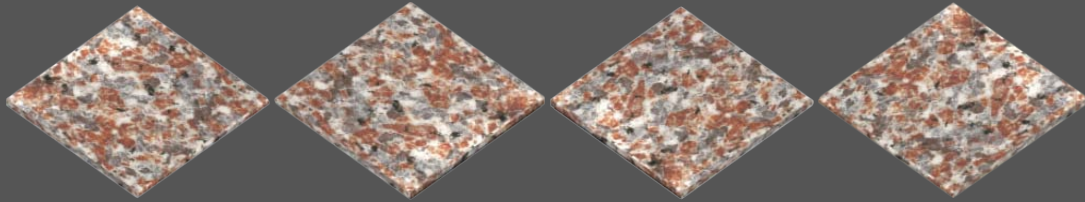
Rendering sample in 4 angles:



- **Worktop** (bench top granite or other materials, size must be compatible with carcass above in our case):
  - a. Worktop 3D modeling  
**Example:** square or corner shape, round edge
  - b. Worktop texture/material mapping

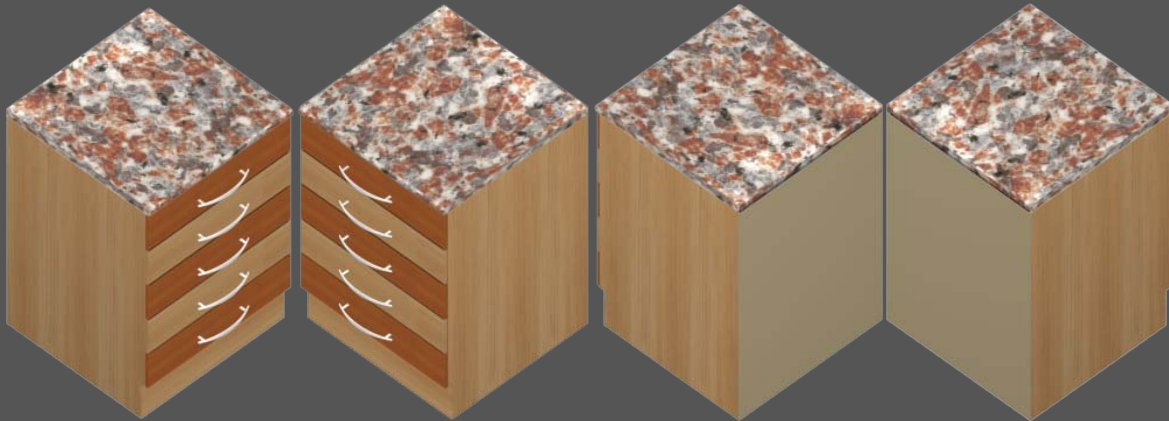
**Example:** granite

Rendering sample in 4 angles:



- **MySQL** information: title, description, price, category, thumbnails, etc.

For the above layers php Kitchen Planner will output on users viewport like in the below images:



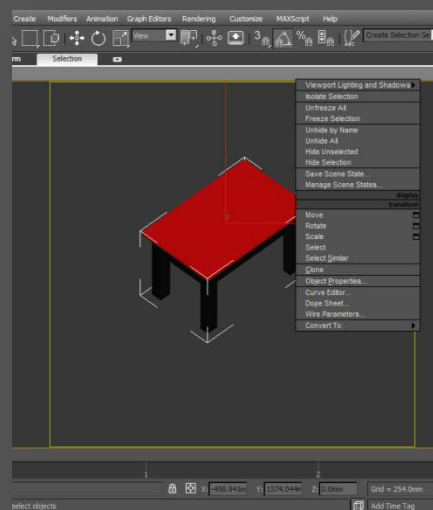
Then for this unit you can add separately more textures, handles, worktops etc. depending on your product catalogue and what you request to upload into your database.

MySQL Information about the unit:



Please read the **manual** for more information on how you can add/update units in Admin area.

In order to render these layers they need first to be modeled and textured. Both editions contains predefined scenes included compatible with **3D Studio Max** and **Maya** modeling platforms from where we (or any other 3D artist) can start to model your catalogues.



### 3. Rendering costs

In the following chart below the costs are included with rendering and import procedure for a complete update of your product database. In the first row we have listed the number of renderings for reference. The cost references are provided for kitchen cabinets without any particular shapes other than box-like shape. Depending on client requests and workload prices may differ slightly from this chart.

Nr. of units/Cost for (USD)	1	10	40	80	100	Discount (applied on more than 10 units)
Carcass 3D modeling & rendering	3	25.5	102	204	255	15%
Carcass texture/material mapping	1	8.5	34	68	85	15%
Door 3D modeling & rendering	3	25.5	102	204	255	15%
Door texture/material mapping	1	8.5	34	68	85	15%
Handle 3D modeling & rendering	3	25.5	102	204	255	15%
Handle texture/material mapping	1	8.5	34	68	85	15%
Worktop 3D modeling & rendering	2	17	68	136	170	15%
Worktop texture/material mapping	1	8.5	34	68	85	15%
Import	0	0	0	0	0	0%

**\* Calculus example:** If there are 5 door type modelings you multiply: 5 times **how many carcasses** times 8 the price of each door model = ?.

Before you decide to order a number of rendered units are important to know what texture, handle model and worktop texture you will use on those units.

# php Kitchen Planner

---

php Kitchen Planner is a powerful online interior design software solution. Simple, robust, with no particularly high hardware requirements and no extra-programs installs requirements, php Kitchen planner was created to reduce costs, through quick implementation. The script has a back-end Admin access, from which you can administrate your personalized interior planner script. Easy to install, easy to use, easy to manage.

php Kitchen Planner has been developed by Digital Artflow.

We are a team with combined experience in 3D and web development, who has, along its path, brought its contribution to various web solutions for a wide range of customers, post-production stages, animations and architectural visualization renderings.

Our studio prouds itself with 5 years of experience in 3D rendering and web development.

Every story is unique, but ours is more beautiful than others, because we have written it slowly, through work and dedication.