

## The M68000 Educational Computer Board

*A look at Motorola's \$495, 68000-based single-board computer*

by Robert W. Floyd

If you're interested in getting acquainted with Motorola's 68000 16-bit microprocessor but can't part with \$5000 or more, Motorola offers a usable system for only \$495. For that price, don't expect a disk drive and a Unix operating system, but do expect a 68000-based single-board computer with 32K bytes of RAM (random-access read/write memory) and what may be the best monitor program in ROM (read-only memory) ever developed.

At \$495 per unit, Motorola is not going to get rich by selling its Educational Computer Board (ECB). Obviously the strategy is to educate the coming generation of engineers and programmers about the 68000, with the expectation that they will design products that use the 68000. In addition to its intended audience of educators and students, this board is of interest to both hobbyists and people involved in developing 68000-based products. It is *not* a development system, but its interpretative assembler and disassembler make it handy to quickly test short routines.

### The 68000

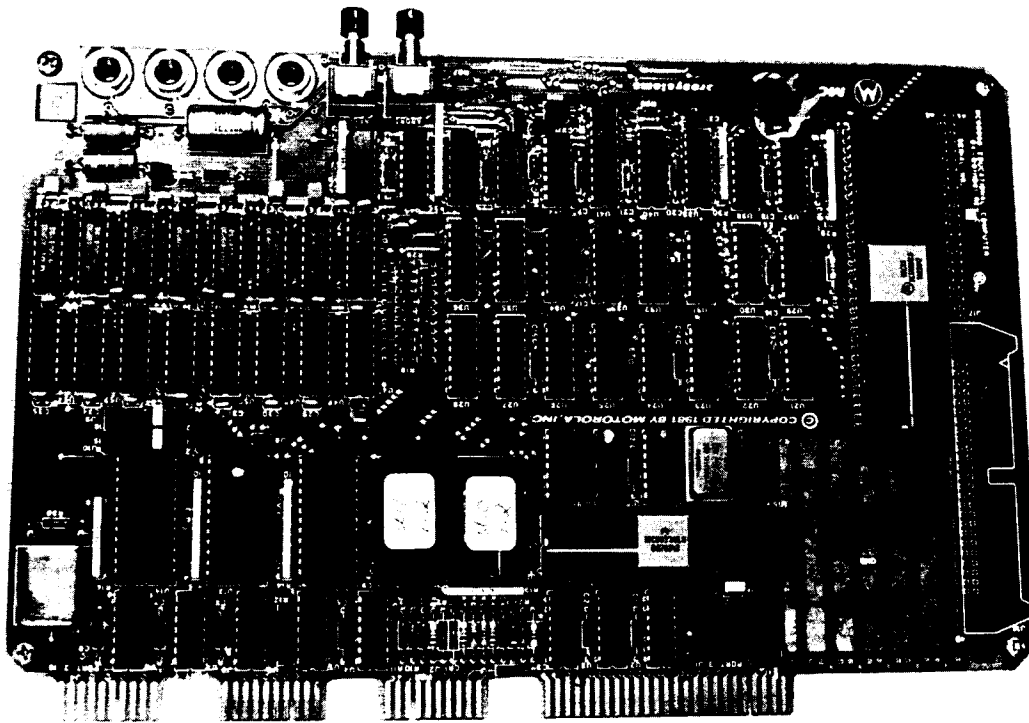
The 68000 is becoming an increasingly important microprocessor in today's market, as evidenced by the frequent announcements of products using the 68000. The chip is expandable by design, and Motorola has announced that a full 32-bit version will be available in 1984. Before jumping on the bandwagon, however, you should

know that the 68000 is not just a bigger version of the old 8-bit microcomputer; it is considerably more complex than many of the 16-bit minicomputers popular since the 1970s.

Before reviewing the system, I'll briefly highlight some of the major differences between the 68000 and the old 8-bit devices we're familiar with. The machine language supports byte, word (16-bit), and long-word (32-bit) operations. It has eight data registers and eight address registers, each 32 bits wide. Except for one register, *A7*, which is always the current stack pointer, all address and data registers are treated identically.

The processor operates in two states: user and supervisor. Certain instructions are legal only in the supervisor states. Once in the user state, the processor will stay there until an *exception* occurs. Exceptions may be caused by resets, interrupts, bus errors, a variety of runtime errors, and executions of TRAP. Besides some of the interrupt conditions, all exceptions are auto-vectored; when the exception occurs, the processor gets the address of the exception-handling program from a specific location in memory. These exception vectors take up the first 1K bytes of memory and should all be initialized immediately after a reset occurs if you don't want your processor going off in strange directions.

The large number of 16-bit op codes makes a greater assortment of instructions possible. In the 68000, these possibilities appear as both new operations and a vari-



**Photo 1:** The very large integrated circuit (IC) in the upper right is the 68000. The other large IC near the wire-wrap area is the 48-pin MC68230 parallel interface/timer. The two serial interface ICs are at lower left. The edge connectors on the bottom are, from left to right, serial port 2 (host), serial port 1 (terminal), port 4 (cassette recorder), and port 3 (Centronics-type parallel printer).

ety of addressing modes for the standard operations. Most of these operations fall into the general scheme of supporting higher-level languages. These include instructions such as a branch subroutine (BSR), which allows relative branches to any address within 32K words above the program counter's address; the LINK and UNLINK instructions, which ease the construction of reentrant subroutines; and the move-multiple-registers instruction (MOVEM) for quickly saving registers. In addition, 12 addressing modes contain many instructions. These different modes are available for data transfer and logical and arithmetical operations. They can also be used in some of the transfer-of-control operations. In other words, a jump to subroutine (JSR) doesn't have to go to an absolute address—it might go to the address calculated by adding a data register to an address register plus an immediate value included in the instruction (by the way, that's one I haven't used yet). The result of this addressing arrangement is that it takes skill to write a program shorter than 64K bytes that is *not* relocatable, and it is very easy to write reentrant subroutines.

If Motorola simply added eight more address and eight more data lines to an 8-bit processor, only 56 pins would be needed. You well might ask what other functions have been added to require 64 pins. First, the 68000 is asynchronous in operation; it will not terminate any bus cycle until it recognizes that data transfer is complete, which is normally done by having the memory or pe-

ripheral device assert a data transfer acknowledge (DTACK). Because not all devices run asynchronously, the 68000 has a provision for synchronous devices, particularly those designed for the old 6800 microprocessor. In this case, a line called valid peripheral address (VPA) is used instead of DTACK.

When the 68000 detects this signal, it replies with a valid memory address (VMA) signal and synchronizes the bus operation to the Motorola 6800 E cycle. To provide more flexibility in the interrupt structure, three interrupt control lines produce seven levels of interrupts. Three bus arbitration lines allow DMA (direct memory access), refresh, and so on. One last note—RESET is bidirectional, so the 68000 can execute an instruction that resets all peripheral devices but does not affect operation of the processor.

### Hardware

Let's take a look at what you get for \$495. The ECB is a single-board computer measuring 7½ by 10½ inches. The quality of construction is excellent. The board's edge contacts as well as its traces are gold plated. The ECB provides a 68000 operating at 4 MHz, a 16K-byte ROM monitor, 32K bytes of dynamic RAM, two RS-232C serial interface ports, and the MC68230 parallel interface/timer (PIT) that provides a cassette tape recorder interface, a Centronics-type printer interface, a 24-bit timer, plus

**TANDON**  
**WAREHOUSE SALE!**  
 CLEARANCE • CLEARANCE • CLEARANCE • CLEARANCE • CLEARANCE

VERBATIM

WABASH BULK

APPLE AND FRANKLIN  
 USERS

TRS-80 USERS

SUPPLIES

PRINTER BUFFERS

WE ACCEPT  
 • Visa  
 • MasterCard  
 • Checks  
 • Money Order  
 • C. O. D.

ALL PRICES  
 ARE FOR  
 MAIL ORDER ONLY  
 Prices, Specifications  
 and Offerings subject  
 to change without  
 notice.

ADD \$3.00 FOR  
 SHIPPING  
 & HANDLING  
 \$6.00 Extra for  
 C. O. D. Orders  
 Ohio Residents  
 add 6% Sales Tax

MOST SCHOOLS  
 AND GOVERNMENT  
 PURCHASE  
 ORDERS  
 ACCEPTED

Mnemonic	Function
HE	help; displays Tutor commands
MD	memory display
MM, M	modify memory
MS	store into memory
.A0-.A7	display/set address registers
.D0-.D7	display/set data registers
.PC	display/set program counter
.SR	display/set status register
.SS	display/set supervisor stack pointer
.US	display/set user stack pointer
DF	display formatted registers
OF	display offset registers
.R0-.R6	display/set offset registers
DC	convert decimal to hexadecimal
BF	block of memory fill
BM	block of memory move
BS	block of memory search
BT	block of memory test
BR	set a breakpoint
NOBR	remove breakpoint
GO, G	execute user program
GT	execute until breakpoint
GD	execute without setting breakpoints
TR, T	trace
TT	temporary breakpoint trace
DU	dump memory to a port
LO	load memory from a port
VE	verify memory load/dump
PA	printer attach
NOPA	reset printer attach
PF	port format
TM	transparent mode
*	send message

Table 1: The commands available in the Tutor monitor.

some uncommitted I/O (input/output) pins for a user to play with (see photo 1).

The MC68000L4 microprocessor in this kit is the slowest version Motorola makes of this chip, running at 4 MHz (compared to 12½ MHz for the fastest version). Remember: this board was designed for educators, not benchmark freaks. Yet even at this leisurely pace its minimum instruction time is only 1 microsecond. Because any given instruction on a 16-bit chip generally does a lot more than a single instruction on an 8-bit microprocessor, the throughput of a slow 16-bit chip is several times greater than that of the fastest 8-bit machine.



## At a Glance

### Name

M68000 Educational Computer Board (Motorola part # MEX68KECB)

### Manufacturer

Motorola Inc.  
Microsystems Division  
3102 North 56th St.  
Phoenix, AZ 85018  
Distributed by Hamilton/Avnet Electronics

### Hardware

Single-board computer, 6½ by 10½ inches, containing a 68000 microprocessor running at 4 MHz; 16K-byte monitor ROM; 32K-byte dynamic RAM; two serial I/O ports with data rate individually selectable from 110 to 9600 bps; MC68230 parallel port/timer that provides three 8-bit parallel ports with handshaking; audio cassette I/O; Centronics-type printer port; and wire-wrap area. Operation requires an external power supply (+5V at 750 mA, +12V at 100 mA), RS-232C-compatible video terminal, and connecting cable

### Software

16K-byte monitor ROM with most of the functions of the Motorola Macsbug plus interpretative assembler, disassembler, printer and tape recorder functions, and a series of TRAP #14 functions that allows user program access to most of the monitor data conversion and I/O routines

### Options

Interface cables to connect computer board to terminals, printers

### Price

\$495

### Warranty

90-day warranty includes parts, labor, and return shipping

### Documentation

Over 450 pages, including data sheets on LSI circuits, a software manual for the 68000, and a manual on the ECB hardware and monitor

### Audience

Educators, students, hard-core hobbyists, and 68000 systems developers who would like to use the ECB as a supplementary aid

the price of the board. Table 1 lists the monitor commands provided in Tutor. Most of them resemble those of run-of-the-mill monitors, but a few require some explanation. Note the variety of addressing commands for Tutor. Most other monitor commands work only in the immediate mode (the user enters the explicit physical address), but Tutor has eight separate addressing modes. The most important of these are absolute, absolute plus the contents of an offset register, address register indirect, address register plus displacement indirect, and memory indirect.

One of the more sophisticated monitor commands is .Rn, which enables you to display and modify any of the eight special registers. Remember that the 68000 programs are intrinsically relocatable. These registers help users write position-independent code by being automatically added to addresses specified in Tutor commands. For example, it's generally easier to write assem-

bly-language programs starting at an even address, such as 1000 hexadecimal. If you are following the book *68000 Assembly Language Programming* by Gerry Kane, Doug Hawkins, and Lance Leventhal (Berkeley, CA: Osborne/McGraw-Hill, 1981), you will notice that all the programs in the book start at 4000 hexadecimal. However, if more than one program is being used, the others have to reside somewhere else in memory.

Assigning the starting addresses of the routines to offset registers makes testing the routines a lot easier. Let's try an example. Assume you have a routine that starts at 4F7E hexadecimal and you'd like to test a piece of code hexadecimal 1A6 bytes from the origin. If adept at this sort of thing, you could perform hexadecimal arithmetic, come up with 5124, then type GO 5124. An easier way of doing this is to set R1=4F7E and then type GO R1+1A6 (or whatever displacement you need). The same technique is used for looking at the *n*th item of a buffer and checking the value in a peripheral chip.

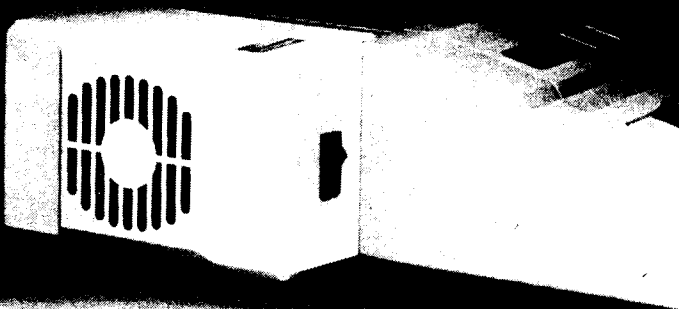
The block search command (BS) lets you search through any block of memory looking for either ASCII (American National Standard Code for Information Interchange) strings or binary data. This is useful when looking for particular memory references, such as I/O locations. The block fill command (BF) is useful for zeroing memory or buffers or for setting ASCII buffers to all space characters. The GO command starts program execution at a specified location, but a return from subroutine (RTS) will not return to the monitor. To do so, you have to use a special TRAP instruction.

In transparent mode (TM), the ECB acts as a dumb terminal to a host computer. Everything received on port 1 is immediately transmitted on port 2. I was able to use the TM command to good advantage when installing the ECB in my Heath H-19 video terminal. Internally, I wired the output of the H-19 to the terminal port of the ECB, and the ECB's host port to the input of the H-19. When first powered on, the H-19 talks to the ECB; but once TM is executed, it behaves like a normal H-19.

DU (dump) and LO (load) commands let you dump automatically formatted binary files either to or from memory. Normally this command is used with port 4 for a tape recorder or with port 2 to a host computer. The VE (verify) command reloads a program saved using the DU command and verifies that it matches what is in memory. The contents of memory can be either dumped or loaded using the DU and LO commands, respectively. Memory is dumped in what Motorola designates "S" records, which consist of header and data dumps in hexadecimal ASCII. You can use the DU command with all supported I/O channels (terminal, host, printer, and cassette tape). The LO command supports input from all but the printer. Because data is transferred in hexadecimal ASCII instead of straight binary, 2 bytes need to be saved for every single byte of actual data, which can be annoying when you have to wait two minutes to load a 4K-byte file.

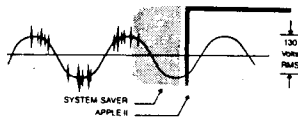
Probably the two most important parts of the monitor are the assembler and disassembler. These features are

# System Saver<sup>SM</sup>



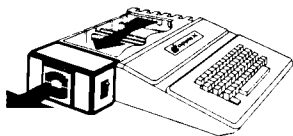
## For Line Surge Suppression

SYSTEM SAVER provides essential protection to hardware and data from dangerous power surges and spikes. Dangerous voltage spikes are clipped off at a safe 130 Volts RMS/175 Volts dc level. High frequency noise is smoothed out before reaching the Apple II.



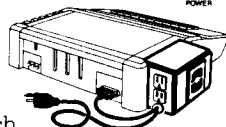
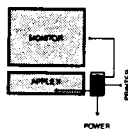
## For Cooling

Today's advanced peripheral cards generate more heat. In addition, the cards block any natural air flow through the Apple II creating high temperature conditions that substantially reduce the life of the cards and computer itself. SYSTEM SAVER's fan exhausts 15 cubic feet of air per minute.



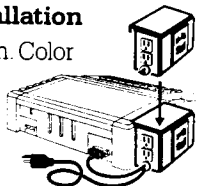
## For Operating Efficiency

SYSTEM SAVER contains two switched power outlets. SYSTEM SAVER efficiently organizes your system so that one convenient, front mounted power switch controls SYSTEM SAVER, Apple II, monitor and printer. The heavy duty switch has a pilot light to alert when system is on. You'll never use the Apple power switch again. Also available in 220/240 Volt. 50/60 Hz.

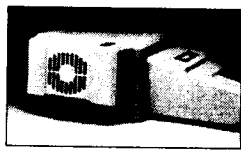


## Easy Installation

Just clips on. Color matched to Apple II.



## Fits on Apple Stand



\$89.95 at dealers everywhere or order direct by phone or mail. For phone or mail orders include \$2.50 for handling. New York State residents add sales tax. VISA and MASTERCARD accepted. Dealer inquiries invited.

**K KENSINGTON  
MICROWARE**

919 Third Avenue • New York, NY 10022 • (212) 486-7707  
Telex: 236200 KEN UR

004030	FFFF	DC.W	\$FFFF ?.
TUTOR	1.1 > MD 4000 2F;DI		
004000	307C6000	MOVE.W	\$24576,A0
004004	4280	CLR.L	D0
004006	1018	MOVE.B	(A0)+,D0
004008	6724	BEQ.S	\$00402E
00400A	43E80001	LEA.L	1(A0),A1
00400E	08810000	BCLR	\$0,D1
004012	5340	SUBQ.W	\$1,D0
004014	600E	BRA.S	\$004024
004016	8308	CMPL.B	(A0)+,(A1)+
004018	630A	BLS.S	\$004024
00401A	1420	MOVE.B	-(A0),D2
00401C	10E1	MOVE.B	-(A1),(A0)+
00401E	12C2	MOVE.B	D2,(A1)+
004020	08C10000	BSET	\$0,D1
004024	51C8FFFF	DBF.L	D0,\$004016
004028	08010000	BTST	\$0,D1
00402C	66D2	BNE.S	\$004000
TUTOR	1.1 > MM 402E;DI		
00402E	4E73	RTE	? RTS_

Photo 2: The assembly and disassembly functions, invoked by typing DI after a memory display or memory modify command. Assembly is done line by line—the code at the current memory is first disassembled and followed by a question mark. The programmer then types in the correct code, and the original code is overwritten with the new. Any value not recognized as a valid op code is disassembled as the declare word (DC.W) pseudo op.

of much greater necessity than their counterparts on an 8-bit computer. Many times I've hand-assembled 100 or so lines of 6502 code, but I wouldn't even think of hand-assembling more than one line of 68000 code. Each instruction must be coded on a bit-by-bit basis, and the results must be converted to hexadecimal.

The assembler is a line-by-line interpretative routine, invoked by typing the MM (memory modify) command, the starting address, and the DI option. The assembler first disassembles the code at the current location, then prompts the programmer to enter the new instruction to be assembled. The new instruction is then written over the original. This process requires a video terminal because a printing terminal would type the new instruction over the old, resulting in illegible copy. Because it is a line-by-line assembler, labels can't be used in the operand field. Previously defined offsets, however, can be used. For forward references (address unknown), the \* can be used. This generates the code for a jump to the location of the operation just assembled. When the entire routine has been written, it can be disassembled and the correct memory location inserted at all instructions that branch to themselves.

The disassembler may be invoked in the same manner as the assembler: it disassembles one line at a time. To get a complete listing, the MD (memory display) command can be used with the DI option (see photo 2). The listing can be directed to all four I/O ports. However, the

# EXPOTEK

2723 W. Windrose  
Phoenix, Arizona 85029

1-800-528-8960

Guaranteed Low Prices

THIS MONTH'S SPECIAL  
DAISYWRITER 2000  
CALL

## for the IBM

TANDON 100-2DD	\$245
QUADRAMCARDS	CALL
16K RAM CHIPS	
SET OF 9	\$1575
64K MEM/UPGRADE	\$80
SOFTWARE	CALL

## COMPUTERS ALTOS

580-10	\$4199
586-10	\$5498
586-14	\$7680
8600-12	\$8399

## ATARI SAVE \$ CALL NORTHSTAR

ADVANTAGE	\$2150
W/15MB	\$4310

## TELEVIDEO

802	\$2515
802H	\$4449
803	\$1845
1603	CALL

## TERMINALS

### ADDS

VIEWPOINT A1	\$485
VIEWPOINT A2	\$550

## HAZELTINE

ESPRIT I	\$498
ESPRIT II	\$540

## TELEVIDEO

910	\$555
925	\$699
950	\$865
970	\$1015

## DISKDRIVES

FOR APPLE	
MICOR SCI A2	\$255
RANA ELITE I	\$260
RANA ELITE III	\$540
FOR ATARI	
RANA 1000	\$375

## PRINTERS

### CITOH

F1040	\$1090
F1055	\$1499
1550P	\$599
8510P	\$345

## SILVEREED SAVE \$ CALL DATASOUTH

DS120	\$595
DS180	\$1169

### DIABLO

620	\$895
630RO	\$1710

### NEC

3510	\$1365
3550	\$1705
7710	\$1900
8023	\$399

## OKIDATA SAVE \$ CALL

## MONITORS

### AMDEK

300 GREEN	\$129
300 AMBER	\$145
310 AMBER (IBM)	\$199
COLOR I	\$275

### BMC

GREEN	\$88
COLOR	\$299

## APPLECARDS

16K RAM	\$69
Z80	\$235
VIDEX 80 COLUMN	\$227
VIEWMAX 80	\$175
MICROSOFT PREM. PK	\$465

## DISKETTES

ELEPHANT SS/SD	\$18.00 BX
SCOTCH SS/DD	\$22.00 BX
DYSAN SS/SD	\$33.00 BX
(100 MIN. ON DISKS)	

ALL PRICES SUBJECT TO CHANGE  
CUSTOMER SERVICE (602) 863-0759

software does not support reading anything other than "S" files from the tape recorder, and I have not yet found a way of retrieving disassembled listings from tape.

Motorola does not supply source listings of the Tutor program, which could be a pain for anyone writing I/O routines, but it does support a large number of user-available routines that can be accessed through the TRAP #14 instruction. The TRAP function is the only graceful way to enter supervisor mode from user mode. The function desired is passed as a parameter in register D7. Currently, 28 different I/O and utility routines are available to the user through the TRAP, and 127 additional numbers are available for user-defined functions.

Tutor is the only software available for the ECB. As dedicated software hackers get the board, this situation will change. I plan to purchase the FORTH source code for the 68000, along with the installation manual, from the FORTH Interest Group (FIG).

## Documentation

When you first open the shipping container, the board seems dwarfed by the nearly 500 pages of documentation that come with the system (see photo 3). The documentation consists of a 240-page programming manual for the 68000, a 130-page manual for the educational board, and data booklets on the three major LSI (large-scale integration) chips on the board—the MC68000 microprocessor, the MC68230 parallel interface adapter and timer, and the MC6850 asynchronous communications interface.

I've read a lot of computer documentation and have found, as a rule, that Motorola documentation is the most thorough and intelligible. The documentation for the ECB is no exception. Only the source listing for Tutor is lacking. The documentation is not simple because the computer and its software are complex, but so far I haven't come across any problems that couldn't be solved by reading the book. Overall, the material reflects a standard of excellence I would like to see other manufacturers emulate.

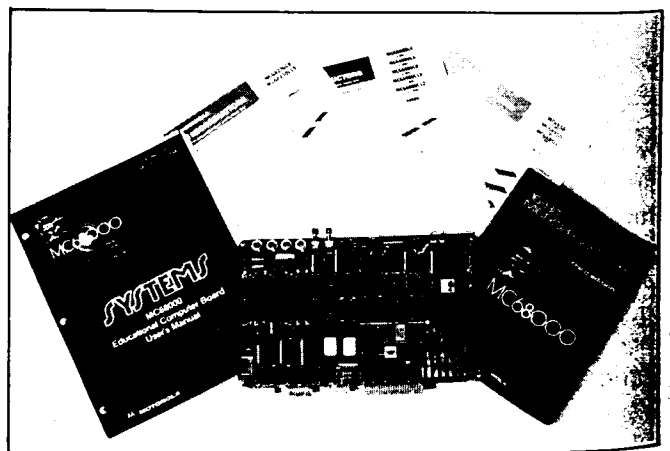
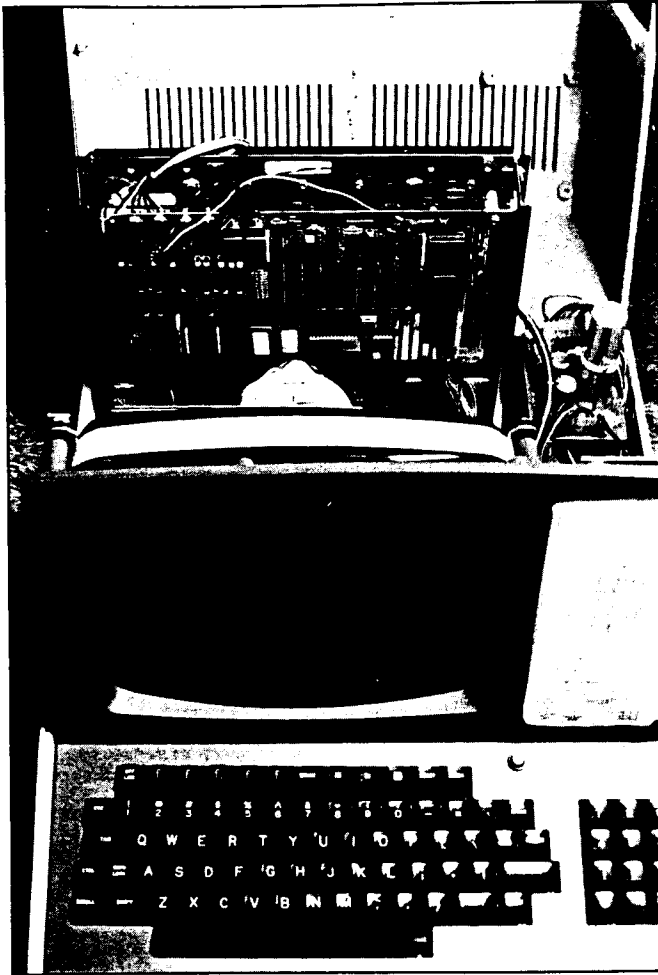


Photo 3: The documentation seems to dwarf the ECB. Clockwise from left are the Educational Computer Board Users' Manual, data books on the MC68230 timer, the 68000, the MC6850 serial interface adapter, and the MC68000 Programmer's Manual.



**Photo 4:** The ECB fits neatly into a Heathkit H-19 terminal. Regulated power is obtained from the H-19 through the wires in the upper left. The serial output of the terminal goes directly to the ECB, and the host port of the ECB is wired to the serial output port of the H-19. Separate holes punched in the rear chassis are for the cassette and disk I/O connectors.

### Homebrew Capabilities

Although the board is designed primarily for educational purposes, it has great potential as the basis of a

homebrew project. In fact, that was my prime motivation in buying the board. Because it starts out with an excellent monitor, 32K bytes of RAM, and some basic I/O functions, I was already on the way to having a system with reasonable capabilities.

I wanted video capabilities, so I installed the board inside a Heathkit H-19 terminal (see photo 4). The ECB draws only a few watts, thus there is no problem with it using the H-19 power supply. The serial output of the H-19 board goes directly into the ECB board, and port 2 of the board hooks to the DB-25 connector on the back. In this way, the system acts like a normal H-19 terminal when the program is in transparent mode.

Because I soon tired of loading programs from tape and had an old 8-inch disk drive I had picked up at a swap meet, I decided to construct a disk controller. The design I used is a modification of Nicholson and Camp's "Super Simple Floppy-Disk Interface" (see May 1981 BYTE, page 360). The interface turned out to be even simpler on the ECB because the 68000 is fast enough to perform some functions in software that had been implemented in hardware on the original design.

### Conclusions

If you are interested in learning about the 68000, and particularly about 68000 assembly language, the ECB is hard to beat. Even if you already have a 68000 development system, the ECB is valuable for writing and testing short routines.

The monitor program alone, which includes an assembler and disassembler, is worth the price of the board. I expect a 16K-byte monitor to be very powerful, and this one is.

The Motorola documentation is excellent but lacks a source listing of the monitor program. However, most of the important I/O and conversion routines are available through the TRAP #14 function. ■

*Robert W. Floyd (1123 Kainui Dr., Kailua, HI 96734) works as a physicist at the Naval Ocean Systems Center, Hawaii Laboratory.*

## C compilers

HOST	6809 TARGET	PDP-11*/LSI-11* TARGET	8080/(Z80) TARGET	8088/8086 TARGET
FLEX*/UNIFLEX* OS-9*	\$200.00 <small>WITHOUT FLEX*</small> \$350.00 <small>WITH FLEX*</small>	500.00	500.00	500.00
RT-11*/RSX-11* PDP-11*	500.00	200.00 <small>WITHOUT FLEX*</small> 350.00 <small>WITH FLEX*</small>	500.00	500.00
CP/M* 8080/(Z80)	500.00	500.00	200.00 <small>WITHOUT FLEX*</small> 350.00 <small>WITH FLEX*</small>	500.00
PCDOS*/CP/M86* 8088/8086	500.00	500.00	500.00	200.00 <small>WITHOUT FLEX*</small> 350.00 <small>WITH FLEX*</small>

\*PCDOS is a trademark of IBM CORP. MSDOS is a trademark of MICROSOFT. UNIX is a trademark of Bell Labs. RT-11/RSX-11/PDP-11 is a trademark of Digital Equipment Corporation. FLEX/UNIFLEX is a trademark of Technical Systems consultants. CP/M & CP/M86 are trademarks of Digital Research. OS-9 is a trademark of Microware & Motorola.

### • FULL C

#### • UNIX\* Ver. 7 COMPATABILITY

#### • NO ROYALTIES ON GENERATED CODE

#### • GENERATED CODE IS REENTRANT

#### • C AND ASSEMBLY SOURCE MAY BE INTERMIXED

#### • UPGRADES & SUPPORT FOR 1 YEAR

C SOURCE AVAILABLE FOR \$2500<sup>00</sup>

408-275-1659

TELECON SYSTEMS  
1155 Meridian Avenue, Suite 218  
San Jose, California 95125