

Service Manual for L1 and L2

Nokia 301

RM-840, RM-841

Nokia 301 Dual SIM

RM-839

Key features

- 2.4 " LCD display (320 x 240 pixels)
- 3.2 Mpix camera
- Dual SIM functionality (RM-839)
- GSM/WCDMA
- MicroSD card support up to 32 GB

Version 1.0

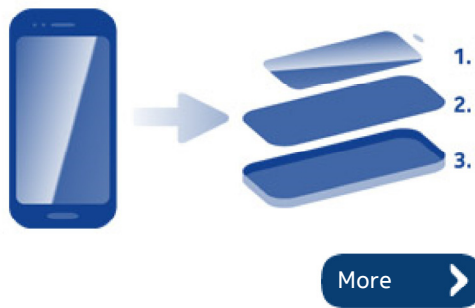
Check the repair policy before performing any mechanical repair on Service Level 1&2!



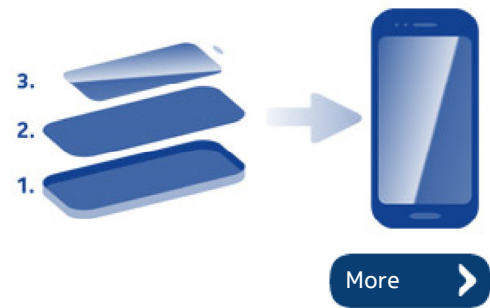
Exploded view



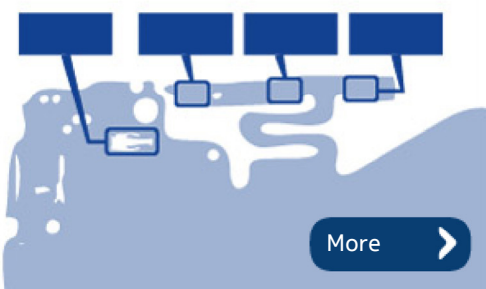
Disassembly steps



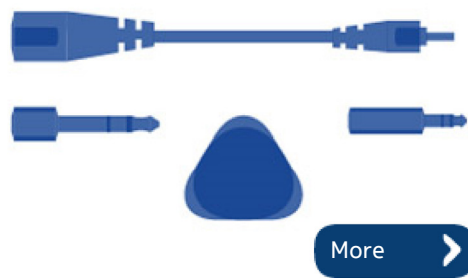
Assembly hints



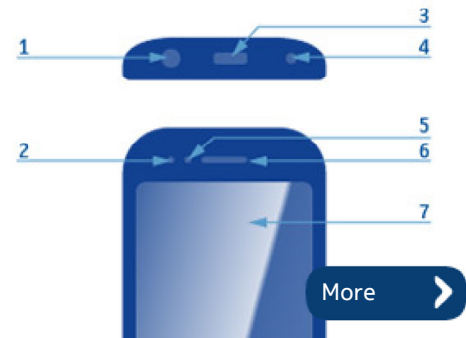
Solder components



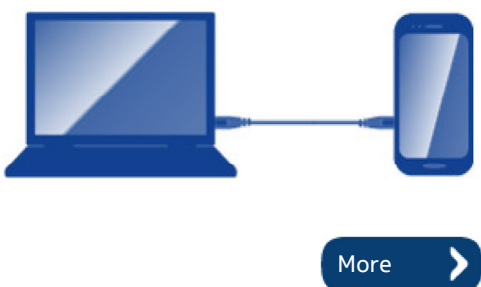
Service devices



Product controls and interfaces



Service concept



Nokia 301 Dual SIM

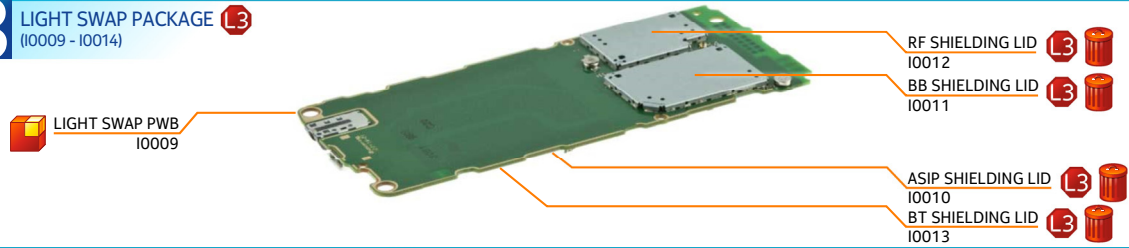
RM-839



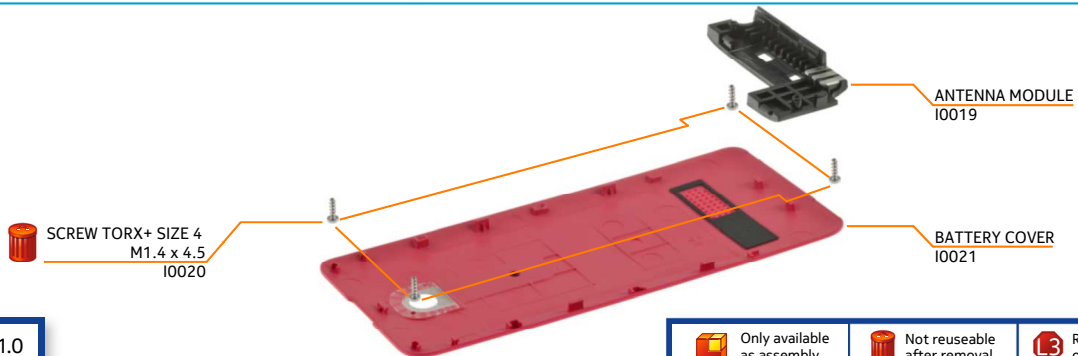
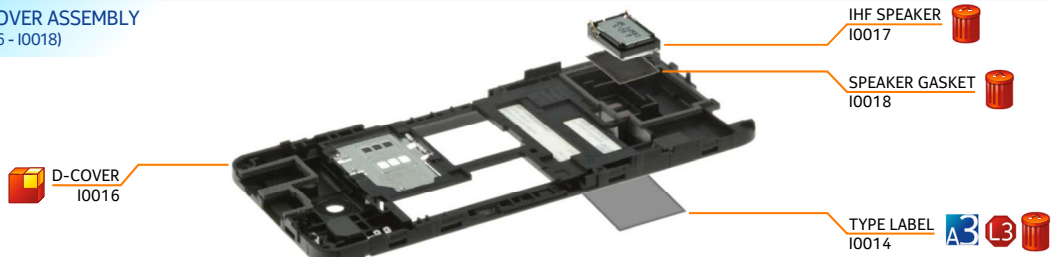
A2 UI SHIELDING ASSEMBLY (I0006 - I0008)



A3 LIGHT SWAP PACKAGE (I0009 - I0014) L3



A4 D-COVER ASSEMBLY (I0016 - I0018)



v1.0

Only available as assembly

Not reusable after removal

Repair/swap only in level 3

Nokia 301

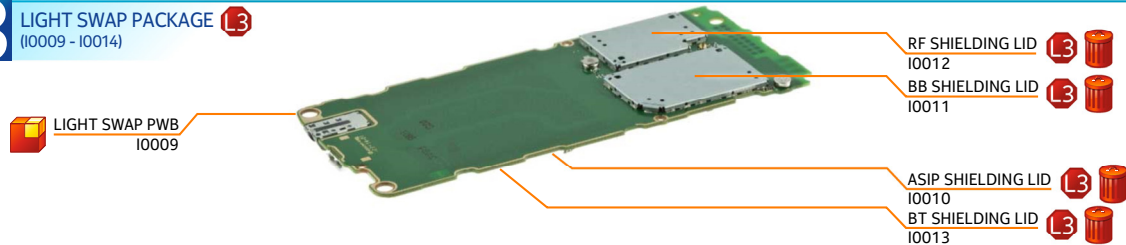
RM-840, RM-841



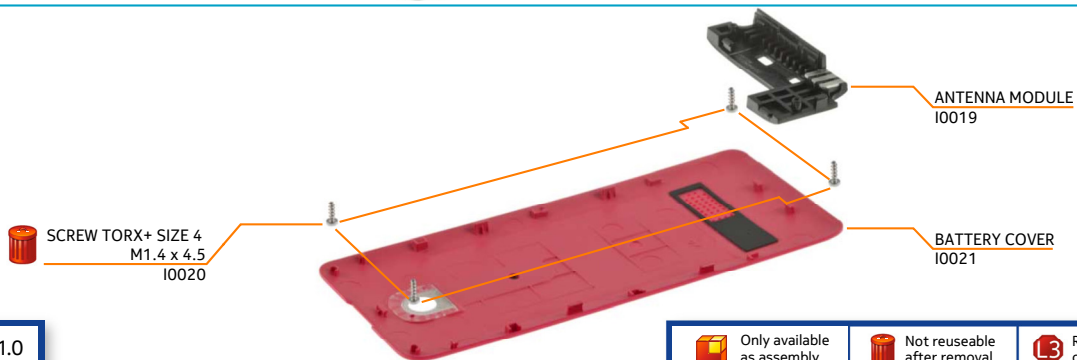
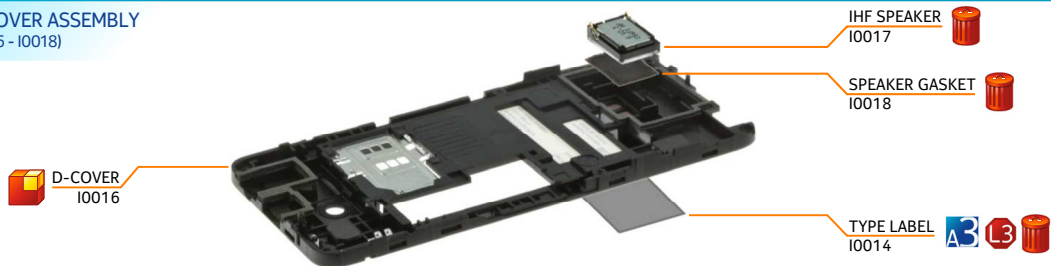
A2 UI SHIELDING ASSEMBLY (10006 - 10008)



A3 LIGHT SWAP PACKAGE ^{L3} (10009 - 10014)



A4 D-COVER ASSEMBLY (10016 - 10018)



v1.0

Only available as assembly

Not reuseable after removal

Repair/swap only in level 3



1) For disassembling you need the Nokia Standard toolkit version 2. You will also need the camera removal tool SS-276.

Note that the device used in this disassembly procedure is the single SIM variant, RM-840/RM-841. All the disassembly steps are the same for both single and dual SIM variants.



2) Protect the A-COVER with protective film.



3) Release the BATTERY COVER by lifting up from the release notch.



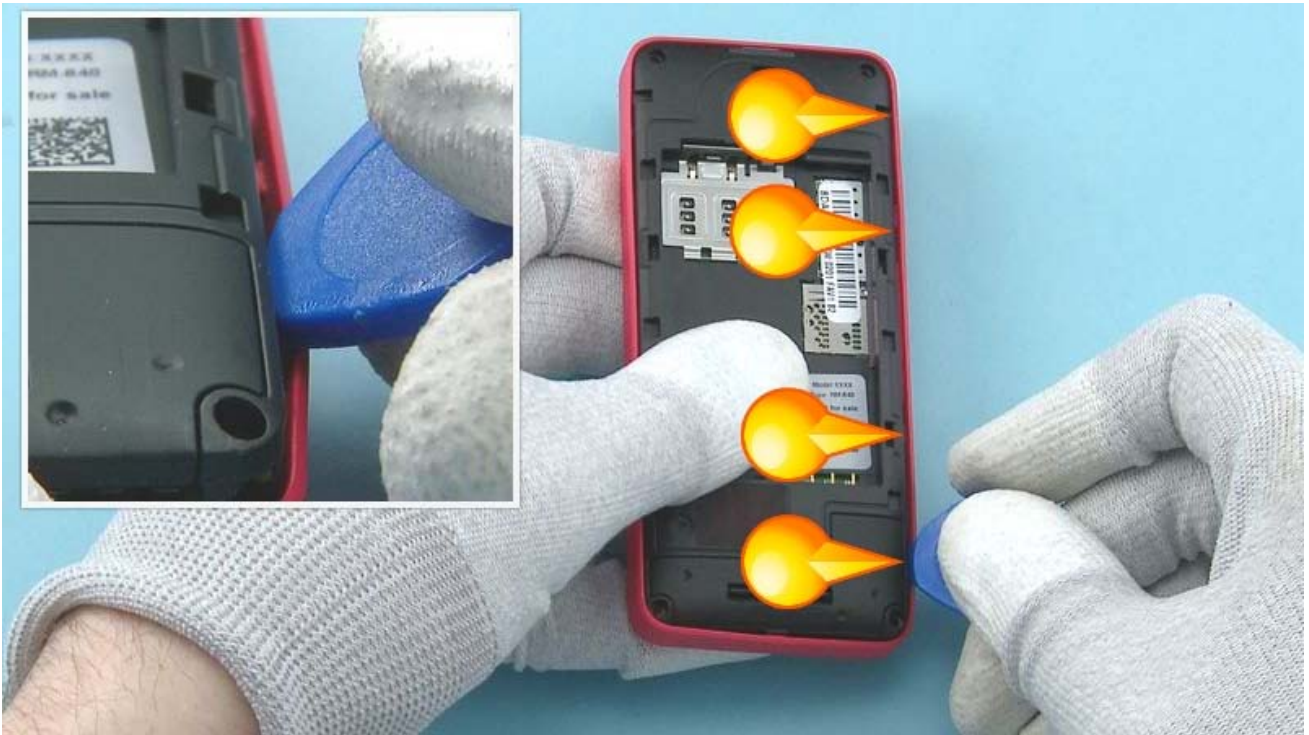
4) Remove the BATTERY COVER.



5) Unscrew the four Torx+ size 4 screws in the order shown. Do not use them again. Discard them.



6) To remove the D-COVER, first release the shown clip on the bottom side with the SRT-6.



7) Then release the clips from the left side, starting from the bottom.



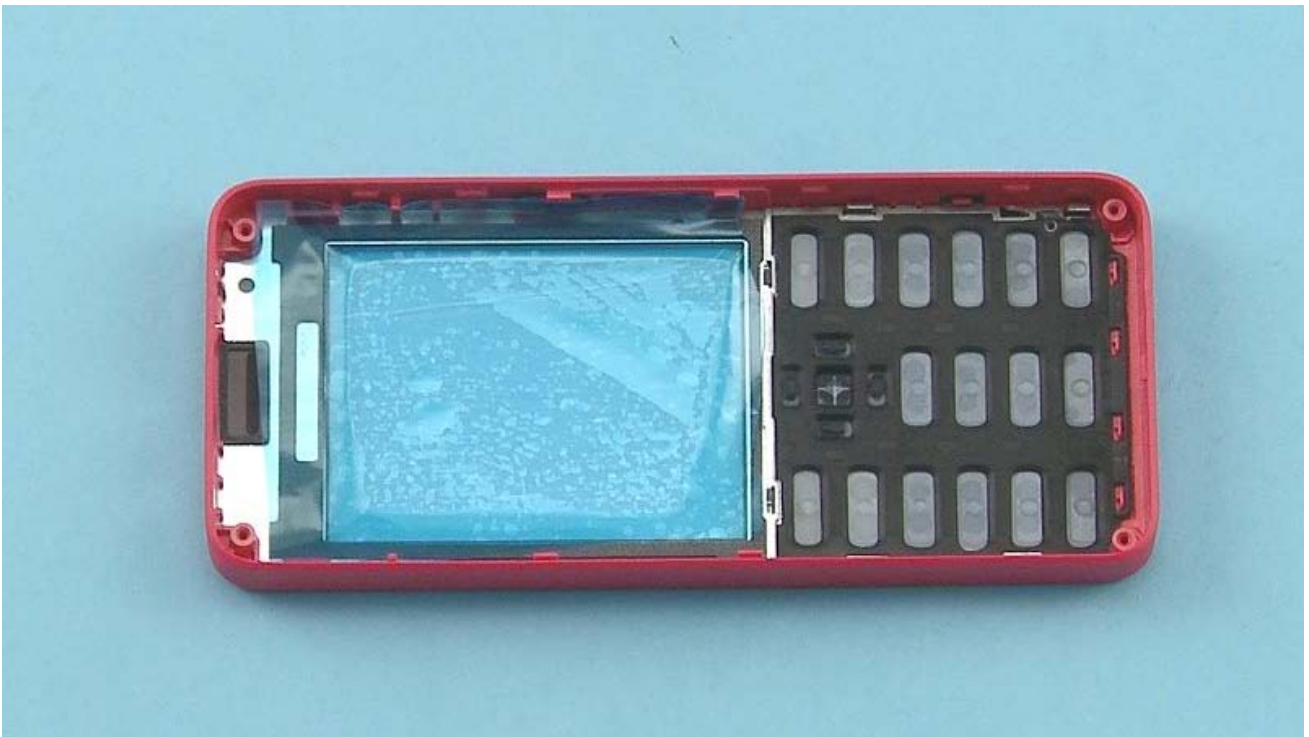
8) Then release the clips from the right side, starting from the bottom.



9) Release also the two clips from the top.



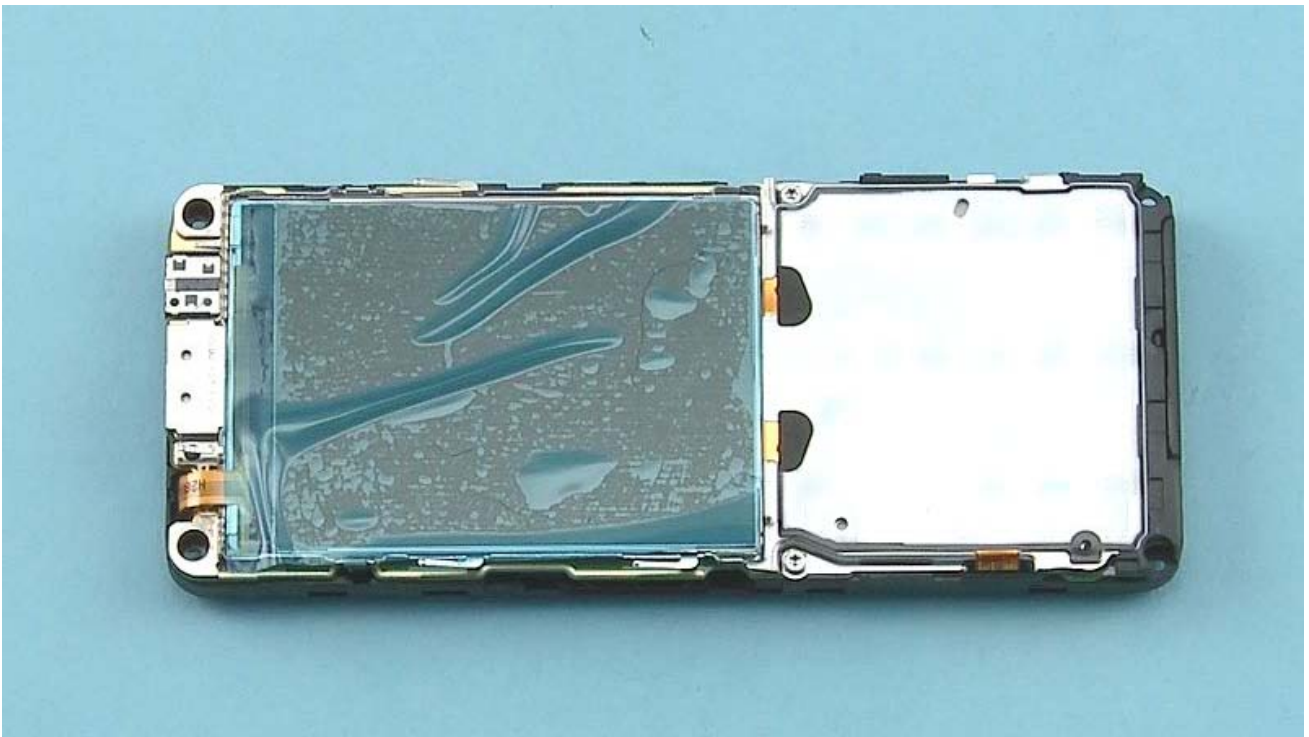
10) Lift up and remove the D-COVER including the ENGINE BOARD and UI SHIELDING.



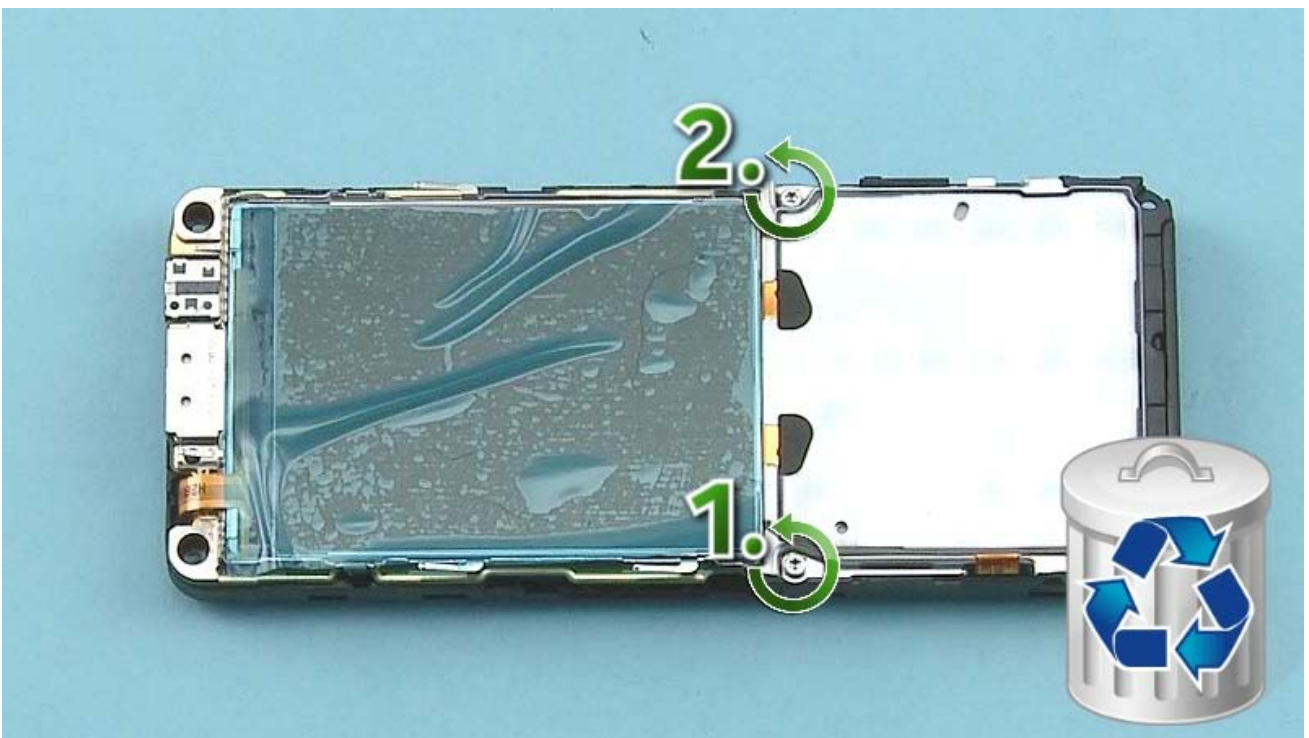
11) Protect the other side of the A-COVER with protective film.



12) Push out the KEYMAT from the A-COVER.



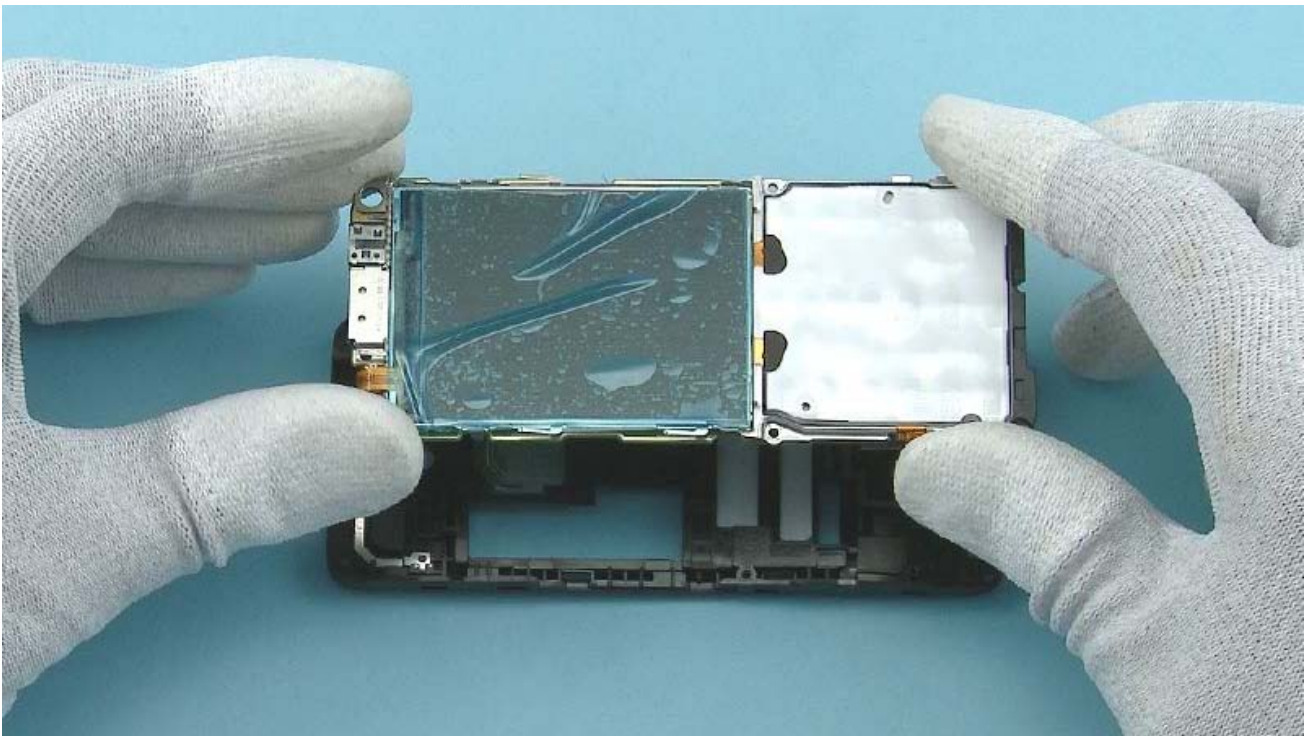
13) Protect the DISPLAY with protective film.



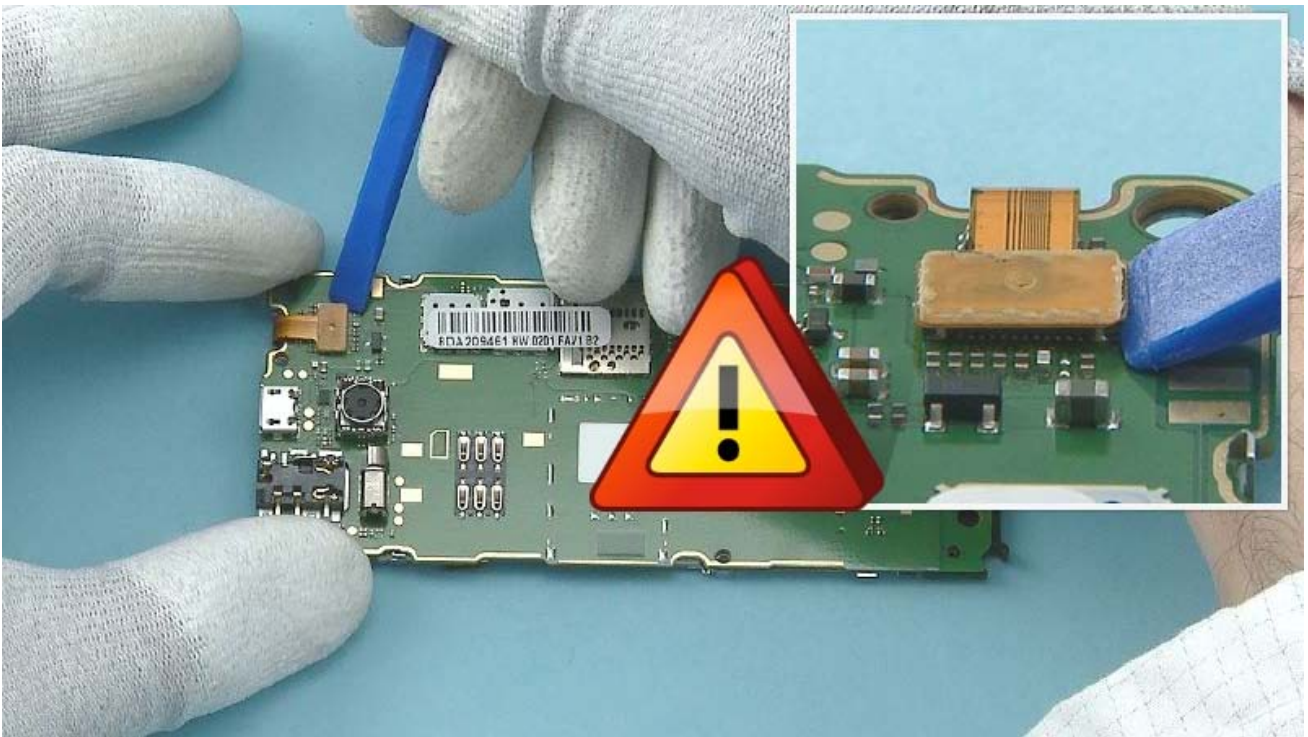
14) Unscrew the two Torx+ size 4 screws in the order shown. Do not use them again. Discard them.



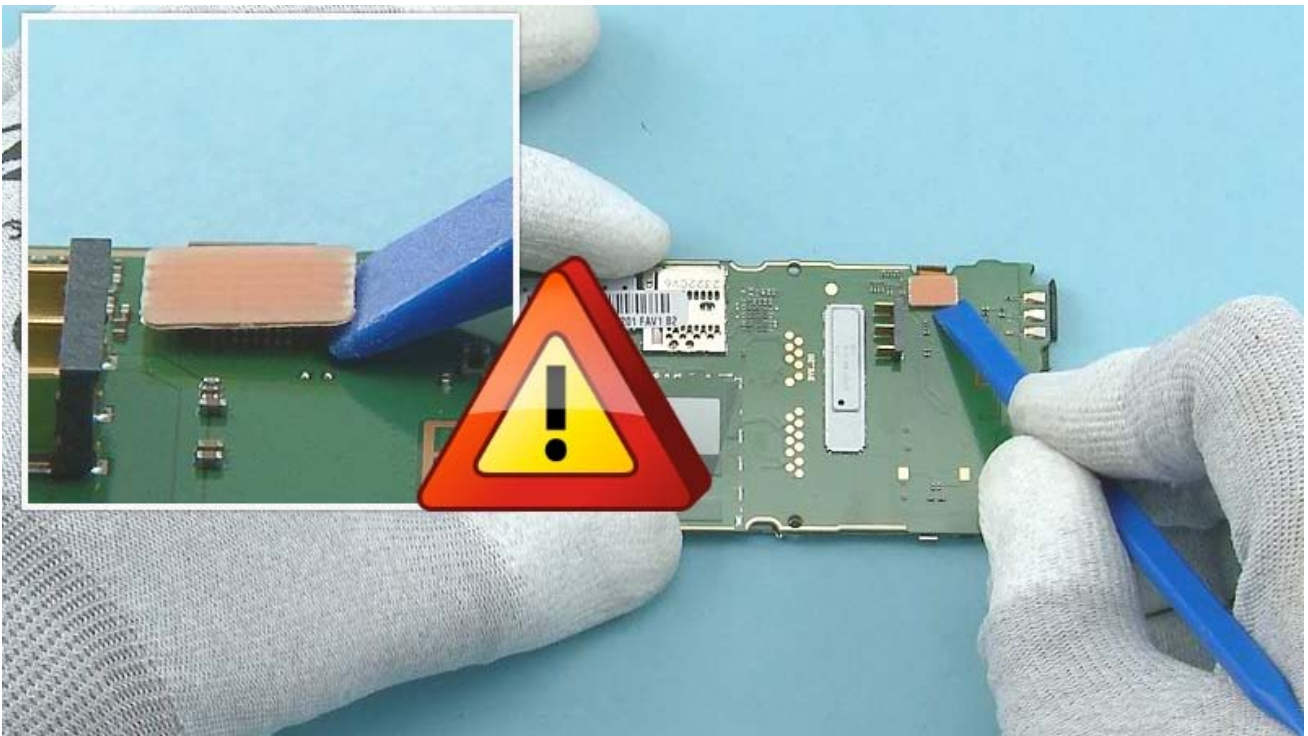
15) Separate the ENGINE BOARD and the UI SHIELDING from the D-COVER by first releasing the bottom corners with the SRT-6.



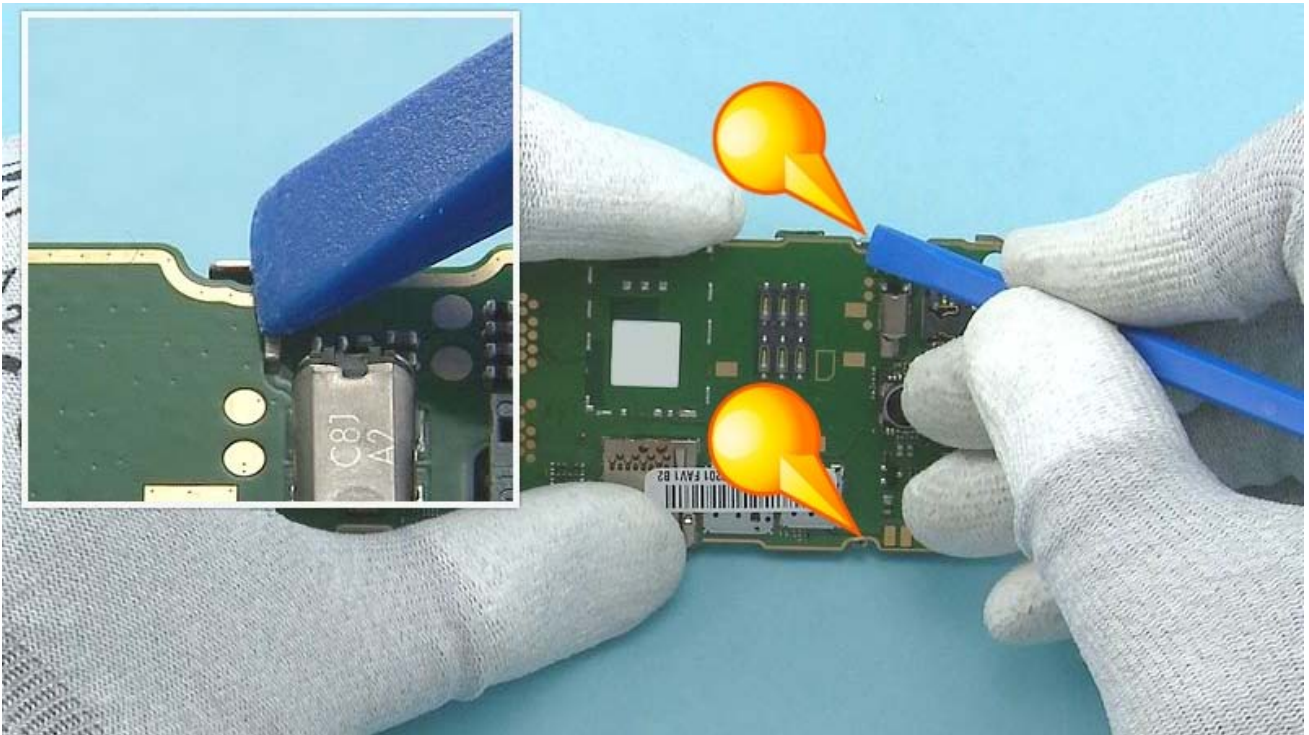
16) Lift up to remove the ENGINE BOARD including the UI SHIELDING from the D-COVER.



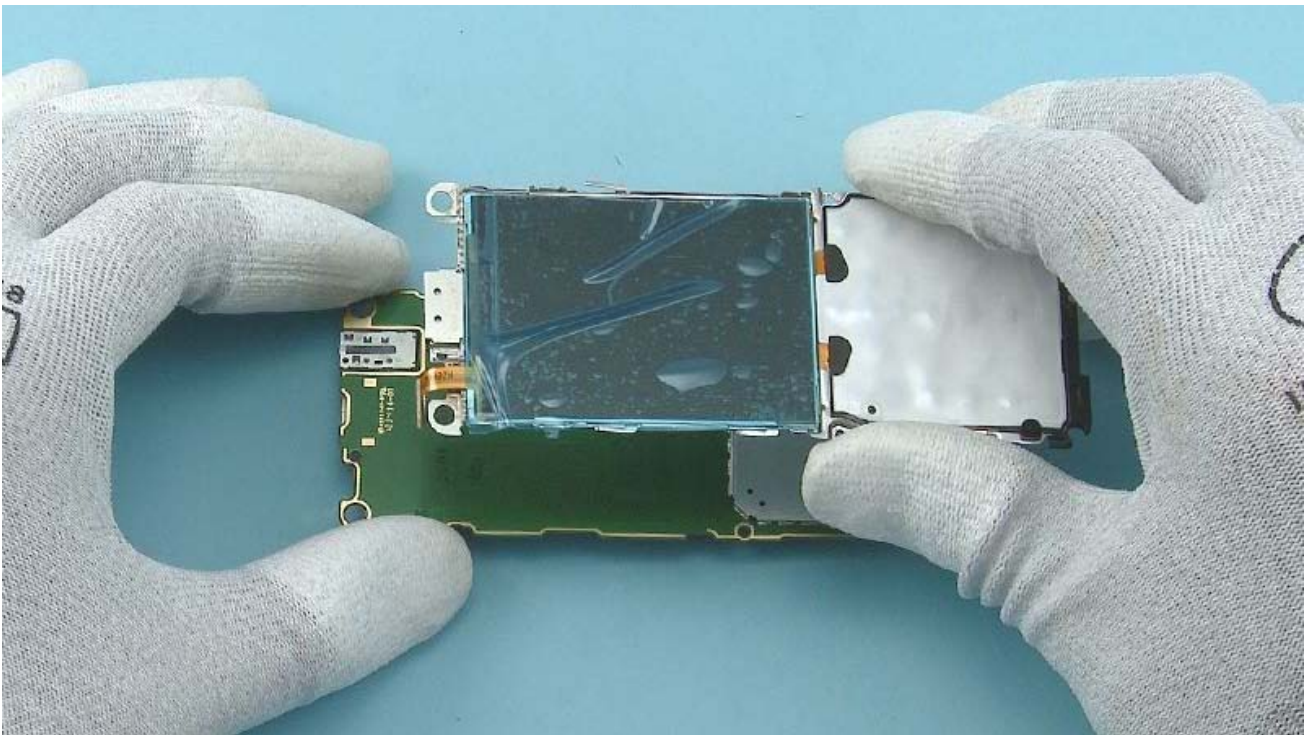
17) Open the DISPLAY connector with the SS-93. Be careful not to damage the connector or any components nearby.



18) Open the UI FLEX connector with the SS-93. Be careful not to damage the connector or any components nearby.



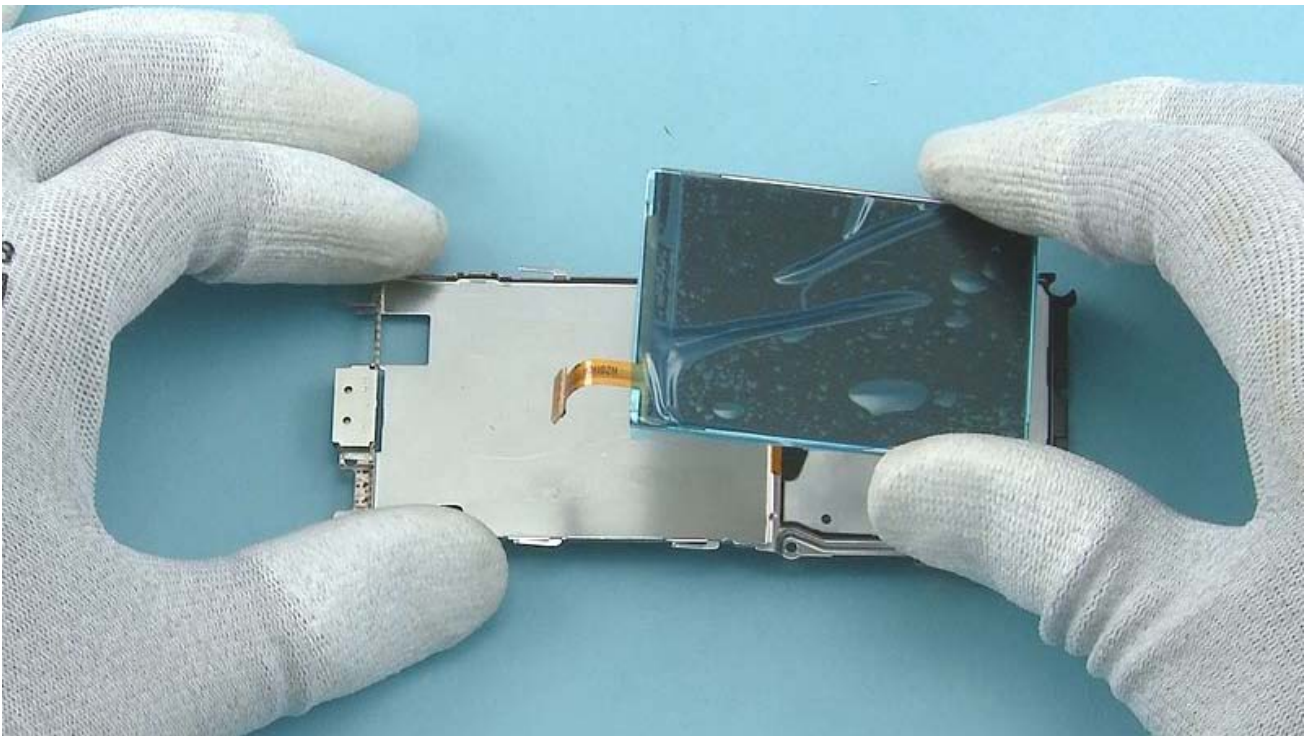
19) Use the SS-93 to release the two clips holding the UI SHIELDING on the ENGINE BOARD.



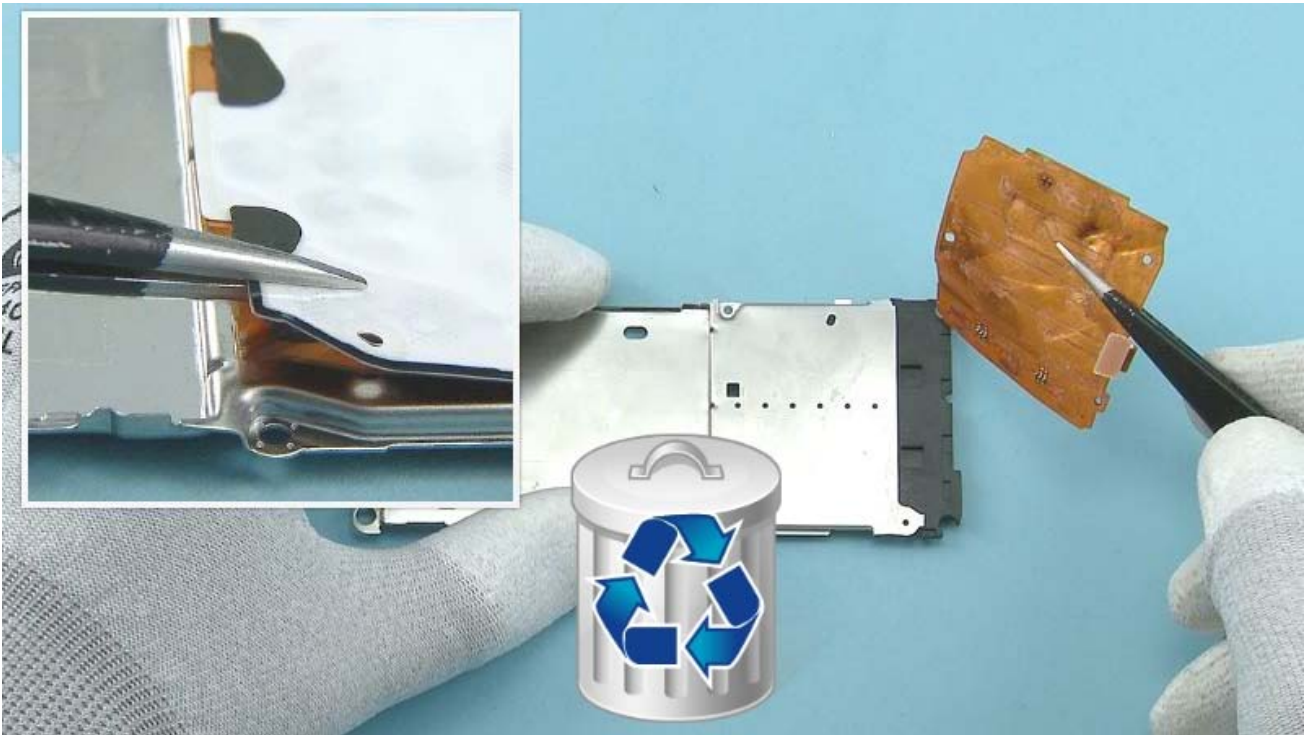
20) Separate the UI SHIELDING including the DISPLAY from the ENGINE BOARD.



21) Use the dental tool to carefully release the DISPLAY from the UI SHIELDING. Be careful not to injure yourself with the sharp end of the dental tool. Release the DISPLAY little by little to avoid breaking it.



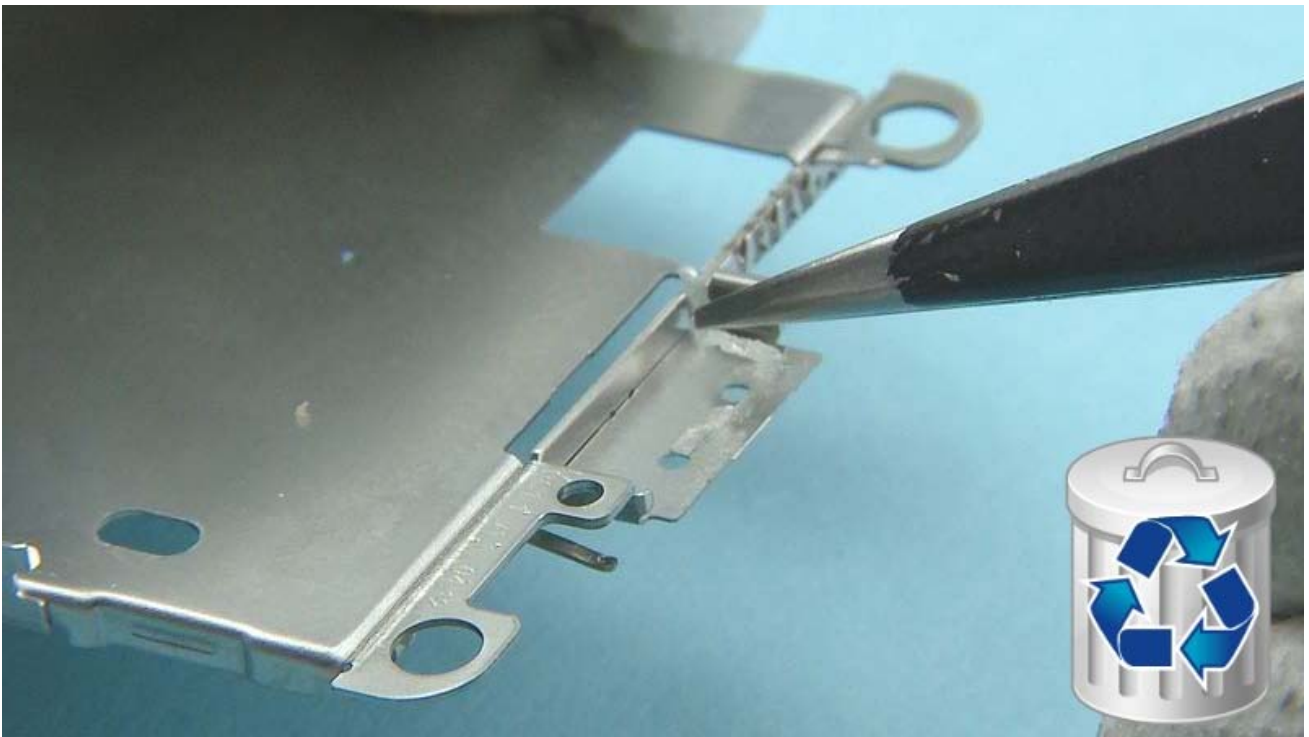
22) Remove the DISPLAY.



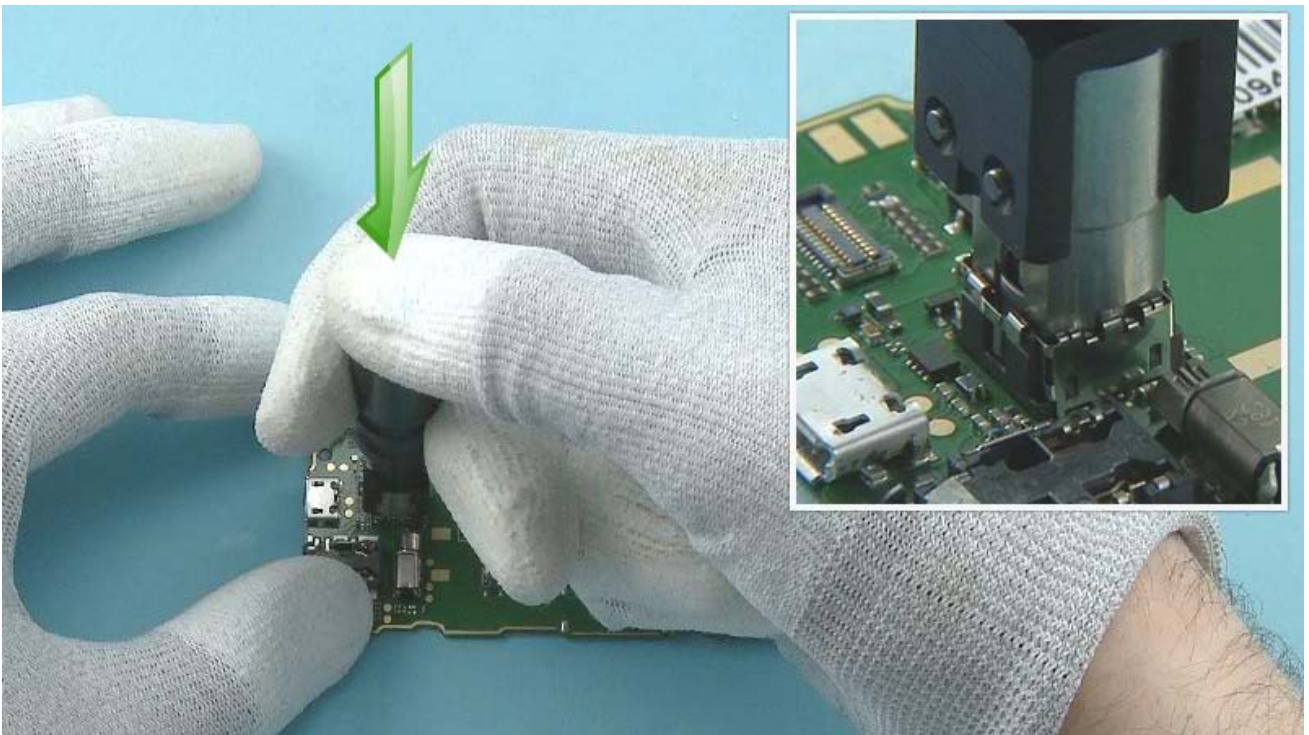
23) Peel off the UI FLEX with tweezers. Do not use it again. Discard it.



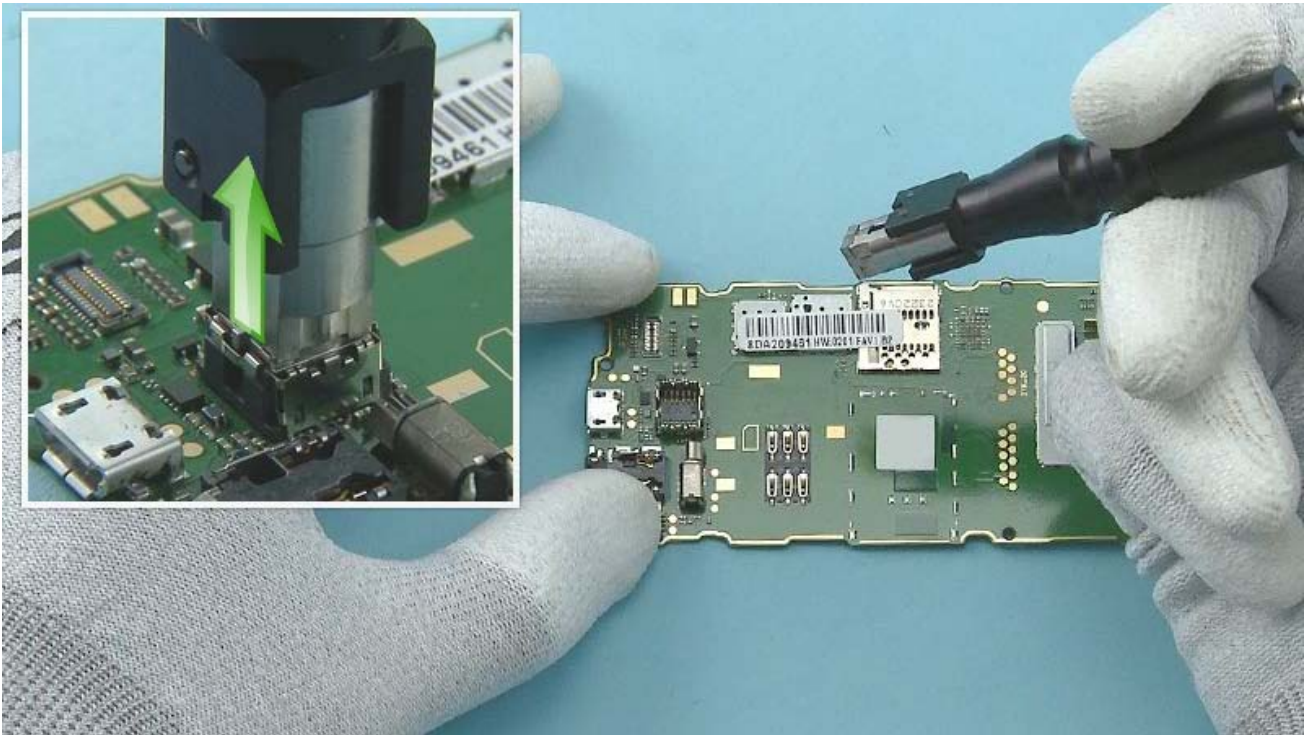
24) Release the EARPIECE with the SS-93 and remove it with tweezers. Do not use the EARPIECE again. Discard it.



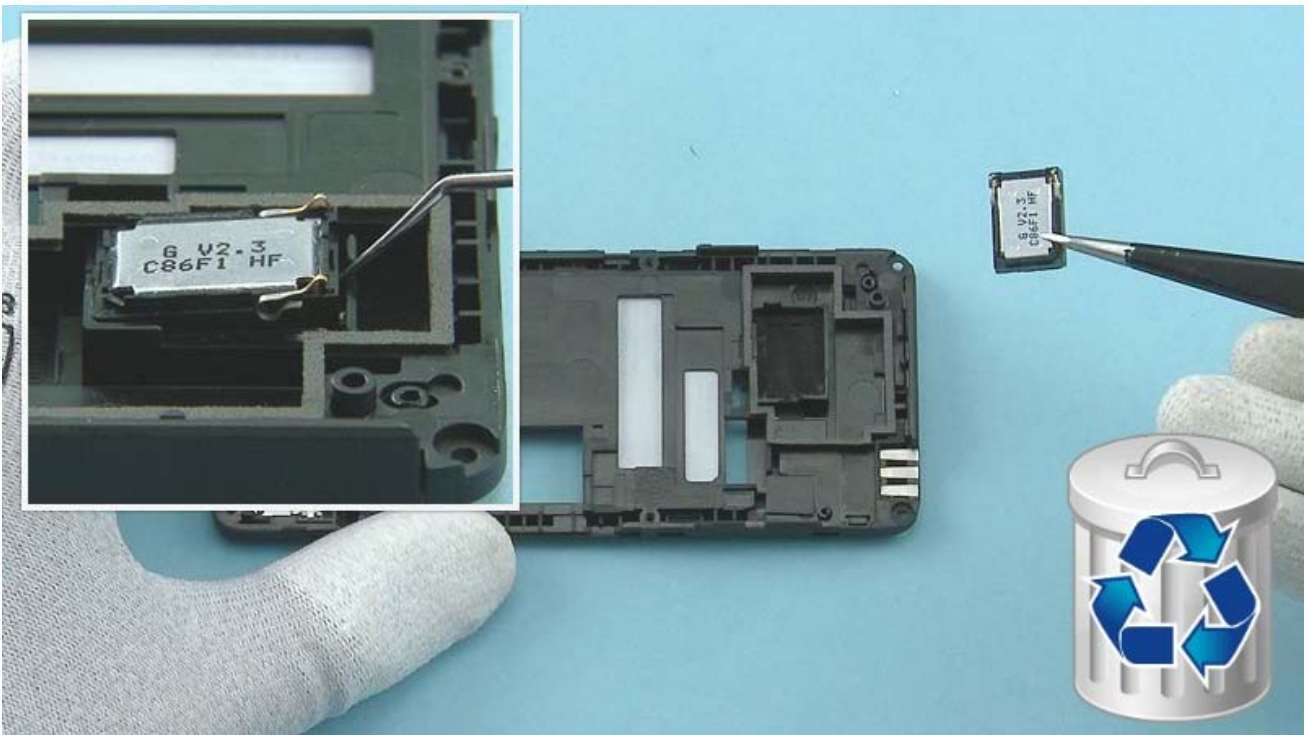
25) Peel off and discard any EARPIECE ADHESIVE remains from the UI SHIELDING.



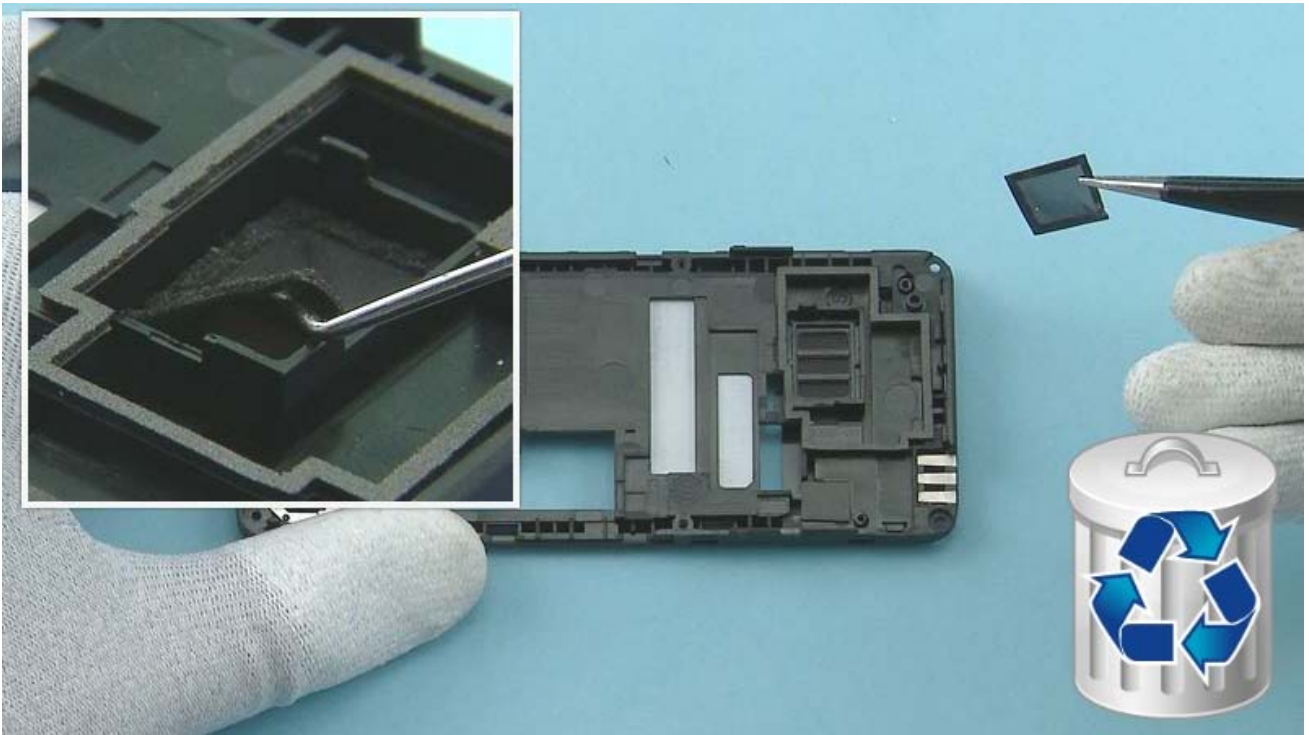
26) Insert the camera removal tool SS-276 to the CAMERA socket and press and hold down the button on top of the SS-276.



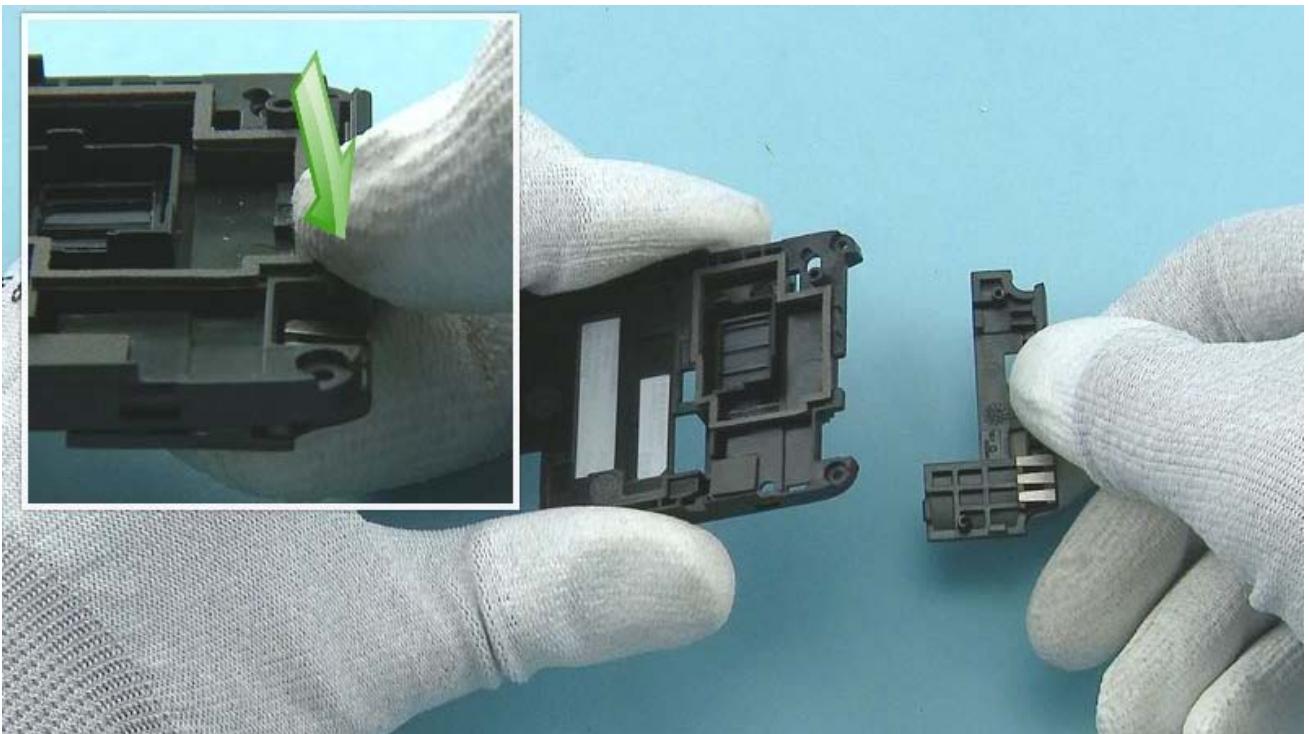
27) Pull up to remove the CAMERA.



28) Release the IHF SPEAKER with the dental tool and remove it with tweezers. Do not use it again. Discard it.



29) Release the SPEAKER GASKET with the dental tool and remove it with tweezers. Do not use it again. Discard it.

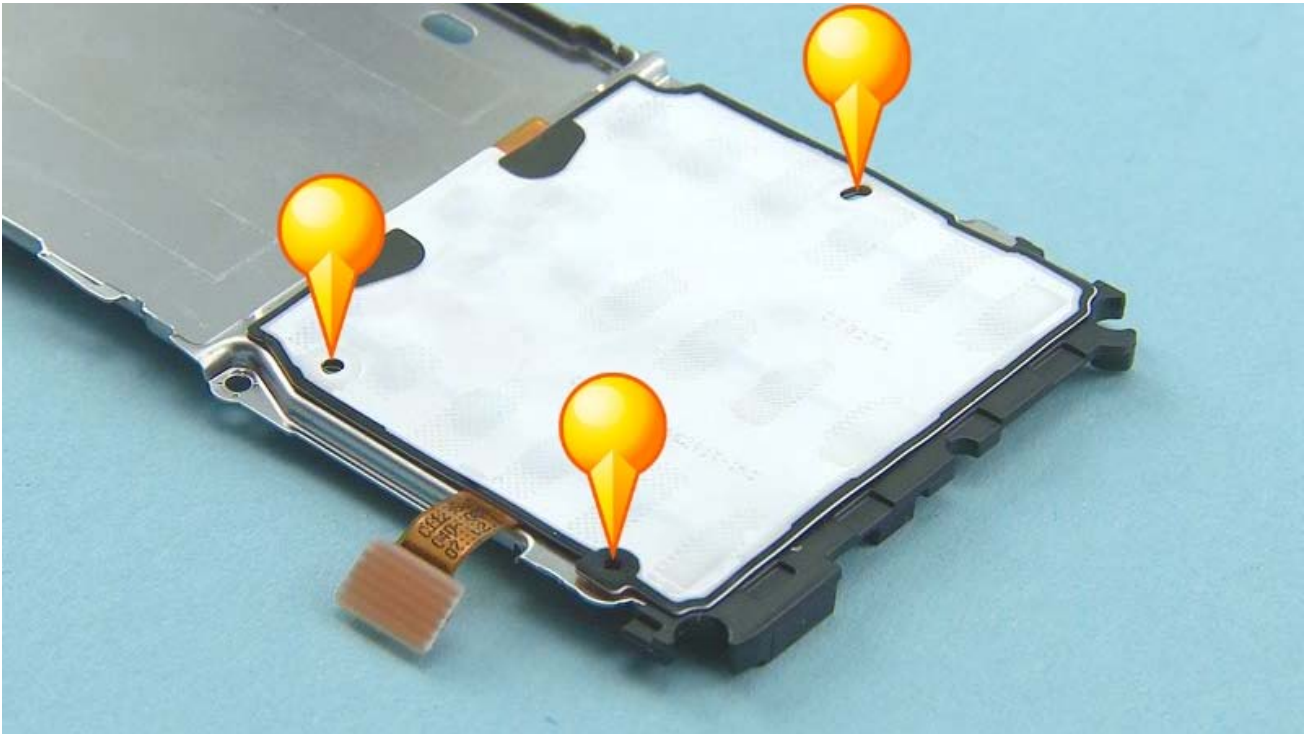


30) Push down to remove the ANTENNA MODULE from the D-COVER.

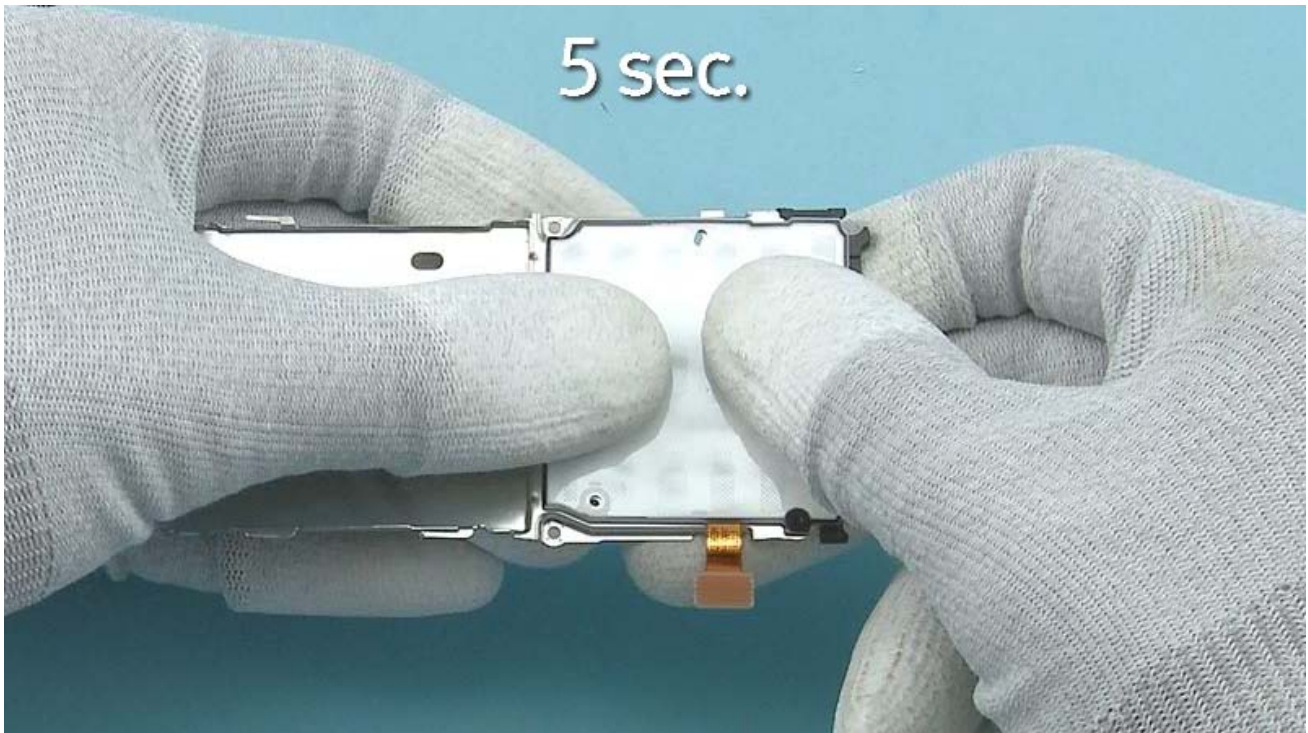


31) The Nokia 301 disassembly procedure is complete.

-END OF DISASSEMBLY-



1) When assembling the UI FLEX, first remove the adhesive foil and place the UI FLEX on the UI SHIELDING. Use the shown guiding holes to get the right alignment.



2) Press the UI FLEX for five seconds to activate the adhesive.



3) Fasten the two Torx+ size 4 screws in the order shown to the torque of 15 Ncm.

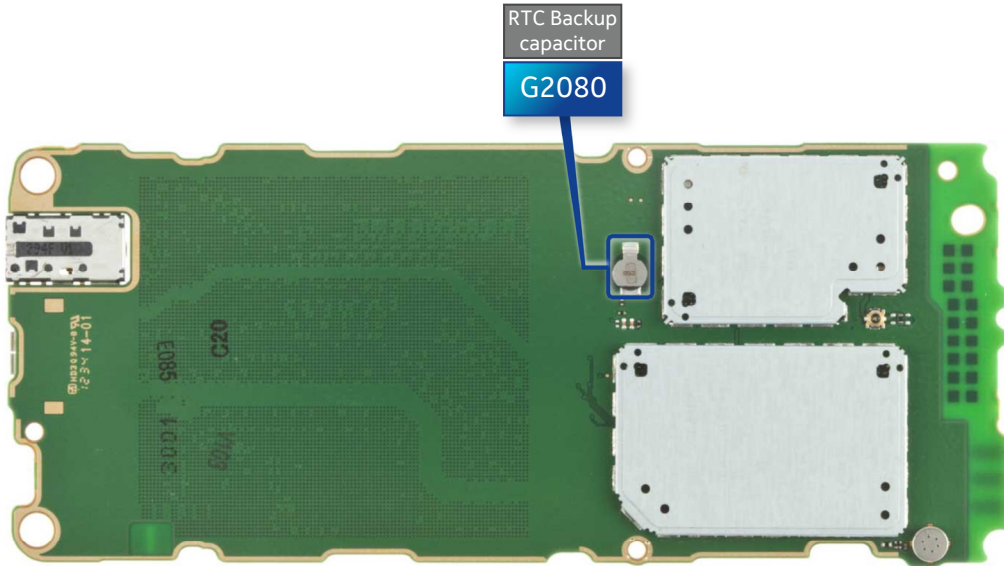


4) Fasten the four Torx+ size 4 screws in the order shown to the torque of 15 Ncm.

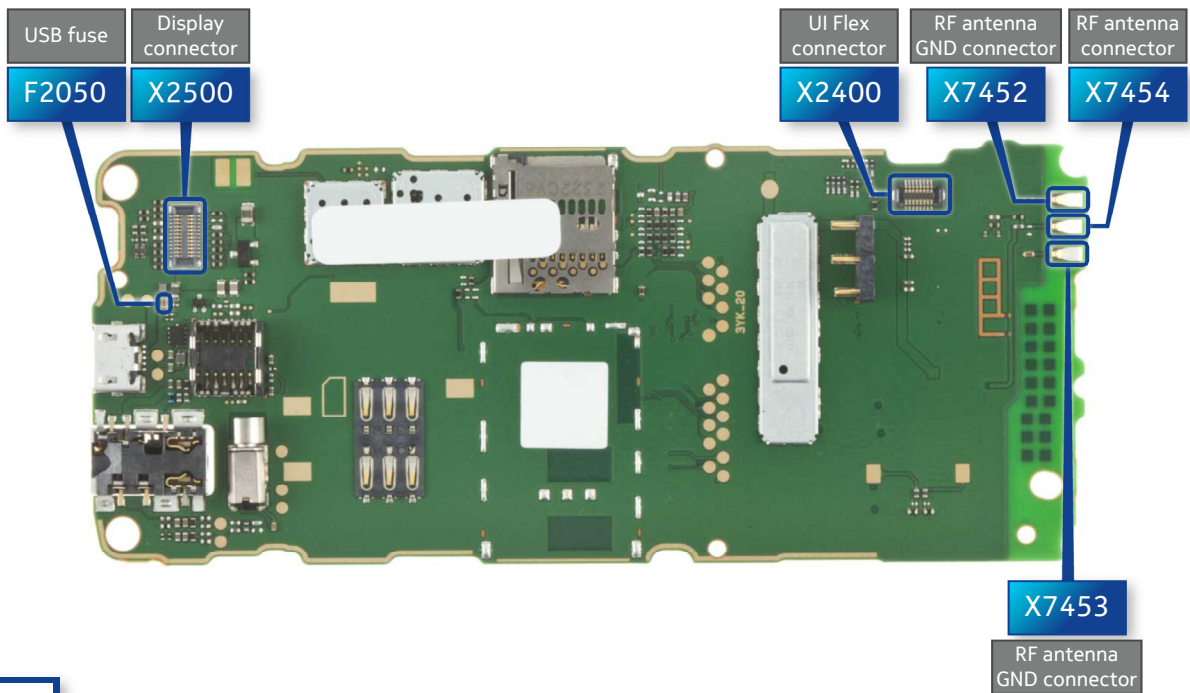
Nokia 301

RM-840, RM-841

TOP



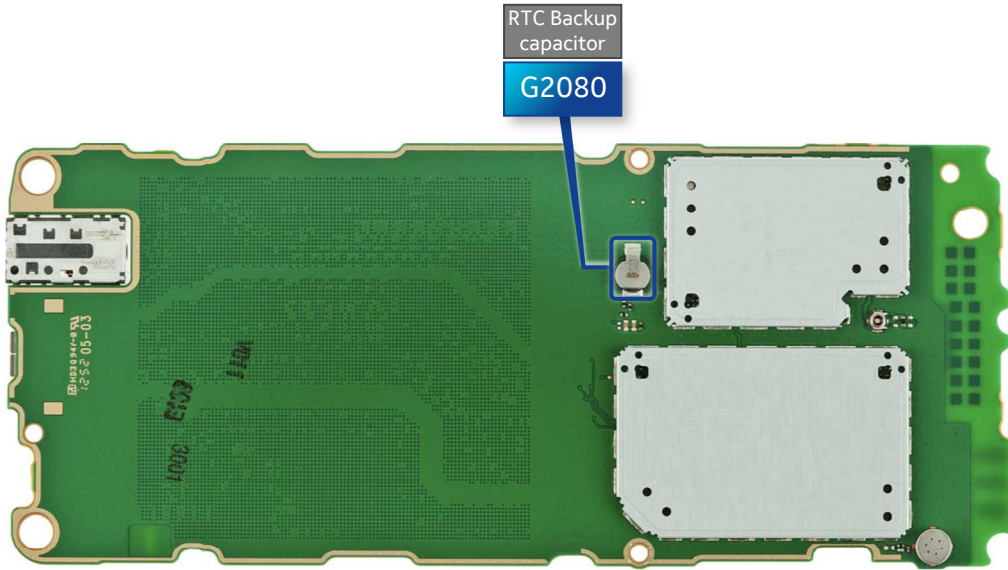
BOTTOM



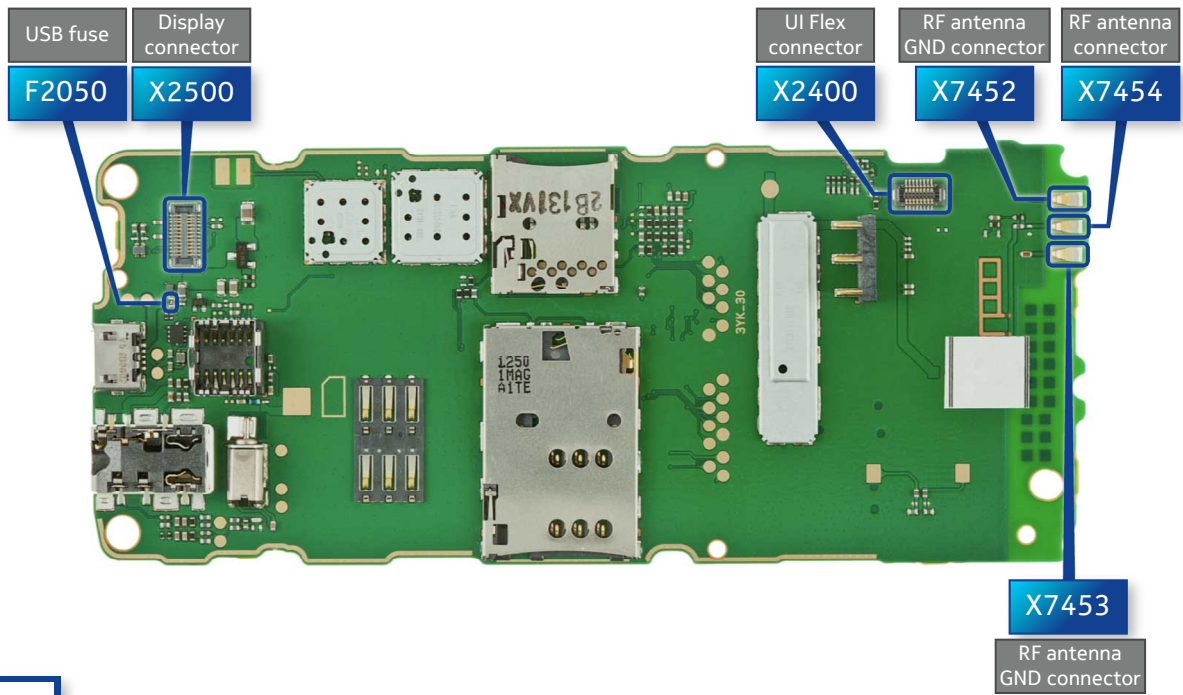
Nokia 301 Dual SIM

RM-839

TOP



BOTTOM



v1.0



CA-101 Service cable



AC-20 Travel charger



SS-276 Camera removal tool



Nokia Standard Toolkit (v2)

For more information, refer to the Service Bulletin (SB-011) on Nokia Online. Supplier or manufacturer contacts for tool re-order can be found in "Recommended service equipment" document on Nokia Online.

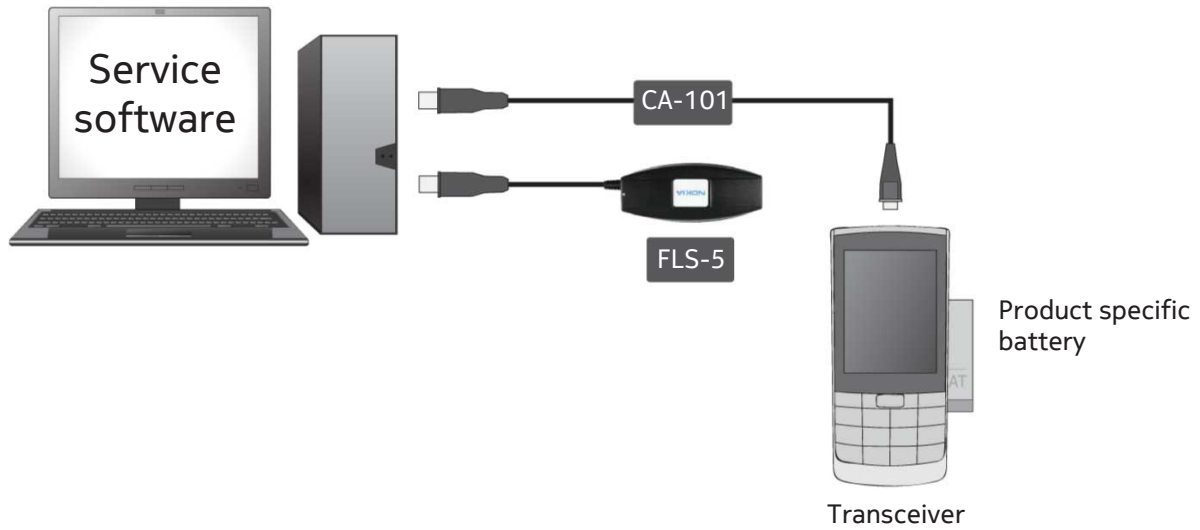


- 1 — Battery cover release notch
- 2 — Micro-USB connector
- 3 — 3.5 mm headset connector
- 4 — Earpiece
- 5 — Display
- 6 — Scroll key
- 7 — Left selection key
- 8 — Right selection key
- 9 — Call key
- 10 — End/Power key
- 11 — Microphone
- 12 — Camera
- 13 — MicroSD card slot
- 14 — SIM2 slot (Only in Dual SIM)
- 15 — Loudspeaker
- 16 — Cellular antenna



v1.0

Flashing concept



Version	Date	Description
1.0	25.03.2013	First published version

www.s-manuals.com