

Service Manual for L1 and L2

Nokia Asha 308 (RM-838 / RM-852) Dual-SIM

Nokia Asha 309 (RM-843 / RM-844) Single-SIM

Nokia Asha 310 (In China, Nokia Asha 3100) (RM-911) Dual-SIM Wi-Fi

Key features

- S40 operating system with Full Touch UI
- Dual SIM (Nokia Asha 308, Nokia Asha 310, Nokia 3100) Wi-Fi (Nokia Asha 309, Nokia Asha 310, Nokia 3100)
- Capacitive touch screen
- EA Games Gift (40 free games)

Version 2.0

Check the repair policy before performing any mechanical repair on Service Level 1&2!

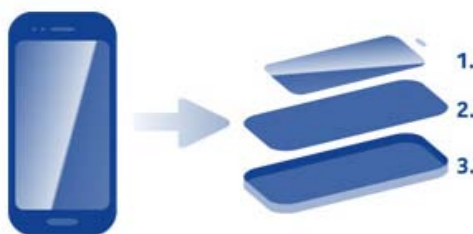


Exploded view



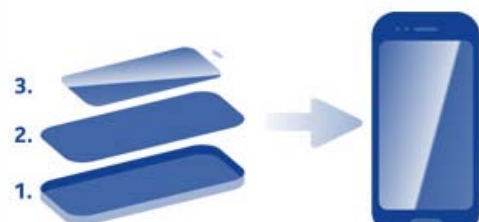
More >

Disassembly steps



More >

Assembly hints



More >

Service devices



More >

Product controls and interfaces



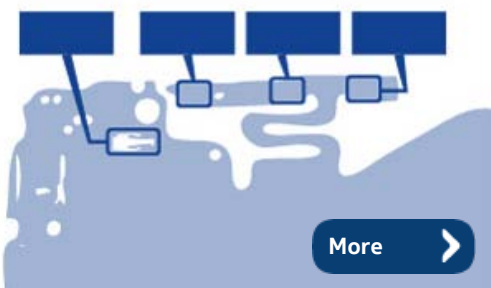
More >

Service concept



More >

Solder components



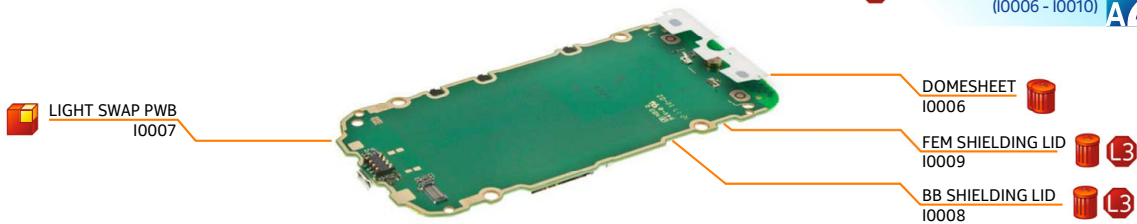
More >

Version	Date	Description
1.0	25.09.2012	First published version
2.0	18.02.2013	Added Nokia Asha 310/3100 (RM-911) Dual-SIM Wi-Fi information, Updated Solder components page

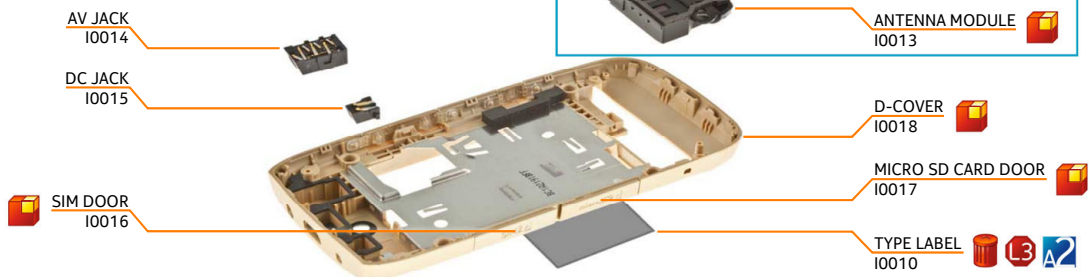
A1 A-COVER ASSEMBLY
(10001 - 10003)



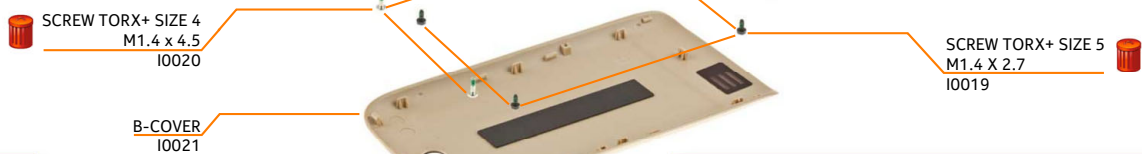
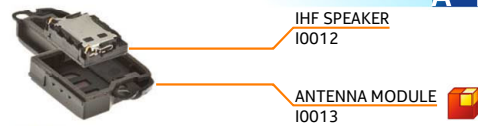
L3 LIGHT SWAP PACKAGE
(10006 - 10010) **A2**



A3 D-COVER ASSEMBLY **L3**
(10012 - 10018)



A4 ANTENNA MODULE ASSEMBLY
(10012, 10013)



v1.0

Only available as assembly

Not reusable after removal

L3 Repair/swap only in level 3

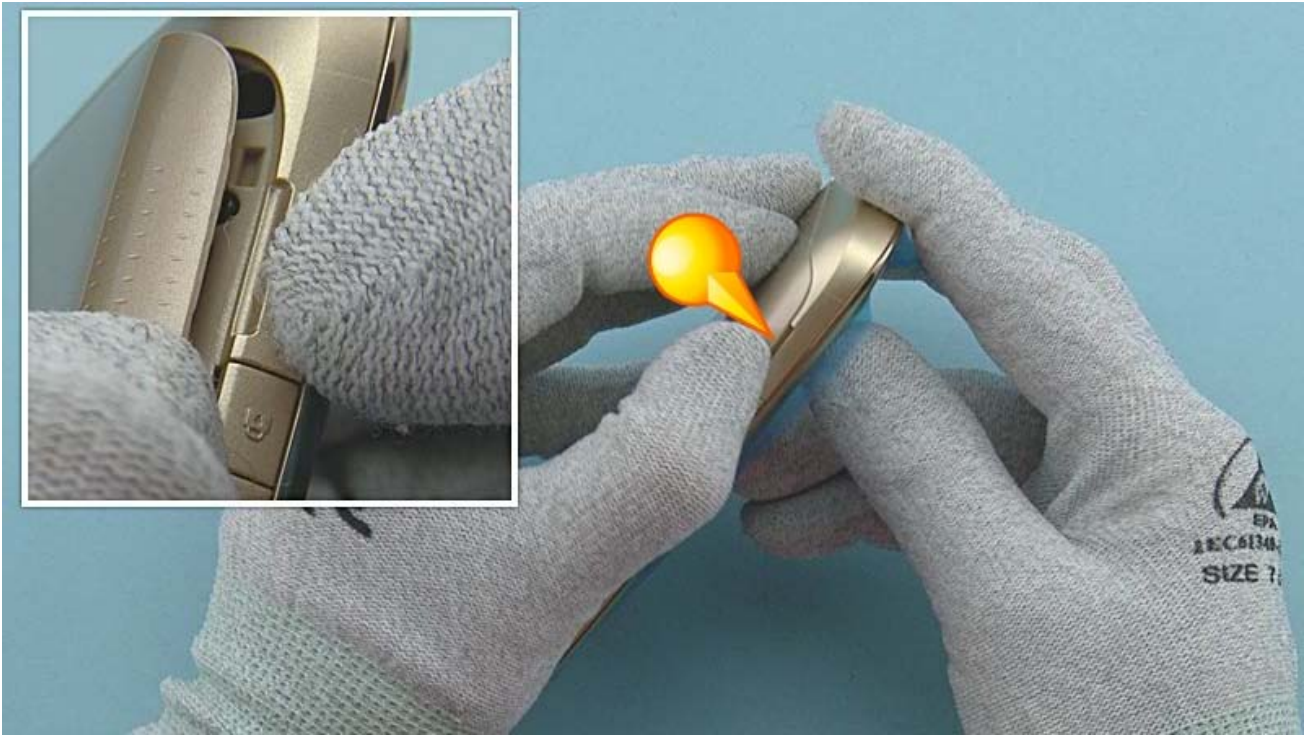


For disassembling you need the Nokia Standard toolkit version 2. You will also need a DC plug, an AV plug and the camera removal tool SS-276.

Note that the disassembly instructions are made with the Dual SIM variant (Nokia Asha 308, RM-838 and RM-852).



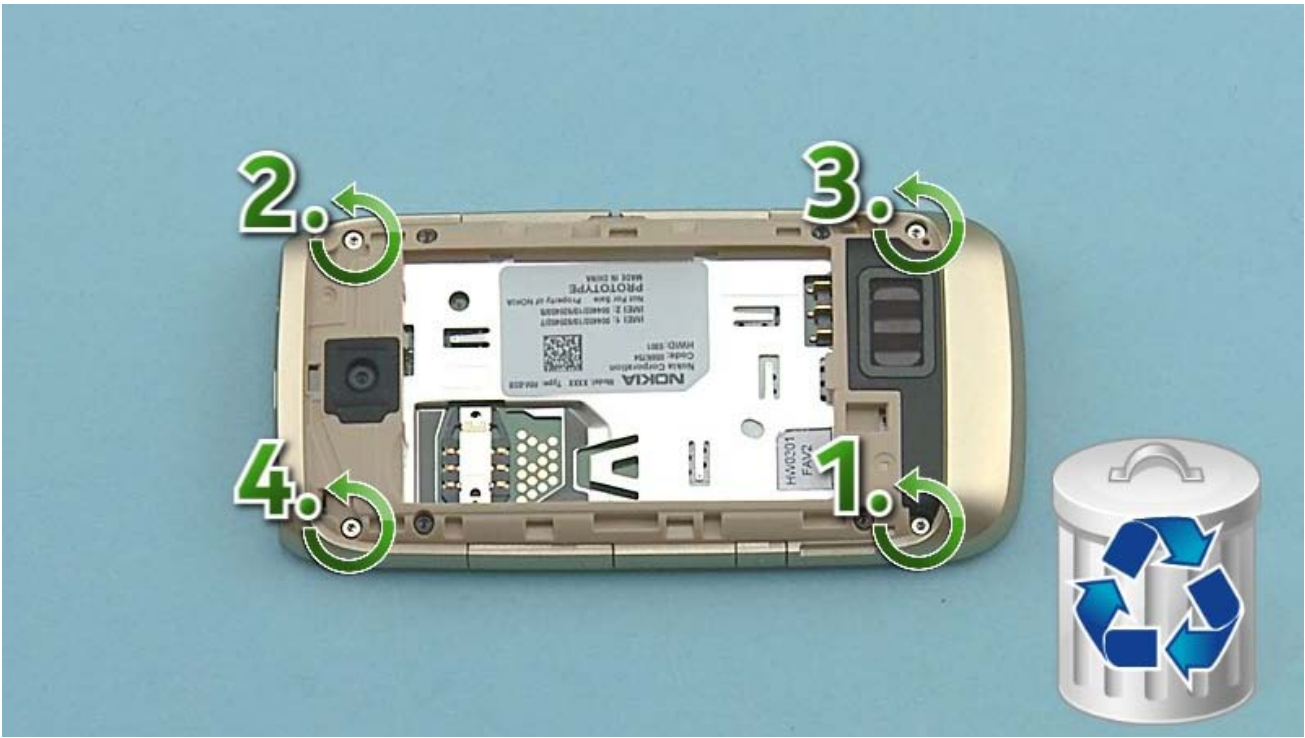
Protect the TOUCH WINDOW with protective film.



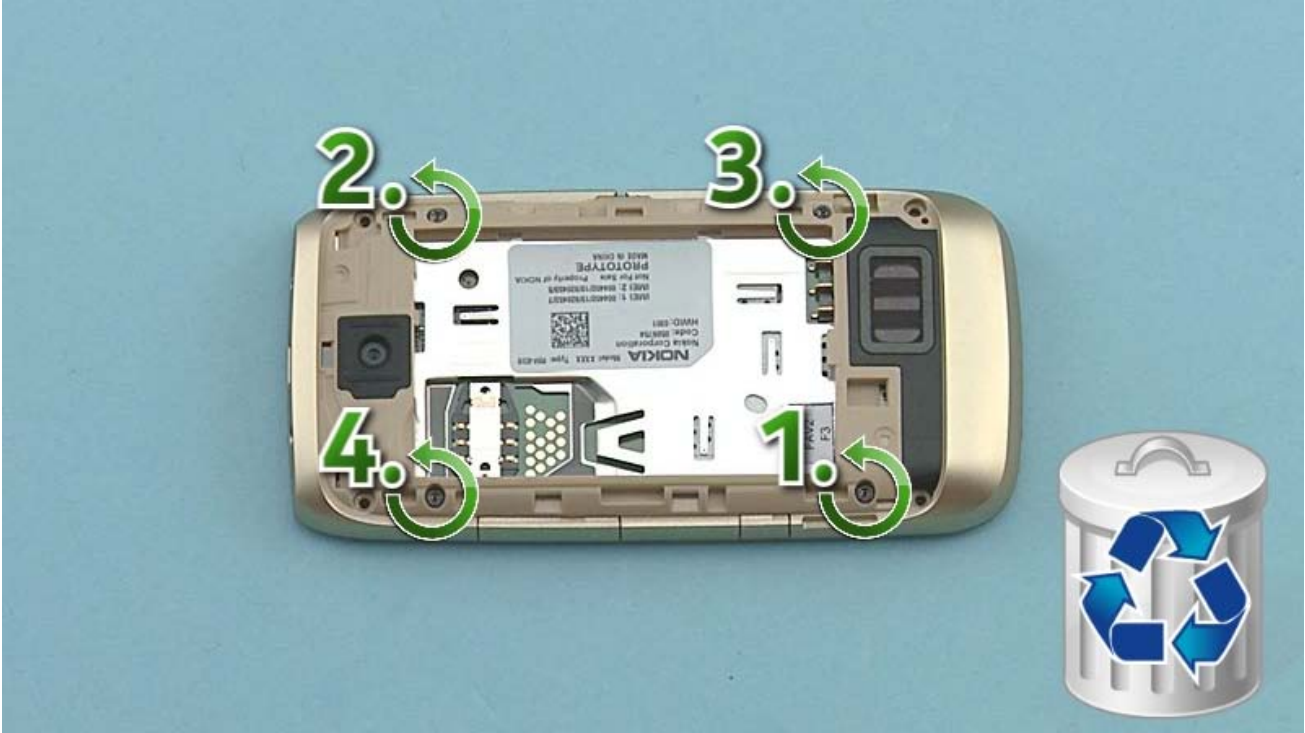
Use the opening notch to release the BATTERY COVER.



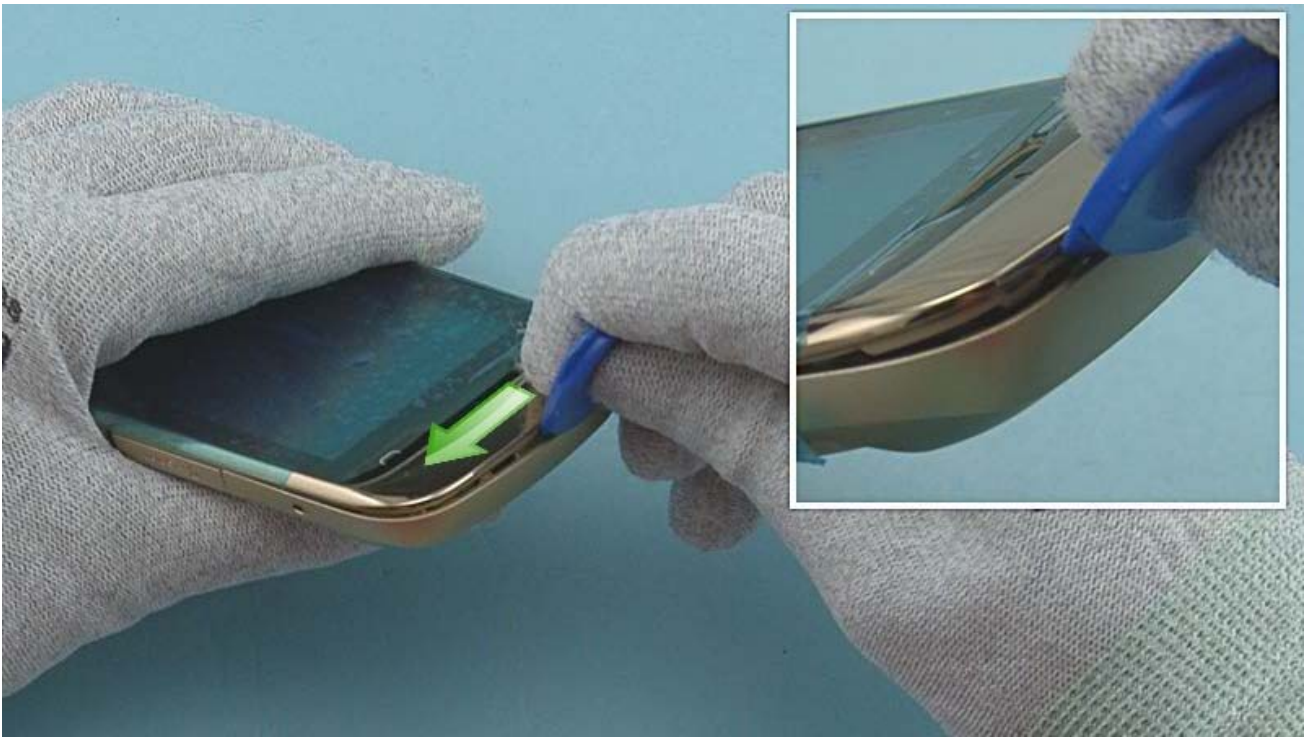
Remove the BATTERY COVER.



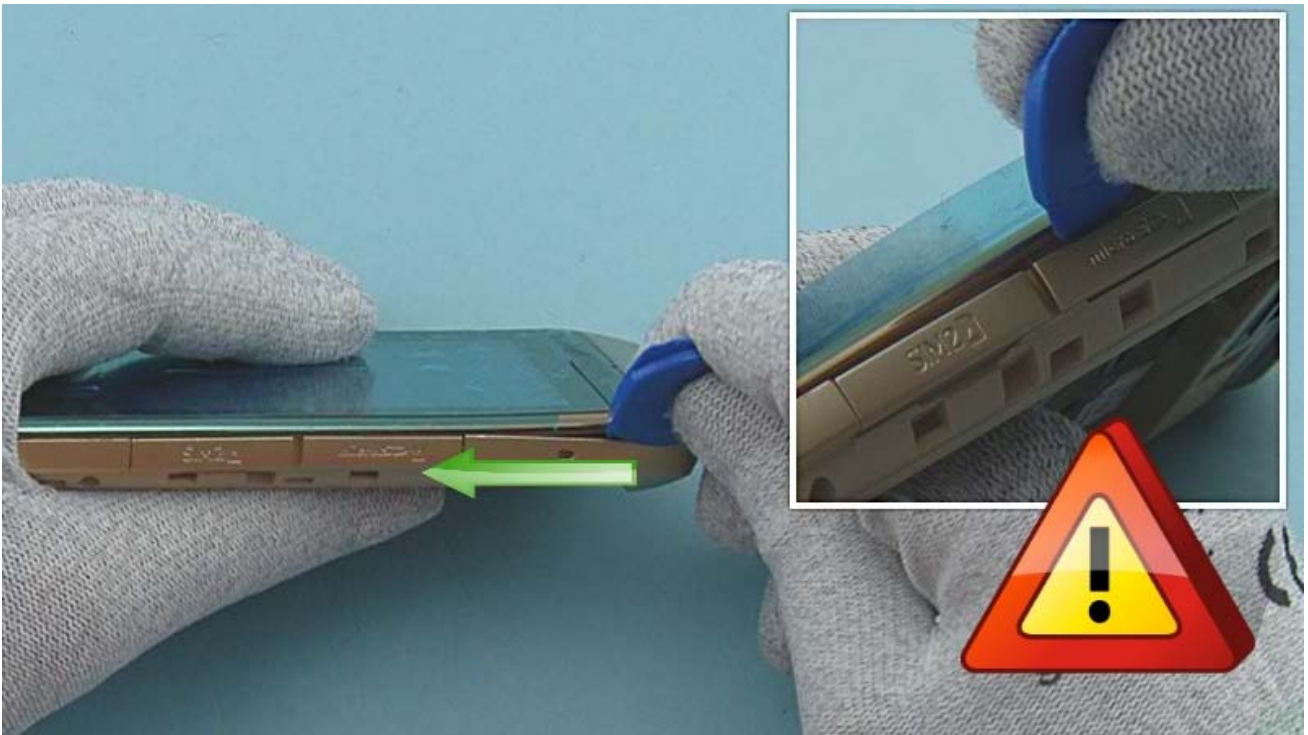
Unscrew the four Torx+ size 4 screws in the order shown. Do not use them again. Discard them.



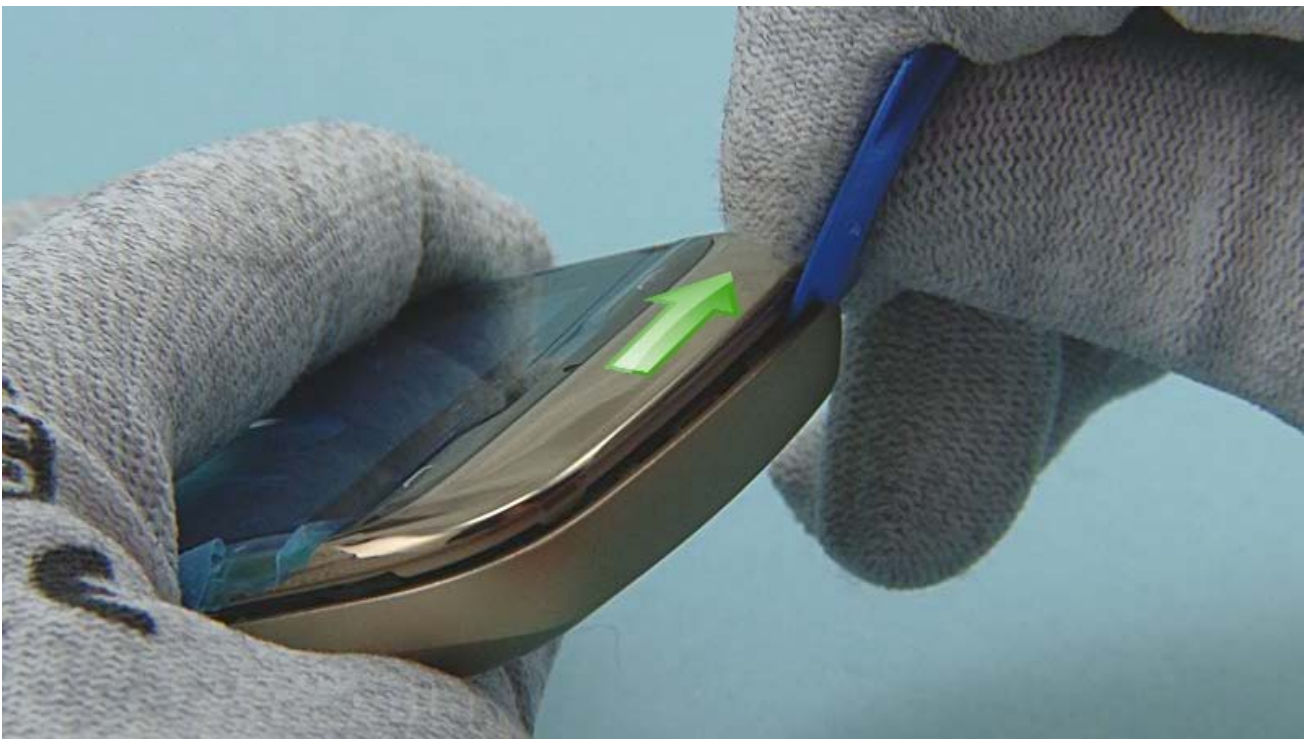
Unscrew the four Torx+ size 5 screws in the order shown. Do not use them again. Discard them.



To detach the A-COVER, first release the left side of the bottom end of the A-COVER with the SRT-6.



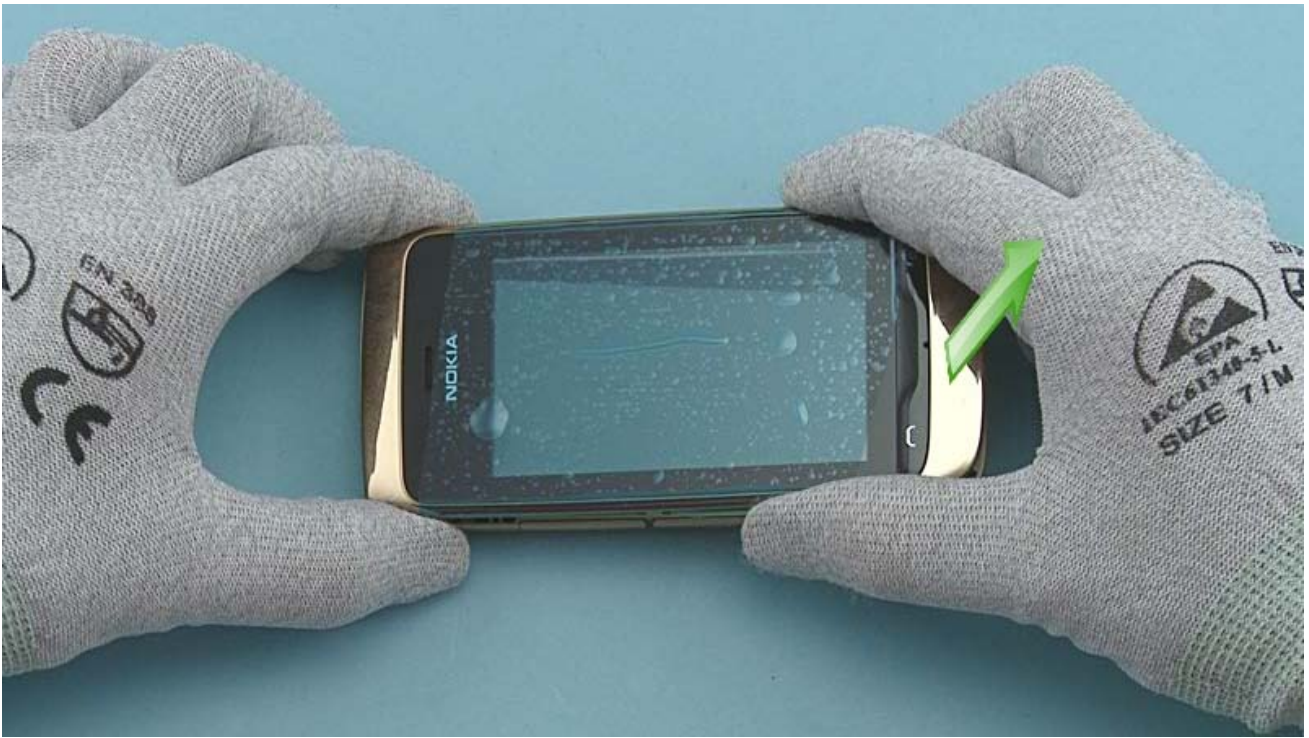
Continue to release the A-COVER with the SRT-6 on the SIM and SD CARD DOOR side. Be careful not to damage the SIM or SD CARD DOOR while releasing the A-COVER.



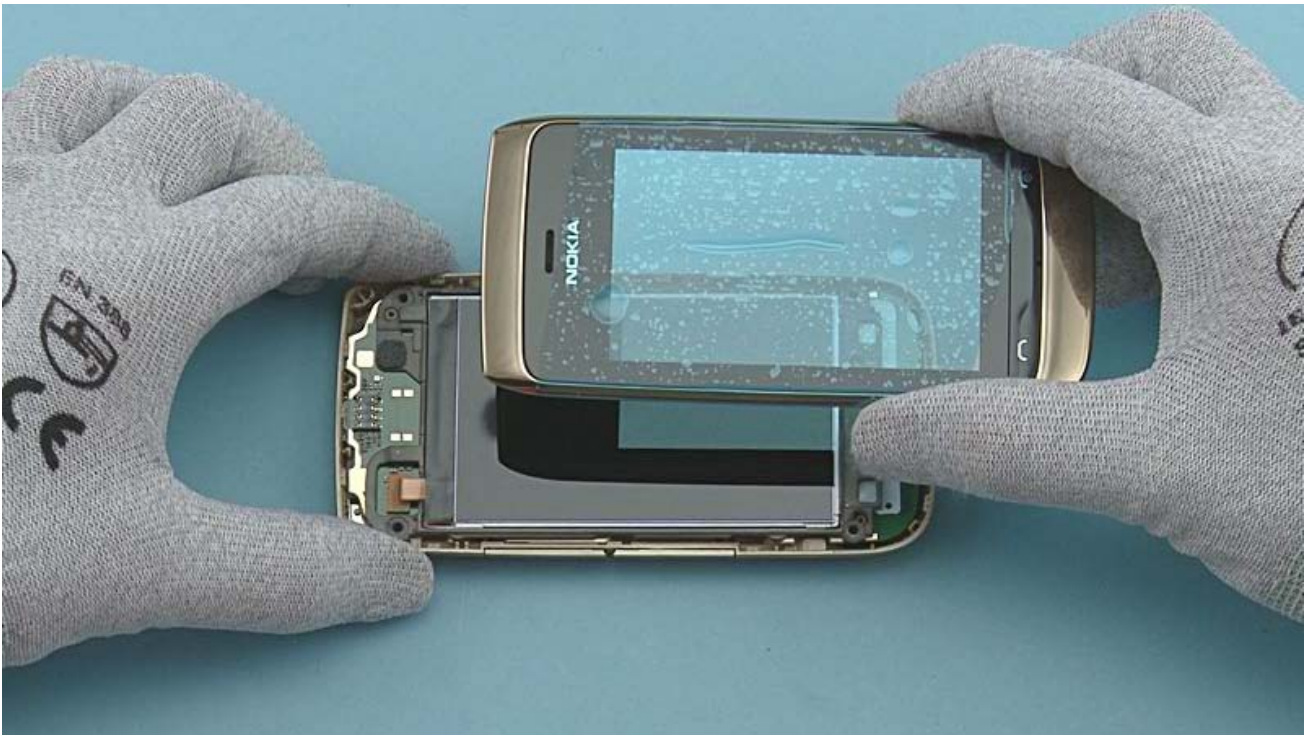
Release the right side of the bottom end of the A-COVER with the SRT-6.



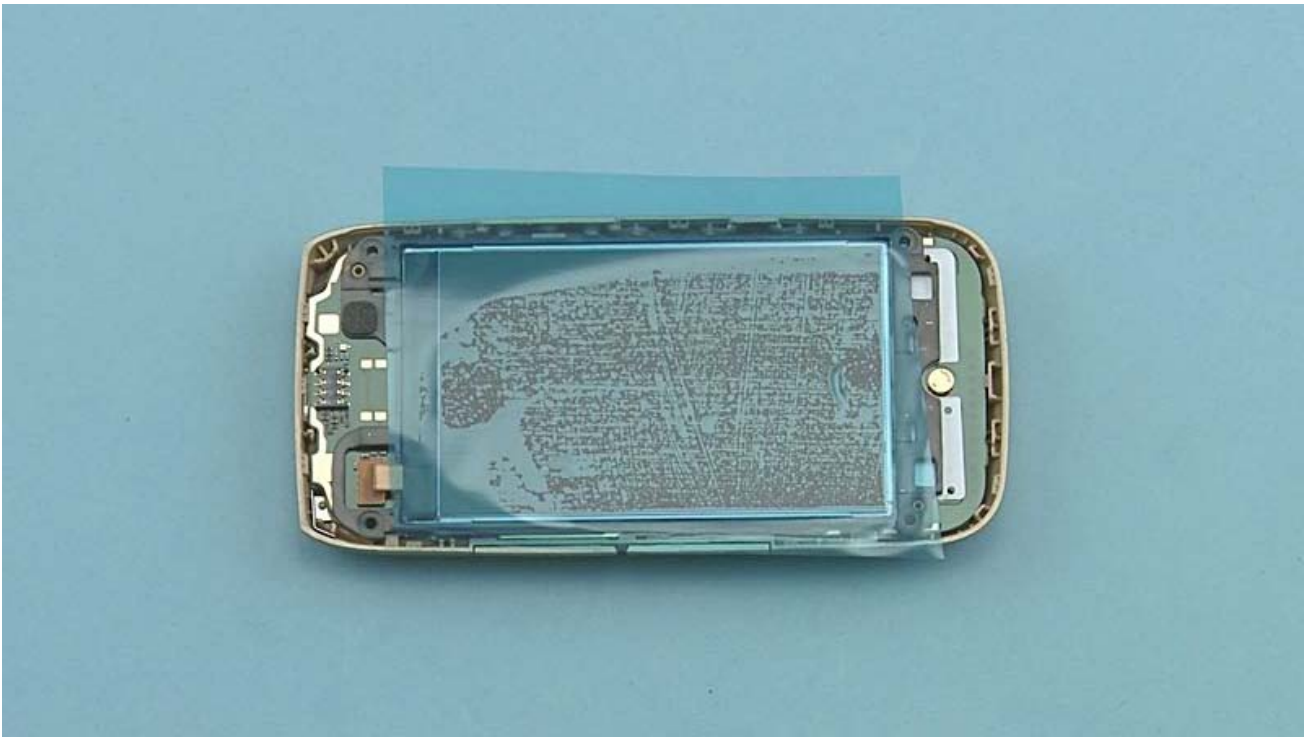
Release also the LOCK KEY side with the SRT-6. Be careful not to damage the LOCK or VOLUME KEYS while releasing the A-COVER.



To remove the A-COVER, first lift up the bottom end and then release the top end.



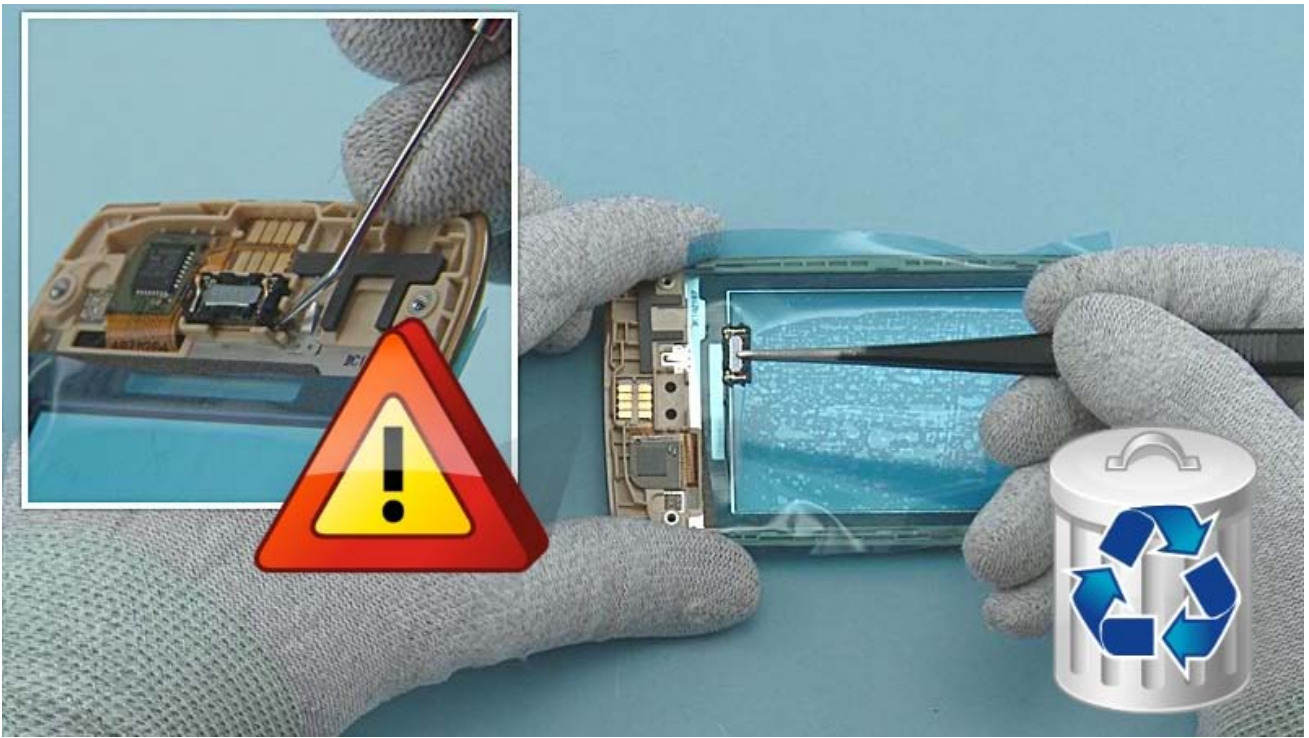
Remove the A-COVER.



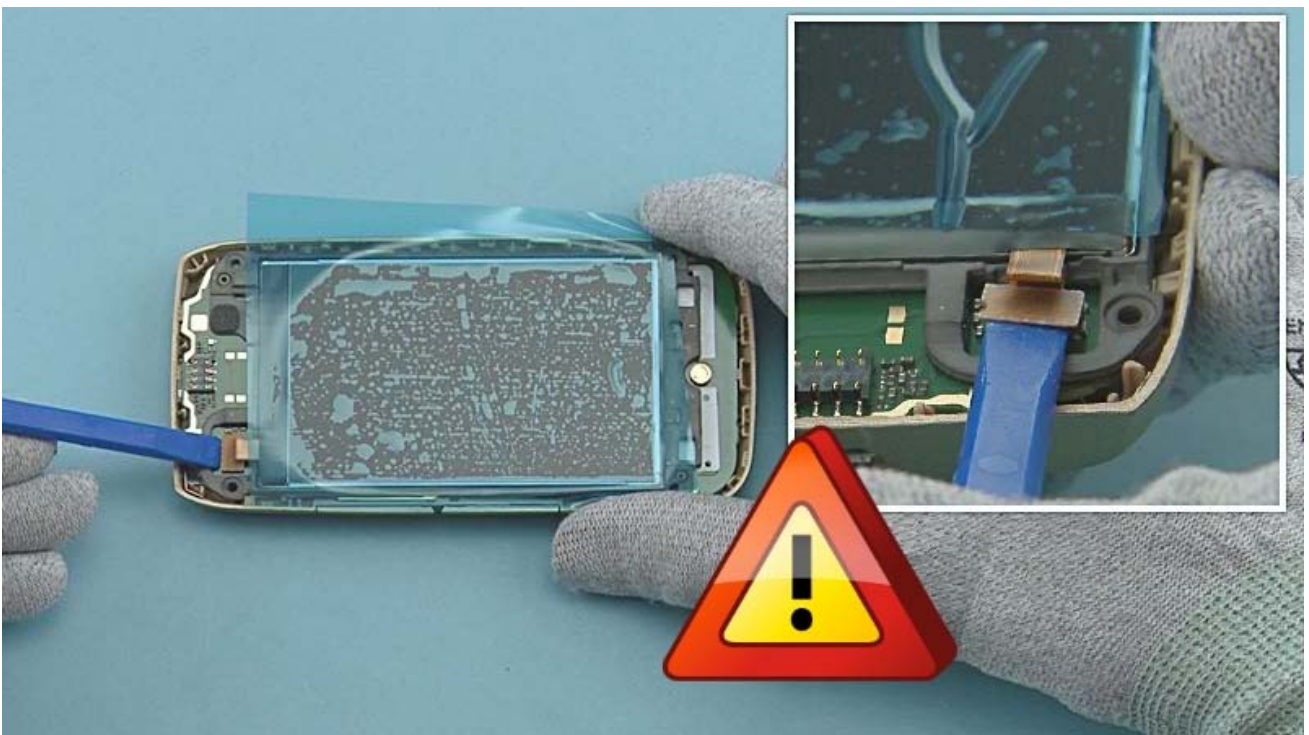
Protect the DISPLAY with protective film.



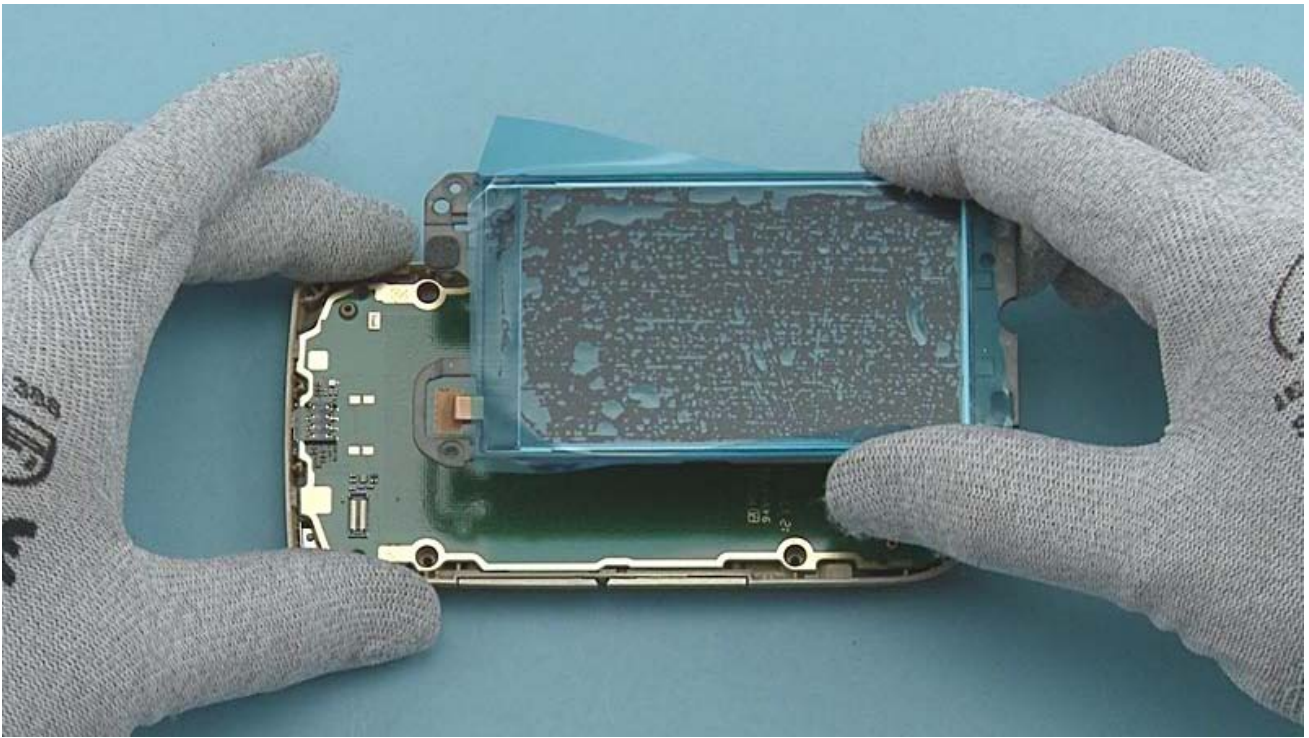
Protect the inner side of the TOUCH WINDOW with protective film.



Use the dental tool to release the EARPIECE. Remove the EARPIECE with tweezers. Do not use it again. Discard it. Be careful not to injure yourself with the sharp end of the dental tool.



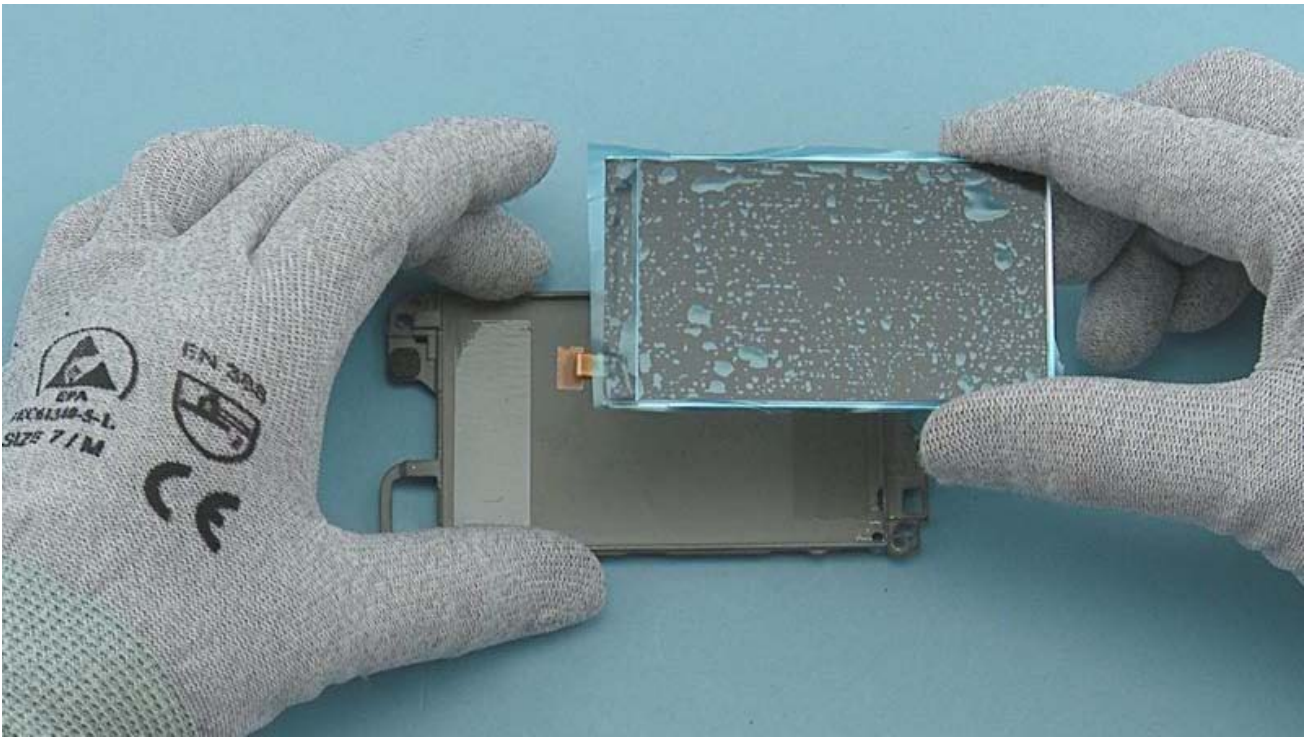
Disconnect the DISPLAY CONNECTOR with the SS-93. Be careful not to damage the connector or any components nearby.



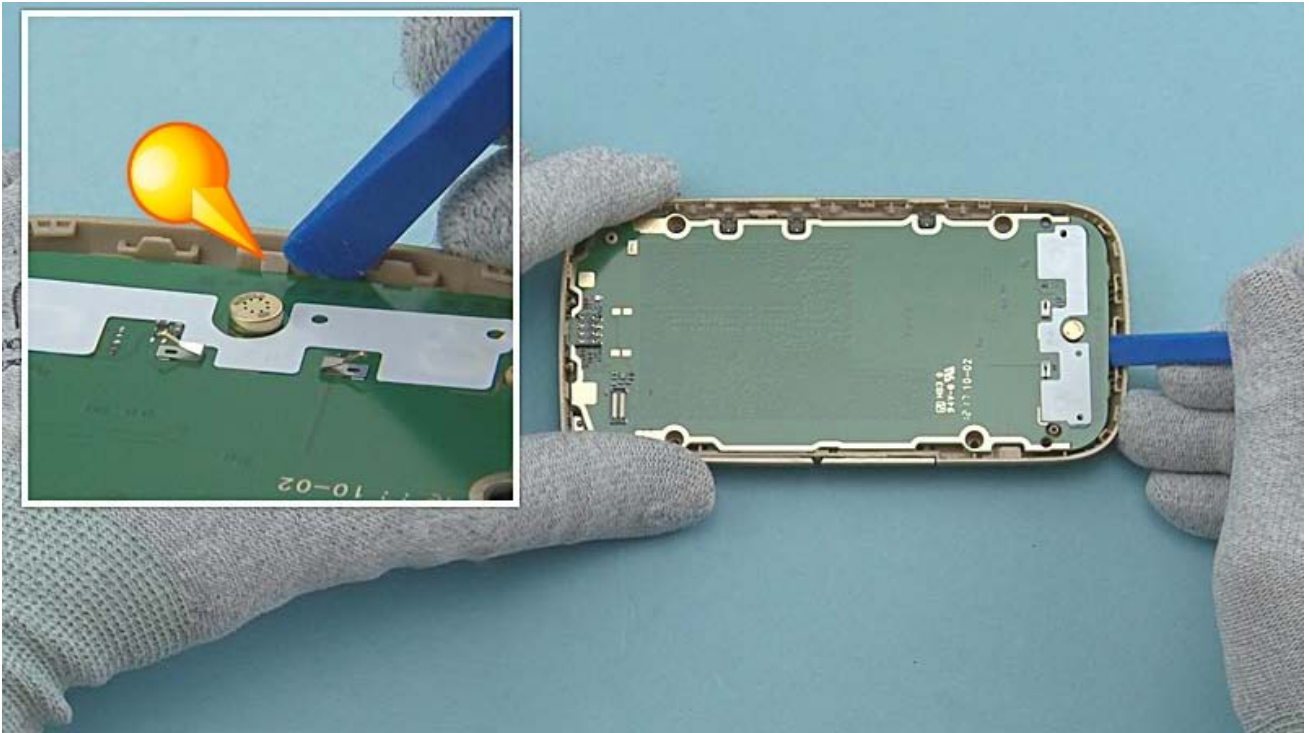
Remove the UI FRAME including the DISPLAY.



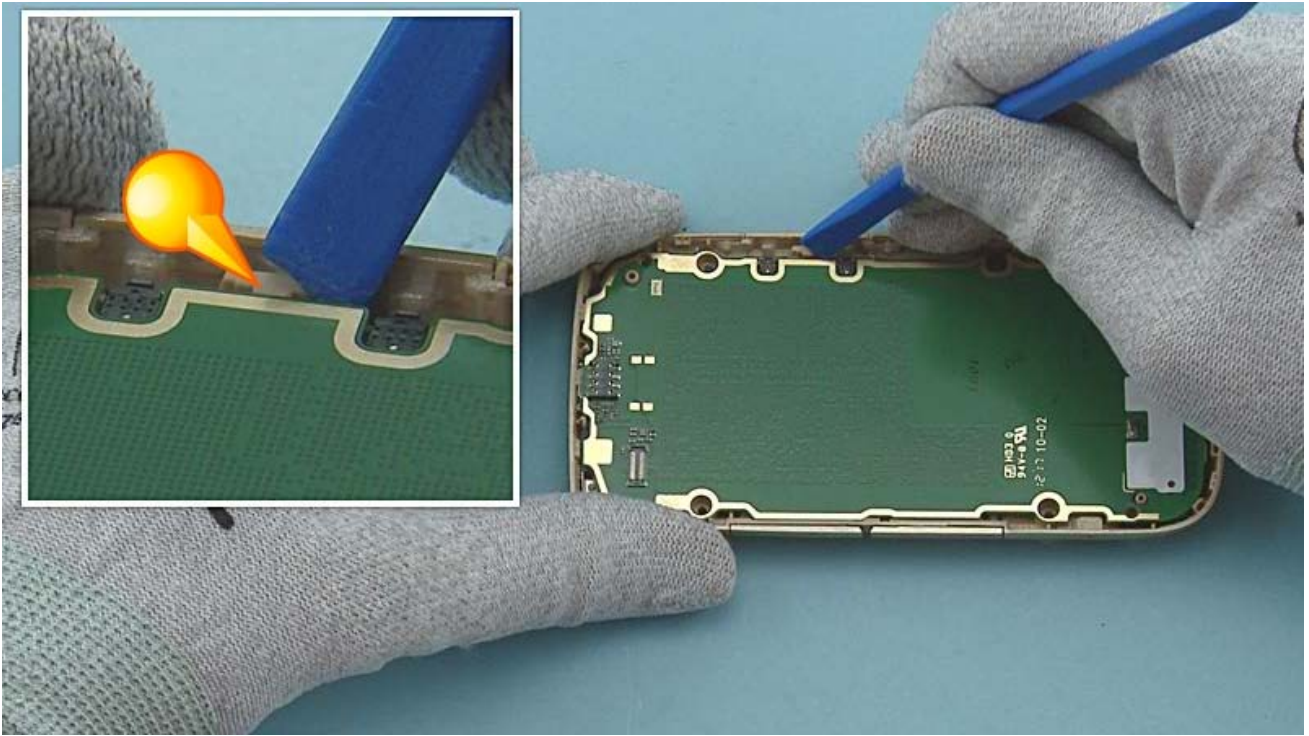
Detach the DISPLAY from the UI FRAME with the dental tool. Be careful not to damage the DISPLAY or the UI FRAME.



Separate the DISPLAY and the UI FRAME.



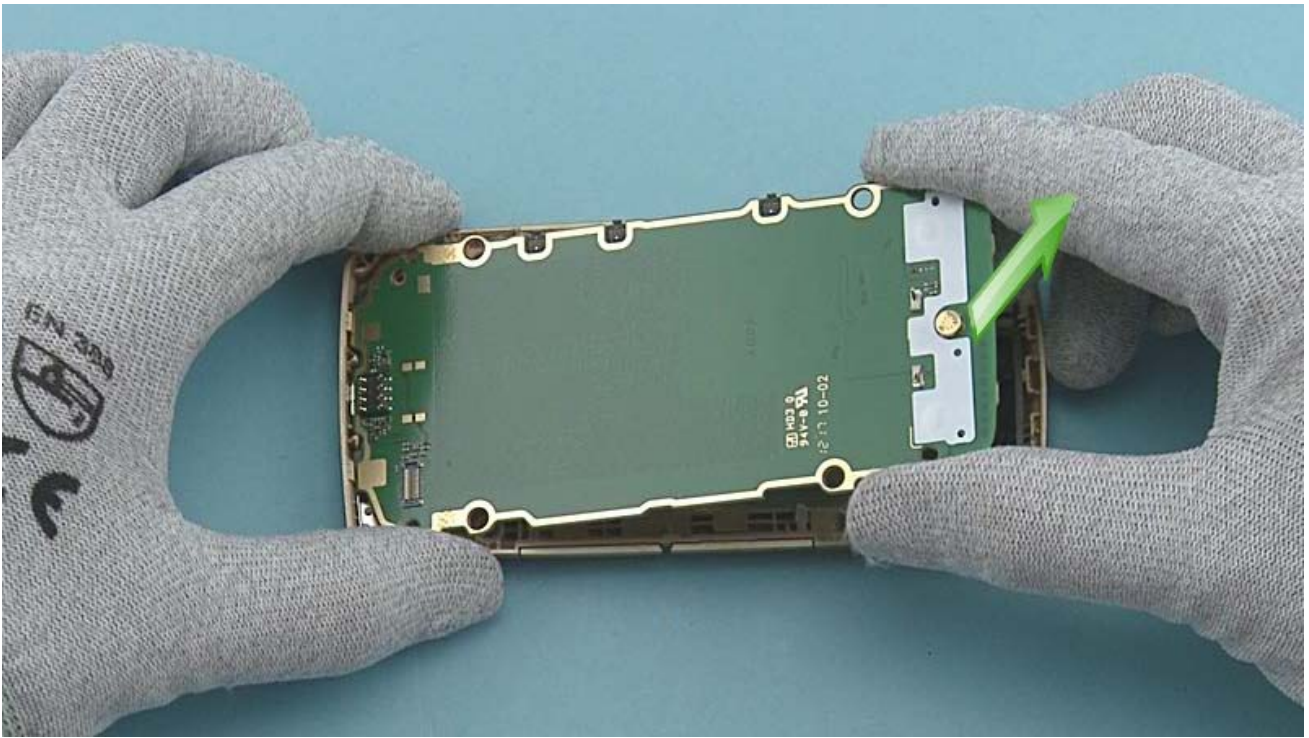
Use the SS-93 to release the clip holding the ENGINE BOARD on the bottom end of the D-COVER.



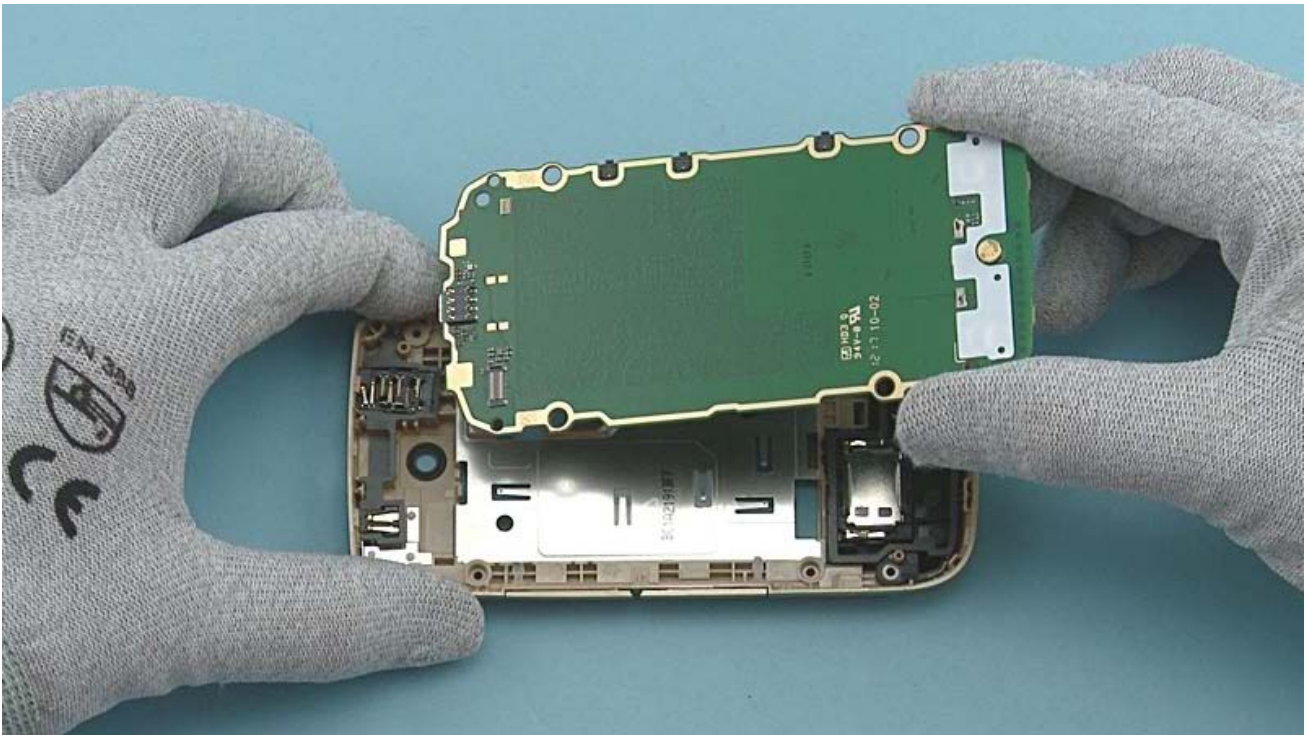
Use the SS-93 to release the clip holding the ENGINE BOARD near the VOLUME KEY.



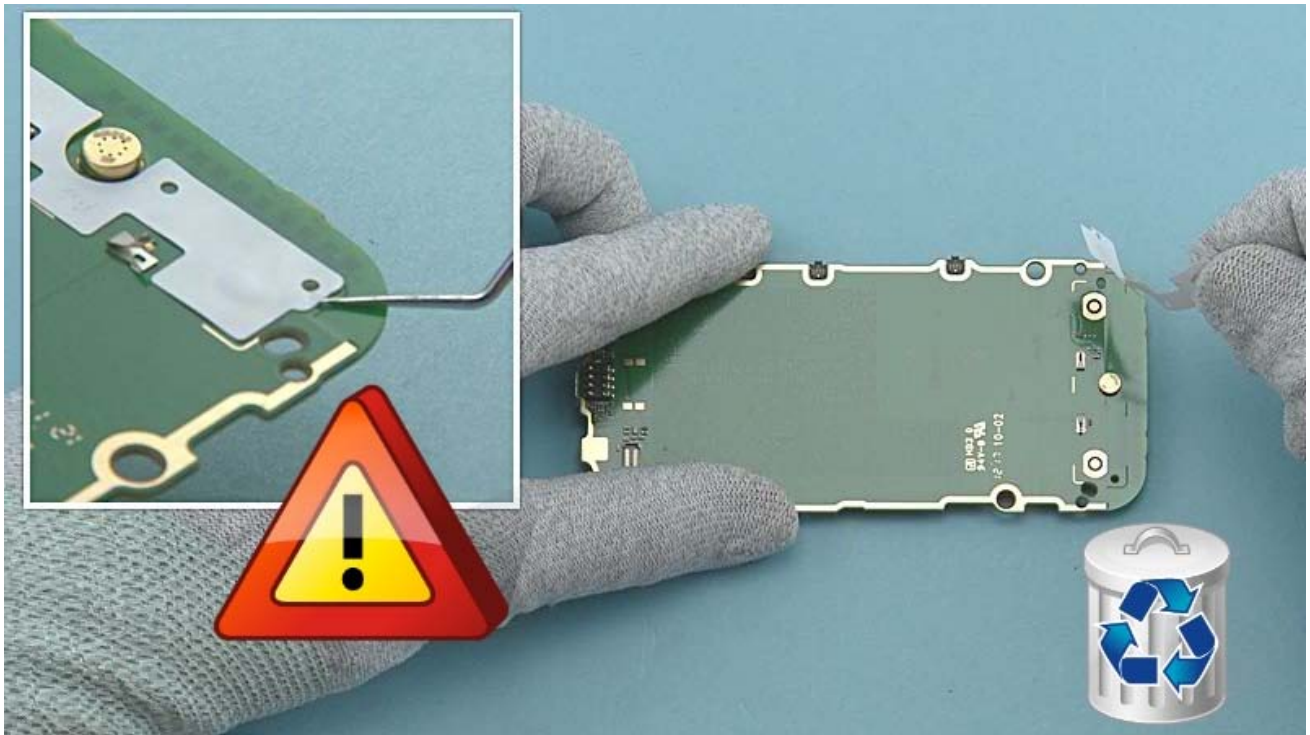
Use the SS-93 to release the clip holding the ENGINE BOARD on the left side of the D-COVER.



To detach the ENGINE BOARD first lift up the bottom end and then pull to the direction shown.



Remove the ENGINE BOARD.



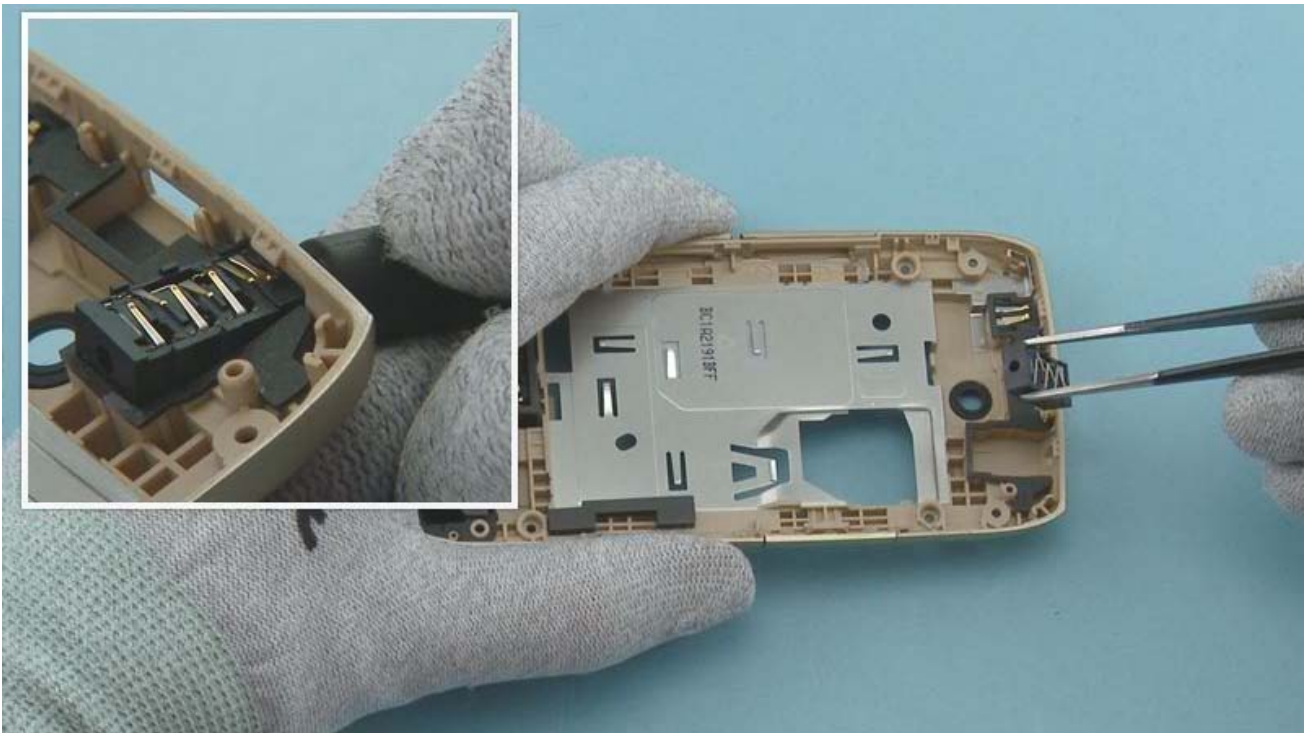
Release one corner of the DOMESHEET with the dental tool and then peel it off with fingers. Be careful not to damage any components nearby. Do not use the DOMESHEET again. Discard it.



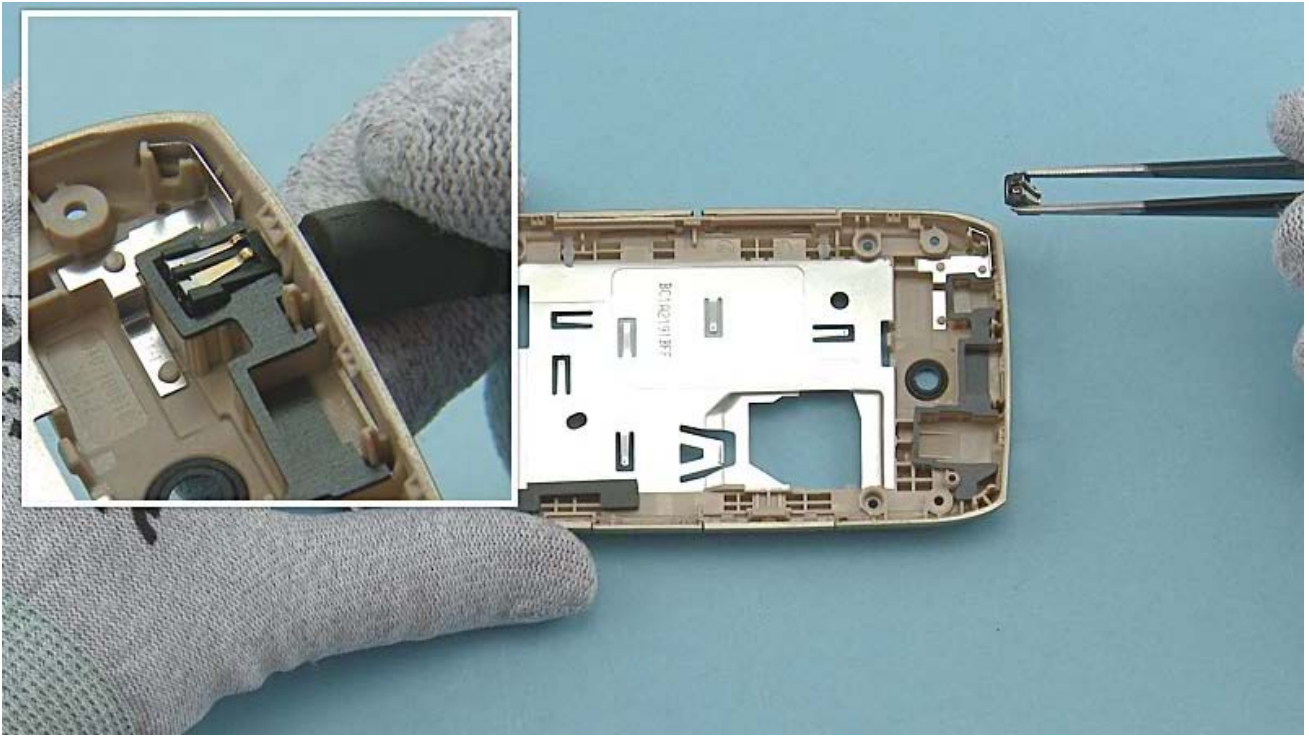
Place the camera removal tool SS-276 on top of the CAMERA and hold down the button on top of the SS-276.



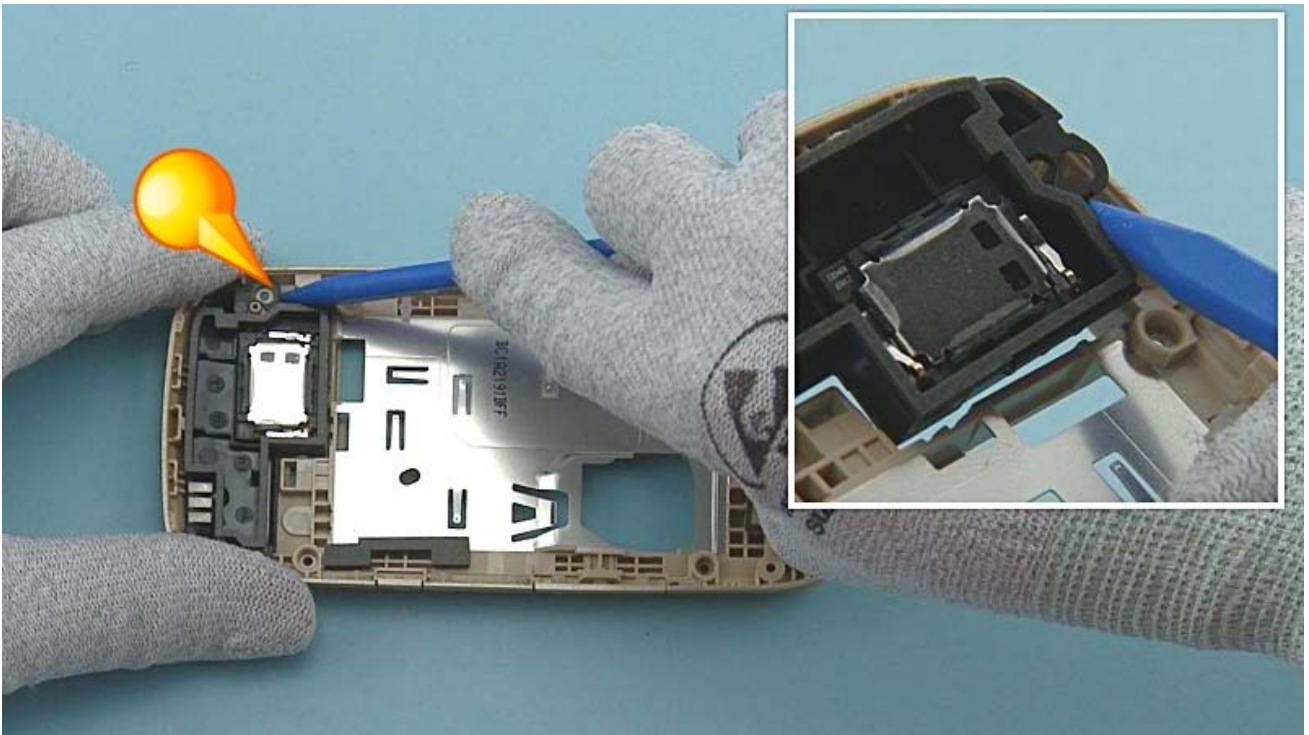
Lift up the SS-276 and remove the CAMERA.



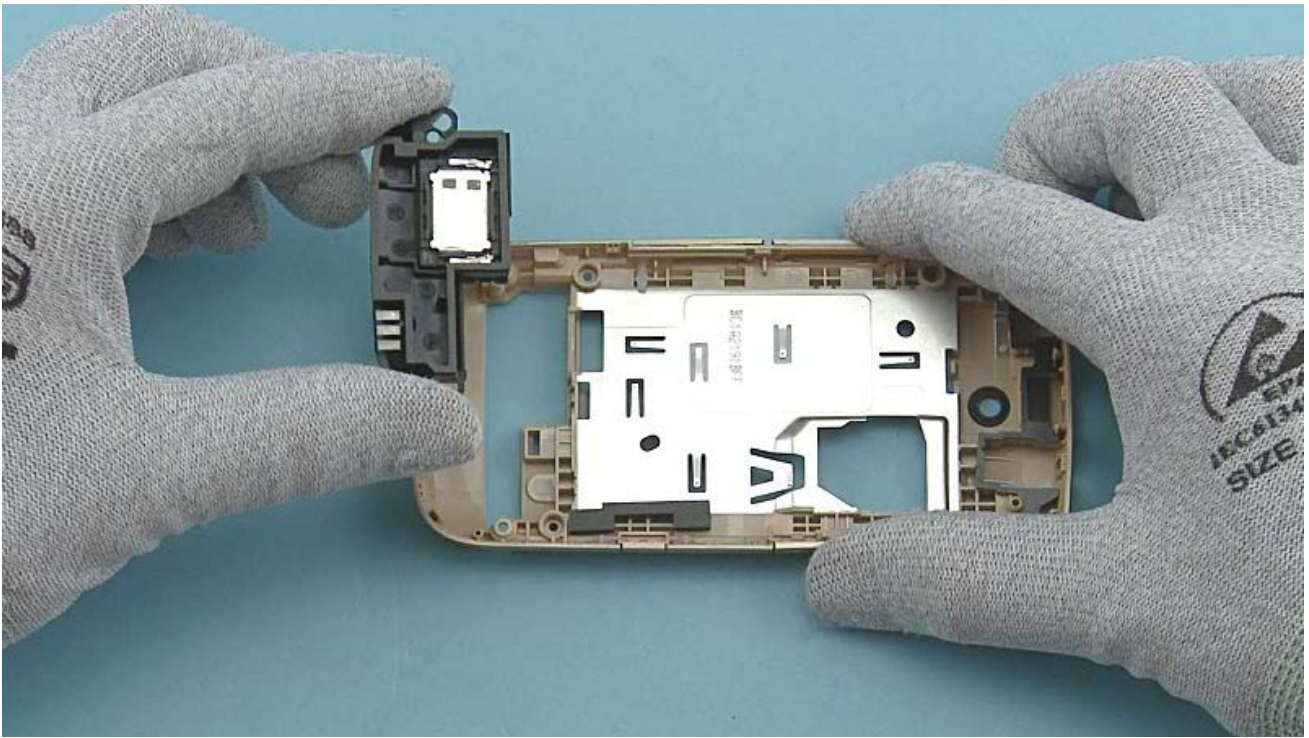
Use an AV plug to lever out the AV JACK. Remove the AV JACK with tweezers.



Use a DC plug to lever out the DC JACK. Remove the DC JACK with tweezers.



Release the clip holding the ANTENNA with the sharp end of the SS-93.



Remove the ANTENNA.



Use the SS-93 to detach the IHF SPEAKER. Remove the IHF SPEAKER tweezers.

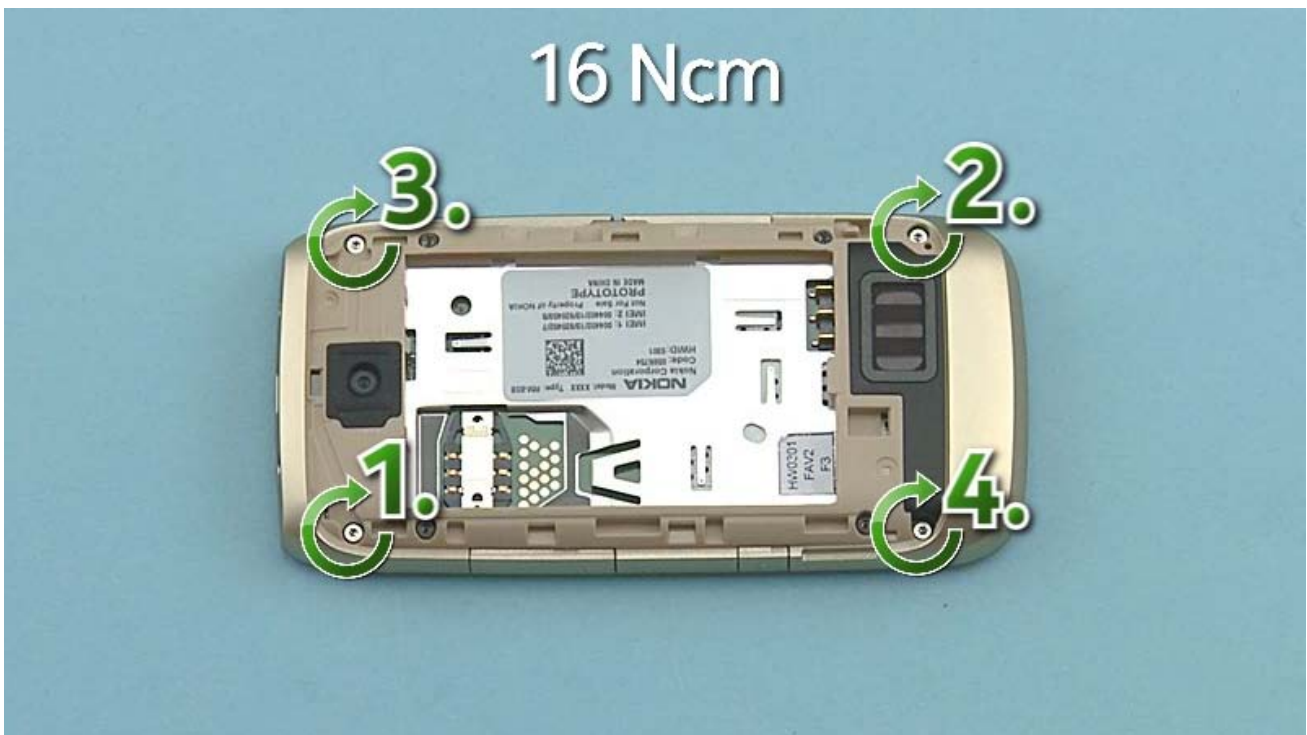


The Nokia Asha 308 and 309 disassembly procedure is complete.

-END OF DISASSEMBLY-



Tighten the four Torx+ size 5 screws to the torque of 14 Ncm in the order shown.



Tighten the four Torx+ size 4 screws to the torque of 16 Ncm in the order shown.



CA-101 Service cable



AC-16 Travel charger



SS-276 Camera removal tool

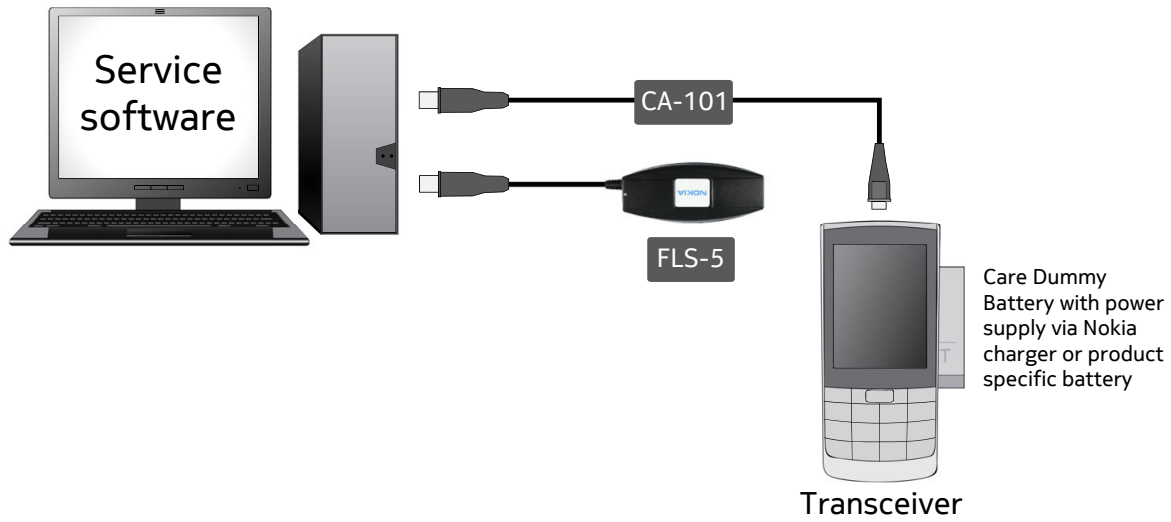


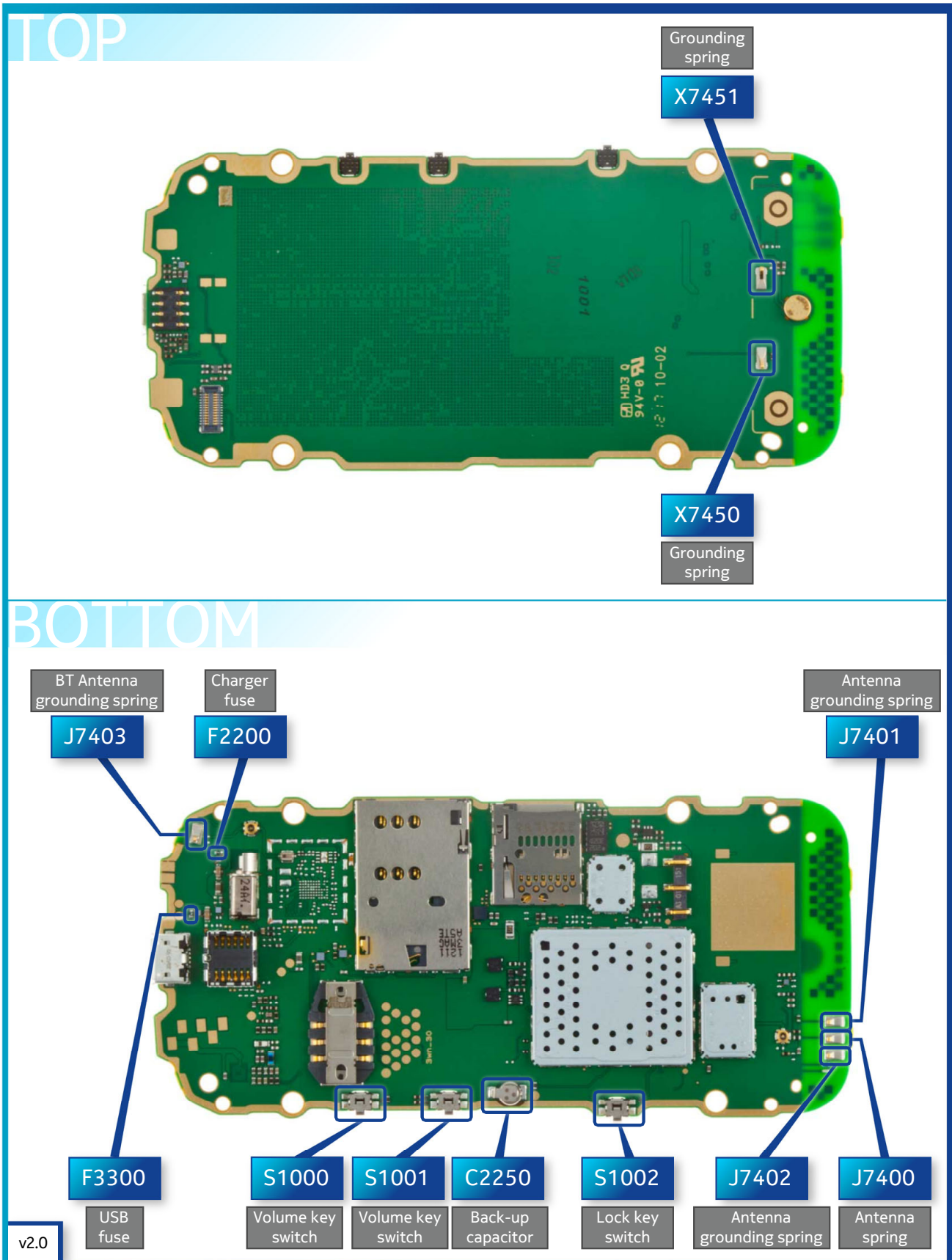
Nokia Standard Toolkit (v2)

For more information, refer to the Service Bulletin (SB-011) on Nokia Online. Supplier or manufacturer contacts for tool re-order can be found in "Recommended service equipment" document on Nokia Online.



Flashing concept





www.s-manuals.com