

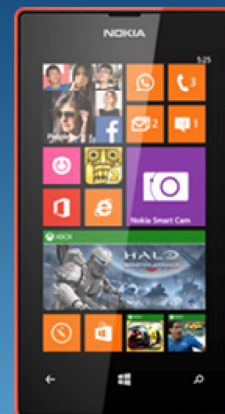
Nokia Lumia 525

RM-998

Key features

- Full WP8 Experience in affordable package
- 1 GHz Dual core CPU
- 4.0" IPS LCD Display (800 x 480 pixels)
- 5 MP Auto focus camera and 720p HD video recording
- MicroSD card support up to 64GB

Check the repair policy before performing any mechanical repair on Service Level 1&2!

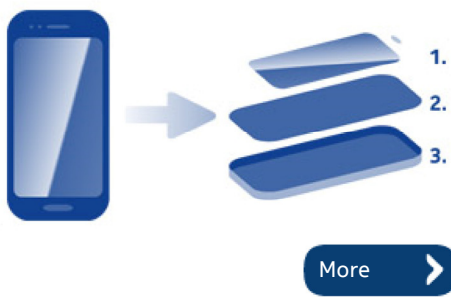


Version 1.0

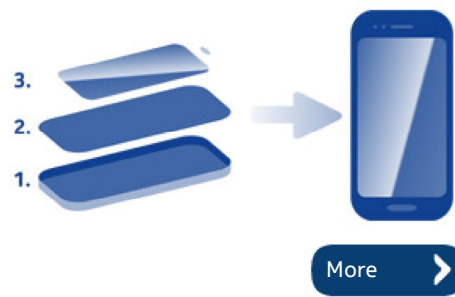
Exploded view



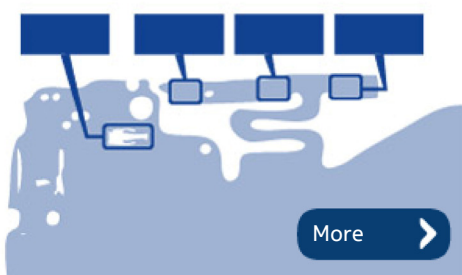
Disassembly steps



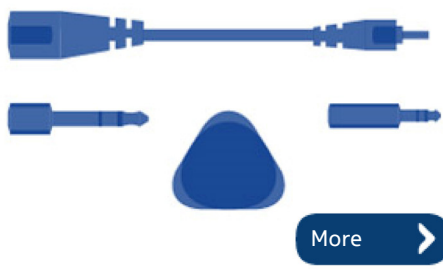
Assembly hints



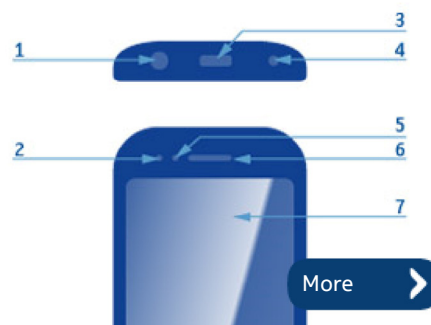
Solder components



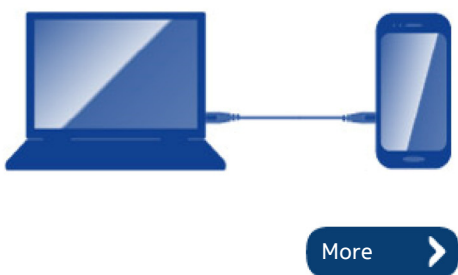
Service devices



Product controls and interfaces

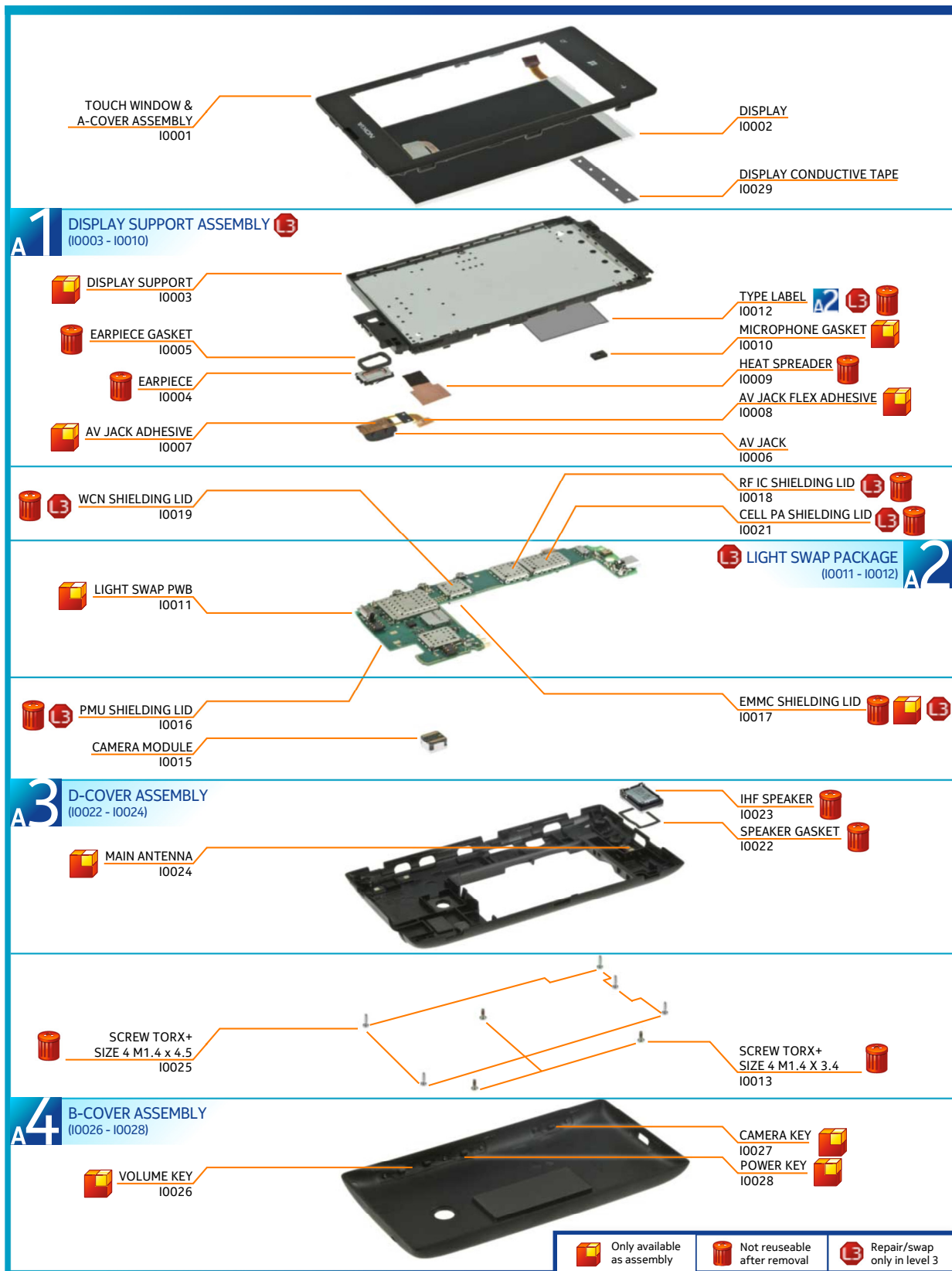


Service concept



Phone reset

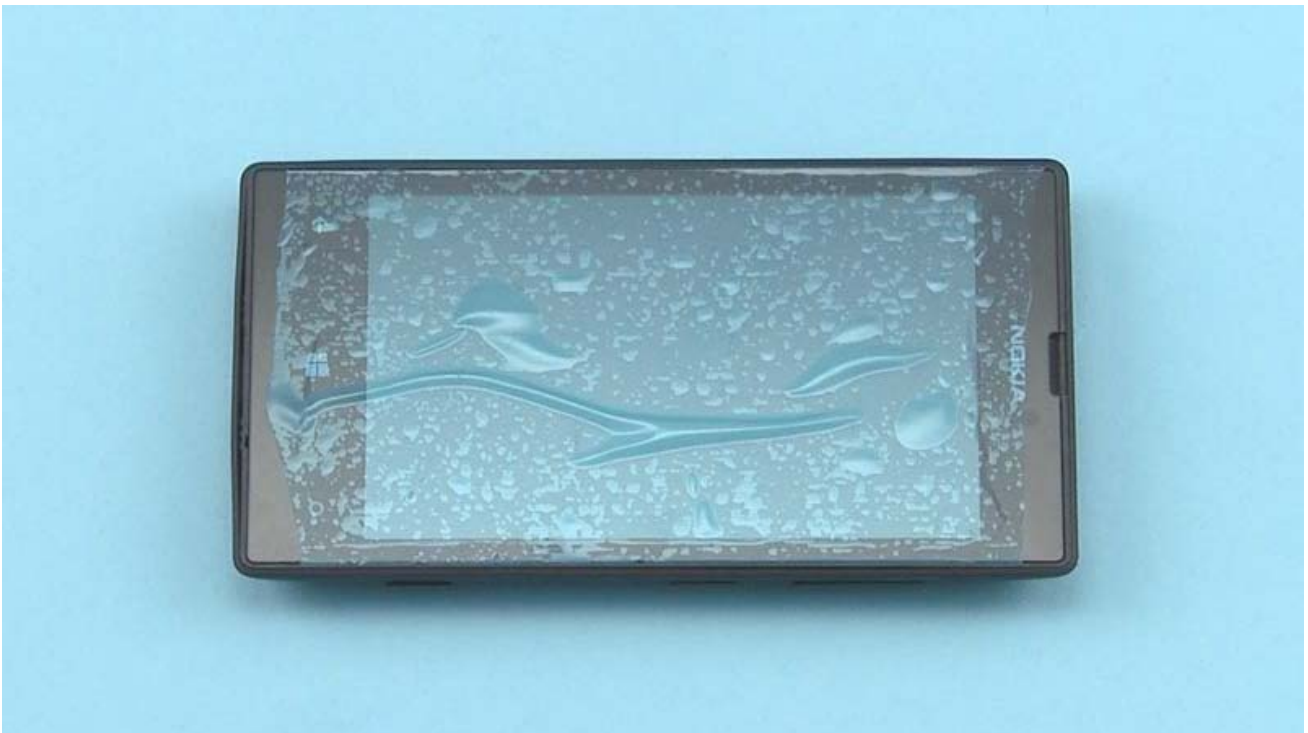




Only available as assembly	Not reusable after removal	Repair/swap only in level 3
----------------------------	----------------------------	-----------------------------



1) For disassembling you need the Nokia Standard toolkit version 2. You will also need the camera removal tool SS-305 and an AV plug.



2) Protect the TOUCH WINDOW with protective film.



3) Release the BACK COVER by pushing from the top.



4) Remove the BACK COVER.



5) Lift up the BATTERY from the bottom and remove it.



6) Unscrew the five Torx+ size 4 screws in the order shown. Do not use them again. Discard them.



7) Unscrew the three Torx+ size 4 screws in the order shown. Do not use them again. Discard them.



8) Release the two clips on the left side of the D-COVER with the SRT-6, starting from the bottom.



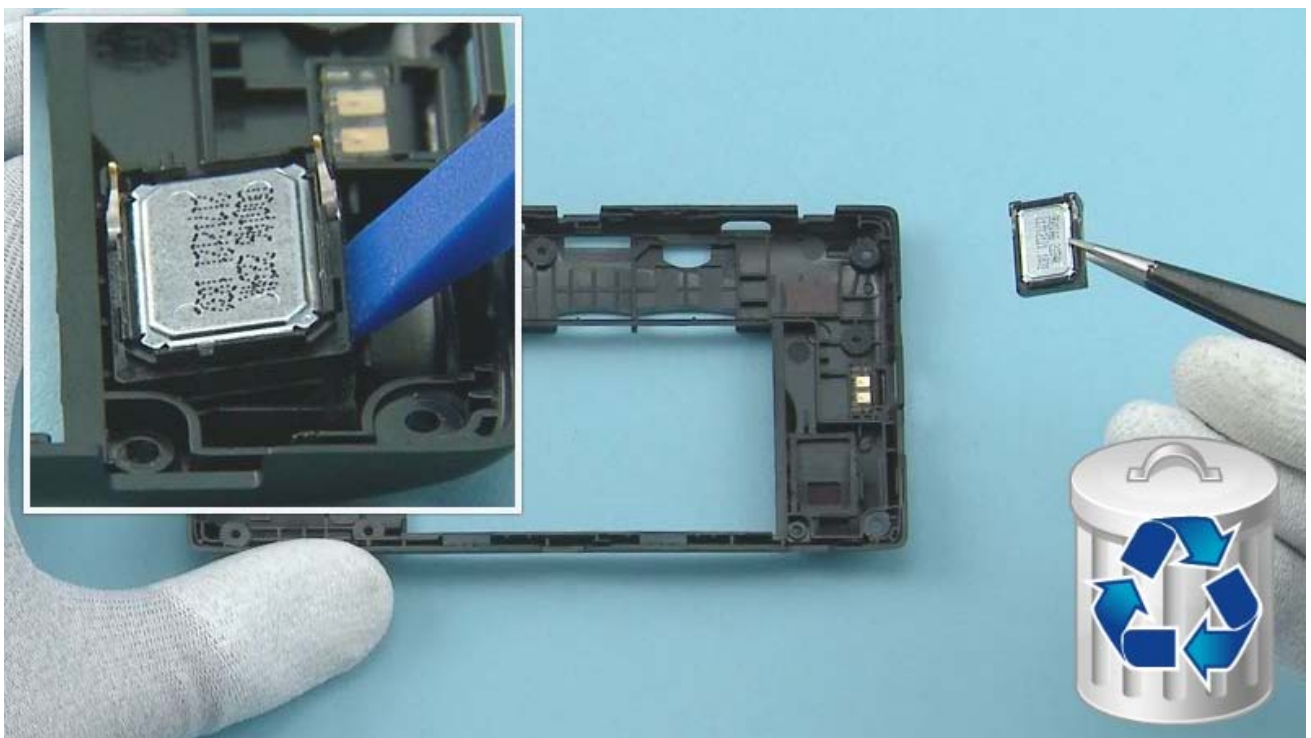
9) Then release the two clips on the right side of the D-COVER, starting from the bottom.



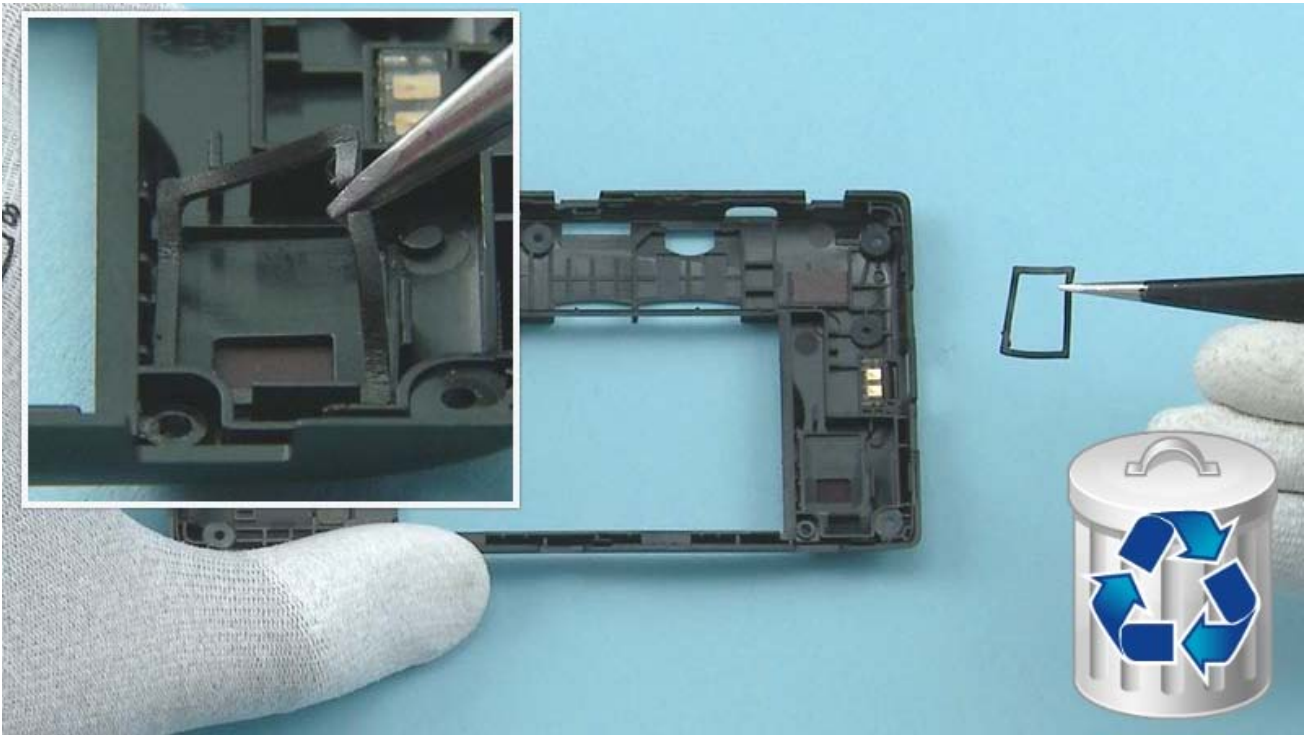
10) Release also the top side of the D-COVER from the shown place.



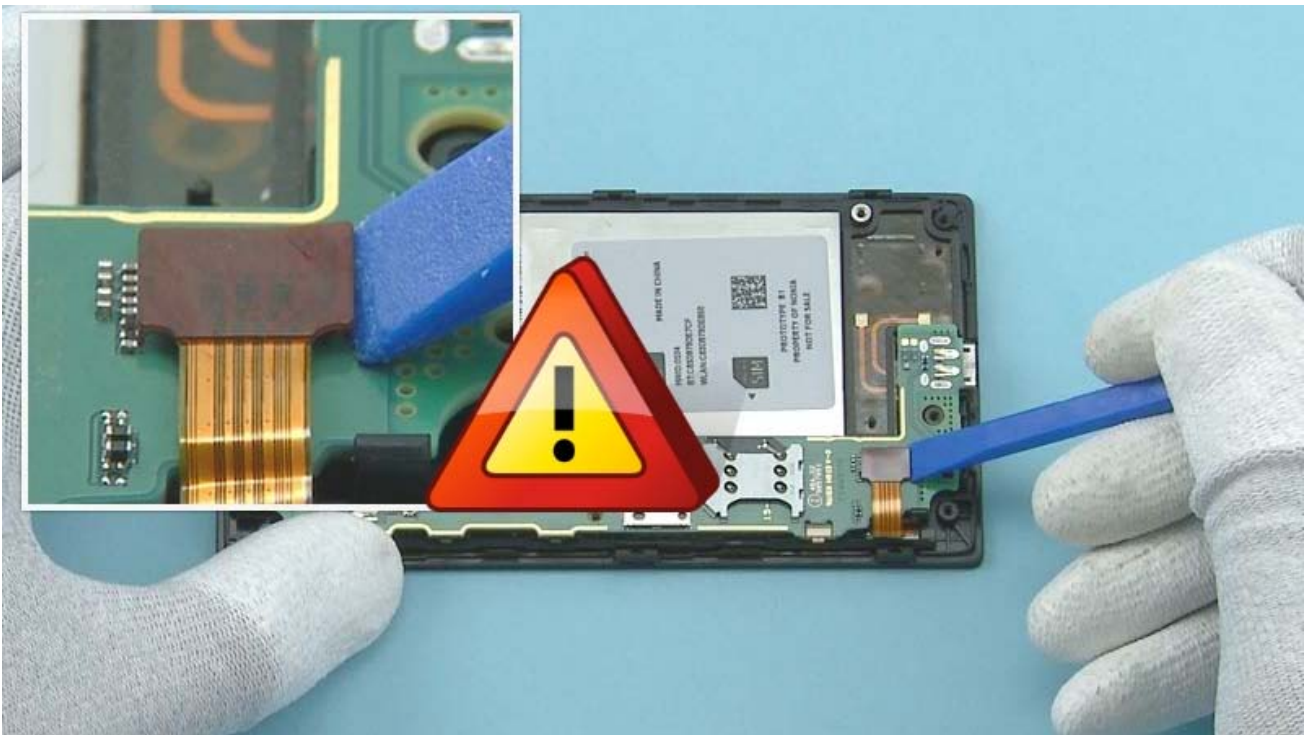
11) Lift up and remove the D-COVER.



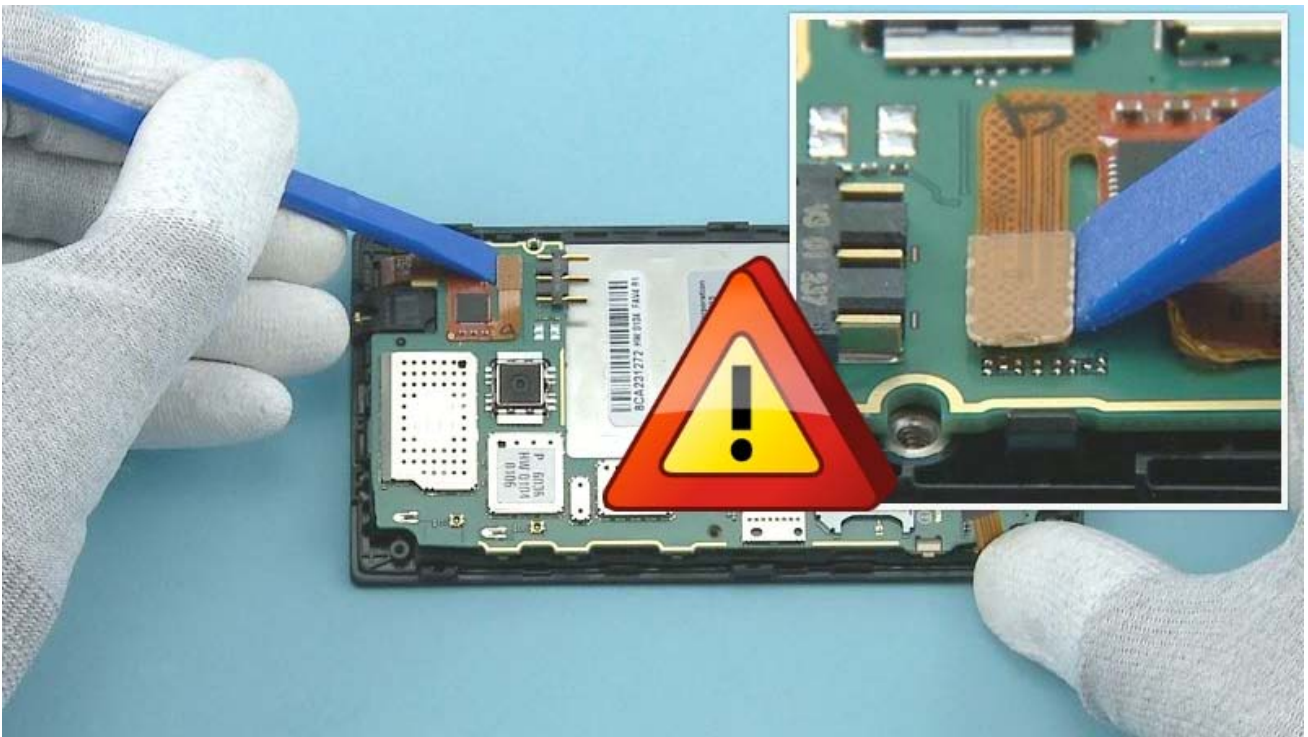
12) Release the IHF SPEAKER with the SS-93 and remove it with tweezers. Do not use it again. Discard it.



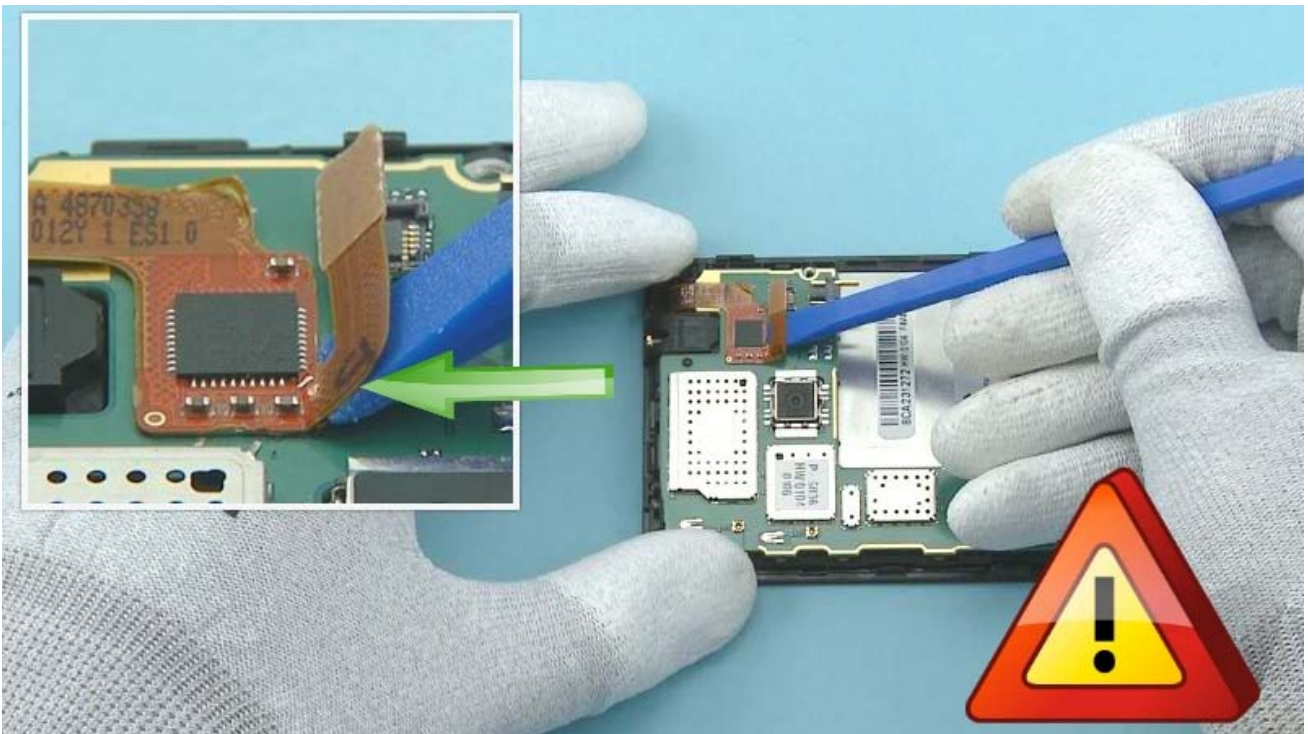
13) Remove the SPEAKER GASKET with tweezers. Do not use it again. Disard it.



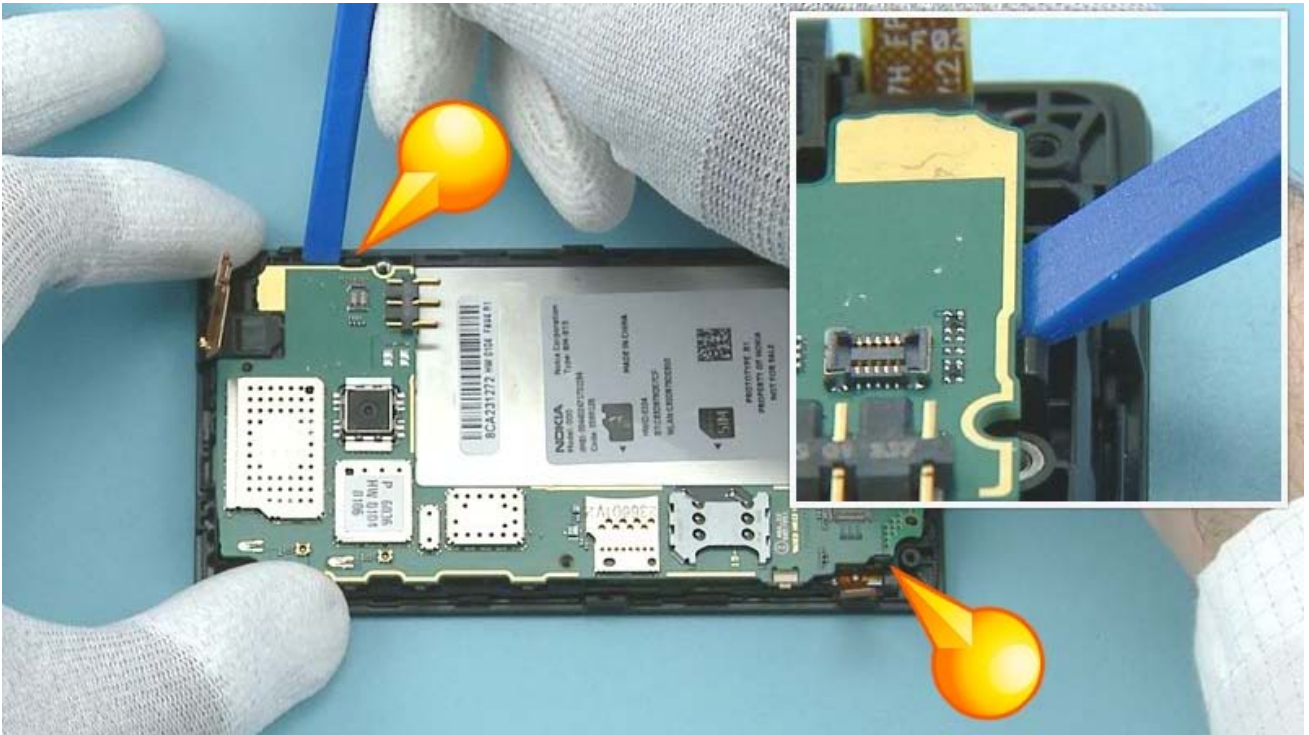
14) Open the DISPLAY connector with the SS-93. Be careful not to damage the connector or any components nearby.



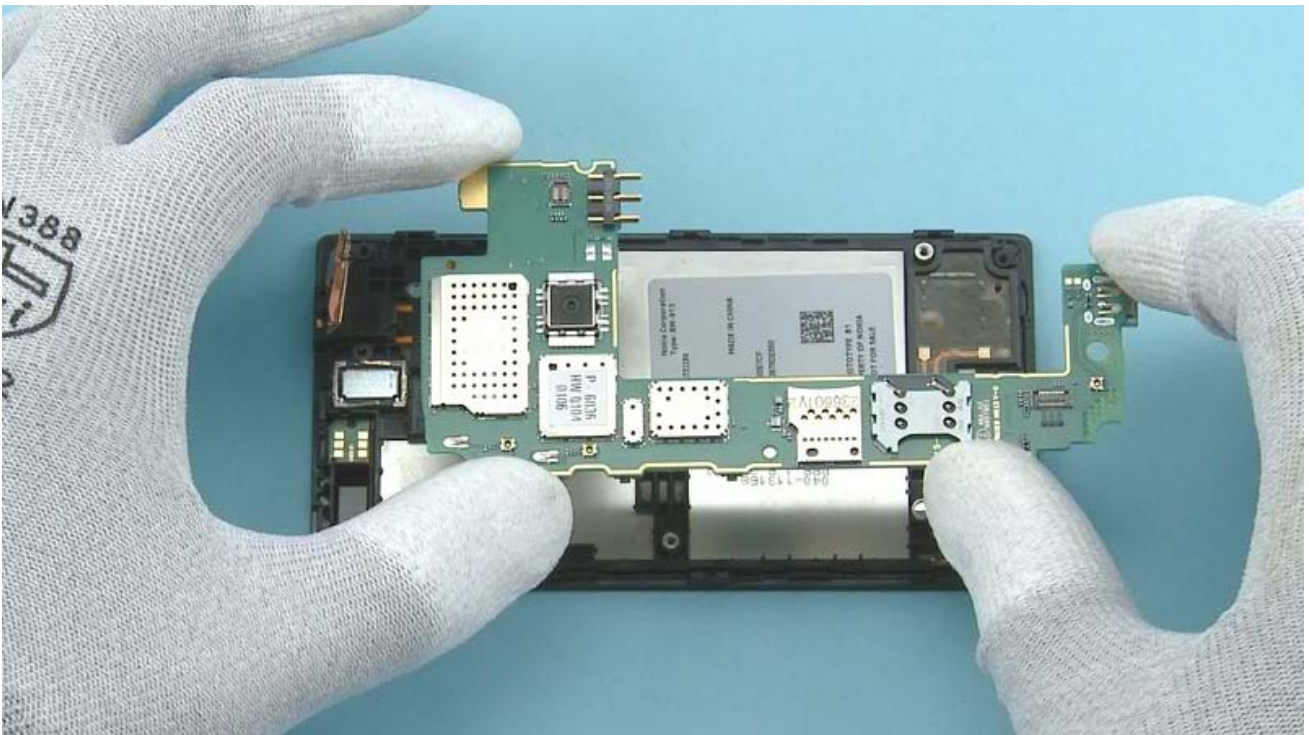
15) Open the TOUCH WINDOW connector with the SS-93. Be careful not to damage the connector or any components nearby.



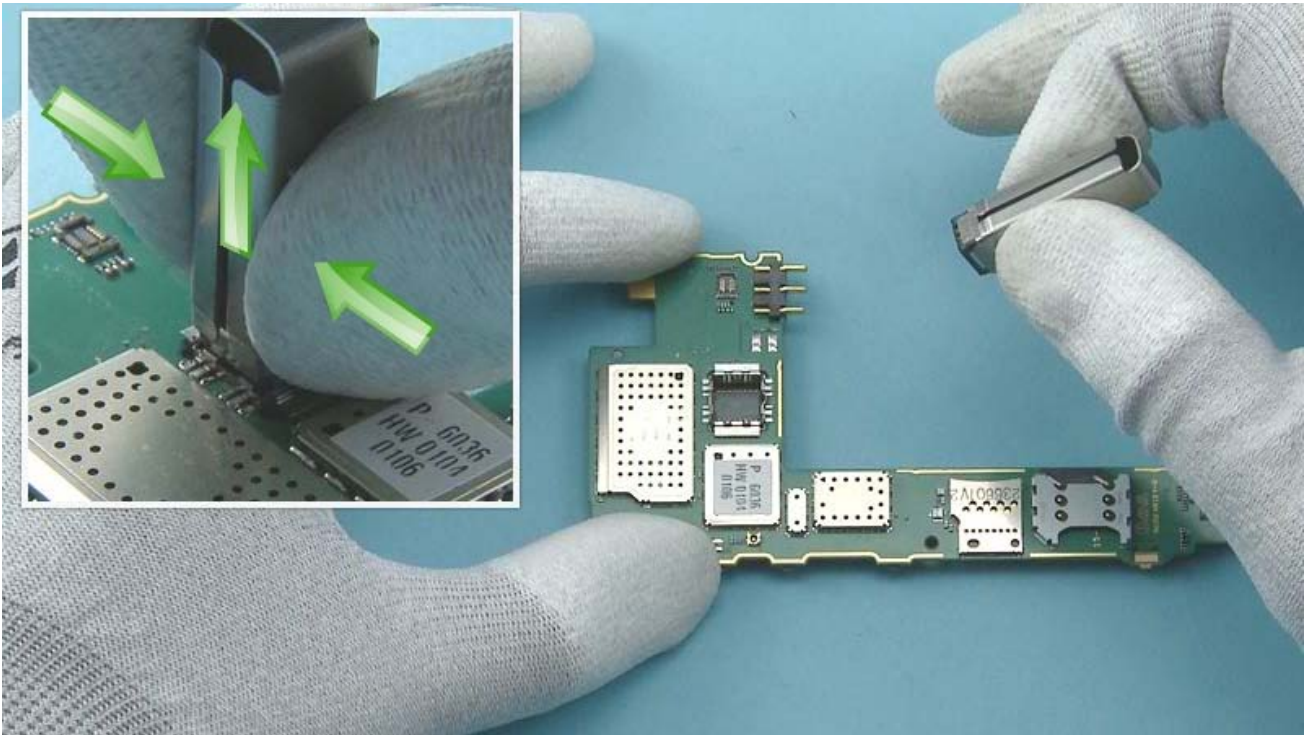
16) Release the TOUCH WINDOW connector flex from the ENGINE BOARD by carefully pushing it with the SS-93. Be careful not to damage the flex.



17) Release the two clips holding the ENGINE BOARD with the SS-93.



18) Lift up and remove the ENGINE BOARD.



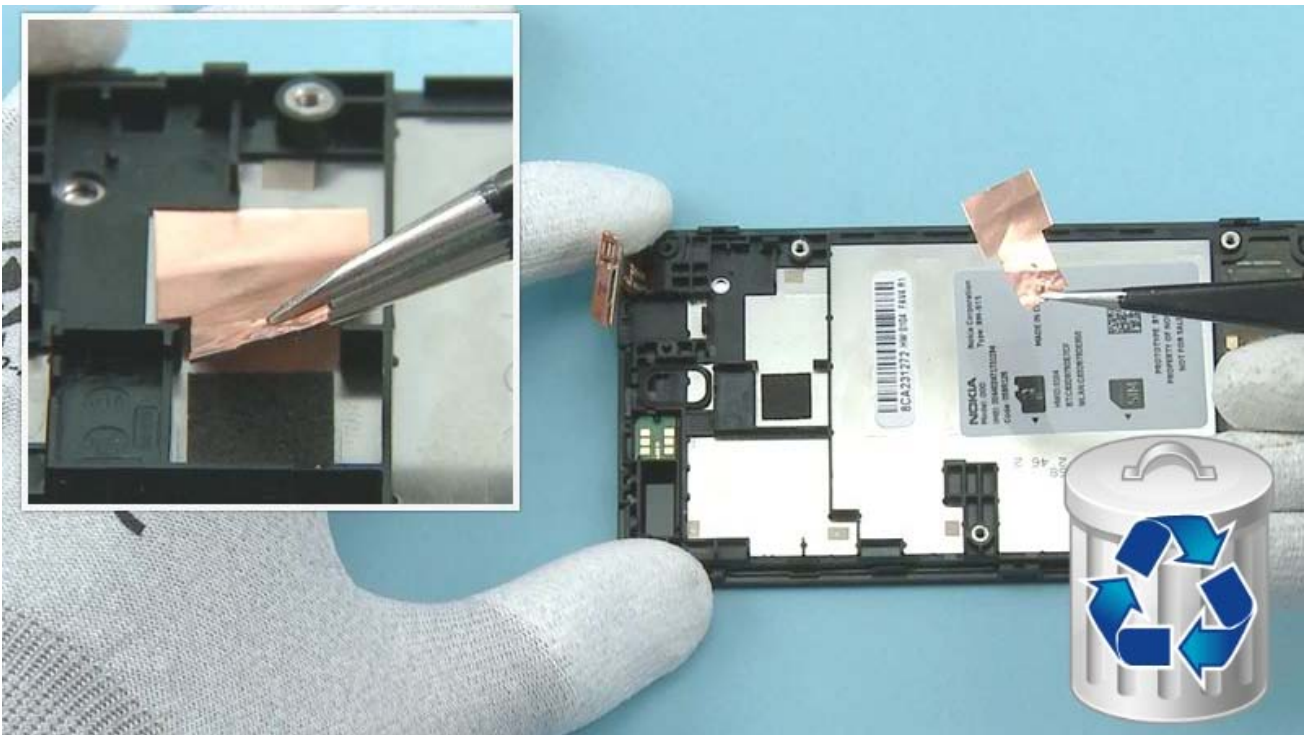
19) Remove the CAMERA with the SS-305 camera removal tool. Insert the tool to the CAMERA socket. Then press and hold from the sides and pull up the CAMERA.



20) Release the EARPIECE with the sharp end of the SS-93 and remove it with tweezers. Do not use it again. Discard it.



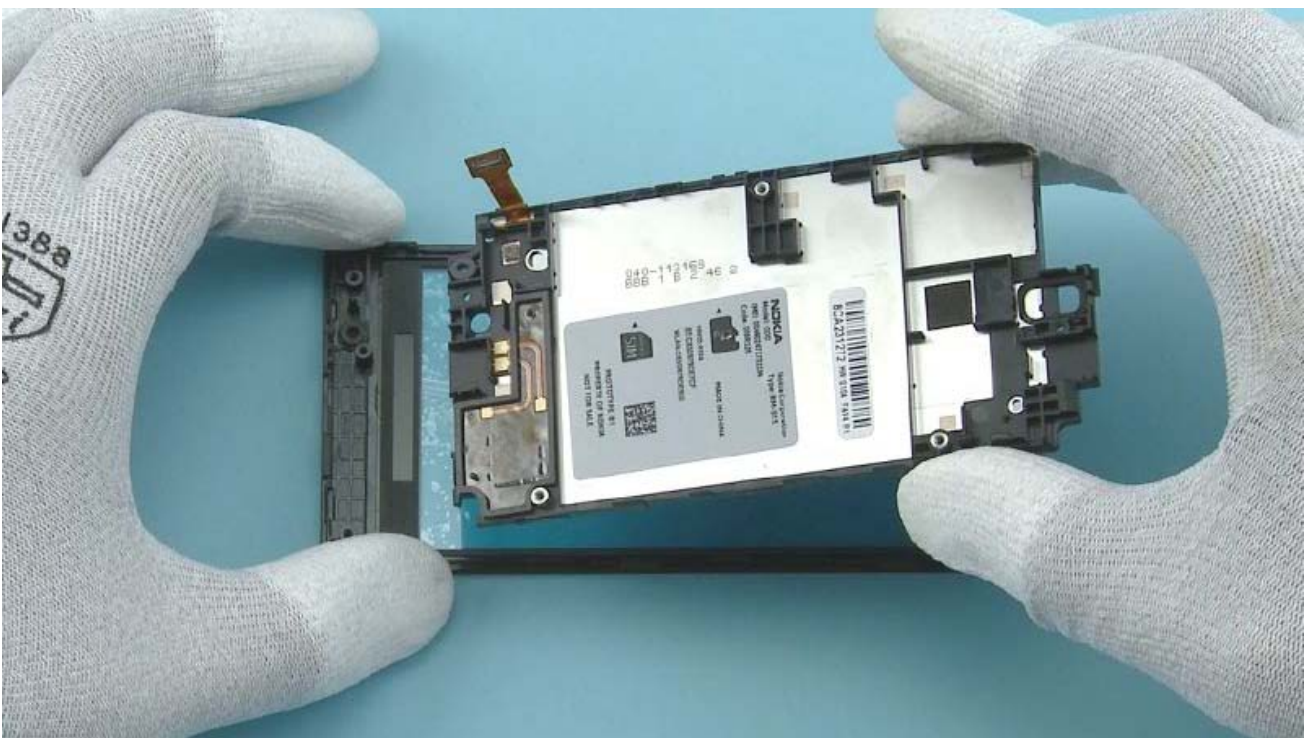
23) Then carefully release the AV JACK flex with the SS-93 and remove the AV JACK.



24) Remove the HEAT SPREADER with tweezers. Do not use it again. Discard it.



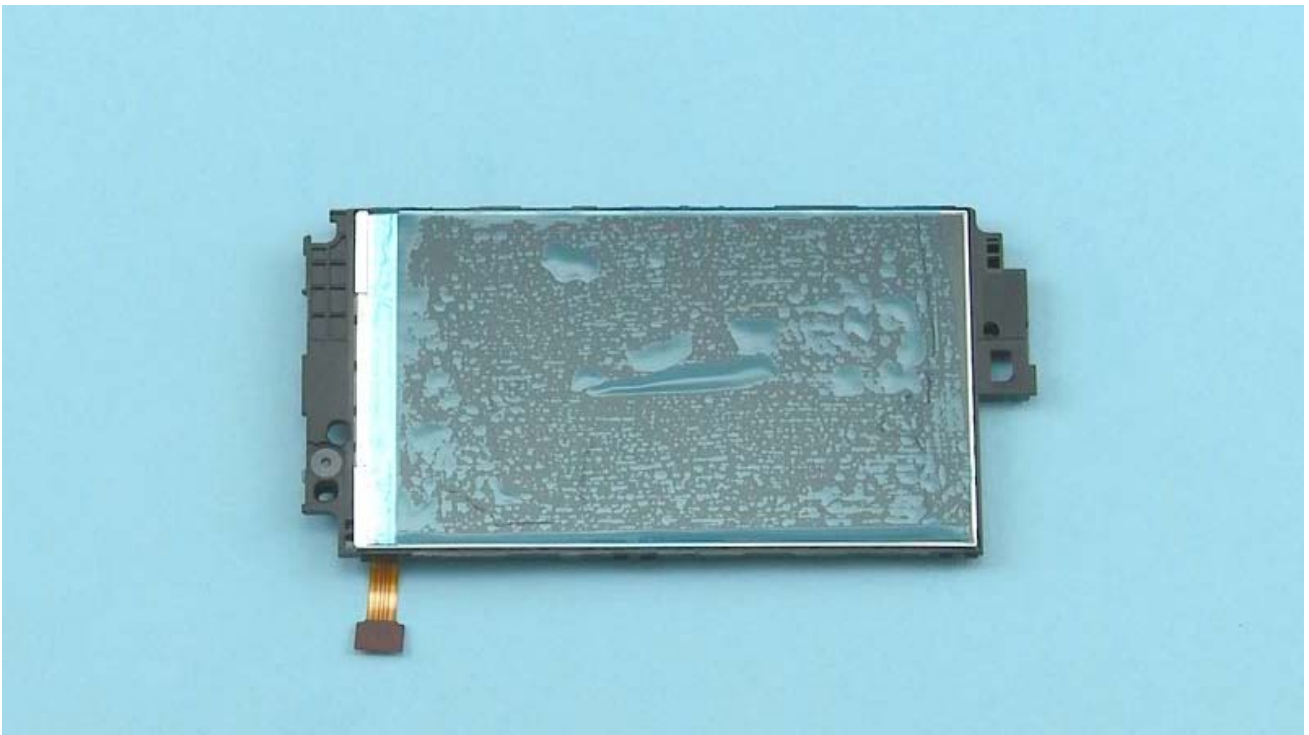
25) Release the DISPLAY SUPPORT from the shown place with the SRT-6.



26) Separate the DISPLAY SUPPORT including the DISPLAY from the TOUCH WINDOW.



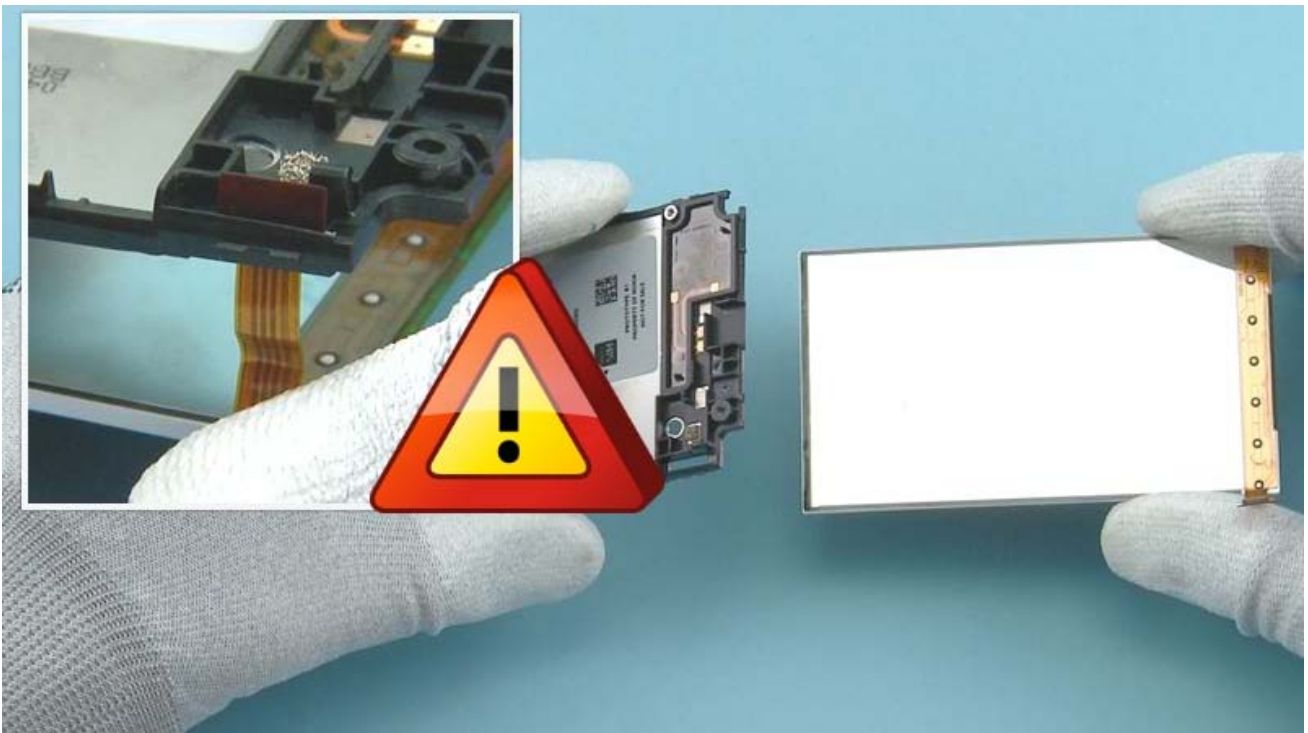
27) Protect the other side of the TOUCH WINDOW with protective film.



28) Protect the DISPLAY with protective film.



29) Carefully release the DISPLAY from the DISPLAY SUPPORT by pushing from the hole next to the DISPLAY flex with the sharp end of the SS-93. Note that releasing the DISPLAY is allowed ONLY from the shown place.

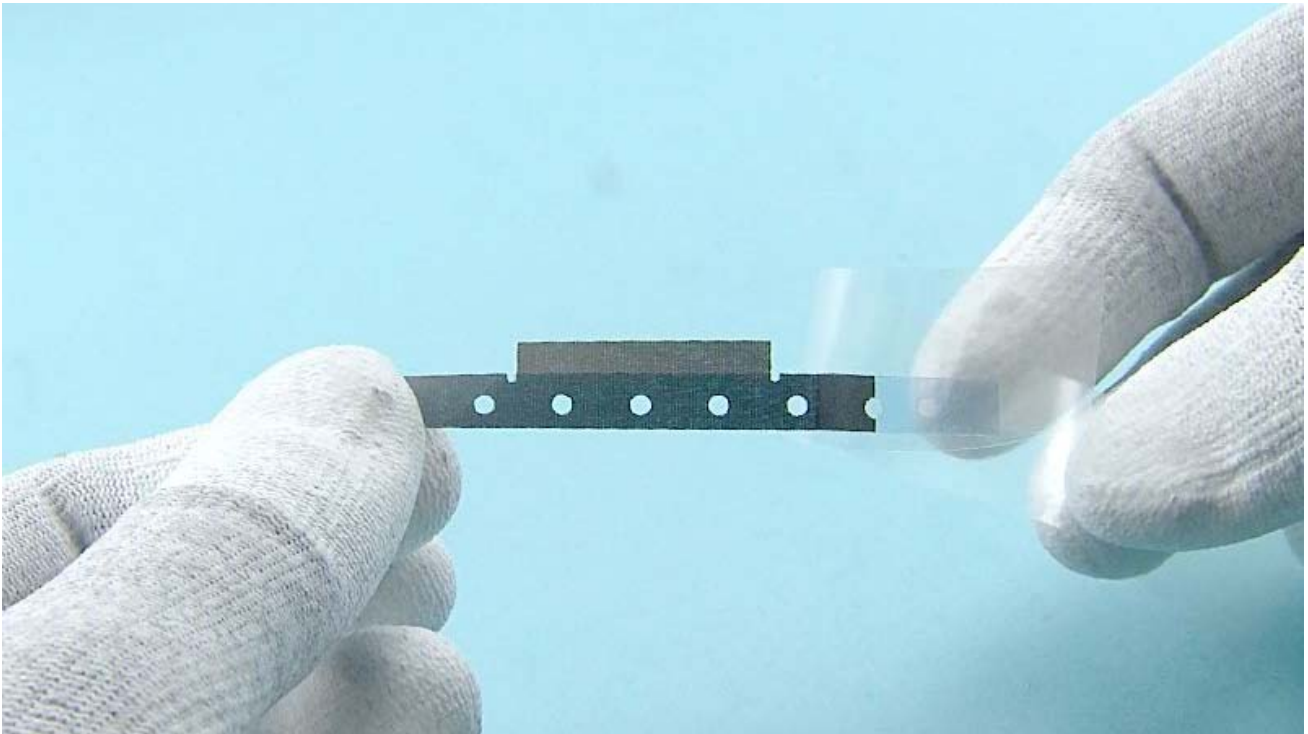


30) Separate the DISPLAY from the DISPLAY SUPPORT. Be careful not to damage the DISPLAY flex while guiding it through the DISPLAY SUPPORT.



31) The Nokia Lumia 525 disassembly procedure is complete.

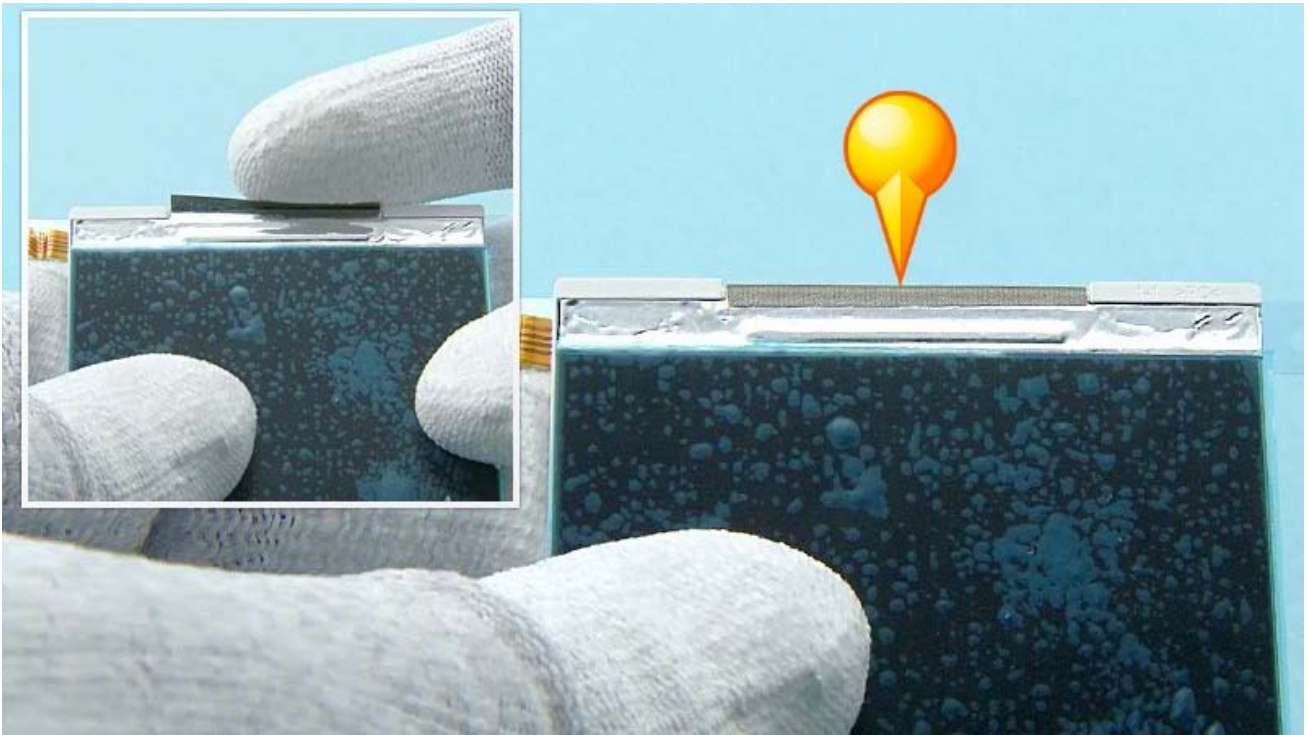
-END OF DISASSEMBLY-



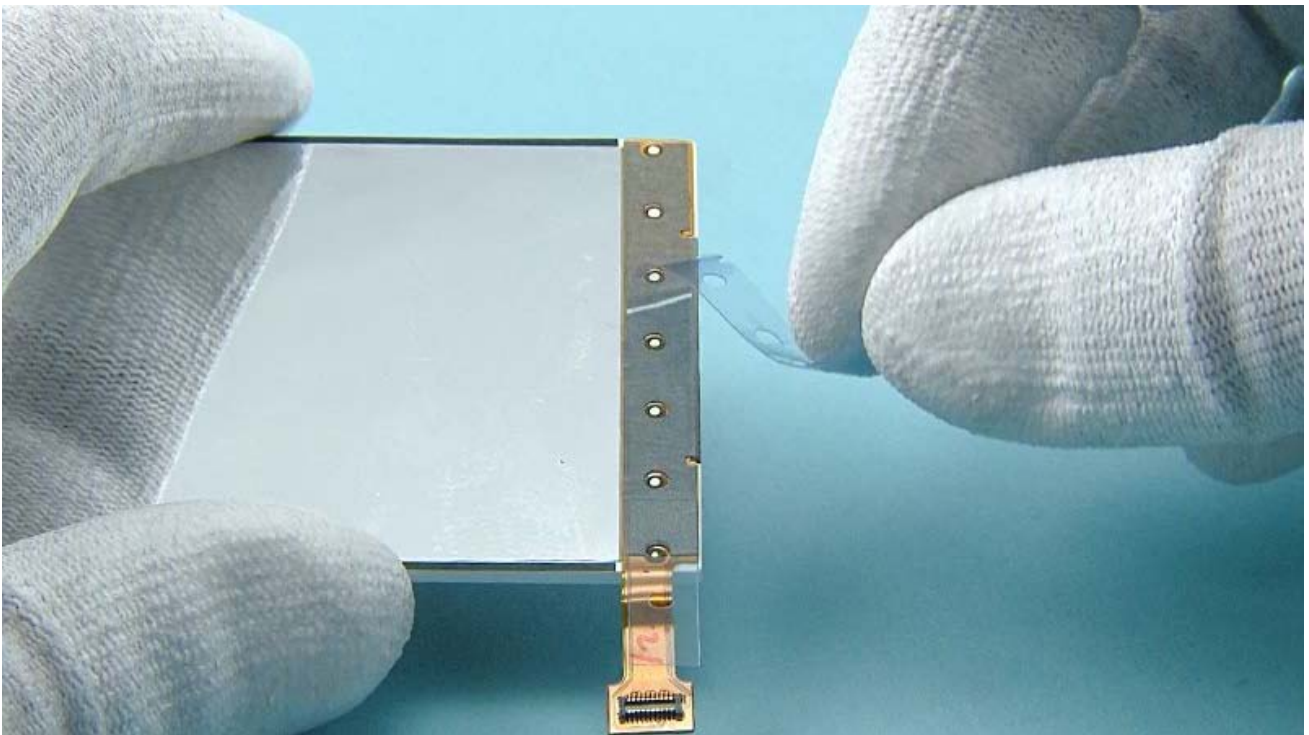
1) Before assembling the DISPLAY attach the DISPLAY CONDUCTIVE TAPE to the bottom back side of the DISPLAY. Start by removing the shown protective film from the DISPLAY CONDUCTIVE FILM.



2) Attach the DISPLAY CONDUCTIVE TAPE to the DISPLAY FPC as shown. Make sure that the shown holes of the DISPLAY CONDUCTIVE TAPE are aligned correctly with the DISPLAY FPC.



3) Fold the DISPLAY CONDUCTIVE TAPE to the front side of the DISPLAY as shown.



4) Remove the remaining protective film of the DISPLAY CONDUCTIVE TAPE.



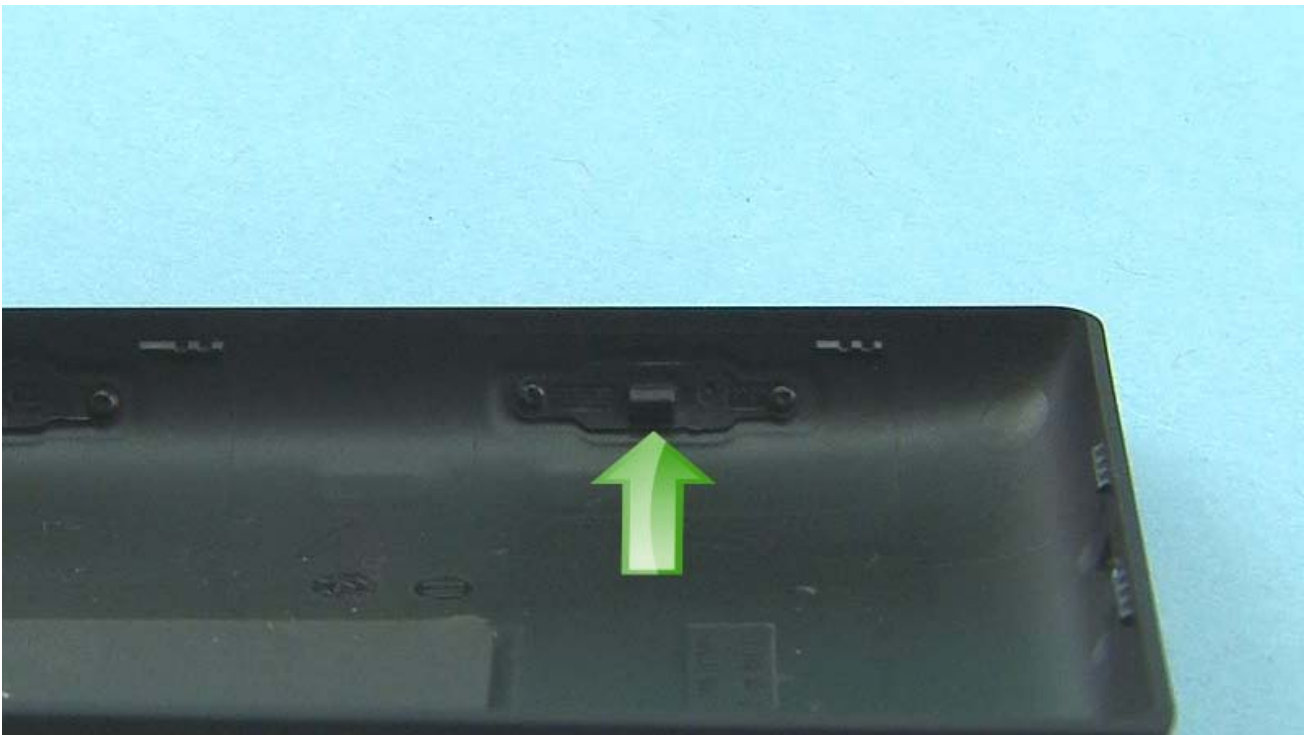
5) Fasten the three Torx+ size 4 screws in the order shown to the torque of 12 Ncm.



6) Fasten the five Torx+ size 4 screws in the order shown to the torque of 11 Ncm.



7) If there is a problem with the functionality of the CAMERA KEY, go through the following steps to fix it: First check that the CAMERA KEY switch is working properly by pressing it halfway (focusing) and all the way (taking a picture). If the CAMERA KEY switch is not working it has to be replaced. It is a level 2 part and needs soldering.



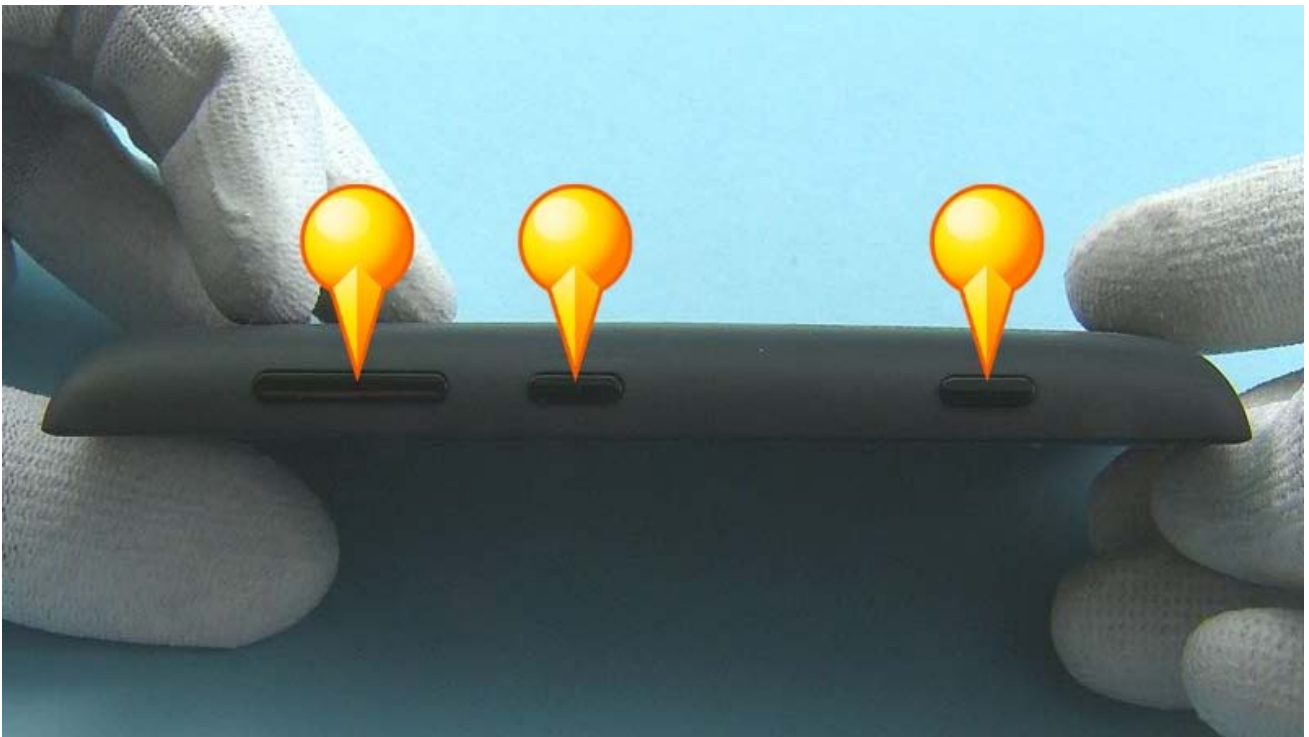
8) Secondly, check that the CAMERA KEY is assembled firmly by pushing it outwards from the inside of the BACK COVER.



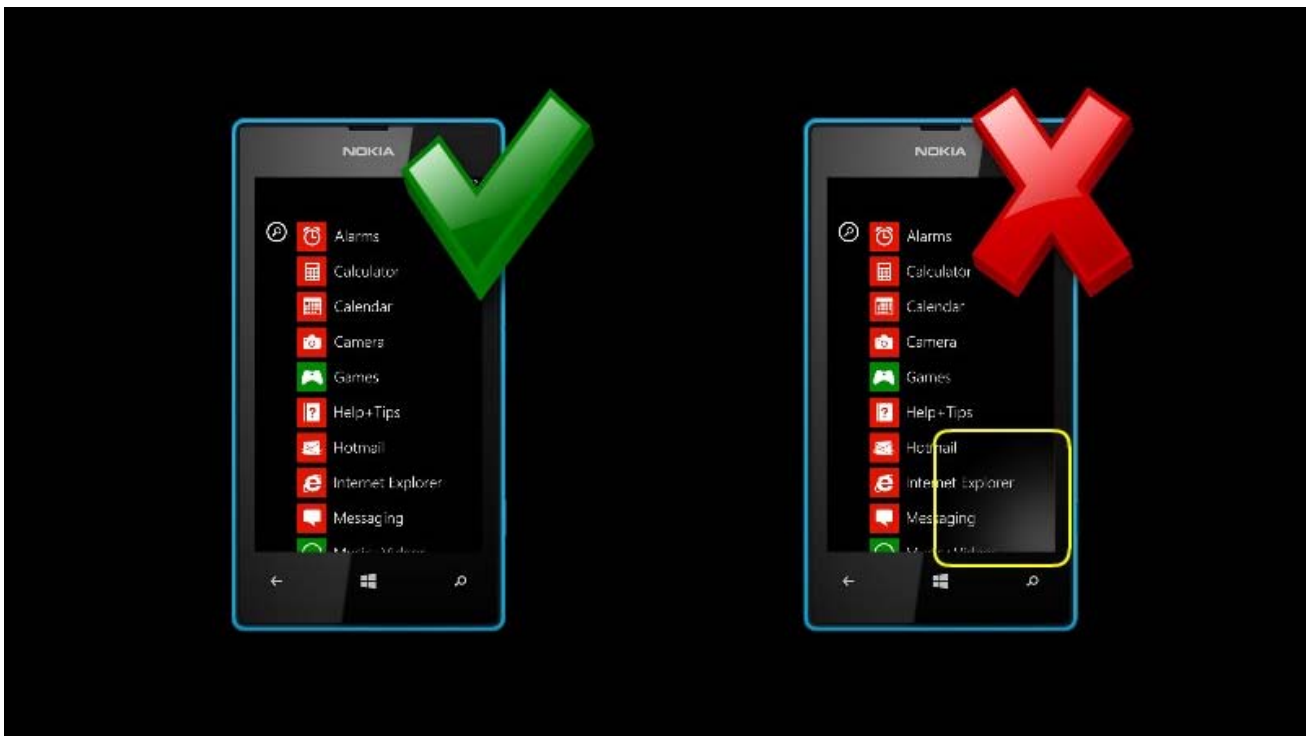
9) Then assemble the BACK COVER to the device bottom left corner first. Do not touch the SIDE KEYS.



10) Then press the BACK COVER to the device until it snaps.

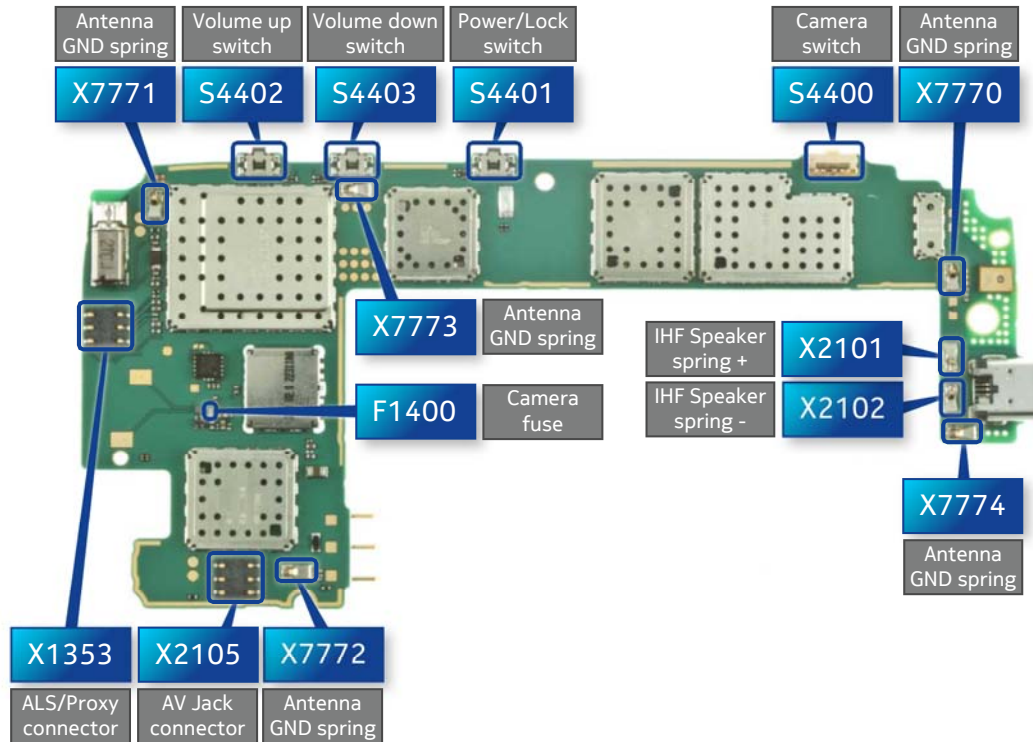


11) Check the tactility of the SIDE KEYS. If this does not solve the problem try using a BACK COVER from another working device and if it works, swap the BACK COVER to a new one.

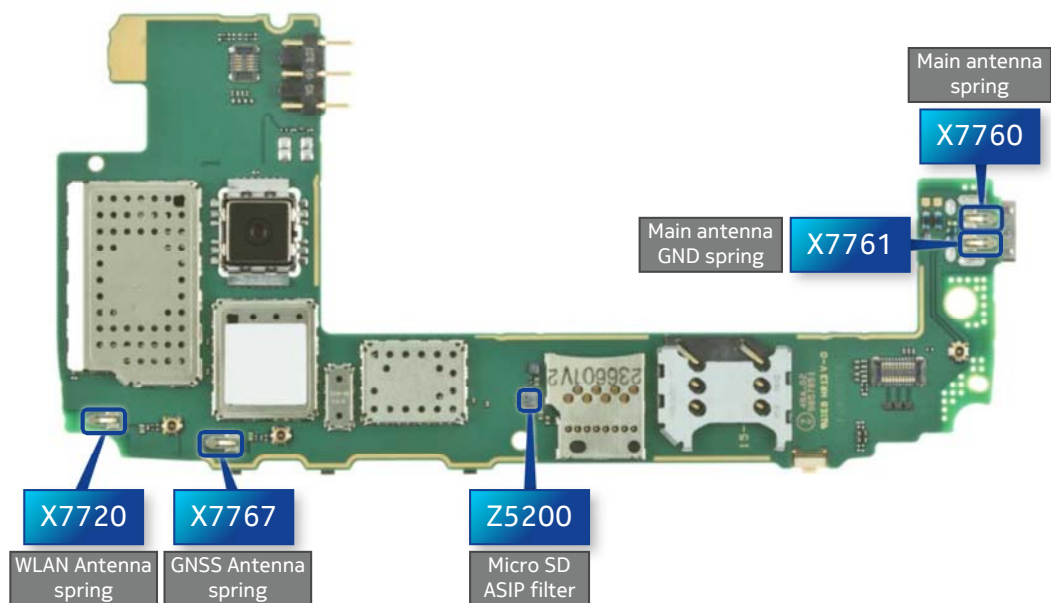


12) After the assembly procedure is complete, power on the device and put it in dark environment. Then check that there is no light leakage visible on the bottom right corner of the display.

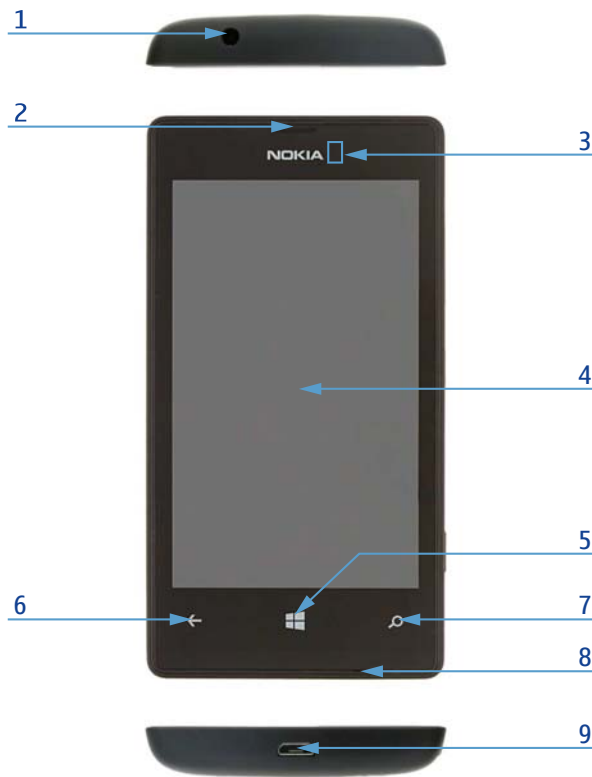
TOP



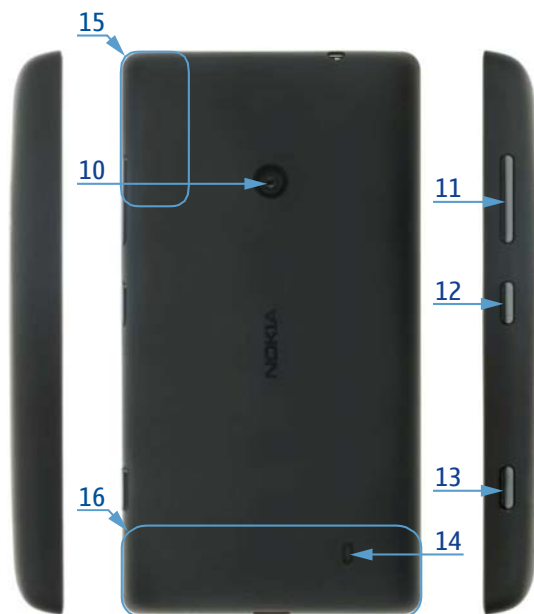
BOTTOM



 <p>CA-189CD Service cable</p>	 <p>AC-20 Travel charger</p>	 <p>BL-5J</p>
 <p>SS-305 Camera removal tool</p>	 <p>Nokia Standard Toolkit (v2)</p> <p>For more information, refer to the Service Bulletin (SB-011) on Nokia Online. Supplier or manufacturer contacts for tool re-order can be found in "Recommended service equipment" document on Nokia Online.</p>	

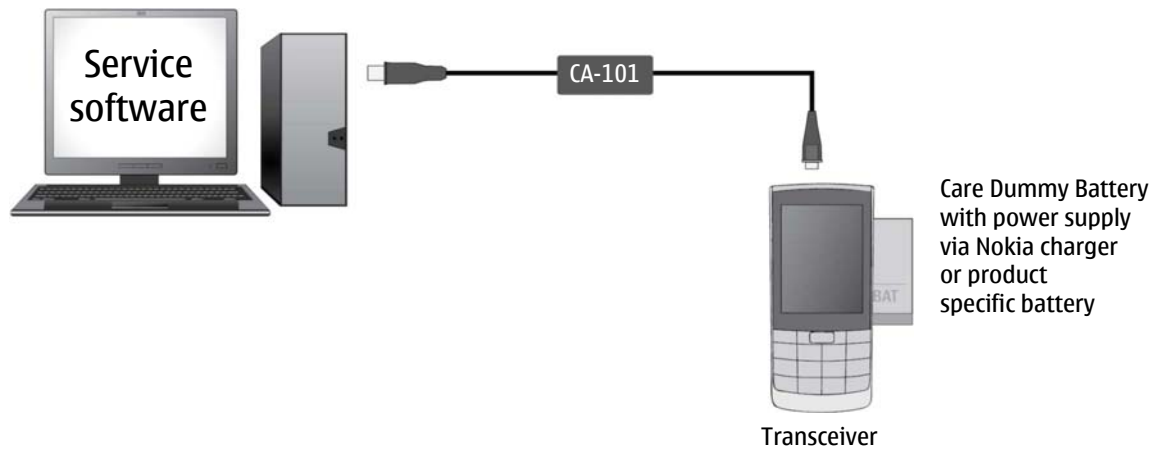


- 1 — 3.5 mm AHJ connector
- 2 — Earpiece
- 3 — Ambient light & Proximity sensors
- 4 — Touch screen
- 5 — Home key
- 6 — Back key
- 7 — Search key
- 8 — Microphone
- 9 — Micro USB connector
- 10 — Camera
- 11 — Volume keys
- 12 — Power/Lock key
- 13 — Camera key
- 14 — Loudspeaker
- 15 — GNSS antenna
- 16 — Cellular antenna



v1.0

Flashing concept



Hardware reset

If the phone hardware is jammed, you should first recommend that the consumer performs a hardware reset. The hardware reset does not reset the Windows Live ID or remove any consumer data.

To perform a hardware reset, remove the battery and wait for one minute before reinserting it. Boot up the phone normally.

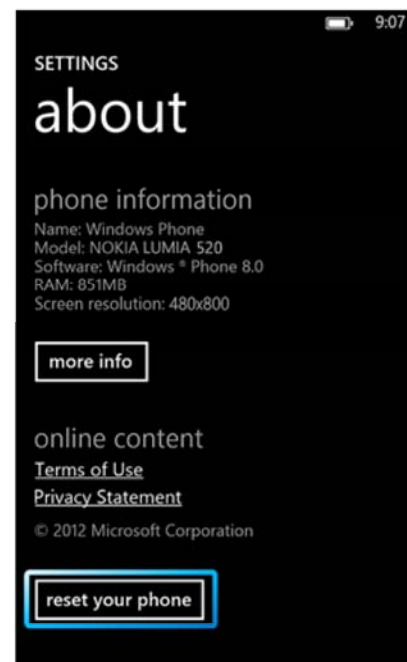


Software / operating system (OS) reset

The software / operating system (OS) reset returns the phone to its out-of-the-box state. Note that this procedure erases all consumer data! Always first try to perform a hardware reset.

Option 1: About menu

- Use this option if the consumer knows the lock code
- This option warns the consumer about data loss!
- Tap **Settings > About > reset your phone**



Option 2: Hardware key combination

- Use this option if the phone is locked and the consumer does not know the code
- Note: no warning about data loss!
- Do not advertise this feature to consumers!

Follow next steps to perform OS reset with phone keys.

Step 1

Make sure the phone is turned Off.

1. Press and hold the power key
2. Phone vibrates (release the power key)
3. Press and hold the volume down key
4. Exclamation mark is shown on the screen (release the volume down key)



Step 2

Input the following key combination:

1. Volume up
2. Volume down
3. Power
4. Volume down



Step 3

The phone will reset and boot up automatically. Please note that this may take several minutes.



Version	Date	Description
1.0	28.11.2013	First published version

www.s-manuals.com