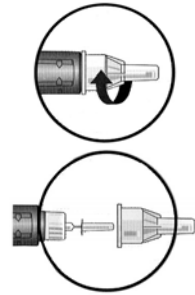
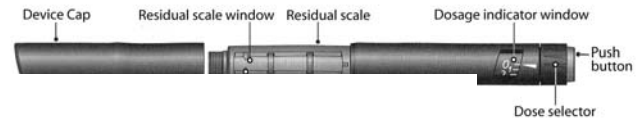


# How to use your NovoLog<sup>®</sup> FlexPen<sup>®</sup>

## Step 1: Prepare your syringe



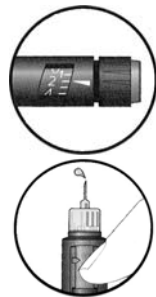
- Take the cover cap off of your syringe.
- Open a new needle by removing the paper tab.
- Screw the needle onto your FlexPen.
- Remove both the outer and inner needle caps.
- After the needle is in place, do an **air shot** before taking your injection.



### **Expiration:**

Each Novolog pen should be used within 28 days once out of the refrigerator.

## Step 2: Do an air shot (Prime the needle)



1. Dial 2 units.
2. Hold the syringe with needle pointing up and tap reservoir gently to move air bubbles to top of needle.
3. Press the push button on your syringe as far as it will go until a drop of insulin appears.

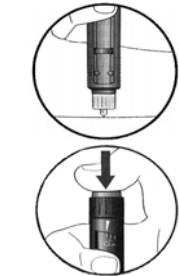
**Note:** If your pen is new, you may need to repeat steps 1 - 3 several times before a drop of insulin appears. If you need to do this more than 6 times, don't use the syringe.

## Step 3: Dial your dose



- Make sure your dose selector is set at 0.
- Dial the number of units you need to inject. 1 Click = 1 unit of insulin.
- If you need to correct your dose, dial the dose selector either up or down. Be careful not to press the push button while dialing or insulin will come

## Step 4: Give the injection



- Use the injection technique you learned from your doctor or nurse.
- When the needle is under your skin, inject the insulin by pressing the push button all the way in.
- Leave the needle under your skin for at least 10 seconds after injecting your insulin. Keep the push button fully depressed until withdrawing the needle. This will ensure that you've received the full dose of insulin.

## Important notes about your disposable needles:

- Don't place a needle on your pen until you are ready to use it.
- Remove the needle from the pen immediately after use.
- Don't recap the needle.
- Safely dispose of the needle.
- Use a new needle for each injection.

**If you have any questions or concerns, contact Novo Nordisk 1-800-727-6500.**

Artwork is courtesy of Novo Nordisk Pharmaceuticals, Inc.