

MINOLTA

Dimâge RD 3000

High-performance digital SLR camera for professional use



Q U A L I T Y P L U S

Superb image quality: 2.7 million pixels

High-quality interchangeable lenses

Wide range of Dynax and Vectis accessories

Compatible with CompactFlash Card Type I & II

Lightweight and compact design

All photos in this catalogue, including product photos, were taken with the RD 3000.



Dimâge RD 3000

Photo: RD 3000 with V lens 50mm f/3.5 Macro; 1,360 x 1,984 pixels; shutter-speed 1/125 s; f/16; Fine Mode; flash light.
The RD 3000 captures even the fine rosin particles coming off the bow.

If you use digital photography for professional imaging applications, your first consideration will undoubtedly be image quality. Minolta has responded to your needs with the new Dimâge RD 3000: a digital SLR that offers 2.7-million pixel resolution for unsurpassed image quality. Furthermore, you also get wide-angle viewing, a compact, lightweight body, advanced functions, and a wide range of high-performance interchangeable lenses and accessories. It all adds up to greater versatility and ease of use. Dimâge RD 3000: the digital SLR you've been waiting for.

2,700,000 pixels



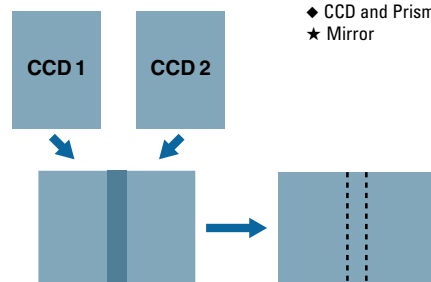
Capture every detail with unsurpassed digital image quality.

■ Hybrid Seamless Imaging System (Dual CCD)

Minolta's new imaging system dramatically raises the performance standard for compact digital SLRs. It allows the Dimage RD 3000 to deliver an ultra-high resolution of 2.7 million pixels (1,360 x 1,984) for sharp, clear prints to as large as 11.5 x 16.8 cm size at 300 dpi. The system employs two 1.5 million pixel CCDs with a half mirror prism. The prism splits the image into left and right halves, each of which is projected onto its own CCD. The two images are then seamlessly rejoined by Minolta's Image Stitching technology, becoming a single 2.7-million pixel high-resolution, high-quality image. An additional benefit of the compact relay optics is a smaller camera body.



◆ CCD and Prism
★ Mirror



Infrared Reduction Mirror

A three-mirror system effectively blocks out infrared light without affecting the CCD's visible light sensitivity.

Low-Pass Filter

This unique relay optical system allows light to pass through a low-pass filter at the optimum angle to suppress rainbow moiré artefacts to a minimum.

■ Interchangeable lenses add to overall performance

A number of high quality interchangeable lenses, especially V 17mm f/3.5 RD, significantly enhance the overall performance capabilities of the Dimage RD 3000. Through the use of such features as an aspheric lens for size reduction and aberration compensation, Minolta has achieved high resolutions to provide outstanding image clarity.



V 22 – 80mm
f/4 – 5.6



V 28 – 56mm
f/4 – 5.6



V 80 – 240mm
f/4.5 – 5.6 Apo



V 50mm
f/3.5 Macro



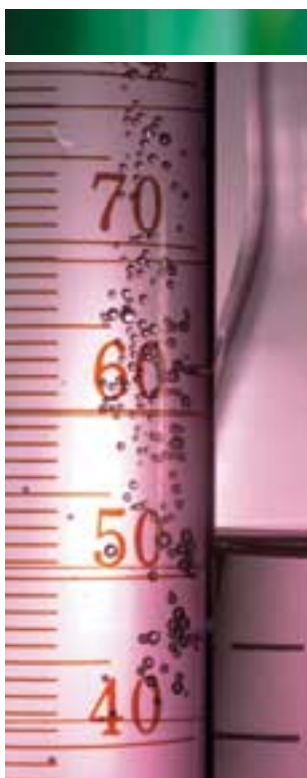
V 17mm f/3.5 RD
Dedicated for RD 3000

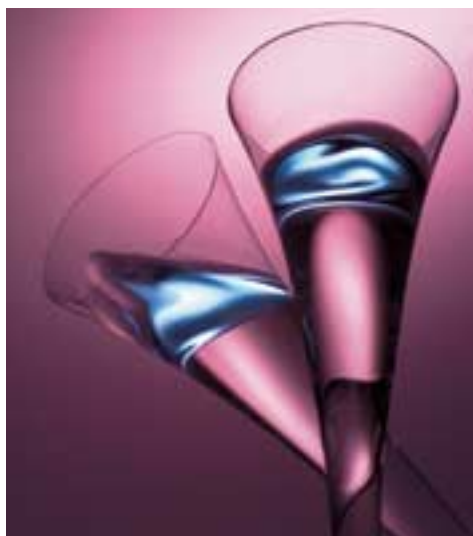
• Effective aperture range: f/6.7 – 22

• Focal length: approx. 1.5 times longer when compared to 35mm-film usage

■ Versatile white balance settings

You can choose from among three types of white balance settings. Auto activates a sensor that detects the colour temperature of the light source and adjusts the setting. Manual offers Daylight, Tungsten and Flash modes. In addition, the Custom setting allows you to recalibrate the white balance set by the Auto mode.





Superb SLR Functionality

The Dimâge RD 3000 gives you the functionality and operational ease you expect from a high quality SLR. Its wide range of sophisticated control features ensures that you can set the camera to match a variety of shooting conditions and objectives. Buttons are grouped according to function and positioned for convenient operation.

- Versatile AF system provides a wide focus area and includes predictive focus control for fast-moving subjects and manual focusing for fine adjustments.
- Four autoexposure modes: P/A/S/M
- Four drive modes: single, continuous (approx. 1.5 frame/s up to 5 frames), 10-s self-timer, remote release
- Accurate metering with choice of 14-segment honeycomb-pattern metering and spot metering
- Exposure and flash compensation (+/-3EV)
- Acute-matte focusing screen
- Informative viewfinder displays
- PC-terminal for connection of external flash units



Names of Parts

- 1 Dial
- 2 Shutter-release button
- 3 Remote-control receiver
- 4 Self-timer lamp
- 5 White-balance sensor
- 6 Strap eyelet
- 7 Battery-chamber cover
- 8 Lens release
- 9 Busy lamp

- 10 Quick View button
- 11 Viewfinder
- 12 Eyepiece hood
- 13 Menu button
- 14 Spot / AE lock button
- 15 UP button
- 16 Card-chamber door
- 17 LCD monitor
- 18 Set button

- 19 DOWN button
- 20 DC terminal
- 21 Strap eyelet
- 22 White-balance button
- 23 Counter button
- 24 Accessory shoe
- 25 Program-reset button
- 26 Exposure-mode button
- 27 Quality-select button

- 28 Drive-mode button
- 29 Data panel
- 30 Control dial
- 31 Control dial lock
- 32 Strap eyelet
- 33 Flash-compensation / Aperture-select button
- 34 Clock battery cover
- 35 PC terminal

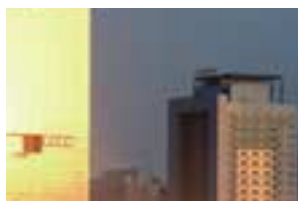
- 36 Diopter-adjustment dial
- 37 Exposure-compensation button
- 38 SCSI connector
- 39 Connector cover
- 40 Video-out terminal

Designed for sure handling and maximum convenience.



■ Wide viewing angle

With conventional digital SLRs that employ smaller CCDs, achieving a wide viewing angle has been difficult (large CCDs would make the camera too bulky). The Dimâge RD 3000, however, uses Minolta's Hybrid Seamless Imaging System (Dual CCD) with compact relay optics and V-lenses to achieve a wide viewing angle. Even with its compact body, the camera's aspect ratio is approximately 2:3 (vertical:horizontal), the same as a conventional 35mm camera. With the **V 17mm f/3.5 RD**, a wide-angle lens developed exclusively for the RD 3000, viewing angle becomes even wider — ideal for studio photography with its approx. 25mm focal length (35mm film equivalent).



RD 3000



Conventional models with small CCD

■ Compact, durable body is a pleasure to handle

Its light, compact design makes this camera ideal for both handheld and mounted shooting, and the flat bottom adds extra convenience. Although lightweight (approx. 1 kg), the camera body is sturdy and durable, with tough magnesium alloy exterior that provides protection from shocks without adding weight. The interior is reinforced with stainless steel. A strong metal lens mount ensures stable mounting of the lens.

■ 5.1 cm TFT monitor with video output

The 5.1 cm TFT LCD colour monitor on the rear of the camera provides high quality viewing of captured images and a variety of data. In the Rec-after-View mode, you can see the image you've just shot. Pressing the Quick View button displays the recording data, and when the Menu button is pressed in the Play mode, a menu of various settings appears. PAL video output allows you to view the recorded images on a TV or record them on a VCR.

■ Convenient interfacing with your computer

- Compatible with **CompactFlash Card Type I and Type II**.
With IBM Microdrive (340 MB), up to 44 images can be stored as uncompressed data.
- Easy-to-use **Digita Desktop™** host software is compatible with Windows 98/95/NT4.0 and MacOS.
- **JPEG (Exif2.0)** image file formatting is employed and for higher quality images **TIFF (Exif2.0)** is also available in Super Fine mode. Both can be opened with Adobe Photoshop and other common image manipulation software.
- **SCSI-II** interface ensures fast image transfer and enables remote shutter release from the computer.

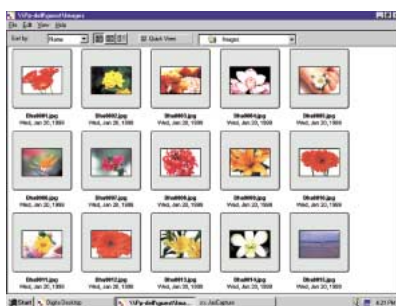
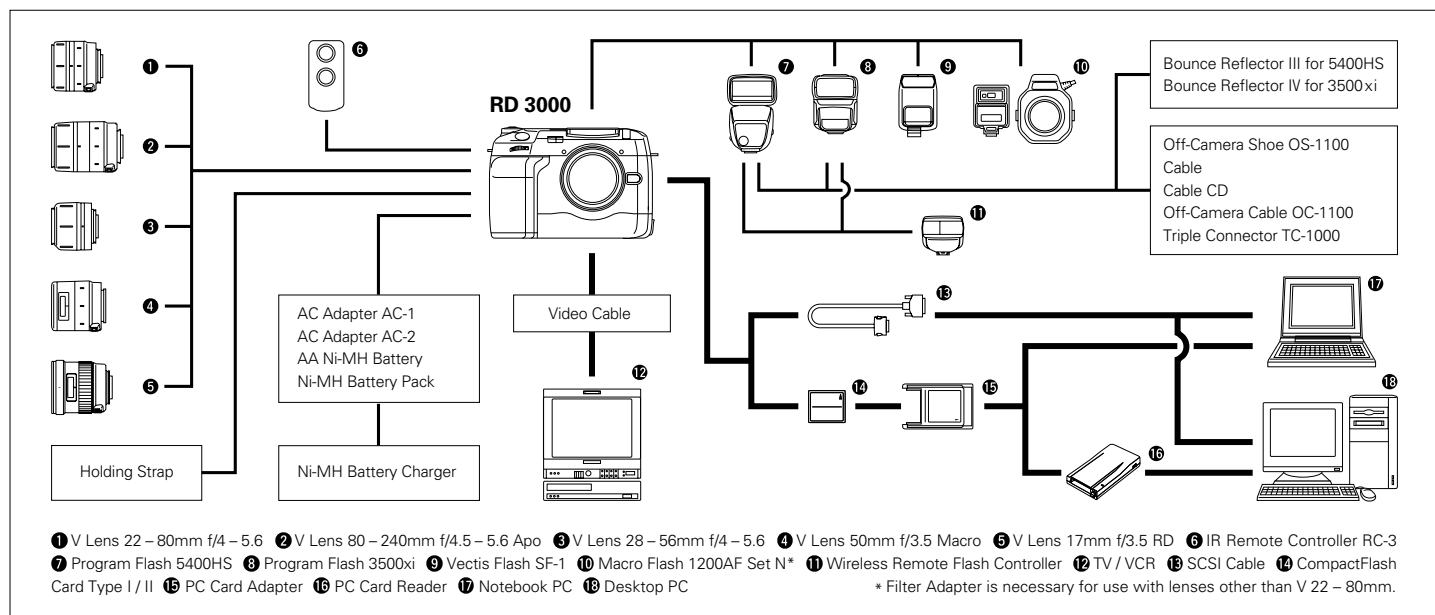


Image manipulation of pictures on left-hand page (by Adobe Photoshop)

SYSTEM CHART – Wide range of interchangeable accessories



The V 56 – 170mm f/4.5 – 5.6, V Reflex 400mm f/8 and V 25 – 150mm f/4.5 – 6.3 lenses can be attached to the RD 3000, but may not perform to 100% of their capabilities.

SPECIFICATIONS

Type	SLR Digital camera with interchangeable lens system
Lens mount	Minolta V mount
Image sensor	1/2 type progressive CCD with 1,500,000 pixels x 2
Final resolution	Approx. 2,700,000 pixels
Image size	1,984 x 1,360 pixels
Image capturing system	Hybrid Seamless Imaging System (Dual CCD)
File format	JPEG (Exif2.0), TIFF (Exif2.0)
Storage medium	CompactFlash Card Type I and II
Image compression ratio	SUPER FINE (TIFF): uncompressed, FINE (JPEG): approx. 1/5, STD. (JPEG): approx. 1/10, ECON. (JPEG): approx. 1/15
Storage capacity* (30 MB CompactFlash Card)	SUPER FINE: 3 images, FINE: 17 images, STD.: 33 images, ECON.: 52 images * Based on standard image-file size; the size differs depending on the subject.
LCD monitor	5.1 cm TFT LCD monitor made of low-temperature polysilicon
AF system type	Minolta's TTL (through-the-lens) phase-detection system with one CCD line sensor; Focus mode: automatic selection between single frame and continuous drive; auto / manual focus (selectable on the lens), AF control: predictive focus control for moving subjects
Metering system	TTL type, 14-segment Honeycomb-pattern metering / spot metering selectable; Range: 14-segment Honeycomb-pattern metering: EV 3 – 20, Spot metering: EV 6 – 20
Exposure modes	Programmed AE (P mode), Aperture-priority mode (A mode), Shutter-priority (S mode), Manual exposure (M mode) +/- 3 EV (in 1/2 EV increments)
Exposure compensation	CCD electronic control and vertical-traverse focal plane shutter; Range: P/S/A mode: 1/2000 – 2 s, M mode: 1/2000 – 30 s*;
Shutter	Flash sync: 1/125 s or slower * To avoid possible image deterioration due to increased noise, exposure of more than two seconds for single image is not recommended.
Sensitivity	ISO 200 (Gain up allows ISO as high as 800, with some increase in noise.)
White balance	User-selectable white balance settings: Auto (outer metering), Manual (outdoor, indoor, flash), Custom (one-push auto)

Flash	External flash available (optional), Wireless / remote off-camera flash control available
Viewfinder	SLR type, TTL (through-the-lens) relay-optical finder, Field of view (vertical x horizontal): approx. 94% x 95%, Magnification: 0.8X
Drive mode	Single mode, Continuous mode: approx. 1.5 frames per s (in 1,984 x 1,360 pixels, up to 5 frames), Remote release and Self-timer available
Interface	SCSI-2, Video output, Accessory shoe: Minolta standard shoe, PC terminal: compatible with positive and negative polarities, IR Remote control: RC-3
Power source	AA Ni-Cd x 4 or AA Ni-MH x 4 batteries, AC adapter
Dimensions (W x H x D)	150 x 101 x 117 mm
Weight (without batteries)	Approx. 1 kg
Standard accessories	AC Adapter, Ni-MH batteries, Ni-MH charger, SCSI Cable, Video Cable, CD-ROM, Holding Strap

Specifications and accessories are based on the latest information at the time of printing and are subject to change without notice.

System Requirements

	IBM PC/AT compatible*	Macintosh
CPU	Intel Pentium 90MHz or higher	PowerPC only
Operating system	Windows 95 / Windows 98 / Windows NT 4.0 / Windows Me	MacOS 7.6.1 – 8.6 system (QuickTime 2.5 or later is required. QuickTime 3.0 is required for Slide Show.)
Memory	Min. 16 MB of RAM for Windows 95 / 98 / Me, Min. 32 MB of RAM for Windows NT 4.0	Min. 16MB
Hard disk space	32 MB or larger	32 MB or larger
Monitor	Min. VGA (640 x 480 pixels), capable of displaying at least 256 colours. 32,000 colours or more is recommended.	Min. 13 type (640 x 480 pixels) monitor capable of displaying at least 256 colours. 32,000 colours or more is recommended.

* Recommended SCSI board: AHA-2940U2W / 2940UW / 2940U / 2940AU / 2940 / 2930C / 2930U / 2930U2 / 2920C / 2910B / 8945 / 1540CP / 1520B / 1510B, AVA-2904E / 2902E / 1505AE

- Dimäze and RD are trademarks or registered trademarks of Minolta Co., Ltd.
- Windows is a trademark or registered trademark of Microsoft Corp.
- Macintosh and QuickTime are trademarks or registered trademarks of Apple Computer Inc.
- Intel and Pentium are trademarks or registered trademarks of Intel Corp.
- Digita Desktop is a trademark or registered trademark of FlashPoint Technology, Inc.
- Adobe Photoshop is a trademark or registered trademark of Adobe Systems Inc.
- All other brand and product names are trademarks or registered trademarks of their respective owners.

Minolta Co., Ltd.

3-13, 2-Chome, Azuchi-Machi, Chuo-ku, Osaka 541-8556, Japan

Minolta Europe GmbH

Minoltaring 11, D-30855 Langenhagen, Germany

Minolta (UK) Ltd.

Rooksley Park, Precedent Drive, Rooksley, Milton Keynes, MK13 8HF, England

(Photo Operations)

Photopak Sales

241 Western Industrial Estate, Naas Road, Dublin 12, Ireland

Minolta Portugal Limitada

Av. do Brasil 33-A, P-1700 Lisboa, Portugal

**Minolta homepage address: www.dimage.minolta.com
www.minoltaeurope.com**

