

## SAVE GREEN this spring!



**NEW**  
See page 18



### Keep a Low Profile

Dayton Audio Neodymium  
Low-Profile Subwoofers

### HDMI Headquarters!

All Lengths—All Types  
at Great Prices!

Page 7



**Save On  
HDMI!**



### Great Sound, Super Price!

Peerless SDS  
6-1/2" Woofer 4 Ohm

**\$10<sup>00</sup>**  
Compare to \$40



Page 20

Peerless

### Turn Up The Heat!

Variable Temperature  
Soldering Station



**\$1200**  
EACH  
#374-100

**DIY**

P. 16

The  
Copper  
Speaker Project







Parts Express has provided electronic parts and accessories to the audio/video industry since 1986. We are proud to offer our customers—from sound technicians to audio enthusiasts—the finest audio and video products for quality home and professional installations.

## Buying From Parts Express Is Easy

### parts-express.com

Detailed product descriptions, user product reviews, diagrams, and a do-it-yourself resource area are online at parts-express.com. FedEx orders placed before 4:00 PM ET are shipped the same day.

1



### Call Center

Trained and dedicated representatives are available via phone, email, or live chat to quickly and accurately process orders, answer questions, provide pricing and availability, and send you our latest catalogs and sales flyers.

### PE Wholesale

Are you an OEM, installer/integrator, retailer, or in the gaming or amusement park business? We offer personalized service, exclusive discount pricing, outstanding tech support, and more. Go to wholesale.parts-express.com or call 1-866-366-4909.

2



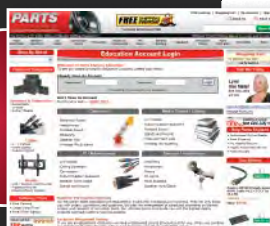
### Technical Support

Our highly regarded technical support team has hands-on product experience and technical electronics knowledge. For assistance with your audio/video projects call 1-800-338-0531 or email tech@parts-express.com or visit our website to chat live with our techs!

### EDU Sales

Universities, Colleges, K-12, and Technical Schools—we have a program just for you! Plus, we now offer discounted pricing for all EDU accounts. Go to education.parts-express.com or call 1-866-366-4909 ext. 186.

3



### \*Get It Shipped Fast. Get It Shipped Free.

- Free economy shipping (to a single address) on most orders with a merchandise total of over **\$98**.
- Available only to **online** orders (phone and mail orders not eligible) shipping to destinations within the **Contiguous U.S.** (excluding APO/FPO).
- Applies to **retail internet, catalog, and sale flyer priced merchandise**.
- Items not economy shippable due to weight, cube, or aerosol restrictions do not qualify for Free Shipping Every Day. Some large, heavy, or bulky items may require additional shipping charges and are noted as such on the product detail page and at checkout.
- Please allow 5-10 days for delivery.
- Free Shipping Every Day eligibility will not apply if items are cancelled which reduce the merchandise order total below the minimum order requirement.
- Free Shipping Every Day terms and conditions are subject to change without notice.

### Showroom

Come visit us at our showroom:

725 Pleasant Valley Dr.  
Springboro, OH 45066  
937-743-3000 ext. 131



### Catalog

Visit our website now to order your free copy or to browse our easy to use digital catalog.



### Home Audio/Video



# Featured Products

## QSC K Series Active Loudspeakers

Page 29



**QSC**

*The new standard in lightweight active PA speakers*

## Dayton Audio In-Wall Speakers

Page 4

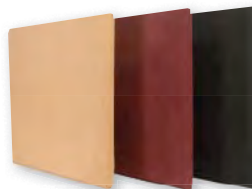
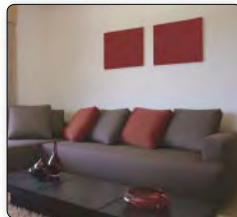


**DAYTON AUDIO**

## Sonic Barrier AcT Acoustic Wall Panels

Page 10

**sonic barrier**



## Dayton Audio Satin Nickel Speaker Spike Sets

Page 18



**DAYTON AUDIO**

## New Products

- Pg. 5** Dayton Audio Shadow Sound System
- Pg. 6** Tilting TV Wall Mounts
- Pg. 7** Dayton Audio High-Speed HDMI Cables
- Pg. 10** Goo Systems Video Projection Screen Paint
- Pg. 14** Phenolic Ring Tweeters
- Pg. 18** Dayton NS Series Low Profile Neodymium Subwoofers
- Pg. 29** Peavey IPR™ Series Lightweight Amplifiers

## Factory Buyouts

- Pg. 4** Allison Powered Subwoofers
- Pg. 8** RCA D975M RG-6 Direct Burial Cable 75 ft.
- Pg. 9** Belkin Universal USB Charging Kit
- Pg. 12** Philips Flashing Telephone Ringer
- Pg. 15** Subwoofer Input/Output Terminal
- Pg. 20** Peerless SDS 6-1/2" Woofer 4 Ohm
- Pg. 21** 5-1/2" and 6-1/2" Poly Cone Shielded Woofers 12 Ohm

## Parts & Accessories

## Speaker Building

## Pro Audio

## Car Audio

**12**



**14**



**24**



**30**





## Dayton Audio Elite Series Speakers

- Full line of in-wall and ceiling speakers designed by renowned industry engineers
- Paintable frames and mesh grills allow for blending with any decor
- Mounting systems allow for fast and easy installation



**Special**  
**25% OFF**

#300-360

#300-372

#300-362

#300-364

Choose the Dayton Audio Elite Series for well-engineered, high performance architectural audio in-wall and ceiling speakers! The Elite Series from Dayton Audio offers selection, sound and features normally found on higher priced lines. Engineered with accurate quasi-open-slope electrical filters and high power voice coils, the Elite Series provides a smooth, wide frequency response to below the 60 Hz range. When quality and sound experience merge with affordability, you've found the Elite Series from Dayton Audio.

**Specifications:** • Multi-polymer woofers • Swivel tweeters  
• Impedance: 8 ohms.

Part #	Mfg. #	Woofer	Tweeter	Power Handling RMS/Max (Watts)	Frequency Response (Hz)	List Price	Regular Price	Special Price
<i>In-Wall</i>								
<b>300-372</b>	ES80W	8"	1" Silk dome	60/125	48-20,000	\$149.99	<b>\$112.50</b>	<b>\$84.00</b>
<b>300-370</b>	ES65W	6-1/2"	1" Silk dome	40/80	55-20,000	119.99	<b>87.66</b>	<b>65.00</b>
<i>Ceiling/Coaxial</i>								
<b>300-366</b>	ES80C	8"	1" Silk dome	40/80	55-20,000	\$139.99	<b>\$107.14</b>	<b>\$80.00</b>
<b>300-362</b>	ES65C	6-1/2"	1" Silk dome	40/80	55-20,000	109.99	<b>84.42</b>	<b>63.00</b>
<b>300-360</b>	ES50C	5-1/4"	3/4" Silk dome	30/60	59-20,000	79.99	<b>61.12</b>	<b>45.00</b>
<i>Ceiling/Stereo</i>								
<b>300-368</b>	ES80CS	8"	1" Polycarbonate	60/120	48-20,000	\$89.99	<b>\$64.94</b>	<b>\$48.00</b>
<b>300-364</b>	ES65CS	6-1/2"	1" Polycarbonate	40/80	55-20,000	79.99	<b>58.44</b>	<b>43.00</b>

## MTX Home Theater Speaker System

Power yourself into an expansive 5.1 surround sound experience. Four matched speakers reproduce the 3-dimensional sound envelope with 3" paper cone midranges and 1/2" balanced dome tweeters. The MTM center channel pulls you into the dialog, making you feel one with the characters on screen, with two 3" paper cone midranges and a 1/2" balanced dome tweeter. All the while a 120 watt amplifier drives a high-excursion woofer for low frequency effects you can feel to your core. Feel the power while you experience the movie.



**Special**

#301-860 ..... \$299.99 <sup>Regularly</sup> **\$249<sup>95</sup>** **\$225<sup>00</sup>** EACH

## Dayton Audio B652 6-1/2" 2-Way Bookshelf Speaker Pair

- Small size, profound performance!
- Black textured vinyl cabinet
- Removable grill
- Excellent clarity and detail

For use in any audio application, the Dayton Audio B652's deliver great audio at an affordable price. Perfect for offices, dorm rooms, apartments, or any other living area. The two-way design features a 6-1/2" polypropylene cone and a 5/8" polycarbonate, ferrofluid cooled tweeter to accurately reproduce audio from 70 through 20,000 Hz.

**Specifications:** • Woofer: 6-1/2" polypropylene • Tweeter: 5/8" polycarbonate ferrofluid cooled • Power handling: 40 watts RMS/75 watts max • Impedance: 8 ohms • Frequency response: 70-20,000 Hz • Sensitivity: 87 dB 1W/1m • Dimensions: 11-13/16" H x 7-1/16" W x 6-7/16" D • Sold in pairs.



**Special**

#300-652..... \$49.99 <sup>Regularly</sup> **\$32<sup>50</sup>** **\$25<sup>00</sup>** PAIR

## AudioSource PSW110 10" Powered Subwoofer

**AudioSource®**

- High-power low-distortion 125W amplifier
- 10" mineral filled polypropylene subwoofer
- Front panel 40-200 Hz crossover control and gain adjustment
- Removable feet for cabinet installation
- Signal sensing power on and 180° phase switch

**Special**



#302-628..... \$259.99 <sup>Regularly</sup> **\$159<sup>98</sup>** **\$99<sup>00</sup>** EACH

## Allison Powered Subwoofers

- Adjustable crossover 40 to 140 Hz
- High output, bass-reflex design
- Flared port for reduced chuffing
- Solid 3/4" MDF cabinet construction
- Front-firing subwoofer

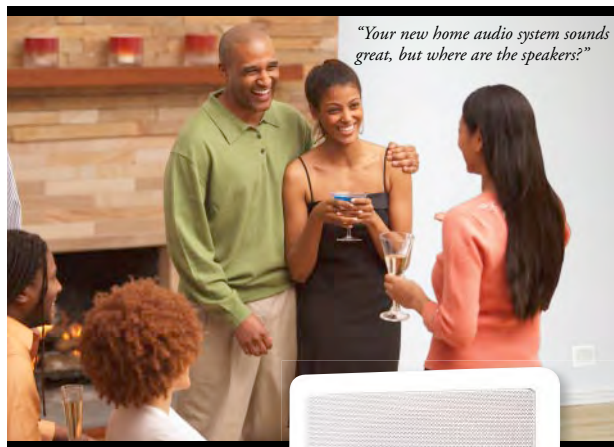


Only the best possible components were considered for use in the construction of this subwoofer, and each subwoofer has been designed to create amazing low frequency performance at a price that's more affordable than many "high-end" subwoofers.



**BUYOUT**

Part #	Mfg. #	Description	List Price	Regular Price	Buyout Each
<b>309-176</b>	AL8	8" 75W subwoofer	\$299.99	<b>\$248.80</b>	<b>\$150.00</b>
<b>309-177</b>	AL10	10" 125W subwoofer	399.99	<b>348.80</b>	<b>199.00</b>



New

**SHADOW**  
SOUND  
by dayton audio



## Great sound from where you least expect it...

Your guests will never be able to tell where the music is coming from. The new Dayton Audio Shadow Sound system provides beautiful, rich sound while remaining nearly undetectable. Each system includes two specially engineered, strategically placed satellite speakers, and a high performance subwoofer, all specifically designed for near floor placement. The low-mounted Shadow Speakers blend in with a room's electrical outlets in a manner so aesthetically pleasing they almost seem invisible.



One Shadow Sound system is all that is required for a small to medium sized room (up to 300 sq. ft.). For larger rooms, or in a room where high-output TV sound is desired, add additional satellites to achieve evenly dispersed coverage.

- Nearly undetectable whole house audio. Can you find the one in the photo above?
- Extremely high-quality sound (35 Hz -18,000 Hz)
- Satellite speakers use exclusive Tang Band neodymium drivers
- Creates a seamless, lush sound environment
- Aesthetically appealing—your wife will love it!
- Stealthy yet powerful 8" dual coil in-wall subwoofer
- Easy to install in new or existing homes

**Specifications:** • Frequency response: 35-18,000 Hz • SPL: 88 dB 1W/1m • Power handling: 100 watts max • Impedance: 8 ohms per channel • Subwoofer dimensions: 10-1/8" x 10-1/8" x 3-13/16" deep • Satellite dimensions: (square): 5" x 5" x 1-3/4" deep, (round): 5-1/2" diameter x 1-5/8" deep.

### Complete System—Includes one sub and two satellites

#300-482 (SS8-3S square system)

#300-484 (SS8-3R round system)

..... \$179.99<sub>LIST</sub> **\$139<sup>80</sup>** (1-2) **\$125<sup>82</sup>** (3-UP)

### Additional Satellites—Sold individually

#300-486 (SS-3S square satellite)

#300-488 (SS-3R round satellite)

..... \$37.99<sub>LIST</sub> **\$28<sup>88</sup>** (1-2) **\$25<sup>67</sup>** (3-UP)

## Dayton Audio DTA-100 100 Watt Class T Digital Amplifier



New



- Up to 50W per channel continuous into an 8 ohm load
- Audiophile quality sound with less than 0.01% THD @ 30W
- 1/4" headphone jack
- Front-mounted 3.5 mm input for quick connection of portable audio devices
- Compact extruded aluminum housing with thick black anodized faceplate
- Rear mounted RCA type input for permanent connection of larger audio devices
- Short circuit, thermal and overload protection
- World compatible 24 VDC switch-mode power supply included

The DTA-100 utilizes the Tripath TK2050 chipset that provides 50W continuous power per channel (100W total) into an 8 ohm load. Class T amplifiers offer the audio fidelity of a Class AB amplifier while providing the power efficiency of a Class D.

The DTA-100 also has a 1/4" stereo jack that allows connection of larger home and studio style headphones. An adapter is also provided so smaller 3.5 mm personnel style headphones can be used.

**Specifications:** • Power output: 2 x 50 watts RMS (into 8 ohms @ 3% THD), 2 x 30 watts RMS (into 8 ohms @ 0.01% THD) • Signal-to-noise ratio: greater than 103 dB • Frequency response: 20-20,000 Hz • Efficiency: > 85% • Dimensions: 2" H x 3-3/8" W x 5-5/8" D. • Weight: 2.65 lbs.

#300-383..... \$129.99<sub>LIST</sub> **\$99<sup>90</sup>** (1-5) **\$89<sup>50</sup>** (6-UP)



## Dayton Audio APA150 150W Power Amplifier

Special



- Toroidal power supply
- Useful as a stereo or subwoofer amplifier
- Full-range line-level outputs
- High current, discrete output transistors
- Adjustable 50-150 Hz low pass crossover
- Gold-plated 5-way binding posts that accept up to 8 AWG wire

Amplifiers today need to be multi-faceted to keep up with the task at hand. Versatility is the foundation upon which the Dayton Audio APA150 is based. Configured in stereo mode, amplification is provided to a pair of speakers for stereo or surround playback. Select bridge-mono mode and the APA150 is configured for powering a center channel speaker, or a subwoofer/tactile transducer when used with the on-board low pass filter. Full-range line-level outputs allow for daisy chaining amplifiers for a multi-room whole house audio system or for bi-amp applications. A smaller chassis consumes less space than conventional amplifiers making placement options virtually endless.

**Specifications:** • Measured power output: 2 x 75 watts RMS (into 4 ohms @ less than 0.01% THD) • Signal-to-noise ratio: greater than 100 dB • Class A/B design topology • Input impedance: 47k ohms • Auto-on sensitivity: 3 mV • Voltage requirement: 120/230 VAC, 60/50 Hz • Dimensions: 5-1/2" H x 6" W x 11-1/2" D. • Weight: 13 lbs.

#300-812..... \$209.00<sub>LIST</sub> Regularly **\$158<sup>88</sup>** **\$139<sup>00</sup>** EACH



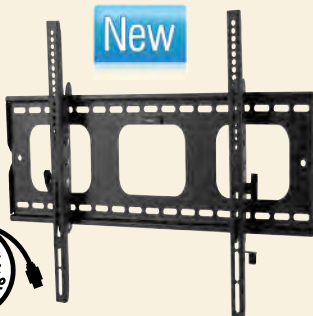


Shadow Mounts from Dayton Audio place the focus on your flat panel television—not the mount. By using an inconspicuous flat black finish, the mount virtually disappears behind the display.

**Shadow Mounts**  
by dayton audio

## Tilting TV Wall Mounts

- Easy adjustable  $\pm 15^\circ$  tilt places screen in the optimum viewing position
- Solid steel construction—supports up to 175 lbs.
- Quick installation, instructions and hardware included
- Universal mounting fits most screens



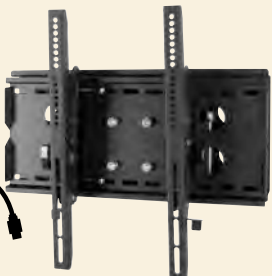
Part #	Mfg. #	Fits	List Price	Price (1-3)	Price (4-UP)
182-320	LCD37-TM	23" - 37"	\$38.99	\$29.80	\$24.90
182-322	LCD60-TM	32" - 60"	45.99	34.80	29.90

*The Dayton Difference!*



## Articulating TV Wall Mounts with Tilt

- Unobtrusive black design shadows most HDTVs perfectly
- Extends up to 11.8" from the wall
- $\pm 40^\circ$  of left to right swivel adjustment
- $\pm 15^\circ$  of tilt adjustment
- Durable steel construction
- Easy to install, mounting hardware included
- Universal mounting—fits most screens



Part #	Mfg. #	Fits	List Price	Price (1-3)	Price (4-UP)
182-324	LCD37ARM	23" - 37"	\$95.99	\$73.10	\$69.45
182-326	LCD60ARM	32" - 60"	103.99	79.83	75.83

## Low Profile Fixed TV Wall Mounts

- Durable steel construction
- Easy to install, mounting hardware included
- Universal mounting—fits most screens
- Slim design places TVs less than 1" off the wall



Part #	Mfg. #	Fits	List Price	Price Each
182-350	LCD2337-FM	23" - 37"	\$57.99	\$27.88
182-352	LCD3260-FM	32" - 60"	68.99	31.88

**Sanus Systems**

**Special**

## Sanus Tilt LCD/Plasma Mounts



#185-426



#185-432

- Solid steel construction
- VirtualAxis™ tilting system
- Easy to install
- Mounting hardware included
- Available in silver or black

### Specifications:

**VMPL50:** • Max weight: 130 lbs. • Mounting: Universal • Dimensions: 18-1/2" H x 29" W x 2-1/2" D.

**VMPL3:** • Max weight: 280 lbs. • Mounting: Universal including VESA 600 • Dimensions: 17" to 27-1/2" H x 27" to 42-1/4" W x 2-1/2" D.

Part #	Mfg. #	Size	Tilt	Color	Regular Price	Special Price
185-424	VMPL50S	30"-50"	24°	Silver	\$69.58	CALL
185-426	VMPL50B	30"-50"	24°	Black	69.58	CALL
185-432	VMPL3S	27"-84"	18°	Silver	147.69	CALL
185-434	VMPL3B	27"-84"	18°	Black	147.69	CALL

## Sanus VMAA18 30" - 50" LCD/Plasma Full Motion-Mounts

- Fits most flat panel TVs up to 50"
- Supports up to 130 lbs.
- Durable anodized finish



The VMAA18 is a full motion wall mount designed for large LCD and plasma TVs. Virtual Axis™ tilting system provides tilt ( $+5^\circ$  to  $-15^\circ$ ), swivel ( $\pm 90^\circ$ ), pan, and extension from 3-1/4" to 19-3/4", all with the touch of a finger. Universal mounting pattern fits virtually any 30" - 50" LCD or plasma TV up to 130 lbs. Mounting hardware included.

#185-456 (Silver)

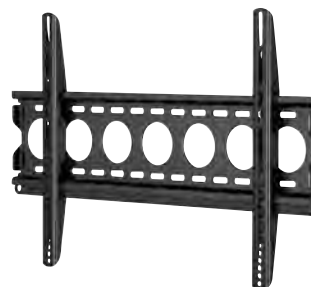
#185-458 (Black) ..... \$399.99<sub>LIST</sub>

Regularly  
**\$244<sup>24</sup>**

**SPECIAL**  
LOG IN OR CALL

## Sanus VMPL250 30" - 50" Fixed LCD/Plasma Mounts

- Fits most LCD flat panel TVs
- TV/monitor mounted is 1-1/4" from wall
- Supports up to 130 lbs.



A low-profile design positions the TV only 1-1/4" from the wall. The VMPL250 accommodates most 30" - 50" flat panel LCD and plasma TVs weighing up to 130 lbs. Dimensions: 29" W x 1-1/4" D x 18-1/2" H.

#185-410 ..... \$119.99<sub>LIST</sub>

Regularly  
**\$49<sup>00</sup>**

**SPECIAL**  
LOG IN OR CALL

Visit [parts-express.com](http://parts-express.com) to see discounted pricing on these Sanus items

Sanus

## AR Pro II Component Video Cables

- RCA 8-segment connectors with split center pins for a superior fit and signal transfer
- Nitrogen injected dielectric with centered conductors for improved picture performance



**Special**

Part #	Length	Regular Price	Special Price
181-878	3 ft.	\$45.40	\$39.00
181-880	6 ft.	54.48	49.00
181-882	12 ft.	63.56	57.00
181-884	25 ft.	79.85	71.50

## AR Pro II RCA Audio Cables

- Precision machined RCA 8-segment connectors with split center pin for improved fit and signal transfer
- Twisted pair balanced and directional noise drain construction for low noise and accurate sound reproduction



Part #	Length	Regular Price	Special Price
181-844	3 ft.	\$20.34	\$18.30
181-848	6 ft.	36.30	32.60

## AR Pro II RCA Subwoofer Cables

- RCA 8-segment connectors
- Split center pin for improved fit and signal transfer
- Twisted pair balanced and directional noise drain construction for low noise and accurate sound reproduction



Part #	Length	Regular Price	Special Price
181-856	15 ft.	\$31.76	\$28.50
181-858	25 ft.	35.60	32.00

## AR Pro II Coaxial Digital Audio Cables

- Nitrogen injected dielectric with centered solid conductor maintains proper 75 ohm impedance for improved picture performance



Part #	Length	Regular Price	Special Price
181-866	3 ft.	\$18.14	\$16.30
181-868	6 ft.	20.34	18.30

## AR Pro II Optical Digital Audio Cables

- Toslink optical connectors create a superior fit for improved performance
- High-grade optical fiber, engineered to meet the high speed signal demands of digital audio components



Part #	Length	Regular Price	Special Price
181-874	6 ft.	\$27.22	\$24.50
181-876	12 ft.	36.30	32.65

## RapidRun 42223 Digital Voltage Inserter

At times, a source device (cable box, DVD player, video game system) will not have enough power dedicated to the HDMI output. This will cause a voltage drop and the video quality is affected, or worse, there is no video at all. This voltage inserter solves the problem by isolating the power from the source device, and provides 5 VDC, 1000 mA dedicated power to assure the crisp, clean signal that is expected from high definition equipment.

#183-817 ..... \$29.99<sub>LIST</sub> **\$25<sup>95</sup>** (1-3) **\$24<sup>64</sup>** (4-UP)



**New**



## Dayton Audio High-Speed HDMI Cables

**New**



- High performance cables that don't break the bank
- Supports resolutions up to 1600p, refresh rates up to 120 Hz, and 48-bit Deep Color
- CL3-rated jacket for permanent in-wall installations
- ATC certified HDMI v1.3b Category 2 for speeds up to 340 MHz (10.2 Gbps)
- HDCP compliant and also supports Lip Sync audio/video synchronization
- 24 AWG conductors ensure video transmissions over long runs



Part #	Mfg. #	Length	List Price	Price (1-3)	Price (4-UP)
181-808	HR13HG10	10 m (33 ft.)	\$33.99	\$26.15	\$24.90
181-810	HR13HG15	15 m (49 ft.)	48.99	37.05	35.29
181-812	HR13HG20	20 m (66 ft.)	62.99	47.93	45.64

## Dayton Audio High-Speed CL3-Rated HDMI Cables

- Supports resolutions up to 1600p, refresh rates up to 120 Hz, and 48-bit Deep Color
- CL3-rated jacket for permanent in-wall installations
- ATC certified HDMI v1.3b Category 2 for speeds up to 340 MHz (10.2 Gbps)
- HDCP compliant and also supports Lip Sync audio/video synchronization



**25% OFF**

**Special**

Part #	Mfg. #	Length	List Price	Regular Price	Special Price
181-770	HR13C20.5	0.5 m (1.6 ft.)	\$6.99	\$4.90	\$3.65
181-772	HR13C21	1 m (3.3 ft.)	7.99	5.74	4.30
181-774	HR13C22	2 m (6.5 ft.)	9.99	7.67	5.75
181-776	HR13C23	3 m (9.8 ft.)	12.99	9.59	7.19
181-778	HR13C25	5 m (16.4 ft.)	17.99	13.83	10.35
181-780	HR13C27	7 m (23 ft.)	23.99	18.34	13.75
181-782	HR13C210	10 m (32.8 ft.)	33.99	25.66	19.25

## Dayton Audio High-Speed Flat HDMI Cables

- Supports resolutions up to 1600p, refresh rates up to 120 Hz, and 48-bit Deep Color
- Flat cable construction reduces cable footprint while reducing cross-talk
- ATC certified HDMI v1.3b Category 2
- HDCP compliant for protected content playback such as Blu-ray



Part #	Mfg. #	Length	List Price	Regular Price	Special Price
181-784	HF13C20.5	0.5 m (1.6 ft.)	\$12.99	\$9.82	\$7.35
181-786	HF13C21	1 m (3.3 ft.)	15.99	12.00	9.00
181-788	HF13C22	2 m (6.5 ft.)	21.99	16.81	12.60
181-790	HF13C23	3 m (9.8 ft.)	24.99	18.86	14.15
181-792	HF13C25	5 m (16.4 ft.)	41.99	32.04	24.00
181-794	HF13C27	7 m (23 ft.)	55.99	42.99	32.25
181-796	HF13C210	10 m (32.8 ft.)	79.99	60.99	45.75

## Dayton Audio HDEQ HDMI Stabilizer

- Passive device that corrects cable impedance mismatches
- Plug-and-play
- A simple quick fix for many HDMI problems
- Virtually eliminates screen sparkle (pixelation)



#181-764 ..... \$51.99<sub>LIST</sub> Regularly **\$15<sup>00</sup>** EACH



## Factory Buyouts! Available below original dealer cost!



### RCA Optical Cables

**\$350**  
EACH  
#249-230

3 ft.

Compare to \$16

**\$390**  
EACH  
#249-232

6 ft.

Compare to \$17

### RCA Component Video with Optical Cables

**\$350**  
EACH  
#189-257

6 ft.

Compare to \$8

**\$500**  
EACH  
#249-234

9 ft.

Compare to \$20

### RCA D975M RG-6 Direct Burial Cable 75 ft.

Engineered for both above ground and direct burial applications and designed for use indoors and out. Attached 17 AWG copper covered steel messenger wire can be used to support the cable for an aerial drop or can act as a ground wire. Pre-terminated with high-quality weatherproof F connectors at each end and one end includes a weather boot for added security.

**\$488**  
EACH  
#189-259

Compare to \$18

### RCA Antenna Satellite Diplexer Splitter

- DC passive on satellite port
- 40 to 2150 MHz bandwidth
- Ground port
- Waterproof housing

Allows off-air (UHF/VHF) or CATV and satellite (DSS) IF signals to be diplexed (combined) into one cable run to receiver. Use second unit to split the signals from the single coax cable run into the individual inputs needed for the receiver. Saves labor and cable costs.

**wow!**

**90¢**  
EACH  
#189-011

Compare to \$10

### RCA DT902AV 2-Way Audio Video Switch

Get the most out of your home entertainment system. Switch easily between your VCR, CD player, video game player, or DVD player.

**\$500**  
EACH  
#189-258

Compare to \$20

### RCA RD1163 CD/DVD Scratch Repair Kit

Repairs damaged CDs and DVDs (even video game discs) you had otherwise given up on.

Compare to \$15

**\$350**  
EACH  
#209-130

### Holland 2-Way RF Splitter with Two 4.75" Coaxial Cables

- Improved performance with cable modems
- Works with digital cable and off-air HDTV signals

**\$150**  
EACH  
#189-202

Compare to \$5

### 3.5 mm Stereo Headphone Extension 25 ft. Coiled

- Industry standard stereo audio 3.5 mm (1/8") extension
- Nickel plated connectors
- Molded strain relief extends cable life
- Remote locate a 3.5 mm port to anywhere—even another room
- Coiled cable

Compare to \$6

**\$290**  
EACH  
#249-030

### Belkin ActiFlex Hands Free Cell Phone Headset

- Just in time for hands-free cell phone laws
- Compatible with any phone with a universal 2.5 mm hands-free jack

**\$350**  
EACH  
#139-012

Compare to \$20



**BELKIN**

### Belkin Folio Case for iPod® Nano Black

- Case will hold an iPod Nano Generation 1 or any MP3 player or cell phone 3-3/4" H x 1-3/4" x 1" screen protector included

**BLOWOUT!**

**88¢**  
EACH  
#139-004

Compare to \$25





**Quantities are limited! Hurry while supplies last!**

### RCA Coaxial F Male-Male Cables

**\$3.75**  
EACH  
#189-256

**6 ft.**

Compare to \$9

**\$4.75**  
EACH  
#189-255

**12 ft.**

Compare to \$13



### RCA Wall Plates *RCA brand premium quality*

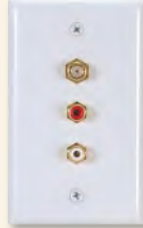
- Two gold-plated solder-type RCA jacks for L/R audio

**38¢**  
EACH  
Your Choice



#189-166  
Compare to \$4

- One gold-plated double-ended F-81 coax connector and two solder-type RCA jacks



#189-164  
Compare to \$5

### RCA HP242 Sport Neckband Headphones

- Over-the-ear design for a snug fit
- Interchangeable color caps
- High output drivers

**\$5.90**  
EACH  
#249-205

Compare to \$16



### Jensen JCDP12 12 Capacity CD and Player Storage Case

- Holds up to 12 CDs and a CD player
- Works great as a micro travel bag

**JENSEN®**

**\$4.00**  
EACH  
#249-200

Compare to \$15



### Belkin Universal USB Charging Kit

- Safely charges 5 VDC USB and Mini USB devices such as MP3 players, cell phones, video game controllers, PC accessories, and digital cameras
- Includes 12 VDC cigarette lighter to USB power adapter, 100-240 VAC to USB power adapter, and 36" USB A male to mini USB B male connection cable



**\$5.00**  
EACH  
#139-006

Compare to \$35

**BELKIN.**

### 3.5 mm Plug (4 Pole) to 3 RCA Plug A/V Cable 3 ft.

This high quality A/V patch cable is perfect for connecting your personal video player or camcorder to your receiver. This cable adapts from a 4 pole mini plug (video with right and left audio) to individual RCA plugs. Features color coded molded RCA plugs with built in strain relief. 3 ft. long.

**\$2.99**  
EACH  
#249-132



Compare to \$10

### Audio / Video Cable 8 ft.

Save money and installation time with this A/V cable. Stereo analog RCA audio cables are combined with a composite video cable for a simple all-in-one connections. 8 ft. long

**\$1.88**  
EACH  
#189-204

Compare to \$8



### 3.5 mm Stereo Male to 2 RCA Male Cable 6 ft.

- Adapts MP3 players and PCs to standard L/R audio format
- Can be used with AUX input on most aftermarket automotive head units
- Color coded for channel identification



**\$1.95**  
EACH  
#249-032

Compare to \$4

### 3.5 mm Stereo Male to Male Cable 6 ft.

- 3.5 mm male to male
- Nickel plated for a lifetime of use
- Molded strain relief protects delicate connections

**95¢**  
EACH  
#249-150

Compare to \$5



### Boston Acoustics LCAi220 2 x 20W Amplifier

- 2 x 20W Class AB in-wall amplifier
- Phoenix-type speaker terminals
- Operates on 12-16 VDC with front and rear power inputs
- Built-in high pass and low pass filters

**Boston**  
Boston Acoustics

**Closeout**  
**\$69.00**  
EACH

Regularly  
**\$99.80**

#309-040 Compare to \$350



### Mechanical Outdoor Timer with Photosensitive Control

- Automatically turns outdoor lights on at dusk, off at dawn
- Selectable power off of 2, 4, 6, or 8 hours after power on
- 1800W power rating (1000W Tungsten)

**\$9.00**  
EACH  
#189-084

Compare to \$25



**INTERMATIC®**

**Introductory  
Special!**



## Goo Systems Video Projection Screen Paint



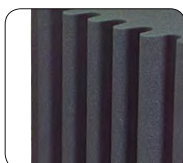
Screen Goo is a specially formatted, highly reflective acrylic paint, designed specifically for the video projection industry. Screen Goo acrylic paint allows one to transform any smooth paintable surface into a high performance projection screen. Screen Goo's performance reflects many years of research and development, and the precision production techniques of Tri-Art Manufacturing. It has the capacity to outperform most of the existing screen products in use today. Screen Goo is made from the highest grade acrylic available and contains no filler materials. Whether used in a professional or home situation its simple application, versatility, quality and variable gain characteristics are remarkable.



Part #	Mfg. #	Description	Color	Regular Price	Special Price
<b>Goo</b>					
200-100	4193	CRT basecoat screen paint 1000 mL	White	\$44.99	\$40.50
200-104	4179	Digital basecoat screen paint 1000 mL	Grey	44.99	40.50
200-106	4181	CRT topcoat screen paint 1000 mL	White	149.99	135.00
200-112	4813	Ultra topcoat screen paint 1000 mL	Grey	149.99	135.00
<b>Goo Kits</b>					
200-120	4778	CRT projection screen paint kit	White	229.99	205.00
200-124	4780	Digital projection screen paint kit	Grey	229.99	205.00
200-126	4852	Ultra projection screen paint kit	Grey	229.99	205.00
<b>Goo Accessories</b>					
200-128	4598	Flow release for spray guns		7.99	7.20
200-130	4604	Ultra screen border paint 250 mL	Black	11.99	10.80
200-132	4667	Roller refill		6.00	5.40
200-134	6555	Roller handle		7.99	7.20
200-136	4960	Flock tape 32 ft. x 2"		34.99	31.50

### Cascade Audio Corner Trap

Cascade ceiling corner traps eliminate unwanted reflections. Adding these room treatments effectively solves reflection problems, improving imaging and giving music a more realistic and detailed sound! Color: charcoal. Dimensions: 12" x 24".



#305-120..... \$64.99<sub>LIST</sub> **Regularly \$42<sup>96</sup>** **\$39<sup>00</sup> EACH**

### Save Big on Universal Remote Controls

**\$4<sup>00</sup>**  
EACH  
#189-056

**BUYOUT**

Compare to \$13



The 5-function remote control is compatible with Motorola 62XX series cable set-top boxes and can be programmed to operate other models including Motorola, Jerrold, Pace, Pioneer, Tocom, and Zenith set-tops. Program your remote to control four additional devices including a TV, DVD player, audio amplifiers and receivers, and VCRs.

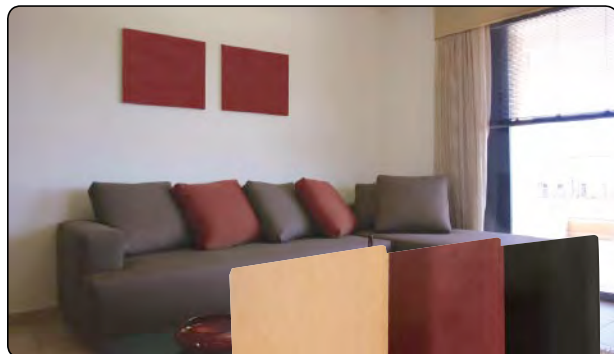
**\$3<sup>50</sup>**  
EACH  
#189-054



Compare to \$10

The 3-function remote control is compatible with Verizon FiOS TV service and can be used to control the FiOS set-top box and FiOS DVR or to simply control three devices including a TV, DVD player, audio amplifiers and receivers, and VCRs.

### Sonic Barrier AcT Acoustic Wall Panels



**Special**

- Improves imaging and frequency response
- Attractive faux suede finish complements room
- Completely absorbs first reflections within the critical midrange
- Packaged in sets of four
- Includes impalers to assist in panel mounting

**sonicbarrier™**

**Specifications:** • Sound absorption coefficients: 0.10 at 125 Hz, 0.53 at 250 Hz, 1.06 at 500 Hz, 1.15 at 1,000 Hz, 1.09 at 2,000 Hz, 1.06 at 4,000 Hz • NRC rating: 0.95 • Thickness: 1-1/2".

Part #	Mfg. #	Panel Size (H x W)	Color	List Price	Regular Price/Set	Special Price/Set
260-550	AcT22o	22-1/2" x 22-1/2"	Onyx	\$369.99	\$279.80	\$209.00
260-552	AcT22p	22-1/2" x 22-1/2"	Plum	369.99	279.80	209.00
260-554	AcT22s	22-1/2" x 22-1/2"	Sand	369.99	279.80	209.00
260-560	AcT45o	45" x 22-1/2"	Onyx	629.99	478.80	359.00
260-562	AcT45p	45" x 22-1/2"	Onyx	629.99	478.80	359.00
260-564	AcT45s	45" x 22-1/2"	Sand	629.99	478.80	359.00



## Microacoustics Micro Home Theater System



*Includes everything except the speaker wire!*

**microacoustics**

**Special**

- Perfect for small living areas
- Patent-pending speaker bar technology
- Quick and easy set-up

The Microacoustics home theater package includes the M400 5.1-channel receiver, the M145 speaker bar, and the MA65 passive subwoofer. When used together you'll have great home theater sound in minutes, with some of the smallest AV components in the industry. Installation is easy, and the sound is fantastic!

#252-406 .....\$399.99<sub>LIST</sub> **Regularly \$279<sup>98</sup>** **\$265<sup>00</sup>** EACH

## Sherwood HT-4180WL 5.1 Home Theater System



**Sherwood**  
**Clearance**

- 480 Watt 5.1 System
- HDMI, 1080p scaling
- Wireless rear speakers

The HT-4180WL Hollywood-at-Home system offers a thrilling surround sound experience without the complexity of typical systems.

**Specifications:** • 80 watts x 3 for LCR, 120 watts for subwoofer • 60 watts x 2 for wireless surround receiver/amplifier • Plays DVD±R/RW, CD-R/RW, DivX, JPEG, VCD, SVCD, MP3, WMA • HDMI • 1080p upscaling • Dolby® Digital; Dolby® Pro Logic II • USB host playback • FM stereo • Black, high gloss tallboy speakers.

#252-141 (Limited Quantities) ....\$499.95<sub>LIST</sub> **Regularly \$469<sup>98</sup>** **\$399<sup>00</sup>** EACH

## Sherwood VD-4500 Progressive Scan DVD Player



**Features:** • 96/24 Audio DACs for all channels • Anamorphic, letterbox, and 4 x 3 playback • Component, "S," and composite video outputs • Optical and coaxial digital audio output • 3-speed forward and reverse slow play • 6-speed forward and reverse rapid play • Zoom, marker, and multi-angle play • Programmable by title, track & chapter.

#252-129 .....\$179.95<sub>LIST</sub> **Regularly \$109<sup>98</sup>** **\$99<sup>00</sup>** EACH

## TAKING SOUND TO THE NEXT LEVEL

**DAYTON AUDIO**

**New**

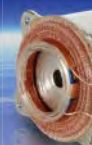
The all-new Dayton line of NXT Exciters is designed to transform ordinary surfaces and materials into amazing, high quality loudspeakers thanks to NXT's patented SurfaceSound™ technology. From low power exciters small enough to add audio to scale models and craft products, to the robust weatherproof Extreme Exciter designed to go anywhere and withstand the rigors of the great outdoors, Dayton Audio Exciters offer infinite audio possibilities. Create your own custom design loudspeakers out of anything, from cereal boxes to garage doors and RV cupboards to lamp shades, simply by attaching the exciters and connecting them to standard amplifiers. With four models, the Dayton Audio Exciters are the latest sound sensation—you'll soon be discovering endless ways to turn everyday objects into great speakers.



#300-376



#300-379



#300-377



#300-378



#300-375

Part #	Mfg. #	Description	List Price	Price (1-4)	Price (5-UP)
300-376	DAEXTX	Weatherproof extreme exciter	\$37.99	<b>\$29.90</b>	<b>\$28.40</b>
300-379	DAEX13	Mini exciter pair 13 mm	10.99	<b>8.90</b> (PR)	<b>8.45</b> (PR)
300-377	DAEXSFH	Steered flux high shove exciter	49.99	<b>39.90</b>	<b>37.90</b>
300-378	DAEX32	Balanced exciter with coupler ring	34.99	<b>28.90</b>	<b>27.50</b>
300-375	DAEX25	25 mm sound exciter	21.99	Regularly <b>16.90</b> (PR)	<b>Special 12.50</b> (PR)

## Sherwood VR-652B Hollywood-at-Home System with Speaker Bar

- USB-host, progressive scan
- Dolby virtual speaker
- Dolby headphone decoding
- 2 x 25W RMS for speaker bar
- 50W subwoofer

**Special**



### Specifications:

• Plays DVD, DVD-R/RW, DVD+R/RW, DivX, WMV9, CD, CD-R/RW, WMA9, WMA, MP3, VCD, SVCD, JPEG, Picture CD • 25W x 2 @ 0.5% THD, 6 ohms • Progressive scan • USB host • Front panel aux input for MP3/iPod • Subwoofer preamp output • 50W built-in subwoofer amp (10% THD, 4 ohms) • DTS, Dolby Digital, Dolby Virtual Speaker, Dolby headphone • 2/2 Audio in/out • Full timer functions • Subwoofer pre-out • Optical digital out • 2-way speaker (2.5" mid, 1" tweeter) • FM/AM tuner • Unified remote control.

#252-111 .....\$369.95<sub>LIST</sub> **Regularly \$349<sup>98</sup>** **\$315<sup>00</sup>** EACH

## Dayton Audio Premium Connectors



Dayton Audio premium connectors are designed for audiophiles that demand the highest performance. Precision machined and extensively gold plated, this line of connectors will stand the test of time while providing a pure signal path.

**Special**



Part #	Mfg. #	Description	List Price	Regular Price	Special Price
091-1250	BPGS-25G	Binding posts (2-red, 2-black)	\$14.99	\$11.33	\$8.50
091-1255	SPINGS-2MM	Speaker pins (2-red, 2-black)	15.99	12.19	8.50
091-1260	BAGS-G	Banana plugs (2-red, 2-black)	12.99	10.43	8.50
091-1265	RCAGS-ST	RCA connectors	18.99	14.44	10.50
091-1270	CAGS-LK	Locking RCA connectors	25.99	19.46	14.50

## Compression Connectors

- Nickel-plated
- Moisture resistant
- Professional termination every time



#092-490 #092-493 #092-498



**Special**

Part #	Connector	Cable Type	Regular Price	Special Price
092-490	F	RG-59	\$ .69	\$ .49
092-491	F	RG-6	.69	.49
092-492	F	RG-6 Quad Shield	.75	.49
092-493	BNC	RG-59	2.99	1.49
092-494	BNC	RG-6	2.99	1.49
092-495	BNC	RG-6 Quad Shield	2.99	1.49
092-496	RCA	RG-59	2.45	1.29
092-497	RCA	RG-6	2.45	1.29
092-498	RCA	RG-6 Quad Shield	2.45	1.29
360-046	3-In-1	Compression connector tool	35.57	29.90

## Philips Flashing Telephone Ringer

- Strobe flashes to alert the phone is ringing
- Ring can be turned off or accompanied by a low or high ring
- Includes 4 ft. line cord
- Simple installation

**BUYOUT**

**PHILIPS**

Signals calls with an amplified ring and flashing light. Perfect for the hearing impaired and for use in noisy areas. This device helps prevent missed calls by two modes of operation: flashing light or flashing light with amplified ring.

#159-015 ..... Compare to \$15.00

**\$225 \$214**  
(1-3) (4-UP)



## Modular Connectors

These professional connectors are the same high quality connectors used by telephone companies.

UL approved. Available in 4, 6, and 8 conductor configurations. Crimp tool required. 10 pieces per package.

**Special**



Part #	Type	Wire Type	Regular Price	Special Price
150-060	RJ11	4 C stranded flat	\$1.90	\$ .95
150-066	RJ11	4 C solid round	3.50	.85
150-067	RJ12	6 C stranded flat	1.80	.95
150-068	RJ12	6 C solid round	3.80	.95
150-069	RJ45	8 C stranded flat	2.82	1.95
150-070	RJ45	8 C universal round	6.50	1.95

## Heavy Duty Modular Crimp Tools

Steel construction crimping tools for installing modular line plugs. Cuts flat phone cable and strips to proper length. Cushioned grips for user comfort. Available in RJ11/RJ12 or RJ45 styles.

**Special**



Part #	Crimps	Regular Price	Special Price
150-051	RJ11/RJ12	\$12.58	\$8.90
150-054	RJ45	16.80	9.90

## 100 Piece Cable Ties

- Just zip and snip
- Zip-top resealable bags

**New**



Part #	Length	Color	List Price	Price (1-4)	Price (5-UP)
080-926	4"	Natural	\$ .99	\$ .69	\$ .66
080-928	6"	Natural	1.99	1.49	1.42
080-930	8"	Natural	3.99	2.59	2.46
080-932	12"	Natural	5.99	3.99	3.79
080-936	4"	Black	.99	.69	.66
080-938	6"	Black	1.99	1.49	1.42
080-940	8"	Black	3.99	2.59	2.46
080-942	12"	Black	5.99	3.99	3.79

## CREEPER Multi-Adjustable Work Light with 5 LEDs

- 5 LED lights
- Bright and long lasting
- 4 Flexible arms
- 4 Light settings
- Includes 3-AAA batteries

**\$988**  
EACH  
#369-005

Compare to \$33

**BUYOUT**

The CREEPER is the go anywhere, hold onto anything, hang on everything, work light. We saw this little CREEPER work light and we grew so "attached" to it that we had to buy a bunch and pass the savings on to you! Great for under the hood, under the sink, or under the covers! It shines brightly, adding light to all types of working conditions. Keep one in your vehicle for emergency situations.



## Hyde Die-Cast Self Retracting Safety Knife 10-Pack

**\$888**  
#369-010

**HYDE**

**BUYOUT**

Compare to \$50



- Self-retracting
- Allows blade exposure only when button is pressed forward
- High-visibility yellow finish
- Die-cast zinc alloy construction
- Includes one heavy-duty rounded tip blade
- Packaged 10 knives per carton





## TOGGLER®

### SNAPTOGGLE® Heavy-Duty Hollow-Wall Anchors

- Mount flat panel HDTVs to walls without using the studs
- Twice as strong as old-fashioned wing toggles
- Installs in about 10 seconds
- Requires 1/2" hole
- Supports up to 238 lbs. (BA) or 265 lbs. (BB) in 1/2" drywall
- 2-pc. and 10-pc. packages include bolts

**Special**

**Stock Up and Save!**

Part #	Mfg. #	Bolt Size	Pkg. Qty.	List Price	Regular Price	Special Price
080-316	BA	3/16"-24	2	\$3.99	<b>\$2.63</b>	<b>\$1.99</b>
080-317	BA	3/16"-24	10	12.99	<b>10.65</b>	<b>8.99</b>
080-318	BA	3/16"-24	50	29.99	<b>25.88</b>	<b>19.99</b>
080-319	BB	1/4"-20	2	3.99	<b>2.63</b>	<b>1.99</b>
080-320	BB	1/4"-20	10	12.99	<b>10.65</b>	<b>8.99</b>
080-321	BB	1/4"-20	50	25.99	<b>25.88</b>	<b>19.99</b>

### Automatic Wire Stripper/Cutter

Top load wire stripper/cutter features one squeeze stripping and cutting action. Accepts 10 to 20 AWG, stranded or solid wire. Tension is adjustable. 6-3/4" in length. Licensed by Elcontrol S. P.A. Italy. Patent U.S.A. No. 4366730, Patent Taiwan No. 25333.



Regularly **\$11<sup>89</sup>** **\$8<sup>90</sup>** EACH

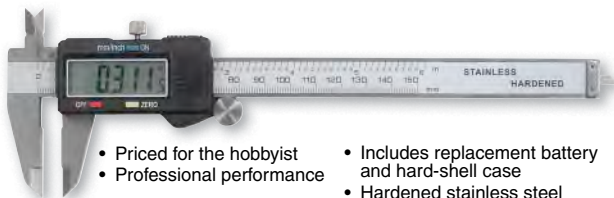
### Magnifier Bench Lamp

Multi-position, 30" fully adjustable swing arm with 3-way metal C-clamp. Uses standard light bulb, up to 60 watts (not included). Porcelain lamp socket, on/off switch, and a 3-3/4" diameter, 3 diopter (1.75x magnification) lens. UL listed, 117 VAC. Beige color.



Regularly **\$17<sup>50</sup>** **\$12<sup>50</sup>** EACH

### 6" Precision Digital Caliper



- Priced for the hobbyist
- Professional performance
- Includes replacement battery and hard-shell case
- Hardened stainless steel construction

Regularly **\$24<sup>92</sup>** **\$19<sup>90</sup>** EACH

#390-592 ..... \$33.99 LIST

### Cable Cutter

Made of carbon steel and hardened with black oxide finish. Curved blade cuts up to 1/0" AWG diameter wire. Red cushioned handles for comfort. Includes safety lock. 6-1/2" in length.



Regularly **\$5<sup>95</sup>** **\$4<sup>90</sup>** EACH

#360-622 ..... \$7.95 LIST

### Nibbling Tool

Nickel plated tool cuts up to 18 gauge unhardened metals and plastics. Ideal for making square holes for fuse holders, switches, indicator lamps, etc. 7" in length.



Regularly **\$9<sup>75</sup>** **\$6<sup>90</sup>** EACH

#360-022 ..... \$9.75 LIST

### Klein Crimping Tool

High quality crimping tool designed for crimping uninsulated terminals and connectors from 10 to 22 AWG. Handy wire cutter in the nose. Handles are plastic dipped. Length: 9-1/2".



#362-110 ..... **\$29<sup>49</sup>** **\$28<sup>85</sup>** (1-5) (6-UP)

### Rescue Tape 1" x 12 ft.

**RESCUE TAPE**

- Self-fusing—creates a permanent air-tight, water-tight seal in seconds
- Resists fuels, oils, acids, solvents, salt water, road salt, and UV rays
- Incredible 700 PSI tensile strength
- Insulates 8,000V per layer
- Withstands temperatures of 500° F
- Remains flexible to -85° F (-60° C)

**Special**



**25% OFF!**

Rescue Tape is a self-fusing silicone repair product with infinite uses. First used by the U.S. Military and now seen at consumer and industrial trade shows across America, this is the most versatile and easy-to-use emergency repair product available. You can repair leaks on plumbing and hoses in a flash, use to insulate electrical wiring or as shrink wrap, wrap tool handles, and much, much more. Dimensions: 1" x 12 ft. roll.

Part #	Color	Length	List Price	Regular Price	Special Price
350-070	Clear	1" x 12 ft.	\$12.95	<b>\$9.95</b>	<b>\$7.50</b>
350-072	Black	1" x 12 ft.	12.95	<b>9.95</b>	<b>7.50</b>
350-074	Red	1" x 12 ft.	12.95	<b>9.95</b>	<b>7.50</b>
350-076	Orange	1" x 12 ft.	12.95	<b>9.95</b>	<b>7.50</b>
350-078	Yellow	1" x 12 ft.	12.95	<b>9.95</b>	<b>7.50</b>
350-080	Green	1" x 12 ft.	12.95	<b>9.95</b>	<b>7.50</b>
350-082	Blue	1" x 12 ft.	12.95	<b>9.95</b>	<b>7.50</b>

## Super Savings!

**Special**

### Lufkin Self-Centering 25 Ft. Tape Measure

Using the Lufkin® Self-Centering 25 ft. tape is amazingly simple.



Regularly **\$9<sup>25</sup>** **\$7<sup>50</sup>** EACH

#360-760 ..... \$12.95 LIST

### DMM with Adjustable Display

This DMM features a unique moveable LCD display that can be adjusted up to a 70° angle. Functions include: • 5 DC voltage ranges up to 1000V • 5 AC voltage ranges up to 700V • 4 AC/DC current ranges up to 20A • 7 resistance ranges up to 200M • 5 capacitance ranges from 2 nF to 20 uF • Continuity checker • Diode and transistor tester • Data hold • Annunciators on all ranges • Includes test leads, operator's manual, 9V battery, and soft holster.



Regularly **\$29<sup>75</sup>** **\$19<sup>50</sup>** EACH

#390-545 ..... \$49.99 LIST

### Digital Multimeter

Value priced DMM performs basic functions and provides a 3-1/2 digit display, 0.8% basic DC accuracy, 4 VDC ranges up to 500V, 2 VAC ranges up to 500V, 1 DC amp ranges up to 200 mA, 4 resistance ranges up to 20M ohm, and diode test. Includes test leads, 9V battery, and manual.



Regularly **\$12<sup>92</sup>** **\$8<sup>50</sup>** EACH

#390-730 ..... \$24.99 LIST

## Phenolic Ring Tweeters

- Modern reproduction of the famous CTS design used by Marantz, Altec, and many others
- High efficiency and smooth response
- Restore your classic speaker system
- Available in 4 ohm and 8 ohm versions



At last, a faithful reproduction of the classic "phenolic ring" tweeter developed by CTS and used by Marantz, Altec, and many others! High efficiency and smooth, extended response. Low-mass paper cone and dust cap, 3/4" voice coil, and stamped steel faceplate.

**Specifications** (4 ohm/8 ohm): • Power handling: 30 watts RMS/60 watts max • VCDIA: 3/4" • Impedance: 4/8 ohms • Re: 3.6/6.9 ohms • Frequency response: 2,000-20,000 Hz • Fs: 1,078/1,084 Hz • SPL: 90.5/90.3 dB 1W/1m • Dimensions: A: 4-1/4", B: 3-3/16" (plus notches for terminals), C: 1-1/4".

#270-250 (4 ohm)

#270-252 (8 ohm) .....\$19.99<sub>LIST</sub> **\$14<sup>80</sup>** (1-3) **\$12<sup>30</sup>** (4-UP)

## 15" Replacement Woofers for the Realistic Mach One

PE Exclusive!

- Modern reproduction of the famous Mach One design
- Resurrect your Mach One speakers from the Seventies!
- Same voicing but up-to-date materials and technology
- 2-1/4" copper voice coil on brass former
- Available in 4 ohm and 8 ohm versions
- Great results in custom acoustic suspension designs, too!



Radio Shack produced the Realistic Mach One speaker for almost ten years, beginning in the 1970s. The Mach One 15" 3-way system is considered one of the finest loudspeakers offered by Radio Shack. Over time, many Mach Ones have been lost due to foam rot and old age. We've recreated a 15" driver that features the same warm, thundering sound characteristics as the original, but thanks to contemporary materials and technology will last far longer. Now you can resurrect your set of Realistic Mach One speakers with completely new woofers, giving them a fresh lease on life!

### 15" Mach One Replacement Woofer 4 Ohm

**Specifications:** • Power handling: 125 watts RMS/250 watts max • VCDIA: 2-1/4" • Le: 2.85 mH • Impedance: 4 ohms • Re: 3.6 ohms • Frequency response: 20-1,000 Hz • Fs: 20 Hz • SPL: 90 dB 2V/1m • VAS: 13.62 cu. ft. • QMS: 4.95 • QES: 0.57 • QTS: 0.51 • XMAX: 3.3 mm • Dimensions: A: 15-1/4", B: 13-3/4", C: 6-1/4".

#290-182 .....\$99.99<sub>LIST</sub> **\$74<sup>88</sup>** (1-3) **\$69<sup>75</sup>** (4-UP)

### 15" Mach One Replacement Woofer 8 Ohm

**Specifications:** • Power handling: 125 watts RMS/250 watts max • VCDIA: 2-1/4" • Le: 1.82 mH • Impedance: 8 ohms • Re: 7.2 ohms • Frequency response: 22-1,200 Hz • Fs: 22 Hz • SPL: 90 dB 2.83V/1m • VAS: 12.09 cu. ft. • QMS: 4.94 • QES: 0.63 • QTS: 0.56 • XMAX: 2.5 mm • Dimensions: A: 15-1/4", B: 13-3/4", C: 6-1/4".

#290-184 .....\$99.99<sub>LIST</sub> **\$74<sup>88</sup>** (1-3) **\$69<sup>75</sup>** (4-UP)

## Morel MDT 12 1-1/8" Compact Soft Dome Tweeter

The MDT 12 is a chamberless neodymium design that offers big tweeter performance in an ultra-compact package. Measuring only 3/4" deep, it uses Morel's standard 1-1/8" dome and a powerful neodymium motor for big sound.



**Specifications:** • Power handling: 80 watts RMS/110 watts max • VCDIA: 1-1/8" • Impedance: 8 ohms • Re: 5.2 ohms • Frequency response: 1,800-25,000 Hz • Fs: 1,000 Hz • SPL: 89 dB 1W/1m • Dimensions: A: 2-1/8" x 2-1/8", B: 1-3/4", C: 3/4".

#277-060 .....\$37.99<sub>LIST</sub> Regularly **\$31<sup>77</sup>** **\$25<sup>50</sup>** EACH

## Tang Band W3-1053SC 3" Full Range Driver

PE Exclusive! **TB SPEAKERS**

- Smooth, extended response
- Steel frame and neodymium motor
- Poly cone with rubber half-roll edge
- Underhung 7/8" VC provides linearity and low distortion
- Perfect for point source applications or line arrays

Special



Made by Tang Band but available exclusively from Parts Express! The W3-1053SC has an attractive pincushion style frame, edge-damped poly cone, flat spider, and rubber surround. Underhung 7/8" voice coil provides linear travel and wide range. Extremely smooth, extended frequency response.

**Specifications:** • Power Handling: 15 watts RMS/30 watts max • VCDIA: 7/8" • Le: 0.44 mH • Impedance: 8 ohms • Re: 5.98 ohms • Frequency range: 100-18,000 Hz • Fs: 100 Hz • SPL: 85 dB 1W/1m • VAS: 0.04 cu. ft. • QMS: 4.77 • QES: 0.72 • QTS: 0.62 • XMAX: 1.5 mm • Dimensions: A: 3-3/16", 3-13/16" diagonally, B: 3", C: 2".

#264-880 .....\$24.99<sub>LIST</sub> Regularly **\$11<sup>60</sup>** **\$9<sup>00</sup>** EACH

## Tang Band 8" Neodymium Full Range Drivers

- Underhung 1-1/2" voice coil reduces distortion
- Copper plated aluminum phase plug
- Secondary "whizzer" cone improves HF response
- Up to 5 mm XMAX
- W8-1808 incorporates a higher Qts, for large or open enclosures



Tang Band's 8" full range drivers feature a sturdy cast frame, multiple-element neodymium magnet system, paper cone, and cloth half-roll surround. Designed for point source/full range applications, the W8-1772 and W8-1808 are also ideal for single-ended tube amp systems.

### W8-1772 8" Neodymium Full Range Driver

**Specifications:** • Power handling: 30 watts RMS/60 watts max • VCDIA: 1-1/2" • Impedance: 8 ohms • Re: 6.8 ohms • Frequency range: 42-20,000 Hz • Fs: 42 Hz • SPL: 95 dB 1W/1m • VAS: 3.34 cu. ft. • QMS: 1.02 • QES: 0.36 • QTS: 0.27 • XMAX: 3 mm • Dimensions: A: 8.81", B: 7.5", C: 4.37".

#264-893 .....\$219.99<sub>LIST</sub> Regularly **\$184<sup>80</sup>** **\$168<sup>00</sup>** EACH

### W8-1808 8" Neodymium Full Range Driver

**Specifications:** • Power handling: 30 watts RMS/60 watts max • VCDIA: 1-1/2" • Impedance: 8 ohms • Re: 6.8 ohms • Frequency range: 45-20,000 Hz • Fs: 45 Hz • SPL: 93 dB 1W/1m • VAS: 3.11 cu. ft. • QMS: 1.33 • QES: 0.66 • QTS: 0.44 • XMAX: 5 mm • Dimensions: A: 8.81", B: 7.5", C: 4.53".

#264-894 .....\$219.99<sub>LIST</sub> Regularly **\$184<sup>80</sup>** **\$168<sup>00</sup>** EACH

## Clark Synthesis TST209 Tactile Transducer

- Up to 10 times the force of the Aura Pro Bass Shaker
- Mounts horizontally or vertically
- Only one needed per seat—acts as a silent subwoofer
- Increases perceived loudness
- Brings gunshots and explosions to life

PE Exclusive!

TACTILE SOUND



The TST209 transducer is designed explicitly for home theater use and represents one of the best values on the market today producing 1.6 lbs.-ft. of force per watt, with a peak force output of 216 lbs.-ft. per watt.

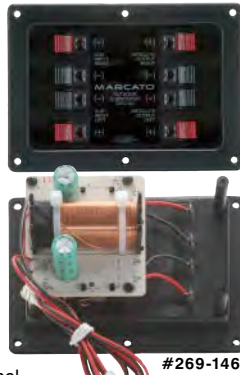
**Specifications:** • Power handling: 100 watts RMS/350 watts max • Tactile frequency response: 15-800 Hz • Audible frequency response: 35-17,000 Hz • Impedance: 4 ohms • Transduction force: 1.6 lbs.-ft./watt • Peak tactile force: 216 lbs.-ft. • Dimensions: 8.0" dia. x 1.73" H.

#300-861 .....\$129.99<sub>LIST</sub> Regularly **\$79<sup>98</sup>** **\$68<sup>88</sup>** EACH



## Input/Output Subwoofer Terminals with Crossover

- All-in-one package
- Easy to install, includes wire leads
- High-grade components
- Made in the USA
- Good power handling capacity



#269-146

Crossover/input-output terminals used in the Marcato DVC-110 and DVC-112 outdoor subwoofer system. The DVC-110's circuit board is loaded with two 9.6 mH inductors and two 70µ 100V capacitors, and the DVC-112's is loaded with two 9.6 mH inductors, two 200µ 100V capacitors, and two 75µ 100V capacitors. Spring loaded terminals for input/output connections. Designed for 8 ohm nominal loads per channel. Great for DVC or dual-driver subwoofer systems. Buyout, limited quantities.

### DVC-110 Crossover

**Specifications:** Crossover frequencies (low pass): 120 Hz @ 6 dB Butterworth alignment; (high pass): 300 Hz @ 6 dB • Power handling: 75W/channel RMS, 150W/channel max • Overall dimensions: 5-1/2" W x 3-7/8" H x 3-1/2" D • Cutout dimensions: 4-3/4" x 3-1/4".

**BUYOUT**

**\$2.50**  
EACH  
#269-146

Compare to \$20

### DVC-112 Crossover

**Specifications:** Crossover frequencies (low pass): 120 Hz @ 12 dB Chebychev alignment; (high pass): 300 Hz @ 6 dB • Power handling: 100W/channel RMS, 200W/channel max • Overall dimensions: 5-1/2" W x 3-7/8" H x 3-1/2" D • Cutout dimensions: 4-3/4" x 3-1/4".

**\$3.00**  
EACH  
#269-148

Compare to \$25

## Pressfit Speaker Terminal

Spring loaded, pushbutton speaker terminal in a round housing. Accepts up to 12 gauge wire. Overall size: 2-3/16" round; cutout: 1-7/8" round.

**48¢**  
EACH  
#269-373

Compare to 99¢

## Round Spring Terminal

Round spring terminal cup includes red and black terminals for easy polarity identification. Includes mounting gasket, measures 4-1/2" round and requires 3-3/8" cutout. Mounting holes located on the cardinal points.

**68¢**  
EACH  
#269-960

Compare to 99¢

## Subwoofer Input/Output Terminal

This recessed terminal panel has four inputs and four outputs for connecting in and out of a passive subwoofer system. Accepts large diameters of wire and comes with mounting gasket. Overall size is 5" x 7", cutout is 4" x 6".

**\$1.45**  
EACH  
#269-964

Compare to \$4



## 2" Full Range Aluminum Cone Neodymium Driver

- Neodymium magnet
- Anodized aluminum cone
- Gray rubber surround

Full range 2" driver with 1" voice coil and aluminum cone. Conservative 5 watt power rating. Perfect for compact speaker projects or line arrays.

**BUYOUT**



**\$2.00**  
(100-UP)  
#289-124

Compare to \$10

**Specifications:** • Power handling: 5 watts RMS/10 watts max • VCDIA: 1" • Le: 0.18 mH • Impedance: 8 ohms • Re: 7.57 ohms • Frequency response: 147-14,000 Hz • Fs: 147 Hz • SPL: 82.6 dB 1W/1m • Vas: 0.011 cu. ft. • Qms: 2.42 • Qes: 0.84 • Qts: 0.62 • Xmax: 1.5 mm • Dimensions: A: 2-1/4" (2-7/8" diagonally ear-to-ear), B: 2-1/16", C: 1-1/4".

#289-124 ..... **\$3.80** (1-34) **\$3.00** (35-99)

## Alesis 1" Soft Dome Shielded Tweeter

**BUYOUT**

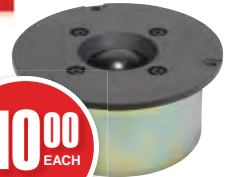
**ALESIS**

- 1" treated fabric dome
- Fully shielded design
- Horn loaded faceplate for high efficiency

**Specifications:** • Power handling: 40 watts RMS/80 watts max • VCDIA: 1" • Impedance: 4 ohms • Re: 3.0 ohms • Frequency range: 3,000-20,000 Hz • Fs: 1,500 Hz • SPL: 93 dB 1W/1m • Dimensions: A: 3-3/4", B: 3", C: 1-3/4".

**\$10.00**  
EACH  
#279-140

Compare to \$35



## JVC 3" x 5" Full Range Driver

**JVC**

Paper cone, stamped steel frame, and front and rear mounting gaskets. 3/4" voice coil helps extend HF response to 16,000 Hz.

**Specifications:** • Power handling: 15 watts RMS/30 watts max • Impedance: 8 ohms • Re: 7.5 ohms • Frequency response: 90-16,000 Hz • Fs: 90 Hz • SPL: 85.5 dB 1W/1m.

#269-482 ..... **\$1.98** (1-9)

Compare to \$7



**\$1.50**  
(10-UP)  
#269-482

## JVC 1" x 4" Full Range Neo Driver with Housing

Features include rubber-edged ribbed plastic cone, polymer frame, neodymium magnet, and unusual oval voice coil.

**Specifications:** • Power handling: 10 watts RMS/20 watts max • Impedance: 8 ohms • Frequency response: 147-18,000 Hz • Fs: 147 Hz • SPL: 80 dB 1W/1m.

#269-484 ..... **\$2.48** (1-9)

Compare to \$7



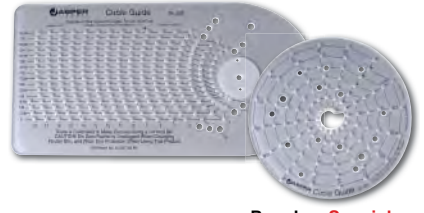
**\$1.98**  
(10-UP)  
#269-484

*If you're a speaker builder, you need this tool!*

## Jasper Circle Jigs

Jasper jigs convert your router into a precision circle cutting device that will cut circles and mortises in 1/16" increments. Ideal tool for creating highly accurate cutouts in custom built speaker cabinet baffles. Model 400 is perfect for small tweeters and midranges. Designed for use with MDF, plywood, particle board, solid woods and plastic sheet. Mounts directly to the base of 19 different models of routers including Bosch 1613 and 1615, DeWalt 621 and 625, Freud FT2000E, Hitachi M8V, TR12 and M12V, Porter Cable 693 and 7539, Skil 1823 and 1825, and all Sears, Ryobi and Makita models. Made in the USA.

**Special**



Part #	Mfg. #	Hole Size	Regular Price	Special Price
365-255	400	1"-7-1/2"	\$26.62	<b>\$19.00</b>
365-250	200	2-1/4"-18-3/16"	38.88	<b>29.00</b>
365-260	Combo Pack (#365-255 & #365-250)		54.90	<b>39.00</b>



*The Copper Project By: Marty Hafenbreadl*

## 1

### Design Goals

The objective of this project was to create a high performance, yet modestly-priced floor standing system easily built by the beginning hobbyist—in essence an entry-level project designed to deliver exceptional performance. To achieve this, it was important that its enclosure construction remain simple and the crossover as uncomplicated as possible.

The Copper Project was unveiled at the Iowa 2009 DIY event where it performed quite admirably against projects costing 50% more! Comments such as 'Spot On', 'Best in Class', and 'Excellent Balanced Performance with Great Bass' were tossed its way.

## 2

### Driver Selection

I am a big believer in the philosophy that the more parts in the crossover, the less life from the drivers, and if the crossover requires an inordinate part-count then the drivers probably don't belong together; that's especially true in a budget design! Respecting that philosophy first and foremost requires starting with well behaved drivers. I also wanted to try a new mid-woofer, something with a limited history in the design community. Fortunately for this design, my first choice was the best option, the Tang Band W5-1685, which was then paired with the Vifa XT25SC90-4. The Vifa tweeters small flange allows for tight center-to-center placement, ideal for this design. Testing revealed that both the Tang Band and Vifa helped achieve the exact results desired! 1-1/8" tweeter to improve power-handling and maintain a coherent source rather than use a smaller 3/4" dome tweeter that has to be crossed higher and therefore "stretching" the radiation point at high frequencies.

## 3

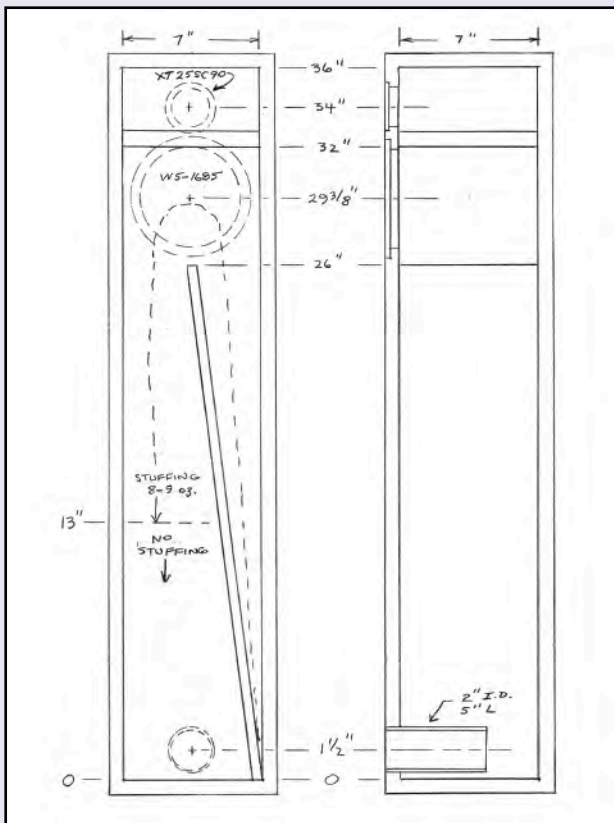
### Enclosure Design

Utilizing a mass loaded, tapered quarter-wave enclosure designed by Paul Kittinger, the 5 1/4" Tang Band W5-1685 is able to achieve an F3 of 33 Hz and an F10 of approximately 28 Hz. amazing performance courtesy of Paul and Martin King's work! Using 3/4" stock the external cabinet dimensions are 40" x 8.5" x 8.5" with the internal volume of 1.02 cubic feet on measurements of 36" x 7" x 7". The total line length is 62" with the woofer centered on the line. A piece of one-half inch MDF divides the cabinet from front to back starting in the lower right corner of the chamber, terminating at the center point of the enclosure. The divider runs to the 26" mark from the base. The cabinet is designed to support a port on either the front or back baffle, depending on room placement. The port is 2" I.D. by 5" length. The cabinet is evenly stuffed with eight ounces of Acousta-Stuff ending 13" above the bottom of the port-side of the chamber. It is important that the stuffing is evenly distributed throughout the chamber by density. To accomplish this, it's advisable to stuff the cabinet before securing the front baffle. The upper chamber easily houses the Vifa XT25SC90-4 tweeter and the crossover unit. One last thought—if you plan on building the cabinet as shown, be sure to install the internal wiring and binding posts before securing the front baffle. In testing I simply secured the front baffle with strapping and adjusted the Acousta-Stuff until satisfied. While outstanding low end response is achieved in this design, the compromise comes in a loss of overall efficiency, averaging approximately 79 dB @ 2.83 volts, or 2-watts on a 4-ohm system.

A few enclosure building tips:

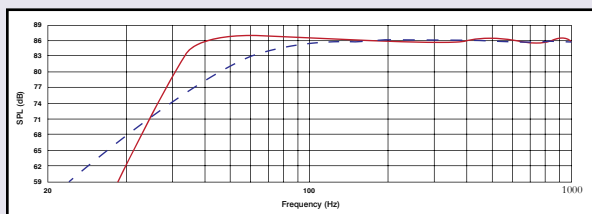
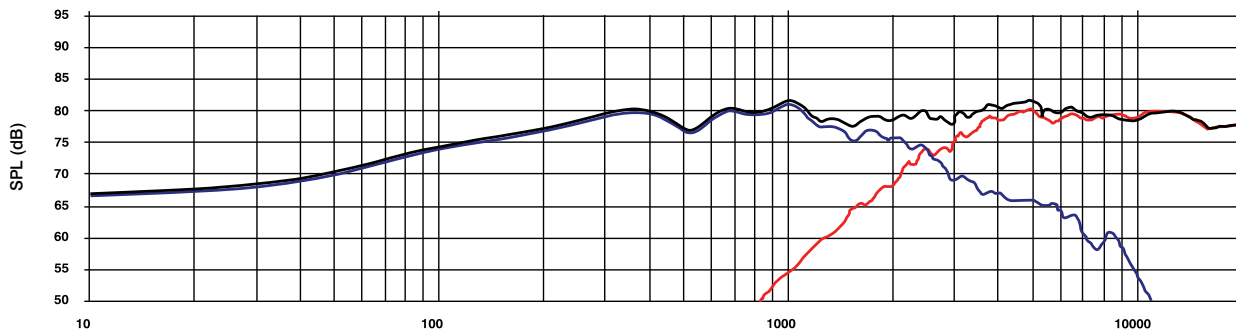
- Secure the stuffing with spray adhesive, especially behind the driver and along the wider side of the transmission line.
- With the stuffing ending at the 13" mark, three 3/8" dowels running across the enclosure will help secure the stuffing without impacting the function of the line.
- The Tang Band driver is a hefty unit! I recommend a baffle thickness of at least 1-1/4".
- All drivers are flushed mounted, making a 1" baffle especially important!

# THE COPPER PROJECT





## Woofer + Tweeter System Response



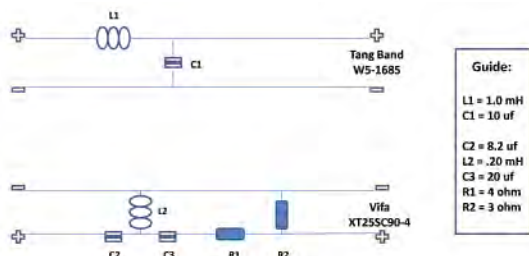
## 4

### Crossover Design

The Copper Project utilizes an extremely simple crossover design, with a second-order topology on the woofer and a third-order on the tweeter. Incorporating an L-Pad into the tweeter design reduces the output by approximately 6 dB, aligning it with that of the Tang Band woofer. The crossover point is set at 2,500 Hz. The impedance stays at 4-ohms or better. Since their debut, I've built a second set making some minor adjustments to the crossover, the result being a more open midrange presence and smoother bass response. The result of all these measures is a frequency curve with an efficiency of 85 dB/1W/1m that is within +/-0.5 dB's over the entire range and a near ruler-flat impedance curve that is centred around a healthy 6 ohms. This should be an easy load for any amplifier.

The crossover components were chosen for their good price/quality ratio. Nothing exotic, with standard quality MPT's throughout. Inductors are standard air-cores where low Rdc is not an issue, laminated-core inductors are used where low Rdc is important. All the resistors are induction free types, the couple of extra bucks are worth it here.

### Wiring Diagram



**DISCLAIMER** - Parts Express posts the "Project Showcase" as a community service. Projects displayed have not been tested or evaluated by our staff. We make no warranties whatsoever in regard to the projects' fitness for a particular purpose. Claims of performance or fitness are those of the contributor and not of Parts Express. Project re-production for commercial resale may be a violation of United States patent or trademark laws.

Copyright 2010 Parts Express

## Parts List



**Tang Band Midbass**  
#264-873



**Vifa Tweeter**  
#264-1014

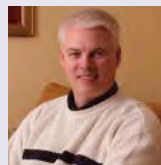
Part #	Description	Qty.
264-873	Tang Band W5-1685 5" Underhung Midbass Driver	2
264-1014	Vifa XT25SC90-04 1" Dual Radiator Tweeter	2
255-100	Jantzen 1.0mH 15 AWG P-Core Inductor	2
255-024	Jantzen 0.20mH 20 AWG Air Core Inductor	2
027-428	Dayton DMPC-10 10uF 250V Polypropylene Capacitor	2
027-426	Dayton DMPC-8.2 8.2uF 250V Polypropylene Capacitor	2
027-436	Dayton DMPC-20 20uF 250V Polypropylene Capacitor	2
005-3	Mills 3 Ohm 12W Non-Inductive Resistor	2
004-4	Dayton DNR-4.0 4 Ohm 10W Precision Audio Grade Resistor	2
091-1245	Dayton BPA-38G HD Binding Post Pair Gold	2
260-387	Port Tube 2" ID Adjustable	2
240-718	Dayton DSS4-G Gold Speaker Spike Set 4 Pcs.	2

## 5

### Conclusion

How often does a project come together as wonderfully as this? With about \$230 in drivers and crossover parts you get great bass—big, yet tight; great midrange, and sweet highs. Oh sure, with a smallish driver some compromises are made such as the need for a healthy amplifier, but as far as sound quality and ease of build, The Copper Project met and exceeded all my expectations. Thanks to Paul for the enclosure design and 'Dirk' for his assistance with measurements and crossover design—great work, guys!

### About the Designer



Raised in an environment where there was always an old-time stereo just waiting to be disassembled, Marty Hafenbreidl developed his fascination of radio and music, and from that a natural progression into speaker design. With no formal electronics education, he still enjoys the art, science, and creativity that go into the build process. Living in Wisconsin's Fox Valley, Marty's fortunate to live around some of the hobbies most talented designers and is able to call them friends. Like most DIY'ers he's constantly looking for ways to improve his original designs as well as formulating ideas to integrate into new projects. Some of his other interests include snow skiing, golf, raising roses, coaching his son's Little League team, participating in DIY events, and chatting on the PE Tech Talk board.

For more information about this project, visit [parts-express.com](http://parts-express.com)

## Dayton Audio NS Series Low Profile Neodymium Subwoofers



*Put more bass in the place where there was never enough space!*

- Low profile design
- Die-cast frame
- Rigid flat honeycomb fiberglass cone
- Dual 4 ohm voice coils
- Powerful neodymium motor
- High excursion capability provides solid bass/less distortion
- Inverted deep-roll rubber surround
- Excellent power handling—without exceeding XMAX!



New



The mounting dimension is shallow, but the response is deep! Dayton Audio's NS Series offers new possibilities for installing low distortion, high output sub drivers. As little as 2-1/2" in depth, these heavy duty neodymium transducers are perfect for mounting in walls, floors, and even ceilings, as well as stealthy mobile audio applications. The performance characteristics alone will convince you to use NS Series subs—even when space is not an issue!

### NS210-44 8" Neodymium Subwoofer

**Specifications:** • Power handling: 200 watts RMS/400 watts max • VCDIA: 2" • Le: 0.85 mH • Impedance: 2 ohms • Re: 1.82 ohms • Frequency range: 35-500 Hz • Fs: 38 Hz • SPL: 91 dB 2.83V/1m • VAS: 0.51 cu. ft. • QMS: 5.74 • QES: 0.39 • QTS: 0.37 • XMAX: 7 mm • Dimensions: A: 8-1/4", B: 7-3/8", C: 2-1/2".

#295-132 ..... \$129.99<sub>LIST</sub> **\$99<sup>86</sup>** (1-3) **\$94<sup>87</sup>** (4-UP)

### NS270-44 10" Neodymium Subwoofer

**Specifications:** • Power handling: 250 watts RMS/500 watts max • VCDIA: 2" • Le: 0.91 mH • Impedance: 2 ohms • Re: 1.82 ohms • Frequency range: 30-300 Hz • Fs: 32 Hz • SPL: 93 dB 2.83V/1m • VAS: 1.41 cu. ft. • QMS: 4.58 • QES: 0.42 • QTS: 0.39 • XMAX: 7 mm • Dimensions: A: 10-1/4", B: 9-3/8", C: 3-3/16".

#295-134 ..... \$155.99<sub>LIST</sub> **\$119<sup>94</sup>** (1-3) **\$113<sup>94</sup>** (4-UP)

### NS310-44 12" Neodymium Subwoofer

**Specifications:** • Power handling: 250 watts RMS/500 watts max • VCDIA: 2" • Le: 0.96 mH • Impedance: 2 ohms • Re: 1.86 ohms • Frequency range: 25-200 Hz • Fs: 27 Hz • SPL: 93 dB 2.83V/1m • VAS: 2.79 cu. ft. • QMS: 5.78 • QES: 0.48 • QTS: 0.44 • XMAX: 7 mm • Dimensions: A: 12-3/8", B: 11-1/8", C: 3-11/16".

#295-136 ..... \$194.99<sub>LIST</sub> **\$149<sup>72</sup>** (1-3) **\$142<sup>23</sup>** (4-UP)

Note: All specifications are with voice coils connected in parallel.

## Dayton Audio NS Series Passive Radiators

New



- Same cosmetics as NS Series drivers, can be used with others
- Rigid flat honeycomb fiberglass cone
- Low profile die-cast frame
- High excursion stable suspension
- Inverted deep-roll rubber surround
- Unique mass loading apparatus (mass included)



Cosmetically and dynamically compatible with NS Series subwoofer drivers. Great alternative for applications in which port lengths exceed internal cabinet dimensions or a "closed" bass reflex design is desired.

## Dayton Audio ND105-4 4" Aluminum Cone Midbass Driver 4 Ohm

- Full-range 60 Hz to 10 kHz performance
- Rubber-edged aluminum alloy cone
- Large excursion capability—4 mm XMAX, 20 mm peak
- Self-shielded Neo-Sym motor structure
- 1" 4-layer underhung voice coil with polyimide former



Special

**Specifications:** • Power handling: 30 watts RMS/60 watts max • VCDIA: 1" • Le: 0.78 mH • Impedance: 4 ohms • Re: 3.7 ohms • Frequency range: 60-10,000 Hz • Fs: 53.8 Hz • SPL: 82.6 dB 1W/1m • VAS: 0.16 cu. ft. • QMS: 7.16 • QES: 0.59 • QTS: 0.55 • XMAX: 4 mm • Dimensions: A: 4-1/8", B: 3-5/8", D: 2-3/8".

#290-212 ..... \$32.99<sub>LIST</sub> **\$24<sup>85</sup>** Regularly **\$12<sup>00</sup>** EACH

## Dayton Audio DSS4-SN Satin Nickel Speaker Spike Set 4 Pcs.

- Dramatically improves clarity, stereo imaging, and bass response
- Great results when used with subwoofer systems
- Two-piece tip design for level adjustment
- Barbed inserts can be mounted from inside or outside the cabinet

New



The Dayton Audio DSS Series spikes are precision machined from solid brass and then plated with a satin nickel finish. Set includes four satin nickel cone spikes, four satin nickel floor discs, four barbed inserts, and four M6 threaded studs.

#240-719 ..... \$33.99<sub>LIST</sub> **\$25<sup>45</sup>** (1-3) **\$24<sup>24</sup>** (4-UP)

## Dayton Audio SA70 70W Subwoofer Amplifier

- Line-level and speaker-level inputs
- Auto-on circuit
- Variable 2nd order low-pass crossover

**Specifications:** Measured power output: 45 watts RMS into 8 ohms @ 0.1% THD, 70 watts RMS into 4 ohms @ 0.2% THD. Signal to noise ratio: 90 dB (A-weighted). Dimensions: 7-1/2" W x 8-11/16" H x 3-1/2" D. Enclosure cutout: 6-1/2" W x 7-3/4" H.



#300-784 ..... \$99.99<sub>LIST</sub> Regularly **\$67<sup>39</sup>** **\$53<sup>00</sup>** EACH

### NS270-PR 10" Cast Frame Passive Radiator

**Specifications:** • Fs: 24 Hz • VAS: 1.24 cu. ft. • QMS: 6.00 • CMS: 0.23 mm/N • MMS: 200 g • RMS: 4.8 kg/s • Sd: 324 sq. cm. • XMAX: 10 mm • Dimensions: A: 10-1/4", B: 9-3/8", C: 2-7/8".

#295-138 ..... \$76.99<sub>LIST</sub> **\$58<sup>72</sup>** (1-3) **\$55<sup>78</sup>** (4-UP)

### NS310-PR 12" Cast Frame Passive Radiator

**Specifications:** • Fs: 22 Hz • VAS: 1.95 cu. ft. • QMS: 5.40 • CMS: 0.17 mm/N • MMS: 312 g • RMS: 8.0 kg/s • Sd: 482 sq. cm. • XMAX: 10 mm • Dimensions: A: 12-3/8", B: 11-1/8", C: 3-3/8".

#295-140 ..... \$99.99<sub>LIST</sub> **\$69<sup>94</sup>** (1-3) **\$66<sup>44</sup>** (4-UP)

### NS390-PR 15" Cast Frame Passive Radiator

**Specifications:** • Fs: 22 Hz • VAS: 5.34 cu. ft. • QMS: 3.90 • CMS: 0.16 mm/N • MMS: 345 g • RMS: 11.7 kg/s • Sd: 818 sq. cm. • XMAX: 10 mm • Dimensions: A: 15-1/4", B: 13-7/8", C: 4-3/4".

#295-142 ..... \$129.99<sub>LIST</sub> **\$99<sup>78</sup>** (1-3) **\$94<sup>79</sup>** (4-UP)



## Dayton Audio DVC Shielded Subwoofers

- Perform well in sealed or vented enclosures
- Attractive gasket-less design
- Long-life rubber surround for years of reliable service
- Excellent bottom octave performance
- Magnetically shielded



**Special**

### SD215-88 8" Subwoofer

**Specifications:** • Power handling: 80 watts RMS/120 watts max • VCDia: 1.5" • Le: 1.2 mH • Impedance: 4 ohms • Re: 3.0 ohms • Frequency range: 30-2,000 Hz • Fs: 28Hz • SPL: 89 dB 2.83V/1m • VAS: 1.40 cu. ft. • QMS: 3.40 • QES: .47 • QTS: .41 • XMAX: 6 mm • Dimensions: A: 8-1/2", B: 7-1/8", C: 4-1/4"



#295-480 ..... \$37.99<sub>LIST</sub> Regularly **\$28<sup>48</sup>** **\$23<sup>50</sup>** EACH

### SD270-88 10" Subwoofer

**Specifications:** • Power handling: 80 watts RMS/120 watts max • VCDia: 1.5" • Le: 1.2 mH • Impedance: 4 ohms • Re: 3.1 ohms • Frequency range: 30-1,500 Hz • Fs: 25 Hz • SPL: 93 dB 2.83V/1m • VAS: 3.90 cu. ft. • QMS: 3.20 • QES: .43 • QTS: .38 • XMAX: 6 mm • Dimensions: A: 10-5/8", B: 9", C: 4-3/4"



#295-485 ..... \$50.99<sub>LIST</sub> Regularly **\$38<sup>61</sup>** **\$32<sup>50</sup>** EACH

### SD315-88 12" Subwoofer

**Specifications:** • Power handling: 120 watts RMS/180 watts max • VCDia: 2" • Le: 1.4 mH • Impedance: 4 ohms • Re: 3.1 ohms • Frequency range: 30-1,000 Hz • Fs: 25 Hz • SPL: 94 dB 2.83V/1m • VAS: 5.20 cu. ft. • QMS: 4.00 • QES: .38 • QTS: .35 • XMAX: 7 mm • Dimensions: A: 12-3/8", B: 10-3/4", C: 6"

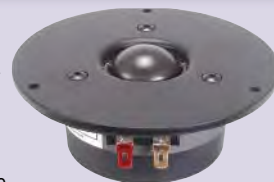


#295-490 ..... \$66.99<sub>LIST</sub> Regularly **\$50<sup>92</sup>** **\$43<sup>00</sup>** EACH

Note: All specifications are with voice coils connected in parallel.

## Dayton Audio 1-1/8" Silk Dome Tweeters

- Treated silk dome offers smooth response with open, airy highs
- Damped rear chamber makes low crossover points possible
- Matches or exceeds the performance of many high-dollar tweeters
- Shielded version allows use near CRT monitors



**Special**

**Specifications:** • Power handling: 50 watts RMS/75 watts max • VCDia: 1-1/8" • Impedance: 8 ohms • Re: 5.4 ohms • Frequency range: 2,000-20,000 Hz • Fs: 900 Hz • SPL: 89 dB 2.83V/1m • Dimensions: A: 4-5/16", B: 3-1/8", C: 1-1/8" (Shielded version C: 1-1/2").

#275-070 (DC28F-8 non-shielded) .... \$25.99<sub>LIST</sub> Regularly **\$19<sup>60</sup>** **\$13<sup>00</sup>** EACH  
#275-075 (DC28FS-8 shielded) ..... \$29.99<sub>LIST</sub> Regularly **\$22<sup>80</sup>** **\$15<sup>00</sup>** EACH

## Dayton Audio ST305-8 12" Series II Woofer

**Specifications:** • Power handling: 275 watts RMS/380 watts max • VCDia: 2-1/2" • Le: 2.30 mH • Impedance: 8 ohms • Re: 5.7 ohms • Frequency response: 27-2,000 Hz • Fs: 27 Hz • SPL: 92 dB 1W/1m • VAS: 5.70 cu. ft. • QMS: 11.72 • QES: .34 • QTS: .34 • XMAX: 8.0 mm • Dimensions: A: 12", B: 11", C: 4-3/4"



#295-120 ..... \$127.99<sub>LIST</sub> Regularly **\$96<sup>65</sup>** **\$75<sup>00</sup>** EACH

## Dayton Audio RSS265HF-4 10" Subwoofer

**Specifications:** • Power handling: 350 watts RMS/600 watts max • VCDia: 2-1/2" • Le: .95 mH • Impedance: 4 ohms • Re: 3.3 ohms • Frequency range: 22-1,000 Hz • Fs: 22 Hz • SPL: 87 dB 2.83V/1m • VAS: 2.12 cu. ft. • QMS: 2.80 • QES: .45 • QTS: .39 • XMAX: 14 mm • Dimensions: A: 10-1/2", B: 9-1/4", C: 5"



#295-460 ..... \$163.99<sub>LIST</sub> Regularly **\$125<sup>79</sup>** **\$105<sup>00</sup>** EACH

## Dayton Audio SWC Series Subwoofer Cabinets

*The new SWC Series sub boxes offer the ultimate combination of versatility and value!*

All SWC cabinets use the Dayton Audio B-REX removable/replaceable baffle exchange system. The 1" thick MDF blank baffles are custom-cut by the user to fit a given driver and amplifier, and are then fastened securely (permanently or not) into the rigid, 3/4" MDF enclosure.

Each enclosure includes two black satin finish baffles (one each, front and back) with mounting hardware, a magnetically attached grill, and four rubber feet fastened by 6 mm barbed inserts. The barbed inserts are compatible with Dayton Audio cone spikes, available separately.



Part #	Mfg. #	Cabinet Finish	Net Vol. (cu. ft.)	External Dim. (H x W x D)	Price
302-836	SWC1BK	Gloss black	1.0	14" x 14" x 12-7/8"	\$139.48
302-837	SWC1CH	Cherry	1.0	14" x 14" x 12-7/8"	139.48
302-838	SWC1MA	Maple	1.0	14" x 14" x 12-7/8"	139.48
302-839	SWC1VI	Black vinyl	1.0	14" x 14" x 12-7/8"	98.70
302-840	SWC2BK	Gloss black	2.0	17" x 17" x 15-7/8"	179.65
302-841	SWC2CH	Cherry	2.0	17" x 17" x 15-7/8"	179.65
302-842	SWC2MA	Maple	2.0	17" x 17" x 15-7/8"	179.65
302-843	SWC2VI	Black vinyl	2.0	17" x 17" x 15-7/8"	124.85
302-844	SWC3BK	Gloss black	3.0	19-1/8" x 19-1/8" x 18"	199.80
302-845	SWC3CH	Cherry	3.0	19-1/8" x 19-1/8" x 18"	199.80
302-846	SWC3MA	Maple	3.0	19-1/8" x 19-1/8" x 18"	199.80
302-847	SWC3VI	Black vinyl	3.0	19-1/8" x 19-1/8" x 18"	139.78

Please visit [parts-express.com](http://parts-express.com) for more information about the SWC Series cabinets and replacement baffles.

**BUYOUT**

**Peerless/Vifa Buyout, Limited Quantities!**

Factory original replacements. Limited availability buyout, while supplies last.  
Please visit [parts-express.com](http://parts-express.com) for more information!

**vifa**

**Peerless**

## Peerless SDS 835004 6-1/2" Woofer 4 Ohm

- Premium sculpted stamped steel chassis
- Coated paper cone with rubber edge
- Shielded motor
- 40 watts RMS
- VC<sub>DIA</sub>: 1" • 4 ohms
- 38-6,000 Hz • Fs: 37.8 Hz • SPL: 89.5 dB 1W/1m • V<sub>AS</sub>: 1.38 cu. ft. • Q<sub>MS</sub>: 5.35
- Q<sub>ES</sub>: 0.27 • Q<sub>TS</sub>: 0.26 • X<sub>MAX</sub>: 3 mm
- Dimensions: A: 7.15" (6.45" across flats), B: 5.75", C: 3".



**WOW!**

**\$10<sup>00</sup>**  
EACH  
#299-250

Compare to \$40

## Peerless/Vifa BC25TG19-04 1" Dome Tweeter 4 Ohm

- Sculpted, recessed-loaded round 4-hole faceplate
- 1" textile dome
- Ferrofluid cooled voice coil
- Used by one of Europe's leading speaker system manufacturers



**\$12<sup>00</sup>**  
(4-UP)

- 50 watts RMS • VC<sub>DIA</sub>: 1" • 4 ohms • 1,000-20,000 Hz
- Fs: 1,070 Hz • SPL: 94 dB 2.83V/1m • Dimensions: A: 4-1/8", B: 3" plus notches for terminals, C: 1-1/4".

#279-175 ..... Compare to \$22.00 ..... **\$15<sup>00</sup>** (1-3)

## Peerless 811582 1" Dome Tweeter

- Compact, recessed-loaded round 4-hole faceplate
- 1" textile dome
- Great for lower power/higher crossover point designs
- 40 watts RMS • VC<sub>DIA</sub>: 1" • 8 ohms • 2,000-20,000 Hz
- Fs: 1,070 Hz • SPL: 89 dB 1W/1m • Dimensions: A: 3-1/8", B: 2-1/2", C: 15/16".



**\$12<sup>50</sup>**  
(4-UP)

#279-179 ..... Compare to \$30.00 ..... **\$14<sup>00</sup>** (1-3)

## Peerless 830872 4" HDS Shielded Woofer

- Cast truncated frame
- Shorting rings reduce distortion
- Nomex cone for well-damped, accurate response
- Magnetically shielded
- 50 watts RMS • VC<sub>DIA</sub>: 1" • 8 ohms • 85-10,000 Hz
- Fs: 85 Hz • SPL: 87 dB 1W/1m • V<sub>AS</sub>: 0.10 cu. ft.
- Q<sub>TS</sub>: 0.42 • X<sub>MAX</sub>: 2.5 mm • Dimensions: A: 4-3/4", 4-1/4" across flats, B: 3-3/4", C: 2-3/4".



**\$27<sup>50</sup>**  
(4-UP)

#299-240 ..... Compare to \$43.00 ..... **\$29<sup>00</sup>** (1-3)

## Peerless 830862 5-1/4" HDS Shielded Woofer

- Shielded magnet structure
- Diecast truncated frame
- Treated Nomex cone with rubber surround
- 110 watts RMS • VC<sub>DIA</sub>: 1" • 8 ohms
- 57-7,000 Hz • Fs: 58.5 Hz • SPL: 87 dB 1W/1m • V<sub>AS</sub>: 0.31 cu. ft. • Q<sub>TS</sub>: 0.49 • X<sub>MAX</sub>: 3.5 mm • Dimensions: A: 6"; 5.29" across flats, B: 4.75", C: 3".



**\$27<sup>50</sup>**  
(4-UP)

#299-242 ..... Compare to \$45.00 ..... **\$29<sup>00</sup>** (1-3)

## Peerless 830586 8" SLS Shielded Woofer 4 Ohm

- Premium sculpted stamped steel chassis
- Vented pole piece and under-spider venting
- Treated long-fiber paper cone with rubber edge
- Magnetically shielded
- 125 watts RMS • VC<sub>DIA</sub>: 1-1/2" • 4 ohms
- 45-2,000 Hz • Fs: 45 Hz • SPL: 85 dB 1W/1m
- V<sub>AS</sub>: 0.72 cu. ft. • Q<sub>TS</sub>: 0.83 • X<sub>MAX</sub>: 8 mm
- Dimensions: A: 8-3/16", B: 7", C: 4-1/4".



**\$32<sup>00</sup>**  
(4-UP)

#299-246 ..... Compare to \$52.00 ..... **\$35<sup>00</sup>** (1-3)

## Peerless 830643 5-1/4" SDS Shielded Woofer

- Premium sculpted "pincushion" stamped steel chassis
- Poly cone with rubber edge
- Shielded motor
- 60 watts RMS • VC<sub>DIA</sub>: 1" • 8 ohms • 78.5-6,000 Hz • Fs: 78.5 Hz • SPL: 88 dB 2.83V/1m • V<sub>AS</sub>: 0.18 cu. ft. • Q<sub>TS</sub>: 0.56 • X<sub>MAX</sub>: 3 mm • Dimensions: A: 6" diagonally, 5-1/4" nominal, B: 4-5/8", C: 3".



**\$14<sup>50</sup>**  
(4-UP)

#299-244 ..... Compare to \$39.00 ..... **\$19<sup>88</sup>** (1-3)

## Peerless/Vifa PL18W009-04 7" Woofer 4 Ohm

- Diecast magnesium chassis
- Through-frame under-spider venting
- Treated NRSC paper cone with rubber edge
- 100 watts RMS • VC<sub>DIA</sub>: 1-1/2" • 4 ohms
- 37-4,000 Hz • Fs: 37 Hz • SPL: 89 dB 2.83V/1m
- V<sub>AS</sub>: 0.88 cu. ft. • Q<sub>TS</sub>: 0.29 • X<sub>MAX</sub>: 6 mm
- Dimensions: A: 7-1/8", B: 5-3/4", C: 3-1/4".



**\$46<sup>68</sup>**  
(4-UP)

#299-225 ..... Compare to \$90.00 ..... **\$51<sup>87</sup>** (1-3)

## Vifa TC9FD-05-16 3-1/2" Full Range Driver

- Polymer chassis
- Poly cone and dust cap, rubber surround
- Pre-attached 47 uF capacitor provides 6 dB/octave 200 Hz HP filter
- 10 watts RMS • VC<sub>DIA</sub>: 20 mm
- 16 ohms • Re: 11.47 ohms
- 87-15,000 Hz • Fs: 115 Hz • SPL: 83.3 dB 1W/1m • V<sub>AS</sub>: 0.05 cu. ft. • Q<sub>TS</sub>: 1.12 • X<sub>MAX</sub>: 2 mm
- Dimensions: A: 3-5/16" (3-13/16" diagonally ear-to-ear), B: 3-1/16", C: 1-11/16".



**\$9<sup>00</sup>**  
(4-UP)

#299-223 ..... Compare to \$15.00 ..... **\$10<sup>50</sup>** (1-3)

## Peerless 830876 10" XXLS Subwoofer 4 Ohm

- 12.5 mm of linear excursion
- Cast aluminum frame
- Massive stacked magnet with cosmetic boot
- 175 watts RMS • VC<sub>DIA</sub>: 2"
- 4 ohms • 39-2,000 Hz • Fs: 39 Hz
- SPL: 92 dB 2.83V/1m • V<sub>AS</sub>: 0.83 cu. ft.
- Q<sub>TS</sub>: 0.44 • X<sub>MAX</sub>: 12.5 mm
- Dimensions: A: 10-5/8", B: 9-3/8", C: 6".



**\$116<sup>06</sup>**  
(4-UP)

#299-238 ..... Compare to \$198.00 ..... **\$128<sup>96</sup>** (1-3)



**Famous Maker Buyout**

Parts Express has purchased a limited quantity of factory closeout drivers, so act fast!

**BUYOUT**

**Waveguide-Loaded 1/2" Mylar Tweeters**

- Low mass Mylar diaphragm
- Ferrofluid cooled voice coil
- Recommended for higher crossover points

Clean and efficient Mylar diaphragm tweeters. Flush mount into 7/16" (TW5-073LR) or 5/8" (TW5-120LR) depth recess.

**TW5-073LR Tweeter**

- 30 watts RMS • VCDIA: 1/2" • 8 ohms
- 3,000-20,000 Hz • Fs: 3,000 Hz • SPL: 90 dB 1W/1m
- Dimensions: A: 2-7/8", B: 2-1/8", C: 1-1/8"

#279-060 ..... Compare to \$10.00 **\$5<sup>25</sup>** (1-3)

**TW5-120LR Tweeter**

- 20 watts RMS • VCDIA: 1/2" • 8 ohms • 4,000-20,000 Hz • Fs: 4,000 Hz • SPL: 91 dB 1W/1m • Dimensions: A: 4-3/4", B: 1-7/8", C: 2"

#279-062 ..... Compare to \$13.00 **\$7<sup>00</sup>** (1-3)

**W3-LK76-PBK 3" Paper Cone Shielded Woofer 4 Ohm**

- High gloss black treated paper cone with rubber surround
- Extended frequency range
- Magnetically shielded

Smooth and efficient extended range woofer. Good for super-compact 2-way systems or as a dedicated midrange driver.

**Specifications:** • Power handling: 25 watts RMS/50 watts max • VCDIA: 3/4" • Le: 0.26 mH • Impedance: 4 ohms • Re: 3.4 ohms • Frequency response: 110-13,000 Hz • Fs: 117 Hz • SPL: 85.5 dB 1W/1m • VAS: 0.04 cu. ft. • QMS: 2.95 • QES: 0.70 • QTS: 0.57 • XMAX: 1.5 mm • Dimensions: A: 3-1/16" (3-5/8" diagonally), B: 2-3/4", C: 2"

#299-066 ..... Compare to \$13.00 **\$7<sup>00</sup>** (1-3)

**W5-KA538A-SH 5-1/4" Shielded Woofer 4 Ohm**

- Paper cone with rubber surround
- Magnetically shielded

Excellent midbass driver for music playback or home theater systems. Parameters are optimized for closed box designs.

**Specifications:** • Power handling: 30 watts RMS/60 watts max • VCDIA: 1" • Le: 0.53 mH • Impedance: 4 ohms • Re: 3.2 ohms • Frequency response: 70-6,000 Hz • Fs: 74 Hz • SPL: 86.5 dB 1W/1m • VAS: 0.28 cu. ft. • QMS: 2.97 • QES: 1.10 • QTS: 0.80 • XMAX: 3.5 mm • Dimensions: A: 5-5/8", B: 4-5/8", C: 3-1/4"

#299-065 ..... Compare to \$20.00 **\$10<sup>80</sup>** (1-3)

**W6-KA638-SH 6-1/2" Paper Cone Shielded Woofer**

- High gloss treated paper cone with rubber surround
- Large diameter spider for improved excursion
- Magnetically shielded

Excellent midbass driver for music playback or home theater systems. Parameters are optimized for closed box designs.

• 40 watts RMS • VCDIA: 1" • 8 ohms • 55-6,000 Hz • Fs: 67 Hz • SPL: 85.1 dB 1W/1m • VAS: 0.63 cu. ft. • QTS: 1.00 • XMAX: 3 mm • Dimensions: A: 6-1/2", B: 5-3/4", C: 3-5/8"

#299-063 ..... Compare to \$25.00 **\$14<sup>00</sup>** (1-3)

**5-1/2" & 6-1/2" Poly Cone Shielded Woofers 12 Ohm**

- Blue aluminum-look poly cone with rubber surround
- Raised vented spider
- 4-layer/split winding 1" voice coil on Kapton former
- Magnetically shielded
- With and without metal cap on magnetic assembly

Ideal woofers for dual-driver MTM home theater or music playback applications. Truncated frames allow optimized component-to-component spacing. 6-1/2" models available with and without metal cap on shielded magnetic assembly.

**WFR-05BV02S 5-1/2" Woofer (with cup)**

- 40 watts RMS • VCDIA: 1" • 12 ohms • 65-6,000 Hz • Fs: 68 Hz • SPL: 86.5 dB 1W/1m • VAS: 0.26 cu. ft. • QTS: 0.72 • XMAX: 4 mm • Dimensions: A: 6-1/4" x 6", B: 5", C: 3-1/2"

#299-062 ..... Compare to \$20.00 **\$10<sup>50</sup>** (1-3)

**WFR-06BV02S 6-1/2" Woofer (with cup)**

- 50 watts RMS • VCDIA: 1" • 12 ohms • 55-6,000 Hz • Fs: 55 Hz • SPL: 88 dB 1W/1m • VAS: 0.55 cu. ft. • QTS: 0.58 • XMAX: 5 mm • Dimensions: A: 7" x 6-3/4", B: 5-3/4", C: 3-1/2"

#299-060 ..... Compare to \$25.00 **\$14<sup>00</sup>** (1-3)

**WFR-06BV03B 6-1/2" Woofer (without cup)**

- 50 watts RMS • VCDIA: 1" • 12 ohms • 60-6,000 Hz • Fs: 64 Hz • SPL: 89 dB 1W/1m • VAS: 0.40 cu. ft. • QTS: 0.58 • XMAX: 5 mm • Dimensions: A: 7" x 6-3/4", B: 5-3/4", C: 3-1/2"

#299-061 ..... Compare to \$25.00 **\$14<sup>00</sup>** (1-3)

**8" Paper Cone Woofers 12 Ohm**

- High gloss black treated paper cone with rubber surround
- 4-layer voice coil
- Very efficient—over 91 dB SPL
- Available with and without magnetic shielding

Well-made, attractive, and efficient 8" woofers that will work in vented or closed box systems.

**W8-12T 12PS 8" Shielded Woofer**

- 40 watts RMS • VCDIA: 1" • 12 ohms • 40-3,500 Hz • Fs: 41 Hz • SPL: 92 dB 1W/1m • VAS: 3.2 cu. ft. • QTS: 0.53 • XMAX: 2 mm • Dimensions: A: 8", B: 7-1/2", C: 4-1/8"

#299-067 ..... Compare to \$25.00 **\$14<sup>00</sup>** (1-3)

**W8-12T 12P 8" Woofer**

- 40 watts RMS • VCDIA: 1" • 12 ohms • 40-12,000 Hz • Fs: 43 Hz • SPL: 91.5 dB 1W/1m • VAS: 2.7 cu. ft. • QTS: 0.56 • XMAX: 2 mm • Dimensions: A: 8", B: 7-1/2", C: 3-1/2"

#299-068 ..... Compare to \$25.00 **\$14<sup>00</sup>** (1-3)

**BUYOUT**

## Famous Maker Factory Buyout!

This famous brand is one of the most highly reviewed and honored home theater speaker manufacturers today. Hurry, supplies are limited!

### 3/8" Mylar Dome Shielded Tweeters

- Phase correction faceplate
- Lightweight, responsive Mylar diaphragm
- High efficiency
- Your choice of black or white

Perfect replacement tweeters for the approximately 28.3 billion compact plastic speaker systems in the world today. Available in black and white versions.

- 15 watts RMS • VC<sub>DIA</sub>: 3/8" • 8 ohms
- 5,000-20,000 Hz • Fs: 2,400 Hz
- SPL: 89 dB 1W/1m • Dimensions: A: 2" x 2", B: 1-3/4", C: 1".

#279-112 (white)

#279-237 (black) ..... Compare to \$8.00

### 3/4" Soft Dome Neodymium Tweeter

- Textile dome
- Ferrofluid cooled
- Acoustically damped to lower resonance
- Aluminum VC former
- Compact faceplate

This tweeter's neodymium magnet and damped textile dome produce premium high frequency performance from a diminutive form factor.

- 20 watts RMS • VC<sub>DIA</sub>: 3/4" • 6 ohms • 3,000-20,000 Hz • Fs: 1,480 Hz • SPL: 90 dB 1W/1m
- Dimensions: A: 2" x 2", B: 1-13/16", C: 1".

#279-114 ..... Compare to \$13.00

### 3/4" Mylar Dome Shielded Tweeter

- Low mass Mylar dome extends HF response
- Phase correction device also protects diaphragm
- Ferrofluid cooled voice coil
- Magnetically shielded ceramic motor structure
- Satin black plastic faceplate

Versatile tweeter with wide response and handy faceplate dimensions.

- 30 watts RMS • VC<sub>DIA</sub>: 3/4" • 4 ohms
- 4,000-20,000 Hz • Fs: 2200 Hz • SPL: 88 dB 1W/1m • Dimensions: A: 3-1/8" x 3-1/8", B: 2-3/4", C: 1-3/8".

#279-116 ..... Compare to \$15.00

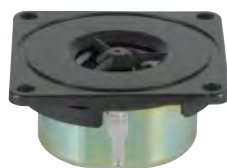
### 5-1/4" Poly Cone Shielded Woofer

- Cosmetic plastic trimmed metal frame
- Aluminized poly cone with rubber surround
- Treated cloth dust cap
- 1" VC with aluminum former
- Magnetically shielded

Attractive 5-1/4" poly cone driver is perfect for replacement, or new projects. Smooth and accurate bass and midrange response.

- 50 watts RMS • VC<sub>DIA</sub>: 1" • 8 ohms • 60-5,500 Hz • Fs: 58 Hz • SPL: 86.5 dB 1W/1m • V<sub>AS</sub>: 0.35 cu. ft. • Q<sub>TS</sub>: 0.59 • X<sub>MAX</sub>: 3 mm • Dimensions: A: 5-3/8" (6-1/2" diagonally), B: 4-3/4", C: 3-5/8".

#299-150 ..... Compare to \$25.00



**\$2.00**  
(4-UP)



**\$4.20**  
(4-UP)



**\$5.44**  
(4-UP)



**\$10.16**  
(4-UP)

### 1" Soft Dome Neodymium Tweeter 4 Ohm

- Truncated face plate for close driver spacing
- Ferrofluid cooled voice coil
- Flat frequency response

Ferrofluid-cooled, this tweeter has good power handling capacity, and its excellent performance promotes quick, simple crossover designs. Great for compact home theater and multimedia systems.

- 25 watts RMS • 4 ohms • 3,000-20,000 Hz
- Fs: 1400 Hz • SPL: 87 dB 2.83V/1m
- Dimensions: A: 2-3/4" by 2-1/8", B: 1-3/4", C: 1".

#279-234 ..... Compare to \$15.00



**\$5.48**  
(4-UP)

### 3-1/2" Poly Cone Midbass

- Vented screen dust cap
- Light but strong poly cone
- Aluminum former
- Rubber surround
- Extended range

Extended range poly cone driver for compact 2-way systems as well as dedicated midrange applications.

- 25 watts RMS • VC<sub>DIA</sub>: 3/4" • 8 ohms • 130-14,000 Hz • Fs: 137 Hz • SPL: 86 dB 1W/1m • V<sub>AS</sub>: 0.06 cu. ft. • Q<sub>TS</sub>: 1.19 • X<sub>MAX</sub>: 2 mm • Dimensions: A: 3-3/8" (4-1/4" diagonally), B: 3-1/8", C: 1-1/2".

#299-146 ..... Compare to \$17.00



**\$6.32**  
(4-UP)

### 4" Poly Cone Shielded Midbasses

- Cosmetic plastic trimmed metal frame
- Poly cone with rubber surround
- Treated cloth dust cap
- 1" VC with aluminum former
- Available in black or aluminized silver-gray cone versions
- Magnetically shielded

Well-made 4" poly cone drivers deliver smooth midrange and punchy bass in compact 2-way systems. They also excel when implemented in dedicated midrange designs.

- Specifications (both versions):**
- 40 watts RMS
  - VC<sub>DIA</sub>: 1" • 8 ohms • 100-8,000 Hz • Fs: 105 Hz
  - SPL: 88 dB 1W/1m • V<sub>AS</sub>: 0.11 cu. ft. • Q<sub>TS</sub>: 0.82
  - X<sub>MAX</sub>: 3 mm • Dimensions: A: 4-1/4" (5-1/8" diagonally), B: 3-3/4", C: 2-5/8".

#299-148 (Silver-gray cone)

#299-152 (Black cone) ..... Compare to \$20.00



**\$7.12**  
(4-UP)

### 6" Poly Cone Shielded Woofer 4 Ohm

- Underhung 1" VC on aluminum former
- Vented dust cap
- Gray poly cone with rubber surround
- Magnetically shielded

Very well engineered and constructed poly cone woofer provides a surprising amount of low distortion bass, thanks to its underhung voice coil and extended pole piece.

- 60 watts RMS • VC<sub>DIA</sub>: 1" • 4 ohms • 55-4,000 Hz
- Fs: 57 Hz • SPL: 89 dB 1W/1m • V<sub>AS</sub>: 0.59 cu. ft. • Q<sub>TS</sub>: 0.55 • X<sub>MAX</sub>: 3.5 mm • Dimensions: A: 6-1/8" (6-5/8" diagonally), B: 5-3/4", C: 3-1/2".

#299-154 ..... Compare to \$29.00



**\$10.08**  
(4-UP)



**Jamo**

**Jamo Buyout, Direct from Europe! Limited Quantities!**

Factory original replacements. Limited availability buyout, while supplies last

**BUYOUT**

### 20602 2-3/4" Square Frame Sealed Back Mid/Tweeter

Paper cone with polymer dome dust cap and damped edge. Manufactured by Sony.

- 15 watts RMS • 8 ohms • 1,500-14,000 Hz
- SPL: 88 dB 1W/1m • Dimensions: A: 2-3/4", 3-1/2" diagonally, B: 2-1/2", C: 1-1/8"

#299-920 ..... Compare to \$9.00 ..... **\$3<sup>50</sup>** (1-3)



**\$2<sup>80</sup>**  
(4-UP)

### 22475 4" Square Frame Midrange

Smooth, extended response thanks to the hand-treated paper cone with damped paper edge.

- 15 watts RMS • 8 ohms • 144-10,500 Hz
- SPL: 86 dB 1W/1m • Dimensions: A: 4-1/8"; 5-1/8" diagonally, B: 3-3/4", C: 1-1/2"

#299-945 ..... Compare to \$12.00 ..... **\$4<sup>00</sup>** (1-3)



**\$3<sup>50</sup>**  
(4-UP)

### 20476 4-1/2" Square Frame Midrange 16 Ohm

Damped paper edge. Great for midrange or low power full range applications.

- 15 watts RMS • 16 ohms • 159-8,500 Hz
- SPL: 86 dB 1W/1m • Dimensions: A: 4-1/16", 5-1/16" diagonally, B: 3-3/4", C: 1-3/8"

#299-915 ..... Compare to \$12.00 ..... **\$4<sup>00</sup>** (1-3)



**\$3<sup>50</sup>**  
(4-UP)

### 20305 4" Shielded Woofer 4 Ohm

This stout woofer features an attractive stamped steel basket, well-damped polypro-pylene cone, and a treated screen dust cap. Magnetically shielded.

- 40 watts RMS • 4 ohms • 86-10,000 Hz
- SPL: 87 dB 1W/1m • Dimensions: A: 4-3/8"; 4-7/8" diagonally, B: 3-3/4", C: 2-7/8"

#299-947 ..... Compare to \$24.00 ..... **\$7<sup>00</sup>** (1-3)



**\$6<sup>00</sup>**  
(4-UP)

### 20307 5-1/2" Treated Paper Cone Woofer

Smooth-sounding 5-1/2" woofer with treated paper cone and foam surround.

- 40 watts RMS • 8 ohms
- 40-4,000 Hz • SPL: 84 dB 1W/1m
- Dimensions: A: 6", B: 4-3/4", C: 2-1/2"

#299-902 ..... Compare to \$18.00 ..... **\$8<sup>00</sup>** (1-3)



**\$7<sup>00</sup>**  
(4-UP)

### 20422 6" Treated Paper Cone Woofer 6 Ohm

Premium woofer with treated paper cone, rubber surround, and 4-layer VC. Oversized stamped steel basket.

- 80 watts RMS • 6 ohms • 40-3,500 Hz
- SPL: 89 dB 1W/1m • Dimensions: A: 6-1/16", B: 4-3/4", C: 2-5/8"

#299-914 ..... Compare to \$22.00 ..... **\$12<sup>00</sup>** (1-3)



**\$11<sup>00</sup>**  
(4-UP)

### 20132/23455 3/8" Polymer Dome Tweeter

- Phase plug-loaded faceplate controls dispersion
- Ferrofluid-cooled 3/8" voice coil

- 20 watts RMS • 8 ohms • 1,900-21,000 Hz • SPL: 87 dB 1W/1m • Dimensions: A: 2-7/8", B: 2", C: 3/4"

#299-933 ..... Compare to \$12.00 ..... **\$3<sup>75</sup>** (1-3)



**\$3<sup>15</sup>**  
(4-UP)

### 20134 1" Soft Dome Tweeter

- Textile dome with aluminum VC former
- Smooth response
- Round plastic faceplate
- Ferrofluid-cooled voice coil
- Made by Philips for JAMO

- 40 watts RMS • 8 ohms • 1,400-19,000 Hz
- SPL: 86 dB 1W/1m • Dimensions: A: 3-3/8", B: 3-1/8", C: 7/8"

#299-942 ..... Compare to \$23.00 ..... **\$5<sup>00</sup>** (1-3)



**\$4<sup>50</sup>**  
(4-UP)

### 20300 1-1/8" Soft Dome Tweeter

- High-profile textile dome
- Wide dispersion and smooth response
- Ferrofluid-cooled voice coil

**Specifications:** • Power handling: 40 watts RMS/80 watts max • VC DIA: 1-1/8" • Impedance: 8 ohms • Re: 5.84 ohms • Frequency response: 1,000-20,000 Hz • Fs: 1,750 Hz • SPL: 89 dB 1W/1m • Dimensions: A: 3-1/2" x 5", B: 3" plus notches for terminals, C: 1"

#299-953 ..... Compare to \$24.00 ..... **\$8<sup>00</sup>** (1-3)



**\$6<sup>40</sup>**  
(4-UP)

### 20470 4-1/2" Sealed Back Midrange

Fully enclosed paper cone midrange with damped paper edge.

- 25 watts RMS • 8 ohms
- 700-6,000 Hz • SPL: 90 dB 1W/1m
- Dimensions: A: 4-3/4", 5-1/16" diagonally, B: 4-1/4", C: 1-5/8"

#299-952 ..... Compare to \$12.00 ..... **\$5<sup>00</sup>** (1-3)



**\$4<sup>25</sup>**  
(4-UP)

### 20435 5-1/2" Fiberglass Cone Woofer

Woven fiberglass cone, soft plastic dust cap, rubber half roll surround.

- 40 watts RMS • 4 ohms
- 40-4,000 Hz • SPL: 87 dB 1W/1m
- Dimensions: A: 5-3/4", B: 4-5/8", C: 2-5/8"

#299-935 ..... Compare to \$26.00 ..... **\$7<sup>00</sup>** (1-3)



**\$6<sup>00</sup>**  
(4-UP)

### 20418 8" Woofer

8" woofer with treated paper cone and foam surround. The four-layer voice coil provides increased power handling and bass response.

- 40 watts RMS • 8 ohms • 40-4,000 Hz • SPL: 90 dB 1W/1m • Dimensions: A: 8-1/8", B: 7-1/8", C: 3-1/4"

#299-913 ..... Compare to \$24.00 ..... **\$9<sup>00</sup>** (1-3)



**\$8<sup>00</sup>**  
(4-UP)

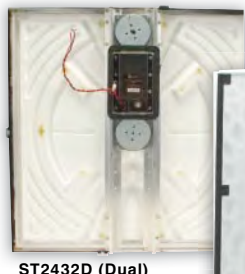
Clearance

**FINAL MARKDOWN!** We've slashed our already low prices to move these out!

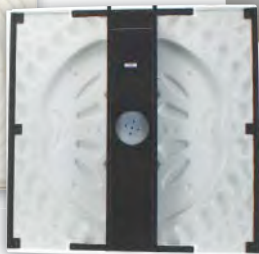
## Sound Advance SpeakerTiles



- Fast, easy T-bar suspended ceiling grid installation – no cutting
- Unique Planar Diaphragm Technology™ provides amazing fidelity
- Wide, hemispherical dispersion reduces number of required sound sources
- Available in 1-way single driver and 2-way dual driver versions
- Available in a variety of ceiling tile finishes
- Recommended for indoor or weather-protected outdoor environments
- 8 ohm or 70V applications



ST2432D (Dual)



ST2416S (Single)



Also available:

### Sound Advance PBB 2.0 SpeakerTile Backbox

#249-455 ..... \$86.00<sub>LIST</sub> **\$20<sup>00</sup>** EACH

*Quantities are limited!*

Part #	Mfg. #	Drivers	Frequency Response	Power Watts RMS	Style/Finish	Pair/Each	List Price	Regular Price	Closeout Price
249-456	ST2416S	One	60-15,000 Hz	40	White/Smooth	Pair	\$398.00	<del>\$278.00</del> <sup>PR</sup>	<del>\$49.00</del> <sup>PR</sup>
249-457	ST2416S-3D1	One	60-15,000 Hz	40	Fine Fissured	Pair	398.00	<del>278.00</del> <sup>PR</sup>	<del>49.00</del> <sup>PR</sup>
249-458	ST2416S-3D2	One	60-15,000 Hz	40	Cortega	Pair	398.00	<del>278.00</del> <sup>PR</sup>	<del>49.00</del> <sup>PR</sup>
249-459	ST2416S-3D21	One	60-15,000 Hz	40	Cirrus	Pair	398.00	<del>278.00</del> <sup>PR</sup>	<del>49.00</del> <sup>PR</sup>
249-460	ST2416S-3D4	One	60-15,000 Hz	40	Fissured	Pair	398.00	<del>278.00</del> <sup>PR</sup>	<del>49.00</del> <sup>PR</sup>
249-461	ST2416S-3D7	One	60-15,000 Hz	40	Optima/Ultima	Pair	398.00	<del>278.00</del> <sup>PR</sup>	<del>49.00</del> <sup>PR</sup>
249-463	ST2432D-3D2	Two	40-19,000 Hz	75	Cortega	Each	279.00	<del>195.00</del> <sup>EA</sup>	<del>39.00</del> <sup>EA</sup>
249-464	ST2432D-3D21	Two	40-19,000 Hz	75	Cirrus	Each	279.00	<del>195.00</del> <sup>EA</sup>	<del>39.00</del> <sup>EA</sup>
249-465	ST2432D-3D4	Two	40-19,000 Hz	75	Fissured	Each	279.00	<del>195.00</del> <sup>EA</sup>	<del>39.00</del> <sup>EA</sup>
249-466	ST2432D-3D7	Two	40-19,000 Hz	75	Optima/Ultima	Each	279.00	<del>195.00</del> <sup>EA</sup>	<del>39.00</del> <sup>EA</sup>

## Sound Advance ST2416S SpeakerTiles

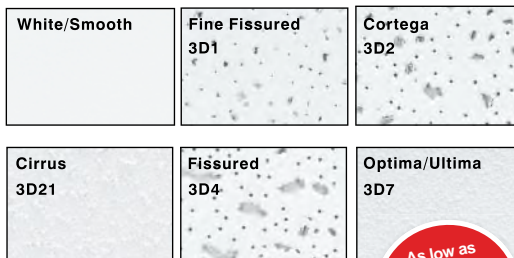
The ST2416S is a one-way, full-range device. **Sold in pairs.**

**Specifications:** • Radiating surface: 549 sq. in. planar diaphragm • Driver system: 0.82 lb. magnet with 1.02" voice coil • Dimensions: 23-3/4" H x 23-3/4" W x 4-5/16" D.

## Sound Advance ST2432D SpeakerTiles

The ST2432D is a two-way, full-range device that utilizes a crossover centered at 1,200 Hz, with 12 dB per octave slopes for both low-pass and high-pass sections. **Sold individually.**

**Specifications:** • Radiating surface: 549 sq. in. planar diaphragm • Tweeter system: 0.82 lb magnet with 1.02" voice coil and 1,200 Hz, 12 dB/octave high-pass crossover • Woofer system: 0.82 lb. magnet with 1.02" voice coil and 1,200 Hz, 12 dB/octave low-pass crossover • Dimensions: 23-7/16" H x 23-7/16" W x 3" D.



**BLOWOUT!**

As low as  
**\$39<sup>00</sup>**  
EACH

## 8" Full-Range Ceiling Speaker

**BUYOUT**

Well-constructed public address speaker features a curvilinear paper cone, treated cloth accordion surround, stamped steel frame, 10 oz. ceramic ferrite magnet, 1" voice coil, and an 8 ohm nominal impedance. Buyout, limited quantities.

**Specifications:** • Power handling: 30 watts RMS/60 watts max • VC/DIA: 1" Le: 0.68 mH • Impedance: 8 ohms • Re: 5.6 ohms • Frequency response: 100-16,000 Hz • Fs: 107 Hz • SPL: 89 dB 1W/1m • VAS: 0.32 cu. ft. • QMS: 5.49 • QES: 2.42 • QTS: 1.68 • XMAX: 2 mm • Dimensions: A: 8-1/16", B: 7-5/16", C: 3-1/4".



#309-050 ..... Compare to \$25 **\$950** (1-11) **\$780** (12-UP)

## Atlas Sound AA35 35 Watt 3-Channel Mixer/Amplifier

The Atlas Sound AA35 is a 3 input mixer/amplifier designed for distributed business paging and background music (BGM) systems, small to medium speech privacy systems, and applications where music on-hold (MOH) plus paging is required.

**Specifications:** • Power rating: 35 watts RMS (25V, 70.7V, or 8 ohms) • Output connections: Main: 8 ohm, 25V, and 70.7V; Zone 2: 8 ohm (unbalanced 1W) or 600 ohm (balanced 1.5V) • Dimensions: 8.27" W x 3.66" H x 10.88" D • Rack spaces: 2U high, 1/2U wide

#242-900 ..... \$208.00<sub>LIST</sub> **\$178<sup>00</sup>** Regularly **\$167<sup>25</sup>** EACH

## Pyramid 100 Watt Rackmount PA Amplifier

With quality features such as a frequency response up to 60-25,000 Hz, less than 0.05% THD, and adjustable feedback notch filter, this amp really competes with higher-priced models.

Four microphone inputs (1/4"/XLR) with separate level controls (Mic 4 can be switched for a Phono input), separate CD/Aux input and a unique Mix Bus connection for stacking 2 of these units in line to expand your system as needed. Spring loaded speaker terminals are provided with 4, 8, and 16 ohm outputs, plus a 70 volt line output. Dimensions: 4-1/4" H x 19" W x 12" D.



#300-218 ..... \$299.49<sub>LIST</sub> Regularly **\$179<sup>63</sup>** **\$153<sup>00</sup>** EACH



**Special**





## Dayton Audio Public Address Horns

Affordable, durable horns for demanding sound reinforcement applications. The re-entrant style horn flare design provides an expansion path that is longer than conventional straight horns; this ensures that the lowest possible frequency response can be achieved. The Dayton Audio RPH-16 and RPH-20 PA horns are formed from light weight aluminum and painted with a durable polyester finish, so you know they will survive years of exposure to sun and rain. Great for indoor or outdoor applications, sturdy mounting yoke for precise alignment included. Standard 1-3/8"-18 threaded throat; available in 16" and 20" mouth diameter.



#300-194 (16" horn) .....\$32.99<sub>LIST</sub> **\$15<sup>99</sup>** (1-3) **\$14<sup>76</sup>** (4-UP)  
#300-196 (20" horn) .....\$38.99<sub>LIST</sub> **\$18<sup>17</sup>** (1-3) **\$17<sup>28</sup>** (4-UP)

## EV Cobreflex III Sectoral Horn

The Cobreflex® III folded sectoral horn from EV/University Sound features a patented design that eliminates high frequency phase cancellation and improves intelligibility. Ideal for use with the ID Series and 1800 Series horn drivers, the Cobreflex® III is compatible with any horn driver with a 1" throat and a 1-3/8"-18 thread. The folded sectoral design ensures higher SPLs and a low cutoff frequency in a compact package.



**Specifications:** • Beamwidth (@ 2 kHz): 100° H x 60° V • Directivity factor (Q): 15.9 @ 2 kHz • Lower useable limit: 250 Hz (minimum) • Dimensions: 14.5" H x 27.5" W x 15" D.

#300-160 .....\$200.00<sub>LIST</sub> **\$179<sup>00</sup>** (1-3) **\$172<sup>00</sup>** (4-UP)

## Fourjay 8" Warehouse Speaker

High quality speaker for music and paging in open warehouse/retail ceilings. Precut hole for fast mounting to structural beams. Contemporary, all white baffle enclosure. 8", 10 oz. dual cone speaker with 25V and 70V line matching transformer installed. Frequency response: 80-20,000 Hz. Paintable. Dimensions: 11" x 4-3/8". Made in the USA.



#300-345 .....Regularly **\$48<sup>48</sup>** **\$38<sup>00</sup>** EACH

## Fourjay ST4-CR8 8" Ceiling Speaker Assembly

Factory assembled and pre-tested to pass the highest quality standards. Compact 11" diameter is less conspicuous than comparable models. The Fourjay ST4-CR8 utilizes a molded polystyrene grill with a non-glare ceiling white texture and is fitted with a 25/70 volt transformer.



#300-346 .....Regularly **\$29<sup>36</sup>** **\$22<sup>00</sup>** EACH

**Also available:**

#300-311 (PB8 Metal Drop Ceiling Bridge UL)....**\$10<sup>28</sup>** (1-5) **\$9<sup>06</sup>** (6-UP)  
#300-301 (PE8 Metal Protective Enclosure UL) ..**\$15<sup>65</sup>** (1-5) **\$12<sup>67</sup>** (6-UP)

## Dayton Audio D1075T 75W Driver with 70V Transformer

The Dayton Audio D1075T PA driver provides efficient, articulate sound and is designed to excel in the harshest environment.



**Special**



The phenolic-impregnated cloth diaphragm will resist years of continuous stress, and multiple-attenuation taps on the enclosed transformer permit easy adjustment of maximum output.

**Specifications:** • Nominal input: 70.7 volts • Power handling: 75 watts RMS (above 300 Hz) • Frequency response: 180-6,000 Hz • SPL: 110 dB 1W/1m • Transformer taps: 25, 30, 50, and 75 watts, plus 16 ohm bypass • Standard 1-3/8"-18 threaded mounting • D1075RD replacement diaphragm #300-192 • Dimensions: 5.5" dia. x 6" D.

#300-190 .....Regularly \$61.99<sub>LIST</sub> **\$49<sup>97</sup>** **\$37<sup>50</sup>** EACH

## Atlas Sound 70.7V Commercial Attenuators

- Available in stainless steel and Decora styles
- 10 attenuation steps plus positive off
- Mounts into most 1-gang boxes
- UL Listed



High-quality auto transformer series provides the advantages of excellent frequency response, low insertion loss, and reliable performance for volume control applications in 25 and 70.7V systems. Attenuation is accomplished in ten make-before-break steps plus positive off position. Contacts are silver plated for noise-free operation. Features a removable terminal block. Attenuation per step: 3 dB. Plate size: 1 gang. UL Listed/Standard: 813, 2043.

### AT Stainless Steel Series

- Includes stainless steel plate with stamped and filled dial scale and a skirted black knob

Part #	Mfg. #	Power Rating	Depth	List Price	Price (1-5)	Price (6-UP)
242-870	AT10	10 watts	2-1/8"	\$19.00	<b>\$16.93</b>	<b>\$16.09</b>
242-872	AT35	35 watts	2-1/8"	22.00	<b>19.43</b>	<b>18.46</b>
242-874	AT100	100 watts	2-1/2"	28.00	<b>26.07</b>	<b>24.78</b>

### AT Decora Series

- Includes white and ivory Decora style plastic plates with matching skirted knobs

Part #	Mfg. #	Power Rating	Depth	List Price	Price (1-5)	Price (6-UP)
242-871	AT10D	10 watts	2-1/8"	\$20.00	<b>\$18.51</b>	<b>\$17.58</b>
242-873	AT35D	35 watts	2-1/8"	23.00	<b>20.99</b>	<b>19.94</b>
242-875	AT100D	100 watts	2-1/2"	30.00	<b>27.65</b>	<b>26.28</b>

## Atlas Sound 417-8WD Sloped Front Wooden Baffle

This sloped front wooden baffle is ideal for installations that require the aesthetics of classic enclosure design, particularly classrooms, offices, reception areas, and retail outlets. Offered for use with 8" loudspeakers and features a baffle/enclosure with walnut grain laminate, black fabric cloth grille, and a 9.5° slope for directional sound dispersion. Mounting studs facilitate the installation of standard 8" loudspeakers. Dimensions: 9-1/2" W x 10-1/2" H x 5-1/2" (top) / 3-3/4" (bottom) D.



**Special**

#242-860 .....Regularly \$22.00<sub>LIST</sub> **\$19<sup>76</sup>** **\$17<sup>00</sup>** EACH

## B&C 18TBX100 18" Woofer

- Ventilated magnet assembly
- Low power compression
- Double spider
- Dual demodulation rings

**Specifications:** • Power handling: 1,000 watts RMS • VCDIA: 4" • Le: 1.6 mH • Impedance: 8 ohms • Re: 5.1 ohms • Frequency response: 35-1000 Hz • Fs: 34 Hz • SPL: 97 dB 1W/1m • Vas: 7.5 cu. ft. • QMS: 7.2 • QES: 0.37 • QTS: 0.35 • XMAX: 10 mm • Dimensions: A: 18", B: 16.6", C: 8.2".

#294-676..... \$534.51<sub>LIST</sub> **\$313<sup>49</sup>** (1-3) **\$297<sup>82</sup>** (4-UP)



**B&C SPEAKERS**

## Eminence Lab12 Generation II 12" Pro Subwoofer

Recommended for vented, sealed, and horn-loaded professional audio enclosures as a subwoofer. The driver features long-throw construction with a heavy-duty 12-spoke die-cast aluminum frame and Kevlar® reinforced paper cone. In a horn-loaded configuration, a pair of these 12" drivers can produce bass output comparable to 6 or 8 conventional 18" woofers. Also great as an automotive sub.

**Specifications:** • Power handling: 400 watts RMS/800 watts max • VCDIA: 2.5" • Le: 1.48 mH • Impedance: 6 ohms • Re: 4.29 ohms • Frequency range: 25-125 Hz • Magnet weight: 160 oz. • Fs: 22 Hz • Sensitivity: 89.2 dB 1W/1m • Vas: 4.4 cu. ft. • QMS: 13.32 • QES: 0.39 • QTS: 0.38 • XMAX: 13 mm • Dimensions: A: 12.32", B: 10.98", C: 6.44.

#290-570 ..... \$169.99<sub>LIST</sub> **\$156<sup>97</sup>** EACH



## Peavey Professional Crossovers

These cabinet-ready passive crossover networks are pre-engineered to provide all the frequency division and driver protection that you could need for your speaker system. The ECS®-150X subwoofer network design incorporates a broad tuning that makes it compatible with both 4 and 8 ohm woofers and high-pass speakers. The other networks in the series are designed to be used with 8 ohm speaker components, provide CD horn compensation, and feature SoundGuard™ overload protection on mid or high frequency drivers. Full range inputs are by 1/4" and Neutrik Speakon® connectors, and bi-amp inputs are through a unique Speakon® switching connector.



Part #	Mfg. #	Type	Crossover Frequency	RMS Power Handling	List Price	Price Each
294-323	ECS®-150X	2-Way	150 Hz	500W	\$136.49	<b>\$109.19</b>
294-324	ECS®-1800X	2-Way	1,800 Hz	500W	115.49	<b>92.39</b>
294-325	ECS®-1000X	2-Way	1,000 Hz	500W	115.49	<b>92.39</b>
294-326	ECS®-3X	3-Way	500 Hz/ 2,500 Hz	500W	167.99	<b>134.39</b>

## Dayton Audio High Frequency Waveguides

Dayton Audio waveguides reveal all of the articulate, accurate sound reproduction that your HF drivers are capable of delivering, whether the application is live sound, critical studio monitoring, or demanding home audio playback. Two versions are available, round or elliptical. Both are precision molded from high-performance plastic, and have industry-standard 1-3/8" x 18 TPI throats for screw-on style drivers.

Part #	Mfg. #	Shape	Lowest Rec. Xover Freq.	Nom. Coverage	Dimensions (H x W x D)	List Price	Regular Price	Special Price
270-308	H08RW	Round	2,200 Hz	75° conical	8" round x 4-3/4" D	\$12.99	<b>\$9.68</b>	<b>\$7.00</b>
270-310	H10RW	Round	1,600 Hz	75° conical	10" round x 5" D	14.99	<b>11.51</b>	<b>8.00</b>
270-312	H12RW	Round	1,200 Hz	75° conical	11-1/2" round x 5-1/4" D	17.99	<b>13.90</b>	<b>10.00</b>
270-314	H45E	Elliptical	3,500 Hz	80° horiz. x 50° vert.	4-11/16" x 4-5/8" x 3-1/8"	9.99	<b>6.35</b>	<b>4.00</b>
270-316	H07E	Elliptical	2,200 Hz	80° horiz. x 50° vert.	5-7/8" x 5-7/8" x 3-3/4"	10.99	<b>7.99</b>	<b>5.00</b>

## SELENIUM LOUDSPEAKERS

**Special**

### Selenium DH200E-E 1" Titanium Horn Driver

This 1" throat compression driver delivers exceptional smoothness, clarity, and detail. Features a titanium diaphragm and 1-3/4" Kapton voice coil. Utilizes standard 1-3/8"-18 TPI thread.

**Specifications:** • Power handling: 75 watts RMS/100 watts max • VCDIA: 1-3/4" • Impedance: 8 ohms • Fs: 1,500-20,000 Hz • SPL: 105 dB 1W/1m • Magnet weight: 15 oz. • Dimensions: dia.: 4-5/16", depth: 2-1/2".



#264-225 ..... \$39.00<sub>LIST</sub> **\$33<sup>38</sup>** Regularly **\$27<sup>00</sup>** EACH

### Selenium ST200 Super Tweeter

Selenium's ST200 super tweeter offers outstanding detail and clarity at the highest frequencies, without harshness. Thanks to its bullet-shaped horn design, the ST200 offers a longer throw 40° conical dispersion, and the plastic injected housing is stable and durable. The phenolic annular diaphragm is long-lasting, cost-effective, and more natural-sounding than metallic diaphragms.

**Specifications:** • Power handling: 70 watts RMS/140 watts program (above 5,000 Hz) • Dispersion: 40° H x 40° V • VCDIA: 1.75" • Impedance: 8 ohms • Frequency response: 2,000-20,000 Hz • SPL: 105 dB 1W/1m • Magnet weight: 7.72 oz. • Dimensions: 4.88" H x 4.53" W x 2.4" D.



#264-348 ..... \$20.54<sub>LIST</sub> **\$17<sup>46</sup>** Regularly **\$15<sup>00</sup>** EACH

### Selenium 6W4P 6" Woofer

**Specifications:** • Power handling: 100 watts RMS/400 watts peak • VCDIA: 1.25" • Le: 0.57 mH • Nominal impedance: 8 ohms • Re: 5.9 ohms • Frequency response: 80-9,000 Hz • Magnet weight: 19.8 oz. • Fs: 76 Hz • SPL: 91 dB 1W/1m • Vas: 0.28 cu. ft. • QMS: 6.7 • QES: 0.95 • QTS: 0.83 • XMAX: 2.3 mm • Dimensions: A: 6.54", B: 5.63", C: 2.9".



#264-422..... \$34.00<sub>LIST</sub> **\$29<sup>10</sup>** Regularly **\$26<sup>00</sup>** EACH

### Selenium 10PW3-SLF 10" PA Woofer

Outstanding as a 10" midrange. In PA applications, use two 10PW3s combined with a 15" or 18" low frequency driver and a high frequency driver in a single enclosure.

**Specifications:** • Power handling: 150 watts RMS/210 watts max • VCDIA: 1-3/4" • Le: .45 mH • Impedance: 8 ohms • Re: 6.1 ohms • Frequency response: 60-6,000 Hz • Magnet weight: 44 oz. • Fs: 73 Hz • SPL: 98 dB 1W/1m • Vas: 1.02 cu. ft. • QMS: 6.32 • QES: .73 • QTS: .66 • XMAX: 1.25 mm • Dimensions: A: 10", B: 9", C: 4-1/2".



#264-332..... \$56.00<sub>LIST</sub> **\$47<sup>94</sup>** Regularly **\$40<sup>00</sup>** EACH



**Special**



#270-316



## Dayton Audio XLR Adapters & Attenuators



Quickly and easily convert a 3-pin XLR input or output connection to 1/4" mono, 1/4" stereo (TRS), or RCA—and vice versa. For a quick fix, these rugged, metal shell XLR adapters are just what the doctor ordered. Note: XLR to 1/4" and XLR to RCA adapters are not impedance matching.



Part #	Mfg. #	Description	List Price	Price (1-4)	Price (5-UP)
240-410	XPR	In-line XLR phase reverser	\$12.99	\$9.90	\$9.40
240-412	XATT10	In-line XLR attenuator pad 10 dB	12.99	9.90	9.40
240-414	XATT20	In-line XLR attenuator pad 15 dB	12.99	9.90	9.40
240-416	XATT30	In-line XLR attenuator pad 20 dB	12.99	9.90	9.40
240-418	XCFF	XLR female/female coupler	7.99	5.89	5.60
240-420	XCMM	XLR male/male coupler	7.99	5.89	5.60
240-422	XFQFM	XLR female to 1/4" mono female	7.99	5.89	5.60
240-424	XFQFS	XLR female to 1/4" stereo female	7.99	5.89	5.60
240-426	XFQMS	XLR female to 1/4" stereo Male	7.99	5.89	5.60
240-428	XFRF	XLR female to RCA female	7.99	5.89	5.60
240-430	XFRM	XLR female to RCA Male	7.99	5.89	5.60
240-432	XFQFSL	XLR female to locking 1/4" stereo female	12.99	9.90	9.40
240-434	XMQFM	XLR male to 1/4" mono female	7.99	5.89	5.60
240-436	XMQFS	XLR male to 1/4" stereo female	7.99	5.89	5.60
240-438	XMRF	XLR male to RCA female	7.99	5.89	5.60
240-440	XMQFSL	XLR male to locking 1/4" stereo female	12.99	9.90	9.40

## Dayton Audio Speaker Cable

Dayton Audio cable is designed from the ground up to guarantee the best possible transfer of power from your amplifier to your speakers. It features high strand-count pure copper conductors, and durable PVC insulation and outer jacket. Available by the foot, as well as 30 m (99 ft.) and 100 m (328 ft.) spools.

**Specifications:** • Conductors: 2 x 13 ga. (50 x 30 ga.) • Insulation colors: black and red • Jacket: Black PVC, 8.0 mm (.315") O.D.

#100-482 (Per ft.) ..... \$1.29 LIST **Regularly 98¢** **89¢** /FT

#100-481 (30 m spool) ..... \$69.99 LIST **Regularly \$56<sup>91</sup>** **\$49<sup>90</sup>** EACH

#100-480 (100 m spool) ..... \$219.99 LIST **Regularly \$169<sup>13</sup>** **\$158<sup>00</sup>** EACH

**Specifications:** • Conductors: 4 x 13 ga. (50 x 30 ga.) • Insulation colors: blue, yellow, black, and red • Jacket: Black PVC, 12.0 mm (.472") O.D.

#100-485 (Per ft.) ..... \$1.49 LIST **Regularly \$2<sup>10</sup>** **\$1<sup>90</sup>** /FT

#100-484 (30 m spool) ..... \$141.99 LIST **Regularly \$108<sup>56</sup>** **\$94<sup>90</sup>** EACH

#100-483 (100 m spool) ..... \$455.99 LIST **Regularly \$378<sup>67</sup>** **\$329<sup>00</sup>** EACH

## Dayton Audio Microphone Cable

High quality, commercial grade microphone cable that's perfect for building custom cables! Features two 22 ga. center conductors (as opposed to 24 ga. found in many of the competition's cables) for a lower resistance and maximum signal transfer.

**Specifications:** • Conductors: 2 x 22 ga. (65 x 40 ga.) • Insulation colors: black and white • Shield: 92% coverage bare copper braid • Jacket: midnight blue PVC, 6.4 mm (.252") O.D. • 100% satisfaction guaranteed.

#100-225 (Per ft.) ..... \$69.99 LIST **Regularly \$55<sup>70</sup>** **\$49<sup>90</sup>** EACH

#100-230 (30 m spool) ..... \$339.99 LIST **Regularly \$267<sup>00</sup>** **\$248<sup>00</sup>** EACH

#100-235 (100 m spool) ..... \$639.99 LIST **Regularly \$499<sup>00</sup>** **\$475<sup>00</sup>** EACH

## Neutrik Speakon® Locking Loudspeaker Connectors

**New Low Prices!**

Speakon cable connectors are the industry-standard connectors for amplifier/loudspeaker connections. The entire family of cable connectors has been designed to operate in the high current, inductive load environment of loudspeakers. The cable connectors feature a robust plastic housing, the traditional Neutrik chuck type cable clamp, a unique locking principle, and touch proof contacts. The Speakon receptacles are robust, versatile, easy to terminate, and airtight for audio applications.



Part #	Mfg. #	Description	# Poles	Price (1-24)	Price (25-99)	Price (100-UP)
092-058	NL2FC	Cable connector	2-pole	\$2.29	\$2.29	\$2.18
092-059	NL2MP	Chassis connector, "D" series	2-pole	1.90	1.71	1.54
092-050	NL4FC	Cable connector	4-pole	4.77	4.29	3.86
092-052	NL4MP	Chassis connector, "D" series	4-pole	2.69	2.42	2.18
092-053	NL4MP-ST	Chassis connector, "D" series, w/screw terminals	4-pole	2.69	2.56	2.43
092-054	NL4MPR	Chassis connector, round flange	4-pole	2.69	2.42	2.18
092-065	NA4LJX	Adapter, NL4 Speakon Speakon to 1/4" jack	4-pole	6.05	5.45	4.90
092-068	BSL-WR	Drip boot for NL4FC	-	1.29	1.16	1.04
092-051	NL8FC	Cable connector	8-pole	7.94	7.94	7.54
092-055	NL8MPR	Chassis connector, square flange, nickel face	8-pole	5.84	5.84	5.26
092-069	NL8MPR-BAG	Chassis connector, black chrome face	8-pole	6.35	6.03	5.73
092-057	NL8MM	Coupler for linking (extending) cables	8-pole	14.25	EACH	

## X Series XLR Cable Connectors

This series has become the accepted worldwide standard for XLR cable connectors. The compact design offers one of the shortest XLR cable connector versions in the industry. The female features an insert that's completely surrounded by metal for added protection and the shell has a rubber ring for secure mating to a male XLR or microphone. Assembly is quick and easy with no screws to worry about and includes the unique Neutrik® chuck type strain relief.



Part #	Mfg. #	Type	Shell	Contacts	Price (1-99)	Price (100-UP)
092-011	NC3MX	XLR male	Nickel	Silver	\$1.99	\$1.89
092-013	NC3FX	XLR female	Nickel	Silver	1.99	1.89
092-062	NC3MX-BAG	XLR male	Black	Silver	2.29	2.18
092-060	NC3FX-BAG	XLR female	Black	Silver	2.69	2.42
092-063	NC3MX-B	XLR male	Black	Gold	2.89	2.60
092-061	NC3FX-B	XLR female	Black	Gold	2.89	2.75

## D-L-1 Series XLR Panel Receptacles

In this series, the male and female fit the same size hole cutout and are front or rear mountable. The "D-L-1" Series features a one-piece unit with solder cup terminations. It is RF protected via a 3-point coaxial ground contact shell of the mated connector. This series is very cost effective.



Part #	Mfg. #	Type	Shell	Contacts	Price (1-24)	Price (25-99)	Price (100-UP)
092-034	NC3MD-L-1	XLR male	Nickel	Silver	\$2.25	\$2.25	\$2.03
092-036	NC3FD-L-1	XLR female	Nickel	Silver	2.88	2.59	2.33
092-035	NC3MD-L-B-1	XLR male	Black	Gold	2.66	2.66	2.39
092-037	NC3FD-L-B-1	XLR female	Black	Gold	3.77	3.39	3.05

**New low prices on Neutrik connectors!**  
Visit [parts-express.com](http://parts-express.com) for more details.

**Neutrik**

**Search**

## Dayton Audio Rack Screws 100 Pcs.

#10-32 x 5/8" screw made specifically for attaching shelves and panels to rack systems. The screws feature an easy-start tip that inserts into the threaded screw hole and maintains its place while starting the screw. The black nylon washer is molded to match the taper of the screw head ensuring the washer is centered with respect to the screw. Black oxide finish. 100 pcs. per package. Mfg. #RS1032PK.



**Special**

#262-844 ..... \$13.99 <sup>LIST</sup> **\$10<sup>30</sup>** <sup>Regularly</sup> **\$9<sup>79</sup>** <sup>EACH</sup>

## Dayton Audio Vented Rack Panels



**Special**

- Flanged edges for structural support
- One-piece steel construction
- Heavy-duty 0.065" steel
- Black matte painted finish

Vented rack panels from Dayton Audio are ideal for providing a completed look to your equipment rack without reducing airflow to critical components. Made from 15 gauge perforated steel and painted matte black. Flanged edges reduce flexing. Fits standard 19" racks.

Part #	Mfg. #	Rack Units	Height	List Price	Regular Price	Special Price
262-854	RPV1RU	1	1-3/4"	\$8.99	<b>\$6.32</b>	<b>\$6.00</b>
262-856	RPV2RU	2	3-1/2"	12.99	<b>9.24</b>	<b>8.78</b>

## Dayton Audio Blank Rack Panels



**Special**

- Flanged edges for structural support
- One-piece steel construction
- Heavy-duty 0.065" steel
- Black matte painted finish

Blank rack panels from Dayton Audio are ideal for providing a completed look to your equipment rack—fill in unused spaces or make custom mounting panels and patch panels. Made from 15 gauge steel and painted matte black. Flanged edges reduce flexing. Fits standard 19" racks.

Part #	Mfg. #	Rack Units	Height	List Price	Regular Price	Special Price
262-846	RPB1RU	1	1-3/4"	\$9.99	<b>\$7.40</b>	<b>\$7.00</b>
262-848	RPB2RU	2	3-1/2"	13.99	<b>10.55</b>	<b>10.00</b>
262-850	RPB3RU	3	5-1/4"	17.99	<b>13.60</b>	<b>12.29</b>
262-852	RPB4RU	4	7"	20.99	<b>15.70</b>	<b>14.92</b>

## Dayton Audio 3RU Rack Fan Panel with 2 Fans

- Two pre-mounted fans deliver up to 115 CFM of air flow each
- One-piece 0.065" steel construction
- Black matte painted finish
- Flanged edges for more structural support



**Special**

Keep it cool with the Dayton Audio rack fan panel. Each of the two 4-5/8" fans is rated for a maximum of 115 CFM air flow at 3,100 RPM. The included snap-on air filters are easily cleaned using a mild detergent and warm water. The panel is made from 15 gauge perforated steel and painted matte black. Flanged edges reduce flexing. Fits standard 19" racks.

**Specifications:** • Voltage: 115 VAC, 60 Hz, 240 mA • Fans: 2 • Noise: <49 dBA • Panel dimensions: 3RU; 5-1/4" H x 19" W.

#262-859 ..... \$79.99 <sup>LIST</sup> **\$59<sup>90</sup>** <sup>Regularly</sup> **\$49<sup>00</sup>** <sup>EACH</sup>

Also available as panel only (fans and filters not included):

#262-858 ..... \$16.99 <sup>LIST</sup> **\$12<sup>96</sup>** <sup>Regularly</sup> **\$12<sup>96</sup>** <sup>EACH</sup>

## Allen & Heath ZED-24 Mixing Console

- 16 mono mic/line inputs
- 4 stereo line inputs
- 4 aux sends (2 pre-, 2 post-fade)
- Professional 100 mm faders



**Customer Favorite**

Allen & Heath's ZED-24 is a small format, USB-equipped stereo mixer for live and recording applications. The feature-set is incredibly advanced for a mixer at this level—it has 23 independent sources to the mix, 10 independent outputs, 4 aux sends, a USB send & return (for PC or Mac recording, playback and effects), a unique dual stereo input capability, and some very advanced monitoring facilities.

**ALLEN & HEATH**

#246-2236 ..... \$799.00 <sup>LIST</sup> **\$699<sup>00</sup>** <sup>EACH</sup>

## Behringer GMX210 2x10" Stereo Guitar Combo Amp

- Powerful 2 x 30 watt guitar workstation with authentic V-Tone analog modeling—27 modeled sounds individually selectable per channel
- 2 independent, full-featured modeling channels offering everything you need from clean to crunch to super-fat distortion sounds
- 24-bit stereo multi-effects processor

**New**



The V-Tone GMX210 is the middle-sized offering among the new V-Tone analog modeling stereo amps, featuring 2 x 30 watts and two 10" Jensen/Bugera speakers with two channels, internal effects and tuner.

#248-6228 ..... \$299.00 <sup>LIST</sup> **\$199<sup>99</sup>** <sup>EACH</sup>

## Behringer BXL450 Ultrabass 10" Bass Combo Amp

- Powerful 45 watt bass workstation in wedge-shaped cabinet
- Original BUGERA 10" special high-impact cone speaker
- Clean channel with dedicated Gain control
- Distortion channel with dedicated Gain, Shape and Level controls
- Separate headphone output—perfect for quiet practicing
- CD input allows you to play along to your favorite music

**New**



#248-6140 ..... \$219.99 <sup>LIST</sup> **\$149<sup>99</sup>** <sup>EACH</sup>

## Gator Deluxe Rack Cases

Gator's deluxe rack cases are molded from an incredibly durable high-density military grade Polyethylene. The cases have 18.75" of rackable depth with front and rear threaded rack rails that are field replaceable. Exclusive to the Gator racks are locking front and rear lids. Sloped side handles molded from Polyethylene make them comfortable to carry.



Part #	Mfg. #	Description	List Price	Price Each
262-900	GR-2L	2 Space (2U), 3-1/2"	\$174.99	<b>\$119.99</b>
262-902	GR-4L	4 Space (4U), 7"	202.99	<b>134.99</b>
262-904	GR-6L	6 Space (6U), 10-1/2"	229.99	<b>149.99</b>
262-906	GR-8L	8 Space (8U), 14"	277.99	<b>179.99</b>
262-908	GR-10L	10 Space (10U), 17-1/2"	316.99	<b>199.99</b>
262-910	GR-12L	12 Space (12U), 21"	351.99	<b>219.99</b>
262-912	GA-100	Caster kit for deluxe rack cases	111.99	<b>74.99</b>

Dozens of new items from Gator Cases now available!

**Gator Cases**

**Search**



## QSC K Series Active Loudspeakers

**QSC**

**New**



- Lightweight portable powered speakers with legendary QSC amplifier power and reliability
- 1,000 watt Class D power modules in all models
- Extensive DSP enhances system performance
- Attractive and professional appearance
- Rugged ABS enclosures (K8, K10, and K12)
- Tour-grade 18 gauge steel grilles
- Comfortable ergonomic handles
- 35 mm pole sockets with Tilt-Direct™ (full-range models)
- M10 rigging points for suspended installation (full-range models)
- K10 and K12 perform as main PA or stage monitors

### K8 Active 8" 2-Way Loudspeaker

- Trapezoidal 2-way • LF 8" cone transducer; HF 1.75" diaphragm driver • 61 Hz - 20 kHz (-10 dB) • 127 dB peak SPL • 17.7" H x 11" W x 10.6" D.

#245-600..... \$799.00<sub>LIST</sub> **\$649<sup>98</sup>** EACH

### K10 Active 10" 2-Way Loudspeaker

- Multipurpose 2-way • LF 10" cone transducer; HF 1.75" diaphragm driver • 56 Hz - 20 kHz (-10 dB) • 129 dB peak SPL • 20.4" H x 12.6" W x 11.8" D.

#245-602..... \$899.00<sub>LIST</sub> **\$699<sup>00</sup>** EACH

### K12 Active 12" 2-Way Loudspeaker

- Multipurpose 2-way • LF 12" cone transducer; HF 1.75" diaphragm driver • 48 Hz - 20 kHz (-10 dB) • 131 dB peak SPL • 23.7" H x 14" W x 14" D.

#245-604..... \$999.00<sub>LIST</sub> **\$799<sup>98</sup>** EACH

### KSub Dual 12" Active Subwoofer System

- 4th order bandpass • LF 2 x 12" cone transducers • Birch plywood with black textured painted finish • 44 Hz - 148 Hz (-10 dB) • 130 dB peak SPL • 26" H x 14" W x 28.1" D.

#245-606 ..... \$1,199.00<sub>LIST</sub> **\$1,049<sup>98</sup>** EACH

K Series active loudspeakers are eligible for QSC's Free 6 Year Extended Warranty (a \$99 value). You must register your products on QSC's website to qualify.

## QSC K Series Totes & Sub Cover

Soft, padded totes have side-flap access to aluminum top handle for vertical carry. Soft, padded cover for KSub features a grill guard and includes strap facilitates to secure transport of K Series 2-way speakers for one-trip load-in. All are constructed of weather resistant, heavy-duty Nylon/Cordura® material.



**New**

Part #	Description	Price Each
245-610	Tote for K8	\$64.98
245-612	Tote for K10	69.98
245-614	Tote for K12	79.98
245-616	Cover for KSub	89.98

## Behringer EPA150 EUROPORT Briefcase-Style Portable PA System



- Ultra-compact 2 x 75-Watt, 5-channel portable PA system in a briefcase format
- System sets up in seconds—perfect for entertainment, multimedia presentations, etc.
- Enormous power, incredible sonic performance, and super-light weight
- Studio-grade 24-bit stereo FX processor with 100 presets
- Revolutionary FBQ Feedback Detection system reveals critical frequencies for easy feedback removal
- 2 "Invisible" mic preamps with phantom power
- Stereo 7-band graphic EQ
- Comes with one Behringer XM1800S microphone, mic clip, and cable
- "Planet Earth" switching power supply for maximum flexibility (100- 240 V)



**New**



#248-6200 ..... \$439.99<sub>LIST</sub> **\$299<sup>99</sup>** EACH

## Behringer Eurolive XL Series 2-Way PA Speaker Systems

**New**

- Ultra-compact & light weight systems deliver excellent sound
- Extremely powerful long-excursion woofer
- State-of-the-art 1.75" titanium-diaphragm compression driver
- Ultra-wide dispersion, large-format horn
- Versatile trapezoidal enclosure design allows different positioning
- 2 professional speaker connectors plus 1/4" jack connectors



#248-6476 (B212XL-12" 2-Way) ..... \$219.99<sub>LIST</sub> **\$149<sup>99</sup>** EACH

#248-6478 (B215XL-15" 2-Way) ..... \$299.99<sub>LIST</sub> **\$199<sup>99</sup>** EACH

## Peavey IPR™ 1600 Power Amplifier

*A revolution in amplifier technology*

**New**



- Incredibly lightweight and efficient
- DDT™ protection circuitry
- Class D topology and switch-mode power supply
- Two channels with independent crossovers
- Detented input controls, combi XLR / 1/4" inputs, Speakon® output connectors



The IPR 1600 boasts 830 watts per channel at 2 ohms and weighs in at a mere 7 lbs. Features 2-channel independent fourth order Linkwitz-Riley crossovers, a variable-speed fan housed in a lightweight aluminum chassis, patented DDT speaker protection, and the revolutionary new IPR class D topology.

#248-7980 ..... \$499.99<sub>LIST</sub> **\$299<sup>98</sup>** EACH

Visit [parts-express.com](http://parts-express.com) for more information on the entire new line of IPR and IPR DSP lightweight amplifiers.

Peavey IPR

Search

## Dynamic Microphone with Cable



**\$9.50** EACH  
#249-120

Don't miss this super deal on a metal body, dynamic vocal microphone!

Compare to \$20

## Lanzar In-Dash 7" Motorized TFT-LCD Touch Screen DVD / CD Receiver

**Specifications:** • Fully motorized 7" TFT LCD wide aspect touch screen • Audio CD, DVD, VCD, SVCD, DIVX (MPEG4), JPEG, MP3 compatible • AM/ FM-MPX radio (USA) • 24 station memory • Front panel A/V input • Rear RCA A/V input • A/V output • RCA video/coaxial output • Multi audio/ subtitle/angles • Full-function remote control • Rear RCA line out (L/R) • Front RCA line out (L/R) • Subwoofer output • Last position memory • Max 320 watt power output (80 watts x 4 ch.) • Auto illumination • Anti-shock/anti-skip mechanism • USB interface • Detachable front control panel • Direct connection of alternate audio sources through front panel AUX input jack • Dimensions: 7.24" W x 2.13" H x 6.69" D (single DIN) • Mfg. #SDBT77DN.

#205-576 .....\$686.00<sub>LIST</sub> **Special** Regularly **\$249<sup>00</sup>** EACH

## Pyle PLCD16MRWB Marine Weather Band AM/FM CD Receiver

*With Wired Remote Control*

• Weather Band radio • Anti-theft detachable face • CD-R/RW compatible • RCA line out • RCA aux input • Full-function wired remote control • Full-function LCD display • 30 station memory • Auto best station memory • Mute control • Clock function • Full illumination faceplate with dim function • Anti-skip CD mechanism • Power output: 50 watts x 4 max.

#267-792.....\$281.61<sub>LIST</sub> **Special** Regularly **\$138<sup>79</sup>** EACH

## Pyle 7" Widescreen TFT-LCD 16:9 Monitor

*With Headrest Shroud & Universal Stand*

• 7" TFT-LCD active matrix high-resolution display monitor • 16:9 widescreen • Slim-size wireless remote control • Two audio/video inputs, front panel controls, and wide, off-axis visibility • On-Screen Display • Includes headrest shroud and universal stand-style bracket

High resolution 7" TFT-LCD monitor from Pyle features a 16:9 wide-angle display, two audio/video inputs including one front-mounted jack, front headphone output, and front panel controls. Includes a headrest shroud and universal stand-style bracket.

**Specifications:** • Aspect ratio: 16:9 • Video format: NTSC/PAL • Back light: High brightness CCFT • Power requirements: 12~14.4 VDC, < 9W • Mfg. #PLHR76.

#205-508 .....\$205.00<sub>LIST</sub> **Special** Regularly **\$99<sup>64</sup>** EACH

## Unibit® Step-Drill Bit

Drills holes ranging in size from 1/4" to 3/4", in nine 1/16" increments. For use on metal, plastic and wood up to 1/8" thick. Diameter markings are permanently laser etched on the flute for easy hole-size determination. Single cutting edge design helps to eliminate chatter and vibration. Made of durable high speed steel. 3/8" shaft.

#362-105.....\$38<sup>45</sup> **Special** Regularly **\$35<sup>25</sup>** EACH

## Door Upholstery Remover

Special tool used to remove plastic clips that secure door upholstery on late model automobiles. Easy to use. Large, comfortable handle.

#362-080 .....\$9<sup>46</sup> **Special** Regularly **\$79<sup>5</sup>** EACH

## Fender Cover

Large foam backed vinyl fender cover protects automobile finish when working under the hood. Dimensions: 23" x 34-1/2".

#362-030 .....\$24<sup>00</sup> **Special** Regularly **\$19<sup>95</sup>** EACH

*No matter where your vehicle has rattles & buzzes, Cascade Audio has the solution!*

## V-MAX MP Aluminum Layer Damping Sheets

• Lightweight • Effective • Easy to cut and install

These durable damping pads are constructed of an advanced, non-curing butylene rubber bonded to a thin layer of black anodized aluminum. Applying V-MAX to steel, plastic and fiberglass surfaces will decrease structural resonance, producing a tighter, quieter and more comfortable passenger compartment. Ideal for use on inner door surface, floor, roof, quarter panels, rear deck, trunk floor and trunk lid. Each package contains four 10" x 10" sheets, enough to cover 2.8 sq. ft.

#268-287 .....\$37.95<sub>LIST</sub> **Special** Regularly **\$32<sup>50</sup>** EACH

## VB-2 & VB-2HD Damping Sheets

VB-2 is a flexible, odorless and light-weight mineral filled vinyl-copolymer damping sheet. It has twice the damping and less than half the weight of asphalt damping materials and the ability to handle continuous temperatures to 250°F. For heavy duty damping requirements, VB-2HD is the perfect material. Both models feature a modified acrylic peel and stick adhesive that does not require the use of a heat gun for installation and are ideal for damping sheet-metal, plastic, fiberglass and wood. VB-2 thickness: .040". VB-2HD thickness: .075".

Part #	Mfg. #	Coverage	Sheet Dimensions	Wt. (lbs.)	Regular Price	Special Price
268-262	VB-2	13.9 sq. ft.	37" x 54" (x1)	4.0	\$65.00	<b>\$59.80</b>
268-264	VB-2SP	41.7 sq. ft.	37" x 54" (x3)	12.0	170.65	<b>159.00</b>
268-266	VB-2HD	13.9 sq. ft.	37" x 54" (x1)	6.4	79.95	<b>73.95</b>
268-268	VB-2HDSP	41.7 sq. ft.	37" x 54" (x3)	19.2	228.00	<b>198.00</b>

## Belkin Universal USB Charging Kit

• Safely charges 5 VDC USB and Mini USB devices such as MP3 players, cell phones, video game controllers, PC accessories, and digital cameras • Includes 12 VDC cigarette lighter to USB power adapter, 100 ~ 240 VAC to USB power adapter, and 36" USB A male to mini USB B male connection cable

**BUYOUT**

**\$5<sup>00</sup>** EACH  
#139-006

Compare to \$35

## Car Charger for iPhone 3G, iPod Touch, 4th Gen. iPods

Note: Designed to work only with 3G iPhone, 2nd generation iPod Touch, and 4th generation iPods.

#181-180 .....\$9.99<sub>LIST</sub> **Special** **\$4<sup>76</sup>** EACH



## Cobra Power Inverters

- Compact size
- Low-voltage/over-voltage shutdown with alarm
- Reverse polarity and thermal shutdown protection
- CPI 475 includes storage case, cigarette lighter plug, and direct-to-battery cables
- CPI 875 includes storage case and direct-to-battery cables
- CPI 1000 includes direct-to-battery cables
- CPI 1000, CPI 1575, and CPI 2575 feature an LED Function/Status Volt/Watt meter and remote on-off capability (requires CPI A20, sold separately)

Use everything from office equipment to household appliances in your car, truck, RV, or boat. Just connect to any 12 VDC source and convert vehicle battery power to clean, safe and efficient 120 volt AC power. Cobra's new inverter series also incorporates a USB output, ideal for charging and operation of most small video games and modern office devices such as iPods®, Blackberrys®, and mobile phones. Two-year manufacturer's warranty.

**Cobra ELECTRONICS**



*AC power that goes where you go!*



Part #	Mfg. #	Output Power Continuous	AC Surge	Outlets	List Price	Price Each
125-320	CPI 475	400 W	800 W	2	\$39.95	<b>\$29.95</b>
125-322	CPI 875	800 W	1,600 W	2	79.95	<b>69.95</b>
125-324	CPI 1000	1,000 W	2,000 W	2	129.95	<b>119.95</b>
125-326	CPI 1575	1,500 W	3,000 W	3	189.95	<b>149.95</b>
125-328	CPI 2575	2,500 W	5,000 W	3	299.95	<b>289.95</b>
125-319	CPI A20 Remote control for CPI 1000, CPI 1575, and CPI 2575				24.95	<b>19.60</b>
125-329	CPI A4000BC Cable kit for CPI 1575 and CPI 2575				49.95	<b>38.75</b>

Note: To determine required wattage for a device (if the actual wattage rating is not given), look up the Amps a device is rated for. The amperage is found on the device's ID tag, usually on the rear of the unit. Multiply the Amps of the device by 120 to determine required wattage (Amps x Volts = Watts). Choose an inverter with an equal or greater wattage rating.

## Automotive Carpet

Premium unbacked automotive carpet. This non-woven plush carpet is made of 100% solution dyed polyolefin fiber. It resists stains, soil, mildew and sun fading. This carpet is ideal for use in car stereo installations. Use it to cover your custom speaker boxes and amp boards. Now your entire installation can be color coordinated to your car interior. 40" wide and sold by the linear yard. Made in the USA.



**Special**

Part #	Color	Part #	Color
261-700	Black	261-730	Dark Tan
261-710	Navy Blue	261-740	Gray
261-725	Burgundy	261-750	Charcoal

Regularly **\$5<sup>85</sup>**  
**\$5<sup>29</sup>**/YARD

Per Linear Yard (36" x 40") ..... **\$5<sup>85</sup>**

## 3M Hi-Strength 90 Spray Adhesive

**SAVE 20%**

Hi-Strength 90 provides high contact bond strength and is ideal for bonding decorative laminate to tables and shelves, adhering polyethylene and polypropylene to wood and metal, or attaching plastic sign lettering to wood. One minute drying time. 17.6 oz. net wt., contains 24 fl. oz.

**Special**

Regularly **\$19<sup>87</sup>**  
**\$15<sup>89</sup>** EACH

## Road Gear 150 Watt Amplifier Kit

- Everything you need to run power to one amplifier
- Recommended for up to 150 watts max
- Also great for running power to many other high-current 12V accessories

**ROAD GEAR**

**BUYOUT**

**\$2<sup>50</sup>** EACH  
**#289-904**

Compare to \$10



## Belkin TuneDok Car Holder for iPod®

- Designed for iPod® 3G, 4G, 5G and Classic
- Holds the iPod® securely in a flexible, non-scratch cradle with suction cup
- iPod® not included

**BUYOUT**

**\$2<sup>49</sup>** EACH  
**#139-002**

Compare to \$30



## Monster Cable Interlink 101 XLN 10 ft.

**Car Audio Interconnect**

**MONSTER®**

- 100% foil shielding for maximum rejection of EM and RF noise and interference
- Low density dielectric for faster, accurate signal transfer
- 24k gold Stubby™ connectors
- Duraflex® protective jacket

**BUYOUT**



**\$5<sup>00</sup>** EACH  
**#269-055**

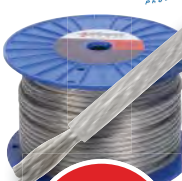
The Interlink® 101 XLN® is specially designed to transfer complex music signals, while minimizing cable distortions. DoubleHelix™ conductors with XLN® Xtra Low Noise® construction deliver music the way music was meant to be heard. 3 m (10 ft.) length. Hurry, quantities are limited!

Compare to \$20

## Phoenix Gold 8 AWG Power Cable



Phoenix Gold ZEROpoint series power cable is ultra flexible (735 strands) and features a silver translucent jacket that is gas, oil, and high temperature resistant. Great for high power car audio applications. Sold by the foot; please order a minimum of 5 ft.



**59¢** /FT  
**#269-142**

Compare to \$1

**BUYOUT**

Also available on a 250 ft. spool!

Less than **28¢ per foot!**

**\$6<sup>900</sup>** EACH  
**#269-140**

Compare to \$200

## Take it with You!

- Converts 12 Volts DC to 1.5, 3, 4.5, 5, 6, 9, or 12 VDC
- Includes the most commonly used plug tips for portable electronics
- Voltage regulation protects equipment from being damaged
- Eliminates the need for expensive batteries
- Save 75% off the MSRP through this factory buyout

**\$4<sup>00</sup>** EACH  
**#269-060**

Compare to \$20



**BUYOUT**

Power your CD player, MP3 player, or other portable device using your vehicle's cigarette lighter or power accessory jack with this Jensen high-current 1,000 mA DC adapter. Mfg. #JCD22A.



Parts Express  
725 Pleasant Valley Dr.  
Springboro, OH 45066-1158  
Phone: 937-743-3000  
Fax: 937-743-1677  
parts-express.com

© 2010 Parts Express

PRSR STD  
U.S. POSTAGE  
**PAID**  
PARTS  
EXPRESS

CURRENT RESIDENT OR

CUSTOMER ID

KEY CODE

parts-express.com

1-800-338-0531

## New Low Prices on Neutrik Connectors!



**NEUTRIK**

Page 27

Neutrik NL4FC Speakon  
4 Pole Cable Mount Connector

**NEW**

See Page 14

## New Components for Classic Designs!

Realistic Mach One  
Replacement Woofers

Peavey IPR™ Series  
Lightweight Amplifiers



Page 29

**NEW**

Only \$299<sup>98</sup>

Popular Phenolic  
Ring Tweeters



**TR** SPEAKERS

**\$9<sup>00</sup>**

Regularly \$11.60

## Rescue Tape 25% Off!

Fix it fast with Rescue Tape  
High Temperature, High Pressure,  
Zero Residue Repair Tape!

Page 13

**\$7<sup>50</sup>**

Regularly \$9.95



**RESCUE TAPE**

**NEW**

Only \$299<sup>99</sup>



Behringer EPA150  
EUROPORT Briefcase-  
Style Portable PA System



Page 29