

NEW PRODUCTS



THE BEST VALUE IN TRUCK PARTS

LG50K-H LANDING GEAR



INDUSTRIES, INC.

TOLL FREE: 800-323-0647 • FAX: 574-522-5487
4531 CHESTER DRIVE • ELKHART, IN 46516
www.sircoind.com • sales@sircoind.com



Product Features

- High quality and durability
- 50,000 lb. capacity
- Precision forged 2 speed gearbox
- UNIVERSAL mount
- Crank handle and connecting shaft included
- Meets or exceeds TTMA and AAR certification and recommendations
- Jack screw and bevel gear ratio interchangeable with other like models

Upgraded Design Features

- Standard 2" diameter axle
- Floating nut grease cavity reservoir
- Increased inner tube wall thickness

Includes:

- **LG50K-HD** – Landing Gear Handle
- **LG50K-HG** – 50K Gear Leg
- **LG50K-HNG** – 50K Non-Gear Leg
- **LG50K-SS** – Sand Shoe
- **LG-CS** – Connection Shaft
- **LG-WB** – “W” Mounting Bracket

**REPLACEMENT PARTS ARE FOR SIRCO LANDING GEAR ONLY
PLEASE CONTACT US FOR MORE INFORMATION**

THE BEST VALUE IN TRUCK PARTS

50K LANDING GEAR



LG50K-J

(INTERNAL GEARBOX)

INDUSTRIES, INC.

TOLL FREE: 800-323-0647 • FAX: 574-522-5487
 4531 CHESTER DRIVE • ELKHART, IN 46516
www.sircoind.com • sales@sircoind.com



Product Features

- High quality and durability
- 50,000 lb. capacity
- Precision forged 2 speed gearbox
- Available in STANDARD mount orientation
- Crank handle and connecting shaft included

S

Upgraded Design Features

- Standard 2" diameter axle
- Floating nut grease cavity reservoir
- Increased inner tube wall thickness

LG50K-J Specification Sheet

Dimensions		Permanent Lubrication	
Outer Tube	5.31" X 5.31" Square Tubing	Jackscrew	High Viscosity and Lubricity Grease
Inner Tube	4.8" X 4.8" Square Steel Tubing	Gears	High Viscosity and Lubricity Grease
Gearbox		Mounting	
Internal 2-Speed		Standard	10-Bolt (Standard TTMA Pattern)
Sand Shoe		Finish	
9.84" X 11.57" Steel		Standard	Flat Black
Crank Ratio		Weight	
Low Gear High	36 Cranks per inch	Per Pair	209 lbs.
Gear	4 Cranks per inch	Additional Crank Handle and Connection Shaft Included	
Operational			
Lengths	53 inches		
Extended	34 inches		
Retracted Lift	19 inches		
Load Capacity			
Static Load Lift	160,000 lbs.		
Capacity	50,000 lbs.		

THE BEST VALUE IN TRUCK PARTS

66K LANDING GEAR



LG66K-H

INDUSTRIES, INC

4531 CHESTER DR. ELKHART, IN 46516
 TOLL FREE: 800-323-0647 FAX: 572-522-5487
 www.sircoind.com sales@sircoind.com



- High quality and durability
- 66,000 lb. capacity
- Precision forged 2 speed gearbox
- Universal mount
- Crank handle and connecting shaft included
- Meets or exceeds TTMA and AAR certification and recommendations
- Mounting plates interchangeable with other like models

LG66K-H Specification Sheet

Material		Permanent Lubrication	
Outer Tube	<i>5 5/16" X 5 5/16" Square Tubing</i>	Jackscrew	<i>High Viscosity and Lubricity Grease</i>
Inner Tube	<i>5" X 5" Square Steel Tubing</i>	Gears	<i>High Viscosity and Lubricity Grease</i>
Gearbox <i>2-Speed</i>		Mounting	
Sand Shoe <i>12" X 10" Steel</i> <i>Circular Foot Plate Option Available</i>		Standard & Universal	<i>10-Bolt (Standard TTMA Pattern)</i>
Crank Ratio		Finish	
Low Gear	<i>47 Cranks per Inch</i>	Standard & Universal	<i>Flat Black</i>
High Gear	<i>3.9 Cranks per Inch</i>	Weight	
Operational Lengths		Per Pair	<i>238 lbs.</i>
Extended	<i>55 inches</i>	Additional <i>Crank Handle and Connection Shaft Included</i>	
Retracted	<i>36 inches</i>		
Lift	<i>19 inches</i>		
Load Capacity			
Static Load	<i>200,000 lbs.</i>		
Lift Capacity	<i>66,000 lbs.</i>		

THE BEST VALUE IN TRUCK PARTS



SIRCO INDUSTRIES, INC.
4531 CHESTER DR. ELKHART, IN 46516

Toll Free: 800.323.0647
Fax: 574.522.5487
E-Mail: sales@sircoind.com
Web: www.sircoind.com

NEW HUTCH STYLE EQUALIZER WITH POLYURETHANE BUSHING

SH1021U



REPLACES

ATRO
EUCLID

EQ53-35250 (w/o bolt kit)
E-7918

SH1048U



REPLACES

ATRO
EUCLID

EQ53-3158 (w/o bolt kit)
E-9567

THE BEST VALUE IN TRUCK PARTS

Manufacturers' and replacement parts suppliers' names and numbers are used for reference purposes only, and it is not implied any part listed is a product of these manufacturers or suppliers



SIRCO INDUSTRIES, INC.
 4531 CHESTER DR. ELKHART, IN 46516

Toll Free: 800.323.0647
 Fax: 574.522.5487
 E-Mail: sales@sircoind.com
 Web: www.sircoind.com

12202013

**** NEW SIRCO WHEEL SEALS ****



SIRCO NUMBER	STYLE	PKG QTY	CR	CR PLUS	NATIONAL	STEMCO
SS307-0743	STEMCO	1	46305	46300	370025A	372-7097
SS372-7097	STEMCO	1	46305	46300	370025A	372-7097
SS373-0143	STEMCO	1	46305	46300	370025A	372-7097
SS382-8036	STEMCO	1	35066	35058	370001A	382-8036
SS392-9131	STEMCO	1	47697	47692/47691	370003A	392-9131
SS35066	CR	1	35066	35058	370001A	382-8036
SS38780	CR	1	38780		370023A	
SS42623	CR	1	42623	42627	70065A/376590	372-7099
SS46300	CR PLUS	1	46305	46300	370025A	373-0143
SS46305	CR	1	46305	46300	370025A	372-7097
SS47692	CR PLUS	1	47697	47692	370003A	392-9131
SS47697	CR	1	47697	47692	370003A	392-9131
SS370001	NATIONAL	1	35066	35058	370001A	382-8036
SS370003	NATIONAL	1	47697	47692/47691	370003A	392-9131
SS370025	NATIONAL	1	46305	46300	370025A	372-7097
SS370065	NATIONAL	1	42623	42627	70065A/376590	372-7099
SS755400	EASY SEAL	1	46305	46300	370025A	372-7097
SS761400	EASY SEAL	1	47697	47692/47691	370003A	392-9131

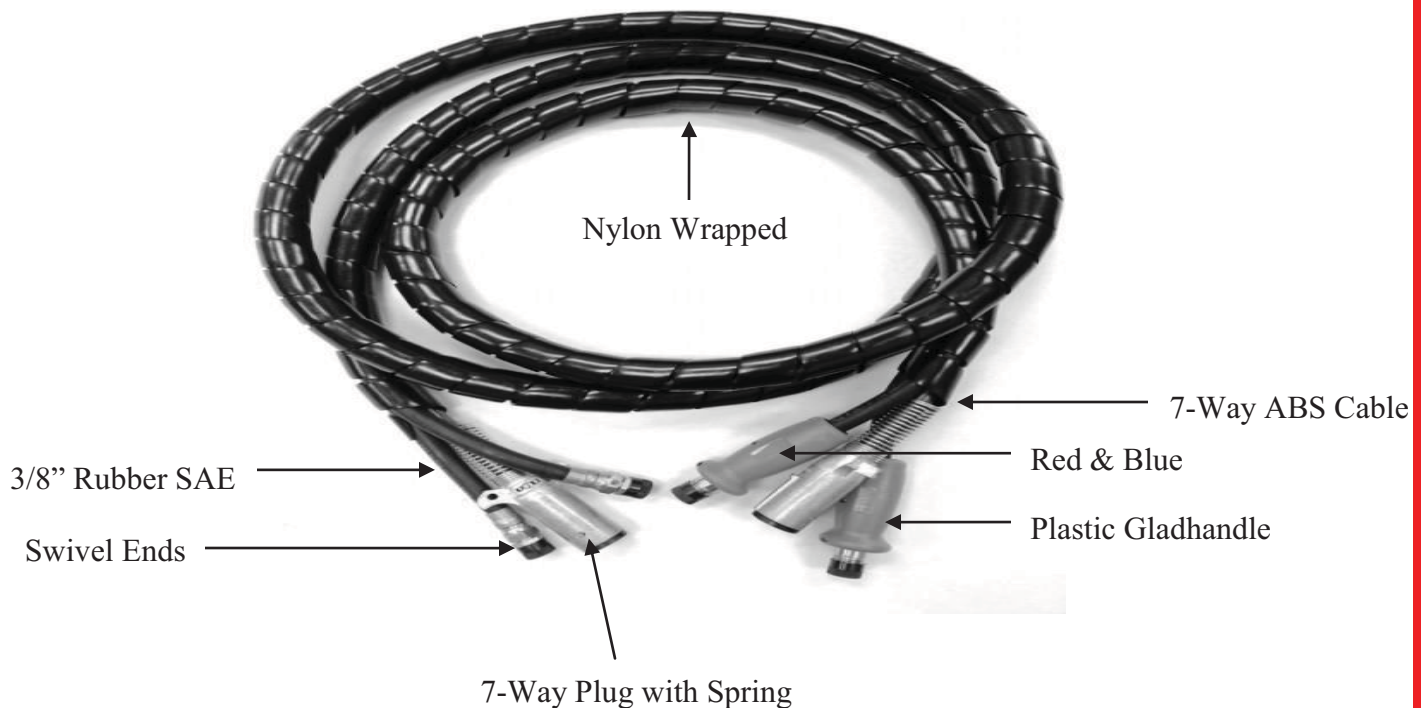
THE BEST VALUE IN TRUCK PARTS



INDUSTRIES, INC.
4531 CHESTER DR. ELKHART, IN 46516

Toll Free: 800.323.0647
Fax: 574.522.5487
E-Mail: sales@sircoind.com
Web: www.sircoind.com

3 TO 1 AIR POWER LINE



ORDER TODAY!

A3001 (15 ft.)

A3002 (20 ft.)

THE BEST VALUE IN TRUCK PARTS



INDUSTRIES, INC.
4531 CHESTER DR. ELKHART, IN 46516

Toll Free: 800.323.0647
Fax: 574.522.5487
E-Mail: sales@sircoind.com
Web: www.sircoind.com

PLACARDS

NOW AVAILABLE

MADE IN THE USA



SIRCO	DESCRIPTION
SP1000	8 LEGEND FLIP PLACARD - ALUMINUM
SP1001	8 LEGEND FLIP PLACARD - WHITE



SIRCO	DESCRIPTION
SP2000	SLIDE IN PLACARD FRAME - BRITE MILL
SP2001	SLIDE IN PLACARD FRAME - WHITE

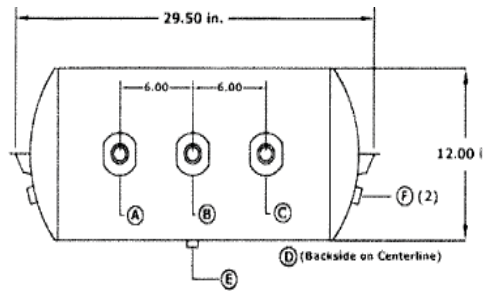
- 8-Legend Placards fully comply with DOT specifications for transporting hazardous materials
- Back plate constructed of corrosion resistant, formed aluminum with corners designed to direct away ice and road debris
- All panels built from aluminum alloy with rounded corners for safety
- Vibrant UV ink complies with DOT color standards and will not fade or chip

THE BEST VALUE IN TRUCK PARTS



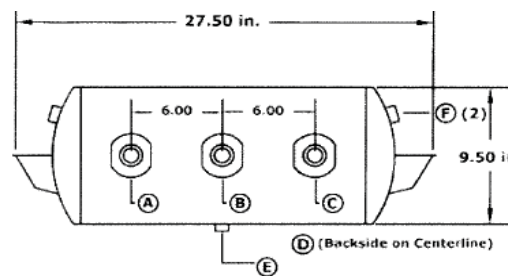
Sirco Industries, Inc.
 4531 Chester Dr.
 Elkhart, IN 46516
 Phone: (800) 323-0647
 Fax: (574) 522-5487
 sales@sircoind.com

AIR TANKS



12" Diameter

SIRCO	SLOAN	TECTRAN	VELVAC	NEW LIFE	AURORA
AT1200	461010	2002	035108		HOS1200
AT1205	461009	2002A	035107	1010329	
AT1217				1010335	HOS1217
AT1219				1010332	
AT1242	461039				HOS1242
AT1068	461011	2000FB	RUBBER MOUNTING PAD		



9.5" Diameter

SIRCO	SLOAN	TECTRAN	VELVAC	NEW LIFE	AURORA
AT9500	461005	2001	035104	1010344	HOS9500
AT9501	461004	2001H			
AT9508	461003	2001A	035106	N9508-AA	HOS9508
AT9534	461012			1010336	HOS9534
AT9553					
AT9575				1010330	

The Best Value in Truck Parts

Manufacturers' and replacement parts suppliers' names and numbers are used for reference purposes only, and it is not implied any part listed is a product of these manufacturers or suppliers.

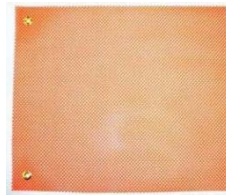


INDUSTRIES, INC.
4531 CHESTER DR. ELKHART, IN 46516

Toll Free: 800.323.0647
Fax: 574.522.5487
E-Mail: sales@sircoind.com
Web: www.sircoind.com

BANNERS AND FLAGS

MADE IN THE USA



PART DESCRIPTION	PART NUMBER
18" x 84" Mesh Oversize Load Banner w/Grommets & Rope	WB1000
18" x 84" Vinyl Oversize Banner/Wide Load w/Grommets & Rope	WB1001
18" x 84" Mesh Oversize Load Banner w/Bungee	WB1002
18" x 18" Red Mesh Safety Flag w/36" Dowel	WF1000DR
18" x 18" Orange Mesh Safety Flag w/36" Dowel	WF1001DO
18" x 18" Red Mesh Safety Flag w/Grommets	WF1002GR
18" x 18" Orange Mesh Safety Flag w/Grommets	WF1003GO
18" x 18" Red Poly Safety Flag w/Wire Loop	WF1004WR
Magnet Flag Holder (90#)	WF1005MG
18" x 18" Orange Poly Safety Flag w/Wire Loop	WF1006WO
18" x 18" Red Mesh Safety Flag w/Bungee	WF1007BR
18" x 18" Orange Mesh Safety Flag w/Bungee	WF1008BO
3' x 5' Poly American Flag w/Grommets	USFLAG

THE BEST VALUE IN TRUCK PARTS



STEEL UNDERBODY TOOLBOX

MADE IN THE USA



SIRCO	BUYERS	HEIGHT	DEPTH	WIDTH	LATCHES	WEIGHT
TB1824	1702300	18"	18"	24"	1	67 lbs.
TB1830	1702303	18"	18"	30"	1	80 lbs.
TB1836	1702305	18"	18"	36"	1	92 lbs.
TB1848	1702310	18"	18"	48"	2	118 lbs.
TB1860	1702315	18"	18"	60"	2	143 lbs.

- 14-gauge steel box
- 12-gauge steel door
- Recessed door and beveled door edges protect from moisture & road dirt
- ½" thick gasket system
- Stainless steel, continuous hidden hinge
- Reinforced door backbone protects latch mechanism
- Stainless steel locking T-handle latch
- "Aircraft cable" door retainers
- Replaceable doors
- Powder coated for corrosion resistance
- Individually boxed for shipping

ORDER TODAY SIRCO INDUSTRIES (800) 323-0647 sales@sircoind.com

THE BEST VALUE IN TRUCK PARTS

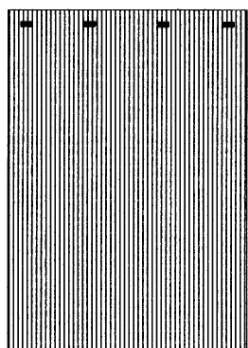


INDUSTRIES, INC.

4531 CHESTER DRIVE • ELKHART, IN 46516 • (574) 294-5487

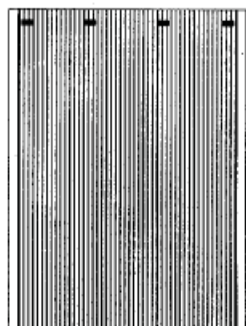
Toll Free: (800) 323-0647
Fax: (574) 522-5487
E-Mail: info@sircoind.com
Website: www.sircoind.com

COMPOSITE RUBBER MUD FLAPS

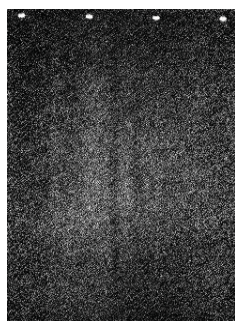


DEEP GROOVE "COMPOSITE RUBBER" ANTI-SPRAY 1/2" THICK	
SIRCO	DESCRIPTION
MF2424R12	24 x 24 COMPOSITE RUBBER
MF2430R12	24 x 30 COMPOSITE RUBBER
MF2436R12	24 x 36 COMPOSITE RUBBER
MF2440R12	24 x 40 COMPOSITE RUBBER
MF2442R12	24 x 42 COMPOSITE RUBBER
MF2444R12	24 x 44 COMPOSITE RUBBER

NEW
NEW
NEW



RIBBED "COMPOSITE RUBBER" ANTI-SPRAY 3/8" THICK	
SIRCO	DESCRIPTION
MF2424R38	24 x 24 COMPOSITE RUBBER
MF2430R38	24 x 30 COMPOSITE RUBBER
MF2436R38	24 x 36 COMPOSITE RUBBER



TEXTURED "COMPOSITE RUBBER" 3/16" THICK	
SIRCO	DESCRIPTION
MF2424R316	24 x 24 COMPOSITE RUBBER
MF2430R316	24 X 30 COMPOSITE RUBBER
MF2436R316	24 X 36 COMPOSITE RUBBER

NEW
NEW
NEW

THE BEST VALUE IN TRUCK PARTS



INDUSTRIES, INC.

4531 CHESTER DRIVE • ELKHART, IN 46516 • (574) 294-5487

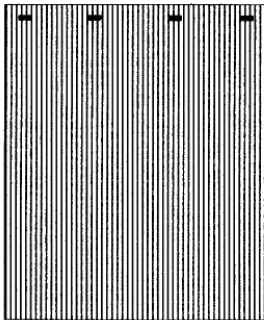
Toll Free: (800) 323-
 Fax: (574) 522-
 E-Mail: info@sircoind.
 Website: www.sircoind.

Mud Flaps

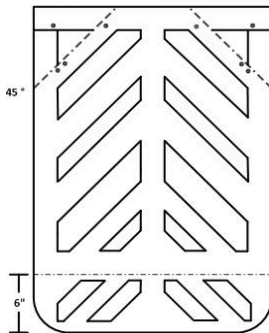


POLY HEAVY DUTY BLACK .320 THICKNESS	
SIRCO	DESCRIPTION
MF2424PHDB	24 x 24 Poly Heavy Duty Black
MF2430PHDB	24 x 30 Poly Heavy Duty Black
MF2436PHDB	24 x 36 Poly Heavy Duty Black

POLY MUD FLAPS .170 THICKNESS	
SIRCO	DESCRIPTION
MF2424PSB	24 x 24 Poly Black
MF2424PSW	24 x 24 Poly White
MF2430PSB	24 x 30 Poly Black
MF2430PSW	24 x 30 Poly White
MF2436PSB	24 x 36 Poly Black
MF2436PSW	24 x 36 Poly White



ANTI-SPRAY POLY MUD FLAPS .25 THICKNESS	
SIRCO	DESCRIPTION
MF2424PASB	24 x 24 Poly Anti-Spray Black
MF2424PASW	24 x 24 Poly Anti-Spray White
MF2430PASB	24 x 30 Poly Anti-Spray Black
MF2430PASW	24 x 30 Poly Anti-Spray White
MF2436PASB	24 x 36 Poly Anti-Spray Black
MF2436PASW	24 x 36 Poly Anti-Spray White



CHEVRON "RUBBER" MUD FLAPS .215 THICKNESS	
SIRCO	DESCRIPTION
MF2424RC	24 x 24 Chevron Black
MF2430RC	24 x 30 Chevron Black
MF2436RC	24 x 36 Chevron Black

THE BEST VALUE IN TRUCK PARTS



INDUSTRIES, INC.
4531 CHESTER DR. ELKHART, IN 46516

Toll Free: 800.323.0647
Fax: 574.522.5487
E-Mail: sales@sircoind.com
Web: www.sircoind.com

CAUTION WIDE TURNS MUD FLAP



SIRCO	DESCRIPTION
MF2430PCWT	24" X 30" X .150" YELLOW POLY MUD FLAP

THE BEST VALUE IN TRUCK PARTS

SIRCO INDUSTRIES, INC.



Conspicuity Tape



4531 CHESTER DRIVE
ELKHART, IN 46516
800-323-0647
FAX: 574-522-5487
www.sircoind.com
sales@sircoind.com

SIRCO	DESCRIPTION
CT6R6W2150	2" X 150' (6" RED, 6" SILVER)
CT11R7W2150	2" X 150' (11" RED, 7" SILVER)
CTR2150	2" X 150' SOLID RED
CTW2150	2" X 150' SOLID SILVER

- **Meets all Federal and State Certifications**
- **Micro prismatic Technology**
- **Thin and Flexible**
- **Comprehensive Warranty**
- **10 Year Durability**



INDUSTRIES, INC.

4531 CHESTER DRIVE • ELKHART, IN 46516 • (574) 294-5487

Toll Free: (800) 323-0647
Fax: (574) 522-5487
E-Mail: info@sircoind.com
Website: www.sircoind.com

3/1/2011

TRIANGLE WARNING KIT



SI1005

MEETS ALL DOT STANDARDS

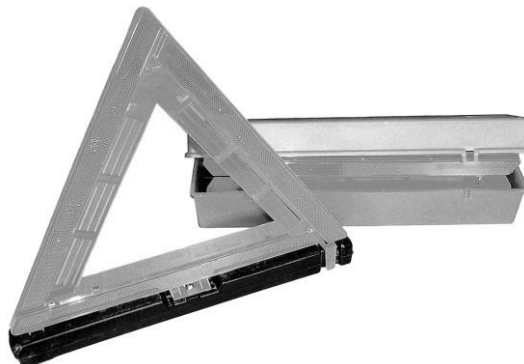
MOLDED PLASTIC CASE

AIRFLOW DESIGN REDUCES WIND RESISTANCE

EASY TO SET UP

PRINTED PLACEMENT INSTRUCTIONS

REQUIRES NO TOOLS



Manufacturers' and replacement parts suppliers' names and numbers are used for reference purposes only, and, it is not implied any part listed is a product of these manufacturers or suppliers

THE BEST VALUE IN TRUCK PARTS

TARP STRAPS



- 100% EPDM
- ASTM D412 for tensile strength and elongation
- ASTM D2240 standard for durometer
- ASTM D2137 for low temperature

Standard Package
quantity for Tarp Straps
is 50 pieces

Standard Package
quantity for Tarp Strap
Hook is 10 pieces per
bag

PART NUMBER	DESCRIPTION
TS-10	10" Tarp Strap
TS-15	15" Tarp Strap
TS-21	21" Tarp Strap
TS-31	31" Tarp Strap
TS-41	41" Tarp Strap
TSHOOK	Tarp Strap Hook

WHEEL CHOCK WC1000



SIRCO INDUSTRIES, INC. (800) 323-0647 sales@sircoind.com

THE BEST VALUE IN TRUCK PARTS



INDUSTRIES, INC.
4531 CHESTER DR. ELKHART, IN 46516

Toll Free: 800.323.0647
Fax: 574.522.5487
E-Mail: sales@sircoind.com
Web: www.sircoind.com

ELECTRIC BRAKE ASSEMBLIES

PART#	L/R	CAP	SIZE	REDNECK	DEXTER	AL-KO
K23-47	L	2K	7" x 1-¼"	23-47	K23-047-00	
K23-48	R			23-48	K23-048-00	
K23-26	L	3.5K	10" x 2-¼"	23-26	K23-026-00	
K23-27	R			23-27	K23-027-00	
K23-105	L	5.2K	12" x 2"	23-105	K23-105-00	
K23-106	R			23-106	K23-106-00	
K23-180	L	7K	12" x 2"	23-180	K23-180-00	
K23-181	R			23-181	K23-181-00	
K23-233	L	7K	12" x 2"			363233.2
K23-234	R					
K23-464	L	7K	12" x 2"	23-464	K23-464-00	
K23-465	R	SELF ADJ.		23-465	K23-465-00	
K23-432	L	8K	12-¼" x 3-3/8"		K23-432-00	
K23-433	R				K23-433-00	
K23-434	L	8K	12-¼" x 3-3/8"		K23-434-00	
K23-435	R	SELF ADJ.		K23-435-00		
K23-450	L	9-10K	12 -¼" x 3-3/8"	23-450	K23-450-00	
K23-451	R			23-451	K23-451-00	
K23-438	L	10K	12-¼" x 4"	23-438	K23-438-00	
K23-439	R			23-439	K23-439-00	
K23-442	L	12K	12-¼" x 5"	23-442	K23-442-00	
K23-443	R			23-443	K23-443-00	
K23-446	L	15K	12-¼" x 5"	23-446	K23-446-00	
K23-447	R			23-447	K23-447-00	

THE BEST VALUE IN TRUCK PARTS

Manufactures' and replacement parts suppliers' names and numbers are used for reference purposes only, and it is not implied any part listed is a product of these manufacturers or suppliers.



LMT END CAP DISPLAY NOW AVAILABLE



010312

INDUSTRIES, INC.

PART# LMTENDCAP-1

4531 Chester Dr.
Elkhart, IN 46516
P-800.323.0647
F-574.522.5487
www.sircoind.com
sales@sircoind.com



INCLUDES:

- THE MOST POPULAR LMT PRODUCTS
- DIAGRAM FOR A 4 FOOT END CAP OR RACK (display rack not included)
- RE-ORDER CARDS

**CONTACT SIRCO OR YOUR LOCAL SIRCO
REPRESENTATIVE FOR MORE INFORMATION**

THE BEST VALUE IN TRUCK PARTS



Wheel Tite Sleeve Nut System

Developed to reduce wheel vibrations and to help prevent the unpredictable wheel-off situations. This system is specifically designed for Class 8 Truck Steer & Drive Axles, and Trailers.

Standard wheel nuts clamp against the disc surface, but fail to eliminate the extra space between the stud and stud hole. The Wheel Tite Sleeve Nut System helps lessen that space.



333SN6
6 mm Sleeve
 Steel – Steers
 Replaces M-4214

- M 22 x 1.5
- Teflon Coating
- 240 HR Salt Spray



333SN19 NEW!
19 mm Sleeve
 Designed for
 Steel/Steel-Drive
 Steel Outer/Alum. Inner-Drives
 Replaces M-4215

The “Sleeve”

- Protects and covers the threads from wear and the elements
- Reduces vibration and wear and tear on wheel ends
- Fills the gap between the stud and the stud hole and allows the rim to rest on the sleeve
- Lengths designed for specific axle applications and wheel configurations



333SN28 NEW!
28 mm Sleeve
 Designed for
 H.D. Aluminum
 Super Single-Wide Base
 Alum. Outer/Steel Inner
 Replaces M-4216



333SN39 NEW!
39 mm Sleeve
 Designed for
 Dual Aluminum-Drive Axle
 Replaces M-4217

Manufacturers' and replacement parts suppliers' names and numbers are used for reference purposes only, and it is not implied any part listed is a product of these manufacturers or suppliers.

ORDER TODAY SIRCO INDUSTRIES (800) 323-0647 sales@sircoind.com

THE BEST VALUE IN TRUCK PARTS

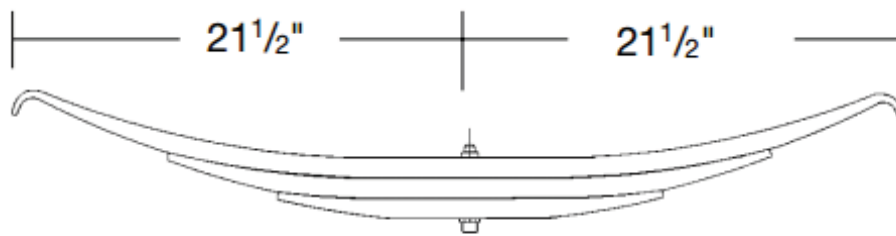


INDUSTRIES, INC.
4531 CHESTER DR. ELKHART, IN 46516

Toll Free: 800.323.0647
Fax: 574.522.5487
E-Mail: sales@sircoind.com
Web: www.sircoind.com

NEW TRAILER SPRING

SF693



THREE LEAF
4 - 1/8" ARCH
10,000 LB CAPACITY

REPLACES

FRUEHAUF	UCD 000511-001
DAYTON	TRA693
NEW LIFE	UCD0511-1-693

THE BEST VALUE IN TRUCK PARTS

Manufacturers' and replacement parts suppliers' names and numbers are used for reference purposes only, and it is not implied any part listed is a product of these manufacturers or suppliers



SIRCO INDUSTRIES, INC.

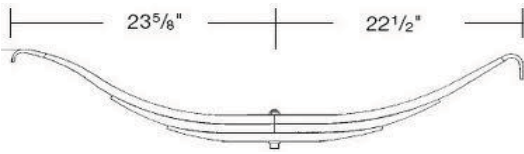
4531 CHESTER DRIVE
ELKHART, IN 46516

PHONE: 574.294.5487
TOLL FREE: 800.323.0647
FAX: 574.522.5487
EMAIL: sales@sircoind.com
WEB: www.sircoind.com

TRAILER SPRINGS

111412

SH2726

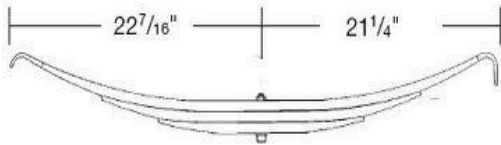


THREE LEAF - 6" ARCH - 24,000 lb. CAPACITY

REPLACES:

- DAYTON TRA-2726E
- NEW LIFE TRA-2726-SP
- AUTOMANN TRA2726
- HUTCH 354-00

SH2727

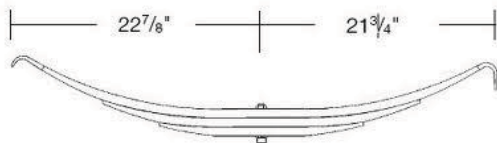


THREE LEAF - 4 1/2" ARCH - 24,000 lb. CAPACITY

REPLACES:

- DAYTON TRA-2727E
- NEW LIFE TRA-2727-SP
- AUTOMANN TRA2727
- HUTCH 355-00

SH2728



THREE LEAF - 3 5/8" ARCH - 24,000 lb. CAPACITY

REPLACES:

- DAYTON TRA-2728E
- NEW LIFE TRA-2728-SP
- AUTOMANN TRA2728
- HUTCH 356-00

THE BEST VALUE IN TRUCK PARTS

Manufacturers' and replacement parts suppliers' names and numbers are used for reference purposes only, and it is not implied any part listed is a product of these manufacturers or suppliers

UNIVERSAL JOINTS AND CENTER BEARINGS

100112



U-JOINTS

SIRCO	SERIES	AUTOMANN	CR	MERITOR	NEAPCO	SPICER	PKG
S5-103X						5-103X	1
S5-153X	1310	752.5153X	UJ369	CP153X	1-0153	5-153X	1
S5-155X	1550		UJ358	CP155X	3-0155	5-155X	1
S5-170X	1000	752.5170X	UJ338	CP170X	1-0170	5-170X	1
S5-279X	1610	752.5279X	UJ333	R279X	4-0279	5-279X	1
S5-280X	1710	752.5280X	UJ334	R280X	5-0280	5-280X	1
S5-281X	1810	752.5281X	UJ381	R281X	6-0281	5-281X	1
S5-407X	1760	752.5407X	UJ376	R407X	6-0407	5-407X	1
S5-674X	1610 ½ RD	752.5674X	UJ475	R674X	6-0674	5-674X	1
S5-675X	1710 ½ RD	752.5675X	UJ477	R675X	6-0675	5-675X	1
S5-676X	1810 ½ RD	752.5676X	UJ478	R676X	6-0676	5-676X	1
S5-677X	1760 ½ RD	752.5677X	UJ476	R677X	6-0677	5-677X	1



CENTER BEARINGS

SIRCO#	SPICER#	NEAPCO#	PKG
CB084	210084-2X	81-4011	1
CB121	210121-1X	81-5010	1
CB661	210661-1X	81-6010	1

SLINGERS INCLUDED



Sirco Industries, Inc.
4531 Chester Drive
Elkhart, IN 46516
800-323-0647
sales@sircoind.com

THE BEST VALUE IN TRUCK PARTS



INDUSTRIES, INC.

4531 CHESTER DRIVE • ELKHART, IN 46516 • (574) 294-5487

Toll Free: (800) 323-0647
Fax: (574) 522-5487
E-Mail: info@sircoind.com
Website: www.sircoind.com

BEARINGS



PART #	SET #		PART #
NEW 563	NEW 563/567	SET 425	NEW 567
572	572/580	SET 401	580
592A	592A/594A	SET 403	594A
653	NEW 592A/598A	SET 404	NEW 598A
3720	653/663	SET 405	663
NEW 47620	3720/3782	SET 406	3782
HM212011	NEW 47620/47686	SET 411	NEW 47686
HM218210	NEW HM212011/47	SET 412	NEW HM212047
NEW HM516410	HM212011/49	SET 413	HM212049
HM518410	HM218210/48	SET 414	HM218248
	NEW HM516410/49A	SET 421	NEW HM516449A
	HM518410/45	SET 415	HM518445

BEARINGS ARE PACKAGED IN POINT-OF-PURCHASE BOXES

- * CASE CARBURIZED STEEL
- *PRECISION MICRO FINISH
- *MEETS OEM SPECIFICATIONS
- *CROWN RACEWAY AND ROLLERS
- *SAE 52100

Manufactures' and replacement parts suppliers' names and numbers are used for reference purposes only, and, it is not implied any part listed is a product of these manufacturers or suppliers

SAVE * SAVE * SAVE * SAVE * SAVE

THE BEST VALUE IN TRUCK PARTS



Sealed Spring Brake Parts



PART NUMBER	DESCRIPTION
A1200	TYPE 12 SERVICE CHAMBER
A1600	TYPE 16 SERVICE CHAMBER
A2000/S	TYPE 20 SERVICE CHAMBER
A2400/S	TYPE 24 SERVICE CHAMBER
A2424S	TYPE 24/24 SEALED SPRING BRAKE
A2430S	TYPE 24/30 SEALED SPRING BRAKE
A3000/S	TYPE 30 SERVICE CHAMBER
A3030LS	3030 SPRING BRAKE LONG STROKE
A3030PB	3030 PIGGY BACK (INCLUDES DIAPHRAGM & CLAMP)
A3030PBL	3030 PIGGY BACK LONG STROKE (INCLUDES DIAPHRAGM & CLAMP)
A3030S	TYPE 3030 CHAMBER W/ CLEVIS
DT20	TYPE 20 DIAPHRAGM
DT24	TYPE 24 DIAPHRAGM
DT24LS	TYPE 24 DIAPHRAGM LONG STROKE
DT30	TYPE 30 DIAPHRAGM
DT30LS	TYPE 30 DIAPHRAGM LONG STROKE



ORDER TODAY SIRCO INDUSTRIES (800) 323-0647 sales@sircoind.com

THE BEST VALUE IN TRUCK PARTS

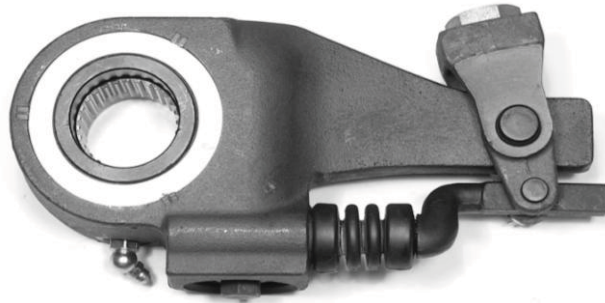


SIRCO INDUSTRIES, INC.

4531 CHESTER DRIVE • ELKHART, IN 46516 • (574) 294-5487

Toll Free: (800) 323-0647
Fax: (574) 522-5487
E-Mail: info@sircoind.com
Website: www.sircoind.com

BENDIX STYLE AUTOMATIC SLACK ADJUSTERS



- DIRECT REPLACEMENT FOR EXISTING COMPETITIVE SLACKS**
- UNHANDED DESIGN**
- CLEARANCE AND LOAD SENSING**
- LINK ROD ACTUATION**
- EASY MANUAL ADJUSTMENT**
- POSITIVE GREASE SEALING**
- CORROSION RESISTANT "E" COATING**
- 5 YEAR / 500,000 MILE ON-HIGHWAY WARRANTY**

SIRCO	BENDIX	SPLINE	ARM LENGTH
SA2164	065164	1-1/4" - 10	5-1/2"
SA2167	065167	1-1/4" - 24	5-1/2"
SA2170	065170	1-1/2" - 10	5-1/2"
SA2172	065172	1-1/2" - 10	6"
SA2174	065174	1-1/2" - 28	5-1/2"
SA2175	065175/6	1-1/2" - 28	6"
SA2178	065178	1-5/8" - 37	5-1/2"
SA2179	065179	1-5/8" - 37	6"

Manufactures' and replacement parts suppliers' names and numbers are used for reference purposes only, and, it is not implied any part listed is a product of these manufacturers or suppliers.

THE BEST VALUE IN TRUCK PARTS



SIRCO INDUSTRIES, INC.

4531 CHESTER DRIVE • ELKHART, IN 46516 • (574) 294-5487

Toll Free: (800) 323-0647
Fax: (574) 522-5487
E-Mail: info@sircoind.com
Website: www.sircoind.com

CREWSON STYLE AUTOMATIC SLACK ADJUSTERS



- DIRECT REPLACEMENT FOR EXISTING COMPETITIVE SLACKS**
- UNHANDED DESIGN**
- CLEARANCE AND LOAD SENSING**
- LINK ROD ACTUATION**
- EASY MANUAL ADJUSTMENT**
- POSITIVE GREASE SEALING**
- CORROSION RESISTANT "E" COATING**
- 5 YEAR / 500,000 MILE ON-HIGHWAY WARRANTY**

SIRCO	MACLEAN #	EUCLID	HALDEX	SPLINE	ARM LENGTH
SA21102	MK21102	E-6992A	CS52316	1-1/2" - 10	5-1/2" - 6-1/2"
SA21103	MK21103	E-6991A	CS52315	1-1/2" - 10	5" - 6"
SA21953	MK21953	E-10950A	CS52338	1-1/2" - 10	5" - 6"
SA22102	MK22102	E-6994A	CS52320	1-1/2" - 28	5-1/2" - 6-1/2"
SA22103	MK22103	E-6993A	CS52321	1-1/2" - 28	5" - 6"
SA22953	MK22953	E-10949A	CS52341	1-1/2" - 28	5" - 6"
SA23106	MK23106	E-6995A	CS52325	1-5/8" - 37	5" - 6"
SA24100	MK24100	E-6987A	CS52331	1-1/4" - 10	5-1/2"
SA25100	MK25100	E-6989A	CS52336	1-1/4" - 24	5-1/2"
SA41100	MK41100	E-10780A	CS52346	1-1/2" - 10	5-1/2"
SA41106	MK41106	E-10782A	CS52348	1-1/2" - 10	6"
SA43106	MK43106	E-10783A	CS52350	1-5/8" - 27	6"

Manufacturers' and replacement parts suppliers' names and numbers are used for reference purposes only, and, it is not implied any part listed is a product of these manufacturers or suppliers.

THE BEST VALUE IN TRUCK PARTS



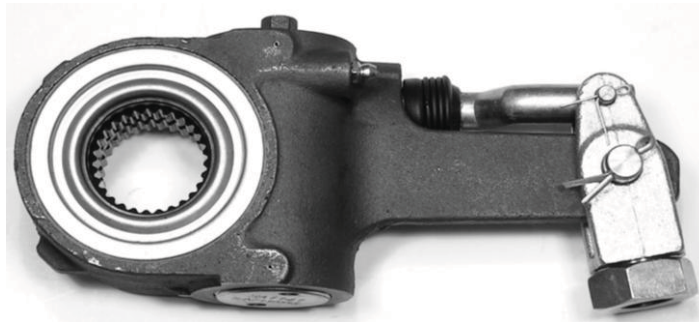
INDUSTRIES, INC.

4531 CHESTER DRIVE • ELKHART, IN 46516 • (574) 294-5487

Toll Free: (800) 323-0647
Fax: (574) 522-5487
E-Mail: info@sircoind.com
Website: www.sircoind.com

GUNITE STYLE AUTOMATIC SLACK ADJUSTERS

**ORDER
TODAY!**



**ORDER
TODAY!**

- FACTORY LUBRICATED AND SEALED**
- CLEARANCE SENSING**
- UNHANDED DESIGN**
- COMPACT HOUSING FOR EASY INSTALLATION**
- DOUBLE SEALED ACTUATOR ARM**
- DRILLED WORM WHEEL**
- O-RING ON SPLINE GEAR**
- 5 YEAR / 500,000 MILE ON-HIGHWAY WARRANTY**

SIRCO	GUNITE	SPLINE	ARM LENGTH
SA1132	AS1132/AS1146	1-1/2" - 10	5-1/2"
SA1133	AS1133/AS1147	1-1/2" - 10	6"
SA1136	AS1136/AS1152	1-1/4" - 10	5-1/2"
SA1138	AS1138/AS1154	1-1/4" - 24	5-1/2"
SA1140	AS1140/AS1149	1-1/2" - 28	5-1/2"
SA1141	AS1141/AS1151	1-1/2" - 28	6"
SA1144	AS1144	1-5/8" - 37	6"

Manufacturers' and replacement parts suppliers' names and numbers are used for reference purposes only, and, it is not implied any part listed is a product of these manufacturers or suppliers.

THE BEST VALUE IN TRUCK PARTS



INDUSTRIES, INC.

4531 CHESTER DRIVE • ELKHART, IN 46516 • (574) 294-5487

Toll Free: (800) 323-0647
Fax: (574) 522-5487
E-Mail: info@sircoind.com
Website: www.sircoind.com

HALDEX STYLE AUTOMATIC SLACK ADJUSTER



**DIRECT REPLACEMENT FOR EXISTING COMPETITIVE SLACK
ADJUSTS ON STROKE RETURN
EXTERNAL BRACKET ACTUATION
MANUAL ADJUSTMENT/LOW ROTATION FORCE
CLEARANCE SENSING
BOLT ON SLOTTED BRACKET INSTALLATION GUIDE
5 YEAR / 500,000 MILE ON-HIGHWAY WARRANTY**

SIRCO	HALDEX	MERITOR	EUCLID	SPLINE	ARM LENGTH
SA10100	40010140	R806024	E-6925B	1-1/2" - 28	5" - 6"
SA10101	40010141	R806004/26	E-6927B	1-1/2" - 28	5-1/2" - 6-1/2"
SA10102	40010142	R806023	E-6923B	1-1/2" - 10	5" - 6"
SA10103	40010143	R806022	E-6924B	1-1/2" - 10	5-1/2" - 6-1/2"
SA10144	40010144	R806016	E-6918A	1-1/2" - 28	6"
SA10211	40010211	R806019	E-6944	1-1/2" - 28	5-1/2"
SA10212	40010212	R806013	E-6942	1-1/2" - 28	6"
SA10214	40010214	R806014	E-6946	1-5/8" - 37	6"
SA10215	40010215	R806021	E-6940	1-1/2" - 10	5-1/2"
SA10216	40010216	R806015	E-6936	1-1/2" - 10	6"
SA10305	40010305	R806006	E-6933	1-1/2" - 28	6"
SA10306	40010306	R806007	E-6928	1-1/2" - 10	6"

Manufactures' and replacement parts suppliers' names and numbers are used for reference purposes only, and, it is not implied any part listed is a product of these manufacturers or suppliers.

THE BEST VALUE IN TRUCK PARTS



SIRCO INDUSTRIES, INC.

4531 CHESTER DRIVE • ELKHART, IN 46516 • (574) 294-5487

Toll Free: (800) 323-0647
Fax: (574) 522-5487
E-Mail: info@sircoind.com
Website: www.sircoind.com

MERITOR STYLE **AUTOMATIC SLACK ADJUSTERS**



**DIRECT REPLACEMENT FOR MERITOR ASA
COMPLETELY SEALED AGAINST CORROSION
FACTORY LUBRICATED
CORROSION RESISTANT PLATING
INCLUDES INSTALLATION GUIDE
INCLUDES TEMPLATE**

SIRCO	MERITOR	EUCLID	SPLINE	DRILLING
SA1041	R801041	E11398	1-1/2" - 10	5-1/2"
SA1042	R801042	E11399	1-1/2" - 10	6"
SA1073	R801073	E11401	1-1/2" - 28	5-1/2"
SA1074	R801074	E11402	1-1/2" - 28	6"

Manufacturers' and replacement parts suppliers' names and numbers are used for reference purposes only, and, it is not implied any part listed is a product of these manufacturers or suppliers.

THE BEST VALUE IN TRUCK PARTS