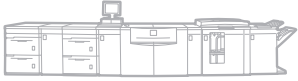


DocuColor®
5000AP
Digital Press



Xerox DocuColor® 5000AP
Digital Press
Performance that's in
a class by itself.



Productivity for everything you run.

The DocuColor 5000AP Digital Press is always impressive. For starters, it **runs all stocks at rated speeds**, including heavyweight, oversized, coated and specialty media. You can welcome even more high-value applications into your business thanks to its ability to **auto-duplex up to 300 g/m²/110 lb. cover**. It can also easily and effectively handle new demands for Variable Information (VI), faster turnarounds and Web-to-print, all of which can help you increase print volume and revenue.

Because it leverages the Right Technology, uses the Right Workflow, and facilitates the Right Business Model for your business, the DocuColor 5000AP Digital Press enables you to meet new challenges—and handle high-revenue applications in stride. So if you've been looking for **advanced productivity**, well, you just found it.



All stocks at rated speeds. VI and Web-to-print. Auto-duplex up to 100 lb. cover.



Wide media variety, outstanding performance.

The DocuColor 5000AP delivers excellent speeds with a wide media latitude. There's no slow down in page-per-minute performance for coated or heavyweight paper up to 300 g/m²/110 lb. cover. Bottom line, you can be more productive when handling higher-value jobs requiring coated or heavyweight stock.

Graphic arts image quality.

The DocuColor 5000AP sets a high standard for image quality in its class. Its exceptional print resolution is 2400 x 2400 dpi. It employs the latest 32-beam laser technology for faster data writing at higher resolutions. This advanced imaging technology improves color sweeps, high-res photos, and provides outstanding text quality. You'll also benefit from exceptional color consistency and tight front-to-back registration (+/- 1.0 mm) for two-sided printing.

Productivity is your watchword.

It's ours, too. To keep your DocuColor 5000AP Digital Press running at optimal performance, Xerox Remote Services can monitor your printer via a secure online connection and use real-time data to diagnose problems more accurately, respond more quickly and engage the right resources. In addition, with Xerox Productivity Plus, you're trained to perform your own maintenance for optimum printer operation, allowing you to realize a quicker return on your investment from the improved reliability and system uptime you will see.

The right workflow for your business. Accelerate performance and deliver increased profitability.

The Xerox FreeFlow[®] Digital Workflow Collection provides a road map to success in digital printing and helps you manage jobs from creation through final output in the quickest, smoothest, most efficient way possible.

Built on an open architecture and standards that allow integration into your existing workflow, the FreeFlow collection enables easy, affordable and highly efficient solutions for profitable short-run and VI jobs with the DocuColor 5000AP. FreeFlow helps customers connect with their customers, reduce cost with automation and enable new applications.

For more information on the FreeFlow Digital Workflow Collection, visit www.xerox.com/freeflow.

FreeFlow[®]
Digital Workflow Collection

Accelerating sales. Making it easy.

ProfitAccelerator[®] is today's most robust set of volume-building tools and resources designed to grow your business and maximize return on investment with the DocuColor 5000AP Digital Press. It brings together Xerox's unparalleled digital-printing experience and expertise, world-class resources, and industry-leading support to significantly boost your digital-print business and your profitability. Seven key resources focus on a particular aspect of the digital printing business: financial, sales and marketing, creative and design, application and development, paper and media, training and business development support.

We are here to help you build and maintain strong relationships with your customers and prospects as you increase your productivity with the DocuColor 5000AP. To learn about all the ways Xerox can help you build your business, visit www.xerox.com/driveprofit.

Profit Accelerator[®]
Digital Business Resources

Features that astonish—with performance and value. The DocuColor 5000AP Digital Press is the latest in a long list of advanced digital color printing solutions from Xerox. Built on advances that span over a dozen years, the DocuColor 5000AP Digital Press delivers an amazing combination of productivity, image quality, paper-handling versatility, print speed and affordability.



1 Feeder. Amazing paper tray flexibility lets you feed all media from all trays, enabling you to run light weight and heavy weight stocks from 16 lb. bond to 110 lb. cover (60 – 300 g/m²). With an optional Secondary Feeder Module (SFM), you can feed up to 8,000 sheets without reloading and run jobs with up to four different types of stock.

2 The User Interface (UI) is easy to use, offering greater flexibility, while providing more operator information. It lets you create and store unique paper, alignment, and decurler profiles for repeated use (see sidebar).

3 Mode Programming.

- All-Weights Mode enables all stocks to run at 50 ppm on 8.5 in. x 11 in., A4 regardless of media weight and type.
- Mixed-Media Mode optimizes throughput speed for jobs with mixed paper weights.

4 Load-While-Run Toner. Since you don't have to stop the DocuColor 5000AP when loading toner, productivity stays high. With two black toner cartridges, you'll enjoy longer print runs and greater productivity.

5 Delivers 2400 x 2400 dpi resolution, producing consistent overall color uniformity and less "jaggies" on your fine text and line art, as well as smoother gradients and vignettes. Options for different line screens are available, and the **self-cleaning Corotron Assembly** means improved productivity and image quality as well.

6 The Paper path includes auto-duplexing up to 110 lb. cover (300 g/m²). Includes stainless steel inversion and duplex paths, plays a critical role in image quality, reliability and advanced productivity with coated heavyweight stock.

Added flexibility.

You can have up to two High-Capacity Stackers inline with auto-output stacking for greater productivity and longer unattended print jobs. Put two stackers side-by-side; or have one High-Capacity Stacker and one Stacker/Stapler, or add an inline booklet maker, fusion punch, or thermal binder for a truly professional finish.



7

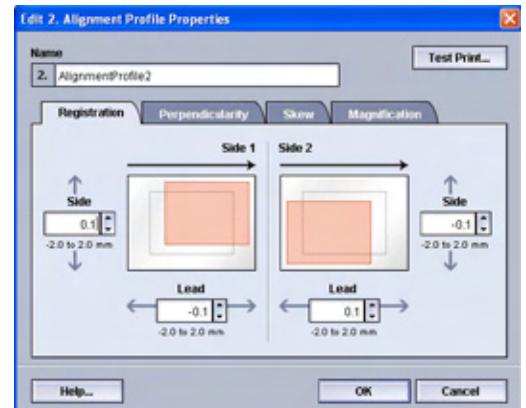
Decurlers are especially important for heavier weight papers to ensure flat output for finishing. Decurler profiles can be created at the UI for even more control over your output, if desired.

8

Optional High-Capacity Stacker. With an easy-to-roll cart for convenient offline finishing. Capacity: 3,500 (250* in top tray), all weights and sizes.

9

Optional Stacker/Stapler. Stacks up to 2,000 sheets* from 60 – 300 g/m² in all sizes. Staples 11 in. x 17 in., up to 220 g/m² in multiple locations: front corner, rear corner or dual.



Customer-Adjustable Alignment.

If you need to make adjustments to correct alignment, the Registration Technology lets you make them electronically through the User Interface. It allows the operator to set parameters which can electronically alter an image to compensate for distortions due to perpendicularity, skew, paper stretch, side shift or magnification. These electronic adjustments can be stored as Alignment Adjustment Profiles for future use.

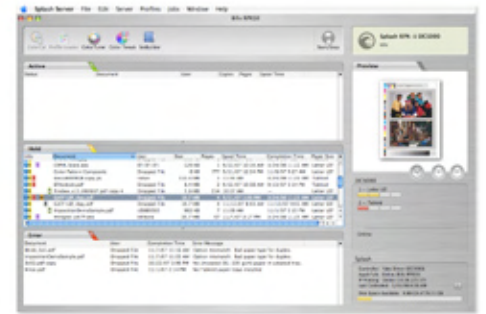
Custom Paper Profile.

Developed in response to customer requests, this is one of the most important tools on the DocuColor 5000AP. Accessed via the UI, this function lets you make adjustments—and create custom profiles—for problems associated with particular papers, such as curling or too much or too little toner in certain areas. You can set up to 10 custom profiles.

*Based on 90 g/m²/24 lb. bond.

Four powerful servers, built to serve you.

The DocuColor 5000AP combined with one of our powerful print servers—Xerox FreeFlow Print Server, Creo®, EFI®, or Splash®—offers exceptional performance and productivity with a solution as unique as your business needs. While the print servers are distinctly different and your choice will depend on your workflow and applications, they share some important values. Each uses industry-standard hardware and software to integrate with your existing workflow, supports VI solutions that will expand the jobs you are able to fulfill, and is designed to support universally accepted PDF and PostScript® file formats. They handle output from popular software tools such as QuarkXPress®, Adobe® Creative Suite, Microsoft® Word and Microsoft Publisher, while also supporting VI printing, job management and job ticketing.



EFI Splash RPX-ii Color Server



FreeFlow Print Server
(Stand is optional)



EFI Fiery® Color Server



Creo Spire™ Color Server

Paper and special media products.

Xerox offers a range of media options for the DocuColor 5000AP—from coated and uncoated papers, to labels and business cards, to synthetics and custom solutions. They can all help you handle more applications, bring in new business, and offer great new services like short-run color and one-to-one marketing in a wide variety of market segments. All of our products are rigorously tested for quality and uniformity, giving you maximum equipment uptime. In fact, Xerox is the only manufacturer of digital printing systems with a special R&D facility—the Xerox Media Technology Center.





Produce finished booklets inline that look terrific. Without spending a fortune.

Depending on your current and potential business demands, the DocuColor 5000AP is scalable to your needs. Several robust inline finishing units can be added to meet demanding customer requirements while also saving time, labor and space on the production floor. Whether you need to create full-bleed saddle-stitched booklets, or punched or thermal-bound books, all finishers available for the DocuColor 5000AP can help you capitalize on challenging jobs to support your business growth.

ColorWorks and ColorWorks PRO Document Finishers:

They allow you to create high-quality applications like brochures, marketing materials, booklets and other folded applications. The ColorWorks Document Finisher is a great way to add value to your applications, while keeping productivity high, and staying within your budget. However, for the ultimate in value-added applications, upgrade to the ColorWorks PRO Document Finisher. Both feature multiple functions like signature booklet making, side and corner stitching, offset stacking and face trimming. But the ColorWorks PRO Document Finisher also scores and bleed trims, making it even easier to create high-end booklets.



Xerox Document Binder 120-D:

This fully automated, inline binding solution utilizes a unique thermal binding technology along with pre-formed covers to create a cost-effective, high-quality, professionally finished document that rivals perfect-bound documents. The DB120-D can bind documents at the rated speed of the DocuColor 5000AP in a variety of attractive covers that can be custom ordered and imprinted with a logo or other design.



GBC FusionPunch II:

This inline printer punch solution handles a wide range of stocks, including intermixed slick and light stocks, which have been traditionally difficult to finish. Documents emerge punched and offset-stacked in the stacker, dramatically decreasing finishing time by fully preparing each document for immediate binding.



Xerox DocuColor 5000AP

Digital Press

Resolution

- 2400 x 2400 dpi
- Line Screens:
 - 600 Clustered Dot
 - 300 Clustered Dot
 - 200 Rotated Line Screen
 - 200 Clustered Dot
 - 150 Clustered Dot
 - Stochastic

Advanced Technology

- Custom paper setup
- Advanced registration technology
- Traction drive motor to reduce banding
- Stochastic screen
- User-friendly Graphic User Interface (GUI)
- RoHS-compliant for European market

Productivity/Print Speeds

- 50 ppm color (A4, 8.5 in. x 11 in.)
 - 60 – 300 g/m²
- 25 ppm color (A3, 11 in. x 17 in.)
 - 60 – 300 g/m²
- 25 ppm color (SRA3, 12 in. x 18 in.)
 - 60 – 300 g/m²
- Up to 3,000 full process color A4 (letter) 4/0 impressions per hour
- Up to 1,500 A3/SRA3 (tabloid) 4/0 impressions per hour

Paper Format/Sizes

- Maximum sheet size: 12.6 in. x 19.2 in. (320 mm x 488 mm)
- Minimum sheet size 7.2 in. x 7.2 in. (182 mm x 182 mm)
- Maximum imageable area: 12.4 in. x 18.9 in. (316 x 480 mm)

Paper Flexibility/Weights

- Coated (gloss, matte, dull, silk); uncoated; specialty stocks; labels; synthetics; transparencies; Xerox Premium Digital Carbonless Paper
- Mixed-stock jobs supported
- Media weight: 16 lb. bond/60 g/m² up to 110 lb. cover/300 g/m²

Duty Cycle

- Average monthly volume: 30,000 – 150,000
- Duty cycle: 500,000

*Based on 90 g/m²/24 lb. bond.

Paper Capacity and Handling

- Base configuration = 4,000 (2 trays, 2,000 sheets each)*
- With optional Secondary Feeder Module = +4,000 (2 trays, 2,000 sheets each)*
- Maximum size = 12.6 in. x 19.2 in.; Minimum size = 7.2 in. x 7.2 in. (all trays)
- Two-sided printing:
 - automatic up to 300 g/m²/110 lb. cover
- Automatic tray switching

Options

- 4,000-sheet Secondary Feeder Module (SFM)
- 3,750-sheet High-Capacity Stacker (HCS)
- 2,250-sheet Stacker Stapler
- Advanced inline finishing options:
 - Standard Horizon ColorWorks Document Finisher
 - Standard Horizon ColorWorks PRO Document Finisher
 - Xerox Document Binder 120-D
 - GBC Fusion Punch II
- Xerox Productivity Plus
- Xerox FreeFlow® suite of products

Choice of Print Servers

- Xerox® FreeFlow® Print Server
- Creo® Spire™ Color Server
- EFI® Fiery® Color Server
- EFI® Splash® RPX-ii Color Server

Electrical

- Base configuration: 200-240 VAC, 50/60 Hz, 30A (sole use)
- User interface:
 - A power source separate from the digital press is required for the processor and for the monitor
 - Processor: Voltage: 110-220 VAC
Frequency: 50/60 Hz
5.0-2.5 Amp
 - Monitor: Voltage: 100-240 VAC
Frequency: 50/60 Hz
2.0 Amp maximum
- Electrical requirements for Digital Press with SFM:
 - 200-240 VAC 30 Amp (sole use) for 50/60 Hz single phase (Western Hemisphere)
 - 200-240 VAC 30 Amp supply 5 kVA for 50/60 Hz single phase (Europe)
- Additional electrical required for print servers and feeding/finishing devices

Size/Weight

- Base printing system (without print server and/or feeding/finishing devices)
 - 100 in. (W) x 29.8 in. (D) x 57.5 in. (H) including UI
 - 2540 mm (W) x 757 mm (D) x 1461 mm (H)
 - Weight: 1650 lbs. (750 kg)

Designed for growth.

Whether you are a printer who prints for another business or a print shop that services in-house departments, if you want to grow your business, it's critical that your customers perceive the added value you offer.

Your customers must view you as a partner or consultant, someone who adds value by bringing ideas on how best to communicate the messages they are trying to convey. You don't want to be thought of as a necessary cost in producing the end product or as a commodity. Rather, you want to be appreciated as an expert in leveraging the best of digital-printing capabilities. By building your expertise and knowledge of your customers' businesses and the types of applications being produced by their competitors, your customers will look to you for advice on how the end product can communicate most effectively.

Contact your Xerox representative to find out more about adding a bit of color to your business.

