

RED



SIRE

SHOWCASE



2012

VOLUME 7

RED SIRE SHOWCASE 2012

The RWDCA, with the cooperation of the AI industry, is pleased to present Volume 7 of the **Red Sire Showcase**. Volume 1 included 64 sires, Volume 2, 120 sires, Volume 3, 149 sires, Volume 4, 111 sires, Volume 5, 76 sires, Volume 6, 84 sires and Volume 7 features 86 Red and Red Carrier sires from around the world! 20 of these sires are **POLLED!** This publication condenses a great deal of information into a handy, pocket-sized booklet and is the most popular publication of the RWDCA.

Proven and Young Sires are located in separate sections and alphabetized to make this publication more user-friendly. (Young Sires start on pg. 6, Proven on pg. 61) By request, a NEW NAAB listing is on pg. 4.

PERCENTAGE OF BREED BLOODLINES: For those bulls that are not 100% Holstein in the RWDCA Herdbook, the actual bloodlines by breed are listed by percentages in the upper left hand corner (Example: Savard-Red is 92% Holstein, 8% Simmental). Abbreviations include: DB - Dutch Belt, H - Holstein, I - Illawarra, L - Lineback, MR - Meuse-Rhine-Issel, M - Milking Shorthorn, MO - Montbeliarde, NR - Norwegian Red, SM - Simmental, SR - Swedish Red.

IMPORTANT: The RWDCA Open Herdbook identifies **bloodlines by breed**, not percentage of registered bloodlines.

PROTEIN PERCENT: All U.S. pedigrees are published in true protein, which is .2% less than crude protein used in other countries. For pedigrees with crude protein, it is labelled **cp**.

This publication highlights several bulls from Western Europe, where Reds are very popular. These bulls offer new bloodlines and unique qualities. Also featured are a few bulls from other red breeds. A growing number of polled (naturally hornless) sires are included, 6 of which are **homozygous polled** meaning all of their offspring will be polled. These are notated as PP in their registered names. All sires in the book are registered with the RWDCA. Selecting sires that fit your breeding goals has become much easier.

The RWDCA appreciates the cooperation of all those whose sires are included. **Thank You** for providing this excellent breeding guide! Extra copies are available free on request and will be in stock throughout 2012 and early 2013. Volume 8 is scheduled for July 2013.



Red & White Dairy Cattle Association

308B Ogden Avenue, Clinton, WI 53525 USA

Ph: 608-676-4900 or 4909 • Fax: 608-299-0800

Email: Registrations: rwdcareg@gmail.com

Promotions: rwdcastephanie@gmail.com

Website: www.redandwhitecattle.com

The officers, directors and employees of the RWDCA do not necessarily agree with the opinions expressed in The Red Sire Showcase. The RWDCA is in no way responsible for information contained in advertising in The Red Sire Showcase.

NAAB INDEX

6HO786 Mark-Red.....	78	138HO3764 Rocco P-Red.....	85
6HO787 Logan-Red	76	138HO4130 Zoro-Red	92
6HO817 Jordan-Red	70	138HO4140 Ludo-Red	36
6HO1112 Krafty-Red	72	138HO4155 Burny RF-RC.....	12
6HO1116 Leon-Red.....	73	138HO4160 Shottle-Red.....	54
6HO1120 Carmello-Red.....	65	138HO4185 Talent-Red.....	58
7HO9107 Durable-RC	67	138HO4190 Italia-Red	27
7HO9774 Accolade-Red	63	138HO4455 Hybrid P-Red	26
7HO10904 Colt P-Red.....	15	138HO4660 Seven P-Red	53
7HO11107 Lovely Man-RC.....	35	138HO4765 Leader P-Red	33
7HO11163 Ladd P-Red.....	32	138HO4885 Holiday-Red	25
7HO11309 Any-Red.....	8	138HO4954 Relief P-RC.....	48
7HO11436 Advance-Red.....	9	138HO5093 Fabric-Red-BC	22
7HO11480 Classic-Red.....	14	140HO2082 Ludovic-Red	77
7HO11497 Rudolph-Red.....	50	140HO2083 Leonid-Red	75
7HO11596 Defiant-RC.....	16	140HO2092 Monster-RC	80
7HO11608 Mozygus-PP-Red.....	40	140HO2105 Jack P-Red.....	68
7HO11703 Armani-RC.....	6	162HO46 Sparrow-RC	88
7HO11754 Magenta-Red.....	38	202HO290 Jotan-Red.....	71
54HO552 Barbwire-Red.....	11	202HO808 Snow RF-RC	55
54HO553 Bernie-RC.....	43	202HO824 Jorck-Red.....	30
54HO559 Realtime-Red	45	204HO5011 Carmano-Red.....	64
54HO582 Kindman-Red.....	31	250HO892 Red Rock-Red.....	84
70HO9954 Redman-Red	83	250HO946 Detonator-Red-BC.....	17
76HO541 Mazda-Red	79	250HO956 Redshot-Red	47
76HO550 Tundel-Red.....	90	250HO1019 Lugano-Red	37
76HO582 Absolute-Red.....	62	250HO947 Detour-Red-BC	18
76HO663 Java-Red	28	250HO950 Secure-Red	52
80HO317 Redliner-Red.....	82	250HO990 Sandbank-RC.....	51
80HO327 Red Empire-Red	46	250HO2209 Selayo-Red.....	87
80HO329 Jigsaw-Red	29	506HO252 Magua-PP-RC	39
100HO11295 Legend-Red.....	34	525HO102 Ready-Red	44
106HO2754 Proxy PP-Red	42	624HO2393 Jerudo-Red	69
106HO2864 Special Effect P-Red	57	196WW12641 Savard-Red.....	86
106HO2865 Special Dual PP-Red.....	56	196WW13764 Leonard-Red.....	74
106HO3074 Dolo P-RC	19	196WW15179 Red-Boy-Red.....	81
120HO1637 Dominant PP-Red.....	20	196WW18059 Globull-Red	23
120HO1956 Alex-II-P-RC.....	7	196WW19356 Texas-Red.....	59
138HO3206 Vincent-Red	91		

YOUNG SIREs

April-Day SSI MX Any-Red-ET	8	Lirr Special Effect P-Red-ET	57
Ariwami Aaron Advance-Red	6	Morsan Fabric-Red-BC	22
ASAP P-Red	10	Mr Apples Armani-ET-RC	9
Brandshaven Lugano-Red-ET	37	Mr BTR Shottle Burny RF-RC	12
Burket-Falls Alex-II-P-RC	7	Northwind-KC Leader P-Red-ET	33
Burket-Falls Dominant PP-Red	20	Ostretin Magua-PP-RC	39
Crackholm Secure-Red-ET	52	Pine-Tree Relief P-RC	48
CS-Redvue Classic-Red-ETS	14	Rainyridge Bernie-ET-RC	43
Don Juan-Red	21	Ri-Val-Re Obsrvr Dolo P-ET-RC	19
Eastwest Red Empire-Red-ET	46	Ri-Val-Re Shottle-Red-ET	54
Ernest-Anthony Java-Red-ET	28	Rockymountain Sandbank-ET-RC	51
Eskdale Magenta-Red-ET	38	S-S-I SL Mozygus-PP-Red-ET	40
Ever-Green-View Ludo-Red-TW	36	Sandy-Loam M-O-M Lovely Man-RC	35
Fradon Jigsaw-Red-ET	29	Sandy-Valley Carsen-Red-ET	13
Gold-Red-BC	24	Sandy-Valley Colt P-Red-TW	15
Gold-N-Oaks Italia-Red-ET	27	Sandy-Valley Seven P-Red-ET	53
Gold-N-Oaks Shot Talent-Red	58	Scientific B Defiant-ET-RC	16
Golden-Oaks Parma-PP-Red-ET	41	Snow RF-RC	55
Greenlea Ready-Red	44	Spruce-Haven Kindman-Red-ET	31
Hickorymea Remake-P-Red-TW	49	Stoneden Detonator-Red-BC	17
Hol-Star LK Realtime-Red-ET	45	Stoneden Detour-Red-BC	18
Hylite Barbwire-Red-ET	11	Stoneden Redshot-Red-BC	47
Ja-Bob Holiday-Red	25	Texas-Red-ET	59
Ja-Bob Hybrid P-Red-ET	26	Tiger-Lily Ladd P-Red-ET	32
Jorck-Red	30	Toppoll P-Red	60
Kenmore Rudolph-Red-ET	50	Venture Proxy PP-Red-ET	42
Lavas Legend-Red-ET	34	Vialperry Acme Globull-Red	23
Lirr Special Dual PP-Red-ET	56		



RWDCA Young Sire

Sampling Incentive Program

**Sires with this symbol are enrolled in RWDCA's YSSIP program.

**Registrations received before the expiration date listed will receive a \$1 discount/registration for sons and daughters from these sires.



ADVANCE-RED

Born: 1/5/11 • USA 141016641 • aAa 345 • DMS 456

Dam



7HO11436

Ariwami O Man Bree 1947-RC (VG-85)
3-00 365d 29,050 3.5% 1028 3.2% 928

ARIWAMI AARON ADVANCE-RED

AARON X O MAN X SAVAGE X STORM X JUROR X HIGHLIGHT
S: Ladinodale Aaron-Red-ET

D: Ariwami O Man Bree 1947-RC (VG-85)
3-00 365d 29,050 3.5% 1028 3.2% 928

MGS: O-Bee Manfred Justice-ET (EX-94 GM)

2nd Dam: Ariwami Savg Bree 1642-Red (VG-85)
3-11 365d 31,330 3.9% 1207 3.1% 982

3rd Dam: Ariwami Storm Brenda 1079-RC (VG-85 VG-MS)

- Elite GTPI and NM\$ among the Red breed
- Unique sire stack for Red - Aaron x O Man x Savage
- Select Sires sire father for Red sons
- High components and outstanding type traits



Select Sires, Inc.
11740 US 42 North
Plain City, OH 43064
Phone: 614-873-4683
Fax: 614-873-5751

Email: info-line@selectsires.com
www.selectsires.com

ALEX-II-P-RC

Born: 11/20/10 • USA 141048457 • aAa 462



YOUNG
SIRE

120HO1956

Dam



Burket-Falls SR Sarayn-P-RC
(EX-93-3E GMD DOM)

BURKET-FALLS ALEX-II-P-RC

ALEXANDER X RUDOLPH X BLACKSTAR X ENHANCER X CAVALIER

S: Golden-Oaks St Alexander-ET

D: Burket-Falls SR Sarayn-P-RC (EX-93-3E GMD DOM)

4-11 365d 36,400 4.9% 1785 3.5% 1251

Lifetime: 230,000+ 4.9% 3.5%

MGS: Startmore Rudolph-ET (VG-85 GM)

2nd Dam: Burket-Falls BS Savina-ET-RC (EX-91-2E GMD DOM)

Lifetime: 126,660 4.3% 5416 3.2% 4031

3rd Dam: Burket-Falls Shania-Red-ET (VG-85 GMD DOM)

Lifetime: 129,920 4.3% 5631 3.1% 4044

4th Dam: Burket-Falls Ca-Lil Silver-ET (VG-86 GMD DOM)

Lifetime: 150,739 3.9% 5852

5th Dam: Burket-Falls Elevation Sophia (EX-93-4E GMD DOM)

Lifetime: 241,534 4.1% 10022

- **POLLED!**
- **Unique outcross genetics!**
- **5 nearest dams ALL VG or EX**
- **5 nearest dams ALL GMD and DOM**
- **5 nearest dams ALL over 125,000M with 4.0%F**



The Solution to Your "Horny" Problems

Burket Falls Farm

Dave Burket & Sons

1321 Polecat Rd • East Freedom, PA 16637

Ph: 814-239-2260 • www.burketfalls.com

Email: burketfallsfarm@aol.com

ANY-RED

Born: 5/9/10 • USA 69002457 • aAa 264 • DMS 456



7HO11309

Dam



April-Day S Verdejo-RC
(VG-86 DOM)

APRIL-DAY SSI MX ANY-RED-ET

MATRIX X SHOTTLE X RUBENS X ELEGANT X MILESTONE

S: Mi-Ro-Ze Mrmx Matrix-Red-ET

D: April-Day S Verdejo-RC (VG-86 DOM)

2-04 365d 26,312 3.7% 974 3.0% 780

MGS: Picston Shottle-ET (EX-96 GM)

2nd Dam: Cityview Ruby Wine-Red (VG-88 EX-MS)

2-05 365d 26,110 3.8% 996 3.0% 774

3rd Dam: Cityview Elegant Freckles-Red (VG-85)

Lifetime: 209,018 3.6% 7535 2.8% 5853

Next 2 Dams: VG-85, VG-88 12*

- Outcross RED - No Advent, Storm, Goldwyn, Durham or O Man
- Great production mating, especially for Destry daughters!
- Straight from a cow family known to transmit!



Select Sires, Inc.
11740 US 42 North
Plain City, OH 43064
Phone: 614-873-4683
Fax: 614-873-5751
Email: info-line@selectsires.com
www.selectsires.com

ARMANI-RC

Born: 11/29/10 • USA 68571374 • aAa 234

Dam



YOUNG
SIRE

7HO11703

KHW Regiment Apple-Red-ET (EX-95-2E EX-MS DOM)
4-01 365d 35,750 4.7% 1682 3.5% 1274



MR APPLES ARMANI-ET-RC

GOLDWYN X REGIMENT X DURHAM X PRELUDE X JUBILANT

S: Braedale Goldwyn (GP-84 GM)

D: KHW Regiment Apple-Red-ET (EX-95-2E EX-MS DOM)

4-01 365d 35,750 4.7% 1682 3.5% 1247

MGS: Carrousel Regiment-Red-ET (VG-85)

2nd Dam: Kamps-Hollow Altitude-ET-RC (EX-95-2E EX-MS DOM)

7-00 365d 39,690 4.7% 1849 3.3% 1310

3rd Dam: Clover-Mist Alisha-ET-RC (EX-93-3E DOM)

4th Dam: Clover-Mist Augy Star-ET-RC (EX-94-4E DOM)

5th Dam: D-R-A August (EX-96-4E DOM)

6th Dam: D-R-A Ideal Precious Leader (EX-90-2E)

7th Dam: D-R-A Princess Lad Leader (EX-90-3E)

- Bred to make fancy ones for tanbark success
- Goldwyn x Apple, Grand Champion at World Dairy Expo's Grand International Red & White Show 2011
- One of the breed's highest GTPI RC young sires with high type, outstanding component percents and pleasing fitness



Select Sires, Inc.
11740 US 42 North
Plain City, OH 43064
Phone: 614-873-4683
Fax: 614-873-5751

Email: info-line@selectsires.com
www.selectsires.com

ASAP P-RED

Born: 2/12/11 • NLD 692374294

Sire



YOUNG
SIRE

Fasna Asterix-Red

ASAP P-RED

ASTERIX X MANITAS

S: Fasna Asterix-Red

D: Massia 70 (GP-84)

MGS: Southland Manitas-RC

2nd Dam: Massia 26 (VG-86)

305d 26,532 4.2% 1122 3.6% 942

- Outcross genetics!
- High protein
- Very good feet & legs
- Outstanding udders
- Good calving traits
- POLLED!



German Genetics International
Ag-Link International, Inc.
78 Baker Road
Tunkhannock, PA 18657
Phone: 570-836-6593
Email: aglinks@aol.com
www.ag-link.com



BARBWIRE-RED

Born: 11/18/09 • CAN 9748330 • aAa 312456 • DMS 234,345

Dam



54HO552



Rainyridge Talent Barbara-RC (EX-95)
1st 5-Yr-Old World Dairy Expo & Royal Winter Fair 2010

HYLITE BARBWIRE-RED-ET

SHAQUILLE X TALENT X OUTSIDE X MILAN X TONY X TEMPO

S: Deslacs Shaquille-ET-RC

D: Rainyridge Talent Barbara-RC (EX-95)

1st 5-Yr-Old World Dairy Expo 2010 & Royal Winter Fair 2010

3-04 365d 34,465 3.6% 1257 3.3% 1133

MGS: Ladino Park Talent-IMP-ET-RC (EX)

2nd Dam: RF Outside Breeze-ET (EX-93)

4-02 334d 31,920 4.7% 1488 3.5% 1113

3rd Dam: Raverley Briana Milan-ET (EX-2E 4*)

4th Dam: Rainyridge Tony Beauty (EX-5E 9*)

World Dairy Expo Grand Champion 1999

5th Dam: Despics Tempo Diane (VG-85)

- A pedigree filled with famous show dams!
- From the heart of Rainyridge breeding
- Qualifies for worldwide use
- Very high type traits
- Plus for components
- Tremendous flush interest!



International Protein Sires

PO Box 157

Rock Springs, WI 53961

Phone: 800-542-7593

Fax: 608-524-6935

Email: sires@ourhelp.net

www.ipssires.com

BURNY RF-RC

Born: 1/31/08 • USA 84003001031158 • aAa 231 • DMS 234,345

Dam



138HO4155



Ri-Val-Re Shtle Caralie-ET-RC (VG-86)
2-01 305d 32,865 5.0% 1634 3.0% 981

MR BTR SHOTTLE BURNY RF-RC (VG-85)

MR BURNS X SHOTTLE X MARMAX X PATRON X AEROSTAR

S: Dudoc Mr Burns-ET-RC (VG-85)

D: Ri-Val-Re Shtle Caralie-ET-RC (VG-86)

2-01 305d 32,865 5.0% 1634 3.0% 981

MGS: Picston Shottle-ET (EX-96 GM)

2nd Dam: Ms Ri-Val-Re Max Selsy-ET (VG-87)

5-03 325d 25,346 3.5% 1359 2.9% 743

3rd Dam: Hesters RL Patron Lucy-ET (VG-86)

2-10 365d 36,690 3.8% 1358 3.0% 1088

4th Dam: SFL Aerostar S Lett-ET (VG-87)

5th Dam: SFL Enhancer Scarlette-Red (VG-89 GMD DOM)

Next 2 Dams: EX-94-3E GMD DOM Fagn Scarlet, EX-95-3E Scarlet

- Early Mr Burns son from the Scarlet family
- Dam with 5.0% butterfat test
- Terrific udders and promising production

ABC Genetics

Worldwide
Jean-Louis Schrago
Ch-1299 Crans
Switzerland

Mobile: +41 79 200 48 14

Fax: +41 22 361 06 50

Email: abc.gen-schrago@bluewin.ch

www.abcgenetics.com



CARSEN-RED

Born: 9/19/11 • USA 70358171

Maternal Brother



Sandy-Valley Seven P-Red-ET (VG-87)



Dam



Sandy-Valley-W B Crystal-ET-RC
(VG-86)

SANDY-VALLEY CARSEN-RED-ET

DESTRY X BOLTON X SEPTEMBER STORM

S: Scientific Destry-ET-RC (VG-88)

D: Sandy-Valley-W B Crystal-ET-RC (VG-86)

2-01 365d 36,350 1005 1133

MGS: Sandy-Valley Bolton-ET (EX-90 GM)

2nd Dam: Ralma S Storm CF Crimson-ET (VG-87)

2-06 312d 29,540 3.5% 1021 3.1% 928

3rd Dam: Ralma Christmas Fudge-ET (VG-88 GMD DOM)

4th Dam: Ralma Juror Faith (EX-91 GMD DOM)

5th Dam: Ralma Leadman Fashion (VG-89)

- RED Destry son!
- Maternal brother to Colt P-Red & Seven P-Red
- Total package - TYPE & PRODUCTION!

ABC Genetics

Worldwide
Jean-Louis Schrago
Ch-1299 Crans
Switzerland

Mobile: +41 79 200 48 14

Fax: +41 22 361 06 50

Email: abc.gen-schrago@bluewin.ch

www.abcgenetics.com



CLASSIC-RED

Born: 11/15/09 • USA 68991094 • aAa 234

Dam



7HO11480

2nd Dam



MD-Valleyvue Gold Candy-ET-RC (EX-91 EX-MS)
3-09 365d 26,460 4.4% 1164 3.3% 866

MD-Valleyvue Storm Clar-Red
(EX-92-2E EX-MS)

CS-REDRVUE CLASSIC-RED-ETS

REALITY X GOLDWYN X SEPTEMBER STORM X MONET

S: Hurtgen-Vue Reality-Red (VG-88)

D: MD-Valleyvue Gold Candy-ET-RC (EX-91 EX-MS)

3-09 365d 26,460 4.4% 1164 3.3% 866

MGS: Braedale Goldwyn (GP-84 GM)

2nd Dam: MD-Valleyvue Storm Clar-Red (EX-92-2E EX-MS)

4-04 365d 30,970 4.6% 1431 3.1% 964

3rd Dam: OConnors Monet Clara-Red-ET (EX-92)

Lifetime: 223,450 3.4% 7654 3.1% 6936

Next 8 Dams: VG-85 5*, EX-90 DOM, EX-96-3E GMD DOM, EX-94-2E GMD, EX-90 GMD DOM 30*, EX-97-4E GMD 6*, EX 6*, VG-85 5*

- RED Roxy son!
- Something different - Goldwyn blood for Red breeders
- 3 generations of EX EX-MS dams from the same cow family as proven sire Gold Chris-RC
- Add type and RED to your breeding program



Select Sires, Inc.
11740 US 42 North
Plain City, OH 43064
Phone: 614-873-4683
Fax: 614-873-5751
Email: info-line@selectsires.com
www.selectsires.com

COLT P-RED

Born: 9/15/09 • USA 68731810 • aAa 243 • DMS 234,246

Dam



7HO10904

Sandy-Valley-W B Crystal-ET-RC (VG-86)
2-01 365d 36,350 2.8% 1005 3.1% 1133

SANDY-VALLEY COLT P-RED-TW

LAWN BOY P X BOLTON X SEPTEMBER STORM

S: Aggravation Lawn Boy P-Red (EX-93 GM)

D: Sandy-Valley-W B Crystal-ET-RC (VG-86)

2-01 365d 36,350 2.8% 1005 3.1% 1133

MGS: Sandy-Valley Bolton-ET (EX-90 GM)

2nd Dam: Ralma S Storm CF Crimson-ET (VG-87)

2-06 312d 29,540 3.5% 1021 3.1% 928

3rd Dam: Ralma Christmas Fudge-ET (VG-88 GMD DOM)

4th Dam: Ralma Juror Faith (EX-91 GMD DOM)

5th Dam: Ralma Leadman Fashion (VG-89)

- Elite POLLED Red bull in the breed!
- Exceptional SCR for high fertility
- Great production, elite fitness traits & outstanding type!



Select Sires, Inc.
11740 US 42 North
Plain City, OH 43064
Phone: 614-873-4683
Fax: 614-873-5751
Email: info-line@selectsires.com
www.selectsires.com

DEFIANT-RC

Born: 1/23/11 • USA 141123484 • aAa 432 • DMS 234

Dam



Scientific Gold Dior Rae-ET-RC (EX-92 EX-MS DOM)
2-02 365d 31,900 4.7% 1484 3.5% 1112

YOUNG
SIRE

7HO11596

2nd Dam



Scientific Debutante Rae-ET-RC
(EX-92 EX-MS GMD DOM)

SCIENTIFIC B DEFIANT-ET-RC

BRAXTON X GOLDWYN X DURHAM X JUBILANT X TONY

S: Regancrest S Braxton-ET (EX-95)

D: Scientific Gold Dior Rae-ET-RC (EX-92 EX-MS DOM)

2-02 365d 31,900 4.7% 1484 3.5% 1112

MGS: Braedale Goldwyn (GP-84 GM)

2nd Dam: Scientific Debutante Rae-ET-RC (EX-92 EX-MS GMD DOM)

2-02 365d 32,930 4.4% 1440 3.2% 1070

3rd Dam: Scientific Jubilant Rae-ET-RC (EX-90 DOM)

5-11 365d 38,880 4.1% 1608 3.4% 1329

4th Dam: C Hanoverhill Tony Rae (EX-96-3E GMD DOM)

6-11 365d 40,220 4.1% 1661 3.3% 1331

Next 5 Dams: EX-90 GMD DOM 30*, EX-97-4E GMD 6*, EX 6*, VG-85 5*

- Leading Red or Red Carrier bull for type
- The power of Gold Dior Rae through Roxy greatness
- Made to make dairy frames, big sweeping rib and fabulous udders for show ring greatness



Select Sires, Inc.
11740 US 42 North
Plain City, OH 43064
Phone: 614-873-4683
Fax: 614-873-5751

Email: info-line@selectsires.com
www.selectsires.com

DETONATOR-RED-BC

Born: 10/21/08 • CAN 8360698 • aAa 132



250HO946

Dam



Islehaven Gold Dancer-Red-BC
(VG-88)

STONEDEN DETONATOR-RED-BC (VG-85-1Y)

BAXTER X GOLDWYN X LEE X CHARLES X TREASURE

S: Emerald-Acr-SA T-Baxter (EX-91)

D: Islehaven Gold Dancer-Red-BC (VG-88)

Nominated All-World Red & White Cow 2012

2-02 365d 20,465 4.5% 922 3.3% 683cp

MGS: Braedale Goldwyn (Extra)

2nd Dam: MarkTwain Lee Diana (VG-85 2*)

3-06 365d 19,385 3.8% 730 3.0% 589cp

3rd Dam: MarkTwain Charles Dixie (EX-90)

Life: 157,069 4.1% 6385 3.1% 4934cp

4th Dam: MarkTwain Yolanda-Red (VG-86)

5th Dam: MarkTwain TT Yvonne (VG-86)

- World's only Red Baxter son?
- Carries variant Red gene (*BC)
- 50% of calves will be R&W, even from B&W cows
- Available in U.S. from Accelerated Genetics



GenerVations
PO Box 568
Campbellville, Ontario L0P 1B0 Canada

Toll Free: 800-244-5744

Phone: 905-873-8700

Fax: 905-877-1394

Email: info@generations.com

www.generations.com



Accelerated Genetics

Phone: 800-451-9275

Email: info@accelgen.com

www.accelgen.com

DETOUR-RED-BC

Born: 9/8/08 • CAN 8360695 • aAa 354



**YOUNG
SIRE**

250HO947

Dam



**Islehaven Gold Dancer-Red-BC
(VG-88)**

STONEDEN DETOUR-RED-ET-BC (VG-85-2Y)

BOLTON X GOLDWYN X LEE X CHARLES X TREASURE

S: Sandy-Valley Bolton-ET (EX-90)

D: Islehaven Gold Dancer-Red-BC (VG-88)

Nominated All-World Red & White Cow 2012

2-02 365d 20,465 4.5% 922 3.3% 683cp

MGS: Braedale Goldwyn (Extra)

2nd Dam: MarkTwain Lee Diana (VG-85 2*)

3-06 365d 19,385 3.8% 730 3.0% 589cp

3rd Dam: MarkTwain Charles Dixie (EX-90)

Life: 157,069 4.1% 6385 3.1% 4934cp

4th Dam: MarkTwain Yolanda-Red (VG-86)

5th Dam: MarkTwain TT Yvonne (VG-86)

- **World's only Red Bolton son?**
- **Carries variant Red gene (*BC)**
- **50% of calves will be R&W, even from B&W cows**
- **Available in U.S. from Accelerated Genetics**



GenerVations
PO Box 568
Campbellville, Ontario L0P 1B0 Canada
Toll Free: 800-244-5744
Phone: 905-873-8700
Fax: 905-877-1394
Email: info@generations.com
www.generations.com



Accelerated Genetics
Phone: 800-451-9275
Email: info@accelgen.com
www.accelgen.com



DOLO P-RC

Born: 4/26/11 • USA 70600476 • aAa 132546

Maternal Sister



Ri-Val-Re Soto Erin P-ET-RC



106HO3074

3rd Dam



Ri-Val-Re Range Redwing-Red
(VG-88 GMD DOM)

RI-VAL-RE OBSRVR DOLO P-ET-RC

OBSERVER X LAWN BOY P X ADVENT X RANGER X FACTOR

S: DE-SU Observer-ET (VG-86)

D: Ri-Val-Re LB Mini-P-Red-ET

MGS: Aggravation Lawn Boy P-Red (EX-93 GM)

2nd Dam: Ri-Val-Re Adv Win-Go-Red-ET (EX-90 EX-MS)

2-03 365d 27,620 4.2% 1151 3.4% 930

3rd Dam: Ri-Val-Re Range Redwing-Red (VG-88 GMD DOM)

4-05 365d 35,690 4.2% 1488 3.1% 1119

Lifetime: 139,910 4.0% 5527 3.1% 4339

4th Dam: Elm-Park Celeste-ET (G-77-3Y)

5th Dam: Allimar Misty Calico-Red (EX-90 DOM)

6th Dam: Allimar Cavalier Chestnut-Red (VG-88)

7th Dam: Fleetridge Pilot Coconut (VG-85)

- #1 GTPI, #1 NM\$ and #1 Milk RC Polled bull - April 2012
- High PTAT RC Polled Observer son
- Sire of sons
- Ri-Val-Re Ranger Redwing-Red family
- Owned by Ri-Val-Re Holsteins

DairyBullsOnline.com



Phone: 855-222-2013
Email: info@dairybullsonline.com
www.dairybullsonline.com



DOMINANT PP-RED

Born: 1/31/09 • USA 139831515 • aAa 5136



YOUNG
SIRE

120HO1637

Dam



Burket-Falls Durene-Red*PC
(EX-91-2E EX-MS)

BURKET-FALLS DOMINANT PP-RED (VG-87-3Y)

PLEDGE X POLL PARTY X MOMENTUM X LEADER X FAGIN

S: Burket-Falls Polled Pledge P-ET-RC (EX-90)

D: Burket-Falls Durene-Red-PC (EX-91-2E EX-MS)

4-01 365d 34,828 4.1% 1434 3.1% 1088

Lifetime: 160,000 4.5% 7200 3.3% 5280

MGS: Burket-Falls Poll Party-Red-PC

2nd Dam: Burket-Falls Dee Dee-Red-ET (EX-90-2E EX-MS)

4-04 365d 31,240 3.5% 1090 3.3% 1029

Lifetime: 201,080 3.7% 7490 3.2% 6519

3rd Dam: Burket-Falls Danish-Red-ET (VG-87)

4th Dam: Burket-Falls Dana-Red (VG-89 EX-MS)

5th Dam: Burket-Falls CG Darkstar (EX-90 EX-MS)

6th Dam: Burket-Falls Starboots (EX)

7th Dam: Breezy-Hollow Ivan Starlight (VG-89)

- HOMOZYGOUS POLLED! ALL of his offspring will be POLLED!
- A2A2
- Maternal brother to Dazzler P-Red (VG-86-1Y) by Advent
- Additional semen available featuring polled and Red genetics - Call for details!



The Solution to Your "Horny" Problems

Burket Falls Farm

Dave Burket & Sons

1321 Polecat Rd • East Freedom, PA 16637

Ph: 814-239-2260 • www.burketfalls.com

Email: burketfallsfarm@aol.com

DON JUAN-RED

Born: 8/24/10 • DEU 536741555 • aAa 231465



YOUNG
SIRE

Dam



Charpentier FBI Sierra-ET-RC
(VG-89 1*)

DON JUAN-RED

DURHAM-RED X FBI X TALENT X DURHAM X FORMATION

S: Durham-Red

D: Charpentier FBI Sierra-ET-RC (VG-89 1*)

5-00 365d 53,369 3.6% 1938 3.2% 1715cp

MGS: Gillette Brilea FBI (EX-94)

2nd Dam: Gen-I-Beq Talent Spectra-Red-ET (VG-85-2Y 11*)

4-08 365d 41,204 3.9% 1612 3.5% 1448

3rd Dam: Glen Drummond Splendor-ET-RC (VG-86-2Y 26*)

4-10 305d 25,926 4.2% 1098 3.2% 818cp

4th Dam: Glen Drummond Aero Flower-RC (VG-88 18*)

5th Dam: Glen Drummond Shower-ET (EX 13*)

Next 4 Dams: EX-2E 7*, VG-85 4*, VG, VG

- Very good linear traits
- Excellent fitness values
- Excellent feet & legs
- Perfect udders
- Outstanding udder health
- Unique pedigree



German Genetics International

Ag-Link International, Inc.

78 Baker Road

Tunkhannock, PA 18657

Phone: 570-836-6593

Email: aglinks@aol.com

www.ag-link.com





FABRIC-RED-BC

Born: 7/31/11 • CAN 11254429

Dam



138HO5093

2nd Dam



Morsan Onward Fools Gold-Red-BC (GP-83-2Y)
2-03 276d 18,362 4.2% 763 3.0% 551cp inc.

Stoneden Fools Gold-Red-BC
(VG-88 1*)

MORSAN FABRIC-RED-BC

DORCY X ONWARD X GOLDWYN X LEE X CHARLES X TREASURE
S: Coyne-Farms Dorcy-ET

D: Morsan Onward Fools Gold-Red-BC (GP-83-2Y)
2-03 276d 18,362 4.2% 763 3.0% 551cp inc.

MGS: Andacres Morty Onward (VG-88)

2nd Dam: Stoneden Fools Gold-Red-BC (VG-88 1*)
4-03 365d 50,748 3.8% 1942 2.9% 1462cp

3rd Dam: MarkTwain Lee Diana (VG-85 2*)

4th Dam: MarkTwain Charles Dixie (EX-90)

5th Dam: MarkTwain Yolanda-Red (VG-86)

6th Dam: MarkTwain TT Yvonne (VG-86)

- Highest GTPI and PTAT variant Red bull ever
- Carries variant Red gene (*BC)
- 50% of calves will be R&W, even from B&W cows
- Owned by Van Den Pol Dairy and Corien Van Den Pol
- Extremely limited semen supply

DairyBullsOnline.com



Phone: 855-222-2013
Email: info@dairybullsonline.com
www.dairybullsonline.com



GLOBULL-RED

Born: 9/2/08 • CHE 120070778257 • aAa 324 • DMS 156

Daughter



**YOUNG
SIRE**

196WW18059



Globull Irene-Red

VIALPERRY ACME GLOBULL-RED (VG-87)

ACME X GLACIER X MARS

S: KHW Elm-Park Acme-ET-RC (EX-90 GM)

D: Vialperry Glacier Dina-Red (VG-87)

Lifetime: 59,892 3.7% 2229 3.3% 1969 (in production)


MGS: Sunnylodge Glacier-Red-ET (EX-93)

MGGs: Mars-Red-ET

- Early RED son of Acme (Talent x Durham)
- High type scores
- High milk production

WORLDWIDE



swissgenetics 

Swissgenetics
Meielenfeldweg 12,
3052 Zollikofen, Switzerland

T +41 31 910 62 62
info@swissgenetics.ch
www.swissgenetics.com

GOLD-RED-BC

Born: 1/13/11 • CHE 120093681213 • aAa 123465



**YOUNG
SIRE**

2nd Dam



Stoneden Fools Gold-Red-BC
(VG-88 1*)

GOLD-RED-BC

SANCHEZ X PRONTO X GOLDWYN X LEE X CHARLES X TREASURE

S: Gen-Mark Stmatic Sanchez (EX-94)

D: Morsan Pronto Fools Gold-Red-BC (VG-85)

2-08 345d 35,882 3.7% 1334 3.2% 1131cp

MGS: Windy-Knoll-View Pronto-ET (EX-95)

2nd Dam: Stoneden Fools Gold-Red-BC (VG-88 1*)

4-03 365d 50,748 3.8% 1942 2.9% 1462cp

3rd Dam: MarkTwain Lee Diana (VG-85 2*)

4th Dam: MarkTwain Charles Dixie (EX-90)

5th Dam: MarkTwain Yolanda-Red (VG-86)

6th Dam: MarkTwain TT Yvonne (VG-86)

- Sanchez son that carries variant Red gene (*BC)
- 50% of calves will be R&W, even from B&W cows
- Very good feet & legs
- Outstanding udders
- Quality conformation
- Longevity
- Excellent udder health



German Genetics International

Ag-Link International, Inc.

78 Baker Road

Tunkhannock, PA 18657

Phone: 570-836-6593

Email: aglinks@aol.com

www.ag-link.com



HOLIDAY-RED

Born: 12/12/10 • USA 69043519 • aAa 243



**YOUNG
SIRE**

138HO4885

4th Dam



**Ohiana Mom Handmaid-Red-ET
(EX-91 DOM)**

JA-BOB HOLIDAY-RED

CAMARY ISY X LAWN BOY P X STADEL X PHIDEAUX X MOMENTUM

S: Camary Isy-RC

D: Ja-Bob LawnBoy Holiday-Red (VG-87)

2-10 365d 29,820 4.6% 1367 3.6% 1066

MGS: Aggravation Lawn Boy P-Red (EX-93 GM)

2nd Dam: Ja-Bob Stadel Holly-Red-ET (EX-90 EX-MS)

4-01 365d 33,440 4.2% 1416 3.6% 1190

3rd Dam: Ja-Bob Phideau Hanna-Red-ET (EX-90 EX-MS DOM)

3-10 365d 34,420 4.1% 1413 3.2% 1175

4th Dam: Ohiana Mom Handmaid-Red-ET (EX-91 DOM)

3-05 365d 34,230 3.7% 1272 3.3% 1117

Next 3 Dams: EX, EX-92, EX-94-4E

- Management traits
- From the same family as Jordan-Red
- Production and components

ABC Genetics

Worldwide

Jean-Louis Schrago

Ch-1299 Crans

Switzerland

Mobile: +41 79 200 48 14

Fax: +41 22 361 06 50

Email: abc.gen-schrago@bluewin.ch

www.abcgenetics.com



HYBRID P-RED

Born: 1/21/09 • USA 65632193



YOUNG
SIRE

138HO4455

3rd Dam



Ohiana Mom Handmaid-Red-ET
(EX-91 DOM)

JA-BOB HYBRID P-RED-ET

LYPOLL P X STADEL X PHIDEAUX X MOMENTUM

S: Hickorymea Lypoll P-Red

D: Ja-Bob Stadel Holly-Red-ET (EX-90 EX-MS)

4-01 365d 33,440 4.2% 1416 3.6% 1190

MGS: Stadel-Red

2nd Dam: Ja-Bob Phideau Hanna-Red-ET (EX-90 EX-MS DOM)

3-10 365d 34,420 4.1% 1413 3.2% 1175

3rd Dam: Ohiana Mom Handmaid-Red-ET (EX-91 DOM)

3-05 365d 34,230 3.7% 1272 3.3% 1117

Next 3 Dams: EX, EX-92, EX-94-4E

- POLLED from the Helens
- Grandam a full sister to Jordan-Red
- Outcross genetics!

ABC Genetics

Worldwide
Jean-Louis Schrago
Ch-1299 Crans
Switzerland

Mobile: +41 79 200 48 14

Fax: +41 22 361 06 50

Email: abc.gen-schrago@bluewin.ch

www.abcgenetics.com



ITALIA-RED

Born: 12/4/07 • USA 62996098 • aAa 234 • DMS 234



**YOUNG
SIRE**

138HO4190

Dam



**Ri-Val-Re Shottle Sarah-ET-RC
(VG-86)**

GOLD-N-OAKS ITALIA-RED-ET (VG-85)

ELAYO X SHOTTLE X ALAMO X RANGER X FACTOR

S: Alpar Stadel Elayo-Red-ET

D: Ri-Val-Re Shottle Sarah-ET-RC (VG-86)

2-02 305d 23,270 4.4% 1020 3.2% 728

MGS: Picston Shottle-ET (EX-96 GM)

2nd Dam: Ri-Val-Re Alamo Salsa-Red (EX-90 DOM)

4-01 365d 36,880 4.1% 1530 3.1% 1130

3rd Dam: Ri-Val-Re Range Redwing-Red (VG-88 DOM)

6-10 365d 36,690 3.8% 1358 3.1% 1088

- Early Elayo son
- From a VG-86 Shottle dam
- Traces back to Allimar Misty Calico-Red (EX-90 DOM)
- Outcross bloodlines

ABC Genetics

**Worldwide
Jean-Louis Schrago
Ch-1299 Crans
Switzerland**

Mobile: +41 79 200 48 14

Fax: +41 22 361 06 50

Email: abc.gen-schrago@bluewin.ch

www.abcgenetics.com





JAVA-RED

Born: 1/27/11 • USA 141122193 • aAa 321456



76HO663

Dam



Ms Del-Hollow Jose-Red-ET
(EX-92)

ERNEST-ANTHONY JAVA-RED-ET

SECURE X REDMAN X RUDOLPH X INSPIRATION

S: Crackholm Secure-Red (VG-88)

D: Ms Del-Hollow Jose-Red-ET (EX-92)

4-03 365d 36,460 4.2% 1537 3.3% 1192

MGS: Valleyriver Rubn Redman-Red-ET (EX)

2nd Dam: Fradon Rudolph Jodie-ET-RC (EX-2E 10*)

4-03 365d 33,237 4.5% 1479 3.2% 1069cp

Life: 132,951 3.9% 5247 3.2% 4306cp

3rd Dam: Bridon Inspira Jodie-Red (EX 4*)

5-06 304d 19,381 4.2% 816 3.5% 672cp

4th Dam: Bridon Threat Janice (VG-86)

- Great components
- Balanced breeding at its best
- World famous Jodie family!



Taurus Service Inc.

P.O. Box 164

Mehoopany, PA 18629

Phone: 570-833-5123 • 570-833-5513

Fax: 570-833-2690

www.taurus-service.com

Email: taurus@epix.net

TOLL FREE U.S. ORDERS: 800-836-5123

JIGSAW-RED

Born: 6/15/09 • CAN 10822056 • aAa 324156

Dam



YOUNG
SIRE

80HO329



Fradon SS Jordee-Red-ET (VG-88 EX-91-MS)
Nom. All-American R&W Sr. 3-Yr-Old 2009

FRADON JIGSAW-RED-ET (VG-85)

DEBONAIR X SEPTEMBER STORM X RUDOLPH X INSPIRATION

S: Scientific Debonair-Red-ETS (EX-90)

D: Fradon SS Jordee-Red-ET (VG-88 EX-91-MS)

3-08 365d 34,989 4.0% 1384 3.1% 1069cp

MGS: Pursuit September Storm-ET-RC (EX)

2nd Dam: Fradon Rudolph Jodie-ET-RC (EX-2E 10*)

4-03 365d 33,237 4.5% 1479 3.2% 1069cp

Life: 132,951 3.9% 5247 3.2% 4306cp

3rd Dam: Bridon Inspira Jodie-Red (EX 4*)

5-06 304d 19,381 4.2% 816 3.5% 672cp

4th Dam: Bridon Threat Janice (VG-86)

- A Debonair from the Jodies!
- Dam is maternal sister to Redliner
- Show-winning style!



P.O. Box 164, Mehoopany, PA 18629

Phone: 570-833-5123 or 5513

Fax: 570-833-2690

www.taurus-service.com

Email: taurus@epix.net

Toll Free U.S: 800-836-5123

Browndale
Specialty Sires

RR 2

Paris, ON N3L 3E2

Canada

Phone: 519-442-2918 or 519-732-3339

Fax: 519-442-2921

Email: browndalesires@gmail.com

JORCK-RED

Born: 4/5/11 • NLD 724673634



202HO824

3rd Dam



Huijben Pietje 514-Red
(VG-87)

JORCK-RED

JOTAN X MR BURNS X TALENT X TULIP X JABOT

S: Jotan-Red

D: Huijben Pietje Burns-RC

MGS: Dudoc Mr Burns-ET-RC (VG-85)

2nd Dam: Huijben Pietje 522-RC (VG-86)

1st lac. 305d 23,490 4.6% 1080 4.0% 935

3rd Dam: Huijben Pietje 514-Red (VG-87)

4th Dam: Almere Pietje 513-RC (VG-85)

5th Dam: Almere Pietje 502-Red (EX-94)

- High GTPI sire
- Early son of Jotan-Red
- Exceptional type sire
- Good level of milk and positive components
- Successful cow family
- Former registered as HUIJBEN RED PIELLEKE
- Available in the U.S. from Accelerated Genetics



Masterrind
Osterkrug 20
27283 Verden
Germany

Email: semenexport@masterrind.com
www.masterrind.com



KINDMAN-RED

Born: 7/8/10 • USA 69314924 • aAa 315246 • DMS 345,234



54HO582

SPRUCE-HAVEN KINDMAN-RED-ET

BELMONDO X REDWOOD X GOLDWYN X GARTER X RUDOLPH

S: La Presentation Belmondo-Red-ET (VG-85)

D: Potters-Field RW K9450-ET-RC (GP-83)

2-02 365d 27,824 3.2% 881 2.9% 800

MGS: Heatherstone-V Redwood-ET-RC

2nd Dam: Potters-Field G Kari 37-ET (VG-85)

2-01 305d 16,740 3.8% 644 3.0% 506

3rd Dam: J-T-Willow Karina-ET (VG-88 GMD DOM)

4th Dam: SFL Lindy Karat-ET (VG-88 GMD DOM)

5th Dam: SFL Holiday Karat (VG-88 GMD DOM)

- Outcross pedigree of Belmondo x Redwood x Goldwyn
- Balanced genomics across the board
- Strength in genomics and strong himself
- Use to lower your inbreeding and improve your herd genetics at the same time
- Excellent management traits



International Protein Sires

PO Box 157

Rock Springs, WI 53961

Phone: 800-542-7593

Fax: 608-524-6935

Email: sires@ourhelp.net

www.ipssires.com

LADD P-RED

Born: 5/18/10 • USA 69405976 • aAa 423 • DMS 246



7HO11163

Dam



Tiger-Lily LawnBoy LuLu P-Red
(VG-87)

TIGER-LILY LADD P-RED-ET

DESTRY X LAWN BOY P X SEPTEMBER STORM X AMEL

S: Scientific Destry-ET-RC (VG-88)

D: Tiger-Lily LawnBoy LuLu P-Red (VG-87)

2-01 365d 24,750 4.4% 1084 3.5% 857

MGS: Aggravation Lawn Boy P-Red (EX-93 GM)

2nd Dam: Kings-Ransom Sept Lima-ET-RC (EX-91-2E EX-MS)

5-01 365d 39,260 4.8% 1893 3.2% 1242

3rd Dam: Kings-Ransom Amel Lemon (EX-93-2E EX-MS GMD DOM)

3-03 365d 38,470 4.0% 1534 3.0% 1159

Next 2 Dams: VG-85 GMD, VG-88 EX-MS

- Elite GTPI mating sire
- Outstanding components
- POLLED and RED with elite type



Select Sires, Inc.
11740 US 42 North
Plain City, OH 43064
Phone: 614-873-4683
Fax: 614-873-5751

Email: info-line@selectsires.com
www.selectsires.com

LEADER P-RED

Born: 4/3/10 • USA 69921953 • aAa 234



138HO4765

2nd Dam



Northwind Prdx Laura-Red-ET
(VG-88)

NORTHWIND-KC LEADER P-RED-ET

MITEY P X FOX X PARADOX X WEBSTER X AEROSTAR

S: B-Hiddenhills Mar Marmax-ET-RC

D: Northwind-KC F Layla-Red-ET (GP-82-2Y)

MGS: Chasin-Rainbows Fox-Red-ET

D: Northwind Prdx Laura-Red-ET (VG-88 EX-MS)

2-01 365d 29,133 4.6% 1340 3.0% 817

3-08 365d 40,518 4.3% 1779 2.9% 1217

2nd Dam: Northwind Webster Lona-ET-RC (VG-88)

4-00 365d 39,430 4.4% 1743 3.0% 1196

3rd Dam: Viland Aero Lisa-RC (EX-91-2E EEEEE)

7-05 305d 27,000 4.0% 1085 2.9% 774

Lifetime: 174,413 4.1% 7130 3.1% 5326

- POLLED, POLLED, POLLED
- Early Mitey P son (Goldwyn x September Storm)
- Same family as Logan-Red

ABC Genetics

Worldwide
Jean-Louis Schrago
Ch-1299 Crans
Switzerland

Mobile: +41 79 200 48 14

Fax: +41 22 361 06 50

Email: abc.gen-schrago@bluewin.ch

www.abcgenetics.com





LEGEND-RED

Born: 3/4/10 • USA 66858708

Dam



100HO11295

2nd Dam



Whittier-Farms Lava-Red-ET (EX-92)
Res. Grand Champion R&W Royal Winter Fair 2011

Dyks Kite Linda-Red
(EX-94-2E)

LAVAS LEGEND-RED-ET

SHAQUILLE X TALENT X KITE X RUBENS X BROKER

S: Deslacs Shaquille-ET-RC

D: Whittier-Farms Lava-Red-ET (EX-92)

2-11 226d 17,490 3.6% 624 3.0% 516

MGS: Ladino Park Talent-IMP-ET-RC (EX)

2nd Dam: Dyks Kite Linda-Red-ET (EX-94-2E)

4-01 365d 36,990 4.2% 1562 3.3% 1230

3rd Dam: Double-G Rubens Lindsay-RC (EX-93-3E EX-MS)

9-09 365d 31,240 4.5% 1415 3.1% 954

Next 3 Dams: GP-83-3Y, VG-86, VG-86

- Exciting show type!
- Dam was Reserve Grand Champion of the 2011 Royal Winter Fair
- 2nd Dam is 2x All-American Red & White Dyks Kite Linda-Red



Exel's
HOLSTEINS
& JERSEYS

www.exelsholsteins.com

Exels Holsteins
20002 N. Thornton Rd.
Lodi, CA 95242
Phone: 209-334-3292
Fax: 209-368-0898

Airosa Dairy
PO Box 1087
Tipton, CA 93272
Cell: 559-967-5258
Ph/F: 559-757-3598



Email: apanamajoe@aol.com

LOVELY MAN-RC

Born: 4/4/10 • USA 68757314 • aAa 135 • DMS 234

Dam



Sandy-Loam Lovely-Red-ET (VG-87 EX-MS)
3-11 364d 40,790 3.7% 1099 2.7% 1105



7HO11107

Dam



Ms Lava-Red-ET
(EX-91-2E EX-MS GMD DOM)

SANDY-LOAM M-O-M LOVELY MAN-RC (VG-85)

MAN O MAN X TALENT X MARMAX X CELSIUS X VALIANT

S: Long-Langs Oman Oman-ET (VG-85 GM)

D: Sandy-Loam Lovely-Red-ET (VG-87 EX-MS)

3-11 364d 40,790 3.7% 1099 2.7% 1105

MGS: Ladino Park Talent-IMP-ET-RC (EX)

2nd Dam: Ms Lava-Red-ET (EX-91-2E EX-MS GMD DOM)

6-09 365d 42,820 2.6% 1132 2.8% 1179

3rd Dam: Miss Celcius Lorena-RC (EX-92-3E GMD DOM)

5-00 3x 365d 40,470 4.5% 1825 3.2% 1276

Next 4 Dams: VG-89 GMD, EX-92 GMD DOM, EX-94-4E GMD DOM,
EX-91-3E DOM

- Exciting Red Carrier pedigree with generations of 40,000M dams
- Unique sire stack for Red - Man O Man x Talent x Marmax
- Bred to sire big-time production with outstanding udders and feet & legs



Select Sires, Inc.
11740 US 42 North
Plain City, OH 43064
Phone: 614-873-4683
Fax: 614-873-5751

Email: info-line@selectsires.com
www.selectsires.com

LUDO-RED

Born: 7/14/07 • USA 138482987 • aAa 516 • DMS 561,126
Dam



YOUNG
SIRE

138HO4140

Miss Louisiana-Red-ET (EX-90)
5-05 305d 38,948 4.0% 1563 3.2% 1257



EVER-GREEN-VIEW LUDO-RED-TW

CANVAS X MARMAX X CELCIUS X LEADER X VALIANT

S: Delta Canvas-RC

D: Ms Louisiana-Red-ET (EX-90)

5-05 305d 38,948 4.0% 1563 3.2% 1257

MGS: B-Hiddenhills Mar Marmax-ET-RC

2nd Dam: Miss Celcius Lorena-RC (EX-92-3E GMD DOM)

5-00 3x 365d 40,470 4.5% 1825 3.2% 1276

3rd Dam: Rothrock Leader Leial-ET-RC (VG-89 GMD)

3-11 3x 326d 32,840 4.2% 1382 3.0% 997

4th Dam: Walkup Valiant Lou Ella (EX-92 GMD DOM)

5th Dam: Walkup Astronaut Lou Ann (EX-94-4E GMD DOM)

- Leadman family on both sides of pedigree
- High milk with type to go with
- Rare 516 aAa

ABC Genetics

Worldwide
Jean-Louis Schrago
Ch-1299 Crans
Switzerland

Mobile: +41 79 200 48 14

Fax: +41 22 361 06 50

Email: abc.gen-schrago@bluewin.ch

www.abcgenetics.com



LUGANO-RED

Born: 5/31/10 • CAN 10980423 • aAa 234



YOUNG
SIRE

250HO1019

Dam



Comestar Lausintina Salto-Red-ET
(VG-87-2Y)

BRANDSHAVEN LUGANO-RED-ET

STERLING X SALTO X TALENT X CONVINCER X ASTRE

S: Ardross Sterling-ET-RC

D: Comestar Lausintina Salto-Red-ET (VG-87-2Y)

2-05 365d 26,845 4.3% 1162 3.5% 930

MGS: Gen-I-Beq Salto-ET-RC (EX)

2nd Dam: Comestar Lausintia Talent-ET-RC (VG-88 5*)

4-06 365d 37,564 3.9% 1455 2.9% 1102

3rd Dam: Comestar Lausindra Convincer-ET (VG-86-2Y 12*)

4th Dam: Comestar Lausian Astre (VG-85-3Y 15*)

5th Dam: Comestar Lausan Black-ET (VG-87 23*)

6th Dam: Comestar Laurie Sheik-ET (VG-88 23*)

7th Dam: Elysa Anthony Lea (EX 15*)

- Sterling son from the Laurie Sheik family!
- Different sire stack for Red & White
- Lots of milk, components & type - All in ONE package!
- Available in U.S. from Accelerated Genetics



GenerVations

PO Box 568

Campbellville, Ontario L0P 1B0 Canada

Toll Free: 800-244-5744

Phone: 905-873-8700

Fax: 905-877-1394

Email: info@generations.com

www.generations.com

Accelerated Genetics®



Accelerated Genetics

Phone: 800-451-9275

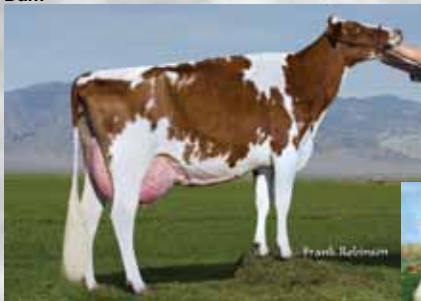
Email: info@accelgen.com

www.accelgen.com

MAGENTA-RED

Born: 5/27/11 • USA 141304939

Dam



7HO11754

2nd Dam



Ms Eskdale Doozy-Red-ET (VG-88)
2-00 365d 29,790 4.0% 1202 3.5% 1032

Dyks Advent Lucy-Red-ET
(EX-91 EX-MS)

ESKDALE MAGENTA-RED-ET

DURABLE X MR BURNS X ADVENT X RUBENS X BROKER

S: Ronelee SS Durable-RC (EX-90 GM)

D: Ms Eskdale Doozy-Red-ET (VG-88)

2-00 365d 29,790 4.0% 1202 3.5% 1032

MGS: Dudoc Mr Burns-ET-RC (VG-85)

2nd Dam: Dyks Advent Lucy-Red-ET (EX-91 EX-MS)

3-09 334d 28,530 3.7% 1056 3.3% 939

3rd Dam: Double-G Rubens Lindsay-RC (EX-93-3E EX-MS)

9-09 365d 31,240 4.5% 1415 3.1% 954

Next 3 Dams: GP-83-3Y, VG-86, VG-86

- Leading Red & White GTPI bull in the breed
- Proven type cow family with great offspring around the world
- Huge cheese market bull in this international sire father



Select Sires, Inc.
11740 US 42 North
Plain City, OH 43064
Phone: 614-873-4683
Fax: 614-873-5751

Email: info-line@selectsires.com
www.selectsires.com

MAGUA-PP-RC

Born: 10/6/08 • CZE 580391053



YOUNG
SIRE

506HO252

Dam



Ostretin Mia 2-ET
(VG-85)

OSTRETIN MAGUA-PP-RC

LAWN BOY P X OTTAWA X MORTY X MANFRED X PATRON

S: Aggravation Lawn Boy P-Red (EX-93 GM)

D: Ostretin Mia 4 P (VG-86)

MGS: Hickorymea Ottawa-P-ET-RC

2nd Dam: Ostretin Mia 2-ET (VG-85)

3rd Dam: Brandt-View Manfred Miss (VG-88)

4th Dam: Da-Net Patron Pansy (VG-87)

- All offspring will be 100% POLLED!
- One of the highest homozygous polled bulls in the breed!
- From the well known cow family at Brandt-View
- Great production and type
- Used as sire of sons



Sierra Desert Breeders Inc.

Sierra Desert Breeders Inc.

32200 Road 132

Visalia, CA 93292

Phone: 559-730-6629

Email: 506bulls@gmail.com

www.sierradesertbreeders.com



MOZYGUS-PP-RED

Born: 3/18/11 • USA 840003008328814 1 • aAa 243 • DMS 234

Dam



7HO11608

Southland Lawn B Massia9-RC (VG-86)
2-03 365d 21,459 3.6% 781 3.5% 761

S-S-I SL MOZYGUS-PP-RED-ET

MITEY P X LAWN BOY P X TALENT

S: West Port Arron Doon Mitey P-RC

D: Southland Lawn B Massia9-RC (VG-86 VG-87-MS)

2-03 365d 21,459 3.6% 781 3.5% 761

MGS: Aggravation Lawn Boy P-Red (EX-93 GM)

2nd Dam: Maria-Red (VG-89 VG-89-MS)

2-01 365d 23,365 3.9% 928 3.5% 832

3rd Dam: Apina Massia 20 (VG-89 VG-89-MS)

- Very unique HOMOZYGOUS POLLED bull - 100% no horns!
- Outstanding cow family in famous Southland herd in Holland
- Calving ease, Red, type on top of being POLLED



Select Sires, Inc.
 11740 US 42 North
 Plain City, OH 43064
 Phone: 614-873-4683
 Fax: 614-873-5751
 Email: info-line@selectsires.com
www.selectsires.com

PARMA PP-RED

Born: 9/22/10 • DEU 353649969 • aAa 324156



YOUNG
SIRE

Dam



Golden-Oaks Perk Rae-P-Red-ET
(EX-90)

GOLDEN-OAKS PARMA-PP-RED-ET

REDMAN X PERK X RUBENS X JUBILANT X TONY

S: West Port Arron Doon Mitey P-RC

D: Golden-Oaks Perk Rae-P-Red-ET (EX-90)

1-11 365d 31,033 3.7% 1161 3.2% 983

MGS: Burket-Falls Perk-P-Red-ET

2nd Dam: Scientific Beauty Rae-ET-RC (EX-90)

4-03 365d 33,710 4.7% 1595 3.5% 1179

3rd Dam: Scientific Jubilant Rae-ET (EX-90 DOM)

4th Dam: C Hanoverhill Tony Rae (EX-96-3E GMD DOM)

5th Dam: C Hanover-Hill TT Roxette (EX-94-2E GMD)

6th Dam: Mil-R-Mor Roxette (EX GMD)

7th Dam: C Glenridge Citation Roxy (EX-97-4E GMD) Queen of Breed

- Homozygous POLLED!
- 8 generations of EX dams
- Traces back to the Queen of the Breed ROXY EX-97-4E GMD
- Promising excellent udders
- Very good components
- Good udder health



German Genetics International

Ag-Link International, Inc.

78 Baker Road

Tunkhannock, PA 18657

Phone: 570-836-6593

Email: aglinks@aol.com

www.ag-link.com





PROXY PP-RED

Born: 6/10/10 • CAN 11085175 • aAa 132546

Dam



Golden-Oaks Peach-P-ET-RC (VG-85-2Y)



106HO2754

2nd Dam



Golden-Oaks Perk Rae-P-Red-ET (EX-90)

VENTURE PROXY PP-RED-ET

MITEY X DURHAM X PERK X RUBENS X JUBILANT X TONY

S: West Port Arron Doon Mitey P-RC

D: Golden-Oaks Peach-P-ET-RC (VG-85-2Y)

2-02 365d 27,842 3.9% 1074 3.6% 999cp

MGS: Regancrest Elton Durham-ET (EX-90 GM)

2nd Dam: Golden-Oaks Perk Rae-P-Red-ET (EX-90)

1-11 365d 31,033 3.7% 1161 3.2% 983

3rd Dam: Scientific Beauty Rae-ET-RC (EX-90)

4-03 365d 33,710 4.7% 1595 3.5% 1179

4th Dam: Scientific Jubilant Rae-ET (EX-90 DOM)

5th Dam: C Hanoverhill Tony Rae (EX-96-3E GMD DOM)

6th Dam: C Hanover-Hill TT Roxette (EX-94-2E GMD)

7th Dam: Mil-R-Mor Roxette (EX GMD)

8th Dam: C Glenridge Citation Roxy (EX-97-4E GMD) Queen of Breed

- HOMOZYGOUS POLLED!!!
- All calves will be POLLED!
- No Lawn Boy
- From the ROXY family

DairyBullsOnline.com



Phone: 855-222-2013
Email: info@dairybullsonline.com
www.dairybullsonline.com



RAINY-RC

Born: 12/12/09 • CAN 10935962 • aAa 312546 • DMS 126,561

Dam



YOUNG
SIRE

54HO553

Rainyridge Talent Barbara-RC (EX-95)

1st 5-Yr-Old World Dairy Expo & Royal Winter Fair 2010



RAINYRIDGE BARNIE-ET-RC

SHAQUILLE X TALENT X OUTSIDE X MILAN X TONY X TEMPO

S: Gen-Mark Stmatic Sanchez (EX-94)

D: Rainyridge Talent Barbara-RC (EX-95)

1st 5-Yr-Old World Dairy Expo 2010 & Royal Winter Fair 2010

3-04 365d 34,465 3.6% 1257 3.3% 1133

MGS: Ladino Park Talent-IMP-ET-RC (EX)

2nd Dam: RF Outside Breeze-ET (EX-93)

4-02 334d 31,920 4.7% 1488 3.5% 1113

3rd Dam: Raverley Briana Milan-ET (EX-2E 4*)

4th Dam: Rainyridge Tony Beauty (EX-5E 9*)

World Dairy Expo Grand Champion 1999

5th Dam: Despics Tempo Diane (VG-85)

- A pedigree filled with famous show cows!
- Breed leading type
- From the heart of Rainyridge breeding
- Calves are long, tall and stylish!
- Qualifies for worldwide use



International Protein Sires

PO Box 157

Rock Springs, WI 53961

Phone: 800-542-7593

Fax: 608-524-6935

Email: sires@ourhelp.net

www.ipssires.com

READY-RED

Born: 7/7/10 • USA 69473802 • aAa 2136



525HO102

Dam



Greenlea Rub Marlene-Red-ET
(EX-94-3E EX-MS)

GREENLEA READY-RED

REDLINER X RUBENS X RED-MARKER X MILESTONE X JUBILANT

S: Fradon Redliner-Red (EX-91)

D: Greenlea Rub Marlene-Red-ET (EX-94-3E EEEEE)

3-07 365d 35,390 4.0% 1410 3.1% 1108

Lifetime: 137,870 3.6% 5008 3.2% 4354

MGS: STBVQ Rubens-ET-RC

2nd Dam: Bar-Lee Marker Mandy-Red-ET (EX-94-3E EEEEE)

Lifetime: 128,689 4.0% 5183 3.2% 4136

3rd Dam: Bar-Lee MS Marcy-Red (EX-92)

4th Dam: Filiale Jubilant Mali-Red (EX-91)

Next 2 Dams: VG-86 4*, VG-85 8*

- Redliner son from world-famous Marlene!
- Backed by 4 generations of EX All-Americans!
- Ready-Red calves are already on the ground



The bulls that were bred to be cows

Triple-Hil Sires
22046 Old Forge Road
Smithsburg, MD 21783
Lowell Martin: 301-491-3154
Jared Martin: 301-491-4645
Email: Triplehilsires@emypeople.net



REALTIME-RED

Born: 3/22/10 • USA 69248935 • aAa 234156 • DMS 123,135

Dam



54HO559



Hol-Star Talent Teary A-ET-RC (EX-90)
2-03 363d 24,050 3.5% 847 3.6% 865

HOL-STAR LK REALTIME-RED-ET

LION KING X TALENT X DURHAM X FORMATION X EMORY X TESK

S: Ra-Mar-Land Lion King-RC (EX-90)

D: Hol-Star Talent Teary-ET-RC (EX-90)

2-03 363d 24,050 3.5% 847 3.6% 865

MGS: Ladino Park Talent-IMP-ET-RC (EX)

2nd Dam: Hol-Star Teary Durham (EX-90 DOM)

5-01 365d 42,310 4.0% 1712 3.2% 1368

Lifetime: 122,630 3.6% 4448 3.3% 4025

3rd Dam: Hol-Star Formation Teacup (VG-86)

4th Dam: Hol-Star Emory Tease (VG-87)

5th Dam: Hol-Star Tesk Jee (VG-88)

- From 5 generations of VG or EX dams
- Combination of elite genomics for GTPI, Milk, Type, UDC, FLC, Protein %, Protein lbs and PL attract lots of attention!
- Being used as a sire of sons
- No Rubens, Jordan or Advent in his pedigree
- Low inbreeding coefficient



International Protein Sires
PO Box 157
Rock Springs, WI 53961
Phone: 800-542-7593
Fax: 608-524-6935
Email: sires@ourhelp.net
www.ipssires.com

RED EMPIRE-RED

Born: 5/4/08 • CAN 105211816 • aAa 213465

Dam



**YOUNG
SIRE**

80HO327



Eastwest Cortland-Red (EX-90)
6-01 365d 29,848 4.0% 1188 3.2% 966cp

EASTWEST RED EMPIRE-RED-ET (VG-88-2Y)

REDLINER X STATE X INTENSIFIER X RUBENS X JUBILANT

S: Fradon Redliner-Red (EX-91)

D: Eastwest Cortland-Red (EX-90)

6-01 365d 29,848 4.0% 1188 3.2% 966cp

MGS: Dudoc State-ET-RC (EX-90)

2nd Dam: Northern-Glo MacIntosh-Red (VG-87 7*)

4-02 365d 40,873 4.4% 1812 3.2% 1303cp

Lifetime: 130,872 4.4% 5776 3.3% 4354cp

3rd Dam: Northern-Glo Ruben Macaroon-RC (VG-86)

4th Dam: Northern-Glo Macarena-Red (VG-85)

5th Dam: Northern-Glo Marcia-Red-ET (VG-87)

- Exciting young sire!
- High components
- Show type



P.O. Box 164, Mehoopany, PA 18629

Phone: 570-833-5123 or 5513

Fax: 570-833-2690

www.taurus-service.com

Email: taurus@epix.net

Toll Free U.S.: 800-836-5123



RR 2

Paris, ON N3L 3E2

Canada

Phone: 519-442-2918 or 519-732-3339

Fax: 519-442-2921

Email: browndalesires@gmail.com

REDSHOT-RED-BC

Born: 11/29/08 • CAN 9782021 • aAa 432



250HO956

Dam



Islehaven Gold Dancer-Red-BC
(VG-878)

STONEDEN REDSHOT-RED-BC

SHOTTLE X GOLDWYN X LEE X CHARLES X TREASURE

S: Picston Shottle-ET (EX-96 GM)

D: Islehaven Gold Dancer-Red-BC (VG-88)

Nominated All-World Red & White Cow 2012

2-02 365d 20,465 4.5% 922 3.3% 683cp

MGS: Braedale Goldwyn (Extra)

2nd Dam: MarkTwain Lee Diana (VG-85 2*)

3-06 365d 19,385 3.8% 730 3.0% 589cp

3rd Dam: MarkTwain Charles Dixie (EX-90)

Life: 157,069 4.1% 6385 3.1% 4934cp

4th Dam: MarkTwain Yolanda-Red (VG-86)

5th Dam: MarkTwain TT Yvonne (VG-86)

- World's only Red Shottle son?
- Carries variant Red gene (*BC)
- 50% of calves will be R&W, even from B&W cows
- Available in U.S. from Accelerated Genetics



Generations

PO Box 568

Campbellville, Ontario L0P 1B0 Canada

Toll Free: 800-244-5744

Phone: 905-873-8700

Fax: 905-877-1394

Email: info@generations.com

www.generations.com

Accelerated Genetics®



Accelerated Genetics

Phone: 800-451-9275

Email: info@accelgen.com

www.accelgen.com



RELIEF P-RC

Born: 5/22/11 • USA 69169920 • aAa 342516

Dam's Maternal Sister



Pine-Tree Leif Suzy-ET (VG-85)
USDA Elite Cow
Holstein Genomic Locator List



138HO4954

4th Dam



Wesswood-HC Rudy Missy-ET
(EX-92 GMD DOM)

PINE-TREE RELIEF P-RC

TOUBIB P X LEIF X SHOTTLE X RUDOLPH X ELTON X MANDINGO

S: Dudoc Toubib P-ET-RC (Toystory x Oswald P)

D: Pine-Tree Leif Sue-ET (GP-82-2Y)

MGS: Leif

2nd Dam: Pine-Tree Monica Suzy-ET (VG-87 DOM)

2-02 305d 29,360 3.8% 1120 3.0% 888

3rd Dam: Pine-Tree Missy Monica-ET (VG-85 GMD DOM)

4-11 365d 36,010 3.5% 1248 2.9% 1035

Lifetime: 132,320 3.6% 4827 3.1% 4057

4th Dam: Wesswood-HC Rudy Missy-ET (EX-92 GMD DOM)

5th Dam: Wesswood Elton Mimi (EX-90 GMD DOM)

6th Dam: Wesswood Mandingo Ivy (VG-87)

Next 2 Dams: VG-87 GMD DOM, VG-87 GMD DOM

- High GTPI and NM\$ RC outcross polled bull
- Hard to find RC with no Lawn Boy, Advent or Storm blood
- High demand as sire of sons and EU embryo interest
- Wesswood-HC Rudy Missy family
- Owned by Pine-Tree Dairy

DairyBullsOnline.com



Phone: 855-222-2013
Email: info@dairybullsonline.com
www.dairybullsonline.com



REMAKE-P-RED

Born: 11/15/09 • USA 140346280 • aAa 213645



**YOUNG
SIRE**

Dam



Hickorymea Mr Sam Tenille-P-RC
(EX-90 EX-MS)

HICKORYMEA REMAKE-P-RED-TW

REALITY X MR SAM X ACHIEVER X CLIFFHANGER X COMMOTION

S: Hurtgen-Vue Reality-Red (VG-88)

D: Hickorymea Mr Sam Tenille-P-RC (EX-90 EX-MS)

2-02 365d 28,410 3.9% 1101 3.0% 844

MGS: Regancrest-Mr Durham Sam-ET (GM)

2nd Dam: Hickorymea Trude-P-Red-ET (VG-88 VG-MS)

3-02 365d 27,910 3.8% 1072 2.9% 817

3rd Dam: Hickorymea Cli Tes P-Red-ET (VG-88 VG-MS)

2-03 365d 30,290 3.7% 1131 3.1% 933

4th Dam: Hickorymea Com Tessie-P (EX-90 GMD)

5th Dam: Hickorymea Aero Tena P-RC (VG-88 VG-MS)

Next 2 Dams: VG-86, VG-85 DOM

- POLLED!
- Very good feet & legs
- Excellent udders
- Good fitness traits
- Alternative pedigree



German Genetics International
Ag-Link International, Inc.
78 Baker Road
Tunkhannock, PA 18657
Phone: 570-836-6593
Email: aglinks@aol.com
www.ag-link.com





RUDOLPH-RED

Born: 11/26/10 • USA 141028426 • aAa 432 • DMS 345

Dam



Our-Favorite Shnazy Rae-ET-RC (VG-86)
2-02 357d 29,387 3.3% 974 3.2% 951



7HO11497

2nd Dam



Scientific Gold Dish Rae-ET-RC
(VG-88 EX-MS DOM)

KENMORE RUDOLPH-RED-ET

DURABLE X SHOTTLE X GOLDWYN X DURHAM X JUBILANT X TONY

S: Ronelee SS Durable-RC (EX-90 GM)

D: Our-Favorite Shnazy Rae-ET-RC (VG-86)

2-02 357d 29,387 3.3% 974 3.2% 951

MGS: Picston Shottle-ET (EX-96 GM)

2nd Dam: Scientific Gold Dish Rae-ET-RC (VG-88 EX-MS DOM)

2-05 365d 35,210 1427 3.4% 1187

3rd Dam: Scientific Debutante Rae-ET-RC (EX-92 EX-MS GMD DOM)

2-02 365d 32,930 4.4% 1440 3.2% 1070

4th Dam: Scientific Jubilant Rae-ET-RC (EX-90 DOM)

5-11 365d 38,880 4.1% 1608 3.4% 1329

5th Dam: C Hanoverhill Tony Rae (EX-96-3E GMD DOM)

6-11 365d 40,220 4.1% 1661 3.3% 1331

Next 5 Dams: EX-90 GMD DOM 30*, EX-97-4E GMD 6*, EX 6*, VG-85 5*

- Early elite GTPI Durable son from the Roxys
- Superior milk and elite type in RED
- Bred to produce great feet & legs and tremendous rear udders



Select Sires, Inc.
11740 US 42 North
Plain City, OH 43064
Phone: 614-873-4683
Fax: 614-873-5751

Email: info-line@selectsires.com
www.selectsires.com

SANDBANK-RC

Born: 2/13/10 • CAN 106535629 • aAa 216

Dam



YOUNG
SIRE

250HO990

Maternal Brother



Gen-I-Beq Goldwyn Secret-ET-RC (VG-87-2Y 2*)
2-00 365d 25,593 4.8% 1237 3.6% 917cp

Crackholm Secure-Red-ET
(VG-88-2Y)

ROCKYMOUNTAIN SANDBANK-ET-RC

STERLING X GOLDWYN X DURHAM X FORMATION X AEROSTAR

S: Ardress Sterling-ET-RC (Mr Burns x Shottle)

D: Gen-I-Beq Goldwyn Secret-ET-RC (VG-87-2Y 4*)

2-00 365d 25,593 4.8% 1237 3.6% 917cp

MGS: Braedale Goldwyn (Extra)

2nd Dam: Gen-I-Beq Durham Sherry-ET-RC (VG-87 7*)

5-02 365d 40,036 3.9% 1574 3.2% 1268cp

3rd Dam: Glen Drummond Splendor-ET-RC (VG-86-2Y 36*)

4-10 305d 25,926 4.2% 1098 3.2% 818cp

4th Dam: Glen Drummond Aero Flower-RC (VG-88 18*)

5th Dam: Glen Drummond Shower-ET (EX 13*)

Next 4 Dams: EX-2E 7*, VG-85 4*, VG, VG

- An early Sterling son
- Maternal brother to the popular Secure-Red
- Available in U.S. from Accelerated Genetics



GenerVations

PO Box 568

Campbellville, Ontario L0P 1B0 Canada

Toll Free: 800-244-5744

Phone: 905-873-8700

Fax: 905-877-1394

Email: info@generations.com

www.generations.com

Accelerated Genetics®



Accelerated Genetics

Phone: 800-451-9275

Email: info@accelgen.com

www.accelgen.com

SECURE-RED

Born: 9/3/08 • CAN 104505308 • aAa 432

Daughter



250HO950



Schopfired Secure Kalyana-Red
1st Spring Heifer Calf Swiss Expo R&W Show
Lausanne Switzerland 2012

CRACKHOLM SECURE-RED-ET (VG-88-2Y)

MR BURNS X GOLDWYN X DURHAM X FORMATION X AEROSTAR

S: Dudoc Mr Burns-ET-RC (VG-85)

D: Gen-I-Beq Goldwyn Secret-ET-RC (VG-87-2Y 4*)

2-00 365d 25,593 4.8% 1237 3.6% 917cp

MGS: Braedale Goldwyn (Extra)

2nd Dam: Gen-I-Beq Durham Sherry-ET-RC (VG-87 7*)

5-02 365d 40,036 3.9% 1574 3.2% 1268cp

3rd Dam: Glen Drummond Splendor-ET-RC (VG-86-2Y 36*)

4-10 305d 25,926 4.2% 1098 3.2% 818cp

4th Dam: Glen Drummond Aero Flower-RC (VG-88 18*)

5th Dam: Glen Drummond Shower-ET (EX 13*)

Next 4 Dams: EX-2E 7*, VG-85 4*, VG, VG

- Extremely popular worldwide!
- Siring show winners worldwide!
- Enhance your B&W herd with Secure!
- Available in U.S. from Accelerated Genetics



GenerVations
PO Box 568
Campbellville, Ontario L0P 1B0 Canada
Toll Free: 800-244-5744
Phone: 905-873-8700
Fax: 905-877-1394
Email: info@generations.com
www.generations.com



Accelerated Genetics
Phone: 800-451-9275
Email: info@accelgen.com
www.accelgen.com



SEVEN P-RED

Born: 6/13/09 • USA 66726490



138HO4660

Dam



Sandy-Valley-W B Crystal-ET-RC
(VG-86)

SANDY-VALLEY SEVEN P-RED-ET (VG-87)

LAWN BOY P X BOLTON X SEPTEMBER STORM

S: Aggravation Lawn Boy P-Red (EX-93 GM)

D: Sandy-Valley-W B Crystal-ET-RC (VG-86)

2-01 365d 36,350 1005 1133

MGS: Sandy-Valley Bolton-ET (EX-90 GM)

2nd Dam: Ralma S Storm CF Crimson-ET (VG-87)

2-06 312d 29,540 3.5% 1021 3.1% 928

3rd Dam: Ralma Christmas Fudge-ET (VG-88 GMD DOM)

4th Dam: Ralma Juror Faith (EX-91 GMD DOM)

5th Dam: Ralma Leadman Fashion (VG-89)

- RED, POLLED full brother to Colt P-Red
- Exciting young sire!
- The total package - type, production & management traits!

ABC Genetics

Worldwide
Jean-Louis Schrago
Ch-1299 Crans
Switzerland



Mobile: +41 79 200 48 14

Fax: +41 22 361 06 50

Email: abc.gen-schrago@bluewin.ch

www.abcgenetics.com

SHOTTLE-RED

Born: 11/21/07 • USA 65850609 • aAa 315 • DMS 234,123



**YOUNG
SIRE**

138HO4160

Dam



**Ri-Val-Re Shtle Julianna-ET-RC
(VG-87 DOM)**

RI-VAL-RE SHOTTLE-RED-ET

PAUL P X SHOTTLE X MARMAX X AIRLINER X PATRON

S: Hickorymea Paul P-Red-ET (VG-85) Talent x Airliner

D: Ri-Val-Re Shtle Julianna-ET-RC (VG-87 DOM)

2-01 365d 31,220 4.2% 1296 3.1% 965

MGS: Picston Shottle-ET (EX-96 GM)

2nd Dam: Ms Ri-Val-Re Max Selsy-ET (VG-87)

5-03 325d 25,346 3.5% 1359 2.9% 743

3rd Dam: Hesters RL Patron Lucy-ET (VG-86)

2-10 365d 36,690 3.8% 1358 3.0% 1088

4th Dam: SFL Aerostar S Lett-ET (VG-87)

5th Dam: SFL Enhancer Scarlette-Red (VG-89 GMD DOM)

Next 2 Dams: EX-94-3E GMD DOM Fagn Scarlet, EX-95-3E Scarlet

- Rare Sire Stack - Shottle, Talent, Marmax, Airliner and Patron
- High milk production
- High fat

ABC Genetics

Worldwide
Jean-Louis Schrago
Ch-1299 Crans
Switzerland

Mobile: +41 79 200 48 14

Fax: +41 22 361 06 50

Email: abc.gen-schrago@bluewin.ch

www.abcgeneitics.com



SNOW RF-RC

Born: 2/28/11 • NLD 546483691 • aAa 243165



YOUNG
SIRE

202HO808

Dam



Poppe Pietje 519-Red

SNOW RF-RC

SNOWMAN X SPENCER X ROUMARE X FABER X TULIP

S: Flevo Genetics Snowman

D: Poppe Pietje 519-Red

1st lac. 284d 23,638 4.3% 1021 3.8% 904

MGS: Heihoeve Delta Spencer

2nd Dam: Ven Dairy Pietje-RC (VG-86)

1st lac. 305d 19,209 3.7% 710 3.4% 659

3rd Dam: Apina Pietje 515-Red (VG-86)

4th Dam: Huijben Pietje 514-Red (VG-87)

5th Dam: Almere Pietje 513-RC (VG-85)

6th Dam: Almere Pietje 502-Red (EX-94)

- Early Red Carrier Snowman son
- Great overall type
- Global sire of sons
- Outstanding udders
- Popular cow family
- Former registered as POPPE SNOWSTORM
- Available in the U.S. from Accelerated Genetics



Masterrind
Osterkrug 20
27283 Verden
Germany

Email: semenexport@masterrind.com
www.masterrind.com

SPECIAL DUAL PP-RED

Born: 3/24/11 • USA 70504975

3rd Dam



YOUNG
SIRE

106HO2865

Sire



Derrwyn Special Missy-Red (EX-92-2E GMD DOM)

5-04 365d 36,320 4.8% 1756 3.1% 1117

Arron Doon West Port Magna P-RC

LIRR SPECIAL DUAL PP-RED-ET

MAGNA P X LAWN BOY P X SEPTEMBER STORM X RUBENS

S: Arron Doon West Port Magna P-RC

D: Ri-Val-Re Special-P-Red-ET

MGS: Aggravation Lawn Boy P-Red (EX-93 GM)

2nd Dam: Derrwyn Spec Secret-Red-ET (VG-86 VG-MS)

4-04 365d 34,980 4.5% 1578 3.2% 1111

3rd Dam: Derrwyn Special Missy-Red (EX-92-2E EEEEE GMD DOM)

5-04 365d 36,320 4.8% 1756 3.1% 1117

4th Dam: Derrwyn Miss Special-Red-ET (EX-94-2E EEEEE DOM)

5-02 365d 43,260 4.2% 1834 3.0% 1278

5th Dam: Derrwyn Factor Miata-Red (EX-94-2E EX-MS)

6th Dam: Derrwyn TT Mystic-RC (VG-86)

Next 3 Dams: EX-91-2E EX-MS, VG-88, VG-85

- HOMOZYGOUS POLLED!!!
- #1 GTPI, NM\$, milk & lbs. fat & protein Homozygous POLLED bull of the breed - April 2012
- Like his full brother, Special Effect P, he is owned by his breeder
- Make 100% of your calf crop POLLED without sacrifice!

DairyBullsOnline.com



Phone: 855-222-2013
Email: info@dairybullsonline.com
www.dairybullsonline.com



SPECIAL EFFECT P-RED

Born: 5/2/11 • USA 70504985

2nd Dam



Derrwyn Spec Secret-Red-ET (VG-86 VG-MS)
4-04 365d 34,980 4.5% 1578 3.2% 1111



106HO2864

3rd Dam



Derrwyn Special Missy-Red
(EX-92-2E GMD DOM)

LIRR SPECIAL EFFECT P-RED-ET

MAGNA P X LAWN BOY P X SEPTEMBER STORM X RUBENS

S: Arron Doon West Port Magna P-RC

D: Ri-Val-Re Special-P-Red-ET

MGS: Aggravation Lawn Boy P-Red (EX-93 GM)

2nd Dam: Derrwyn Spec Secret-Red-ET (VG-86 VG-MS)

4-04 365d 34,980 4.5% 1578 3.2% 1111

3rd Dam: Derrwyn Special Missy-Red (EX-92-2E EEEEE GMD DOM)

5-04 365d 36,320 4.8% 1756 3.1% 1117

4th Dam: Derrwyn Miss Special-Red-ET (EX-94-2E EEEEE DOM)

5-02 365d 43,260 4.2% 1834 3.0% 1278

5th Dam: Derrwyn Factor Miata-Red (EX-94-2E EX-MS)

6th Dam: Derrwyn TT Mystic-RC (VG-86)

Next 3 Dams: EX-91-2E EX-MS, VG-88, VG-85

- #1 GTPI and #1 NM\$ R&W bull of the breed - April 2012
- #1 GTPI and #1 NM\$ R&W POLLED bull of the breed - April 2012
- Health traits, Red, Polled in one package!
- High demand as sire of sons
- Derrwyn Miss Special-Red family

DairyBullsOnline.com



Phone: 855-222-2013
Email: info@dairybullsonline.com
www.dairybullsonline.com



TALENT-RED

Born: 1/17/08 • USA 65499452 • aAa 261 • DMS 456,246



138HO4185

Dam



Ri-Val-Re Shottle Sarah-ET-RC
(VG-86)

GOLD-N-OAKS SHOT TALENT-RED

DAGGER X SHOTTLE X ALAMO X RANGER X FACTOR

S: Hauve Talent Dagger-Red

D: Ri-Val-Re Shottle Sarah-ET-RC (VG-86)

2-02 305d 23,270 4.4% 1020 3.2% 728

MGS: Picston Shottle-ET (EX-96 GM)

2nd Dam: Ri-Val-Re Alamo Salsa-Red (EX-90 DOM)

4-01 365d 36,880 4.1% 1530 3.1% 1130

3rd Dam: Ri-Val-Re Range Redwing-Red (VG-88 DOM)

6-10 365d 36,690 3.8% 1358 3.1% 1088

- From a VG-86 Shottle dam
- Traces back to Allimar Misty Calico-Red (EX-90 DOM)
- Rare 261 aAa
- Solid Red color

ABC Genetics

Worldwide
Jean-Louis Schrago
Ch-1299 Crans
Switzerland

Mobile: +41 79 200 48 14

Fax: +41 22 361 06 50

Email: abc.gen-schrago@bluewin.ch

www.abcgenetics.com



TEXAS-RED

Born: 1/17/11 • CHE 120093571606 • aAa 234 • DMS 615

Dam



196WW19356

4th Dam



Smith-Oak AdvRed Tae 72-Red (VG-86-2Y)

1-11 365d 22,250 4.1% 911 3.1% 696

Ernest-Anthony SD Tobi-ET
(EX-96-3E)

TEXAS-RED-ET (GP-83)

DESTRY X ADVENT X RED-MARKER X RUDOLPH X STARDUST

S: Scientific Destry-ET-RC (VG-88)

D: Smith-Oak AdvRed Tae 72-Red (VG-86-2Y)

1-11 365d 22,250 4.1% 911 3.1% 696

MGS: KHW Kite Advent-Red-ET (EX-94)

2nd Dam: Hillmont RM Trish-ET-RC (VG-87)

3rd Dam: New-Vision RDH Tropicana-ET (VG-87 DOM)

4th Dam: Ernest-Anthony SD Tobi-ET (EX-96-3E)

5th Dam: C Alanvale Inspiration Tina (EX-95-2E GMD DOM)

6th Dam: Alanvale Puget Anetta (VG)

- Exceptional potential for type improvement
 - Early RED son of Destry (Goldwyn x Durham)
 - Goes back to Ernest Anthony SD Tobi-ET (EX-96-3E)
- All-Canadian & Res. All-American 5-Yr-Old 2001
1st 5-Yr-Old & Res. Grand Champion Royal Winter Fair 2001

WORLDWIDE



swissgenetics

Swissgenetics
Meielenfeldweg 12,
3052 Zollikofen, Switzerland

T +41 31 910 62 62
info@swissgenetics.ch
www.swissgenetics.com

TOPPOLL P-RED

Born: 9/12/10 • DEU 664091086 • aAa 324165

Dam



Amanda-Red (VG-86)

TOPPOLL P-RED

TOP X LAWN BOY P

S: Top-Red

D: Amanda-Red (VG-86)

305d 23,949 3.4% 810 3.1% 744

MGS: Aggravation Lawn Boy P-Red (EX-93 GM)

2nd Dam: Alwira (VG-85)

305d 24,999 3.8% 950 3.2% 796

- POLLED!
- Promises outstanding udders
- Very good feet & legs
- Good calving traits



German Genetics International
Ag-Link International, Inc.
78 Baker Road
Tunkhannock, PA 18657
Phone: 570-836-6593
Email: aglinks@aol.com
www.ag-link.com



PROVEN SIREs

Apples Absolute-Red-ET.....	62
Bovigen-SF Red Rock-Red-ET	84
Carmano-Red.....	64
Derrwyn Mazda-Red-ET	79
Ever-Green-View Leon-Red-ET	73
Ever-Green-View Zoro-Red-ET	92
Fradon Redliner-Red-ET	82
Gegania Duplex Sparrow-RC.....	88
Gen-I-Beq Selayo-Red.....	87
Golden-Oaks Rocco P-Red-ET	85
Hurtgenlea Carmello-Red-ET.....	65
Indies-View Ludovic-Red	77
Ja-Bob Jordan-Red-ET.....	70
Ja-Bob Mark-Red-ET	78
Jerudo-Red.....	69
Jotan-Red	71
Northwind Marmax Leonid-Red	75
Northwind Prdx Logan-Red-ET	76
Peachey Tundel-Red	90
Plattery Talent Leonard-Red.....	74
Red-Boy-Red.....	81
Rocher Canvas Krafty-Red-ET	72
Ronelee SS Durable-RC.....	67
Rosedale Accolade-Red-ET	63
Savard-Red-ET	86
Scientific AD Diploma-Red	66
Stelse O Man Monster-RC.....	80
Tableau-Red	89
Valleyriver Ruben Redman-Red-ET	83
Vande Advent Vincent-Red	91
Warrencrest Jack P-Red-ET.....	68

ABSOLUTE-RED

Born: 9/4/07 • USA 139358472 • aAa 135462

Daughter



76HO582



Tiger-Lily Absolut Cary-Red (VG-88)

APPLES ABSOLUTE-RED-ET*CV (EX-92)

TALENT X REGIMENT X DURHAM X PRELUDE X JUBILANT

S: Ladino Park Talent-IMP-ET-RC (EX)

D: KHW Regiment Apple-Red-ET (EX-94)

4-01 365d 35,750 4.7% 1682 3.5% 1247

MGS: Carrousel Regiment-Red-ET (VG-85)

2nd Dam: Kamps-Hollow Altitude-ET-RC (EX-95-2E DOM)

7-00 365d 39,690 4.7% 1849 3.3% 1310

3rd Dam: Clover-Mist Alisha-ET-RC (EX-93-3E DOM)

4th Dam: Clover-Mist Augy Star-ET-RC (EX-94-4E DOM)

5th Dam: D-R-A August (EX-96-4E DOM)

6th Dam: D-R-A Ideal Precious Leader (EX-90-2E)

7th Dam: D-R-A Princess Lad Leader (EX-90-3E)

- Fantastic components
- Show winning young cows and heifers
- World famous Apple son!



Taurus Service Inc.

P.O. Box 164

Mehoopany, PA 18629

Phone: 570-833-5123 • 570-833-5513

Fax: 570-833-2690

www.taurus-service.com

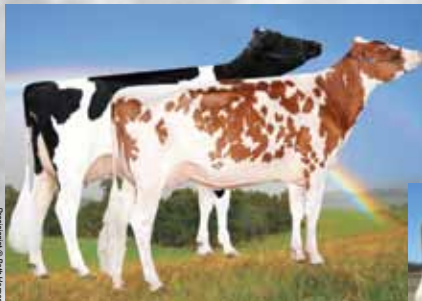
Email: taurus@epix.net

TOLL FREE U.S. ORDERS: 800-836-5123

ACCOLADE-RED

Born: 2/28/07 • USA 138225542 • aAa 234

Daughters



**PROVEN
SIRE**

7HO9774



Precisionist © Ben Hayes
Teresa © Nick Frecher

Rosedale Precisionist-RC (VG-86)
Wedgwood Accolade Teresa-Red (VG-86-2Y)
2nd Sr. 2-Yr-Old Quebec Spring Show 2012

ROSEDALE ACCOLADE-RED-ET (EX-95)

ADVENT X RUBENS X RUDOLPH X LEADER

S: KHW Kite Advent-Red-ET (EX-94)

D: Lavender Ruby Redrose-Red (EX-96-3E)

7-04 365d 52,100 4.9% 2576 3.4% 1751

Lifetime: 255,978 4.3% 10988 3.3% 8563

MGS: STBVQ Rubens-ET-RC (VG-88)

2nd Dam: Northrose-I Lavender-ET-RC (EX-90)

3-10 365d 28,734 3.6% 1034 3.2% 919

3rd Dam: Rosedale Lea-Ann-ET-RC (EX-93-2E GMD)

4th Dam: Stookey Elm Park Blackrose-ET (EX-96-3E GMD)

Next 3 Dams: EX-93 DOM, VG-87, VG-89

- Advent son of the **WORLD FAMOUS Redrose!**
- Redrose's show winnings:
 - 3x Unanimous All-American Red & White
 - Red & White Cow of the Year 2010
 - All-World Champion Red & White 2006 & 2007
 - Supreme Champion World Dairy Expo 2005
 - 2x Grand Champion Grand Int'l Red & White Show



Rosedale Genetics

3066 Cty G

Oxford, WI 53952

Phone/Fax: 608-584-5853

Mark Cell: 920-988-3070

Nicky Cell: 920-988-9570

Email: rosedale2@maqs.net

www.rosedalegenetics.com

CARMANO-RED

Born: 2/16/01 • DEU 578889436 • aAa 432516

Daughter



**PROVEN
SIRE**

204HO5011



SCH Zamara-Red
Junior Champion Austrian National Show
Dairy Grand Prix 2012

CARMANO-RED

CADON X LAY-OUT

S: Agriprize Cadimesa-Red-ET (EX-92)

D: Loreen (EX-90)

305d 29,460 3.9% 1155 3.3% 961

MGS: Lay-Out-Red

2nd Dam: Laspalmas (EX-90)

305d 27,715 3.9% 1085 3.6% 997

3rd Dam: Loretta (EX-91)

- One of the best transmitters of longevity
- Very good feet & legs
- Good udder health
- Sires show champions



German Genetics International
Ag-Link International, Inc.
78 Baker Road
Tunkhannock, PA 18657
Phone: 570-836-6593
Email: aglinks@aol.com
www.ag-link.com



CARMELLO-RED

Born: 8/23/06 • USA 138241391 • aAa 351 • DMS 561,135

Daughter



6HO1120



Manannah-Valley Diamond-Red
Nom. Jr. All-American Winter Heifer Calf 2009

HURTGENLEA CARMELLO-RED-ET

RAMPAGE X LAUREL X KITE X TRIPLE THREAT

S: Rosedale-L Rampage-Red-ET (VG-87)

D: Yursden Hrtgen Carabeth-Red (EX-90)

2-06 365d 31,996 4.2% 1347 3.2% 1057

MGS: Ja-Bob Laurel-Red-ET

2nd Dam: Yursden Kite Caramac-Red (EX-92 EEEEE)

4-02 365d 31,774 4.2% 1325 3.1% 979

2x All-American in milking form

Grand Champion, Int'l R&W Show '06

International Cow of the Year

3rd Dam: Yursden TT Candy-Red-TW (VG-87)

4th Dam: GP-82, next 5 Dams VG

- His grandam - Caramac: Grand Champion at Madison!
- Terrific type
- Deep pedigree

ABC Genetics

Worldwide
Jean-Louis Schrago
Ch-1299 Crans
Switzerland

Mobile: +41 79 200 48 14

Fax: +41 22 361 06 50

Email: abc.gen-schrago@bluewin.ch

www.abcgenetics.com



DIPLOMA-RED

Born: 3/18/07 • USA 138551041

Daughter



Diploma Beatrix-Red



SCIENTIFIC AD DIPLOMA-RED

ADVENT X ROY X DURHAM X JUBILANT X TONY

S: KHW Kite Advent-Red-ET (EX-94)

D: Scientific Roy Delicate-ET-RC (EX-91)

4-03 365d 38,640 4.5% 1741 3.5% 1320

MGS: Roylane Jordan-ET (EX-95 GM)

2nd Dam: Scientific Debutante Rae-ET-RC (EX-92 EX-MS GMD DOM)

2-02 365d 32,930 4.4% 1440 3.2% 1070

3rd Dam: Scientific Jubilant Rae-ET-RC (EX-90 DOM)

5-11 365d 38,880 4.1% 1608 3.4% 1329

4th Dam: C Hanoverhill Tony Rae (EX-96-3E GMD DOM)

6-11 365d 40,220 4.1% 1661 3.3% 1331

Next 5 Dams: EX-90 GMD DOM 30*, EX-97-4E GMD 6*, EX 6*, VG-85 5*

- 8 generations EX out of the Roxy EX-97-4E family
- Excellent udder health
- Perfect linear traits
- Outstanding udders
- High components



German Genetics International

Ag-Link International, Inc.

78 Baker Road

Tunkhannock, PA 18657

Phone: 570-836-6593

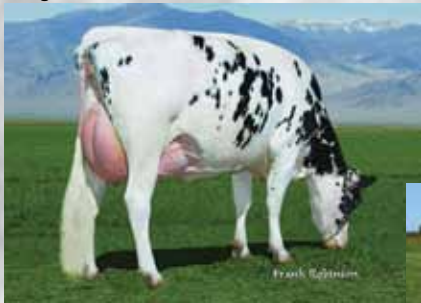
Email: aglinks@aol.com

www.ag-link.com



DURABLE-RC

Born: 7/12/05 • USA 136747211 • aAa 435612 • DMS 246,234W
Daughter



Trydale Durable 2793



7HO9107

Daughter



Green-Meadow Drble Brittani
(GP-82)

RONELEE SS DURABLE-RC (EX-90)

SEPTEMBER STORM X OUTSIDE X RUDOLPH X MARK

S: Pursuit September Storm-ET-RC (EX GM)

D: Ronelee Outside Dabble-ET (EX-91-2E EX-MS GMD DOM)

5-03 365d 44,530 3.6% 1612 2.9% 1313

MGS: Comestar Outside-ET (EX-95 GM)

2nd Dam: Ronelee Rudolph Dimple (EX-93-2E EX-MS DOM)

5-08 365d 45,920 3.7% 1713 2.9% 1341

3rd Dam: Select Mark Dolly (EX-95-4E EX-MS GMD DOM)

4th Dam: Select Southwind Dinah (EX-91)

Next 2 Dams: VG-86, VG-85

- The incredible Dapple family in RED
- RC breed leader for GTPI
- Sire of sons at Select Sires
- Health & management trait specialist
- Balanced cows with dairy strength
- Components are a strong suit



Select Sires, Inc.
11740 US 42 North
Plain City, OH 43064
Phone: 614-873-4683
Fax: 614-873-5751

Email: info-line@selectsires.com
www.selectsires.com

JACK P-RED

Born: 3/12/07 • USA 138240439 • aAa 234 • DMS 135,345



140HO2105

Dam



Hy-Class Jordan Jara-Red
(VG-87)

WARRENCREST JACK P-RED-ET

OTTAWA P X JORDAN X RANGER X JACOB NED X LOGIC X HARRY

S: Hickorymea Ottawa P-ET

D: Hy-Class Jordan Jara-Red (VG-87)

2-03 365d 27,040 4.8% 1288 3.2% 873

MGS: Ja-Bob Jordan-Red-ET (EX-90)

2nd Dam: Hy-Class Rang Jathne-Red-TW (EX-90)

5-00 305d 31,780 3.5% 1106 2.8% 880

3rd Dam: Hy-Class Jacob Jackie-Red (EX-91)

4th Dam: Jandi-Mac June Logic-Red-ET (EX-91)

- POLLED
- Rare Ottawa from the Helens
- Combines high production and fat
- Outcross bloodlines

ABC Genetics

Worldwide
Jean-Louis Schrago
Ch-1299 Crans
Switzerland

Mobile: +41 79 200 48 14

Fax: +41 22 361 06 50

Email: abc.gen-schrago@bluewin.ch

www.abcgenetics.com



JERUDO-RED

Born: 3/26/03 • DEU 113878473 • aAa 564123

Daughter



Zafira Jerudo-Red (VG-85)



624HO2393



JERUDO-RED (EX-91)

JEROM X RUDOLPH

S: Jerom-Red

D: Zuchttaube (VG-88)

305d 23,456 4.0% 946 3.7% 858

MGS: Startmore Rudolph-ET (EX GM)

2nd Dam: Nordwind (EX-90)

305d 23,500 5.0% 1184 3.5% 827

- # 1 proven Red sire for NM\$ & TPI - April 2012
- Outcross pedigree
- High components
- Cow family known for longevity
- Superior feet & legs



German Genetics International

Ag-Link International, Inc.

78 Baker Road

Tunkhannock, PA 18657

Phone: 570-836-6593

Email: aglinks@aol.com

www.ag-link.com



JORDAN-RED

Born: 4/16/97 • WW 116889/USA 17378279 • aAa 345 • DMS 345,234
Daughter



Jordan Irene-Red (EX-95 EX-98-MS-CH)
6x Udder Champion at 6 different shows in Europe



6HO817

Daughter



Rocher Jordan Snow-Red-ET
(EX-94-USA)

JA-BOB JORDAN-RED-ET (EX-90)

PHIDEAUX X MOMENTUM X CAVEMAN X MARK

S: Mercy Phideaux-ET-RC (VG-88)

D: Ohiana Mom Handmaid-ET (EX-91 DOM)

3-05 365d 34,230 3.7% 1272 3.3% 1117

MGS: Mr Hurl-Three Momentum-Red-ET (VG-86)

2nd Dam: Ja-Bob Holly Jo-Red (EX)

3rd Dam: Ja-Bob Mark Heavenly Joy (EX-92 DOM)

4th Dam: Sky-Hi Mars Helen-ET (EX-92-4E GMD DOM)

- 4 generations EX EX-MS dams from Helen Family
- High reliability
- High components
- Source of width and strength, adds slope to rump
- Excellent mate for Rubens and September Storm bloodlines

ABC Genetics

Worldwide
Jean-Louis Schrago
Ch-1299 Crans
Switzerland

Mobile: +41 79 200 48 14

Fax: +41 22 361 06 50

Email: abc.gen-schrago@bluewin.ch

www.abccgenetics.com



JOTAN-RED

Born: 7/24/04 • NLD 393714184 • aAa 324156

Daughter



Jotan Jenna-Red
4th Lactation



202HO290



JOTAN-RED

JORDAN X DURHAM X PRELUDE X JUBILANT

S: Ja-Bob Jordan-Red-ET (EX-90)

D: Kamps-Hollow Altitude-ET-RC (EX-95-2E DOM)

7-00 365d 39,690 4.7% 1849 3.3% 1310

MGS: Regancrest Elton Durham-ET (EX-90 GM)

2nd Dam: Clover-Mist Alisha-ET-RC (EX-93-3E DOM)

3rd Dam: Clover-Mist Augy Star-ET-RC (EX-94-4E DOM)

4th Dam: D-R-A August (EX-96-4E DOM)

5th Dam: D-R-A Ideal Precious Leader (EX-90-2E)

6th Dam: D-R-A Princess Lad Leader (EX-90-3E)

- Highest daughter proven Red Holstein sire (TPI)
- 6 generations of EX dams
- From outstanding Durham daughter
- Superb type & udders
- Co-sampled in 6 countries
- Maternal brother to KHW Kite Advent-Red-ET (EX-94)
- Available in the U.S. from Accelerated Genetics



Masterrind
Osterkrug 20
27283 Verden
Germany

Email: semenexport@masterrind.com
www.masterrind.com

KRAFTY-RED

Born: 6/25/06 • USA 62761960 • aAa 165 • DMS 135,561
Daughter



**PROVEN
SIRE**

6HO1112

Barben Krafty Donelle-Red (NC-CH)



ROCHER CANVAS KRAFTY-RED-ET

CANVAS X PERSIA X DUSTER X BENCHMARK X ENHANCER

S: Delta Canvas-RC

D: Solo-Brownking Per Kream-ET (GP-2Y)

2-06 365d 31,527 3.9% 1257 3.0% 955

MGS: Zee-Cal Persia-Red-ET

2nd Dam: Andora Duster Kylee-ET-RC (VG-87 GMD DOM)

4-01 365d 36,670 4.0% 1453 3.2% 1158

3rd Dam: Andora Benchmark Karalee-ET (VG-88 GMD DOM)

2-00 365d 25,830 4.7% 1226 3.3% 852

4th Dam: Stewart-Dell Enhancer Kamie (EX-90 GMD DOM)

5-10 365d 34,080 3.8% 1302 3.1% 1058

- # 1 Red & White sire for milk in US & Switzerland - April 2012
- Tremendous production pedigree
- Kappa-casein AB
- Rare bloodlines - Canvas, Duster, Benchmark

ABC Genetics

Worldwide
Jean-Louis Schrago
Ch-1299 Crans
Switzerland

Mobile: +41 79 200 48 14

Fax: +41 22 361 06 50

Email: abc.gen-schrago@bluewin.ch

www.abcgenetics.com



LEON-RED

Born: 10/4/06 • USA 137744024 • aAa 135 • DMS 135,345
Daughter



Pochon Leon Sidonie-Red (VG-85-CH)



6HO1116

Dam



Miss Celcius Lorena-RC
(EX-92-3E)

EVER-GREEN-VIEW LEON-RED-ET

COLE X CELSIUS X LEADER X VALIANT X ASTRONAUT

S: G-Toctin-SM Cole-ET-RC (EX-90)

D: Miss Celcius Lorena-RC (EX-92-3E GMD DOM)

5-00 3x 365d 40,470 4.5% 1825 3.2% 1276

MGS: 528 Etazon Celsius-ET

2nd Dam: Rothrock Leader Leial-ET-RC (VG-89 GMD)

3-11 3x 326d 32,840 4.2% 1382 3.0% 997

3rd Dam: Walkup Valiant Lou Ella (EX-92 GMD DOM)

4th Dam: Walkup Astronaut Lou Ann (EX-94-4E GMD DOM)

5th Dam: Willolyn Elevation Lou (EX-91-3E DOM)

- Tremendous production
- True outcross pedigree
- 4 generations of Gold Medal Dams
- 4 generations of Excellent Mammarys
- Same family as the great Leadman

ABC Genetics

Worldwide
Jean-Louis Schrago
Ch-1299 Crans
Switzerland

Mobile: +41 79 200 48 14

Fax: +41 22 361 06 50

Email: abc.gen-schrago@bluewin.ch

www.abcgenetics.com



H99SM1

LEONARD-RED

Born: 10/11/04 • CHE 120035022166 • aAa 312546

Daughter



Leonard Tina-Red (VG-87)



196WW13764

Daughter



Leonard Inge-Red
(EX-90)

PLATTERY TALENT LEONARD-RED (VG-87)

TALENT X RUBENS X CREATION

S: Ladino Park Talent-IMP-ET-RC (EX)

D: Plattery Rubens Heidi (EX-90)

Lifetime: 112,792 4.2% 4737 3.4% 3835cp

MGS: STBVQ Rubens-ET-RC (VG-88)

MGGS: Leadfield Creation-Red

- Top Swiss sire for lbs/kgs protein
- Excellent teats and udders
- Very wide rumps
- Long herd life
- Healthy udders

WORLDWIDE



swissgenetics 

Swissgenetics
Meielenfeldweg 12,
3052 Zollikofen, Switzerland

T +41 31 910 62 62
info@swissgenetics.ch
www.swissgenetics.com

LEONID-RED

Born: 4/18/05 • USA 61975378 • aAa 243 • DMS 345,456

Dam



Hartford Leonid 740-RC (EX-90-USA)



140HO2083

Daughter



Duperrut Leonid Caroussel-RC
(VG-85-CH)

NORTHWIND MARMAX LEONID-RED (VG-86)

MARMAX X PARADOX X WEBSTER X AEROSTAR

S: B-Hiddenhills Mar Marmax-ET-RC

D: Northwind Prdx Laura-Red-ET (VG-88 EX-MS)

2-01 365d 29,133 4.6% 1340 3.0% 817

3-08 365d 40,518 4.3% 1779 2.9% 1217

MGS: Starstruck-J Paradox-Red-ET

2nd Dam: Northwind Webster Lona-ET-RC (VG-88)

4-00 365d 39,430 4.4% 1743 3.0% 1196

3rd Dam: Viland Aero Lisa-RC (EX-91-2E EEEEE)

7-05 305d 27,000 4.0% 1085 2.9% 774

Lifetime: 174,413 4.1% 7130 3.1% 5326

- Tremendous production pedigree!
- Outcross bloodlines
- Early Marmax son
- Dam one of the best Paradox daughters

ABC Genetics

Worldwide
Jean-Louis Schrago
Ch-1299 Crans
Switzerland

Mobile: +41 79 200 48 14

Fax: +41 22 361 06 50

Email: abc.gen-schrago@bluewin.ch

www.abcgenetics.com



LOGAN-RED

Born: 5/19/03 • USA 51492588 • aAa 243 • DMS 456,561
Daughter



LaLéchère Logan Lea-Red (VG-88-CH)



6HO787

Daughter



Hoekman Logan 130-RC
(VG-85-2Y-USA)

NORTHWIND PRDX LOGAN-RED-ET (VG-85)

PARADOX X WEBSTER X AEROSTAR

S: Starstruck J Paradox-Red-ET

D: Northwind Webster Lona-ET-RC (VG-88)

4-00 365d 39,430 4.4% 1743 3.0% 1196

MGS: Delta Webster-ET

2nd Dam: Viland Aero Lisa-RC (EX-91-2E EEEEE)

7-05 305d 27,000 4.0% 1085 2.9% 774

Lifetime: 174,413 4.1% 7130 3.1% 5326

- Super production pedigree!
- Unique sire stack: Paradox x Webster x Aerostar
- Full sister Laura is VG-88 EX-MS with 40,518M
- Milk - Milk - Milk

ABC Genetics

Worldwide
Jean-Louis Schrago
Ch-1299 Crans
Switzerland

Mobile: +41 79 200 48 14

Fax: +41 22 361 06 50

Email: abc.gen-schrago@bluewin.ch

www.abcgenetics.com



LUDOVIC-RED

Born: 5/3/05 • USA 137067130 • aAa 312 • DMS 123,126
Daughter



140HO2082



Oppliger Ludovic Ancilla-Red

INDIES-VIEW LUDOVIC-RED (VG-87)

SEPTEMBER STORM X MARIO X RUBENS X JUBILANT

S: Pursuit September Storm-ET-RC (EX)

D: Quebequa Wilsher Letoyita-Red-ET (VG-88)

4-06 365d 32,316 4.0% 1285 3.3% 1069

MGS: Glen Drummond Mario-ET-RC

2nd Dam: Leela Rubens Letoya-Red (EX-90)

6-09 365d 29,470 3.6% 1053 3.0% 871

3rd Dam: Leela Jubilant Lara (GP-82-2Y Can)

4th Dam: Claverly Edna-Red (VG-86 Can)

Next 3 Dams: VG in Canada

- High type pedigree
- Grandam a famous "1st crop" Rubens
- Fancy show ring style
- Deep Canadian pedigree

ABC Genetics

Worldwide
Jean-Louis Schrago
Ch-1299 Crans
Switzerland

Mobile: +41 79 200 48 14

Fax: +41 22 361 06 50

Email: abc.gen-schrago@bluewin.ch

www.abcgenetics.com



MARK-RED

Born: 11/3/03 • USA 61087217 • aAa 432

Daughter



**PROVEN
SIRE**

6HO786



Pharisa Mark Eglantine-Red (VG-85-2Y)

JA-BOB MARK-RED-ET

COLBY X PRINCETON X MOMENTUM X CAVEMAN X MARK

S: Weav-Lina Colby-Red-ET

D: Ja-Bob Princess Hyla-Red-ET (VG-87)

2-04 365d 29,880 3.8% 1144 3.3% 978

MGS: Sikkema-Star-W Princeton-ET-RC (VG-85)

2nd Dam: Ohiana Mom Handmaid-ET (EX-91 DOM)

3-05 365d 34,230 3.7% 1272 3.3% 1117

3rd Dam: Ja-Bob Holly Jo-Red (EX)

4th Dam: Ja-Bob Mark Heavenly Joy (EX-92 DOM)

5th Dam: Sky-Hi Mars Helen-ET (EX-92-4E GMD DOM)

- From Helen Family
- Low somatic cell score
- High butterfat
- Outcross bloodlines!

ABC Genetics

Worldwide
Jean-Louis Schrago
Ch-1299 Crans
Switzerland

Mobile: +41 79 200 48 14

Fax: +41 22 361 06 50

Email: abc.gen-schrago@bluewin.ch

www.abcgenetics.com



MAZDA-RED

Born: 9/8/05 • USA 136722780 • aAa 321456

Daughter



76HO541



Locust-Ayr Mazda Iron-Red (VG-85)
3-00 274d 20,370 3.5% 714 3.0% 607

DERRWYN MAZDA-RED-ET (EX-92)

TALENT X FACTOR X TRIPLE THREAT X GOLD X MAGIC

S: Ladino Park Talent-IMP-ET-RC (EX)

D: Derrwyn Factor Miata-Red (EX-94-2E)

6-11 365d 36,900 4.2% 1560 2.8% 1049

Lifetime: 152,150 4.2% 6417 3.1% 4703

MGS: Renown Factor-ET-RC (GM)

2nd Dam: Derrwyn TT Mystic-RC (VG-86)

6-02 365d 27,200 3.9% 1068 2.8% 749

Lifetime: 140,260 4.0% 5669 2.8% 3905

3rd Dam: Derrwyn Gold Mistress (EX-91-2E EX-MS)

5-02 365d 23,540 3.4% 793 2.7% 638

4th Dam: Derrwyn Magic Missy (VG-88)

5th Dam: Derrwyn Bootmaker Misty (VG-85)

- Good components
- Fantastic udders
- Sires open-tall-dairy



Taurus Service Inc.
P.O. Box 164
Mehoopany, PA 18629
Phone: 570-833-5123 • 570-833-5513
Fax: 570-833-2690
www.taurus-service.com
Email: taurus@epix.net

TOLL FREE U.S. ORDERS: 800-836-5123

MONSTER-RC

Born: 8/15/05 • USA 170043872 • aAa 531 • DMS 135,345
Dam



140HO2092

Daughter



Ja-Bob Jordan Hopi-Red (EX-92-2E EX-MS)
6-01 365d 44,990 4.6% 2083 3.1% 1385

Green-Meadow Monster Laura-RC
(NC-USA)

STELSE O MAN MONSTER-RC

O-MAN X JORDAN X LEE X CAVEMAN X MARK

S: O-Bee Manfred Justice-ET (EX-94)

D: Ja-Bob Jordan Hopi-Red (EX-92-2E EX-MS)

6-01 365d 44,990 4.6% 2083 3.1% 1385

MGS: Ja-Bob Jordan-Red-ET (EX-90)

2nd Dam: TTown Lee Hope-ET-RC (VG-87)

3rd Dam: Ja-Bob Harmony Joy-Red-ET (EX)

4th Dam: Ja-Bob Mark Heavenly Joy (EX-92-2E)

5th Dam: Sky-Hi Mars Helen-ET (EX-92-4E GMD DOM)

- Son of the great O Man!
- From the Helen family, 9 generations VG-EX
- Super components
- Great management traits
- Dam is one of Jordan's finest daughters
- BB Kappa-casein

ABC Genetics

Worldwide
Jean-Louis Schrago
Ch-1299 Crans
Switzerland



Mobile: +41 79 200 48 14

Fax: +41 22 361 06 50

Email: abc.gen-schrago@bluewin.ch

www.abcgeneitics.com

RED-BOY-RED

Born: 9/29/06 • CHE 120060157635 • aAa 264

Daughter



Red-Boy Pianta-Red (GP-83)



196WW15179

Daughter



Lake-View Red-Boy Ebona-Red (GP-84)

RED-BOY-RED

SEPTEMBER STORM X STADEL X FACTOR

S: Pursuit September Storm-ET-RC (EX GM)

D: Fable-Red (EX-90)

Lifetime: 146,732 4.3% 6290 3.4% 5024


MGS: Stadel-Red

MGGS: Renown Factor-ET-RC (GM)

- High milk production
- Top scores for udder, type and feet & legs
- High fertility
- Easy calving

WORLDWIDE



swissgenetics 

Swissgenetics
Meielenfeldweg 12,
3052 Zollikofen, Switzerland

T +41 31 910 62 62
info@swissgenetics.ch
www.swissgenetics.com

REDLINER-RED

Born: 4/1/05 • WW 170201049/CAN 7528698 • aAa 531462
Daughter



80HO317

Daughter



MDHillbrook Sunburst-Red-ET (VG-89-2Y)
All-American Red & White Sr. 2-Yr-Old 2011
Nom. All-American Black & White Sr. 2-Yr-Old 2011

Rosedale Tea-Rose-Red
(EX-92)

FRADON REDLINER-RED-ET

TALENT X RUDOLPH X INSPIRATION X TRIPLE THREAT

S: Ladino Park Talent-IMP-ET-RC (EX)

D: Fradon Rudolph Jodie-ET-RC (EX-2E 10*)

4-03 365d 33,237 4.5% 1479 3.2% 1069cp

Life: 132,951 3.9% 5247 3.2% 4306cp

MGS: Startmore Rudolph-ET (EX Extra GM)

2nd Dam: Bridon Inspira Jodie-Red (EX 4*)

5-06 304d 19,381 4.2% 816 3.5% 672cp

3rd Dam: Bridon Threat Janice (VG-86)

- High conception rate
- Calving ease sire
- 4 show winning Red sisters
- One of the top sires for All-American daughters!
- High type PLUS milk!
- First proven sire from the Jodie family!



P.O. Box 164, Mehoopany, PA 18629

Phone: 570-833-5123 or 5513

Fax: 570-833-2690

www.taurus-service.com

Email: taurus@epix.net

Toll Free U.S: 800-836-5123



RR 2

Paris, ON N3L 3E2

Canada

Phone: 519-442-2918 or 519-732-3339

Fax: 519-442-2921

Email: browndalesires@gmail.com

REDMAN-RED

Born: 6/17/99 • WW 170127741/CAN 10646281 • aAa 342156

Daughter



70HO9954



Blondin Redman Seisme-Red-ET (EX-95)

Supreme & Grand Champion R&W Royal Winter Fair 2010 & 2011

Reserve Supreme & Grand Champion R&W World Dairy Expo 2010

VALLEYRIVER RUBEN REDMAN-RED-ET (EX ST)

RUBENS X MARK X TRIPLE THREAT X R MAPLE

S: STBVQ Rubens-ET-RC (VG-88)

D: Valleyriver Mark Meggie-ET-RC (VG-87 3*)

6-04 365d 25,584 4.4% 1120 3.5% 891cp

MGS: Walkway Chief Mark (VG-87)

2nd Dam: Valleyriver TT Nutmeg-Red (VG-85 6*)

3rd Dam: Glavindale R Maple Lady (VG-85)

4th Dam: Glavindale Rockman Lana (VG-85)

- Sired the Supreme Champion at the Royal Winter Fair 2010 & 2011 & the Reserve Supreme Champion at World Dairy Expo 2010!
- Several times #1 LPI Red & White sire
- Several All-American Red & White offspring
- High components with super udders
- Fast milking with great temperament
- Available in U.S. from Accelerated Genetics



GenerVations

PO Box 568

Campbellville, Ontario L0P 1B0 Canada

Toll Free: 800-244-5744

Phone: 905-873-8700

Fax: 905-877-1394

Email: info@generations.com

www.generations.com

Accelerated Genetics®



Accelerated Genetics

Phone: 800-451-9275

Email: info@accelgen.com

www.accelgen.com

RED ROCK-RED

Born: 8/22/05 • WW 170202844/DEU 1402760910 • aAa 261435
Daughter



250HO892



Lookout Jewels Red Rock-Red-ET (VG-87-2Y)
Nominated All-American R&W Summer Yrlg 2009
Res. Jr. Champion Quebec Spring R&W Show 2009

BOVIGEN-SF RED ROCK-RED-ET

SEPTEMBER STORM X RUBENS X RUDOLPH X LEADER

S: Pursuit September Storm-ET-RC (EX)

D: Lavender Ruby Redrose-Red (EX-96-3E)

7-04 365d 52,100 4.9% 2576 3.4% 1751

Lifetime: 255,978 4.3% 10988 3.3% 8563

MGS: STBVQ Rubens-ET-RC (VG-88)

2nd Dam: Northrose-I Lavender-ET-RC (EX-90)

3-10 365d 28,734 3.6% 1034 3.2% 919

3rd Dam: Rosedale Lea-Ann-ET-RC (EX-93-2E GMD)

4th Dam: Stookey Elm Park Blackrose-ET (EX-96-3E GMD)

Next 3 Dams: EX-93 DOM, VG-87, VG-89

- 3 winners in 3 countries as a young sire - Canada, France & Belgium
- Offspring nominated All-American Red & White
- From a prolific family of show winners
- Same family as Talent, Kite and Red-Marker
- Available in U.S. from Accelerated Genetics



GenerVations
PO Box 568
Campbellville, Ontario L0P 1B0 Canada
Toll Free: 800-244-5744
Phone: 905-873-8700
Fax: 905-877-1394
Email: info@generations.com
www.generations.com

Accelerated Genetics®



Accelerated Genetics
Phone: 800-451-9275
Email: info@accelgen.com
www.accelgen.com

ROCCO P-RED

Born: 7/10/06 • USA 62454208 • aAa 153624 • DMS 234,246
Daughter



**PROVEN
SIRE**

138HO3764



Kolly Rocco Fels Brook-Red (VG-88-CH)

GOLDEN-OAKS ROCCO P-RED-ET (VG-87)

REDMAN X PERK X RUBENS X JUBILANT X TONY

S: Valleyriver Rubn Redman-Red-ET (EX)

D: Golden-Oaks Perk Rae-P-Red-ET (EX-90)

1-11 365d 31,033 3.7% 1161 3.2% 983

MGS: Burket-Falls Perk-P-Red-ET

2nd Dam: Scientific Beauty Rae-ET-RC (EX-90)

4-03 365d 33,710 4.7% 1595 3.5% 1179

3rd Dam: Scientific Jubilant Rae-ET (EX-90 DOM)

4th Dam: C Hanoverhill Tony Rae (EX-96-3E GMD DOM)

5th Dam: C Hanover-Hill TT Roxette (EX-94-2E GMD)

6th Dam: Mil-R-Mor Roxette (EX GMD)

7th Dam: C Glenridge Citation Roxy (EX-97-4E GMD) Queen of Breed

- POLLED!
- Redman x Roxys
- High type!
- Kappa-casein AB

ABC Genetics

Worldwide
Jean-Louis Schrago
Ch-1299 Crans
Switzerland

Mobile: +41 79 200 48 14

Fax: +41 22 361 06 50

Email: abc.gen-schrago@bluewin.ch

www.abcgenetics.com



SAVARD-RED

Born: 11/27/02 • CHE 120022840643 • aAa 423615

Daughter



Elm-Park Kimora-Red (VG-87-2Y USA)



196WW12641

Daughter



GS Savard Tiara-Red

SAVARD-RED-ET (VG-89)

BRAD X STORM X JONN

S: Maral Juror Brad-RC (Juror x Leadman)

D: Penza-ET (EX-92)

Lifetime: 137,842 4.1% 5652 3.3% 4549cp

MGS: Maughlin Storm-ET (EX Extra)

MGGS: Dominator Jonn-ET-Red

- Conformation at the highest level
- Great scores for functionality
- High fertility (sire and daughters)
- Successful second crop daughters around the world
- Already 12 EX daughters from his test period!

WORLDWIDE



swissgenetics

Swissgenetics
Meielenfeldweg 12,
3052 Zollikofen, Switzerland

T +41 31 910 62 62
info@swissgenetics.ch
www.swissgenetics.com

SELAYO-RED

Born: 8/22/07 • CAN 104852643 • aAa 234



250HO2209

Dam



Gen-I-Beq Goldwyn Secret-ET-RC
(VG-87-2Y 2*)

GEN-I-BEQ SELAYO-RED

ELAYO X GOLDWYN X DURHAM X FORMATION X AEROSTAR

S: Alpar Stadel Elayo-Red-ET

D: Gen-I-Beq Goldwyn Secret-ET-RC (VG-87-2Y 4*)

2-00 365d 25,593 4.8% 1237 3.6% 917cp

MGS: Braedale Goldwyn (Extra)

2nd Dam: Gen-I-Beq Durham Sherry-ET-RC (VG-87 7*)

5-02 365d 40,036 3.9% 1574 3.2% 1268cp

3rd Dam: Glen Drummond Splendor-ET-RC (VG-86-2Y 36*)

4-10 305d 25,926 4.2% 1098 3.2% 818cp

4th Dam: Glen Drummond Aero Flower-RC (VG-88 18*)

5th Dam: Glen Drummond Shower-ET (EX 13*)

Next 4 Dams: EX-2E 7*, VG-85 4*, VG, VG

- #1 Type Genomic Tested Bull in Germany - December 2010
- Great German proof!
- Will be used for AI contracts and flushes



GenerVations

PO Box 568

Campbellville, Ontario L0P 1B0 Canada

Toll Free: 800-244-5744

Phone: 905-873-8700

Fax: 905-877-1394

Email: info@genervations.com

www.genervations.com

SPARROW-RC

Born: 8/3/06 • WW 170227357/ITA 28990115271 • aAa 213456

Daughters



**PROVEN
SIRE**

162HO46

Daughter



Sleegerdale Sparrow Kandy Bar-Red (GP-82-2Y)
Santschi Sparrow Shakira-Red (VG-85-2Y)

Roggua Sparrow Marise
Reserve Jr. Champion Ayr's Cliff 2010

GEGANIA DUPLEX SPARROW-RC

DUPLEX X CHAMPION X DURHAM X FORMATION X AEROSTAR

S: Mesland Duplex-ET (EX)

D: Gegania Champ Sara-ET-RC (VG-87)

2-00 305d 25,602 3.7% 944 3.1% 798cp

MGS: Calbrett-I H H Champion-ET (EX-Extra)

2nd Dam: Gen-I-Beq Durham Sherry-ET-RC (VG-87 7*)

5-02 365d 40,036 3.9% 1574 3.2% 1268cp

3rd Dam: Glen Drummond Splendor-ET-RC (VG-86-2Y 36*)

4-10 305d 25,926 4.2% 1098 3.2% 818cp

4th Dam: Glen Drummond Aero Flower-RC (VG-88 18*)

5th Dam: Glen Drummond Shower-ET (EX 13*)

Next 4 Dams: EX-2E 7*, VG-85 4*, VG, VG

- High type Duplex Red Carrier
- No Rubens, Talent or Advent
- Dam is maternal sister to Shaquille-RC
- Leaving show style calves with deep, open rib
- Available in U.S. from Accelerated Genetics



Generations

PO Box 568

Campbellville, Ontario L0P 1B0 Canada

Toll Free: 800-244-5744

Phone: 905-873-8700

Fax: 905-877-1394

Email: info@generations.com

www.generations.com

Accelerated Genetics®



Accelerated Genetics

Phone: 800-451-9275

Email: info@accelgen.com

www.accelgen.com

TABLEAU-RED

Born: 5/26/04 • DEU 768555470 • aAa 234165

Daughter



Tableau RS Nina-Red (EX-90)
2nd Lactation

TABLEAU-RED

TALENT X FABER

S: Ladino-Park Talent-IMP-ET-RC (EX)

D: Dolde (VG-87)

305d 24,963 4.4% 1087 3.5% 1063

MGS: Faber-Red-ET

2nd Dam: Dolores (VG-87)

305d 24,231 5.0% 1197 3.9% 946

- Highest Red Holstein sire in Germany - April 2012
- # 2 for TPI - April 2012
- Outstanding udders and feet & legs
- Good udder health
- Out of the Stadel family!



German Genetics International

Ag-Link International, Inc.

78 Baker Road

Tunkhannock, PA 18657

Phone: 570-836-6593

Email: aglinks@aol.com

www.ag-link.com



TUNDEL-RED

Born: 1/7/06 • USA 137221291 • aAa 132456

Daughter



**PROVEN
SIRE**

76HO550



Ridgedale Romance-Red-ET (VG-87)
2-10 365d 19,560 4.4% 852 3.1% 599

PEACHEY TUNDEL-RED (EX-92)

ADVENT X RUBENS X STORM X STARDUST X INSPIRATION

S: KHW Kite Advent-Red-ET (EX-94)

D: Peachey Rubens Toya-ET-RC (EX-91)

2-03 365d 27,859 4.0% 1111 3.0% 869

MGS: STBVQ Rubens-ET-RC (VG-85 GM)

2nd Dam: New-Vision Storm Tobiana-ET (EX-94-3E GMD DOM)

6-06 365d 37,010 4.4% 1645 3.2% 1166

3rd Dam: Ernest-Anthony SD Tobi-ET (EX-96-3E)

6-00 365d 44,090 5.0% 2191 3.2% 1423

4th Dam: C Alanvale Inspiration Tina (EX-95-2E GMD DOM)

- Great components
- Extreme type
- World famous Tobi family!



Taurus Service Inc.
P.O. Box 164
Mehoopany, PA 18629
Phone: 570-833-5123 • 570-833-5513
Fax: 570-833-2690
www.taurus-service.com
Email: taurus@epix.net

TOLL FREE U.S. ORDERS: 800-836-5123

VINCENT-RED

Born: 3/23/04 • USA 61579033 • aAa 342 • DMS 234
Daughter



Dameya Vincent Kokanee-RC (VG-87-CAN)



138HO3206

Daughter



Siegssoleil Vincent Bellaia-Red
(EX-91-CH)

VANDE ADVENT VINCENT-RED (EX-94)

ADVENT X PRELUDE X COUNSELOR X SHEIK X ELEVATION

S: KHW Kite Advent-Red-ET (EX-94)

D: Kingsmeadow Violet-RC (EX-91-2E EEEVE)

3-09 365d 32,520 4.0% 1303 3.4% 1093

MGS: Ronnybrook Prelude-ET

MGGS: Carnation Counselor

- Outcross including Durham, Prelude, Counselor
- Now classified EX-94!
- Type - Type - Type
- Fancy show type daughters!

ABC Genetics

Worldwide
Jean-Louis Schrago
Ch-1299 Crans
Switzerland

Mobile: +41 79 200 48 14

Fax: +41 22 361 06 50

Email: abc.gen-schrago@bluewin.ch

www.abcgenetics.com



ZORO-RED

Born: 5/28/07 • USA 138411352 • aAa 423 • DMS 345,234
Daughter



Yerly Zoro Otennia-Red (VG-85 VG-MS-CH)



138HO4130

Dam



Miss Celcius Lorena-ET
(EX-92-3E EX-MS)

EVER-GREEN-VIEW ZORO-RED-ET

ADVENT X CELCIUS X LEADER X VALIANT X ASTRONAUT

S: KHW Kite Advent-Red-ET (EX-94)

D: Miss Celcius Lorena-RC (EX-92-3E GMD DOM)

5-00 3x 365d 40,470 4.5% 1825 3.2% 1276

MGS: 528 Etazon Celsius-ET

2nd Dam: Rothrock Leader Leial-ET-RC (VG-89 GMD)

3-11 3x 326d 32,840 4.2% 1382 3.0% 997

3rd Dam: Walkup Valiant Lou Ella (EX-92 GMD DOM)

4th Dam: Walkup Astronaut Lou Ann (EX-94-4E GMD DOM)

5th Dam: Willolyn Elevation Lou (EX-91-3E DOM)

- Advent from a tremendous production family
- Same maternal line as top milk bull in U.S., Landslide, and top milk bull in Germany, Malvoy
- Same family as the great Leadman

ABC Genetics

Worldwide
Jean-Louis Schrago
Ch-1299 Crans
Switzerland

Mobile: +41 79 200 48 14

Fax: +41 22 361 06 50

Email: abc.gen-schrago@bluewin.ch

www.abcgenetics.com



RWDCA Eartags & Registrations



- ◆ No photos or sketches necessary for registry
- ◆ RWDCA eartags can also be used to register with Holstein USA
- ◆ Permanent identification at birth
- ◆ Uses superior Allflex double tamper-proof tags
- ◆ Affordably available through RWDCA

- ◆ Easy, accurate and economical
- ◆ Your choice of ID: 1 photo, 2 sketches or eartag ID
- ◆ Online reistration available
- ◆ Personal attention to questions and service
- ◆ Open herdbook available to breeders worldwide
- ◆ Official 3-generation pedigrees available free on request at time of registration

Registration Fees (member rates):

0 to 6 months.....	\$9
6 to 12 months.....	\$11
12 to 24 months.....	\$15
Over 24 months.....	\$22



Red & White Dairy Cattle Association

308B Ogden Avenue, Clinton, WI 53525 USA
 Ph: 608-676-4900 or 4909 • Fax: 608-299-0800
 Email: Registrations: rwdcareg@gmail.com
 Promotions: rwdcastephanie@gmail.com
 Website: www.redandwhitecattle.com

THE RED CONNECTION

The Red Bloodlines

Official
breed publication
of the RWDCA



8 Issues per year in full color and fully loaded with Red info - Red/RC sire summaries, show and sale reports, upcoming events, cow family stories, sire stories, roundtables, int'l features, cow indexes and much more.

***Become a member or
subscriber TODAY!***

Additional Mailings

All members and subscribers also receive our Leading Ladies and Sire Showcase, published once each year!



**RED & WHITE DAIRY CATTLE ASSOCIATION
308B OGDEN AVENUE
CLINTON, WI 53525 USA**

**NON-PROFIT ORG.
U.S. POSTAGE PAID
MERCERSBURG, PA
PERMIT No. 15
A Non-Profit Organization**