



Color Wireless Surveillance System

with Indoor/Outdoor Night Vision Camera(s)

Time



Under 15 Minutes*

Tools



Hand Tools

Skills - Easy



Plug & Play connectors, On screen set up

* Installation time may vary based on application and camera cabling

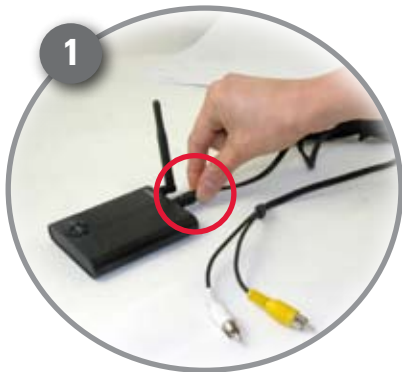


Includes:

- 1 x Wireless Receiver
- 1 x Power Adaptor (for receiver)
- 1 x RCA Video Cable
- Camera Battery Adaptor Cable(s)*
- Wireless Camera(s)*
- Power Adaptor(s) (for camera*)

* Number of cameras may vary by model. Check your package for specific content information.
 * Connect power adaptor to local 120V AC power outlet
 * 1 of each provided with the LW1010 System/ 2 of each provided with the LW1012 System.

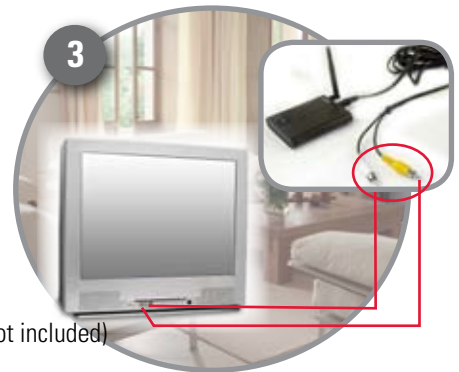
Step 1 - Wireless Receiver Set-up Installation



Connect one end of the AV Cable to the back of the receiver. Connect the other end to the Video IN (Yellow) and Audio IN (White) ports on the TV or Monitor for viewing and VCR or DVD Recorder for recording



Plug the Receiver power cable into the 9V POWER input. Plug the power adaptor into a wall outlet or surge protector.



TV (not included)

Place the receiver in a place that will have clear reception to your camera(s). Try to avoid placing the receiver near other 900MHz devices (such as older cordless phones, etc.)

How to use the Control Buttons:



AUTO BUTTON – When the receiver is set to AUTO Mode, it will continuously switch between the cameras that are set to ON. The dwell time is set to 4 seconds per camera (by default), however this can be adjusted to 2–30 seconds. To adjust the dwell time, press and hold both the AUTO and MANUAL buttons at the same time – this will produce beeps indicating one second increments (i.e. each beep represents one second in dwell time). Once the desired dwell time has been reached, release the buttons.

MANUAL BUTTON – Press the MANUAL button to switch between available cameras. The Receiver will switch to a different camera (if available and configured) each time the MANUAL button is pressed.

Helpful Tips:



- Use of other 900MHz products (including older model cordless phones) may cause interference with the picture quality. Try changing the channels on the Receiver and Camera, or moving the interfering device to another area.
- Better reception can often be accomplished by changing the position of the Receiver unit -or-changing the position of the Camera.
- The Receiver is a wireless product, and is subject to a number of environmental conditions. Walking between the receiver and camera may cause temporary interference.
- The optimal distance of the camera (during low light / nighttime use) from the person or object is 4–6 feet (up to 2 meters). The picture may become grainy beyond this distance due to lack of light –an additional light source in the room, such as a night light or illuminator may improve the picture quality.
- During low light / night use, the closer the Receiver is to the Camera, the better the picture quality. The picture may become grainy at farther distances. The optimal distance for normal home use is 15–60 feet (3–18 meters), however the MAXIMUM RANGE is up to 300feet in optimal conditions.
- Audio feedback may appear when the receiver and cameras are too close (under 15 feet / 3 meters).

** Requires viewing/recording device with RCA. Viewing/Recording device sold separately
***Additional receivers and/or cameras sold separately. See product manual for details

Color Wireless Surveillance System

with Indoor/Outdoor Night Vision Camera(s)

Step 2 - Wireless Camera Installation



The Camera can be powered either by using the provided Power Adaptor, or using a 9V battery (not included) in combination with the Battery Adaptor Cable.

Connecting Camera to Power Adaptor

Connect the Power Adaptor to the Female Barrel Power termination on the camera.



Connecting Camera to the Battery Adaptor Cable (optional)

Connect the Camera Battery Adaptor cable to the Female Barrel Power termination on the camera. Connect a battery to the cable.

NOTE: The new 9V battery should last for approximately 4 hours without the IR LEDs in use.

Did you know?

You can move your camera around the house or from one room to another with the use of the included battery adaptor cable.

NOTE: Before you install the camera(s), carefully plan where and how it will be positioned, and where you will route the cable that connects the camera to the power adaptor or battery adaptor. Before starting permanent installation, verify its performance by observing the image on a monitor. When camera is positioned in same location/position where it will be permanently installed.

NOTE: Wireless cameras require a power source (either an electrical outlet or battery power) to operate. If you plan to permanently mount the camera in a location, it is recommended to use the included Camera Power adaptor to prevent interruptions in the image, as the battery adaptor is intended as a temporary power solution.

Step 3 - Viewing your System

Turn on TV or Observation Monitor, and switch the video channel that the receiver has been connected to.

Tip: If your TV has a PIP feature, you can have the camera images displayed in the PIP window. Check your TV manual for info on PIP feature (if available).



It's all on the Web
www.lorecctv.com

For detailed setup information, please refer to your User's Manual. For additional information, please visit our website

www.lorecctv.com/support



 **LOREX**[®]
www.lorecctv.com