

Epson Stylus® C87



Quick Guide

Copyright Notice

All rights reserved. No part of this publication may be reproduced, stored in a retrieval system, or transmitted in any form or by any means, electronic, mechanical, photocopying, recording, or otherwise, without the prior written permission of Seiko Epson Corporation. The information contained herein is designed only for use with this Epson product. Epson is not responsible for any use of this information as applied to other equipment.

Neither Seiko Epson Corporation nor its affiliates shall be liable to the purchaser of this product or third parties for damages, losses, costs, or expenses incurred by purchaser or third parties as a result of: accident, misuse, or abuse of this product or unauthorized modifications, repairs, or alterations to this product, or (excluding the U.S.) failure to strictly comply with Seiko Epson Corporation's operating and maintenance instructions.

Seiko Epson Corporation shall not be liable for any damages or problems arising from the use of any options or any consumable products other than those designated as Original Epson Products or Epson Approved Products by Seiko Epson Corporation.

Responsible Use of Copyrighted Materials

Digital cameras, scanners, and ink jet printers, like conventional photocopiers and cameras, can be misused by improper copying or printing of copyrighted material. While some countries' laws permit limited copying of copyrighted material in certain circumstances, those circumstances may not be as broad as some people assume. Epson encourages each user to be responsible and respectful of the copyright laws when using digital cameras, scanners, and ink jet printers.

Trademarks

Epson and Epson Stylus are registered trademarks and Exceed Your Vision is a trademark of Seiko Epson Corporation.

DURABrite and RPM are registered trademarks of Epson America, Inc.

General Notice: Other product names used herein are for identification purposes only and may be trademarks of their respective owners. Epson disclaims any and all rights in those marks.

Contents

- Introduction5**
- Loading Paper6**
- Basic Printing8**
 - Printing in Windows8
 - Printing with Macintosh OS X11
 - Using Special Papers15
- Printing Photos17**
 - Printing Photos in Windows17
 - Printing Photos with Macintosh OS X21
- Replacing Ink Cartridges25**
 - Purchasing Ink Cartridges25
 - Ink Cartridge Precautions26
 - Removing and Installing Ink Cartridges26
- Solving Problems31**
 - Checking the Printer’s Lights31
 - Problems and Solutions32
 - Where To Get Help34
- Requirements and Notices36**
 - Windows System Requirements36
 - Macintosh System Requirements36
 - Important Safety Instructions37
 - Specifications39

FCC Compliance Statement41

Declaration of Conformity42

ENERGY STAR Compliance42

Epson America, Inc. Limited Warranty43

Copyright Notice46

Introduction

The Epson Stylus® C87 printer is the ideal desktop printer for business and home use. With its exceptional speed and print resolutions, it is practical for everyday tasks, yet capable of delivering superior photo printing.

The Stylus C87 features Epson's exclusive DURABrite® Ultra pigment inks. These quick-drying inks are resistant to water, fading, and smudging on plain and photo paper—so your prints stand the test of time. Because the ink particles remain near the surface and don't bleed through, they're ideal for double-sided prints.

Note: The light resistance of prints is rated up to 100 years on specialty papers, and 70 years on plain paper. The light resistance rating is based on accelerated testing of prints on Epson® special media, displayed indoors, under glass. Actual print stability will vary according to media, printed image, display conditions, light intensity, humidity, and other atmospheric conditions. Epson does not guarantee the longevity of prints. For maximum print life, display all prints under glass or lamination or properly store them.

After you have set up your Epson Stylus C87 as described on the *Start Here* sheet, use these instructions to:

- Load paper
- Print from Windows® or on a Macintosh®
- Replace ink cartridges
- Solve simple problems

For more information about your printer, see the on-screen *User's Guide*. An icon for the manual was automatically placed on your desktop when you installed the software.

Please follow these guidelines as you read the instructions:

Warning: Warnings must be followed carefully to avoid bodily injury.

Caution: Cautions must be observed to avoid damage to your equipment.

Note: Notes contain important information about your printer.

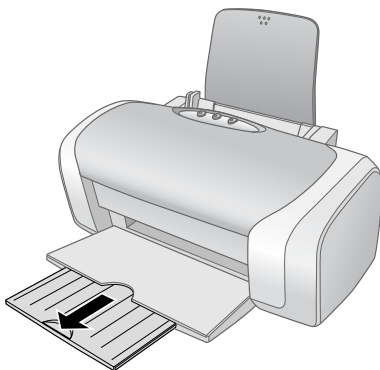
Tip: Tips contain hints for better printing.

Loading Paper

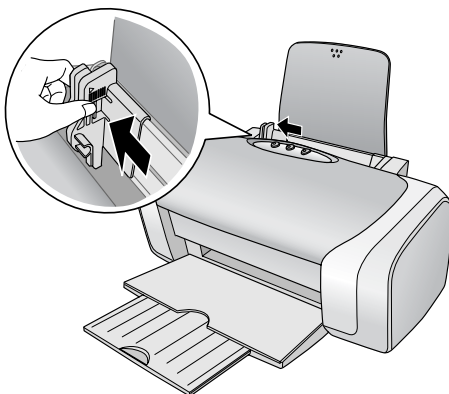
The type of paper you choose affects the way your printout looks, so be sure to select the correct paper for your job. If you are just printing a rough draft, plain paper is fine. For best results, however, you'll want to use one of Epson's special ink jet papers designed for your printer. For example, your photos will look great printed on Epson Premium Glossy Photo Paper. See page 15 for more information.

Follow these steps to load paper in your printer:

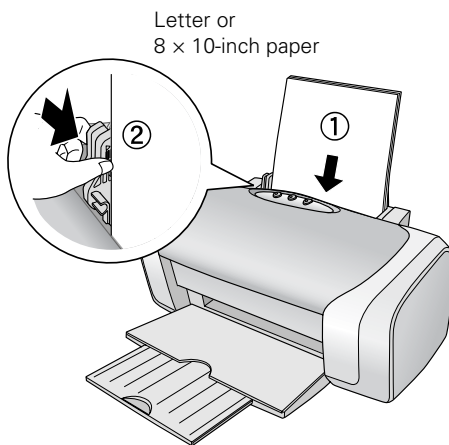
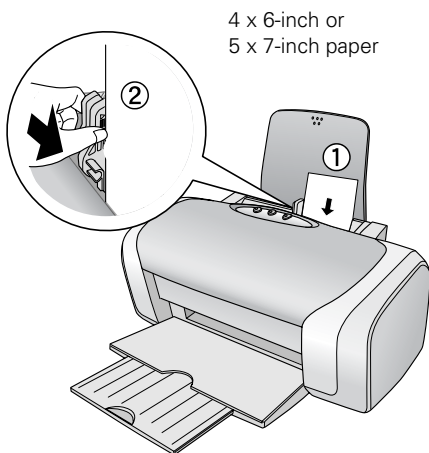
1. Open the output tray and pull out its extension.



2. Squeeze the left edge guide and slide it to the left.



3. Insert the paper, printable side up, against the right edge guide. Then slide the left edge guide against the paper (but not too tightly).



Note: You can load up to 100 sheets of plain paper and up to 20 sheets of most types of photo paper. (See the on-screen *User's Guide* for specific paper capacity guidelines.)

Follow these guidelines when loading paper:

- Don't load paper above the arrow on the left edge guide.
- Load the printable side face-up. It's often brighter or whiter than the other side.
- Always load the short edge first, even when printing in landscape mode.
- Load letterhead or preprinted paper into the printer top edge first.
- If you experience paper feeding problems, try loading fewer sheets.
- If you're using special paper, check the package for special loading instructions.

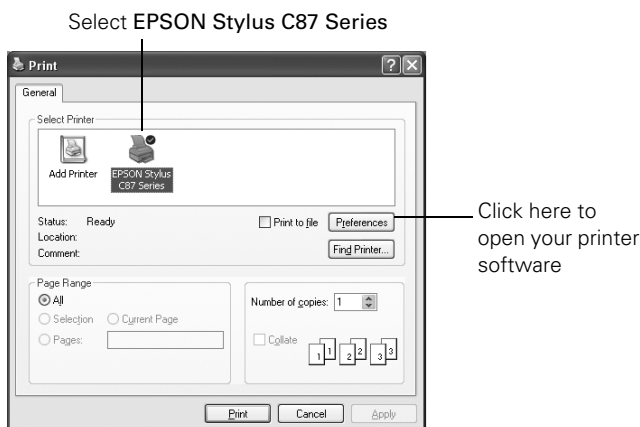
Basic Printing

Follow the instructions in this section for basic printing of your documents. For Windows, see below. For Macintosh OS X, see page 11.

If you are printing photographs, also see page 17 for more information about printing photos.

Printing in Windows

1. Open the File menu and select Print. You see a Print window like this one:



2. Make sure EPSON Stylus C87 Series is selected.
3. Click the **Properties** or **Preferences** button. (If you see a **Setup**, **Printer**, or **Options** button, click it. Then click **Properties** or **Preferences** on the next screen.)

You see the basic print settings window:



4. Select from these **Quality Option** settings:

- **Draft:** For rough drafts with reduced print quality
- **Text:** For text-only documents with higher text quality
- **Text & Image:** For documents with text and images with higher quality
- **Photo:** For photos and graphics with good quality and speed
- **Best Photo:** For photos or graphics with high print quality

5. Select the correct paper **Type** and **Size** settings for the paper you loaded in the printer. See “Selecting the Correct Paper Type” on page 16.

6. Select **Portrait** or **Landscape** for the Orientation setting.

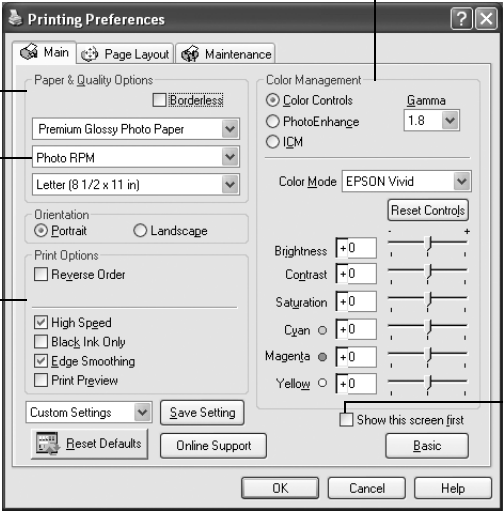
7. For more printing options, click the **Advanced** button. Then select the following settings as necessary.

Select a color management method
(To choose **No Color Adjustment**,
click ICM first)

Select **Paper & Quality Options** as necessary

Click here to select **Photo RPM®** for the best print quality on certain paper types

Select **Print Options** as necessary



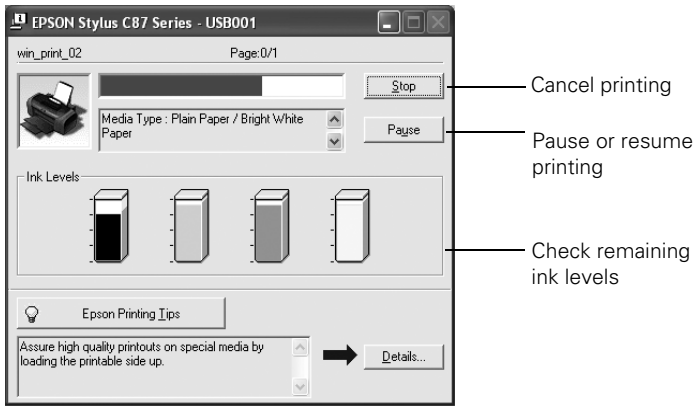
The screenshot shows the 'Printing Preferences' dialog box with three tabs: 'Main', 'Page Layout', and 'Maintenance'. The 'Main' tab is active, showing 'Paper & Quality Options' and 'Color Management' sections. Annotations with arrows point to specific elements: 'Select a color management method' points to the 'Color Management' section; 'Select Paper & Quality Options as necessary' points to the 'Paper & Quality Options' section; 'Click here to select Photo RPM® for the best print quality on certain paper types' points to the 'Photo RPM' dropdown menu; 'Select Print Options as necessary' points to the 'Print Options' section; and 'Click here if you want to see this Advanced screen each time you access your print settings' points to the 'Show this screen first' checkbox.

Click here if you want to see this Advanced screen each time you access your print settings

Note: For more information about advanced settings, or instructions on saving them as a group so you can reuse them later, click **?** or **Help**.

8. If you want to change the layout settings, click the **Page Layout** tab and select settings as necessary.
9. Click **OK** to save your settings, then click **OK** or **Print** to start printing.

During printing, this window appears to show the progress of your print job. You can use the buttons to cancel, pause, or resume printing. You can also see how much ink you have left.

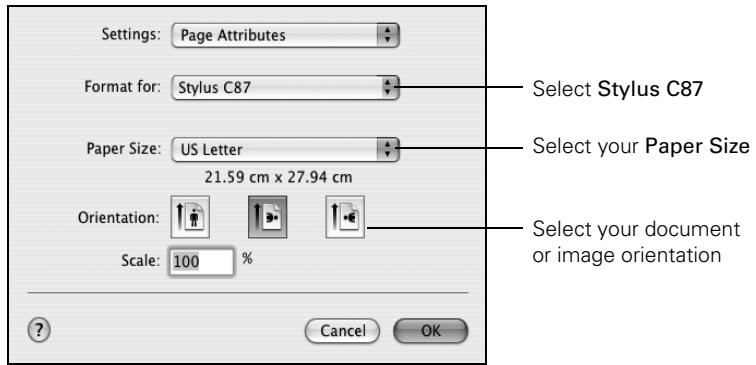




Tip: You can also cancel printing by pressing the paper button on your printer.

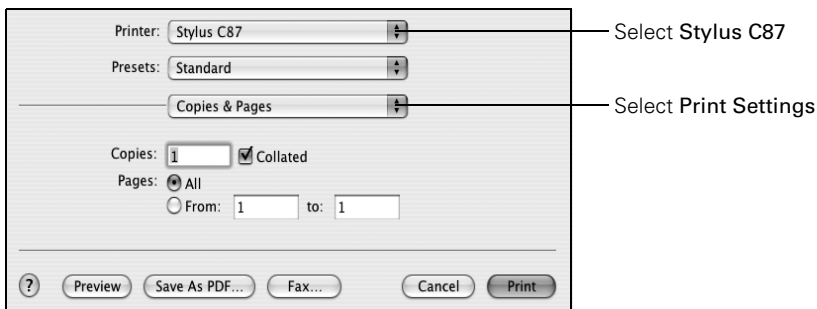
Printing with Macintosh OS X

Follow the steps below for basic printing of your Macintosh OS X documents. Before you begin, make sure you added your printer to the Print Center as described on the *Start Here* sheet.

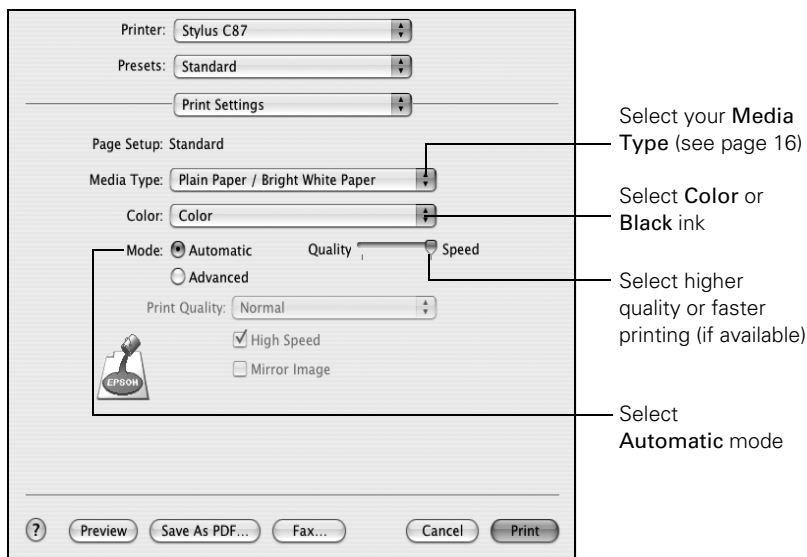
1. Open the File menu and select **Page Setup**. You see the Page Setup window:



2. Select **Stylus C87** in the Format for pop-up menu.
3. Select your Paper Size. For borderless printing, choose a paper size with the **Sheet Feeder-Borderless** option.
4. Select  portrait or  landscape for the orientation.
5. Click **OK**.
6. Open the File menu and select **Print**. You see a window like this one:



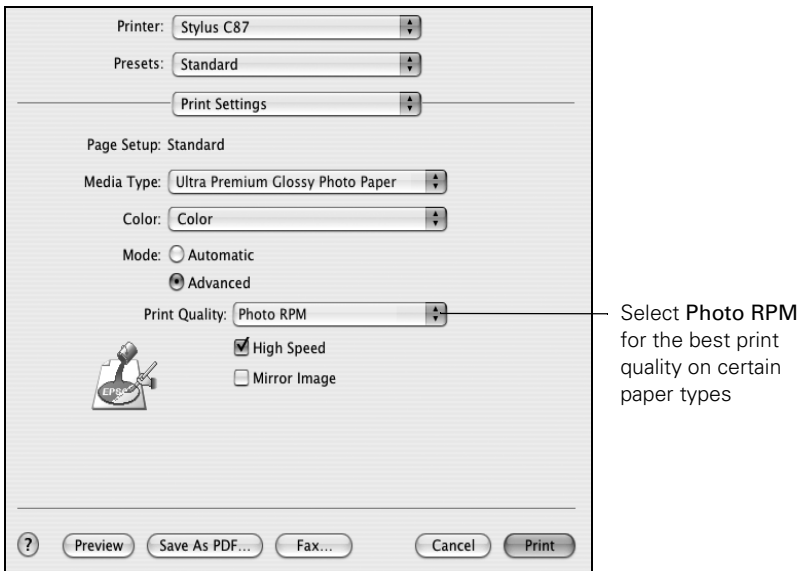
7. Select **Stylus C87** in the Printer pop-up menu.
8. Select **Print Settings** from the pop-up menu.
9. Select the following Print Settings as necessary:



Depending on your settings, you can choose these other options from the pop-up menu:


- **Copies & Pages:** Select the number of copies you want, or a page range.
- **Layout:** Select page layout options.
- **Output Options:** Save your print job as a PDF file.
- **Scheduler:** Schedule your print job to print at a later time.
- **Paper Handling:** Select page printing options, such as **Reverse print order**.
- **ColorSync or Color Management:** Select ColorSync® or adjust the color controls, change the gamma setting, or turn off color adjustments in the printer software.
- **Expansion:** Reduce or enlarge the image size for borderless printing.
- **Summary:** View a list of all your selections.


10. Click the **Advanced** button to change these settings:



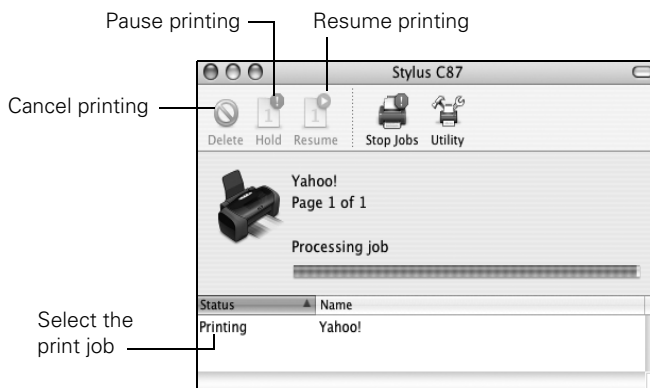
Note: For more information on advanced settings, or instructions on saving them as a group so you can reuse them later, click ?.

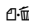
11. Click **Print**.

12. To monitor the progress of your print job, click the  printer icon when it appears in the dock on the bottom of your desktop.

If you're using OS X 10.2.x, click the  Print Center icon instead, then double-click **Stylus C87** in the Printer List window.

You see a screen like this:



Tip: You can also cancel printing by pressing the  paper button on your printer.

13. When you're finished, close the printer window or Print Center.

Using Special Papers

You can use the following special Epson papers in your Stylus C87.

Paper name*	Size	Part number
Epson Ultra Premium Glossy Photo Paper	Borderless 4 × 6 in. (102 × 152 mm)	S041934
	Letter (8.5 × 11 in. [216 × 279 mm])	S041935
Epson Premium Bright White Paper	Letter (8.5 × 11 in. [216 × 279 mm])	S041586
Epson Premium Glossy Photo Paper	Borderless 4 × 6 in. (102 × 152 mm)	S041808 S041727
	Borderless 8 × 10 in. (203 × 254 mm)	S041465
	Letter (8.5 × 11 in. [216 × 279 mm])	S041286
Epson Premium Semigloss Photo Paper	Letter (8.5 × 11 in. [216 × 279 mm])	S041331
Epson Glossy Photo Paper	4 × 6 in. (102 × 152 mm)	S041809
	Letter (8.5 × 11 in. [216 × 279 mm])	S041141
Epson Matte Paper Heavyweight	Letter (8.5 × 11 in. [216 × 279 mm])	S041257
Epson Semigloss Scrapbook Photo Paper	Letter (8.5 × 11 in. [216 × 279 mm])	SCR1001
PremierArt™ Matte Scrapbook Photo Paper for Epson	Letter (8.5 × 11 in. [216 × 279 mm])	SCR1002
Epson Double-Sided Matte Paper	Letter (8.5 × 11 in. [216 × 279 mm])	S041568

* The availability of paper types and sizes varies by location.

You can purchase genuine Epson ink and paper from an authorized Epson reseller. To find the nearest reseller, please call your nearest Epson sales office as described in “Where To Get Help” on page 34.

Selecting the Correct Paper Type

Be sure to select the correct Type or Media Type setting in your printer software:

For this paper	Select this setting
Plain paper Epson Premium Bright White Paper	Plain Paper/Bright White Paper
Epson Ultra Premium Glossy Photo Paper	Ultra Premium Glossy Photo Paper
Epson Premium Glossy Photo Paper	Premium Glossy Photo Paper
Epson Premium Semigloss Photo Paper	Premium Semigloss Photo Paper
Epson Glossy Photo Paper	Glossy Photo Paper
Epson Matte Paper Heavyweight Epson Double-Sided Matte Paper Epson Photo Quality Ink Jet Paper	Matte Paper - Heavyweight
Envelopes	Envelope

Printing Photos

You can print beautiful snapshots and enlargements with or without white borders. With proper care, photographs from your Epson Stylus C87 will last for many years. For best results, always use Epson papers. (See “Using Special Papers” on page 15 for more information.)

As with traditional photos, Epson recommends proper care that will minimize color changes and lengthen display life:

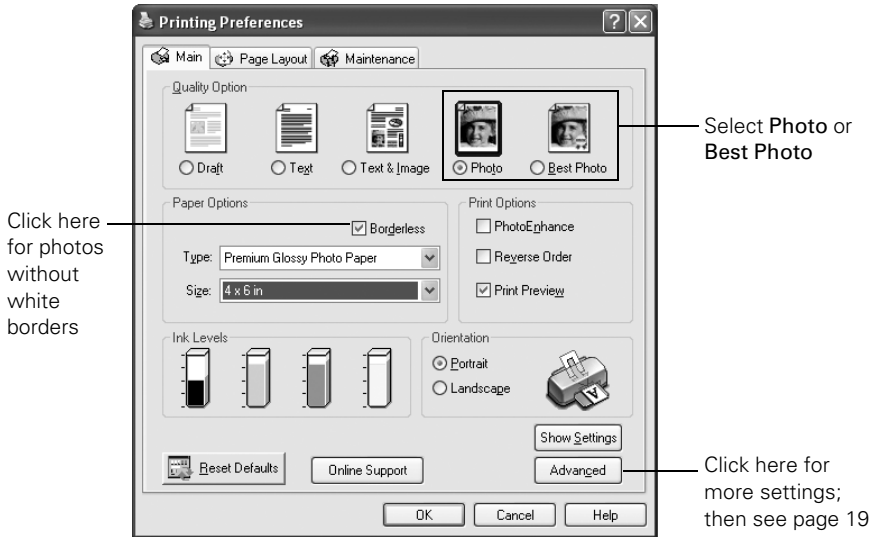
- Frame prints under glass or in a protective plastic sleeve to protect them from atmospheric contaminants like humidity, smoke, and high levels of ozone.
- As with all photographs, keep your prints away from direct sunlight.
- For proper storage, keep your prints in a photo album or plastic photo storage box in acid-free, archival sleeves commonly available from most camera stores.
- Always keep unused paper in the original package.

For instructions on loading photo paper, see page 6. Then see below for printing in Windows, or page 21 for printing in Mac OS® X.

Printing Photos in Windows

1. Open the File menu and click **Print**.
2. Make sure your printer is selected, then click **Properties** or **Preferences**. (If you see a **Setup**, **Printer**, or **Options** button, click it. Then click **Properties** or **Preferences** on the next screen.)

You see a window like this one:



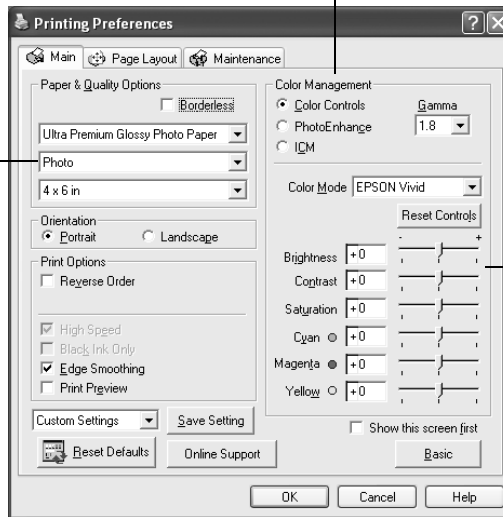
3. Select **Photo** or **Best Photo** as the Quality Option setting.
4. Select the paper **Type** for the paper you're using. (See page 16.)
5. For pictures without white borders, click the **Borderless** checkbox. Read the message and click **OK**.
6. Select your paper **Size** setting.
7. Select **Portrait** or **Landscape** as the orientation setting.
8. Do one of the following:
 - Click **OK**, then click **OK** or **Print**.
 - If you want to print at the highest resolution possible, or use special settings, continue with the steps in the next section.

Customizing Your Photo Settings

1. On the Main tab, click the **Advanced** button in the bottom right corner of the window. If you see a warning note, click **Continue**.
2. Select the following advanced settings as necessary:

Select a color management method
(To choose **No Color Adjustment**,
click **ICM** first)

Click here to select
Photo RPM (5760 × 1440)
for the best print quality
on certain paper types



Adjust
colors here

Note: For the highest print quality, select **Photo RPM**. Please note that printing will take longer in this mode and it is not available if you choose the **Borderless** checkbox.

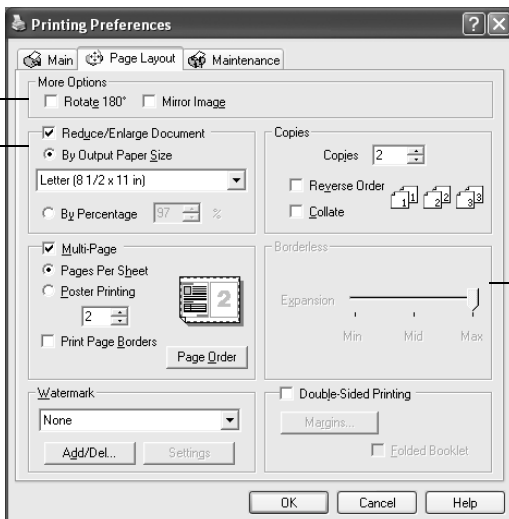
For more information about the print settings, click **?** or **Help**.

3. Once you've finished selecting advanced settings, you can:
 - Click **OK** to save your settings, return to the Print window, and print.
 - Click the **Basic** button to return to the basic settings.
 - Click the **Page Layout** tab and continue with step 4 to select layout options.

4. Select the following page layout settings as necessary:

Select image position options here

Select image resizing options here

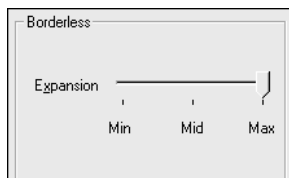


Adjust borderless setting here (see step 6, below)

Note: Some layout settings may not be available, depending on other settings you chose.

5. Select image position or resizing options as necessary. These affect only your printed image, and are not available for borderless printing.
6. If you're printing borderless photos, you can adjust the Expansion slider to choose **Min**, **Max**, or the in-between setting.

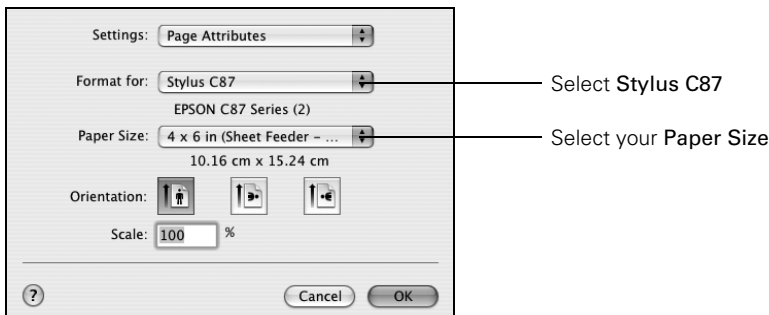
Min is the least amount of image expansion; there may be a small white edge on the borders of the print. **Max** expands the image to ensure that there are no unprinted edges, but the edges of the image may not appear in the print.



7. Click **OK** to save your settings, then click **OK** or **Print**.

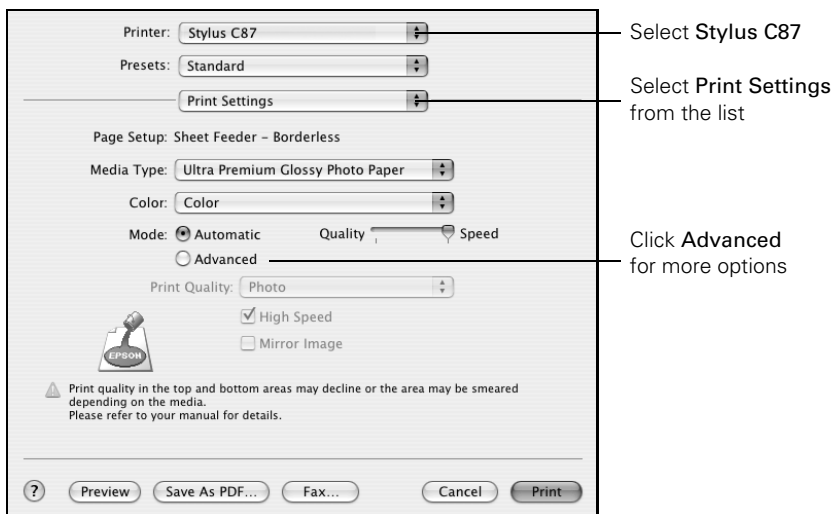
Printing Photos with Macintosh OS X

1. Start your photo program and open your photo file.
2. Open the File menu and select **Page Setup**. You see a window like this one:



3. Select **Stylus C87** in the Format for pop-up menu.
4. Select your Paper Size. For borderless photos, choose one of the following:
 - 4 × 6 (Sheet Feeder-Borderless)
 - 5 × 7 (Sheet Feeder-Borderless)
 - 8 × 10 (Sheet Feeder-Borderless)
 - Letter (Sheet Feeder-Borderless)
5. Select [Portrait icon] portrait or [Landscape icon] landscape as the orientation setting.
6. Click OK.
7. Open the File menu and click Print.

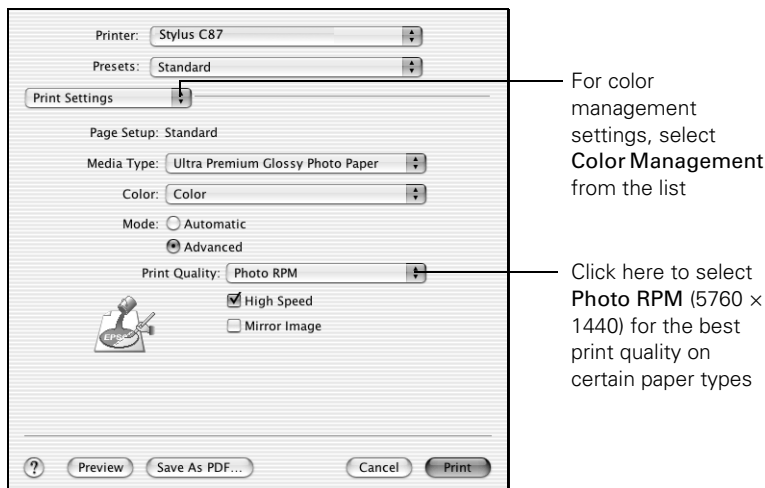
8. Select **Stylus C87** in the Printer menu and select **Print Settings** from the pop-up menu. You see a window like this one:



9. Select the correct **Media Type** option to match the paper you're using. (See "Selecting the Correct Paper Type" on page 16 for more information.)
10. Select **Quality** (for higher quality) or **Speed** (for faster printing) using the slider.
11. Do one of the following:
- Click **Print**.
 - If you want to print at a higher resolution or use special settings, continue with the steps in the next section.

Customizing Your Photo Settings

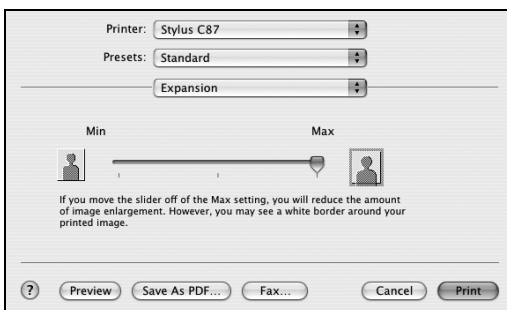
1. Click the Advanced button.
2. Select these advanced settings as necessary:



Note: For the highest print quality, select **Photo RPM**. Note that printing will take longer in this mode.

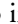
For more information on advanced settings, or instructions on saving them as a group so you can reuse them later, click the ? button.

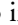
3. If you're printing photos without white borders, select **Expansion** from the pop-up menu. You see a window like this one:




4. Adjust the Expansion slider to choose **Min**, **Max**, or the in-between setting.
Min is the least amount of image expansion; there may be a small white edge on the borders of the print. **Max** expands the image to ensure that there are no unprinted edges, but the edges of the image may not appear in the print.
5. Click **Print**.

Replacing Ink Cartridges

When the red  ink light flashes, one or more ink cartridges are low on ink.

When the red  ink light stays on, you need to replace the cartridge(s).

When you print, you'll also see a message on your screen telling you which cartridge is low or empty.

When a cartridge is more than six months old, you may need to replace it if printouts don't look their best. If the quality doesn't improve after cleaning and aligning the print head, you can replace the cartridge even if the red  ink light is off.

Note: You cannot continue printing with one ink cartridge empty, even if the other cartridges still contain ink. Before printing, replace the empty cartridge.

Purchasing Ink Cartridges

Use these Epson ink cartridges within six months of installing them and before the expiration date on the package.

Ink cartridge	Part number
Black	T063120
Cyan	T063220
Magenta	T063320
Yellow	T063420

To ensure good results, use genuine Epson ink cartridges and do not refill them. Other products may cause damage to your printer not covered by Epson's warranty.

You can purchase genuine Epson ink and paper from an authorized Epson reseller. To find the nearest reseller, please call your nearest Epson sales office as described in "Where To Get Help" on page 34.

Ink Cartridge Precautions

Warning: Keep ink cartridges out of the reach of children and don't drink the ink.

If ink gets on your hands, wash them thoroughly with soap and water. If ink gets in your eyes, flush them immediately with water.

Caution: Don't remove the cartridge label, or ink will leak.

Don't remove the green IC chip from the cartridge. Installing a cartridge without an IC chip can damage the printer. Avoid touching the green IC chip, as this can damage the ink cartridge.


If you remove an ink cartridge temporarily, protect the ink supply port on the bottom of the cartridge from dirt and dust. Place it in the original packaging, if you still have it, or in a small box.

Store ink cartridges in the same environment as the printer. Stand the cartridges upright (the label identifying the color should be on top).

Removing and Installing Ink Cartridges

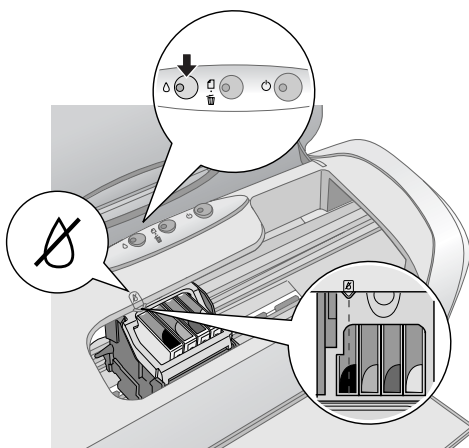
Be sure you have a new ink cartridge before you begin. Once you start replacing a cartridge, you must complete all the steps in one session.

Caution: Leave the empty/low cartridge installed until you have obtained a replacement, or the ink remaining in the print head nozzles may dry out.

1. Make sure the printer is turned on (the green  power light should be on, but not flashing).
2. Open the printer cover.

3. Press and release the Δ ink button.

The ink cartridge holder moves to the left, and the cartridge that needs to be replaced stops under the \otimes ink out mark. The \odot power light flashes.



Caution: To avoid damaging the printer, never move the print head by hand.

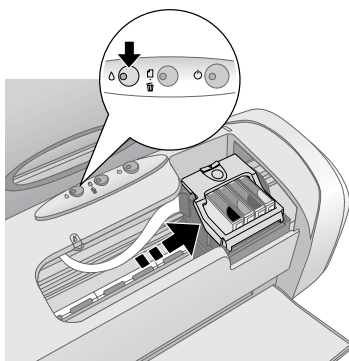
Note: Don't hold down the Δ ink button for more than 3 seconds, or the printer will start to clean the print head.

If no cartridge needs to be replaced, the holder moves to the ink cartridge replacement position, shown on the next page. Go to step 5.

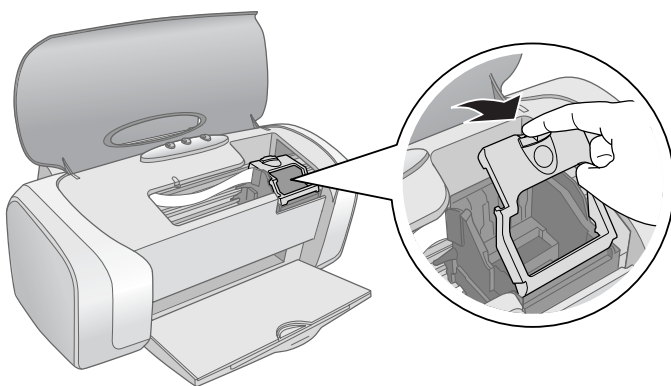
4. Press the Δ ink button again.

- If more than one cartridge is empty, the next cartridge moves under the \otimes ink out mark.

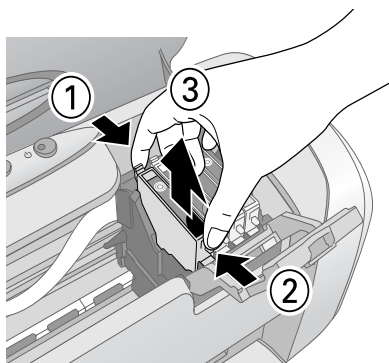
- If all the empty cartridges have been identified, the print head moves right to the ink cartridge replacement position, shown below.



5. Open the cartridge cover.

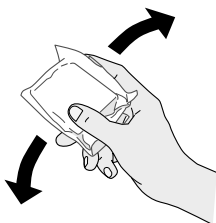


6. Squeeze the back tab of the empty/low cartridge and lift it out of the printer. Don't take the used cartridge apart or try to refill it.



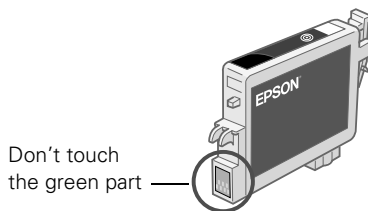
Warning: If ink gets on your hands, wash them thoroughly with soap and water. If ink gets into your eyes, flush them immediately with water.

7. Before you remove the new cartridge from its package, shake it four or five times. Then remove it from the package.

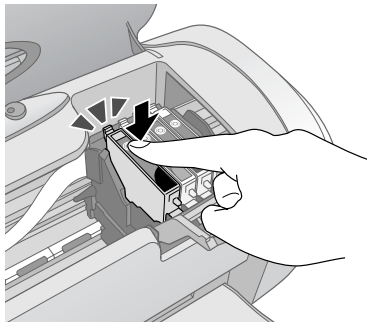
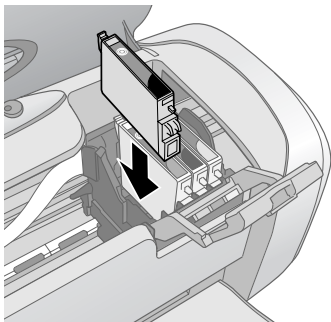


Caution: Do not remove or tear the label on the cartridge; otherwise ink will leak.

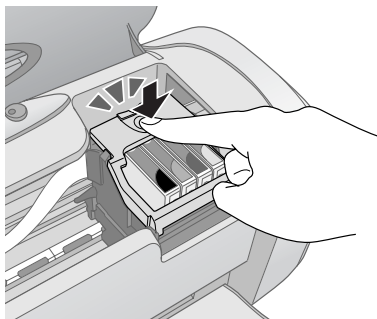
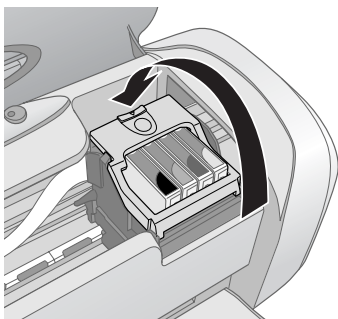
Don't touch the green chip on the front of the cartridge; you may inhibit normal operation and printing.



- Lower the cartridge into the holder and push it down until it clicks into place



- If you need to replace other ink cartridges, repeat steps 6 through 8 before continuing with step 9.
- Close the ink cartridge cover and make sure you hear it click into place.



- Close the printer cover.
- Press the Δ ink button. The printer begins charging the ink delivery system.

The green P power light flashes and the printer makes noise. Charging takes about half a minute. When it's finished, the green P power light stops flashing and stays on, and the red Δ light goes out.

Caution: Never turn off the printer while the green P power light is flashing, or you'll waste ink.

Note: If the red Δ light stays on (not flashing), the ink cartridge may not be installed correctly. Press the Δ ink button again and reinstall the ink cartridge until it clicks into place.











Solving Problems

If you have a problem with your Epson Stylus C87, check the printer's lights (as described below) to diagnose what may be causing it.

You can also see “Problems and Solutions” on page 32 for basic troubleshooting suggestions, or read your on-screen *User's Guide* for more detailed help.

If you cannot solve the problem, see “Where To Get Help” on page 34.

Checking the Printer's Lights


Lights	Explanation
Green  power light flashes	The printer is receiving a print job, replacing an ink cartridge, charging ink, or cleaning the print head.
Red  paper light is on	Your paper ran out. Load more paper, then press the  paper button to resume printing.
Red  paper light flashes	Paper is jammed in the printer. Press the  paper button to eject the paper. If that doesn't work, turn off the printer, open the cover, and pull the paper out from the front, including any torn pieces. Then turn on the printer, reload paper, and press the  paper button.
Red  ink light flashes	One of the cartridges is low on ink. Check the message that appears on your screen to determine which cartridge is low. Make sure you have a replacement cartridge.
Red  ink light is on	One of the cartridges is out of ink or not installed. Make sure you have a replacement cartridge, then follow the steps on page 26 to install it. If you have just installed a new cartridge, it may be incompatible with the printer or incorrectly installed. Reinstall it or replace it with the correct cartridge.
Green  power light and red  ink light are on	An ink cartridge is not installed correctly. Reinstall it as described on page 26.

Lights	Explanation
Red 𐀀 paper and 𐀁 ink lights flash alternately	Paper may be blocking movement of the print head. Turn off the printer, then open the cover and remove any jammed paper or other foreign objects. Turn the printer back on. If the lights are still on, contact Epson as described on page 34.
Green 𐀂 power light is off; red 𐀀 paper and 𐀁 ink lights flash	The printer may have an internal error. Turn off the printer, wait a few seconds, and turn it on again. If the lights are still flashing, contact Epson as described on page 34.

Problems and Solutions

You see banding (light lines).



- Make sure the paper **Type** or **Media Type** setting matches the paper you're using.
- The print head nozzles may need cleaning; follow the instructions below to clean the print head:
 1. Make sure the printer is turned on but not printing, and the red 𐀁 ink light is off.
 2. **Windows:** Right-click the  printer icon on your taskbar (in the lower right corner of your screen). Select **Head Cleaning**.

Note: If you don't see the icon, go to your printer properties window as described on page 8, click the **Maintenance** tab, then select **Head Cleaning**.

Macintosh OS X: Open the Applications folder and select **Epson Printer Utility**. Select **Stylus C87** in the printer list, click **OK**, and select **Head Cleaning**.

3. Click **Start** or **Next**.

Cleaning takes several seconds. The printer makes noise and the green ⏻ power light flashes.

Caution: Never turn off the printer while head cleaning is in progress. You may damage the printer.

4. When the green ⏻ power light stops flashing, make sure paper is loaded in the printer, then do the following:

Windows: Click **Print Nozzle Check Pattern**. Then click **Print**.

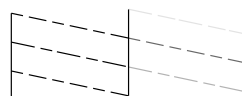
Macintosh: Click **Confirmation**, then click **Next**.

The nozzle check pattern prints.

5. If the nozzle check pattern has no gaps or white lines as shown, click **Finish**.



If the pattern has gaps or is faint, click **Clean** to clean the print head again.



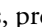

You can also turn the printer off and wait overnight. This allows any dried ink to soften. Then try cleaning the print head again.

- The ink cartridges may need replacing; see page 26 for instructions.

Your printout is blurry or smeared.

- Make sure the printable (whiter) side of the paper is face-up.
- Use Epson papers to ensure proper saturation and absorption of genuine Epson ink.
- You may need to align the print head. See the on-screen *User's Guide* for instructions.

Your paper doesn't feed correctly or jams in the printer.

- If multiple pages feed at once, remove the paper from the sheet feeder, fan the edges to separate the sheets, then reload it.
- If paper jams, press the  paper button for several seconds to clear the jam. If that doesn't work, open the cover and pull the paper out from the front, including small pieces that may have torn off. Reload the paper and press the  paper button.
- Heavily saturated prints may curl, causing a paper jam when printing on both sides of the paper.
- Make sure you use new, smooth, high-quality paper, loaded printable side up.
- Don't load paper above the arrow mark inside the left edge guide.
- Place the paper against the right edge, behind the tab. Slide the left edge guide against it, but not too tightly.

Where To Get Help

Internet support service in Latin America

Service	Access
World Wide Web	From the Internet, you can reach Epson Support at www.latin.epson.com . At this site, you can download drivers and other files, access troubleshooting information, and receive technical advice through e-mail.

Telephone support service in Latin America

Country	Telephone number
Argentina	(54-11) 4346-0300
Brazil	(55-11) 4196-6350
Chile	(56-2) 230-9500
Costa Rica	(506) 210-9555 (1-800) 377-6627

Country	Telephone number
Colombia	(57-1) 523-5000
Mexico Mexico City Other cities	(52-55) 1323-2052 01-800-087-1080
Peru	(51-1) 224-2336
Venezuela	(58-212) 240-1111

Note: If your country does not appear on the list, contact the nearest Epson sales office.

Toll or long distance charges may apply.

Please have the following information ready:

- Product name (Epson Stylus C87)
- Product serial number (located on the back of the printer)
- Proof of purchase (such as a store receipt) and date of purchase
- Computer configuration and operating system version
- Description of the problem

You can purchase genuine Epson ink and paper from an authorized Epson reseller. To find the nearest reseller, please call your nearest Epson sales office.

Requirements and Notices

Windows System Requirements

- A Microsoft® Windows compatible PC with a Pentium®-equivalent processor (233 MHz or faster recommended)
- Microsoft Windows 98SE, Windows Me, Windows 2000, or Windows XP
- At least 64MB RAM (128MB recommended)
- 100MB free hard disk space (200MB or more recommended)
- VGA or better display adapter and monitor (SVGA for Windows XP)
- CD-ROM or DVD drive for installing the printer software
- Parallel connection: a high-speed, bidirectional IEEE-1284 compliant parallel cable, up to 3 meters (10 feet long); the cable must have a D-SUB, 25-pin, male connector for your computer, and a 36-pin, Centronics® compatible connector for the printer.



USB connection: a computer with preinstalled Windows 98 SE, Me, 2000, or XP, and a Windows-compliant USB port and shielded USB “AB” cable. Using an improperly shielded USB cable may cause the printer to malfunction.

Macintosh System Requirements

- An Apple® iMac™ series or Power Macintosh G3, G4, or G5 with a built-in USB port
- Macintosh OS X 10.2 or later
- 128MB RAM (256MB recommended)
- At least 100MB free hard disk space (200MB recommended)
- VGA display or better
- CD-ROM or DVD drive for installing the printer software.
- A shielded USB “AB” cable. Using an improperly shielded USB cable may cause the printer to malfunction.

Important Safety Instructions

Before using your printer, read these safety instructions to make sure you use it safely and effectively:

- Be sure to follow all warnings and instructions marked on the printer.
 - Use only the type of power source indicated on the printer's label.
 - Connect all equipment to properly grounded power outlets. Avoid using outlets on the same circuit as photocopiers or air control systems that regularly switch on and off.
 - Place the printer near a wall outlet where the plug can be easily unplugged.
 - Do not let the power cord become damaged or frayed.
 - If you use an extension cord with the printer, make sure the total ampere rating of the devices plugged into the extension cord does not exceed the cord's ampere rating. Also, make sure the total ampere rating of all devices plugged into the wall outlet does not exceed the outlet's ampere rating.
 - Keep your printer and computer system away from potential sources of electromagnetic interference, such as loudspeakers or cordless telephone base units.
 - Avoid locations that are subject to rapid changes in heat or humidity, shocks or vibrations, or dust.
 - Leave enough room around the printer for sufficient ventilation, leaving at least 10 cm (3.9 inches) between the back of the printer and the wall.
 - Do not place the printer near a radiator or heating vent or in direct sunlight.
 - Place the printer on a flat, stable surface that extends beyond the printer base in all directions. The printer will not operate properly if it is tilted or at an angle.
 - When transporting or storing the printer, don't tilt it, stand it on its side, or turn it upside-down. This may allow ink to leak from the ink cartridges.
 - Turn off and unplug the printer before cleaning. Clean with a damp cloth only. Do not spill liquid on the printer.
- Caution:** Always turn the printer off using the  power button. Don't switch off the power strip or unplug the printer until the green  power light is off.
- Do not block or cover the openings in the printer's case or insert objects through the slots.
 - Except as specifically explained in this manual, do not attempt to service the printer yourself.
 - Unplug the printer and refer servicing to qualified service personnel under the following conditions:

If the power cord or plug is damaged; if liquid has entered the printer; if the printer has been dropped or the case damaged; if the printer does not operate normally or exhibits a distinct change in performance. Adjust only those controls that are covered by the operating instructions.

Ink Cartridge Safety Instructions

- Keep ink cartridges out of the reach of children.
- Be careful when you handle used ink cartridges; there may be ink remaining around the ink supply port. If ink gets on your skin, wash it off with soap and water. If it gets in your eyes, flush them immediately with water.
- Do not put your hand inside the printer or touch a cartridge during printing.
- Do not move the print head by hand. You may damage the printer.
- Install the ink cartridge immediately after you remove it from its package. Leaving the cartridge unpacked for a long time before use can result in reduced print quality.
- Do not use an ink cartridge beyond the date printed on the cartridge carton. For best results, use up the ink cartridges within six months of first installing them.
- Store ink cartridges in a cool, dark place.
- Store ink cartridges with the bottom of the packaging facing down.
- After bringing an ink cartridge inside from a cold storage site, allow it to warm up at room temperature for at least three hours before using it.
- Do not shake an ink cartridge after removing it from its package; this can cause leakage.
- Do not remove or tear the label on an ink cartridge; this can cause leakage.
- Do not dismantle the ink cartridges or try to refill them. This could damage the print head.
- Do not touch the green IC chip on the front of the cartridge. This may affect normal operation and printing.
- If you remove an ink cartridge for later use, protect the ink supply area from dirt and dust and store it in the same environment as the printer. Note that there is a valve in the ink supply port, making covers or plugs unnecessary, but care is needed to prevent the ink from staining items that the cartridge touches. Do not touch the ink cartridge ink supply port or surrounding area.
- Before transporting the printer, make sure the print head is capped in the far right position and the ink cartridges are in place. Secure the ink cartridge holder with the included insert to make sure it remains in the proper position.

Specifications

Printing	
Printing method	On-demand ink jet
Nozzle configuration	239 nozzles; Black: 180 nozzles; color: 59 nozzles for each color (cyan, yellow, magenta)
Print direction	Bidirectional with logic seeking
Ink Cartridges	
Color	Black: T063120, Cyan: T063220, Magenta: T063320, and Yellow: T063420
Cartridge life	6 months at 25 °C (77 °F) after opening the package
Temperature	Storage: -20 to 40 °C (-4 to 104 °F) 1 month at 40 °C (104 °F) Transit: -30 to 50 °C (-22 to 122 °F) 10 days at 50 °C (122 °F) Freezing*: -16 °C (3.2 °F)
Dimensions	12.7 (W) × 73.5 (D) × 55.3 mm (H) (0.5 × 2.9 in × 2.2 in)
*Ink thaws and is usable after approximately 3 hours at 25 °C (77 °F).	
Note: To ensure good results, use genuine Epson ink cartridges and do not refill them. Other products may cause damage to your printer not covered by Epson's warranty. Do not use an ink cartridge if the date on the package has expired.	
Mechanical	
Paper feed method	Friction
Paper path	Automatic sheet feeder, top entry
Sheet feeder capacity	About 150 sheets at 90 g/m ² (24 lb.)

Dimensions	Storage: 460 mm (W) × 242 (D) × 191.2 mm (H) (18.1 × 9.5 × 7.5 in.) Printing: 460 (W) × 437 (D) × 309 mm (H) (18.1 × 17.2 × 12.2 in.)
Weight	4.2 kg (9.2 lb.), without ink cartridges
Electrical	
Rated voltage	AC 100 - 240 V
Input voltage range	90 - 264 V
Rated frequency range	50 to 60 Hz
Input frequency range	49.5 to 60.5 Hz
Rated current	0.4 - 0.2 A
Power consumption	Approx. 19 W (ISO 10561 Letter pattern) Approx. 4.5 W in sleep mode Approx. 0.8 W in power-off mode
Note: Check the label on the back of the printer for the voltage information.	
Environmental	
Temperature	Operation: 10 to 35 °C (50 to 95 °F) Storage: -20 to 60 °C (-4 to 140 °F) 1 month at 40 °C (104 °F) Transit:* -20 to 60 °C (-4 to 140 °F) 120 hours at 60 °C (140 °F)
Humidity	Operation: 20 to 80% RH** Storage*: 5 to 85% RH**
* Stored in shipping container ** Without condensation	
Scanning	
Scanner type	Flatbed color image scanner
Photoelectric device	CIS

Effective pixels	5100 × 7020 pixels at 600 dpi, 100%
Maximum document size	8.5 × 11.7 inches (216 × 297 mm) US letter or A4 size; the reading area can be specified from your software
Scanning resolution	600 dpi (main scan) 1200 dpi with Micro Step Drive™ (subscan)
Output resolution	75, 100, 150, 200, 300, 600, 1200, 2400, 4800, 9600, and 19200 dpi
Image data	16 bits per pixel per color internal 1 to 8 bits per pixel per color external
Interface	USB 2.0
Light source	RGB three color LED
Reliability	18000 cycles of carriage movement (main unit MCBF)
Standards and Approvals	
Safety	UL 1950; EN 60950 (VDE); CSA C22.2 No. 950
EMI	FCC part 15 Subpart B class B; CSA C108.8 Class B

FCC Compliance Statement

For United States Users

This equipment has been tested and found to comply with the limits for a Class B digital device, pursuant to Part 15 of the FCC Rules. These limits are designed to provide reasonable protection against harmful interference in a residential installation. This equipment generates, uses, and can radiate radio frequency energy and, if not installed and used in accordance with the instructions, may cause harmful interference to radio or television reception. However, there is no guarantee that interference will not occur in a particular installation. If this equipment does cause interference to radio and television reception, which can be determined by turning the equipment off and on, the user is encouraged to try to correct the interference by one or more of the following measures:

- Reorient or relocate the receiving antenna.
- Increase the separation between the equipment and receiver.
- Connect the equipment into an outlet on a circuit different from that to which the receiver is connected.
- Consult the dealer or an experienced radio/TV technician for help.

WARNING

The connection of a non-shielded equipment interface cable to this equipment will invalidate the FCC Certification of this device and may cause interference levels which exceed the limits established by the FCC for this equipment. It is the responsibility of the user to obtain and use a shielded equipment interface cable with this device. If this equipment has more than one interface connector, do not leave cables connected to unused interfaces. Changes or modifications not expressly approved by the manufacturer could void the user's authority to operate the equipment.

For Canadian Users

This Class B digital apparatus complies with Canadian ICES-003.

Cet appareil numérique de la classe B est conforme à la norme NMB-003 du Canada.

Declaration of Conformity

According to 47CFR, Part 2 and 15 for Class B Personal Computers and Peripherals; and/or CPU Boards and Power Supplies used with Class B Personal Computers:

We: Epson America, Inc.
Located at: MS: 3-13
3840 Kilroy Airport Way
Long Beach, CA 90806
Telephone: (562) 290-5254

Declare under sole responsibility that the product identified herein, complies with 47CFR Part 2 and 15 of the FCC rules as a Class B digital device. Each product marketed is identical to the representative unit tested and found to be compliant with the standards. Records maintained continue to reflect the equipment being produced can be expected to be within the variation accepted, due to quantity production and testing on a statistical basis as required by 47CFR §2.909. Operation is subject to the following two conditions: (1) this device may not cause harmful interference, and (2) this device must accept any interference received, including interference that may cause undesired operation.

Trade Name: Epson
Type of Product: Ink Jet Printer
Model: B251A

ENERGY STAR Compliance

As an ENERGY STAR® Partner, Epson has determined that this product meets the ENERGY STAR guidelines for energy efficiency. The EPA ENERGY STAR office equipment program is a voluntary partnership with the computer and office equipment industry to promote the introduction of energy-efficient personal computers, monitors, printers, fax machines, and copiers in an effort to reduce air pollution caused by power generation.



Limited Warranty

1. Limited Warranty for Epson Products

Epson products are covered by warranty against defects in workmanship and materials when operated under normal use and handling conditions, as indicated in the product documentation, for the period specified in section “Limited Warranty Coverage”. Coverage begins as of the date of delivery to the purchaser by Epson or by an authorized Epson dealer (see “Epson Subsidiaries and Offices in Latin America”), in the country of purchase.

Epson also guarantees that the consumables (ink cartridges, toner, batteries) included with the product, will perform according to the usage specifications as long as they are used prior to the expiration of their warranty period.

2. Scope of Warranty

Should Epson receive notice of a defect during the warranty period, it may, at its discretion, repair or replace the defective product at no cost to the purchaser. In the event of a replacement, the replaced equipment will become property of Epson. The replaced item may be new or previously repaired to the Epson standard of quality, and will assume the remaining warranty period of the product that was originally purchased.

This warranty does not include any compensation or damages whatsoever, resulting from the operating failures of the Epson product. In any event, Epson’s maximum liability toward the purchaser will be limited to the purchase price paid to Epson or to the authorized dealer.

Epson’s warranty does not cover any software not manufactured by Epson, even when delivered with an Epson product. The software may have a warranty provided by the manufacturer, as indicated in the documentation attached thereto.

3. Limitations and Exclusions

The warranty will be invalid in the following cases:

- 3.1 When the product’s serial number has been removed or altered.
- 3.2 When the product has been misused, has undergone unauthorized modifications, has been used or stored in ways that are not in compliance with the environmental specifications of the product.
- 3.3 When the damage resulted from the use of refilled supplies or consumables, or when damages are the result of use of media that does not meet the product’s specifications.
- 3.4 When damages resulted from the inappropriate transport of the equipment (packaging, installation, maintenance, transportation).
- 3.5 When damages were caused by natural or intentional disasters (fire, floods, lightning, earthquakes, etc.), power surges, or interaction with other brand products.
- 3.6 When the product has been totally or partially disassembled, or has been repaired other than by an Epson Authorized Service Center.
- 3.7 When substances have been spilled on the product.

- 3.8 When the external plastic case has been scratched or abused.
- 3.9 When damages resulted from inappropriate tests, installation, maintenance or adjustments.

The warranty does not extend to accessories (lids, covers, trays) or replenishing supplies and consumables (ink cartridges, toner, ink ribbons, batteries, photosensitive units, knobs, print heads, lamps), which, due to their nature, must be regularly purchased through authorized dealers.

4. How To Obtain Warranty Service

Please refer to the user documentation to ensure that the product settings have been properly set and to perform the diagnostic tests indicated therein. Furthermore, in order for the unit to operate optimally, always use original Epson supplies and consumables.

To obtain warranty service, the purchaser may take the product to any Authorized Epson Service Center, along with proof of purchase, or call any of the Epson Technical Assistance Centers (see country list starting on page 45).

Upon calling an Authorized Epson Service Center, the purchaser will be asked to provide the product model and serial numbers, and may be asked to provide information on the location and the date of purchase (the warranty is only valid in the country of purchase).

If the product warranty includes on-site service assistance, it will be provided on the next working day in the cities where this service is offered by Epson.

If there are no Authorized Service Centers in your area, call the Technical Assistance Center for service referral.

5. Responsibilities of Purchaser

The purchaser is responsible for the safety of all confidential and proprietary information stored on the product, as well as for recovery backup files in case of damage. Any activity related with the re-installation or resetting of the software that was delivered with the equipment, will be billed to the purchaser at the rates in effect at the Epson Service Center. This also applies if the failure was the result of a defect in the purchaser’s proprietary software or of a computer “virus”.

In order to obtain on-site service, the latter will be required to provide: access to the product; an appropriate working area; access to electrical facilities; access to the resources that may be necessary for the installation, repair or maintenance of the unit; a safety environment for Epson staff and their work tools.

6. Limited Warranty Coverage

Product	Model	Coverage	Conditions
Ink jet printer	Epson Stylus	One year	Service center

Technical Support Service

Epson offers technical assistance through electronic and telephone services. Before calling Epson, refer to the documentation included with your product. If you do not find the solution to your problem, visit Epson’s website at: <http://www.latin.epson.com> or call the local Epson office or an authorized dealer.

Service Centers

Country	Telephone number	Web site
Argentina	(54-11) 4346-0300	www.epson.com.ar
Brazil	(55-11) 4196-6350	www.epson.com.br
Chile	(56-2) 230-9500	www.epson.cl
Colombia	(57-1) 523-5000	www.epson.com.co
Costa Rica	(50-6) 210-9555	www.epsoncr.com
Mexico	(52-55) 1323-2052	www.epson.com.mx
Peru	(51-1) 224-2336	www.epson.com
Venezuela	(58 212) 240-1111	www.epson.com.ve

If your country does not appear on the preceding list, please contact the dealer where you purchased the product.

You may receive help or consult information online for all Epson products. Register your Epson equipment on our website, at <http://www.latin.epson.com>.

Extended Warranty Support and Service

In some countries, Epson offers warranty extension services. You may purchase this service by calling the Technical Service Center.

Epson Subsidiaries and Offices in Latin America

Epson Argentina S.A.
Avenida Belgrano 964/970
(1092), Buenos Aires
Tel: (54 11) 4346-0300
Fax: (54 11) 4346-0333

Epson Colombia, Ltda.
Diagonal 109, No. 15-49
Bogotá, Colombia
Tel: (57 1) 523-5000
Fax: (57 1) 523-4180

Epson Perú, S.A.
Av. Del Parque Sur #400
San Isidro, Lima, Perú
Tel: (51 1) 224-2336
Fax: (51 1) 476-4049

Epson do Brasil, Ltda.
Av. Tucunaré, 720
Tamboré Barueri,
São Paulo, SP 06460-020
Tel: (55 11) 4196-6350
Fax: (55 11) 4195-5624

Epson Costa Rica, S.A
Embajada Americana,
200 Sur y 300 Oeste
San José, Costa Rica
Tel: (50 6) 210-9555
Fax: (50 6) 296-6046

Epson Venezuela, S.A.
Calle 4 con Calle 11-1
La Urbina Sur
Caracas, Venezuela
Tel: (58 212) 240-1111
Fax: (58 212) 240-1025

Epson Chile, S.A.
La Concepción 322
Providencia, Santiago
Tel: (56 2) 484-3400
Fax: (56 2) 484-3413

Epson México, S.A. de C.V.
Blvd. Manuel Ávila Camacho 389
Edificio 1 Conjunto Legaria
Col. Irrigación, C.P. 11500
México, DF
Tel: (52 55) 1323-2000
Fax: (52 55) 1323-2183



410132900

CPD-19996
Printed in XXXXXX
XX.XX-XX XXX