

# DRIVELINE

## SECTION 12



# OUTER & INNER PRIMARY COVERS

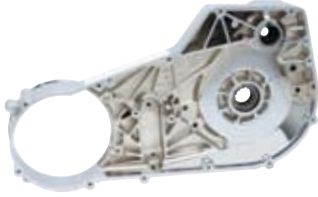
## CHROME OUTER PRIMARY COVER

For Dyna & Softail® models with forward controls.

**P3001** '99-up Softail®, 99-05 Dyna models **OEM 60543-99**

**P3029** '95-later FXST models **Repl. OEM 60543-95**

**P3028** '89-93 FXST models **Repl. OEM 60543-89**



## INNER PRIMARY COVERS FOR SOFTAIL®

**P3007** '94-later **OEM 60630-94**

**P3040** '95-later FXST models **Repl. OEM 60630-94A**

**P3039** '89-93 FXST models **Repl. OEM 60630-90**

**P3042** '71-84 FX models **Repl. OEM 60421-79A**

## ALUMINUM OUTER FOR BIG TWIN

Die cast chrome aluminum cover. This cover is reinforced in all critical areas. Partially drilled 9th hole.

**P5030** '71-84 FX & '84-88 Softail®

**Repl. OEM 60507-77 & 60507-82A**



## ALUMINUM OUTER

Die cast chrome aluminum cover. This cover is reinforced in all critical areas, and has a tab for floorboard mount in front of inspection cover.

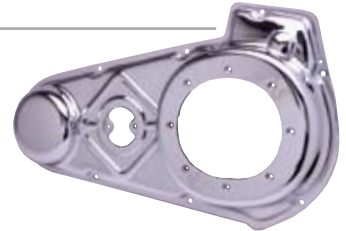
**P5040** '70-84 FL

**Repl. OEM's 60508-70 & 60508-82A**

## TIN CHROME OUTER

Electric start, fits stock inner, w/out bearing.

**P5060** '70-84 Big Twin



## TIN CHROME OUTER FOR BIG TWIN

**P5070** '36-64, with proper inner primary

**Repl. OEM 60505-36**

## TIN CHROME INNER

**P5080** '70-E84 FL-FLH, '71-E84 FX



## TIN CHROME INNER FOR BIG TWIN

**P5010** Early '36-54 models

**Repl. OEM 60620-36**

**P5020** '55-64 models

**Repl. OEM 60505-55**

# PRIMARY ACCESSORIES



## CHROME INNER PRIMARY TRIM COVER

This quality die cast cover provides a much more precise fit, and a classier three dimensional look. Nicely formed edges give this cover a creamy, flowing appearance that enhances the entire primary area. Four mounting points insure secure, quiet operation.

**P3021** Trim cover



## PRIMARY COVER FILLER CAP & CLUTCH HOLE CAP

Chrome plated steel caps have a <sup>15</sup>/<sub>16</sub>" hex to facilitate installation and removal with a standard wrench. Available for:

**E4980** '85-90 XLH Primary Filler Cap & Clutch Adjusting Hole Cap. 2 required per motor

**E4979** '77-84 Sportster® Primary Filler Cap & Clutch Adjusting Hole Cap. 2 required per motor

**E4978** '71-76 Sportster® Clutch Adjusting Hole Cap

**E4977** '71-76 Sportster® Filler Cap Breather



## INNER PRIMARY MOUNTING KITS

Complete hardware kit properly mounts inner primary.

**F4072** '00-up Softail® & '99-up Dyna Glide® & '01-up FLT

**F4073** '86-00 FLT, FXR

**F4051** '94-99 Softail® & '94-98 Dyna Glide®

**F4049** '86-93 Softail® & '91-93 Dyna Glide®

**F4074** '80-85 FL, FX



## INNER PRIMARY WASHERS

**P5159** Washers 5 pack  
OEM 6016



## INNER BUSHING

**P5001** Bushing OEM 33445-89



## STARTER SHAFT BUSHING

**P5003** Bushing OEM 33446-94



## WASHER AND SEAL

**O3248** Late '84-present, 10 pack  
Repl. OEM 31433-84



## STARTER SHAFT BUSHING

**P5002** Bushing OEM 33445-94



## CHROME SIDE COVER

Bag of 100  
**F6141** Washers ¼" I.D., small O.D.  
Repl. OEM 6099



## PRIMARY NEEDLE BEARING

For outer primary, supports starter shaft. Made in the USA.

**E4430** '65-up Big Twin electric start  
Repl. OEM 9063



## OIL TANK ALLEN SCREW SETS

**F4710** '77-up XL Oil Fill & Clutch Adj. Allen Plugs Set with wrench



## CHROME PRIMARY SAVER

This product helps to protect your primary cover around those turns.

**P5160** Fits all Big Twin 4 speed swingarms.

NOVELTY

SEATING

EXHAUST

LIGHTING

ELECTRICAL

CARBURETION

GAS/SPEEDO

OIL

ENGINE

GASKETS

TRANSMISSION

DRIVELINE

BRAKES

FRONT END

CABLES

DRIVE CHASSIS

HARDWARE

## DERBY COVERS



**SKULL WITH FLAMES  
BILLET DERBY COVER**

**P3036** '70-Up Big Twin  
3 Hole Chrome  
**P3037** 5 Hole Chrome



**SKULL DERBY COVER**

**P4035** '70-Up Big Twin  
3 Hole Polished  
**P4036** 5 Hole Polished



**CHROME DERBY COVER  
FOR TWIN CAM**

**P3038** '99-up 5 Hole Domed



**NESS-TECH® RADIUS**

**P3209** 5 hole Chrome



**NESS-TECH® FLAMED**

**P5410** '70-up Big Twin.  
3 hole Chrome



**NESS-TECH® GROOVED**

**P4023** '70-Up Big Twin.  
3 hole Chrome



**LEGENDS SPEED BALL**

**P5021** '70-up Big Twin.  
3 hole Chrome



**MILLENNIUM BALL MILLED**

**P3031** '70-up Big Twin.  
3 hole Chrome



**JAYBRAKE**

3 hole  
**P3255** '70-up Big Twin. Chrome.  
**P3254** '70-up Big Twin. Polished.



**DERBY COVER WASHERS**

**F6177** Wet Clutch Derby Cover  
Nylon 1/4 Washer 80"  
Repl. OEM 31433-84

**DERBY COVER  
BUTTONHEAD ALLENS  
BY GARDNER WESTCOTT**

**F6607** '99-up Twin Cam

# DERBY COVERS



## CHROME PLAIN

**P5270** '70-up Big Twin, 3 Hole  
with out ring groove  
Repl. OEM 25414-70



## CHROME RAISED STYLE

This late style chrome steel derby cover is raised & comes complete with gasket & mounting screws.

**P5280** '70-up Big Twin 3 Hole  
Repl. OEM 25141-70



## CHROME ANTIQUE STYLE

Early style derby cover for early tin primary

**P5260** '36-64 Big Twin  
Repl. OEM 60557-36



## CHROME RACER LOOK

**P3010** '70-up Big Twin 3 Hole

## CHROME ALLEN SCREW SIDE COVER SETS

All high quality polished chrome. All you need to complete the job. American made.  
Cam and Primary Cover Sets Include: Transmission, chain clutch, and derby.

### ALLEN SCREW SIDE COVER SETS BIG TWINS

| PART # | APPLICATION FITMENT                  |
|--------|--------------------------------------|
| F4059  | CAM PRIMARY TRANS 07-UP SOFTTAILS    |
| F4062  | PRIMARY / DERBY 07-UP SFTL / FLT     |
| F4067  | CAM PRIMARY TRANS 07-UP FLT          |
| F4026  | CAM PRIMARY TRANS 2000-06 TWIN CAM   |
| F4028  | CAM PRIMARY TRANS '99-06 FXD         |
| F4027  | CAM PRIMARY TRANS '99-06 FLT TC      |
| F4980  | SIDE COVER SET 1991-98 DYNA GLIDE    |
| F4160  | CAM PRIMARY TRANS 87-99 SOFTTAIL®    |
| F4150  | CAM PRIMARY TRANS '87-98 FLT & FXR   |
| F4170  | CAM PRIMARY TRANS '85-86 FLT & FXR   |
| F4180  | CAM PRIMARY TRANS - '80-84 FLT & FXR |
| F4190  | CAM PRIMARY TRANS - '70-84 FX & FLH  |
| F4930  | CAM PRIMARY INSPECTION '65-69        |
| F4940  | CAM PRIMARY INSPECTION '36-64        |
| F4135  | TRANS MOUNT SET '89-99 SOFTAIL       |
| F4175  | TRANS TOP COVER KIT, '91-98 DYNA     |
| F6141  | 1/4" SIDE COVER WASHERS              |
| F5770  | 3/8" BAG OF 100 CHROMED              |



F4980



F4930



F6122

### ALLEN SCREW SIDE COVER SETS SPORTSTER®

| PART # | APPLICATION FITMENT                         |
|--------|---|
| F6122  | CAM & PRIMARY '91-UP XL                     |
| F4200  | CAM & PRIMARY '86-90 XL                     |
| F4210  | CAM & PRIMARY '77-85 XL                     |
| F4220  | CAM & PRIMARY '71-76 XL                     |
| F6141  | 1/4" SIDE COVER WASHERS, BAG OF 100 CHROMED |

NOVELTY

SEATING

EXHAUST

LIGHTING

ELECTRICAL

CARBURETION

GAS/SPEEDO

OIL

ENGINE

GASKETS

TRANSMISSION

DRIVELINE

BRAKES

FRONT END

CABLES

DRIVE CHASSIS

HARDWARE

## INSPECTION COVERS

All inspection covers without shifter shaft hole fit  
'86-up Softail®, Dyna Wide Glide® & '65-86 FL, FX 4 speed



**SKULL & FLAMES BILLET COVER**  
P3023 Chrome



**SKULL INSPECTION COVER**  
P4037 Polished



**NESS-TECH® RADIUS**  
P3211 Chrome



**NESS-TECH® FLAMED**  
P5411 Chrome



**NESS-TECH® LOUVERED & GROOVED**  
P5416 Louvered Chrome  
P5418 Grooved Chrome



**'71-85 FX**  
P5230 With footpeg and  
shift hole, Chrome.  
Repl. OEM 60579-74



**A.R.T.**  
P3025 Dyna Glide®  
Polished



**PLAIN**  
P5220 Chrome  
Repl. OEM 60572-78



**RACER LOOK**  
P3012 '74-85 FX Chrome



**RACER LOOK**  
P3011 Chrome



**CHROME EARLY STYLE**  
P5210 For Steel Primary  
Repl. OEM 60573-36

# INSPECTION COVERS



**NESS-TECH® FLAMED**  
P5412 '85-94 FXR models  
Chrome



**NESS-TECH® GROOVED**  
P4021 '85-94 FXR models  
Chrome with shifter  
shaft hole not shown  
P4022 FLT Chrome



**LEGENDS SPEEDBALL**  
P5025 FXR, FLT with forward control  
Chrome



**INSPECTION COVER**  
P3026 '85-94 FXR, polished  
P3027 FLT models, polished  
not shown



**RACER LOOK**  
P3014 '85-94 FXR models  
Chrome

NOVELTY

SEATING

EXHAUST

LIGHTING

ELECTRICAL

CARBURETION

GAS/SPEEDO

OIL

ENGINE

GASKETS

TRANSMISSION

DRIVELINE

BRAKES

FRONT END

CABLES

DRIVE  
CHASSIS

HARDWARE

# PRIMARY BELT DRIVE SYSTEMS



## BELT DRIVES LIMITED TOP FUEL DRIVE

BDL's monster all billet Top Fuel Street Drive is ready for action. The 14mm by 85mm wide 3 3/8" belt is the same that the Top Fuel racers use on the 600-plus horsepower machines. The newly designed Kevlar clutch consists of varying spring pressure to accommodate any size motor on the market. The hub is made from 7075 aluminum and then hard-anodized for superior strength. B5058 is the complete drive with outboard bearing support. The outboard support plate is reversible. The back side is channeled for another distinct look with the flat side which is polished.

- B5058** '90-up Softail® 14mm Belt Drive. Complete Kit.  
Includes oil filter mount and side guard.
- B5059** '90-up Softail® 14mm Belt Drive with side guard.  
Includes oil filter mount, side guard, plus a reversible outboard bearing support.
- B5050** Replacement 3 3/8" Belt 85 tooth

## 8MM 3" ELECTRIC START BELT DRIVE SYSTEMS

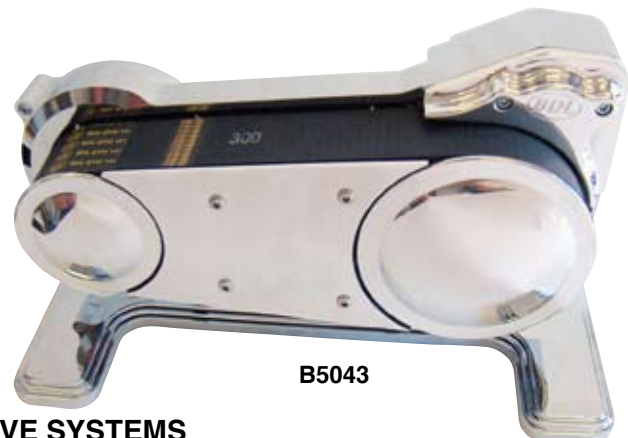
These complete belt drives come with a outboard bearing support.

- B5117** '90-up Softail®
- B5118** '90-up Softail® plate comes with oil filter mount
- B5119** '90-01 Dyna
- B5120** '02-up Dyna
- B5808** Replacement Belt



## POLISHED ALUMINUM DOME SET

- B5053** For 3" Evo electric start belt drives



**B5043**

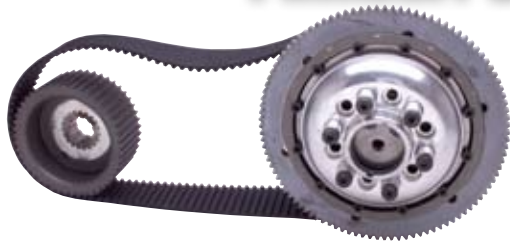
## 8MM 3" ELECTRIC START BELT DRIVE SYSTEMS

The kit contains BDL's race proven clutch pack, special aluminum pressure plate with springs and shoulder bolts. Also includes one piece all aluminum, cast motor plate and starter housing. This plate locks engine and transmission together. Polished moon pulley covers included on EVO belt drive. These models must use 1991 and later stock style starter, and some modifications will be necessary to install these complete kits.

- B5043** '90-97 Softail®, Replacement Belt B5808
- B5121** '90-97 Softail®, with oil filter plate Replacement Belt B5808
- B5042** '85-89 Softail®, Replacement Belt B5808
- B5044** '70-78 Shovelhead, with ratchet tranny lid, Replacement Belt B5810  
Requires removal of OEM oil tank bracket and clearancing of the clutch release arm.  
Use 1979 clutch arm OEM 37054-79.



# PRIMARY BELT DRIVE SYSTEMS



**NOTE:** the drives listed below are high performance drives, clearance to the inner primary will be necessary due to the large diameter of these high performance pulleys.

## 8MM PRIMARY BELT DRIVE SYSTEM FOR EVOLUTION®

BDL kits cover all '86-98 EVO rubber mount 5-speed & 5-speed Softail® models. Complete dry clutch (included) utilizes BARNETT kevlar plates. The inner clutch hub comes with a 40mm double roll bearing as opposed to the 35mm stock single. All this adds up to a cleaner, smoother power delivery system with less vibration, and more horsepower to the rear wheel. Sealed primary bearing included.

- B5005** '94-up 5-speed Softail® 45/68 (splined),  
**Replacement Belt B5112**
- B5004** '94-up rubber mount 5-speed 48/68 (splined),  
**Replacement Belt B5111**
- B5003** '90-93 EVO 5-speed Softail® 45/68 (splined),  
**Replacement Belt B5112**
- B5001** '90-93 EVO rubber mount 5-speed 48/68 (splined),  
**Replacement Belt B5111**
- B5002** '86-89 EVO 5-speed Softail® 47 teeth front, 45/68 (tapered),  
**Replacement Belt B5112**
- B5000** '86-90 EVO rubber mount 5-speed 48/68 (tapered),  
**Replacement Belt B5111**



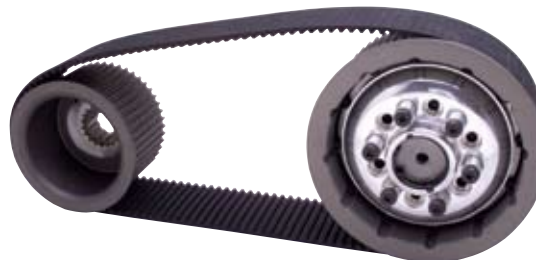
### Replacement Parts

- B5815** Rear Basket. Includes starter gear, dogs and bearing

## 8MM 3" BELT DRIVE SYSTEMS FOR EVOLUTION®

These 3" Belt Drive Systems for EVO motors are for racing applications and cover '84-up Softail® & rubber mount models.

- B5034** '91-up Softail®, splined, kick start, 47/72,  
**Replacement Belt B5808**
- B5036** '91-up rubber mount, splined, kick start, 48/72,  
**Replacement Belt B5809**
- B5033** '84-90 Softail®, tapered, kick start, 47/72,  
**Replacement Belt B5808**
- B5035** '84-90 rubber mount, tapered, kick start, 48/72,  
**Replacement Belt B5809**



## BELT DRIVES LIMITED NEW RETRO FIT KIT

This new billet support plate can be retro fitted to all BDL 3" open 8mm Softail® and Dyna belt drives. This support plate keeps the engine and trans shafts from flexing the plate which is a must for all large engine wide tire applications. The kit includes a polished custom billet support, polished pulley covers, new pressure plate with hardware. Some modifications must be made for fitment.

- B5116** All Softail® & Dyna retro fit kit



NOVELTY

SEATING

EXHAUST

LIGHTING

ELECTRICAL

CARBURETION

GAS/SPEEDO

OIL

ENGINE

GASKETS

TRANSMISSION

DRIVELINE

BRAKES

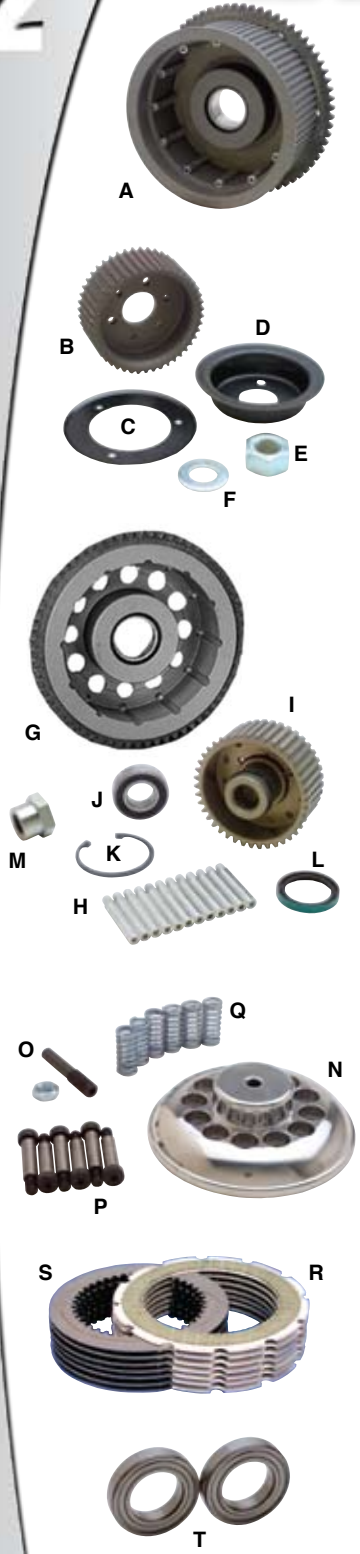
FRONT END

CABLES

DRIVE CHASSIS

HARDWARE

# REPLACEMENT PARTS FOR EVOLUTION®



| Letter | Part# | BDL#      | Description   |
|--------|-------|-----------|---|
|        | B5817 | 47-EV-3E  | 3" front pulley, 47 tooth EVO Softail®                            |
| A      | C2396 | 72-3E     | 3" pulley clutch basket with gear, dogs, & bearing Sft, FXR, Dyna |
|        | B5057 | SG-2PG    | Starter ring gear with pinion gear for all '94-up applications    |
|        | B5028 | SG-2      | Starter ring gear for all '85-93 Big Twins                        |
|        | B5105 | SG-1      | Starter ring gear for all '65-84 Big Twins                        |
|        | B5089 | 48EV      | 1¾" splined front pulley, 48 tooth, rubber mount EVO 8mm          |
|        | B5818 | 48EV-3    | 3" splined front pulley, 48 tooth, EVO                            |
| B      | B5088 | 45EV      | Front pulley 45 tooth Softail®                                    |
| C      | B5085 | EIBG-1    | Inside belt guide for B5088                                       |
| D      | B5086 | EOBG-1    | Outside belt guide for B5088                                      |
| E      | B5375 | FHN-2     | Flat hex engine nut for splined shaft                             |
| F      | B5376 | WA-2      | Flat washer for splined engine nut shaft                          |
|        | B5373 | FHN-1     | Flat hex engine nut for tapered shaft                             |
|        | B5374 | WA-1      | Flat washer for tapered engine nut shaft                          |
| G      | B5815 | EV-475    | Rear basket, Softail®, FXR & Shovelhead 5 speed                   |
| H      | C2386 | EVRD-1    | Round dogs Softail®, FXR, & Shovelhead 5 speed. 12 pcs.           |
| I      | B5081 | EV-180    | Splined hub for '90-up 3" open & closed drives                    |
|        | B5029 | EV-170    | Tapered hub for '86-89  |
| J      | B5107 | EPB-100   | Primary Bearing '86-up EVO  |
| K      | B5087 | CC-244    | C-clip hub bearing retainer                                       |
|        | B5122 | CC-158    | C-clip for backside of hub  |
| L      | B5104 | EPS-100   | Seal - inner clutch hub '86-up EVO                                |
|        | B5824 | 68S       | '91-up E/S splined 68 tooth rear pulley                           |
| M      | B5814 | HNS-100   | Hub nut with seal '90-up  |
|        | B5823 | 68T       | '86-90 EVO-tapered 68 tooth rear pulley                           |
|        | B5079 | 72S-3     | Rear basket hub & bearing 72 tooth splined '91-up Big Twin        |
|        | B5080 | 72T-3     | Rear basket hub & bearing 72 tooth tapered '84-90 Big Twin        |
| N      | C2393 | EPP-100   | Pressure Plate  |
| O      | C2399 | CDAS-100  | Clutch adjusting screw with jam nut                               |
| P      | B5026 | ESB-100   | Shoulder bolts, long, set of 6                                    |
| Q      | B5103 | ECS-100   | Clutch springs, set of 6  |
|        | C2394 | EDP-200   | Splined clutch steel plate for inner hub - sold each              |
|        | C2389 | ERDS-100  | Steel clutch plate for round clutch dogs - sold each              |
|        | C2390 | EDP-100   | Steel clutch plate for square clutch dogs - sold each             |
|        | C2391 | ECP-200   | Clutch plate, kevlar - sold each - 4 needed                       |
|        | C2392 | ECP-100   | Clutch half plate, kevlar - sold each - 2 needed                  |
| R      | C2397 | ERCPC-100 | Kevlar clutch fiber plates - Set of 7                             |
| S      | C2398 | ERCS-100  | Clutch steel plates - Set of 7                                    |
|        | C2918 | CHDK-1    | Clutch hub friction plate   |
|        | B5083 | CC-193    | C-clip for motor plate bearing                                    |
|        | C3609 | BF-1      | Clutch hub bearing kit  |
| T      | B5027 | TFBSB-100 | Bearings for outboard support - pair                              |

| Insert & Special Nut<br>For Offset Front Pulley |            |
|---|------------|
| B5826 ¼"  | B5830 1 ¼" |
| B5827 ½"  | B5831 1 ½" |
| B5828 ¾"  | B5832 1 ¾" |
| B5829 1"  | B5833 2"   |

**OFFSET FRONT PULLEY**  
**B5084** 3" - 47 tooth pulley for Softail®

To order pulleys and insert/nut together, ask your sales rep.

# PRIMARY BELT DRIVE SYSTEMS

## 11MM PRIMARY BELT DRIVE SYSTEM FOR KICKER OR ELECTRIC START

These American made belt drive kits include front & rear pulleys, washer and nut for front pulley and primary idler/adjuster (on GS-up) use in conjunction with proper safety hardware.

- B5010** '37-54 adj. trans. kick start, 31/47 front tapered..... **Replacement Belt B5061**
- B5011** '55-64 adj. trans. kick start, 31/47 front splined..... **Replacement Belt B5061**
- B5012** '65-84 alum. primary, kick start with idler, 31/47 front splined..... **Replacement Belt B5061**
- B5013** '65-84 alum. primary, electric start with idler, 31/47 front splined..... **Replacement Belt B5061**
- B5014** '79-84 rear, 5-speed electric start with idler, 31/47 front splined..... **Replacement Belt B5062**

## 8MM CLOSED PRIMARY ELECTRIC START

Belt drive kits include belt, front & rear pulleys, washer & nut for the front pulley and outside guide where necessary. For use in conjunction with proper safety hardware.

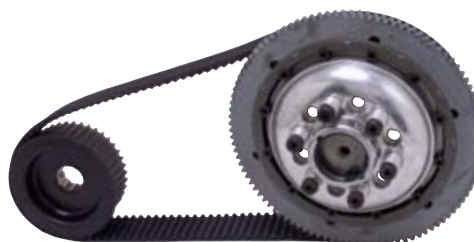
- B5015** '65-78, 1 1/2" belt, 41/61 teeth front splined rear chain drive  
**Replacement Belt B5190**
- B5016** '79-84, 1 1/2" belt, 41/61 teeth front splined rear chain drive will not fit 5-speed transmission  
**Replacement Belt B5200**
- B5045** '79-84 rear belt drive 1 1/2" belt, 41/61 FXSB, FXB  
**Replacement Belt B5200**



## 8MM CLOSED PRIMARY ELECTRIC START

These 8mm belt drive kits include Kevlar belt, front & rear pulleys, washer & nut for the front pulley and stacked clutch.

- B5032** '65-83 rear chain drive with 45/68 EVO style stacked clutch  
**Replacement Belt B5112**
- B5039** '79-83 rear chain drive with 48/68 5 speed with stacked clutch  
**Replacement Belt B5111**
- B5041** '79-84 rear belt drive with 45/68 4 speed with stacked clutch  
**Replacement Belt B5112**



## 8MM CLOSED PRIMARY KICK START

These belt drive kits include belt, front and rear pulleys, washer and nut for the front pulley. Use only in conjunction with proper safety hardware.

- B5017** '37-54 1 1/2" belt, 39/62 front tapered  
**Replacement Belt B5200**
- B5018** '55-64 1 1/2" belt, 39/62 front splined  
**Replacement Belt B5200**
- B5019** '65-77 1 1/2" belt, 40/62 front splined  
**Replacement Belt B5200**
- B5020** '78-84 1 1/2" belt, 41/61 front splined  
**Replacement Belt B5200**



### 11MM SYSTEM

- B5074** Repl. 11mm rear pulley kick start 47 T
- B5075** Repl. 11mm rear pulley electric start 47 T
- B5091** Repl. 11mm front pulley tapered 31 T
- B5092** Repl. 11mm front pulley splined 31 T
- B5105** '65-84 Starter ring gear electric start

### REPLACEMENT PARTS

#### 8MM CLOSED ELECTRIC

- B5073** Rear pulley, 61 T electric start
- B5816** Rear pulley 68 T
- B5819** Front pulley 45 T splined
- B5093** Front pulley 41 T splined

#### 8MM CLOSED KICK

- B5072** '37-77 Rear pulley, 62 T
- B5071** '78-84 Rear pulley, 61 T
- B5094** '37-54 Front pulley, 39 T tapered
- B5095** '55-64 Front pulley, 39 T splined
- B5096** '65-77 Front pulley, 40 T splined
- B5093** '78-84 Front pulley, 41 T splined

NOVELTY

SEATING

EXHAUST

LIGHTING

ELECTRICAL

CARBURETION

GAS/SPEEDO

OIL

ENGINE

GASKETS

TRANSMISSION

DRIVELINE

BRAKES

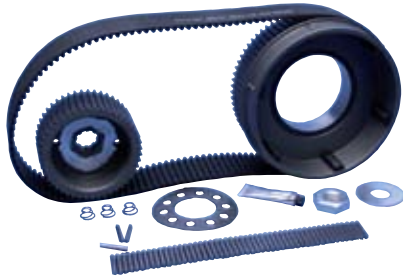
FRONT END

CABLES

DRIVE CHASSIS

HARDWARE

## 2" & 3" BELT DRIVE SYSTEMS



Bearing kit included.

### 8MM OPEN PRIMARY KICK START 2" BELT

These belt drive kits include belt, front & rear pulleys, washer & nut for the front pulley. Use in conjunction with proper safety hardware.

- B5021** '37-54 2" belt, 47/76 front tapered  
**Replacement Belt B5110**
- B5022** '55-84 2" belt, 47/76 front splined  
**Replacement Belt B5110**

### 8MM OPEN PRIMARY KICK START 3" BELT

These belt drive kits include belt, front & rear pulleys, washer & nut for the front pulley.

**Note:** 3" Belt Drive Kits are intended for racing applications only.

- B5023** '37-54, 47/76 front tapered  
**Replacement Belt B5810**
- B5024** '55-84, 47/76 front splined  
**Replacement Belt B5810**



### 8MM OPEN PRIMARY KICK START 3" BELT WITH STACKED CLUTCH



- B5040** '65-84 47/72 teeth splined with Evo style stacked clutch  
**Replacement Belt B5808**
- B5037** '37-54 47/76 teeth tapered with stacked clutch  
**Replacement Belt B5810**
- B5038** '55-84 47/76 teeth splined with stacked clutch  
**Replacement Belt B5810**

### RETRO FIT CLUTCH FOR 3" FOUR SPEED BELT DRIVES

This complete clutch package is designed to move the weight in-board over the bearing to eliminate the gyro effect of the stock or early style hub. This kit fits all 3" belt drive '36-83. To be used with existing 3" front pulley and belt.

- B5078** Retro fit kit



## REPLACEMENT PARTS

### 8MM OPEN 2" KICK

- B5076** '37-84 Rear pulley, 76 T 2"
- B5097** '37-54 Front pulley, 47 T, tapered
- B5098** '55-84 Front pulley, 47 T, splined
- B5101** Front pulley nut & washer kit

### 8MM OPEN 3" KICK

- B5077** '37-84 Rear pulley, 76 T 3"
- B5099** '37-54 Front pulley, 47 T 3" tapered
- B5100** '55-84 Front pulley, 47 T 3" splined



# REPLACEMENT BELTS



**PRIMARY BELT QUICK REFERENCE CHART**

| WIN PART# | BELT NUMBER          | MM   | WIDTH  | NUMBER OF TEETH |
|-----------|----------------------|------|--------|-----------------|
| B5930     | 38078                | 14MM | 1 1/2" | 78              |
| B5050     | BDL-14-85            | 14MM | 3 3/8" | 85              |
| B5062     | 5S11                 | 11MM | 1 1/2" | 92              |
| B5060     | 30884                | 11MM | 1 1/2" | 96              |
| B5061     | 1185                 | 11MM | 1 1/2" | 99              |
| B5370     | 37117-1              | 8MM  | 1 1/2" | 117             |
| B5420     | 9608M 1-1/2 FOR 45'S | 8MM  | 1 1/2" | 120             |
| B5111     | BDL-130              | 8MM  | 1 1/2" | 130             |
| B5190     | 30853-ST             | 8MM  | 1 1/2" | 132             |
| B5200     | 30853-BE BULLS EYE   | 8MM  | 1 1/2" | 132             |
| B5046     | BDL-132-15/8         | 8MM  | 1 5/8" | 132             |
| B5030     | BDL-132              | 8MM  | 1 3/4" | 132             |
| B5809     | BDL-132-3            | 8MM  | 3"     | 132             |
| B5112     | BDL-138              | 8MM  | 1 1/2" | 138             |
| B5047     | BDL-141-15/8         | 8MM  | 1 5/8" | 141             |
| B5031     | BDL-141              | 8MM  | 1 3/4" | 141             |
| B5808     | BDL-141-3            | 8MM  | 3"     | 141             |
| B5180     | BDL-37144-1          | 8MM  | 1 1/2" | 144             |
| B5110     | BDL-37144-2          | 8MM  | 2"     | 144             |
| B5810     | BDL-37144-3          | 8MM  | 3"     | 144             |



**REPLACEMENT FINAL DRIVE BELT**

| DAYCO PANTHER 14MM BELT | GATES 14MM POLY BELT | APPLICATION STOCK BELTS ARE 1 1/2" | O.E.M.    | NUMBER OF TEETH |
|-------------------------|----------------------|------------------------------------|-----------|-----------------|
| B5803                   | B5800                | '80-86 FXB, FXSB, FXWG, FLH        | 40003-79  | 126             |
| B5804                   | —                    | CUSTOM APPLICATION                 |           | 127             |
| B5820                   | B5052                | '91-UP SPORTSTER®                  | 40022-91  | 128             |
| B5821                   | B5048                | '93 SOFTAIL®                       | 40012-90  | 128             |
| B5822                   | B5049                | '95-UP SOFTAIL®                    | 40017-94  | 130             |
|                         | B5935                | CUSTOM APPLICATION 1 1/8"          |           | 130             |
| B5805                   | B5801                | '86-92 & '94 SOFTAIL®              | 40023-86V | 132             |
|                         | B5936                | CUSTOM APPLICATION 1 1/8"          |           | 132             |
| B5811                   | B5051                | '91-UP DYNA                        | 40015-90  | 133             |
|                         | B5932                | CUSTOM APPLICATION 1 1/8"          | 40015-00  | 133             |
|                         | B5931                | CUSTOM APPLICATION 1 1/8"          | 40307-00  | 135             |
| B5807                   | —                    | CUSTOM APPLICATION                 |           | 135             |
| B5806                   | B5802                | '85-96 FLT '85-94 FXR              | 40001-85  | 136             |
|                         | B5937                | CUSTOM APPLICATION 1 1/8"          |           | 136             |
|                         | B5933                | '97-UP FLT, FLHT, FLHTR, FLHR      | 40024-97  | 139             |
|                         | B5934                | 00-UP FLT, FLHT 1 1/8"             |           | 139             |

NOVELTY

SEATING

EXHAUST

LIGHTING

ELECTRICAL

CARBURETION

GAS/SPEEDO

OIL

ENGINE

GASKETS

TRANSMISSION

DRIVELINE

BRAKES

FRONT END

CABLES

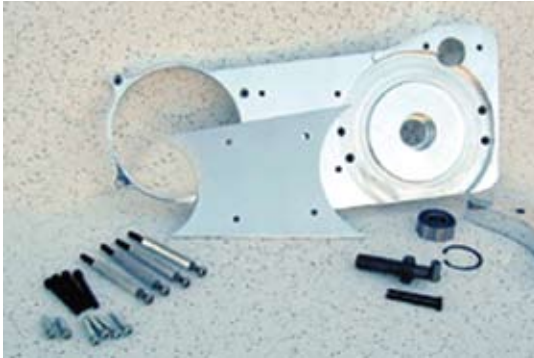
DRIVE CHASSIS

HARDWARE

## WIDE & PRIMARY CHAIN DRIVE KITS

### WIDE DRIVE KITS FOR 3" ELECTRIC START

Wide drive kits come with everything pictured, including offset front pulley and primary spacer.



#### 3" WIDE DRIVE KITS

'90-up Softail® only.

**B5006** 3" kit with 1/4" offset

**B5007** 3" kit with 1/2" offset

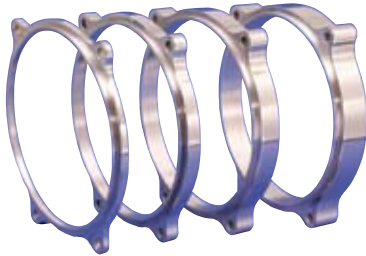


#### 3" WIDE DRIVE KITS

Uses B5808 Belt on page 12-13

**B5008** 3" kit with 3/4" offset

**B5009** 3" kit with 1.0" offset



#### PRIMARY SPACERS

|              |      |              |        |
|--------------|------|--------------|--------|
| <b>B5070</b> | 1/4" | <b>B5113</b> | 1 1/4" |
| <b>B5102</b> | 1/2" | <b>B5106</b> | 1 1/2" |
| <b>B5108</b> | 3/4" | <b>B5114</b> | 1 3/4" |
| <b>B5109</b> | 1"   | <b>B5115</b> | 2"     |



P5004



P5005

#### STARTER PINION GEAR 9 TOOTH

Will fit all Softail®, FXR & Dyna's for use on BDL 3" Belt Drives with 66 tooth ring gear. '90-06

**P5004** 9 tooth starter pinion gear

**P5005** +1" 9 tooth starter pinion gear

#### PRIMARY CHAIN DRIVES

Includes 25 tooth compensator

**C1961** '90-up electric start this kit comes with starter pinion gear for use on '94-up

**C1962** '86-89 electric start

**C1963** '70-83 electric start



#### DIAMOND PRIMARY CHAIN

**C1960** '36-up Diamond Big Twin 4 speed, all Softail® & Dyna Glide® 428-2-82 pitch  
Repl. OEM 40007-36A

**C1970** '57-up Diamond Sportster®, size 35-3-94 pitch  
Repl. OEM 40005-57

**C1980** '79-up Diamond all Big Twin 5 speed, 428-2-76 pitch.  
Repl. OEM 40037-79



#### PRIMARY DRIVE KIT

This kit includes the primary chain, chain tensioner, compensation sprocket and all necessary hardware.

**P3041** '94-later Softail® & Dyna models.

OEM 40035-00

# BILLET COVERS & CHAIN TENSIONERS

## 3" ELECTRIC START BILLET COVERS

These chrome billet covers fit our 3" Softail® and Dyna electric start kits



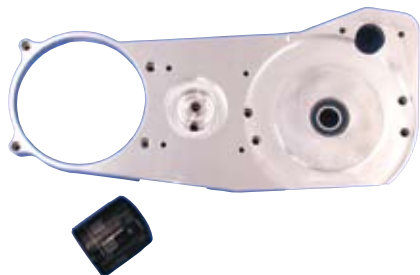
**B5054** Billet cover 2 Dome



**B5055** Billet cover 1 Dome



**B5056** Billet cover No Dome



## MOTOR PLATE & OIL FILTER KIT FOR SOFTAIL

BDL offers a motor plate for softails that will accommodate the oil filter in the center of the plate, the side guard can still be used without interference. Kit includes oil filter, fittings, oil line & clamps.

**O3246** '90-up Motor plate and filter

**B5082** Motor plate bearing all Big Twins



## PRIMARY IDLER BEARING KIT

This kit includes bearing and serrated plate which attaches to the larger serrated plate found inside the inner primary. This bearing assures correct belt tensioning by improving the wrap of the belt teeth on both pulleys.

**B5025** Idler Bearing Kit



## CHAIN TENSIONER PARTS

**P5130** Chain Tensioner  
Repl. OEM 39990-65

**P5131** Adjuster nut

**P5140** Chain Tensioner  
Anchor Plate  
Repl. OEM 39998-65

**P5132** Chain tensioner  
replacement shoe  
Repl. OEM 39976-65B



## HYDRAULIC AUTOMATIC CHAIN TENSIONER

This new automatic chain tensioner uses the oil in the primary as its own reservoir. It has its own pump & operates like a hydraulic lifter in the engine. Once you install it there is no need to adjust the primary chain again.

**P5133** Hydraulic Automatic Chain Tensioner

NOVELTY

SEATING

EXHAUST

LIGHTING

ELECTRICAL

CARBURETION

GAS/SPEEDO

OIL

ENGINE

GASKETS

TRANSMISSION

DRIVELINE

BRAKES

FRONT END

CABLES

DRIVE CHASSIS

HARDWARE

## REAR CHAINS & PRIMARY

| 110   | 112   | 120   | DIAMOND CHAIN | MASTER LINKS |
|-------|-------|-------|---------------|--------------|
| C1730 | C1740 | C1741 | STANDARD      | C1940        |
| C1742 | C1743 | C1744 | XDL DUROLUBE  | C1745        |
| C1746 | C1747 | C1748 | XLO O-RING    | C1749        |



| 110   | 112   | 120   | RK CHAIN   | MASTER LINKS |
|-------|-------|-------|------------|--------------|
| C1290 | C1300 | N/A   | HEAVY DUTY | C1380        |
| C1350 | C1360 | C1370 | O-RING     | N/A          |

| SUPER LINKS HEAVY-DUTY CHAIN |        |  |        |              |
|------------------------------|--------|--|--------|--------------|
| PART #                       | LENGTH |  | PART # | LENGTH       |
| C1600                        | 100    |  | C1605  | 110          |
| C1601                        | 102    |  | C1606  | 112          |
| C1602                        | 104    |  | C1607  | 120          |
| C1603                        | 106    |  | C1608  | MASTER LINKS |
| C1604                        | 108    |  |        |              |



### DIAMOND PRIMARY CHAIN

- C1960** '36-up Diamond Big Twin 4 speed, all Softail® & Dyna Glide® 428-2-82 pitch **Repl. OEM 40007-36A**
- C1970** '57-up Diamond Spst size 35-3-94 pitch **Repl. OEM 40005-57vv**
- C1980** '79-up Diamond all Big Twin 5 speed size 428-2-76 pitch **Repl. OEM 40037-79**

### HEAVY DUTY CHAIN LUBE

All-purpose chain lube excellent for street, touring & off-road applications. Thick, tacky formula eliminates messy fly off & stops chain rust.

- C1009** 6.8 oz. can sold each
- C1060** 6.8 oz. can 12/case
- C1011** 17.4 oz. can sold each
- C1070** 17.4 oz. can 6/case



### HEAVY-DUTY CHAIN BREAKER

Use on all 420 to 630 size chain.  
**T3521** Chain breaker



# BALANCER PRODUCTS

## BALANCE MASTERS™ ACTIVE ENGINE BALANCING

Patented Active Balancing Technology is utilized to constantly adjust to changes in the vehicle including engine and tire wear as well as speed changes. No wheel weights or expensive close tolerance engine balancing are required. Just using a combination of Balance Masters one on each wheel, one on the clutch and another on the crank or compensator virtually eliminates vibration permanently with no need to ever balance again! Your engine will last significantly longer, run smoother and produce additional horsepower. Plus, vibration will no longer rattle your body parts, blur your mirrors or cause parts to shake off.

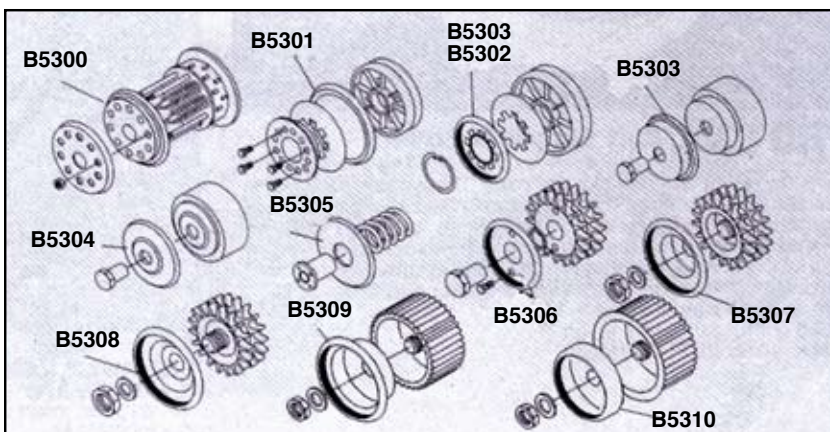
| BALANCERS FOR BIG TWIN           |                               |
|----------------------------------|-------------------------------|
| COMPENSATOR front                | CLUTCH rear                   |
| B5304 '91-up                     | B5330 '98-up                  |
| B5303 '70-90                     | B5302 '90-97                  |
| B5305 '37-69                     | B5301 '84-89                  |
| B5308 straight sprocket no comp. | B5300 3 & 5 finger hub '41-84 |

| BALANCERS FOR SPORTSTER® |               |
|--------------------------|---------------|
| SPROCKET front           | CLUTCH rear   |
| B5307 '91-up             | B5302 '91-up  |
| B5306 '60-90             | B5316 L'84-90 |
|                          | B5315 '71-E84 |

| BALANCERS FOR BELT DRIVES                         |  |
|---|--|
| FRONT PULLEY                                      | REAR PULLEY CLUTCH   |
| B5309 fits 1 1/2 Primo                            | B5331 Fits all BDL   |
| B5310 Fits all BDL, Primo 2" & 3" Primo Brute III | B5332 Fits Primo Brute III, Also Rivera's Pro-Clutch models PC-1000, PC-1100 and PC-1200 |

| BALANCER SET FOR BDL 1 3/4 EVO BELT DRIVE |
|---|
| B5321 Includes front & rear balancer      |

| BALANCERS FOR WHEEL ASSEMBLY    |  |
|---------------------------------|--|
| B5317 Dual Flange Wheels '73-up |  |
| B5320 '78-83 Wheels             |  |
| B5318 9 or 10 Spoke Cast Wheels |  |
| B5319 Star Hubs '36-72          |  |



B5304



B5330



B5307



B5309



B5317



B5302

NOVELTY

SEATING

EXHAUST

LIGHTING

ELECTRICAL

CARBURETION

GAS/SPEEDO

OIL

ENGINE

GASKETS

TRANSMISSION

DRIVELINE

BRAKES

FRONT END

CABLES

DRIVE CHASSIS

HARDWARE

## SPROCKETS, NUTS, & BALANCERS



### COMPENSATING SPROCKET

For Softail® '94-up

**S4235** 25 T Repl. OEM 40308-94

For Big Twins '70-85

**S4214** 23 T Repl. OEM 40282-70

**S4215** 24 T Repl. OEM 40275-70

### COMPENSATING SPROCKET KIT

These kits include compensating sprocket nut, retainer and spring assembly, sliding cam for compensating sprocket, compensating sprocket and crankshaft extension. 25 tooth.

**S4206** '94 & later models

Repl. OEM 40308-94



### SLIDING CAM

**S4265** '84-up

Repl. OEM 40299-83A

### SPROCKET SHAFT EXTENSIONS

For '91-up Softail & Dyna, '85-up FLT, '85-94 FXR

**S4261** Stock length Repl. OEM 40266-85

**S4258** 1/2" over stock

**S4259** 1" over stock



### SPLINED MOTOR SPROCKET

For Big Twins '55-84

**S4210** 22 T Repl. OEM 40209-55

**S4211** 23 T Repl. OEM 40210-55

**S4212** 24 T Repl. OEM 40211-55

**S4213** 25 T Repl. OEM 40212-55



### TAPER MOTOR SPROCKET

For Big Twins '36-54

**S4207** 22 T Repl. OEM 40209-36

**S4208** 23 T Repl. OEM 40210-36

**S4209** 24 T Repl. OEM 40211-36



### MOTOR SPROCKET

For Sportster®

**S4232** '57-69 XL 34 T Repl. OEM 40288-58

**S4233** '70-76 XL 34 T Repl. OEM 40235-70A

**S4234** '77-91 XL 34 T Repl. OEM 40235-74

### BALANCE MASTERS COMPENSATOR

These Gold & Silver Eagle compensators from Balance Masters are the only compensators engineered to incorporate Active Balancing Technology. They are also the lightest and strongest compensators ever designed.

**B5324** '91-up Big Twin Silver Eagle

**B5323** '70-82 Big Twin Gold Eagle



### MOTOR SPROCKET NUTS

For '91-up

**S4264** Stock length

Repl. OEM 40392-91

**S4263** 1/2" over stock

**S4262** 1" over stock



### MOTOR SPROCKET NUT BY PAUGHCO

**E6515** '84-89, sold each



**F6342**



**F6344**

### MOTOR SPROCKET NUTS BY COLONY

**F6342** '30-54 Big Twins Original style

**F6343** '55-up Big Twins Original style

**F6344** '36-54 Big Twins Acorn style

**F6345** '57-up Sportster® Acorn style

# TRANSMISSION PULLEYS & SPROCKETS

## BDL TRANSMISSION PULLEY FOR BELT DRIVE

These lightweight pulleys are about 1/3 the weight of stock pulleys. This means extended life of the fifth gear bearing and more horsepower to the rear wheel.

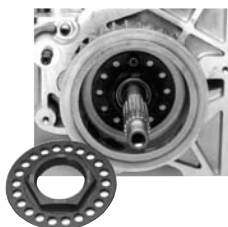
- |                     |                                |              |             |
|---------------------|--------------------------------|--------------|-------------|
| <b>B5064</b>        | 29 T Pulley                    | <b>B5067</b> | 32 T Pulley |
| <b>B5065</b>        | 30 T Pulley                    | <b>B5068</b> | 33 T Pulley |
| <b>B5066</b>        | 31 T Pulley                    | <b>B5069</b> | 34 T Pulley |
| <b>T5038</b>        | 32T Trans Sproket Upgrade kit. |              |             |
| <b>OEM 40210-85</b> |                                |              |             |



## TRANSMISSION SPROCKET NUT

Use on Big Twin '36-up 1 1/2" - 24 thread

- E3036** Sprocket nut  
Repl. OEM 35211-91A



## MEGA NUT

The JIMS® Mega Nut has a lock plate built in. The Mega Nut can also be secured in several additional places by an easy drilling and tapping operation.

- T4668** '85-present Big Twin and XL, with belt drive. Twin cam 88® and JIMS® 6 speed.

Repl. OEM 35211-91



## OFFSET SPROCKET KIT

For Softail® And FXR This offset sprocket converts belt drive to chain drive. Kit includes offset sprocket and spacer. Fits '86-up Softail®, '85-94 FXR

- S4224** 24 T                      **S4260** 23 T



## OFFSET MOTOR SPROCKET

- S4245** 1/2" 25 tooth  
**S4248** 3/4" 25 tooth  
**S4256** 1" 25 tooth



## TRANSMISSION SPROCKETS FOR BIG TWINS & SPORTSTER®

| TRANSMISSION SPROCKET FOR BIG TWIN |       |                     |
|------------------------------------|-------|---------------------|
| FL, FX '80-85                      |       |                     |
| PART #                             | TEETH | REPL. OEM           |
| S4218                              | 22 T  | 33338-83 & 35203-80 |
| S4219                              | 23 T  | 33337-83 & 35212-80 |
| S4220                              | 24 T  |                     |
| FLT, FXR '80-84                    |       |                     |
| S4221                              | 22 T  | 33336-83            |
| S4222                              | 23 T  | 33333-79            |
| S4223                              | 24 T  |                     |
| FL, FX '36-79                      |       |                     |
| S4216                              | 22 T  |                     |
| S4217                              | 23 T  |                     |
| S5010                              | 24 T  |                     |
| S5020                              | 25 T  |                     |

| TRANSMISSION SPROCKET FOR SPORTSTER® |       |           |
|--------------------------------------|-------|-----------|
| L84-90                               |       |           |
| PART #                               | TEETH | REPL. OEM |
| S4229                                | 21 T  | 35208-84  |
| S4230                                | 22 T  |           |
| S4231                                | 23 T  | 35205-84  |
| L79-E84                              |       |           |
| S4227                                | 22 T  |           |
| S4228                                | 23 T  |           |
| S4253                                | 21 T  |           |
| '52-E79                              |       |           |
| S4225                                | 21 T  | 35205-52A |
| S4226                                | 24 T  |           |



BIG TWIN



SPORTSTER®



## SPROCKET COVER

Die cast polished aluminum sprocket cover.

- S4205** '81-90 Sportster®  
Repl. OEM 34911-81

NOVELTY

SEATING

EXHAUST

LIGHTING

ELECTRICAL

CARBURETION

GAS/SPEEDO

OIL

ENGINE

GASKETS

TRANSMISSION

DRIVELINE

BRAKES

FRONT END

CABLES

DRIVE CHASSIS

HARDWARE

**REAR SPROCKETS****FLAT REAR SPROCKETS FOR '82-85 XL**

S4246 48T Chrome Repl. OEM 41470-82

**DISHED REAR SPROCKETS FOR '82-85 FXR, FXRS WITH CHAIN REAR DRIVE**S5090 48T Chrome  
Repl. OEM 40954-81S4255 51T Chrome  
Repl. OEM 40954-83**FLAT REAR SPROCKETS FOR '86-92 XL**

S4250 48T Chrome Repl. OEM 41470-86

S4251 49T Chrome

**DISHED REAR SPROCKETS FOR '79-81 XL**

S4243 48T Chrome

S5060 49T Chrome

S5050 51T Chrome Repl. OEM 41470-73

**DISHED REAR SPROCKETS FOR '73-85 FL, FX**

S4243 48T Chrome

S5060 49T Chrome

S5050 51T Chrome Repl. OEM 41470-78

**51T REAR BRAKE DRUM SPROCKETS FOR '30-72 FL, FX, XL**

Comes complete with rivets and dowel pins

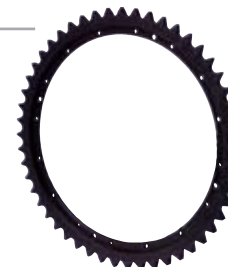
S5080 '30-57 FL '57-78 XL Repl. OEM 41470-30

S4236 '62-66 FL Repl. OEM 41470-62

S4237 '67-72 FL/FX Repl. OEM 41470-67

Replacement rivet &amp; dowel pin sets

S4239 '67-72 FL, FX



# WHEEL, PULLEY & ROTOR DESIGNS

Please see the following pages for our huge selection of matching wheels, pulleys and rotors. This great line of wheels, etc. are precision CNC machined made in the USA by people who take pride in their workmanship and the quality that they produce. They come with a beautifully polished finish complete with hub and a Timken bearing kit ready to bolt on.

Great designs! Great workmanship! Excellent quality which means big sales!



**3 SPOKE BACK CUT #1**



**3 SPOKE DOUBLE CUT #4**



**SOLID #7**



**15 SPOKE #9**



**5 STAR #10**



**BALLZAK #12**



**SPADE #13**



**RHINO #14**



**10 SPOKE #18**

NOVELTY

SEATING

EXHAUST

LIGHTING

ELECTRICAL

CARBURETION

GAS/SPEEDO

OIL

ENGINE

GASKETS

TRANSMISSION

DRIVELINE

BRAKES

FRONT END

CABLES

DRIVE CHASSIS

HARDWARE

## FRONT WHEELS

All front wheels shown here have matching rear wheels on page 12-24.



All wheels front & rear can be special ordered in chrome. Chrome wheels are forged. Ask your sales rep for all the details.

| FRONT WHEELS 2000-UP SOFTAIL®, ROAD KING®, FAT BOY®, HERITAGE, DEUCE, BIG TWINS & SPORTSTER® |                     |                       |             |            |             |            |           |              |
|--|---------------------|-----------------------|-------------|------------|-------------|------------|-----------|--------------|
| POLISHED SIZE  | 3 SPOKE BACK CUT #1 | 3 SPOKE DOUBLE CUT #4 | 15 SPOKE #9 | 5 STAR #10 | BALLZAK #12 | SPADES #13 | RHINO #14 | 10 SPOKE #18 |
| 19 x 2.15<br>Dyna Narrow Glide®<br>XL Single Disc  | W3403               | W3420                 | W3437       | W3454      | W3471       | W3488      | W3506     | W3523        |
| 21 x 2.15<br>Dyna Narrow Glide®<br>XL Single Disc  | W3404               | W3421                 | W3438       | W3455      | W3472       | W3489      | W3507     | W3524        |
| 21 x 3.25<br>Dyna Narrow ® XL<br>Single Disc   | W3405               | W3422                 | W3439       | W3456      | W3473       | W3490      | W3508     | W3525        |
| 19 x 2.15<br>Narrow Glide® Dual<br>Disc  | W3406               | W3423                 | W3440       | W3457      | W3474       | W3491      | W3509     | W3526        |
| 21 x 2.15<br>Narrow Glide® Dual<br>Disc  | W3407               | W3424                 | W3441       | W3458      | W3475       | W3492      | W3510     | W3527        |
| 21 x 3.25<br>Narrow Glide® Dual<br>Disc  | W3408               | W3425                 | W3442       | W3459      | W3476       | W3493      | W3511     | W3528        |
| 16 x 3<br>Wide Glide® Single<br>Disc Left Side   | W3409               | W3426                 | W3443       | W3460      | W3477       | W3494      | W3512     | W3529        |
| 18 x 3.50<br>Wide Glide® Single<br>Disc Left Side  | W3410               | W3427                 | W3444       | W3461      | W3478       | W3495      | W3513     | W3530        |
| 21 x 2.15<br>Wide Glide® FXST/C<br>Duece Single Disc<br>Left Side                            | W3411               | W3428                 | W3445       | W3462      | W3479       | W3496      | W3514     | W3531        |
| 21 x 2.15<br>Stock Springer®<br>Single Disc  | W3412               | W3429                 | W3446       | W3463      | W3480       | W3497      | W3515     | W3532        |
| 21 x 3.25<br>Wide Glide® Single<br>Disc Left Side  | W3413               | W3430                 | W3447       | W3464      | W3481       | W3498      | W3516     | W3533        |
| 16 x 3<br>Wide Glide®<br>Road King®<br>Dresser Dual Disc                                     | W3414               | W3431                 | W3448       | W3465      | W3482       | W3499      | W3517     | W3534        |
| 21 x 2.15<br>Wide Glide®<br>Road King®<br>Dresser Dual Disc                                  | W3415               | W3432                 | W3449       | W3466      | W3483       | W3501      | W3518     | W3535        |
| 21 x 3.25<br>FLH Road King®<br>Dresser Dual Disc   | W3416               | W3433                 | W3450       | W3467      | W3484       | W3502      | W3519     | W3536        |
| 16 x 3<br>Fat Boy® Heritage<br>Single Disc Left Side   | W3417               | W3434                 | W3451       | W3468      | W3485       | W3503      | W3520     | W3537        |
| 18 x 3.50<br>Fat Boy® Heritage<br>Single Disc Left Side                                      | W3418               | W3435                 | W3452       | W3469      | W3486       | W3504      | W3521     | W3538        |
| 21 x 3.25<br>Fat Boy® Heritage<br>Single Disc Left Side                                      | W3419               | W3436                 | W3453       | W3470      | W3487       | W3505      | W3522     | W3539        |

# FRONT WHEELS



All front wheels shown here have matching rear wheels on page 12-24.

All wheels can be special ordered in chrome. All chrome wheels are forged. Ask your sales rep for details.

| FRONT WHEELS '84-99 FXD Dyna Glide® SPORTSTER® & FXR Narrow Glide |                     |                       |             |            |             |            |           |              |
|---|---------------------|-----------------------|-------------|------------|-------------|------------|-----------|--------------|
| POLISHED SIZE   | 3 SPOKE BACK CUT #1 | 3 SPOKE DOUBLE CUT #4 | 15 SPOKE #9 | 5 STAR #10 | BALLZAK #12 | SPADES #13 | RHINO #14 | 10 SPOKE #18 |
| 18 x 3.50 Single Disc Left Side                                   | W2871               | W2875                 | W2879       | W2887      | W2895       | W2904      | W2912     | W2920        |
| 18 x 3.50 Dual Disc   | W2872               | W2876                 | W2880       | W2888      | W2896       | W2905      | W2913     | W2921        |
| 19 x 2.15 Single Disc Left Side                                   | W2640               | W2670                 | W2881       | W2889      | W2897       | W2906      | W2914     | W2922        |
| 19 x 2.15 Dual Disc   | W2641               | W2671                 | W2882       | W2890      | W2898       | W2907      | W2915     | W2923        |
| 21 x 2.15 Single Disc Left Side                                   | W2642               | W2672                 | W2883       | W2891      | W2899       | W2908      | W2916     | W2924        |
| 21 x 2.15 Dual Disc   | W2643               | W2673                 | W2884       | W2892      | W2901       | W2909      | W2917     | W2925        |
| 21 x 3.25 Single Disc Left Side                                   | W2873               | W2877                 | W2885       | W2893      | W2902       | W2910      | W2918     | W2926        |
| 21 x 3.25 Dual Disc   | W2874               | W2878                 | W2886       | W2894      | W2903       | W2911      | W2919     | W2927        |

| FRONT WHEELS '80-UP FXDWG Dyna Wide Glide® FXSTC Softail® Custom & FXWG |                     |                       |             |            |             |            |           |              |
|---|---------------------|-----------------------|-------------|------------|-------------|------------|-----------|--------------|
| POLISHED SIZE   | 3 SPOKE BACK CUT #1 | 3 SPOKE DOUBLE CUT #4 | 15 SPOKE #9 | 5 STAR #10 | BALLZAK #12 | SPADES #13 | RHINO #14 | 10 SPOKE #18 |
| 18 x 3.50 Single Disc Left Side   | W2715               | W2703                 | W2932       | W2936      | W2940       | W2944      | W2948     | W2952        |
| 19 x 2.15 Single Disc Left Side   | W2928               | W2930                 | W2933       | W2937      | W2941       | W2945      | W2949     | W2953        |
| 21 x 2.15 Single Disc Left Side   | W2714               | W2702                 | W2934       | W2938      | W2942       | W2946      | W2950     | W2954        |
| 21 x 3.25 Single Disc Left Side   | W2929               | W2931                 | W2935       | W2939      | W2943       | W2947      | W2951     | W2955        |

| FRONT WHEELS '86-UP FLSTC Heritage & FLSTF/N Fat Boy® & Nostalgia |                     |                       |             |            |             |            |           |              |
|---|---------------------|-----------------------|-------------|------------|-------------|------------|-----------|--------------|
| POLISHED SIZE   | 3 SPOKE BACK CUT #1 | 3 SPOKE DOUBLE CUT #4 | 15 SPOKE #9 | 5 STAR #10 | BALLZAK #12 | SPADES #13 | RHINO #14 | 10 SPOKE #18 |
| 16 X 3 Single Disc Left Side                                      | W2716               | W2704                 | W2956       | W2958      | W2960       | W2962      | W2964     | W2966        |
| 18 x 3.50 Single Disc Left Side                                   | W2717               | W2705                 | W2957       | W2959      | W2961       | W2963      | W2965     | W2967        |

| FRONT WHEELS '88-UP FXSTS Springer® Softail® & Bad Boy® except FLSTS (Softail® Springer® right side mount) |                     |                       |             |            |             |            |           |              |
|--|---------------------|-----------------------|-------------|------------|-------------|------------|-----------|--------------|
| POLISHED SIZE  | 3 SPOKE BACK CUT #1 | 3 SPOKE DOUBLE CUT #4 | 15 SPOKE #9 | 5 STAR #10 | BALLZAK #12 | SPADES #13 | RHINO #14 | 10 SPOKE #18 |
| 21 x 2.15 Single Disc Left Side  | W2718               | W2706                 | W2970       | W2972      | W2974       | W2976      | W2978     | W2980        |
| 21 x 3.25 Single Disc Left Side  | W2968               | W2969                 | W2971       | W2973      | W2975       | W2977      | W2979     | W2981        |

| FRONT WHEELS '87-UP ROAD KING®, FLHS, FLHT, FLT |                     |                       |             |            |             |            |           |              |
|---|---------------------|-----------------------|-------------|------------|-------------|------------|-----------|--------------|
| POLISHED SIZE                                   | 3 SPOKE BACK CUT #1 | 3 SPOKE DOUBLE CUT #4 | 15 SPOKE #9 | 5 STAR #10 | BALLZAK #12 | SPADES #13 | RHINO #14 | 10 SPOKE #18 |
| 16 X 3 Dual Disc                                | W2712               | W2700                 | W2984       | W2987      | W2990       | W2993      | W2996     | W2999        |
| 18 x 3.50 Dual Disc                             | W2713               | W2701                 | W2985       | W2988      | W2991       | W2994      | W2997     | W3401        |
| 21 x 3.25 Dual Disc                             | W2982               | W2983                 | W2986       | W2989      | W2992       | W2995      | W2998     | W3402        |

NOVELTY

SEATING

EXHAUST

LIGHTING

ELECTRICAL

CARBURETION

GAS/SPEEDO

OIL

ENGINE

GASKETS

TRANSMISSION

DRIVELINE

BRAKES

FRONT END

CABLES

DRIVE CHASSIS

HARDWARE

## REAR WHEELS



All rear wheels shown here & below have matching front wheels on page 12-22 and 12-23.  
All wheels can be special ordered in chrome. All chrome wheels are forged. Ask your sales rep for details.

| REAR WHEELS 2000-UP SOFTAIL®, DEUCE, BIG TWINS, & SPORTSTER® |                     |                       |          |             |            |             |            |           |              |
|--|---------------------|-----------------------|----------|-------------|------------|-------------|------------|-----------|--------------|
| POLISHED SIZE  | 3 SPOKE BACK CUT #1 | 3 SPOKE DOUBLE CUT #4 | SOLID #7 | 15 SPOKE #9 | 5 STAR #10 | BALLZAK #12 | SPADES #13 | RHINO #14 | 10 SPOKE #18 |
| 16 x 3 Softail® Big Twins                                    | W2809               | W2816                 | W2823    | W2830       | W2837      | W2844       | W2851      | W2858     | W2865        |
| 16 x 3 Sportster® Belt Drive                                 | W2810               | W2817                 | W2824    | W2831       | W2838      | W2845       | W2852      | W2859     | W2866        |
| 17 x 5.5 Softail® Big Twins                                  | W2811               | W2818                 | W2825    | W2832       | W2839      | W2846       | W2853      | W2860     | W2867        |
| 18 x 3.5 Softail® Big Twins                                  | W2812               | W2819                 | W2826    | W2833       | W2840      | W2847       | W2854      | W2861     | W2868        |
| 18 x 3.5 Sportster®  | W2813               | W2820                 | W2827    | W2834       | W2841      | W2848       | W2855      | W2862     | W2869        |
| 18 x 5.5 Softail® Deuce                                      | W2814               | W2821                 | W2828    | W2835       | W2842      | W2849       | W2856      | W2863     | W2870        |
| 18 x 8.5 Softail® Big Twins                                  | W2815               | W2822                 | W2829    | W2836       | W2843      | W2850       | W2857      | W2864     | W2871        |

Note: 17 x 5.5 & 18 x 5.5 rear wheel for Softail® Deuce accepts 180 tire only.  
Specify if your axle is 3/4" or 1" on rear wheel 18 x 8.5. This size is for wide frame custom application.  
18 x 4.25 #1824 & 18 x 10.5 #18216 sizes not listed here, as well as most other sizes listed above, are also available in forged aluminum.  
Ask your salesperson for the details.

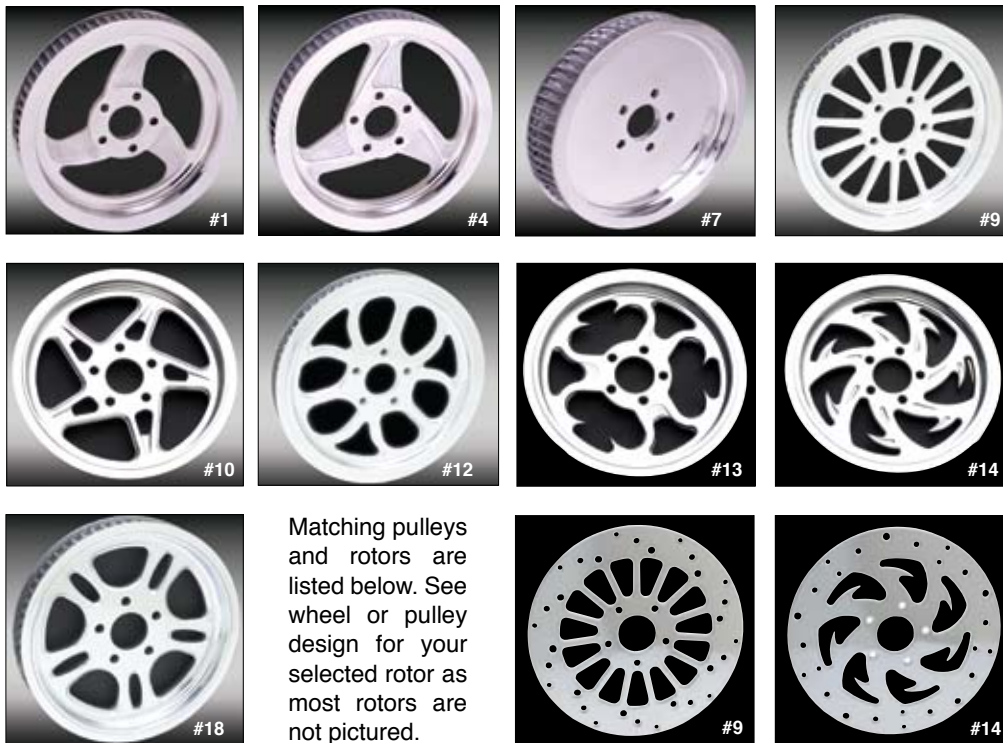
| REAR WHEELS '84-99 SOFTAIL®, ROAD KING®, DEUCE, BIG TWIN, SPORTSTER® |                     |                       |          |             |            |             |            |           |              |
|--|---------------------|-----------------------|----------|-------------|------------|-------------|------------|-----------|--------------|
| POLISHED SIZE  | 3 SPOKE BACK CUT #1 | 3 SPOKE DOUBLE CUT #4 | SOLID #7 | 15 SPOKE #9 | 5 STAR #10 | BALLZAK #12 | SPADES #13 | RHINO #14 | 10 SPOKE #18 |
| 16 x 3 Road King®, Big Twin FLHS, FLHT                               | W2639               | W2669                 | W2689    | W2766       | W2773      | W2780       | W2787      | W2794     | W2802        |
| 16 x 3 Sportster® Belt Drive   | W2719               | W2707                 | W2755    | W2767       | W2774      | W2781       | W2788      | W2795     | W2803        |
| 17 x 5.5 Softail® Big Twins  | W2760               | W2762                 | W2764    | W2768       | W2775      | W2782       | W2789      | W2796     | W2804        |
| 18 x 3.5 Softail® Big Twins  | W2721               | W2709                 | W2757    | W2769       | W2776      | W2783       | W2790      | W2797     | W2805        |
| 18 x 3.5 Sportster® Belt Drive                                       | W2720               | W2708                 | W2756    | W2770       | W2777      | W2784       | W2791      | W2798     | W2806        |
| 18 x 5.5 Softail® Big Twins  | W2722               | W2710                 | W2758    | W2771       | W2778      | W2785       | W2792      | W2799     | W2807        |
| 18 x 8.5 Softail® Big Twins  | W2761               | W2763                 | W2765    | W2772       | W2779      | W2786       | W2793      | W2801     | W2808        |

Note: 17 x 5.5 & 18 x 5.5 rear wheel for Softail® Deuce accepts 180 tire only.  
Specify if your axle is 3/4" or 1" on rear wheel 18 x 8.5. This size is for wide frame custom application.  
18 x 4.25 #1824 & 18 x 10.5 #18216 sizes not listed here, as well as most other sizes listed above, are also available in forged aluminum.  
Ask your salesperson for the details.





# PULLEYS & ROTORS



Matching pulleys and rotors are listed below. See wheel or pulley design for your selected rotor as most rotors are not pictured.

All pulley's listed here can be special ordered in chrome.

| REAR PULLEYS                                   |                     | 2000-PRESENT SOFTAIL®, BIG TWIN FORGED PULLEYS |          |             |            |             |            |           |              |
|--|---------------------|--|----------|-------------|------------|-------------|------------|-----------|--------------|
| POLISHED ADAPTER KITS TEETH                    | 3 SPOKE BACK CUT #1 | 3 SPOKE DOUBLE CUT #4                          | SOLID #7 | 15 SPOKE #9 | 5 STAR #10 | BALLZAK #12 | SPADES #13 | RHINO #14 | 10 SPOKE #18 |
| 65 Tooth 1 1/8" With Adapter                   | W2618               | W2620  | W2623    | W2626       | W2629      | W2632       | W2635      | W2638     | W2681        |
| 70 Tooth 1 1/8" With Adapter                   | W2711               | W2621  | W2624    | W2627       | W2630      | W2633       | W2636      | W2679     | W2682        |
| 70 Tooth 1 1/2" Road King® Road Glide® Dresser | W2619               | W2622  | W2625    | W2628       | W2631      | W2634       | W2637      | W2680     | W2683        |

| REAR PULLEYS    |                     | '84-99 SOFTAIL®, BIG TWIN FORGED PULLEYS |          |             |            |             |            |           |              |
|-----------------|---------------------|--|----------|-------------|------------|-------------|------------|-----------|--------------|
| POLISHED TEETH  | 3 SPOKE BACK CUT #1 | 3 SPOKE DOUBLE CUT #4                    | SOLID #7 | 15 SPOKE #9 | 5 STAR #10 | BALLZAK #12 | SPADES #13 | RHINO #14 | 10 SPOKE #18 |
| 65 Tooth 1 1/2" | W2645               | W2675                                    | W2695    | W2605       | W2607      | W2610       | W2612      | W2614     | W2616        |
| 70 Tooth 1 1/2" | W2646               | W2676                                    | W2696    | W2606       | W2608      | W2611       | W2613      | W2615     | W2617        |

| ROTORS      |                     | 2000-PRESENT 11.5" STAINLESS STEEL |             |            |             |            |           |              |  |
|-------------|---------------------|------------------------------------|-------------|------------|-------------|------------|-----------|--------------|--|
| POLISHED    | 3 SPOKE BACK CUT #1 | 3 SPOKE DOUBLE CUT #4              | 15 SPOKE #9 | 5 STAR #10 | BALLZAK #12 | SPADES #13 | RHINO #14 | 10 SPOKE #18 |  |
| Left Front  | W3019               | W3023                              | W3026       | W3029      | W3035       | W3038      | W3042     | W3045        |  |
| Right Front | W3021               | W3024                              | W3027       | W3033      | W3036       | W3039      | W3043     | W3046        |  |
| Right Rear  | W3022               | W3025                              | W3028       | W3034      | W3037       | W3041      | W3044     | W3047        |  |

| ROTORS      |                     | '84-99 11.5" STAINLESS STEEL |             |            |             |            |           |              |  |
|-------------|---------------------|------------------------------|-------------|------------|-------------|------------|-----------|--------------|--|
| POLISHED    | 3 SPOKE BACK CUT #1 | 3 SPOKE DOUBLE CUT #4        | 15 SPOKE #9 | 5 STAR #10 | BALLZAK #12 | SPADES #13 | RHINO #14 | 10 SPOKE #18 |  |
| Left Front  | W2647               | W2677                        | W3001       | W3004      | W3007       | W3010      | W3013     | W3016        |  |
| Right Front | W2648               | W2678                        | W3002       | W3005      | W3008       | W3011      | W3014     | W3017        |  |
| Right Rear  | W2644               | W2674                        | W3003       | W3006      | W3009       | W3012      | W3015     | W3018        |  |

NOVELTY

SEATING

EXHAUST

LIGHTING

ELECTRICAL

CARBURETION

GAS/SPEEDO

OIL

ENGINE

GASKETS

TRANSMISSION

DRIVELINE

BRAKES

FRONT END

CABLES

DRIVE CHASSIS

HARDWARE

## CUSTOM WHEELS

All wheels on pages 12-26 thru 12-31 are custom made to order. Matching pulleys and rotors are available too. All wheels are Revolutionary 3D designed except for clear wheels. A 50% deposit is required on any custom wheel order. Call your rep for details on cost and ETA.



*The  
Incredible  
Clear  
Wheel...  
Yes, we said  
CLEAR!*



PATENT: D534,981  
Meets and exceeds JASO requirements  
for motorcycle wheels.

*Clear Wheel*

| SIZES     |           |
|-----------|-----------|
| 26 X 3.5  | 18 X 14   |
| 24 X 4    | 18 X 10.5 |
| 23 X 4    | 18 X 8.5  |
| 21 X 9    | 18 X 5.5  |
| 21 X 3    | 18 X 4.25 |
| 21 X 2.15 | 18 X 3.5  |
| 20 X 10.5 | 17 X 12   |



360° Brake  
Optional for  
clear wheel only.



# CUSTOM WHEELS



NOVELTY

SEATING

EXHAUST

LIGHTING

ELECTRICAL

CARBURETION

GAS/SPEEDO

OIL

ENGINE

GASKETS

TRANSMISSION

DRIVELINE

BRAKES

FRONT END

CABLES

DRIVE CHASSIS

HARDWARE

## CUSTOM WHEELS

### Cypher Wheel



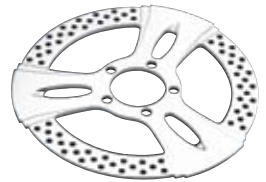
| SIZES     |           |
|-----------|-----------|
| 26 X 3.5  | 20 X 10.5 |
| 24 X 4    | 18 X 14   |
| 23 X 4    | 18 X 10.5 |
| 21 X 9    | 18 X 8.5  |
| 21 X 3    | 17 X 12   |
| 21 X 2.15 | -         |

*ddie  
Trotter*



### X-Wang

### Big Homie



| SIZES     |  |
|-----------|--|
| 26 X 3.5  |  |
| 24 X 4    |  |
| 23 X 4    |  |
| 21 X 9    |  |
| 21 X 3    |  |
| 21 X 2.15 |  |
| 20 X 10.5 |  |
| 18 X 14   |  |
| 18 X 10.5 |  |
| 18 X 8.5  |  |
| 18 X 4.25 |  |
| 18 X 3.5  |  |
| 17 X 12   |  |



# CUSTOM WHEELS

## Don Juan



| SIZES     |           |
|-----------|-----------|
| 26 X 3.5  | 18 X 14   |
| 24 X 4    | 18 X 10.5 |
| 23 X 4    | 18 X 8.5  |
| 21 X 9    | 18 X 5.5  |
| 21 X 3    | 18 X 4.25 |
| 21 X 2.15 | 18 X 3.5  |
| 20 X 10.5 | 17 X 12   |

*Donnie Smith*

## DS-1



## DS-3



NOVELTY

SEATING

EXHAUST

LIGHTING

ELECTRICAL

CARBURETION

GAS/SPEEDO

OIL

ENGINE

GASKETS

TRANSMISSION

DRIVELINE

BRAKES

FRONT END

CABLES

DRIVE CHASSIS

HARDWARE

*Russell Palmer*

*Trippin'*



*Cutlass*



| SIZES     |           |
|-----------|-----------|
| 26 X 3.5  | 18 X 14   |
| 24 X 4    | 18 X 10.5 |
| 23 X 4    | 18 X 8.5  |
| 21 X 9    | 18 X 5.5  |
| 21 X 3    | 18 X 4.25 |
| 21 X 2.15 | 18 X 3.5  |
| 20 X 10.5 | 17 X 12   |



*Devil's Slide*



DRIVELINE

# CUSTOM WHEELS

| SIZES     |           |
|-----------|-----------|
| 26 X 3.5  | 18 X 14   |
| 24 X 4    | 18 X 10.5 |
| 23 X 4    | 18 X 8.5  |
| 21 X 9    | 18 X 5.5  |
| 21 X 3    | 18 X 4.25 |
| 21 X 2.15 | 18 X 3.5  |
| 20 X 10.5 | 17 X 12   |



S & M



| SIZES     |           |
|-----------|-----------|
| 26 X 3.5  | 20 X 10.5 |
| 24 X 4    | 18 X 14   |
| 23 X 4    | 18 X 10.5 |
| 21 X 9    | 18 X 8.5  |
| 21 X 3    | 17 X 12   |
| 21 X 2.15 | -         |



M1



NOVELTY

SEATING

EXHAUST

LIGHTING

ELECTRICAL

CARBURETION

GAS/SPEEDO

OIL

ENGINE

GASKETS

TRANSMISSION

DRIVELINE

BRAKES

FRONT END

CABLES

DRIVE CHASSIS

HARDWARE

## PULLEYS, FRONT & REAR WHEELS

### POLISHED REAR PULLEYS & COVERS FROM BDL



**5 SPOKE**  
B4411 65T  
B4413 70T



**9 SPOKE**  
B4410 70T



**SWEPT**  
B4417 65T  
B4419 70T



**SOLID**  
B4420 65T  
B4422 70T



### BELT SPROCKET COVER

If your serious about building a custom bike, you'll need a belt sprocket cover. This chrome cover is machined from a solid hunk of billet aluminum. Includes a polished aluminum backing plate to hide the sprocket & chrome countersunk allen bolts.

**B4308** 70T Sprocket cover



Step 1

**B4414**



Step 2



Step 3

Chrome Bolt Covers for Conventional Flat Pulleys

### DNA MOTORCYCLE PRODUCTS

All wheels are made in the USA & are assembled using the highest grade materials available. Such as: chrome billet hubs, stainless steel spokes & nipples, spun chrome steel rings & are tubeless.



**60 SPOKE**



**80 SPOKE**

### DNA CHROME SUPER SPOKE PULLEY

Looks Great with spoke & aluminum wheels.



**W2601** 70T 1 1/8"  
**W2602** 65T 1 1/8"  
**W2603** 70T 1 1/2"  
**W2604** 65T 1 1/2"

### PINGEL® REAR SPROCKET SPACER

Spacer allows the installation of wheels up to 142mm wide on 2000-2003 H-D FLH models without any other modifications.



**B4312**

### NESS REAR PULLEY SPACER

Converts 1-1/8" width 2000-up pulley to 99-earlier wheel. Allows use of 170 width tires on 1999 & earlier application.



**B4415**



| 60 SPOKE | 80 SPOKE | FRONT WHEEL                    |
|----------|----------|--------------------------------|
| W3054    | W3065    | 16 X 3.5 FLST '00-up           |
| W3051    | W3062    | 16 X 3.5 FLST '86-99           |
| W3055    | W3066    | 19 X 2.15 Narrow Glide® '00-up |
| W3052    | W3063    | 19 X 2.15 Narrow Glide® '86-99 |
| W3056    | W3067    | 21 X 2.15 Wide Glide® '00-up   |
| W3053    | W3064    | 21 X 2.15 Wide Glide® '84-99   |
| 60 SPOKE | 80 SPOKE | REAR WHEEL '00-UP              |
| W3057    | W3068    | 16 X 3.5                       |
| W3059    |          | 16 X 6                         |
| W3058    | W3069    | 18 X 4.25                      |
| W3060    | W3071    | 18 X 5.5                       |
| W3061    | W3072    | 18 X 8.5                       |



# FRONT WHEELS

## CHROME 80-SPOKE FROM AMERICAN WIRE WHEEL

Composition billet hub and steel rim with 80 gauge 190 steel spokes. This DOT approved show chrome wheel features a rim of 1010 cold rolled steel. Complete with Hub, bearings, spacers and seals. Fits '86-up Big Twins and '79-up Sportster®.

**R3066** 16" x 3.5" complete front assembly, single disc.



## SINGLE & DUAL DISC WHEEL ASSEMBLIES

These chrome assemblies are designed for '78-up single and dual disc models.

**W3090** 19" Single & Dual Disc '84-up FX, FXR, XL, Dyna Narrow Glide® Repl. OEM 43312-84

**W3100** 21" Single & Dual Disc '84-up FX, FXR, XL, Dyna Narrow Glide®

**W3190** 19" Dual Disc wheel '78-E84 FX, XL Repl. OEM 43341-78

**W3200** 21" Dual Disc wheel '78-E84 FX, XL

**W3160** 16" Single Disc wheel '84-99 FXST, FXWG & FXDWG



## SINGLE FLANGE WHEELS FOR BIG TWINS

This assembly features beautiful chrome components. Each wheel comes complete with a 21" rim laced to a chrome hub assembly with bearings, seals and internal components.

**W3140** 21" '84-99 FXST except Springer®, '84-86 FXWG

**W3150** 21" 5/16", '73-83 FX, FXE 80, FXWG



## STAR HUB WHEEL ASSEMBLIES

A full selection of beautifully chromed wheels & spokes. Bearing preloads are factory set. Laced & Trued in America.

**W3110** 16" Big Twin '36-66 front or rear Repl. OEM 40981-40



## DUAL FLANGE WHEEL ASSEMBLIES

These wheels are laced & trued in the U.S.A. Comes complete with hub bearing kit installed. Available with 5/16" flange holes to fit '73-83 FXWG, FXR/T front or with 7/16" flange holes for '73-83 FL, FLH front.

**W3030** 19" front, 5/16" WM 2

**W3040** 21" front, 5/16" WM 2

Repl. OEM 43664-80B

**W3031** 19", 7/16"

**W3032** 21", 7/16"



NOVELTY

SEATING

EXHAUST

LIGHTING

ELECTRICAL

CARBURETION

GAS/SPEEDO

OIL

ENGINE

GASKETS

TRANSMISSION

DRIVELINE

BRAKES

FRONT END

CABLES

DRIVE CHASSIS

HARDWARE

# REAR WHEELS & BEARINGS

## CHROME DUAL FLANGE REAR

This wheel assembly comes complete with chrome spokes laced to chrome hubs and rims. The hubs come with thick spoke flanges and rotor flanges held to .001" runout. This is a very versatile assembly and as such will accept any stock sprocket-rotor configuration.

**W3050** 16" x 3" fits '73-83 FL, FLH, FXWG, '73-83 FX  
**Repl. OEM 40968-73**



## CHROME WHEEL FOR SPORTSTER®

This wheel assembly comes complete with chrome spokes laced to chrome rims and hubs.

Each kit also includes bearings, spacers and seals.

**W3170** 16" x 3" fits XLH, XLCH '55-78  
**Repl. OEM 40989-70**

## WHEEL BEARINGS

- B3904** '63-78 XL Rear Wheel, '54-72 XL & '71-72 FX Front Wheel **Repl. OEM 9008**
- B3905** Same As Above, Shielded **Repl. OEM 9009**
- B3906** '54-72 Sportster® Rear Wheel double row **Repl. OEM 9010**
- H3030** '73-up Big Twin Front & Rear Wheel, '73-up Sportster® Front Wheel, '79-up Sportster® Rear Wheel includes Races. Sold in pairs **Repl. OEM 9052**
- B3925** Timken wheel bearing & race. '73-99 Big Twin Front & Rear Wheel, '73-up Sportster® Front Wheel '79-up Sportster® Rear Wheel Sold each. **Repl. OEM 9052**



## WHEEL BEARINGS

- B3903** Pre-99 Sealed wheel bearing 3/4" dia
- B3909** 2000-up Sealed wheel bearing 1" dia

# WHEEL ACCESSORIES

| WHEEL SEALS  |  |
|--------------|--|
| PART#        | DESCRIPTION  |
| <b>S4080</b> | <b>Rubber Oil Seal Repl. OEM 47519-83A</b><br>Cast or spoked front and rear wheels on most models from '83-99  |
| <b>S4100</b> | <b>Steel Oil Seal Repl. OEM 47519-72</b><br>Cast rear and spoked or cast front wheels on FX (except FXWG), FXR, and XL from '73-86<br>Cast front and rear wheels on FL from '73-79<br>Cast rear wheel (sprocket side only) on FLT, FLHT from '80-83<br>Also fits the swingarm on 4-speed FX Big Twin disc brake models from '73-86 |
| <b>S4090</b> | <b>Rubber Oil Seal Repl. OEM 47519-58</b><br>Spoked rear wheel on FL, FX and FXR from '79-83<br>Spoked front wheel on FL, & FXWG from '80-83<br>Cast front or rear wheels on FL '80-84<br>Cast front or rear (brake side only) on FLT and FLHT from '82-84<br>Also fits the swingarm on all Big Twin drum brake models from '58-72 |



## BALANCE MASTERS™ FOR WHEELS

See page 12-17 for our complete line & stop vibration problems.

- B5317** '73-up Wheels, dual flange
- B5318** Wheels, 9 spoke cast
- B5319** '36-72 Wheels, star hub
- B5320** '78-83 FX Wheels



## WILD ONE SKULL VALVE STEM CAPS

**W3080** Chrome valve stem caps



## OINKER VALVE STEM CAPS

**J1214** Pewter  
**J1215** Gold



NOVELTY

SEATING

EXHAUST

LIGHTING

ELECTRICAL

CARBURETION

GAS/SPEEDO

OIL

ENGINE

GASKETS

TRANSMISSION

DRIVELINE

BRAKES

FRONT END

CABLES

DRIVE CHASSIS

HARDWARE

## SPOKES & RIMS



### CHROME DROP CENTER FRONT RIMS

40-hole steel rims.

- R3020** 19" WM-1 1.60 width
- R3040** 19" WM-2 1.85 width
- R3030** 21" WM-2 1.85 width
- R3031** 21" WM-2 2.15 width
- R3032** 21" WM-2 2.15 width Excel rim

### CHROME DROP CENTER REAR RIMS

40-hole steel rim.

- R3050** 16" x 3" Repl. OEM 43085-81
- R3061** 16" x 3.5"



### FRONT SPOKES FROM WIN

Each complete spoke kit consists of 40 spokes and nipples.  
Available in chrome or highly polished stainless steel.

| CHROME                           | STAINLESS | RIM SIZE | RIM TYPE    | SPOKE LENGTH | SPOKE BEND | NIPPLE SIZE | APPLICATION   |
|----------------------------------|-----------|----------|-------------|--------------|------------|-------------|---------------|
|                                  | S4318     | 15"      | Drop Center | 6 1/4"       | 1 size     | Std.        | '36-up KH, XL |
| S3080                            | S4319     | 16"      | Drop Center | 6 3/4"       | 1 size     | Std.        | FX, FL Rear   |
| S4315                            | S4320     | 19"      | Drop Center | 8 1/4"       | 1 size     | Std.        | '36-84 FL     |
| S4316                            | S4321     | 21"      | Drop Center | 9 1/4"       | 1 size     | Std.        | '81-up FXWG   |
| S3030                            |           | 18"      | Custom      | 8 1/4"       | 1 size     | Std.        | '84-up FXST   |
| S3040                            | S4322     | 19"      | Custom      | 8 3/4"       | 1 size     | Std.        | Front         |
| S3050                            | S4323     | 21"      | Custom      | 9 3/4"       | 1 Size     | Extend      |               |
| <b>ALUMINUM FRONT DISC BRAKE</b> |           |          |             |              |            |             |               |
| S3010                            |           | 19"      | Custom      | 8 3/4"       | 2 size     | Extend      | '73-up XL, FX |
| S3020                            |           | 21"      | Custom      | 9 3/4"       | 2 size     | Extend      |               |
| S4317                            |           | 19"      | Drop Center | 8 1/4"       | 2 size     | Extend      |               |
| <b>ALUMINUM FRONT BRAKE DRUM</b> |           |          |             |              |            |             |               |
| S4327                            | S4324     | 19"      | Drop Center | 5 5/8"       | 2 size     | Std.        | '64-72 XL, FX |
| S3060                            | S4325     | 19"      | Custom      | 6"           | 2 size     | Std.        |               |
| S3070                            | S4326     | 21"      | Custom      | 6 3/4"       | 2 size     | Std.        |               |

### SPOKE WRENCH

Heavy Duty spoke wrench for spoke nipple sizes 1-6  
**T4660**



### STICK-ON WHEEL WEIGHTS



**W3269** 1/4 stick-on silver 36 pk

### CHROME WHEEL WEIGHTS

10 pack

- W3265** 1/4oz.
- W3266** 1/2 oz.
- W3267** 3/4 oz.
- W3268** 1.0 oz.



### LEAD WHEEL WEIGHTS

10 pack

- W3262** 3/4 oz.
- W3263** 1.0 oz.
- W3264** 1 1/2 oz.

### RIM STRIPS

- R3304** 1 1/4" for 16" rear rims with side valve inner tube
- R3305** 1 1/4" for 16" rear rims with center valve inner tube
- R3306** 1" for 19" rims with center valve inner tube
- R3307** 1" for 21" rims with center valve inner tube



### NYLON RIM SAVERS

Protect your alloy rims from getting scratched by tire levers or tools while changing tires.  
Sold in pairs.

**W3275** Rim Savers



# WHEEL HUBS

## CHROME DUAL FLANGE HUB ASSEMBLIES

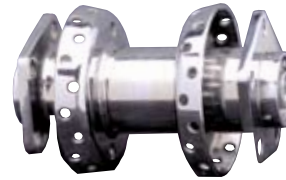
Complete chrome hub assembly with all internal components.

**H3348** '86-up FXST/S, FXR, FLSTC, '93-95 FLSTN and '86-up XL rear 3/8" rotor hole and 7/16" pulley hole

**Repl. OEM 40976-86**

**H3080** '73-83 FL, FLH front & rear, '73-83 FX,FXWG rear 7/16" hole **Repl. OEM 43540-73**

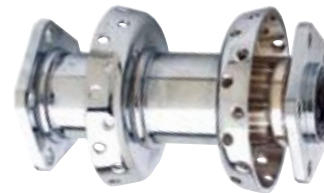
**H3342** '73-83 FXWG, FXRT front wheel hub with 5/16" flange holes **Repl. OEM 43663-80A**



## CHROME DUAL FLANGE EXTRA WIDE REAR HUB

7/8" offset, 7/16" hole on sprocket side, 3/8" on brake side and accepts up to 5" rim

**H3081** '84-99 Big Twin, XL



## CHROME FRONT SINGLE DISK HUB ASSEMBLIES

Complete chrome single flange hubs with bearings, seals and all internal components.

**H3349** '84-up FLST/C, FLSTN front 5/16" flange holes **Repl. OEM 43053-86**

**H3347** '84-86 FXWG models & '84-up FXSTC & '93-up FXDWG except Springer®, also custom applications on single disc FX & XL models with wide fork conversions **Repl. OEM 43672-84**



## CHROME FRONT DUAL DISK WHEEL HUB

Complete with all internal components.

**H3070** '77-83 FX, FXR & XL with dual disc Narrow Glide® front end **Repl. OEM 43600-78**

**H3110** '84-up Dyna Glide®, FX, FXR & XL models except FXLR with single or dual disc Narrow Glide® front ends **Repl. OEM 43619-84**



NOVELTY

SEATING

EXHAUST

LIGHTING

ELECTRICAL

CARBURETION

GAS/SPEEDO

OIL

ENGINE

GASKETS

TRANSMISSION

DRIVELINE

BRAKES

FRONT END

CABLES

DRIVE CHASSIS

HARDWARE

# HUB COVERS

## BABY MOON HUB COVER

A chrome classic. Front hub cover for laced wheels.  
Made in the U.S.A

**H3810** '84-95 FXWG/DWG, FXST/S/C

**H3811** '86-up all Heritage



## CONE COVER

For the ultimate machine look in hubcaps, Win has the answer. American Made.

**H3814** '84-up FXWG/DWG, FXST/S/C

**H3815** '86-up all Heritage

## SUPER MOON HUB COVER

These chrome steel mini-hubcaps take an old idea and give it a new clean look. Easy to install and made in the U.S.A.

**H3812** '84-95 FXWG/DWG, FXST/S/C

**H3813** '86-up all Heritage



## 90° FRONT HUB COVER

These American made chrome hub covers are for the area between the brake rotor flange or the belt pulley flange and the spoke area of the wheel hub. Includes hold-down plates.

**H3816** '87-91 FXSTS

**H3817** '92-up FXSTS

**H3818** '86-up FLSTC

**H3819** '84-up FXWG/DWG, FXST/C/S

**H3821** '90-up Front for Fat Boy®

## 90° REAR HUB COVERS FOR SOFTAIL®

These chrome brake covers include special rotor and pulley hold-down plates and are easy to install. They are available for rear application on '87-92 Softail® models. Made in the U.S.A.

**H3820** '86-up FXDWG, 5-speed Softail® rear hubs with laced wheels

**H3822** '90-up Rear for Fat Boy®

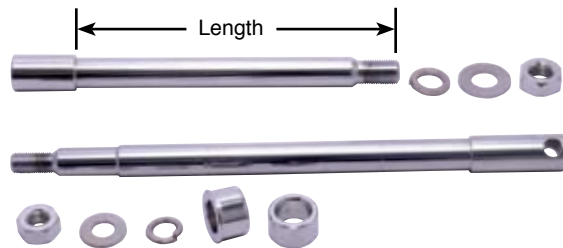


## GROOVED CONE HUB COVER

American made by Wild 1 & beautifully chromed.

**H3823** '87-up FXSTS/C

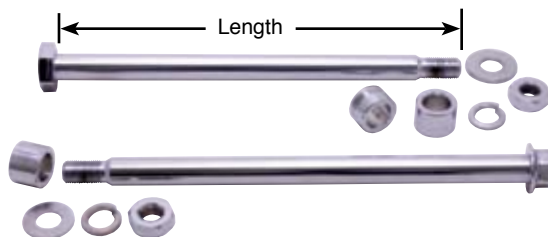
# AXLES, NUTS & CAPS



## CHROME FRONT AXLES

These chrome front axles are sold without hardware, which is available separately. All hardware kits include any spacers, sleeves, nuts, washers & cotter pins in respect to their OEM application. All measurements on the chart listed below are from the base of the head to the end of the axle.

| Hardware Only | Axle Only | Length    | Repl. Axle OEM | Front Application   |
|---------------|-----------|-----------|----------------|---|
| A4009         | A4015     | 9 5/8"    | 43872-36       | '36-48 EL/FL/UL   |
| A4010         | A4016     | 8 7/8"    | 43875-48       | '49-66 EL/FL  |
| A4010         | A4017     | 9 1/8"    | 43875-67       | '67-71 FL   |
| A4011         | A4018     | 10 3/16"  | 43875-73       | '73-80 FL, '80-83 FXWG  |
| A4012         | A4019     | 10 11/16" | 43346-83       | '81-84 FL, '84-99 FXST/C<br>'84-86 FXWG, '83-99 all<br>FLH models |
| A4013         | A4020     | 6 1/8"    | 43871-52       | '52-72 K/XL/FX  |
| A4014         | A4021     | 8"        | 43871-73       | '73-77 XL/FX  |
| A4014         | A4022     | 8"        | 43883-77       | '77-83 XL/FX/ FXR   |
| A4014         | A4023     | 8"        | 43883-84       | '84-87 XL/FX/FXR  |



## CHROME REAR AXLES

These chrome rear axles are sold without hardware, which is available separately. All hardware kits include any spacers, sleeves, nuts, washers & cotter pins in respect to their OEM application. All measurements on the chart listed below are from the base of the head to the end of the axle.

| Hardware Only | Axle Only | Length    | Repl. Axle OEM | Rear Application                      |
|---------------|-----------|-----------|----------------|---------------------------------------|
| A4032         | A4040     | 10 11/16" | 41552-36       | '36-57 EL/FL/UL                       |
| A4033         | A4041     | 11"       | 41552-58A      | '58-66 FL                             |
| A4034         | A4042     | 11"       | 41552-67       | '67-72 FL/FX                          |
| A4035         | A4043     | 12 1/8"   | 41552-73       | '73-85 FL/FX                          |
| A4036         | A4044     | 12 5/16"  | 41580-79       | '80-86 FL/FX Belt Drive               |
| A4037         | A4045     | 10 3/8"   | 41551-52       | '52-78 K/XL                           |
| A4038         | A4046     | 11 5/16"  | 41563-77A      | '79-up XL                             |
| A4039         | A4047     | 12 1/2"   | 41110-79A      | '82-99 FXR & FLH,<br>'86-99 Softails® |
| A4058         | A4049     | 13"       | 41114-90       | '91-up Dyna                           |

NOVELTY

SEATING

EXHAUST

LIGHTING

ELECTRICAL

CARBURETION

GAS/SPEEDO

OIL

ENGINE

GASKETS

TRANSMISSION

DRIVELINE

BRAKES

FRONT END

CABLES

DRIVE  
CHASSIS

HARDWARE

## AXLES, NUTS & CAPS

### AXLE & BULLET STYLE NUT ASSEMBLIES

These American made polished stainless steel fasteners are part of a stunning Bullet Style fastener line. See hardware section for complete line.

**F6405** Front axle & S/S nut assembly for FXSTS Springer®

**F6406** Rear axle & S/S spacer/washer set for Softail®



### BULLET STYLE FRONT AXLE NUT COVER & SPACER SET

These American made polished stainless steel fasteners are part of a stunning Bullet Style fastener line. See hardware section for complete line.

**F6404** All Softail® models except Springer®



Nut bottoms

### CHROME FRONT AXLE CAPS

**A3175** '73-up Big Twin





# AXLE COVERS

NOVELTY

SEATING

EXHAUST

LIGHTING

ELECTRICAL

CARBURETION

GAS/SPEEDO

OIL

ENGINE

GASKETS

TRANSMISSION

DRIVELINE

BRAKES

FRONT END

CABLES

DRIVE CHASSIS

HARDWARE



## SKULL AXLE NUT COVERS

The ultimate bad ass accessories, these chrome nut covers come complete with diamond cut eyes to glue in the sockets. For matching accessories see Wild One Products in index.

**A3070** '88-up Springer®

**A3071** '84-99 Wide Glide® Front

**A3072** Fits all rear with 15/16" nuts

## CHROME REAR AXLE CAPS FOR SOFTAIL®

The perfect way to hide those ugly axle nuts on your '86-up FLST or FXST.

**A4050** Softail® axle caps, pair



## CHROME FRONT AXLE NUT COVERS

These chrome nut covers fit a variety of applications:

**A4048** '72-84 FL, '80-up FLT, 80-86 FXWG,

'84-up Softail®, '88-up FXR.

# AXLE NUTS

## CHROME REAR AXLE ACORN KIT

When installed, these chrome plated 1 1/4" hex acorn nuts will add a clean, finished look to any Harley® with welded nut rear axle.

**F6331** Acorn nut



## CHROME REAR AXLE NUT & WASHER KIT

Chrome plated heavy duty machined steel washers prevent distortion of square swingarms.

**F6337** '73-up Big Twins & '79-up XL



## CHROME REAR AXLE NUT AND LOCK KIT

Quality reproduction rear axle kit contains axle nut, sleeve nut, sleeve collar and axle lockwasher. All parts are made to original Harley® specifications.

**F6332** '30-72 Big Twins



## CHROME FRONT AXLE NUT KIT

A quality hardware kit offered by Colony to make the older Harley® look better and stay together longer. Kits contain one each; axle nut, sleeve nut and cotter pin or two castle nuts and two cotter pins depending on application.

**F6334** '30-71 Big Twins

## CHROME FRONT AXLE NUT & WASHER KIT

Chrome plated machined steel washer, hex nut, and stainless steel lockwasher fits Wide Glide®, FX, Sportster®.

**F6335** '73-up FX, Sportster®

**F6336** '72-up Wide Glide®



# AXLE ADJUSTERS



## CHROME REAR CHAIN AXLE ADJUSTERS

Chrome plated, Made in America by Colony. '86-up FXST. Sold Each

- F6392** '86-92 FXST  
Repl. OEM 47579-86.  
**F6395** '93-99 FXST  
Repl. OEM 47579-93

## CUSTOM AXLE ADJUSTERS

Super custom look to fit stock swingarms.  
Sold in pairs.

- A3049** '82-92 FXR



## CHROME LATE AXLE ADJUSTERS

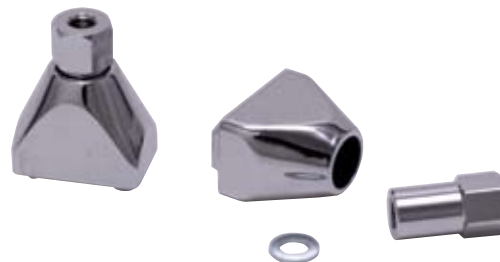
Includes washer, lock nut & rear fork end cover.  
Sold in pairs.

- W3210** '73-up Big Twins except '87-up Softail®,  
'79-up XL  
Repl. OEM 41530-84

## CHROME SWINGARM END CAP ADJUSTERS

These swingarm end cap adjusters feature die-cast construction and chrome finish. Sold in pairs.

- F2224** '73-86 4-speed Big Twins, '79-up XL models  
Repl. OEM's 47554-73, 41532-89



## CHROME SWINGARM END COVER AND NUT KIT

These nicely chrome plated end covers and nuts will replace the original Harley® part used on FX, FL, FXR & XL.

- F6338** '73-up Big Twins & '79-up XL's

NOVELTY

SEATING

EXHAUST

LIGHTING

ELECTRICAL

CARBURETION

GAS/SPEEDO

OIL

ENGINE

GASKETS

TRANSMISSION

DRIVELINE

BRAKES

FRONT END

CABLES

DRIVE CHASSIS

HARDWARE

# AXLE ADJUSTERS

## REAR AXLE ADJUSTING SCREW

Chrome plated custom 3/8-16 adjusting screw & locknuts.

**F4041** 2000-up Softail®  
Repl. OEM 47579-00



## CHROME AXLE ADJUSTER SPACERS FOR SOFTAIL®

**F2900** '86-89 Spacers  
Repl. OEM 47577-86

## ALLEN SCREW WHEEL ADJUSTER SETS BY GARDNER-WESTCOTT

**F4810** Thru-72 Big Twins Wheel Adjustment Bolts Rear  
**F4820** '87-92 FXST & FLST Softail® Wheel Adjustment Bolts Rear  
**F4039** '93-up all Softail® models Wheel Adjustment Bolts Rear



## CHROME REAR WHEEL ADJUSTER

Featuring square swingarms and die cast construction. Helps prevent swingarm tube damage from over tightening axles. Sold in pairs.

**F2223** '82-94 FXR  
Repl. OEM 41570-77

## CHROME REAR AXLE ADJUSTERS

Double nuts. Sold in pairs.

**W3231** '00-up Softail®  
Repl. OEM 47577-00 & 7783 nuts  
**W3230** '54-78 KH, XL, XLH, XLCH  
Repl. OEM 39985-52

