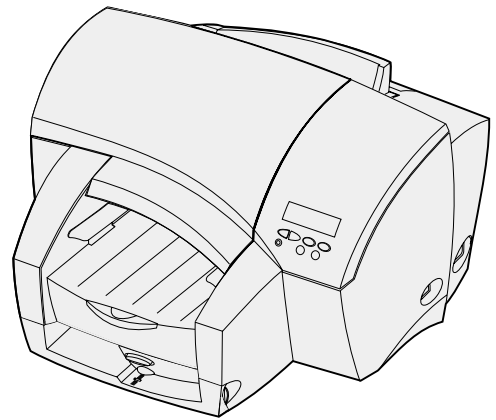




Lexmark J110

Setup Guide



Edition: October 2000

The following paragraph does not apply to any country where such provisions are inconsistent with local law: LEXMARK INTERNATIONAL, INC. PROVIDES THIS PUBLICATION "AS IS" WITHOUT WARRANTY OF ANY KIND, EITHER EXPRESS OR IMPLIED, INCLUDING, BUT NOT LIMITED TO, THE IMPLIED WARRANTIES OF MERCHANTABILITY OR FITNESS FOR A PARTICULAR PURPOSE. Some states do not allow disclaimer of express or implied warranties in certain transactions; therefore, this statement may not apply to you.

This publication could include technical inaccuracies or typographical errors. Changes are periodically made to the information herein; these changes will be incorporated in later editions. Improvements or changes in the products or the programs described may be made at any time.

You can purchase additional copies of publications related to this product by calling 1-800-553-9727. In the United Kingdom and Eire, call 0628-481500. In other countries, contact your point of purchase.

References in this publication to products, programs, or services do not imply that the manufacturer intends to make these available in all countries in which it operates. Any reference to a product, program, or service is not intended to state or imply that only that product, program, or service may be used. Any functionally equivalent product, program, or service that does not infringe any existing intellectual property right may be used instead. Evaluation and verification of operation in conjunction with other products, programs, or services, except those expressly designated by the manufacturer, are the user's responsibility.

Lexmark and Lexmark with diamond design, MarkNet, and MarkVision are trademarks of Lexmark International, Inc., registered in the United States and/or other countries. PerfectFinish is a trademark of Lexmark International, Inc.

AppleTalk and Macintosh are trademarks of Apple Computer, Inc., registered in the U.S. and other countries.

Other trademarks are the property of their respective owners.

© Copyright 2000 Lexmark International, Inc.
All rights reserved.

UNITED STATES GOVERNMENT RESTRICTED RIGHTS

This software and documentation are provided with RESTRICTED RIGHTS. Use, duplication or disclosure by the Government is subject to restrictions as set forth in subparagraph (c)(1)(ii) of the Rights in Technical Data and Computer Software clause at DFARS 252.227-7013 and in applicable FAR provisions: Lexmark International, Inc., Lexington, KY 40550.

FCC Emissions Information

This device complies with Part 15 of the FCC Rules. Operation is subject to the following two conditions:


(1) this device may not cause harmful interference, and (2) this device must accept any interference received, including interference that may cause undesired operation.

Any questions on this statement should be directed to:

Director of Lab Operations
Lexmark International, Inc.
740 West New Circle Road
Lexington, KY 40550
(859) 232-3000

Please see the online User's Guide for further information.

Safety information

- If your product is NOT marked with this symbol , it MUST be connected to an electrical outlet that is properly grounded.
- The power cord must be connected to an electrical outlet that is near the product and easily accessible.
- Refer service or repairs, other than those described in the operating instructions, to a professional service person.
- This product is designed, tested, and approved to meet strict global safety standards with the use of specific Lexmark components. The safety features of some parts may not always be obvious. Lexmark is not responsible for the use of other replacement parts.

Meet your printer

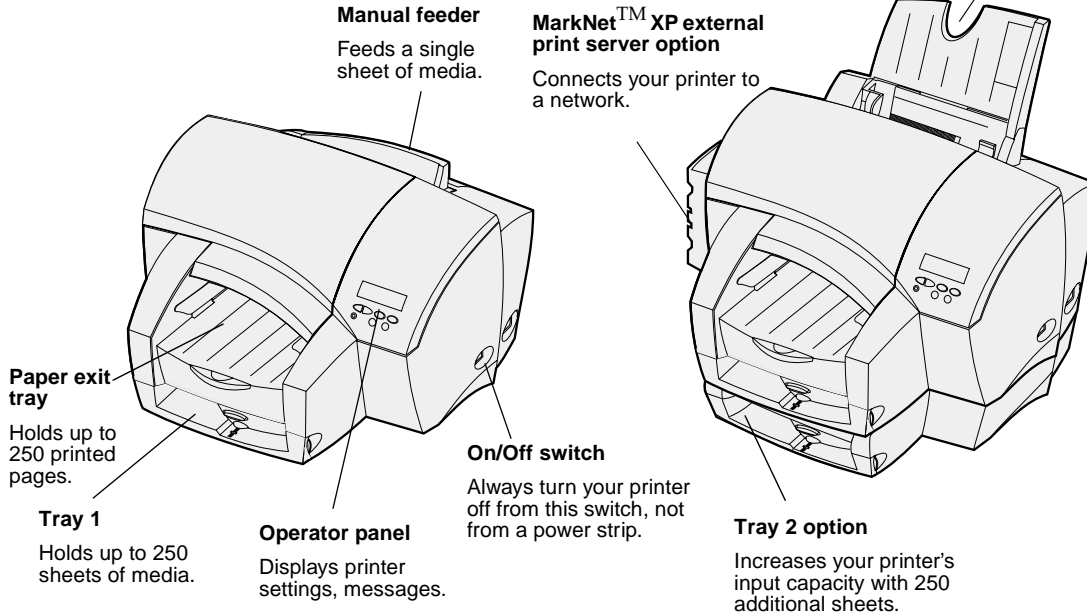
Your Lexmark™ J110 printer is a compact color and monochrome printer with a PerfectFinish™ cartridge to print great looking documents fast.

Lexmark J110

Lexmark J110 with options

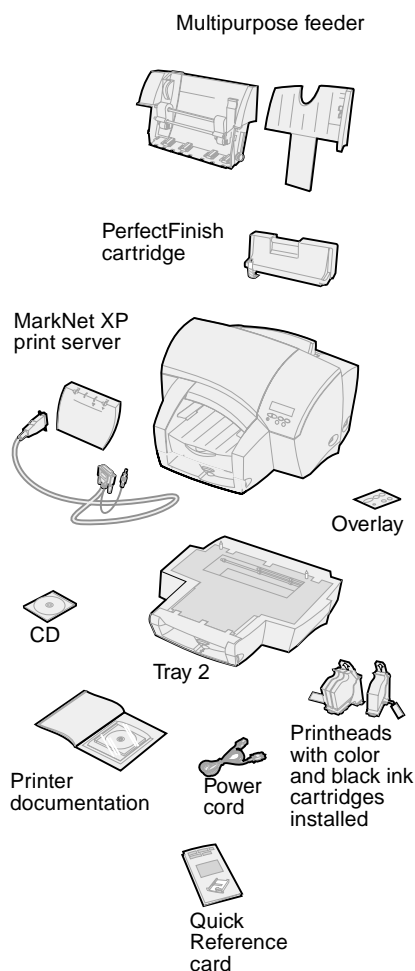
Multipurpose feeder option

Feeds all media— from transparencies to envelopes— from one source.



To set up your printer and start printing, just follow the simple steps in this *Setup Guide*.

Step 1: Unpack the box



1 Make sure you have the items listed below:

- Printer
- *Setup Guide with User's Guide CD*
- Quick Reference card
- Multipurpose feeder
- Printhead with black (K) ink cartridge
- Printhead with three color (CMY) ink cartridges
- PerfectFinish cartridge
- *Drivers, MarkVision™ and Utilities CD*
- Power cord
- Operator panel overlay
- Tray 2 (only with printers configured with this option)
- MarkNet XP print server (only with printers configured with this option)

If you need help during setup, or if any items are missing or damaged, refer to the registration card for the Lexmark phone number for your country.

2 Remove any tape and packing materials from inside and outside the printer.

3 Save the carton and packing materials in case you need to repack the printer for service or storage.

4 Place the printer on a flat, stable surface in a well-ventilated area.

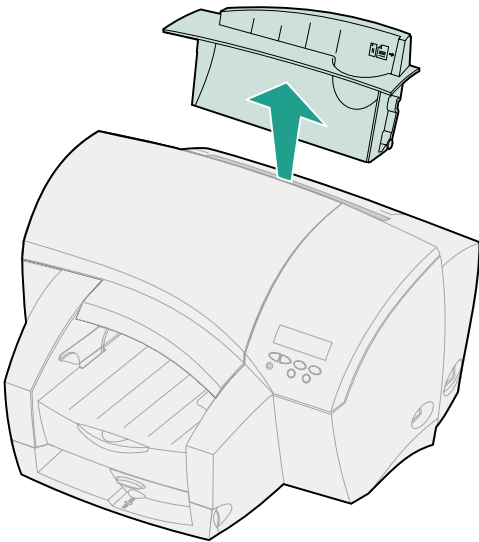
Do not place the printer:

- In direct sunlight
- Near heat sources or air conditioners
- In dusty or dirty environments

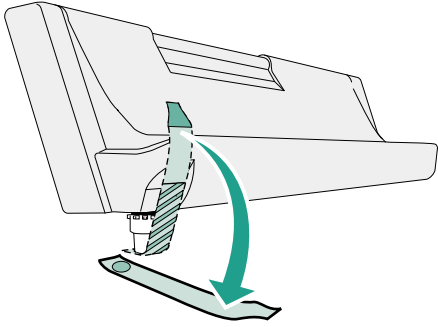
Step 2: Install the PerfectFinish cartridge

Your printer's unique PerfectFinish cartridge sets a new standard for high-quality printing on a wide range of plain paper.

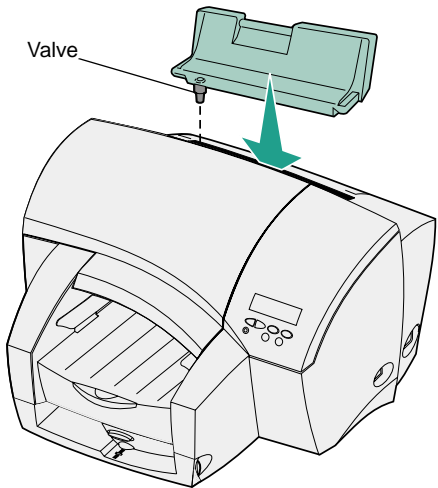
- 1** Remove the manual feeder.
- 2** Remove the PerfectFinish cartridge from its packaging.



3 Remove the tape covering the valve.

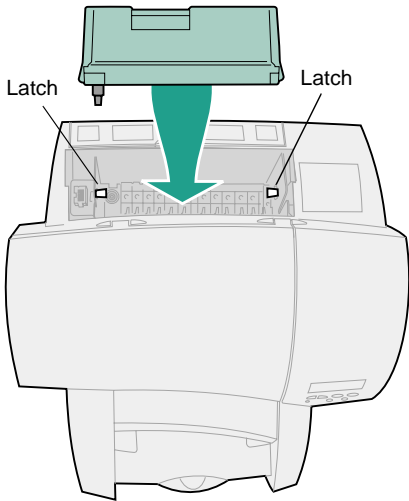


4 Hold the PerfectFinish cartridge so the valve is on the left side.



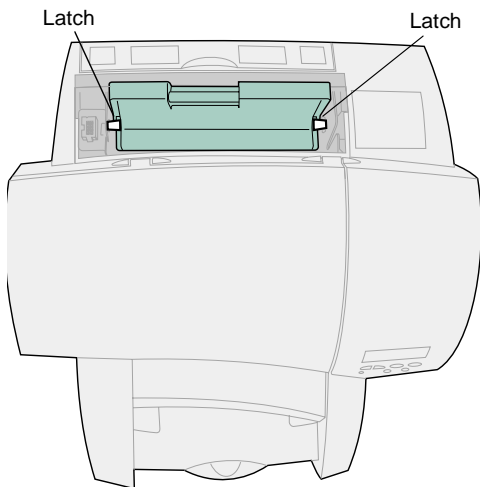
4 *Install the PerfectFinish cartridge*

- 5** Align the cartridge with the latches inside the printer.

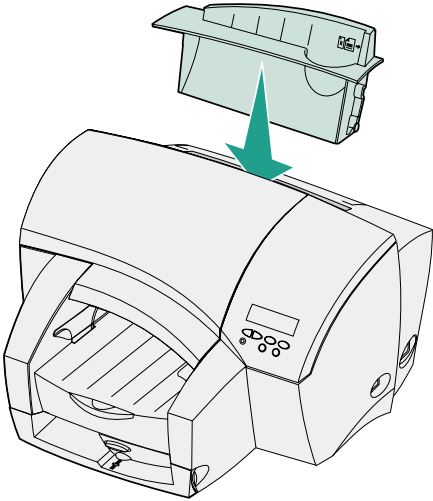


- 6** Lower the cartridge until it is under the latches as shown.

- 7** Push down on the cartridge to make sure it is securely in place.



8 Reinstall the manual feeder.

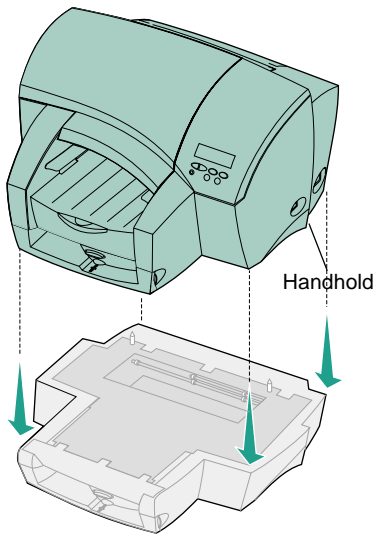


Warning: Keep the printer and computer turned off until you finish installing all options and cables.

Step 3: Install printer options

Installing a 250-sheet drawer

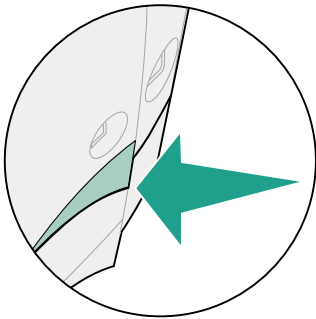
The 250-sheet drawer doubles your printer paper capacity.



- 1** Remove the drawer from its packaging.
- 2** Place the drawer in the location you have chosen for your printer.
- 3** Using the handholds on either side of the printer, carefully lift it and place it on top of the drawer.

The printer weighs 35 lb (16 kg); you may want someone to help you lift it.

- 4** Once the printer is on the drawer, gently rock the printer back and forth until both sides of the printer are lined up with the drawer.

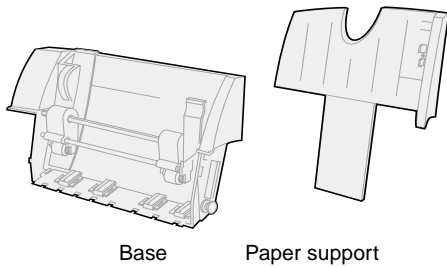




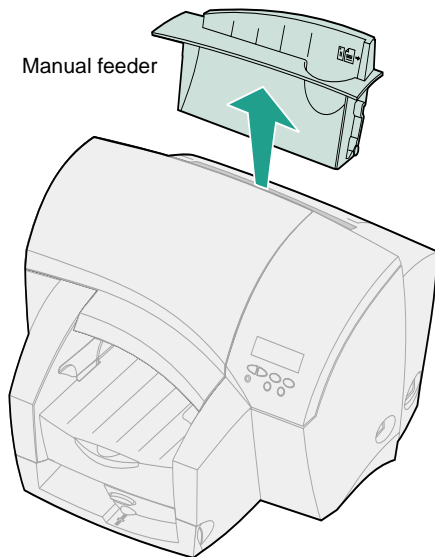
Be sure to remove the 250-sheet drawer before moving your printer to another location.

Installing a multipurpose feeder

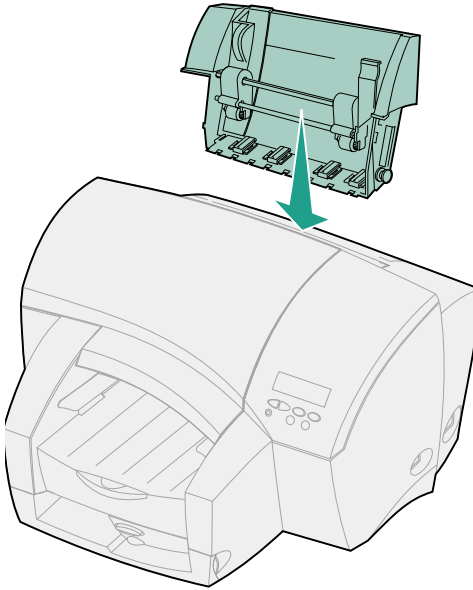
The multipurpose feeder comes in two pieces: the base and the paper support.



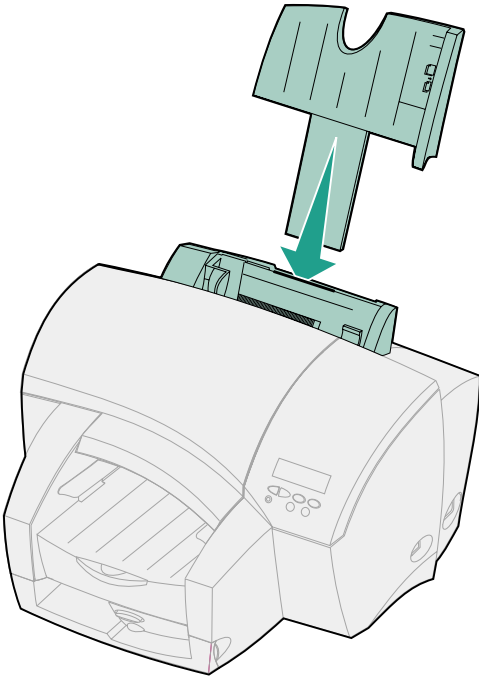
1 Remove the manual feeder, if installed.



- 2** Remove the multipurpose feeder from its packaging.
- 3** Align the base between the open slots inside the printer and lower it into place.



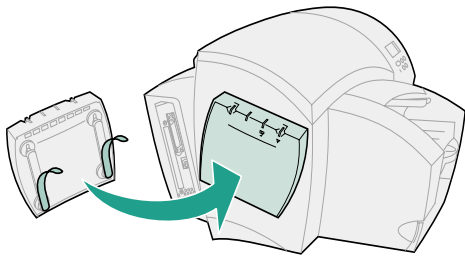
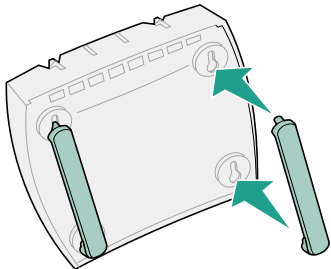
- 4** Insert the paper support into the slot.



Installing an external print server



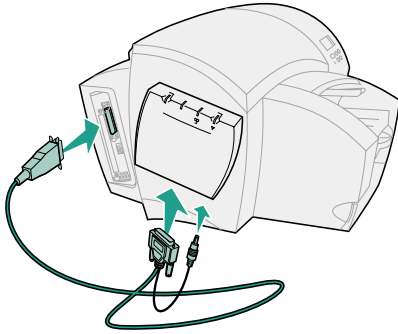
If you are using a MarkNet X2000 series print server, refer to the documentation that came with it for installation instructions.



- 1** Make sure the printer and computer are turned off.
- 2** Remove the MarkNet XP print server, two hangers and cable from the packaging.

- 3** Insert the hangers into the slots on the bottom of the print server.

- 4** Remove the adhesive backing from the hangers and then press the print server into place on the left side of the printer.

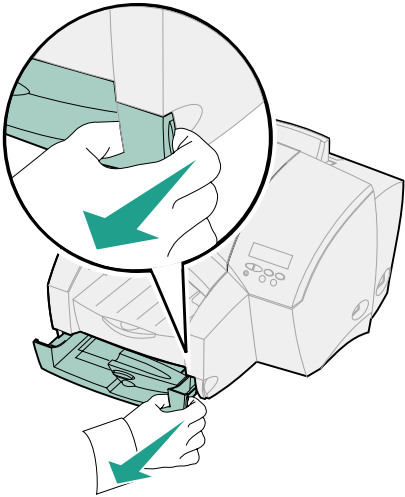


- 5** Plug one end of the parallel cable into the connector as shown.
- 6** Plug the other end of the parallel cable and the power jack into the MarkNet XP external print server.

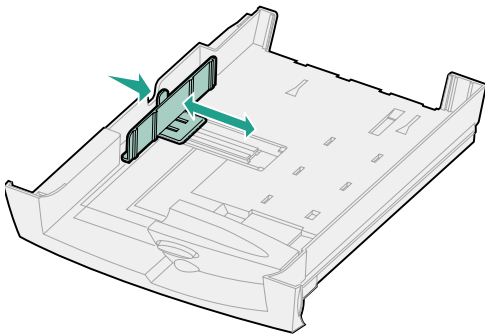
Step 4: Load paper

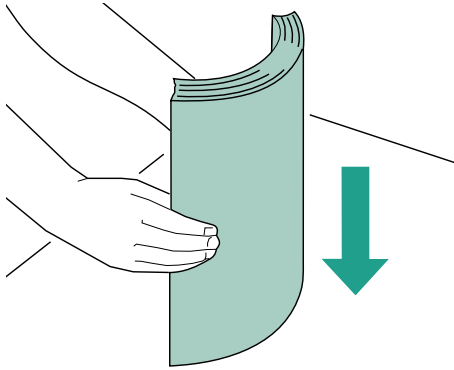
Both tray 1 and tray 2 are loaded the same way.

- 1** Grip the tray tab and pull the tray completely out of the printer.

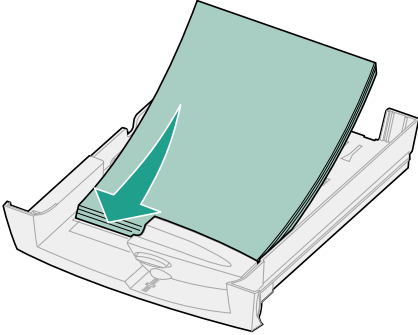


- 2** Squeeze the width guide and slide it all the way to the left.



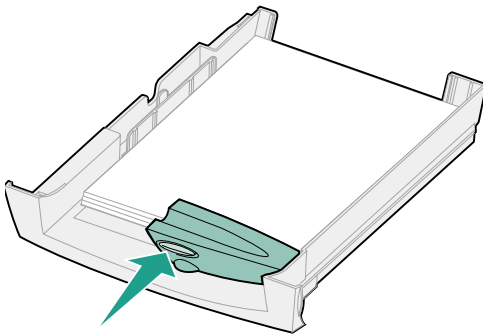


- 3** Before loading media, flex the sheets back and forth to loosen them, and then fan them. Straighten the edges on a level surface.

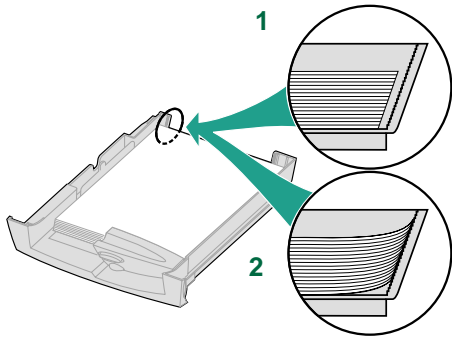


- 4** Place the paper in the tray, print side down.

Do not exceed the stack height indicator on the right side of the tray.

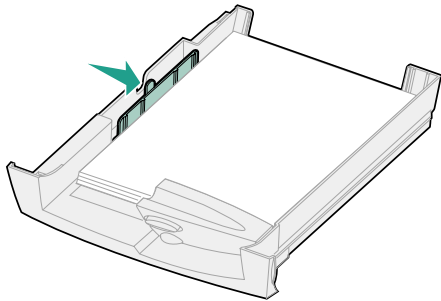


- 5** Press the length guide button to slide the guide lightly against the bottom edge of the paper stack.

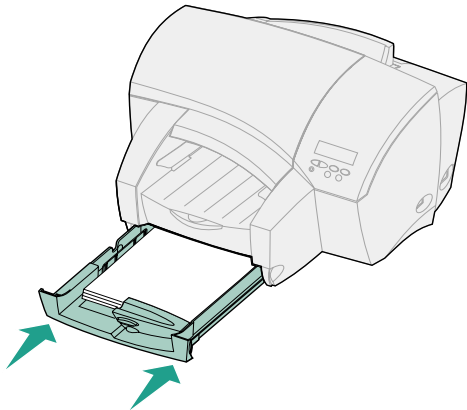


The paper should lie flat in the tray (1). If the length guide is pushed too tightly against the paper, the paper bends (2) against the paper supports, causing a jam as it is pulled into the printer.

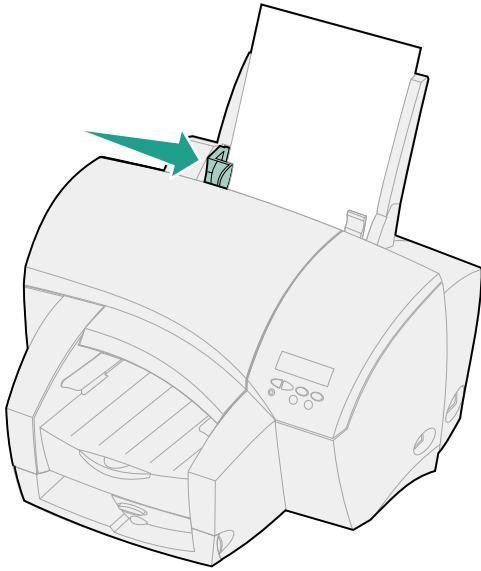
6 Squeeze the width guide and slide it to the right until it is lightly touching the edge of the paper stack.



7 Reinstall the tray.

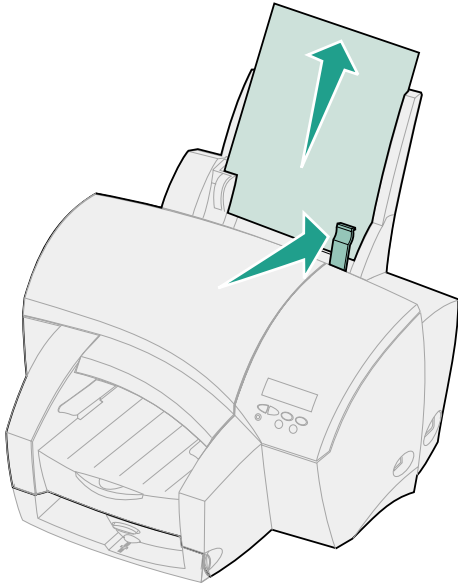


To load media in the multipurpose feeder:



- 1** Load the media against the right paper guide with the print side facing you.
- 2** Squeeze the left paper guide lever and slide it lightly against the edge of the media.

To remove media from the multipurpose feeder:



- 1** Push the paper release lever toward the media and hold it.
- 2** Pull the media straight up.

Step 5: Attach cables

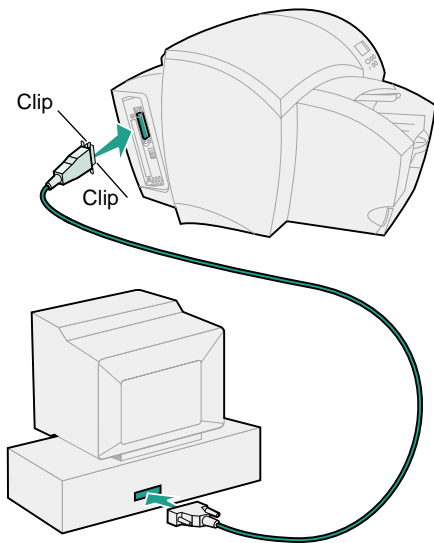
You can connect your printer to your computer with either a:

- Parallel cable
- USB cable

You can connect your printer to the network with an Ethernet cable (UTP cable with RJ.45 connector).

Attaching a parallel cable

If you are connecting your printer to a computer with a parallel cable, use an IEEE 1284-compliant parallel cable that supports bidirectional communication. We recommend Lexmark part number 1329605 (10 ft) or 1247498 (20 ft).

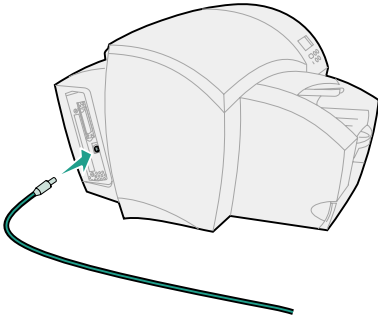


- 1** Make sure the printer and computer (and any attached peripherals) are turned off and unplugged from their electrical outlets.
- 2** Plug one end of the cable into the parallel connector as shown.
- 3** Snap down the clips at each end of the connector.
- 4** Plug the other end of the parallel cable into the connector on the back of the computer.

Tighten the cable screws securely.

Attaching a USB cable

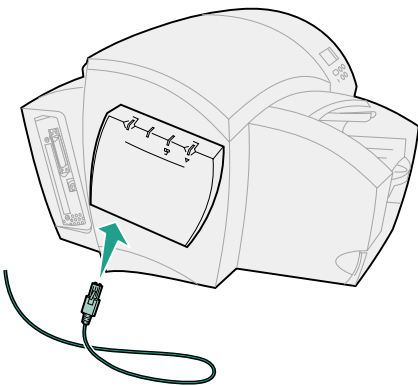
If you are connecting your printer to a computer with a Universal Serial Bus (USB) cable, we recommend Lexmark part number 12A2405 (2 m).



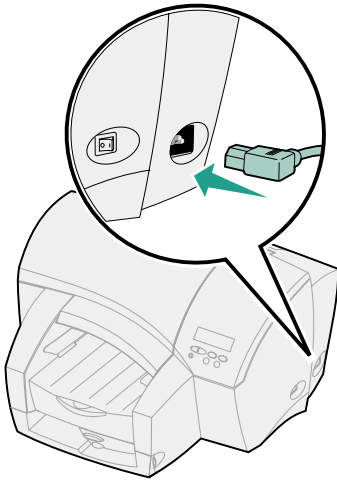
- 1** Make sure the printer and computer (and any attached peripherals) are turned off.
- 2** Plug one end of the cable into the USB port as shown.
- 3** Plug the other end of the cable into the USB port on the back (or side) of the computer.

Attaching an Ethernet cable

- 1** Make sure the printer and computer (and any attached peripherals) are turned off.
- 2** Plug one end of the Ethernet cable into the Ethernet network port on the MarkNet print server.
- 3** Plug the other end of the cable into a network LAN connection.



Attaching the power cord



- 1** Make sure the printer power switch is in the off (O) position.
- 2** Plug one end of the power cord into the power cord connector as shown.
- 3** Plug the other end into a properly grounded electrical outlet.

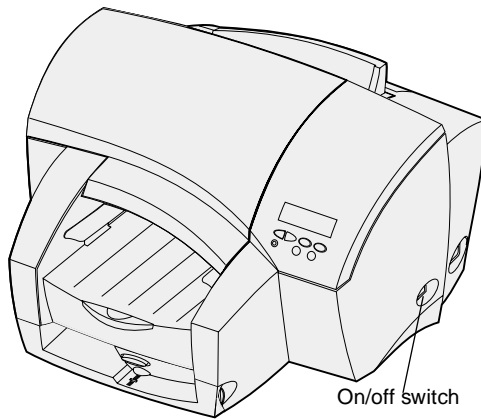
Step 6: Install the printheads

Your printer has two printheads:

- One printhead has three color ink cartridges (**C=Cyan, M=Magenta, Y=Yellow**) already installed.
- The other printhead has a black ink cartridge (**K=Black**) installed.

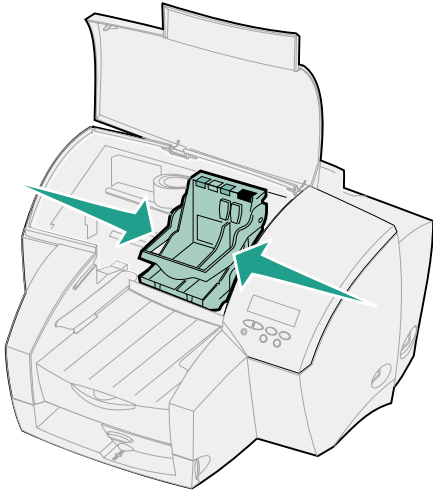
1 Turn on (I) the printer with the on/off switch.

The printer requires several minutes to warm up. After it completes its internal tests, a **31 Printheads Missing** message appears on the operator panel.

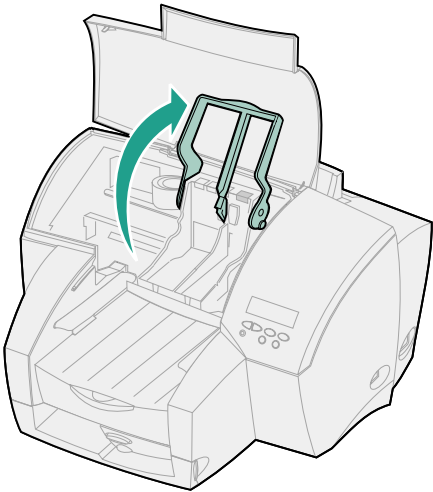


2 Open the printer front cover.

After a few seconds, the carrier moves to the load position at the center of the printer.

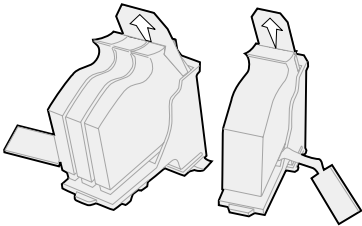


3 Lift the carrier handle.



4 Remove the printheads from their packaging.

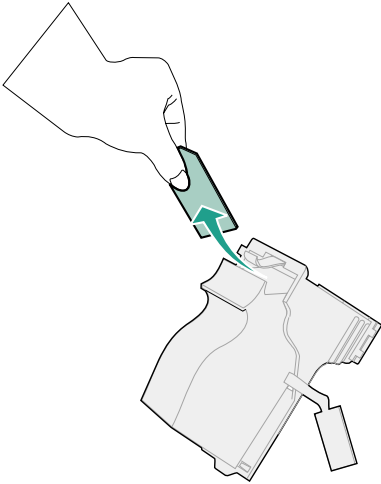
Do not remove the ink cartridges from the printheads.



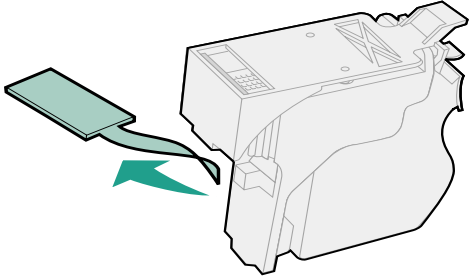
Printhead with color (CMY) ink cartridges

Printhead with black (K) ink cartridge

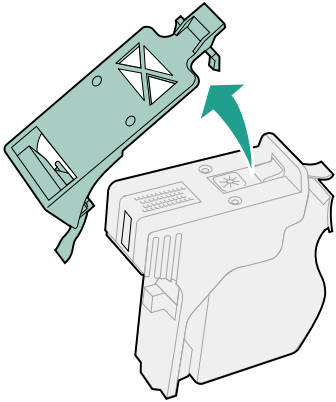
5 Remove the plastic cushioning from the black ink printhead.

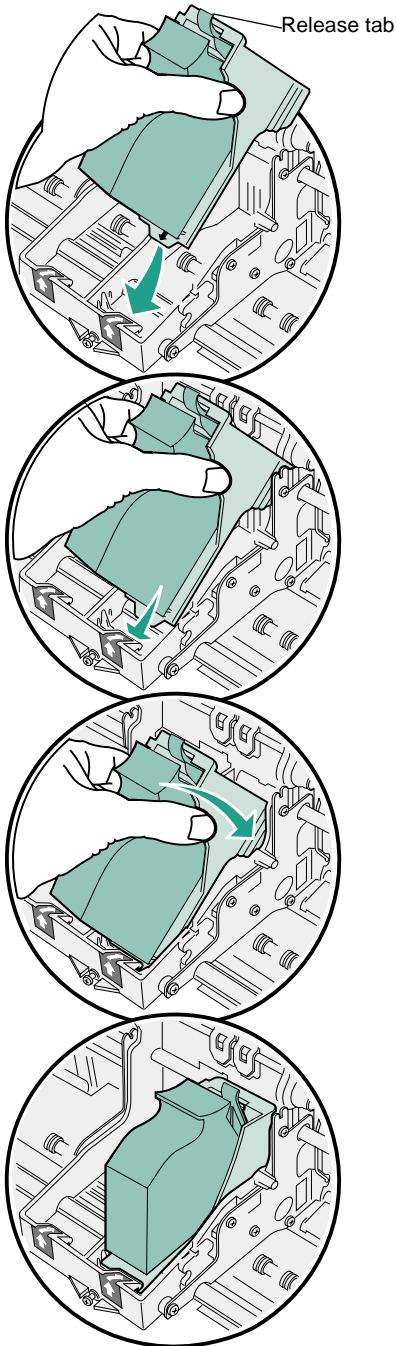


- 6** Pull out the tape between the ink cartridge and the printhead.



- 7** Gently pull off the plastic cap from the bottom of the printhead.





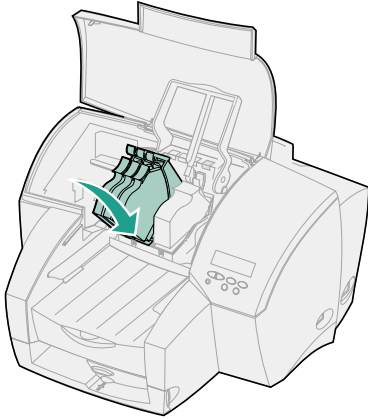
8 Hold the black printhead as shown.

Avoid touching the release tab on the ink cartridge or it will pop out of the printhead.

9 Insert the printhead tab *under* the small arrow on the right carrier slot.

10 Rotate the printhead toward the back of the printer until it snaps down into position

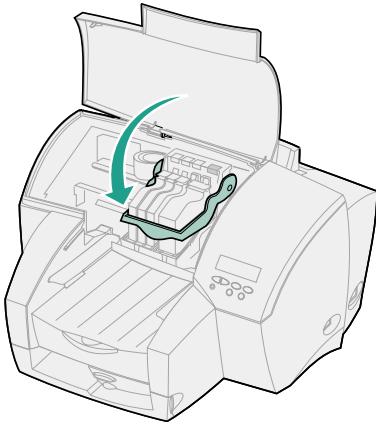
- 11** Repeat steps 5 through 10 to install the color ink printhead in the left slot.



- 12** Pull the carrier handle all the way down to lock the printheads in place.

If the handle does not close easily, make sure the printhead is installed *under* the slot (see step 9).

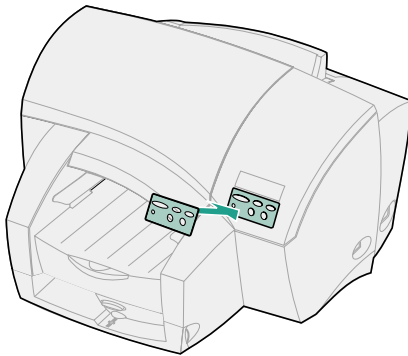
- 13** Close the front cover.



Step 7: Attach the operator panel overlay

If English is not your preferred language, attach the overlay for your language to the printer operator panel.

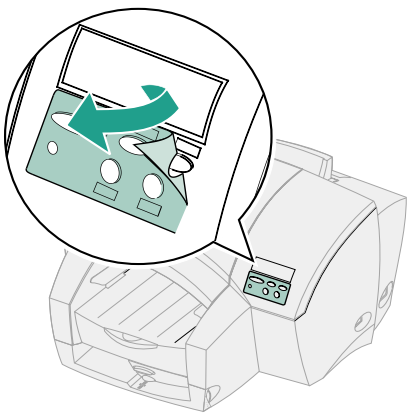
1 Peel the protective backing off the overlay.



2 Align the holes in the overlay with the buttons on the operator panel and press the overlay into place.

3 Peel the protective covering away from the overlay.

Instructions for changing the language on your operator panel display are in Step 8 on page 26.



Step 8: Change the language

If English is not your preferred language, change the language of the text displayed on the operator panel before printing a menu settings page.

- 1** Make sure your printer is turned on and all attached peripherals are plugged in.
- 2** Press **Menu>** until **Setup Menu** appears on the operator panel display.
- 3** Press **Select**.
- 4** Press **Menu>** until **Display Language** appears on the second line of the display.
- 5** Press **Select**.
- 6** Press **Menu>** until the language you need appears on the second line of the display.
- 7** Press **Select**.

The printer resets and displays text in the new language.

- 8** Press **Return** to go back to **Ready**.

Step 9: Verify setup

To list the current printer settings and verify that options are installed correctly, print a menu settings page.

- 1 Make sure your printer is turned on.**
- 2 Press Menu> until Utilities Menu appears on the operator panel display.**
- 3 Press Select.**
- 4 Print Menus appears on the display.**
- 5 Press Select.**

A page listing your current printer settings and installed options prints.

- 6 Check the page to make sure the options you installed are listed.**

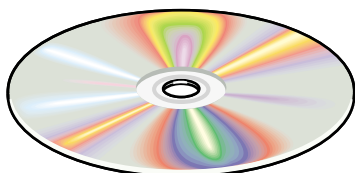
If an option is not listed, turn off the printer, unplug the power cord, and reinstall the option.

- 7 Press Return to go back to Ready.**



If you installed the tray 2 or multipurpose feeder option, be sure to update your printer configuration through your Windows printer driver. Refer to “Adding new hardware options” on the *User's Guide* CD for instructions.

Step 10: Load printer drivers and MarkVision



The *Drivers, MarkVision and Utilities* CD that shipped with your printer includes printer drivers for Windows and Macintosh environments, card stock and label printing guidelines, and a *Technical Reference* for printer commands and specifications.

If your computer does not have a CD-ROM drive, visit our Web site at www.lexmark.com to download printer drivers, ColorSync profiles, watermark files, Help files, a Help library and status reporting tools.

Refer to the CD Readme for a complete list of drivers included on the CD.

If you are using a Macintosh printer driver, go to page 31.

If you are using a parallel/IEEE 1284 cable, insert the *Drivers, MarkVision and Utilities* CD and skip to step 10.

If you are using a USB cable with Windows 98, Windows Me or Windows 2000, follow the instructions below to install a USB port driver and a Windows printer driver:

1 Turn your computer off and back on to reboot.

The Microsoft Plug and Play Add New Hardware Wizard launches. If you are using Windows 98 or Windows Me, continue with step 2, otherwise skip to step 9.

2 Click **Next**.

- 3** Click **Next** again to search for a driver.
- 4** Insert the *Drivers, MarkVision and Utilities* CD and check **Specify a Location** to tell the computer where to find the USB port driver on the CD. Uncheck any other boxes.
- 5** Use **Browse** or type in the path with the drive letter of the CD-ROM drive, the Win98USB directory, and the language you are using. For example, D:\Win98USB\English.

- 6** Click **Next**.

The computer is ready to install the USB port driver.

- 7** Click **Next**.

- 8** Click **Finish**.

An Add New Hardware Wizard launches to install a printer driver.

- 9** Click **Cancel** and close the Plug and Play screen.
- 10** If the *Drivers, MarkVision and Utilities* CD does not automatically launch, select the CD-ROM drive and double-click SETUP.EXE.
- 11** When the Drivers, MarkVision and Utilities screen appears, click **Printer Software**.
- 12** Click the CD icon to install the version of software on the CD.
- 13** Click **Agree** to accept the license agreement.
- 14** Click **Local Printer Install** if your printer is connected directly to your computer and then click **Next**.
 - 14a** Click the Lexmark J110 printer and select a printer port.

14b Click **Finish Installation**.

When installation is complete, click **OK**. If you get a message to restart your computer, choose **restart it later**.

Before exiting the drivers CD, click **Printer Software** if you want to install the status window, which monitors your supplies.

15 Click **Install the version of software on the CD**.

16 Click **Agree** to accept the license agreement.

17 Under **Advanced Install Options**, select **Custom Install**.

18 Click **Next**.

If you are using Windows NT 4.0 or Windows 2000, continue with step 19, otherwise skip to step 21.

19 Click where you want to install the software (the default is local computer).

20 Click **Next**.

21 Make sure **Bi-Di Support for Drivers** is checked and **Printer Drivers** is *not* checked.

22 Click **Next**.

Make sure the status window is selected.

23 Click **Finish Installation**.

When installation is complete, click **OK** and exit the CD.

If you are using Windows 95/98 or Windows Me, reboot your computer now.

Installing a Macintosh printer driver

- 1 Insert the CD into your computer.
- 2 Double-click to open the folder for your language.
- 3 Open the Lexmark Installer.
- 4 Click **Continue**.
- 5 Click **Agree** to accept the license agreement.
- 6 Scroll down to select **Custom Install**.
- 7 Click **Lexmark J110**.
- 8 Click the **Install** button.
- 9 Click the **Quit** button.

The **Lexmark Extras Window** appears.

- 10 Drag the Lexmark icon and the CD icon to the trash can to remove the CD, which closes all of the open windows except the Extras Window.
- 11 Close the Extras Window.
- 12 To add the printer to your desktop, select **Chooser** from the Apple menu.
- 13 Select the Lexmark J110 icon.
- 14 If needed, select the correct AppleTalk zone (not required if the printer is connected to the computer with a USB cable).
- 15 Select the Lexmark J110 printer from the right hand list.
- 16 Close the Chooser.

An alert that you changed your current printer appears.

- 17 Click **OK**.

- 18** From the **File** menu, select **Page Setup** and click **OK** so your computer recognizes your new default printer.

Installing network support

For TCP/IP, NetWare, and Windows NT Servers, refer to the documentation shipped with the MarkNet external print server.

For AppleTalk and MarkNet only

If you installed a MarkNet external print server and plan to print AppleTalk jobs, there is an extra step you need to take before anyone can use the printer. Refer to the “AppleTalk and MarkNet print server” section on the *User's Guide* CD.

Congratulations!

You are finished setting up your printer and are ready to print. Use the *User's Guide* CD in the back of this book for:

- Printing tips
- Changing menu settings from the Windows driver, Macintosh driver, and the operator panel
- Replacing ink cartridges, printheads and the PerfectFinish cartridge
- Clearing paper jams
- Troubleshooting



Warning: If you move the printer, **keep it level.**

Troubleshooting tips

Installing the PerfectFinish cartridge

Problem	Action
You get a PerfectFinish Empty message, even though you just installed a new cartridge	<p>The cartridge is not installed correctly.</p> <ul style="list-style-type: none"> Remove the cartridge and re-install it, making sure it is under the latches. Press Go to clear the message.
You get a Printer Calibrating message	The PerfectFinish cartridge applicator is refilling. You may hear clicking sounds as it refills.
Loading paper	
Problem	Action
Media does not feed from tray 2	The printer is not on the 250-sheet drawer correctly. Gently rock the printer back and forth until both sides of the printer are lined up with the drawer.
When you print a list of the options you installed, tray 2 does not appear	The printer is not on the 250-sheet drawer correctly. Gently rock the printer back and forth until both sides of the printer are lined up with the drawer.
Your job prints from the wrong paper source or on the wrong paper	<ul style="list-style-type: none"> Check the Paper Type setting in the Paper Menu on the printer operator panel and in the printer driver.
You cannot see or reach a paper jam	<ul style="list-style-type: none"> Press Menu> continuously to advance the paper incrementally until you can reach it and pull it out.
You get a Check Tray 1 paper jam message	<p>The paper jammed from tray 1.</p> <ul style="list-style-type: none"> Remove the tray and look inside the opening. Gently pull the jammed paper toward you. Reinstall the tray and press Go.

Troubleshooting tips

<p>You get a Check Tray 2 paper jam message</p>	<p>The paper jammed from tray 2.</p> <ul style="list-style-type: none"> • Remove tray 2. • Gently pull the paper toward you. • If you feel resistance, push the paper down, and then pull it toward you. • Repeat pushing and pulling the paper until it is released. • Reinstall the tray and press Go.
<p>You get a Check MP Feeder paper jam message</p>	<p>The paper jammed in the multipurpose feeder.</p> <ul style="list-style-type: none"> • Pull the paper release lever toward the media and hold it. • Pull the media straight up. <p>If the paper jammed inside the printer:</p> <ul style="list-style-type: none"> • Remove the multipurpose feeder. • Pull out the jammed paper. • Reinstall the multipurpose feeder and press Go.
<h3>Attaching cables</h3>	
<h4>Problem</h4>	<h4>Action</h4>
<p>Unexpected characters print or characters are missing</p>	<ul style="list-style-type: none"> • Make sure the parallel cable or USB cable is firmly plugged into the printer. • Make sure the Ready message appears on the operator panel display before printing a job. Press Go to return the printer to Ready status. • Make sure there is media loaded in the printer. Press Go to return the printer to Ready status.
<h3>Installing the printheads</h3>	
<h4>Problem</h4>	<h4>Action</h4>
<p>You get a Missing Printhead message</p>	<p>The printhead is not installed correctly. Check that the printhead tab is installed under the arrow on the carrier slot.</p>
<p>You need to re-install a printhead, but the carrier is at the far left</p>	<ul style="list-style-type: none"> • Close the cover. • Press Menu> until the Utilities Menu appears. • Press Select. • Press Menu> until you see Change Printhead. • Press Select. • Open the cover. The carrier moves to the center of the printer.

Troubleshooting tips

You get a 93X Service message	<ol style="list-style-type: none">1 Turn the printer off and back on. Remember! Always turn the printer off at the on/off switch, never at a power strip.2 Open the printer cover.3 Raise the carrier handle up and back down to reposition the printheads.4 Close the cover.5 Turn the printer off and back on.6 If this does not clear the message, try steps 1-5 again.7 If the 93X service message remains, try wiping the printhead tab circuit. See <i>Cleaning the Printheads</i> on the <i>User's Guide</i> CD for more information.
The printer is printing, but the page is blank	Make sure you removed all tape and the plastic cap from the printhead.
Print quality is unsatisfactory.	Refer to <i>Solving Printer Problems</i> on the <i>User's Guide</i> CD.

Statement of limited warranty

Lexmark International, Inc., Lexington, KY

This warranty applies to the United States and Canada. For customers outside the U.S. and Canada, refer to the country-specific warranty information that came with your printer.

Lexmark J110

This statement of limited warranty applies to this product if it was originally purchased for your use, and not for resale, from Lexmark or a Lexmark remarketer, referred to in this statement as “Remarketer.”

Warranty

Lexmark warrants that this product:

- Is manufactured from new parts or new and serviceable used parts which perform like new parts
- Is free from defects in material and workmanship
- Conforms to Lexmark’s official published specifications
- Is in good working order

If this product does not function as warranted during the warranty period, contact a Remarketer or Lexmark for repair without charge.

If this product is a feature or option, this statement applies only when that feature or option is used with the product for which it was designed. To obtain warranty service, you may be required to present the feature or option with the product.

If you transfer this product to another user, warranty service under the terms of this statement is available to that user for the remainder of the warranty period. You should transfer proof of original purchase and this statement to that user.

Warranty service

The warranty period is 12 months and starts on the date of original purchase as shown on the purchase receipt.

To obtain warranty service you may be required to present proof of original purchase. Warranty service will be provided at a Lexmark designated location. You may be required to deliver your product to the Remarketer or Lexmark, or ship it prepaid and suitably packaged to a Lexmark designated location.

You are responsible for loss of, or damage to, a product in transit to the designated location.

When warranty service involves the exchange of a product or part, the item replaced becomes the property of the Remarketer or Lexmark. The replacement may be a new or repaired item. The replacement item assumes the remaining warranty period of the original product.

Replacement is not available to you if the product you present for exchange is defaced, altered, in need of a repair not included in warranty service, or damaged beyond repair. Also, such product must be free of any legal obligation or restrictions that prevent its exchange.

Before you present this product for warranty service, remove all programs, data, and removable storage media.

For further explanation of your warranty alternatives and the nearest Lexmark authorized servicer in your area, please contact Lexmark at 1-800-539-6275, or on the World Wide Web at www.lexmark.com.

Free remote technical support is provided for this product throughout its warranty period. Lexmark offers a variety of extended warranty programs that include an extension of technical support. For products no longer covered by a Lexmark warranty, technical support may only be available for a fee.

Extent of warranty

We do not warrant uninterrupted or error-free operation of a product.

Warranty service does not include repair of failures caused by:

- Modification or attachments
- Accidents or misuse
- Unsuitable physical or operating environment
- Maintenance by anyone other than Lexmark or a Lexmark authorized servicer
- Operation of a product beyond the limit of its duty cycle
- Failure to have installed a maintenance kit as specified (if applicable)
- Use of print media outside of Lexmark specifications
- Use of other than Lexmark supplies (such as inkjet cartridges, ink, pre-coating fluid and printheads)
- Use of other than Lexmark product or component

ALL EXPRESS AND IMPLIED WARRANTIES, INCLUDING THE IMPLIED WARRANTIES OF MERCHANTABILITY AND FITNESS FOR A PARTICULAR PURPOSE, ARE LIMITED IN DURATION TO THE WARRANTY PERIOD. NO WARRANTIES, EXPRESS OR IMPLIED, WILL APPLY AFTER THIS PERIOD.

Limitation of liability

Your sole remedy under this statement of limited warranty is set forth in this section. For any claim concerning performance or nonperformance of Lexmark or a Remarketer for this product under this statement of limited warranty, you may recover actual damages up to the limit set forth in the following paragraph.

Lexmark's liability for actual damages from any cause whatsoever will be limited to the greater of 1) \$5,000 or 2) the amount you paid for the product that caused the damages. This limitation of liability will not apply to claims by you for bodily injury or damage to real property or tangible personal property for which Lexmark is legally liable. In no event will Lexmark be liable for any lost profits, lost savings, incidental damage, or other economic consequential damages. This is true even if you advise Lexmark or a Remarketer of the possibility of such damages. Lexmark is not liable for any claim by you based on a third-party claim.

This limitation of remedies also applies to any developer of materials supplied to Lexmark. Lexmark's and the developer's limitations of remedies are not cumulative. Such developer is an intended beneficiary of this limitation.

Additional rights

Some states do not allow limitations on how long an implied warranty lasts, or do not allow the exclusion or limitation of incidental or consequential damages. If such laws apply, the limitations or exclusions contained in this statement may not apply to you.

This warranty gives you specific legal rights. You may also have other rights which vary from state to state.

Viewing the *User's Guide* CD

Insert the CD into the CD-ROM drive. If the CD does not launch automatically:

- 1** Select your CD-ROM drive.
- 2** Double-click **START.PDF** (or double-click the **CD** icon on your desktop and then click **START.PDF** if you are using a Macintosh computer).

You must have a copy of Adobe Acrobat Reader Version 4.0 or later to view the *User's Guide* CD.

If Acrobat Reader is not installed on your operating system, visit the Adobe Web site at www.adobe.com to download the Acrobat Reader version you need.

LEXMARKTM

Lexmark and Lexmark with diamond design are trademarks of Lexmark International, Inc., registered in the United States and/or other countries.

© 2000 Lexmark International, Inc.

740 West New Circle Road
Lexington, Kentucky 40550