

C1000	8C	C2231	6C	R3633	7C
C1001	7B	C2232	5B	R3634	7C
C1002	7B	C2235	6A	R3640	6B
C1003	7B	C2320	5C	S2700	6B
C1005	6C	D1000	8C	V1500	7B
C1011	7B	D1201	7A	V2302	5C
C1039	8C	D1203	8B	V2303	6B
C1040	7B	N1501	8B	V2821	6B
C1110	7C	R1001	7B	X1000	8C
C1120	7B	R1006	8C	X2200	2B
C1121	7B	R1014	7B	X2202	5B
C1122	8C	R1018	7B	X2705	6B
C1123	7B	R1021	6C	Z1000	7B
C1124	7B	R1023	6B	Z1500	8B
C1125	8C	R1024	7C		
C1126	7B	R1025	7C		
C1127	8C	R1029	6C		
C1128	7C	R1032	8C		
C1129	7B	R1040	7B		
C1130	7C	R1041	7B		
C1131	8C	R1043	7B		
C1132	8B	R1048	8B		
C1133	7C	R1051	8B		
C1134	8B	R1052	8B		
C1135	7B	R1130	7B		
C1136	8B	R1200	7A		
C1137	8B	R1210	7A		
C1139	8B	R1211	7A		
C1140	7B	R1320	7A		
C1141	7C	R1501	8B		
C1200	7A	R1502	8B		
C1201	7A	R1503	8B		
C1202	7A	R1504	8B		
C1203	7A	R1505	9B		
C1204	7A	R1506	7B		
C1205	7A	R1510	8B		
C1207	6A	R1511	9B		
C1208	8A	R1514	8B		
C1209	8B	R1515	9B		
C1211	7A	R1591	8B		
C1381	6A	R2310	6B		
C1382	6A	R2311	6C		
C1515	9B	R2729	6B		
C2201	5C	R2821	6B		
C2203	5B	R2872	6A		

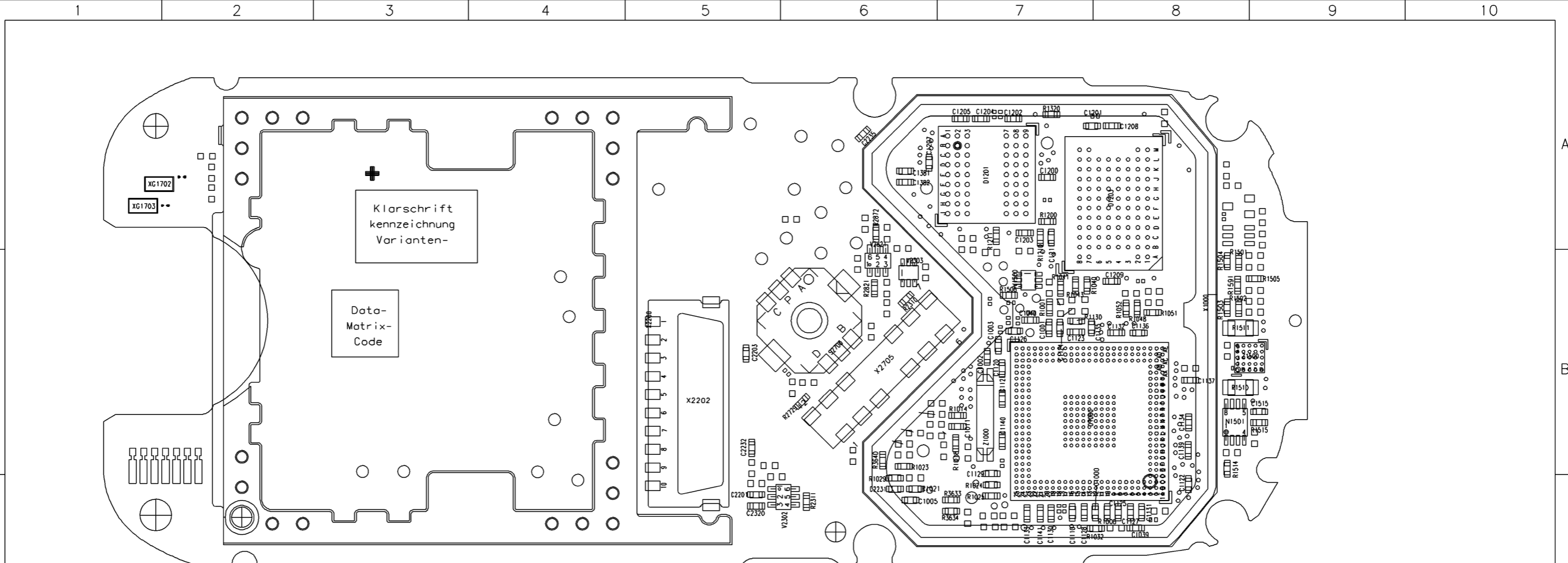
Confidential
Copyright © Siemens AG

Achtung : Höhenprofil C24-----42 (gilt nur fuer Entwicklung)
Liefervarianten siehe : V24851-Z2000-A1--35

7	18316	20.08.2004	rba	DATE	21.10.2003	C65 Hera HIT Assembled B2.1 Layout WIRING DIAGRAM (SOLDER SIDE 1)	3:1
6	18316	19.08.2004	rba	NAME	rba		
5	17606	03.08.2004	o1h	APPR'D			
4	16689	06.07.2004	rba	STD			
3	14616	30.04.2004	o1h	MP UC RD LPD AAL		SIEMENS AG	SHEET 1+
2	14616	29.04.2004	o1h		72621		
1	14345	21.04.2004	o1h				
VERS.	CHANGE NUMBER	DATE	NAME	(Created by BOM number: A5B00900149910-18316)			

PROPRIETARY DATA, COMPANY CONFIDENTIAL
ALL RIGHTS RESERVED

ALS BETRIEBSGEHE IMNIS ANVERTRAUT
ALLE RECHTE VORBEHALTEN



C1000	8C	C2231	6C	R3633	7C
C1001	7B	C2232	5B	R3634	7C
C1002	7B	C2235	6A	R3640	6B
C1003	7B	C2320	5C	S2700	6B
C1005	6C	D1000	8C	V1500	7B
C1011	7B	D1201	7A	V2302	5C
C1039	8C	D1203	8B	V2303	6B
C1040	7B	N1501	8B	V2821	6B
C1110	7C	R1001	7B	X1000	8C
C1120	7B	R1006	8C	X2200	2B
C1121	7B	R1014	7B	X2202	5B
C1122	8C	R1018	7B	X2705	6B
C1123	7B	R1021	6C	Z1000	7B
C1124	7B	R1023	6B	Z1500	8B
C1125	8C	R1024	7C		
C1126	7B	R1025	7C		
C1127	8C	R1029	6C		
C1128	7C	R1032	8C		
C1129	7B	R1040	7B		
C1130	7C	R1041	7B		
C1131	8C	R1043	7B		
C1132	8B	R1048	8B		
C1133	7C	R1051	8B		
C1134	8B	R1052	8B		
C1135	7B	R1130	7B		
C1136	8B	R1200	7A		
C1137	8B	R1210	7A		
C1139	8B	R1211	7A		
C1140	7B	R1320	7A		
C1141	7C	R1501	8B		
C1200	7A	R1502	8B		
C1201	7A	R1503	8B		
C1202	7A	R1504	8B		
C1203	7A	R1505	9B		
C1204	7A	R1506	7B		
C1205	7A	R1510	8B		
C1207	6A	R1511	9B		
C1208	8A	R1514	8B		
C1209	8B	R1515	9B		
C1211	7A	R1591	8B		
C1381	6A	R2310	6B		
C1382	6A	R2311	6C		
C1515	9B	R2729	6B		
C2201	5C	R2821	6B		
C2203	5B	R2872	6A		

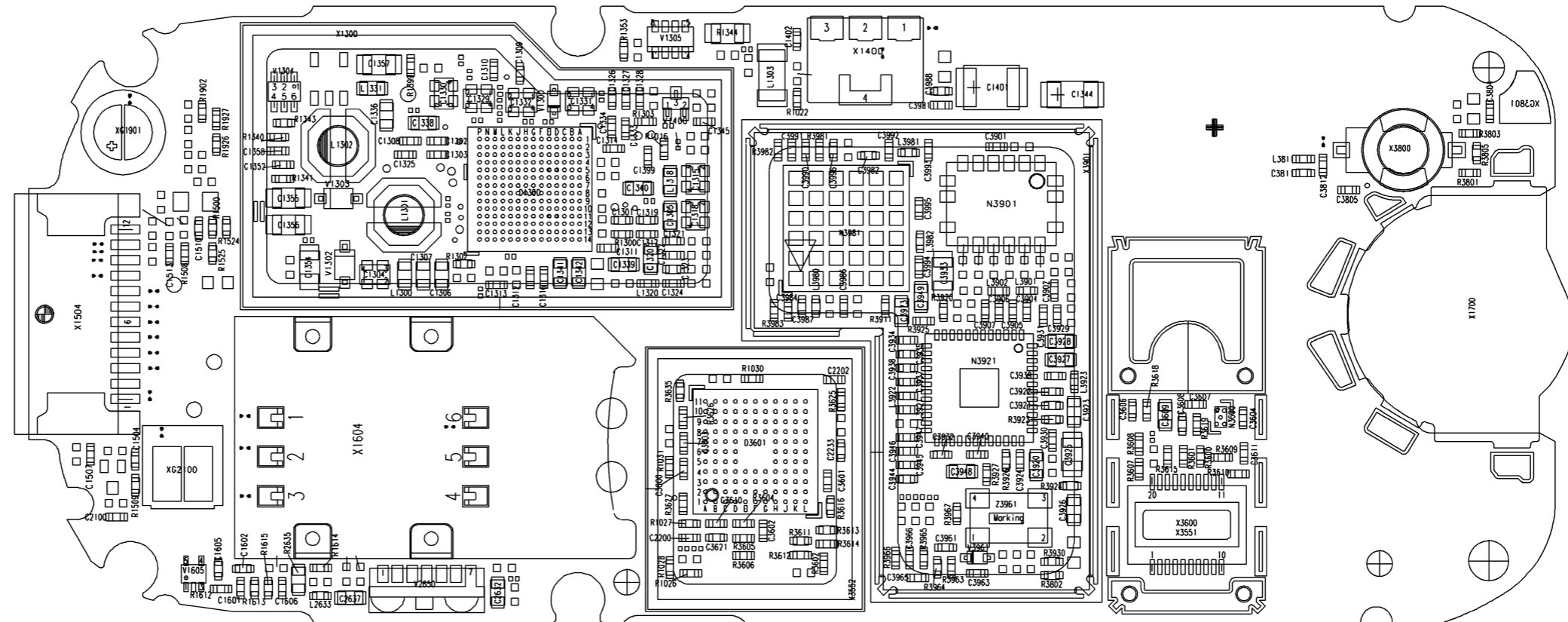
Confidential
Copyright © Siemens AG

Achtung : Höhenprofil C24-----42 (gilt nur fuer Entwicklung)
Liefervarianten siehe : V24851-Z2000-A1--35

7	18316	20.08.2004	rba	DATE	21.10.2003	C65 Hera HIT Assembled B2.1 Layout WIRING DIAGRAM (SOLDER SIDE 1)	3:1
6	18316	19.08.2004	rba	NAME	rba		
5	17606	03.08.2004	o1h	APPR'D			
4	16689	06.07.2004	rba	STD		SIEMENS AG	SHEET 3+
3	14616	30.04.2004	o1h	MP UC RD LPD AAL			
2	14616	29.04.2004	o1h			72621	
1	14345	21.04.2004	o1h				
VERS.	CHANGE NUMBER	DATE	NAME	(Created by BOM number: A5B00900149910-18316)			

PROPRIETARY DATA, COMPANY CONFIDENTIAL
ALL RIGHTS RESERVED

ALS BETRIEBSGEHEIMNIS ANVERTRAUT
ALLE RECHTE VORBEHALTEN



C1301	5A	C1357	4A	C3925	7B	L1320	5B	R3601	8B	V1400	5A
C1302	4A	C1358	3A	C3926	7B	L1331	4A	R3602	6C	V1605	3C
C1303	4A	C1399	5A	C3927	7B	L2633	4C	R3604	6C	V2650	4C
C1304	4B	C1401	7A	C3928	7B	L3811	9A	R3605	6C	V3961	7C
C1305	5B	C1402	6A	C3929	7B	L3901	7B	R3606	6C	X1300	6B
C1306	4B	C1504	3B	C3930	7B	L3902	7B	R3607	8B	X1400	7A
C1307	4B	C1507	2B	C3931	7B	L3921	7B	R3608	8B	X1504	3B
C1308	4A	C1510	3B	C3932	7B	L3922	7B	R3609	8B	X1604	3B
C1309	5A	C1513	3B	C3933	7B	L3923	7B	R3610	8B	X1700	10B
C1310	5A	C1601	3C	C3934	7B	L3980	6B	R3611	6C	X3551	8B
C1311	5B	C1602	3C	C3935	7B	L3981	7A	R3612	6C	X3552	5B
C1312	5B	C1605	3C	C3937	7B	L3982	7B	R3613	6C	X3600	8C
C1313	4B	C1606	3C	C3938	7B	N3600	8B	R3614	6C	X3800	9A
C1314	5A	C2100	3C	C3939	7B	N3901	7A	R3615	8B	X3901	8C
C1315	6A	C2200	6C	C3940	7B	N3921	7B	R3616	6C	Z3961	7C
C1316	5B	C2202	6B	C3944	7B	N3981	6B	R3618	8B		
C1317	5B	C2233	6B	C3945	7B	R1016	5A	R3619	8B		
C1318	6A	C2632	5C	C3946	7B	R1022	6A	R3625	6B		
C1319	5A	C2637	4C	C3947	7B	R1026	5C	R3626	5B		
C1320	5B	C3600	5B	C3948	7B	R1027	6C	R3627	5C		
C1321	5B	C3601	6B	C3949	7B	R1028	5C	R3635	5B		
C1322	5B	C3602	6C	C3961	7C	R1030	6B	R3801	9A		
C1323	5B	C3603	5B	C3963	7C	R1031	5B	R3802	7C		
C1324	5B	C3604	8B	C3965	7C	R1300	5B	R3803	9A		
C1325	4A	C3606	8B	C3966	7C	R1302	4B	R3805	9A		
C1326	5A	C3607	8B	C3973	7B	R1303	5A	R3911	6B		
C1327	5A	C3608	8B	C3981	7A	R1340	3A	R3920	7B		
C1328	5A	C3609	8B	C3982	6A	R1341	3A	R3923	7B		
C1329	4A	C3610	6C	C3984	6B	R1343	3A	R3924	7B		
C1330	4A	C3611	8B	C3986	6B	R1344	6A	R3925	7B		
C1331	5A	C3621	6C	C3987	6B	R1353	5A	R3926	7B		
C1332	5A	C3804	10A	C3988	7A	R1399	4A	R3927	7B		
C1333	5A	C3805	9A	C3990	6A	R1500	3A	R3930	7C		
C1334	5A	C3811	9A	C3991	6A	R1508	3B	R3963	7C		
C1336	4A	C3812	9A	C3992	6A	R1509	3B	R3964	7C		
C1338	4A	C3901	7A	C3993	7A	R1524	3A	R3965	7C		
C1339	5B	C3902	7B	C3994	7B	R1525	3B	R3966	7C		
C1340	5A	C3904	7B	C3995	7A	R1612	3C	R3967	7C		
C1341	5B	C3905	7B	C3996	6A	R1613	3C	R3981	6A		
C1342	5B	C3906	7B	D1300	5A	R1614	4C	R3982	6A		
C1344	7A	C3907	7B	D3601	6B	R1615	3C	R3983	6B		
C1345	6A	C3920	7B	L1300	4B	R1902	3A	V1300	5A		
C1352	3A	C3921	7B	L1301	4B	R1926	3A	V1302	4B		
C1354	4B	C3922	7B	L1302	4A	R1927	3A	V1303	4A		
C1355	4A	C3923	7B	L1303	6A	R2635	4C	V1304	3A		
C1356	4A	C3924	7B	L1318	5A	R3600	8B	V1305	5A		

Confidential
Copyright © Siemens AG

Achtung : Höhenprofil C24-----42 (gilt nur fuer Entwicklung)
Liefervarianten siehe : V24851-Z2000-A1--35

7	18316	20.08.2004	rba	DATE	21.10.2003	C65 Hera HIT Assembled B2.1 Layout WIRING DIAGRAM (SOLDER SIDE 2)	3:1
6	18316	19.08.2004	rba	NAME	rba		
5	17606	03.08.2004	o1h	APPR'D			
4	16689	06.07.2004	rba	STD		SIEMENS AG	SHEET 4-
3	14616	30.04.2004	o1h	MP UC RD LPD AAL			
2	14616	29.04.2004	o1h			72621	
1	14345	21.04.2004	o1h				
VERS.	CHANGE NUMBER	DATE	NAME	(Created by BOM number : A5B00900149910-18316)			

Proprietary data, company confidential.
All rights reserved

Als Betriebsgeheimnis anvertraut
Alle Rechte vorbehalten

1	2	3	4	5
HIERARCHY			SHEET	PDF-SHEET
A5B00900149703-14345			index	sheet 1
			netlist1	sheet 2
			poslist1	sheet 3
			page1	---
			sheet1	sheet 4
			sheet2	sheet 5
			sheet3	sheet 6
			sheet4	sheet 7
			sheet5	sheet 8
			sheet6	sheet 9
			sheet7	sheet 10
			sheet8	sheet 11
			sheet9	sheet 12
			sheet10	sheet 13

Confidential
Copyright © Siemens AG

8	18316	20.08.2004	rba	DATE	21.10.2003	C65 Hera HIT Assembled B2.1 Layout TOP HIERARCHY LEVEL SCHEMATIC	1:1
7	18316	19.08.2004	rba	USER	rba		
6	17606	03.08.2004	olh	APPR'D			
5	16689	06.07.2004	rba	MP UC RD LPD AAL			
4	14989	13.05.2004	olh	Siemens AG	72620	index	
3	14616	30.04.2004	olh				
2	14616	29.04.2004	olh				
VERS.	CHANGE NUMBER	DATE	NAME				(Created by BOM number: A5B00900149910-18316)

Proprietary data, company confidential.
All rights reserved

Als Betriebsgeheimnis anvertraut
Alle Rechte vorbehalten

1.5V_DSP /sheet6 7 C /sheet7 8 B	/sheet5 13 E /sheet8 15 F	/sheet3 3 C /sheet3 13 C	CKE /sheet6 10 E /sheet6 15 E /sheet5 6 A	DISPLAY_RESET /sheet4 13 D /sheet4 10 D /sheet5 6 A /sheet8 10 A	IR_AC_RX /sheet5 14 E /sheet9 10 E	MICBIAS_F /sheet9 5 D /sheet8 5 F /sheet7 8 E	/sheet5 13 C /sheet7 3 F /sheet7 7 F	RF_AFC /sheet4 4 B /sheet4 2 B /sheet5 2 E /sheet1 15 B	/sheet5 2 E /sheet1 15 C	TBAT /sheet5 9 B /sheet5 13 A	VCXOEN_UC /sheet5 1 E /sheet7 3 D /sheet6 12 D /sheet6 12 A /sheet5 7 G
1.5V_UC /sheet6 7 D /sheet6 2 C /sheet7 8 B	AC_TX /sheet5 13 E /sheet8 15 F	CAMERA_DATA_CLK /sheet3 13 B /sheet3 2 D	CLK32 /sheet3 7 E /sheet5 5 B	DISPLAY_RS /sheet4 13 D /sheet4 10 D /sheet3 2 F /sheet8 10 A	IR_AC_TX /sheet5 14 E /sheet9 14 E	MICEA /sheet8 6 G /sheet8 9 E /sheet7 2 E	PM_I2S_DAC /sheet5 13 C /sheet7 3 F	RF_ANT_DET /sheet4 2 D /sheet4 4 D /sheet2 7 D /sheet5 6 A	/sheet4 2 A /sheet4 4 A /sheet5 7 B /sheet1 15 C	TVCO /sheet4 2 D /sheet4 4 D /sheet5 9 B /sheet5 14 A /sheet1 15 B	VDD_AFC /sheet6 4 B /sheet7 8 C
1.8V_CIF /sheet3 2 A /sheet7 10 B	ADV /sheet6 15 E /sheet6 12 A /sheet5 6 G	CAMERA_HSYNC /sheet3 3 C /sheet3 13 C	CS3 /sheet6 15 F /sheet5 7 G	DISP_CS1 /sheet3 4 G /sheet5 2 C	IR_SEL /sheet5 7 B /sheet9 14 E	MICEB /sheet8 6 F /sheet8 9 F /sheet7 2 E	PM_I2S_WA0 /sheet5 13 C /sheet7 7 F /sheet7 3 F	RF_TXONPA /sheet4 2 D /sheet4 4 D /sheet5 5 B /sheet1 1 F	/sheet4 2 D /sheet4 4 D /sheet5 5 B /sheet1 1 F	TX /sheet8 12 F /sheet8 11 E /sheet8 9 E	VDD_BRIGHT /sheet2 9 D /sheet1 9 F /sheet1 9 A /sheet1 9 A /sheet1 8 B /sheet1 11 D /sheet1 7 C /sheet1 9 B /sheet1 8 E /sheet1 9 A
1.8V_MEM1 /sheet6 13 F /sheet6 7 E /sheet6 13 F /sheet4 13 C /sheet4 10 C /sheet7 8 B /sheet7 10 B	AKKU_TYP /sheet5 13 A /sheet8 3 B	CAMERA_I2C_CLK /sheet3 8 E /sheet3 13 C	CS_FLASH /sheet6 12 A /sheet5 7 G	EXTBOOST_EN /sheet7 11 D /sheet7 8 D	KB_ON_OFF /sheet9 8 B /sheet7 2 C	MON1 /sheet5 3 D	PM_INT /sheet5 13 D /sheet7 7 F	RF_BAND_SW /sheet4 2 F /sheet4 4 F /sheet5 6 B /sheet1 6 F	/sheet4 2 F /sheet4 4 F /sheet5 6 B /sheet1 6 F	RTS /sheet8 12 F /sheet8 9 E	TX_GSM_OUT /sheet1 1 C /sheet1 6 F
1.8V_MEM2 /sheet6 11 A /sheet6 12 B /sheet6 9 B /sheet6 8 A /sheet7 7 D /sheet7 10 B /sheet7 8 B	BATT+ /sheet4 10 E /sheet4 13 E /sheet7 8 B /sheet7 10 B	CAMERA_I2C_DATA /sheet3 8 F /sheet3 13 C	CS_FLASH1 /sheet6 12 A /sheet5 7 G	FLASH_EN /sheet5 13 F /sheet8 8 F	KP_IN0 /sheet5 5 G /sheet9 8 B /sheet9 13 B	MON2 /sheet5 3 D	PM_RESET_1.8V /sheet6 12 B /sheet7 7 C	RF_CLK /sheet4 4 A /sheet4 2 A /sheet5 7 B /sheet1 15 C	/sheet4 4 A /sheet4 2 A /sheet5 7 B /sheet1 15 C	RX /sheet8 12 F /sheet8 9 E	VDD_BT /sheet1 1 C /sheet1 6 F
2.65V /sheet6 2 C /sheet6 5 B /sheet6 4 B /sheet6 4 B /sheet6 7 D /sheet5 15 D /sheet5 10 A /sheet5 3 F /page1 2 A /sheet9 10 F /sheet8 14 E /sheet8 10 G /sheet8 3 B /sheet7 8 B /sheet7 3 D	BATT+_F /sheet9 14 E /sheet9 2 B /sheet9 5 A /sheet9 8 C /sheet8 11 D /sheet8 12 D /sheet7 10 A /sheet7 3 B /sheet7 2 F /sheet7 3 C /page1 2 A /sheet7 3 A /sheet7 3 C /sheet7 2 B /sheet10 3 B /sheet10 3 B	CAM_SENSOR_PD /sheet3 6 E /sheet3 11 E	CAS /sheet6 12 E /sheet6 15 E /sheet5 6 G	FLASH_RESET /sheet6 12 A /sheet5 4 E	KP_IN1 /sheet5 5 G /sheet9 8 B /sheet9 13 B	MONO1_LP_OUT /sheet7 6 E /sheet7 3 E	PM_RESET_N /sheet5 3 E /sheet7 7 C	RF_DAT /sheet4 4 A /sheet4 2 A /sheet5 7 B /sheet1 15 C	/sheet4 4 A /sheet4 2 A /sheet5 7 B /sheet1 15 C	SDCLKI /sheet6 15 E /sheet6 8 D /sheet5 6 G	USB_D+ /sheet5 13 C /sheet8 15 F
2.9V /sheet6 2 B /sheet4 13 C /sheet4 10 C /sheet3 7 B /sheet9 8 C /sheet8 10 B /sheet7 8 B	BB_PM_SIN26M /sheet4 4 C /sheet4 2 C /sheet1 15 C /sheet7 3 E	CAM_SENSOR_RESET /sheet3 13 C /sheet3 6 E	D(0:15) /sheet6 15 B /sheet6 11 C /sheet6 12 E /sheet5 9 G	GND_MIC /sheet9 4 E /sheet8 9 E /sheet7 7 E /sheet7 7 G	KP_IN2 /sheet5 5 G /sheet9 8 B /sheet9 13 B	MONO2_LP_OUT /sheet7 6 E /sheet7 3 E	PM_RINGIN /sheet5 11 B /sheet7 3 E	RF_FE_DTR_DCS /sheet4 2 C /sheet4 4 C /sheet5 6 B /sheet1 15 C	/sheet4 2 C /sheet4 4 C /sheet5 6 B /sheet1 15 C	SENSE_IN1 /sheet7 3 D /sheet7 11 F	USB_MODE /sheet8 15 D /sheet7 8 B
2.9V_CIF /sheet3 8 B /sheet3 3 A /sheet3 3 A /sheet3 6 D /sheet3 3 E /sheet3 6 D /sheet3 3 E	BC0 /sheet6 10 D /sheet6 15 E /sheet5 7 G	CHARGE_CNTRL /sheet7 10 H /sheet7 6 D	D(3) /page1 4 C	HF_OUT /sheet2 4 C /sheet1 1 D	KP_IN3 /sheet5 5 G /sheet9 8 B /sheet9 13 B	MONO2_OUT /sheet9 6 G /sheet7 8 E	PM_RTC_INT /sheet5 3 E /sheet7 3 C	RF_FE_DTR_GSM /sheet4 4 C /sheet4 2 C /sheet5 6 B /sheet1 1 D	/sheet4 4 C /sheet4 2 C /sheet5 6 B /sheet1 1 D	SENSE_IN2 /sheet7 3 D /sheet7 11 F	USB_SWITCH_EN /sheet5 6 B /sheet8 11 E
A(0:24) /sheet6 15 E /sheet6 10 D /sheet6 8 F /sheet5 12 G	BFCLKI /sheet6 13 B /sheet5 6 G	CHARGE_SOURCE /sheet7 10 H /sheet7 6 D	DB(0:15) /sheet6 15 B /sheet6 11 C /sheet6 12 E /sheet5 9 G	HW_DET_BAND_SEL /sheet5 2 G /sheet5 3 D	KP_IN4 /sheet5 3 F /sheet9 8 B /sheet9 14 B	PCN_PA_IN /sheet1 1 F /sheet1 9 F	PM_SSC_CS /sheet5 6 B /sheet7 4 F	RF_I /sheet4 2 B /sheet4 4 B /sheet5 8 B /sheet1 15 D	/sheet4 2 B /sheet4 4 B /sheet5 8 B /sheet1 15 D	SIM_CLK /sheet5 11 A /sheet10 7 E	VAUDREGA /sheet7 8 C /sheet7 3 E /sheet7 3 C
AC_CTS /sheet5 13 E /sheet8 15 F	BFCLKO /sheet6 15 E /sheet6 13 B /sheet5 6 G	DB_ETMCLK /sheet5 3 D	D(3) /page1 4 C	HW_DET_MOB_TYPE1 /sheet5 2 F /sheet5 3 D	KP_OUT0 /sheet5 4 F /sheet9 8 B	PHANTOM_BUF_OUT /sheet8 9 E /sheet7 6 E	PM_SSC_MRST /sheet5 14 D /sheet7 6 F	RF_Q /sheet4 2 B /sheet4 4 B /sheet5 8 B /sheet1 15 D	/sheet4 2 B /sheet4 4 B /sheet5 8 B /sheet1 15 D	SIM_IO /sheet5 11 B /sheet10 7 E	VDD_RF1 /sheet4 4 E /sheet4 2 E /sheet1 8 F /sheet1 11 A /sheet7 8 C
AC_DCD /sheet5 5 B /sheet8 15 F /sheet8 8 G	BOOST_OUT /sheet7 10 E /sheet7 6 C	DB_RTCK /sheet5 2 D	DB(3) /page1 4 C	HW_DET_MOB_TYPE2 /sheet5 2 F /sheet5 3 D	KP_OUT1 /sheet5 4 F /sheet9 8 B	PIXEL_DATA0 /sheet3 3 C /sheet3 13 B	PM_SSC_MTSR /sheet5 14 D /sheet7 4 F	RF_QX /sheet4 4 B /sheet4 2 B /sheet5 8 B /sheet1 15 D	/sheet4 4 B /sheet4 2 B /sheet5 8 B /sheet1 15 D	SIM_RST /sheet5 11 B /sheet10 7 E	VDD_RTC /sheet6 2 B /sheet7 2 C /sheet7 8 B
AC_RTS /sheet5 13 E /sheet8 15 F	BREF /sheet5 10 B /sheet5 15 A	DB_TCK /sheet5 2 C /page1 4 B	DB(3) /page1 4 C	HW_DET_MOB_TYPE3 /sheet5 2 F /sheet5 3 D	KP_OUT2 /sheet5 4 E /sheet9 8 B	PIXEL_DATA1 /sheet3 3 C /sheet3 13 B	PM_SSC_SCLK /sheet5 14 D /sheet7 4 F	RF_RAMP1 /sheet4 2 C /sheet4 4 C /sheet5 7 A /sheet1 1 F	/sheet4 2 C /sheet4 4 C /sheet5 7 A /sheet1 1 F	STEPDOWN_GND /sheet7 7 F /sheet7 10 C /sheet7 3 B /sheet7 10 C /sheet7 11 C	VDD_SIM /sheet7 8 B /sheet10 7 E
AC_RX CAMERA_CLK	CAMERA_CLK	DB_TMS /sheet5 2 C /page1 4 B	DB(3) /page1 4 C	HW_DET_MOB_TYPE4 /sheet5 2 F /sheet5 3 D	KP_OUT3 /sheet5 4 E /sheet9 13 B	PIXEL_DATA2 /sheet3 3 C /sheet3 13 B	POWER /sheet8 9 E /sheet7 9 F /sheet7 8 F	RF_SIN26M /sheet4 2 C /sheet4 4 C	/sheet4 2 C /sheet4 4 C	STEREO1_OUT /sheet8 9 E /sheet7 6 E	VDD_USB /sheet6 2 C /sheet8 13 E /sheet7 8 B

Confidential
Copyright © Siemens AG

VERS.	CHANGE NUMBER	DATE	NAME	DATE	21.10.2003	C65 Hera HIT Assembled B2.1 Layout TOP HIERARCHY LEVEL SCHEMATIC	1:1
8	18316	20.08.2004	rba	USER	rba		
7	18316	19.08.2004	rba	APPR'D			
6	17606	03.08.2004	olh				
5	16689	06.07.2004	rba	MP UC RD LPD AAL			
4	14989	13.05.2004	olh				
3	14616	30.04.2004	olh	Siemens AG		72620	netlist1
2	14616	29.04.2004	olh				

(Created by BOM number: A5B00900149910-18316)

Proprietary data, company confidential.
All rights reserved.

Als Betriebsgeheimnis anvertraut
Alle Rechte vorbehalten

C1000 /sheet5 3 E	C1330-2 /sheet7 6 B	C2235 /sheet8 10 B	C3991 /sheet1 3 F	R1320 /sheet7 7 D	R3801 /sheet2 8 D	X1604 /sheet10 2 G
C1001 /sheet5 2 E	C1331-1 /sheet7 7 B	C2320 /sheet10 7 B	C3992 /sheet1 5 F	R1328 /sheet7 7 E	R3802 /sheet2 9 D	X1700 /sheet9 1 G
C1002 /sheet5 1 E	C1331-2 /sheet7 7 B	C2321 /sheet10 5 A	C3993 /sheet1 6 F	R1340 /sheet7 11 D	R3803 /sheet2 10 C	X2200 /sheet8 9 C
C1003 /sheet5 1 E	C1332-2 /sheet7 7 B	C2322 /sheet10 5 A	C3994 /sheet1 5 F	R1341 /sheet7 11 D	R3805 /sheet2 9 C	X2202 /sheet8 7 A
C1004 /sheet5 8 A	C1332-1 /sheet7 7 B	C2630 /sheet9 14 E	C3995 /sheet1 6 F	R1342 /sheet7 9 D	R3901 /sheet1 2 C	X2705 /sheet9 11 B
C1005 /sheet5 6 A	C1333 /sheet7 6 E	C2631 /sheet9 10 F	C3996 /sheet1 2 E	R1343 /sheet7 10 E	R3902 /sheet1 2 D	X3551 /sheet3 7 G
C1008 /sheet5 14 D	C1334 /sheet7 6 E	C2632 /sheet9 11 F	C3997 /sheet1 2 E	R1344 /sheet7 11 F	R3903 /sheet1 5 C	X3552 /sheet3 8 G
C1009 /sheet5 15 D	C1336 /sheet7 10 D	C2633 /sheet9 13 E	D1000-2 /sheet6 1 E	R1353 /sheet7 9 G	R3904 /sheet1 5 C	X3600 /sheet3 10 C
C1011 /sheet5 10 B	C1338 /sheet7 8 B	C2634 /sheet9 10 E	D1000-1 /sheet5 12 F	R1378 /sheet7 10 B	R3905 /sheet1 5 C	X3800 /sheet2 8 C
C1012 /sheet5 14 B	C1339 /sheet7 7 C	C2635 /sheet9 13 E	D1000-3 /sheet5 1 A	R1399 /sheet7 7 C	R3906 /sheet1 5 C	X3901 /sheet1 9 G
C1013 /sheet5 14 C	C1340 /sheet7 7 C	C2637 /sheet9 12 E	D1201 /sheet6 10 F	R1500 /sheet8 4 F	R3907 /sheet1 5 D	Z1000 /sheet5 2 E
C1014 /sheet5 15 C	C1341 /sheet7 7 C	C2821 /sheet10 7 C	D1203 /sheet6 10 D	R1501 /sheet8 4 F	R3908 /sheet1 5 D	Z1500 /sheet8 13 F
C1018 /sheet5 13 E	C1342 /sheet7 7 C	C2822 /sheet10 5 C	D1300 /sheet7 4 F	R1502 /sheet8 5 F	R3909 /sheet1 6 D	Z3961 /sheet1 12 B
C1019 /sheet5 13 E	C1343 /sheet7 7 C	C2823 /sheet10 5 C	D3601 /sheet3 4 F	R1503 /sheet8 8 E	R3910 /sheet1 6 D	
C1020 /sheet5 13 E	C1344 /sheet7 8 B	C3600 /sheet3 2 B	L1300 /sheet7 2 B	R1504 /sheet8 8 E	R3911 /sheet1 8 F	
C1038 /sheet5 13 F	C1345 /sheet7 8 C	C3601 /sheet3 3 B	L1301 /sheet7 10 C	R1505 /sheet8 6 F	R3920 /sheet1 6 D	
C1039 /sheet5 11 A	C1346 /sheet7 7 E	C3602 /sheet3 3 B	L1302 /sheet7 10 D	R1506 /sheet8 9 G	R3922 /sheet1 11 A	
C1040 /sheet5 3 E	C1347 /sheet7 7 E	C3603 /sheet3 3 B	L1303 /sheet7 2 B	R1508 /sheet8 8 F	R3923 /sheet1 10 B	
C1110 /sheet6 5 C	C1348 /sheet7 7 E	C3604 /sheet3 10 F	L1318 /sheet7 10 A	R1509 /sheet8 14 D	R3924 /sheet1 10 B	
C1120 /sheet6 2 C	C1349 /sheet7 4 E	C3605 /sheet3 11 C	L1320 /sheet7 7 C	R1510 /sheet8 14 E	R3925 /sheet1 7 D	
C1121 /sheet6 2 C	C1350 /sheet7 7 F	C3606 /sheet3 11 E	L1331 /sheet7 10 D	R1511 /sheet8 14 E	R3926 /sheet1 11 C	
C1122 /sheet6 2 B	C1352 /sheet7 11 D	C3607 /sheet3 11 F	L2633 /sheet9 13 E	R1512 /sheet8 7 D	R3927 /sheet1 12 D	
C1123 /sheet6 3 B	C1354 /sheet7 11 C	C3608 /sheet3 12 F	L3803 /sheet2 10 D	R1514 /sheet8 11 D	R3928 /sheet1 6 B	
C1124 /sheet6 3 B	C1355 /sheet7 11 D	C3609 /sheet3 13 F	L3811 /sheet2 6 C	R1515 /sheet8 12 D	R3929 /sheet1 7 B	
C1125 /sheet6 3 B	C1356 /sheet7 11 D	C3610 /sheet3 2 C	L3901 /sheet1 5 C	R1516 /sheet8 11 D	R3930 /sheet1 8 E	
C1126 /sheet6 4 C	C1357 /sheet7 10 D	C3611 /sheet3 2 D	L3902 /sheet1 5 C	R1524 /sheet8 6 G	R3931 /sheet1 7 B	
C1127 /sheet6 4 C	C1358 /sheet7 11 D	C3621 /sheet3 3 B	L3921 /sheet1 9 D	R1525 /sheet8 6 F	R3962 /sheet1 13 C	
C1128 /sheet6 5 C	C1360 /sheet7 10 F	C3803 /sheet2 10 D	L3922 /sheet1 9 D	R1591 /sheet8 9 E	R3963 /sheet1 14 C	
C1129 /sheet6 5 B	C1361 /sheet7 10 F	C3804 /sheet2 11 C	L3923 /sheet1 9 A	R1612 /sheet10 4 E	R3964 /sheet1 14 B	
C1130 /sheet6 5 C	C1362 /sheet7 11 F	C3805 /sheet2 8 D	L3924 /sheet1 9 E	R1613 /sheet10 4 E	R3965 /sheet1 14 B	
C1131 /sheet6 6 D	C1381 /sheet7 4 E	C3811 /sheet2 5 D	L3980 /sheet1 4 F	R1614 /sheet10 7 E	R3966 /sheet1 15 B	
C1132 /sheet6 6 D	C1382 /sheet7 4 E	C3812 /sheet2 6 D	L3981 /sheet1 5 F	R1615 /sheet10 4 E	R3967 /sheet1 15 C	
C1133 /sheet6 7 D	C1383 /sheet7 2 E	C3901 /sheet1 2 C	L3982 /sheet1 5 F	R1703 /sheet9 5 F	R3981 /sheet1 2 F	
C1134 /sheet6 7 D	C1384 /sheet7 2 E	C3902 /sheet1 2 D	N1330 /sheet7 11 D	R1704 /sheet9 5 F	R3982 /sheet1 2 F	
C1135 /sheet6 7 D	C1385 /sheet7 2 E	C3903 /sheet1 5 D	N1501 /sheet8 11 E	R1901 /sheet9 4 D	R3983 /sheet1 6 F	
C1136 /sheet6 6 E	C1386 /sheet7 2 E	C3904 /sheet1 6 C	N3600 /sheet3 11 F	R1902 /sheet9 4 E	S2700 /sheet9 13 B	
C1137 /sheet6 6 E	C1387 /sheet7 4 E	C3905 /sheet1 6 C	N3901 /sheet1 4 C	R1926 /sheet9 5 D	TP1246 /sheet6 10 B	
C1139 /sheet6 6 E	C1391 /sheet7 6 E	C3906 /sheet1 6 C	N3921 /sheet1 8 C	R1927 /sheet9 5 D	TP1247 /sheet6 8 A	
C1140 /sheet6 2 C	C1399 /sheet7 6 E	C3907 /sheet1 6 C	N3981 /sheet1 3 F	R2100 /sheet9 2 B	TP3600 /sheet3 11 E	
C1141 /sheet6 7 C	C1400 /sheet8 3 B	C3920 /sheet1 11 B	R101 /page1 3 C	R2101 /sheet9 1 C	TP3601 /sheet3 13 E	
C1200 /sheet6 8 B	C1401 /sheet8 4 B	C3921 /sheet1 9 A	R1000 /sheet5 2 F	R2102 /sheet9 2 D	TP1022 /sheet5 9 B	
C1201 /sheet6 9 B	C1402 /sheet8 4 B	C3922 /sheet1 8 B	R1001 /sheet5 2 G	R2103 /sheet9 3 C	TP1014 /sheet5 15 A	
C1202 /sheet6 12 G	C1405 /sheet8 4 B	C3923 /sheet1 9 B	R1006 /sheet5 3 E	R2104 /sheet9 3 C	TP1012 /sheet5 13 A	
C1203 /sheet6 12 G	C1426 /sheet8 2 B	C3924 /sheet1 11 B	R1012 /sheet5 7 B	R2200 /sheet8 8 B	TP1013 /sheet5 13 A	
C1204 /sheet6 12 G	C1502 /sheet8 6 F	C3925 /sheet1 10 B	R1014 /sheet5 10 B	R2300 /sheet10 4 B	TP3970 /sheet1 6 B	
C1205 /sheet6 12 G	C1504 /sheet8 4 D	C3926 /sheet1 11 B	R1015 /sheet5 9 B	R2301 /sheet10 4 C	TP3971 /sheet1 7 E	
C1206 /sheet6 9 B	C1506 /sheet8 9 F	C3927 /sheet1 9 B	R1016 /sheet5 13 A	R2310 /sheet10 4 A	TP3921 /sheet1 6 D	
C1207 /sheet6 13 G	C1507 /sheet8 6 D	C3928 /sheet1 8 B	R1018 /sheet5 13 A	R2311 /sheet10 6 B	TP3920 /sheet1 13 C	
C1208 /sheet6 9 B	C1508 /sheet8 5 F	C3929 /sheet1 8 B	R1021 /sheet5 15 A	R2632 /sheet9 12 E	TP3980 /sheet1 2 F	
C1209 /sheet6 9 B	C1509 /sheet8 6 F	C3930 /sheet1 10 B	R1022 /sheet5 15 B	R2635 /sheet9 13 E	TP1509 /sheet8 14 D	
C1210 /sheet6 11 B	C1510 /sheet8 7 F	C3931 /sheet1 7 C	R1023 /sheet5 15 C	R2727 /sheet9 8 B	TP1321 /sheet7 7 C	
C1211 /sheet6 9 B	C1512 /sheet8 7 F	C3932 /sheet1 11 D	R1024 /sheet5 15 D	R2728 /sheet9 8 C	TP1302 /sheet7 4 D	
C1220 /sheet6 9 A	C1513 /sheet8 9 F	C3933 /sheet1 7 D	R1025 /sheet5 15 D	R2729 /sheet9 8 C	TP1308 /sheet7 8 B	
C1301 /sheet7 2 B	C1514 /sheet8 8 F	C3934 /sheet1 8 E	R1026 /sheet5 3 C	R2820 /sheet10 8 C	TP1306 /sheet7 8 B	
C1302 /sheet7 4 A	C1515 /sheet8 12 D	C3935 /sheet1 8 E	R1027 /sheet5 3 C	R2821 /sheet10 7 C	TP1317 /sheet7 8 B	
C1303 /sheet7 4 B	C1522 /sheet8 5 F	C3936 /sheet1 9 F	R1028 /sheet5 3 C	R2872 /sheet10 4 C	TP1310 /sheet7 8 B	
C1304-1 /sheet7 2 B	C1523 /sheet8 5 D	C3937 /sheet1 9 E	R1029 /sheet5 3 C	R3600 /sheet3 6 F	TP1312 /sheet7 8 B	
C1304-2 /sheet7 2 B	C1524 /sheet8 7 F	C3938 /sheet1 9 E	R1030 /sheet5 5 A	R3601 /sheet3 6 F	TP1320 /sheet7 7 C	
C1305 /sheet7 10 B	C1527 /sheet8 11 D	C3939 /sheet1 8 B	R1031 /sheet5 6 A	R3602 /sheet3 13 C	TP1307 /sheet7 8 B	
C1306 /sheet7 3 B	C1528 /sheet8 14 D	C3940 /sheet1 13 D	R1032 /sheet5 7 B	R3603 /sheet3 3 D	TP1318 /sheet7 6 C	
C1307 /sheet7 3 B	C1541 /sheet8 6 F	C3941 /sheet1 13 D	R1038 /sheet5 10 A	R3604 /sheet3 13 B	TP1327 /sheet7 10 C	
C1308 /sheet7 3 D	C1601 /sheet10 4 F	C3942 /sheet1 13 D	R1039 /sheet5 9 A	R3605 /sheet3 13 B	TP1309 /sheet7 8 B	
C1309 /sheet7 4 D	C1602 /sheet10 5 F	C3943 /sheet1 13 D	R1040 /sheet5 2 F	R3606 /sheet3 13 B	TP1334 /sheet7 7 C	
C1310 /sheet7 4 D	C1603 /sheet10 5 F	C3944 /sheet1 12 E	R1041 /sheet5 3 F	R3607 /sheet3 13 B	TP1311 /sheet7 8 B	
C1311 /sheet7 4 D	C1604 /sheet10 5 F	C3945 /sheet1 13 E	R1042 /sheet5 2 F	R3608 /sheet3 13 B	V1300 /sheet7 6 A	
C1312 /sheet7 4 D	C1605 /sheet10 6 F	C3946 /sheet1 13 E	R1043 /sheet5 3 F	R3609 /sheet3 13 B	V1302 /sheet7 10 C	
C1313 /sheet7 4 D	C1606 /sheet10 5 F	C3947 /sheet1 13 E	R1045 /sheet5 3 G	R3610 /sheet3 13 B	V1303 /sheet7 11 D	
C1314 /sheet7 4 D	C1705 /sheet9 4 F	C3948 /sheet1 12 D	R1046 /sheet5 2 G	R3611 /sheet3 13 B	V1304 /sheet7 10 E	
C1315-2 /sheet7 10 B	C1708 /sheet9 4 F	C3949 /sheet1 7 D	R1047 /sheet5 3 G	R3612 /sheet3 13 C	V1305-1 /sheet7 10 G	
C1315-1 /sheet7 10 B	C1709 /sheet9 4 F	C3961 /sheet1 13 B	R1048 /sheet5 2 G	R3613 /sheet3 13 C	V1305-2 /sheet7 10 G	
C1316 /sheet7 7 C	C1901 /sheet9 3 D	C3962 /sheet1 13 B	R1049 /sheet5 3 G	R3614 /sheet3 13 C	V1400 /sheet8 3 B	
C1317 /sheet7 3 E	C1902 /sheet9 3 E	C3963 /sheet1 13 B	R1050 /sheet5 2 G	R3615 /sheet3 13 C	V1500 /sheet8 9 G	
C1318-1 /sheet7 11 B	C1904 /sheet9 3 E	C3964 /sheet1 13 B	R1051 /sheet5 3 G	R3616 /sheet3 13 C	V1605 /sheet10 3 F	
C1318-2 /sheet7 11 B	C2100 /sheet9 3 B	C3965 /sheet1 14 B	R1052 /sheet5 2 G	R3617 /sheet3 13 C	V2100 /sheet9 4 A	
C1319 /sheet7 3 E	C2101 /sheet9 3 B	C3966 /sheet1 14 B	R1130 /sheet6 2 C	R3618 /sheet3 11 C	V2101 /sheet9 3 B	
C1320 /sheet7 8 C	C2110 /sheet9 6 A	C3971 /sheet1 8 E	R1200 /sheet6 11 A	R3619 /sheet3 11 F	V2102 /sheet9 2 C	
C1321 /sheet7 3 E	C2130 /sheet9 9 C	C3973 /sheet1 8 E	R1210 /sheet6 9 B	R3625 /sheet3 3 E	V2302-1 /sheet10 5 B	
C1322 /sheet7 3 E	C2131 /sheet9 9 C	C3981 /sheet1 2 E	R1211 /sheet6 9 D	R3626 /sheet3 2 E	V2302-2 /sheet10 6 A	
C1323 /sheet7 3 E	C2132 /sheet9 10 C	C3982 /sheet1 2 E	R1300 /sheet7 3 B	R3627 /sheet3 3 F	V2303 /sheet10 3 B	
C1324 /sheet7 3 E	C2133 /sheet9 10 C	C3983 /sheet1 2 E	R1302 /sheet7 3 B	R3629 /sheet3 3 G	V2650 /sheet9 12 E	
C1325 /sheet7 3 E	C2200 /sheet8 9 B	C3984 /sheet1 4 F	R1303 /sheet7 2 C	R3630 /sheet3 3 F	V2821-1 /sheet10 6 C	
C1326 /sheet7 3 F	C2201 /sheet8 9 B	C3985 /sheet1 5 E	R1304 /sheet7 3 C	R3631 /sheet3 3 F	V2821-2 /sheet10 6 C	
C1327 /sheet7 3 F	C2202 /sheet8 9 B	C3986 /sheet1 5 E	R1305 /sheet7 3 C	R3632 /sheet3 3 F	V3961 /sheet1 13 B	
C1328 /sheet7 4 F	C2203 /sheet8 8 B	C3987 /sheet1 4 E	R1308 /sheet7 3 D	R3633 /sheet3 3 F	X1000 /sheet5 13 F	
C1329-1 /sheet7 6 B	C2231 /sheet8 9 B	C3988 /sheet1 5 E	R1309 /sheet7 7 D	R3634 /sheet3 3 G	X1300 /sheet7 3 H	
C1329-2 /sheet7 6 B	C2232 /sheet8 10 B	C3989 /sheet1 6 E	R1311 /sheet7 3 B	R3635 /sheet3 6 E	X1400 /sheet8 2 B	
C1330-1 /sheet7 6 B	C2233 /sheet8 9 B	C3990 /sheet1 2 F	R1315 /sheet7 7 F	R3640 /sheet3 6 C	X1504 /sheet8 2 E	

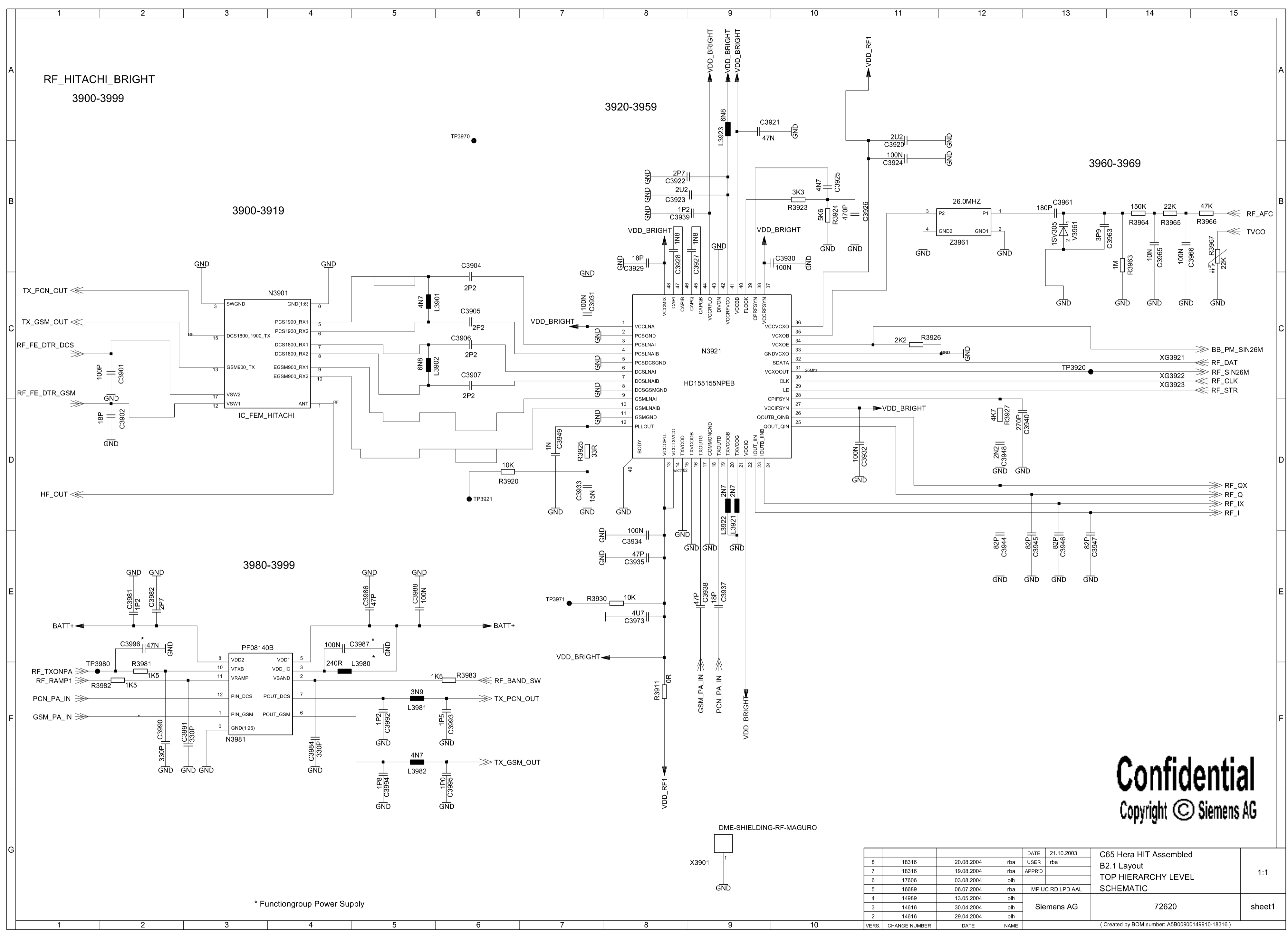
Confidential
Copyright © Siemens AG

VERS.	CHANGE NUMBER	DATE	NAME	DATE	21.10.2003			
8	18316	20.08.2004	rba	USER	rba	C65 Hera HIT Assembled B2.1 Layout TOP HIERARCHY LEVEL SCHEMATIC	1:1	
7	18316	19.08.2004	rba	APPR'D				
6	17606	03.08.2004	ohl					
5	16689	06.07.2004	rba	MP UC RD LPD AAL				
4	14989	13.05.2004	ohl	Siemens AG				
3	14616	30.04.2004	ohl				72620	poslist1
2	14616	29.04.2004	ohl					

(Created by BOM number: A5B00900149910-18316)

Proprietary data, Company confidential.
all rights reserved

Als Betriebsgeheimnis anvertraut
alle Rechte vorbehalten



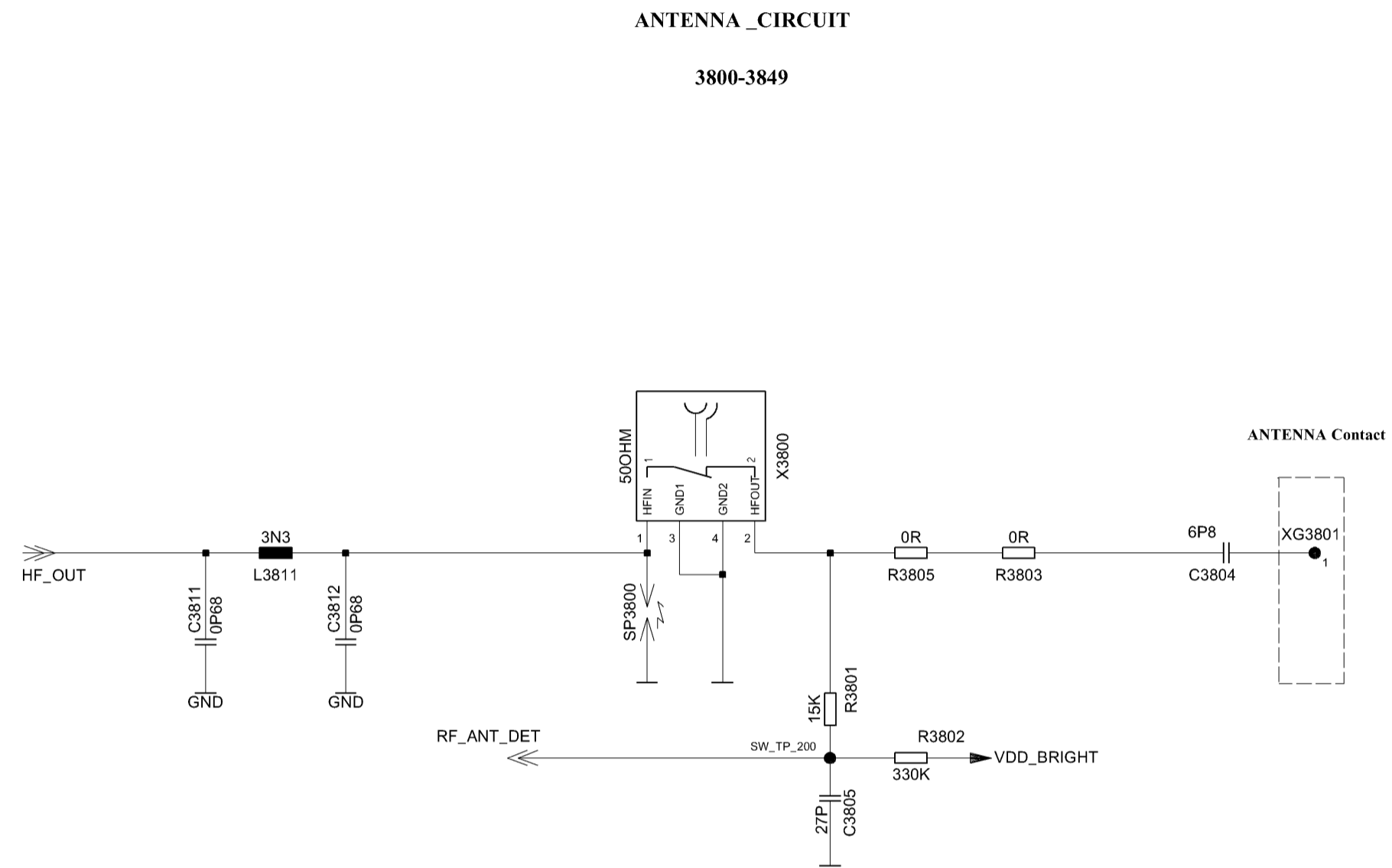
* Functiongroup Power Supply

Confidential
Copyright © Siemens AG

VERS.	CHANGE NUMBER	DATE	NAME	DATE	USER	DESCRIPTION	SHEET
8	18316	20.08.2004	rba	21.10.2003	rba	C65 Hera HIT Assembled B2.1 Layout TOP HIERARCHY LEVEL SCHEMATIC	1:1
7	18316	19.08.2004	rba	APPR'D			
6	17806	03.08.2004	olh				
5	16689	06.07.2004	rba	MP UC RD LPD AAL			
4	14989	13.05.2004	olh				
3	14616	30.04.2004	olh				
2	14616	29.04.2004	olh				
1							

Siemens AG 72620 sheet1

(Created by BOM number: A5B00900149910-18316)

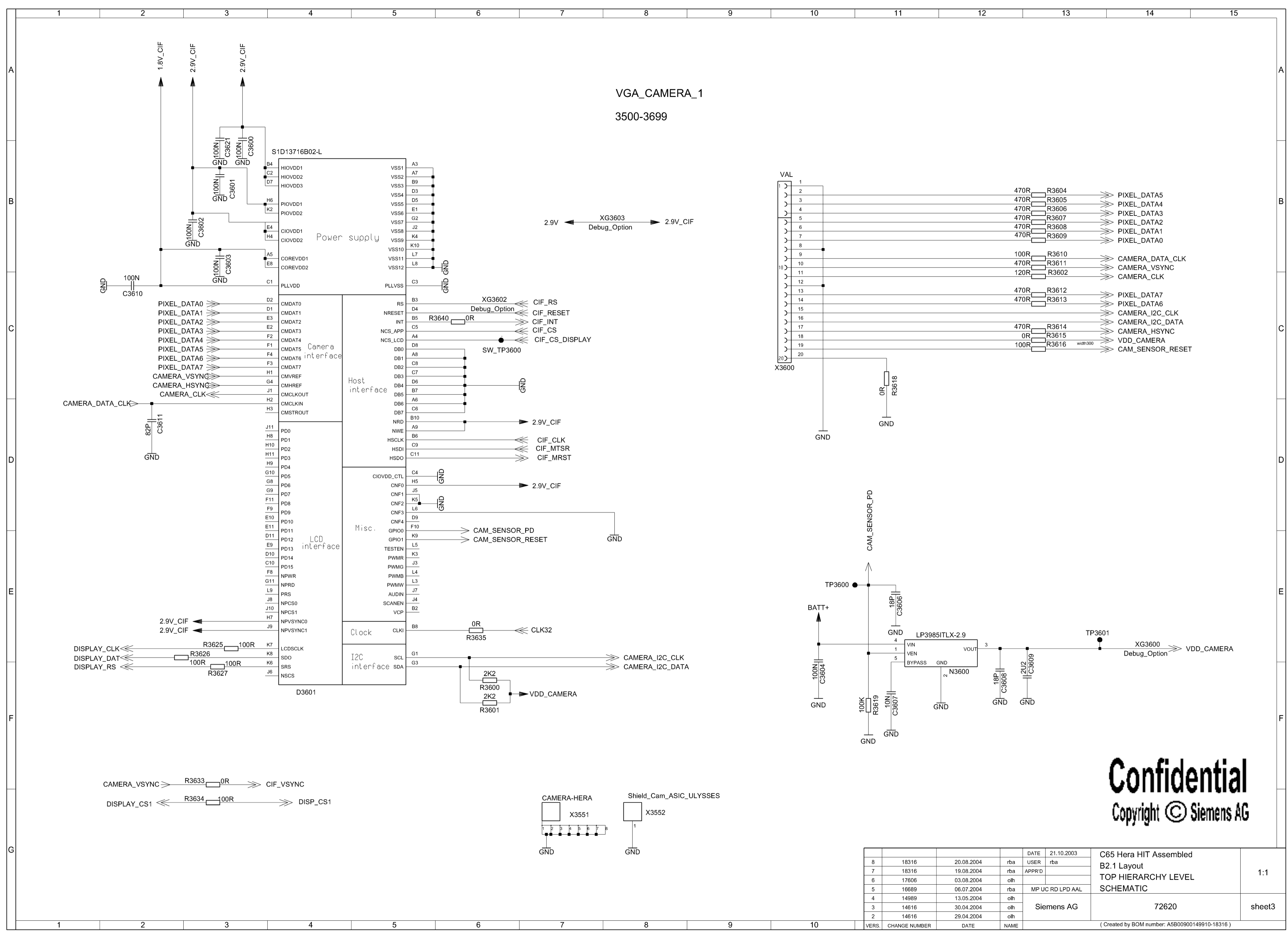


Confidential
Copyright © Siemens AG

VERS.	CHANGE NUMBER	DATE	NAME	DATE	USER	NAME	SCALE	
8	18316	20.08.2004	rba	21.10.2003	rba	C65 Hera HIT Assembled B2.1 Layout TOP HIERARCHY LEVEL SCHEMATIC	1:1	
7	18316	19.08.2004	rba	USER	rba			
6	17606	03.08.2004	olh	APPR'D				
5	16689	06.07.2004	rba	MP UC RD LPD AAL				
4	14989	13.05.2004	olh			Siemens AG	72620	
3	14616	30.04.2004	olh					
2	14616	29.04.2004	olh					
							sheet2	
							(Created by BOM number: A5B00900149910-18316)	

Proprietary data, Company confidential.
all rights reserved

Als Betriebsgeheimnis anvertraut
alle Rechte vorbehalten



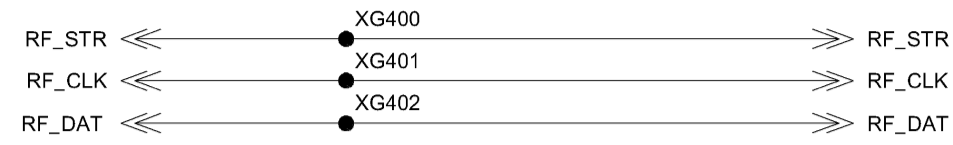
Confidential
Copyright © Siemens AG

VERS.	CHANGE NUMBER	DATE	NAME	DATE	USER	DESCRIPTION	SHEET
8	18316	20.08.2004	rba	21.10.2003	rba	C65 Hera HIT Assembled B2.1 Layout TOP HIERARCHY LEVEL SCHEMATIC	1:1
7	18316	19.08.2004	rba	APPR'D			
6	17806	03.08.2004	olh				
5	16689	06.07.2004	rba	MP UC RD LPD AAL			
4	14989	13.05.2004	olh				
3	14616	30.04.2004	olh			Siemens AG	72620
2	14616	29.04.2004	olh				sheet3

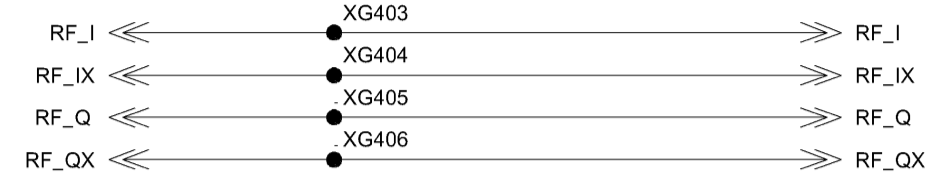
(Created by BOM number: A5B00900149910-18316)

HIT_POINTS LOGIK/HF_PART_1

400-449



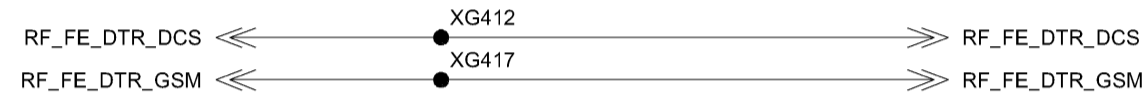
TRANCEIVER ENABLE SIGNAL
TRANCEIVER CLOCK SIGNAL
TRANCEIVER DATA SIGNAL



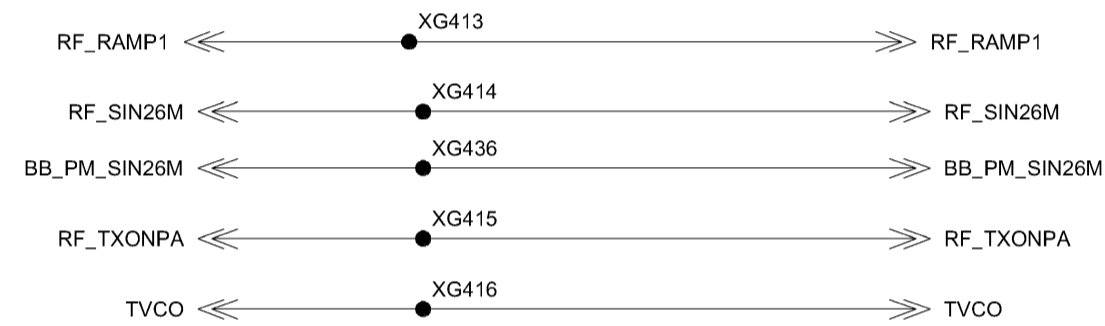
Bidirectional analoue RX/TX modulartet signal
Baseband signals



Reference frequency correction



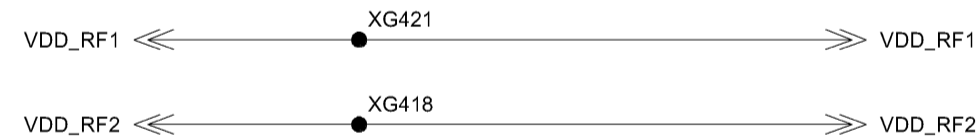
DCSTX enable Asic for Hitachisolution
GSMTX enable Asic for Hitachisolution



analogue power amplifier ramping signal
26 MHz reference frequency
Second 26 MHz reference frequency
Power up of power controller
Temperature sensor X-tal



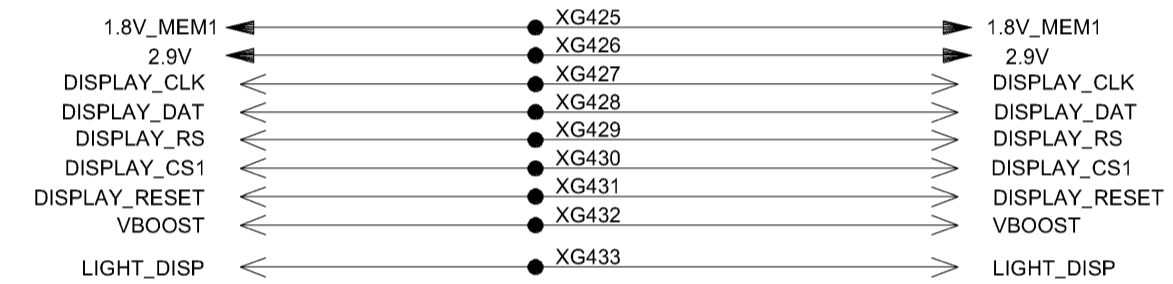
DETECTION internal/external Antenna



programmed voltage 1
programmed voltage 2



swiched LOW- / HIGH-band



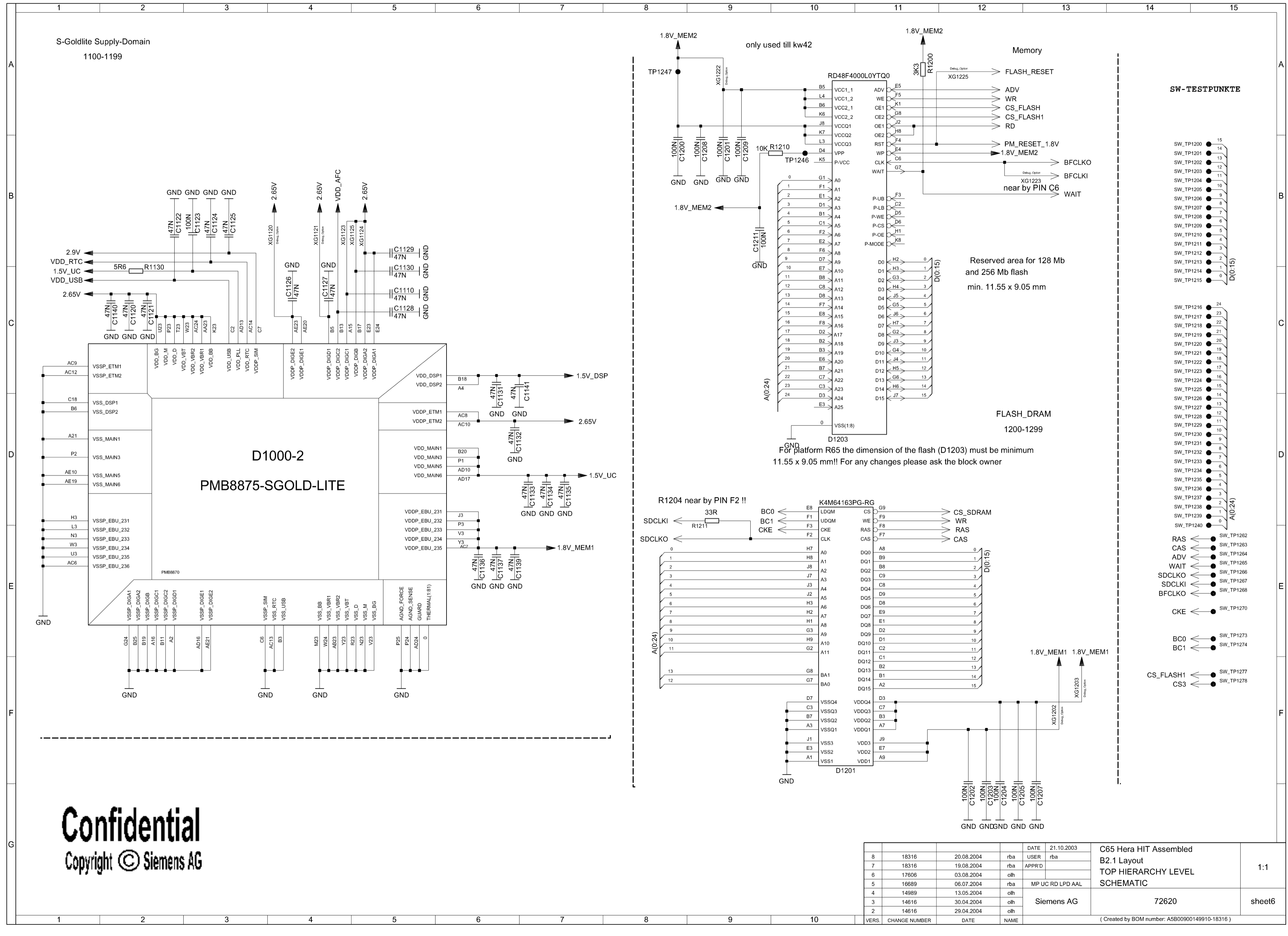
SAR-GND-PAD

Confidential
Copyright © Siemens AG

VERS.	CHANGE NUMBER	DATE	NAME	DATE	USER	DATE	USER	DESCRIPTION	SHEET
8	18316	20.08.2004	rba	21.10.2003	rba			C65 Hera HIT Assembled	1:1
7	18316	19.08.2004	rba		APPR'D			B2.1 Layout	
6	17806	03.08.2004	olh					TOP HIERARCHY LEVEL	sheet4
5	16689	06.07.2004	rba			MP UC RD LPD AAL		SCHEMATIC	
4	14989	13.05.2004	olh						
3	14616	30.04.2004	olh				Siemens AG	72620	
2	14616	29.04.2004	olh						
(Created by BOM number: A5B00900149910-18316)									

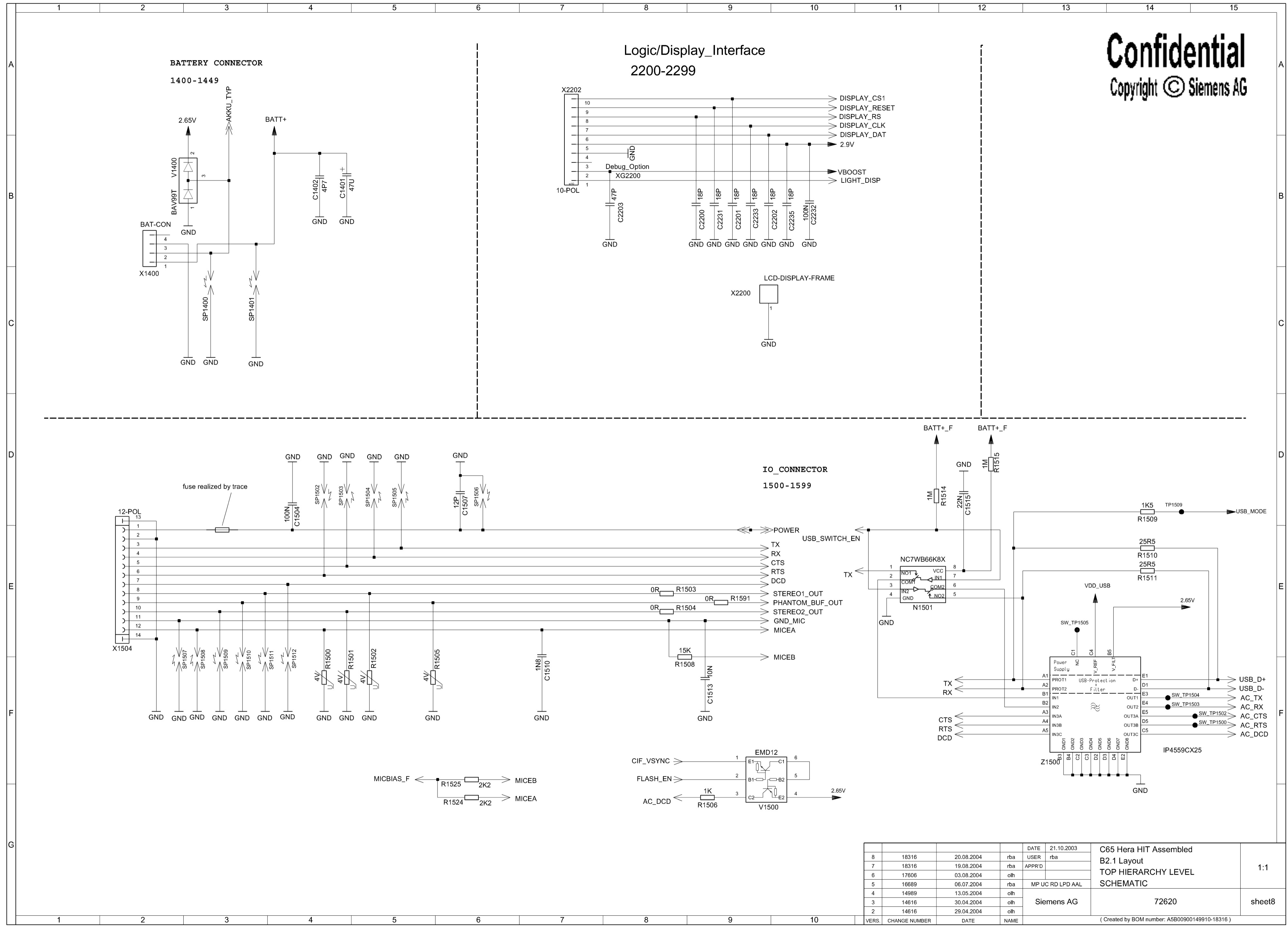
Proprietary data, Company confidential.
all rights reserved

Als Betriebsgeheimnis anvertraut
alle Rechte vorbehalten

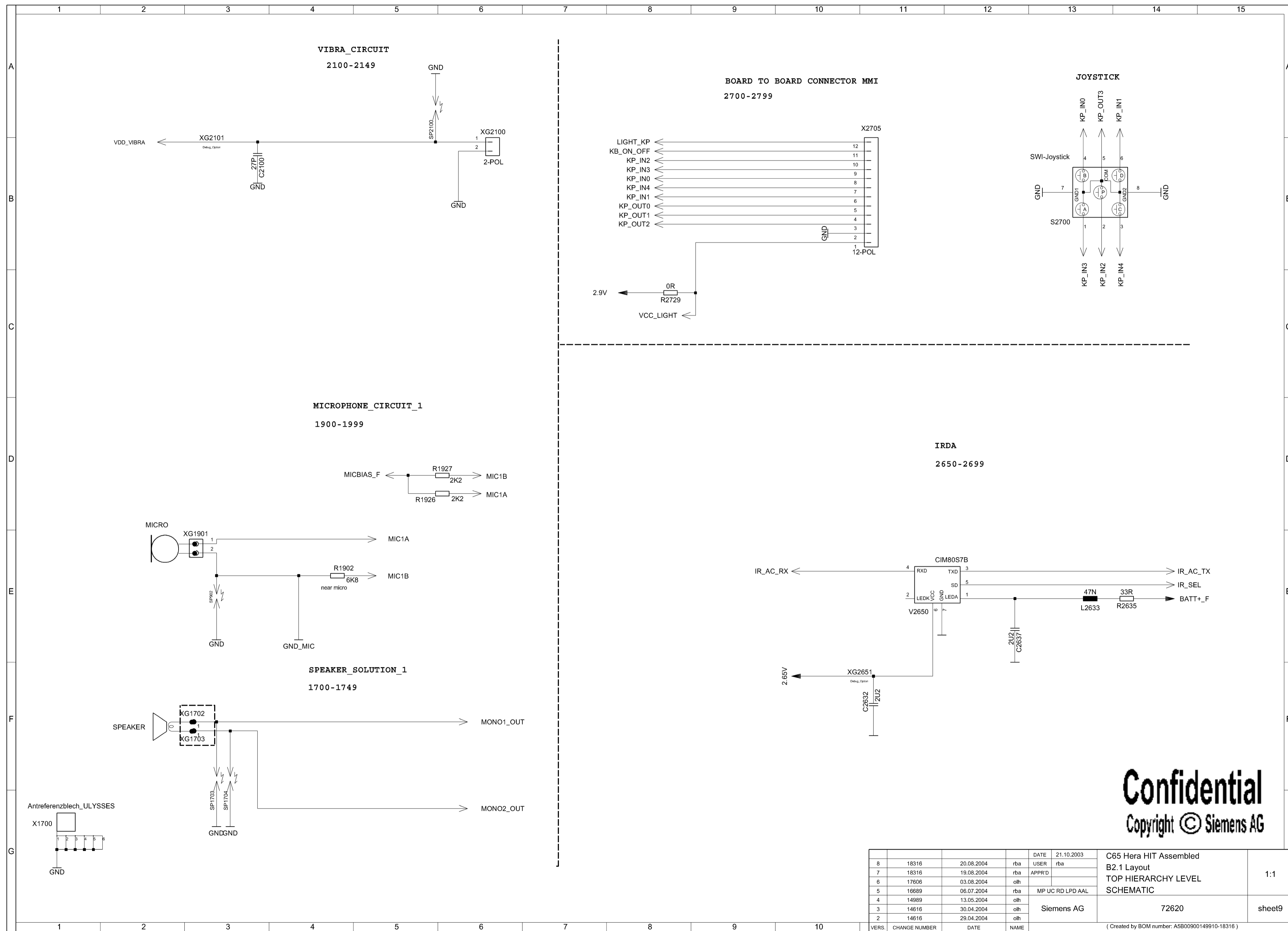


Confidential
Copyright © Siemens AG

VERS.	CHANGE NUMBER	DATE	NAME	DATE	21.10.2003	C65 Hera HIT Assembled	
8	18316	20.08.2004	rba	USER		B2.1 Layout TOP HIERARCHY LEVEL SCHEMATIC	
7	18316	19.08.2004	rba	APPR'D			
6	17806	03.08.2004	ohl				
5	16689	06.07.2004	rba	MP UC RD LPD AAL			
4	14989	13.05.2004	ohl				
3	14616	30.04.2004	ohl				
2	14616	29.04.2004	ohl			Siemens AG	
						72620	sheet6
						(Created by BOM number: A5B00900149910-18316)	

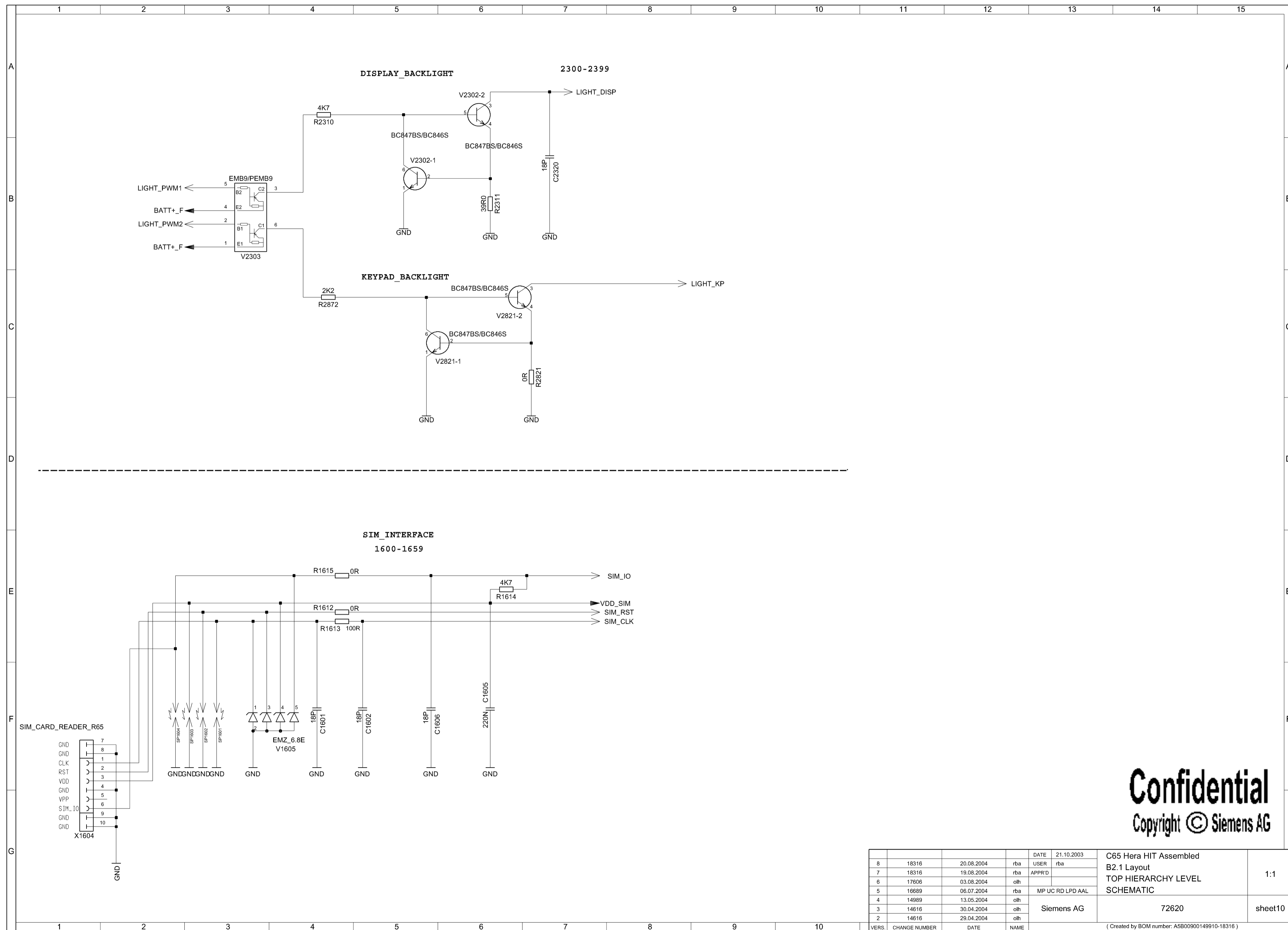


VERS.	CHANGE NUMBER	DATE	NAME	DATE	USER	DATE	USER	DATE	USER	DATE	USER
8	18316	20.08.2004	rba	21.10.2003	rba						
7	18316	19.08.2004	rba		APPR'D						
6	17806	03.08.2004	olh								
5	16689	06.07.2004	rba								
4	14989	13.05.2004	olh								
3	14616	30.04.2004	olh								
2	14616	29.04.2004	olh								
				Siemens AG		72620		C65 Hera HIT Assembled B2.1 Layout TOP HIERARCHY LEVEL SCHEMATIC		1:1	
										sheet8	
(Created by BOM number: A5B00900149910-18316)											



Confidential
Copyright © Siemens AG

VERS.	CHANGE NUMBER	DATE	NAME	DATE	USER	DATE	USER	DESCRIPTION	SHEET
8	18316	20.08.2004	rba	21.10.2003	rba			C65 Hera HIT Assembled B2.1 Layout TOP HIERARCHY LEVEL SCHEMATIC	1:1
7	18316	19.08.2004	rba		APPR'D				
6	17806	03.08.2004	olh						
5	16689	06.07.2004	rba			MP UC RD LPD AAL			
4	14989	13.05.2004	olh						
3	14616	30.04.2004	olh						
2	14616	29.04.2004	olh						
					Siemens AG				
								72620	sheet9
(Created by BOM number: A5B00900149910-18316)									

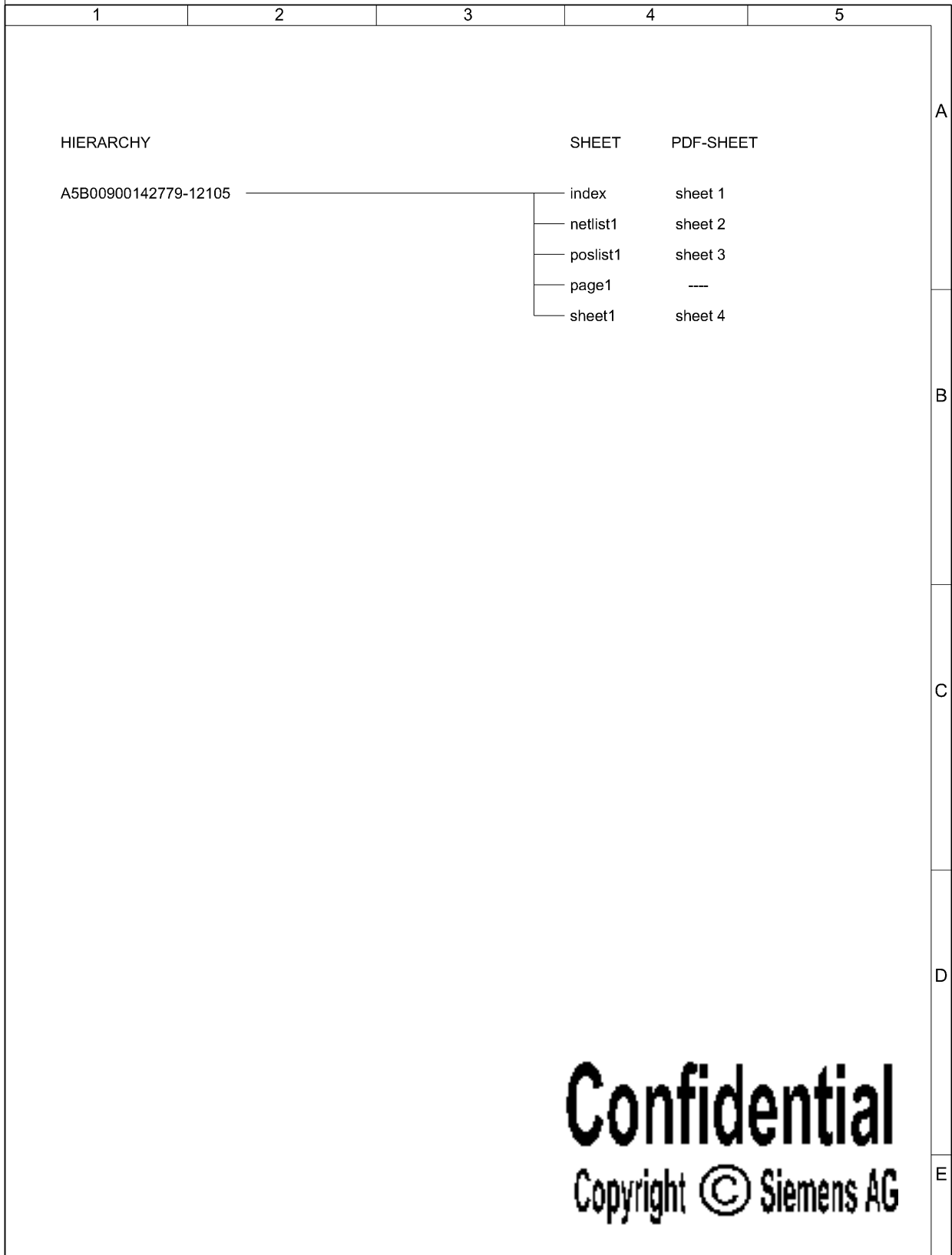


Confidential
Copyright © Siemens AG

VERS.	CHANGE NUMBER	DATE	NAME	DATE	USER	DATE	NAME	DESCRIPTION	SHEET
8	18316	20.08.2004	rba	21.10.2003	rba			C65 Hera HIT Assembled B2.1 Layout TOP HIERARCHY LEVEL SCHEMATIC	1:1
7	18316	19.08.2004	rba	APPR'D					
6	17606	03.08.2004	olh						
5	16689	06.07.2004	rba			MP UC RD LPD AAL			
4	14989	13.05.2004	olh						
3	14616	30.04.2004	olh						
2	14616	29.04.2004	olh						
							Siemens AG	72620	sheet10
(Created by BOM number: A5B00900149910-18316)									

Proprietary data, company confidential.
All rights reserved

Als Betriebsgeheimnis anvertraut
Alle Rechte vorbehalten



Confidential
Copyright © Siemens AG

VERS.	CHANGE NUMBER	DATE	NAME	DATE	USER	APPR'D	DESCRIPTION	SCALE
				10.10.2003	bak		C65-Hera MMI Assembled B2 Layout TOP HIERARCHY LEVEL SCHEMATIC	1:1
5	13822	05.04.2004	rba					
4	12106	25.02.2004	olh	MP UC RD ED AAL				
3	10890	14.01.2004	olh				Siemens AG	53598
2	9990	26.11.2003	olh					
1	8058	10.10.2003	olh					
								(Created by BOM number: A5B00900131452-13822)

Proprietary data, company confidential.
All rights reserved

Als Betriebsgeheimnis anvertraut
Alle Rechte vorbehalten

	1	2	3	4	5	
	<p>KB_ON_OFF /sheet1 7 D /sheet1 8 D</p> <p>KP_IN0 /sheet1 8 D /sheet1 7 C</p> <p>KP_IN1 /sheet1 5 C /sheet1 8 D</p> <p>KP_IN2 /sheet1 5 C /sheet1 8 D</p> <p>KP_IN3 /sheet1 5 B /sheet1 8 D</p> <p>KP_IN4 /sheet1 5 B /sheet1 8 D</p> <p>KP_OUT0 /sheet1 5 A /sheet1 8 D</p> <p>KP_OUT1 /sheet1 5 A /sheet1 8 D</p> <p>KP_OUT2 /sheet1 5 A /sheet1 8 D</p> <p>LIGHT_KP /sheet1 8 D /sheet1 7 B</p> <p>VCC_LIGHT /sheet1 8 E /sheet1 7 A</p>					A
						B
						C
						D
						E

Confidential
Copyright © Siemens AG

				DATE	10.10.2003	C65-Hera MMI Assembled B2 Layout TOP HIERARCHY LEVEL SCHEMATIC	1:1	
				USER	bak			
				APPR'D				
5	13822	05.04.2004	rba			Siemens AG	53598	netlist1
4	12106	25.02.2004	olh	MP UC RD ED AAL				
3	10890	14.01.2004	olh					
2	9990	26.11.2003	olh					
1	8058	10.10.2003	olh					
VERS.	CHANGE NUMBER	DATE	NAME	(Created by BOM number: A5B00900131452-13822)				

Proprietary data, company confidential.
All rights reserved

Als Betriebsgeheimnis anvertraut
Alle Rechte vorbehalten

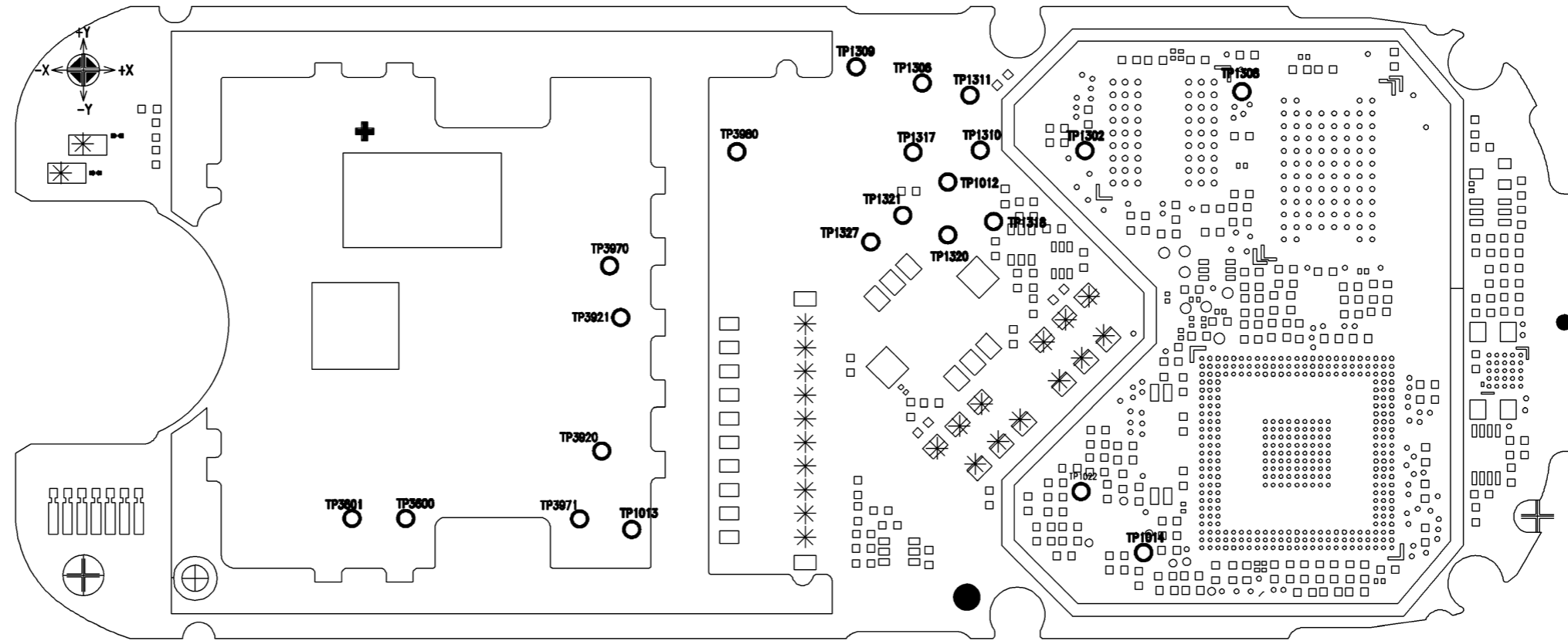
1	2	3	4	5
C2801 /sheet1 9 C				
R2801 /sheet1 7 A				
R2802 /sheet1 8 A				
R2803 /sheet1 8 A				
R2804 /sheet1 9 A				
R2805 /sheet1 9 A				
R2806 /sheet1 10 A				
TP2805 /sheet1 9 A				
TP2806 /sheet1 10 A				
TP2803 /sheet1 8 A				
TP2801 /sheet1 7 A				
TP2804 /sheet1 9 A				
TP2802 /sheet1 8 A				
V2801 /sheet1 7 B				
V2802 /sheet1 8 B				
V2803 /sheet1 8 B				
V2804 /sheet1 9 B				
V2805 /sheet1 9 B				
V2806 /sheet1 10 B				

Confidential
Copyright © Siemens AG

VERS.	CHANGE NUMBER	DATE	NAME	DATE	USER	APPR'D	DESCRIPTION	SCALE
				10.10.2003	bak		C65-Hera MMI Assembled	1:1
							B2 Layout	
							TOP HIERARCHY LEVEL	
5	13822	05.04.2004	rba				MP UC RD ED AAL	SCHEMATIC
4	12106	25.02.2004	olh					
3	10890	14.01.2004	olh					
2	9990	26.11.2003	olh			Siemens AG	53598	poslist1
1	8058	10.10.2003	olh					
(Created by BOM number: A5B00900131452-13822)								

PROPRIETARY DATA, COMPANY CONFIDENTIAL
ALL RIGHTS RESERVED

ALS BETRIEBSGEGHEIMNIS ANVERTRAUT
ALLE RECHTE VORBEHALTEN



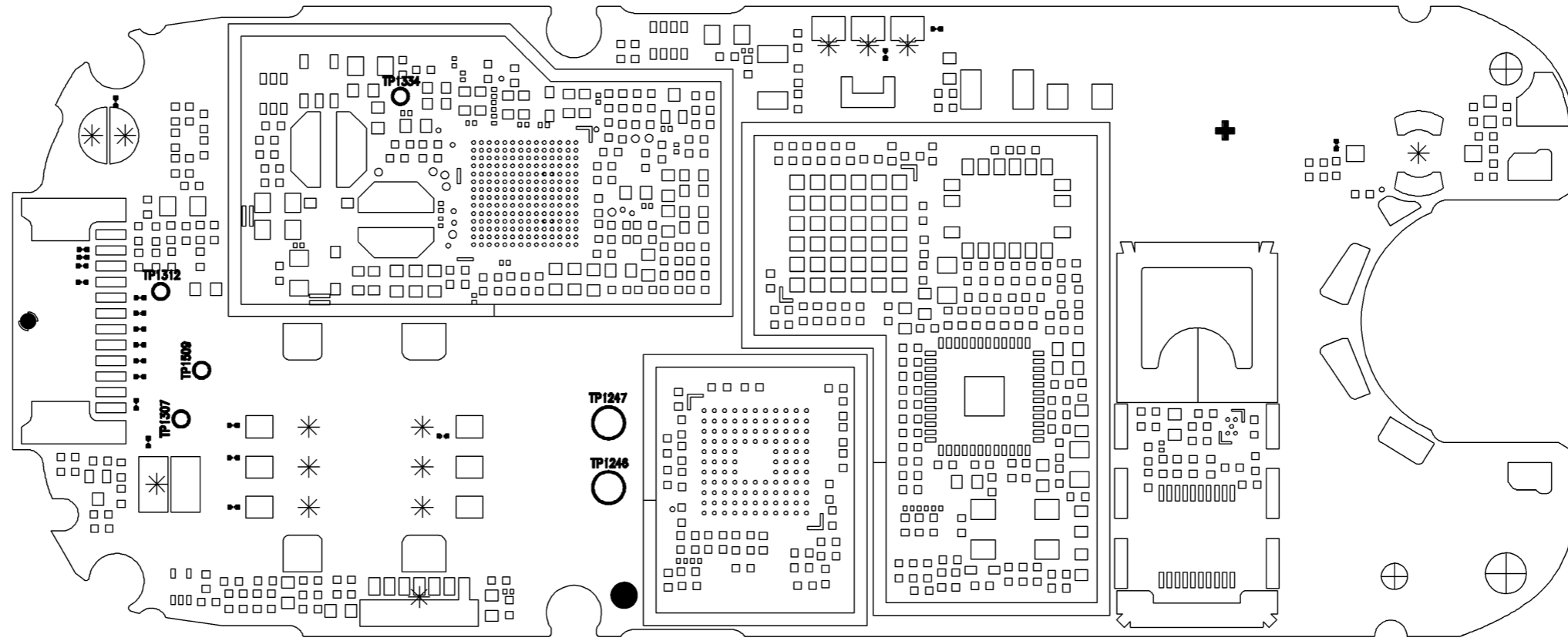
TP1012	7A	TP3980	6A
TP1013	5C		
TP1014	8C		
TP1022	7B		
TP1302	7A		
TP1306	7A		
TP1308	8A		
TP1309	6A		
TP1310	7A		
TP1311	7A		
TP1317	7A		
TP1318	7B		
TP1320	7B		
TP1321	7A		
TP1327	6B		
TP3600	4C		
TP3601	4C		
TP3920	5B		
TP3921	5B		
TP3970	5B		
TP3971	5C		

Confidential
Copyright © Siemens AG

				DATE	21.10.2003	C65 Hera HIT Assembled B2.1 Layout TESTPOINT DIAGRAM (SIDE 1)	3:1
				NAME	rba		
				APPR'D			
				STD			
				MP UC RD LPD AAL			
				SIEMENS AG		72622	SHEET 1+
1	14345	21.04.2004	o h	(Created by BOM number: A5B00900149910-14345)			
VERS.	CHANGE NUMBER	DATE	NAME				

PROPRIETARY DATA, COMPANY CONFIDENTIAL
ALL RIGHTS RESERVED

ALS BETRIEBSGEGHEIMNIS ANVERTRAUT
ALLE RECHTE VORBEHALTEN



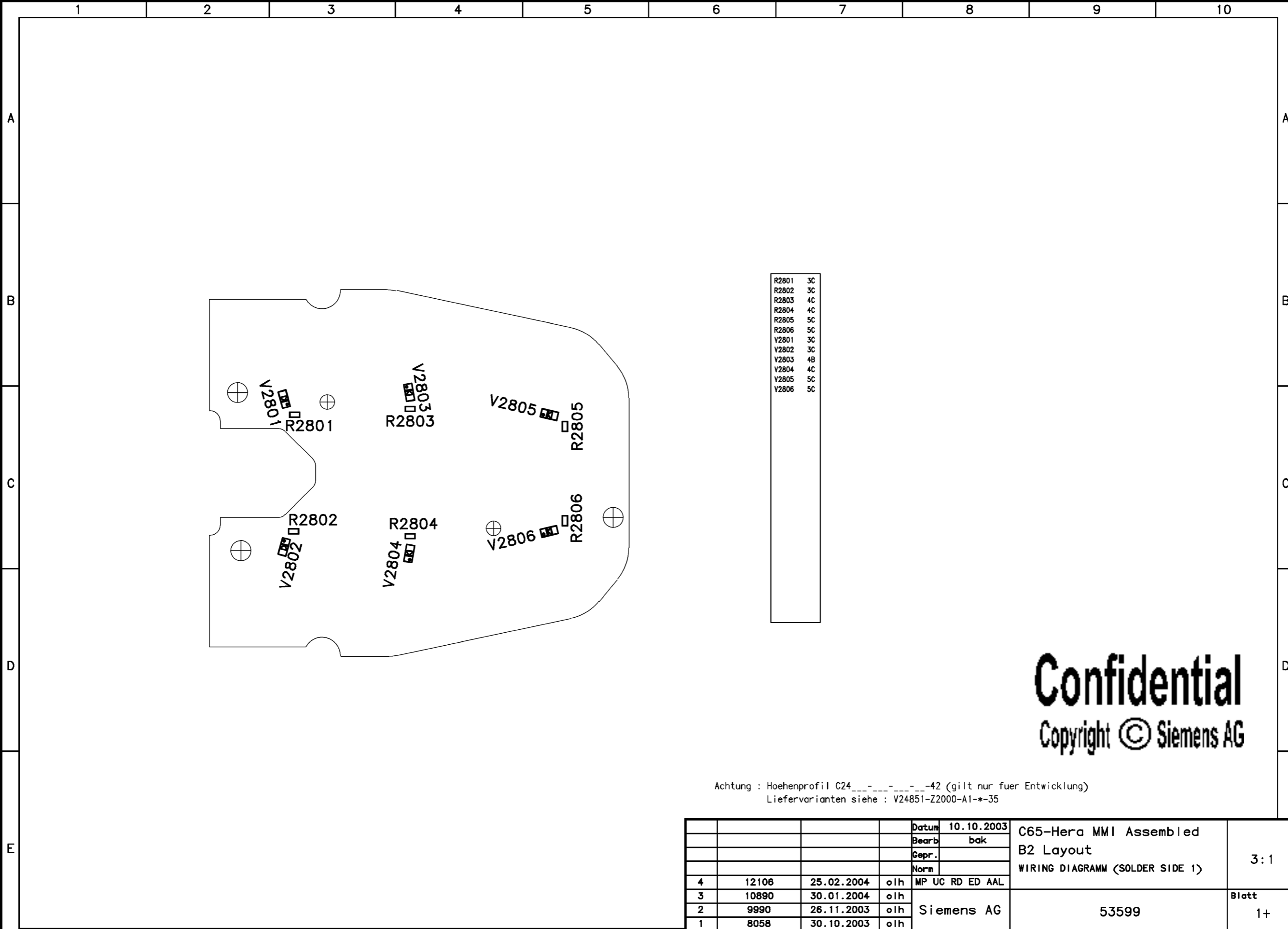
TP1246	58
TP1247	58
TP1307	38
TP1312	38
TP1334	4A
TP1509	38

Confidential
Copyright © Siemens AG

				DATE	21.10.2003	C65 Hera HIT Assembled B2.1 Layout TESTPOINT DIAGRAM (SIDE 2)	3:1
				NAME	rba		
				APPR'D			
				STD			
				MP UC RD LPD AAL			
				SIEMENS AG		72622	SHEET 2-
1	14345	21.04.2004	o h	(Created by BOM number: A5B00900149910-14345)			
VERS.	CHANGE NUMBER	DATE	NAME				

PROPRIETARY DATA, COMPANY CONFIDENTIAL
ALL RIGHTS RESERVED

ALS BETRIEBSGHEIMNIS ANVERTRAUT
ALLE RECHTE VORBEHALTEN



Confidential
Copyright © Siemens AG

Achtung : Höhenprofil C24-----42 (gilt nur fuer Entwicklung)
Liefervarianten siehe : V24851-Z2000-A1-*-35

				Datum	10.10.2003	C65-Hera MMI Assembled B2 Layout WIRING DIAGRAM (SOLDER SIDE 1)	3:1
				Bearb	bak		
				Gepr.			
				Norm			
4	12106	25.02.2004	o/h	MP UC RD ED AAL		Siemens AG	Blatt 1+
3	10890	30.01.2004	o/h				
2	9990	26.11.2003	o/h				
1	8058	30.10.2003	o/h				
Zust.	Mitteilung	Datum	Name	(Created by BOM number: A5B00900131452-12106)			

PROPRIETARY DATA, COMPANY CONFIDENTIAL
ALL RIGHTS RESERVED

ALS BETRIEBSGEGHEIMNIS ANVERTRAUT
ALLE RECHTE VORBEHALTEN

1 2 3 4 5 6 7 8 9 10

A

B

C

D

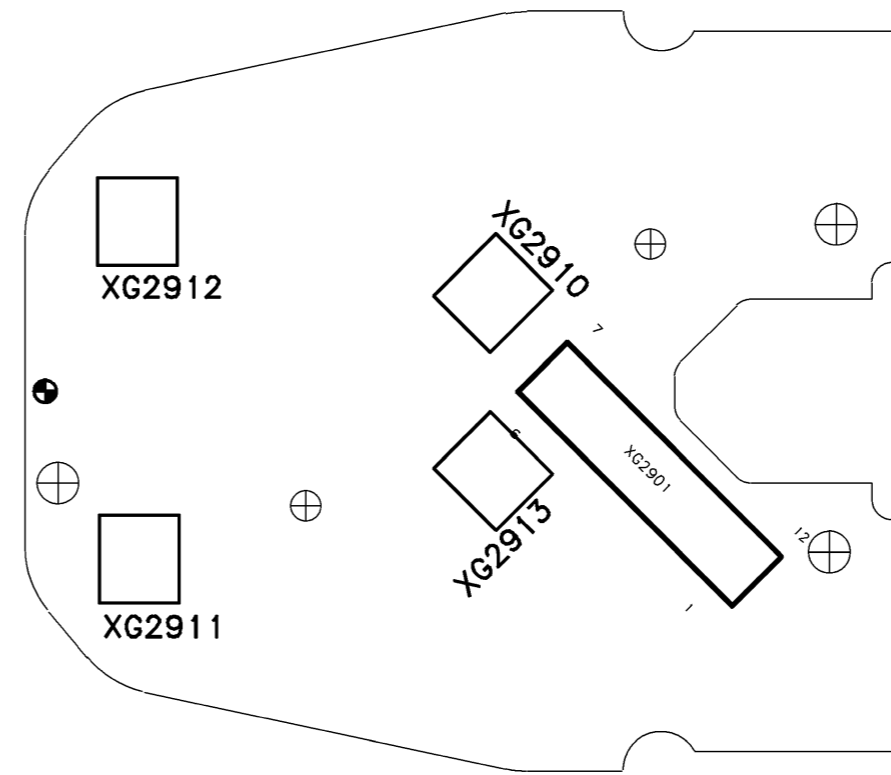
E

A

B

C

D



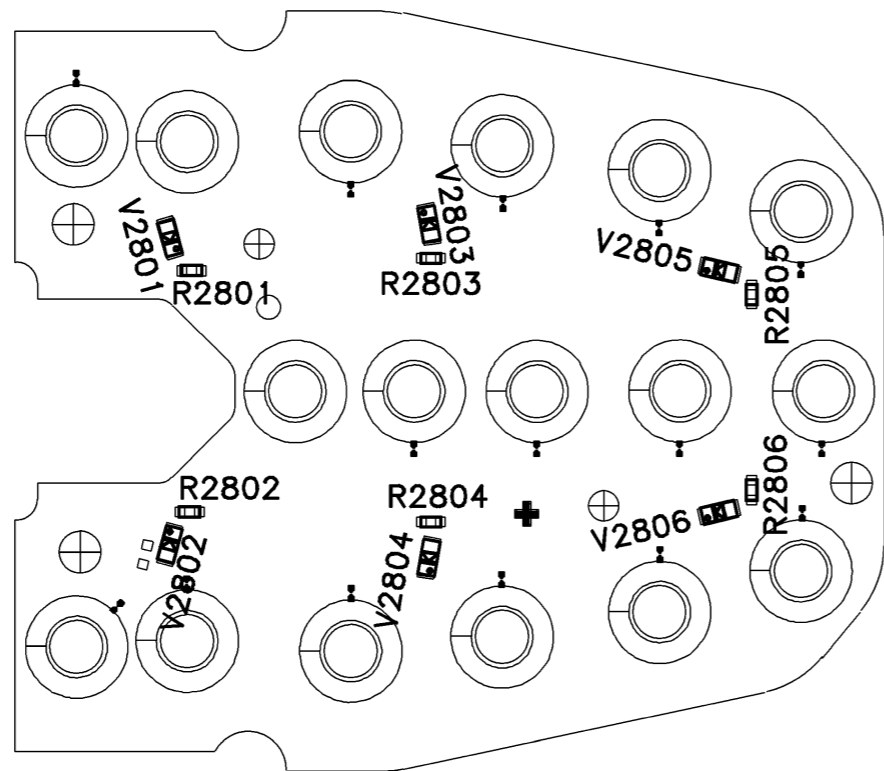
Confidential
Copyright © Siemens AG

Achtung : Höhenprofil C24-----42 (gilt nur fuer Entwicklung)
Liefervarianten siehe : V24851-Z2000-A1-*-35

				Datum	10.10.2003	C65-Hera MMI Assembled B2 Layout WIRING DIAGRAM (SOLDER SIDE 2)	3:1
				Bearb	bak		
				Gepr.			
				Norm			
4	12106	25.02.2004	o h	MP UC RD ED AAL		Siemens AG	Blatt 2+
3	10890	30.01.2004	o h				
2	9990	26.11.2003	o h				
1	8058	30.10.2003	o h				
Zust. Mitteilung				Datum	Name	(Created by BOM number: A5B00900131452-12106)	

PROPRIETARY DATA, COMPANY CONFIDENTIAL
ALL RIGHTS RESERVED

ALS BETRIEBSGHEIMNIS ANVERTRAUT
ALLE RECHTE VORBEHALTEN



R2801	3C
R2802	3C
R2803	4C
R2804	4C
R2805	5C
R2806	5C
V2801	3C
V2802	3C
V2803	4B
V2804	4C
V2805	5C
V2806	5C

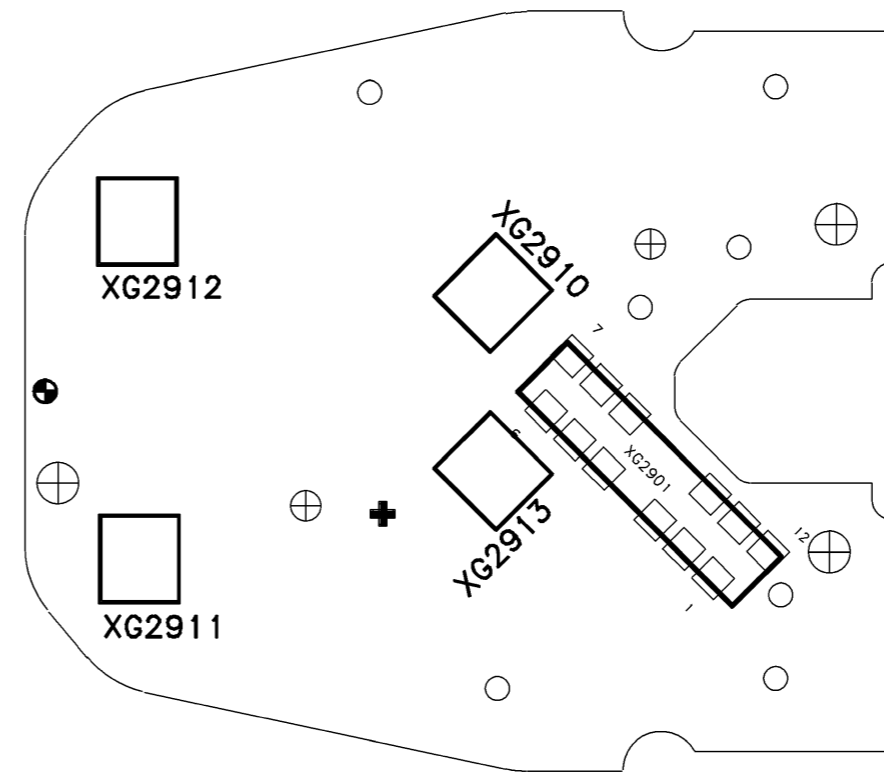
Confidential
Copyright © Siemens AG

Achtung : Höhenprofil C24-----42 (gilt nur fuer Entwicklung)
Liefervarianten siehe : V24851-Z2000-A1-*-35

				Datum	10.10.2003	C65-Hera MMI Assembled B2 Layout WIRING DIAGRAM (SOLDER SIDE 1)	3:1
				Bearb	bak		
				Gepr.			
				Norm			
4	12106	25.02.2004	o/h	MP UC RD ED AAL			
3	10890	30.01.2004	o/h				
2	9990	26.11.2003	o/h		Siemens AG		Blatt
1	8058	30.10.2003	o/h			53599	3+
Zust.	Mitteilung	Datum	Name	(Created by BOM number: A5B00900131452-12106)			

PROPRIETARY DATA, COMPANY CONFIDENTIAL
ALL RIGHTS RESERVED

ALS BETRIEBSGHEIMNIS ANVERTRAUT
ALLE RECHTE VORBEHALTEN



Confidential
Copyright © Siemens AG

Achtung : Höhenprofil C24-----42 (gilt nur fuer Entwicklung)
Liefervarianten siehe : V24851-Z2000-A1-*-35

				Datum	10.10.2003	C65-Hera MMI Assembled B2 Layout WIRING DIAGRAM (SOLDER SIDE 2)	3:1
				Bearb	bak		
				Gepr.			
				Norm			
4	12106	25.02.2004	o/h	MP UC RD ED AAL		Siemens AG	Blatt 4-
3	10890	30.01.2004	o/h				
2	9990	26.11.2003	o/h				
1	8058	30.10.2003	o/h				
Zust.	Mitteilung	Datum	Name	(Created by BOM number: A5B00900131452-12106)			