



The Power to Surprise

2017  
SOUL



# MADE FOR [STANDING OUT]



You bring an intensity to everything you pursue, including your driving. As much as you need the practical capabilities of a utility vehicle, you also want a design that's big on personality and performance that's strong on agility and responsiveness. And Soul goes even further to help you express your individuality, with distinctive designs for each model and now three engines to choose from. That's how you can make your Soul even more your own.

**SOUL**



SOUNDS AS GOOD  
AS IT LOOKS.



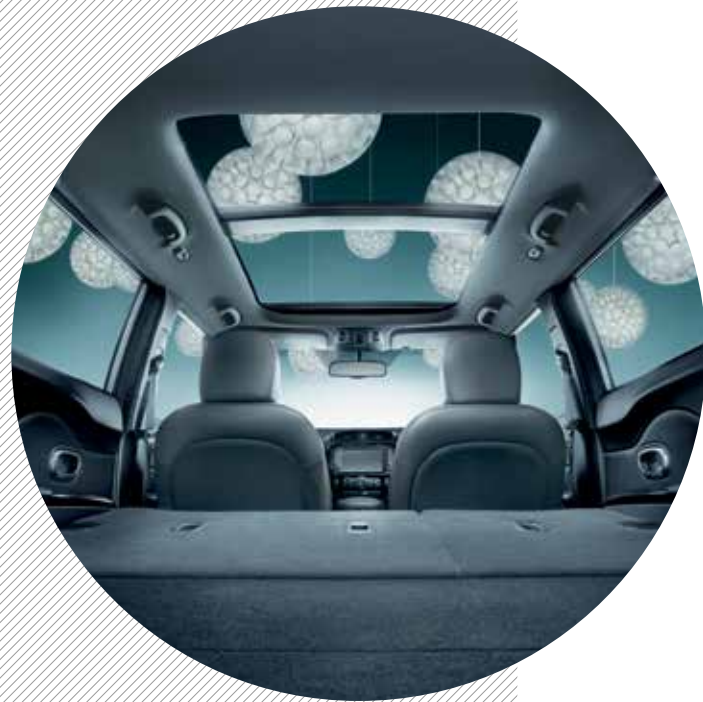
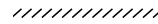
You drive on emotion. To set the mood, opt for the available sound-reactive speaker lights – your very own light show. Paired with the available Harman/Hardon<sup>®2</sup> premium audio system, you have sights and sounds covered. Want to make an even more striking impression? Then dial up the colour, with new Wild Orange – just one of three new exterior colours in the 2017 Soul line up. You are so in the mood for Soul.





# ALL THE LATEST GEAR.

While Soul is designed to carry all your favourite gear, it's also equipped with the latest gear you need to elevate your ride. From the comfort of available heated and air-cooled power front seats to the connectivity of an available 8-inch multimedia interface<sup>3</sup> and the crystal clear sound of a Harman/Kardon<sup>®</sup><sup>2</sup> premium audio system. Add in the proactive safety of available blind-spot detection<sup>1</sup> and rear-cross traffic alert,<sup>1</sup> and you can see how this is the most advanced and most welcoming Soul yet.



## AIM HIGH

The view gets even better from here. Opt for the available panoramic sunroof and you gain that liberating feeling of open-air driving. A perfect finishing touch to your Soul experience.



## HEATED AND AIR-COOLED SEATS

Available heated front and rear seats help take the sting out of cold winter days. When the weather heats up, you can enjoy the added comfort of available air-cooled front seats that circulate air through perforations in the material.



## AUTOMATIC TEMPERATURE CONTROL

Soul EX+ comes with a standard automatic climate control and an ionized air filtration system, providing just-right comfort all year round.



## HEATED STEERING WHEEL

Nothing says Canada like cold winter driving. And nothing else feels as comfortable as the available heated steering wheel.



## CONCEALED STORAGE

The floor of the cargo area flips up to reveal a hidden compartment for securing small items. In addition, Soul EX Premium includes a cargo screen and luggage net to keep your belongings safely out of view.



# YOUR WISH – ITS COMMAND.

Your level of control is unprecedented in the 2017 Soul, right from the start, thanks to the available keyless push-button start ignition. Before you hit the road, connect your smartphone with Android Auto<sup>®7.8</sup> or Apple CarPlay<sup>®6.8</sup> to stream your favourite playlists. Need to know the best route to your next stop? Simply ask with the available voice-command activated navigation system<sup>3</sup>. Want to know how much boost you're gaining from Soul SX's turbo? When in 'sport' mode, the SX sport instrument cluster displays turbo boost and torque. Take command – with Soul.



//////////



#### 1. PUSH BUTTON START

There's no need to search for the ignition key with the convenience of Soul's available Smart Key and push-button start. The Smart Key system now also includes a Smart hatch release.

#### 2. SUNGLASSES HOLDER

Looking for a convenient place to stow your sunglasses? Soul is equipped with a handy overhead storage compartment that makes for easy access.

#### 3. POWER-FOLDING OUTSIDE MIRRORS

The available power-folding outside mirrors fold in easily, using a door-mounted switch or simply by unlocking the car. You can also use the Smart Key to automatically fold them in or out.

#### 4. SMARTPHONE INTEGRATION

You never go anywhere without your smartphone – or your tunes. Soul offers true smartphone integration through the available Apple CarPlay<sup>®6.8</sup> and Android Auto<sup>®7.8</sup> systems. They also open a world of other apps that help you get the most out of your music, your phone – and your Soul.





# TURBO — THE REAL KICKER.

Soul delivers an even bigger kick in 2017, thanks to the introduction of the new SX Turbo. It makes its presence felt even before it hits the road, with exclusive styling cues that emphasize its sporty disposition. They include everything from 18-inch sport alloy wheels and a dual-tip hi-flow muffler to a sport steering wheel, sport instrument cluster and orange accent stitching throughout the interior. But the ultimate kicker is under the hood – the 1.6 litre turbocharged engine that produces a gripping 201 horsepower and up to 195 lb.-ft. of torque. Ready to turbocharge your life?



#### LIGHTING

Enhancing both visibility and style, Soul SX features available bi-function Xenon® High-Intensity Discharge (HID) headlights and distinctive LED fog lights.

#### WHEELS

Soul SX makes a powerful statement with its 18-inch sport alloy wheels, in addition to sport bumpers and sport side sills.



#### 7-SPEED DUAL-CLUTCH TRANSMISSION

The 1.6 litre turbo in the Soul SX is matched with a 7-speed dual-clutch automatic transmission. What does the dual-clutch design deliver? It makes for faster gear changes, translating into less torque drop-off while shifting. The transmission also contributes to better fuel-efficiency and faster acceleration.

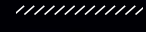
#### PANORAMIC SUNROOF





The available panoramic sunroof lets you enjoy fresh air and sunshine whenever you like.



# DRIVE PROACTIVELY.

On the road, trouble can come in many forms. Soul is equipped with a series of advanced driver control systems that help you steer clear of harm's way. Systems like the Vehicle Stability Management help you maintain control, while systems like the Brake Assist intervene in emergency situations to help bring you to a safe stop. Available blind-spot detection,<sup>1</sup> rear cross-traffic alert,<sup>1</sup> front collision warning<sup>1</sup> and lane departure warning<sup>1</sup> systems increase your awareness of vehicles around you. It's like having your own co-pilot.



-  VSM
-  BAS
-  EBD
-  ESC

**VEHICLE STABILITY MANAGEMENT (VSM)**  
It controls brake force, engine torque and steering torque to provide improved vehicle stability during cornering or on loose or slippery road surfaces.

**BRAKE ASSIST SYSTEM**  
When the Brake Assist System (BAS) detects an emergency braking situation, it instantly applies full braking force faster than you, helping shorten overall stopping distance.

**ELECTRONIC BRAKEFORCE DISTRIBUTION (EBD)**  
EBD adjusts front-to-rear brake pressure to compensate for varying passenger/cargo loads, while delivering more confident braking performance.

**ELECTRONIC STABILITY CONTROL (ESC)**  
ESC monitors the vehicle's response to your throttle, brake and steering inputs in tight corners and during evasive manoeuvres. If the input and response are out of sync, ESC briefly intervenes to restore stability through precise brake and engine-control adjustments.



**REAR CROSS TRAFFIC ALERT<sup>1</sup>**  
When backing out of a parking space, available rear cross traffic alert detects and alerts you to traffic or pedestrians approaching from the left or right.

**LANE DEPARTURE WARNING SYSTEM<sup>1</sup>**  
This available system uses a camera mounted at the top of the windshield to monitor lane markings, and alerts you if the vehicle deviates from the lane when the turn signal has not been activated.

**BLIND SPOT DETECTION<sup>1</sup>**  
Sensors monitor the side and rear for vehicles approaching your blind spots. Visual alerts are provided on the outside mirrors and instrument cluster; an audio alert is sounded when necessary. Available on EX Premium and SX Tech models.





Delivering world-class quality.



Kia is committed to producing exceptional vehicles with superb quality and reliability to suit your driving needs. From compact to crossover, every Kia delivers an extraordinary combination of precision engineering, outstanding performance, innovative features, and advanced safety systems.

**STUNNING DESIGN**

Under the direction of renowned **President and Chief Design Officer Peter Schreyer** — Kia vehicles have captured worldwide attention for their interior and exterior styling, which represents the collaborative work of designers who have created a look that makes every Kia recognizable at first sight. Today, the lineup consists of vehicles that fill owners, as well as Kia's designers, with pride.

**EXTENSIVE RESEARCH AND DEVELOPMENT**

Kia's R&D procedures are rigorous and exhaustive. At proving grounds around the world, vehicles undergo unrelenting tests. A world-class wind tunnel provides testing in winds up to 200 km/h. Utilizing heavy-rain-and-snowfall testing chambers and a road simulator, Kia puts its vehicles through punishing tests as part of a commitment to develop exceptionally durable and safe vehicles.



Provo concept



**FIFA PARTNER**

As the FIFA Official co-Automotive Partner, Kia is proud to help promote soccer globally. As the world's most popular sport, soccer has a special place in the hearts and minds of people in every corner of the planet. Here in Canada, enthusiasm and participation continues to build. And Kia is honoured to be at the centre of the action.

Get the points.



**Kia Member Rewards is an exclusive rewards program for Kia customers.**

As a Kia Rewards Member, you'll earn points with every dollar you spend on maintenance service, parts and accessories at your servicing Kia dealer. Those Reward Points can be redeemed for discounts on future purchases — including the purchase of a new Kia. Plus earn Bonus Points on select items and services to collect rewards even faster.

**Kia Member Rewards No-Charge Benefits**

- Fuel fill-up with the delivery of your new Kia vehicle
- Local shuttle service
- Multi-point vehicle inspection with every service visit
- Windshield washer fill-up with every paid service
- Windshield wiper installation with wiper purchase
- Preferential rates on car rentals, nationwide
- 24/7 Roadside Assistance for your vehicle under Kia's 5-year/100,000 km warranty or Certified Pre-Owned warranty
- Email notification of exclusive Kia specials and events — a great way to earn Reward Points and save on future purchases

**Become a Kia Premium Rewards Member:**

Ask your Kia Dealer how you can enjoy even more benefits.

**Enroll Today:**

Becoming a Kia Rewards Member is easy. See your Kia Dealer today to join. Visit [rewards.kia.ca](http://rewards.kia.ca) for full terms and conditions.



We've got you covered.

Kia engineers are passionate about producing vehicles that are exceptionally well-designed and reliable. Their dedication to quality and attention to detail give Kia the confidence to back every model with an outstanding warranty program.

**Our outstanding warranty coverage includes:**

**5-year/100,000 km** – Worry-free comprehensive warranty covering virtually the entire vehicle<sup>9</sup>

**5-year/100,000 km** – Powertrain Warranty covering the engine, transmission, axles, differentials and driveshafts<sup>9</sup>

**5-year/unlimited km** – Roadside Assistance covers you in case of mechanical breakdown anywhere in North America<sup>9</sup>

**1-year/20,000 km** – First-year adjustments covering consumable items such as bulbs, wiper blades, fuses, brake pads, etc.<sup>9</sup>

**8-year/130,000 km** – Major Emission Components that guarantee that the car will conform with government emission regulations<sup>9</sup>

**For more information** visit [kia.ca](http://kia.ca) or call 1-877-542-2886



## FEATURES

Exterior	LX	EX	SX
16" steel wheels with covers	●	–	–
17" alloy wheels	–	●	–
18" machine-finished alloy wheels	–	PREM	–
18" sport alloy wheels	–	–	●
P205/60R16 tires	●	–	–
P215/55R17 tires	–	●	–
P235/45R18 tires	–	PREM	●
Signature Kia grille	●	–	–
Piano black grille	–	●	●
Panoramic sunroof	–	PREM	TECH
Automatic headlights	–	●	●
Projection headlights (with black bezels)	–	+	●
Xenon high-intensity discharge (HID) headlights	–	TECH	TECH
LED light bar taillights	–	+	●
Fog lights	–	●	●
LED fog lights	–	–	TECH
LED positioning lights (bar type)	–	+	●
LED daytime running lights (bulb type)	–	TECH	TECH
Body coloured sideview mirrors	●	●	●
Power, heated sideview mirrors	●	●	●
Sideview mirror signal repeaters	–	+	●
Power folding sideview mirrors	–	PREM	TECH
Body coloured door handles	●	●	●
Deep privacy tint glass	●	●	●
Solar glass	●	●	●
Black bumpers	●	–	–
Body coloured bumpers	–	●	–
Piano black bumpers	–	PREM	●
Sport bumpers (red accents)	–	–	●
Sport side sills (red accents)	–	–	●
Roof rails	–	+	–
Windshield wiper de-icer	●	●	●
Aeroblade wipers	–	–	●
Front and rear splash guards	●	●	●

Safety	LX	EX	SX
Dual advanced front airbags	●	●	●
Dual front seat-mounted side airbags	●	●	●
Dual side curtain airbags	●	●	●
Front adjustable headrests	●	●	●
4-wheel disc brakes	●	●	●
4-wheel anti-lock braking system (ABS)	●	●	●
Electronic brake distribution (EBD)	●	●	●
Brake assist system (BAS)	●	●	●
Electronic stability control (ESC)	●	●	●
Vehicle stability management (VSM)	●	●	●
Hill assist control (HAC)	●	●	●
Front seatbelt pretensioners	●	●	●
Side-impact door beams	●	●	●
Impact-sensing door unlock	●	●	●
2 <sup>nd</sup> row lower anchors and top tethers for children (LATCH)	●	●	●
Child-safety rear door locks	●	●	●
Washer fluid warning light	●	●	●
Rearview camera <sup>1</sup>	–	●	●
Lane departure warning system <sup>1</sup>	–	TECH	–
Front collision warning system <sup>1</sup>	–	TECH	–
Blind spot detection <sup>1</sup>	–	PREM	TECH
Rear cross traffic alert <sup>1</sup>	–	PREM	TECH

Comfort & Convenience	LX	EX	SX
Air conditioning	AT	●	●
Automatic climate control with air ionizer	–	+	●
AM/FM/MP3/satellite radio <sup>5</sup>	●	●	●
6-speakers	●	●	●
8-speakers	–	TECH	TECH
Sound-reactive speaker lights	–	+	●
5" Display Audio	–	●	–
7" Display Audio	–	+	●
Harman Kardon <sup>®</sup> premium audio system <sup>2</sup>	–	TECH	TECH
8" multimedia interface with voice-activated navigation <sup>3</sup>	–	TECH	TECH
Bluetooth <sup>®</sup> hands-free technology <sup>4</sup>	●	●	●
Android Auto <sup>®</sup> smartphone integration <sup>7,8</sup>	–	+	●
Apple CarPlay <sup>®</sup> smartphone integration <sup>6,8</sup>	–	+	●
Steering wheel audio controls with voice command function	●	●	●
iPod <sup>®</sup> /USB/AUX inputs	●	●	●
Dual USB charge ports (high output)	–	PREM	TECH
Enhanced TFT/LCD Supervision instrument cluster	–	PREM	–
Sport TFT/LCD Supervision instrument cluster	–	–	●
Power windows	●	●	●
Express up/down front windows	–	●	●
Power door locks	●	●	●
Keyless entry	AT	●	●
Smart Key with push button start	–	+	●
Auto-dimming rearview mirror	–	PREM	TECH
Tilt and telescopic steering wheel	●	●	●
Heated steering wheel - late availability (EX)	–	●	●
FlexSteer <sup>™</sup> driver selectable steering assist	●	–	–
Drive Mode Select (Eco/Normal/Sport)	AT	●	●
Cruise control	–	●	●
Escort lights	●	●	●
Trip computer	●	●	●
LED cabin lighting	–	PREM	TECH
Smart release hatch	–	+	●
Cargo cover with luggage net	–	PREM	TECH

### Seating & Trim

Cloth seats	●	●	–
Leather seats	–	PREM	–
Sport seats (cloth and leather)	–	–	●
Orange stitching and accents	–	–	●
Heated front seats	–	●	●
Heated rear seats	–	TECH	TECH
Air-cooled front seats	–	TECH	–
Power adjustable driver's seat with lumbar support	–	PREM	TECH
Power adjustable passenger seat	–	TECH	TECH
60:40 folding rear seats	●	●	●
Rear centre armrest	–	●	●
Height adjustable driver seat	●	●	●
Leather-wrapped steering wheel	–	●	●
Sport steering wheel (D-shaped)	–	–	●
Leather-wrapped shift knob	–	●	●
Piano black interior trim	–	●	●

● = Standard ○ = Optional – = Not available AT = Automatic transmission  
+ = EX Plus package TECH = Tech package PREM = Premium package

## SPECIFICATIONS

Engine	LX	EX	SX
Type	1.6L, GDI, 4-cylinder	2.0L, GDI, 4-cylinder	1.6L, Turbo-GDI, 4 cylinder
Configuration	Inline 4 cylinder, DOHC	Inline 4 cylinder, DOHC	Inline 4 cylinder, DOHC
Material	All aluminum	All aluminum	All aluminum
Valve train	4-valves per cylinder, Dual-cam variable valve timing (D-CVVT)	4-valves per cylinder, Dual-cam variable valve timing (D-CVVT)	4-valves per cylinder, Dual-cam variable valve timing (D-CVVT)
Horsepower	130 hp @ 6,300 rpm	161 hp @ 6,200 rpm	201 hp @ 6,000 rpm
Torque	118 lb.-ft. @ 4,850 rpm	149 lb.-ft. @ 4,700 rpm	195 lb.-ft. @ 1,500 - 4,500 rpm
Intake	Variable Intake System (VIS)	Variable Intake System (VIS)	Twin-scroll turbocharger
Fuel system	Gas Direct Injection (GDI)	Gas Direct Injection (GDI)	Gas Direct Injection (GDI)
Recommended fuel	Regular unleaded	Regular unleaded	Regular unleaded
Compression ratio	11.0:1	11.5:1	9.5:1
Transmission	6-speed manual; Available 6-speed Sportmatic automatic	6-speed Sportmatic automatic	7-speed, dual-clutch Sportmatic automatic

### Dimensions, mm (in.)

Wheelbase	2,570 (101.2)
Length	4,140 (163.0)
Width	1,800 (70.9)
Height with/without roof rails	1,625/1,600 (64.0/63.0)
Head room (front/rear)	1,006/1,003 (39.6/39.5)
Head room with sunroof (front/rear)	962/963 (37.9/37.9)
Shoulder room (front/rear)	1,410/1,390 (55.5/54.7)
Leg room (front/rear)	1,040/994 (40.9/39.1)
Hip room (front/rear)	1,352/1,252 (53.2/49.3)

Body & Chassis	
Layout	Front engine, front wheel drive
Body type	Steel unibody
Front suspension	Independent, MacPherson strut, coil springs with gas shock absorber
Rear suspension	Coupled torsion beam axle with gas shock absorber
Steering	Electric power steering

### Brakes

Type	4-wheel disc
ABS	4 sensor, 4 channel
Front, mm (in.)	280 (11.0) vented discs, SX: 305 (12.0) vented discs
Rear, mm (in.)	254 (10.0) solid discs

Curb Weight, kg (lb.)	LX	EX	SX
Manual transmission	1,277-1,308 (2,815-2,884)	–	–
Automatic transmission	1,303-1,335 (2,872-2,943)	1,346-1,435 (2,967-3,163)	1,397-1,466 (3,079-3,232)

### Capacities, L (cu. ft.)

Passenger volume	2,861 (101)
Cargo capacity, rear seats folded	1,402 (49.5)
Cargo capacity, rear seats up	532 (18.8)
Fuel tank capacity, L (Imp. gal.)	54 (11.9)

Fuel Economy, Highway/City, L/100km	LX	EX	SX
Manual transmission	7.8/9.7	–	–
Automatic transmission	7.8/9.4	7.8/9.5	7.7/9.1



## EXTERIOR COLOURS

Titanium (P)  
BW/BC/BL



Alien (P)  
BC/BL



Wild Orange (P)  
BC/BL/SL



Onyx (P)  
BW/BC/BL/SL



Inferno Red (P)  
BW/BC/BL/SL



Polar  
BW/BC/BL/SL



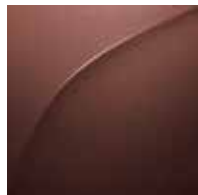
Caribbean Blue (P)  
BC/BL



Mysterious Blue (P)  
BC/BL



Caffeine Brown (P)  
BC/BL



P = Premium paint  
The exterior and interior colours in this brochure are as close to the actual vehicle production colours as the printing process allows.

## INTERIOR COLOURS

Black woven cloth (BW)  
LX models



Black knit cloth (BC)  
EX and EX+ models



Black leather (BL)  
EX Premium and EX Tech models



Black cloth/leather (SL)  
SX models



## WHEELS

16" steel wheel cover



17" alloy wheel



18" machined-finish alloy wheel



18" sport alloy wheel



Kia Accessories are built to the same high standards of quality as your vehicle. That means they fit right, work right, and look great.

Choose from a wide range of interior and exterior accessories to make your Kia fit your personality and lifestyle. From alloy wheels to sport pedals, travel-friendly rooftop carriers to all-weather floor mats and more, your Kia Dealer has it all.

Talk to your Dealer today or visit [kia.ca](http://kia.ca) to explore accessory options for your Kia.

Sport visors



Cargo box



Accessory wheels



Rear spoiler



Sport pedals



\* Available accessories may vary. See Dealer for details. Images shown for illustration purposes only.

1. Please note that your vehicle may not be equipped with all features described. This also applies to safety-related systems and functions. None of the features we describe are intended to replace the driver's responsibility to exercise due care while driving and are not a substitute for safe driving practices. Some features may have technological limitations. For additional information regarding the various features, including their limitations and restrictions, please refer to your vehicle's Owner's Manual. 2. Harman Kardon® is a registered trademark of Harman International Industries, Incorporated. 3. When equipped with the navigation system, French voice commands may be limited. 4. The Bluetooth® word mark and logos are registered trademarks owned by Bluetooth SIG, Inc. A compatible Bluetooth wireless technology-enabled cell phone is required to use Bluetooth hands-free wireless technology. 5. SiriusXM® satellite radio service includes 3 month trial and is available in the 10 provinces and three territories of Canada, and the 48 contiguous states of the U.S. Monthly subscription sold separately after three trial months. 6. Apple, the Apple logo, CarPlay, and iPod are trademarks of Apple Inc., registered in the US and other countries. App Store is a service mark of Apple Inc. 7. Google, Google Play, Google Maps, and Android Auto are trademarks of Google Inc. Google Maps ©2016 Google. 8. Compatible smartphone required. Data rates may apply, please check with your wireless service provider. 9. The Kia 5-year/100,000-km warranty includes various warranties and roadside assistance. Some restrictions apply. For more information call us at 1-877-542-2886 or visit to [kia.ca](http://kia.ca).



 [facebook.com/kiacanada](https://facebook.com/kiacanada)

 [twitter.com/kiacanada](https://twitter.com/kiacanada)

 [youtube.com/kiacanada](https://youtube.com/kiacanada)

[kia.ca](https://kia.ca)



The Power to Surprise

2017 SOUL

All information contained herein was accurate and correct at the time of printing. Kia Canada Inc. reserves the right to make changes at any time without notice, and without any obligations as to colours, materials, specifications, features, accessories, packages, models and any applicable programs. Some vehicles shown may include optional equipment or may not be exactly as shown. Kia Canada Inc., by the publication and dissemination of this material, does not create any warranties, either expressed or implied, to any Kia products. See your Kia dealer or website for further details. Reproduction of the contents of this material without the expressed written approval of Kia Canada Inc. is prohibited. © Copyright 2016 Kia Canada Inc. Printed in Canada, December 2016.

Part# 99999 03B2E17