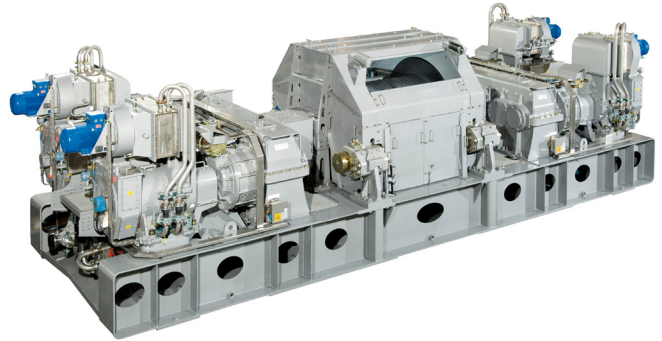


UltraHoist Drawworks System

UH 3G-1250-5600-DDW

Cameron's UltraHoist™ drawworks deliver efficient hoisting and lowering during drilling, tripping and handling operations. All UltraHoist drawworks are AC and gear-driven. The three-speed version offers operational flexibility, both at high speeds and high loads.

The UltraHoist 1250-5600 is a fully-integrated drawworks system, designed to hoist and lower defined loads and velocities during tripping and drilling modes. The UltraHoist is designed for offshore installation and is centered on maintaining personnel safety and increasing equipment service life and long-term optimal performance through component selection and system design.



Main Features

- Three-speed transmissions used between AC motors and fixed speed gearbox provide unique fast line speed and pull characteristics
- Lebus grooved drum for 2" drill line – complete with kickback rollers and easily removable guards
- Easily removable cable anchor
- Control system interfaces with the Zone Management System via the C-NET network to enable communication with other system PLC, such as the anti-collision system
- Custom PLC software ensures smooth and natural operations for the driller
- Built-in, self-diagnostic functions automatically warn for service and overhaul of main components
- Onboard HPU systems for brakes and lubrications fitted with dual pumps and motors
- Remote-operated fast shift mechanism in the gearbox to avoid gear-shift problems and load-dropping
- Internal gearboxes use a keyless design to avoid stress configurations

Safety Features

- Fail-safe braking system comprised of two brake discs, one at each side of the drum, and two calipers with brake pads acting on each disc
- Braking capacity of the emergency brakes equal to 200% of maximum line pull
- Automatic brake monitoring system, including brake slip detection, drum creep detection and drum response detection
- Two separately fused emergency shutdown circuits
- Integrated crown and floor saver provides full control of the various braking systems

Technical Specifications	SI	Imperial (US)
Power rating drawworks duty	4180 kW	5600 hp
Maximum wire pull on 16 lines	1133 tonnes	1250 tons
Maximum fast line pull	87 tonnes	96.4 tons
Maximum block speed on 14 lines	2.29 m/sec	451 ft/min
Drum size (diameter x length)	1422 mm x 1905 mm	56" x 75"
Design	API 7K drilling equipment, DNV-OS-E101 drilling plant Any third-party approval is available up on request	
Area classification	Zone 1, IIB, T3	

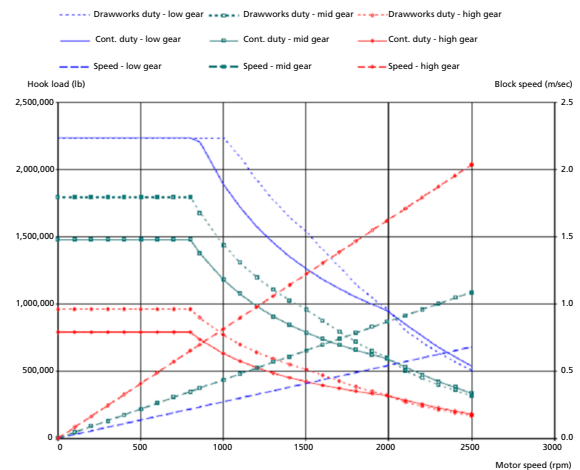
Scope of Supply	Options
Drawworks skid	Foundation bolts
Drum and drum support	Sound attenuation housing
Dual brake disks and calipers	Forced air cooling system for AC motors
Single-speed gearbox	Lifting spreader bar
Dual three-speed planetary transmissions	AC drives
AC motors	Operator's control panel
Water to air cooling system for AC motors	
HPU for lube oil and gearshift system	
HPU for brake control system	
UltraHoist control system, including PLC with software as needed for safe and reliable control and monitoring of all drawworks functions	
Local control panel (for cut-and-slip operations)	
Block reset sensors	
Floor/crown saver sensors	
User manuals/documentation	

Hook Load and Speed Chart

* Calculations based on 16 lines, layer 2 over Lebus bar

** Motor speed limited to 2500 rpm

*** Hook load given is in lb, block speed in m/sec



4601 Westway Park Blvd.
Houston, TX 77041
USA
Tel 1 713 939 2211

Andøyfaret 3
N-4623 Kristiansand S.
Norway
Tel 47 380 00 570