

How to use this application step-by-step?

Step 1 - Selection of the main filters for the analysis

During the first step of the application, the user will have to choose the main filters for his analysis. These include:

- a) main **category** (e.g. geography, demography & society, economy & labour, sectoral structure, business characteristics and innovation system)

Regional Assets Mapping

Selection of category

Year:

All 2006 2007 2008 2009 2010 2011 2012 2013 2014 2015 2016

Choose regions to include in your search:

AT12 – Niederösterreich ✕ AT13 – Wien ✕ AT22 – Steiermark ✕ AT31 – Oberösterreich ✕ AT32 – Salzburg ✕

AT33 – Tirol ✕ AT34 – Vorarlberg ✕

Filter by variable:

Gross Domestic Product (GDP)

Group by: Region Variable

Clear

Actions

- Export
- Preview
- Structure
- Help

Figure 1a: Step 1 – Selection of category.

- b) years included in the analysis

Regional Assets Mapping

Selection of years

Year:

All 2006 2007 2008 2009 2010 2011 2012 2013 2014 2015 2016

Choose regions to include in your search:

AT12 – Niederösterreich ✕ AT13 – Wien ✕ AT22 – Steiermark ✕ AT31 – Oberösterreich ✕ AT32 – Salzburg ✕

AT33 – Tirol ✕ AT34 – Vorarlberg ✕

Filter by variable:

Gross Domestic Product (GDP)

Group by: Region Variable

Clear

Actions

- Export
- Preview
- Structure
- Help

Figure 1b: Step 1 – Selection of years.

c) regions that are going to be included

Regional Assets Mapping

Geography Demography **Economy** Sectoral Business Innovation

Year:
All 2006 2007 2008 2009 2010 2011 2012 2013 2014 2015 2016

Choose regions to include in your search:

AT12 – Niederösterreich ✕ AT13 – Wien ✕ AT22 – Steiermark ✕ AT31 – Oberösterreich ✕ AT32 – Salzburg ✕
AT33 – Tirol ✕ AT34 – Vorarlberg ✕

Filter by variable:
Gross Domestic Product (GDP)

Group by: Region Variable

Clear Search

Actions
Export
Preview
Structure
Help

Selection of

Figure 1c: Step 1 – Selection of regions.

d) variables for the analysis

Regional Assets Mapping

Geography Demography **Economy** Sectoral Business Innovation

Year:
All 2006 2007 2008 2009 2010 2011 2012 2013 2014 2015 2016

Choose regions to include in your search:

AT12 – Niederösterreich ✕ AT13 – Wien ✕ AT22 – Steiermark ✕ AT31 – Oberösterreich ✕ AT32 – Salzburg ✕
AT33 – Tirol ✕ AT34 – Vorarlberg ✕

Filter by variable:
Gross Domestic Product (GDP)

Group by: Region Variable

Clear Search

Actions
Export
Preview
Structure
Help

Selection of

Figure 1d: Step 1 – Selection of variable.

It is important to notice that the application gives to users the opportunity to group their results either based on regions, or based on variables. Thus, we can obtain results in two forms: i) results for a specific variable for a number of regions; and ii) results for a number of different variables for a specific region. These two different options provide the opportunity to perform comparative analysis not only within a region, but also between different EU regions.

Step 2 - Extraction of the selected data in table format

In the second step of the application, the user will be able to see his/her selected indicators in a table format by pressing the *Search* button. He/she is also able to reset the selection criteria by pressing the *Clear* button (Fig. 2a).

Regional Assets Mapping

Geography Demography **Economy** Sectoral Business Innovation

Year: All 2006 2007 2008 2009 2010 2011 2012 2013 2014 2015 2016

Choose regions to include in your search:

AT12 – Niederösterreich * AT13 – Wien * AT22 – Steiermark * AT31 – Oberösterreich * AT32 – Salzburg *
AT33 – Tirol * AT34 – Vorarlberg *

Filter by variable:
Gross Domestic Product (GDP)

Group by: Region Variable

Clear

Gross Domestic Product (GDP)
complementary description

Region	2010	2011	2012
AT12 – Niederösterreich	46,186	48,475	49,687
AT13 – Wien	77,518	80,022	81,343
AT22 – Steiermark	37,446	39,398	40,823
AT31 – Oberösterreich	49,574	52,466	53,907
AT32 – Salzburg	21,680	22,754	23,622
AT33 – Tirol	25,533	26,869	28,135
AT34 – Vorarlberg	13,486	14,199	14,547

Download data in a .xlsx format

Actions: Export Preview Structure Help

Clear & Search buttons

Selected indicators in a table format

Figure 2a: Step 2 - Extraction of the data in table format.

An additional functionality of the application offers the opportunity to download the selected data at an excel format (.xlsx). This can be done by pressing the *Download* button at the end of the table (Fig. 2b). The pop-up window gives the user the opportunity to open the .xlsx file or Save it in his/her computer.

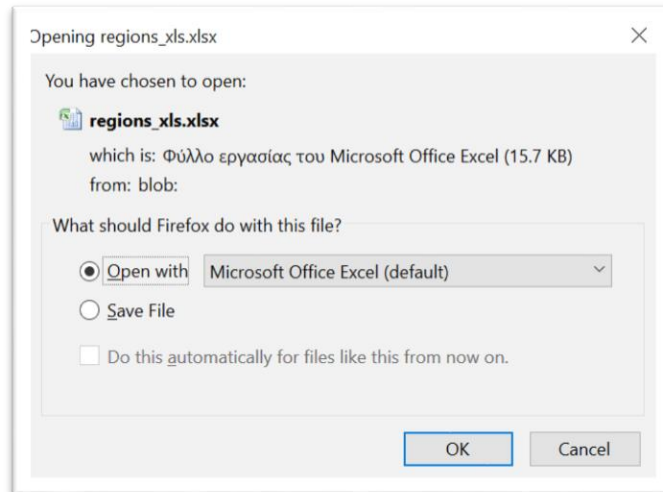


Figure 2b: Pop-up window for downloading the data in a table format.

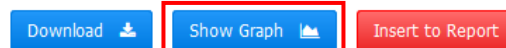
Step 3 - Selection of the appropriate visualisation mode for the data

The third step of the application offers the opportunity to select the appropriate visualisation mode for the data by pressing the *Show Graph* button (Fig. 3a). The choice must be done between two different visualisation modes: line graphs and bar charts. In both cases, it is possible to export the produced graphs in an image format (.png) by pressing the *Export* button at the bottom of the graph.

Gross Domestic Product (GDP)

complementary description

Region	2010	2011	2012
AT12 – Niederösterreich	46,186	48,475	49,687
AT13 – Wien	77,518	80,022	81,343
AT22 – Steiermark	37,446	39,398	40,823
AT31 – Oberösterreich	49,574	52,466	53,907
AT32 – Salzburg	21,680	22,754	23,622
AT33 – Tirol	25,533	26,869	28,135
AT34 – Vorarlberg	13,486	14,199	14,547

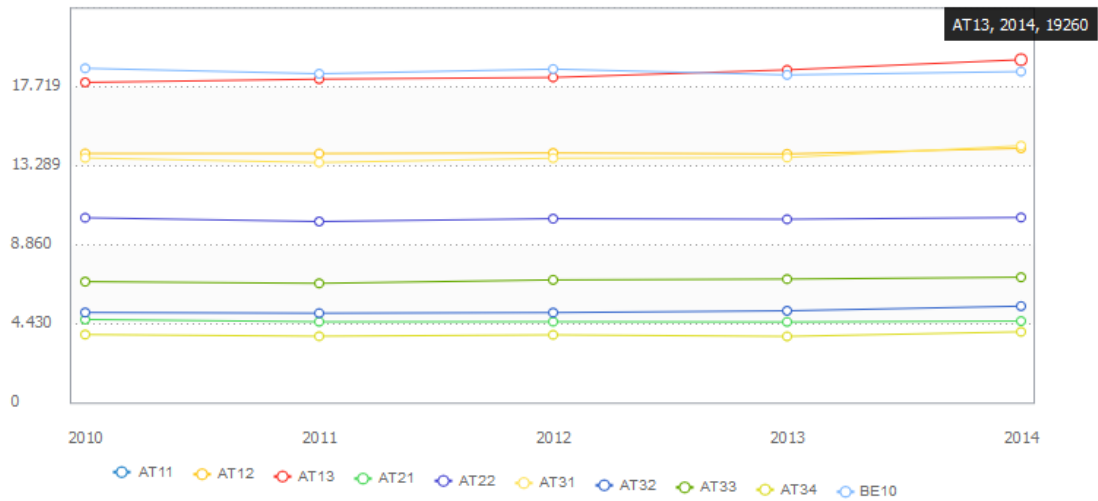


Selection of the visualization mode

Figure 3a: Step 3 Selection of the appropriate visualisation mode for the data.

Live Births per annum

complementary description



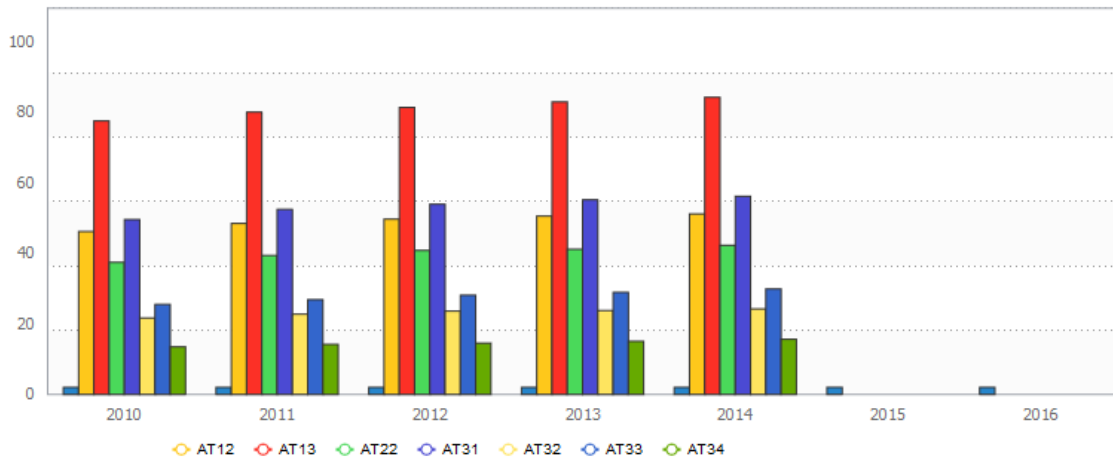
Export as Image

Insert to Report

Figure 3b: Line graph produced by the Regional Assets Mapping application.

Gross Domestic Product (GDP)

complementary description



Export as Image

Figure 3c: Bar chart produced by the Regional Assets Mapping application.

You can download the full guide of the application [here](#).