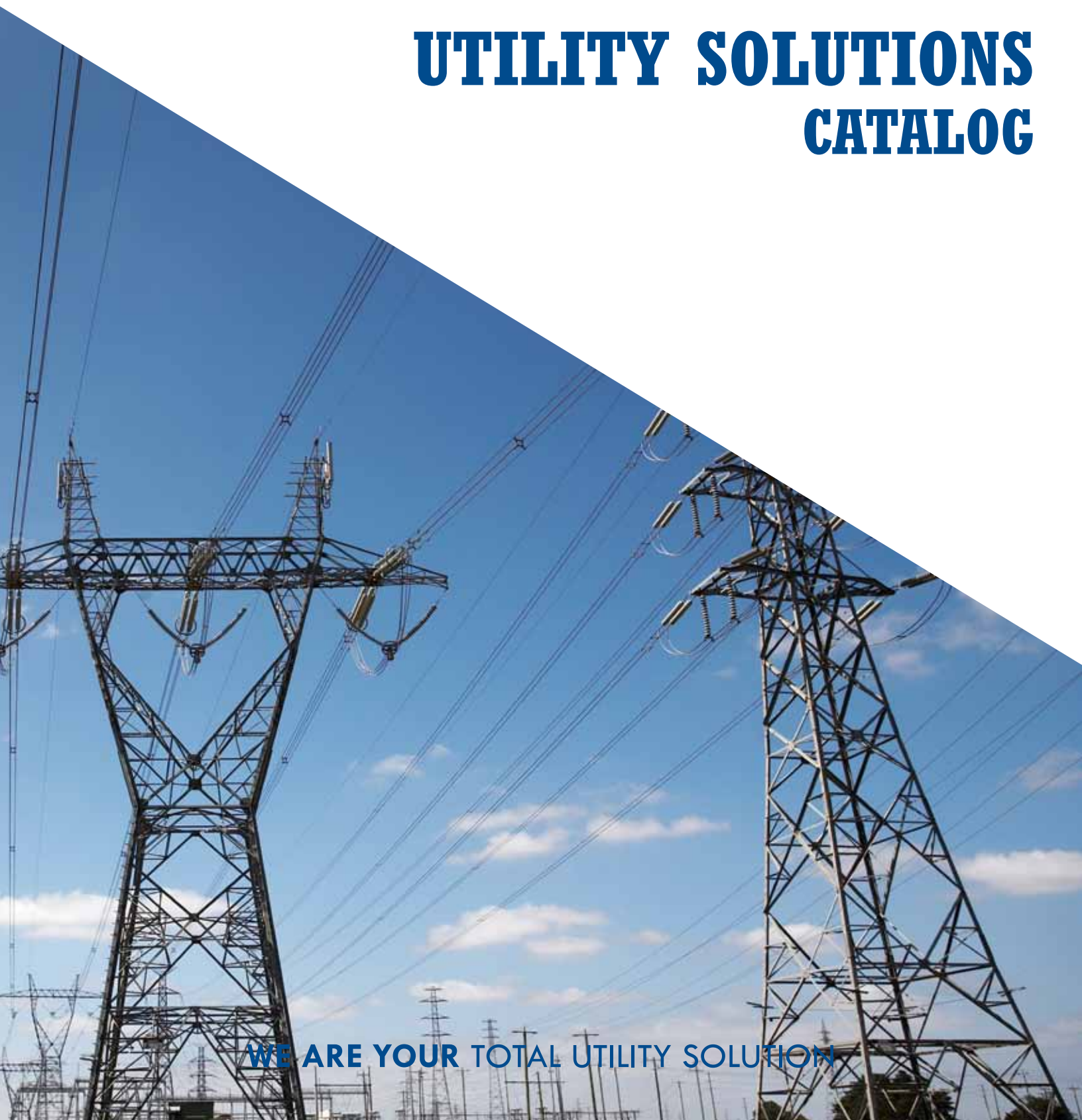




**STATE ELECTRIC
SUPPLY CO.**
CUSTOMER FOCUSED, QUALITY DRIVEN

UTILITY SOLUTIONS CATALOG



WE ARE YOUR TOTAL UTILITY SOLUTION

WE ARE YOUR TOTAL UTILITY SOLUTION

www.stateelectric.com

TABLE AND CONTENTS

Adapters	4
Arms	4
Bands	4-5
Bayonets	5
Bolts	6-8
Braces	8-9
Brackets	9-13
Clamps	13-15
Clevis	15-16
Clips	17
Eyenuts	17
Eyes	18
Guards & Straps	18
Guards	19
Guy Markers	19-20
Hangers	21
Hooks	21
Irons	22
Links	22
Nuts	22-23
Pins	23-25
Plates	26
Racks	27-28
Rods	28
Screws	29
Shackles	29
Sidewalk Guy Fittings	29
Sleeves	30
Spacers	30
Steps	30
Straps	31
Supports	31
Thimbles	31
Tongues	31
Washers	32
Wireholders	32-33
Poleline Hardware Diagram	34
Definitions	35
Index	36-38
Locations	39

All information in this catalog is presented solely as a guide to product selection and is believed to be reliable. All printing errors are subject to correction in subsequent releases of this catalog. Although State Electric Supply Company has taken precautions to ensure the accuracy of the product specifications at the time of publication, the specifications of all products contained herein are subject to change without notice.

WE ARE YOUR TOTAL UTILITY SOLUTION

www.stateelectric.com

Issue 1 6.13.16

ADAPTERS

THIMBLE

Used to change 1-inch pin insulator thread to 1 3/8-inch pin insulator thread.



Hubbell Power Systems	MacLean Power Systems	Dimensions (in.)		
		Exterior Thread Diameter	Interior Thread Diameter	Overall Length
4257	J4023	1 3/8	1	2 1/4

ARMS

CABLE EXTENSION

For suspending cables at a distance from the pole, a No. 7903 Cable Suspension Clamp is usually used under the arm attached through the center slot to a 5/8" machine bolt with a washer under the bolt head. Cable extension from the pole is 23" for No. 7920, 41" for No. 7921. Cable clamp with attachment bolt and pole mounting bolts, or lag screws, must be ordered separately.



Hubbell Power Systems	MacLean Power Systems
7920	J7920
7921	J7921

BANDS

POLE ACCESSORIES

Deadend clevis has 13/16" hole to match rectangular holes in bands, and is attached with cone head bolt. Guy clips made in two pieces: top, 5/16" x 2 1/2" steel; bottom, 3/16" x 2 1/2" steel. A 3/4" x 2 1/2" machine bolt with cotter pin fastens thimble.



Hubbell Power Systems	MacLean Power Systems
6278	N/A
PS6280	N/A
P451016	N/A

BANDS

POLE ADJUSTABLE HEAVY STYLE

These are 3/16" x 4" flat steel bands, shipped assembled with one 3/4 x 4" curved bolt and one 3/4 x 2 1/2" cone head bolt. Hot dip galvanized. Extra cone head bolts, for attaching deadend clevises and guy clips, must be ordered separately. One to eight attachments can be made from each pole band.



POLE ADJUSTABLE

Use steel Pole Bands on wood poles. Take-offs for guy and insulation attachments can be made by using connecting links (see below). Bands are shipped unassembled.



Hubbell Power Systems	MacLean Power Systems
6276	J6280
6277	J6270

Hubbell Power Systems	MacLean Power Systems
C2030194	J6644
C2030197	J6641
C2030200	J6684

POLE SECONDARY RACK

For attaching secondary racks to tubular metal poles. Bands are equipped with 5/8" x 2" carriage bolts for attaching the racks, and 1/2" x 15/8" oval-shoulder clamp bolts for tightening bands on pole. Hot dip galvanized 1/4" x 1 1/2" steel. Made in two styles, the single type for attaching one rack and the double type for two racks.



SINGLE TYPE

Hubbell Power Systems	MacLean Power Systems	Pole O.D. (in.)
636412	N/A	5
PS6366	N/A	6 3/8
PS6367	N/A	7 5/8
PS6368	N/A	8 5/8

DOUBLE TYPE

Hubbell Power Systems	MacLean Power Systems	Pole O.D. (in.)
637412	N/A	5
PS6376	N/A	6 3/8
PS6377	N/A	7 5/8
PS6378	N/A	8 5/8

POLE CONNECTING LINKS

Designed for use with 4-Way Adjustable Pole Bands, above. For insulator or guy attachments. Has a 1 1/4" diameter hole on one end and 15/16" holes on the other end.



Hubbell Power Systems	MacLean Power Systems	Steel Size (in.)	Length (in.)
C2030183	N/A	1/4 x 3	7 1/2

UTILITY

BAYONETS

GROUND WIRE SUPPORTS, SHIELD WIRE

For supporting overhead ground wire on wood or steel poles. Bayonets have an 11/16" hole and an 11/16" pole-mounting slot to allow for inaccuracy in boring holes. Holes at top of bayonet allow use of groundwire clamps (Not included). Bolts used to fasten corner bayonets together are included. Pole-mounting bolts and ground-wire clamps are not included.



Hubbell Power Systems	MacLean Power Systems	Angle Size (in.)
5436	J1130	2 x 2 x 1/4
5466	J1132	2 1/2 x 2 1/2 x 1/4
PS5484	N/A	3 x 3 x 1/4

WE ARE YOUR TOTAL UTILITY SOLUTION

www.stateelectric.com

CARRIAGE

Carriage Bolts have square nuts, finished points and rolled threads. Standard heads have square shoulders. Open-hearth steel.



3/8" DIAMETER

Hubbell Power Systems	MacLean Power Systems
8634	J8634
863412	J8634-1/2
8635	J8635
8636	J8636
8637	J8637

1/2" DIAMETER

Hubbell Power Systems	MacLean Power Systems
8645	J8645
864512	J8645-1/2
8646	J8646
8647	J8647

CLEVIS

For supporting crossarm suspension insulator strings. Cotter bolt is 23/4" long and comes with cotter pin and hex nut. Clevis Bolts are drop-forged steel.



Hubbell Power Systems	MacLean Power Systems
15808	J7808
15810	J7810
15812	J7812
15814	J7814
15828	N/A
15830	N/A
15832	N/A
15834	N/A

DOUBLE-ARMING FULL THREAD

Bolts permit replacement ease in double arms and offer added flexibility of use. Cone type point for easy starting and driving-out without damage to threads. Each bolt provided with four square nuts.



1/2" SHANK DIAMETER

Hubbell Power Systems	MacLean Power Systems
8846	N/A
8848	N/A

3/8" DIAMETER

Hubbell Power Systems	MacLean Power Systems
8634	J8634
863412	J8634-1/2
8635	J8635
8636	J8636
8637	J8637

1/2" DIAMETER

Hubbell Power Systems	MacLean Power Systems
8645	J8645
864512	J8645-1/2
8646	J8646
8647	J8647

DOUBLE-ARMING EYE

Bolts have a cone type point and are threaded to within 2" of the 1 1/2" x 2" eye. Three Square Nuts. Drop-forged steel.



5/8" DIAMETER

Hubbell Power Systems	MacLean Power Systems
19784	N/A
19786	N/A
19788	N/A
19790	N/A
19792	N/A

SCREW EYE

Gimlet-point lag-screw thread.



Hubbell Power Systems	MacLean Power Systems
29930	J8930
C2050094	N/A
8777	N/A

MACHINE

Are also called crossarm bolts or through bolts. Bolts have rolled threads and one square nut. Bolts six inches or longer have cone-type points.



3/8" DIAMETER

Hubbell Power Systems	MacLean Power Systems
8604	J8604
860412	J8604-1/2
8605	J8605
860512	N/A

1/2" DIAMETER

Hubbell Power Systems	MacLean Power Systems
870112	J8701-1/2
870412	N/A
8705	J8705
8706	J8706
8707	J8707
8708	J8708
8709	J8709
8710	J8710
8712	J8712
8714	J8714

OVALEYE

Bolts with 5/8" and 3/4" shanks have 1 1/2" x 2" ovaeyes. Drop-forged, galvanized steel bolts have cone type points and rolled threads.



1/2" SHANK DIAMETER 7/16 X 1 1/4" X 1 5/8" OVALEYE

Hubbell Power Systems	MacLean Power Systems
29939	N/A
29943	N/A

5/8" SHANK DIAMETER 9/16 X 1 1/2" X 2" OVALEYE

Hubbell Power Systems	MacLean Power Systems
29956	J9406
29958	J9408
29959	J9409
29960	J9410
29962	J9412
29964	J9414
29966	J9416
29968	J9418
29970	J9420

3/4" SHANK DIAMETER 5/8 X 1 1/2" X 2" OVALEYE

Hubbell Power Systems	MacLean Power Systems
29978	J9508
29980	J9510
29982	J9512
29984	J9514
29986	J9516
29988	J9518

5/8" DIAMETER

Hubbell Power Systems	MacLean Power Systems
8805	J8805
8806	J8806
8807	J8807
8808	J8808
8809	J8809
8810	J8810
8812	J8812
8814	J8814
8816	J8816
8818	J8818
8820	J8820
8822	J8822
8824	J8824

3/4" DIAMETER

Hubbell Power Systems	MacLean Power Systems
8908	J8908
8910	J8910
8912	J8912
8914	J8914
8916	J8916
8918	J8918
8920	J8920
8922	J8922
8924	J8924
8926	J8926

7/8" DIAMETER

Hubbell Power Systems	MacLean Power Systems
C2050254	J9064
C2050256	J9068
C2050258	J9072
C2050255	J9066
C2050257	J9070

WE ARE YOUR TOTAL UTILITY SOLUTION

www.stateelectric.com

BOLTS

THIMBLEYE

Contoured eye keeps guy strand from kinking, bending, or spreading. Drop-forged steel. Cone-type points. Eyes of angle bolts are offset 45 degrees.



Hubbell Power Systems		MacLean Power Systems		Length (in.)	Thread Length (in.)
Straight Bolt	Angle Bolt	Straight Bolt	Angle Bolt		
DG1F8	DG4F8	J8051	J8151	5/8 x 8	4
5510	5010	J8051	J8151	5/8 x 10	4
5512	5012	J8052	J8152	5/8 x 12	6
5514	5014	J8053	J8153	5/8 x 14	6
5516	5016	J8054	J8154	5/8 x 16	6
DG1F18	N/A	J8055	N/A	5/8 x 18	6
N/A	5110T	N/A	J8161	3/4 x 10	4
5612	5112T	J8062	J8162	3/4 x 12	6
5614	5114T	J8063	J8163	3/4 x 14	6

UPSET DOUBLE

Includes square nut, round washer, and cotter key on short end and Square nut and M-F locknut on long end.



UPSET SINGLE

Used in rural secondary construction. Has 5/8" thread diameter.



Hubbell Power Systems	MacLean Power Systems
7826	J2394
7828	J9120
7830	J2396
7832	J2398
7834	J9134

Hubbell Power Systems	MacLean Power Systems
7741	J2342-1/2
774112	J2343-1/2
7742	J2344-1/2
7743	J2346-1/2
7744	J2348-1/2

BRACES

CROSSARM ALLEY ARM

Used for side-arm construction. Furnished with lineman's steps.



Hubbell Power Systems	MacLean Power Systems	Length (ft.)	Angle Size (in.)	Holes (in.)	
				Arm Attach	Pole Attach
6979	J1522	5	1 3/4 x 1 3/4 x 3/16	9/16	9/16
6984	J1525	7	1 3/4 x 1 3/4 x 3/16	11/16	9/16
T2030367	N/A	10	2 x 2 x 1/4	11/16	11/16

SIDE ARM

Used for side-arm construction. Furnished with lineman's steps.



Hubbell Power Systems	MacLean Power Systems
6999	J1422

WE ARE YOUR TOTAL UTILITY SOLUTION

www.stateelectric.com

CROSSARM V

Furnished with 9/16" holes for crossarm mounting. 1 1/16" holes for pole mounting. The "1" series has a 9/16" x 1" slot in place of the 9/16" diameter crossarm mounting holes.



Hubbell Power Systems	MacLean Power Systems	Size of Angle
6940	J1506	1 1/2 x 1 1/2 x 3/16
6941	J1514	1 1/2 x 1 1/2 x 3/16
6942	J1508	1 1/2 x 1 1/2 x 3/16
6948	J1507	1 1/2 x 1 1/2 x 3/16
6953	J1510	1 3/4 x 1 3/4 x 3/16
6955	J1512	1 3/4 x 1 3/4 x 3/16
69401	J1506	1 1/2 x 1 1/2 x 3/16
69421	J1508	1 1/2 x 1 1/2 x 3/16

CROSSARM FLAT

Have rounded ends and are punched at one end with a 9/16" hole, with a 7/16" hole at the other end. Holes punched 1-inch from brace end to center of hole.



7 X 32 X 1 7/32 BRACES (IN.)

Hubbell Power Systems	MacLean Power Systems
7020	N/A
7026	J7126
7028	J7128
7030	J7130
7032	J7132

1/4 X 1 1/4 BRACES (IN.)

Hubbell Power Systems	MacLean Power Systems
7126	J7126
7128	J7128
7130	J7130
7132	J7132
C2030233	N/A
T2030459	N/A
T2060398	N/A

UTILITY

CORNER CONSTRUCTION

Used for small angles to deadend on pole. Has 1 1/2" x 2" drop-forged eyes, 12" extension. Mounting eyes are at right angles to take-off eye.



Hubbell Power Systems	MacLean Power Systems	Dimensions (in.)	
		Steel Size	Mounting Distance
5728	J7936	3/4 Rd.	12
C2060480	J7935	5/8 Rd.	12

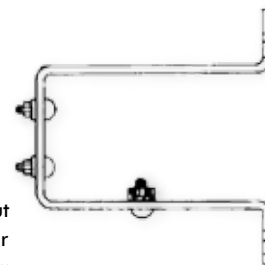
CUTOUT, ARRESTERS & POTHEAD

These brackets offer a wide variety of one, two or three unit mounting applications. Completely assembled brackets are available as well as individual parts for field adaptation. The one and two unit brackets can be mounted with the vertical member running either up or down the pole.

Hubbell Power Systems	MacLean Power Systems
C2060189	N/A
C2060190	N/A
C2060192	J26190
C2060193	N/A

CUTOUT, ARRESTERS & POTHEAD

This "D" type bracket is used to mount cutouts and/or arresters directly to the pole. Three brackets may be used for three-phase application. Can be conveniently mounted or removed without removing bolts. Clean, quick mounting for single-phase application without crossarm or special pole bands.



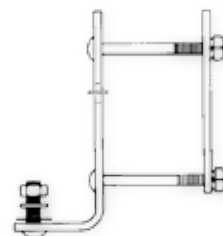
Galvanized 3/8" x 2" steel, 7.25 or 12-inches of clearance to the face of the pole. Mounting holes accept the L portion of the NEMA cutout crossarm bracket. A grounding lug connector is provided (on C2090299/J24665 only), along with two 3/8" x 1 1/2" carriage bolts with nut, round washer and lock washer.

Hubbell Power Systems	MacLean Power Systems
C2060299	J24655
C2060547	N/A

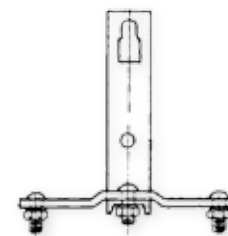
CUTOUT & ARRESTER

Complete with bolts, nuts and washers. Crossarm brackets adjust to fit arms from 3" x 4" to 4" x 5".

Hubbell Power Systems	MacLean Power Systems	Clearance Dimensions (in.)
		Crossarm to Mtg. Bolt
C2060127	J24515	2 9/16
C2060283	J24712	2 5/8
C2060280	J24711	5 1/4
C2060236	N/A	Pole to Mtg. Strap 5"



CROSSARM BRACKET



POLE BRACKET

EXTENSION

Where obstructions are to be overcome and where proper clearances are required, this bracket is fastened to the pole for mounting secondary racks. Made of hot-galvanized 9-gauge steel, it is equipped with a 5/8" x 2" carriage bolt. Curved back is 3" wide.



Hubbell Power Systems	MacLean Power Systems	Dimensions (in.)		
		Mounting Holes		Extension
		Center	Side	
PS2355	N/A	11/16	9/16	6
2357	J2357	11/16	9/16	9

NEUTRAL OFFSET

Designed to support the neutral wire well away from the pole. Used primarily on rural open wire construction where long spans are common and additional clearance or climbing space is required. Full-threaded 25" rod; 5/8" pin accepts ANSI 53-2 spool insulator.



Hubbell Power Systems	MacLean Power Systems	Dimensions (in.)		
		Arm Length	Rod Diameter	Pole Mounting Hole Diameter
C2060004	J2552	15	5/8	1/2

NEUTRAL WIRE

Used where a neutral wire is used as one of a 3-phase circuit. Has 1 1/16" mounting slots. Non-insulating.



Hubbell Power Systems	MacLean Power Systems	Wire Size (in.)	Length Pole Bearing Surface (in.)
3470	NWB5	1/2 or under	2 1/2

POLE TOP

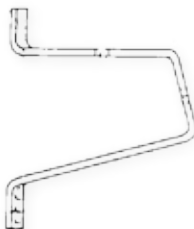
This bracket can be used with two pole-top pins to give additional clearance from the pole. It is mounted to the pole with 5/8" double arming bolts, extending the spread between insulators by 4" in addition to the pole diameter. The bottom slot is 1 1/16" x 1 1/4" for easy adjustment. Bracket pipe spacers may be required.



Hubbell Power Systems	MacLean Power Systems	Dimensions (in.)			
		Hole Diameter	Overall Height	Hole Spacing	Steel Size
2157	N/A	1 1/18	10 1/2	8	1/4 x 3

POST INSULATOR CURVED BASE

This bracket can be used for mounting distribution post-type insulators from 15 kV to 34.5 kV on the side of the pole. The base has a pole-shape back for convenient installation. Brackets can be placed in a phase-overphase arrangement or can be mounted on opposite sides of the pole for "armless" construction. Insulators not included.



Hubbell Power Systems	MacLean Power Systems
C2060009	J25256-2
C2060010	N/A
C2060011	N/A

POST INSULATOR SIDE MOUNTED

The bracket is formed of high-quality 3/8" x 2 1/2" bar. It can be utilized to mount distribution post insulators from 15 kV to 34.5 kV.



Hubbell Power Systems		MacLean Power Systems		Pole Mounting Bolts (in.)	Insulator Stud Bolts (in.)
13/16" Hole	11/16" Hole	13/16" Hole	11/16" Hole		
C2060209	16919	J25256-2	N/A	Two 5/8	3/4
C2060162	N/A	SFHJB-85-5-30	N/A	Two 5/8	3/4

POST INSULATOR UNI-BRACKETS

Chance Uni-Brackets are a clean-appearing, low-cost method of mounting three post-type insulators atop a pole completely eliminating the crossarm. The brackets can be installed on the pole in less than five minutes, requiring only two 3/4" bolts for attachment. Uni-Brackets fit poles having a pole-top diameter from 6" to 8 1/2". Slot on top is 1 1/16" x 2 1/4".



The brackets can be adapted to a variety of distribution construction using post-type insulators from 15 through 34.5 kV.

Hubbell Power Systems	MacLean Power Systems	Insulator Stud Bolts (in.)
9183	N/A	5/8

SERVICE DEADEND

Attaches to 1 1/4" through 3" diameter service masts. Front strap is rounded to prevent damage to bail of the service clamp. Square hole at end of the front slot captures the carriage bolt head during installation and prevents slippage after installation.



Hubbell Power Systems	MacLean Power Systems	Adjustments (in.)
C2060169	J0590	1 3/4 - 3

TELEPHONE HOUSE

Used where the pole lead attaches to the building at an angle or to carry leads around the corner of a building. Used with porcelain spool insulator and a bolt which are not included.



Hubbell Power Systems	MacLean Power Systems	Dimensions (in.)		
		Mounting Holes	Insulator Holes	Steel Size
8205	J2584	9/32	13/32	1/2 x 3/16

TRANSFORMER SECONDARY LEAD

The Chance Secondary Lead Transformer Bracket is a device that serves as a support for secondary lead wires. Made to clamp over the rolled edge at the bottom of the transformer, it fits all popular distribution transformers with steel tank. Clamp and bolt are hot dip galvanized steel. Bolt end has a plastic cap to prevent scratching the outer surface of the transformer. Furnished as a bracket or with insulator assembled.



Hubbell Power Systems	MacLean Power Systems	Dimensions (in.)	
		Size of Insulator Bolt	Steel Size of Clamp
9113S	J6765A	1/2 x 5	5/16 x 1 1/4
9114S	J6765	5/8 x 6	5/16 x 1 1/4

CLAMPS

BONDING

Bonding Clamps make a dependable mechanical and electrical pressure contact between guy strand and anchor rod, when the guy is part of the grounding system. Used on Thimbleye and Angle-Thimbleye bolts to keep hardware-to-guy contacts tight. Also used to prevent excessive wear on guy strands and protect galvanizing. Maintains electrical continuity.



FOR POWER INSTALLED SCREW ANCHORS

Hubbell Power Systems	MacLean Power Systems	Rod Type and Size (in.)
G5067	J26714	Thimbleye, 1/2 & 5/8
G5068	J26715	Thimbleye, 3/4 & 1
G5069	J26716	Twineye, 5/8, 3/4 & 1
C2030148	N/A	Tripleye, 5/8, 3/4 & 1

EXPANDING ANCHORS & ROCK ANCHORS

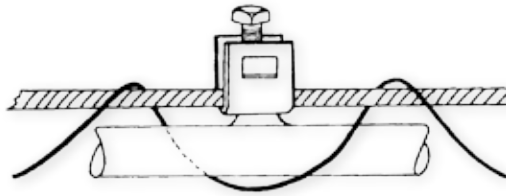
Hubbell Power Systems	MacLean Power Systems	Rod Type and Size (in.)
G5060	J3230	Thimbleye, 1/2 & 5/8
G5061	J3231	Twineye, 5/8, 3/4 & 1
G5063	J3233	Tripleye 3/4 & 1

FOR NO-WRENCH SCREW ANCHORS

Hubbell Power Systems	MacLean Power Systems	Rod Type and Size (in.)
G5065	J3230	Thimbleye, 1/2 & 5/8
G5063	J3233	Tripleye 3/4 & 1

GROUND

Connection is soldered to the cable sheath and mechanically clamped to the messenger wire. The bolt can be removed so that the clamp can be dropped over the messenger.



Hubbell Power Systems	MacLean Power Systems	Steel Size (in.)	Length (in.)	Bolt Size (in.)
7956	N/A	3/16 x 1 3/4	1 3/4	1 3/4

GROUND WIRE

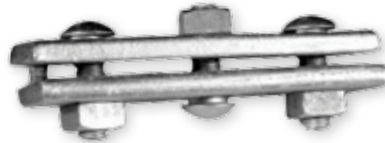
Ground Wire Clamp is used to attach ground or static wires to bayonets. The Ground Wire Clamp is 1/2" J-Bolt which fits into two holes at top of bayonet.



Hubbell Power Systems	MacLean Power Systems	Bayonet Hole Spacing (in.)
5450	N/A	15/16

GUY

Parallel grooves trap strand tightly without marring. Plate halves align evenly for easy application. Each bolt has a shoulder to prevent turning while tightening.



5/8" CLAMP BOLTS

Hubbell Power Systems	MacLean Power Systems	No. of Bolts	Dimensions (in.)		
			Length	Width	Accepts Strand Size
6460	N/A	3	6	2 1/8	3/8 thru 5/8
6461	J931	3	6	1 21/32	5/16 thru 1/2
6462	N/A	2	4	1 21/32	5/16 thru 1/2

1/2" CLAMP BOLTS

Hubbell Power Systems	MacLean Power Systems	No. of Bolts	Dimensions (in.)		
			Length	Width	Accepts Strand Size
6448	J1030	2	3 3/8	1 9/16	1/4 thru 7/16
6449	J929	3	4	1 9/16	1/4 thru 7/16
6450	J930	3	6	1 9/16	1/4 thru 7/16

GUY OFFSET

This two-bolt guy clamp with curved clamping member provides a more positive hold on the guy strand. Available with 1/2" or 5/8" bolts.



Hubbell Power Systems	MacLean Power Systems	Dimensions (in.)		
		Length	Width	Strand Size
6409	J926	3 1/4	1 1/2	3/16 thru 5/16
6410	J927	4	1 5/8	5/16 thru 1/2

CLAMPS

LASHING WIRE

TYPE E

Clamp is fitted with a special clamp bolt formed with a shoulder to prevent turning while tightening. Both ends of the 1/4" bolt are peened to prevent loss of nuts during shipment or handling.



Hubbell Power Systems	MacLean Power Systems	Dimensions (in.)		
		Length	Width	Strand Size
9000	N/A	1	1	1/4 thru 7/16

SUSPENSION

Clamps are used with through bolts to support cable at poles. Through bolt also serves as clamping member. One or more nuts and/or washers are used between the pole and clamp for required spacing.



Hubbell Power Systems	MacLean Power Systems	Type	Dimensions (in.)		Accommodates Strand Size
			Length	Center Hole Diameter	
7901	J1095	1-Bolt Straight Suspension	2 1/2	11/16	1/4 thru 7/16
7902L	J7910A	3-Bolt Angle Suspension	7	11/16	1/4 thru 7/16
7902R	J7901	3-Bolt Angle Suspension	7	13/16	1/4 thru 7/16
7903	J1096	3-Bolt Straight Suspension	5 5/8	11/16	1/4 thru 7/16
7903L	J25088.1	3-Bolt Straight Suspension	5 5/8	11/16	1/4 thru 7/16
7904	RCEL-68-1125	3-Bolt Straight Suspension	5 5/8	13/16	5/16 thru 3/8

CLEVIS

DEADENDING

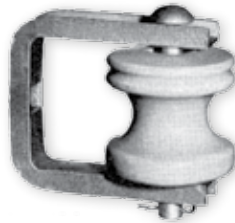
Used for attaching deadend insulators and guys with extension links. Clevises have 5/8" cotter bolts.



Hubbell Power Systems	MacLean Power Systems	Dimensions (in.)			
		Extension	Mounting Hole Diameter	Throat Clearance	Steel Size
455	J455	3 3/4	13/16	5/8	5/8

INSULATORS

Hubbell Power Systems	MacLean Power Systems
468	J093
469	J93
0340	J0342
0341	J0313
0352	J0322
0322	J1395
0337	J1399
0327	J1300
0344	J0344
C2070024	J251



468/J093



469/J93



0340/J0342



0341/J0313



0322/J1395



0337/J1399



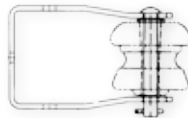
0344/J0344



C2070024/J251

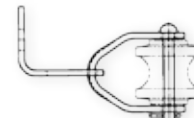
CROSS MOUNTING BRACKET

For attachment over crossarm with a 1/2" carriage bolt installed vertically through the arm, or a 3/8" lag screw.



Hubbell Power Systems	MacLean Power Systems
8795	N/A

SWINGING CLEVIS INSULATED (LESS INSULATORS)



Hubbell Power Systems	MacLean Power Systems
1948M	J1626
1948C	J1614

THIMBLE STANDARD

Combines a steel-attachment clevis with a wire-rope thimble. Thimble has 2" diameter wire groove for deadending strand and swings free for flexibility.



Hubbell Power Systems	MacLean Power Systems	Dimensions (in.)	
		Steel Gauge	Cotter Bolt Diameter
573	J575	10	5/8

WE ARE YOUR TOTAL UTILITY SOLUTION

www.stateelectric.com

WIRE ROPE GUY WIRE

Body of each clip is galvanized ductile iron designed to fit the strand, which is protected by smooth-rounded contact surfaces. Bolts are made of high-strength steel.



Hubbell Power Systems	MacLean Power Systems	Size of Strand (in.)
6480	J1048	1/4
6481	J1049	5/16
6482	J1050	3/8

STANDARD

Most commonly used for deadending, back-guying, and attaching pole head guys on the threaded ends of crossarm bolts.



Hubbell Power Systems	MacLean Power Systems	Bolt Diameter (in.)
6500	J1091	1/2
6501	J1092	5/8
6502	J1092	5/8
6503	J1093	3/4

THIMBLEYE

For attaching to thru-bolts or threaded end of straight or angle-Thimbleye bolts for straight-away head guys. Drop-forged galvanized steel. Nuts are contoured to minimize bending and kinking of guy strand.



Hubbell Power Systems	MacLean Power Systems	Tapped For (in.)
6510	J6510	5/8 Bolt
6511	J6511	3/4 Bolt

TWINEYE

Used for head or stub guying of two strands, Twineye Nuts can be attached to thru-bolts or threaded end of straight or angle Thimbleye bolts. Grooves are contoured to protect guy strands.



Hubbell Power Systems	MacLean Power Systems	Tapped For (in.)
6560	J6515	5/8 Bolt
6561	J6516	3/4 Bolt
6562	J16562	1 Bolt and PISA

ANGLE THIMBLEYE

Used for attaching to thru-bolt or threaded end of straight or angle Thimbleye bolt for down guying. Rounded groove protects guy strand from sharp bending and kinking.



Hubbell Power Systems	MacLean Power Systems	Bolt Diameter (in.)
0100	J6500	5/8
0101	J6501	3/4

THIMBLEYE

Used on ordinary machine bolts for straight-away guys. Rounded groove protects guy strand from sharp kinks and bends.



Hubbell Power Systems	MacLean Power Systems	For Bolt Diameter (in.)
6519	J6550C	5/8
6520	J6551	3/4

GUARDS & STRAPS**CABLE**

Protect telephone and power lines where circuits lead from underground to overhead. Guards are 14-gauge hot dip galvanized steel, formed into "U" shape. Straps are made from hot dip galvanized flat steel, shaped to fit the guards.

GUARDS

Hubbell Power Systems	MacLean Power Systems	Length (ft.)	Inside Diameter (in.)
C2030450	N/A	8	3/4
6531	J985	5	1 1/8
653112	J984	8	1 1/8
6532	J6532	5	2 3/16
6533	J987	8	2 3/16
6534T	N/A	5	3 3/16
6535	J989	8	3 3/16
C2030451	N/A	8	3 11/16

MOUNTING STRAPS

Hubbell Power Systems	MacLean Power Systems	Dimensions (in.)	
		Steel Size	Hole Diameter
6538	J955	1/8 x 3/4	9/32
6539	J996	1/8 x 3/4	9/32
6540	J997	3/16 x 1	11/32
C2030455	N/A	3/32 x 3/4	9/32
C2030456	N/A	3/16 x 1	11/32

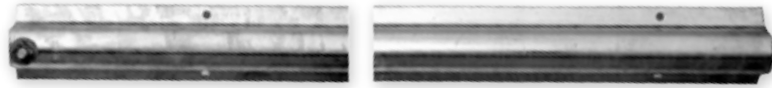


WE ARE YOUR TOTAL UTILITY SOLUTION

www.stateelectric.com

UNDERGROUND CABLE

Flanged one-piece unit is formed of 14 gauge steel. Hot dip galvanized. Extension is flared at one end so that it can be joined to the base section. A carriage bolt fastens the two sections together and also serves as a ground lead attachment point. Mounting holes in 1" wide flanges are located every 25". No straps needed for installation.



CABLE GUARDS

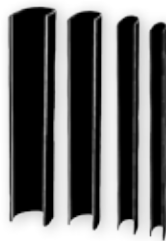
Hubbell Power Systems	MacLean Power Systems	Overall Length (ft.)	Inside Diameter (in.)
C2030033	N/A	9	2
C2030034	N/A	9	3
C2030035	N/A	9	3 1/2

CABLE GUARDS EXTENSIONS

Hubbell Power Systems	MacLean Power Systems	Overall Length (ft.)	Inside Diameter (in.)
C2030036	N/A	5	2
C2030037	N/A	5	3

PLASTIC MOLDING

KOVER-GARD® molding protects surface ground wires, lead wires and conductors. Flame retardant and easy to install. Makes wood or metal molding obsolete.



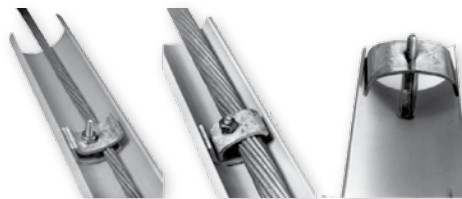
KOVER-GARD MOLDING

Hubbell Power Systems	MacLean Power Systems	Dimensions (in.)				Nominal Size (in.)
		Height	Width	Thickness	Standard Length	
96KG12	PM128	1/2	1/2	1/16	96	1/2
96KG34	N/A	3/4	3/4	1/16	96	3/4
96KG1	N/A	1	1	5/64	96	1
96KG112	N/A	1 1/2	1 1/2	5/64	96	1 1/2

GUY MARKERS

HALF-ROUND MARKERS

Made from an MPO formulation, markers come in yellow only. They resist whitening and have high impact resistance. Markers don't become brittle when cold. They cover completely from the ground up. Markers attach to any 3/16" to 3/4" guy strands. Clamps are located at top, middle and lower end of marker.



Each PBG is furnished with a one-bolt hardware clamp at the lower end to fit all types of guy attachments and two one-bolt strand clamps at the middle that adapts to fit guy wires from 3/16" through 3/4".

Hubbell Power Systems	MacLean Power Systems	Dimensions (in.)	
		Length	Width
84PBG2Y	N/A	84	2
96PBG2Y	N/A	96	2

ECONOMY FULL-ROUND MARKERS

Bright, high visibility markers neither bleach out to white nor crack from cold temperatures. Made of ultraviolet-stabilized high-density polyethylene, overlapping tube-like design offers full-length coverage.



Easy installation requires no tools. Replaceable standard tie strap allows the markers to be reused. Three holes permit the black self-locking nylon strap (furnished) to secure the lower end in a choice of two attachment methods — either above or over the anchor rod, illustrated below. This fastening design eliminates the cutaway section that would weaken its resistance to breaking.

Hubbell Power Systems	MacLean Power Systems	Length (ft.)	Diameter (in.)
96FRPE	N/A	8	1 1/8

FULL-ROUND MARKERS

Increased Visibility

A full 360° of 1.5" diameter high visibility yellow or orange provides increased visibility to children and adults alike. Also available in green or gray for more aesthetically inconspicuous applications. A 2 1/2" diameter marker is also available.

Increased Vandal Resistance

A unique strand trapping design has been added to the security of a concealed pigtail and a self-locking nylon strap. The guy strand passes easily in one direction only . . . into the marker.

Increased Installation

EaseEasy to install; tough to remove. Simply snap the marker over the guy and lock it in place with the self-locking nylon strap and pigtail.

Increase Installation Range

Fit guy strand diameters from 3/16" to 1/2". Increased Ruggedness for Demanding ServiceThe UV stabilized, high impact, high density polyethylene construction has excellent color retention, cold weather properties and no cutaway sections to weaken its strength.

Decreased Costs

Not only will you save time but you'll also save money with these exceptionally affordable guy markers.



FLAME RETARDENT

Hubbell Power Systems	MacLean Power Systems	Dimensions (in.)		
		Length	Diameter	Strand Size
84FRPARYEL	N/A	84	1 1/2	3/16 thru 1/2
96FRPARYEL	J5718	96	1 1/2	3/16 thru 1/2

HANGERS

MESSENGER UNIVERSAL TYPE

Used on corners and straight runs. Messenger is securely clamped by two 1/2" carbon-steel guy clamp bolts. Mounted with a 5/8" thru-bolt and a 1/2" lag screw, neither of which are included.



Hubbell Power Systems	MacLean Power Systems	Dimensions (in.)		
		Steel Size	Extension from Pole	Strand Size
7911	J1070	1/2 x 2	4 1/4	5/16 to 1/2

HOOKS

DRIVE & SCREW

Hooks used to attach wedge type service drops and deadend clamps to crossarms, poles or buildings.



Hubbell Power Systems	MacLean Power Systems	Dimensions (in.)		
		Thread Diameter	Length	Overall Length
C2050190	J3316P	7/16	2 1/2	4 3/4
0317	N/A	3/8	2	4

GUY

Keeps guy wire from creeping downward when pole is guyed sharply. Hooks should be used under bolt heads for maximum shear strength.



Hubbell Power Systems	MacLean Power Systems	Material Size (in.)	Hole Diameter (in.)
5001	N/A	1/4 x 1 1/2 x 7	9/16 x 13/16
5004	N/A	1/4 x 1 1/2 x 4 1/8	11/16
6584	J1019	7/16 x 1 3/4 x 4	11/16

GUY DUCTILE IRON

Will accommodate a maximum guy strand of 9/16" diameter at a 90° angle to the pole. May be used for down guy attachment with excellent load holding capabilities. The guy strand loop may be made up on the ground to simplify installation.



Hubbell Power Systems	MacLean Power Systems	Type
GH6	P133A	2 Bolt
GH61LS	P134AXW	1 Bolt

IRONS

PULLING IN

Provides a strong and easy-to-get-at attachment for the pulling-in blocks when installing or removing cables. Pulling-in irons are set into the brick or concrete walls of street vaults opposite all duct entrances.



Hubbell Power Systems	MacLean Power Systems	Steel Size (in.)
8119	J8119	7/8 Rd.
8120	J8120	7/8 Rd.

LINKS

EXTENSION

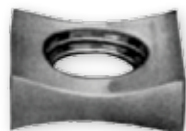
The extension link is used to give additional clearance on deadends and corners. The end clevis has a slotted hole for inserting the machine bolt without having to remove the extension bar.



Hubbell Power Systems	MacLean Power Systems	Hole to Hole Length (in.)	Extension Bar Stock(in.)
C2070065	N/A	20"	5/16 x 1 1/2
C2070112	J6658	14"	1/4 x 2
T2070134	N/A	5.5"	1/4 x 2
DC33B1	J6658	14"	3/16 x 1 1/4
DC33B3	N/A	10"	3/16 x 1 1/4

NUTS

M-F CURVED LOCK NUTS



Hubbell Power Systems	MacLean Power Systems	Bolt Size (in.)
3510	J8581	3/8
3511	J8582	1/2
3512	J8583	5/8
3513	J8584	3/4
3514	J8584-1/2	7/8

WE ARE YOUR TOTAL UTILITY SOLUTION

www.stateelectric.com

WASHER NUTS



Hubbell Power Systems	MacLean Power Systems	Dimensions (in.)		
		Bolt Size	Washer Diameter	Square Size
3194	J9802	5/8	2 1/2	15/16

FOR BOLTS REGULAR SQUARE NUTS



Hubbell Power Systems	MacLean Power Systems	Dimensions (in.)	
		Bolt Size	Threads Per Inch
8600M	J8561	3/8	16
55083P	J8562	1/2	13
55084P	J8563	5/8	11
55085P	J8564	3/4	10
56538P	J8564-1/2	7/8	9
56073P	N/A	1	8

FORGED STEEL

Made with 1" lead thread for 1" pin-type insulators. 1/2" and 5/8" diameter shank pins are furnished with 2" x 2" x 1/8" square washers, and the 3/4" pins with 2 1/4" x 3/16" square washers. These pins come with square nut and curved lock nut. Short shank pins come with spring lock-washer and square nut only.

FOR WOOD CROSSARMS - FLAT-BASE LONG-SHANK TYPE

Hubbell Power Systems	MacLean Power Systems
881	J203
881A	J204
883	J207
884	J206
PS890	N/A
C2060266	N/A
C2060294	N/A

FOR STEEL CROSSARMS - FLAT-BASE SHORT-SHANK TYPE

Hubbell Power Systems	MacLean Power Systems
886	J221
PS887	J222
PS893	N/A

HIGH VOLTAGE FORGED STEEL

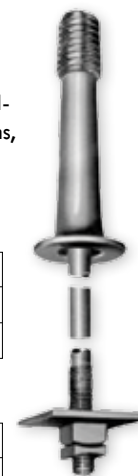
Use with pin-type insulators. Each pin is forged from a single steel piece. Lead threads are free of fins and mold-marks, perfect insulator seating. Made for wood crossarms, the long-shank type pins have a 3" x 3" x 3/16" square washer, square nut, curved locknut.

FOR WOOD CROSSARMS - 1" LEAD THREAD

Hubbell Power Systems	MacLean Power Systems
4705	N/A
4706	J606

FOR WOOD CROSSARMS - 1 3/8" LEAD THREAD

Hubbell Power Systems	MacLean Power Systems
4717	J647
4326	J607A
4328	J608
4332	J610



NYLON THREAD CROSSARM INSULATOR

Nylon threads are an alternative to lead threads on Chance steel insulator pins. These forged steel pins are hot-dip galvanized. Available on 5/8" diameter shanks. Furnished with one each, 2" x 2" x 1/8" square washer, square nut and curved lock nut.



FOR WOOD CROSSARMS - FLAT-BASE LONG-SHANK TYPE

Hubbell Power Systems	MacLean Power Systems
881P	J203Z
881AP	J204Z
883P	J207Z
884P	J206Z

FOR STEEL CROSSARMS - FLAT-BASE SHORT-SHANK TYPE

Hubbell Power Systems	MacLean Power Systems
886P	J221Z
887P	J222Z

CROSSARM CORNER TIP

The crossarm corner pin is made of ductile iron, hot-dip galvanized. It mounts standard 1" thread insulators at an angle 60° from horizontal. Attached to the crossarm by means of a square head bolt which is furnished as part of the pin.



Hubbell Power Systems	MacLean Power Systems	Dimensions (in.)			
		Crossarm Size	Pin Height Above Crossarm	Bolt Size	Thread Size
PS8779	J215	4 x 5 Roofed	5	5/8 x 7	1

CROSSARM TYPE CARRIAGE BOLT

Designed for straight-line, angle or corner construction. Base rests evenly on arms to prevent cutting into crossarm. Lugs prevent twisting. Two 5/8" x 7" carriage bolts, two square nuts, two curved lock nuts and a 5/16" x 11/2" washer-plate are included.



Hubbell Power Systems	MacLean Power Systems	Dimensions (in.)		
		Thread Size	Height Above Crossarm	Crossarm Size
14322	J3322	1	5 3/4	3 3/4 x 4 3/4
143221	J3324	1 3/8	6 3/4	3 3/4 x 4 3/4

THIMBLE ADAPTER

Designed for insulator clearance when used on bolt ends. Seat firmly against the crossarm. Popular for rural line construction. Made of 1" x 12-gauge hot dip galvanized flat steel. A heavy American standard 5/8" nut is crimped to thimble bottom. Lead thread takes 1" standard pin insulators.

Hubbell Power Systems	MacLean Power Systems	Dimensions (in.)		
		Machine Bolt Diameter	Max. Stud Length	Overall Length
4258	J2840	5/8	3	5 1/4

LAG SCREW TYPE

Pins have sharp gimlet-point threads and are used primarily for pole and transformer wiring. Forged steel, hot dip galvanized with 1" cast lead thread.



Hubbell Power Systems	MacLean Power Systems	Dimensions (in.)		
		Shank Diameter	Base Diameter	Overall Length
875	J025Z	1/2	1 3/4	9
PS888	N/A	5/8	2	8

POLE TOP

Pins have sharp gimlet-point threads and are used primarily for pole and transformer wiring. Forged steel, hot dip galvanized with 1" cast lead thread.



NYLON THREAD POLE TOP INSULATOR

When no A dimension is given, the pin has two mounting holes only.



STRAIGHT BASE PINS - 1" THREADS

Hubbell Power Systems	MacLean Power Systems
2162	D2162
2170	J1368
C2060106	N/A
C2060227	N/A
2199	J740
2174	J1220Z
2171	N/A
21971	J744
C2060140	J7442

Hubbell Power Systems	MacLean Power Systems
2162P	J715Z
2170P	J13682
C2060106P	N/A
2199P	J740Z
2174P	J1220Z
2171P	N/A
21971P	N/A
C2060140P	J7442

STRAIGHT BASE PINS - 1 3/8" THREADS

Hubbell Power Systems	MacLean Power Systems
2195	J720
2196	N/A

OFFSET BASE PINS - 1 3/8" THREADS

Hubbell Power Systems	MacLean Power Systems
C2060271	J25179

DOUBLE ARMING CENTER-SUSPENSION TYPE

Attached to the crossarm through the slots provided. Suspension attachment is made through center hole.



Hubbell Power Systems	MacLean Power Systems	Dimensions (in.)	
		Steel Size	Overall Length
5819	J1607	1/4 x 4	17

DOUBLE ARMING FOR CLEVIS CONNECTIONS

Used with forged steel insulator pins or suspension type insulators on wood or steel crossarms. Used with clevises having 3/4" or smaller bolts.



Hubbell Power Systems	MacLean Power Systems	Dimensions (in.)	
		Steel Size	Overall Length
5844	J1528	1/2 x 4	24

LIFT & LOAD

Used to protect poles on heavy down guying when Thimbleye, Angle- Thimbleye or Oval-Eye bolts are used through the pole.



Hubbell Power Systems	MacLean Power Systems	Hole Size (in.)		Plate Size (in.)
		Top	Bottom	
PS7887	N/A	9/16	3/4 x 1	3/16 x 2 1/2 x 7
7888	J7890	9/16	7/8 x 1	1/4 x 2 1/2 x 7
7897	J7886	9/16	3/4 x 1	3/16 x 2 1/2 x 7
7898	J7890	9/16	7/8 x 1	1/4 x 2 1/2 x 7

STRAIN

Strain Plates are used to prevent pole from being damaged by guy wire. Nail holes at corners are 3/16" diameter.



Hubbell Power Systems	MacLean Power Systems	Dimensions (in.)
6575	J1034	4 x 8 x 14 Ga.

SECONDARY MEDIUM & HEAVY TYPES

These racks have fabricated steel points that are permanently welded to the rack bases. Insulators are not included.



MEDIUM TYPE, EXTENDED BACK, 12 GAUGE

Hubbell Power Systems	MacLean Power Systems	No. of Wires	Dimensions (in.)		
			End Mtg. Hole Spacing	Overall Length, Back	Width of Back
C2070049	J767	2	16	18	2 7/8
C2070047	J768	3	24	26	2 7/8
C2070048	J769	4	32	34	2 7/8

MEDIUM TYPE, NONEXTENDED BACK, 9 GAUGE

Hubbell Power Systems	MacLean Power Systems	No. of Wires	Dimensions (in.)		
			End Mtg. Hole Spacing	Overall Length, Back	Width of Back
C2070050	N/A	3	16	21 3/4	3 1/4
C2070051	N/A	4	24	29 3/4	3 1/4

MEDIUM TYPE, NONEXTENDED BACK, 9 GAUGE

Hubbell Power Systems	MacLean Power Systems	No. of Wires	Dimensions (in.)		
			End Mtg. Hole Spacing	Overall Length, Back	Width of Back
C2070052	J768	3	24	26	3 1/4

UNDERGROUND CABLE HEAVY CHANNEL STEEL TYPE

Made from 4" x 119/32" x 3/16" channel steel. Hot dip galvanized. Either expansion or anchor bolts can be used to mount them to the vault wall. Pressed-steel hooks have stops to keep insulators from sliding off.

CABLE RACKS

Hubbell Power Systems	MacLean Power Systems	Dimensions (in.)			
		No. of Slots	Hook Slot Spacing	Overall Length	Mounting Hole Spacing
R1473	N/A	3	8	24	16
R1474	N/A	4	8	32	24
R1476	N/A	6	8	48	40
C2030047	N/A	6	8	48	22 3/8 & 40

CABLE RACKS HOOKS

Hubbell Power Systems	MacLean Power Systems	No. of Insulators Accommodated	Dimensions (in.)		
			Extension from Face of Rack	Overall Length	Steel Size
1292	N/A	2	10 1/4	12	12 Ga.
1293	N/A	3	16 5/8	18	12 Ga.

CABLE RACK INSULATOR (WHITE GLAZE)

Hubbell Power Systems	MacLean Power Systems	Dimensions (in.)		
		Radius for Cable	Overall Length	Overall Width
1115	N/A	2 5/8	4 1/2	2 5/8

UNDERGROUND CABLE

Vertical pinning of successive racks is permitted by an offset at each rack end. Racks are made of 2 1/4" x 2 1/4" x 1/4" steel T-section. Mounting holes and slot for fastening to manhole walls are designed to be used with or without insulators. Hooks supplied with 3/8" x 1 1/2" cotter bolt and key, also available with plastisol coatings applied after galvanizing.

CABLE RACK SUPPORTS

Supports extend cable rack away from wall in order to avoid obstructions, escape water seepage, or because of limited space. Mounting holes take 1/2" bolts. Two supports required to mount each rack.



Hubbell Power Systems	MacLean Power Systems	Dimensions (in.)	
		Mounting Hole Size	Steel Size
1101	J5116	9/16	1/2 x 1
1102	J5115	9/16	1/2 x 1 1/4

GROUND GALVANIZED

Ground Rods are available with or without copper wire. Made of high carbon, open-hearth steel for maximum strength. Does not bend when driven into hard soils. The electro-brazed pigtail is No. 6 tinned copper on 5/8" and 3/4" rod. Bolt-Type Drive Head Ground Rods have surfaces of head and integral clamp finned. Non-ferrous bolt with lockwasher accommodates No. 3 to No. 8 stranded wire.



Hubbell Power Systems	MacLean Power Systems	Diameter (in.)	Length (ft.)
8565	J5315	1/2	5
8566	J5316	1/2	6
8576	J5326	5/8	6
8578	J5328	5/8	8
8580	J5330	5/8	10
8618	J5338	3/4	8
8620	J5340	3/4	10

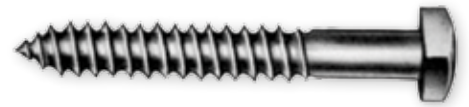
SCREWS

LAG

Lag Screws of 1/4", 3/8" and 1/2" diameter have upset shoulders.

GIMLET POINT TYPE

Hubbell Power Systems	MacLean Power Systems	Dimensions (in.)	
		Diameter	Length
872112GP	J8721-1/2	1/4	1 1/2
8722GP	J8722	1/4	2
872212GP	J8722-1/2	1/4	2 1/2
DF1L3	J8723	1/4	3
DF3L3	J8773	3/8	3



FETTER DRIVE PILOT POINT

Hubbell Power Systems	MacLean Power Systems	Dimensions (in.)	
		Diameter	Length
508743	J8743P	3/8	3
508744	J8744	3/8	4
508753	J8753P	1/2	3
508754	J8754	1/2	4
508754 1/2	J8754-1/2P	1/2	4 1/2
508755	J8755P	1/2	5

TWIST-DRIVE PILOT POINT

Hubbell Power Systems	MacLean Power Systems	Dimensions (in.)	
		Diameter	Length
508500	J8754TP	1/2	4

SHACKLES

ANCHOR

Used principally for attaching suspension-insulator units to the pole. Drop forged. RUS Load Rating: 20,000 lbs.



Hubbell Power Systems	MacLean Power Systems
5801	J2742

UTILITY

SIDEWALK GUY FITTINGS

These fittings are used along sidewalks or near buildings where space is not available for standard guying.

Hubbell Power Systems	MacLean Power Systems	Pipe Size (in.)
0501	SWGB2054	2
0502	SWG205	2
0512	J1502	2



WE ARE YOUR TOTAL UTILITY SOLUTION

www.stateelectric.com

SLEEVES

SERVING

For holding down the loose end of guy strand projecting beyond the guy clamp. Chance Serving Sleeves, which have a flared end to speed application, are faster to apply than wire-wrap sleeves.



Hubbell Power Systems	MacLean Power Systems	Strand Size (in.)	Overall Length (in.)
6452	J5600	1/4	1 3/8
6453	N/A	5/16	1 1/2
6454	J5602	3/8	1 3/4
6455	J5603	7/16	2
6456	J5604	1/2	2 1/4

SPACERS

PIPE

Hubbell Power Systems	MacLean Power Systems	Length Size (in.)	Pipe Size (in.)
2237	J2031	1 1/2	3/4 I.D.



STEPS

POLE

Steps are made from hot-rolled open-hearth steel. Standard Drive Hook type has fetter drive thread and pilot point for easy starting.



Hubbell Power Systems	MacLean Power Systems	Type Head	Size (in.)
506125	J1118	Hook	5/8 x 10

POLE DETACHABLE TYPE

Steps make a neat appearance and deter unauthorized pole climbing. Installed by placing plate over lag until plate cuts into pole. Nail driven into bottom hole gives extra rigidity. Step fits on lag head. Order lags and steps separately.



POLE LADDER-RUNG TYPE, DETACHABLE

Detachable Rung used on metal poles.

Hubbell Power Systems	MacLean Power Systems
FT70025	N/A

WOOD POLE

Hubbell Power Systems	MacLean Power Systems
PS6235	J6235
PS6236	J6236

METAL POLE

Hubbell Power Systems	MacLean Power Systems
T2050425	N/A
T2050426	N/A

POLE LADDER-RUNG TYPE, DETACHABLE

Detachable Rung used on metal poles.

Hubbell Power Systems	MacLean Power Systems
J600007	N/A



WE ARE YOUR TOTAL UTILITY SOLUTION

www.stateelectric.com

STRAPS

REINFORCING

Used as additional support in attaching cable suspension clamps to pole for heavy loads.

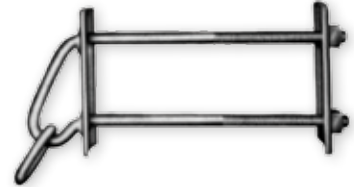


Hubbell Power Systems	MacLean Power Systems
7905	J7905

SUPPORTS

STATIC WIRE

Designed to carry static wires. Load plate is welded to the rods, while the back plate can be adjusted to fit the pole. Includes 1/2" link for wire-clamp attachment.



Hubbell Power Systems	MacLean Power Systems	Dimensions (in.)	
		For Pole Diameter	Steel Size
5432	J6394	8 to 10	5/8
5433	J6395	10 to 12	5/8
5434	N/A	12 to 14	5/8

THIMBLES

GUY WIRE

Chance Guy-Wire Thimbles are primarily used with Ovaley eye anchor rods and bolts. Grooved to fit various strand sizes, they are made from crescent-shaped stock to prevent abrupt, strand-weakening kinks. Open end for slipping over rod or eye.



Hubbell Power Systems	MacLean Power Systems	Dimensions (in.)	
		Strand Size	Guy Rod Clearance
6593	J1057	3/8	1/2 and 5/8
6594	J1058	1/2	5/8 and 3/4
6595	J1059	5/8	1

TONGUES

DEADEND

This forged steel deadend tongue may be used with virtually all strain insulator clevises and clevis type suspension insulators.



Hubbell Power Systems	MacLean Power Systems	Dimensions (in.)		
		Length	Hole Diameter	Steel Size
C2030385	J515	5	1 x 2	3/8

WE ARE YOUR TOTAL UTILITY SOLUTION

www.stateelectric.com

WASHERS

GALVANIZED

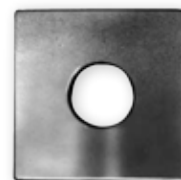
SQUARE CURVED WASHERS

Hubbell Power Systems	MacLean Power Systems	Dimensions (in.)		
		Washer Size	Hole Diameter	Bolt Diameter
680912	J6829	4 x 4 x 1/4	15/16	7/8
681012	J6821	2 1/4 x 2 1/4 x 3/16	11/16	5/8
PS6822	J6822	2 1/2 x 2 1/2 x 3/16	11/16	5/8
682212	J6823	3 x 3 x 1/4	13/16	3/4
6823	J6823	3 x 3 x 1/4	7/8	3/4
682312	J1132	3 x 3 x 1/4	11/16	5/8
6825	J133	3 1/4 x 3 1/4 x 1/4	13/16	3/4
DF4W15	N/A	4 x 4 x 3/16	13/16	3/4



SQUARE WASHERS

Hubbell Power Systems	MacLean Power Systems	Dimensions (in.)		
		Washer Size	Hole Diameter	Bolt Diameter
6811	J1073	2 x 2 x 1/8	9/16	1/2
6812	J1074	2 x 2 x 1/8	11/16	5/8
6813	J1075	2 1/4 x 2 1/4 x 3/16	11/16	5/8
6814	J1076	2 1/4 x 2 1/4 x 3/16	13/16	3/4
6816	J1078	3 x 3 x 3/16	13/16	3/4
6817	J1079	3 x 3 x 1/4	13/16	3/4
6818	J1080	4 x 4 x 3/16	13/16	3/4
681812	J1082	4 x 4 x 1/4	7/8	3/4
6819	J1082	4 x 4 x 1/4	15/16	7/8
681912	J1473	4 x 4 x 1/2	13/16	3/4
6820	J1081	4 x 4 x 1/2	11/8	1



ROUND WASHERS

Hubbell Power Systems	MacLean Power Systems	Dimensions (in.)		
		Washer Size	Hole Diameter	Bolt Diameter
PS6801	N/A	1 O.D. x 14 Ga.	7/16	3/8
PS6802	N/A	1 1/4 O.D. x 14 Ga.	9/16	3/8
PS6803	N/A	1 3/8 O.D. x 12 Ga.	9/16	1/2
6805	J1088	1 3/4 O.D. x 10 Ga.	11/16	5/8
6806	J1089	2 O.D. x 9 Ga.	13/16	3/4



WIREHOLDERS

REINFORCED

Single-point wireholders are strong and compact. Heavy cup-base and strap is a single steel stamping, to which the screw is rigidly assembled. Insulator and strap base are assembled with solid-copper rivet.

Hubbell Power Systems	MacLean Power Systems	Screw or Bolt Size (in.)
31144	J089Z	No. 22 x 2 1/4 Galv. Wood Screw
31145	J0893Z	No. 22 x 3 Galv. Wood Screw
31146	J0894Z	No. 22 x 4 Galv. Wood Screw



WE ARE YOUR TOTAL UTILITY SOLUTION

www.stateelectric.com

UNIVERSAL SERVICE TYPE

These two pipe mounting wireholders will together accommodate a range of pipe sizes from 1 1/4" to 4". Heavy cup-base and strap is a single steel stamping, to which clamp is rigidly assembled. Insulator and strap-base are assembled with a solid-copper rivet. Two carriage bolts are wedged rigidly into the wireholder base on both models.



Hubbell Power Systems	MacLean Power Systems	Pipe Size (in.)	Wire Hole (in.)
C2070075	J0588Z	1 1/4, 1 1/2, 2, 2 1/2	1 Diameter
C2070076	N/A	3, 3 1/2, 4	1 Diameter

Hubbell Power Systems	MacLean Power Systems	Screw or Bolt Size (in.)
0623	J089Z	No. 22 x 2 1/4 Galv. Wood Screw
0607	J089Z	No. 22 x 2 1/4 Galv. Wood Screw
0618	N/A	No. 14 x 1 1/2 Cadmiumplated Wood Screw

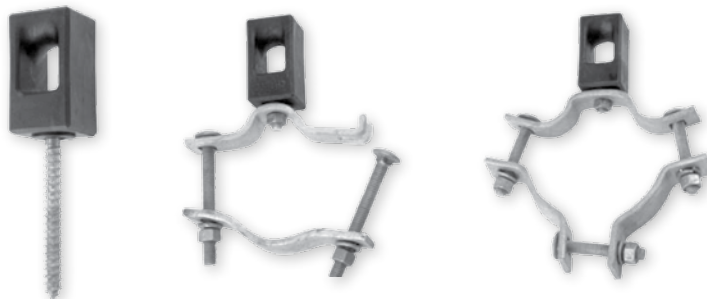
CLEVIS-TYPE

For use with triplex-type service cable, the No. 0192/J075 Clevis takes one NEMA 53-2 spool insulator. Insulators must be ordered separately.



Hubbell Power Systems	MacLean Power Systems	For Insulators	Dimensions (in.)	
			Mounting Screw Size	Steel Size
0192	J075	NEMA 53-2	No. 24 x 3 1/2	3/16 x 1 1/2

The Chance nylon alloy wireholder is offered as a direct replacement for porcelain wireholders. It has greatly increased fracture resistance, comparable insulation and increased ease of installation. The flat top will let you start lag-screw wireholders using a hammer. Universal installing tool is available for powered installations.



For an introductory period, each box will have two installation tools included with lag-screw wireholders. Installation tool is durable for reusability.

SCREW-TYPE

Hubbell Power Systems	MacLean Power Systems	Screw Diameter (in.)
C2070138	J089Z	5/16 Lag
C2070139	J0893Z	5/16 Lag
C2070140	J0894Z	5/16 Lag
C2070143	N/A	Tool

TOGGLE-BOLT

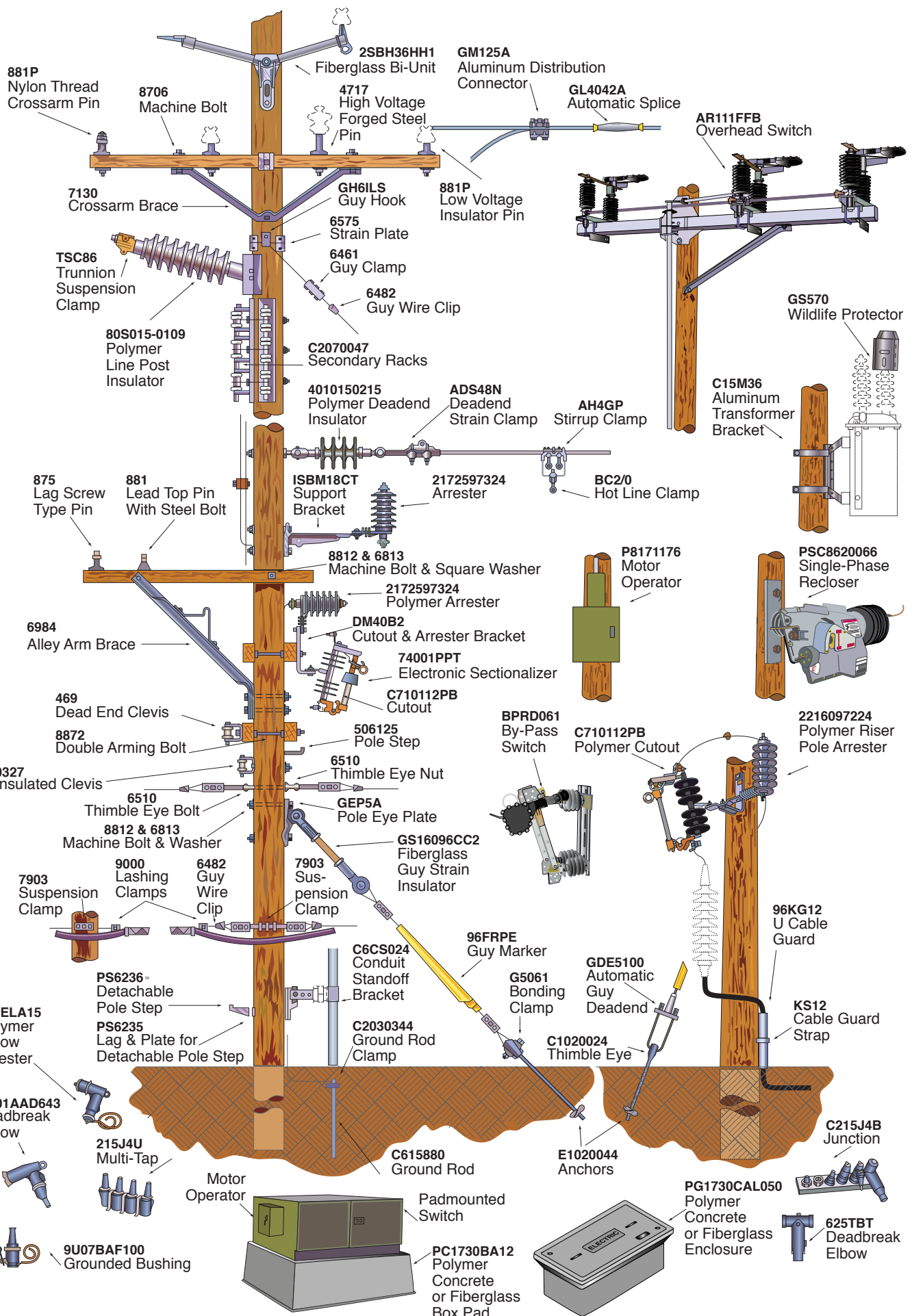
Hubbell Power Systems	MacLean Power Systems	Screw Diameter (in.)
C2070141	N/A	5/16 UNC-2A

CLAMP-TYPE

Hubbell Power Systems	MacLean Power Systems	Pipe Size (in.)
C2070144	J0588Z	1 1/4 - 2 1/2
C2070145	N/A	3 - 4

WE ARE YOUR TOTAL UTILITY SOLUTION

www.stateelectric.com



UTILITY

WE ARE YOUR TOTAL UTILITY SOLUTION

www.stateelectric.com

alley-arm-a side arm brace used when cross-arm is not balanced on both sides of pole but extending out on one side only.

alligator-a tie stick.

A.R.-abbreviation for automatic recloser.

baker board-platform board.

baloney-cable.

baloney bender-a wireman who works with heavy cable.

banjo-a shovel, straight blade and long handle.

bear grease-Z.L.N. electric contact aid.

becky-a cable sling.

bell-suspension or deadend insulators.

bell wrench-wrench for tightening various square head bolts.

bender-hammer.

bible-the electrician's code book.

bicycle-a chain drill for boring holes.

boatswain's chair-a small wooden seat supported by four ropes secured to a ring or tied at a common point above the workman's head.

booger wire - a neutral wire.

bookie tool-a staple puller.

bookie wheel-a measuring device.

boomer-1) a lineman who leaves one job to get to the next job. 2) a lineman who always worked on the installation of new transmission lines.

booties-meter clip insulators.

bottles-glass insulators.

box-1) porcelain enclosed type cutout. **box**-2) padmounted transformer or switchgear.

broomsticks - phase spacers, used to keep phases from coming into contact with each other at midspan.

back-to lower or attempt to lower the voltage.

buck arm-two sets of crossarms at 90 degree angles to each other.

bucket truck-an aerial lift truck for raising men high enough to work on lines from the insulated bucket of the truck.

bug-transformer (Northwest U.S. term)

bugs-solderless, usually bolted, connectors.

bug wrench-speed wrench (Fargo box ratchet type) to install bolted connectors ("bugs").

bulldog-a "come-a-long" wire grip for holding conductor or strand under tension.

bulldog wrench-an alligator wrench.

bullhorn-Epoxyrod bi-unit.

bull line-heavy line for pulling in wires.

bull pen-where the construction crew gathers before and after work.

bull wheel-a reel device used to hold tension on a transmission conductor during stringing operations.

bundle-multiple strings of conductor.

bust anchor-expanding anchor.

buster-expanding and tamping bar used on expanding anchors.

butterfly-conductor take-up reel.

can-an overhead transformer.

candlestick-fiberglass downlead bracket.

can grabbers-channel lock pliers

cat head-capstan hoist.

cattle guard-a plastic or metal guy guard.

cheaters-channel lock pliers.

cherry picker-bucket truck.

chicken catcher-armsling

chicken tracks-Epoxyrod tri-unit

chicken wing-steel post insulator standoff for distribution construction.

chili bowl-an oversized pin-type insulator.

choker-a nylon sling.

christmas tree-pole mounted auxiliary arm used for lifting conductors.

CLF-abbreviation for current limiting fuse.

climbers-hooks for climbing poles.

clum some-a greenhorn lineman, apprentice, helper.

coffin hoist-a chain hoist of any type.

cold-a de-energized line

come-a-long-wire grip for holding conductor or strand under tension. Also spelled *cuma-long*.

corn cob-thimble adapter pin.

coming up easy-pick up load or increase tension.

croby clip-wire rope guy wire clip.

crow's foot-Epoxyrod tri-unit.

C.S.P.-completely self-protected transformer.

C.S.T.-customer subsurface transformer.

C.T.-current transformer, a device used to transfer current from one value to another.

cum-a-long-a wire grip for holding conductor or strand under tension. Also spelled *cumea-long*.

d.a. bolt-double arming bolt.

dead man-1) wood pole, with U-bracket fitting for setting poles by hand without a truck. 2) short wood pole section, buried as an anchor. 3) any kind of earth anchor.

diaper-1) rubber blanket pinned on overhead construction; 2) Seal-A-Conn covering connector.

digging bar-long, round steel bar with 2-in. chisel on one end; ("idiot stick").

dig pole-a transition pole for going from over head to underground distribution.

disc-suspension or deadend insulator.

diving board-a platform board.

DOCO-drop-out cutout; open type cutout.

dog bone-1) special EHV yoke plates, so-called due to their shape; 2) vibration damper.

door-1) the fuse tube on open type cutouts. 2) actual door on enclosed type cutouts.

drifter-a lineman who wants to see the world.

eagle-eye-leveling crossarms by sight with no measuring instruments.

eels-line hose, temporary cover-up.

egg breaker-a guy strain insulator.

egg sucker-Grip-All stick, hot line tool.

E.H.V.-extra high voltage.

elephant ear-a high strength strain insulator.

elephant ears-1) the arc chute on certain types of cutouts for extinguishing the arc while breaking load; 2) a triangular bracket.

EPDM-rubber material used in underground elbow and other connectors (ethylene propylene diene modified).

equalizers-a pair of connectors or club when used in a fight.

eyeball-visual determination without the use of instruments.

fish-a glass strain insulator.

flip-cutout-an open link cutout.

float-1) a lineman who would quit in the middle of a job; 2) a conductor that has become untied from an insulator; 3) a conductor, insulator and pin that has separated from the crossarm and is "floating" rather than tied down.

flower pot-universal bushing well, padmount transformer.

finger-line-1/4" line.

four and a quarter-porcelain dead end insulator.

fuzz box-noisy tester.

gate-an open type cutout's fusetube.

gin-temporary lifting device; see pole buddy.

goathead-an angle-iron punch.

goathorns-guy hooks, iron.

goat-skin-tarp for covering unfinished work for the night.

gopher-a "go for this, go for that" helper.

goulash-insulating compound.

grasshopper-see flip-cutout.

ground hog-a lineman's helper.

grunt-a lineman's helper.

gut-5 kV rubber line hose.

gut wrench-cant hook.

guy jack-a chain hoist.

half-power-a lineman working off a jag.

hand-a tie stick.

hard head-a lag screw.

hard line-steel bull line for pulling in wires

headache-1) vocal warning of danger. 2) anything falling from above on pole.

high pot-to apply high potential to electrical machine or equipment, normally done during insulation testing.

hog liver-flat porcelain guy strain insulator.

hood-insulator cover.

hooks-climbers, used for climbing poles.

hookstick-insulated disconnect stick.

hose-rubber or plastic cover up equipment

hot-a live or energized line.

hot arm-extension arm.

hot link-ball and socket link or other types of extension links.

house bracket-a secondary rack.

house knob-a wire holder.

idiot stick-see digging bar.

instant foundation-streetlight foundation.

J hook-drive and screw hook.

jack-a cutout.

jack straps - small (2-in.) blocks for pulling up small wire secondary.

jacobs ladder-a portable rope ladder.

jiffy deadend-non-compression deadend for copper.

jiggler-a glow light, secondary voltage tester.

johnny-ball-guy strain insulator.

joy jelly-silicone compound for elbow terminators.

jugs-horizontal post insulators.

juniper-a slack electrical connection between two points.

juniper holding stick-wire holding stick.

kettle-an overhead transformer.

knife switch-hook stick disconnect.

knuckle buster-an adjustable wrench.

lady slippers-name applied to present day climbers by old-timers.

leg irons-climbers, hooks.

lead head-1) nail; 2) pin with threaded lead top for porcelain insulators.

leroy-generator

lid-hard hat.

limberneck-a groundman.

line gut-conductor cover.

line profile-scaled side view drawing of actual line for engineer's review.

liners-cloth glove liners or for hard hats in the winter.

lobster claw-an adjustable insulator fork.

luff blocks-small set of rope blocks.

mac-mechanical load pick up jumper.

mack clamps-insulated jumper clamps.

meat hook-hand line hook.

mickey mouse key puller-cotter key puller.

milking stool-a yoke used on the end of a structure for supporting hot line tension tools.

moles-underground line crew.

music stand-a hot line tool rack.

narrow back-an inside electrician.

nitros-street light bulbs.

nose bag-canvas tool pouch.

nuffy putty-Seal-A-Conn for covering connectors.

O.C.B.-oil circuit breaker.

old man-an "A" frame transformer gin.

pad-a pad mounted transformer.

P.C.B.-1) power circuit breaker; opens the current under fault or overload condition. 2) polychlorinated biphenyl chemical.

pen and pencil set-digging bar and spoon.

persuader-a hammer.

phase-one (single) conductor.

pickle-fork-two or three prong tie stick.

pickles-wire connectors.

pig-cover ups.

pig livers-special yokes used on EHV lines or dead ends.

pig-tail-spiral disconnect or spiral link stick.

pigtail-the leader or cable on fuselinks.

pineapple-a spool insulator.

pistol-elbow terminator.

pistol grip-elbow terminator.

pizza plate-a fork suspension attachment.

pogo stick-telescoping tools.

pole buddy-a transformer gin.

pole crab-wire tong saddle.

pork chop-a "come-a-long"; wire grip for holding conductor or strand under tension.

pot-1) potential transformer; 2) pole-top transformer.

pole stub-pole reinforcer.

potato hook-fixed prong tie stick.

pothead-1) a point where separate or overhead electrical conductors come together and continue as cable. 2) the termination device used on end of an underground cable.

pouch-a tool bag.

P.T.O.-power take off.

rake-tie stick.

red head jumper-insulated jumper clamp.

red one-an extremely short distance.

reptile-insulating line hose.

ridge pin-pole top pin.

riser pole-a transition pole going from overhead to underground distribution.

rough neck-a trouble chaser.

saddle pin-a crossarm type pin, fits like a saddle.

sav-a-climb-universal fitting for laying lines over crossarms and through trees with a stick.

saw dust machine-a brace and bit or drill.

saw dust pump-a brace and bit, hand drill.

service drop-the conductor between pole and terminal on a building.

sharp shooter-a shovel with long narrow blade for digging holes in ground like clay.

sheaves-any type of rope block.

shoe-fly-a temporary line built to bypass a construction area.

short hook-up-cord and clips for electric drill.

shot gun stick-a Grip-All stick.

single jack-a heavy hammer.

sinker-pin pushed down through crossarm and insulator rests on crossarm.

sister eye-eyebolt or anchor rod eye for guy strand or insulator.

skywire-a ground wire on top of poles and towers to protect the lines from lightning.

slave market-an employment agency's office.

sleeve-a splice.

slip stick-a Grip-All stick.

slug-a solid blade on open type cutouts.

snake-an insulating line hose.

spool bolt-an upset bolt used to support spool insulators.

spoon-a shovel; cup-shaped with long handle.

squeeze on-a compression fitting (connectors).

squeeze wrench-hand compression or cutting wrenches.

squirrel cage-a steel bracket mounted on a pole to support line conductors.

staking-to survey and mark location for each new line pole.

slinger-1) wire from cutout to transformer. 2) a boom extension.

strong arm-a chain or strap hoist for pulling wire.

switch stick-a disconnect stick.

tag line-rope used to tie off line or to control load being lifted.

tag-out-link stick.

tap clamp-a hot line clamp.

three-phase set-three shovels; a spoon, a spade, and a shovel; all three are of different design for different uses.

thumper-underground fault locator.

thru-bolt-a machine bolt.

toilet seat-1) insulator retainer for trolley pole. A fork suspension tool attachment.

tongs-1) usually refer to pole tongs, used for controlling pole when setting 2) insulated wire tongs used for supporting or moving energized conductor. transformer 'bank' - two or three transformers at same location connected to the same circuit.

traveling chain-a movable grounding device.

traveling chair-a fabricated aluminum two-wheel trolley with an attached chain.

traveling ladder-wooden ladder with fiber rollers generally used when work or inspection has to be done on transmission hardware or conductor.

tub-pole type transformer.

tube-cable in conduit.

tupperware-plastic protective cover.

turkey wing-steel post insulator standoff for distribution construction.

two pound-a lineman's hammer.

u-bangi-1.5 kV rubber line hose.

upset bolt-see spool bolt.

URD-underground residential distribution.

walking crab-a lever lift.

waterfall-a triple drum puller.

weatherhead-the top of the conduit that contains the customer service conductors, constructed so it will resist the action of rain, sun, etc.

westerns-also hooks, standard climbers for old-type Western Union.

wire twister-an inside electrician.

widow-a cable grip.

wiggle-a glow light, secondary voltage tester.

wiggle wire-any kind of formed wire used for securing conductors to insulators.

wildcat connection-three-phase four wire delta

wildcat leg-center tap connection on threephase four wire delta

wire bender cutout-an open link cutout.

window pole-a disconnect stick.

Hubbell	page	Hubbell	page	Hubbell	page	Hubbell	page
0100	18	29980	7	6277	5	6942	9
0101	18	29982	7	6278	4	69421	9
0317	21	29984	7	636412	5	6948	9
0322	16	29986	7	637412	5	6953	9
0327	16	29988	7	6409	14	6955	9
0337	16	31144	32	6410	14	6979	8
0340	16	31145	32	6448	14	6984	8
0341	16	31146	32	6449	14	6999	8
0344	16	3194	23	6450	14	7020	9
0352	16	3470	11	6452	30	7026	9
0501	29	3510	22	6453	30	7028	9
0502	29	3511	22	6454	30	7030	9
0512	29	3512	22	6455	30	7032	9
0607	33	3513	22	6456	30	7126	9
0618	33	3514	22	6460	14	7128	9
0623	33	4257	4	6461	14	7130	9
1101	28	4258	25	6462	14	7132	9
1102	28	4326	23	6480	17	7741	8
1115	27	4328	23	6481	17	774112	8
1292	27	4332	23	6482	17	7742	8
1293	27	455	15	6500	17	7743	8
14322	24	468	16	6501	17	7744	8
143221	24	469	16	6502	17	7826	8
15808	6	4705	23	6503	17	7828	8
15810	6	4706	23	6510	17	7830	8
15812	6	4717	23	6511	17	7832	8
15814	6	5001	21	6519	18	7834	8
15828	6	5004	21	6520	18	7888	26
15830	6	5010	8	6531	18	7897	26
15832	6	5012	8	653112	18	7898	26
15834	6	5014	8	6532	18	7901	15
1948C	16	5016	8	6533	18	7902L	15
1948M	16	506125	30	6534T	18	7902R	15
19784	6	508500	29	6535	18	7903	15
19786	6	508500	29	6538	18	7903L	15
19788	6	508743	29	6539	18	7904	15
19790	6	508744	29	6540	18	7905	31
19792	6	508753	29	6560	17	7911	21
2157	11	508754	29	6561	17	7920	4
2162	25	508754 1/2	29	6562	17	7921	4
2162P	25	508755	29	6575	26	7956	14
2170	25	5110T	8	6584	21	8119	22
2170P	25	5112T	8	6593	31	8120	22
2171P	25	5114T	8	6594	31	8205	12
2174	25	5432	31	6595	31	84FRPMRYEL	20
2174P	25	5433	31	6805	32	84PBG2Y	19
2195	25	5434	31	6806	32	8565	28
2196	25	5436	5	680912	32	8566	28
21971	25	5450	14	681012	32	8576	28
21971P	25	5466	5	6811	32	8578	28
2199	25	55083P	23	6812	32	8580	28
2199P	25	55084P	23	6813	32	8600M	23
2237	30	55085P	23	6814	32	8604	7
2357	10	5510	8	6816	32	860412	7
29930	6	5512	8	6817	32	8605	7
29939	7	5514	8	6818	32	860512	7
29943	7	5516	8	681812	32	8618	28
29956	7	56073P	23	6819	32	8620	28
29958	7	5612	8	681912	32	8634	6
29959	7	5614	8	6820	32	8634	6
29960	7	56538P	23	682212	32	863412	6
29962	7	5728	9	6823	32	863412	6
29964	7	573	16	682312	32	8635	6
29966	7	5801	29	6825	32	8635	6
29968	7	5819	26	6940	9	8636	6
29970	7	5844	26	69401	9	8636	6
29978	7	6276	5	6941	9	8637	6

Hubbell	page
8637	6
8645	6
8645	6
864512	6
864512	6
8646	6
8646	6
8647	6
8647	6
870112	7
870412	7
8705	7
8706	7
8707	7
8708	7
8709	7
8710	7
8712	7
8714	7
872112GP	29
872212GP	29
8722GP	29
875	25
8777	6
8795	16
8805	7
8806	7
8807	7
8808	7
8809	7
881	23
8810	7
8812	7
8814	7
8816	7
8818	7
881A	23
881AP	24
881P	24
8820	7
8822	7
8824	7
883	23
883P	24
884	23
8846	6
8848	6
884P	24
886	23
886P	24
887P	24
8908	7
8910	7
8912	7
8914	7
8916	7
8918	7
8920	7
8922	7
8924	7
8926	7
9000	15
9113S	13
9114S	13
9183	12
96FRPE	20
96FRPMRYEL	20

Hubbell	page
96KG1	19
96KG112	19
96KG12	19
96KG34	19
96PBG2Y	19
C2030033	19
C2030034	19
C2030035	19
C2030036	19
C2030037	19
C2030047	27
C2030148	13
C2030183	5
C2030194	5
C2030197	5
C2030200	5
C2030233	9
C2030385	31
C2030450	18
C2030451	18
C2030455	18
C2030456	18
C2050094	6
C2050190	21
C2050254	7
C2050255	7
C2050256	7
C2050257	7
C2050258	7
C2060004	11
C2060009	11
C2060010	11
C2060011	11
C2060106	25
C2060106P	25
C2060127	10
C2060140	25
C2060140P	25
C2060162	12
C2060169	12
C2060189	10
C2060190	10
C2060192	10
C2060193	10
C2060209	12
C2060227	25
C2060236	10
C2060266	23
C2060271	25
C2060280	10
C2060283	10
C2060294	23
C2060299	10
C2060480	9
C2060547	10
C2070024	16
C2070047	27
C2070048	27
C2070049	27
C2070050	27
C2070051	27
C2070052	27
C2070065	22
C2070075	33
C2070076	33
C2070112	22
C2070138	33

Hubbell	page
C2070139	33
C2070140	33
C2070141	33
C2070143	33
C2070144	33
C2070145	33
DC33B1	22
DC33B3	22
DF1L3	29
DF3L3	29
DF4W15	32
DG1F18	8
DG1F8	8
DG4F8	8
FT70025	30
G5060	13
G5061	13
G5063	13
G5063	13
G5065	13
G5067	13
G5068	13
G5069	13
GH6	21
GH6ILS	21
J600007	30
P451016	4
PS2355	10
PS5484	5
PS6235	30
PS6236	30
PS6280	4
PS6366	5
PS6367	5
PS6368	5
PS6376	5
PS6377	5
PS6378	5
PS6801	32
PS6802	32
PS6803	32
PS6822	32
PS7887	26
PS8779	24
PS887	23
PS888	25
PS890	23
PS893	23
R1473	27
R1474	27
R1476	27
T2030367	8
T2030459	9
T2050425	30
T2050426	30
T2060398	9
T2070134	22

MacLean	page
D2162	25
J025Z	25
J0313	16
J0322	16
J0342	16
J0344	16
J0588Z	33
J0588Z	33
J0590	12
J075	33
J0893Z	32
J0893Z	33
J0894Z	32
J0894Z	33
J089Z	32
J089Z	33
J089Z	33
J093	16
J1019	21
J1030	14
J1034	26
J1048	17
J1049	17
J1050	17
J1057	31
J1058	31
J1059	31
J1070	21
J1073	32
J1074	32
J1075	32
J1076	32
J1078	32
J1079	32
J1080	32
J1081	32
J1082	32
J1088	32
J1089	32
J1091	17
J1092	17
J1093	17
J1095	15
J1096	15
J1118	30
J1130	5
J1132	5
J1132	32
J1220Z	25
J1220Z	25
J1300	16
J133	32
J1368	25
J13682	25
J1395	16
J1399	16
J1442	8
J1473	32
J1502	29
J1506	9
J1506	9
J1507	9
J1508	9
J1508	9
J1510	9
J1512	9

MacLean	page	MacLean	page	MacLean	page	MacLean	page
J1514	9	J5604	30	J8053	8	J8808	7
J1522	8	J5718	20	J8054	8	J8809	7
J1525	8	J575	16	J8055	8	J8810	7
J1528	26	J606	23	J8062	8	J8812	7
J1607	26	J607A	23	J8063	8	J8814	7
J1614	16	J608	23	J8119	22	J8816	7
J1626	16	J610	23	J8120	22	J8818	7
J16562	17	J6235	30	J8151	8	J8820	7
J203	23	J6236	30	J8152	8	J8822	7
J2031	30	J6270	5	J8153	8	J8824	7
J203Z	24	J6280	5	J8154	8	J8908	7
J204	23	J6394	31	J8161	8	J8910	7
J204Z	24	J6395	31	J8162	8	J8912	7
J206	23	J647	23	J8163	8	J8914	7
J206Z	24	J6500	18	J8561	23	J8916	7
J207	23	J6501	18	J8562	23	J8930	6
J207Z	24	J6510	17	J8563	23	J9064	7
J215	24	J6511	17	J8564	23	J9066	7
J221	23	J6515	17	J8564-1/2	23	J9068	7
J221Z	24	J6516	17	J8581	22	J9070	7
J222	23	J6532	18	J8582	22	J9072	7
J2342-1/2	8	J6550C	18	J8583	22	J9120	8
J2343-1/2	8	J6551	18	J8584	22	J9134	8
J2344-1/2	8	J6641	5	J8584-1/2	22	J926	14
J2346-1/2	8	J6644	5	J8604	7	J927	14
J2348-1/2	8	J6658	22	J8604-1/2	7	J929	14
J2352	11	J6684	5	J8605	7	J93	16
J2357	10	J6765	13	J8634	6	J930	14
J2394	8	J6765A	13	J8634	6	J931	14
J2396	8	J6821	32	J8634-1/2	6	J9406	7
J2398	8	J6822	32	J8634-1/2	6	J9408	7
J24515	10	J6823	32	J8635	6	J9409	7
J24665	10	J6829	32	J8635	6	J9410	7
J24711	10	J7126	9	J8636	6	J9412	7
J24712	10	J7126	9	J8636	6	J9414	7
J25088.1	15	J7128	9	J8637	6	J9416	7
J251	16	J7128	9	J8637	6	J9418	7
J25179	25	J7130	9	J8645	6	J9420	7
J25256-2	11	J7130	9	J8645-1/2	6	J9508	7
J2584	12	J7132	9	J8646	6	J9510	7
J26190	10	J7132	9	J8647	6	J9512	7
J26714	13	J715Z	25	J8701-1/2	7	J9514	7
J26715	13	J720	25	J8705	7	J9516	7
J26716	13	J740	25	J8706	7	J9518	7
J2742	29	J740Z	25	J8707	7	J9802	23
J2840	25	J744	25	J8708	7	J984	18
J3230	13	J7442	25	J8709	7	J985	18
J3231	13	J744Z	25	J8710	7	J987	18
J3233	13	J767	27	J8712	7	J989	18
J3316P	21	J768	27	J8714	7	J995	18
J3322	24	J769	27	J8721-1/2	29	J996	18
J3324	24	J7808	6	J8722	29	J997	18
J4023	4	J7810	6	J8722-1/2	29	NWB5	11
J455	15	J7812	6	J8723	29	P133A	21
J5115	28	J7814	6	J8743P	29	P134AXW	21
J5116	28	J7886	26	J8743P	29	PM128	19
J515	31	J7890	26	J8744	29	RCEL-68-1125	15
J5315	28	J7890	26	J8753P	29	SPHJB-85-5-30	12
J5316	28	J7901	15	J8754	29	SWG205	29
J5326	28	J7905	31	J8754	29	SWGB2054	29
J5328	28	J7910A	15	J8754-1/2P	29		
J5330	28	J7920	4	J8754TP	29		
J5338	28	J7921	4	J8755P	29		
J5340	28	J7935	9	J8773	29		
J5600	30	J7936	9	J8805	7		
J5602	30	J8051	8	J8806	7		
J5603	30	J8052	8	J8807	7		

LOCATIONS

Corporate

2010 2nd Avenue
P.O. Box 5397
Huntington, WV 25703
Phone: 304.523.7491
Fax: 304.525.8917
Toll Free: 1.800.624.3417

Illinois

1911 W. Rendleman Street
Marion, IL 62959
Phone 618.993.5197
Fax 618.993.5629
Toll Free: 1.877.501.0767

Kentucky

2528 Greenup Avenue
Ashland, KY 41101
Phone: 606.324.8011
Fax: 606.324.5869
Toll Free: 1.800.258.7415

1518 Industrial Park Drive
Maysville, KY 41056
Phone: 606.759.9207
Fax: 606.759.4822
Toll Free: 1.800.394.1760

1420 East Cumberland Avenue
Middlesboro, KY 40965
Phone: 606.248.1730
Fax: 606.248.7347
Toll Free: 1.800.625.5505

122 Johnson Street*
Pikeville, KY 41501
Phone: 606.432.3163
Fax: 606.432.4323
Toll Free: 1.800.443.9044

1121 Central Avenue
South Williamson, KY 41503
Phone: 606.237.7150
Fax: 606.237.7153
Toll Free: 1.888.211.7823

North Carolina

485 Watson Road
Arden, NC 28704
Phone: 828.681.9813
Fax: 828.684.8034
Toll Free: 1.855.231.3283

8065 Chapel Hill Road
Cary, NC 27513
Phone: 919.467.4802
Fax: 919.467.5428
Toll Free: 1.800.280.3467

1100 Concord Parkway North
Concord, NC 28027
Phone: 704.788.3300
Fax: 704.788.2966
Toll Free: 1.800.397.0663

1111 Person Street
Durham, NC 27703
Phone: 919.596.1396
Fax: 919.596.5520
Toll Free: 1.800.280.0253

4101 Raeford Road
Unit 200
Fayetteville, NC 28304
Phone: 910.307.1525
Fax: 910.307.1506

801 South George Street
Goldsboro, NC 27530
Phone: 919.735.1701
Fax: 919.734.2461
Toll Free: 1.800.661.3210

2709 Patterson Street
Greensboro, NC 27407
Phone: 336.855.8200
Fax: 336.855.6681
Toll Free: 1.800.852.6681

1953 Martin Luther King Jr. Blvd.
Kinston, NC 28501
Phone: 252.523.7685
Fax: 252.523.7986
Toll Free: 1.800.280.6260

989 West Pine Street (Hwy. 89)
Mt. Airy, NC 27030
Phone: 336.786.9816
Fax: 336.786.2228
Toll Free: 1.800.522.9816

3925 Tarheel Drive
Raleigh, NC 27609
Phone: 919.821.5320
Fax: 919.833.5776
Toll Free: 1.866.743.7473

815 Julian R. Alsbrook Hwy
Roanoke Rapids, NC 27870
Phone: 252.535.3171
Fax: 252.535.3141
Toll Free: 1.800.280.3999

1415 South Main Street
Salisbury, NC 28144
Phone: 704.633.9131
Fax: 704.633.9158
Toll Free: 1.800.397.0848

2115 W. Front Street
Statesville, NC 28677
Phone: 980.223.8588
Fax: 980.223.8640

1221 National Drive
P.O. Box 5098
Winston-Salem, NC 27103
Phone: 336.723.9656
Fax: 336.777.0588
Toll Free: 1.800.223.9656

Ohio

9 Herrold Avenue
Athens, OH 45701
Phone: 740.594.1177
Fax: 740.594.1166
Toll Free: 1.877.801.0559

1262 Industrial Drive
Chillicothe, OH 45601
Phone: 740.774.1107
Fax: 740.773.5121
Toll Free: 1.800.443.8084

555 Mill Park Drive
Lancaster, OH 43130
Phone: 740.654.0830
Fax: 740.654.4309
Toll Free: 1.800.645.0830

201 Stonecreek Road NW
New Philadelphia, OH 44663
Phone: 330.308.0659
Fax: 330.308.0667
Toll Free: 1.855.298.0492

2045 8th Street
Portsmouth, OH 45662
Phone: 740.354.3141
Fax: 740.354.3143
Toll Free: 1.800.282.4593

Pennsylvania

227 Airport Road
Indiana, PA 15701
Phone: 724.471.2455
Fax: 724.801.8381

Virginia

390 Arbor Drive*
Christiansburg, VA 24073
Phone: 540.382.6415
Fax: 540.381.1520
Toll Free: 1.800.874.7856

348 North Monroe Avenue
Covington, VA 24426
Phone: 540.965.5200
Fax: 540.962.8852

2733 Ayliff Road
Norfolk, VA 23513
Phone: 757.857.0682
Fax: 757.855.2931

1011 Commerce Road
Richmond, VA 23224
Phone: 804.232.8911
Fax: 804.232.0794
Toll Free: 1.800.922.4296

3105 Shenandoah Avenue, NW
Roanoke, VA 24017
Phone: 540.343.3800
Fax: 540.981.2899
Toll Free: 1.877.595.8386

225 North 11th Street
Wytheville, VA 24382
Phone: 276.228.3191
Fax: 276.228.7467

West Virginia

530 Ragland Road*
Beckley, WV 25801
Phone: 304.256.2200
Fax: 304.256.2229
Toll Free: 1.800.642.2762

820 Bluefield Avenue
Bluefield, WV 24701
Phone: 304.327.3464
Fax: 304.325.6610
Toll Free: 1.800.544.6755

890 East Pike Street
Clarksburg, WV 26301
Phone: 304.624.7467
Fax: 304.624.7464
Toll Free: 1.800.642.7467

1223 Charles Avenue
Dunbar, WV 25064
Phone: 304.766.0500
Fax: 304.766.0518
Toll Free: 1.800.642.8642

405 12th Street
Dunbar, WV 25064
Phone: 304.768.3600
Fax: 304.768.3698
Toll Free: 1.800.344.5202

2010 2nd Avenue*
P.O. Box 5397
Huntington, WV 25703
Phone: 304.523.7491
Fax: 304.522.9624
Toll Free: 1.800.624.3417

181 Oak Carriage Lane
Lewisburg, WV 24901
Phone: 304.647.5200
Fax: 304.647.4812
Toll Free: 1.800.624.6080

Rt. 10 South, McConnell Addition
P.O. Box 1286
Logan, WV 25601
Phone: 304.752.3161
Fax: 304.752.5945
Toll Free: 1.800.397.0706

3069 University Avenue
Morgantown, WV 26505
Phone: 304.598.1131
Fax: 304.598.8740
Toll Free: 1.800.258.2454

4601 Camden Avenue*
P.O. Box 1605
Parkersburg, WV 26102
Phone: 304.424.8100
Fax: 304.424.8144
Toll Free: 1.800.642.2630

108 Walnut Street
Princeton, WV 24740
Phone: 304.425.1718
Fax: 304.425.1752

50 East Cove Avenue Ext.
Wheeling, WV 26003
Phone: 304.242.0042
Fax: 304.242.0078

*Lighting Center Locations

WE ARE YOUR TOTAL UTILITY SOLUTION

www.stateelectric.com

WE ARE YOUR TOTAL UTILITY SOLUTION

To Find a Location Nearest You Visit www.stateelectric.com