

Valve Expertise

The broadest portfolio of valves.
The most comprehensive life cycle programs.



Wherever you are, we're there with the products, people, and services you need.

Discover the products, the people, and the services that deliver optimum value for all your valve needs. Across oil and gas disciplines, around the world, we offer the industry's broadest portfolio of valves, the unmatched experience of knowledgeable global valve experts, and a seamless process that integrates industry best practices with comprehensive life-of-field support.



Valves by Type

Through innovative organic development and strategic acquisition, we have built a broad portfolio of ASME/API valves that services the demands of global drilling, production, pipeline, storage, transmission, and critical service applications.



Ball valves

Trunnion mounted, floating, and rising stem. Available in sizes ranging from ¼ to 60 in (6 to 1,500 mm). Engineered for heavy-duty, reduced-maintenance performance, and to provide increased resistance to pipeline pressures, temperatures, and stresses.

- CAMERON*
- GROVE*
- RING-O*
- TBV*
- ORBIT*
- NAVCO*
- TK*
- NUTRON*
- WKM*
- NEWCO*
- AOP*



Gate valves

Trusted where safety and the reliability of sealing are critical. ¼ to 60 in (6 to 1,500 mm) with a range of soft seats and metal-seated options.

- GROVE
- RING-O
- WKM
- DEMCO*



Butterfly valves

Standard, high-performance, and triple offset valves for multiple applications spanning a wide range of industries. Designed for easy installation and simple operation. Available with various combinations of body and disc materials in sizes ranging from 2 to 36 in (50 to 900 mm).

- WKM
- DEMCO



Plug valves

Serving pipelines, liquid bulk terminals, aviation fueling, and refining for oil and gas production and custody transfer. A history of reliability in tough, abrasive, and severe service applications. Available with multiple seating options in sizes ranging from 1 to 42 in (25 to 1,050 mm).

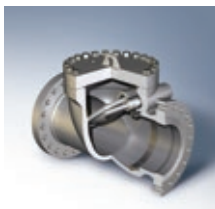
- GENERAL VALVE*
- TEXSTEAM*



Diverter valves

Constructed with highly resilient elastomer seals, designed to offer no-leak stream separation and longer seal life. Available in sizes from 2 to 20 in (50 to 500 mm), they are independent of line or hydraulic pressure, and offer positive sealing for dependable flow in pressurized conveying lines.

- GENERAL VALVE



Check valves

Piston, nozzle, swing, dual-plate, and short pattern. Sizes range from ¼ to 72 in (6 to 1,800 mm) with multiple end connections and seating options.

- TOM WHEATLEY*
- ENTECH*
- TECHNO*
- WHEATLEY*
- AOP*



Downstream gate, globe, and check valves

Used in industrial processing and construction industries for ammonia, chlorine, and category "M" materials. Wide range of downstream gate, globe, and check valves for increased efficiency and reliable operation.

- NEWCO
- DOUGLAS CHERO*

Valve Market Portfolio

	UPSTREAM			MIDSTREAM	DOWNSTREAM	
	Subsea	Drilling	Standard and critical production	Transmission and storage	Processing, refining, and petrochemical	Industrial
MARKET BY BRAND						
CAMERON	●			●		
DEMCO		●				
DOUGLAS CHERO			●		●	●
DOUGLAS ITALIA					●	●
ENTECH				●		
GENERAL VALVE				●		
GROVE	●		●	●		
NAVCO			●			
NEWCO				●	●	●
NUTRON			●	●		
ORBIT			●		●	
RING-O	●					
TBV			●		●	
TECHNO				●		
TEXSTEAM			●			
THORNHILL CRAVER			●			
TK			●			
TOM WHEATLEY	●			●		
WHEATLEY				●		
WKM		●	●	●	●	●
AOP			●			
MARKET BY TYPE						
Trunnion-mounted ball valves	●		●	●		
Floating ball valves			●	●	●	
Rising stem ball valves			●		●	
Instrument connection valves					●	
Triple offset valves				●	●	●
Butterfly valves		●		●		
Gate valves	●	●		●		
Needle and gage valves			●			
Plug valves			●	●		
Check valves	●			●		
Gate, globe, and check valves			●	●	●	●
Choke valves			●			

Valves by Brand

The 20 Cameron manufactured valve brands represent a history of reliability and innovation across a wide range of valve types, including ball valves; gate, globe, and check valves; and butterfly, choke, and plug valves.

CAMERON | Ball valves

Maximized strength with minimum weight requirements, utilizing a compact, spherical design that eliminates body flanges, reducing size and the potential for leak paths.

GROVE | Ball valves, gate valves

Leading the industry in API 6D side-entry, top-entry, and fully welded ball and gate valves for the exploration, production, transportation, refining, and process markets.

ORBIT | Ball valves

Positive shutoff and repeated resealing capability, utilizing design features that protect critical valve components from wear and degradation.

RING-O | Ball valves, gate valves

Engineered specifically for the harshest subsea environments and backed by a commitment to severe service applications.

GENERAL VALVE | Plug valves

Engineered to meet the specific needs of the oilfield and aviation markets. Known for reliable, trusted performance.

WKM | Ball valves, gate valves, butterfly valves

Delivering innovative and trusted solutions to oil and gas and process control applications worldwide for more than seven decades.

DEMCO | Gate valves, butterfly valves

Recognized across the industry for their quality design and rugged dependability, with more than 65 years of expertise in a variety of oilfield applications.

TBV | Ball valves

History of expert engineering and design, with superior capability in exotic alloys and specialty applications, including cryogenic and autoclave mining.



NEWCO | Ball valves, gate valves, globe valves, check valves

Offering a full portfolio of streamlined solutions for downstream applications in a variety of markets.

DOUGLAS CHERO | Gate valves, globe valves, check valves, urea service valves

The Douglas Chero brand complements Cameron NEWCO downstream valves for the Middle East, Europe, Asia, and the US.

NUTRON | Ball valves

Engineered for heavy-duty, reduced-maintenance performance and manufactured in a broad spectrum of body and seal materials.

ENTECH | Check valves

Backed by 140 years of engineering expertise, and reaching a variety of oil and gas and process markets.

TEXSTEAM | Plug valves

Reliability in tough service conditions such as H₂S, CO₂, and abrasive/severe service applications. Specifically designed for corrosion resistance, bubble-tight sealing, and high wear and impact resistance.

TK | Ball valves

Robust design, superior sealing areas, and stainless steel overlays. Widely recognized as a leader in severe service applications.

TECHNO | Check valves

Known for ease of maintenance and exceptional flow characteristics. Economical and dependable multipurpose check valves for use in a wide range of service conditions.

TOM WHEATLEY | Check valves

An integral part of the subsea and surface flow control arenas for single-source solutions in the most critical backflow prevention applications.

WHEATLEY | Check valves

Check valves designed to maximize flow area, minimize pressure loss, and reduce required installation space and time for upstream and downstream markets.

AOP | Ball valves, check valves

Supported by a specialized network of representatives and stocking distributors, supplying the upstream markets with API 6D valves, including gauge and needle valves.



Valves by Market

PETROCHEMICAL & CHEMICAL

We manufacture high-quality valves for the safe transport of potentially dangerous chemicals.



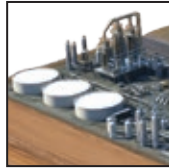
GAS PROCESSING

For high performance and positive sealing, our valves offer dependable, zero-leakage control.



REFINING OIL

Our valves for refining services offers easy installation and reduced-maintenance performance.



LNG

We offer a wide range of proven, flexible products with special design features for all installations.



SUBSEA PRODUCTION

Designed to operate efficiently in deepwater, high-pressure applications, our field-proven valves are available for subsea production.



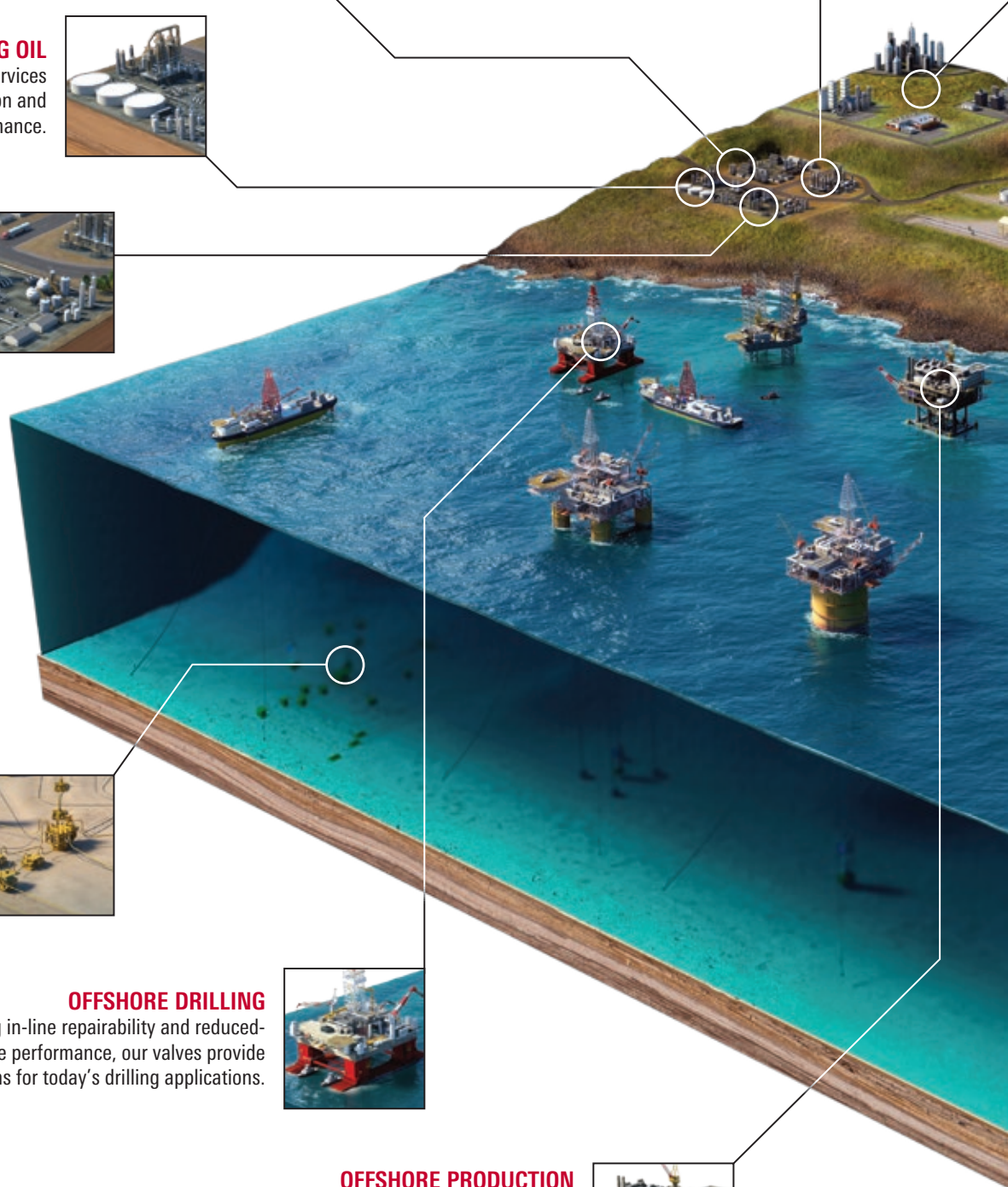
OFFSHORE DRILLING

Featuring in-line repairability and reduced-maintenance performance, our valves provide flexible solutions for today's drilling applications.



OFFSHORE PRODUCTION

For enhanced sealing and long-term reliability, we offer valves featuring beveled self-aligning clappers, compact spherical designs, and an assortment of seating options.





INDUSTRIAL

We offer downstream valve solutions to the power, municipal, and construction industries.



TRANSMISSION & STORAGE

Increasing pipeline safety and performance, we apply advanced valve technology to help ensure maximum efficiency.



ONSHORE DRILLING

Committed to providing safe drilling technology, we provide valves that enhance safety while increasing drilling efficiency.



UNCONVENTIONAL & SHALE

We offer a broad range of rugged, high-quality valves suited for both gas and liquid unconventional applications.



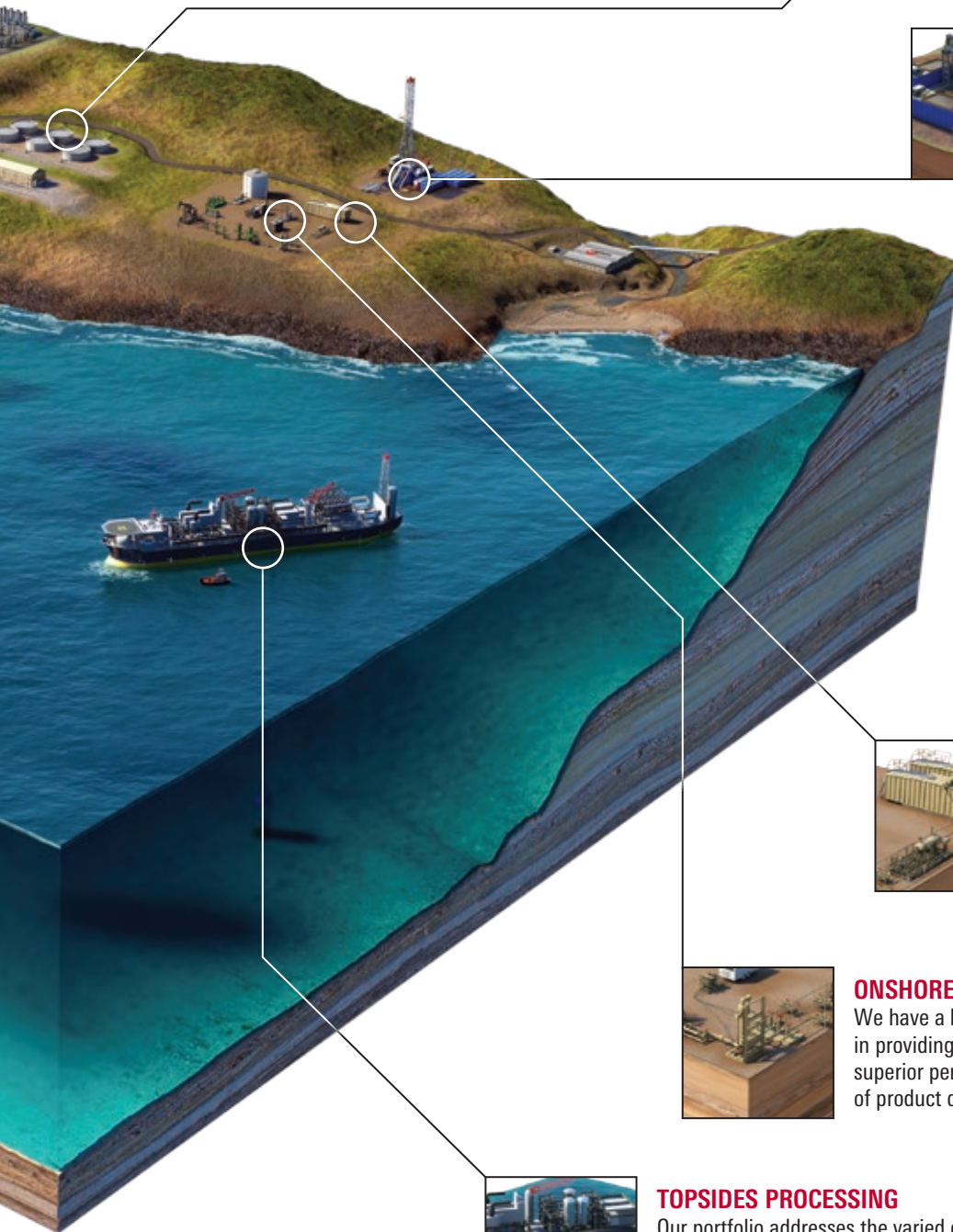
ONSHORE PRODUCTION

We have a long history of dependability in providing workhorse valves that deliver superior performance across a broad range of product demands.



TOPSIDES PROCESSING

Our portfolio addresses the varied demands of topsides processing and delivers technical performance that respects weight and service requirements.



Services for Valves and Automation

24/7 support

Keeping your equipment running at peak performance is key to your success. As the largest service network for valves in the industry, the Cameron services program is right where you need us, ready to respond at a moment's notice, 24 hours a day, seven days a week. In addition to having experience with all sizes, brands, and applications, we provide resources to optimize the life of each product and offer a full range of services, including:

- Spare parts
- Preventive maintenance
- Repair
- Customer property management
- Warranty
- Remanufacturing
- Field service
- Training and recertification

Global responsiveness

With Cameron services, you benefit from a strategically situated network of global service centers supported by trained personnel equipped with the tools and technical capability to service your valves safely and cost-effectively. In addition, we offer the efficiency of an integrated network where intelligence can be shared within and among divisions and across all locations. As such, these integrated systems and processes enable us to provide a fast turnaround and significant value.

OEM expertise

As the original equipment manufacturer (OEM), we know our products better than anyone and can best service them to optimize the life of each valve system. Due to our intimate product knowledge and training, we help customers save time and costs while providing the best service possible.



Total Valve Care

All types. All brands. All manufacturers.

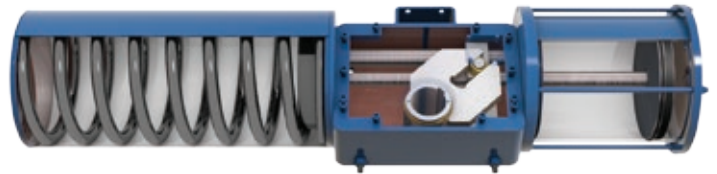
For greater flexibility and improved cost control, Cameron offers Total Valve Care* (TVC) solutions – a complete valve management program designed to optimize uptime, availability, and life-of-field support. TVC provides management support specializing in high-specification project work, existing operations with vast installed bases, and new development opportunities. TVC covers standard and critical valves ideal for extreme environments and remote areas of the world.

Valve Automation

Our valve automation portfolio includes actuation and gear technologies that complement the operational excellence of our manufactured valve brands, as well as third-party valve products.

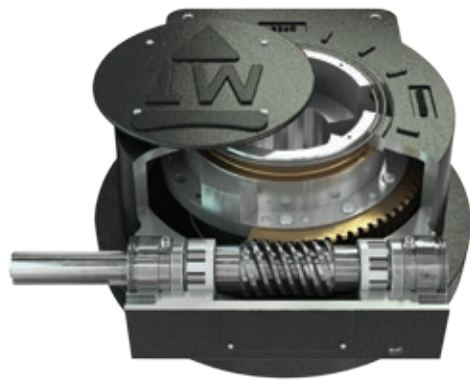
Actuators and control systems

The LEDEEN® brand represents 60 years of industry-leading technology in the design and manufacture of fluid-powered actuators, including both double-acting and spring-return configurations for quarter-turn and linear valves. Consistent and disciplined engineering design supported by efficient modular assembly practices allows for increased operational flexibility and responsive delivery schedules.



High-performance worm gear operators

The patented design of MAXTORQUE® gear delivers high torque capabilities (2,000 to 1,000,000+ ft-lb) and can reduce workload by up to 75%. Coupled with an electric actuator, these gears enable fast close times (<10 seconds). A proprietary, self-locking device works to simplify the open/close process and helps ensure operator safety.

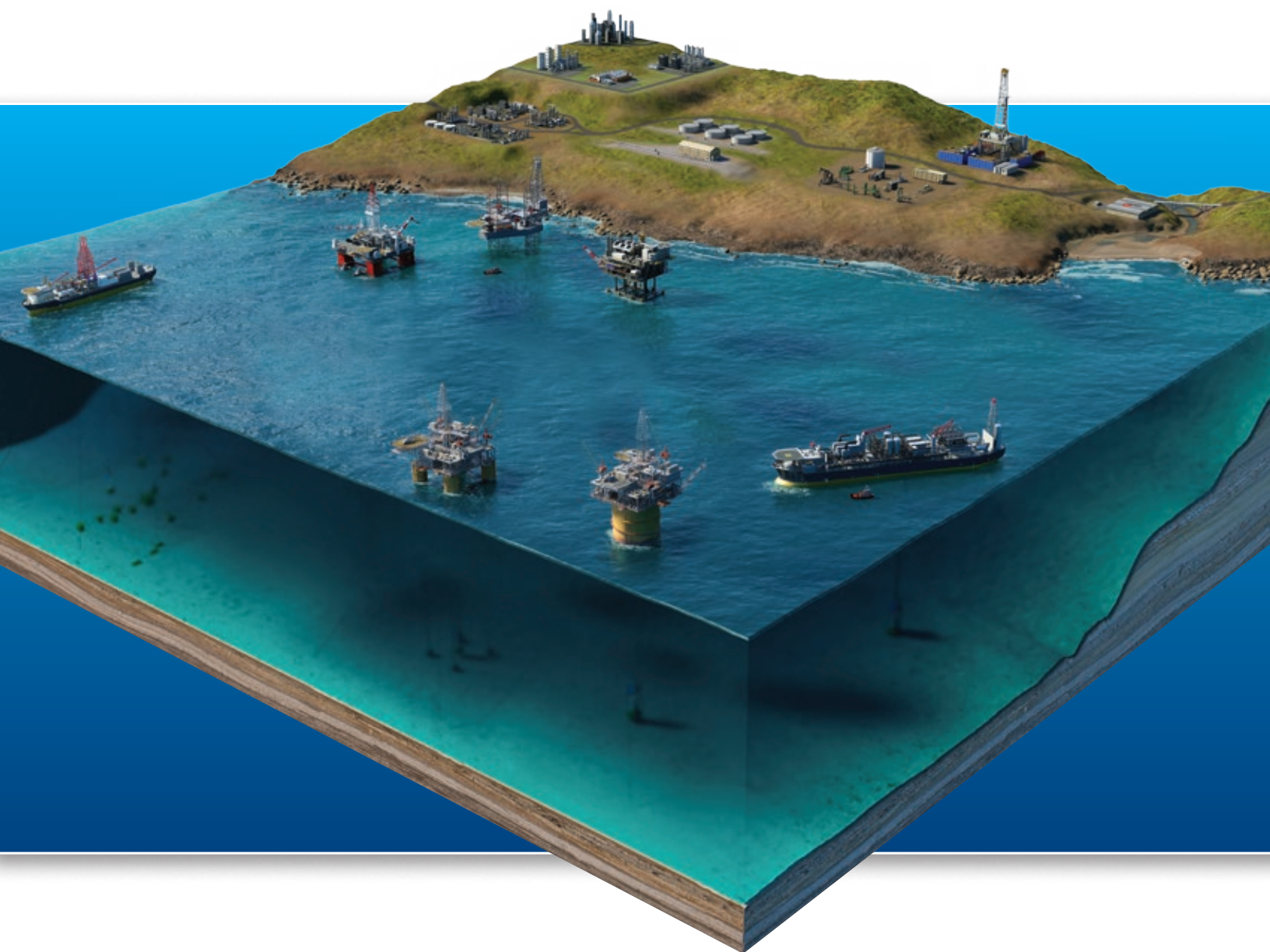


Manual gear operators and valve accessories

The DYNATORQUE® brand provides a single-source solution for gears and automated valve accessories, such as manual overrides, lockouts, and partial stroke test devices. An innovative engineering team and a state-of-the-art manufacturing facility allow the flexibility required to meet the customers' specific needs.



Valve Expertise



cameron.slb.com/valves

*Mark of Schlumberger
Other company, product, and service names
are the properties of their respective owners.
Copyright © 2016 Schlumberger. All rights reserved. VL-1007

 **CAMERON**
A Schlumberger Company