



WILO IL Submittal

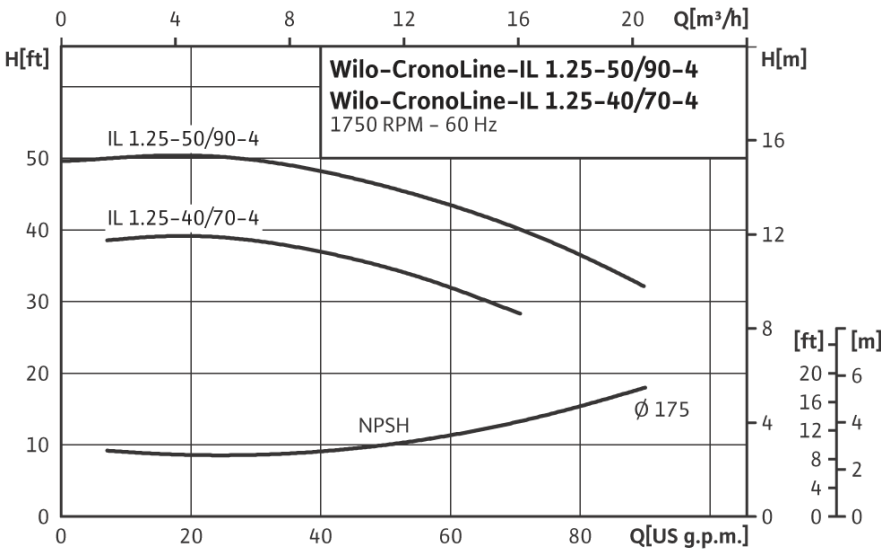
IL 1.25-50/90-4 & IL 1.25-40/70-4



Pumpen Intelligenz.

Project:	
Engineer:	
Contractor:	
Submitted By:	Date:
Approved By:	Date:

Tag #	Model #	Flow	Head	Hp	Volt/Phase	Motor Enclosure	RPM
	IL 1.25 - 50 / 90 - 4			1 1/2			1,750 (4 Pole)
	IL 1.5 - 40 / 70 - 4			1			1,750 (4 Pole)

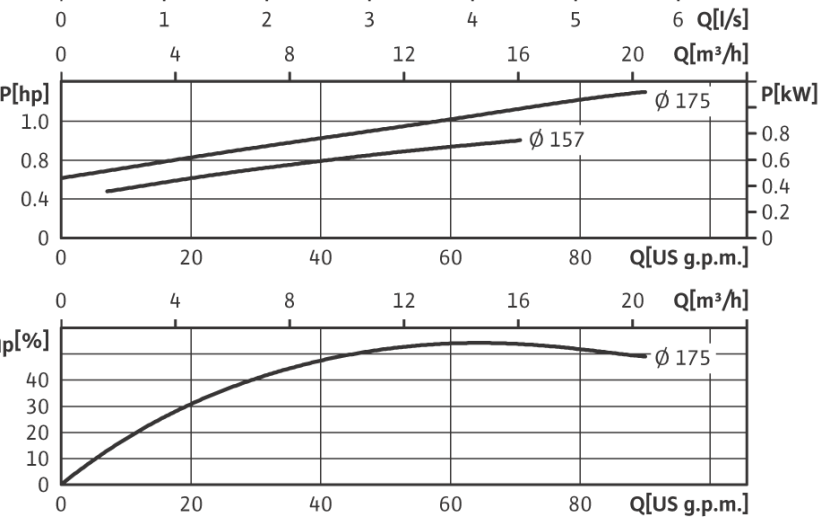


Applications

Max Temp: 20 to 250 Deg F (- 4 to 120 Deg C)
 285 Deg F (140 Deg C) optional seal
 Max Ambient Temp 104 Deg F (40 Deg C)
 Max Working Press 175 PSI (12 Bar)
 250 PSI (17 Bar) on request
 Fluids: Water or Water/Glycol to 50%
 Other Fluids - Contact WILO

Materials of Construction

Impeller Cast Bronze
 Cast Iron (optional)
 Shaft 316L Stainless Steel
 Volute Cast Iron (Cataphoresis Coated)
 Seal (Std) Silicium Carbide on Silicium Carbide
 HNBR Elastomer
 CrNiMo Spring



Approval Stamp Here

Wilo USA LLC
 1290 North 25th Avenue
 Melrose Park, Illinois 60160
 Phone: 866 945 6872

Fax: 708 338 9455

www.wilo-na.com

Phone: 866 945 6236

Wilo Canada Inc
 Bay 7 - 2915 - 10th Ave N. E.
 Calgary, Alberta, T2A 5L4
 Fax: 403 277 9456

Literature Number SD-IL 1.25-50/90 & 40/70-4-0708



WILO IL Submittal

IL 1.25-50/90-4 & IL 1.25-40/70-4



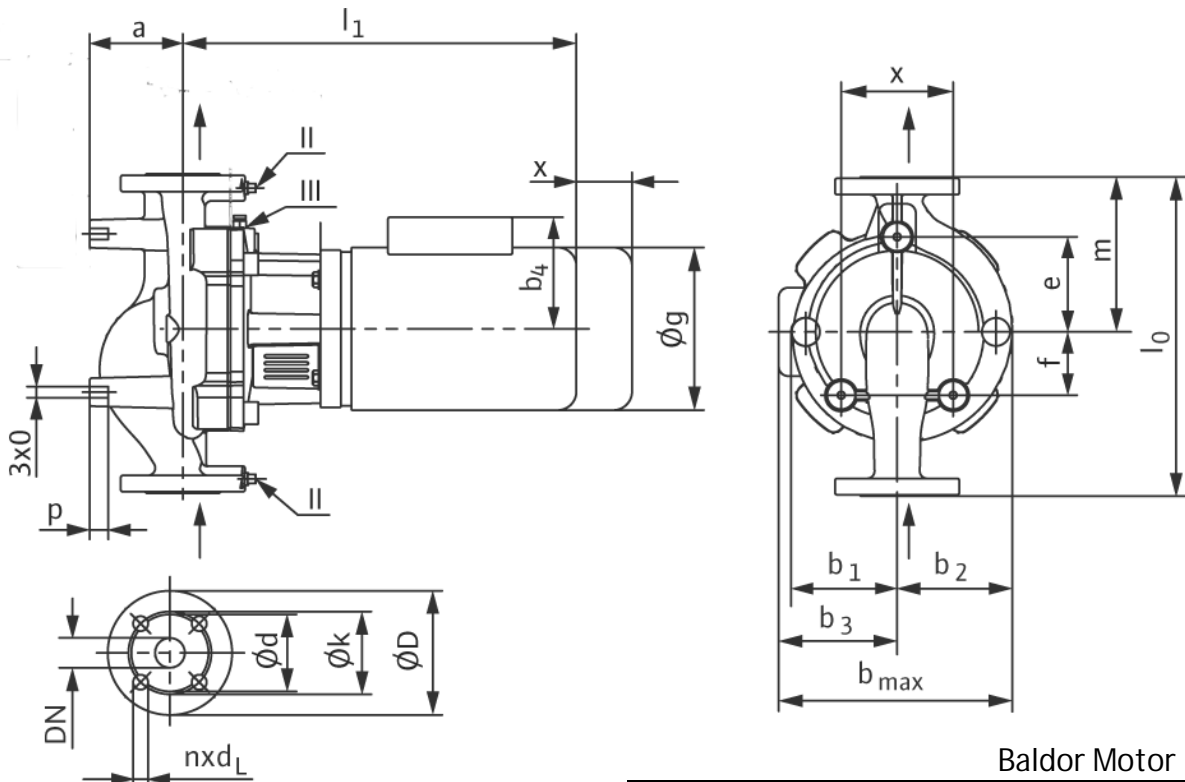
Pumpen Intelligenz.

Pump Dimensions IL 1.25-50/90-4

	l ₀	a	b ₁	b ₂	b ₃ 1~	b ₃ 3~	b _{max} 1~	b _{max} 3~	c	e	f	g 1~	g 3~	l ₁ 1~	l ₁ 3~	m	o	p	x	Wt max
Inch	13 1/2	4	4 1/2	4 7/8	5 5/8	5 5/8	10 1/2	10 1/2	4 3/4	4	2 7/8	7 1/4	7 1/8	17 7/8	16 7/8	6 5/8	3/8	3/4	3 5/8	101 lbs
mm	343	100	114	124	142	142	266	266	120	102	68	183	182	453	428	166	9/16	20	90	46 kg

Pump Dimensions IL 1.25-40/70-4

	l ₀	a	b ₁	b ₂	b ₃ 1~	b ₃ 3~	b _{max} 1~	b _{max} 3~	c	e	f	g 1~	g 3~	l ₁ 1~	l ₁ 3~	m	o	p	x	Wt max
Inch	13 1/2	4	4 1/2	4 7/8	5 5/8	5	10 1/2	10	4 3/4	4	2 7/8	7 1/4	6 1/4	16 7/8	17	6 5/8	3/8	3/4	3 5/8	95 lbs
mm	343	100	114	124	142	128	266	252	120	102	68	183	157	428	431	166	9/16	20	90	43 kg



Baldor Motor Information

Hp/kw	Volt	Phase	FLA
1 1/2 Hp (1.1 kw)	115 / 208 - 230	1	18 / 9.5 - 9
1 1/2 Hp (1.1 kw)	208 - 230 / 460 / 575	3	5 - 4.8 / 2.4 / 1.9

Flange Dimensions: 1.25" 125 # ANSI (250 # Optional)

Details	Flange	D	d	k (BCD)	n x dL
Imperial	1 1/4"	5 1/4	3	3 1/2	4 x 5/8
Metric	32 mm	133	78	89	4 x 16

Hp/kw	Volt	Phase	FLA
1.0 Hp (0.75 kw)	115 / 208 - 230	1	13.4 / 7.4 - 6.7
1.0 Hp (0.75 kw)	230 / 460 / 575	3	3.4 / 1.7 / 1.4

Wilo USA LLC
 1290 North 25th Avenue
 Melrose Park, Illinois 60160
 Phone: 866 945 6872

Fax: 708 338 9455

Phone: 866 945 6236

Wilo Canada Inc
 Bay 7 - 2915 - 10th Ave N. E.
 Calgary, Alberta, T2A 5L4
 Fax: 403 277 9456



WILO IL Submittal

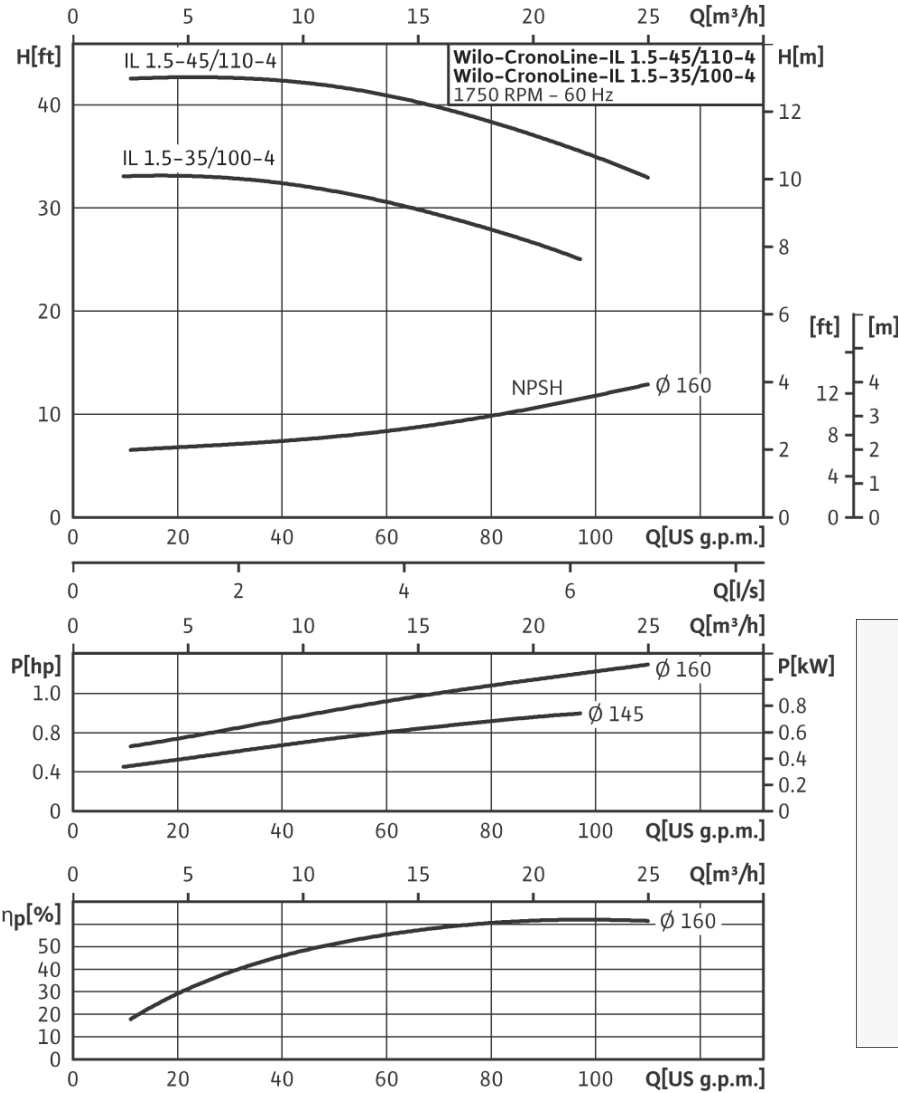
IL 1.5-45/110-4 & IL 1.5-35/100-4



Pumpen Intelligenz.

Project:	
Engineer:	
Contractor:	
Submitted By:	Date:
Approved By:	Date:

Tag #	Model #	Flow	Head	Hp	Volt/Phase	Motor Enclosure	RPM
	IL 1.5 - 45 / 110 - 4			1 1/2			1,750 (4 Pole)
	IL 1.5 - 35 / 100 - 4			1			1,750 (4 Pole)



Applications

- Max Temp: 20 to 250 Deg F (- 4 to 120 Deg C)
285 Deg F (140 Deg C) optional seal
- Max Ambient Temp 104 Deg F (40 Deg C)
- Max Working Press 175 PSI (12 Bar)
250 PSI (17 Bar) on request
- Fluids: Water or Water/Glycol to 50%
Other Fluids - Contact WILO

Materials of Construction

- Impeller Cast Bronze
Cast Iron (optional)
- Shaft 316L Stainless Steel
- Volute Cast Iron (Cataphoresis Coated)
- Seal (Std) Silicium Carbide on Silicium Carbide
HNBR Elastomer
CrNiMo Spring

Approval Stamp Here

Wilo USA LLC
1290 North 25th Avenue
Melrose Park, Illinois 60160
Phone: 866 945 6872

Fax: 708 338 9455

www.wilo-na.com

Phone: 866 945 6236

Wilo Canada Inc
Bay 7 - 2915 - 10th Ave N. E.
Calgary, Alberta, T2A 5L4
Fax: 403 277 9456

Literature Number SD-IL 1.5-45/110 & 35/100-4-0708



WILO IL Submittal

IL 1.5-45/110-4 & IL 1.5-35/100-4



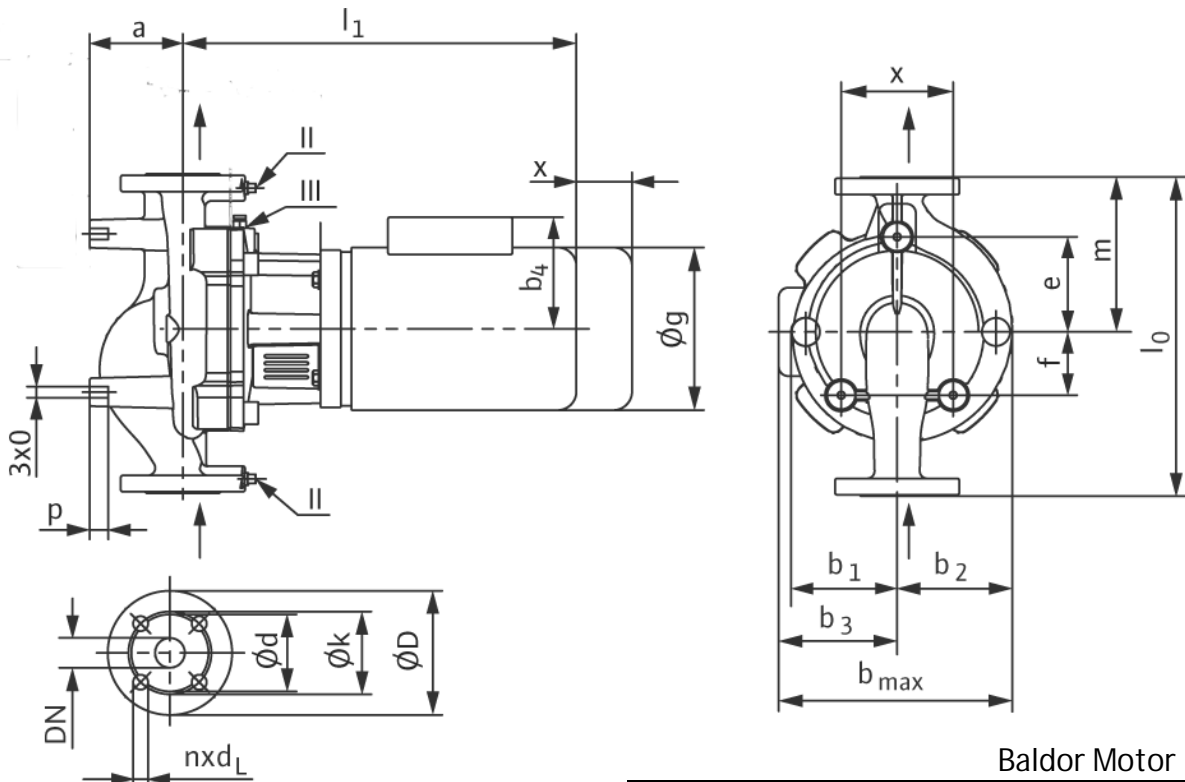
Pumpen Intelligenz.

Pump Dimensions IL 1.5-45/110-4

	l ₀	a	b ₁	b ₂	b ₃ 1~	b ₃ 3~	b _{max} 1~	b _{max} 3~	c	e	f	g 1~	g 3~	l ₁ 1~	l ₁ 3~	m	o	p	x	Wt max
Inch	14 ½	3 ¼	4 ½	5	5 ⅝	5 ⅝	10 ¾	10 ¾	5 ⅝	5 ⅝	2 ¼	7 ⅞	7 ⅞	18 ⅜	17 ⅞	7	⅝	¾	3 ¾	106 lbs
mm	368	82	114	129	142	142	272	272	130	149	58	183	183	468	442	178	⅝	20	95	48 kg

Pump Dimensions IL 1.5-35/100-4

	l ₀	a	b ₁	b ₂	b ₃ 1~	b ₃ 3~	b _{max} 1~	b _{max} 3~	c	e	f	g 1~	g 3~	l ₁ 1~	l ₁ 3~	m	o	p	x	Wt max
Inch	14 ½	3 ¼	4 ½	5	5 ⅝	5	10 ¾	10 ⅞	5 ⅝	5 ⅝	2 ¼	7 ⅞	6 ⅞	17 ⅞	17 ½	7	⅝	¾	3 ¾	100 lbs
mm	368	82	114	129	142	128	272	258	130	149	58	183	157	442	445	178	⅝	20	95	45 kg



Baldor Motor Information

Hp/kw	Volt	Phase	FLA
1 1/2 Hp (1.1 kw)	115 / 208 - 230	1	18 / 9.5 - 9
1 1/2 Hp (1.1 kw)	208 - 230 / 460 / 575	3	5 - 4.8 / 2.4 / 1.9

Flange Dimensions: 1.5" 125 # ANSI (250 # Optional)

Details	Flange	D	d	k (BCD)	n x dL
Imperial	1 1/2"	6	3 1/2	3 7/8	4 x 5/8
Metric	40 mm	155	90	99	4 x 16

Hp/kw	Volt	Phase	FLA
1.0 Hp (0.75 kw)	115 / 208 - 230	1	13.4 / 7.4 - 6.7
1.0 Hp (0.75 kw)	230 / 460 / 575	3	3.4 / 1.7 / 1.4

Wilo USA LLC
 1290 North 25th Avenue
 Melrose Park, Illinois 60160
 Phone: 866 945 6872 Fax: 708 338 9455

Wilo Canada Inc
 Bay 7 - 2915 - 10th Ave N. E.
 Calgary, Alberta, T2A 5L4
 Phone: 866 945 6236 Fax: 403 277 9456



WILO IL Submittal

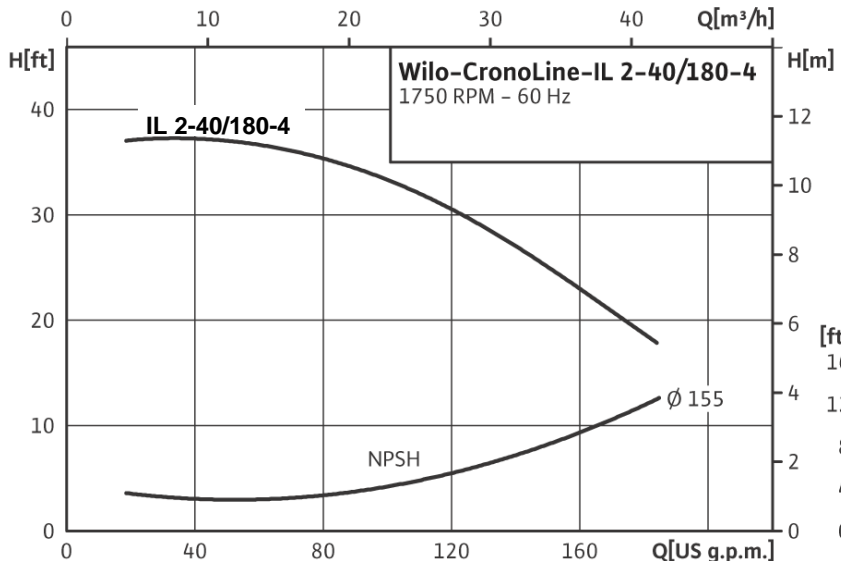
IL 2.0-40/180-4



Pumpen Intelligenz.

Project:	
Engineer:	
Contractor:	
Submitted By:	Date:
Approved By:	Date:

Tag #	Model #	Flow	Head	Hp	Volt/Phase	Motor Enclosure	RPM
	IL 2.0 - 40 / 180 - 4			1 1/2			1,750 (4 Pole)

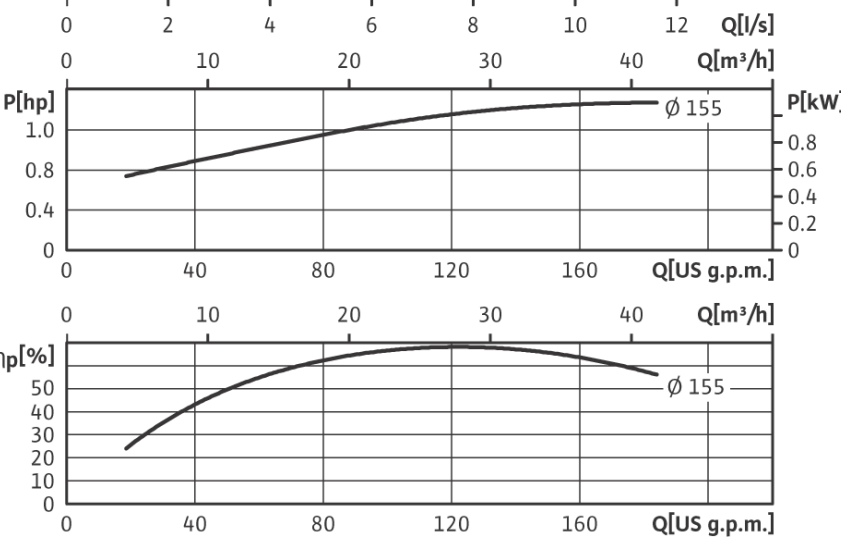


Applications

- Max Temp: 20 to 250 Deg F (- 4 to 120 Deg C)
285 Deg F (140 Deg C) optional seal
- Max Ambient Temp 104 Deg F (40 Deg C)
- Max Working Press 175 PSI (12 Bar)
250 PSI (17 Bar) on request
- Fluids: Water or Water/Glycol to 50%
Other Fluids - Contact WILO

Materials of Construction

- Impeller Cast Bronze
Cast Iron (optional)
- Shaft 316L Stainless Steel
- Volute Cast Iron (Cataphoresis Coated)
- Seal (Std) Silicium Carbide on Silicium Carbide
HNBR Elastomer
CrNiMo Spring



Approval Stamp Here

Wilo USA LLC
1290 North 25th Avenue
Melrose Park, Illinois 60160
Phone: 866 945 6872

Fax: 708 338 9455

www.wilo-na.com

Phone: 866 945 6236

Wilo Canada Inc
Bay 7 - 2915 - 10th Ave N. E.
Calgary, Alberta, T2A 5L4
Fax: 403 277 9456

Literature Number SD-IL 2-40/180-4-0708



WILO IL Submittal

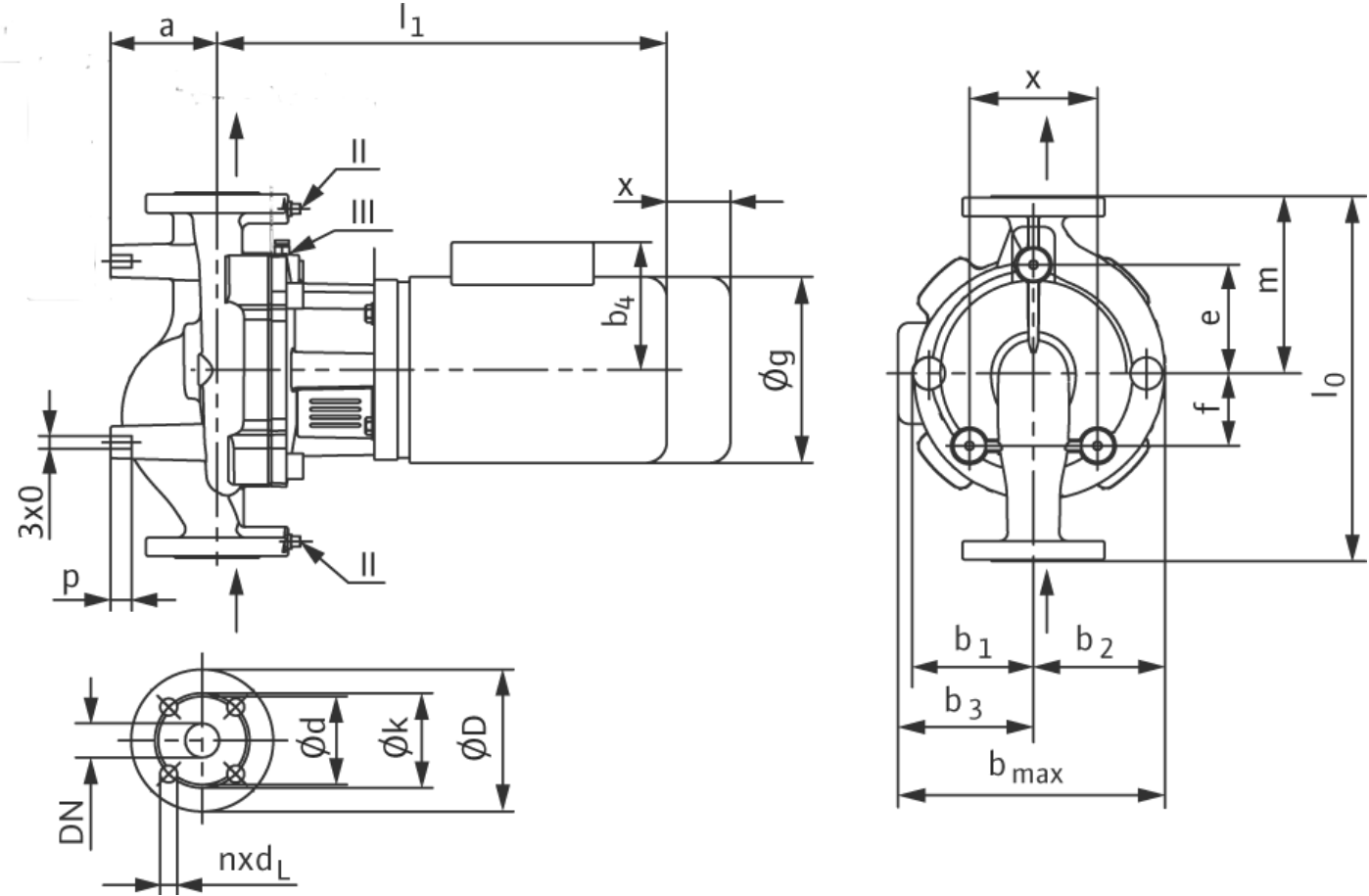
IL 2.0-40/180-4



Pumpen Intelligenz.

Pump Dimensions

	l ₀	a	b ₁	b ₂	b ₃ 1~	b ₃ 3~	b _{max} 1~	b _{max} 3~	c	e	f	g 1~	g 3~	l ₁ 1~	l ₁ 3~	m	o	p	x	Wt max
Inch	15	3 ½	4 ¾	5 ½	5	5 ¾	10 ½	11	6 ½	4 ¾	2	7 ½	7	18 ¾	17 ¾	7 ¾	¾	¾	4	115 lbs
mm	381	90	120	139	129	142	268	282	164	117	48	183	181	472	447	186	¾	20	100	52 kg



Flange Dimensions: 2" 125 # ANSI (250 # Optional)

Baldor Motor Information

Details	Flange	D	d	k (BCD)	n x d _L
Imperial	2"	6 1/2	4 3/16	4 3/4	4 x 3/4
Metric	50 mm	165	106	121	4 x 19

Hp/kw	Volt	Phase	FLA
1.5 Hp (1.1 kw)	115 / 208 - 230	1	18 / 9.5 - 9
1.5 Hp (1.1 kw)	208 - 230 / 460 / 575	3	5 - 4.8 / 2.4 / 1.9

Wilo USA LLC
 1290 North 25th Avenue
 Melrose Park, Illinois 60160
 Phone: 866 945 6872 Fax: 708 338 9455

Wilo Canada Inc
 Bay 7 - 2915 - 10th Ave N. E.
 Calgary, Alberta, T2A 5L4
 Phone: 866 945 6236 Fax: 403 277 9456

Literature Number SD-IL 2-40/180-4-0708



WILO IL Submittal

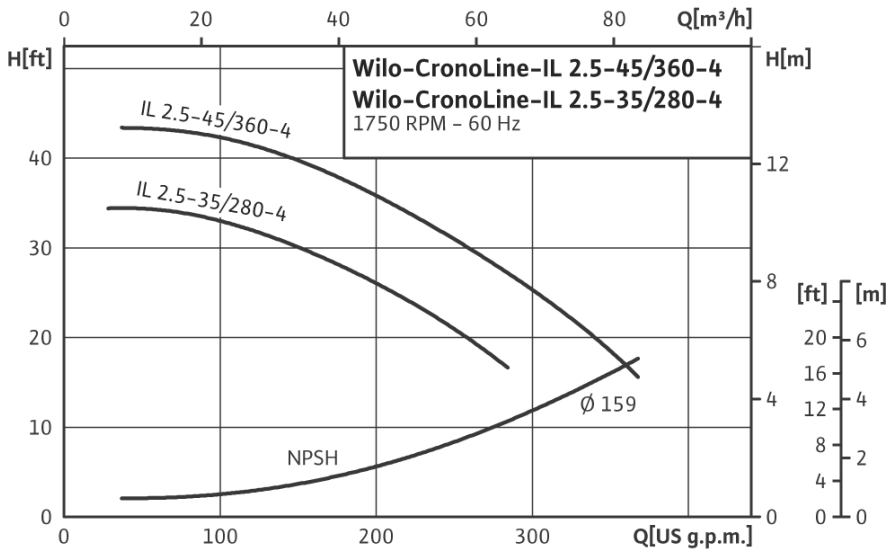
IL 2.5-45/360-4 & IL 2.5-35/280-4



Pumpen Intelligenz.

Project:	
Engineer:	
Contractor:	
Submitted By:	Date:
Approved By:	Date:

Tag #	Model #	Flow	Head	Hp	Volt/Phase	Motor Enclosure	RPM
	IL 2.5 - 45 / 360 - 4			3			1,750 (4 Pole)
	IL 2.5 - 35 / 280 - 4			2			1,750 (4 Pole)

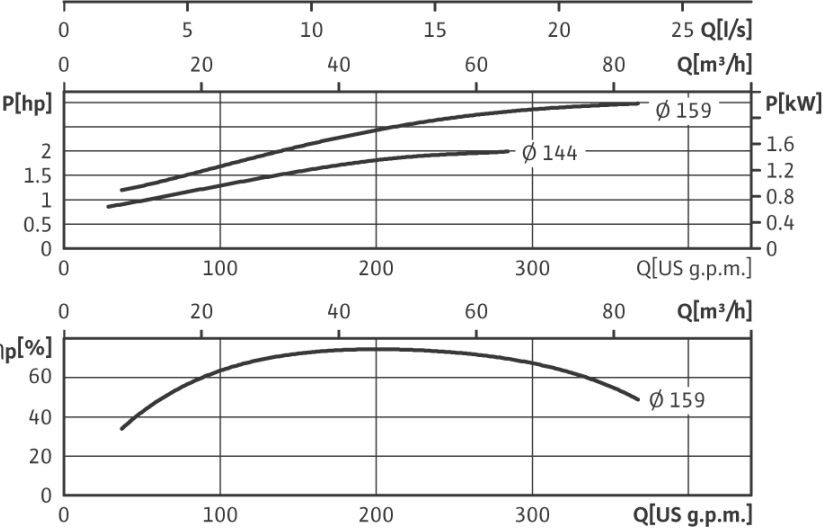


Applications

Max Temp: 20 to 250 Deg F (- 4 to 120 Deg C)
 285 Deg F (140 Deg C) optional seal
 Max Ambient Temp 104 Deg F (40 Deg C)
 Max Working Press 175 PSI (12 Bar)
 250 PSI (17 Bar) on request
 Fluids: Water or Water/Glycol to 50%
 Other Fluids - Contact WILO

Materials of Construction

Impeller Cast Bronze
 Cast Iron (optional)
 Shaft 316L Stainless Steel
 Volute Cast Iron (Cataphoresis Coated)
 Seal (Std) Silicium Carbide on Silicium Carbide
 HNBR Elastomer
 CrNiMo Spring



Wilo USA LLC
 1290 North 25th Avenue
 Melrose Park, Illinois 60160
 Phone: 866 945 6872

Fax: 708 338 9455

www.wilo-na.com

Phone: 866 945 6236

Wilo Canada Inc
 Bay 7 - 2915 - 10th Ave N. E.
 Calgary, Alberta, T2A 5L4
 Fax: 403 277 9456

Literature Number SD-IL 2.5-45/360 & 35/280-4-0708



WILO IL Submittal

IL 2.5-45/360-4 & IL 2.5-35/280-4



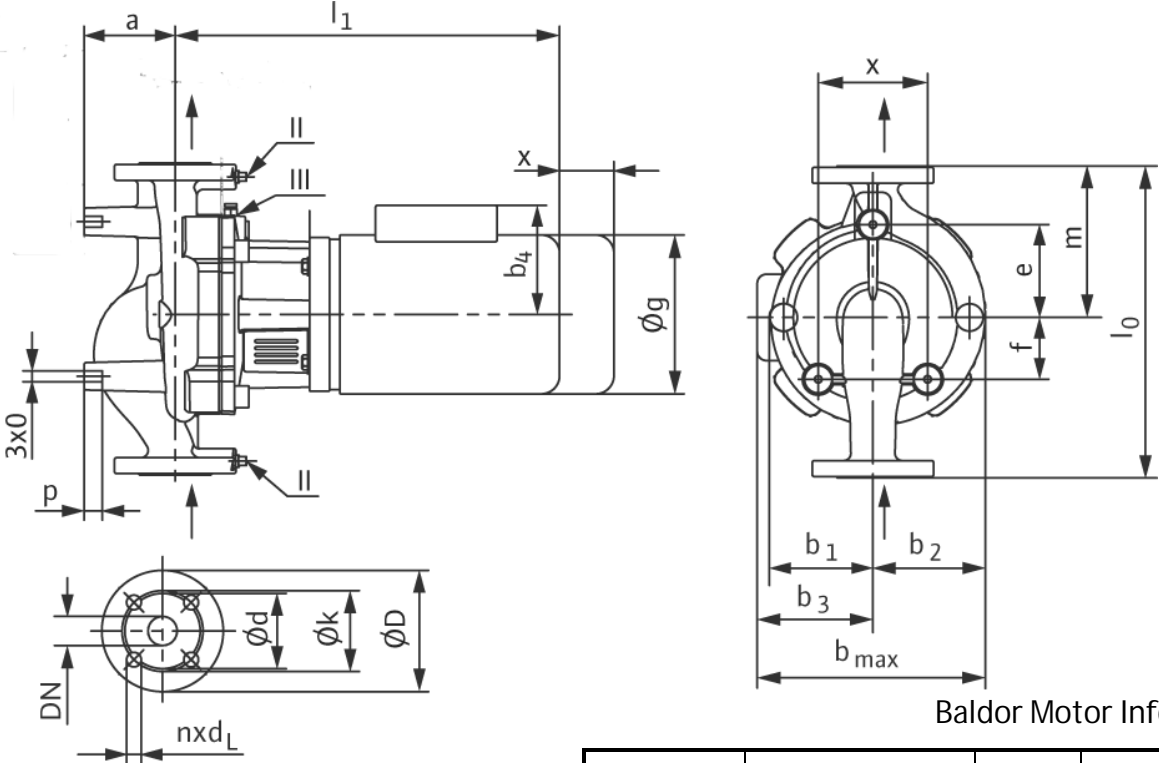
Pumpen Intelligenz.

Pump Dimensions IL 2.5-45/360-4

	l ₀	a	b ₁	b ₂	b ₃	b _{max}	c	e	f	g	l ₁	m	o	p	x	Wt
Inch	17 1/2	4 3/8	5	5 7/8	5 5/8	11 3/8	7	5 1/2	2 3/8	7 1/8	19 3/4	8 1/2	1/2	3/4	4 3/4	143 lbs
mm	445	110	127	147	142	290	180	140	60	182	500	216	1/2	20	120	65 kg

Pump Dimensions IL 2.5-35/280-4

	l ₀	a	b ₁	b ₂	b _{3 1~}	b _{3 3~}	b _{max 1~}	b _{max 3~}	c	e	f	g _{1~}	g _{3~}	l _{1 1~}	l _{1 3~}	m	o	p	x	Wt max
Inch	17 1/2	4 3/8	5	5 7/8	5 5/8	5 5/8	11 3/8	11 3/8	7	5 1/2	2 3/8	7 1/8	7 1/8	19 3/4	18 3/4	8 1/2	1/2	3/4	4 3/4	137 lbs
mm	445	110	127	147	142	142	290	290	180	140	60	182	182	500	478	216	1/2	20	120	62 kg



Hp/kw	Volt	Phase	FLA
3 Hp (2.25 kw)	On Request	1	On Request
3 Hp (2.25 kw)	208 - 230 / 460 / 575	3	8.4 - 8.2 / 4.1 / 3.3

Flange Dimensions: 2.5" 125 # ANSI (250 # Optional)

Details	Flange	D	d	k (BCD)	n x dL
Imperial	2 1/2"	4 5/16	4 15/16	5 1/2	4 x 3/4
Metric	65 mm	110	126	140	4 x 19

Hp/kw	Volt	Phase	FLA
2 Hp (1.5 kw)	115 / 208 - 230	1	20.4 / 10.2 - 10
2 Hp (1.5 kw)	208 - 230 / 460 / 575	3	6.8 - 6.4 / 3.2 / 2.6

Wilo USA LLC
 1290 North 25th Avenue
 Melrose Park, Illinois 60160
 Phone: 866 945 6872

Fax: 708 338 9455

Phone: 866 945 6236

Wilo Canada Inc
 Bay 7 - 2915 - 10th Ave N. E.
 Calgary, Alberta, T2A 5L4
 Fax: 403 277 9456



WILO IL Submittal

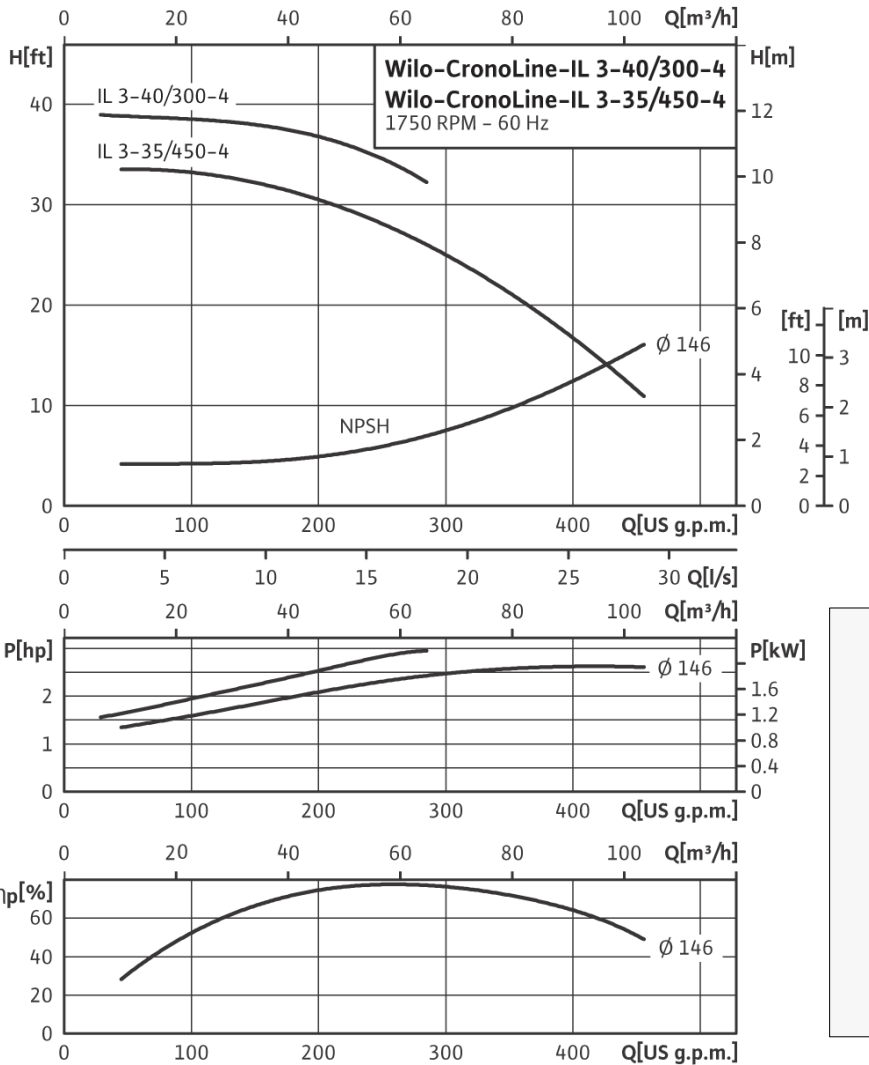
IL 3.0-40/300-4 & IL 3.0-35/450-4



Pumpen Intelligenz.

Project:	
Engineer:	
Contractor:	
Submitted By:	Date:
Approved By:	Date:

Tag #	Model #	Flow	Head	Hp	Volt/Phase	Motor Enclosure	RPM
	IL 3.0 - 40 / 300 - 4			3			1,750 (4 Pole)
	IL 3.0 - 35 / 450 - 4			3			1,750 (4 Pole)



Applications

- Max Temp: 20 to 250 Deg F (- 4 to 120 Deg C)
 285 Deg F (140 Deg C) optional seal
- Max Ambient Temp 104 Deg F (40 Deg C)
- Max Working Press 175 PSI (12 Bar)
 250 PSI (17 Bar) on request
- Fluids: Water or Water/Glycol to 50%
 Other Fluids - Contact WILO

Materials of Construction

- Impeller Cast Bronze
 Cast Iron (optional)
- Shaft 316L Stainless Steel
- Volute Cast Iron (Cataphoresis Coated)
- Seal (Std) Silicium Carbide on Silicium Carbide
 HNBR Elastomer
 CrNiMo Spring



Wilo USA LLC
 1290 North 25th Avenue
 Melrose Park, Illinois 60160
 Phone: 866 945 6872

Fax: 708 338 9455

www.wilo-na.com

Phone: 866 945 6236

Wilo Canada Inc
 Bay 7 - 2915 - 10th Ave N. E.
 Calgary, Alberta, T2A 5L4
 Fax: 403 277 9456

Literature Number SD-IL 3.0-40/300 & 35/450-4-0708



WILO IL Submittal

IL 3.0-40/300-4 & IL 3.0-35/450-4



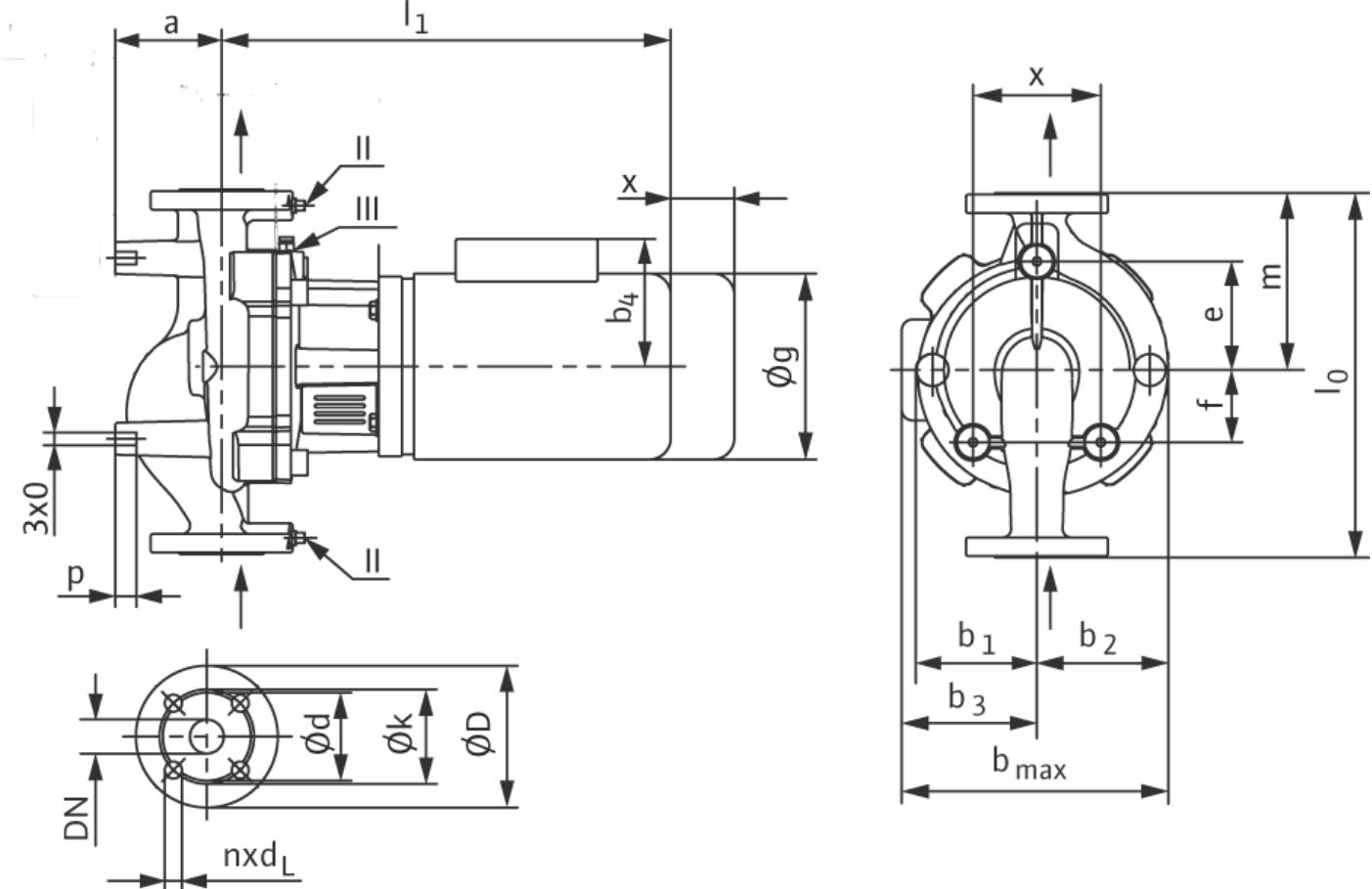
Pumpen Intelligenz.

Pump Dimensions IL 3.0-40/300-4

Dimensions	l ₀	a	b ₁	b ₂	b ₃	b _{max}	c	e	f	g	l ₁	m	o	p	x	Weight
Inches	19	4 7/8	5 3/8	6 3/8	5 5/8	12	7	5	2 7/8	7 1/8	20	8 3/8	1/2	3/4	4 7/8	165 lbs
mm	482	123	136	162	142	305	180	128	72	182	507	217	1/2	20	120	75 kg

Pump Dimensions IL 3.0-35/450-4

Dimensions	l ₀	a	b ₁	b ₂	b ₃	b _{max}	c	e	f	g	l ₁	m	o	p	x	Weight
Inches	19	4 7/8	5 3/8	6 3/8	5 5/8	12	7	5	2 7/8	7 1/8	20	8 3/8	1/2	3/4	4 7/8	165 lbs
mm	482	123	136	162	142	305	180	128	72	182	507	217	1/2	20	120	75 kg



Flange Dimensions: 3" 125 # ANSI (250 # Optional)

Details	Flange	D	d	k (BCD)	n x dL
Imperial	3"	8 1/4	5 11/16	6	4 x 3/4
Metric	80 mm	210	145	152	4 x 19

Baldor Motor Information

Hp/kw	Volt	Phase	Full Load Amps
3 Hp (2.2 kw)	On Request	1	On Request
3 Hp (2.2 kw)	208 - 230/460/575	3	8.4 - 8.2 / 4.1 / 3.3

Wilo USA LLC
 1290 North 25th Avenue
 Melrose Park, Illinois 60160
 Phone: 866 945 6872

Fax: 708 338 9455

Phone: 866 945 6236

Wilo Canada Inc
 Bay 7 - 2915 - 10th Ave N. E.
 Calgary, Alberta, T2A 5L4
 Fax: 403 277 9456



WILO IL Submittal

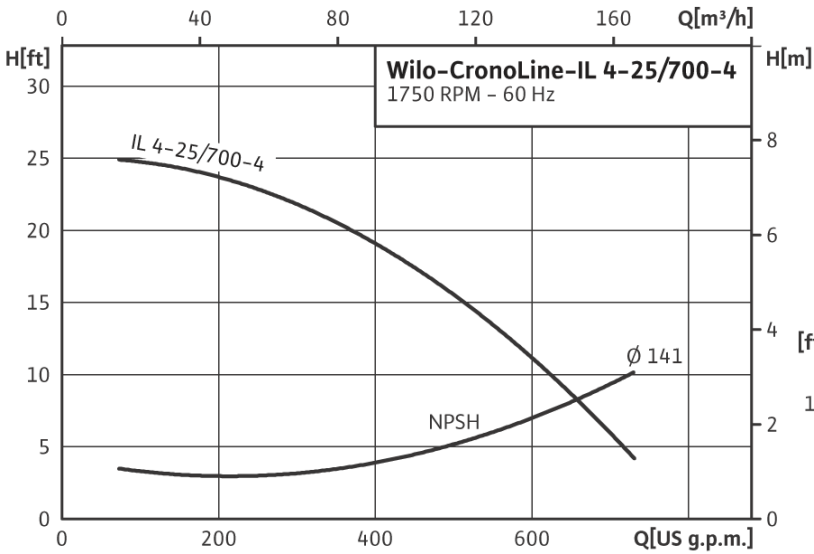
IL 4.0-25/700-4



Pumpen Intelligenz.

Project:	
Engineer:	
Contractor:	
Submitted By:	Date:
Approved By:	Date:

Tag #	Model #	Flow	Head	Hp	Volt/Phase	Motor Enclosure	RPM
	IL 4.0 - 25 / 700 - 4			3			1,750 (4 Pole)

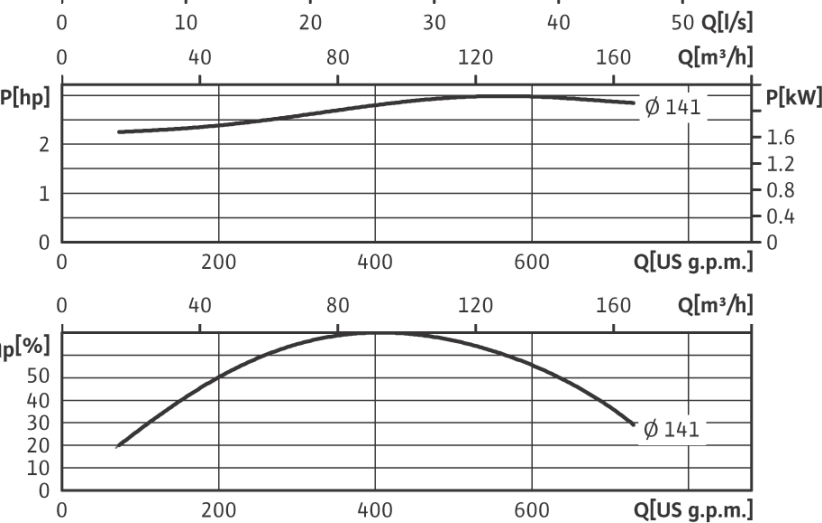
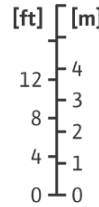


Applications

- Max Temp: 20 to 250 Deg F (- 4 to 120 Deg C)
285 Deg F (140 Deg C) optional seal
- Max Ambient Temp 104 Deg F (40 Deg C)
- Max Working Press 175 PSI (12 Bar)
250 PSI (17 Bar) on request
- Fluids: Water or Water/Glycol to 50%
Other Fluids - Contact WILO

Materials of Construction

- Impeller Cast Bronze
- Cast Iron (optional)
- Shaft 316L Stainless Steel
- Volute Cast Iron (Cataphoresis Coated)
- Seal (Std) Silicium Carbide on Silicium Carbide
- HNBR Elastomer
- CrNiMo Spring



Approval Stamp Here

Wilo USA LLC
1290 North 25th Avenue
Melrose Park, Illinois 60160
Phone: 866 945 6872

Fax: 708 338 9455

www.wilo-na.com

Phone: 866 945 6236

Wilo Canada Inc
Bay 7 - 2915 - 10th Ave N. E.
Calgary, Alberta, T2A 5L4
Fax: 403 277 9456

Literature Number SD-IL 4-25/700-4-0708



WILO IL Submittal

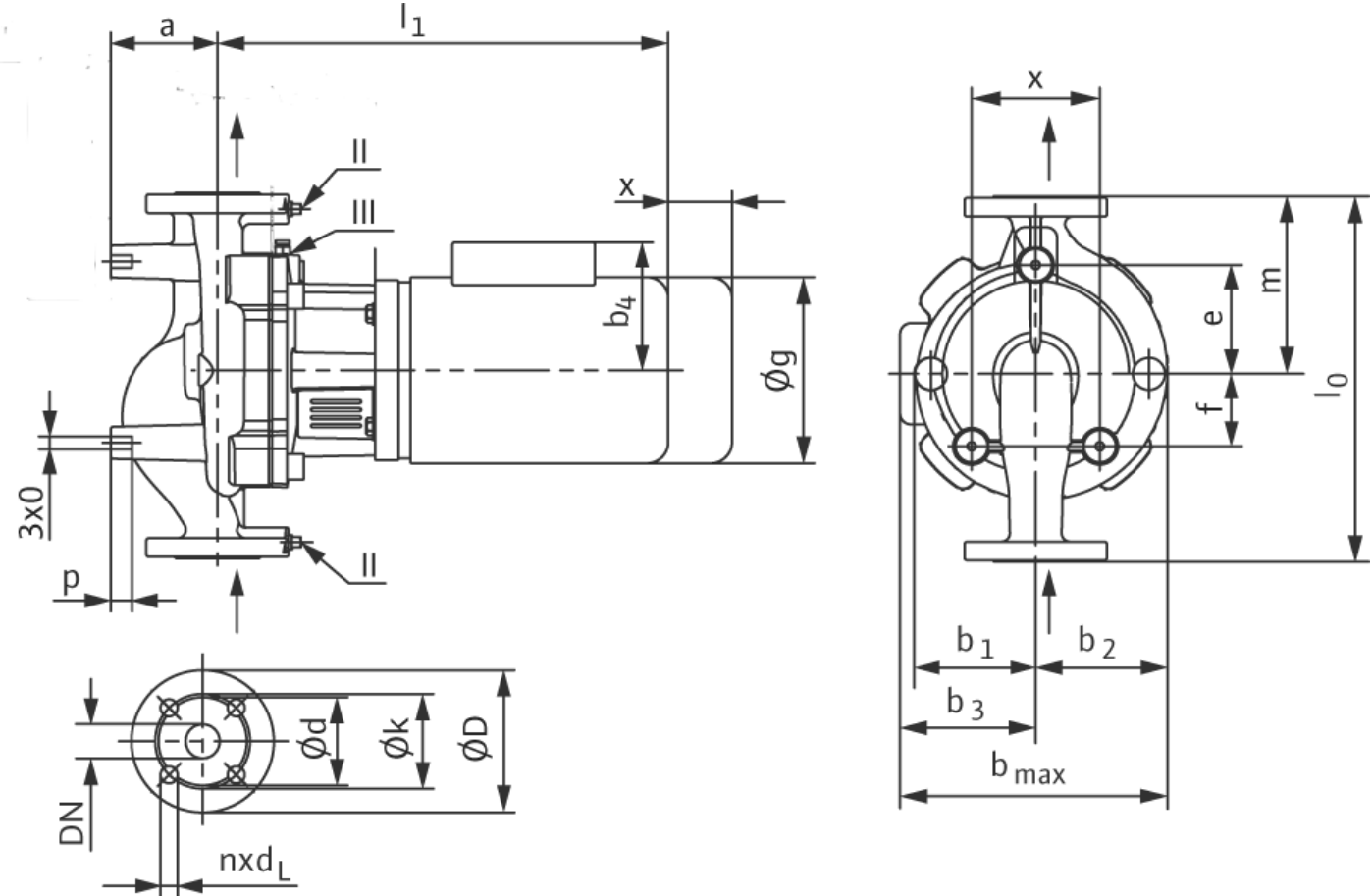
IL 4.0-25/700-4



Pumpen Intelligenz.

Pump Dimensions

Dimensions	l ₀	a	b ₁	b ₂	b ₃	b _{max}	c	e	f	g	l ₁	m	o	p	x	Weight
Inches	20 ½	5 ⅝	6 ¼	7 ¾	5 ⅝	13 ⅞	7 ⅞	9 ¼	2 ⅜	7 ⅞	21 ¼	10 ⅝	½	¾	5 ⅝	203 lbs
mm	521	132	158	196	143	339	200	234	60	182	541	262	½	20	135	92 kg



Flange Dimensions: 4" 125 # ANSI (250 # Optional)

Baldor Motor Information

Details	Flange	D	d	k (BCD)	n x dL
Imperial	4"	10	7	7 1/2	8 x 3/4
Metric	100 mm	254	176	191	8 x 19

Hp/kw	Volt	Phase	Full Load Amps
3 Hp (2.2 kw)	On Request	1	On Request
3 Hp (2.2 kw)	208 - 230/460/575	3	8.4 - 8.2 / 4.1 / 3.3

Wilo USA LLC
 1290 North 25th Avenue
 Melrose Park, Illinois 60160
 Phone: 866 945 6872 Fax: 708 338 9455

Wilo Canada Inc
 Bay 7 - 2915 - 10th Ave N. E.
 Calgary, Alberta, T2A 5L4
 Phone: 866 945 6236 Fax: 403 277 9456

Literature Number SD-IL 4-25/700-4-0708



WILO IL Submittal

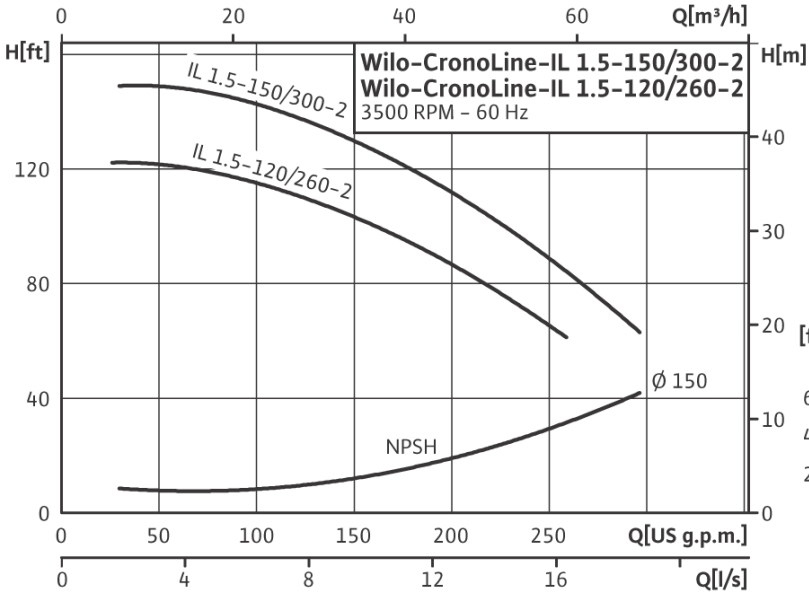
IL 1.5-150/300-2 & IL 1.5-120/260-2



Pumpen Intelligenz.

Project:	
Engineer:	
Contractor:	
Submitted By:	Date:
Approved By:	Date:

Tag #	Model #	Flow	Head	Hp	Volt/Phase	Motor Enclosure	RPM
	IL 1.5 - 150 / 300 - 2			10			3,500 (2 Pole)
	IL 1.5 - 120 / 260 - 2			7 1/2			3,500 (2 Pole)

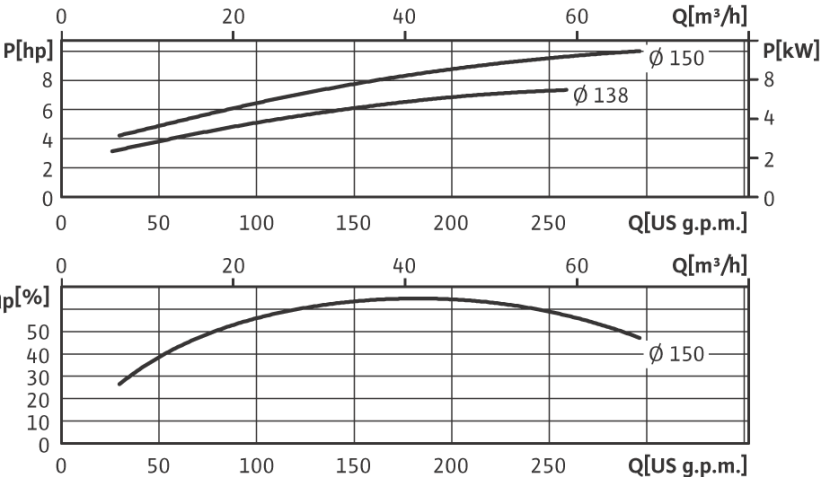


Applications

- Max Temp: 20 to 250 Deg F (- 4 to 120 Deg C)
285 Deg F (140 Deg C) optional seal
- Max Ambient Temp 104 Deg F (40 Deg C)
- Max Working Press 175 PSI (12 Bar)
250 PSI (17 Bar) on request
- Fluids: Water or Water/Glycol to 50%
Other Fluids - Contact WILO

Materials of Construction

- Impeller Cast Bronze
Cast Iron (optional)
- Shaft 316L Stainless Steel
- Volute Cast Iron (Cataphoresis Coated)
- Seal (Std) Silicium Carbide on Silicium Carbide
HNBR Elastomer
CrNiMo Spring



Approval Stamp Here

Wilo USA LLC
 1290 North 25th Avenue
 Melrose Park, Illinois 60160
 Phone: 866 945 6872

Fax: 708 338 9455

www.wilo-na.com

Phone: 866 945 6236

Wilo Canada Inc
 Bay 7 - 2915 - 10th Ave N. E.
 Calgary, Alberta, T2A 5L4
 Fax: 403 277 9456

Literature Number SD-IL 1.5-150/300 & 120/260-2-0708



WILO IL Submittal

IL 1.5-150/300-2 & IL 1.5-120/260-2

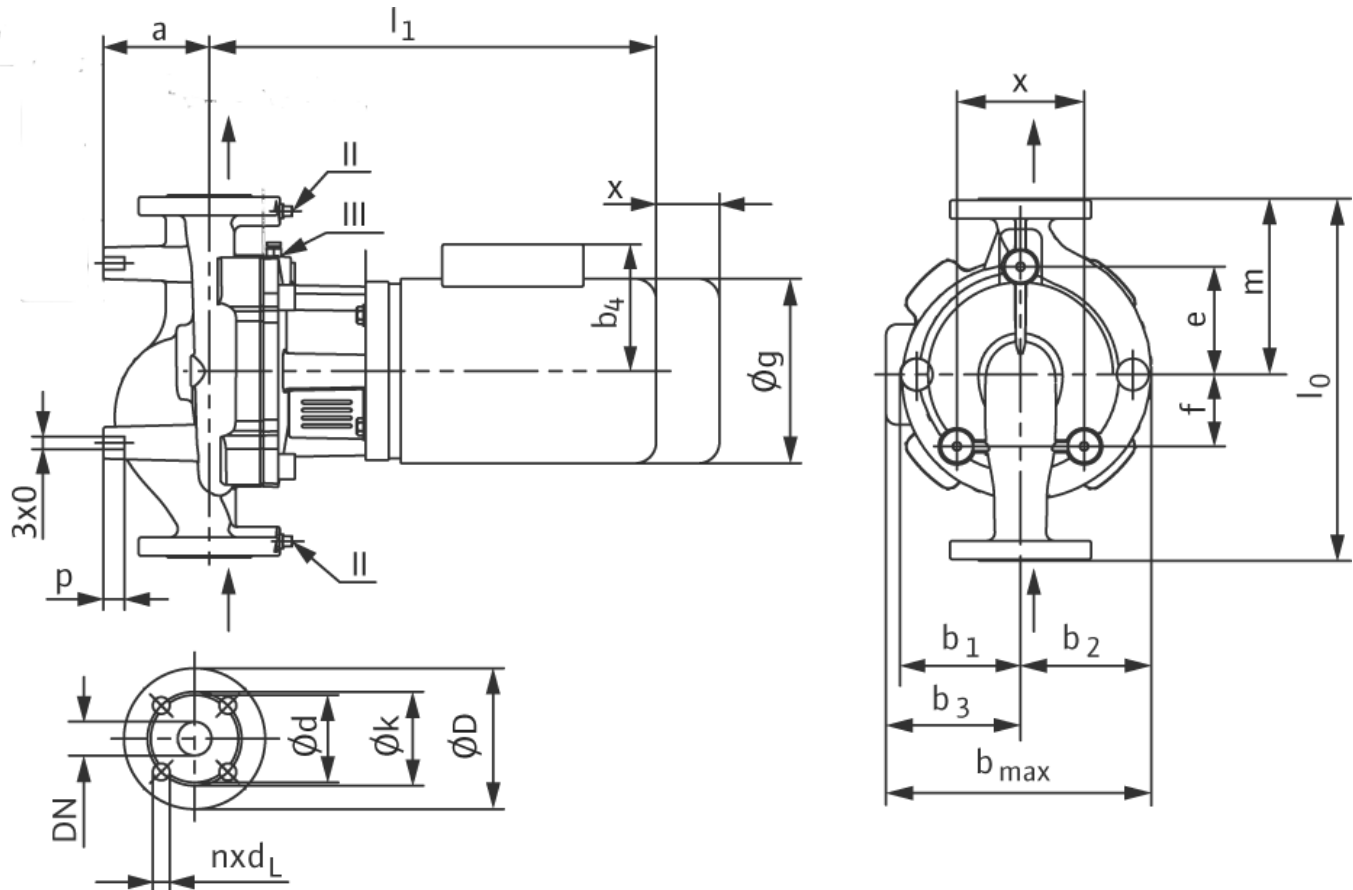


Pump Dimensions IL 1.5-150/300-2

Dimension	l ₀	a	b ₁	b ₂	b ₃	b _{max}	c	e	f	g	l ₁	m	o	p	x	Wt
Inches	14 ½	3 ¼	4 ½	5	8	13	5 ⅞	5 ⅞	2 ¼	10 ¼	23 ½	7	¾	¾	3 ¾	183 lbs
mm	368	82	114	129	201	330	130	149	58	259	598	178	¾	20	95	83 kg

Pump Dimensions IL 1.5-120/260-2

Dimension	l ₀	a	b ₁	b ₂	b ₃	b _{max}	c	e	f	g	l ₁	m	o	p	x	Wt
Inches	14 ½	3 ¼	4 ½	5	6 ¾	12	5 ⅞	5 ⅞	2 ¼	8 ¾	22 ½	7	¾	¾	3 ¾	157 lbs
mm	368	82	114	129	175	304	130	149	58	218	563	178	¾	20	95	71 kg



Flange Dimensions: 1.5" 125 # ANSI (250 # Optional)

Baldor Motor Information

Details	Flange	D	d	k (BCD)	n x d _L
Imperial	1 1/2"	6	3 1/2	3 7/8	4 x 5/8
Metric	40 mm	155	90	99	4 x 16

Hp/kw	Volt	Phase	FLA
10 Hp (7.5 kw)	208 - 230 / 460 / 575	3	25.6 - 23.2 / 11.6 / 9.6
7 1/2 Hp (5.6 kw)	208 - 230 / 460 / 575	3	18.6 - 17.4 / 8.7 / 7

Wilo USA LLC
 1290 North 25th Avenue
 Melrose Park, Illinois 60160
 Phone: 866 945 6872

Fax: 708 338 9455

Phone: 866 945 6236

Wilo Canada Inc
 Bay 7 - 2915 - 10th Ave N. E.
 Calgary, Alberta, T2A 5L4
 Fax: 403 277 9456

Literature Number SD-IL 1.5-150/300 & 120/260-2-0708



WILO IL Submittal

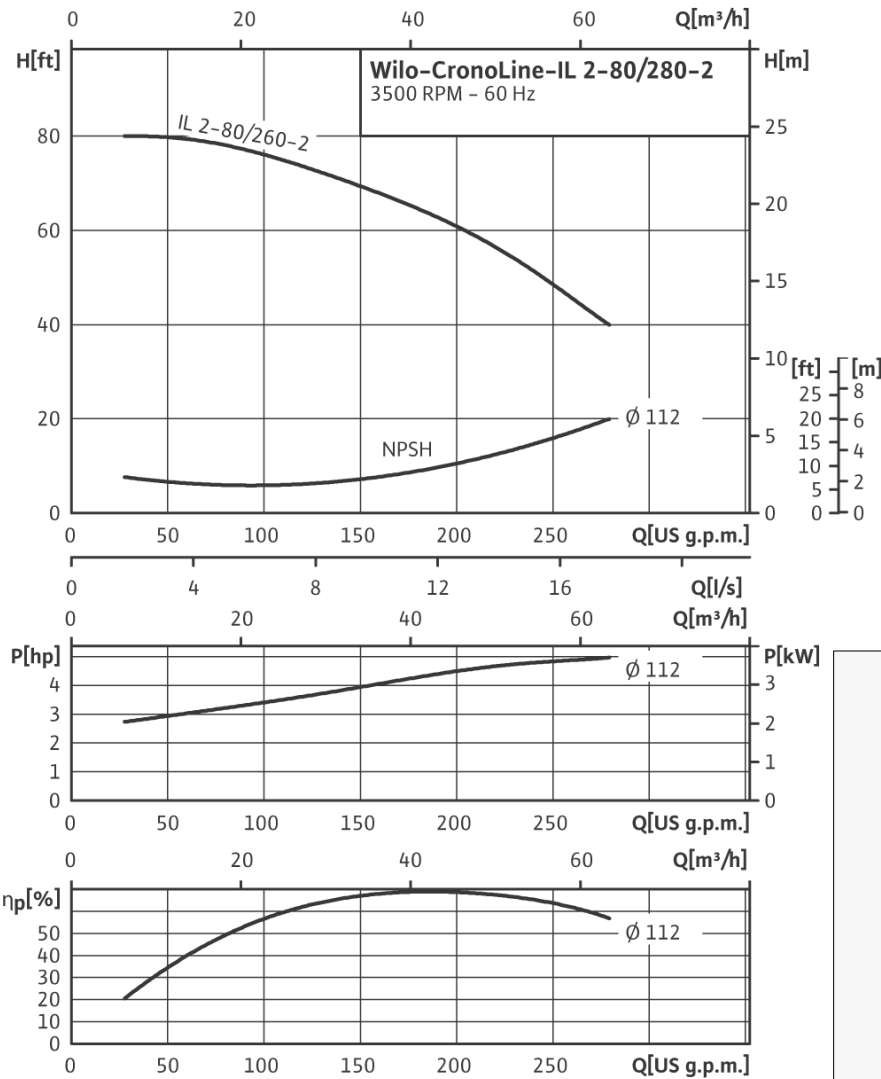
IL 2-80/280-2



Pumpen Intelligenz.

Project:	
Engineer:	
Contractor:	
Submitted By:	Date:
Approved By:	Date:

Tag #	Model #	Flow	Head	Hp	Volt/Phase	Motor Enclosure	RPM
	IL 2 - 80 / 280 - 2			5			3,500 (2 Pole)



Approval Stamp Here

Wilo USA LLC
 1290 North 25th Avenue
 Melrose Park, Illinois 60160
 Phone: 866 945 6872

Fax: 708 338 9455

www.wilo-na.com

Phone: 866 945 6236

Wilo Canada Inc
 Bay 7 - 2915 - 10th Ave N. E.
 Calgary, Alberta, T2A 5L4
 Fax: 403 277 9456

Literature Number SD-IL 2-80/280-2-0708

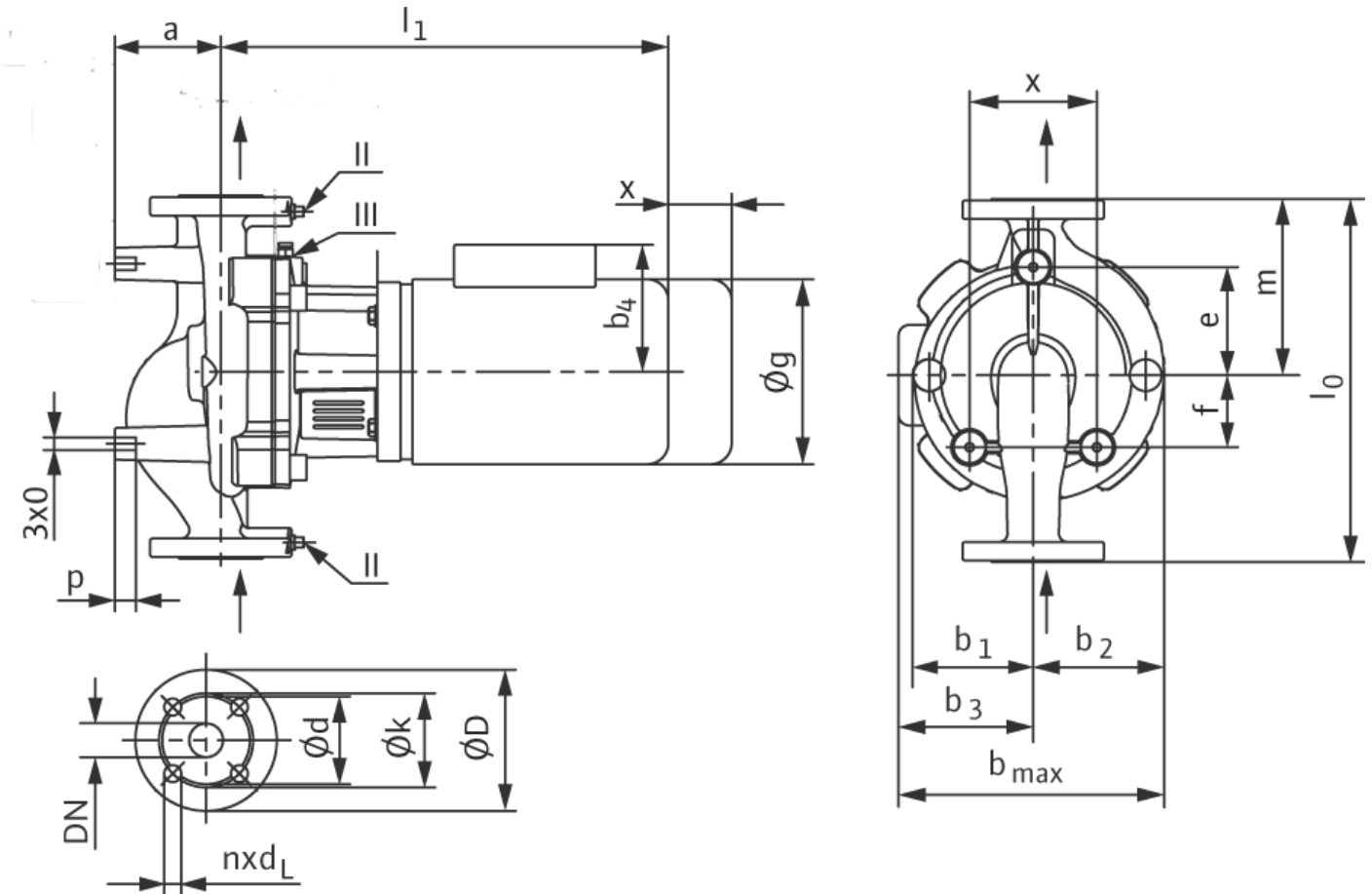


WILO IL Submittal IL 2-80/280-2



Pump Dimensions

Dimensions	l ₀	a	b ₁	b ₂	b ₃	b _{max}	c	e	f	g	l ₁	m	o	p	x	Weight
Inches	14 ½	4 ¼	4	4 ⅝	6 ⅜	11	5 ½	3 ⅞	2 ½	8 ⅜	21 ¾	6 ⅝	⅝	¾	4	146 lbs
mm	368	105	102	119	161	281	140	99	54	218	552	169	⅝	20	100	66 kg



Flange Dimensions: 2" 125 # ANSI (250 # Optional)

Motor Information

Details	Flange	D	d	k (BCD)	n x dL
Imperial	2"	6 1/2	4 3/16	4 3/4	4 x 3/4
Metric	50 mm	165	106	121	4 x 19

Hp/kw	Volt	Phase	FLA
5 Hp (3.7 kw)	208 - 230 / 460 / 575	3	13.2 - 12 / 6 / 4.8

Wilo USA LLC
1290 North 25th Avenue
Melrose Park, Illinois 60160
Phone: 866 945 6872

Fax: 708 338 9455

Wilo Canada Inc
Bay 7 - 2915 - 10th Ave N. E.
Calgary, Alberta, T2A 5L4
Phone: 866 945 6236
Fax: 403 277 9456

Literature Number SD-IL 2-80/280-2-0708



WILO IL Submittal

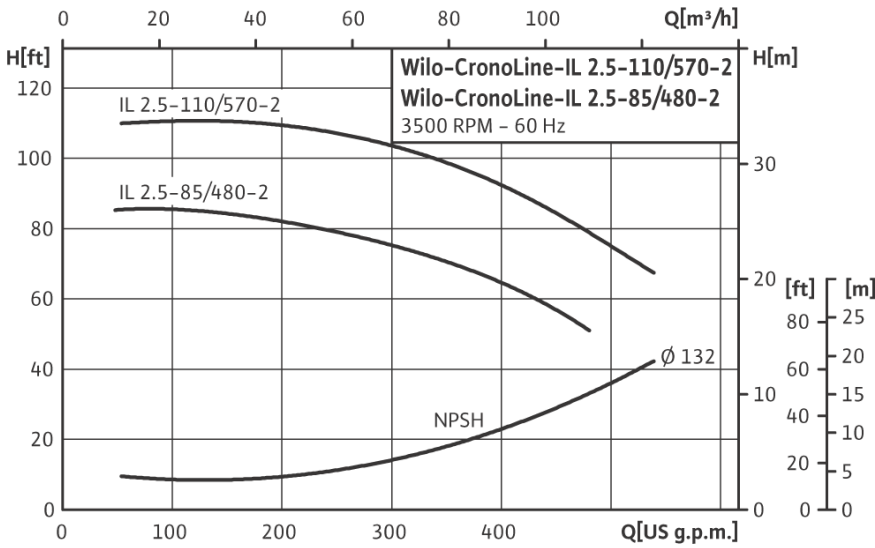
IL 2.5-110/570-2 & IL 2.5-85/480-2



Pumpen Intelligenz.

Project:	
Engineer:	
Contractor:	
Submitted By:	Date:
Approved By:	Date:

Tag #	Model #	Flow	Head	Hp	Volt/Phase	Motor Enclosure	RPM
	IL 2.5 - 110 / 570 - 2			15			3,500 (2 Pole)
	IL 2.5 - 85 / 480 - 2			10			3,500 (2 Pole)

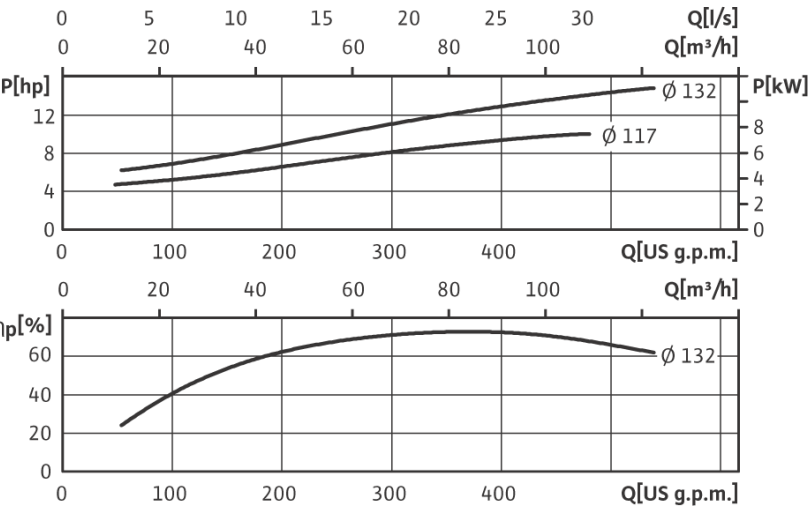


Applications

- Max Temp: 20 to 250 Deg F (- 4 to 120 Deg C)
285 Deg F (140 Deg C) optional seal
- Max Ambient Temp 104 Deg F (40 Deg C)
- Max Working Press 175 PSI (12 Bar)
250 PSI (17 Bar) on request
- Fluids: Water or Water/Glycol to 50%
Other Fluids - Contact WILO

Materials of Construction

- Impeller Cast Bronze
- Cast Iron (optional)
- Shaft 316L Stainless Steel
- Volute Cast Iron (Cataphoresis Coated)
- Seal (Std) Silicium Carbide on Silicium Carbide
HNBR Elastomer
CrNiMo Spring



Approval Stamp Here

Wilo USA LLC
1290 North 25th Avenue
Melrose Park, Illinois 60160
Phone: 866 945 6872

Fax: 708 338 9455

www.wilo-na.com

Phone: 866 945 6236

Wilo Canada Inc
Bay 7 - 2915 - 10th Ave N. E.
Calgary, Alberta, T2A 5L4
Fax: 403 277 9456

Literature Number SD-IL 2.5-100/570 & 85/480-2-0708



WILO IL Submittal

IL 2.5-110/570-2 & IL 2.5-85/480-2



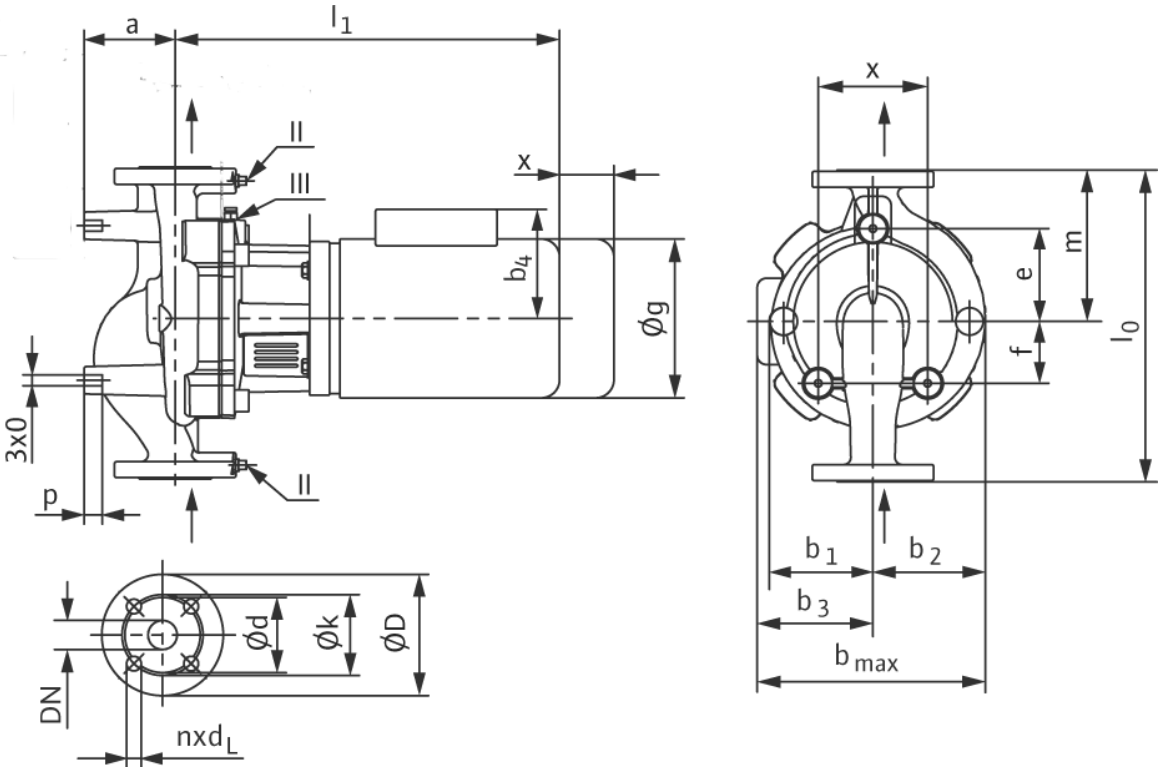
Pumpen Intelligenz.

Pump Dimensions IL 2.5-110/570-2

	l ₀	a	b ₁	b ₂	b ₃	b _{max}	c	e	f	g	l ₁	m	o	p	x	Wt
Inch	15	4 ¾	4 ¾	5 ½	8	13 ½	5 ½	4	2 ¾	10 ¾	25 ¾	7	½	¾	4 ¾	216 lbs
mm	381	120	112	134	201	335	140	100	60	259	652	178	½	20	120	98 kg

Pump Dimensions IL 2.5-85/480-2

	l ₀	a	b ₁	b ₂	b ₃	b _{max}	c	e	f	g	l ₁	m	o	p	x	Wt
Inch	15	4 ¾	4 ¾	5 ½	8	13 ½	5 ½	4	2 ¾	10 ¾	24 ¾	7	½	¾	4 ¾	216 lbs
mm	381	120	112	134	201	335	140	100	60	259	626	178	½	20	120	95 kg



Flange Dimensions: 2.5" 125 # ANSI (250 # Optional)

Baldor Motor Information

Details	Flange	D	d	k (BCD)	n x dL
Imperial	2 1/2"	4 5/16	4 15/16	5 1/2	4 x 3/4
Metric	65 mm	110	126	140	4 x 19

Hp/kw	Volt	Ph	FLA
15 Hp (11.2 kw)	208 - 230 / 460 / 575	3	37 - 35 / 17.5 / 14.5
10 Hp (7.5 kw)	208 - 230 / 460 / 575	3	25.6 - 23.2 / 11.6 / 9.6

Wilo USA LLC
 1290 North 25th Avenue
 Melrose Park, Illinois 60160
 Phone: 866 945 6872

Fax: 708 338 9455

Phone: 866 945 6236

Wilo Canada Inc
 Bay 7 - 2915 - 10th Ave N. E.
 Calgary, Alberta, T2A 5L4
 Fax: 403 277 9456

Literature Number SD-IL 2.5-100/570 & 85/480-2-0708



WILO IL Submittal

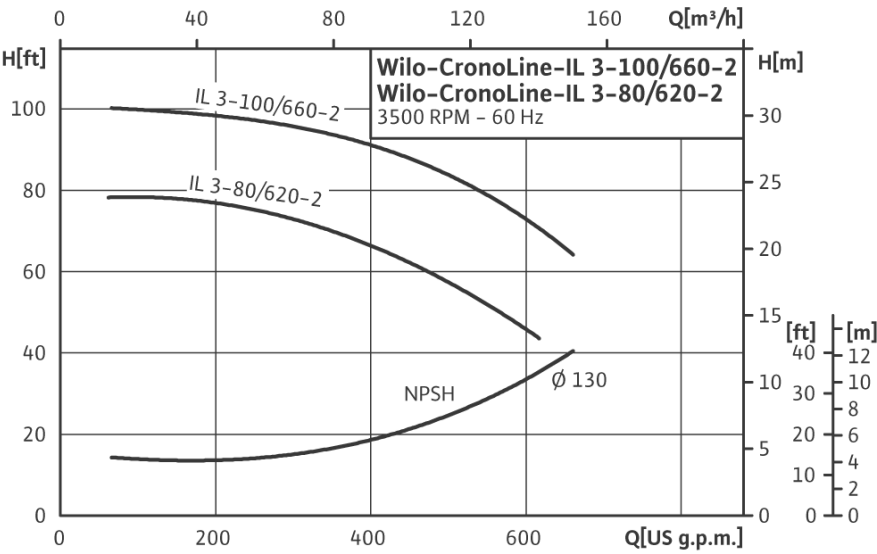
IL 3.0-100/660-2 & IL 3.0-80/620-2



Pumpen Intelligenz.

Project:	
Engineer:	
Contractor:	
Submitted By:	Date:
Approved By:	Date:

Tag #	Model #	Flow	Head	Hp	Volt/Phase	Motor Enclosure	RPM
	IL 3.0 - 100 / 660 - 2			15			3,500 (2 Pole)
	IL 3.0 - 80 / 620 - 2			10			3,500 (2 Pole)

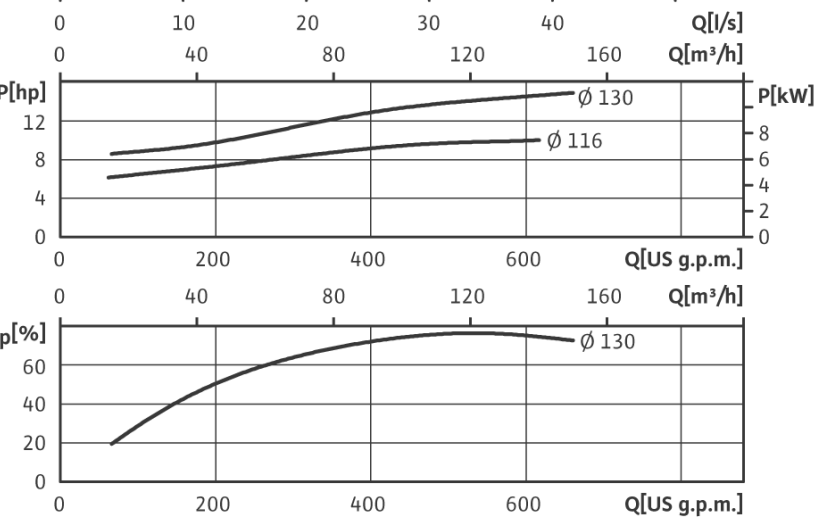


Applications

- Max Temp: 20 to 250 Deg F (- 4 to 120 Deg C)
285 Deg F (140 Deg C) optional seal
- Max Ambient Temp 104 Deg F (40 Deg C)
- Max Working Press 175 PSI (12 Bar)
250 PSI (17 Bar) on request
- Fluids: Water or Water/Glycol to 50%
Other Fluids - Contact WILO

Materials of Construction

- Impeller Cast Bronze
- Cast Iron (optional)
- Shaft 316L Stainless Steel
- Volute Cast Iron (Cataphoresis Coated)
- Seal (Std) Silicium Carbide on Silicium Carbide
HNBR Elastomer
CrNiMo Spring



Approval Stamp Here

Wilo USA LLC
1290 North 25th Avenue
Melrose Park, Illinois 60160
Phone: 866 945 6872

Fax: 708 338 9455

www.wilo-na.com

Phone: 866 945 6236

Wilo Canada Inc
Bay 7 - 2915 - 10th Ave N. E.
Calgary, Alberta, T2A 5L4
Fax: 403 277 9456

Literature Number SD-IL 3.0-100/660 & 80/620-2-0708



WILO IL Submittal

IL 3.0-100/660-2 & IL 3.0-80/620-2



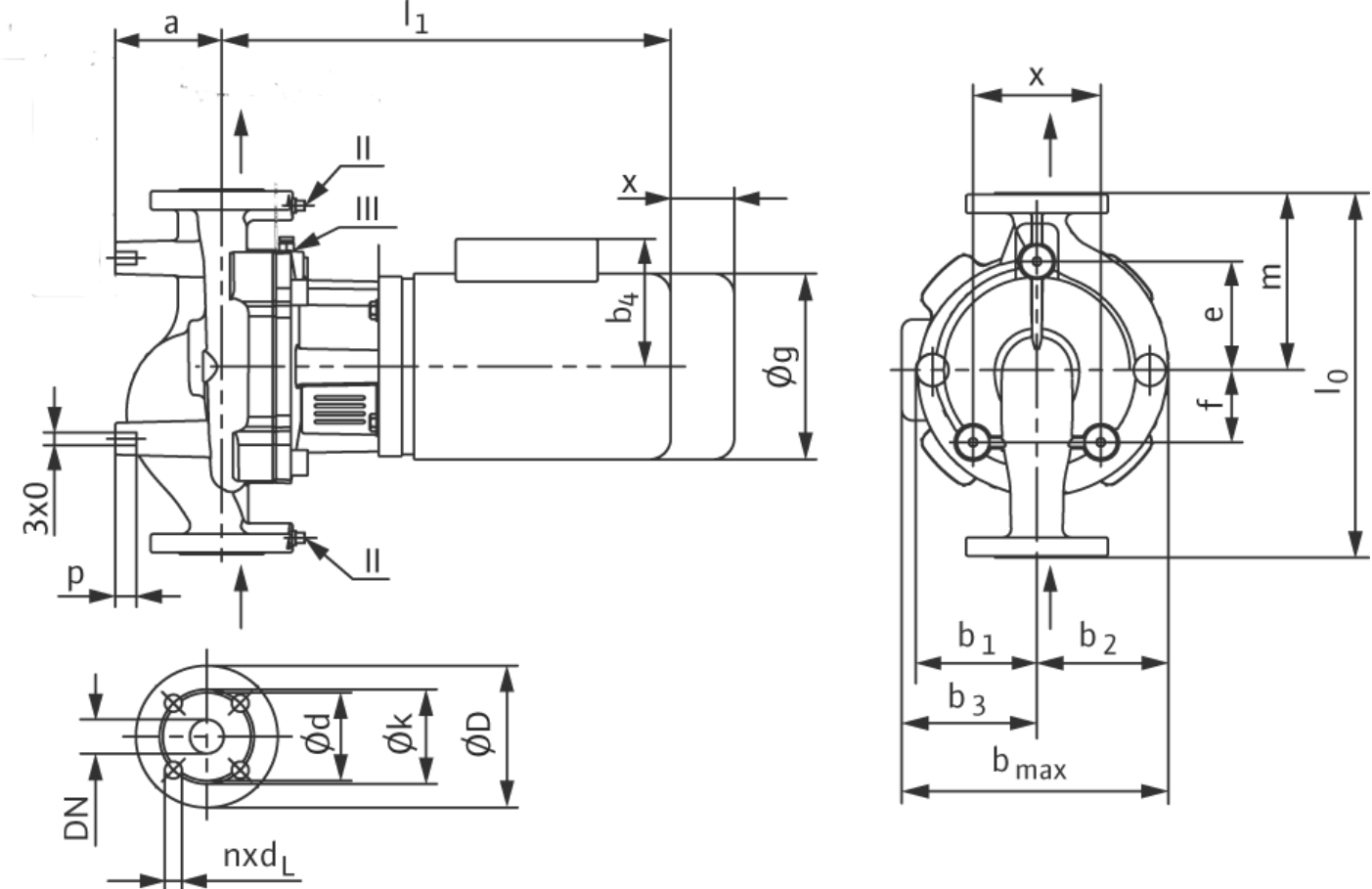
Pumpen Intelligenz.

Pump Dimensions IL 3.0-100/660-2

Dimensions	l ₀	a	b ₁	b ₂	b ₃	b _{max}	c	e	f	g	l ₁	m	o	p	x	Weight
Inches	17 ½	4 ¼	4 ⅞	6	8	14	7	5 ½	2 ¼	10 ¼	25 ⅜	8 ⅞	½	¾	4 ⅞	238 lbs
mm	445	108	123	151	201	352	180	140	57	259	643	220	½	20	120	108 kg

Pump Dimensions IL 3.0-80/620-2

Dimensions	l ₀	a	b ₁	b ₂	b ₃	b _{max}	c	e	f	g	l ₁	m	o	p	x	Weight
Inches	17 ½	4 ¼	4 ⅞	6	8	14	7	5 ½	2 ¼	10 ¼	26 ⅜	8 ⅞	½	¾	4 ⅞	232 lbs
mm	445	108	123	151	201	352	180	140	57	259	643	220	½	20	120	105 kg



Flange Dimensions: 3" 125 # ANSI (3" 250 # Optional)

Details	Flange	D	d	k (BCD)	n x dL
Imperial	3"	8 1/4	5 11/16	6	4 x 3/4
Metric	80 mm	210	145	152	4 x 19

Baldor Motor Information

Hp/kw	Volt	Ph	FLA
15 Hp (11.2 kw)	208 - 230 / 460 / 575	3	37 - 35 / 17.5 / 14.5
10 Hp (7.5 kw)	208 - 230 / 460 / 575	3	25.6 - 23.2 / 11.6 / 9.6

Wilo USA LLC
 1290 North 25th Avenue
 Melrose Park, Illinois 60160
 Phone: 866 945 6872

Fax: 708 338 9455

Phone: 866 945 6236

Wilo Canada Inc
 Bay 7 - 2915 - 10th Ave N. E.
 Calgary, Alberta, T2A 5L4
 Fax: 403 277 9456

Literature Number SD-IL 3.0-100/660 & 80/620-2-0708



WILO IL Submittal

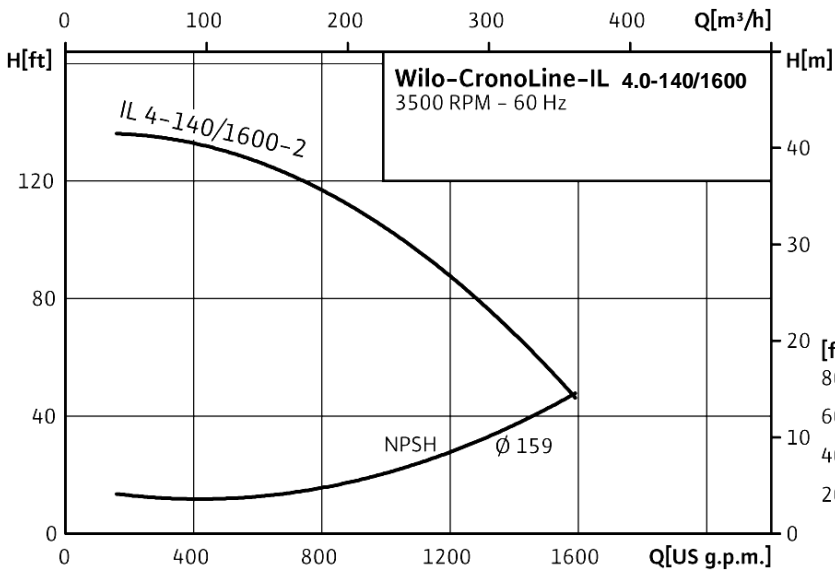
IL 4.0-140/1600-2



Pumpen Intelligenz.

Project:	
Engineer:	
Contractor:	
Submitted By:	Date:
Approved By:	Date:

Tag #	Model #	Flow	Head	Hp	Volt/Phase	Motor Enclosure	RPM
	IL 4.0 - 140 / 1600 - 4			40			3,500 (2 Pole)

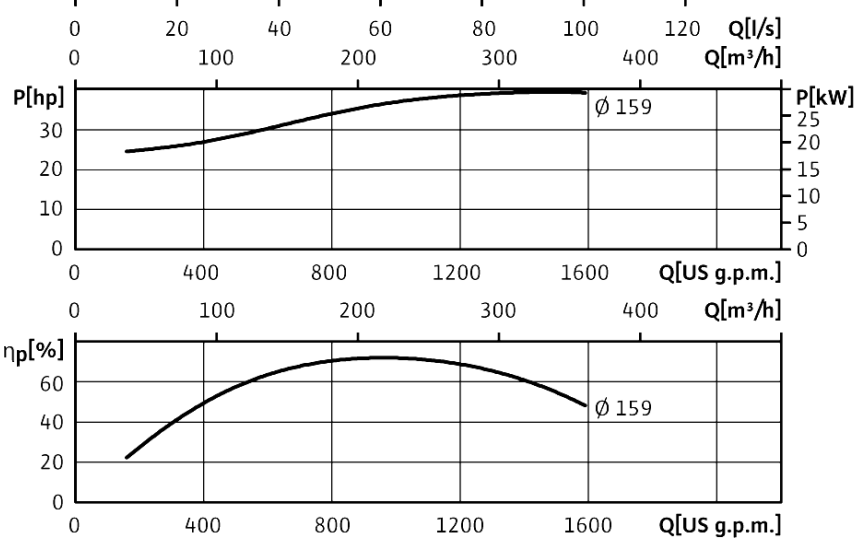


Applications

- Max Temp: 20 to 250 Deg F (- 4 to 120 Deg C)
285 Deg F (140 Deg C) optional seal
- Max Ambient Temp 104 Deg F (40 Deg C)
- Max Working Press 175 PSI (12 Bar)
250 PSI (17 Bar) on request
- Fluids: Water or Water/Glycol to 50%
Other Fluids - Contact WILO

Materials of Construction

- Impeller Cast Bronze
- Cast Iron (optional)
- Shaft 316L Stainless Steel
- Volute Cast Iron (Cataphoresis Coated)
- Seal (Std) Silicium Carbide on Silicium Carbide
HNBR Elastomer
CrNiMo Spring



Approval Stamp Here

Wilo USA LLC
1290 North 25th Avenue
Melrose Park, Illinois 60160
Phone: 866 945 6872

Fax: 708 338 9455

www.wilo-na.com

Phone: 866 945 6236

Wilo Canada Inc
Bay 7 - 2915 - 10th Ave N. E.
Calgary, Alberta, T2A 5L4
Fax: 403 277 9456

Literature Number SD-IL 4-140/1600-2-0708



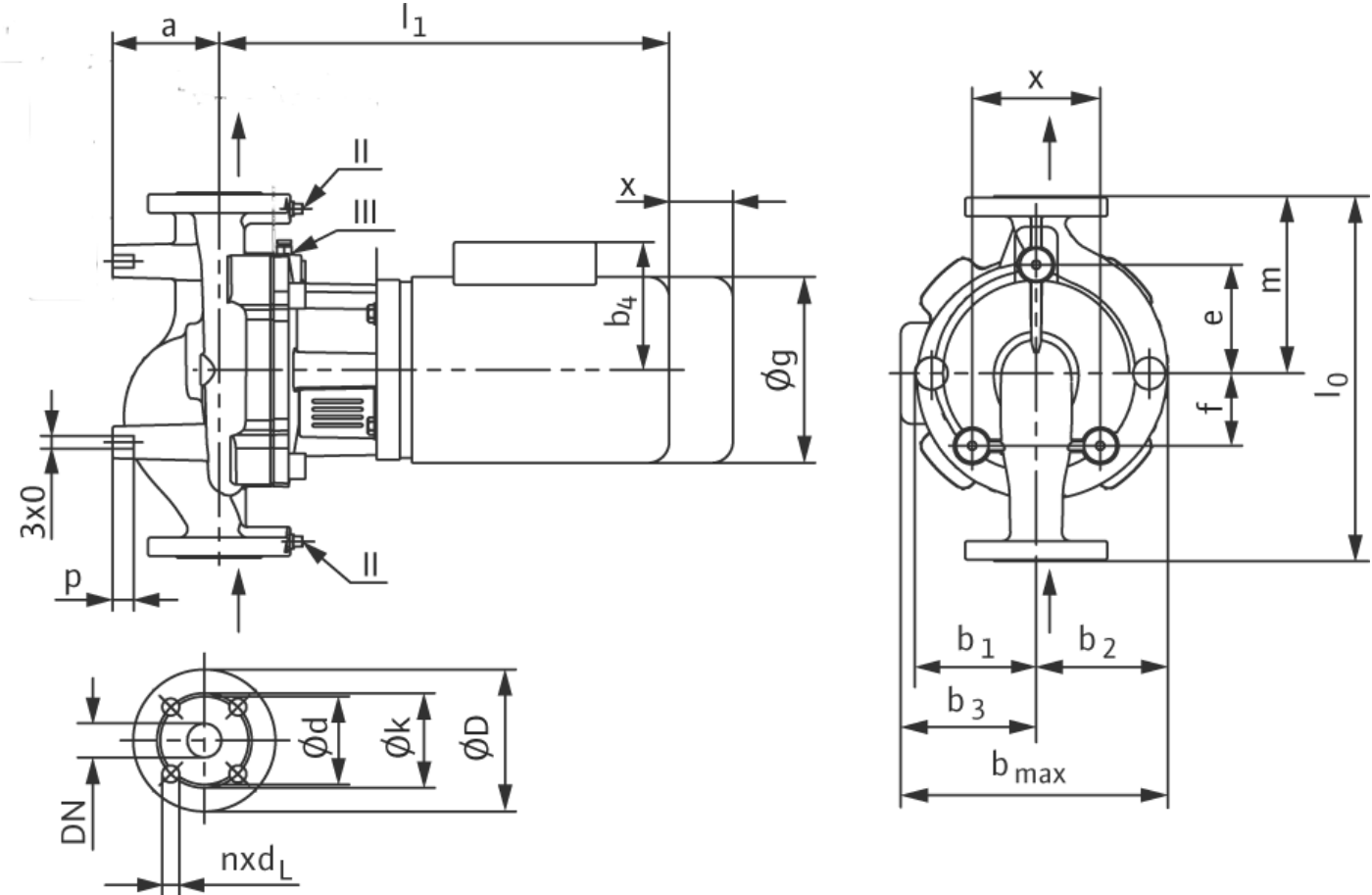
WILO IL Submittal IL 4.0-140/1600-2



Pumpen Intelligenz.

Pump Dimensions

Dimensions	l ₀	a	b ₁	b ₂	b ₃	b _{max}	c	e	f	g	l ₁	m	o	p	x	Weight
Inches	20 ½	5 ⅞	6 ¼	7 ¾	11 ¼	19	7 ⅞	9 ¼	2 ⅜	11 ½	31 ¾	10 ⅞	½	¾	5 ⅜	450 lbs
mm	521	132	158	196	285	481	200	234	60	293	805	262	½	20	135	203 kg



Flange Dimensions: 4" 125 # ANSI (250 # Optional)

Baldor Motor Information

Details	Flange	D	d	k (BCD)	n x d _L
Imperial	4"	10	7	7 1/2	8 x 3/4
Metric	100 mm	254	176	191	8 x 19

Hp/kw	Volt	Phase	Full Load Amps
40 Hp (32 kw)	208 - 230/460/575	3	92 / 46 / 36

Wilo USA LLC
1290 North 25th Avenue
Melrose Park, Illinois 60160
Phone: 866 945 6872

Fax: 708 338 9455

Wilo Canada Inc
Bay 7 - 2915 - 10th Ave N. E.
Calgary, Alberta, T2A 5L4
Phone: 866 945 6236

Fax: 403 277 9456

Literature Number SD-IL 4-140/1600-2-0708