



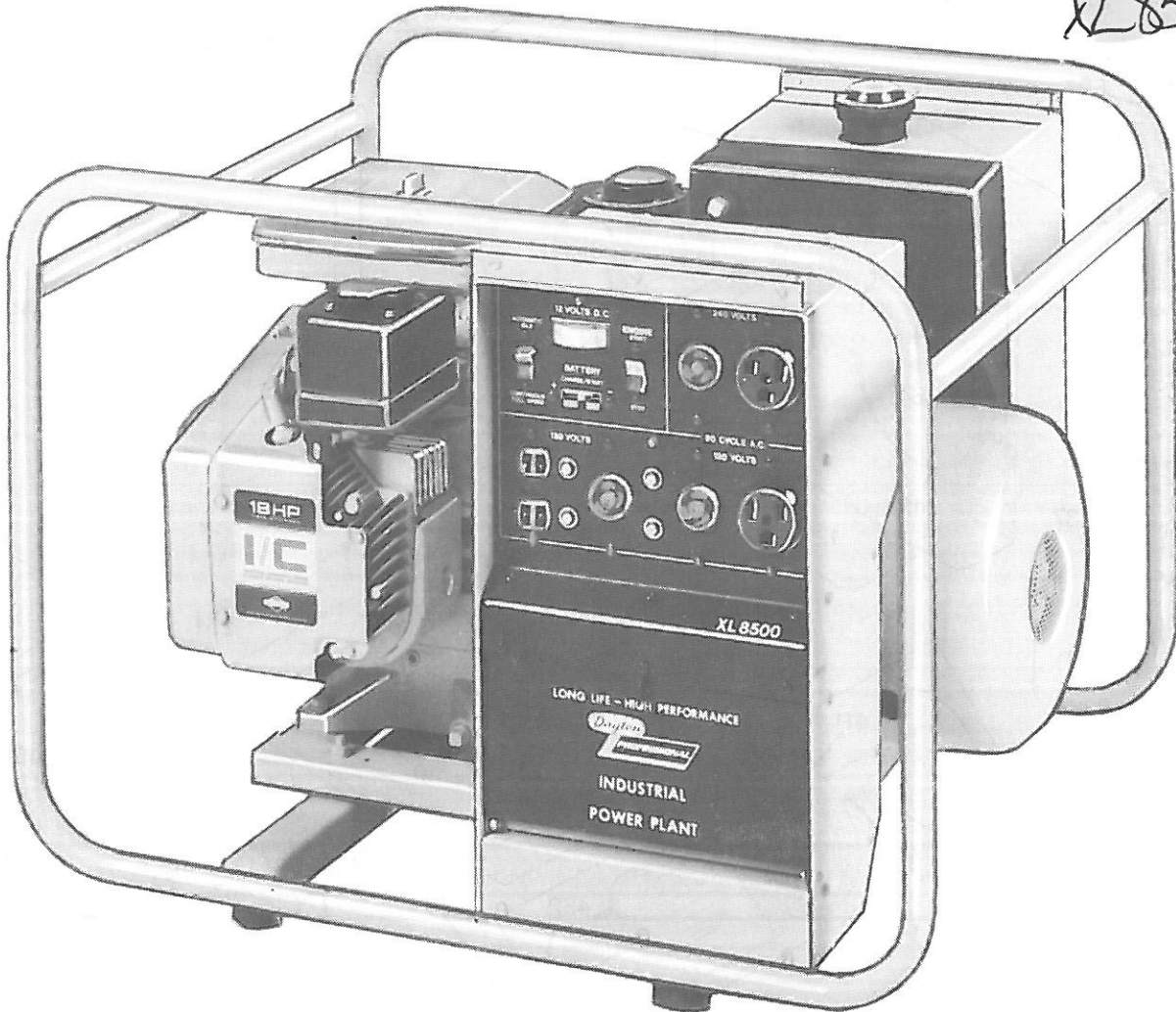
REPLACEMENT PARTS LIST
PORTABLE GENERATOR
 MODEL 3W017E

FORM
 5S1598
 03666

DAYTON ELECTRIC MANUFACTURING CO. CHICAGO 60648

0386/122/1M

SKW
XL8500



**ORDER REPLACEMENT PARTS THROUGH DEALER
 FROM WHOM PRODUCT WAS PURCHASED**

Please provide following information:

- Model Number
- Serial Number (if any)
- Part Description and Number as shown in parts list.

If dealer cannot supply,
 order from:
 Dayton Electric Mfg. Co.
 Parts Department
 5959 W. Howard St.
 Chicago, Illinois 60648

Figure 1

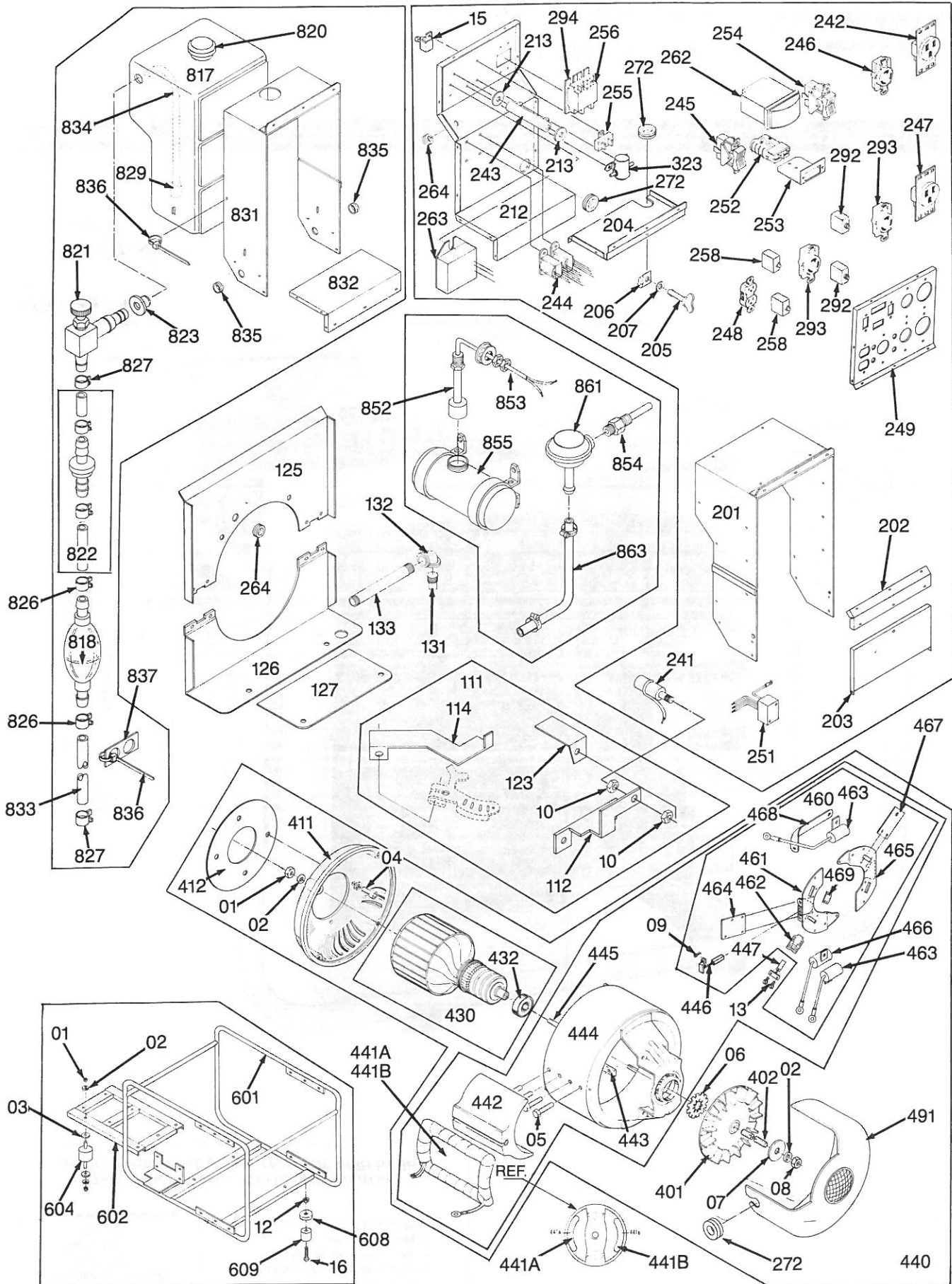


Figure 2 — Replacement Parts Illustration

Replacement Parts List

| REF. NO. | DESCRIPTION | PART NO. | QTY. | REF. NO. | DESCRIPTION | PART NO. | QTY. |
|----------|--|-----------|------|----------|--|-----------|------|
| 01 | Hex nut, 5/16-18 | 458 | 12 | 323 | Start solenoid | 24061 | 1 |
| 02 | Lockwasher, split, 5/16 | 480 | 17 | | | | |
| 03 | Washer, flat, 5/16 | 526 | 8 | 401 | Fan | 23404 | 1 |
| 04 | Allen head bolt, 7/16-14 x 3/4 | 62522 | 4 | 402 | Thru-bolt (5/16-24 x 127/8) | 23197-21 | 1 |
| 05 | Cap screw, hex head, 7/16-20 x 1 3/4 | 43781 | 8 | 411 | End bracket | 55493 | 1 |
| 06 | Lockwasher, internal tooth | 40552 | 1 | 412 | Air baffle | 63499 | 1 |
| 07 | Flatwasher, 5/16 | 23558 | 1 | 430 | Armature & bearing assy | 63282 | 1 |
| 08 | Hex nut, 5/16-24 | 23605 | 1 | 432 | Bearing | 50215 | 1 |
| 09 | Machine screw, 10-24 x 3/8 | 4637 | 4 | 440 | Field shell & coil assy, less brushes | 61030-2 | 1 |
| 10 | Jam nut, hex, 5/16-18 | 44894 | 1 | 441A | Field coil assy (LH) | 55359 | 1 |
| 12 | Hex nut, self-locking, 1/4-20 | 47517 | 4 | 441B | Field coil assy (RH) | 55359-1 | 1 |
| 13 | Machine screw, 8-32 x 5/16 | 40746 | 18 | 442 | Pole shoe assy | 43473 | 2 |
| 15 | Ground lug | 48042 | 1 | 443 | Pole shoe retainer | 43474 | 2 |
| 16 | Machine screw, rd. hd., 1/4-20 x 1 3/4 | 20667-1 | 4 | 444 | Field shell & bracket assy | 63602 | 1 |
| | | | | 445 | Stud | 51434 | 4 |
| | | | | 446 | Brush assy, DC | 47683 | 2 |
| 111 | Conservor parts | Ref. Only | 1 | 447 | Brush assy, AC | 55536 | 9 |
| 112 | Mounting bracket, conservor | 63646 | 1 | 460 | Brush rack assy (LH), less brushes | 63603 | 1 |
| 114 | Lever, conservor | 63647 | 1 | △ | Brush rack assy (RH), less brushes | 63603-1 | 1 |
| 123 | Cover | 44891-1 | 1 | 461 | Mounting plate, LH | 47684 | 1 |
| 125 | Air deflector assembly, top | 63625 | 1 | 462 | Brush holder | 59690 | 9 |
| 126 | Air deflector, bottom | 63618 | 1 | 463 | Capacitor, AC | 41221 | 2 |
| 127 | Air deflector, front | 63617 | 1 | 464 | Module bracket | 50237 | 1 |
| 131 | Oil drain plug, supplied with engine | Ref. Only | 1 | 465 | Mounting plate, RH | 59847 | 1 |
| 132 | Elbow | 53196 | 1 | 466 | Capacitor, DC | 41180 | 1 |
| 133 | Pipe nipple, 4" | 53244-7 | 1 | 467 | Bracket | 62460 | 2 |
| | | | | 468 | Ground strap, copper | 41387-6 | 3 |
| | | | | 469 | Barrier spacer | 59688 | 11 |
| | | | | 491 | End cover assembly | 55438-14 | 1 |
| 201 | Control box cover assy | 63506 | 1 | 601 | Cradle assy | 63522 | 1 |
| 202 | Lower front panel | 63497 | 1 | 602 | Subframe assembly | 63524 | 1 |
| 203 | Door | 63498 | 1 | 604 | Shock mount | 23623 | 4 |
| 204 | Divider | 63502 | 1 | 608 | Cap | 21077 | 4 |
| 205 | Stud, 1/4 turn | 91682 | 1 | 609 | Foot | 20191 | 4 |
| 206 | Clip | 91683 | 1 | | | | |
| 207 | Retainer ring | 91684 | 1 | | | | |
| △ | Battery cable assy | 62499 | 1 | 800 | Fuel system assy | Ref. Only | 1 |
| 212 | Back panel | 63501 | 1 | 817 | Fuel tank | 63439 | 1 |
| 213 | Fiber washer | 1376 | 2 | 818 | Primer | 62391 | 1 |
| 241 | Electromagnet | 44889 | 1 | 820 | Fuel tank cap/gauge | 62396-2 | 1 |
| 242 | Receptacle, NEMA 6-50R | 57325 | 1 | 821 | Elbow/shut off valve | 63467 | 1 |
| 243 | Resistor | 80132-3 | 1 | 822 | Fuel filter assy, supplied with engine | Ref. Only | 1 |
| 244 | Transformer | 40450 | 2 | 823 | Bushing | 62409 | 1 |
| 245 | Switch, conservor | 62392 | 1 | 826 | Clamp, primer | 62999-2 | 2 |
| 246 | Receptacle, NEMA L6-50R | 56281 | 1 | 827 | Clamp, hose | 62999-1 | 2 |
| 247 | Receptacle, NEMA 5-50R | 54545 | 1 | 829 | Fuel pickup | 63465 | 1 |
| 248 | Receptacle, NEMA 5-15R | 24749 | 1 | 831 | Fuel tank cover assembly | 63512-1 | 1 |
| 249 | Control panel (bare) | 63496 | 1 | 832 | Fuel tank base | 63509 | 1 |
| 251 | Conservor module | 48574 | 1 | 833 | Hose, 1/4 I.D. x 52 3/4" | 40078 | 1 |
| 252 | Receptacle, DC | 56148 | 1 | 834 | Hose, fuel tank, 1/4 I.D. x 20" | 63466 | 1 |
| 253 | Bracket, DC receptacle | 62051 | 1 | 835 | Grommet, fuel line | 23917 | 2 |
| 254 | Switch, start/stop | 62393 | 1 | 836 | Tie wrap | 49975-10 | 6 |
| 255 | Circuit breaker | 91940 | 1 | 837 | Hose tie down | 63616 | 6 |
| 256 | Circuit breaker, 35 amp, 240V | 57030-3 | 1 | 852 | Float switch | 63525 | 1 |
| 258 | Circuit breaker, 15A | 63661 | 2 | 853 | Nut, self-locking | 63626 | 1 |
| 262 | DC Ammeter W/Mtg. clip, 0-15 amp | 62394 | 1 | 854 | Probe | 63526-1 | 1 |
| 263 | Module (supplied with engine) | Ref. Only | 1 | 855 | Tank assy | 56109 | 1 |
| 264 | Grommet, module wire | 21418 | 2 | 861 | Pumping unit | 53603 | 1 |
| 272 | Grommet | 62486 | 3 | 863 | Hose assy, 3/8 x 16" (Incl. with tank) | 53604 | 1 |
| 292 | Circuit breaker, 120V, 20A | 63661-1 | 2 | △ | Engine (Briggs & Stratton Model 422436 Type 0740-01) | † | 1 |
| 293 | Receptacle, NEMA L5-20R | 56279 | 2 | | | | |
| 294 | Circuit breaker, 240V, 20A | 57030-1 | 1 | | | | |

8
1502

Cap
561095

*Standard hardware item, available locally.
 △Not shown.
 †Engine and engine parts available from engine manufacturer.

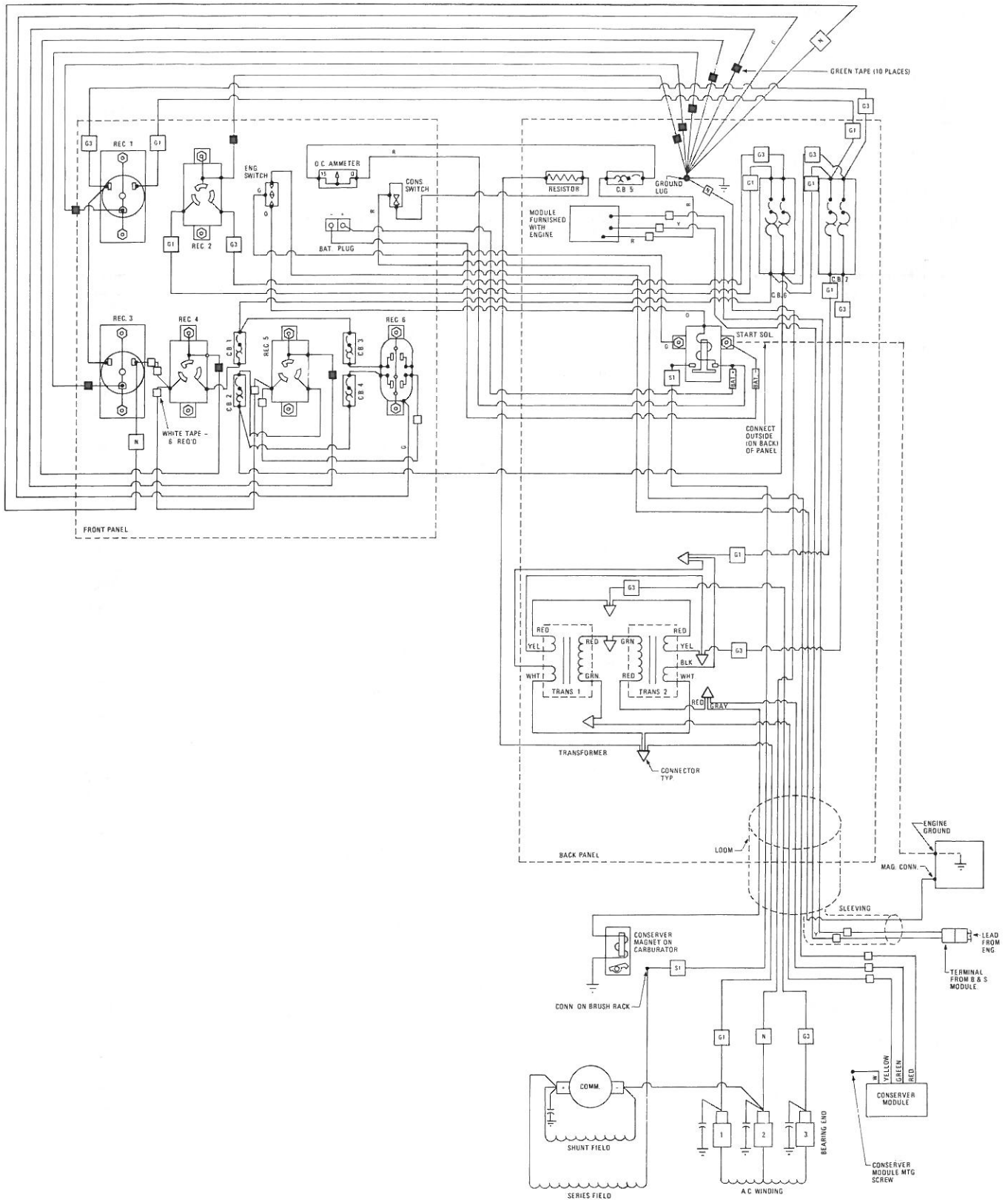


Figure 3 — Wiring Diagram