



WARNING

Attentions:

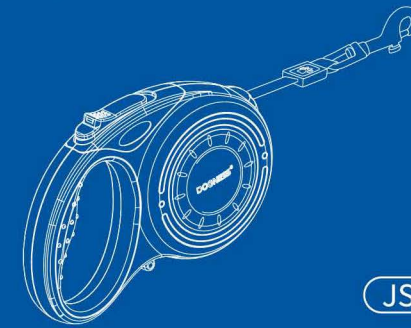
1. The user of Dogness retractable leash must be authorized to pull the dog and is familiar with operating instruction of the product and how to control the dog, he/she should keep an eye on the dog's movement at any time. Child ren and children who are not qualified with the above conditions are not allowed to use the Dogness retractable leash.
2. Carefully check all parts of the retractable leash before use. If you find any damage or wear, do not continue to use it. Sharp blade or similar sharp edge, dog chewing will lead to a breaking of the webbing. Attention: Even the high quality materials will finally lead to a malfunction due to longtime of regular wear and tear.
3. Please use dog collar when using retractable leash.
4. Do not hold the webbing directly, or you will be injured, Attention, be careful not to let the webbing wrap around any part of the body, the webbing may cause cuts or burns, knots of the webbing should be released in time; when walking with a dog, be careful to lock the webbing to a safe length in places when there are people or cars to avoid accidents.
5. Put it in places beyond the touch of child ren
6. Please do not press down the brake button when the dog suddenly run away to avoid damage to the internal mechanism.
7. It can only be used when walking, and cannot be used when riding a bicycle.

Maintenance:

1. Clean it with neutral shampoo, retract the webbing after it is completely dry. Water flushing to clean the product may lead to a malfunction and is not recommended.
2. Do not use any liquids such as gasoline, diluent and alcohol to clean or touch the product.



SIMPLIFY PET LIFESTYLE



JS04

SMART RETRACTABLE LEASH INSTRUCTION

Entrusting Party: Dogness Group LLC
 Address of Entrusting Party: 4116 W Spring Creek Parkway, Plano, TX 75024
 Manufacturer: Jiasheng Enterprise Co., Ltd.
 Address of Manufacturer: Tongsha New Industry Zone, Tongsha Community, Dongcheng Street of Dongguan City, Guangdong Province, 523127 China

Website: www.dognessgroup.com

Size			Dog weight (kg)	Min Pulling Strength
S	3m	L14.9*W10.5*H2.9 [2] cm	25lbs [12kg]	100lbs [48kg]
M	4m	L15.2*W10.5*H3.2 [2] cm	55lbs [25kg]	220lbs [100kg]
L	5m	L17.1*W12.6*H3.6 [2.4] cm	90lbs [42kg]	360lbs [168kg]
XL	6m	L18.3*W13.2*H4.2 [2.5] cm	120lbs [55kg]	480lbs [220kg]

Key Features:

1. Patents: design patent on shape, bone outlet and switch mechanism.
2. Switch mechanism: reliable switch mechanism, safe and easy to control, built-in metal brake part to ensure safety after locking.
3. High-quality spring: JS-04 adopts stainless steel spring with advanced processing technology to ensure more than 50000 times of extension and retraction.
4. Shock-proof cushion: PVC shock-proof cushion to decrease the retraction strength efficiently.
5. TPE handle: ergonomic design and comfort touch.
6. Product color: Bright red, Lavender purple, DOGNESS, Forest green, Romantic pink.
7. Easy-changed accessories: bluetooth speaker, LED light, Convenience box.
8. 3m/S cannot be used to install accessories

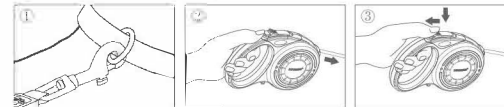


Convenience box

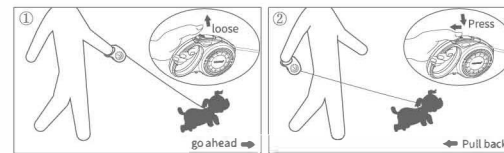
LED light

Bluetooth speaker

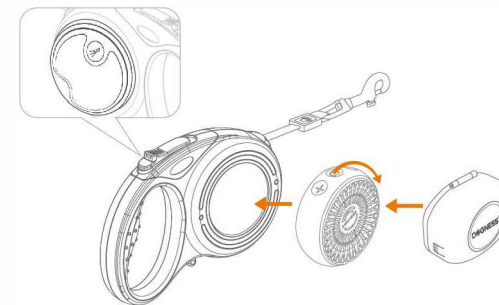
Operating Instruction:



1. Connect the lead clasp of the product to D ring of the Dog collar or Harness.
2. Grasp the handle of the product, and let the webbing extend from the product towards the dog moving direction, your dog can enjoy its freedom now.
3. Press the brake button to stop your dog running and limit its range of movement.



4. Dog recall: Firstly, release the brake button, make sure the webbing outlet is towards the dog, and the webbing will automatically retract to the product. Then press the brake button and pull your dog back. You can repeat these two steps until your dog come back.



5. Unscrew the left/right side-cover of the product, and you can easily attach your accessory to it.
 [Recommended position of accessory: 1. LED light, on the left of the product. 2. Bluetooth speaker or Convenience box, on the right of the product.]

FCC WARNING:

Changes or modifications not expressly approved by the party responsible for compliance could void the user's authority to operate the equipment.

This device complies with Part 15 of the FCC Rules. Operation is subject to the following two conditions: (1) this device may not cause harmful interference, and (2) this device must accept any interference received, including interference that may cause undesired operation.

This equipment has been tested and found to comply with the limits for a Class B digital device, pursuant to Part 15 of the FCC Rules. These limits are designed to provide reasonable protection against harmful interference in a residential installation. This equipment generates, uses and can radiate radio frequency energy and, if not installed and used in accordance with the instructions, may cause harmful interference to radio communications. However, there is no guarantee that interference will not occur in a particular installation.

If this equipment does cause harmful interference to radio or television reception, which can be determined by turning the equipment off and on, the user is encouraged to try to correct the interference by one or more of the following measures:

- Reorient or relocate the receiving antenna.
- Increase the separation between the equipment and receiver.
- Connect the equipment into an outlet on a circuit different from that to which the receiver is connected.
- Consult the dealer or an experienced radio/TV technician for help.

This device complies with FCC RF radiation exposure limits set forth for an uncontrolled environment. This transmitter must not be co-located or operating in conjunction with any other antenna or transmitter