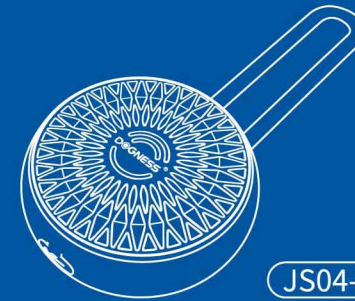


**Attentions:**

1. Do not place the stereo in the position of the airbag in the car, as it may cause serious injury when the airbag pops up.
2. Do not let children play with this product. Small parts of the products may cause suffocation to children.
3. Hospitals, blasting sites or potential explosive environments may require users to turn off electronic equipment and radio equipment.
4. Please turn off the bluetooth before boarding. Do not use this product during your flight in the plane.
5. In order to protect your hearing, do not turn the volume up too much.
6. Do not attempt to make any changes to the product.
7. Do not put this product in the wash basin or other damp places.
8. Do not clean the speaker when it is charged. Separate it from the charger before cleaning it up.
9. Do not attempt to disassemble the product, because it does not contain any maintenance components.
10. Do not dispose of the product in the fire because it will cause an explosion. Do not put it close to any sharp objects because it will cause scratches and damages.
11. This product does not have waterproof function, please use it indoors. If used outdoors, especially in a water environment, additional waterproof measures is necessary; otherwise it may lead to product malfunction, or even electric shock.
12. If you don't use the speaker for a long time, put it in a dry place and recharge it at least once a month to extend battery life and avoid extreme temperatures and dust.
13. Damaged package. Damaged appearance, incomplete accessories, or if any problems occur during use, please contact your distributor to replace the products, or return to the factory for repair. Do not attempt to open the product for self-repair. For any problems arising from improper operation, Dogness does not undertake warranty and compensation.



SIMPLIFY PET LIFESTYLE



**BLUETOOTH SPEAKER INSTRUCTION**

Entrusting Party: Dogness Group LLC  
 Address of Entrusting Party: 4116 W Spring Creek Parkway, Plano, TX 75024  
 Manufacturer: Jiasheng Enterprise Co., Ltd.  
 Address of Manufacturer: Tongsha New Industry Zone, Tongsha Community, Dongcheng Street of Dongguan City, Guangdong Province, 523127 China  
 Website: www.dognessgroup.com

**Name: Bluetooth speaker**

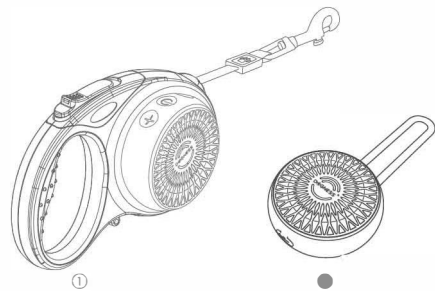
Size: L17.7 \* W7.64 \* H3.5cm

**Parameter:**

1. Standby time 15 day, continuous playback 4 hours.
2. Color of product: Bright red, Lavender purple, DOGNESS, Forest green, Romantic pink.

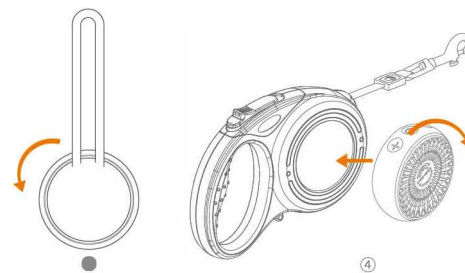
**function:**

1. Play music.
2. Call alert.
3. Can be used on the product or as a standalone speaker.

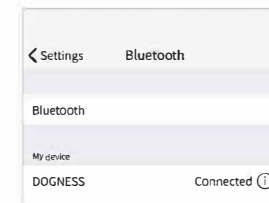


**Operating instruction:**

1. When it is used with retractable leash, remove the TPU handle of the bluetooth speaker and right side-cover of retractable leash, then screw the speaker on the retractable leash.



2. Press and hold on/off key for more than three seconds to turn on the speaker, and the indicator will light up.
3. When you turn on Bluetooth, your mobile phone will automatically detect the available devices.
4. When you see DOGNESS shown in the available devices of your cell phone, click it and it will take around 5-10 seconds to pair with it.
5. Choose the songs on your cell phone and play them.



6. When the phone connects to the bluetooth, the speaker will remind you in real time when there is a call.
7. If you don't use it for a long time after you turn it on, the Bluetooth stereo will turn off automatically.
8. Charging method: insert data cable into USB interface for charging.

蓝牙车载蓝牙喇叭  
 蓝牙车载蓝牙喇叭  
 蓝牙车载蓝牙喇叭  
 蓝牙车载蓝牙喇叭

FCC WARNING:

Changes or modifications not expressly approved by the party responsible for compliance could void the user's authority to operate the equipment.

This device complies with Part 15 of the FCC Rules. Operation is subject to the following two conditions: (1) this device may not cause harmful interference, and (2) this device must accept any interference received, including interference that may cause undesired operation.

This equipment has been tested and found to comply with the limits for a Class B digital device, pursuant to Part 15 of the FCC Rules. These limits are designed to provide reasonable protection against harmful interference in a residential installation. This equipment generates, uses and can radiate radio frequency energy and, if not installed and used in accordance with the instructions, may cause harmful interference to radio communications. However, there is no guarantee that interference will not occur in a particular installation.

If this equipment does cause harmful interference to radio or television reception, which can be determined by turning the equipment off and on, the user is encouraged to try to correct the interference by one or more of the following measures:

- Reorient or relocate the receiving antenna.
- Increase the separation between the equipment and receiver.
- Connect the equipment into an outlet on a circuit different from that to which the receiver is connected.
- Consult the dealer or an experienced radio/TV technician for help.

This device complies with FCC RF radiation exposure limits set forth for an uncontrolled environment. This transmitter must not be co-located or operating in conjunction with any other antenna or transmitter