



CP650 Digital Cinema Processor



The Dolby CP650 is the best investment you can make in a cinema processor.

The Dolby® CP650 is the only all-digital cinema processor capable of playing back both digital and analogue Dolby soundtrack formats. Its high quality, proven reliability, unrivaled versatility, and ease of setup have earned it a place in thousands of flagship cinemas worldwide. It can also accommodate new technologies such as digital cinema, ensuring a long and useful product life.

Five Configurations

The CP650's most popular configuration, simply designated CP650, processes Dolby SR and A-type analogue, Dolby Digital, and Dolby Digital Surround EX™ soundtracks. It also provides four AES3 inputs for digital cinema audio. To these features, the top-of-the-line CP650XO adds built-in crossovers for screen speakers, eliminating the need for a stand-alone crossover unit.

For tighter budgets, the CP650SR comes equipped to process Dolby SR and A-type analogue soundtracks only, while the CP650D adds Dolby Digital decoding; neither of these models includes Dolby Digital Surround EX decoding or digital audio inputs. However, as your needs change and new formats are introduced, you can upgrade any CP650 configuration with plug-in circuit cards and new software.

For digital cinema installations that do not require replay of film sound tracks, the CP650DC provides digital audio inputs for connection to a digital cinema server whilst removing the additional cost of 35mm support.

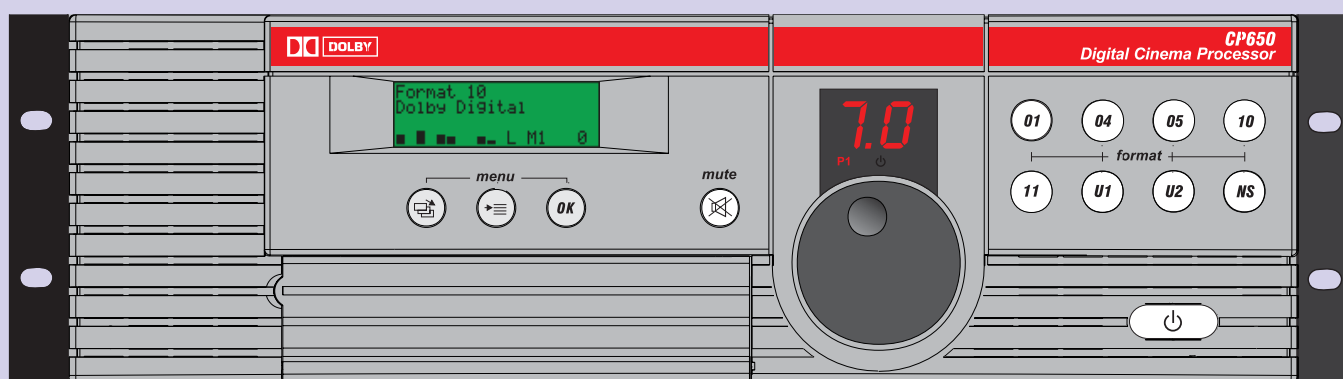
Exceptional Features

Built-in installation tools (including a real-time analyzer and the unique EQ Assist™ system) significantly reduce alignment time. In day-to-day operation, the Auditorium Assist™ feature can alert you to discrepancies from the sound system's initial calibration, signaling a fault such as a speaker driver failure.

The CP650 is most efficiently installed and calibrated with the help of a laptop PC running comprehensive setup software (available in several languages). Calibration can also be accomplished using the CP650's front-panel controls and main display. Software upgrades are conveniently accomplished from a PC.

A built-in Ethernet interface makes it possible to control and monitor the CP650 from a remote location – a head office hundreds of miles away from the cinema, for example.

Dolby CP650 Digital Cinema Processor



CP650 Front Panel

Setup Control Panel Access Door

Mic input level control
Bypass output level control
Test points
RS-232C port (9-pin female D-connector)
for PC connection
9-pin female D-connector, balanced, for a
microphone or microphone multiplexer;
phantom power available

Main Display

Shows current format signal level and
processor condition
Displays setup and calibration information
for use with menu buttons

Menu Buttons

Steps through menu pages
Selects parameters within a page (use main
fader knob for parameter choices)
Store settings

Mute Button

Mutes all audio outputs

Main Fader

Adjusts main audio output level

Fader Display

Shows fader setting, projector in use, bypass
power supply condition

Format Buttons

Preprogrammed and user defined audio
format control

Bypass Button

Selects main or bypass power supply
In the CP650DC, this acts as a power switch

Choosing Your CP650

The Dolby CP650 is available in a variety of
configurations to suit every projection
requirement.

In addition, upgrade kits are available that
allow new configurations as needed:

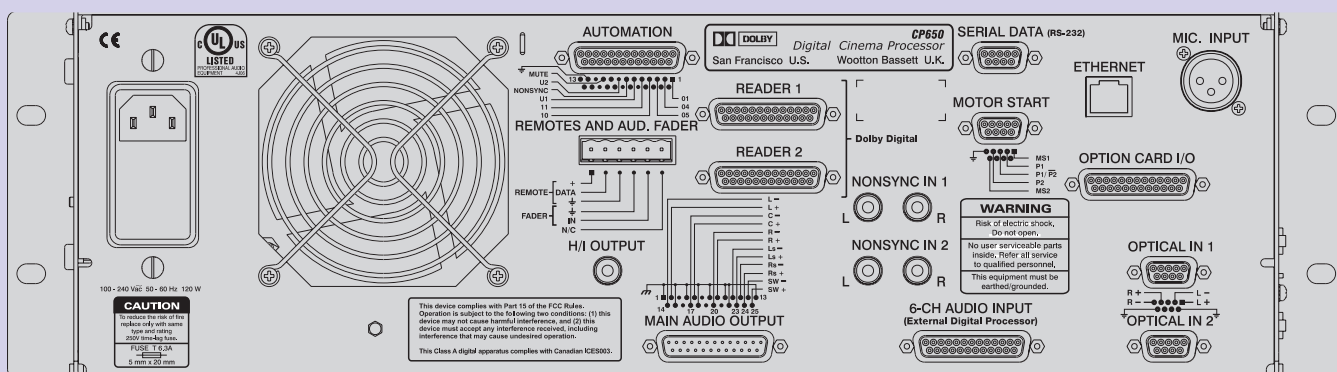
UD/650 – Upgrades the CP650SR to CP650D
(includes Cat. No. 773)

UEX/650 – Upgrades the CP650D to CP650
(includes Cat. No. 790)

UXO/650 – Upgrades the CP650 to CP650XO
(includes Cat. No. 791)

	CP650XO	CP650	CP650D	CP650SR	CP650DC
Dolby A-type analogue (2:4)*	•	•	•	•	
Dolby SR analogue (2:4)	•	•	•	•	
Dolby Digital, film sources	•	•	•		
Dolby Digital, non-film sources	•	•			•
Surround EX decoding	•	•			•
Screen speaker crossovers	•				
Le, Re support	•				
Four AES3 inputs (digital cinema audio)	•	•			•

*Four A-type processors provided for L, C, R, S on 70 mm mag prints (separate mag preamps required)



CP650 Rear Panel

Automation Connector

25-pin female D-connector for controlling and indicating format, fader select, projector status, and mute

Remote Unit/Fader Input

Terminal strip connector for

Dolby Cat. No. 779 remote control unit,
Dolby Cat. No. 771 remote fader, external
auditorium faders (100 kΩ linear
potentiometer)

Hearing Impaired Output

RCA-type female phono connector
Center-weighted sum of L, C, R
Output level: 200 mV fixed

Digital Reader Inputs*

25-pin female D-connectors for two
Dolby Digital readers

Main Audio Output

25-pin male D-connector, balanced or floating
Maximum level, balanced loads:
+26 dBu (15.5 V)

Maximum level, unbalanced loads:

+20 dBu (7.75 V)

Dolby level output adjust range:

–31 to –12 dBu (20–780 mV)

Option Card I/O

25-pin female D-connector for digital
bitstream input and surrounds output when
equipped with the Cat. No. 790 option card
L, C, R mid and high crossover outputs with
Cat. No. 791 option card

Nonsync Inputs

RCA-type female phono connectors for two
stereo nonsync sources
Input impedance: 21 kΩ
Sensitivity: 0.2–4 V (NS 1), 0.06–1.5 V (NS 2)

Six-Channel Audio Input

25-pin female D-connector for external
six-channel analogue source
Input impedance: 10 kΩ (L, R), 27 kΩ
(C, Ls, Rs, SW)
Operating level: 300 mV

RS-232C Serial Data Input Port

9-pin female D-connector to connect external
PC for setup and automation control

Ethernet Connector

RJ-45 female for automation control and
subtitling timing data

Motor Start*

9-pin female D-connector for Dolby Digital
reader motor start timing and projector
changeover

Microphone Input

XLR female connector, balanced, for
Auditorium Assist, PA, or B-chain alignment
mic (or multiplexer)
Phantom power available (+15 V)

Optical Inputs*

9-pin female D-connectors, balanced, for two
stereo solar cells or analogue LED readers
Power available for external cell preamp
circuits (±14 V/40 mA)

*Not included on CP650DC

Loudspeaker Equalization

L, C, R, Ls, Rs, Bsl, Bsr: digital 27-band,
1/3-octave

Le, Re (with optional Cat. No. 791):
digital 27-band, 1/3-octave
SW: Digital parametric

Distortion

Typically 0.005% in Dolby SR mode (output
–10 dBu, input 10 dB over Dolby level)

Dynamic Range

Typically 105 dB with fader set to 7

Power Requirements

100–120 and 200–240 VAC, 50–60 Hz,
100 W maximum (including built-in bypass
power supply where applicable)

Dimensions and Weight

3-U rackmount chassis; faceplate:
133 x 483 mm (5.25 x 19 inches)

Maximum projection behind equipment rack
rail: 365 mm (14.4 inches)

Maximum projection in front of mounting

plate: 38 mm (1.5 inches)

Net: 10.4 kg (23 lb)

Environmental Conditions

Operating: 0°C–40°C (32°F–104°F),
forced-air cooling, 20%–80% relative
humidity (noncondensing)

Regulatory Notices

North America: This unit complies with the
limits for a Class A digital device, pursuant to
Part 15 of the FCC rules, and Industry Canada
ICES-003 specifications. It is UL Listed for the
US and Canada.

Europe: This unit complies with the
requirements of Low Voltage Directive
3/23/EEC and EMC Directive 89/336/EEC
and carries the CE marking accordingly.

Warranty

One-year limited, parts and labour;
see disclaimer.

Disclaimer of Warranties

Equipment manufactured by Dolby Laboratories is warranted
against defects in materials and workmanship for a period of
one year from the date of purchase. There are no other
express or implied warranties and no warranty of
merchantability or fitness for a particular purpose, or of
noninfringement of third-party rights (including, but not
limited to, copyright and patent rights).

Limitation of Liability

It is understood and agreed that Dolby Laboratories' liability,
whether in contract, in tort, under any warranty, in
negligence, or otherwise, shall not exceed the cost of repair
or replacement of the defective components or accused
infringing devices, and under no circumstances shall Dolby
Laboratories be liable for incidental, special, direct, indirect,
or consequential damages, (including, but not limited to,
damage to software or recorded audio or visual material), cost
of defense, or loss of use, revenue, or profit, even if Dolby
Laboratories or its agents have been advised, orally or in
writing, of the possibility of such damages.

Key Upgrades and Options

Cat. No. 735 Auditorium Assist Microphone

The Dolby Cat. No. 735 microphone, mounted permanently and inconspicuously in the auditorium, works in conjunction with the Auditorium Assist feature provided in all CP650s to help you maintain consistently high performance from your cinema's sound system.

Once your room is initially aligned, Auditorium Assist uses the Cat. No. 735 to take measurements of the frequency response and level of each channel, plus the room's ambient noise floor, which are then stored within the CP650 as your Auditorium Reference. Thereafter, whenever you run Auditorium Assist, it takes the measurements again and compares them to the Auditorium Reference, all in less than 90 seconds. You are alerted to any discrepancies to help you diagnose and resolve faults that may have occurred in the speakers or other system components.



Cat. No. 790 Dolby Digital Surround EX/Digital Input Card

The Cat. No. 790 card, which is standard in the CP650, CP650DC, and CP650XO configurations, provides Surround EX decoding. It also provides four AES3 inputs that accommodate up to eight channels of digital audio (at 44.1 and 48 kHz) from sources such as digital cinema servers, disks, tape playback systems, and satellite or cable links.



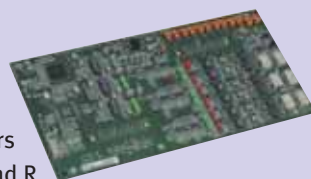
Cat. No. 778 Digital Input/Output Card (not shown)

For dubbing studios requiring digital input and output, the Cat. No. 778 Digital Input/Output Card can substitute for the Cat. No. 790 to provide four AES/EBU digital inputs and up to five AES/EBU digital outputs.

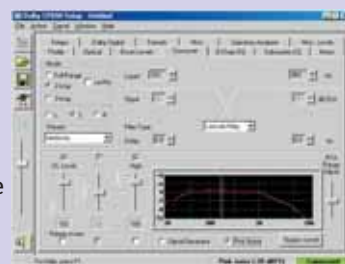
(The Cat. No. 778 disables the CP650's analogue output.)

Cat. No. 791 Digital Crossover Card

Cat. No. 791 Digital Crossover Card, which is standard in the CP650XO, integrates two- or three-way speaker crossovers into the CP650 for your L, C, and R screen speakers. It also provides outputs for full-range Le and Re screen speakers.



All audio processing is in the digital domain, enabling extensive settings and adjustments via a PC software package or built-in menus using the front-panel main display. As well as ensuring the highest possible performance from your screen speakers, the Cat. No. 791 eliminates the need for a stand-alone crossover unit.



(A Cat. No. 790 must be installed in the CP650 in order to add the Cat. No. 791.)

For additional information, contact info@dolby.co.uk.