

nyne

Nyne Cruiser

EN Bluetooth Speaker Series

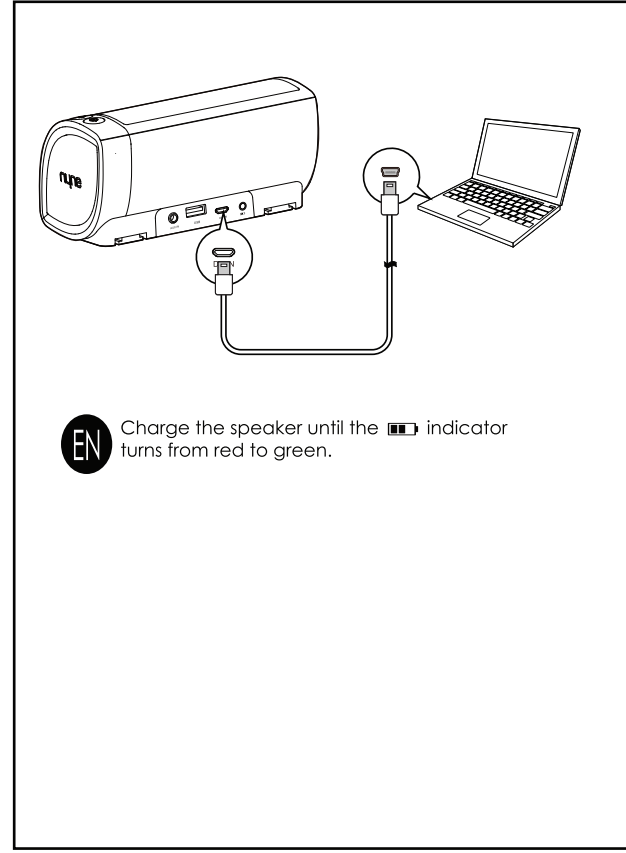
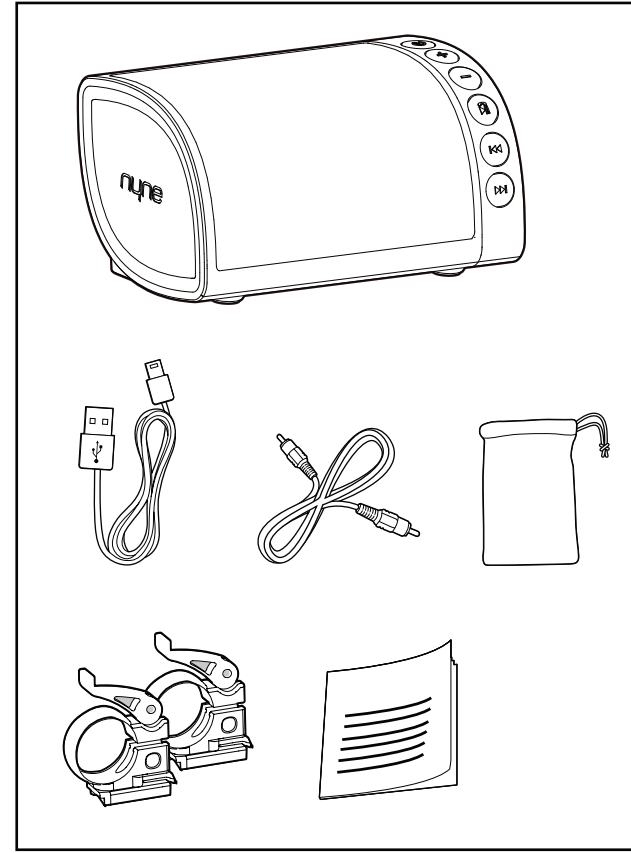
EN Quick User Guide

nyne.com

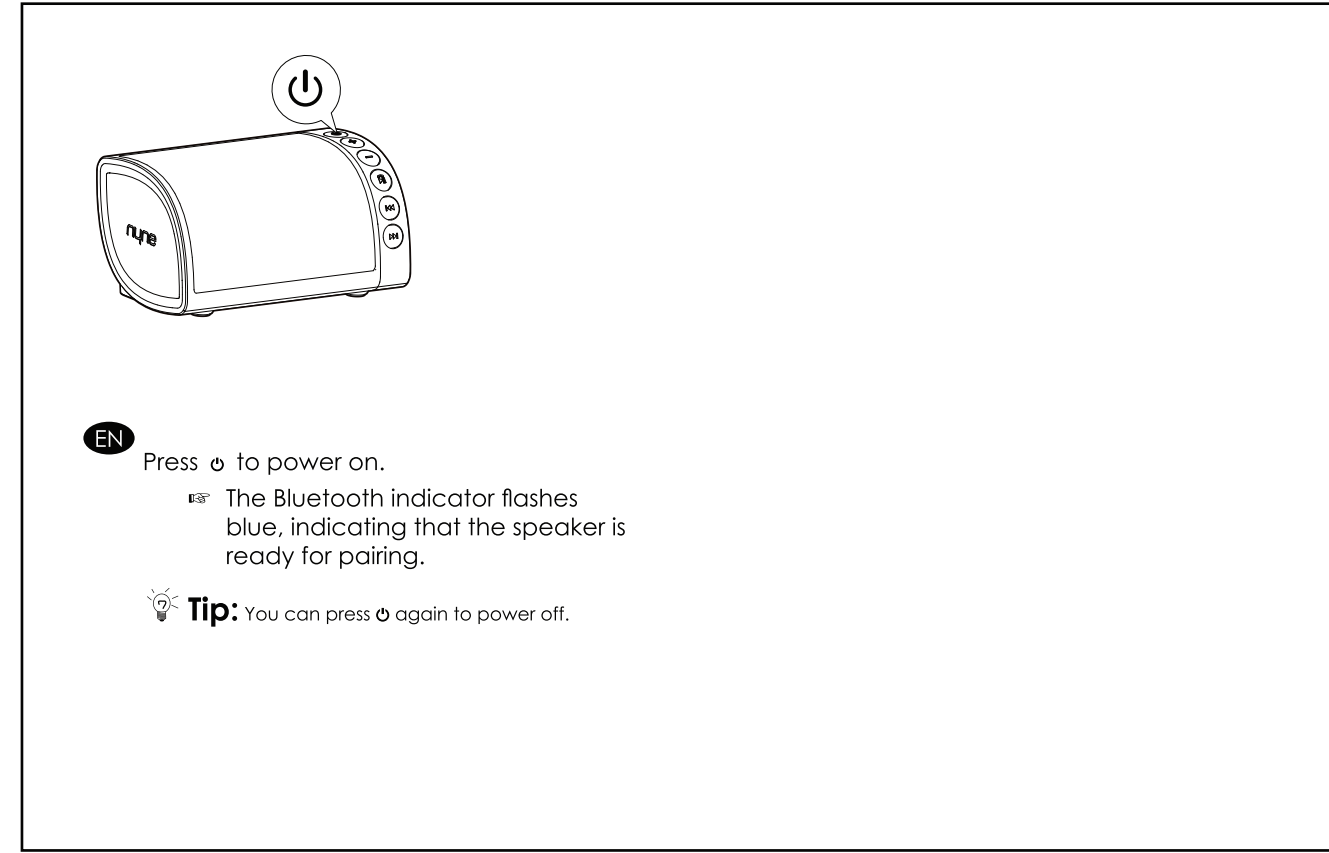
All registered and unregistered trademarks are property of their respective owners. Nyne Multimedia Inc. All rights reserved.

nyne

FCC Radiation Exposure Statement
This equipment complies with FCC radiation exposure limits set forth for an uncontrolled environment. This equipment should be installed and operated with minimum distance 20cm between the radiator & your body.

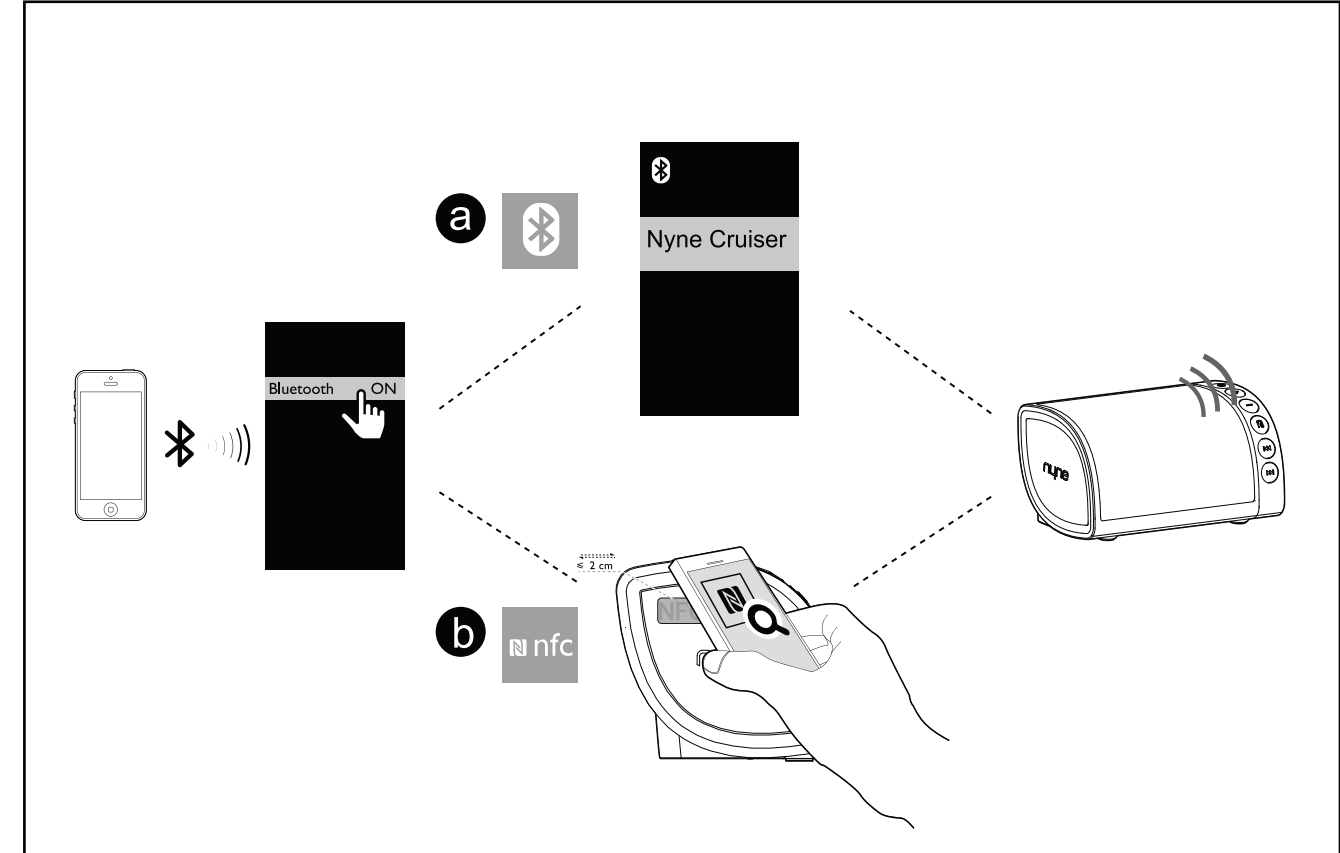


EN Charge the speaker until the indicator turns from red to green.



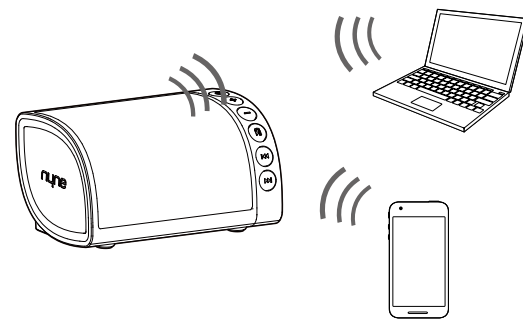
EN Press to power on.
 The Bluetooth indicator flashes blue, indicating that the speaker is ready for pairing.

Tip: You can press again to power off.



- EN (1) Enable Bluetooth on your device to be paired with the speaker.
(2) a. Select 'Nyne Cruiser' from the available devices (enter the password '0000' if necessary) to start pairing and connection with the speaker.
b. Enable NFC on your Bluetooth device, and then touch with the NFC area of the speaker.
(3) After successful connection, the Bluetooth indicator turns solid blue and the speaker beeps.

Tips: This speaker supports automatic connection with a previously paired device after power-off and power-on again.
You can press and hold for more than 2 seconds to enter manual pairing mode. In this way, you can pair the speaker with a new Bluetooth device.
You can press and hold for more than 10 seconds to clear all paired Bluetooth devices.

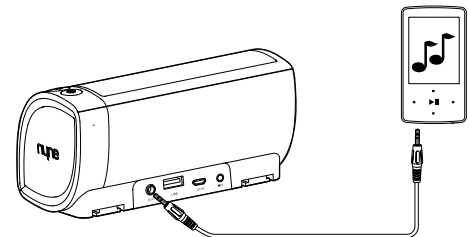


EN Play music on your device paired and connected with the speaker.

During music play:

- Press +/- to adjust volume.
- Press ◀/▶ to skip to the previous or next song.
- Press ⏸ to pause or resume music play.

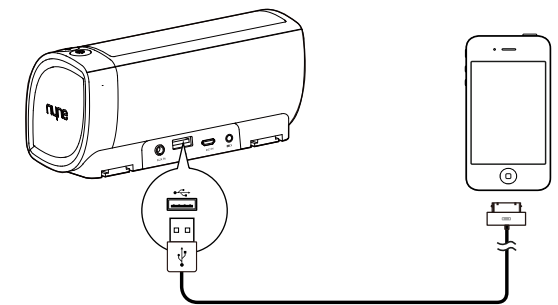
Tip: When you make a call or there is an incoming call, you can use the speaker as a speaker phone. Music play is paused during the call and resumed automatically when the call ends. During a call, you can press ⏹ to end the call.



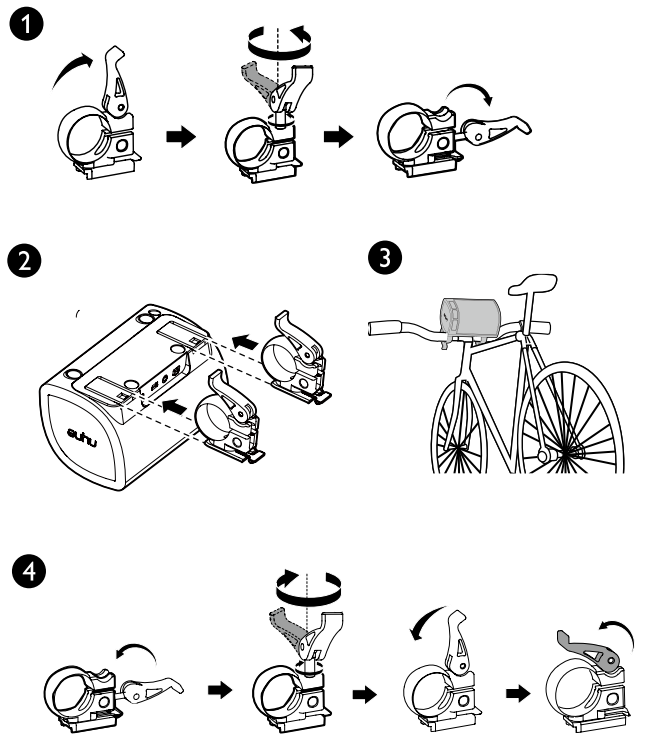
EN (1) Connect an auxiliary audio device to the speaker through the supplied 3.5mm audio cable.

(2) Play and control music on the audio device, and use +/- on the speaker to adjust volume if necessary.

Tip: When the 3.5mm audio cable is plugged, the speaker switches to AUX IN mode automatically. When it is unplugged, the speaker switches back to Bluetooth mode and sets up Bluetooth connection again.



EN Charge your mobile device through the 5V USB charging socket.

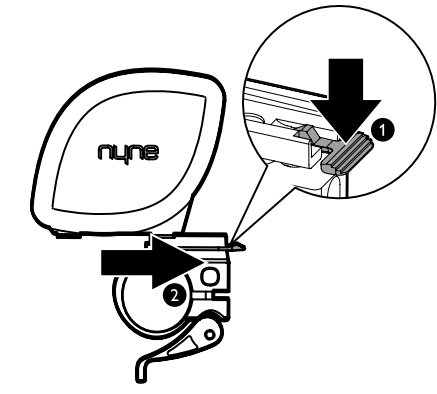


EN (1) Erect the screw handle on a handlebar mounting bracket and turn counterclockwise to loosen the screw but do not unscrew completely, until you can take the screw handle out from the dent on the clamp. Take the other one and repeat the procedures.

(2) Slide the brackets into rails at the bottom of the speaker until you hear a click.

(3) Pull both clamps outwards and hook the brackets onto the handlebar stem of your bicycle.

(4) Hold the screw handle to lift up the screw and turn clockwise to ensure tight fastening, then pull down the screw handles.



EN To detach the handlebar mounting bracket:

(1) Repeat the above step 1, and then detach the speaker from the handlebar stem on your bicycle.

(2) Hold the locker on each bracket and pull the brackets out from the rails one by one.



Nyne Cruiser

EN Bluetooth Speaker Series

EN Safety Guide

nyne.com **CE 2200**

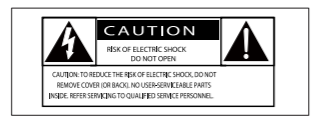
SG-Cruiser-10-4-2013-V. 1.0
All rights reserved.
Nyne Multimedia Inc.
of their respective owners.
All registered and unregistered trademarks are property.
Specifications are subject to change without notice.




EN

Important

Safety



 The lightning flash with arrowhead symbol within an equilateral triangle is intended to alert the user to the presence of un-isolated, dangerous voltage within the inside of the device that may be of sufficient magnitude to constitute a risk of electric shock to persons.

Warning: To reduce the risk of electric shock, do not remove cover (or back) as there are no user-serviceable parts inside. Refer servicing to qualified personnel.

 The exclamation point within an equilateral triangle is intended to alert the user to the presence of important operating and servicing instructions in the literature accompanying the device.

WARNING: To reduce the risk of fire or electric shock, do not expose this apparatus to rain or moisture. The apparatus shall not be exposed to dripping or splashing and that objects filled with liquids, such as vases, shall not be placed on apparatus.

WARNING: The battery (battery or batteries or battery pack) shall not be exposed to excessive heat such as sunshine, fire or the like.

Read these instructions before operation.

Keep these instructions for future reference.

Follow all instructions for installation, use and maintenance of the device.

To avoid tilt or drop, place the device on a flat and hard surface.

To clean the device, disconnect power first. Clean only with soft and dry cloth.

To ensure compatibility, only use accessories recommended by the manufacturer.

When the device is suddenly moved from cold to warm surroundings, condensation may form in the housing of the device. Before use, leave the device in the warm environment until the moisture evaporates.

Keep the device away from heat sources, such as a radiator, heater, oven, amplifier, naked flames or direct sunlight.

No naked flame sources, such as lighted candles, should be placed on the apparatus.

Never block any ventilation openings. Install in accordance with the manufacture's instructions.

- Do not expose the device to sand or dust, or cover it with items, such as newspapers, table cloths, or curtains.

- Do not operate the device in an enclosed cabinet. Leave sufficient free space around the device for adequate ventilation.

Do not attempt to repair or service the device yourself. Opening or removing the cabinet may expose you to electric shock, and other hazards. If repair is required, contact your dealer and refer all servicing to qualified service personnel.

Do not use the device if any abnormality occurs. If any smoke or odor becomes apparent, contact your dealer immediately. Do not try to repair the device yourself.

Avoid using dropped or damaged appliances. If the device is dropped and the housing is damaged, the internal components may not function normally. Stop use and contact your dealer for repair. Continued use of the device may cause fire or electric shock.

To reduce the risk of electric shock, do not touch any connector with wet hands.

Never remove the housing of the device.

Never lubricate any part of the device.

Never place the device on top of any other electrical equipment.



This equipment is a Class II or double insulated electrical appliance. It has been designed in such a way that it does not require a safety connection to electrical earth.

Notice

Modification

Any modification (such as removing the speaker grill) to the device, without prior authorization from the manufacturer, may void your warranty and authority to operate the device.

FCC compliance statement

This equipment has been tested and found to comply with the limits for a Class B digital device, pursuant to part 15 of the FCC Rules. These limits are designed to provide reasonable protection against harmful interference in a residential installation. This equipment generates, uses, and can radiate radio frequency energy and, if not installed and used in accordance with the instruction manual, may cause harmful interference to radio communications. However, there is no guarantee that interference will not occur in a particular installation. If this equipment does cause harmful interference to radio or television reception, which can be determined by turning the equipment off and on, the user is encouraged to try to correct the interference by one or more of the following measures:

- Relocate the receiving antenna.
- Increase the separation between the equipment and receiver.
- Connect the equipment into an outlet on a circuit different from that to which the receiver is connected.

- Consult the dealer or an experienced radio/TV technician for help.

This device complies with Part 15 of the FCC Rules. Operation is subject to the following two conditions: (1) This device may not cause harmful interference, and (2) This device must accept any interference received, including interference that may cause undesired operation.

This Class B digital apparatus complies with Canadian ICES-003.

Cet appareil numérique de la classe B est conforme à la norme NMB-003 du Canada.

This device complies with FCC RF radiation exposure limits set forth for an uncontrolled environment.

This device and its antenna(s) must not be co-located or conjunction with any other antenna or transmitter.

CE statement



This product complies with the radio interference requirements of the European Community.

Recycling

Packaging

Observe the local regulations for how to dispose of the packaging materials.

WEEE NOTICE

The Directive on Waste Electrical and Electronic Equipment (WEEE), which entered into force as European law on 13th February 2003, resulted in a major change in the treatment of electrical equipment at end - of - life.

The purpose of this Directive is, as a first priority, the prevention of WEEE, and in addition, to promote the reuse, recycling and other forms of recovery of such wastes so as to reduce disposal.

The WEEE logo on the product or on its box indicating collection for electrical and electronic equipment consists of the crossed -out wheeled bin, as shown below.



This product must not be disposed of or dumped with your other household waste. You are liable to dispose of all your electronic or electrical waste equipment by relocating over to the specified collection point for recycling of such hazardous waste. Isolated collection and proper recovery of your electronic and electrical waste equipment at the time of disposal will allow us to help conserving natural resources. Moreover, proper recycling of the electronic and electrical waste equipment will ensure safety of human health and environment. For more information about electronic and electrical waste equipment disposal, recovery, and collection points, please contact your local city center, household waste disposal service, shop from where you purchased the equipment, or manufacturer of the equipment.

ROHS COMPLIANCE

This product is in compliance with Directive 2011/65/EU of the European Parliament and of the Council of 8 June 2011 on the restriction of the use

of certain hazardous substances in electrical and electronic equipment.

FOR PRODUCTS THAT INCLUDE BATTERIES EU Batteries Directive 2006/66/EC

A new battery directive 2006/66/EC on Battery and Accumulator replacing directive entered into force on the 26th September 2008. The directive applies to all types of batteries and accumulators (AA, AAA, button cells, lead acid, rechargeable packs) including those incorporated into appliances except for military, medical and power tool applications.

The directive sets out rules for collection, treatment, recycling and disposal of batteries, and aims to prohibit certain hazardous substances and to improve environmental performance of batteries and all operators in the supply chain.

Instructions for Users on Removal, Recycling and Disposal of Used Batteries

To remove the batteries from your equipment or remote control, reverse the procedure described in the owner's manual for inserting batteries.

For products with a built-in battery that lasts for the lifetime of the product, removal may not be possible for the user. In this case, recycling or recovery centers handle the dismantling of the product and the removal of the battery. If, for any reason, it becomes necessary to replace such a battery, this procedure must be performed by authorized service centers. In the European Union and other locations, it is illegal to dispose of any battery with household trash. All batteries must be disposed of in an environmentally sound manner. Contact your local waste-management officials for information regarding the environmentally sound collection, recycling and disposal of used batteries.

WARNING: Danger of explosion if battery is incorrectly replaced. To reduce risk of fire or burns, don't disassemble, crush, puncture, short external contacts, expose to temperature above 60°C (140°F), or dispose of in fire or water. Replace only with specified batteries.

The symbol indicating 'separate collection' for all batteries and accumulators shall be the crossedout wheeled bin shown below:



In case of batteries, accumulators and button cells containing more than 0.0005 % mercury, more than 0.002 % cadmium or more than 0.004 % lead, shall be marked with the chemical symbol for the metal concerned: Hg, Cd or Pb respectively. Please Refer to the below symbol:



Copyright



The Bluetooth word mark and logos are owned by the Bluetooth SIG, Inc. and any use of such marks by Nyne Multimedia Inc. is under license.

Specifications

The technical specifications are subject to change without prior notice.

Output power	2 x 5W
Speaker drivers	2 x 1.5"
S/N	>50dB
THD+N	<10%
Dimension	?
Weight	?
Audio input	1 x 3.5 mm socket 1 x wireless input (Bluetooth)
Wireless	Bluetooth 4.0
Battery capacitor	3.7V 2200mAh
Play time	?

